



## "E Ala Na Moku Kai Liloloa"

Featured In This Issue:

**Fujioka's and the Plantation Store(s)**

Page 12

**Loving Our Bandstand Park**

Page 13

**Flooding in Waimea;  
Good Waves But What Else?**

Page 15



NORTH SHORE NEWS March 12, 2025 VOLUME 42, NUMBER 3



Women's Open Pro Final - 1st Ayaka Suzuki Crilley, 2nd Terisa Miranda, 3rd Valentina Diaz London, 4th Karla Costa  
Photo: BanzaiBettyPhotography Zenfolio

## Champions Crowned at the 2025 Aloha Freight Pipeline Bodyboarding Championships

The Aloha Freight Pipeline Bodyboarding Championships concluded with world-class bodyboarding at Banzai Pipeline, crowning champions in the Men's Open Pro (see page 16), Women's Open Pro, Junior Men's, and Junior Women's divisions. With 6-8 ft waves and improving conditions, the finals saw epic battles and history-making performances from some of the best riders in the world.

Ayaka Suzuki Crilley (Japan) was in dominant form all day, winning every heat on her way to the final. She opened with a huge 8.67,

landing a massive outside roll, and never looked back. Terisa Miranda (Canary Islands) pushed hard but couldn't close the gap, while Valentina Diaz London (Chile) rounded out the podium.

The Junior Men's final was an intense showdown between Michael Yannce (Peru) and Tayden Salinas (Hawai'i), with Yannce clinching the victory on his final wave. Hawai'i's Nash Brurkart and Koa Chambers also put on solid performances in the highly competitive heat.

Defending 2023 Junior Wom-

en's World Champion Aarya Tabalno (Hawai'i) put on a dominant performance, running away with the title and finishing with a 13.17 total heat score. Sarai Akiona (Japan) took second place, while Kaipoi Koa (Hawai'i) claimed third in a stacked final.

A championship to remember with world-class performances, powerful waves, and dramatic finishes, the 2025 Aloha Freight Pipeline Bodyboarding Championships delivered some of the most exciting action in the event's storied history.



## The 67th Kunia Orchid Show and Plant Sale

The event will be held at the Leilehua High School Gymnasium on March 21 & 22 from 9 am to 5pm on Friday and 9 am to 4 pm on Saturday. Admission is free with plenty of available parking. Local orchid clubs will showcase their best blooming specimens and vendors will offer a selection of orchid plants at reasonable prices. Educational sessions at 11:00am and 1:00pm on both days will cover general information on growing orchids. The Kunia Kountry Store will feature a wide variety of plants for home gardens as well as useful gardening supplies. There will also be homemade baked goods and much more. The sales at various food booths on site will benefit the athletic department of Leilehua High School.

The Kunia Orchid Society was established in the early 1950s by workers in Kunia Village and Poamoho Camp. Annual shows were held in the old Kunia Gym until Del Monte closed it in 2007. The show was able to continue in the Leilehua Gym in Wahiawa, a larger facility that allows more floral displays and vendor booths. Off and on since the early days in the Kunia Plantation Gym, Ikebana displays have been a popular attraction. This year it will again be a prominent feature of the show, thanks to Mrs. Connie Yoshioka and members of her group who enjoy sharing the ancient art form. Connie credits Mrs. Mitsue Kubo, a Wahiawa resident and retired Sogetsu ikebana instructor, for inspiring numerous students for many years. Mrs. Kubo passed away at the age of 96 in 2016.

Also known as Kadō, the Japanese art of flower arranging originated more than seven centuries ago from the Japanese custom of decorating evergreen trees with flowers to invite the gods. Ikebana expresses the philosophy of "less is more" by using just a few items in the arrangement while following a basic geometric shape; most often a triangle. Stems, leaves, and flowers are presented in a way that's both beautiful and harmonious. Vases or other containers can be a major part of artistic presentation.

This year, what began amid the pineapple fields of Kunia and ran for 53 years along the dusty road to the old Kunia Gym before moving to a new home at Leilehua High School in Wahiawa, the 67th Annual Kunia Orchid Show and Plant Sale invites you to enjoy the wonderland of ikebana and orchids in unforgettable floral displays! More information can be found at [kuniaorchidsociety.org](http://kuniaorchidsociety.org).

2025!

67th

**KUNIA ORCHID  
SHOW  
& PLANT SALE**

Leilehua High School Gymnasium  
1515 California Avenue in Wahiawa

Friday, March 21 9am – 5pm  
Saturday, March 22 9am – 4pm

**FREE ADMISSION!**

**Prize Winning Orchids  
& Floral Displays**

- \* Orchid Culture Demonstrations  
11am & 1pm on Friday & Saturday
- \* Kunia Country Store
- \* Garden Supplies

Presented by the

**Kunia Orchid Society**

& the Leilehua High School Athletic Department

Donations Welcome!

For more information call 808-228-2800

[kuniaorchidsociety.org](http://kuniaorchidsociety.org)

[www.facebook.com/KuniaOrchidSociety](https://www.facebook.com/KuniaOrchidSociety)

A photograph showing a large indoor display of various orchids. The plants are arranged in pots and hanging baskets, featuring a variety of colors including purple, white, and yellow. In the background, several people are visible, some looking at the plants and others walking through the display area.

A close-up photograph of a large, vibrant orange orchid plant. The plant has several large, bright orange flowers and green leaves. It is displayed in a pot that is partially covered with white moss. The background is a solid green color.

# EARTH DAY

## MAUKA TO MAKAI

SATURDAY APRIL 19

### SUSTAINABILITY VILLAGE

9 AM – 2 PM at the  
Upper Meadow, with hula  
hālau, keynote speakers,  
& local vendors

### VOLUNTEERS WANTED

All ages welcome! 8:30 AM  
check in, 9 – 11:30 AM  
malama aina projects;  
free same-day admission  
for all volunteers

### SIGN UP:



### Kama'aina Discount Day Wednesday March 26

Free kama'aina admission on Kūhiō Day, marking  
the birth of Prince Jonah Kūhiō Kalaniana'ole

### THE GATHERING OF HULA



AT  
WAIMEA  
11 AM & 1 PM AT THE AMPHITHEATER  
MORE DATES AT WAIMEAVALLEY.NET  
NEW HĀLAU EVERY MONTH

## E KOMO MAI KAMA'ĀINA

### Keiki Wednesdays

Free admission for all  
kama'aina keiki under age 12  
every Wednesday

### Plant Sale Saturdays

Wide variety of plants for home  
and garden at our nursery,  
every Saturday 8 AM – 12 PM

### Lā 'Ohana Sundays

Bring the whole family for 50%  
off all kama'aina admission on  
the 3<sup>rd</sup> Sunday each month



WAIMEA VALLEY  
HI'IPAKA LLC

OPEN DAILY, 9 AM - 4 PM

CALL: (808) 638-7766

@WAIMEAVALLEY



@WAIMEAVALLEYOAHU



WHERE HAWAI'I COMES ALIVE

WAIMEAVALLEY.NET





**Representative  
Amy  
Perruso**  
**Serving You in District 46**

Dear friends and neighbors,

On March 12, as part of the national Civic Learning Week, we will gather in the State House to celebrate the exceptional contributions of civic educators, including Jessica A. dos Santos, lifelong resident of Kahuku and dedicated advocate for her community. She is being honored as one of five outstanding state educators by the PACE Commission and the Hawai'i State House, a recognition that reflects her steadfast commitment to education and civic engagement in Hawai'i.

Jessica's 17-year career as an educator has been defined by her passion for fostering critical thinking and active citizenship among her students. As a Social Studies teacher at Hawai'i Technology Academy (HTA) since 2012, she has integrated blended learning strategies, educational technology, and inquiry-based approaches to ensure that students receive a high-quality, student-centered education. Her curriculum not only strengthens academic skills but also empowers students to become engaged members of their communities.

Before joining HTA, Jessica taught at Kalaheo High School, where she played a key role in curriculum enhancement and student development. Her commitment to public education extends far beyond the classroom—she has spent over 18 years involved in community, environmental, and social justice advocacy, demonstrating her deep dedication to improving the lives of those around her. With a Master of Arts in Secondary Education from the University of Phoenix Hawai'i and a Bachelor of Arts in Political Science with a minor in Women's Studies from the University of Hawai'i at Mānoa, Jessica has devoted her life to equipping young people with the knowledge and skills they need to navigate an ever-changing world.

Her leadership, passion, and unwavering dedication to civic education are a testament to the power of community-driven teaching. As a proud member of the Kahuku community, Jessica dos Santos has not only shaped the minds of her students but has also strengthened the fabric of the place she calls home. We are grateful for her service and look forward to seeing her continued impact on future generations.

Legislative Salaries and the Current Economic Reality

At a time when federal funding is uncertain and the state faces a significant budget shortfall due to the passage of HB 2404—an income tax cut that dispro-

portionately benefits the wealthy—it is important for legislators to carefully consider any salary increases. The State Salary Commission has recommended raising legislative salaries to \$121,000, but given the current financial challenges facing our state, a more balanced approach is needed.

The State Salary Commission, which independently reviews and recommends compensation for state officials, considers various economic factors in its process. However, as we work to address pressing budgetary concerns, we believe that legislative salaries should be structured in a way that reflects the economic realities of our constituents.

That is why I, along with several colleagues, have proposed an alternative approach. In our letter to Chair Hanabusa and the Commission, we recommend that legislators' base salaries be set at 100% of the Area Median Income (AMI) for Honolulu for a single earner—\$84,050 based on 2024 guidelines. Additionally, we suggest that annual adjustments be tied to the Consumer Price Index for Urban Consumers (CPI-U), ensuring that salaries remain fair and sustainable over time.

This approach aligns legislative compensation with the principle that one job should be enough to live, work, and raise a family in Hawai'i. It also reinforces the need for policies that support fair wages, strengthen local businesses, and promote a diversified economy that benefits all residents.

As we navigate difficult economic decisions, it is crucial that we lead by example. By adopting a salary structure that reflects the financial realities faced by working families, we can demonstrate our commitment to responsible governance while ensuring that public service remains accessible to all who wish to serve.

Mahalo for allowing me the privilege of serving as your representative.

**Lahui 'o Ka'olauloa**

## JOIN OUR NOVICE PADDLING PROGRAM

**Starting March 3rd**

- ✓ Learn paddling basics & fundamentals in an inclusive and welcoming team-oriented environment
- ✓ Improve your overall fitness level in a structured group workout program
- ✓ Train for races of various distances competing against teams throughout the state at your experience level
- ✓ Open to all regardless of age, experience, or fitness level

**More Information**

(808) 777-7652 | [www.lahuiokaolauloa.org](http://www.lahuiokaolauloa.org)  
[koolauloalpaddling@gmail.com](mailto:koolauloalpaddling@gmail.com)

## 2025 Hui Wa'a Regatta Season Kicks Off!

By Noah Grodzin

The 2025 Hui Wa'a regatta season will kick off at the end of March opening with pre-season events and then followed by a regatta regular season. There will be four events in total this season on the North Shore. Here in Haleiwa, we are lucky enough to be supported by two clubs; Haleiwa Outrigger and Manu O Ke Kai.

Haleiwa Outrigger will be celebrating their 30th anniversary this year. The club has continued to grow over the years now totaling about 80 members from Keiki to Kupuna and is looking forward to capitalizing off last season's success. They will be hosting two events this year; on May 10th they will be hosting a pre-season race, then on June 21st they will be hosting a regular season regatta. At the June 21st event the club will be partnering with the North Shore News to collect backpacks and school supplies for Operation: Backpack. Not only do you get a chance to experience an amazing regatta event you also have the opportunity to support a great cause like Operation: Backpack.

"As a canoe club which tries to be involved in our community, we would love to continue growing our members to allow a bigger imprint and to allow us to share what an amazing world the paddling community is from an athletic point of view, teamwork, and also in perpetuating the culture. It fosters such a great bond of Aloha and Ohana on the islands and worldwide" - Mai Tani Waye Haleiwa Outrigger Canoe Club

Manu O Ke Kai now in its 41st year will be led by newly minted head coach Robert Pactol. Coach Rob who has been paddling locally since he was 12 years old looks to lead Manu O Ke Kai to a potential three peat in the Hui Waa Triple A Class as Manu has won the division the last two years. Manu will also be hosting two events. First a pre-season event on May 17th and then Manu will host the regular season opening regatta event on May 31st. Manu O Ke Kai was recently named top non-profit organization by the North Shore Chamber of Commerce.

"This year I'm most excited about where our club is going with full filling our mission which is to perpetuate our Hawaiian culture through teaching Outrigger canoe paddling and way of life! To watch from Keiki to kupuna training, competing, and enjoying this sport puts a smile on my face. Especially looking forward to the State Championship race as it returns to Maui this year" - Robert Pactol Head Coach Manu O Ke Kai

Canoe paddling is a Hawaii legacy sport. The continued participation in the sport helps to perpetuate and connect with Polynesian culture. Canoe paddling also helps teach health, fitness, and leads to lifelong friendships and camaraderie.

Make sure to come out and support our local clubs and community!



**Our menu is available online at:  
9thislandvegan.com**

*"You don't have to be vegan to eat here,  
it's just that good."*

*We specialize in homemade food.  
Breakfast, lunch and more...*

**66-437 Kamehameha Hwy #104 Haleiwa HI  
(next to the Haleiwa Post Office)**

**808-367-1653**

**10am - 4pm Closed Thursday**

## Paalaa Kai Bakery

*Happy Saint  
Patrick's Day!*

*Luck is always  
on your side  
with our  
delicious treats!*

### Did you know?

**The odds of finding a  
four leaf clover is  
approximately one  
in ten thousand three  
leaf clovers!**

**The Shamrock is the  
National Flower of  
Ireland!**

### Luck with every bite!

**Sada's Malassadas  
Snow Puffies  
Butter Rolls  
Ensamadas  
Chocolate Croissants  
Sandwiches  
Cookies  
Fresh Bread  
Lilikoi Butter**





# HOW TO MAKE THE NEW YEAR *A spectacular ONE.*



## **\$49.95 GATEWAY DINNER & SHOW\***

*Gateway Buffet seating must be after 6pm. Evening show starts at 7:30pm*



**Back by popular demand, 'Ohana Club members can enjoy our buffet and HĀ show at a great price.** To join our free club, you just need to be a kama'āina — now's the perfect time. Visit [PCCOhana.com](http://PCCOhana.com) or to book, call 808-293-3333.



\*Must be an 'Ohana Club member with valid Hawai'i ID. Rates are per person. Some restrictions apply. Offer expires 3/31/25.



# WE MOVED!



## FarmLovers Market Hale'iwa

**Thursdays 2PM-6PM**

Waialua Community Association /  
Hale'iwa Gym



**66-434 Kamehameha Highway**



FARMLOVERSMARKETS.COM



North Shore's own **Thunderstorm Artis** is on his journey to be the next American Idol! Let's support and send our "Aloha" to Thunderstorm. American Idol premieres on ABC, Sunday, March 9, 2025 and streams on Hulu.

## SuperSaver Special \*Only at PKB\*

Made Fresh Daily

**Purchase 2 Blueberry  
Buttertop Muffins and get  
15% OFF or 4 for 20% OFF!**



## Delicious Sweet Treats!

This offer is valid from March 12 - 25, 2025.  
Offer cannot be combined with other promotions,  
offers, or daBest discount.



**Vice Chair**  
**Matt Weyer**  
**Serving You in District 2**

Aloha North Shore Community,

It was an honor to join Councilmember Scott Nishimoto at our February Council meeting in recognizing Howard Okamura for his extraordinary dedication to public service. Howard is officially the longest-serving staff member in the Department of Customer Services (CSD), having served more than six decades and under eight mayors, starting with Mayor Neal Blaisdell. His dedication to public service is a testament to his unwavering work ethic and passion for serving the people of O'ahu.

### Landfill Update

First, I want to say mahalo to everyone who has been advocating for the protection of our aquifers and agricultural lands. We are currently in the process of drafting proposed budget amendments to restrict City funds from being used for the current proposed landfill location. Aside from the City's budget process, I did want to encourage you to also continue tracking (1) House Bill 969, which would prohibit landfills above our drinking water aquifers, and (2) Senate Bill 438, which would prevent any landfills from being cited over aquifers or on prime agricultural lands.

### Community Updates

Mahalo to everyone who has reached out in support of the North Shore First Responder Center, which would help improve emergency service access and response times for residents and visitors alike. It is our understanding that the City Administration and the property owner are still in discussions on a potential sale price. As we approach the City's budget process, please sign up for our e-newsletter for updates on when to submit testimony in support of this and other projects we anticipate adding to the City's budget.

The Department of Customer Services has confirmed that the DMV kiosk we reported on last month will be installed at Mālama Market, with completion anticipated by the end of April. While manufacturing delays have impacted the timeline, we appreciate the community's patience as this service expansion moves forward. I will share any updates should the timeline change.

New Legislative Updates:

As a reminder, you may visit <https://www.honolulu.citycouncil.org/> to submit testimony on any bill or resolution that is pending before the City Council. With that in mind, I wanted to provide you an update on our two most recently introduced bills.

We co-introduced Bill 15 (2025) to create a cess-pool conversion grant program to provide financial relief for our families burdened by the costs associated with meeting the state's mandate to phase out cesspools by 2050. The program would be funded by the newly created Climate Resiliency Fund, and the measure has been referred to the Budget Committee.

We also introduced Bill 18 (2025) to allow the City to lead by example by removing single-use plastic bottles from City vending machines. As we work towards better managing our waste, the more we can reuse, divert, and compost, the more we can reduce what we have to put into our landfill. The measure has been referred to the Housing, Sustainability, Economy, & Health Committee. As always, if you have any questions or concerns, do not hesitate to reach out to me at (808)768-5002 or at [mweyer@honolulu.gov](mailto:mweyer@honolulu.gov).



*Caption: Council Vice Chair Matt Weyer and fellow Honolulu City Councilmembers joined Director Hashiro and Syd from the Department of Customer Services to honor Howard Okamura for over 60 years of dedicated service to the City and County.*

### Be Responsible for Your Green Waste

- Laie Dump open everyday until 6pm
- Kawaihoa Dump open only on Sunday 12- 6pm

### North Shore

#### Neighborhood Board Meetings #27

#### Next Meeting: March 25, 2025

4th Tuesday of Every Month - 7pm  
 at Waialua Elementary School Cafeteria  
 67-020 Waialua Beach Rd.

Regular meeting agenda found at:  
[www.honolulu.gov/nco](http://www.honolulu.gov/nco)

To view previous meetings go to:  
[olelo.org/olelonet](http://olelo.org/olelonet)





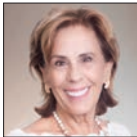
January 2025 Oahu Real Estate Report



Oahu single-family home median sales price: \$1,120,000  
North Shore single-family home median sales price: \$2,350,000



Oahu Condominium median sales price: \$539,500  
North Shore Condominium median sales price: \$450,000



**KARIN MOODY**  
OWNER, RB, REALTOR, RB 19578  
808.392.7410



**MEME MOODY**  
BIC, REALTOR, RB-22780  
808.741.3835



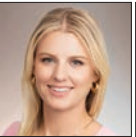
**NOEL MARCHAN**  
REALTOR, RS-73977  
808.282.0949



**MICHAEL PIEKLO**  
REALTOR, RS-79930  
808.551.6740



**TRISH KIM**  
REALTOR, RB-24034  
808.221.4200



**ALEKS HUSMANN**  
REALTOR, RS-79671  
808.979.5611



**NATHAN AMATORE**  
REALTOR, RS-83694  
808.780.2381



**MASON KAHIAPO**  
REALTOR, RS-86947  
808.721.8005

Local Knowledge. Personalized Service. The Right Home for You.

Better Homes and Gardens Real Estate Advantage Realty North Shore  
Haleiwa Store Lots, 66-111 Kamehameha Hwy. #902  
BETTERHAWAII.COM

©2025 Better Homes and Gardens Real Estate Advantage Realty North Shore. Better Homes and Gardens® is a registered trademark of Meredith Corporation licensed to Better Homes and Gardens Real Estate LLC. Equal Opportunity Company. Equal Housing Opportunity. An Independently Owned and Operated Franchise. Better Homes and Gardens Real Estate Advantage Realty North Shore are affiliates of Better Homes and Gardens Real Estate Advantage Realty.



## Ask the Doctor

Nash Witten, MD

### Dear Doctor, "I can't find a talk therapist. Do you have any recommendations?"

In primary care, we regularly screen patients for anxiety and depression with a screening tool like the PHQ-4. If the screening tool is positive, we will administer the PHQ-9 or GAD-7 to determine the severity of the patient's mood disorder. For patients who present with a known prior diagnosis of a mood disorder, like anxiety or depression, these tools are also helpful in determining how their current treatment regimen is working.

Numerous studies have shown that the best way to treat a mood disorder is with medications as well as talk therapy. By the time a patient presents in primary care with a mood disorder concern, we can easily prescribe medication; however, it is often difficult for patients to find a therapist if desired. Queen's Health Care Centers has access to Queen's Clinically Integrated Physician Network (QCIPN), an excellent resource to help patients find a therapist (among many other things!). The QCIPN case managers and social workers have updated lists of therapists who take your health insurance to save you the time to find a provider.

Another way to find a therapist is to call your health insurance company to request a list of providers in your area. The list of providers the insurance company sends you isn't always current, but it can be a good place to start looking. Also, for most health insurance companies, you don't need a referral from primary care to see behavioral health, too!

*Dr. Nash Witten is a Board-Certified Family Medicine physician at Queen's Health Care Centers Hale'iwa and Mililani. The clinics are accepting new patients. Call 808-691-8501 to schedule an appointment. Submit questions to the doctors at [nsnaskthedoctor@gmail.com](mailto:nsnaskthedoctor@gmail.com).*

## Gary D. Anderson

1942 - 2024

Born March 24, 1942 in Grand Rapids, Minnesota to Douglas and Edna (Harthan) Anderson, Gary was the oldest of five brothers.

Gary passed away on September 18, 2024 at the Yukio Okutsu Veterans State Home in Hilo, Hawaii where he departed with military honors.

Gary and Joan were married on December 6, 1980 in Honolulu. The two of them enjoyed the beach life with lots of dogs and cats, no kids, living at Chun's Reef for the next 33 years.

He got involved ("dragged in" as Joan would say) with the inaugural Hale'iwa Arts Festival (HAF) summer event that took place July 18-19, 1998 at the North Shore Market Place. Gary would become the Executive Director, seeing HAF through its first 15 years.

He is survived by his wife Joan Gossett; daughter Kari (John) Embree and her mother Darla Anderson; brothers Robert (Fran), Kent (Shahar), Bruce, and Brian (Jo); and many nieces, nephews, and friends.

Gary's celebration of life is on March 22 in Volcano. Go to [GaryDAnderson.com](http://GaryDAnderson.com) for full details and to submit memories, photos and RSVP.

*In lieu of flowers or sympathy gifts, we encourage you to donate to your favorite community arts/theater program or venue.*



## Spring Craft, Food, & Surf Sample Sale

*Catch the wave of Support and savings!*

**Dive into Surf Apparel Deals,  
Explore Local Crafts, Support  
Waialua High School Clubs, and  
Savor Delicious Food Bites!**

**Waialua High & Intermediate  
Lawn along Farrington Hwy**

**Saturday, March 15th  
9am-1:30pm**





## North Shore Chamber of Commerce News

### Join Us in Building a Stronger North Shore Community By Mike Biechler - President/Chair, NSCC

As we enter an exciting new chapter for the North Shore Chamber of Commerce, I want to personally invite members of our community to join us in making a difference. Whether through volunteering at our Information and Business Center, serving on our board, or participating in our many events, your involvement is what keeps our beloved North Shore vibrant and thriving.

The Chamber has been a cornerstone of our business and civic community for 40 years. This year, as we celebrate our anniversary, we reflect on the incredible efforts of those who have worked tirelessly to make the North Shore a great place to live, work, and visit. But our work is far from over, and we need passionate individuals like you to continue this legacy.

### Volunteer With Us

One of the easiest and most rewarding ways to get involved is by volunteering at our Information and Business Center. This is a great opportunity for residents to connect with visitors, provide guidance, and share the unique charm of the North Shore. Our volunteers help ensure that our community remains welcoming and that businesses benefit from increased visibility and engagement. If you have time to spare and love meeting new people, we encourage you to reach out to us and get involved.

### Board Elections – Seeking New Leaders

Leadership is key to the success of any community organization, and we are looking for dedicated individuals to join our Board of Directors. Our annual elections will take place on **Tuesday, April 15, 2025, at 8:00 AM at Haleiwa Joe's**. We are seeking individuals who are passionate about making the North Shore a better place for both businesses and residents. If you have skills and expertise that could help strengthen our Chamber's efforts, we encourage you to step forward and run for a board position. Nomination forms are available, and we welcome all those interested in contributing their talents to contact us.

### Upcoming Events – A Year of Celebration and Remembrance

In addition to our 40th anniversary, we have a number of important events on the horizon. These gatherings not only bring our community together but also honor the traditions and values that make the North Shore special.

**Memorial Day Observation** – Join us on **Saturday, May 24, 2025, at 9:00 AM at the Haleiwa War Memorial** as we pay tribute to the brave men and women who have served our country.

**4th of July Celebration** – Our annual Independence Day festivities promise to be filled with patriotism, fun, and family-friendly activities.

**Christmas Events** – As the year comes to a close, we will once again spread holiday cheer through our traditional Christmas celebrations.

### Advocating for Our Community

Beyond events and volunteerism, the Chamber is actively working on key issues that impact our community's future. We are currently collaborating with elected officials to **oppose the proposed dump on the Dole lands between Haleiwa and Wahiawa**—a project that could have significant environmental and economic consequences. Additionally, we are working closely with the City to minimize disruptions from the **Haleiwa Walkways Project**, ensuring that improvements to our town's infrastructure benefit both businesses and residents.

We are also committed to preserving the natural beauty and character of the North Shore. We continue to advocate for responsible development that respects our environment and maintains the charm that makes our community special. By working with local businesses, residents, and policymakers, we strive to create sustainable solutions that make the North Shore a better place to live and work in.

### Join Us in Shaping the Future

The North Shore Chamber of Commerce is more than just an organization—it is a community of dedicated individuals who care deeply about preserving and enhancing our way of life. Whether you choose to volunteer, run for the board, or simply participate in our events, your contribution matters.

To learn more about volunteering, obtaining a nomination form, or upcoming events, please contact us at 808-637-4558 or [info@gonorthshore.org](mailto:info@gonorthshore.org). Together, we can continue building a stronger and more prosperous North Shore for generations to come.

We look forward to seeing you soon!



### EXECUTIVE DIRECTOR WANTED FOR THE NORTH SHORE CHAMBER OF COMMERCE

The North Shore Chamber of Commerce is on the hunt for an Executive Director who can ignite our mission to support local businesses and further enhance our vibrant historical community.

We are looking for:

An impactful leader to engage with stakeholders, the community, government leaders. A day to day manager of Chamber operations, personnel and volunteers. A creative and talented event and fundraising coordinator. An excellent communicator and the ability to work closely with a team.

If you have the executive skills and personality we are looking for, we would love to review your resume. A fully detailed job description can be found on the North Shore Chamber of Commerce website.

The North Shore Chamber of Commerce represents the best of the culture, agriculture, history and tourism on Oahu. Come join our team



## Fujioka's and the Plantation Store(s)

*By Boyd Ready, Local Historian*

For decades at the Waialua Sugar's company store on the central square of Waialua town, thousands of sugar workers could get food, clothing, and supplies, usually on a charge account keyed to the 'bango' number on each worker's embossed metal tag. Occasionally a worker who got behind, in a hardship case, would have the bill written off.

In the 1950s, as part of the transition to trucking, mechanical harvesting, and unionization, Waialua Sugar Co. sold much of the housing, at depreciated value, to resident workers, and sold the company stores in Kawailoa, Puuiki, and Waialua town itself, to Mr. Ryotaru Fujioka, longtime proprietor of his own family-run store in Mill Camp. Ryotaru formed the R. Fujioka & Sons, Ltd. company to run all four stores. The plantation management was happy to be getting out of dairy, retail, and housing, as unrelated businesses to concentrate on sugar. The name 'Plantation Store,' remained (it was not 'Fujioka Store') and continued with charge accounts. Both Treasurer Tsutomu and Manager Francis said they never cut anyone off, remembering one who took 15 years to pay. The remote Kawailoa and smaller nearby Puuiki stores were closed in the 1960s.

Arriving with his wife, Take and family, and not under contract to the plantation, Ryotaru started making sandwiches for the workers. He then opened his own store in 1905. The building still stands, in Mill Camp, across the street from Hawai'i's first Hongwanji school and priest's residence. Ryotaru, and wife Take, raised nine children in the store's living quarters and were close friends with Rev. Kashiwa's family. The store helped support all the Buddhist priests.

After Prohibition ended, son John, who graduated from the first class of Waialua High School, became a dentist in Waialua. This was despite FDR's WWII internment interrupting his education. Older brother Francis Hiroshi, the store's longtime manager, went to Leilehua, served as a trustee for the Waialua Civic Club, and a Director of Service Motors. He worked in the store his entire life. Treasurer Tsutumi served in the 442nd Regimental Combat Team's artillery branch in WWII. And in 1947, 1948 and 1949 the 'Fujioka Store' softball team had an all-star catcher, was among the strongest in the AJA league, and won three 'Waialua Commercial League' championships in a row.

The family business had a setback in 1972 when a fire destroyed the store, leaving only the vault which still stands next to the historic Bank of Hawaii building. They continued in the small original wooden building at Mill Camp. They were known for good meat cutting, running store credit accounts, and for cashing workers' paychecks. This ensured a steady stream of local customers. The classic old storefront with Mt. Fuji 'Liquors' sign was often used as a scene for Hawaii 5-0, Magnum PI, The Black Orchid, Japanese commercials, and a cameo in George of the Jungle.

They had intended to rebuild the main store but instead took the opportunity to buy the 'Kits' Supermarket in Haleiwa, reopened as 'Fujioka Store' right across from the Sakai family's 'Haleiwa IGA.' In 1984 when Francis Hiroshi died his sons Greg, Lyle, and Norman continued to run the store. Supermarkets back then didn't accept credit card payments, just checks and cash. Fujioka's opted in to Bank of Hawaii's credit card network before any of Oahu's big chain supermarkets. Their reputation for cashing checks, was a boon to local laborers, and it also meant they were a target. One unfortunate night, thieves broke in and carried off the safe. The supermarket obviously survived that and continued until 2005 when Foodland reopened it as a one of their non-union Malama Markets. The old wooden store building at Mill Camp continues in use as an office for Twin Bridge Farms.



*Fujioka's at Mill Camp, Boyd Ready photo*



*1930 Plantation Store in Waialua, Fe Meyers photo*



## Loving Our Bandstand Park

By Kendra Martin

Our lovely bandstand is sitting in the park across from the library in the heart of Waialua. The park is a one-acre plot with several beautiful mature Ficus trees. Once a month, on the first Sunday, a free concert is hosted there by Friends of Waialua Bandstand in the Park and many folks bring chairs and blankets to come together for music and community camaraderie. The park belongs to the City and County of Honolulu and there isn't sufficient funding to maintain the grounds well enough to highlight its natural beauty.

"It's underutilized." I've heard many people say this, and I've said it myself.

After the winds and rains of the stormy weather ending the month of January, there was debris all over the park—big limbs, small limbs, branches and leaves and an abundance of trash. It was green though, thanks to Waialua-raised resident Willy Tsukada, who has taken up watering and mowing the park, but the grounds needed major work before we could host the community's own Na Hoku Hanohano Award winning musician, Ginai, on February 2. Rose Tsukada who was helping her husband called on Friday and said, "We need help."

With a rake, construction grade trash bags, gloves and lopping shears, I went over to the park to help Rose and Willy. Soon my husband Ken came over with a small chain saw and two 50-gallon trash containers and another rake. We worked for hours with Willy and Rose before Ken and Willy each took a truck load of green waste to Earthworks. The next day Willy, Rose and I continued working in the cool of the morning, with Liz Riviere coming to join us. One of my sons came too and helped for a while and my dog Reef came with him. We raked, we bagged leaves and small sticks. We had at least twenty 50-gallon bags to haul off. The City Park and Rec attendant, Bryson, came by to empty the trash containers and thanked us for our work. Later he came back to help haul off some of our bagged green waste. Willy sawed up the remaining larger limbs and loaded up his truck and trailer to make a couple more dump runs before finishing off the day by mowing the whole park.

While we were working, a group of five or six people walked up and said, "I hope we won't disturb you, but we like to use the bandstand on Saturday mornings for group prayer." "Of course you won't disturb us, I hope we won't disturb you," I replied. The leader of the group said if they had known they would have come prepared to help us with the clean-up. Then she volunteered to help in the future on the Saturdays before concerts, and she thought some of her prayer group might like to help too. It was nice meeting a group that uses the bandstand regularly. While I was there, I saw several people walking through the park on its winding concrete path, one was pushing a baby in a stroller, others were walking their dogs or just walking through with a friend.

Later that day as I was driving home, I remembered my thought, "the park is underutilized," and just then I realized that what I had been doing the last two days was just that—using it—the park! Yes! Raking up its fallen leaves, picking up its trash and broken branches, walking back and forth over the natural rise and fall of its uneven terrain, looking for twigs, observing its weeds and its insects, all this was using the park. Gazing at the white clouds rolling across its blue sky, marveling over its stately trees, looking with appreciation at the details in the design and construction of the bandstand, and even noticing for the first time the old-fashioned-looking streetlamps along its curved sidewalk, all this was using the Bandstand Park—using it while working together with family and friends. But there was something more that came to me as I drove home, something new I was feeling—a closeness to the park. I had not felt this way about the park before, but I had never spent that many hours bending over, scooping up its broken branches, stuffing its fallen leaves into trash bags, observing its birds or talking to its visitors. Suddenly I realized that this feeling was love, love for the park—using it, caring for it, loving it! And maybe, I thought, just maybe, I'm feeling the park loving me back.

I imagine this feeling of loving and being loved by the park is not foreign to Rose and Willy or Phil Meek, another Waialua born and raised resident, who adopted Bandstand Park a few years ago and has also spent many hours watering and mowing its grass. There's much to love and be grateful for in this historic town of Waialua. Let's start meeting up at the Bandstand Park to care for it on the Saturday morning before the first Sunday of each month, when a concert is held. Bring rakes, weed whackers, gloves, water and any other tools you think might be useful. Let's care for each other too, share a picnic lunch and explore ideas of other ways to love Waialua. Look for Friends of Waialua Bandstand on Facebook or visit our website, [waialuabandstand.com](http://waialuabandstand.com) for opportunities to love Waialua Bandstand and the community. For more information contact Kendra Martyn, Chair of Friends of Waialua Bandstand in the Park at [Kendramartyn@yahoo.com](mailto:Kendramartyn@yahoo.com)



Waialua Bandstand  
Presents

**Phil Meek and The Time  
Travelers**

**Sunday, April 6, 4pm**

*Bring your lawn chairs and enjoy the show!*



## NORTH SHORE REAL ESTATE TRENDS

by Richard Sterman (R)  
of Sterman Realty & Director of  
Shoreline Preservation Coalition

### The Latest on North Shore Real Estate

Last December was one of the slowest months for sales of homes on the North Shore (just two sold!). However, just a month later, nine North Shore homes sold with a (year to date) 14% increase in price (from \$2,065,000 to \$2,350,000).

I'm not sure if it's because of the election, consumer confidence or the perception that interest rates are going to remain around 6% to 7% (the current rate), however, we had a very active start to the year!

More Buyers are coming in and paying cash (a record high) and many first time home buyers are coming in after selling their Crypto-Currencies or high-flying stocks. An equal number of buyers are obtaining loans from family or friends.

Rates should come down to the 6% level, fueling even more demand and it is predicted that "the worst of the 'affordability' challenges are over" with both more homes coming on the market and lower interest rates.

With all this, 2025 is shaping up to be a 'banner year'!

*Richard Sterman has been serving North Shore's real estate needs for over 40 years. He is the owner and Principal Broker of Sterman Realty, the largest Full-Service real estate company on the North Shore. You can contact Richard by emailing [Richard@Sterman.com](mailto:Richard@Sterman.com), going to [www.Sterman.com](http://www.Sterman.com) or just calling 808.638.8600.*

## North Shore Spotlight: Waialua High and Intermediate School Offers Agricultural Foundations Program

By Noah Grodzin

There is something special growing at WHIS. In the shadow of Mt Ka'ala tucked towards the back of the school grows a 100% organic farm. Led by Instructor Jacob Mirels the once vacant one-acre open space has been transformed into a lush and verdant masterpiece of an ever-evolving lesson plan. The program began humbly with odds and ends. Jacob slowly started mapping it out and amending the soils. Old adjacent fruit trees that seemed dormant started to thrive and come back to life as they fed off the revived land.

Now in its second year the garden consists of twenty-four garden beds each about fifty feet long with still space for expansion and new plantings. The garden features a wide variety of plants including herbs and vegetables. Herbs include cilantro, basil, and green onion. Vegetables such as radishes, parsnips, carrots, green beans, beets, lettuces, peppers, and kale, taro all grow abundantly. There is a very special ti leaf bed that features unique varieties, some donated from nearby Waimea Valley.

There is a row of banana trees that are their own lesson in composting as they are grown around special pits that are a collection area for local green waste. Other fruit trees including mango, papaya, avocado, tangerine, and the rare cajamanga surround the garden's edges. In one corner there is a small sugar cane patch.

Money for the program was provided by the DOE. Additional state funding procured by Superintendent Bob Davis helped Jacob acquire a John Deere tractor. Nearby farming company Corteva donated irrigation supplies, a shade house, and guidance on farm management.

A recycled industrial sink donated from the Leilehua HS program serves as a recycled washing station. The washing station completes the whole cycle, as the kids are able to plant, grow, harvest, wash and then even store product in a handful of onsite fridges. This is a fully functioning operation.

Jacob knew he was onto something when he started sharing the early produce with the local offices and getting great feedback. Today produce is sold to local restaurants such as Rajanee and Stonefish. Students also get to take plenty back to their homes.

The program is growing as fast as the garden and is currently attended by 50 students from grades eight to senior. Jacob wants kids to learn life lessons that they can take back to their homes or even future occupations and professional jobs. The program goals are to provide both career and technical education. With the idea to "give the kids a tangible blueprint, they can walk away from this and do it for themselves, families, or even future occupation". Jacob has high hopes for the future including maybe a farmers market stand, or becoming an official farming club.

If you have any questions or would like to contribute or maybe try some tasty produce, contact Jacob at [Jacob.mirels@gmail.com](mailto:Jacob.mirels@gmail.com)



WHIS Agricultural Foundations Program



## Flooding in Waimea; Good Waves but What Else?

*By Isaiah Wagenman,  
Conservation Specialist at Waimea Valley*

The hazards of flooding can be felt throughout Hawai'i, Waimea Valley is no exception. From October to April, the heavy showers can be felt the strongest. If you have seen the photos or videos circulating during these times, you will notice our famous waterfall gushing with reddish-brown water. The influx of water will cause the estuary to rise over three (3) feet, spilling onto the entranceway, and nearly engulfing our Palm Garden. Perhaps most visibly would be where the estuary meets the sand berm. Often this area can be seen blown open by human interference (digging) or from the raw force of tons of water pushing against the bay. Either way, the result is a torrent of freshwater being pumped into the bay, with a small side effect of a standing wave effect at the river mouth.

First, before exploring flooding more, let's cover some history and background information. Waimea translates to "Red Water." The red color comes from the soil mixed in the stream water. Highly weathered soil contains more iron oxides, which gives it that red color. Waimea then gets its name from having red soil runoff into the water, possibly hinting at a record of soil runoff in the past.

We think of the valley as a watershed, which collects all the rainfall and streams into one outlet. The water we see coming through Waimea can be, in part, attributed to the rainfall gathered over thirteen square miles of the Ko'olau Mountain Range. Across the mountain range, and its nearest watershed, many components affect the waters of Waimea Valley and further downstream when the river empties to Waimea Bay.

Flooding events from heavy rainfall within the watershed will alter the environment within and around the resulting water flow. Large quantities of soil are lost from the impact of rainfall, carried by the rush of the water, or broken apart from tumbling debris. Debris can be a combination of soil, rocks, vegetation, or any raw material caught in heavier events transported to a new location. Locations of transport may become hot spot areas for newly established invasive species, a change in soil composition (harder sandy soil to more fine clay-like soil), and pile up materials such as wood or rock and soil. The resulting alterations can reduce soil stability and change regular water flow, possibly exacerbating future flooding events. How then, do we mitigate these effects?

Mitigation comes in many forms, all of which start with an understanding of how your location is being affected. At Waimea we focus on removing any significant blockages from the stream channels, reducing rock and soil erosion from the embankments, actively composting, trimming vegetation, removing invasive species, and paying attention to

weather trends. Our team monitors the waterways above and below the waterfall, walking alongside the stream and removing any damming tree falls that may affect water flow. Alongside these efforts, we chip and compost plant material post-removal to reduce the amount of debris that could cause problems downstream. The focus is primarily on invasive species that are abundant and whose growing patterns are problematic, such as Albizia. After removal, plant barriers including native species are established along stream embankments to encourage abundance. The added benefit is that these barriers reduce soil erosion. The roots of the vegetation can hold the soil in place easier and reduce the number of overland debris.

Additionally, the United States Geological Survey (USGS) stream stations are in place within two (2) locations of the Kamananui Stream. Rainfall and wind data from the weather stations are used with the stream gage information to understand how our near stream flooding will act. The data is then used as an early warning sign. Warnings are also seen at the berm and in the estuary; if water is rising high, the staff is placed on call in case the berm needs to be broken open manually. In the future, we hope to establish an active monitoring program within the streams for gathering data related to water health. Parameters such as turbidity and salinity will be explored. Monitoring will help us understand what is happening within our stream and how different actions and weather conditions affect the health of the ecosystems.

Questions that can be kept in mind are the "how" components of flooding. For example, how does this influx of water change the estuary, and is it in a healthy way? How, if at all, does this affect the bay? How does opening the sand berm affect marine life? And how can we mitigate any risk from flooding to the Valley and the surrounding community?

Flooding is a threat that is always with us and will continue to be with us into the future. Our main defense is taking the time to understand how it can affect us and finding ways to reduce the impact. We all as citizens can contribute to these efforts through small and large actions. The simple act of reducing litter can carry over more than you may think. It is up to us to help in what ways that we can.

Our volunteer program invites community members to the Valley to learn about these challenges firsthand and to participate in making a positive difference in the natural environment. You can find more information at [waimeavalley.net/volunteers](http://waimeavalley.net/volunteers). See you in the Valley!

**North Shore News**

Next Issue - April 9

Deadline Date - March 26



## @Banzaibetty Press

### LOCAL WAHINE WINS BUFFALO TANDEM EVENT!

The 48th Annual Buffalo Big Board Surfing Classic went off without a hitch for five days, two weekends. It is supported by the not for profit organization Ho'oma'a. The mission is to perpetuate and promote Hawaiian culture and values. It means basically to practice and gain experience and skill, absolutely perfect! Surf ranged from 2 feet to 8 feet and beautiful conditions prevailed for this historic event. It's not about winning, it is all about the community gathering and aloha of those that participate. Matter of fact most of the "winners" gave away their prize of surfboards to others that needed it more. The event honors World famous Richard "Buffalo" Kalolo'okalani Keaulana who is Waianae's premier waterman. Buffalo was born in 1934 and over his long career he learned many, many disciplines of the ocean including fishing, canoe sailing and lifeguarding. He was a lifeguard in Hale'iwa in 1954 and the Makaha Park keeper as well as being on the U.S. Army surf team. Of course he won many international surfing events and was inducted into Surfing's Hall of Fame! When asked how to stay young like himself he said "jump around and walk with the menehune". The event in the spirit of the west side has canoe surfing, sup squash, paipo, team sup, 250 lb longboarding, bullyboard tandem, longboarding and tandem. Longboarding is not the usual off the lip stuff. You perform maneuvers like the coffin, cockroach, scooter boy, buddha, tiki and more. Not so easy to do on 8 foot waves for three seconds. It's good fun for sure and awesome to watch. Tandem surfing is a fan favorite. Local Hale'iwa surfer Jensi Gibbons with her partner Jordon Patterson won the division. Jensi has been practicing for a couple years now having come from a gymnastic background she was keen to try the discipline. Easy with Patterson who is a well respected waterman and has practiced the art for years. Winning the division at the Buffalo Big Board Surfing Classic was a hard fought prestigious battle. A big congratulations to the team! See you next year at the Buffalo Big Board Surfing Classic!

### BARRON MAMIYA SHOUTOUT

The North Shore has a new star, Barron Mamiya. The regular foot 5'11" super surfer won the first event of the World Surf League season at Pipeline, the Lexus Pipe Pro. Give him a giant shout out! He won it two years in a row. That was an incredible feat, historic.

Mamiya sits at 2nd on the world tour as I write. The second event did not go as well at the controversial wave pool in Abu Dhabi where he placed 17th. At Pipe it was so close! There was a tie with Leonardo Fioravanti from Italy in the final, at 17.97. They went with the highest score to see who would take the win and it was Mamiya with a 9.80 on one wave. It was something to watch, the beach was electric with a massive amount of viewers! The WSL tour now heads to Portugal for the MEO Rip Curl Pro. It will be an epic season as we watch our new hero compete! Good Luck!

### DAVE HUBBARD WINS EPIC MEN'S FINAL AT THE ALOHA FREIGHT HAWAII PIPELINE BODYBOARDING CHAMPIONSHIPS

The Aloha Freight Presents Hawai'i Pipeline Bodyboarding Championships delivered one of the most thrilling Men's Open Division finals in the history of bodyboarding at Pipeline. After an intense day of competition in world-class waves, Kaua'i's Dave Hubbard emerged victorious, securing first place in spectacular fashion.

The final heat saw Hubbard strategically sticking to the lefts at Pipeline, waiting patiently for the perfect wave. With less than two minutes remaining, he unleashed the highest-scoring wave of the entire competition, earning an incredible 9.43 and cementing his victory.

Sammy Morretino, also from Kaua'i, put on a strong performance throughout the final, securing second place with a high score of 7.77. Mack Crilley from Maui rounded out the podium in third place, making it nearly an all-Hawai'i final. Alfonso David Aguilar Contrera, competing at Pipeline for the very first time, made an impressive debut, finishing in fourth place and proudly representing Mexico on the world stage.

With powerful surf 6 to 10 foot conditions, this year's Men's final will go down as one of the best in the history of bodyboarding at Pipeline.

Final Results – Men's Open Division:

1st – Dave Hubbard (Kaua'i)

2nd – Sammy Morretino (Kaua'i)

3rd – Mack Crilley (Maui)

4th – Alfonso David Aguilar Contrera (Mexico)





**KO'OLAULOHA HEALTH CENTER**

## Trusted Pediatrician Rejoins KHC!

KHC is thrilled to welcome veteran pediatrician Doug Sutherland back to our team. Dr. Sutherland has been caring for Ko'olauloa's keiki for over 30 years.

Dr. Sutherland accepts ALL children -- both new and returning patients. Call 293-9231 to make an appointment today.

 (808) 293-9231 [koolauloachc.org](http://koolauloachc.org)



Barron Mamiya in Tahiti Photo:WSL



Dave Hubbard, Pipeline Bodyboarding Champion  
Photo: Kainoa Ronquilo



Men's Pipeline Bodyboarding Champions  
Photo: BanzaiibettyPhotography Zenfolio



Jensie Gibbons and Jordon Patterson win the Buffalo Tandem event Photo: BanzaiibettyPhotography Zenfolio





# WAIALUA

## FEDERAL CREDIT UNION

Serving the North Shore Community

[www.waialuafcu.com](http://www.waialuafcu.com)

(808) 637-5980

- SAVINGS
- CHECKING
- LOANS

**friends  
of the  
Waialua  
Library**



67-068 Kealohanui St, Waialua, HI 96791  
[FriendsofWaialuaLibrary@gmail.com](mailto:FriendsofWaialuaLibrary@gmail.com)  
 808-637-8286

### Readers' Group

Thursday, March 27, 9:30-11am

Title: "Table for Two" by Amor Towles

### Writers' Group

Thursday, April 10, 9:30-11am

Topic: "Airplane Experience"

### Family Story Time & Activity

Every Saturday, 10:00am

### Computer Introduction

by appointment - 808-637-8286

### Used Book Sale

Saturday, April 19 8:30-12:30

Library closed Weds. 3/26, Kuhio Day

### Endangered

MISSING SINCE January 18, 2025



**Samantha Chun**

Nickname: Sammy

AGE MISSING	17 yrs
HEIGHT	5 ft. 3 in.
WEIGHT	125 lbs.
HAIR	Brown
EYES	Brown
RACE	Hawaiian, Chinese, Caucasian
HPD NBR	25-023337

### MISSING FROM: Haleiwa, HI

Samantha is a female with an average build and fair complexion. She has pierced ears. She was last seen with an 18 year-old male companion in the Mililani area and may be seen in the Haleiwa and North Shore area on the island of Oahu.

If Seen, Please Call Honolulu Police Department 911 or 808-529-3111

Missing Child Center-Hawaii 808-586-1449

The Mililani parents of Samantha (Sammy) Chun are asking the North Shore community to help bring their missing daughter home. Sammy and her boyfriend, Joey Fujioka went missing on January 17th. Joey's remains were found in the waters off Ke Iki Beach on the North Shore. The teens' belongings were found on the shore along with Fujioka's parked car but there has been no sign of 17-year-old Sammy. If you have any information email: [findsammychun@gmail.com](mailto:findsammychun@gmail.com) or call 911.

*The Chuns appreciate everyone who has reached out and continues to help search for Sammy. "We will continue to look for her as long as there is any chance that she might be found."*



# BULLETIN BOARD

## Munden Design & Build

Lic.#BC19632

Design • Plans • Permits • Construction  
Additions & New Residences  
**808 391-8616**

*Providing quality work since 1978*

## World Class Notary

Based in Waialua, HI

- |                |                      |
|----------------|----------------------|
| NOTARY         | BACKGROUND CHECKS    |
| FINGERPRINTING | IN HOUSE PARALEGAL   |
| APOSTILLE      | TRANSLATION SERVICES |

**(808)489-6900**

## N-C PLUMBING & SUPPLY

Cont. Lic. No. C-8913



- RESIDENTIAL & COMMERCIAL SALES & SERVICE
- CONTRACTING & DESIGN
- HOME PLUMBING SERVICE
- PLUMBING FIXTURES, HEATERS • FREE ESTIMATES

Nestor P. Calilao (Owner)

P.O. Box 769

Waialua, HI 96791

Business: (808) 637-8662

Cellular: (808) 372-8718



## mestiza reiki

HEALING TOUCH | HUMANS & HORSES

- Improve behavior
- Relieve pain
- Ease grief

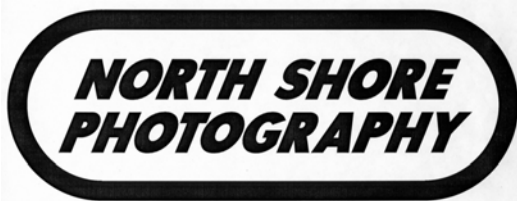


Lori Pino

MestizaReiki@gmail.com

808.459.5184

Mobile energy healing services & classes



**HALEIWA, HAWAII**

Over 50+ Years of Professional Services and Historic  
Images to the Community. AKA "Nostalgic Photos Hawaii"  
To See 1000+ Images Search: northshorephotohawaii.com



## PCC

PACIFIC CROSSINGS CONSTRUCTION

**Renovations & New Residences**

Based in Waialua with 20 years experience

**808 864 2804**

Lic.#BC39267

## ICC MOBILE DETAILING

Alex Racoma

**808.638.1900**



Interior Deep Cleaning  
Spot and Stain Treatment  
Complete Detailing

**I Clean Cars**

## LIBERTY TAX HALEIWA

Accurate - Guaranteed - Friendly  
We Do Business Taxes

For information and appointment

**(808) 518-2219**

Located next to Killer Tacos



**Would you like to  
receive the  
North Shore News  
via email  
FREE and in  
COLOR?**

Just send us a  
message at:  
NSNHaleiwa@gmail.com

## rajanee

thai cuisine

at Hale'iwa Store Lots - Dine In or Take Out

Mon, Tues, Thurs 11:30am - 8pm

Fri, Sat, Sun 11:30am - 9pm

Wednesday 4pm - 8pm 808-784-0023

# Kahuku Public & School Library

## HAWAII STATE PUBLIC LIBRARY SYSTEM

# APRIL 2025



### Drawn to the Library

National Library Week  
April 6-12, 2025

**Celebrate Library Week**  
Libraries draw our community together. Visit us for activities all week.

TUE  
**04/08**  
5PM



### Movie Night: **Dog Man (PG)**

Runtime: 1 hr 33 min

When a dog and a police officer are injured together on the job, a life-saving surgery changes the course of history.

TUE  
**04/22**  
5PM



### Movie Night: **The Garfield Movie (PG)**

Runtime: 1 hr 40 min

Garfield the Monday-hating, lasagna-loving indoor cat, is about to have a wild outdoor adventure!



### Basic Digital Skills Mondays 10am-12pm

- 04/07**- Computer Basics
- 04/14**- Connecting & Navigating Internet
- 04/21**- Using Email
- 04/28**- Staying Safe Online and Avoiding Scams

Register at 808-293-8935

### AARP Foundation Tax-Aide

**FREE TAX PREPARATION FOR SENIORS, THOSE WITH DISABILITIES AND THOSE WITH LOW INCOME.**

Thursdays  
9:30AM-1PM  
February 6th -  
April 10th

- Use sign up sheet outside the library
- No appointments. Sign up and wait turn



Scan for details

### Recurring Programs

**Tuesday 5:30pm**

Tai Chi

**Wednesdays 10am**

Story or Play Time

**Wednesday 4/9 +4/23**

1-3pm Lego Club

**Closed on**

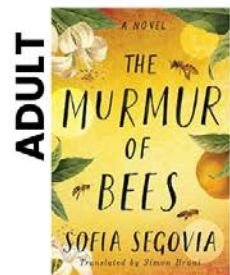
**Friday, 04/18- Good Friday**

### Kūpuna Hour

**‘Ōlelo Hawai‘i**  
w/ Aunty Gigi and La‘a  
1st + 3rd Thurs  
April 3rd and 17th  
at 10am

**Games**  
w/ Tammy Meyers  
2nd + 4th Thurs  
April 10th and 24th  
at 10am

### Book Club



**Friday, 4/25**  
1:30pm

For more information, visit us online at  
[www.librarieshawaii.org/kahuku](http://www.librarieshawaii.org/kahuku)



@friendsofthelibrarykahuku



## The History of Haleiwa

### Farmers Market

### Celebrating our 16th Year

Hale'iwa Farmers Market opened April 9, 2009 on the bypass road and the entrance to Hale'iwa Town. We were open on Sundays. The market featured 8 organic NS farmers and 4 local farms plus food vendors and NS artisans. 65 vendors in all. Lopaka Brown and Paul Izak played music under a 70 seat cafe. 2,000 Customers came weekly some travelling all the way from Hawaii Kai. There was a free arts and crafts booth that Rex Dubiel ran with Surf Dog. We had many festivals. Our Cacao Festival was the first one on all the islands. We had successful Coffee and Kalo festivals too.

In 2012 we moved to Waimea Valley. Richard Pez-zulo saw the value of hosting the market as he is very community oriented. We thrived in the valley until Covid came. The valley closed for months and the market never really was the same when it reopened. We spent 12 good years in the valley. When the luau took over our Thursday afternoon venue we started looking for a new place. The Waialua Community Association recognized the benefit of hosting us on the lawn. They also saw the importance of supporting our North Shore farmers. Most vendors are residents of the North Shore community.

Our new location is at 66-434 Kamehameha Hwy at the WCA/Hale'iwa Gym. It opens Thursday March 6 from 2-6. We will open with 6 NS farmers, great food like mochi waffles, rotisserie organic chickens and porchetta sandwiches, poke bowls, vegan sandwiches and salads and NS artisans. We will have live Hawaiian music and a cafe to sit down in. There will be free arts and crafts for the kids 3-6pm and a lawn to take your shoes off and ground in Mother Earth. Our market will be held to feed the local community fresh locally grown produce and healthy food choices. Farmlovers Markets encourages healthy eating as one of the joys of life. Come support locally owned North Shore small business owners. We will open with 30 vendors that will bring high quality products and a weekly celebration of community on the North Shore.

Join in the fun and support your local farmers. See you there!  
Pamela Boyar



**North  
Shore  
News**



**2025  
Schedule**

PUBLICATION DATE	EDITION	DEADLINE DATE
April 9	4	March 26
May 7	5	April 23
June 4	6	May 21
July 2	7	June 18
July 30	8	July 16
August 27	9	August 13
September 24	10	September 10
October 22	11	October 8
November 19	12	November 5
December 17	13	December 3

**MOKULEIA · WAIALUA · HALEIWA · KAHUKU · LAIE**

*The North Shore News is published every 4 weeks and available at area businesses including Waialua, Kahuku and Wahiawa libraries.*

*The North Shore News is also available for free in color by email or by mail subscription please contact us. Mahalo for your continued support!*

*"The North Shore's most popular publication" since 1970  
(808) 780-8037 · NSNHaleiwa@gmail.com*

## NORTH SHORE FOOD BANK

IG:@nsfoodbank

Sponsors: Hawaii Food Bank  
& Aloha Harvest

### DISTRIBUTION UPDATE

**3rd Wednesday of the Month  
at Kaiaka Bay Beach Park**

*Wednesday, March 19, 12 noon*

*Wednesday, April 16, 12 noon*

*Wednesday, May 21, 12 noon*

Visit us at the WCA every 2nd Wednesday  
of the month 10am-1pm

For more information and  
donations contact :  
Linda (808) 780-8037





The North Shore News is published every four weeks and available at area businesses and locations. Digital copies are emailed in color. The North Shore News is also available by mail subscription.

**PRESS RELEASE POLICY:** Submit press releases, email to the Editor. Releases should be viable news stories or human interest stories and are published on a space available basis only. You may attach photos. We reserve the right to edit and/or refuse all submissions including advertising.

**EDITORIAL POLICY:** The North Shore News is a community paper. We welcome articles, pictures and Letters to the Editor.

**CLASSIFIED AD RATES:** Classified ad rates are \$6.00 per line with up to 27 characters per line. The box ads are \$40.00 per column inch. Submit classified ads by email. Phone calls are always welcomed.

Views expressed by our contributing writers and advertisers do not necessarily reflect the view of the management and staff of the North Shore News. All rights reserved. Reproduction in a whole or part without permission is prohibited. 2025

#### Editor & Classifieds

Linda Seyler

#### Typography

Downtown General Store

#### Contributing Writers

Betty Depolito

Richard Sterman

Noah Grodzin

Councilmember Matt Weyer

Representative Amy Perruso

#### Photography

Banzai Productions

Bill Romerhaus

North Shore Photography



Please recycle this newspaper.

# CLASSIFIEDS

## SERVICES

### LegaSea Energy Solar

Christensen Bros.  
Construction Inc.  
since 2005

Specializing in off grid livin'  
Custom homes  
License BC 27977 -  
**808-351-4657**  
@legasea\_energy

### BEE HIVE

\$250.00/ 10 FRAME BEE HIVE  
LANGSTROTH  
WILL PROVIDE ASSISTANCE  
MASTER BEEKEEPER  
682-1955.

### LOCAL AUTO BODY & PAINT

Call Rick (808) 216-9419

### Andres Plumbing Residential & Commercial

License #C-24500  
35 yrs experience  
**808-256-7337**

### HONEY BEE HIVE SWARM

Removal & Relocation  
(808) 724-9966

### ANGELS PLUMBING

Repairs  
Remodeling  
Renovation

**638-7878**  
Lic. #C12004



## FREE ADS

Garage & Yard Sales,  
Reunions, Lost & Found.  
Email ad to:  
NSNHaleiwa@gmail.com

### HAWAII TREE CO.

Trimming & Removal  
Professional-Reliable  
Free Estimates  
808-462-2749

### ICC MOBILE DETAILING

Interior deep cleaning,  
water spot removal,  
paint enhancement.  
Professional car detailing  
at the comfort of your home.  
**808-638-1900**

### LocalHawaiianProduce.com

Eat something green  
everyday  
Food is medicine  
Organic produce delivered

### Paumalu Electric Inc.

new construction,  
remodels and rewiring,  
service and repairs.  
Lic. C-18074 808 638 9054

### Retired General Contractor

30 plus years -Specializing  
in home and structural  
repairs, fencing, painting  
and more.

Gregg Biemann  
**808-778-0234**

### North Shore Mobile Welding Services Custom Gates (aluminum etc...)

(808) 223-4840 Ryan

### North Shore Dump Runs

Call for Prices  
(808) 223-4840

### GERMAN CAR SERVICE

Professional-Qualified  
Technician  
Call Gary  
637-6800

### North Shore Martial Arts Self Defense Kenpo Karate

Free Community Sponsored  
at the WCA -Haleiwa Gym  
Mon & Wed 7pm -8pm  
Kelley 808-216-4335

### Noah Boy Pump Service LLC

Cesspool, Septic &  
Porta Potty Sewage Waste  
Contact:  
Noah **(808) 489-7850**

## BUSINESS SERVICES CENTER

Fast & Convenient Copy, Fax, Scan,  
Computer/Internet, Laminate, & More



Across from  
the Haleiwa  
Post Office

**637-4558 • gonorthshore.org**  
**#gonorthshore**

### Advertise Here

Place your classified ad  
here! Classified ad rates:  
\$6 per line, \$40 for a box  
ad. For information or to  
submit your ad email  
NSNHaleiwa@gmail.com

### Smoking Boar & The Coconut Local Style Restaurant Catering Available

67-456 Goodale Ave Waialua  
All food made fresh to order!  
808-282-8162

## HOW TO CONTACT THE NORTH SHORE NEWS

Letters to the Editor, and other items submitted for publication consideration  
may be sent to us via:

MAIL: P.O. Box 117, Hale'iwa, HI 96712

E-MAIL: NSNHaleiwa@gmail.com

NSN4Linda@gmail.com

PHONE: (808) 780-8037

www.northshorenews.com



# CLASSIFIED ADS

**Next Issue - April 9, 2025**  
**Deadline Date - Mar 26, 2025**

**Would you like  
to receive  
the North Shore News  
via email in COLOR!**  
 Just send us a message at:  
 NSNHaleiwa@gmail.com

**OFF da ISLAND**  
 Are you leaving Oahu on vacation or business? Do you live on a neighbor island, the mainland or foreign country and subscribe to the NSN? Send us a photo with someone in front of a sign or landmark holding a copy of the NSN or send a photo without the NSN. Email your photo with a caption including names, place of residence and photo location.  
 NSNHaleiwa@gmail.com

**ANIMAL CRIME  
STOPPERS  
955-8300**  
 Be their voice.  
 Be anonymous.  
 Loyalty works both ways.  
 HonoluluCrimeStoppers.org

**FREE ADS**  
 Garage & Yard Sales,  
 Reunions, Lost & Found.  
 Email ad to:  
 NSNHaleiwa@gmail.com

**NORTH SERVICE CENTER  
2nd Wednesday Every  
Month  
10am - 12:30pm  
At the WCA (Haleiwa Gym)  
Wednesday, April 9**  
 Please Join Us!  
 ALL are welcome!  
 Assistance in housing, food,  
 health, and fellowship by:  
 IHS, NS Food Bank, Ko'olauloa  
 Health Center, River of Life  
 Mission, U.S. Vets, Ke Ala Hou  
 West-Oahu, SNAP,  
 Premier Benefits (Medicare),  
 Ke Ola Mamo, Education for  
 Homeless Children & Youth  
 and more...  
 To join us as a provider or for  
 more information call  
 Linda at 808.780.8037

North Shore Food Bank  
 IG @nsfoodbank

## HELP WANTED

**Household Help**  
 Beachfront Estate  
 16 hours per week  
 808-637-0808

**MATSUMOTO  
SHAVE ICE**  
 Now Hiring!  
 Apply in person daily  
 10am - 6pm  
 808-637-4827


## FOR SALE

**OCEAN VIEW 5 ACRE  
HALEIWA FARM  
LOTS FOR SALE  
\$700K AND UP**  
 Ralph Gray RA  
 Lic# 57803  
 Hawaii Homes  
 International LLC  
 HawaiianBeachfront.com  
 808-295-0704

## FOR RENT

**OFFICE SPACE  
FOR LEASE**  
 Haleiwa Town Center  
 wschoettle@gmail.com  
 808-637-8000

## MISCELLANEOUS

  
**HISTORICAL TOURS**  
 Walking tours of historic  
 Hale'iwa and  
 Waialua Towns by local  
 historian  
 \$20 by appointment  
 808-342-8557  
 info@WaialuaHistoricalSociety.org

**Garage Sale**  
**St. Michael Church**  
**Friday, March 21**  
**9am -2pm**  
**Saturday, March 22**  
**9am-2pm**  
 Come and find treasures  
 among all the clothing,  
 kitchen items, tools, toys,  
 books etc...

**Drug Problem?**  
**Call Narcotics**  
**Anonymous**  
**808-734-4357**  
 Meeting 7pm Mondays  
 Cottage 2 behind Waialua  
 Community Asso.  
 66-434 Kam Hwy Haleiwa

**The Wushu Kung Fu Federation- Monday & Wednesdays, 9:30am-11am at the Waialua Rec Ctr** would like to introduce this art form to the community. The highest vista of martial arts training (Kung Fu, Tai Chi, Ba Gua) should be where a person's spirit, will, strength, body, and heart are in balance. In practicing martial arts, one should stress not only martial art, but moral cultivation as well. The higher your martial arts standard, the deeper your humility and the more you are respected. Martial arts is not only a healthful sport, but also a means of improving one's own self temperament. We look forward to training with you!  
 For info: 808.489.5426 Wushu-kungfufederation@gmail.com

Assistance for houseless veterans with or without families or veterans at risk of becoming houseless. Please visit Mark with US Vets at the NS Service Center. Every 2nd Wednesday of the month at the WCA (Haleiwa Gym) 10am -1pm.

**Coconut Rhinoceros Beetle response:**  
 for info visit hdoa.hawaii.gov/pi/main/crb/  
 email: BeetleBustersHi@gmail.com  
 phone: (808)643-7378  
 call or text: (808)678-5244

**Hawai'i Statewide Marine Animal Stranding, Entanglement, and Reporting Hotline**  
*Includes stranded/injured sea turtles, monk seals, dolphins, and whales.*  
**Phone: (888) 256-9840**

**Abandoned Vehicles Hotline**  
 808-768-2530  
**Street Light Repair**  
 808-768-8387  
**Building Permits**  
 808-768-8000  
**Pothole Hotline**  
 808-768-7777  
**Report Illegal Dumping**  
 808-768-3203

**Tutu's Treasures Thrift Shop**  
 in Hauula is open every Wednesday and Friday from 9-11:30am. Donations accepted during business hours. For info call Ella 808-778-0086

**Hauula Community Center Last Friday of every month Prevent Type 2 Diabetes 6pm - 7pm**  
 By Dr. Amy Nielsen, DCN with education and support groups

**KQNS 107.3 Christian Radio**  
 Inspirational, Health, Music, Addictions, Marriage, Prophecy, Stories, etc...

**North Shore Serenity Al-Anon Family Group**  
 meets 6:30 pm Wednesdays at St. Michael's Church, Outreach Room, 67-340 Haona St, Waialua. Participants may also attend virtually via Zoom ID 84783266578 Password 809980.  
 Open to anyone who believes his or her life may have been affected by someone else's drinking.  
 Additional information available at [www.al-anon.org](http://www.al-anon.org); or by calling 808-546-5647



# MĀLAMA LOKO EA FISHPOND

For more information: [www.lokoea.org](http://www.lokoea.org) | 808-637-3232 | [info@lokoea.org](mailto:info@lokoea.org)

## EXPLORE

*Loko ea Fishpond*

### HIGH SCHOOL SPRING BREAK PROGRAM

----- **March 19-21, 2025** -----

With an overnight camp from Thursday to Friday



Scan or click  
to sign up



#### *Kilo and kaiāulu*

During Spring Break, high school students participate in our Nā Pili Wai program which gives them a peek into the ahupua'a system that contributes to a loko i'a and introduces them to ways they can become resilient in their own communities.



#### *Loko i'a restoration*

Haumāna explore and examine Loko ea, wai and kai while learning and enveloping themselves in mālama 'āina. Our focus will be on how we can enhance ourselves, our kaiāulu, and the spaces around us through fishpond restoration.



#### *Camp under the stars*

Enjoy Loko ea like no other, in the serenity of the evening as we take a deeper look into the space at night. Camping out to kilo (observe) things that don't happen during the day.

**REGISTER NOW!**  
**GRADES 9 - 12**



**NĀ  
PILI  
WAI**



Nā Pili Wai Spring is a FREE program of the Mālama Loko Ea Foundation with generous financial support from Kamehameha Schools



## LOKO EA MARCH 2025 EVENTS

### Mele & Mo'ōlelo

Saturday, March 29, 2025  
6:00pm - 8:30pm

Stories through music, 'ono pūpū's, and sunset at Loko ea.  
What could be better?



Check out our website  
to see more info

### COMMUNITY WORK DAY

Saturday, March 15, 2025  
9:00am - 12:00pm

Every 3rd Saturday of the  
month. Lunch provided.