



**"E Ala Na Moku Kai Liloloa"**



**MĀLAMA  
LOKO EA FISHPOND**

**SPECIAL EDITION  
See Pages 11-15**

**NORTH SHORE NEWS January 12, 2022 VOLUME 39, NUMBER 1**



*Loko ea Fishpond Photo: MLEF*

## **O ke kahua mamua, mahope ke kūkulu—Build Upon a Strong Foundation**

A little more than a decade ago, a kāhea went out to the community to solicit support for restoring Loko ea Fishpond, a historically significant cultural site nestled on the North Shore of O’ahu. Loko ea is one of two loko i’a, ancient Hawaiian fishponds, located

in the ahupua’a of Kawailoa within the moku district of Waialua. The call was answered by James Estores, Benson Lee and a small group of community members who established Mālama Loko Ea Foundation in 2009. Today the restoration of Loko ea represents

the timely re-imagination of what it means to honor Hawaiian culture and support a thriving, sustainable community in modern-day Hawai’i. Mālama Loko Ea Foundation remains steady in addressing the needs of the community as it implements a comprehensive plan to restore this wahi pana, and the traditional Hawaiian aquaculture practices, that will inform the development of a sustainable ecosystem and community.

PERMIT NO. 1479 HONOLULU, HI PAID U.S. POSTAGE ECRWSS PRSRT STD	<b>RESIDENTIAL CUSTOMER</b>  *****ECRWSSIEDDM*****
--	--

# Juliana Simone (R) CRS

JOINS  
**COMPASS**

To my friends, clients and neighbors on the North Shore, I'm so pleased to announce that I've joined COMPASS, an innovative, sophisticated and tech-forward company making incredible waves in the real estate industry.

A big mahalo to all of the clients and colleagues I've had the fortune of working with, who have all made Sunset Homes and my office in Haleiwa such a highlight over the past 20 years. It's been a truly rewarding experience but I'm thrilled to embark on this new partnership with COMPASS and further empower my clients with their real estate needs.

Through exclusive COMPASS programs like Concierge, we can maximize the value of your home with no upfront costs or fees. Please allow me to introduce you to this program and share all that Compass has to offer. Let's connect soon in this new year. Until then, wishing you all good health, love, and prosperity!



808-220-4702 RB-15582  
Juliana.Simone@Compass.com

Juliana Simone is a real estate broker affiliated with Compass, a licensed real estate brokerage. Both abide by Equal Housing Opportunity laws. Compass Concierge: Rules & Exclusions plus additional terms and conditions apply. Compass offers no guarantee or warranty of results.



## COVID-19 Update

*By: Daniel Lum, MD*

Omicron is out there. The North Shore is experiencing its biggest wave of COVID-19 infections since the start of the pandemic. Get tested if you feel sick with: fever or chills, cough, shortness of breath or difficulty breathing, fatigue, muscle or body aches, headache, new loss of taste or smell, sore throat, congestion or runny nose, diarrhea, nausea or vomiting.

There are new treatments such as monoclonal antibodies (given intravenously or by injection) and new oral medications which can prevent you from getting seriously ill or dying from COVID-19. These treatments are most effective if given in the first few days of symptoms.

You are at high risk for getting seriously ill or dying from COVID-19 if you have any of the following: less than 1 or over 65 years of age, very overweight, diabetes, asthma, heart disease, high blood pressure, chronic lung, kidney, or liver disease, pregnant, cancer, immune suppression from things such as HIV infection or organ transplant treatment, developmental disorders such as CP or Down Syndrome, dementia, mental health condition, or are technology dependent (e.g. tracheostomy or gastrostomy).

Protect yourself by getting vaccinated against COVID-19. If you are already vaccinated (2 doses of Moderna or Pfizer or 1 dose of Johnson and Johnson), and have not gotten a booster, get one. If it has been 6 months since your last dose of Moderna or Pfizer, or 2 months since your dose of J&J and you are 16 years or older, you're eligible for a booster. You are 6-12 times more likely to be hospitalized from COVID-19 if you are unvaccinated than if you are fully vaccinated. You are 20 times more likely to die if you are unvaccinated than if you are vaccinated and boosted.

We provide testing, monoclonal antibody treatment, and vaccinations for COVID-19 at the Ko'olauloa Health Center.

**Ko'olauloa Health Center**  
**808-293-9231**

*We accept everyone regardless of ability to pay. Improving the quality of life for all. Imua!*



# Valentine's Day Dinner

AT THE PROUD PEACOCK  
WAIMEA VALLEY

Sunday February 13 • 6:00pm

### *Appetizer (shared plate)*

#### **CHARCUTERIE BOARD**

Toasted Almonds, Strawberries, Camembert, Chèvre, Manchego,  
Duck Liver Mousse, Locally-Cured Prosciutto, Sesame Lavash, House-Made Pickles

### *First Course (shared plate)*

#### **½ DOZEN KUALOA OYSTER**

Shiso Mignonette & Chili Pepper Water Gelé

### *Second Course*

#### **CRAB & ASPARAGUS SALAD**

Butter Lettuce, Blood Orange, Celery, Avocado, Shallots

### *Third Course*

#### **HAWAIIAN-RAISED FILET MIGNON**

'Ulu Purée, Grilled Oyster Mushroom, Ume Demi-Glace,  
Red Veined Sorrel, Smoked Hawaiian Peppercorn & Salt

### *Dessert*

#### **CHOCOLATE-DIPPED PARADISE**

Chocolate Fudge Cake, Caramel-Compressed Banana,  
Dark Chocolate, Guava Mousse Hibiscus Sauce

**\$173.00 FOR 2 (\$86.50/PERSON)**  
**EXCLUDES ALCOHOL**

BOOK ONLINE



**WAIMEA VALLEY**  
HI'IPAKA LLC

Open Tuesday - Sunday, 9am - 4pm

Closed Mondays after January 4

Call: (808) 638-7766

@waimeavalley



@waimeavalleyoahu



**WHERE HAWAI'I COMES ALIVE**

**WAIMEAVALLEY.NET**



Aloha,  
I hope everyone had a wonderful holiday season with family and friends and am wishing everyone the best in 2022. The New Year brings us all new opportunities to work toward bettering our communities. At the City Council, I am looking forward to completing long-standing community projects and continuing to advocate for improvements to vital North Shore infrastructure like drainageways and stream outlets.

I have included with this piece a copy of the City Council 2022 calendar where you will be able to see our scheduled committee and council meetings. In March and running through to the end of June, the council begins deliberations on approving the City's operating and capital budgets. During this time, City Councilmembers are able to work with their constituents to include funding for projects to improve their communities. Last year, we focused on stream maintenance issues which were pulled into focus after the April 2021 flooding by appropriating funding for a stream and drainage ways maintenance program. We also worked closely with the HESD Ocean Safety division to address some of the concerns they experience including adding funding for an emergency bypass entry to Waimea Bay Beach Park to allow first responders better access to the park.

I am excited for what 2022 has in store and am looking forward to working with you all on projects for

the North Shore. Please feel free to contact my office at 768-5002 or [htsuneyoshi@honolulu.gov](mailto:htsuneyoshi@honolulu.gov) if you have any questions or concerns that we can assist with. MAHALO!

**rajanee**  
thai cuisine  
at Hale'iwa Store Lots  
Take Out Only 12:30-8pm  
Masks Required  
808-784-0023

**2022 CITY COUNCIL CALENDAR • CITY AND COUNTY OF HONOLULU**

All meeting dates scheduled on this calendar are subject to change. Please check our website ([www.honolulu.gov/council](http://www.honolulu.gov/council)) for the latest information.

Month	SUN	MON	TUES	WED	THURS	FRI	SAT
JAN							1 New Year Day
	2	3	4	5	6	7	8
	9	10	11	12	13	14	15
	16	17	18	19	20	21	22
FEB	23	24	25	26	27	28	29
	30	31					
MAR							
APR							
MAY							
JUN							
JUL							
AUG							
SEPT							
OCT							
NOV							
DEC							

**Committee Schedule – At A Glance**  
**Tuesday:**  
 9:00 a.m. Transportation, Sustainability & Health  
 10:30 a.m. Housing & the Economy  
 1:00 p.m. Executive Matters & Legal Affairs  
**Wednesday:**  
 9:00 a.m. Budget  
 1:00 p.m. Public Infrastructure & Technology  
 2:30 p.m. Public Safety  
**Thursday:**  
 9:00 a.m. Zoning & Planning  
 2:30 p.m. Parks & Community Services  
 As Needed: Executive Management



General: City Council meetings will hold in person with an livestream at 10 a.m. in the Council Chamber on the 3rd floor of Honolulu Hall, 338 South King Street.  
 During the pandemic, the public is encouraged to participate via video conference or via written testimony.  
 Remote Council or Committee meetings may be held at any time when deemed necessary.  
 Meeting dates, times and locations are subject to change.  
 Live and recorded broadcasts of regular City Council and Committee meetings are broadcast on One Community Television, Spectrum Channel 54 and Hawaiian Telecom TV Channel 84.  
 Live meetings and archived videos of previous meetings can be viewed at <http://www.honolulu.gov/council>.

# Full Cycle Takeout: (Re)building the Hawai'i Reuse Economy One Takeout Container at a Time

You've seen the overflowing garbage cans; litter polluting shorelines, trash floating by when you paddle out. It's heartbreaking, but we can do something about it. It's a new year; let's make one of our resolutions supporting zero waste takeout!

30% of that debris on the shorelines comes from disposable takeout packaging, but realistically to-go orders aren't going anywhere. Takeout orders have increased 300% since 2015, and so has all of that packaging waste and increased costs for businesses. We need new models for the takeout that move Hawai'i toward zero waste, while supporting businesses and customers' needs. That's where Full Cycle Takeout comes in.

Full Cycle Takeout is Hawai'i's first full-service reusable container program, and it's FREE! Choose a reusable container for your meal, check-out on the Full Cycle Takeout web app, and return to one of our 3 return stations within a week. Containers are collected, sanitized, and restocked by Full Cycle for a truly circular, waste-free system. This grant-funded pilot program is running in Hale'iwa and Waiialua with 6 diverse restaurant partners: Hale'iwa Joe's, Rajanee Thai, The Cosmic Kitchen, Cholo's, Wicked HI Cafe, and Gordo's.

Our goal for this pilot program is to work out all of the kinks so choosing reusable is convenient, easy, and impactful! From there, Full Cycle Takeout can expand beyond the North Shore to all of O'ahu. Imagine hundreds of thousands of customers every day choosing takeout in reusables; those overflowing trash cans and polluting litter, all becoming a thing of the past. We can make this a reality!

Sign-up on the [Full Cycle Takeout web app](#) to save time at the register. Tag us when you use the program @fullcycletakeout, and send us all your feedback at [info@fullcycletakeouthawaii.org](mailto:info@fullcycletakeouthawaii.org). Mahalo North Shore for helping us make zero waste takeout a reality!



Full Cycle Takeout at Rajanee Thai Photo: Erik Kabik

**North Shore News**  
Publication Date: February 9  
Deadline Date: January 28



Full Cycle Takeout at Haleiwa Joes Photo: Erik Kabik

**PAALAA KAI BAKERY**  
[www.pkbsweets.com](http://www.pkbsweets.com)

**PKB**  
"Da Best"

*Home of the Snow Puffy*

**2022**

- Enjoy beach on North Shore
- Grab treats from PKB
- Sign-up for the daBest VIP card program at PKB to save with every visit!

[www.pkbsweets.com](http://www.pkbsweets.com)

## The Bobby Benson Center

Major Dave Benson, formerly of the Honolulu Police Department, watched his son Bobby go deeper and deeper into drugs and despondency while well-meaning friends and professionals told him, "He'll grow out of it." Bobby didn't. At the age of 15, he took his life. Major Benson took tragedy and turned it into hope for thousands of youth in Hawaii by creating a safe and therapeutic space for them to get help.



*Bobby Benson Center Staff*

Established in 1990, The Bobby Benson Center has been a place of safety and refuge for youth throughout the state. The mission of The Bobby Benson Center is to serve individuals and families affected by substance use and co-occurring disorders in Hawaii, employing best practice through a continuum of care services. Our vision is to connect, empower and transform lives. Giving individuals the knowledge and skills needed to reach their highest potential.

The Bobby Benson Center understands that addiction is a disease and any destructive behavior can be changed. Recovery is possible! All Bobby Benson Center staff, are trauma-informed and have experience in the field.

The Bobby Benson Center in addition to offering residential treatment services for adolescents (13 to 17 years old) Bobby Benson Center officially opened up Continuum of Care Services (which includes Intensive Outpatient and Out Patient services) for adolescents and adults in October 2021.

Bobby Benson Center Residential offers diverse outing activities, engaging school services, cultural and therapeutic activities that empower the youth. With our structured schedule the youth are able to grow physically, socially, psychologically, and spiritually. Outings to the beach, movies, ice skating, and other activities will help the youth learn to have fun in safe and healthy ways.

Continuum of Care Service at Bobby Benson Center offers all the support you would get in Bobby Benson Center Residential Program except you would continue to live at home. Service include but are not limited to: Outreach, Screening/Assessments, Placement Determination, Individual & Group Counseling, Anger Management, Motivational Enhancement, Cultural Discovery, Substance Abuse Counseling, Therapeutic Recreational Outings, Life Skills/Skills Building, Dialectical Behavior Therapy (DBT), and Relapse Prevention.

If you or someone you love is suffering from substance use or co-occurring disorders please reach out to us for help at Phone: (808) 293-7555. If you wish to support our efforts you can donate gently used clothing, hygiene products or money via checks to the Bobby Benson Center 56-660 Kamehameha Hwy; Kahuku, HI 96731.



Bobby Benson Center would like to thank The Clarence T.C. Ching Foundation for the generous donation of \$25,000 to assist in the establishment of our Continuum of Care services located at 2045 Kamehameha IV Road, Honolulu, HI 96819. Together we are improving the lives of Hawaii's people and we truly are grateful for the support of The Clarence T.C. Ching Foundation.

We're organizing to ensure  
that **our communities** are  
welcoming, inclusive, & supportive of  
**our LGBTQ+**  
friends, families, and neighbors.

With Hawai'i's historic embrace of  
**māhū, aikane**, and other expressions  
of gender and sexual diversity,  
it's **our kuleana**.

Join Us!

North Shore Ko'olau  
Diversity Collective





**This and That**

Happy New Year! Let's make this a great, positive year, OK?

**The Cesspool Problem**

Every day in Hawaii, 88,000 cesspools release nearly 53 million gallons of untreated sewage into the ground, adversely affecting groundwater and coastal waters. Most homeowners are probably not aware that all cesspools in Hawaii will need to be closed by 2050, only 28 years from now, sooner than a new 30-year mortgage term. To accomplish this, a variety of solutions will need to be implemented, such as connection to existing sewage systems where possible, new package plants for smaller, remote neighborhoods, upgrading individual systems to septic tanks, etc.

**Waialua Town Hall**

Rep. Matsumoto and I are hosting an online presentation by WAI, Wastewater Alternatives and Innovations, on January 27th, from 6:30 to 8:00 p.m. The meeting is targeted for Waialua residents due to the high concentration of cesspools in the area, but it is open to all. I helped host a similar presentation for Kahaluu a few months back. Please register at [tinyurl.com/townhallwaialua](http://tinyurl.com/townhallwaialua) and login for this informative meeting.

**Laniakea**

The parking area at Laniakea was temporarily closed due to the mud bog created by the rains. The city is looking into laying out gravel to help provide a more reliable surface, and the DOT is planning to alter the barrel locations to widen the service area and move the crosswalks closer to the bus stops. Keep in mind this is a temporary test project that can be modified while DOT considers longer range solutions.

**Kawaihapai (Dillingham) Airfield**

We continue to work with DOT Airports, the Army and the non-airport water users on repairing the leaky water system and transferring it to a new entity, probably a cooperative. It is a complicated exercise, but must, and will, be resolved. The threat of early closure was removed in late September, so the existing lease remains in effect until 2024. The Army and DOT-A continue to work on term of a long-term lease extension. We have made great progress, but the job is not yet done.

**Kukaniloko**

A blessing and dedication was recently held for the installation of a new marker along Kamehameha Hwy at Kukaniloko. While other regions around Oahu are known as moku, this area is known as a kalana and it includes four areas: Kukaniloko, Lihue, Halemano, and Wahiawa.

My phone number is 808-586-7330 and email address is [SenRiviere@capitol.hawaii.gov](mailto:SenRiviere@capitol.hawaii.gov). Follow us at [FaceBook.com/SenatorGilRiviere](https://www.facebook.com/SenatorGilRiviere) or online at [SenatorRiviere.com](http://SenatorRiviere.com). Mahalo.



**PAALAA KAI  
BAKERY**  
[www.pkbsweets.com](http://www.pkbsweets.com)

  
*"Da Best"*

Look out for our  
New Year's Special

2022

Buy 3 Sada's Malassadas and get  
10% OFF - TRY 6 and get 15% OFF or  
SETTLE for 12 and get 10% OFF plus  
a FREE Snow Puffy!

This offer cannot be combined with  
other promotions or daBest VIP card  
discounts. Offer valid from  
January 12 - 25, 2022. Mahalo!



**Representative  
Lauren  
Matsumoto  
Serving You in District 45**

**Aloha Friends and Neighbors!**

Happy New Year! I hope that you and your families had a wonderful holiday season to close out 2021. For most of us, last year was full of ups and downs. As I reflect on everything that has happened I am struck by how resilient our community has been. I am thankful to see our students continue to persevere in new learning environments. I am grateful to the community members who have banded together to help their neighbors in times of need. Most of all, I am hopeful for our communities as we continue to rebuild in the midst of the pandemic; moving from survival back to stability and strength.

As we approach opening day for the 2022 legislative session I look forward to interacting with you more throughout the legislative process. With the new year comes new goals, new hopes, and of course, the enactment of new laws from the previous legislative session. Here is a short list of the new laws that will affect our communities:

**ACT 5** Microchips are required for all cats and dogs in Hawaii.

**ACT 182** Dogs must be safely restrained in a manner that is not likely to cause them danger of being unable to reach food/water or tangled up. Dogs under six months cannot be tethered unless actively monitored.

**ACT 51** Criminalizes intentionally or knowingly capturing, trapping, or killing a shark, without permit, in state waters with penalties ranging from \$500 to \$10,000.

**ACT 175** Moves Hawaii Farm to School program from Dept. of Ag. to Dept. of Ed. and aims for 30% of food served in public schools be grown locally by 2030.

**ACT 156** Adds eligibility for UH Hawaii State Scholars Program for students that received two or more years of special education services between grades 7 and 12 who graduate with a 3.0 grade point average or better.

**ACT 177** Double-Up Food bucks program expanded to include both locally grown fruits and vegetables as well as healthy proteins that are included in the program, without the \$10 a day limit.

**ACT 148** Raises the age in which guns must be secured in all homes from 16 to 18 years.

These are seven of the 238 laws that have gone into effect after the 2021 legislative session. This is not a list of legislation I introduced, nor does it reflect


my voting record or legislative priorities. If you have any questions, please do not hesitate to contact our office. For a full list of laws, visit my website at [www.RepMatsumoto.com](http://www.RepMatsumoto.com).

I also wanted to take this opportunity to invite you to a Town Hall with WAI: Wastewater Alternatives & Innovations, an environmental non-profit organization, Thursday, January 27th at 6:30PM. We will be discussing the cesspool issue in Hawaii, specifically North Shore. They will present new technology options for cesspool conversions, how to qualify for loans and grants for the conversion, and will be available for questions from the community.

Every day thousands of cesspools release millions of gallons of contaminated water into our groundwater which endangers the health of our community. In 2017 a bill was passed that would ensure all cesspools in Hawaii would be converted by 2050. Waialua is classified as a Priority 3 Area by the Department of Health, meaning that cesspools pose a potential impact on sensitive waters. The good news is that there are solutions to this issue. Join Senator Riviere and myself as we host the Virtual Town Hall meeting via Zoom with the WAI team to discuss these solutions. To register for this event, you can visit my website [www.RepMatsumoto.com](http://www.RepMatsumoto.com).

As always, please feel free to contact me if you have questions or concerns about our community. Call me at (808)586-9490, email [RepMatsumoto@capitol.hawaii.gov](mailto:RepMatsumoto@capitol.hawaii.gov), or visit [RepMatsumoto.com](http://www.RepMatsumoto.com).

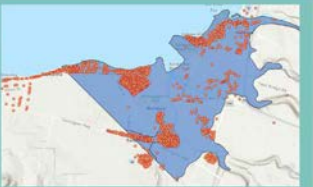
## TOWN HALL MEETING




**WAI** WASTEWATER ALTERNATIVES & INNOVATIONS

**JANUARY 27 6:30 - 8:00PM**  
ON ZOOM OR CALL IN BY PHONE

**CESSPOOLS ON THE NORTH SHORE POLLUTE COASTAL WATERS, AND MUST BE CONVERTED BY 2050**





Join this Town Hall to learn about the cesspool issue and possible solutions for your home and your community.

*Hosted by WAI: Wastewater Alternatives & Innovations and local legislators, with an expert Q&A panel*

**HOW TO CONVERT CESSPOOLS AND REDUCE POLLUTION**

- Learn about new technology for cesspool conversions
- Learn how to qualify for available loans and grants
- Ask the WAI team and your government representatives your questions about cesspools, alternatives, water quality & more

Register at: <https://tinyurl.com/townhallwaialua>  
Dial in at: +1 253 215 8782 Meeting ID: 892 0587 3129





2021 Anahulu Bridge Holiday Lighting - Mahalo to our sponsors Joe Lazar, David and Richard Serman and Joe Green

 A collage of images related to the Hale'iwa Farmers Market. It includes:
 

- Top left: Several blue wire baskets filled with bright red cherry tomatoes on a wooden table.
- Top right: A red plastic basket overflowing with fresh citrus fruits, including whole lemons and limes, and a sliced grapefruit.
- Bottom left: A close-up of several large, fresh mushrooms with gills.
- Bottom center: A photograph of the market entrance with a sign that reads "Hale'iwa FARMERS MARKET" and people walking through the aisles.
- Bottom right: A collection of food items including a bag of MYFIT cereal, jars of AWA Balm (Lava, Lala, and Lala), a pink smoothie cup, and two cups of ice cream.

 The right side of the collage features a black background with white text:
 

FARMLOVERS  
 HALE'IWA  
 FARMERS MARKET  
 at Waimea Valley  
 Thursdays 2-6pm  
 local farms food art  
 farm-fresh produce • gluten-free breads • slushies  
 smoothies • pasta • burgers • pizza • dim sum  
 poke • local artisans  
 Follow us @alohafarmlovers



## Ask the Doctor

Nash Witten, MD

### Dear Doctor, I saw aspirin on the news last week, am I supposed to still be on it?

As usual in medicine, *it depends.*

The U.S. Preventive Services Task Force (USPSTF) released a draft recommendation in October on the use of aspirin to prevent heart disease and stroke. These conditions are the leading causes of mortality in the United States, and previously aspirin was commonly prescribed as a means to prevent them. The benefit (preventing a heart attack or stroke) versus risk (bleeding in the stomach, intestines, and brain) of starting aspirin was weighed by the USPSTF in making their decision.

The first caveat to their draft recommendation is that the guidance does not apply to anyone with a clinical indication to be on aspirin, such as someone who already had a heart attack or stroke. This is called secondary prevention, or the prevention of recurrent disease, which is not the focus of this draft statement.

#1: The USPSTF **does not recommend** people 60 years or older to start aspirin to prevent a first heart attack or stroke.

#2: The USPSTF **recommends** people age 40 to 59 years talk with their physician about starting aspirin to prevent heart attack and stroke.

If you are currently on aspirin, or between age 40 and 59, and concerned about reducing your risk of a heart attack or stroke, let us know how we can help!

*Dr. Nash Witten is a Board Certified Family Medicine physician at the Queen's Health Care Centers Hale'iwa, located at 66-125 Kamehameha Hwy., Haleiwa, HI 96712. The clinic is accepting new patients, call 808-691-8501 to schedule an appointment. Submit questions to the doctors at [nsnaskthedoctor@gmail.com](mailto:nsnaskthedoctor@gmail.com).*

Free Covid vaccine and booster shots (J&J, Pfizer and Moderna) at Kaiaka Bay Beach Park, Wednesday, January 19th at the North Shore Food Bank distribution, 9am-1130am.  
Flu shots are also available.



### The North Shore Chamber of Commerce Wishing our Sponsors, Members and Residents A Happy, Healthy, Safe and Prosperous 2022!

The visitor center across from the Haleiwa Post Office and next to the Waialua Community Association is open Monday through Friday  
10:00am - 4:00pm  
for information and business services including: printing, scanning, faxing, lamination and computer use at reasonable prices and discounts for members.

Stop in and see us soon! Aloha



**Show your community pride!  
Provide an important service!**

## BECOME A VOLUNTEER

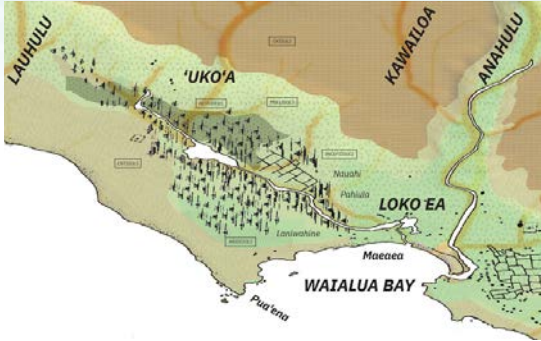
**THE NORTH SHORE  
CHAMBER OF COMMERCE**



**OFFICE & VISITOR  
CENTER  
NEEDS YOU!!!**

**Greet visitors & provide business services  
It's just a fun place to hang out a few  
hours!**

**[visitor@gonorthshore.org](mailto:visitor@gonorthshore.org); 808-637-4558**



Once a main focal point in the moku of Waialua, the Loko Ea-'Uko'a Fishpond Complex served as a food production resource for families throughout the area. Loko ea and 'Uko'a fishponds are in the ahupua'a (land division) of Kawaiiloa. It is a rare and significant cultural site that once provided fish for the reigning ali'i (chiefs) nestled on O'ahu's North Shore. The area was famous for its profusion of fresh water springs, flowing streams, abundance and fertility that could sustain families with bountiful harvests.



Over time, the Loko Ea Complex has unfortunately taken on an unprecedented amount of stress due to surrounding developments, neglect and a lack of continuous cultural practices. The focus now is **community** and **"Restoring Ea"** is our action plan to reinvigorate and rejuvenate Loko ea, 'Uko'a, and its community to reestablish the vital relationship between 'āina and kānaka. **Restoring Ea** is restoring food independence within our community—providing a rich source of aquatic protein to every family in the Waialua Moku. To achieve this goal we must first Restore Ea or life to the pond itself. Once the ponds are in optimum health, an environment conducive to producing the rich food source will be achieved and the community and pond will once again be connected.




---

The mission of Mālama Loko Ea Foundation is *to perpetuate the Native Hawaiian culture through education, land stewardship, and community building, while sustainably restoring our precious natural resources.*

---

For more information: [www.lokoea.org](http://www.lokoea.org) | 808-637-3232 | [info@lokoea.org](mailto:info@lokoea.org)

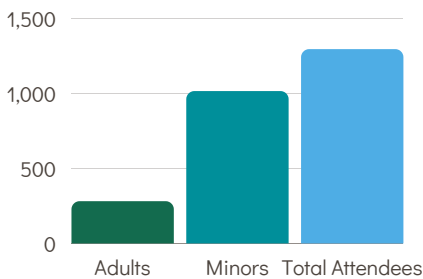
# MĀLAMA LOKO EA - Year in Review -

The vision of Malama Loko Ea is to connect the present to the past.

SY 2020-2021

## 1,295 TOTAL ATTENDEES

In SY 2020-21, MLEF hosted 1,015 haumana and keiki & 280 adults and educators in person.



## 53 VIRTUAL LESSONS

Due to COVID-19 restrictions, most educational programs were conducted through a virtual platform. We hosted 53 virtual learning events conducted in SY 2020-21, reaching 1,538 DOE haumana and 149 teachers.



In 2021 the Mālama Loko Ea Foundation (MLEF) was at a critical turning point. All of our efforts had to be leveraged to meet the pressing challenges of our times. Worsening food insecurity, social & economic inequities, rapid environmental degradations and climate change- which endanger all of us in Hawai'i and beyond.



\*\*Parents descriptions of summer program Nā Pili Wai.

## 2,069 PLANTING KITS

From November 2020, MLEF distributed over 929 planting kits to teachers/students as well as 400 kits to community members, totaling over 1,329 planting kits given out.

For the 2021-22 school year, 740 planting kits have been distributed to 16 schools across Ka Pae 'Āina o Hawai'i.

## 33 SCHOOLS ACROSS KA PAE 'ĀINA



Provided a cultural educational experience for over 40,000 youth & volunteers over the past 10 years, with an average of 5,000 to 6,000 visitors per year.



66.66% DOE schools served are Title I



Over 50% of the haumana visiting Loko ea identify as Native Hawaiian



## 5,026 PLATE LUNCH DISTRIBUTIONS

MLEF has completed 15 community imu plate lunch distributions in partnership with North Shore Food bank, serving 5,026 community members in 2020-2021.



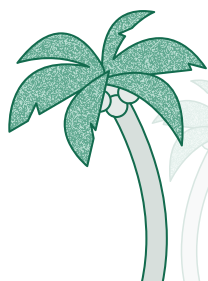
Providing a pathway for local youth to become interns and expand their career training.

Increased our land management research for our agriculture and aquaculture through utilization of a relational database platform.



**FOR MORE INFORMATION**

[www.loko ea.org](http://www.loko ea.org)



Visit us today and see how you can get involved with your community and loko i'a.



12 acres transformed back into productive use

# RESTORING EA: BUILDING PILINA THROUGH COMMUNITY ENGAGEMENT



Native Hawaiian Education Program  
**OFFICE OF**  
**Elementary & Secondary Education**



September 2021—Mālama Loko ea Foundation received a grant from the Native Hawaiian Education Program. With federal American Rescue Plan funding from NHEP, our Restoring Ea program, directly addresses systemic inequalities endured by Hawaiians which are magnified as a result of the pandemic. MLEF programs will:

- Increase the relevance of Hawaiian language and traditional knowledge
- Strengthen cultural identity and sense of place
- Restore the physical and spiritual relationship between kānaka and ‘āina
- Provide work and economic opportunity
- Promote leadership and professional development
- Support community resilience via food production and sovereignty
- Enhance community partnerships and alliances
- Deepen a sense of kuleana for protecting ‘āina



## FUTURE AMERICORP HOST SITE; HOLOMUA LEADERSHIP SERIES

The MLEF proposed program- *Holomua Leadership Internship*, is designed to nurture diverse ‘āina conservation by teaching emerging young professionals Hawaiian cultural knowledge in order to build capacity within the North Shore of O‘ahu.

For more info or to apply for current internship opportunities, visit [www.lokoea.org](http://www.lokoea.org)



## KAIĀULU—COMMUNITY PROGRAMS

None of this work could be done without the support of our *kaiāulu* (community members) and partners. Our *kuleana* (responsibility) is to continuously expand our engagement and grow our vision of connecting the past to the present. As we join with the local kumu, keiki, ‘ohana, and kūpuna to reconnect with this *wahi pana* (sacred place), we know that there is still much work to be done. It is our hope that our community has the opportunity to deepen their *pilina* (relationship) with Loko ea through mo‘olelo sharing, hana no‘eau workshops, ‘ohana projects, volunteer events, free community programs, and internships. Engaged community decision making are all paths to fulfill this vision as well as maintain this sacred loko i‘a.

**Stay Tuned for more community programs!**

MAHALO TO OUR KAIĀULU PROGRAM FUNDERS:



HAWAII COMMUNITY FOUNDATION  
 Amplify the Power of Giving

## Upcoming Events

Beginning  
**January 20**

### Free Virtual ‘Ōlelo Hawai‘i Classes

First 100 participants  
 Every Thursday, 29 classes  
 6pm - 7pm on Zoom

**January 22**

### Kumu ‘Ikena Workshop Series

‘Ulana Lauhala Intro  
 9am-noon

### ‘Ohana Workday

9am-11am

**February 05**

### Kumu ‘Ikena Workshop Series

Lomilomi  
 9am-noon

### ‘Ohana Workday

9am-11am

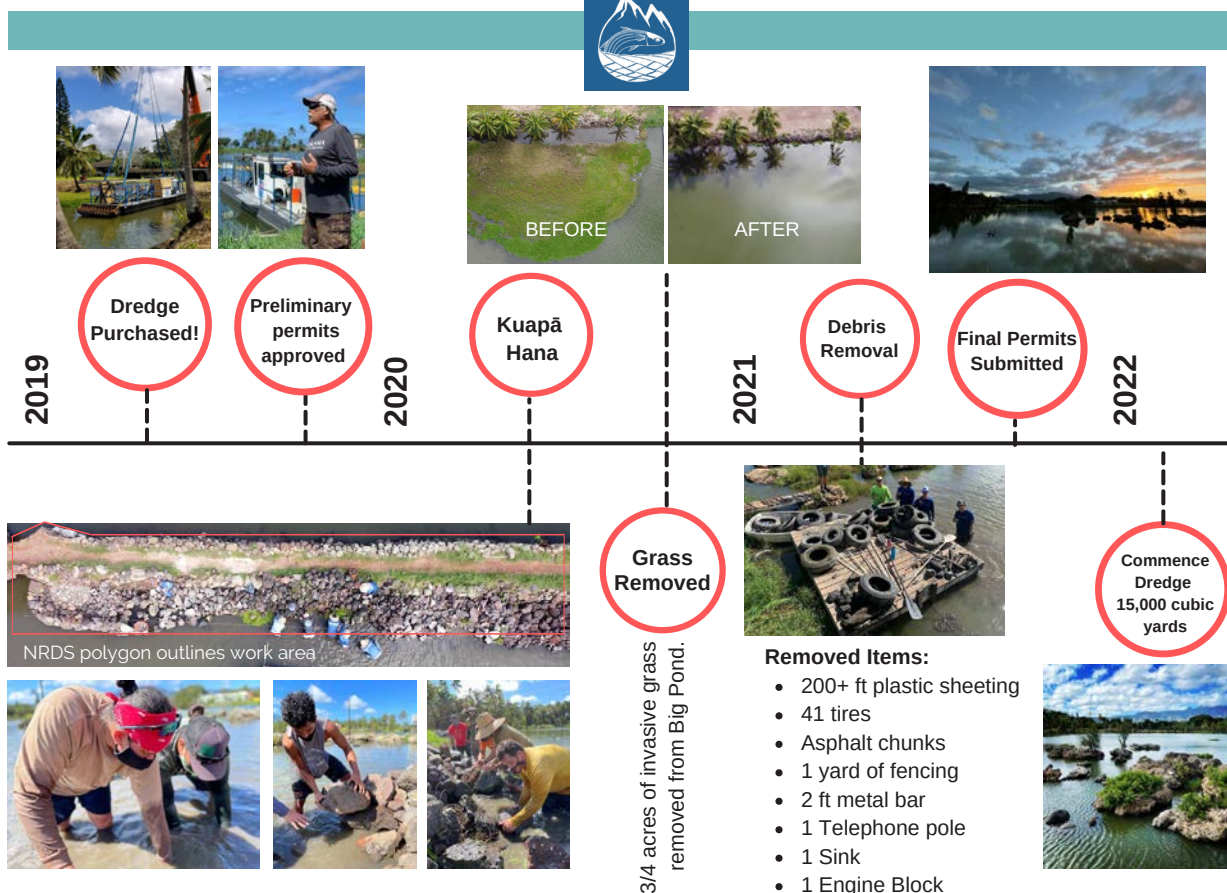


For more information and to register, visit our events page.



### Loke ea Restoration: Preparing for Productive Aquaculture

Mālama Loko ea Foundation (MLEF), alongside the community, has continuously worked since 2008 to restore Loko Ea back to a state of health and balance. MLEF is dedicated to rehabilitating a flourishing ecosystem through our ongoing habitat restoration program known as, Kulāiwi Nani (beautiful homeland). The removal of invasive grass species throughout the pond has reopened waterways to allow the native life and vegetation to thrive. Our program initiative plays a vital role, not only to Loko Ea itself, but also to the greater Waialua bay where marine life relies heavily on the natural food source provided by the nutrient rich water of Loko Ea. Today, we continue this stewardship with the support of partner organizations, funders and the help of countless volunteers who have made Loko Ea what it is today, doing our part in maintaining our **Kulāiwi Nani**.



## LOOKING TO THE FUTURE OF MĀLAMA LOKO EA FOUNDATION



In 2019, the Nakupuna Foundation funded a master site plan including a 2-story learning center.

**The Nakupuna Learning Center** will increase student success, cultivate vital community partnerships, and inspire individuals to become active members of an intellectually diverse and active learning community.

### The Nakupuna Learning Center will support:

- MLEF staff, local farmers and aquaculturists, University professors and research, Hi-DOE, Kamehameha School students, private school students, and community members work. All in a collaborative environment to create rich, engaged, rigorous conversation STEM learning and teaching experiences.
- Service, research, and teaching activities that promote leadership and stewardship in preserving and enhancing conservation, science, and culture in Hawai'i.
- Establish an educational resource to contribute to significant increases in student retention and graduation rates.
- Provide more cultural and land-based programs for community families.
- Home for the Holomua Leadership Program.

### Restoring Nā Loko O Waialua-'Uko'a Loko i'a

Loko ea Fishpond is linked physically and historically to 'Uko'a Fishpond. The ponds of 'Uko'a and Loko ea were considered as bountiful sources of choice fish and as such, were considered favorite locales of the ruling ali'i. Historic accounts document that King Kamehameha himself helped to restore the life-giving waters of this fishpond after his political consolidation of the islands in 1810.

The distinguishing feature of the pond was its ample fish stock, comprised of a distinctive school of 'anae and āholehole whose skin colorings emulated the markings of various types of other fish species.

The waters of 'Uko'a emanate from streams originating in the upper mauka lands and from lower springs. However, records from 1883 indicate that 'Uko'a Fishpond was believed to have a subterranean connection with the ocean, since the waters of the pond would be adversely affected during the presence of strong offshore conditions and stormy weather. Over time, water diversion, spring capping & erosion from intensive sugar cultivation carried soil into the area, and siltation and other changes were due to accommodating demands of the sugar era.

While 'Uko'a marsh is mostly being managed for bird wetland habitat today, remnants of the fishpond remain historically significant. The long-term vision of MLEF is to clear out 'Uko'a stream in order to once again reconnect the two fishponds of Waialua, restoring health and water flow for present and future generations.



**Do you live around 'Uko'a or Loko ea? Do you have stories to share?  
We would love to hear!**

Please reach out— [info@lokoea.org](mailto:info@lokoea.org) | 808.637.3232

**44th ANNUAL NORTHSORE MENEHUNE SURF CONTEST RESULTS****2021****4-6 BOY & GIRL SHORTBOARD**

1. Lani Santos
2. Zara Carvalho
3. Grey Given

**7-9 GIRLS LONGBOARD**

1. Chaya Doner
2. Kaira Dow
3. Keala McElheny

**10-12 GIRLS LONGBOARD**

1. Pietra Santos
2. Chloe Colandrea
3. Cash Hoover

**13 GIRLS LONGBOARD**

1. Puaiiohi DeFries
2. Sheadyn Friel
3. Kili Tanaka

**10-12 BOYS LONGBOARD**

1. Hayden Jackson
2. Cruz Lemes
3. Cade Bernier

**13 BOYS LONGBOARD**

1. Jon Doner

**7-9 GIRLS SHORTBOARD**

1. Zoe Bradshaw
2. Emma Colandrea
3. Emma Falk

**10-12 GIRLS SHORTBOARD**

1. Skai Suitt
2. Kylie Oshiro-Kaneshiro
3. Kauanu Moleta

**13 GIRLS SHORTBOARD**

1. Chesney Guinotte
2. Haven Ingbinno-Francisco

**7-8 BOYS SHORTBOARD**

1. Rito Furuta
2. Kingston Palakiko
3. River Giles

**9-10 BOYS SHORTBOARD**

1. TJ Ingbinno-Francisco
2. Ryder Prouty
3. 'Aukai Tanaka

**11-12 BOYS SHORTBOARD**

1. Sunny Giles
2. Merrik Mochkatel
3. Kai Nelson

**13 BOYS SHORTBOARD**

1. Stone Suitt
2. Mala'e McElheny
3. Kaiano Costa



The Foster-Blomfield 'Ohana & The Friends of Ali'i Beach would like to Mahalo all of our extremely generous sponsors. With their valued support, as well as our volunteers and our amazing community We are able to make this event a success!

**Mahalo Nui**

Amazing Pickle Wax Remover  
Auntie Lolo's Cookies  
Banza! Bowls  
Better Homes and Gardens  
Billabong  
Blomfield 'Ohana  
Boardrider's  
Body Glove  
Breaker's  
BrooklynHawaii.com  
Bubble Gum  
Buell Wetsuits  
C & R Surfwear  
Café Hale'iwa  
Catch Surf  
Celestial Foods  
Charmaine's Moa Betta Cookies  
Cino Surfboards  
Clark Little Photography  
Climbworks Keana Farms  
Creatures of Leisure  
Da Fin  
Da Hui  
Dakine  
Dave Riddle  
Dennis Pang Surfboards  
Electric  
Empire  
FCS  
Fiberglass Hawaii  
Fine Woods Hawaii  
Foster-Blomfield 'Ohana  
FreeSurf  
Guava Shop  
Hale'iwa Joe's  
Hale'iwa Surf Shop  
Hawaiian Airlines  
Hawaiian Water Patrol

HE>i  
Hurley  
Island Fin Design  
J. Boards  
JohnJohn Florence  
Kaena Kai Clinic  
Ke Kula Kaiapuni O Hau'ula  
Kicker  
Kicks  
Kono's  
Kua'aina  
Lei Lei's  
Live Like Sion  
Local Motion  
Magic Island Production's  
Malama Market  
Manu O Ke Kai Canoe Club Girls  
Matsumoto's  
McDonald's  
MS Softtops  
Nalu Hawaiian Spirit  
Nixon  
North Shore News  
North Shore Surf Shop  
NS Air Conditioning  
NS Lifeguard Association  
O'Neill  
On a Mission  
Pa'akai Noa  
Pakaloha  
Patagonia  
Polynesian Treasures  
Pyzel  
Quiksilver  
Rag Surfboards  
Raging Isle  
Rash Wetsuits  
Reef

Restaurant 604  
Ripcurl  
Rockwell Productions  
Roxy  
Schaper Hawaii  
Scoop of Paradise  
Screentech  
Seamaids  
Sector 9  
Skull Candy  
Solarez  
Stermann Realty  
Sticky Bumps  
Suitt 'Ohana  
SunBum  
Surf Co. Hawaii  
Surf N Sea  
Surf News Network  
Surfer Magazine  
Team Real Estate  
Ted's Bakery  
Terry Ahue  
The Growing Keiki  
The Mission  
Third Stone  
Tim Carroll  
Tini Manini  
Town N Country  
Triad BodyBoards  
Uncle Bo's  
Vans  
Volcom  
VS  
Woolley Brothers  
WSL





# North Shore Wireless

Betty Depolito

## MALAMA PUPUKEA WAIMEA, NEW SIGNS, NEW RULES

The Pupukea Marine Life Conservation District is a protected area and has many prohibited activities. The goal is to protect the area and make sure the area species have a protected area in which to grow and reproduce. The non-profit has been doing a great job! It's a special area of the North Shore. Pay attention to the new signs which indicate the tide pools are now part of the protected district. They include a new map and other information. Some of the activities that are prohibited are no fish taking, no injuring any marine life or eggs and no possession of a device that may be used to take marine life. You can not take any sand, coral or alter any feature there. I am sure you get it. Be sure to take a look at the map with includes Waimea Bay. Earlier NOAA made laws prohibiting being near dolphins also. You have to be 50 feet away. Dolphins use the area for a resting site and no harassment is allowed. For a full list of rules and regs go to <http://dlnr.hawaii.gov/dar/marine-managed-areas/hawaii-marine-life-conservation-districts/oahu-pupukea/>. For a great movie about Sharks Cove Marine life by Marine biologist Terry Lilly link up here <https://www.youtube.com/watch?v=WktnqbNWL0c>

## STORM TAKES OUT THE FRONT SCAFFOLDING AT HALEIWA CHALLENGER SURF EVENT

We have had some stormy weather that has caused flooding around the islands. Kona storms or Kona Lows have been the culprits, but we do need the rain. Kona storms are seasonal in Hawaii from October through April. Classified as cold core cyclones they usually come from the south pulling up tropical rain. Lots of rain, snow, and wind for the islands. One hit during the Challenger Surfing event in Hawaii and blew down the front of the scaffolding during the night. No one was hurt, the contest continued the next day with the Women's Finals. In the weather the ladies endured the brown water and extreme conditions. Winning that contest was Haleiwa's own Bettylou Sakura Johnson and of course John John Florence took the mens.

Pipeline was different. There were excellent conditions for the one star qualifying event with John John Florence winning that also. In the wahine event the North Shore's Moana Jones killed it. Jones has built up her surfing at the Pipe enduring the heavy crowds that most of us avoid. Her time out in the break showed! Jones was superb in her ability

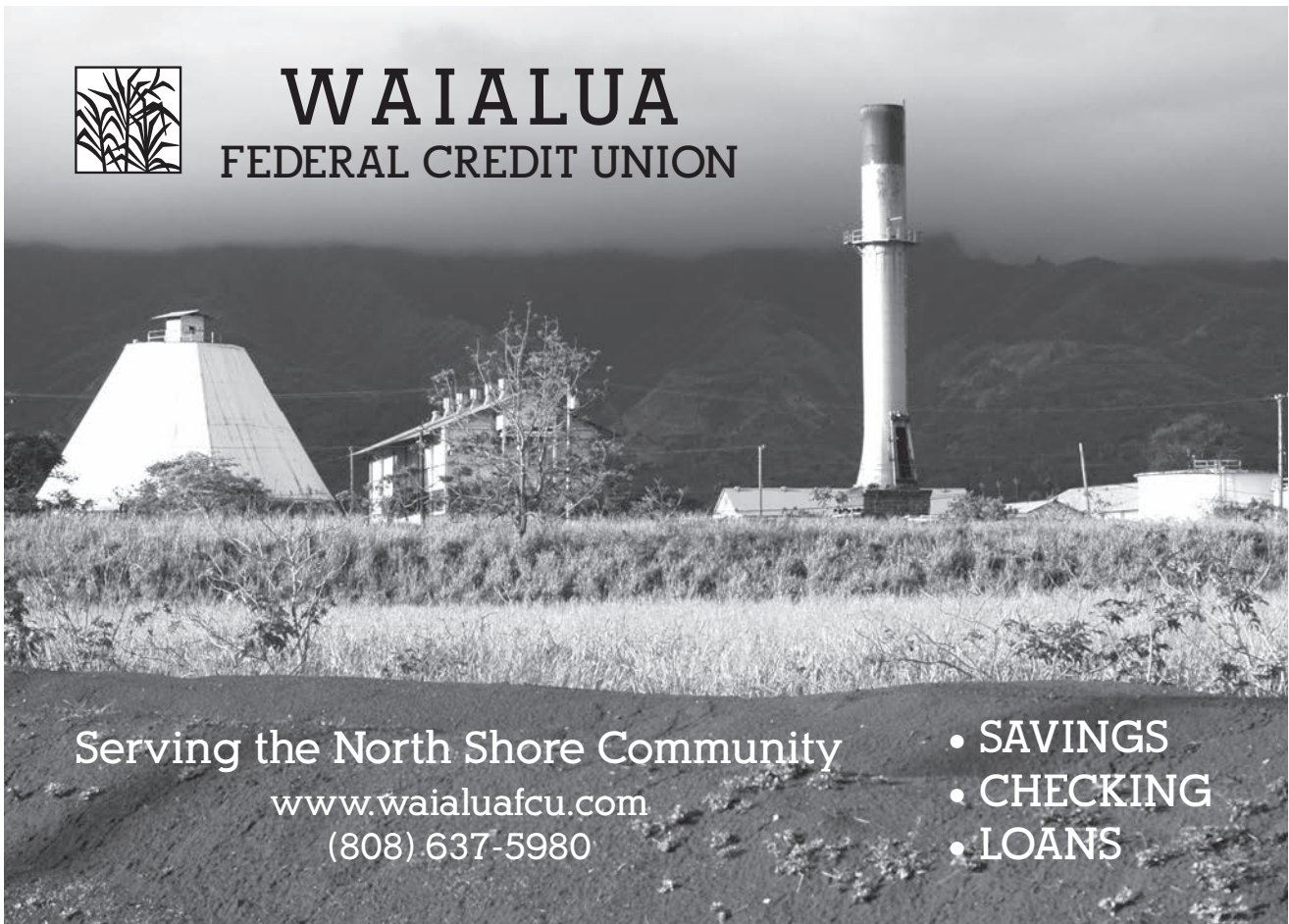
to pick the best waves and getting some tubes along the way. This could earn her a spot in the upper tear Challenger Series along the way. Big congrats! The next North Shore event is at Pipeline. This contest will be a WSL World Tour event with 42 men and 18 women battling it out for the start of the season.

## SURF PERMIT EQUALITY RULES IN THE WORKS

There have been a lot of complaints regarding women surfers not getting equal opportunity to have events in Hawaii. A new resolution and bill were introduced by the City Council that directs the City Parks Department to change the rules for more equality so that if not followed the applicant can not have a permit. There has been a number of women behind requests to follow Federal Discrimination Laws but they have been ignored by some permit holders. There are companies that support women surfers like Vans and Red Bull. Both are conducting equal opportunity events with support for both men and women through their companies. Some other companies don't see the value and are ignoring Federal Laws. The ISA, (International Surfing Association) who is the main organizer for the Olympics, sees the value in women's surfing and has been conducting events in an equal format, the Olympics requires it. Hawaii should look at and look forward to more involvement for our surfers in the Olympics but the qualification is skewed. Few events here means our surfers can not qualify. Many of our Hawaii surfers changed countries so they could try and qualify. More work needs to be done. The city is conducting meetings to come up with new rules. Meetings are coming up and the community will be invited to testify. I have been heavily in favor of total equality in the events here, not 90 men and 34 Women in a contest, no way, 90 to 90! Some against say "there are more men in the organization and they surf better, we go by percentages." Sounds reasonable? That is not how our laws are. Build it, they will come. Women have the events so they can become better, be pro and have a chance to qualify. Write letters to your city council rep and we will get things sorted out. I will post when it's time to chime in at <https://www.facebook.com/search/top?q=hawaii%20women%27s%20sports%20agency>, on Facebook and instagram, banzaibetty. Or you can find all the information on the City and County Parks website.



# WAIALUA FEDERAL CREDIT UNION



Serving the North Shore Community

[www.waiialuafcu.com](http://www.waiialuafcu.com)  
(808) 637-5980

- SAVINGS
- CHECKING
- LOANS

# NOW HIRING!

**RETAIL, CULTURAL, BOTANICAL,  
& CONSERVATION DEPARTMENTS**



**EMAIL RESUME & APPLICATION  
TO [COSHIRO@WAIMEAVALLEY.NET](mailto:COSHIRO@WAIMEAVALLEY.NET)**

**(808) 638-7766**

**WAIMEAVALLEY.NET**

# BULLETIN BOARD



Featuring the largest selection of certified organic produce on the North Shore.  
 No panic...ours is organic.  
 Open 7 days.  
 Mon.-Sat. 9am-7pm.  
 Sun. 9am-5pm

66-445 Kam. Hwy  
 Haleiwa, Hawaii 96712  
 Next to the Post Office  
 808-637-6729 • 808-637-1922 fax

## LTC

### Laie Trucking Company, LTD

\* Ready Mix Concrete \* Recycled Aggregates  
 \* Pump Service \* Hauling \* Equipment Rental

PH: (808) 293-8710      PH: (808) 293-1296  
 P.O Box 121      FAX: (808) 293-2890  
 Hau'ula, HI 96717      laietrucking@hawaiiantel.net

"A LOCAL COMPANY, BUILDING A LOCAL COMMUNITY"

## N-C PLUMBING & SUPPLY

Cont. Lic. No. C-8913



- RESIDENTIAL & COMMERCIAL SALES & SERVICE
- CONTRACTING & DESIGN • HOME PLUMBING SERVICE
- PLUMBING FIXTURES, HEATERS • FREE ESTIMATES

Nestor P. Calilao (Owner)      Bus: 637-8662  
 P.O. Box 769      Res: 638-5157  
 Waialua, HI 96791      Cellular: 372-8718

## ALPHA ELITE FITNESS

12 Week Transformation Boot Camp  
 Hale'iwa Beach Park  
 M/Tu/W/F 8:30am

Coach Sam  
 Call/Text: 808-861-9494  
 IG: @samcamxo  
 www.iamalphaelite.com



*vanessa li style*  
 north shore, oahu  
 private salon studio  
 (808)953-8221



www.vanessalistyle.com  
 vanessalistyle@gmail.com



## RESIDENTIAL AND COMMERCIAL PLUMBING

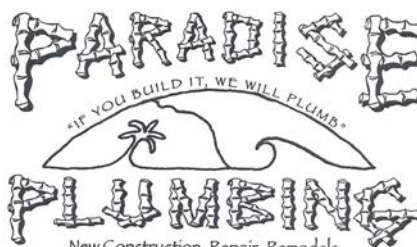
License #C-24500  
 35 yrs experience  
**808-256-7337**  
 www.andrestheplumber.com  
 email: andresplumbing@hotmail.com

## Munden Design & Build

Lic.#BC19632

Design • Plans • Permits • Construction  
 Additions & New Residences  
**808 391-8616**

*Providing quality work since 1978*



Dale Christensen    C-29856    (808) 368-1473



## Greekz Plumbing

License# C-32939  
**Phone 372-1820**



KATHI LEE ALBIAR  
 OWNER/BROKER - RB 17327

808-358-4139  
[KATHI@ALBIARREALTY.COM](mailto:KATHI@ALBIARREALTY.COM)  
[WWW.ALBIARREALTY.COM](http://WWW.ALBIARREALTY.COM)

SALES & PROPERTY MANAGEMENT SINCE 1993

# News from Lā'ie and Kahuku by Line-Noue Memea Kruse

## 2021 OIA Girls Volleyball Champions

Kahuku High and Intermediate School volleyball program battled hard all 2021 season to earn the title of 2021 OIA girls volleyball champions. Former Kahuku All-State 2002 Player of the Year and Division I collegiate volleyball athlete, Head Coach Tuli Peters Tevaga knows a thing or two about the game as well as collegiate competition in the sport of volleyball. Coach Tuli alongside of her dedicated assistant coaches Shai Magalei, Musie Lauhingoa, and Tia Thompson selected the 2021 theme of "We are Kahuku" to lead the season with pride, determination, grit, and pure heart. Senior

Natali Keni credited her coaches that "pushed us and my teammates" the coaches and teammates "were so supportive of each other." Senior co-captains Emmalei Mapu and Shace Niu not only were fierce athletes on the court but they are honor roll scholars. Co-Captain, Player of the Year OIA Eastern Division, and HHSAA Division I All Tournament Team Emmalei Mapu in addition to watching film, waking up early to attend seminary, and rehab after every practice she has "been in my school's SBG throughout my whole high school career and also been an honor roll student as well." She believes

"with these things, it has helped me to learn and fill leadership roles, volunteer to help those around me & also be available to represent myself, my name, and my community everywhere I go in a good way." Mapu is committed to Western Nebraska. The Lady Raiders echo the same commitment to cultivating close relationships with each other that helped in clutch times. Junior setter, Bella Akanoa worked hard to give her teammates the right sets and hittable balls. Akanoa never competed at this level before "it is different competition from my Jammers Volleyball Club" she gained confidence and maintained a positive attitude. The Lady Raiders are fortunate to have senior student-athletes to example the "We are Kahuku" through intensive practices and mental focus which Keni shares, "volleyball is 1% skill and 99% heart and mindset." Seniors Makayla Vaomu, Amia Silva, Anastaysha Mioi, Emmalei Mapu, Natali Keni, and Shace Niu led their team with pride and pure heart.





The Happiest Place on the North Shore  
**Waialua UCC FARMERS MARKET**  
 67-174 Farrington Hwy  
 Tuesdays 3-7pm  
 farms-food-music-local artisans family fun

Proudly Partnering with the North Shore Food Bank  
 Learn More: [waialuaucc.org](http://waialuaucc.org)



**Congratulations 2021 Kahuku High School Football Champs!**



**2021 Operation:  
 Toy Box &  
 Christmas Cheer**

Christmas cheer fills hearts and keiki toy bags!  
 Mahalo from North Shore News and NS Food Bank to the North Shore community for blessing this event year after year.  
 "You are loved and appreciated"



# MULTI-MARKET 2022

CRAFT FAIR • FARMER'S MARKET • SWAP MEET

Enjoy *pony rides (no reservation required)*, bouncy houses, a power wheels track, and game tents! Grab a partner and sign up for our Portagee Horse Shoe Tournament, or solo 'Ulu Maika Tournament. Limited slots available. Don't forget to stay after the fair for our open mic night and *special guest performance!*

**CRAFT FAIR IS FREE TO ENTER**

Live Music Entry Fee: \$10 after 3pm

Portagee Horse Shoe Entry: \$40 per team

'Ulu Maika Entry: \$20 per person

**ITINERARY:**

MULTI-MARKET	10 AM - 3 PM
PORTAGEE HORSE SHOE	10 AM START
ULU MAIKA	12 PM START
OPEN MIC	3 PM - 5:30 PM
GUEST PERFORMANCE	6 - 9 PM

Call, email, or go to [northshorestables.com/book-online](http://northshorestables.com/book-online) to reserve a vendor stall or sign up for tournaments. Stalls are \$40.

**FEBURARY 5, 2022 • 10AM - 9PM**

67-221 Waialua Beach Rd. (808) 270 5032 [info@northshorestables.com](mailto:info@northshorestables.com) [northshorestables.com](http://northshorestables.com)



# CLASSIFIEDS

The North Shore News is published every other Wednesday and mailed free of charge to all North Shore homes and businesses.

**PRESS RELEASE POLICY:** Submit press releases, mail or email to Editor, North Shore News, P.O. Box 117, Haleiwa, HI 96712. Please type your releases and keep them shorter than 200 words unless they are of an unusual news interest. Releases should be viable news stories and are published on a **space available basis only**, with priority given to those received first. You may attach photos. We are not responsible for the return of any photos. All materials are submitted at owner's risk. We reserve the right to edit and/or refuse all submissions including advertising.

**EDITORIAL POLICY:** We welcome articles and letters from our readers. Letters to the Editor are published on a space available basis only and preference is given to shortness of length, and quality of content. We prefer to run not more than one letter, per person, per 6 month period. Letters subject to edit.

Views expressed by our contributing writers and advertisers do not necessarily reflect the view of the management and staff of the North Shore News. All rights reserved. Reproduction in whole or part without permission is prohibited. © 2022.

**Editor & Classifieds**

Linda Seyler

**Typography**

Downtown General Store

**Contributing Writers**

Betty Depolito

State Representative Lauren Matsumoto

Senator Gil Riviere

Councilmember Heidi Tsuneyoshi

Richard Sterman

**Photography**

Banzai Productions

Bill Romerhaus

North Shore Photography



Please recycle this newspaper.

**SERVICES**

**SHORE ELECTRICAL SERVICE**

New Const-Remodels  
638-0049/Lic#C20777

**Andres Plumbing**

All your plumbing needs  
808-256-7337 Lic#C24500

**Sunrise Asphalt Services, LLC**

For all your driveway, pothole and parking lot needs.  
Licensed and Insured.  
Lic# 37527  
(808)754-9928  
Sunriseasphaltservices.com

**BEE HIVE**

\$250.00/ 10 FRAME BEE HIVE  
"LONGSTROTH,  
WILL PROVIDE ASSISTANCE  
MASTER BEEKEEPER  
682-1955.

**LAWN AND YARD MAINTENANCE**

M&M Property Consultants  
LICENSED AND INSURED  
Free Estimates  
Call or text (808) 731-0933

**CS EuroCars Kapolei Mercedes Repair Shop**

with low labor rates  
ASE Certified Technician  
27 years experience  
2116 Lauwiliwili St. Unit 104F  
Kapolei, HI 96707 - Under New mgmt.  
808-682-1957

**DOG/CAT NAIL TRIMMING**

At your home- only \$20.  
Call 808-388-5336

IG: @nsnews\_haleiwa

**Covid Testing**

BYU Hawaii-Laie  
55-220 Kulanui St  
Mon-Fri 7am-2pm  
Sat 9am-12pm

**GERMAN CAR SERVICE**

Professional-Qualified  
Technician  
Call Gary  
637-6800

**HARVEY'S TOWING LLC**

24 hr Towing Service  
Lockouts, Jumpstarts &  
Recovery. Specializing in  
opening locked car doors.  
Call anytime 478-0333

**ESTRADA'S WE HAUL 'EM**

Garbage-Rubbish-Trash  
Call Rick 808-216-9419

**ALOHA COMPUTER**

PC/MAC Repair/Virus  
Removal  
MOBILE COMPUTER  
REPAIR SERVICE  
**372-2667**

**Tile Installation**

Lope Fuentes Lic #31228  
**808-276-2257**  
fuentesstoneandtile.com

**CC SALVAGE**

No job too small,  
we haul it all!  
Island Wide Services  
24/7/365  
Wanted Junk Car  
**808-457-2103**

**NORTH SHORE NOTARY PUBLIC**

Mobile Service  
Call/Text Nicolas  
808-304-6900

**HOT YOGA NORTH SHORE**

**MONTHLY INTRO SPECIAL!**

**\$99**

www.hotyoganorthshore.com

- Rain Gutter Clean Out
- Pressure/Scrubbing
- Window Cleaning
- Auto Detailing

Ku's Aloha Cleaning  
341-1656

**Hawaii Tree Co.**

Trimming & Removal  
Professional-Reliable  
Free Estimates  
808-462-2749

**HONEY BEE HIVE SWARM**

Removal & Relocation  
808-724-9966

**NORTH SHORE AUTO & TRUCK SERVICE**

808-637-1234

**BUSINESS SERVICES CENTER**

Fast & Convenient Copy, Fax, Scan,  
Computer/Internet, Laminate, & More



Across from  
the Haleiwa  
Post Office

637-4558 • gonorthshore.org

#gonorthshore

**HOW TO CONTACT THE NORTH SHORE NEWS**

Letters to the Editor, and other items submitted for publication consideration may be sent to us via:

MAIL: P.O. Box 117, Hale'iwa, HI 96712

E-MAIL: NSNHaleiwa@gmail.com

NSN4Linda@gmail.com

PHONE: (808) 780-8037

www.northshorenews.com

# CLASSIFIED ADS

**Next Issue - Feb. 9, 2022**  
**Deadline Date - Jan. 28, 2021**

Would you like to receive the North Shore News via email in color!  
 Just send us a message at:  
 NSNHaleiwa@gmail.com

**OFF da ISLAND**  
 Are you leaving Oahu on vacation or business? Do you live on a neighbor island, the mainland or foreign country and subscribe to the North Shore News? Send us a photo of someone in front of a sign or landmark holding a copy of the NSN. Email your photo along with the person or persons' name, community of residence, contact info and photo location to: NSNHaleiwa@gmail.com.

**Classified Ad Rates**  
 3 lines (min.) \$18.89  
 4 lines \$25.13  
 5 lines \$32.45  
 1" Box Ad \$41.88  
 (27 characters in each line)  
 Include your contact information.  
*\*Ads can be text, or emailed.*  
 We reserve the right to refuse any advertisement with a full refund.  
 (808) 780-8037 • NSNHaleiwa@gmail.com

**FREE ADS**  
 Garage & Yard Sales, Reunions, Lost & Found.  
 Email ad to:  
 NSNHaleiwa@gmail.com



**Marianne Abrigo, Properties**  
 Specializing in - North Shore Real Estate  
 Ask for our list of available properties and/or a free market analysis.  
**Marianne M. Abrigo**  
 "Realtor since 1974"  
 Office 637-3511  
 Fax 637-0777  
 Email mabrigo22@aol.com

## HELP WANTED

**Household Help**  
 Beachfront Estate  
 16 hours per week  
 808-637-0808

Pet care professional with grooming experience to care for poodles on NS, Pupukea. Competitive compensation based on experience. References required 638-7073



**McDonald's is Hiring at Haleiwa and Laie**  
 Competitive Hiring Wage with Flexible Hours  
 College Tuition Assistance (\$2500 annually)  
 Pay for Grades (HS and College Students)  
 Free Food & Uniforms and More Benefits Available!  
 It's EASY to apply:  
 You can Text 38000 'HI127' to apply at Haleiwa or 'HI126' to apply at Laie  
 Or go online at <https://careers.mcdonalds.com/main/>  
 Restaurant Jobs > type Haleiwa HI or Laie HI in the search box

**GIOVANNI'S SHRIMP TRUCK NOW HIRING!**  
 Starting pay \$15 an hour plus benefits.  
 Call 293-1839 or apply at the Kahuku location  
 56-505 Kam Hwy, Kahuku

**MATSUMOTO SHAVE ICE**  
 Now Hiring!  
 Apply in person daily 9am-4pm  
 808-637-4827

North Shore Chamber of Commerce is looking for volunteers to help with our Visitor Center sales and services. 3 hour shifts, Monday through Friday are available. Come be part of our team, helping the North Shore be a better place to live, work, and play!

**Retail Sales Associate**  
 Polynesian Treasures North Shore Marketplace  
*Now Hiring for PT/FT sales position. Previous retail and management or leadership experience a big plus!*  
 Competitive wage plus commission and bonus.  
 email resume to polynesiantreasures@hawaii.rr.com

**Happy 2022!**

## MISCELLANEOUS

In a world where you can shop anywhere...  
**SHOP LOCAL**

**High School Seniors can apply now for HMSA's Kaimana Scholarship Program**  
 To apply, visit <https://hmsa.com/kaimana>  
 All applications must be received by Friday, Feb. 25, 2022.

**Hawai'i Statewide Marine Animal Stranding, Entanglement, and Reporting Hotline**  
*Includes stranded/injured sea turtles, monk seals, dolphins, and whales.*  
**Phone: (888) 256-9840**

**North Shore Serenity Al-Anon Family Group** meets 6:30pm Wednesdays via Zoom.  
 Zoom# 84783266578  
 Password 809980  
 Open to anyone who believes his or her life may have been affected by someone else's drinking.  
 Additional info:  
<https://www.al-anonhawaii.org/>  
 808-546-5647

**KQNS 107.3 FM Christian Radio**  
 Inspirational, Health, Music, Addictions, Marriage, Prophecy, Stories, etc..

**Sunset Beach Christian Church Food Bank**  
 Every Tuesday  
 12 - 2pm

**NORTH SHORE FOOD BANK**  
 Distribution Update at Kaiaka Bay Beach Park  
 Starts 12 noon  
 Wed., January 19  
 Wed., February 2  
 Wed., February 16  
 For information or to donate contact:  
 Linda (808) 780-8037

**He dared to have a dream... January 17th Holiday Honors Civil Rights Leader Dr. Martin Luther King, Jr.**  
 Dr. King's main goal was equal civil rights for all races and social groups; a message needed in Hawai'i today. Even in the "aloha state" cries of prejudice call out at times regarding housing, employment, and social opportunities.  
 One person's contribution to better a society and community can make a difference. You and I can make a difference, if we'll only try. Take this time to be thankful that one courageous man like Dr. Martin Luther King dared to do what he dreamed.

North Shore Food Bank  
 IG @nsfoodbank

**The Marine Debris Rapid Response Hotline**  
 833-4-Da-Nets (833-432-6387)  
 To Report Derelict Fishing Gear



**Healthy patients from the inside**  
*Outpatient Services*

**Cardiopulmonary**

- Echocardiogram (ECHO)
  - Electrocardiogram (EKG)
  - Electroencephalogram (EEG)
  - Pulmonary Function Test
  - Treadmill Stress Test
  - Holter Monitor
- All services are available on one floor.*



**Diagnostic Imaging**

- Bone Density (DEXA Scan)
  - Computed Tomography (CT)
  - Mammography (3D offered)
  - Nuclear Medicine
  - Ultrasound
  - X-Ray
- Walk ins are available for some procedures.*



**Laboratory**

- General laboratory
  - Phlebotomy services
  - Transfusion services
- Walk ins are welcome.*

**Rehabilitation**

- Physical Therapy (Orthopedic, Neurology, Balance/Vestibular, Sports)
  - Occupation Therapy (ADLs, Hand)
  - Speech Therapy (VitalStim, Modified Barium Swallow Study)
- Come visit us in our new & expanded clinic.*



For your safety and the safety of others, Wahiawa General Hospital has implemented CDC safety recommendations which includes screening questions and temperature checks upon entering, face mask, social distancing, and proper cleaning techniques after every use to name a few.

128 Lehua Street Wahiawa, HI 96786 | (808) 621 - 8411 | [www.wahiawageneral.org](http://www.wahiawageneral.org)