



"E Ala Na Moku Kai Liloloa"

In This Issue:

City Seeks Input on Flooding, Streams
Page 6

New Kuilima Farm Stand Opens
Page 11

Through Tourists' Eyes
Page 16



Photo: B. Ritchie

NORTH SHORE NEWS June 30, 2021 VOLUME 38, NUMBER 6



Anahulu "Rainbow" Bridge celebrates 100th birthday Photo: banzaibetty.com

The Celebration Continues in Hale'iwa

On Friday, June 18, 2021 our historic Hale'iwa landmarks the Anahulu "Rainbow" Bridge and the Surf N Sea building were blessed and honored as we celebrated their 100th year birthdays.

The celebration of about 75 invited guests mainly with generational connections to the bridge and Surf N Sea began at Haleiwa

Joe's. Hawaiian music and a traditional blessing were followed by remembrances and proclamations presented to the North Shore Chamber of Commerce by our state and local officials.

Guests then strolled to the makai side of the bridge for photos. Imagine people viewing this photograph when the next centennial

celebration of the bridge takes place in 2121.

A short walk to the Surf N Sea building followed with a reception on the lanai where guests enjoyed Joe Green's music and a champagne toast to the next 100 years!

Many thanks to Roxana Jimenez and all the volunteers for a beautiful event. The celebration of these iconic landmarks will continue through the end of the year. Please visit www.anahulubridge100.com for information. See celebration pictures on pages 12 and 13.

PRSRT STD ECRWSS U.S. POSTAGE PAID HONOLULU, HI PERMIT NO. 1479	*****ECRWSSEDDM***** RESIDENTIAL CUSTOMER
--	--



OFF da Island in Orlando, Florida

The Bohnet family from Kahuku enjoying their vacation at Disney World the "Happiest Place on Earth!" For information on the OFF da Island campaign turn to page 23.

NOTICE

Would you like to get vaccinated but do not have an i.d.? Come to the North Shore Food Bank on Wednesday, July 7th, 9am - 1130am. The H.O.M.E. Project will vaccinate without i.d.

Remembering

Jeri Mitsuko Cabrerros Tugman
of Kahuku, Hawaii passed away
February 11, 2021. Services for
Jeri will be a drive thru Waialua
Shopping Center, Sunday, July 25, 2021
10:00am to 2:00pm
The family requests no flowers.

NORTH SHORE FOOD BANK

IG: @nsfoodbank

Sponsors: Hawaii Food Bank
& Aloha Harvest

DISTRIBUTION UPDATE

at Kaiaka Bay Beach Park

*Wednesday, July 7, 12 noon
w/North Shore Service Center,
Yes Project, p/u Senior boxes*

Wednesday, July 21, 12 noon

Wednesday, August 4, 12 noon

Wednesday, August 18, 12 noon

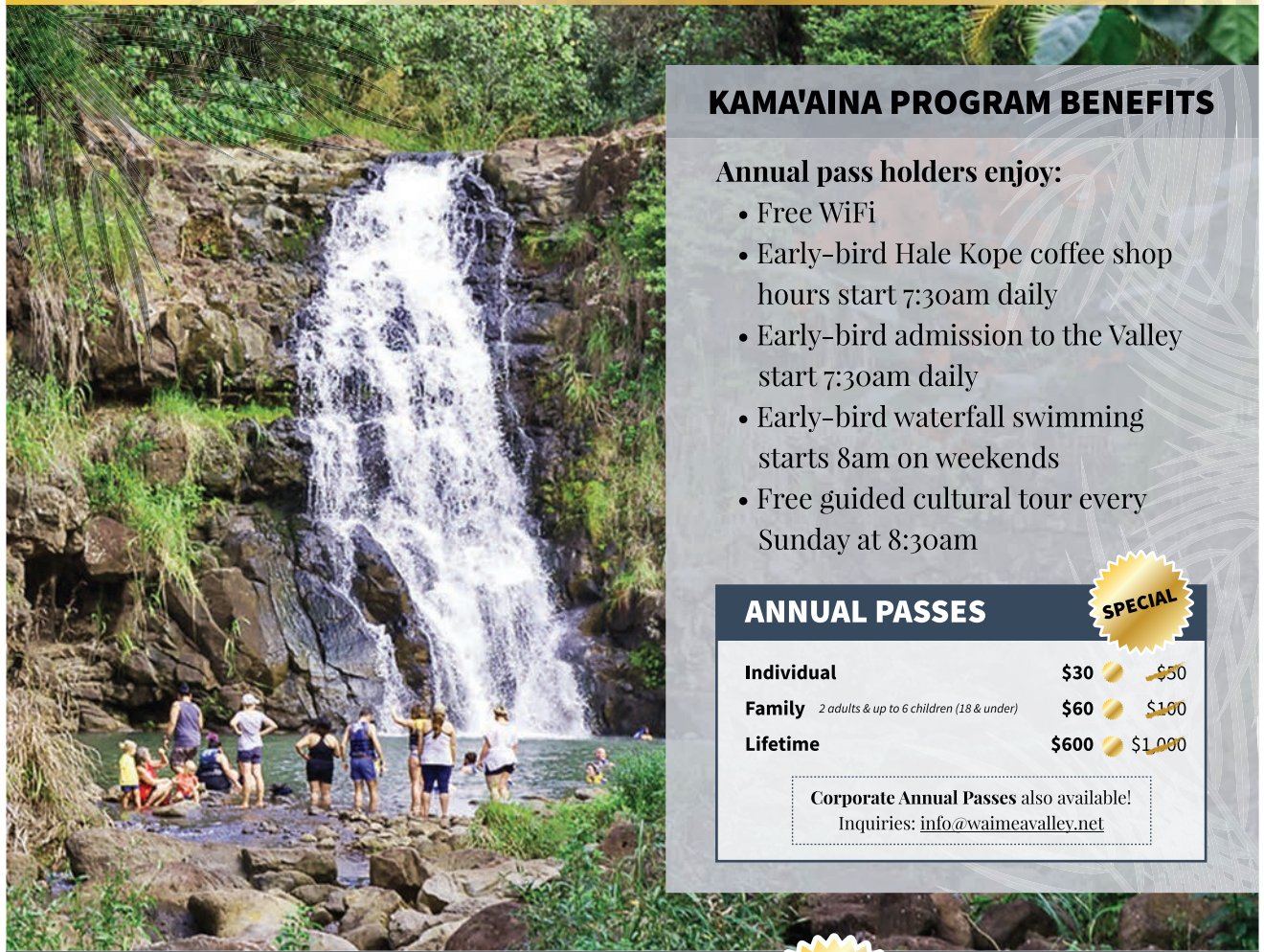


For more information and
donations contact :
Linda (808) 780-8037



WAIMEA VALLEY IS OPEN!

NEW KAMA'AINA PROGRAM Exclusively for Annual Pass Holders



KAMA'AINA PROGRAM BENEFITS

Annual pass holders enjoy:

- Free WiFi
- Early-bird Hale Kope coffee shop hours start 7:30am daily
- Early-bird admission to the Valley start 7:30am daily
- Early-bird waterfall swimming starts 8am on weekends
- Free guided cultural tour every Sunday at 8:30am

ANNUAL PASSES



Individual	\$30	\$50
Family <small>2 adults & up to 6 children (18 & under)</small>	\$60	\$100
Lifetime	\$600	\$1,000

Corporate Annual Passes also available!
Inquiries: info@waimeavalley.net



Monday - Sunday, 9am - 5pm
Extended summer hours through Labor Day!

Call: (808) 638-7766

@waimeavalley  

@waimeavalleyoahu 



WAIMEA VALLEY
HI'IPAKA LLC

WHERE HAWAI'I COMES ALIVE

WAIMEAVALLEY.NET




FARMLOVERS

We're Back!

Hale'iwa Farmers Market

— at Waimea Valley —


Thursdays 2-6pm

local farms food art

local organic produce • vegan cheeses • bagels and challah
 juices • smoothies • gluten-free breads • tamales • pasta
 burgers • pizza • dim sum • local artisans & more!

Find us on instagram: @alohafarmlovers





MRS. EDNA LEIALOHA GILMAN (LEI) STEWART

Mrs. Edna Leialoha (Lei) Stewart, age 89 passed away at her home in Milton on June 3, 2021. Lei was born on Feb. 9, 1932, in Waialua , Hawaii. Lei was a professional Hula dancer, having gone on several USO tours in the 1950's with Hilo Hattie's Group. She was also a dancer at the Sands Club in Waikiki and was also a Stewardess for Aloha Airlines. When healthy, Lei was active in many bowling leagues in the area.

She is survived by her husband, of 54 years, James P. (Jimmy) Stewart, son Shay Johnson of Haleiwa, Hawaii, brother Douglas N. Gilman, Sr. of Hawaii, brother-in-law Clayton L. (Marilyn) Stewart of Pensacola, sister-in-law Betty Jane (Alan) Pounsett of Ontario, two grandchildren, four great grandchildren and many nieces and nephews.

She was also preceded in death by a daughter, Makamae.

Memorial Services over the ashes were held at the Trahan Funeral Home Chapel on Tuesday, June 15, 2021, at 2:00 p.m. Rev. Fred Rogers and Rev. Robert Hornick officiating. Graveside Services will be held at the National Memorial Cemetery of the Pacific in Honolulu on Tuesday, July 13, at 1:00 p.m. Nuuanu Memorial Park Mortuary is handling local arrangements.

Hale'iwa Farmers Market

Farmers Markets are a gathering place where the island's local food production is distributed to the people who count on each local delicious harvest. Hale'iwa Farmers Market has been serving the community since 2009. Known for its atmosphere of community and for showcasing authentic local products, farms and artisans, you'll find HFM every Thursday from 2-6pm at Waimea Valley.

Hale'iwa Farmers Market's North Shore farmers bring the freshest local produce including everything from tomatoes, oyster mushrooms, organic baby greens, eggplant, papayas, apple bananas, sweet potatoes, mangoes, melons and more! Local farms include Fields of Aloha, Pupule Wahine, Beasley Farm, Hinshaw Farms and Wicked HI honey.

Our curated selection of local food vendors bring you amazing food with local ingredients. Enjoy a Hawaiian honey slushie, locally-sourced poke, artisan vegan cheeses, a local grass-fed beef burger, dim sum and more on the beautiful Waimea Valley lawn.

Finally, the finest artisans bring you a wide array of local products including Hawaii photography, jewelry, handblown glass and textiles made with aloha.

Supporting local businesses is a great way to make a positive grassroots impact. Money spent at the farmers market stays in our community and is more likely to be spent nearby, supporting local families and businesses instead of lining the pockets of large corporations. Use your dollar to make a change.



Aloha,

The neighborhood board system plays an extremely important role in ensuring communities throughout the island are kept up to date with important projects and issues that directly or indirectly affect residents. The Special Management Area (SMA) is generally located on land extending inland from the shoreline. In order to preserve the shoreline, development in the SMA follow more stringent guidelines. In order to ensure more scrutiny of these projects, I introduced Bill 27 (2021) with Councilmember Esther Kia’aina to require that SMA permit applicants make a presentation of their project to the applicable neighborhood board before submitting their application. The condition existed until 2020, when the Department of Planning and Permitting removed it because there were no statutes or ordinances upholding the requirement. The loss of the pre-application presentation would have been very detrimental, especially for our Council District 2 communities as a majority of the district exists along the shoreline. With passage of this bill, we will ensure that residents will be kept informed on matters affecting the precious coastline.

Following the heavy flooding in March of this year, I introduced Resolution 21-77, which requested the Department of Facility Maintenance to develop a stream maintenance schedule, as well as, appropriated \$5 million in funding for a streams and drainageways maintenance program. The resolution was adopted in May and the department posted its 2019-2024 stream maintenance plan which can be found at <https://bit.ly/3wNY7ur>.

In last month’s North Shore News, I reported on Resolution 21-112, which urged the Mayor to create a new and separate Department of Ocean Safety to allow for more autonomy for our lifeguards. The resolution was adopted in early June and I am very thankful to Mayor Rick Blangiardi and Honolulu Emergency Services Department Director Dr. James Ireland for their consideration and the great discussion that was generated throughout the process of adopting the resolution. I am also happy to report that we were able to include Ocean Safety budget items to help enhance services at various beach parks in the North Shore. We put funding in for various equipment to support Haleiwa Ali’i Beach Park, Haleiwa Beach Park, Waimea Bay Beach Park, Chun’s Reef Beach, Ehukai Beach Park and Sunset Beach Park including PA systems, a jet ski with trailer, and storage containers. Additionally, I included funding for new lifeguard towers at Pupukea, Kokololio and Haleiwa Beach Parks to give our Ocean Safety personnel a central location where they can monitor and protect these busy beaches. I

also included an appropriation to develop a dedicated access lane for emergency services and first responders into Waimea Bay Beach Park. As we all know, there are a high volume of visitors to Waimea Bay Beach Park daily and access becomes difficult. In the event of an emergency, first responders have a difficult time getting into the park, delaying what should be a fast response. With an access lane, we can hopefully reduce response times resulting in more effective emergency responses and rescues.

Mahalo everyone for your continued support. If you ever have to contact our office please do not hesitate to contact my office at 768-5002 or by email at htsuneyoshi@honolulu.gov.

WORKSHOP

The North Shore's First Coworking Space

10+ Desks available daily, weekly, monthly at the Waiialua Sugar Mill

More info <https://hawaiiwork.shop> or (808) 339-3099

PKB
"Da Best"

SUMMER IS HERE!
Perfect time for a cool Snow Puffy!

Hoping for a relaxing and mask-free summer!

PKB OPEN 7 DAYS
New Hours 6am - 6pm

Home of the Snow Puffy and Sada's Malassada

Oh and don't forget the Cinnamon Finger Puff Available only on Tuesdays, Wednesdays, and Thursdays

www.pkbsweets.com

City Seeks Input on Flooding, Streams

Two surveys are open until mid July to collect public input on O'ahu storm water management as the City & County of Honolulu (City) develops a Storm Water Master Plan. Residents can mark the locations of local storm water concerns like flooding and stream maintainance using a simple mapping tool and weigh in on priorities such as water quality, flood prevention, and infrastructure needs.

In May and early June this year, the City held virtual meetings to solicit community feedback on crafting a comprehensive Storm Water Master Plan that aims to guide management, programs and investments over the next 50+ years. Over 115 residents participated.

For those who were unable to participate in the meetings, the two online surveys will be open until July 16. The surveys can be accessed via the website: bit.ly/StormWaterPlanning. A paper copy of the survey can be requested by calling 768-3220. Survey respondents can also receive a coupon reward, while supplies last. "More community feedback will provide important details and we urge all interested to participate," said Randall Wakumoto, Program Administrator under the Department of Facility Maintenance (DFM) Storm Water Quality Division (SWQ). "This is the final chance for people to provide input before we start drafting the City's Storm Water Strategic Plan."

The plan, being developed through the Department of Facility Maintenance, Storm Water Quality Division, is intended to provide a framework for management of O'ahu's system of streams, ditches, pipes, beach mouths,

and other storm water facilities. Residents who attended last year's meetings introducing a storm water utility study consistently expressed interest in seeing an overall vision for storm water management. This community feedback was instrumental in leading the City to begin developing the plan.

Preliminary feedback from the community meetings showed that water quality was of highest priority. Other concerns included flood prevention and public safety, addressing infrastructure needs, developing a strategy to manage watersheds, climate resilience, and accountability and transparency.

"We hope more local residents will participate in providing feedback for the Storm Water Master Planning process," said Roger Babcock, Jr., P.E., Ph.D., Director and Chief Engineer of DFM. "Storm water management is one of the most important problems facing our island today, and crafting a plan that incorporates the needs of all O'ahu stakeholders is a great priority."

For more information on the City's long term storm water master planning, and to sign up for email updates, please visit: bit.ly/StormWaterPlanning.

About DFM – Storm Water Quality Division

The mission of the Storm Water Quality Division is to empower and provide guidance on effective ways to minimize our impact on water quality in order to protect public health and the beauty of O'ahu. For more information about the Storm Water Quality Division and upcoming volunteer opportunities, please visit www.cleanwaterhonolulu.com.

Enjoy Special Hours in the Valley Exclusive for Kama'aina

It seems like only yesterday we were asking for support from our kama'aina to help keep Waimea Valley open during the pandemic that hit us like many other businesses throughout the world. We received so much love and aloha from everyone throughout the island from donations to families and individuals purchasing annual passes while we were still closed due to COVID-19. Today, we are happy to report that Waimea Valley is open and thanks to many of you and the visitors we are thriving!

With summer is in full swing and we want you to know we appreciate our kama'aina visitors. We have created a special program just for you. The Kama'aina Program consists of added benefits to our annual pass program. If you are a current or wish to become a pass holder the annual membership is still on sale at \$30 for an individual pass, \$60 for a family pass (2 adults and up to 6 children 18 years old or younger), or a lifetime pass for \$600. The pass gets you 10% off the gift shop and Wahi 'Aina snack shop on every visit and now special hours and activities. Added pass holder benefits include:

- Early morning walking: come into Waimea Valley at 7:30 am before business hours to enjoy the tranquility of the Valley
- Waterfall swimming opens at 8 am on Saturday and Sunday only
- The opening of the Hale Kope coffee shop in the Visitor Center offering baked goods, fresh fruit, Waimea blend coffee and more of your favorite coffee drinks. There is also free WiFi in the Valley. Start your work day here!
- Cultural Tours at 8:30 am on Sundays only

To enjoy these benefits pass holders must purchase or currently have an annual pass, complete a morning walker application and present their pass to staff upon entry at the ticket booth every visit. To purchase an annual pass visit the Ku 'Ono Wai Wai Gift Shop located in the Visitor Center open 7 days a week starting May 31st 2021 from 9 am to 5 pm. Be sure to present staff with a valid Hawaii ID to qualify for the pass.

Spread the word! We look forward in seeing you all back in the Valley. Mahalo nui lua for supporting Waimea Valley. A hui hou.



**Senator
Gil Riviere**
**Serving Oahu's North and
Windward Shores**

Highway Resurfacing and Airfield Updates

It may finally happen. Resurfacing of the roadway from the end of the H2 Freeway to Weed Junction in Haleiwa is set to begin in July. The horrendous potholes on Wilikina Drive near Schofield Barracks will finally become just a bad memory rather than a bone jarring experience.

This long overdue project was scheduled to be completed last year, but it got tied up in contract bid challenges. Hawaii procurement laws are complicated, particularly when three competing bidders challenge a contract awarded to another company.

Wilikina Dr, Kamananui Rd, and Kamehameha Hwy from Wahiawa to Weed Junction should be as good as new in the near future. A resurfacing project on Kamehameha Hwy from Waimea to Waialeale is scheduled to go out for bid by the end of this year. Let's hope that job does not get tied up in challenges and red tape.

We continue to make progress on resolving the Department of Transportation – Airports Division (DOT-A) concerns regarding Kawaihapai Airfield (aka Dillingham). The two most critical issues are securing a long-term lease between the Army and DOT-A, and how to move forward with a water system that neither the Army nor DOT-A wants to manage.

The lease negotiations appear to be going well. An important change this time is the understanding and commitment that maintenance of the water system will no longer be a requirement of the lease.

The water issues are complicated. The water well is on Army property and both the Army and DOT-A are equally responsible for its operations, even if neither has a mission to be a water company to outside parties. The airfield, Mokuleia Beach Park, several private residences, Camp Erdman, the Kaena Point Satellite Tracking Station, and an agricultural operation all depend on this system. The old water system has at least one major leak and the current usage far exceeds the permitted draw. The water system cannot be turned off and the leaks must be fixed, no matter what happens to the aviation activity.

Creation of a new water utility or cooperative is likely and all of the users have an interest in making it financially stable going forward. The small number of users does not, however, have the millions of dollars needed to repair the system.

We are investigating how best to fund the repairs and then turn over a functioning system to a new operator. A mix of Federal, State and County funds might be achievable because of the diverse entities who need the water.

DOT-A recently extended its termination deadline for airfield tenants until December 31st. We believe a more appropriate deadline is July 5, 2024, the date when the current lease is set to expire. The water issues will not be resolved by the end of this year and DOT-A will not have been able to meet its obligations to leave. We will either have the issues resolved or we will not by 2024. In the meantime, the tenants should not have to worry about eviction. We will save the airfield; it has to be done.

Please do not hesitate to call or write if you have any opinions, questions or solutions that might help me better represent you. My phone number is 586-7330 and email address is SenRiviere@capitol.hawaii.gov. Follow us on FaceBook or online at SenatorRiviere.com. Mahalo.

North Shore News
Next Issue July 28, 2021
Deadline July 16, 2021

PKB
"Da Best"

SUPER SAVER

**FRESH SANDWICHES MADE DAILY
DRINK N' SANDWICH
PKB COMBO DEAL**

**BUY ONE TRAY SANDWICH
GET A DRINK
FOR JUST \$1**

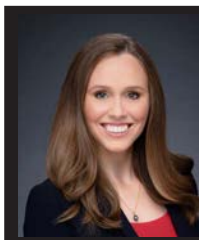
Not valid with other discounts, promotions, or daBest VIP card discount. This offer is valid between June 30 - July 7, 2021.

Ham & Cheese
Italian
Pastrami
Roast Beef
Tuna
Turkey

HIT DA SPOT!

ONO!
YUMMY!

www.pkbsweets.com



**Representative
Lauren
Matsumoto**
Serving You in District 45

Aloha Friends and Neighbors!

As someone who grew up in a farming family, any legislation involving agriculture and farming is something I pay a great deal of attention to. I wanted to highlight some of the bills that passed through the legislature during this past session. Here are some of the bills relating to agriculture and farming:

HB237 RELATING TO INVASIVE SPECIES - Appropriates \$350,000 for the 2021-2022 fiscal year to the department of agriculture in order to alleviate and control the invasive species, the two-lined spittlebug, and recovery of the rangelands damaged by the invasive pest.

HB247 SD2 RELATING TO AGRICULTURAL LANDS - Ensures certain condominium property regime projects within the agricultural district are to be used for agricultural purposes.

HB767 RELATING TO THE FARM TO SCHOOL PROGRAM - Moves the Hawaii farm to school program from the Department of Agriculture to the Department of Education. Establishes a programmatic goal for the Department of Education that at least 30% of food served in public schools will come from locally sourced products by 2030.

HB817 RELATING TO AGRICULTURE - Requires each state department to commit to a certain percentage of the produce purchased by that department consisting of fresh local agricultural products or local value-added, processed, agricultural, or food products.

SB186 RELATING TO RESTRICTIONS ON AGRICULTURAL USES AND ACTIVITIES - Disallows the enforcement of a re-recorded homeowners' association restriction if the restriction prohibits bona fide agricultural uses and activities on agricultural land.

SB336 RELATING TO AGRICULTURAL LOANS - Increases the maximum amount the Chairperson of the Board of Agriculture is authorized to approve for agricultural loans and aquacultural loans to \$50,000 of state funds, rather than \$25,000.

SB489 RELATING TO AGRICULTURAL BUILDINGS - Increases the maximum area for each agricultural shade cloth structure, cold frame, and greenhouse which could potentially qualify the structure for an exemption from building permit and building code requirements.

For a full list of bills that passed during the 2021 legislative session visit my website www.RepMatsumoto.com and select the 'Information' dropdown menu.

As always, please feel free to contact me if you have questions or concerns about any happenings in our community. Call me at (808) 586-9490, email RepMatsumoto@capitol.hawaii.gov, or visit RepMatsumoto.com.



*Senator Gil Riviere, Rep. Lauren Matsumoto and Rep. Sean Quinlan at the Anahulu Bridge & SNS celebration
Photo: Barbara Ritchie*



Please join us in welcoming
Pastor Amel Dominguez

After helping plant Island Grace Church in Mililani for seven years and serving as Associate Pastor at Hawaii Kai Church for nearly 5 years, Pastor Amel, along with his wife Vangie and four children, have come to be part of our church ohana here in the North Shore. He serves as the new Senior Pastor at First Baptist Church of Haleiwa.

You are welcome to join us for in-person church services

Every Sunday, 10:45 AM
at 66-415 Haleiwa Road, Haleiwa, HI 96712

You can also visit us on the web

<http://fbchaleiwa.org>

For more information please contact us via...

Email: info@fbchaleiwa.org

Phone: (808) 643-4847



IN LOVING MEMORY

Laurine Uilani (Bon-Bon) Lacar of Waialua, Oahu passed away at her home on April 3, 2021. She was born on October 24, 1955, in Kona on the island of Hawaii.

She is survived by her husband Abraham Lacar, 3 sons: Sky I.K. Lacar, Starr K. Lacar, Sage K. Lacar and 1 daughter: Summer H. Taupau. 2 brothers: James L. Awai III, Keith K. Awai. 6 grandchildren: Justyce K.C. Lacar, Skyline K.G. Lacar, Cyres O. Lacar, Kingston L.L. Taupau, Titan I.K. Taupau, Leah K.S. Lacar and Dorothy K. Awai.

Laurine and her family moved to Haleiwa in 1958. Her family is 10 generations in Haleiwa.

Laurine attended Haleiwa Elementary School and graduated from Waialua High & Intermediate school. She enjoyed playing sports, participating in volleyball and softball. Laurine was a devout Christian and was passionate about her faith and her relationship with God. She attended Haleiwa Evangelical Mission International Church. Gathering and spending time with her ohana was also important to her. She cherished all the moments and memories just being together. Laurine was a person of great character, so loving, caring, kind, generous with her time and always willing to help others in need. She always had a beautiful smile, a positive attitude, hard working, patient, and most of all, loving. Her legacy of love will live on in the minds and hearts of all who knew her. Laurine was a virtuous woman who inspired many people. She will be deeply missed.

Private funeral service for family only, due to covid restrictions. The public is invited to the burial service at Mililani Mortuary on Tuesday July 6, 2021, at 12:15 pm. Please follow all covid guidelines, maintain 6 feet of distance and wear a mask. A drive by will be held on Sunday July 11, 2021, at 67-157 Kuoha St. Waialua from 11:00 am to 3:00 pm.

Flowers and lei are welcome.

The Covid Transition

Naty Camit Hopewell

A lot of us have been in hibernation because of the covid-19 virus. As vaccination rates have increased, the number of new infections have decreased resulting in a loosening up of covid related restrictions in Hawaii. However, we still have the virus in our community and people are still being exposed and contracting the disease. Many are asymptomatic but can still pass the virus to an un-vaccinated person. The fear now is the various strains of covid from places, such as England and India, that are more virulent. It appears that vaccinated people are still protected. The advice from the health world is for people to get vaccinated so we can reach the goal of "herd immunity." Remember, the number of covid infections are decreasing, but people are still dying.

So, what should you do? Continue to use good judgement as to when to wear a mask. If you are fully vaccinated, outside and not close to a lot of people, you don't need to wear a mask. If you are indoors with other fully vaccinated people, you don't need to wear a mask. If you are outside with many people gathered together, wear a mask. If you are un-vaccinated, protect yourself with a mask whenever you are with other people.

The guidelines regarding travel in Hawaii have recently been loosened. If you are fully vaccinated, traveling inter-island or out of state or you are returning to Hawaii, you need to show proof of vaccination; you don't need a covid test or quarantine at your destination. If you are un-vaccinated and returning to Hawaii, you will need to provide proof of a negative covid test.

Remember that guidelines change with increased rates of vaccination, especially when we hit the 70% goal. We continue to provide covid vaccinations and testing at Koolauloa Health Center; call for an appointment at 293-9231.

Ko'olauloa Health Center

293-9231

*We accept everyone regardless of ability to pay.
Improving the quality of life for all. Imua!*



North Shore Chamber of Commerce News

North Shore Chamber of Commerce Receives Hawaiian Electric Grant for the Ka Iwa Garden at Weed Circle

Hawaiian Electric has awarded the North Shore Chamber of Commerce a grant of \$3500 for the repairs and maintenance of the irrigation system at Ka Iwa Garden, which is the triangle at the entrance of Hale'iwa. The Ka Iwa Garden has the large "Welcome to Historic Haleiwa" sign and is one of the first sights people see when entering our town.

The North Shore Chamber of Commerce sponsored and coordinated the project under the direction of Executive Director, Antya Miller from 2012 to 2015. The project was financed by a Grant In Aid from the City and County of Honolulu, Chamber member donations, and pro bono services from landscape architect Richard Brownlee, Island Mechanical Boring Company, and Boyd Ready, landscape contractor. Through an agreement with the State of Hawaii, the irrigation system is the responsibility of the North Shore Chamber of Commerce, and the State is responsible for water and mowing

the grass.

"This Hawaiian Electric grant will ensure that our plants and grass stay healthy... Haleiwa deserves a beautiful and inviting entrance into town," says Chair Mary Wood.

"Well-maintained and welcoming entry points make both visitors and residents feel comfortable, safe and connected. Paying attention to keeping public spaces clean and well-kept is cost-effective and sustainable," says Kiersten Faulkner, Executive Director of the Historic Hawaii Foundation, a non-profit dedicated to improving and saving historic places. "Great welcome signs are a great draw for area businesses. It also shows that the community takes pride in its business district," says Roxana Jimenez, Manager of the North Shore Chamber of Commerce.

Jeff Dorr of Dorr to Paradise Landscaping will perform the repairs on the irrigation system and Brent White of Lush Palm Landscapes will provide the maintenance. Both companies have also donated their services to Weed Circle and Chamber projects.

"We are very grateful to Hawaiian Electric, the North Shore Outdoor Circle, volunteers and businesses for all doing their part to improve our town," says Roxana. To find out how you can contribute your talents to our community, call the North Shore Chamber of Commerce at 637-4558.



The Surf N Sea family and The Matsumoto Shave Ice family present a \$2000. check to the North Shore Chamber of Commerce. Photo: banzaibetty.com



*Kuilima Farm food producers with Tom Donovan, John Leong and Chris Lee
Photo: Pono Pacific/Kuilima Farm*

New Kuilima Farm Stand Opens Farmers Transition From Former Farm Stands

Turtle Bay Resort and land manager, Pono Pacific, recently opened the new Kuilima Farm Stand, located along Kamehameha Hwy in Kahuku. Kahu Kordell Kekoa conducted the blessing, and local keiki from Halau Papa Ohia shared a hula to mark the occasion before the new farm stand opened to the public.

Produce farmers from the former stands across from Kawela Bay are transitioning to the new stands to the new venue—which is just a few hundred feet down the road closer to Turtle Bay—and will sell their farm-fresh goods alongside other locally made items like books, clothing and Kuilima Farm stuffed animals for keiki. The Kuilima Farm Stand will be open daily from 9 a.m. – 5 p.m.

“I’m so excited to be at the new stand,” says Chue O., who is known for her tropical fruits selection. “I like to give people what I would want, so that’s why I never sell a bad fruit. I love teaching people about what’s in season and helping them learn about anything they want to know about growing food.”

Turtle Bay Resort and Kuilima Farm strive to be the first “farm-to-hotel” operation, where all resort restaurants use fresh produce grown directly from the farm across the street.

“Kuilima Farm represents Turtle Bay Resort’s commitment to agriculture in Hawai‘i and diversifying our economy,” said Tom Donovan, Vice President

and Managing Director, Turtle Bay Resort. “Our ability to offer fresh vegetables and fruits for the community as well as the resort and increase our sustainability is a very important initiative for Turtle Bay Resort.”

Kuilima means “holding hands with the land,” which is true for Turtle Bay Resort’s vision for the 468 acres of agricultural land on O‘ahu’s North Shore. To support the farmers of Kuilima Farm and the North Shore community, Turtle Bay Resort has invested millions of dollars in infrastructure improvements. The farm and community gardens are managed by Pono Pacific, on behalf of Turtle Bay. Farm plots of land are licensed to farmers who are expected to use high-efficiency natural farming techniques, obtain food safety certification, and deliver sustainable food production.

“The new roadside Farm Stand is important as it provides our farmers the ability to sell their farm-fresh goods, while providing access for North Shore residents and visitors to enjoy Kuilima Farm,” says Chris Lee, VP of Farm Development. “This modernized experience allows residents and guests to explore local agriculture, which will also grow into a model farm with educational experiences over the next few years.”

For more information on Kuilima Farm, visit kuilimafarm.com or follow them on Instagram @KuilimaFarm

Anahulu "Rainbow" Bridge & Surf N Sea Building 100th Anniversary Celebration



Event Organizers- Carol Philips, Roxana Jimenez, Mary Wood & Kaya Au
Photo: banzaibetty.com



Mahalo to the 8th Sustainment Brigade led by Lt. DeCosta & Joe Lazar for giving the Anahulu Bridge a good birthday bath! Mahalo to Rich DeVicente & NS Shark Adventures for painting the ugly spots!



Mahalo to Jack Reid for organizing the classic car parade which was led by a 2021 Buick to commemorate the first car to cross the bridge in 1921, also a Buick.
Photo: Barbara Ritchie



Mahalo decorators Carol Philips, Bernie Zukevich, Jana Valmoja, Val Oga, Kailani Andersen and Rachelle Miller. Also, mahalo to Susan Matsushima/Alluvion.
Photo: banzaibetty.com



Mahalo Keith Awai
Photo: Barbara Ritchie



Mahalo Moki Labra & Gary Kewley
Photo: NSCC



Cleaning Anahulu Bridge
Photo: NSCC



NORTH SHORE REAL ESTATE TRENDS

by Richard Sterman (R)
of Sterman Realty

WHAT AFFECTS OUR HOME PRICES?

Home & Stock Prices are similar, going up or down depending on the market "Trends," however, like some companies, your "Home" never goes out of business!

In April I wrote, "higher prices seem inevitable" and this Trend seems to be continuing, so - what is it that actually affects our Real Estate prices?

The old "Supply & Demand" theory is probably the #1 reason with Supply being cut in half and Demand more than doubling as of late. But what else affects Real Estate prices? Heres a Partial List:

1. The Federal Reserve: They helped cause the current "Inflationary Spike" but now, they say, "Inflation is Transitory," therefore, they are keeping the Interest Rates low fueling even higher home prices. However, just the words, "We're thinking of raising interest rates" sends markets lower and interest rates higher. That happened last Friday (6/18) causing stocks to sell off and rates to rise but it was all forgotten today resulting with a rebound in the markets and falling interest rates. The Federal Reserve Bank surely affects our home prices!

2. Inflation Sentiment: If you were thinking of buying a house and you heard that home prices will go up another 20% by this time next year, you would rush out and try to buy a home today! That seems to be the current thinking and so, activity is up.

3. Commodity Prices: Lumber Prices that were just \$300 (per 1,000 board ft) not long ago shot up to over \$1,600 last month (adding \$36,000 to the average cost of building a home), however, when the Federal Reserve concluded that this, and other 'inflationary pressures' were just "Transitory," Lumber prices started dropping along with other building materials like copper and steel!

4. Neighborhoods: A year ago people were fleeing neighborhoods in Honolulu and moving out to the "Country," however, tourism and the lack of a Laniakea Traffic solution by the Government is frustrating residents north of there and lowering the demand for some neighborhoods. At the same time the Sunset and Pupukea neighborhoods are gaining popularity with younger families because of stricter Government regulations on school districts requiring living in those areas in order to attend Sunset Beach Elementary. Neighborhoods can also find themselves with new harsher "Zoning" regulations such as the newly proposed Ag Land proposals or Shoreline setback rules, surely causing a continued "Trend" that will increase our home prices on the North Shore. Too little government planning for infrastructure or too much government regulations through zoning laws can both affect our home prices, especially out here on our very limited North Shore.

Richard Sterman is a long-time North Shore Realtor and his company, Sterman Realty, has been serving the North Shore for over 40 years. Contact Richard by calling 808.638.8600, emailing richard@Sterman.com or surf over to www.STERMAN.COM

Letters to the Editor

Aloha Editor:

I have a simple suggestion to help the traffic mess at Thompson's Corner. The suggestion is to add a left turn lane from Waialua towards Paalaa Kai, and keep a through lane adjacent to it towards Wahiawa. For many years, when it is safe, drivers have been going on the right past cars turning left there anyway. The 4 way stop would still work for both lanes, no problem. But twice as many cars could get through.

Another problem is the closing of foot traffic over the closed bridge, so all the kids that live just on the Haleiwa side that go to Waialua Elementary now have to get rides all the way around. This compounds the traffic and in relation to the little keiki seems just plain mean. A 50 lb child is not going to collapse the bridge.

Mahalo, Roshan Kumar
Waialua

Aloha Editor:

A Kidney for Lei

Leilani Zukevich born and raised in Waialua has been fighting chronic kidney disease her entire life. After watching her family members face similar issues, she knew this day would come...but as a friend, it is difficult to watch her face these challenges, especially while her children are still school-aged.

Currently on dialysis, Lei's kidneys are only functioning at 4% and she is in need of a kidney transplant. Her medical staff is in the process of looking for a viable kidney, but have asked her to search for a donor on her own to improve her chances. Her family members are undergoing testing to see if they are a match, but due to their own health conditions, it is unlikely that they will be able to donate.

We are asking for your help with two things:

- 1) Finding an O+ kidney donor
- 2) Monetary donations towards her living and medical expenses

A GoFundMe campaign has been started, please visit: <https://gofund.me/a7b490a3>

Mahalo, Victoria Williams



BANZAI NORTH SHORE WIRELESS

SUNSET'S MAHINA MAEDA QUALIFIES FOR SURFING OLYMPICS

Sunset Beach groom Mahina Maeda has grown into an Olympian! Maeda's home break Sunset must have been the greatest training wave in the world. She has been ripping since the early age of 7 or 8. Maeda qualified for the Olympics at the International Surfing Association El Salvador event in solid surf at La Bocana and El Sunzal which was held from May 29th - June 6th. Maeda's parents are from Japan giving her dual citizenship and was able to try to make the Japan Olympic team. After some deliberation the 5'4" giant of a surfer decided to go for the opportunity. Let's call her Mahina the "Machine". She can crank out some hard turns and is not afraid of big waves. She surfed Nazare at 16 yrs and soon after almost qualified for the World Tour. We wish the Hawaii ripper to win a medal to add to her accomplishments! Check out all the results at ISAsurf.org

ANAHULU BRIDGE AND SURF N SEA BUILDING CELEBRATED

Congrats to the North Shore Chamber of Commerce for their organization of a great event celebrating the historic Hale'iwa Anahulu Bridge and Surf N Sea Building. The two landmarks, both 100 years old, are two most prized and recognized locations in Hale'iwa. The Surf N Sea building started out as a dry goods and tailor shop to a grocery store and then a hardware, guns and fishing supply store. Now Surf N Sea boasts the best collection of surfboards and accessories. On the ceiling of Surf N Sea you'll find one of the largest collections of vintage surfboards collected by owner, Joe Green. Check out www.anahulubridge100.org for celebration events and information.



Surf N Sea - Joe Green and family enjoying the celebration!

Photo: banzaibetty.com

Through Tourists' Eyes

By Kezia Burgoyne

Hawaii receives over 10M tourists a year (Hawaii Tourism Authority). A huge portion of these visitors eagerly flock to the North Shore of Oahu, spending fortunes to enjoy this slice of paradise. Tourism received a huge shock in 2020 as the COVID pandemic made it impossible for most visitors to reach our islands. Although we experienced several pros and cons to the changes, now, with the summer of 2021, tourists are back - perhaps more than ever.

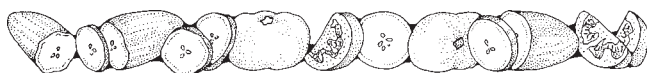
As someone who has grown up on the North Shore - among beaches, mountains, tradewinds, and sunsets - I'm curious: what makes my hometown so endearing for tourists? What keeps them coming?

On a surface level, the answer is obvious. Nicholas, a tourist from Fort Myers, Florida, describes his first impressions of the North Shore as "beautiful sand, beautiful beaches, breathtaking backdrops of hills and mountains, gorgeous food, different cultures everywhere: it's awesome, it really is." Jenica and Eric, from Las Vegas, Nevada, adore the beaches and Tiffany, from Portland, Oregon, describes the North Shore as analogous to heaven.

Although the North Shore's beauty is obviously breathtaking, upon pressing deeper, I found that tourists' attraction to the island lies far beyond surface beauty - the North Shore has the potential to change lives. Tiffany Dick explains how the North Shore inspires her "to be a little bit more easy going and not embrace the pace of life at home as much." Similarly, Jenica echos, "[Coming to the North Shore] helps me to think about slowing down and not being so crazy with things that are important."

It was encouraging to hear how, for many tourists, the island encourages them to look beyond their own individual experiences. Eric explains, "There is a deep heritage here - one of the nice things about coming is learning more about that and the respect you have for it." Walker, from Portland, Oregon, describes, "seeing all of this beautiful - God's creation - I feel like we need to preserve it better . . . I don't think humans have been doing a great job at that, and I realize I need to do that more."

Although the tourism industry can bring both frustration and joy to the North Shore, it is also a huge part about what makes this place so rich in perspective and experience. I am grateful to have understood tourist perspectives a little bit more this month, and hope the North Shore can continue to



FARM-ER: NOUN

A person who is OUTSTANDING
in their field



Local Businesses Celebrating Little Victories in 2021

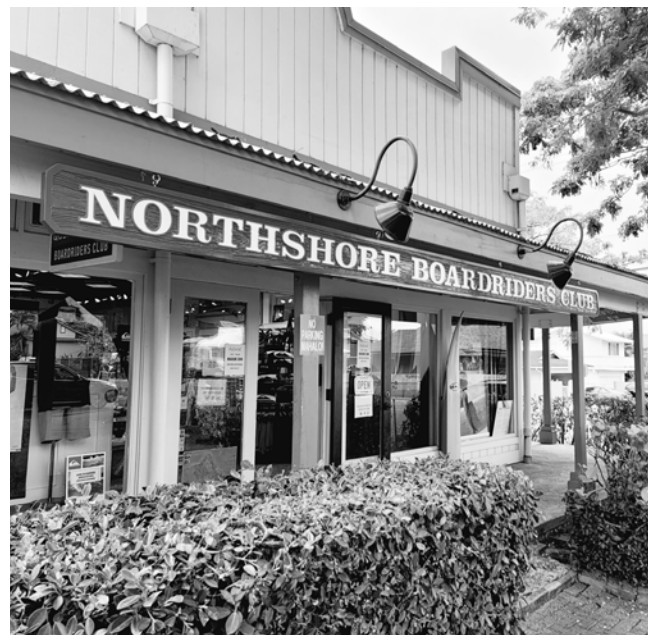
By Chris Wall

As Haleiwa gears up for more visitors, residents and business owners are also focused on the little wins that got us through a difficult 2020.

Visitors are returning to enjoy some of the things we take for granted: amazing beaches, fantastic food, a remarkable art scene, and mom and pop shops that are actually worth a visit. Speaking of these mom and pops, many of them are reflecting on this past year and celebrating something of a little victory... keeping their businesses open.

Extended lockdowns put North Shore families and businesses to the test and, unfortunately, not all of those businesses made it through. "It was stressful," says Maya Kanaiaupuni. Maya runs North Shore Boardriders Club, a surf shop founded by her father, legendary sunset surfer Barry Kanaiaupuni, and her mother, Leslee. "We have a strong community," continues Kanaiaupuni, "It's not like other places. The town rallies around those in need. When homes in Haleiwa were hit with flooding, it was the community that stepped in, and they stepped in before local officials could. That same community stepped up and supported Haleiwa's local businesses as soon as they could and it kept us going."

North Shore Boardriders Club carries swimwear, Quiksilver clothing lines, and custom "BK" series surfboards. You'll also see remnants of surfing's golden era in the form of classic photos on display and trophies from contests past. It's a family-run business that's been a local stop for residents and visitors to Oahu since 1996. North Shore Boardriders Club is thrilled to celebrate one little victory at a time as we all start getting back to normal.



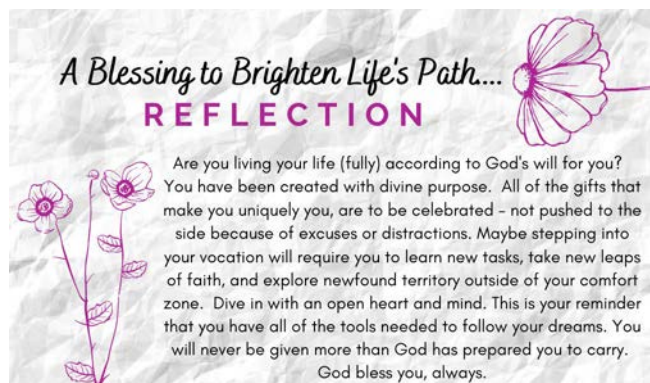
Eggsactly Right

by the Happy North Shore Farmer

“You are what you eat” could be applied to our eggs more than any other farm item. Cage-free, free range, organic...why should we care what kind of eggs we buy? First of all its important to know unless your eggs say “cage-free” they are from caged hens. Conventional cages are 8 1/2 by 11 inches. That’s really small - about the size of a piece of paper. That’s it. One can only imagine the stress hormones and inner quality of eggs from a bird living in a cell that size.

“Free range”, on the other hand, doesn’t mean the chickens run around a beautiful field, eating bugs in the sunshine. Far from it. “Free range” means they have NO access to the outdoors, except maybe a window, door, pop-out or patio, in limited versions. The “free” actually means no cage (not that they can actually GET outdoors). There is more violence and poorer air quality, though, in cases. Are those stress chemicals in the chickens and lack of fresh air and sun what we want our family to eat? Mass production can also be using feather meal, chicken litter, etc. Even “organic” is misleading... its not saying “pasture fed”, only that what the chickens eat is organic. Hormones and steroids and antibiotics are already banned for human consumption, so no need to pay attention to those labels.

The bucolic, idyllic, happy chickens we want to think of as “free range” are actually called “pasture fed”. These are the holy grail of produce. If the eggs are labeled “Certified Humane” and/or “Animal Welfare Approved”, they get the 108 square feet of outdoor space, the barn space, fresh air and sunshine we want. Pasture fed must include at least one of those labels to be sure that you are getting beautiful, tasty, happy eggs from happy chickens. But best of all is to know your farmer, and buy local, direct off the farm to know how they raise the animals, how they house them, and be willing to pay for that. They will have brighter orange yolks, be richer in vitamin A, E, D, and omega-3s, be better tasting, and often fresher. If you want to prevent more suffering, downright unhealthy or unhappy animals, and support your own health and peace of mind, support your local egg farmer, and never buy another unhappy egg from the store again. (The chickens and your local farmer will thank you.)



A Blessing to Brighten Life's Path...
REFLECTION

Are you living your life (fully) according to God's will for you? You have been created with divine purpose. All of the gifts that make you uniquely you, are to be celebrated - not pushed to the side because of excuses or distractions. Maybe stepping into your vocation will require you to learn new tasks, take new leaps of faith, and explore newfound territory outside of your comfort zone. Dive in with an open heart and mind. This is your reminder that you have all of the tools needed to follow your dreams. You will never be given more than God has prepared you to carry. God bless you, always.

Waialua Farmers' Co-Op Market Is Still At The Old Sugar Mill

Waialua Farmers' Co-op Market relocated to a hidden oasis on the Waialua Sugar Mill compound. At the gate drive toward Island X and turn right at the red building, formerly the Waialua Kitchen. Turn left at the fork of the dirt road and park your vehicle.

There on the grassy area are booths filled with ethnic vegetables, organic produce, tropical fruits and flowers. The tents display micro greens, Zen mini gardens, succulents, air and landscape plants. Our farmers willingly share their knowledge of their products.

Visit the artisans and crafters featuring cards and paintings of island life, sea inspired jewelry, Waialua caps, Hawaiian bags and aprons.

Try local honey, island jams, preserves, fruit breads and other baked goods. Munch on a picnic lunch of chicken or fish while enjoying the majestic Mt. Kaala and the Waianae Range.

Waialua Farmers' Co-op Market operates under the umbrella of Waialua Farmers' Cooperative (WFC). WFC is a not-for-profit organization, which supports 60 Waialua Farmers on its farm lots on Farrington and Puuiki Road. Buy from our farmers. Saturdays, 8:30am-1pm. Keep Waialua Country!



GLUTEN-FREE & VEGAN BAKED GOODS
Small Batches Made in Haleiwa
Small Bits & Bites
For the Active Sweet Tooth
Every Saturday at
Waialua Farmers Co-Op
IG: @MARSHALLSBAKERY
meals2heal@yahoo.com

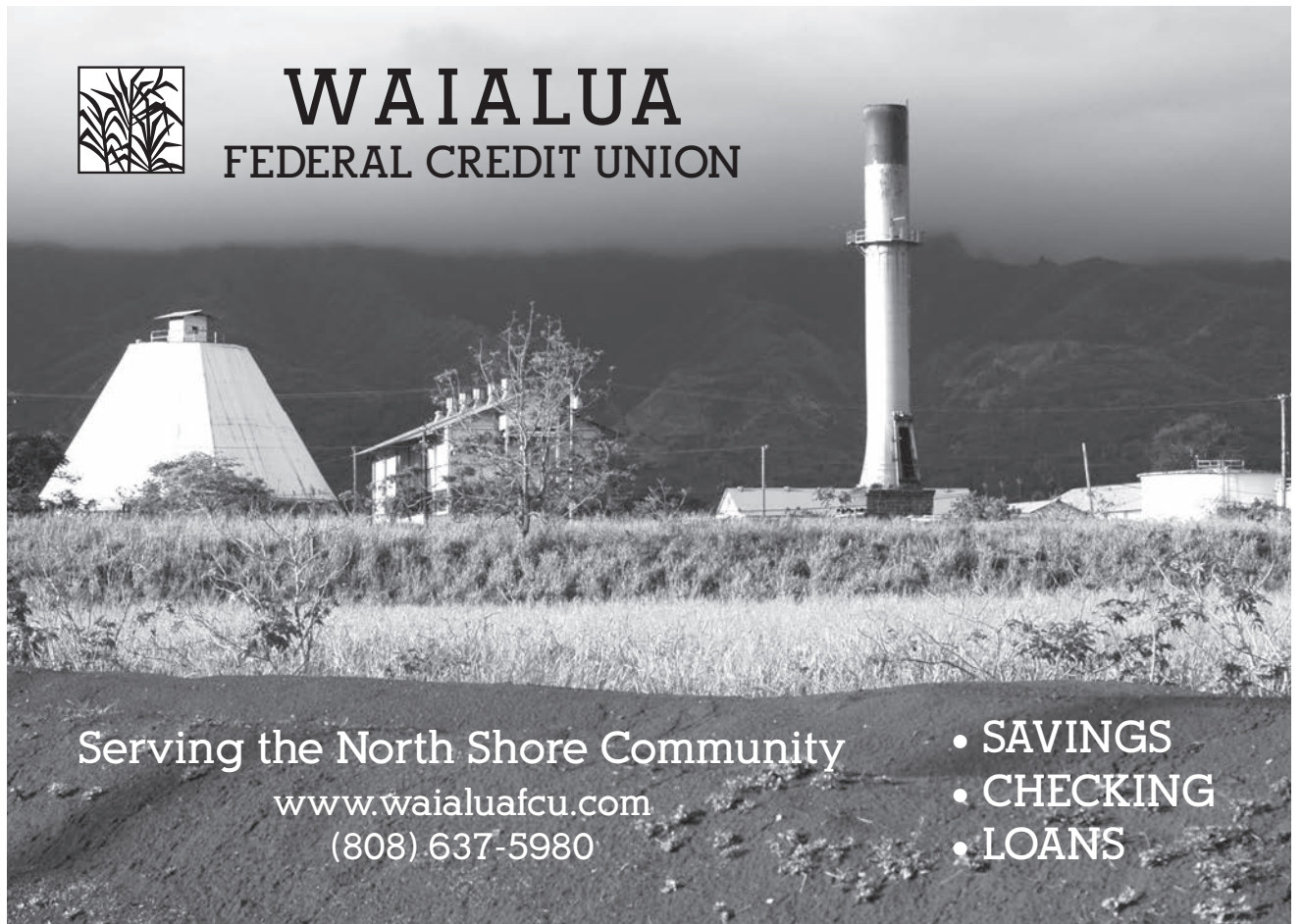


NorthShoreMicroGreens.org
Loaded with Nutrition, Full of Flavor and a List of Health Benefits Longer Than the Traffic at Turtle Beach

- ~ All non-GMO
- ~ Grown to Order
- ~ Lots of Choices
- ~ Affordable Prices
- ~ Same Day Harvest & Delivery Fresh



WAIALUA FEDERAL CREDIT UNION



Serving the North Shore Community

www.waiialuafcu.com
(808) 637-5980

- SAVINGS
- CHECKING
- LOANS



Mahalo to the North Shore partnering farms with Aloha Harvest : Ho Farms, Alex Products, B&T Farms, Kahuku Community Farms and Pono Pacific. Pictured: Linda (NSN/NSFB) with Aloha Harvest drivers Marty and George.

BULLETIN BOARD

CELESTIAL
Natural Foods



Featuring the largest selection of certified organic produce on the North Shore.
No panic...ours is organic.
Open 7 days.
Mon.-Sat. 9am-7pm.
Sun. 9am-5pm

66-445 Kam. Hwy
Haleiwa, Hawaii 96712
Next to the Post Office
808-637-6729 • 808-637-1922 fax

LTC

Laie Trucking Company, LTD

* Ready Mix Concrete * Recycled Aggregates
* Pump Service * Hauling * Equipment Rental

PH: (808) 293-8710 PH: (808) 293-1296
P.O Box 121 FAX: (808) 293-2890
Hau'ula, HI 96717 laietrucking@hawaiiintel.net

"A LOCAL COMPANY, BUILDING A LOCAL COMMUNITY"

N-C PLUMBING & SUPPLY

Cont. Lic. No. C-8913



- RESIDENTIAL & COMMERCIAL SALES & SERVICE
- CONTRACTING & DESIGN • HOME PLUMBING SERVICE
- PLUMBING FIXTURES, HEATERS • FREE ESTIMATES

Nestor P. Calilao (Owner)	Bus:	637-8662
P.O. Box 769	Res:	638-5157
Waialua, HI 96791	Cellular:	372-8718

Pupukea Print Shop

Pupukea Print Shop

**PRINTING SERVICES
CUSTOM APPAREL
SHIRTS, VINYL DECALS**

no minimum orders
perfect for small businesses
email for a quote

@PUPUKEAPRINT
PUPUKEAPRINT@GMAIL.COM

TILE INSTALLATION

Lope Fuentes Lic# 31228
lope.fuentes@gmail.com
808-276-2257
www.fuentesstoneandtile.com

vanessa li style
north shore, oahu
private salon studio
(808)953-8221



www.vanessalistyle.com
vanessalistyle@gmail.com

Munden Design & Build

Lic.#BC19632

Design • Plans • Permits • Construction
Additions & New Residences
808 391-8616

Providing quality work since 1978



Dale Christensen C-29856 (808) 368-1473



NORTH SHORE FOOD DELIVERY

Let North Shore's original delivery service bring your next meal to your doorstep!
Thursday-Saturday evenings
Order online: dudefoodhi.com



MANA + PUA
NOW OPEN

CALIFORNIA VINEYARDS
+
HAWAIIAN ROOTS

Old Plantation Shops
66-526 Kamehameha Hwy

Open Daily 9am
Espresso Bar, Eatery, Winery
www.Manapua.wine



HAWAII STATE PUBLIC LIBRARY SYSTEM

Join the

Summer Reading Program 2021

Tails & TALES

June 1 - July 31, 2021

FOR CHILDREN, TEENS AND ADULTS

LEARN MORE



bit.ly/hspssrp

SIGN UP librarieshawaii.org/SummerReading

READ Free reading rewards and challenges for all ages

EARN For every 100 minutes read be entered into a drawing for

GRAND PRIZE Roundtrip for Four

provided by

Alaska AIRLINES



Sponsored by the Friends of the Library of Hawaii and the 2021 Summer Reading Sponsors



BACK TO SCHOOL Operation Backpack 2021




HOW CAN YOU HELP?

A monetary donation will sponsor a backpack loaded with needed school supplies for each grade (K-12).

This year our Operation: Backpack team will be working with the area schools and counselors to distribute backpacks.

Organizations and businesses interested in sponsoring fully loaded backpacks or for information and credit card donations please call Linda at 808-780-8037.

Checks can be made and sent to:
North Shore News or Once A Month Church
PO Box 117
Haleiwa, HI 96712

Donations can also be dropped of at:
North Shore Chamber of Commerce (M-F 10a-3p); Stonefish Grill (9a-8p);
WCA (Haleiwa Gym parking lot) Saturday, July 24, 9a-2p

Mahalo from North Shore News, Once A Month Church, and North Shore Food Bank



CLASSIFIEDS

The North Shore News is published every other Wednesday and mailed free of charge to all North Shore homes and businesses.

PRESS RELEASE POLICY: Submit press releases, mail or email to Editor, North Shore News, P.O. Box 117, Haleiwa, HI 96712. Please type your releases and keep them shorter than 200 words unless they are of an unusual news interest. Releases should be viable news stories and are published on a **space available basis only**, with priority given to those received in our office first. You may attach photos. We are not responsible for the return of any photos. All materials are submitted at owner's risk. We reserve the right to edit and/or refuse all submissions including advertising.

EDITORIAL POLICY: We welcome articles and letters from our readers. Letters to the Editor are published on a space available basis only and preference is given to shortness of length, and quality of content. We prefer to run not more than one letter, per person, per 6 month period. Letters subject to edit.

Views expressed by our contributing writers and advertisers do not necessarily reflect the view of the management and staff of the North Shore News. All rights reserved. Reproduction in whole or part without permission is prohibited. © 2021.

Editor & Classifieds

Linda Seyler

Typography

Downtown General Store

Contributing Writers

Betty Depolito

State Representative Lauren Matsumoto

Senator Gil Riviere

Councilmember Heidi Tsuneyoshi

Kezia Burgoyne

Richard Sterman

Tom Jacobs

Photography

Banzai Productions



Please recycle this newspaper.

SERVICES

SHORE ELECTRICAL SERVICE

New Const-Remodels
638-0049/Lic#C20777

Andres Plumbing

All your plumbing needs
808-256-7337 Lic#C24500

Sunrise Asphalt Services, LLC

For all your driveway, pothole and parking lot needs.
Licensed and Insured.
Lic# 37527
(808)754-9928
Sunriseasphaltservices.com

ALOHA COMPUTER

PC/MAC Repair/Virus Removal
MOBILE COMPUTER REPAIR SERVICE
372-2667

CS EuroCars Kapolei Mercedes Repair Shop

with low labor rates
ASE Certified Technician
27 years experience
2116 Lauuliwili St. Unit 104F
Kapolei, HI 96707 - Under New mgmt.
808-682-1957

ANGELS PLUMBING

Repairs
Remodeling
Renovation

638-7878
Lic. #C12004



DOG/CAT NAIL TRIMMING

At your home- only \$20.
Call 808-388-5336

IG: @nsnews_haleiwa

GERMAN CAR SERVICE

Professional-Qualified Technician
Call Gary
637-6800

HARVEY'S TOWING LLC

24 hr Towing Service
Lockouts, Jumpstarts & Recovery. Specializing in opening locked car doors.
Call anytime 478-0333

ESTRADA'S WE HAUL 'EM

Garbage-Rubbish-Trash
Call Rick 808-216-9419

BUSINESS SERVICES CENTER

Fast & Convenient Copy, Fax, Scan, Computer/Internet, Laminate, & More



Across from the Haleiwa Post Office

637-4558 • gonorthshore.org
#gonorthshore

- ◆ Rain Gutter Clean Out
- ◆ Pressure/Scrubbing
- ◆ Window Cleaning
- ◆ Auto Detailing

Ku's Aloha Cleaning
341-1656

CC SALVAGE

No job too small, we haul it all!
Island Wide Services
24/7/365
Wanted Junk Car
808-457-2103

HOT YOGA NORTH SHORE

IN-STUDIO classes everyday!

Sign up and book online.
www.hotyoganorthshore.com

North Shore Smoke Shop

Est. 2007
Covid Hours:
Tues-Sun 11am - 5pm
Closed Mon (temporary)
66-521 Kam Hwy, Ste B
Haleiwa 637-1750

Radiant Skin Care & Waxing

Aynjul Benigno
Licensed Esthetician
Call/Text 808-222-8124
radiant skincare and waxing.com

Ka'ala Healing Arts
66-216 Farrington Hwy #200B
Waialua, HI 96791

Hawaii Tree Co.

Trimming & Removal
Professional-Reliable
Free Estimates
808-462-2749

Haleiwa Accounting

Accounting & Bookkeeping services
Call Aaron 808-202-8235
HaleiwaAccounting.com

NORTH SHORE AUTO & TRUCK SERVICE

808-637-1234

HOW TO CONTACT THE NORTH SHORE NEWS

Letters to the Editor, and other items submitted for publication consideration may be sent to us via:

MAIL: P.O. Box 117, Hale'iwa, HI 96712

E-MAIL: NSNHaleiwa@gmail.com

NSN4Linda@gmail.com

PHONE: (808) 780-8037

www.northshorenews.com

CLASSIFIED ADS

Next Issue - July 28, 2021
Deadline Date - July 16, 2021

Would you like to receive the North Shore News via email in color! Just send us a message at: NSNHaleiwa@gmail.com

OFF da ISLAND
 Are you leaving Oahu on vacation or business? Do you live on a neighbor island, the mainland or foreign country and subscribe to the North Shore News? Send us a photo of someone in front of a sign or landmark holding a copy of the NSN. Email your photo along with the person or persons' name, community of residence, contact info and photo location to: NSNHaleiwa@gmail.com.

Classified Ad Rates
 3 lines (min.) \$18.89
 4 lines \$25.13
 5 lines \$32.45
 1" Box Ad \$41.88
 (27 characters in each line)
 Include your contact information.
 *Ads can be text, or emailed.
 We reserve the right to refuse any advertisement with a full refund.
 (808) 780-8037 • NSNHaleiwa@gmail.com

FREE ADS
Garage & Yard Sales, Reunions, Lost & Found.
 Email ad to: NSNHaleiwa@gmail.com



Marianne Abrigo, Properties

Specializing in - North Shore Real Estate
 Ask for our list of available properties and/or a free market analysis.

Marianne M. Abrigo
 "Realtor since 1974"

Office 637-3511
 Fax 637-0777
 Email mabrigo222@aol.com

HELP WANTED

Pet Care Professional
 w/ Grooming Skills
 Salary Neg. References required. Call for an appt.
 808-638-7073

Household Help
 Beachfront Estate
 16 hours per week
 808-637-0808

Looking for common area mowing and maintenance at Poamoho Estates
 Call 808-779-3519

Bike path clean-up
 \$15/hr Please call
 638-7643

P/T help, Mon, Tues, Thurs, Fri, 8am-12noon
 Must be clean, reliable, light labor. Please leave a contact number 637-8155

North Shore Chamber of Commerce is looking for volunteers to help with our Visitor Center sales and services. 3 hour shifts, Monday through Friday are available. Come be part of our team, helping the North Shore be a better place to live, work, and play!

Groundskeepers Wanted
 Full Time- 40 hrs per week
 Benefits Included
 \$16-\$18 /hr
 Experienced Preferred
 Call (808) 838-1202

GIOVANNI'S SHRIMP TRUCK NOW HIRING!
 Starting pay \$15 an hour plus benefits.
 Call 293-1839 or apply at the Kahuku location
 56-505 Kam Hwy, Kahuku

FOR RENT

TABLES & CHAIRS
 Call North Shore News
 780-8037
 All proceeds go to the North Shore Food Bank

MISCELLANEOUS

POTHOLES ALERT & REPORT
 State Owned Roads (e.g., Kam Hwy) **536-7852**
 City Owned Roads (e.g., KeNui/Pupukea Rd) **768-7777**

North Shore Serenity AFG (Al-anon Family Group) is still meeting Wednesdays at 6:30 pm, but for now it is via Zoom. The Meeting ID is 847 8326 6578, and the password is 809980. We plan to return to St. Michael's Church when COVID restrictions are lifted, but that won't be for awhile.

Haleiwa Jodo Mission
 Virtual Buddhist Services
 Search "Koji Ezaki" on YouTube

Sunset Beach Christian Church Food Bank
 Every Tuesday
 12 - 2pm

PURPLE VAN FOOD BOXES
 If anyone wants or needs a food box we can help and deliver.
 Please call 808-638-9627

Re-Homing Puppies Mix Lab Shep Ridge
 Must have a fenced yard. Call 808-222-4306

YES Project
 Connects families with school aged keiki to resources, hygiene supplies, food, clothing and social services. If you need assistance please visit the North Shore Food Bank Wed., July 7th at Kaiaka Bay Beach Park, 8am-11am

Hawai'i Statewide Marine Animal Stranding, Entanglement, and Reporting Hotline
Includes stranded/injured sea turtles, monk seals, dolphins, and whales.
Phone: (888) 256-9840

New Hotline Created to Report Derelict Fishing Gear
 Derelict fishing gear, like nets, is responsible for entangling marine life like turtles and whales. To report hazardous nets or other gear call:
The Marine Debris Rapid Response Hotline 833-4-Da-Nets (833-432-6387)

Get Vaccinated at Waialua Community Association
 66-434 Kam Hwy, Haleiwa
 Queen's is returning Sat., July 10th to vaccinate 1st & 2nd shots (12-2pm). Kaiser to vaccinate 1st shots on Sat., July 17 (9am-1pm).

A Rotary Opportunity
 The Rotary Club of Wahiawa-Waialua supported by Rotary District 5000 (Hawaii) is looking for 15-20 dedicated business professionals to start a club in the North Shore area. Rotary International provides opportunity for service within your own community, nationally, and internationally. These opportunities are endless and broaden your reach in making a difference in millions of lives!
 For more information, please contact Geoff Horvath, gjhorvath1@hawaiiintel.net or 808-436-7425. Please visit www.rotary.org

KQNS 107.3 FM Christian Radio
 Inspirational, Health, Music, Addictions, Marriage, Prophecy, Stories, etc..

North Shore Food Bank
 IG @nsfoodbank



Healthy patients from the inside
Outpatient Services

Cardiopulmonary

- Echocardiogram (ECHO)
 - Electrocardiogram (EKG)
 - Electroencephalogram (EEG)
 - Pulmonary Function Test
 - Treadmill Stress Test
 - Holter Monitor
- All services are available on one floor.*



Diagnostic Imaging

- Bone Density (DEXA Scan)
 - Computed Tomography (CT)
 - Mammography (3D offered)
 - Nuclear Medicine
 - Ultrasound
 - X-Ray
- Walk ins are available for some procedures.*



Laboratory

- General laboratory
 - Phlebotomy services
 - Transfusion services
- Walk ins are welcome.*

Rehabilitation

- Physical Therapy (Orthopedic, Neurology, Balance/Vestibular, Sports)
 - Occupation Therapy (ADLs, Hand)
 - Speech Therapy (VitalStim, Modified Barium Swallow Study)
- Come visit us in our new & expanded clinic.*



For your safety and the safety of others, **Wahiawa General Hospital** has implemented CDC safety recommendations which includes screening questions and temperature checks upon entering, face mask, social distancing, and proper cleaning techniques after every use to name a few.