



"E Ala Na Moku Kai Liloloa"



Photo: NSN

NORTH SHORE NEWS June 2, 2021 VOLUME 38, NUMBER 5



1965 Surf N Sea Building and Anahulu Stream Bridge Photo Courtesy of Surf N Sea

Hale'iwa Celebrates 100 years of the Historic Anahulu Stream Bridge and Surf N Sea Building

The North Shore Chamber of Commerce is kicking off its 100th Anniversary Celebration of the Hale'iwa Anahulu Stream Bridge & the Surf N Sea Building, on

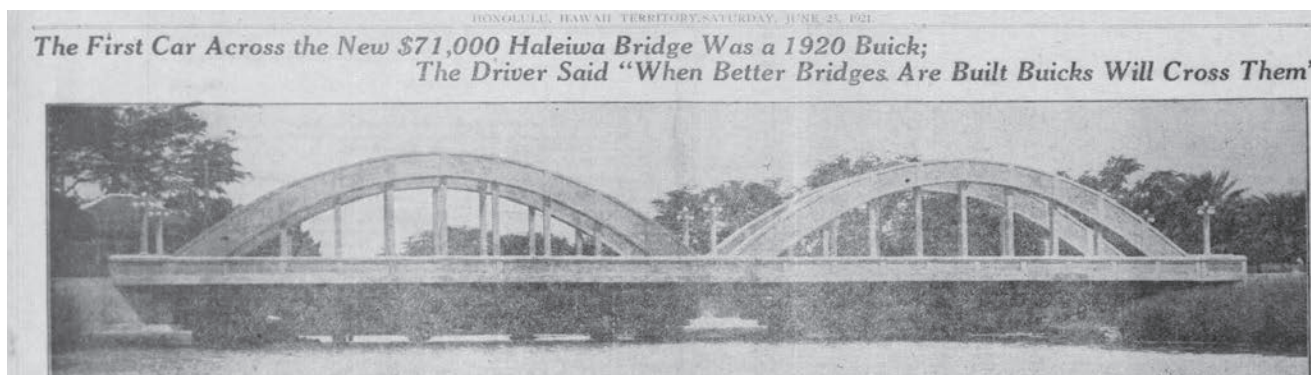
June 18, 2021, the centennial of the bridge's completion. The Offices of Governor David Ige, Mayor Rick Blangiardi and the Honolulu City Council will join in the

celebration by presenting a proclamation and certificates in recognition of the Anahulu Stream Bridge's 100th Anniversary.

A Honolulu Advertiser article, dated Saturday, June 25th, 1921, announced the Anahulu Stream Bridge's completion after nine months of construction. According to the article, on June 18th, 1921, a 1920 Buick was the first

PRSRT STD ECRWSS U.S. POSTAGE PAID HONOLULU, HI PERMIT NO. 1479	*****ECRWSSSEDDM**** RESIDENTIAL CUSTOMER
--	--

Continued on page 2



Continued from page 1

car to ceremoniously cross the bridge. The second car to cross the bridge was another older model Buick, both from the von Hamm-Young company's showroom which touted its slogan "Buick is First." The bridge cost \$71,000 plus county materials, was made of 91 tons of fabricated steel and was built to hold a 40-ton load. The article stated, "The heaviest tractor the army has on the islands, about 25 tons, was driven over the bridge as a test. A steam plow of the Waialua Agriculture company weighing less than the tractor crashed through the old wooden bridge last year, but the tractor went over (the Anahulu Stream Bridge) with no noticeable impression on the structure." The article further described how tests on the bridge showed that the new bridge's foundation would withstand flooding. Furthermore, the stronger bridge was necessary to support the increasing traffic to and from Hale'iwa and also accommodate the army's transport of heavy guns from Schofield Base.

The Surf N Sea building, which houses the oldest surf shop in Hale'iwa, was built by Ikuzo Sato along Maeaea Beach at Waialua Bay circa 1921. It has survived tsunamis and hurricanes over the ten decades - a testament to its excellent construction. In the early 1930s, W.H. Miura and his family lived upstairs while operating their dry goods and tailor shop downstairs. In 1935, the Ochiai family became the new owners and continued operations as a grocery store. The family lived upstairs and would leave a light on each night to guide the fishing sampans back to moor along Anahulu Stream. Later in 1944, Solomon Wong became the new owner of the grocery store; then subsequently the Mori family ran a soda fountain shop called Chic's Fountain. Paul and Priscilla Liskey started Surf N Sea in 1964, succeeded by Ron Stroble, selling surfboards, hardware, guns, fishing tackle and dive gear. From 1982 the Joe and Naoko Green family have operated Surf N Sea there, one of the most successful surf shops in Hawaii.

The North Shore Chamber of Commerce has launched the site, www.anahulubridge100.org listing a schedule of Hale'iwa town's special events in celebration of its beloved "Rainbow Bridge." Other

events being planned for the fall are Walking Tours by the North Shore Chamber of Commerce's Historic Preservation Committee and roll-out of the Interpretative Signage Project, an Anahulu Stream Bridge Art Contest for local school students, along with other festive events to be announced at a later date.

Businesses are also invited to join in commemorating this 100th anniversary! Contact Roxana Jimenez at the North Shore Chamber of Commerce, roxana@gonorthshore.org, to participate and be included in the calendar of activities at www.anahulubridge100.org or go to www.gonorthshore.org, Facebook/Instagram "gonorthshore."

BACK TO SCHOOL

Operation

Backpack 2021

HOW CAN YOU HELP?

A monetary donation will sponsor a backpack loaded with school supplies needed for each grade (K-12).

Checks can be made and sent to:
North Shore News or Once A Month Church
PO Box 117, Haleiwa, HI 96712

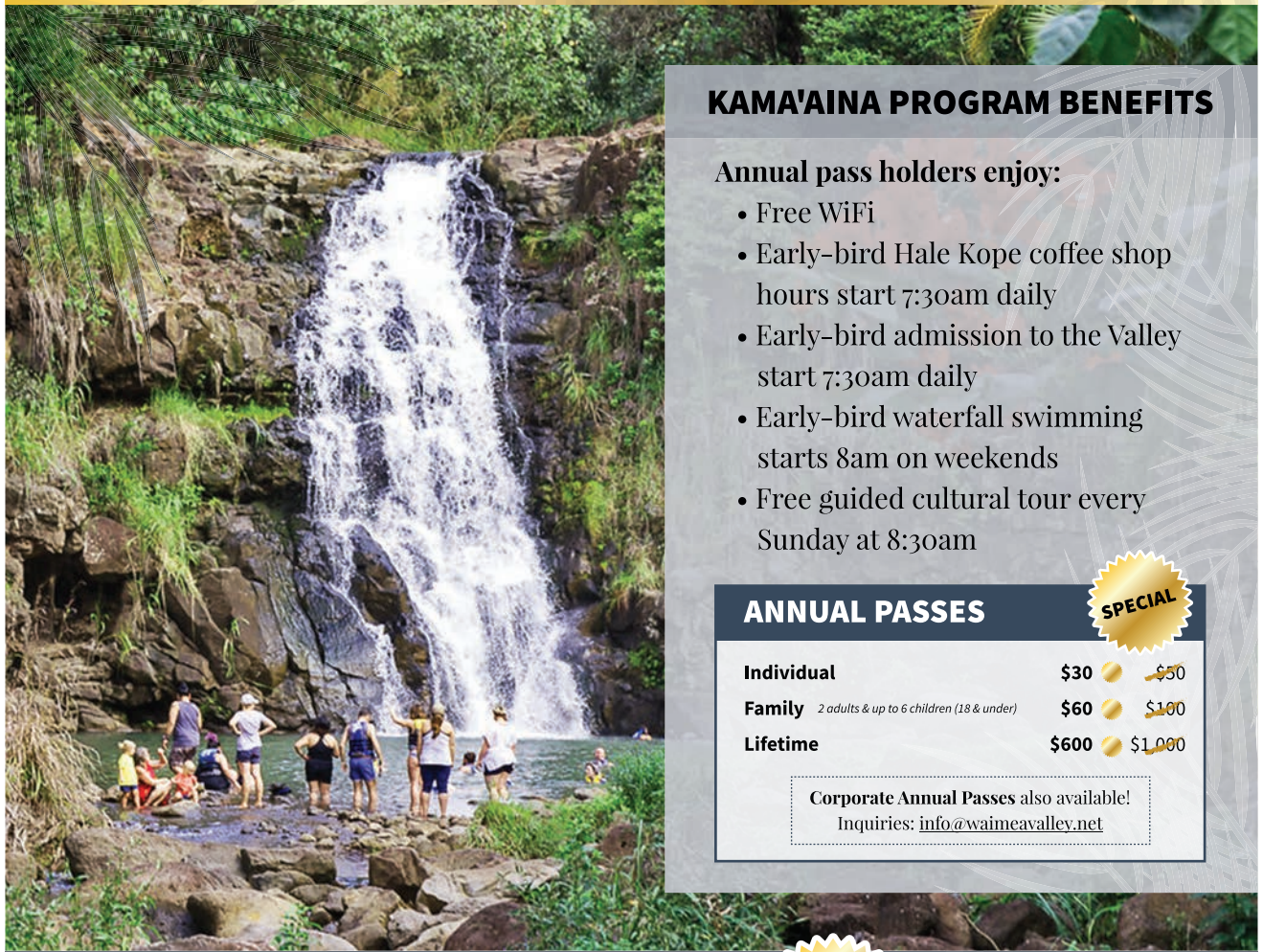
For more information or credit card donations please call Linda at (808) 780-8037

Organizations and businesses interested in sponsoring fully loaded backpacks please contact Linda. Donation drop off dates/locations and sign up information will be mentioned in the June 30th NSN.

Mahalo from North Shore News, Once A Month Church & North Shore Food Bank

WAIMEA VALLEY IS OPEN!

NEW KAMA'AINA PROGRAM Exclusively for Annual Pass Holders



KAMA'AINA PROGRAM BENEFITS

Annual pass holders enjoy:

- Free WiFi
- Early-bird Hale Kope coffee shop hours start 7:30am daily
- Early-bird admission to the Valley start 7:30am daily
- Early-bird waterfall swimming starts 8am on weekends
- Free guided cultural tour every Sunday at 8:30am

ANNUAL PASSES



Individual	\$30	\$50
Family <small>2 adults & up to 6 children (18 & under)</small>	\$60	\$100
Lifetime	\$600	\$1,000

Corporate Annual Passes also available!
Inquiries: info@waimeavalley.net



Monday - Sunday, 9am - 5pm
Extended summer hours through Labor Day!

Call: (808) 638-7766

@waimeavalley  

@waimeavalleyoahu 



WAIMEA VALLEY
HI'IPAKA LLC

WHERE HAWAI'I COMES ALIVE

WAIMEAVALLEY.NET




FARMLOVERS

We're Back!

Hale'iwa Farmers Market

— at Waimea Valley —

Thursdays 2-6pm

local farms food art

local organic produce • vegan cheeses • bagels and challah
 juices • smoothies • gluten-free breads • tamales • pasta
 burgers • pizza • dim sum • local artisans & more!

Find us on instagram: @alohafarmlovers



Join us in

Envisioning O`ahu's Storm Water Future

Central O`ahu	Mon, May 24, 7pm
East Honolulu	Wed, May 26, 7pm
Primary Urban Center	Thur, May 27, 12n
Ko`olau Poko	Tues, June 1, 7pm
North Shore	Wed, June 2, 7pm
`Ewa	Thur, June 3, 7pm
Primary Urban Center	Mon, June 7, 7pm
Ko`olau Loa	Tue, June 8, 7pm
Wai`anae	Wed, June 9, 7pm



Attend the meeting for your area or any other being held island-wide.

Register for a meeting:
bit.ly/StormWaterPlanning



**Councilmember
Heidi
Tsuneyoshi**
Serving You in District 2

Aloha,

Since March of this year, stream maintenance has been at the top of everyone’s mind with the heavy flooding along the north shore and windward coastline. The City Council recently adopted a resolution requesting the city administration to develop a stream maintenance schedule for city streams and drainage infrastructure. This measure is being supplemented with \$5 million in funding for the creation of a stream maintenance program. Hopefully through these efforts our residents and businesses can rest easier during the next rainy season. I would like to applaud the City’s Department of Facility Maintenance for their timely response in clearing the drainage ditch along Waialua Beach Road. This specific area was brought to our attention by residents and I am very grateful for the department’s quick action.

Waialua Beach Road Bridge was one of the roadways that felt the biggest impact during the flood event. Major structural issues were revealed, forcing the City to close the bridge as it expedites improvements to the integrity of the bridge. As the City continues to push for the completion of this project, I am humbly asking for your patience as the planning and construction of the bridge-work are ongoing. The bridge is not structurally sound so please refrain from accessing the bridge, even by foot or other means, like bike or moped. We want to ensure the health and safety of all residents. Work to clear the areas under and surrounding the bridge will begin very soon as preparations are made for the start of construction. It has also been communicated to my office that construction signage and cones are being thrown into the stream. I urge everyone to refrain from this type of behavior and discourage others from doing this as it causes unnecessary delays to the completion of the bridge improvements. Mahalo for your understanding.

Much of my council district is made up of coastal communities so I have much respect and admiration for our Ocean Safety Division and the lifeguards who risk their lives to protect our residents and tourists. For many years, lifeguards have been underrepresented. I introduced Resolution 21-122 which urges the Mayor to create a separate department for the City’s Ocean Safety division to provide the autonomy they need. Currently, our watermen fall under the Honolulu Emergency Services Department (HESD), but as an independent agency, lifeguards will have a greater voice in prioritizing their objectives as well as the flexibility of maintaining its own budget. This is a win-win as HESD would be able to focus on transitioning its operations and funding from the State to the City and Ocean Safety would gain the independence they desire. With the ever-changing landscape of ocean safety, in conjunction with higher visitor numbers, we need to ensure that Ocean Safety has all the resources it needs to effectively protect our residents and visitors.

Mahalo to everyone and if you ever have to contact our office please do not hesitate to call me at 768-5002 or by email at htsuneyoshi@honolulu.gov.



**HO’OMAIKA’I CLASS OF 2021!
YOU MADE IT!
BEST WISHES ON ALL YOUR FUTURE
ENDEAVORS!**

With Warm Aloha,
Councilmember Heidi Tsuneyoshi and
Daughters Hope and Haley Tsuneyoshi

PKB SWEETS BAKERY
OPEN DAILY 5:30am~7:00pm

2021 OUT-OF-TOWNER
 Discount Ticket _____
 FROM: _____
 Please show I.D. to confirm home town

Valid on your next visit to PKB!
 10% OFF 6 Snow Puffies OR
 15% OFF 1 Dozen+ Snow Puffies!

This card is valid between June 1, 2021 - December 31, 2021.
 Cannot be combined with PKB doBest VIP card or other discounts.

ALOHA & ATTENTION OUT OF TOWNERS!

Welcome back to the North Shore!
 Be sure to get one of our exclusive
OUT-OF-TOWNER cards from our
 cashiers for a **SWEET Snow Puffy**
 discount on your next visit!

www.pkbsweets.com

NORTH SHORE
SUSTAINABLE
COMMUNITIES PLAN
COMPREHENSIVE REVIEW
FUTURES WORKSHOP



"Tomorrow isn't what it used to be."

JOIN US

- › Learn about recent trends and how they could impact your future.
- › Explore alternative future scenarios for the North Shore.
- › Discuss ideas for creatively addressing challenges that fit the community's vision.
- › Share stories of community resilience.

SCHEDULE

PART 1: FUTURES SYMPOSIUM

Presentations and discussion on big-picture trends and ideas
› Wednesday, June 30th, 6-8pm via Zoom

PART 2: POLICY DEEP DIVES

Explore and comment on policy issues and solutions for the future of the North Shore:

Housing & Land Use Tourism Agriculture

Climate Change Infrastructure Energy

- › Online Open House publicly available June 30th to July 30th

Visit www.northshorescp.com to register for the Futures Symposium & join our e-mail list to stay up-to-date on the latest news, announcements, and events



If you require special assistance to participate in online events (interpreter, closed captions, etc.), please call Melissa May (808) 628-5861 or email your request to mmay@ssf.com at least five business days prior to the event.

Hawaii's Best Mexican



Restaurant & Margarita Bar

CONGRATULATIONS TO ALL NORTH SHORE SENIORS!
Let Cholo's Catering bring the fiesta to you!

For Extra Special Events

Rent the Cholo's Wagon!

Kama'aina rates and custom pricing on request.

Open Everyday 9:30am-9:30pm Happy Hour: 4-6pm M-F (Food & Drink Specials)

North Shore Marketplace, Haleiwa
637-3059 www.CHOLOS.mx



Ho'omaika'i 'ana!
Congratulations to the Class of 2021!

May your graduation be the beginning of many more wonderful achievements in your life!

As you venture out into this world, always remember:

"With every drop of water you drink, every breath you take, you're connected to the sea." - Sylvia Earle



@malama_pupukea_waimea
www.pupukeawaimea.org

WV Revamped Artisan Program

'Ano'ai Kākou No Ke Awāwa o Waimea! Greetings from Waimea Valley!

Our mission at Waimea Valley is to "Preserve and perpetuate the human, cultural, and natural resources of Waimea for generations through education and stewardship."

One of the ways we perpetuate Hawaiian culture is through sharing the knowledge of practitioners of various hana no'eau or art forms. These art forms have descended from practices of the everyday lives of our kupuna or ancestors. What was once essential to daily life, has transformed into an important connection for the modern-day Hawaiian or Hawaiian-at-heart to the past. These everyday chores or jobs were a must to sustain daily life! Today they are seen and practiced as art forms and continue to be very important links to the past here in Hawaii Nei.

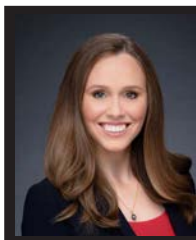
Some examples of these practices include mahi'ai (farmer), kapa making (clothing), ulana lauhala or launiu (weaving lauhala or coconut fronds), la'au lapa'au (healing with herbs), lomilomi (healing massage), mea kaula (weaponry), mea lei (lei making), lawai'a (fisherman, fishing), and hale (house building).

Waimea Valley, also known as the "Valley of the Priests", carries a history of having Kahuna Nui (High

Priests) residing in or presiding over the Valley. Kahuna Nui were also highly skilled individuals who were experts in many arts.

It is on this foundation that we continue to build our hui (group or team) of Nā Po'e Hana No'eau a Nā Ka'e'a'e'a, the Artists and Experts Program. Our program has recently been expanded to include experts or knowledgeable individuals in various types of flora who would like to provide tours or mini talks on a garden such as Hawaiian plants, canoe plants or any of our many exotic gardens.

If you would like to join our program or learn more about it, please visit our website at waimeavalley.net



**Representative
Lauren
Matsumoto
Serving You in District 45**

Aloha Friends and Neighbors!

First and foremost, I want to say a heartfelt congratulations to all of the seniors of Waiialua High and Intermediate School! I hope you are incredibly proud of yourselves! Not only for your hard work and accomplishments, but you should be extra proud of completing your high school education during these difficult times. While you might not have had the traditional graduation ceremony due to the pandemic, you will have the graduation year that no one will ever forget! I still remember so many of you at your 6th grade graduation! It has been a pleasure to see how much you have grown! I look forward to seeing all you will accomplish in the future!

I also want to say congratulations to the 6th grade class of Waiialua Elementary! I had such a great time at your drive-thru graduation ceremony celebrating all that you have worked for! I would like to give a special congratulations to the recipients of the Hawaii State House of Representatives Person of Character Award: Princess Faith Ines, Troy Lehmkuhl, Sadie Yoshizu, Shylee Agena, Hoku Hill, and Keoua Lum. Each of these students were chosen by their teachers for exhibiting the six pillars of character; citizenship, trustworthiness, respect, responsibility, fairness, and caring. I was able to present these outstanding students with a Legislative Certificate from the Hawaii State Capitol at their graduation to celebrate their accomplishments. To all of the amazing 6th graders, keep working hard and dedicate yourself to your education and character development; these things will help you achieve your dreams!


One of the top priorities of my office has always been to keep everyone informed on what is happening in the legislature and the community. The pandemic has made it even more clear that more frequent and timely communication is needed to keep you informed on the constant changes. I will still be sending traditional mail right to your door, however the budget I am allotted only allows for 4-5 pieces of mail for each person in the district per year. Additionally, traditional mail is often too slow in providing certain updates in a timely manner. For regular and time sensitive updates about legislation and issues that impact the community, please sign up for my e-newsletters on RepMatsumoto.com. You can also view updates on my capitol facebook page @ repmatsumoto.

Additionally, thank you to all who participated in our mid-session survey! It is important to me to have constant communication with the district to inform what legislation I introduce and how I vote. Your ideas, thoughts, and concerns about the most important issues facing our state and community are vital toward my job as your state legislator. I asked several questions about recreational marijuana, nurses performing abortions, minimum wage, state lottery, property tax and more. For a full analysis of the survey results, please visit RepMatsumoto.com. You will find the Survey Results page under the Information tab.

Please mark your calendars and join me for a District 45 Virtual Town Hall Meeting on June 24 at 6:30PM to discuss the 2021 legislative session and address community concerns. The Governor is now carefully considering each bill that passed the legislature to decide if it will be signed into law. Mahalo to those of you who reached out to my office to express your support or opposition to legislation this session. Thank you to those who formally submitted testimony. Your voice matters and is taken into account during our committee hearings. We will be able to discuss all of this and more at the Town Hall on June 24. For the zoom link please visit my website RepMatsumoto.com.

I want to assure you that my office and I are still diligently working on the issues surrounding Thompson Corner and the Waiialua Bridge closure. Both the City and County of Honolulu as well as the State are working on this issue, expediting the repairs on the bridge which will help alleviate traffic. We have taken all of the questions we have received from the community and asked the departments for answers. We have created a full list of frequently asked questions, and have posted them on RepMatsumoto.com.

As always, please feel free to contact me if you have questions or concerns about any happenings in our community. Call me at (808) 586-9490, email RepMatsumoto@capitol.hawaii.gov, or visit RepMatsumoto.com.



Congratulations!

to the alumni of Saint Michael School
who make-up this year's graduating
high school and college classes!

EIGHTH GRADE CLASS OF 2021

<i>Mariah Carter</i>	<i>Stella Stancoven</i>
<i>Ciana Cubi</i>	<i>Ezykiel Lawrence Sugui</i>
<i>Salome Heiderscheidt</i>	<i>Madee Anne Villanueva</i>
<i>Nateli Kikuchi</i>	<i>Kairry-Kierra Waiwaiole</i>

An important message to our customers

Hawaiian Electric is here to keep you connected



It's time to take action

The moratorium on disconnections for nonpayment ended **May 31, 2021**. If your account is past due, now is the time to choose a payment schedule that meets your needs. Customers on a payment plan are not subject to disconnection. Sign up now for an interest-free payment arrangement. To review options and submit a request, go to hawaiianelectric.com/paymentarrangement.

What to expect

If your account is past due and we do not hear from you, we may automatically roll your balance into a 12-month payment plan with your July 2021 bill so you can avoid disconnection. **Your July bill will be larger than normal because it will include the current charges plus the installment amount.** You can opt out of the plan or transition to a more tailored plan to fit your needs at any time by going to hawaiianelectric.com/COVID19.

What happens if I can't pay?

If you do not pay the amount due while on a payment plan, it may trigger collection activity and your service may be disconnected. Please contact us right away if you need assistance or to make an adjustment to your arrangement. We're here to help but we can't help if we don't hear from you.

Is there assistance available?

Yes, if you are experiencing financial hardship related to the COVID-19 pandemic, we encourage you to seek government and nonprofit agency assistance. While Hawaiian Electric does not administer these programs we work with them. See a listing of resources at hawaiianelectric.com/COVID19.

Watch out for scams

Scammers will try to scare you into thinking that your power is about to be shut off. Don't be fooled. **Hawaiian Electric NEVER threatens immediate disconnection and NEVER asks for payment with gift cards, Cash App, Bitcoin or prepaid debit cards.** Ignore calls, texts, emails or in-person collectors who say you'll be immediately disconnected if you don't pay.



**Hawaiian
Electric**

Adjusting to Change: Tips for Graduates and Everyone Else

Thomas Robertson, LCSW

This time of year is full of excitement and celebration in our community as our children and students achieve the important milestone of completing their high school education. The graduation ceremony is called commencement for a reason— it is the beginning of a new phase in life. For our graduates, this could mean getting ready for upcoming opportunities at college or the chance to enter the workforce. This might even mean leaving home for the first time, a reality that is scary for young adults and parents alike. Changes like these can be hard for everyone involved.

The truth is, during our life we are constantly going through change; it is inevitable. Most of the time change represents opportunities for new growth and can be refreshing and reinvigorating. However, even good changes can be anxiety-inducing as we grapple with future unknowns. For this reason, we may find that we resist change, and might even self-sabotage good changes in life.

How do we adjust to change? The Hawaiian word “Imua” means to move forward or to advance. I would like to suggest three strengths-based approaches to moving forward in our always-changing life. These approaches may work best if we have already accepted the change.

- **Develop your problem-solving skills.** We all have an innate ability to problem-solve. We can see this in action when we observe babies as they struggle with learning how to adapt to their environment. By further developing our problem-solving skills we get better at the process of adjusting as things come our way. Developing these skills is a lifelong process.

- **Think “big picture.”** On the other hand, sometimes we need to pull back and put things into perspective. What strengths do we have that can help fit changes into the big picture? This requires us to willingly reframe our thinking to make changes work.

- **Be flexible.** As a child, I was always curious about what made coconut trees so strong even though they are so bendy. Later I learned that it is their flexibility that makes them strong. Like a coconut tree in a heavy storm, abrupt changes can send us “to the breaking point.” This is exactly why finding creative ways to be flexible in life can keep us from going beyond the breaking point.

There are times in life, like losing a loved one, where we may understandably struggle to adjust. This can contribute to the very natural phenomena of grief. Other times we may have an unusually difficult time adjusting to other types of changes (for example, a career change). This may lead to something called an adjustment disorder.

If you are having trouble adjusting to important life changes, both the good and the not-so-good, you may benefit from talking with a medical or behavioral health professional to see what steps you can take to adjust and improve your quality of life. Help is out there waiting for you!

Ko‘olauloa Health Center
293-9231

*We accept everyone regardless of ability to pay.
Improving the quality of life for all. Imua!*



“To the class of 2021, congratulations on your well-deserved success!”
We wish you all the best!



“To all our Sunset Beach Elementary 6th graders: This has been a year like no other. We are so proud of your resiliency and hard work this school year. We know it has not been easy to follow all the covid19 guidelines here at school, but you did it! We want to say CONGRATULATIONS on your graduation! We wish you the best of luck as you move on to Intermediate School. Keep up the great work and GO SHARKS!” Principal Eliza Elkington

BEWARE OF NEW UTILITY SCAMS!

**Scammers are more aggressive than ever before,
threatening immediate disconnection
unless you make payments with prepaid debit cards.**

What Hawaiian Electric will NEVER do:

- ◆ Send a disconnection notice via text
- ◆ Ask for private information via email
- ◆ Go door-to-door collecting past due invoices
- ◆ Threaten immediate disconnection of power

Don't be fooled:



Some scammers copy your utility's caller ID
by using available technology



Ignore requests for immediate payments
via prepaid debit cards, gift cards, Cash App or Bitcoin



Never provide or confirm your personal information
such as Social Security or card numbers

REPORT THE SCAM!

Call Hawaiian Electric at **808-548-7311**. Or to report online and for more tips, go to **hawaiianelectric.com/stopscams**



**Hawaiian
Electric**

UTILITIES UNITED
AGAINST SCAMS

TURTLE BAY FOUNDATION SCHOLARSHIP AWARDS

Congratulations to our award recipients!

'ILIMA SCHOLARS



KINSEY HIPPOLITE
Kahuku High & Intermediate School



DYLAN YADAO
Waialua High & Intermediate School



LEAH ACORDA
Kapi'olani Community College

NAUPAKA SCHOLARS



A'JA-FAITH GREENE
University of Hawai'i at Mānoa



AMBER IKALANI
Kamehameha Schools Kapālama



ANGEL CALARO
Waialua High & Intermediate School



ANNA LESĀ
Utah Valley University



ANNA STRAIN
Kahuku High & Intermediate School



CASSANDRA MILLER
Brigham Young University - Hawai'i



CHRISTOPHER WOLFERSBERGER
Kahuku High & Intermediate School



EMILY TSING
Kahuku High & Intermediate School



GENEVIEVE HART
Waialua High & Intermediate School



ISAAC RAMOS
Waialua High & Intermediate School



JAYA BELYEU
Hawai'i Pacific University



JENNY PETERS
Waialua High & Intermediate School



JONAH CICATKO
Kahuku High & Intermediate School



JORDAN ABREGANO
Brigham Young University - Hawai'i



KALAMELA LIUA
Kahuku High & Intermediate School



KAMUELA AKEO
University of Oregon



KANALOA KAPOLOLU
Waialua High & Intermediate School



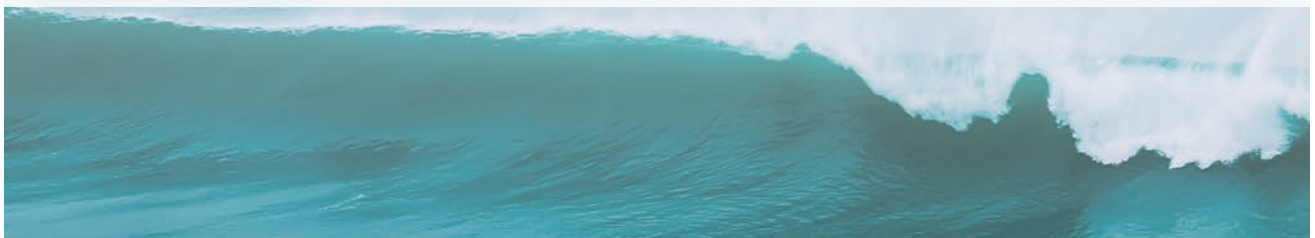
KARLY NIKORA
Brigham Young University - Hawai'i



KAYLA GRIGSBY
Brigham Young University



KEZIA BURGOYNE
Hawai'i Technology Academy



We are pleased to present the remarkable students who are receiving scholarships from the Turtle Bay Foundation for the 2021-2022 academic year. The Foundation is proud to support these individuals as they pursue higher education. CONGRATULATIONS, SCHOLARS!



TURTLE BAY

NAUPAKA SCHOLARS, CONTINUED



KIMIKO WONG
University of Utah



KONAAIHELE FERMANTEZ
Kahuku High & Intermediate School



KRISTI CHOI
Waialua High & Intermediate School



LEIAH NAEATA
Kahuku High & Intermediate School



LOKANA ENOS
Brigham Young University



MARY FONOMOANA
Kahuku High & Intermediate School



MEGAN SHANLEY
Kahuku High & Intermediate School



MINAMI PALMER
Brigham Young University - Hawai'i



MITCHELL ESTORES
Kamehameha Schools Kapālama



NAIA PULOTU
Kahuku High & Intermediate School



MARIE TAI HOOK
Kamehameha Schools Kapālama



NIKKY ZENA BALI
University of Hawai'i



NOAH ROBERT EVILE
University of Michigan



PETER-JOHN MATAIRA
Life University



QUINN OZOA
Waialua High & Intermediate School



SHEYLA TAI HOOK
Kamehameha Schools Kapālama



SIERRA BREWER
Maryknoll High School



SKY BERRY-WEISS
University of San Francisco



TA'ELE AH YOU
Kahuku High & Intermediate School



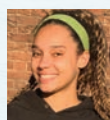
TEALANI WASSON
Kahuku High & Intermediate School



TRINITY OZOA
Waialua High & Intermediate School



VAVE NUI ADOLPHO
Timpview High School



VITORIA BYRNE
Rhode Island School of Design



WINVHER GARO
Leilehua High School



YOVELLA FABRO-DIZOL
Leilehua High School

ABOUT THE TURTLE BAY FOUNDATION

Turtle Bay Foundation is dedicated to enriching the communities of O'ahu's North Shore and Ko'olauloa region. To fulfill its mission of making one of the world's last great places even better, the Foundation provides education scholarships for deserving youth, job training opportunities for adults, and grants for environmental stewardship, historic and cultural preservation, healthy living through sports and recreation, and health care programs for aging residents, homeless, and substance abuse recovery.

Kahuku High School

Taele Ah You
Senior Class President

Edyn Tuliloa
Senior Class Vice President

Leina Napoleon
Senior Class Secretary

Irie Farley
Senior Class Treasurer

Tealani Wasson
Student Body
Government President

Emma Toleafoa
Student Body Government
Vice President of Clubs/Service

Emily Tsing
Student Body Government
VP/Activities & Publicity

Leina Carvalho
Student Body
Government Treasurer

Graduating Class of 2021

Aalona, Kalapana
Acoba, Kevin
Afualo, Mason
Afualo, Maya
Ah You, Taele
Ah You, Zion
Akeo, Jade
Alapa, Vendella
Aldrich, Annie
Alvarez, Angel
Amatore, Xander
Anderson, Anuhea
Anderson, Bay
Annandale, Keoki
Atuaia, Taylie-Earvin
Aveau, Sasha
Beck, Taylor
Blackhurst, Georjanna
Blake, Jannie
Bopp, Sage
Brown, Armondo
Brown, Hunter
Bruno, Christine Anela
Buckingham, Tyler
Carvalho, Leina
Chamberlain, Elijah
Chee, Lejend
Christensen, Seth
Cicatko, Jonah
Cocco, Ephraim
Coloma Suniga, Ian
Court, Daniel
Dayton-Carreira, Kaiona
del Rey, Katrina
Dewey, Bradley
Dias, Maria
Drummond, Caryssa-Marie
Eastwood, Jane
Edwards, Kamanaleo
Esera, Talia

Faagai, Tia
Faifili, Kealaulapoiuonalani
Farley, Irie
Farley, Ocean
Fermantez, Konaaihele
Fifita, Melalini
Filipo-Maiava, Tianna
Fiu, Iosua
Fonoimoana, Mary
Fonoimoana, Tupua
Foukimoana, Amelia
Geranio, Nicholas
Gongola Bueno, Jose
Griffiths, Sagan
Halemano, Justin
Hippolite, Kinsey
Iereneo-Leota, Taylor
Ignacio, Aniki
Johnson, Brody
Johnson, Brycelyn
Johnson, Thatcher
Johnston, Justina
Jones, Kingston
Jordan, Stephanie
Kaanapu, Kaline
Kahala, Haevinn
Kahalepuna, Kaimana
Kaio, Papanuumealani
Kaio, Peleioholani
Kamai, Justus
Kauvaka, Nephi
Keil, Adrian
Kenese, Lauanaiah-Sefiki
Keoho, Alexis
Kester, Isabella
Kimball, Samuel
Kinzer, Ashley
LaPenes, Ryan
Larson, Pamela
Leota, Amberlynn

Lewis, Salome
Liua, Kalamela
Lolotai-Kai, Kaizen
Lopez, Jacob
Lopez, Tanielia
Maghanoy, Leila Sharee
Maiava, Meg
Mailo, Ashley-Jane
Makaafi, Iunita
Manumaleuna, Mamoe
Marasco, Karly
Marasco, Tyson
Matagi, Zealand
Matagi-Magalei, Ezias
McCarrey, Eve
McConnell, Madigan
McIntosh, Akaia-Koni
Mckee, Jon
Muaina, Positoni
Naeata, Leah
Naeole, Mitchell
Naeole, Naone
Nahoopii, Dasia
Nakaahiki-Bourgeois, Kade
Nakauciri, Loren
Napoleon, Leina
Nawahine, Noela
Niu II, David
Nunes, Ulani
Nunuha-Kawamoto, Shane
Orr, Melanie
Orton, Jaz
Orton, Rocco
Padaca, Ava
Pasi, Tomasi
Patterson Keoho, Jollizza
Phung, Ammon
Piber-McCormick, Kashen
Piena, Vai
Pokipala, Halia

Pollister, Benjamin Wade
 Pollock, Kristalyn
 Pooi, Kalisi
 Prow, Riley
 Pruet, Naleo
 Pulotu, Naia
 Rackley, Joshua
 Rivera, Keahi
 Rodrigues, Titan
 Rodriguez, Elijah-Noah
 Sack, Mia
 Sadler, TeWakeroa
 Schwenke, Zion
 Scott Kauhane, Sage
 Seumanutafa, Serene
 Shanley, Megan
 Shaw, Mackenzie
 Sheffet, Elyas
 Smith, Jonathan
 Smith, Kayla
 Solis, Kahililani
 Sorensen, Kainoa-O-Kawaa
 Spencer, Quentin
 Stevenson, Kaylee
 Strain, Anna
 Taea, Kelcie
 Taione, Melchizedek-Lawrence
 Tanaka, Chikara
 Tangaro, Emeris

Tangaro, Kahealani
 Taukolo, Siosifa
 Taumoepeau, Viliami
 Tei, Palepoi
 Tejada, Michael
 Timmons, Daven
 Timon, Motira
 Tito, Jack
 Toelupe, Jaddy
 Toelupe, Kekaimalino
 Toleafoa, Emma
 Tonga, Elisiva
 Tonga, Enese
 Toomalatai, Chayse
 Torres,
 Mealofamailelagifololelaiititi
 Touli, Tuaoloa
 Tsing, Emily
 Tuala, Renee
 Tueller, Olivia
 Tuliloa, Edyn
 Tupou, Chrysanthemum
 Tupuola, Laisa
 Ulima, Jayden Elizabeth
 Vaimoui, Viliami
 Vierra, Journey
 Vimahi, Loulena
 Vuniwai Turagavou, Mere
 Wade, Daniel

Waite, Rachael
 Wasson, Tealani
 Watkins, David
 Williams, Sanai
 Wolfersberger, Christopher
 Wolsey, Kayla
 Wond, Kaiala
 Wood, Abbygail
 Workman, Isaac
 Wu, Samuel
 Yadao, Charles
 Yadao, Makoa
 Yagodich, Laakeamaikalani
 Yalimaiwai, Skyler
 Yergensen, Emma
 York, Marley



Ride that wave of the future!

Congratulations Class of 2021 !

Waialua and Kahuku High Schools

"Best wishes and success for all
 your future endeavors!"

Senator Gil Riviere



GRADUATING CLASS OF 2021

Anthony Miyataki
President

Dylan Yadao
Vice President

Jaedyn Malasig
Secretary

Leila Domingo
Treasurer

Maile Andrada
Historian

Jasmin Lacar
Promotions Chair

Kade Dellatan
Promotions Chair

Katiana Abad
Media Chair

Katiana Abad
San Zai Agdeppa
Kaleihiwahiwaonapiolani Alam-
eida
Amanda Alton*
Maile Andrada*
Kainoa Antony
Hunter Apau
Nohealani Apuakehau-Smith
Caitlyn Arango*
Matthew Asano
ArieAnn Avilla-Dabin
Paytron Avrett
Pedro Ballon
James Bareng
Erik Bell
Colin Bennett
Azia Bjur
Taumana Caicedo Rapu*
Aurora Capes
Kristi Choi*
Lana Dahlin
Randen Dela Cruz
Kade Aukahi Dellatan
Leila Domingo
Joshua Duran
Jordan Egdamin
Jodi-Ann Fallas*
Kela Fiegle*
Nainoa Fierro
Whyatt Fujiwaki-Moniz
Joshua Guillory-Suan
Alwyn Jeff Guzman
Genevieve Hart
Thomas Heck
Audrey Hewitt
Alexia Ho
Jayla Marie Hobar

Kai Hoekstra
Louis Jeffers-Fabro
Hassan Jubran
Kanaloa Kapololu
Mateo Karp
Indie Kauanui
Talen Keao
Jasmin-Faith Lacar*
Nia Lacuesta*
Robyn Lacuesta*
Micah Langamin
Zoey Lawrence
Aries Lawrence
Justin Lorenzo
Isaiah Lorenzo
Leilani Ma Sun
Kayde Mahuka
Jaedyn Malasig*
Gavin McIntosh
Anthony Miyataki
Tevin Moniz
Emma O'Leary*
Kaile Oleyar*
Kaaumoana Otteman
Trinity Ozoa*
Quinn Ozoa*
Alai Paikai*
Leslie Lae Pascua
Roosebelt-Thomas Pascual Jr.
Kyle Marie Petalver
Jenny Peters*
John Phillips V
Roland Ramelb
Isaac Ramos
Kaula Remigio
Brayden Rice
Haldjon Rioca
Janine Riviere

Mark Randel Saturnino
Ellie Segal
Shylah-Kapika Segundo-Ferolino
Faye Clarise Serra
Michael Stovall-Roberts
Amanda Tamayo
Chaden Teixeira
Lilianna Tudor*
Hunter Valencia*
Cyprian Valmoja-Galbiso
Brianna Vazquez
Leah Ventura
Keenan Wiech
Samuel Wirtz
Kaylah Woods
Dylan Yadao
Lois Mulien Zara

Congratulations!
This year nineteen of
our graduating seniors ()*
earned the highest distinction of
Valedictorian (20% of the class!)
-Principal Christine Alexander



Small Steps for Pupukea Bike Path

The popular bike path that extends from Three Tables to Sunset Point neighborhood is known as Ke Ala Pupukea Bike Path. This is designated a linear park and is managed by Honolulu City and County Department of Parks and Recreation, known as DPR. DPR is responsible for coordinating all maintenance and repair of the bike path to keep it in a safe and usable condition.

Unfortunately, there has been a lack of maintenance or repair during the last five years and the path has become unsafe and difficult to navigate for walkers and bike riders. The North Shore Outdoor Circle (NSOC), a non-profit citizen group, has been the community representative since the path's inception. In the past six months the NSOC has met three times with DPR and other City and County departments to schedule maintenance and repair of the path. With the help of the new DPR Director, Laura Thielen, maintenance and repair has begun. Extensive canopy and tree trimming was completed in early May and limited asphalt repair of rough and root damaged areas will begin in June. DPR has also begun the planning process for a long term reconstruction plan of the entire bike path.

HPD has also stepped up Code Enforcement on the path and will continue to issue citations for GREEN WASTE DUMPING and MOTOR VEHICLES

(E-bikes, mopeds, scooters, golf carts, autos) using or parked on the path. Only Manual Pedaled bikes and Pedestrians are permitted on the bike path. DPR will not pick up green waste.

How can you help?

- Report Dumping and Motor Vehicle Violators by calling 911 (it's anonymous)
- Report Asphalt Repair by filling out form at 311.hnl.info
- All other concerns please contact csayers@honolulu.gov
- Be a courteous user: Stay to the right-Announce yourself when passing-Ride and walk single file

Enjoy your path!



Congratulations

WAIALUA HIGH AND INTERMEDIATE GRADUATES!



Class of 2021, in times of adversity you have shown resilience which will help you in all of your future endeavors. I am so proud of all of you!

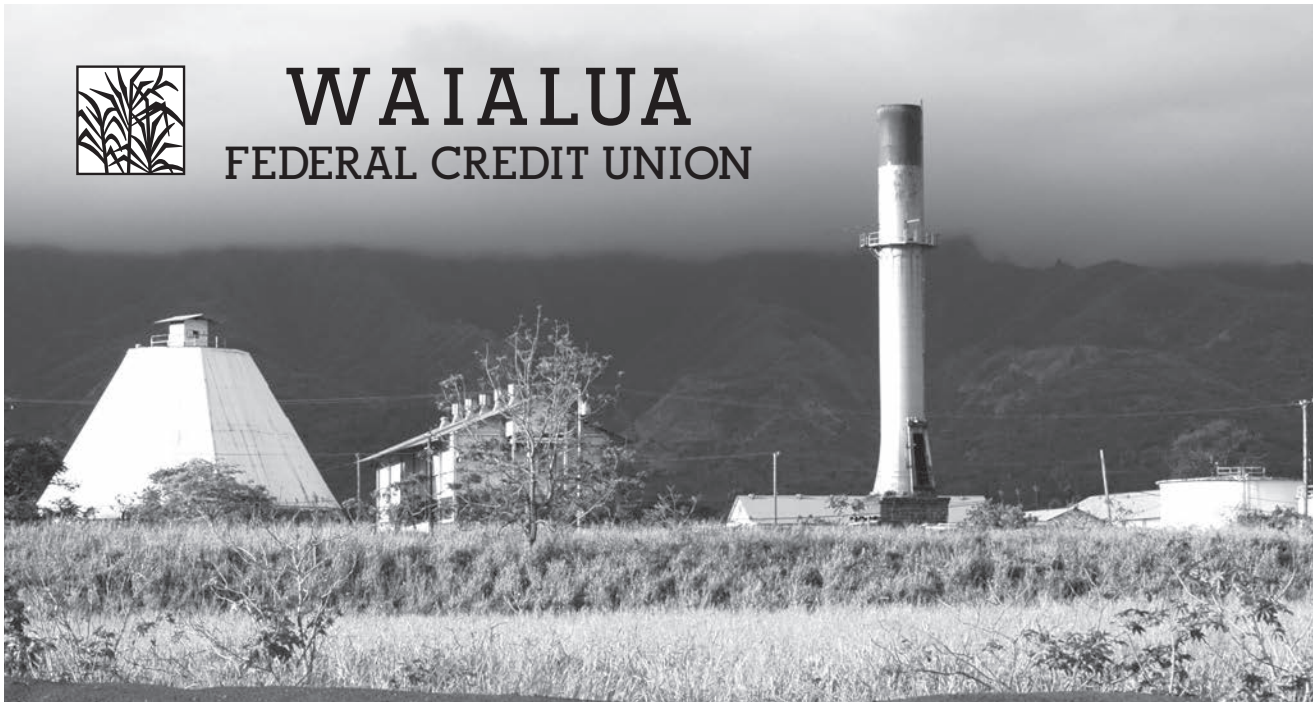
Lauren Cheape Matsumoto



REPRESENTATIVE LAUREN CHEAPE MATSUMOTO



WAIALUA FEDERAL CREDIT UNION



Serving the North Shore Community

www.waialuafcu.com
(808) 637-5980

- SAVINGS
- CHECKING
- LOANS

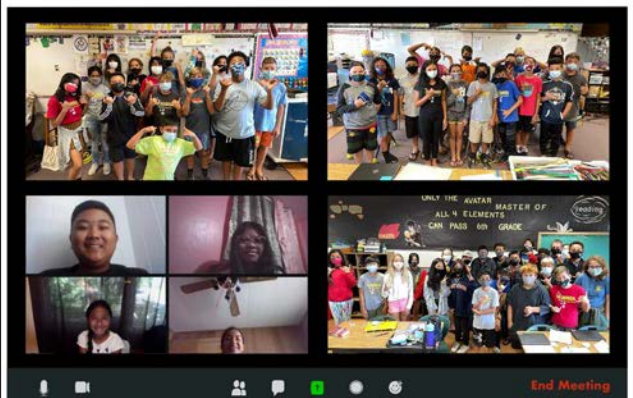


Congratulations Waialua and Kahuku Class of 2021

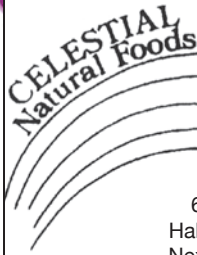
It has been a challenging year for all of you but your courage and perseverance saw you through to this moment. Remember that

“We do not need magic to change the world, we carry all the power we need inside ourselves already: we have the power to imagine better.”
– JK Rowling

Congratulations class of 2021



BULLETIN BOARD



Featuring the largest selection of certified organic produce on the North Shore. No panic...ours is organic. Open 7 days. Mon.-Sat. 9am-7pm. Sun. 9am-5pm

66-445 Kam. Hwy
Haleiwa, Hawaii 96712
Next to the Post Office
808-637-6729 • 808-637-1922 fax

LTC Laie Trucking Company, LTD

* Ready Mix Concrete * Recycled Aggregates
* Pump Service * Hauling * Equipment Rental

PH: (808) 293-8710
P.O Box 121
Hau'ula, HI 96717

PH: (808) 293-1296
FAX: (808) 293-2890

laietrucking@hawaiiantel.net

"A LOCAL COMPANY, BUILDING A LOCAL COMMUNITY"

Take a moment to remember Harold "Murphy" Andersen



A long time Haleiwa resident
And Ambassador of Aloha.



You might've seen him washing windows around town,
But if you had the chance to chat,
you know that what he did best, was lift spirits.

Rest in Peace



Pupukea Print Shop

**PRINTING SERVICES
CUSTOM APPAREL
SHIRTS, VINYL DECALS**

no minimum orders
perfect for small businesses
email for a quote

@PUPUKEAPRINT
PUPUKEAPRINT@GMAIL.COM

TILE INSTALLATION

Lope Fuentes Lic# 31228
lope.fuentes@gmail.com
808-276-2257
www.fuentesstoneandtile.com

A Blessing to Brighten Life's Path... REFLECTION



You are a Child of God. It is important to allocate time and attention where God guides your mind, body, and spirit. You are divinely and wonderfully created to contribute unique and wonderful gifts to others by being Y-O-U. Prioritize the calling/s God has ordained for your life and take a new step forward starting today to celebrate the path and possibilities our Creator has placed in your heart. God bless you, always.

Munden Design & Build

Lic.#BC19632

Design • Plans • Permits • Construction
Additions & New Residences
808 391-8616

Providing quality work since 1978

PARADISE

"IF YOU BUILD IT, WE WILL PLUMB"

PLUMBING

New Construction, Repair, Remodels

Dale Christensen C-29856 (808) 368-1473



NORTH SHORE FOOD DELIVERY

Let North Shore's original delivery service bring your next meal to your doorstep!
Thursday-Saturday evenings
Order online: dudefoodhi.com



MANA + PUA
NOW OPEN

CALIFORNIA VINEYARDS
+
HAWAIIAN ROOTS

Old Plantation Shops
66-526 Kamehameha Hwy

Open Daily 9am
Espresso Bar, Eatery, Winery
www.Manapua.wine

Three Cheers for Teachers!

By Kezia Burgoyne

Happy graduation season! From in-person to virtual to hybrid school and back around again, this year has been . . . unexpected. As a current high school senior, I admire the people behind the shining faces of graduates: the inspirers, the innovators, the educators – the teachers. Teachers are hands-down some of the most fantastic members of the North Shore community, and have paved the way for students to succeed despite unprecedented circumstances. Below are the stories of two fantastic North Shore teachers, representing a multitude of educators who have adapted to pandemic-teaching with astounding wisdom and resilience.

Michelle Cazimero, head of the math department at Waialua High School, described the initial shock of her first all-virtual classroom as “rough to say the least.” Despite this, Cazimero powered through this school year like a pro. She describes, “In the life of a teacher who really cares . . . it’s all about sucking it up, adapting, and going into overdrive to learn what you can to prepare for the first day, then the second, the third, and . . . so on and so forth all while dynamics continue to change.” Cazimero cares about her students beyond what is taught in the classroom, and reports, “The most rewarding part about being a teacher is . . . making connections, seeing my students’ growth over the years, and knowing that they will be OK once they get out into the real world.” As a champion of setbacks and unexpectedness herself, Cazimero encourages graduating classes to “keep on keeping on no matter how tough situations can be and you will be just fine. It’s the tough challenges in life that always make us stronger and better equipped to become positive, contributing members of society.”

Kaleolani Hanohano, a social studies teacher at Kahuku High School, has adapted to the pandemic with grace and foresight. She reports, “I was concerned already [about the pandemic] in November. . . . [In mid February,] I was already planning curriculum.” Because of her foresight and ability to adapt, Hanohano co-developed the Kupa’a Collective, a curriculum that empowers “Hawaii’s communities for bright, healthy, and resilient tomorrows.” This curriculum is now used across schools statewide. Hanohano describes her role as a teacher as “very sacred because [students] are . . . going to be future leaders - future mothers and fathers - of our community.” She continues, “My aim is to make my haumana - my students - the experts. So when they go home they champion whatever position that they and their families are in.”

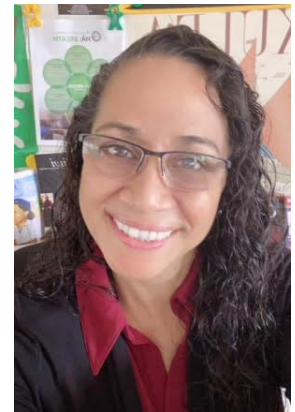
This graduation season, I, along with the class of 2021, am grateful for teachers across the North Shore and beyond who have conquered this school year with amazing strength and resilience. Accord-

ing to current high school senior Emma O’Leary, “Teachers who push through [challenges show] how strong of a people they are. And it is important to the kids; It shows that they’re not going to let [setbacks] get to them.”

Teachers, your work is important, valued, and appreciated. Because of you, the class of 2021 is wiser, more resilient, and better prepared to face life’s challenges. Congratulations!



Michelle Cazimero



Kaleo Hanohano



CONGRATULATIONS

CLASS OF 2021

best wishes for all your tomorrows



KAHUKU PUBLIC/SCHOOL LIBRARY



Coming soon!

NĀ PILI WAI

SUMMER PROGRAM

Celebrating ʻāina momona with Waiālua



June 8-12
 June 15-19
 June 22-26

July 6-10
 July 13-17
 July 20-24

One week long sessions

Tuesday thru Saturday • 8am to 2pm*

*Saturday 9am to 2pm

For all **3rd thru 8th** grade students

Sign up for free on our website >>

Nā Pili Wai is a program of the Mālama Loko Ea Foundation with generous financial support from Kamehameha Schools



‘OHANA WORK DAYS

Get outside and join us!

EVERY SATURDAY
 9am-11am

HELP RESTORE LOKO EA FISHPOND

65-540
 Kamehameha Hwy
 Haleiwa 96712

More info + sign ups online @ lokoea.org
 Limited space each week.



ULUHĀHĀLOA

An Aloha ʻĀina afterschool program.
Become a kiaʻi loko at Loko Ea!

For all **4th-6th** graders

Every **Wednesday** this month!
2:30 PM - 5:00 PM

For more information & sign ups visit:
www.lokoea.org (under LEARN tab)

For additional questions
email: jacob@lokoea.org

Registration still open. **Sign up today!**

Aloha Kakahiaka Kākou,

Here is our manaʻo for the week.
E ulu aʻe kākou i ka lani, a ulu iho ke ʻaʻa i ka ʻāina.

I ka nānā no a ʻike

By observing, one learns
pg. 129, proverb 1186

Sometimes, questions can be answered through being patient and opening up your senses. The best lessons and ʻike are taught by someone who doesn't require a soapbox, but a good space to perform his/her art. It is ultimately up to us to absorb that knowledge by allowing them to share with little to no interruptions.

Take a little extra time to listen and watch those things that fill the world around you. Let others take more time to share their ʻike, humbling yourself with patience and then with opportunity. Our strength comes from the diversity of our knowledge, and that happens by filling our ʻumeke with water that comes from multiple springs.

Ke Aloha, Makua - makualii@lokoea.org



CLASSIFIEDS

The North Shore News is published every other Wednesday and mailed free of charge to all North Shore homes and businesses.

PRESS RELEASE POLICY: Submit press releases, mail or email to Editor, North Shore News, P.O. Box 117, Haleiwa, HI 96712. Please type your releases and keep them shorter than 200 words unless they are of an unusual news interest. Releases should be viable news stories and are published on a **space available basis only**, with priority given to those received in our office first. You may attach photos. We are not responsible for the return of any photos. All materials are submitted at owner's risk. We reserve the right to edit and/or refuse all submissions including advertising.

EDITORIAL POLICY: We welcome articles and letters from our readers. Letters to the Editor are published on a space available basis only and preference is given to shortness of length, and quality of content. We prefer to run not more than one letter, per person, per 6 month period. Letters subject to edit.

Views expressed by our contributing writers and advertisers do not necessarily reflect the view of the management and staff of the North Shore News. All rights reserved. Reproduction in whole or part without permission is prohibited. © 2021.

Editor & Classifieds

Linda Seyler

Typography

Downtown General Store

Contributing Writers

Betty Depolito

State Representative Lauren Matsumoto

Senator Gil Riviere

Councilmember Heidi Tsuneyoshi

Kezia Burgoyne

Richard Sterman

Photography

Banzai Productions



Please recycle this newspaper.

SERVICES

SHORE ELECTRICAL SERVICE

New Const-Remodels
638-0049/Lic#C20777

Andres Plumbing

All your plumbing needs
808-256-7337 Lic#C24500

Sunrise Asphalt Services, LLC

For all your driveway, pothole and parking lot needs.
Licensed and Insured.
Lic# 37527
(808)754-9928
Sunriseasphaltservices.com

ALOHA COMPUTER

PC/MAC Repair/Virus Removal
MOBILE COMPUTER REPAIR SERVICE
372-2667

CS EuroCars Kapolei Mercedes Repair Shop

with low labor rates
ASE Certified Technician
27 years experience
2116 Lauuliwili St. Unit 104F
Kapolei, HI 96707 - Under New mgmt.
808-682-1957

ANGELS PLUMBING

Repairs
Remodeling
Renovation
638-7878
Lic. #C12004



DOG/CAT NAIL TRIMMING

At your home- only \$20.
Call 808-388-5336

IG: @nsnews_haleiwa

GERMAN CAR SERVICE

Professional-Qualified Technician
Call Gary
637-6800

HARVEY'S TOWING LLC

24 hr Towing Service
Lockouts, Jumpstarts & Recovery. Specializing in opening locked car doors.
Call anytime 478-0333

ESTRADA'S WE HAUL 'EM

Garbage-Rubbish-Trash
Call Rick 808-216-9419

BUSINESS SERVICES CENTER

Fast & Convenient Copy, Fax, Scan, Computer/Internet, Laminate, & More



Across from the Haleiwa Post Office

637-4558 • gonorthshore.org
#gonorthshore

- ◆ Rain Gutter Clean Out
- ◆ Pressure/Scrubbing
- ◆ Window Cleaning
- ◆ Auto Detailing

Ku's Aloha Cleaning
341-1656

CC SALVAGE

No job too small, we haul it all!
Island Wide Services
24/7/365
Wanted Junk Car
808-457-2103

HOT YOGA NORTH SHORE

IN-STUDIO classes everyday!

Sign up and book online.
www.hotyogannorthshore.com

North Shore Smoke Shop

Est. 2007
Covid Hours:
Tues-Sun 11am - 5pm
Closed Mon (temporary)
66-521 Kam Hwy, Ste B
Haleiwa 637-1750

Radiant Skin Care & Waxing

Aynjul Benigno
Licensed Esthetician
Call/Text 808-222-8124
radiant skincare and waxing.com

Ka'ala Healing Arts
66-216 Farrington Hwy #200B
Waialua, HI 96791

ABCARDetailing

Auto detailing and Vinyl Wrapping
Joe (808)492-2214

Honey Bee Hive

Swarm Removal and Relocation
(808) 724-9966

OAHU SPCA Wahiawa Veterinary Clinic and Hospital

Tuesday-Saturday
By appointment
(808) 754-1519

HOW TO CONTACT THE NORTH SHORE NEWS

Letters to the Editor, and other items submitted for publication consideration may be sent to us via:

MAIL: P.O. Box 117, Hale'iwa, HI 96712

E-MAIL: NSNHaleiwa@gmail.com

NSN4Linda@gmail.com

PHONE: (808) 780-8037

www.northshorenews.com

CLASSIFIED ADS

Next Issue - June 30, 2021
Deadline Date - June 18, 2021

Would you like to receive the North Shore News via email in color!
 Just send us a message at:
 NSNHaleiwa@gmail.com

OFF da ISLAND
 Are you leaving Oahu on vacation or business? Do you live on a neighbor island, the mainland or foreign country and subscribe to the North Shore News? Send us a photo of someone in front of a sign or landmark holding a copy of the NSN. Email your photo along with the person or persons' name, community of residence, contact info and photo location to: NSNHaleiwa@gmail.com.

Classified Ad Rates
 3 lines (min.) \$18.89
 4 lines \$25.13
 5 lines \$32.45
 1" Box Ad \$41.88
 (27 characters in each line)
 Include your contact information.
 *Ads can be text, or emailed.
 We reserve the right to refuse any advertisement with a full refund.
 (808) 780-8037 • NSNHaleiwa@gmail.com

FREE ADS
 Garage & Yard Sales,
 Reunions, Lost & Found.
 Email ad to:
 NSNHaleiwa@gmail.com



Marianne Abrigo, Properties
 Specializing in -
 North Shore
 Real Estate
 Ask for our list of available properties and/or a free market analysis.
Marianne M. Abrigo
 "Realtor since 1974"
 Office 637-3511
 Fax 637-0777
 Email mabrigo222@aol.com

HELP WANTED

Pet Care Professional
 w/ Grooming Skills
 Salary Neg. References required. Call for an appt.
 808-638-7073

Household Help
 Beachfront Estate
 16 hours per week
 808-637-0808

North Shore Chamber of Commerce is looking for volunteers to help with our Visitor Center sales and services. 3 hour shifts, Monday through Friday are available. Come be part of our team, helping the North Shore be a better place to live, work, and play!

Groundskeepers Wanted
 Full Time- 40 hrs per week
 Benefits Included
 \$16-\$18 /hr
 Experienced Preferred
 Call (808) 838-1202

GIOVANNI'S SHRIMP TRUCK NOW HIRING!
 Starting pay \$15 an hour plus benefits.
 Call **293-1839** or apply at the Kahuku location
 56-505 Kam Hwy, Kahuku

FOR RENT

TABLES & CHAIRS
 Call North Shore News
 780-8037
 All proceeds go to the North Shore Food Bank

MISCELLANEOUS

POTHoles ALERT & REPORT
 State Owned Roads (e.g., Kam Hwy) **536-7852**
 City Owned Roads (e.g., KeNui/Pupukea Rd) **768-7777**

North Shore Serenity AFG (Al-anon Family Group) is still meeting Wednesdays at 6:30 pm, but for now it is via Zoom. The Meeting ID is 847 8326 6578, and the password is 809980. We plan to return to St. Michael's Church when COVID restrictions are lifted, but that won't be for awhile.

Haleiwa Jodo Mission
 Virtual Buddhist Services
 Search "Koji Ezaki" on YouTube

Sunset Beach Christian Church Food Bank
 Every Tuesday
 12 - 2pm

For vaccine information:
www.HawaiiCovid19.com/vaccine

PURPLE VAN FOOD BOXES
 If anyone wants or needs a food box we can help and deliver.
 Please call 808-638-9627

NORTH SHORE FOOD BANK DISTRIBUTION DATES
 at Kaiaka Bay Beach Park starts at 12 noon
Wednesday, June 2
 -Please come if you need assistance with housing (IHS) or medical (HOME Project)
Wednesday, June 16
Wednesday, July 7
Wednesday, July 21
 For information and donations Call 780-8037

"Be a Sport. Donate Blood"
 June 1 - August 7 campaign will help patients and Special Olympics Hawaii Athletes with sports equipment and PPE. For information BBH.org

CAR WASH
Saturday, June 26
 at WCA, 8:30am-1pm
 All proceeds will go to Operation: Backpack & NS Food Bank. We need volunteers!! Call Linda at 780-8037 for info.

Hawai'i Statewide Marine Animal Stranding, Entanglement, and Reporting Hotline
Includes stranded/injured sea turtles, monk seals, dolphins, and whales.
Phone: (888) 256-9840

A Rotary Opportunity
 The Rotary Club of Wahiawa-Waiialua supported by Rotary District 5000 (Hawaii) is looking for 15-20 dedicated business professionals to start a club in the North Shore area. Rotary International provides opportunity for service within your own community, nationally, and internationally. These opportunities are endless and broaden your reach in making a difference in millions of lives!
 For more information, please contact Geoff Horvath, gjhorvath1@hawaiiantel.net or 808-436-7425. Please visit www.rotary.org

City to suspend mail-in option for seniors renewing a driver's license.
 The mail-in option will no longer be an option for motorists age 72 years and older effective June 1, 2021.
 Appointments recommended.
honolulu.gov/csd

Hawaii Polo 2021 Season Grand Opening
 Sunday, June 6, 2021
 Gates open at 11am
 Start time 2pm

Walgreen's Wahiawa
 Free Covid Testing
www.walgreens/covid19

North Shore Food Bank
 IG @nsfoodbank



Healthy patients from the inside
Out Patient Services

Cardiopulmonary

- Echocardiogram (ECHO)
 - Electrocardiogram (EKG)
 - Electroencephalogram (EEG)
 - Pulmonary Function Test
 - Treadmill Stress Test
 - Holter Monitor
- All services are available on one floor.*



Diagnostic Imaging

- Bone Density (DEXA Scan)
 - Computed Tomography (CT)
 - Mammography (3D offered)
 - Nuclear Medicine
 - Ultrasound
 - X-Ray
- Walk ins are available for some procedures.*



Laboratory

- General laboratory
 - Phlebotomy services
 - Transfusion services
- Walk ins are welcome.*

Rehabilitation

- Physical Therapy (Orthopedic, Neurology, Balance/Vestibular, Sports)
 - Occupation Therapy (ADLs, Hand)
 - Speech Therapy (VitalStim, Modified Barium Swallow Study)
- Come visit us in our new & expanded clinic.*



For your safety and the safety of others, **Wahiawa General Hospital** has implemented CDC safety recommendations which includes screening questions and temperature checks upon entering, face mask, social distancing, and proper cleaning techniques after every use to name a few.