



“E Ala Na Moku Kai Liloloa”

In This Issue:

**Ke Ala Pupukea Bike Path
Safety Improvements**
Page 4

**North Shore Sustainable
Communities Plan**
Page 11

**Blood Bank Hawaii
Fight Covid With Covid**
Page 16



NORTH SHORE NEWS February 10, 2021 VOLUME 38, NUMBER 1



North Shore Food Bank and Turtle Bay Resort Host Food Drive

In the spirit of aloha, the North Shore community banded together to support one another during these challenging times by hosting a food drive. This grass-roots initiative was organized by the North Shore Food Bank in partnership with Turtle Bay Resort and with the support of the

Hawaii Foodbank and Aloha Harvest.

On January 27, volunteers from the resort and the NSFb handed out more than 17,000 pounds of food to more than 830 community members during the drive-through event at Turtle Bay Resort.

“With each car’s arrival, we saw plenty of happy faces and people expressing their heartfelt gratitude for the support,” said Kiele Muraco, a Turtle Bay Resort team member and food drive volunteer. “It’s amazing to see these organizations come together and give back to our North Shore ‘ohana who continue to be impacted by the pandemic.”

The event was held to support Turtle Bay employees and North Shore families impacted by the ongoing COVID-pandemic.

PRSRT STD
 ECRWSS
 U.S. POSTAGE
 PAID
 HONOLULU, HI
 PERMIT NO. 1479

*****ECRWSSEDDM****

RESIDENTIAL CUSTOMER

NORTH SHORE FOOD BANK

IG:@nsfoodbank
Sponsors: Hawaii Food Bank
& Aloha Harvest

DISTRIBUTION UPDATE

at Kaiaka Bay Beach Park

Wednesday, February 10, 12 noon
Pick-Up Senior Boxes

Wednesday, February 17, 12 noon
w/ Malama Loko Ea

Wednesday, March 3, 12 noon

Wednesday, March 17, 12 noon



For more information and
donations contact :
Linda (808) 780-8037



North Shore Service Center

The North Shore Service Center will be joining the North Shore Food Bank at Kaiaka Bay Beach Park on the 1st & 3rd Wednesday of the month. Please visit us if you need assistance.

- Institute for Human Services (IHS)
 - Housing and Outreach
 - H.O.M.E. Project
 - *Homeless Healthcare
 - Veterans Affairs
 - Veteran Outreach Services
- DOE Central District Homeless Liasion
- Team WorkHawaii

*the H.O.M.E. Project
mobile office will be parked across the Kaiaka Bay Beach Park entrance at the Hale'iwa Project property

6% Alternative 36-MONTH TERM

- \$50,000 Minimum Investment
- 3-Year Commitment
- 6% Per Year Return (paid monthly)
- Security : Secured Pmissory Note
- Exit Strategy:

After 3 years, when your money is liquid, you will have the option to:

1. Reinvest in another 6% WFS alternative
2. Invest elsewhere

This innovative program was designed by very educated and dedicated Christian businessmen who saw the need for an alternative investment option versus banks and other less attractive investments!

WILSON FINANCIAL SERVICES

RETIREMENT | WEALTH MANAGEMENT

12419 LEWIS STREET SUITE 101
GARDEN GROVE, CA 92840
714-705-1900

WWW.WILSON-FINANCIAL.COM

WORKSHOP

The North Shore's First Coworking Space

10+ Desks available daily, weekly,
monthly at the Waialua Sugar Mill

More info <https://hawaiiwork.shop> or (808) 339-3099

The Mylk Barn

Plant-Based Delivery!

- Over 20 Different Mylks and Flavors
- Organic | Plant-Based | Made in Hawaii
- No Gums, Preservatives, Artificial Flavors or Colors
- Reuseable Glass Bottles
- FREE Delivery!



Order Online
TheMylkBarn.com/order
@TheMylkBarn



Valentine's Day



PICNIC



Sunday February 14

Picnic in the Valley

Socially-Distanced Picnic Spaces For 2 At The Main Lawn & Pikake Pavilion; First Come First Serve

Or, Picnic In The Valley
(No Alcohol Allowed Past The Ticket Booth)

Charcuterie Bento

Brie, Cave-Aged Cheddar, Manchego, Prosciutto, Coppa, Almonds, Grapes; Pineapple & Hawaiian Chili Jellies; Served With Sesame Lavash

House-Made Roast Beef Sandwich

French Baguette, Gorgonzola, Caramelized Sweet Onion, Arugula, Mustard Aioli

Vegetarian: Eggplant & Roast Pepper Sandwich

Shrimp Louie Salad

Mari's Butter Lettuce, Avocado, Ho Farm Tomato, Asparagus, Shaved Cucumber, Green Goddess Dressing

Vegetarian: Chiogga Beets

Orzo Pasta Salad

Artichoke Hearts, Sun-Dried Tomato, Salami, Chick Peas, Red Onion, Spinach, Light Olive Oil & Vinegar Dressing

Vegetarian: Substitute Sliced Caper Berry for Salami

Chocolate Mousse

Dark Chocolate Mousse, Ganache Drizzle, Cacao Nibs, Raspberries

Acqua Panna Water

Add-Ons: Charles de Fère Champagne Splits, Strawberry Lemonade Cooler, Local & Domestic Beers

Bar Menu Also Available at Pick Up

\$102 Per Picnic;
Serves 2

Order Ahead; Pick Up At The Wahi'Aina Snack Bar
On Sunday February 14, 10am - 1pm

What's Included

2 Same-Day Waimea Valley Admission Passes

Utensils, Plates, Cups, & Napkins For 2

Reusable Tote

All Dishes Packaged & Sealed For Your Safety

ORDER ONLINE: WAIMEAVALLEY.NET



SPECIAL DINNER & SHOW COMBO

Includes:

Dinner at any participating Hukilau Marketplace dining experience
Seating at our award-winning HĀ: Breath of Life evening show
\$69.96 regular price



'OHANA CLUB SPECIAL COUPON BUY-ONE GET-ONE FREE!

Members can enjoy our dinner and show for about
\$35 per person. Expires 3/31/21

This coupon is also available online at PCCOhana.com



To celebrate our reopening, we're offering a sweet deal for 'Ohana Club members. With our Buy-One-Get-One Free, you receive a \$20 credit per person (\$40 total) which can be redeemed at any of our participating eateries and retail shops in the Hukilau Marketplace, including Pounders Restaurant. Book your reservation today!



To book, please call **808-470-3651**.
For offer details,
visit PCCOHANA.com/dinner.



RESERVATIONS HIGHLY RECOMMENDED FOR POUNDERS RESTAURANT. VISIT POUNDERSRESTAURANT.COM

**Must be a Hawai'i resident with a valid ID. Credit is valid only on the same day as HĀ reservation. Credit can also be used at HMP retail stores. No cash back. Must be a valid 'Ohana Club member to receive the Buy-One-Get-One free offer. Some restrictions apply. Limited time offer. Expires 3/31/21.*

Ke Ala Pupukea Bike Path Safety Improvements

In an effort to keep everyone safe, the Honolulu City and County Facilities Maintenance Department recently completed improvements to the Pupukea Bike Path. "NO MOTORIZED VEHICLES" signs have been placed along the path to remind everyone that the path is for manually-pedaled Bikes and Pedestrians Only. The Honolulu Police Department has begun enforcement and anyone who is caught driving or parking a motorized vehicle on the bike path will receive a \$97 citation. A "Motorized Vehicle" is classified as any vehicle powered by a motor, ELECTRIC or GAS. Golf carts, motorcycles, mopeds, e bikes, mini bikes, pocket bikes and electric scooters are all examples of a "Motorized Vehicle".

The Facilities Maintenance Department has also begun repairing potholes and tree root bumps along the path. This is a long term project that will be ongoing. Parks Maintenance crews have recently provided some trimming and cleaning of the path in selected areas. The North Shore Outdoor Circle (NSOC) is hoping to establish a scheduled and consistent trimming and sweeping program so that the path is clean and safe for all users.

Our thanks go to Tyler Sugihara of Facilities Maintenance and Chris Sayers of the Parks Department for our safety improvements.





**Councilmember
Heidi
Tsuneyoshi
Serving You in District 2**

After over a decade of debate and discussion, the Honolulu City Council adopted the Ko'olauloa Sustainable Communities Plan (KSCP). Bill 79 (2021), CD1 will preserve agricultural lands and open space in this very special community.

The long process concluded on January 27, 2021, as the bill received unanimous support from the entire City Council, which recognized the importance of preserving the unique characteristics that make Ko'olauloa special. Throughout the years much has been done to promote land and agricultural preservation in the region, a shining example being Turtle Bay's conservation easement of approximately 660 acres of its land for the promotion of agriculture and open space.

The KSCP adoption process began in 2013 with the City's Department of Planning and Permitting (DPP) Planning Commission approving the KSCP and sending it to the City Council who introduced the plan as Bill 47 (2013). The bill was set to expire following its two-year adoption cycle and was reintroduced as Bill 53 (2015). As discussion stalled again, the KSCP was reintroduced as Bill 1 (2017) and Bill 1 (2019) in the following years. Following the expiration of these two versions, Bill 79 (2020) was introduced to continue the process. It is with this version that I worked to have any language pertaining to new housing developments on agricultural lands removed in order to preserve agriculture and open space. I was able to work with my City Council colleagues to ensure that the community growth boundary was brought back in to where it was placed in 1999.

The issue of development in earlier versions of the KSCP split the community. Many friends and family found their selves on opposite sides of the issue. Now that we have adopted the plan, I am going to take it upon myself to work with those on both sides of the issue to come together moving forward. Lack of affordable housing options in Ko'olauloa has been a priority issue for me. I believe there is adequate land that can be utilized for infill development and with the current rental inventory we could work on tax incentives to promote renting at affordable rates. At the end of the day, there are no winners or losers with the adoption of this plan. There is only us. And together, as a community, we will move forward in a way that the KSCP is everyone's vision for the future of Ko'olauloa.

I am also happy to report that the City Council also adopted a resolution requesting the Hawaii

State Department of Transportation (SDOT) to work with interested parties, including lineal Hawaiian descendants, to ensure that Kawaihapai Airfield, also known as Dillingham Airfield, continue general aviation operations. As you know, last year SDOT notified existing tenants of its intent to evict current occupants and discontinue its lease with the United States Army. The decision left State and City officials, along with the aviation and North Shore communities troubled and seeking answers. I felt it was important for the City Council to show its support for the aviation activities on the North Shore, which have become engrained in the community over the years. They are an economic driver for the area, contributing roughly \$12 million, annually. It is vital that instead of disposing of the property, we search for viable management alternatives to allow the Kawaihapai Airfield to be utilized as it has for so many years.

Mahalo again for everyone who gave their mana'o throughout the decade's long discussion of the KSCP. Please feel free to call or email me if you have any questions at 768-5002 or [htsuneyoshi@hono-lulu.gov](mailto:htsuneyoshi@honolulu.gov). MAHALO!

North Shore News
Next Deadline February 26
Publication Date March 10



**PAALAA
KAI
BAKERY**

**OPEN DAILY
5:30am~7:00pm**

Visit us online to sign up for our exclusive PKB daBest VIP card to save every visit! Don't forget to pickup a Snow Puffy or Sada's Malassada along the way!

www.pkbsweets.com



STONEFISH

THE GATHERING PLACE *grill*

Come feel the difference...



NEW LOCAL OWNERSHIP
NOW SERVING BREAKFAST
WEEKLY DINNER SPECIALS
ALOHA FRIDAYS *live music*



HALEIWA TOWN CENTER | 66-145 KAMEHAMEHA HWY, HALEIWA HAWAII 96712
 WWW.STONEFISHHALEIWA.COM | (808) 637-5015

Turtle Bay Foundation Invites North Shore, Ko'olauloa Students to Apply for Scholarships

Interested students can apply online now through Feb. 28

The Turtle Bay Foundation, the charitable giving arm of Turtle Bay Resort, invites North Shore and Ko'olauloa students to apply now for scholarships. Since 2012, the organization has supported 250 students in their pursuit of a brighter future and a college degree.

"We are proud to continue our tradition of supporting North Shore and Ko'olauloa students on their academic journey," said Kiele Muraco, vice president of the Turtle Bay Foundation.

Scholarships provide one-year financial support to individuals pursuing higher education. Applicants must be a Hawai'i resident and reside between Mokuleia and Kualoa or have a parent that has been employed at Turtle Bay Resort or Turtle Bay Golf for the last five years.

The Turtle Bay Foundation Scholarship Committee awards the scholarships to recipients based on a combination of criteria, including academic performance, academic review and video submission, extracurricular activities, and community involvement.

Interested students can learn more about the process and submit an application at www.turtlebay-foundation.org/apply.

The deadline to apply is February 28, 2021, at 11:59 p.m.

The foundation will announce the winners in Spring 2021. For the latest news on the Turtle Bay Foundation, please visit www.turtlebayfoundation.org/ or follow @turtlebayfoundation on Instagram and Facebook for the latest news on the Turtle Bay Foundation.



TBF Award Ceremony



**Senator
Gil Riviere**
**Serving Oahu's North and
Windward Shores**

What to Expect at the Legislature This Year

Like everything else, this year is going to be different at the Legislature. The Capitol is closed to the general public, but, for the first time, all committee hearings and floor sessions are readily available online. Remote, online testimony has finally been embraced, so it is much easier for residents across the state to participate in the proceedings without having to take the day off and travel to Honolulu. On the other hand, hearings are constrained within specific blocks of time and two-minute deadlines for verbal testimony are being strictly enforced.

The Legislative calendar has been shortened by one week. It is always difficult to get any bill through the committee gauntlet, back and forth through each chamber, out of conference committee, and onto the floor for final votes within 60 business days. The 2021 Session will conclude after 55 days on April 29. Many more initiatives will miss critical deadlines to advance and fewer bills are likely to pass. Maybe that is a good thing?

Of course, the most challenging issue of the year is how to balance the state budget with a \$1.4 billion shortfall in general funds, something on the order of 17% less than what had been expected pre-pandemic. Nearly every aspect of government services is being affected.

Fortunately for most government employees, their paychecks have not yet been impacted. They will be though, if the economy continues to falter. My heart goes out to all the private business owners and employees who have been severely impacted by this crisis. Many people have paid a very high price and we will all pay financially if we cannot get the broader economy going again soon.

We have a strong legislative and stake holder coalition fighting to save Kawaihapai Airfield. I introduced various bills to create alternative management structures outside of the Department of Transportation. The most pressing issue is the DOT's intention to shut down the airfield by June 30th. SB1368 would prevent eviction of tenants in good standing before the expiration of the existing lease in 2024. We can save the airfield, but we need time and we need to keep the businesses alive while we sort through the process.

I re-introduced bills to increase the minimum setback of wind turbines, SB957, to regulate shark tours, SB578, and to consider nature-based solution for climate adaptation, SB585. I submitted a bill

to prohibit disposal of the massive, non-recyclable wind turbine blades in Hawaii landfills, SB958, bills to improve DLNR enforcement and revenues, SB955 and SB1262, a bill to stiffen penalties for catalytic converter thieves, SB576, a bill to increase Hawaiian presence on the HTA Board, SB575, and bills defining what is pollution, (plastic) SB582, and what is not (sand), SB580.

My phone number is 586-7330. My email address is SenRiviere@capitol.hawaii.gov. Follow us on FaceBook or online at SenatorRiviere.com. Please visit us in Room 202 at the Capitol; or let's talk closer to home, maybe the next time we pass in the street. Mahalo.



The Wailua Community Association Board of Trustees voted to postpone the Annual Membership Meeting that was scheduled for February 17, 2021 due to the Covid-19 Pandemic. In six months, the Board will re-evaluate the feasibility of holding an in-person meeting based on the C&C of Honolulu COVID-19 tier restrictions.

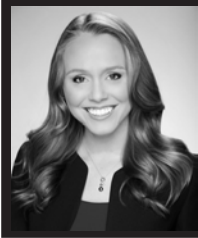
**PAALAA
KAI BAKERY**

**A Very Special Valentine's
SUPER SAVER OFFER**

*Desserts,
Cakes, and
Cupcakes for
your Sweetheart*

*Receive a special 15%
valentine discount
when you make a
purchase of \$20
or more*

This offer is valid from February 10 - 23, 2021.
Cannot be combined with PKB daBest VIP card discount, other
promotions, or discounts. www.pkbsweets.com - ALOHA!



**Representative
Lauren
Matsumoto
Serving You in District 45**

Aloha friends and neighbors!

At the Capitol, we are moving into committee hearings during the 2021 Legislative Session. Now is a great time to brush up on the lawmaking process. Take the time to become familiar with legislative knowledge by visiting the Capitol website at capitol.hawaii.gov or the Public Access Room at lrb.hawaii.gov/par/. Both are great resources to understand the legislative process all the way from just an idea to being signed into law. There are also great resources to learn how to write and submit testimony, follow bills throughout the session, and more.

But even with all the great resources available, it can still be difficult to keep track of everything happening during the whirlwind session. Here's a quick run-down to help you keep track of the issues you're passionate about this legislative session:

Become familiar with the Capitol website. Capitol.hawaii.gov is the best resource to find and read bills, receive hearing notices, and contact legislators.

Sign up for hearing notices, especially for committees that are hearing your important issues.

Create a custom report in measure tracking. If you know the specific bills you want to track, you can generate your own report to follow them throughout the session.

Write, submit, and testify! Legislators want to hear what's important to you, especially if a bill we're considering personally affects you.

Visit the Public Access Room. The PAR website lrb.hawaii.gov/par/ is a free resource for everyone on the 4th floor of the capitol. It is the best resource for the public during session. They are open Monday through Friday and have helpful staff ready to answer your questions, find legislation, and help you write and submit testimony.

This year I have introduced several bills that focus on lowering the high cost of living, increasing government transparency, diversifying Hawai'i's economy and saving Dillingham Airfield. A few of the bills I have introduced this year include:

HB567 - This bill would require the workplace to establish a telework or alternative work schedule policy. As part of the Women's Legislative Caucus bill package, this bill will tackle the inequity experienced by working mothers.

HB842 - Creates the Environmental Impact Statement Hub Website for information about Environmental Impact Statements. The user-friendly website will include information about hearings, public comment periods, and allows comments to be submitted online.

Creates transparency and ease-of-use in the EIS process.

HB844 - Procurement. Requires past performance be considered in future bid selection of contractors for sole source contracts and any competitive sealed bid or proposal contracts that exceed the small purchase threshold.

HB1157 - This bill would authorize the department of business, economic development, and tourism (DBEDT) to maintain airfields. It would then also transfer the lease of Kawaihapai Airfield from the department of transportation to DBEDT.

HB1158 - Requires the Department of Transportation to allow its original lease with the U.S. Department of the Army to expire on its agreed upon termination date, no sooner.

HB1159 - Establishes a high school career and technology program focused on aviation and aviation mechanics.

HB1160 - Protects tenants of Kawaihapai Airfield and prohibits the eviction of any tenant until the expiration of the current airfield lease, so long as the tenant remains in good standing.

HB1370 - Establishes an independent authority to be called the Kawaihapai Airfield Authority. This will allow continued use of Kawaihapai airfield for private and commercial use by the state's residents and tourists.

HB1372 - Allows any county to operate or maintain an airport or airfield.

To see the full list of legislation I introduced this session, please visit the legislative website I listed above.

Making any of these ideas a reality will take your help! Submit testimony and engage in the legislative process. And if you have any suggestions, please feel free to share them with me so that we can work together for the long-term health and vitality of our community.

And as always, please don't hesitate to contact my office if you have any questions or concerns about happenings in our community. You can reach me at (808) 586-9490 or at repmatsumoto@capitol.hawaii.gov.



Aloha

Lee C. Higgins, 76, who loved teaching, dance, and life on the water, died December 1, 2020 in Florida.

Since she dreamed of moving back to Hawaii, her ashes will be scattered in the waters off the North Shore.

<https://obituaries.nationalcremation.com/obituaries/the-villages-fl/lee-higgins-9936852>




FARMLOVERS
We're Back!
Hale'iwa Farmers Market
 at Waimea Valley
Thursdays 2-6pm
local farms food art
 local organic produce • vegan cheeses • bagels and challah
 juices • smoothies • gluten-free breads • tamales • pasta
 burgers • pizza • dim sum • local artisans & more!
 Find us on instagram: @alohafarmlovers



Adrian Worthen, M.D.

By Naty Hopewell

New doc at Koolauloa Health Center! He is Adrian Worthen, an Internal Medicine doctor who is working at our health center three days a week. He hails from North Carolina and comes from a family of doctors, father and two siblings working on Oahu. He went to University of North Carolina, where he majored in biology and chemistry. He attended medical school at Universidad Central Del Este in the Dominican Republic and did his residency at Tripler's Hospital. He is board certified by the American Board of Internal Medicine. He has published a variety of articles on topics, such as Acoustic Neuroma, Atelectasis and barotrauma of the middle ear. Dr Worthen also works as a hospitalist and treats subacute and covid patients at different sites on Oahu.

Besides being a medical director, Dr. Worthen is interested in a variety of activities. He played Division 1 soccer in North Carolina and is currently playing soccer for a North Shore League.

He also surfs, hikes, fishes, snowboards and enjoys reading literature. He enjoys traveling, especially to Asia.

Dr. Worthen's specialty in Internal Medicine adds another dimension to the health services offered at Koolauloa Health Center. A big Aloha to you, Dr. Worthen!

Ko'olauloa Health Center
293-9231

*We accept everyone regardless of ability to pay.
 Improving the quality of life for all. Imua!*

Talking Story with Tom Jacobs

There's a New Player in Haleiwa Town

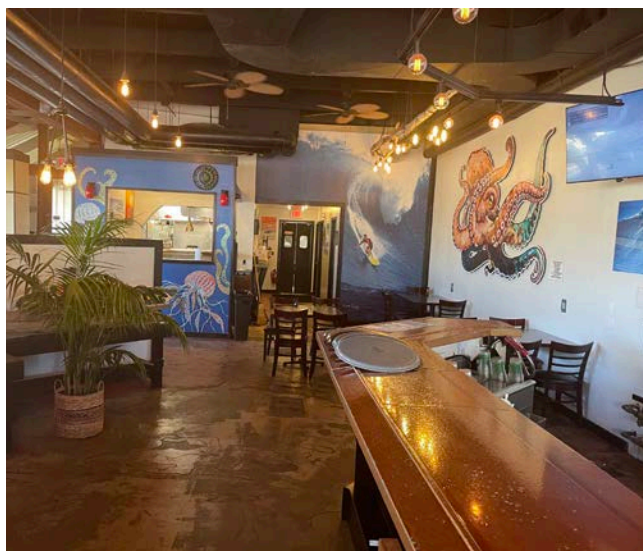
Wait a minute. Is that ... can that be Luis Silva, past owner/operator of Lui Bueno's restaurant in Haleiwa Town, back in his same kitchen, in his chef's hat?

Yes, Luis is back, and his new restaurant on his previous site, "Jorge's Tacos & Ceviche," has been serving delicious "Baja Mex" style food in a family restaurant setting for weeks now. And for those North Shore residents who ask if Haleiwa needs another Mexican restaurant besides Cholo's ... well, I'm a guy who was raised in L.A., who can remember buying "XLNT tamales" from a bicycle-powered vender in front of my elementary school for 25 cents. Can't have too much Mex, Baby.

The guy who tipped to me that Luis was up and running is Will Schoettle, Luis' landlord at Haleiwa Town Center, aka "the Haole guy." Like me, Will was raised in L.A., so he eats at Jorge's Tacos at least once a week. Will recommends the ahi burrito as "excellent." Will also likes Guillermo style Quesadilla.

Luis characterizes Jorge's as, "surf culture fresh Mex," so photos of Brock Little and many other North Shore surfers hang from his walls. Luis still paddles out, like Will does, like I used to ... every guy on the North Shore surfs, seems like. And most of the girls.

So do yourself, and Luis a favor. Grab yourself a meal at Jorge's Tacos & Ceviche. Hell, sit in the sun ... Luis has added outside tables. Go Mex, Baby.



Surf culture and fresh Mexican food.



Mahalo to the artists who helped make Jorge's a representation of the North Shore's culture of surf, skate and Aloha.

Paddyboy IG@Paddyboy
-Surfboards and Skateboard Art
Centaur Skateboards- Skate Decks
Sean Davey Photography
Jason Tipp-Gutted Skateboard Company
Lily Barrels -Art
Chuck Andrus Surfboards
Joe Green- Surf n Sea - Art
Mike Parillo- via Con Aloha Art
Ian- 38 Print T-Shirts,Hats and
Window Art Decals
Wooley Brothers Signs-Octopus
Hank Foto- Brock Little Mural
Usen Guzman-Plants
Cayenne Pepper-Octopus Art
Rick Doyle-Photography



Partners Luis and Morgan thank Jon Damm (center) former pro surfer and longtime resident for the pipeline photo donated to Jorge's Haleiwa!



NORTH SHORE SUSTAINABLE COMMUNITIES PLAN COMPREHENSIVE REVIEW

What is the North Shore Sustainable Communities Plan?

The North Shore Sustainable Communities Plan (NSSCP) is the City's long-range planning document that guides land use development and infrastructure investments over time. The NSSCP sets forth a comprehensive vision for O'ahu's north shore region (North Shore) to 2045 and beyond. It includes policies, guidelines and implementation actions informed by community input and analysis of issues and conditions specific to the North Shore. The last NSSCP was completed in 2011, and new issues have emerged. Let's address these issues together!

The NSSCP will cover:

- Demographic & Socioeconomic Trends
- Land Use & Responsible Development
- Climate Change & Resilience
- Economy
- Agriculture
- Infrastructure
- Water
- Sustainability
- Transportation
- Tourism
- Public Facilities & Services
- Natural Environment & Open Space
- Historical & Cultural Resources
- Neighborhood Character & Identity
- Implementation & Measuring Success



How does this relate to me?

The NSSCP creates policy for issues that are important to all who live, work, and play on the North Shore. It is a guide for the City to develop regulations and set investment priorities, and to make decisions about future development. The NSSCP comprehensive review is an opportunity for the community to contribute mana'o to shaping the North Shore's changing future. All are invited to join the conversation!

Let your voice be heard!

What matters to you and your 'ohana? How do you envision the North Shore in the year 2045 and beyond? What are your concerns for the future? What would you like to see changed? Let's shape our vision for the North Shore together!

JOIN OUR MAILING LIST!

Visit our project website at www.northshorescp.com to join our e-mail list to stay up-to-date on the latest news, announcements, and upcoming community workshop events!

JOIN US FOR A "VIRTUAL" NSSCP COMMUNITY VISIONING WORKSHOP!

MARCH 4, 2021 @ 5:30 PM - 7:30 PM
Visit www.northshorescp.com for information about how to join.

Oct. 2020 - Feb. 2021
Background Research:
Current Issues & Trends

Jan. - Sept. 2021
Vision, Goals, and
Policy Development

Jan. - Dec. 2021
Public Surveys & Virtual
Community Workshops

December 2021
Public Review of
Draft Plan

February 2022
Plan Finalization



City & County of Honolulu
Department of Planning and Permitting
650 South King Street, 7th Floor
Honolulu, Hawai'i, 96813

E-mail: comments@northshorescp.com
rcsyounghonolulu.gov

Website: www.northshorescp.com

Facebook: facebook.com/NorthShoreSustainableCommunitiesPlan

Waimea Valley Connects on the Digital Landscape

By Annissa Burcham, Botanical Collection Assistant

Waimea has been working to bring the valley to our audience online. The pandemic has made it more difficult to achieve the mission to ‘Preserve and perpetuate the human, cultural and natural resources of Waimea for generations through education and stewardship’. The closure has interrupted the core work of sharing the cultural resources and botanical collection with the community. Waimea is offering a free webinar series, preparing digital curriculum, and online activities that families can use to learn more about Hawaiian culture, conservation, and plants. Social media content that shares the botanical wonders and cultural treasures of Waimea are posted on a regular basis.

Ten webinars hosted on the Zoom platform are being offered twice a month. Topics range from “Hawaiian History and Archeological Sites of Waimea Valley” to “Air Layering for Hibiscus Propagation”. Topics were chosen based on a community survey conducted in 2019. Webinars will also be posted on the Waimea Valley YouTube channel to provide the community an archive of cultural and botanical information. Reserve your spot through waimeavalley.net/events and clicking on webinar series.

Waimea is currently open for walks through the garden to the waterfall. Videos of the botanical tour, culture walk, and education programs are also online. Short video clips showcasing the cultural and botanical tours are available on the Waimea Valley Instagram

page @waimeavalleyoahu and Facebook @waimeavalley. The goal of these videos are not to replace the onsite tours but to provide a taste of the valley and information that can reach a larger online audience.

By providing opportunities to learn about diverse Hawaiian topics Waimea Valley hopes to supplement some of the interactions lost due to Covid-19 pandemic restrictions. The digital outreach and education project is generously supported through a grant and made possible in part by Johnson Ohana and the Institute of Museum and Library Services CAGNA-248148-OMLS-20.

Webinar Series

Twice a Month
Sundays at 2 pm

30+ min interactive sessions
Free Zoom registration

INSTITUTE of Museum & LIBRARY SERVICES



LIBERTYTAX™
BRING IT. WE'LL HANDLE IT.

866-871-1040 | LibertyTax.com

\$500 UP TO \$6,250

IF APPROVED FOR AN EASY ADVANCE* LOAN

File your taxes and apply today.

*An Easy Advance is a loan secured by and paid back with your tax refund and is offered by Republic Bank & Trust Company, member FDIC, to eligible taxpayers. Loan amount options are based on your expected Federal refund less authorized fees. If approved for an Easy Advance, a Finance Charge will apply. Loan is subject to underwriting and approval. Easy Advance proceeds are typically available within 24 hours of IRS acceptance of tax return or within 24 hours for those filing before the IRS start date; however, if direct deposit is selected it may take additional time for your financial institution to post the funds to your account. Visit your Liberty Tax office to learn about the cost, timing and availability of all filing and product options. Valid at participating locations. Valid Jan. 2-Feb. 28, 2020.

GET \$50 CASH NOW**

WITH PAID TAX PREPARATION



LIBERTYTAX™

85-880A Farrington Hwy
Next to Golden House, across from Waia
Waianae, HI 96792
696-0222

94-210 Pupukahi Street, Suite 101
Across from Leeward Drive-In
Waipahu, HI 96797
671-8222

66-560 Kamehameha Hwy, Suite 3
Next to Killer Taco
Haleiwa, HI 96712
637-2222

PROMO: CASH50

866-871-1040 // LibertyTax.com //    libertytax

**With paid tax preparation. Valid at participating locations. Cannot be combined with other offers or used toward past services. One coupon per customer and per return. Other exclusions may apply. Void where prohibited by law. Valid 12/26-2/16/2020.



Aloha Nui Kakou,

Here is our mana'o for the week. As always, comments and interpretations are always welcome!

Pg. 64, proverb 553

He aupuni palapala ko'u; o ke kanaka pono 'oia ko'u kanaka
Mine is the kingdom of education; the righteous man is my man
Uttered by Kamehameha III

One of the best qualities of our third king Kauikeaouli is his strong foundation in Hawaiian and western literature, which created wonderful opportunities for him to address his people with very profound words such as this 'olelo no'eau. This came in a time where Native Hawaiian society began to mix thoroughly with that of the western world who came in the form of missionaries and tradesmen. From this western influence came the opportunity for Native Hawaiians to not only learn the art of reading and writing, but to apply it to their own language and in doing so brought the native people from a non-existent literacy rate to the highest around the world. Kauikeaouli, through his own intuition and council from his advisors recognized this as a way to project his people into a prosperous future, addressing the importance of this goal at only the age of 10.

This 'olelo no'eau sparks a lot of thought and reflection, as we have come from a year that has taught us so much and significantly altered our movements to that of a new norm. The greatest lesson that I had taken from his words is that education in all forms is what aids us in finding the best ways to be pono. Righteousness comes from sources of truth and enlightenment, which is what we should always strive to find in this time of false narratives and murky waters. Let this year be one to challenge our intellect, our comfort zones, and our aloha for others and ourselves.

Ke Aloha,

Makua Perry

Email makualii@lokea.org or visit www.lokoea.org



**North Shore
Chamber of
Commerce News**

**Welcome! New North Shore Chamber of
Commerce Sponsors/Members:**

- Aloha Paradise Real Estate- Rene'e Webb-Ehni (Platinum Sponsor)
- Engel & Volkers Honolulu- Kathi White (Bronze Sponsor)
- Hawaiian Beachfront Homes- Ralph Gray (Bronze Sponsor)
- Landmark Builders (Bronze Sponsor)
- North Shore Prosthetics and Orthotics (Bronze Sponsor)

- Aloha Island Homes- Joni Shiraishi
- Courtyard by Marriott Oahu North Shore
- Haleiwa Distillery
- Maxworks, LLC
- Northwestern Mutual- Gianni Bianconi
- Waiialua Farmers' Cooperative



FEED THE ROBOT

Lead Generation

Always know where your next client is coming from.

The exact leads you want in the quantity you need to create the most predictable profit for your business.

1.888.780.0101

www.feedtherobot.com

beep@feedtherobot.com

Want international or mainland US clients? Call, email, or visit our website to schedule a chat.



Available for in-office and Zoom meetings. Located in Haleiwa at the North Shore Marketplace.



Ivan Florence on a Waimea Bomb, January 16th.

Photo: Banzai Betty Media



BANZAI NORTH SHORE WIRELESS

TRIPLE CROWN VIDEO COMPETITION

The Vans Triple Crown of Surfing decided to do an all equal video competition for surfers, and the waves were pumping during the event which went from December 21st till January 18th. Of course it got a little intense as surfers were trying to get the best waves at three locations, Sunset, Pipeline and Haleiwa. "In celebration of over 35 years of Vans Triple Crown of Surfing progression on the North Shore, the time could not be more suitable to re-visit the concept and re-shape its legacy for years to come," said Bobby Gascon, senior director of global sports marketing at Vans. The event went well and included 125 eligible surfers to submit their two best waves with a total purse of \$200,000 up for grabs. Let's start off with the favorite surfer award. It was Tatiana Weston Webb and Jack Robinson taking those honors! A big congratulations to World Champ Carissa Moore and John Florence for taking top overall honors. Tatiana was second with Griffin Colapinto. Also a big shout out to Zoe McDougall from Sunset for her 6th place overall finish along with Torrey Meister, both our local North Shore surfers!

MAUI HAS A WAVE BUOY

PacIOOS has placed a wave buoy off of the Maui coast. They placed it there mid January and it will provide information on wave height, period and direction as well as surface temperatures. That happens in 30 minute intervals and is online for us to use. The organization works with the Army and the Coastal Data and Information Program, CDIP! When the big swell arrived January 16th the Maui buoy and the Waimea buoy measured wave heights of 19 feet. Experts said the low the wind conditions helped the surf bump up a bit but not as big as a swell in February 2019. Local winds usually bring down, break apart, the surf heights. The swell was a beauty, big and a great direction for Waimea Bay and the outer reefs. Plenty of surf stories about that swell on January 16 are online! Here is the link to that buoy! https://www.ndbc.noaa.gov/station_page.php?station=51205

ISA ORGANIZES A MEDICAL COMMISSION

The International Surfing Association had their first meeting of the newly formed medical commission. The group will discuss topics including water quality, risks, accident response, disaster relief, anti doping, Covid countermeasures and the Tokyo 2020 Olympic games. The upcoming World Surfing Games

in El Salvador which are a qualifier for the Olympics will be a great start for the commission to create proper health protocols. The 2020 Olympic games were postponed and are set to go on July 23-August 8th, 2021. So far there has been no official cancelation notices for the 33 sport event which has about 11 thousand athletes competing in 33 sports with 50 disciplines included. Expected are 206 countries. Lets hope it goes on because it's surfing's first Olympic debut.

POPULAR DEMAND

This writer is launching a new photo site after being asked a hundred times! Banzai Media is the name, <https://banzaibettymedia.zenfolio.com>. I have been asked many times to have a site for download so it makes it easy for folks to find my photos and purchase them! Thanks for the inspiration everyone! There will be a link on banzai Betty.com. Mahalo!



Video 🌸 Media
🌸 Photos & Press 🌸
Banzai Productions
Produces all Your Video
Radio & Media Needs
Special Rates on
Commercials - Web Videos
Photos - Social - Press
25 Years of Experience

808- 781- 2535





FIGHT COVID with COVID

If you've had the virus, your blood can save lives.

More than 20,000 people in Hawaii have been infected with COVID-19—and more are getting sick every day. If you've recovered from the virus, your blood contains lifesaving antibodies that can be used to help hospitalized patients who are struggling to make it through.

Who can donate?

If you've previously tested positive for COVID-19 and are now healthy and have been symptom-free for more than 28 days, your community needs your blood.

How do I schedule an appointment?

Call (808) 848-4706 or email COVIDplasma@bbh.org and say that you recovered from COVID-19 and you want to help. You can also learn more at bbh.org/FightCovid.




What is the donation process like?

It's a simple process and it will take place at Blood Bank of Hawaii's Dillingham Donor Center, Young Street Donor Center or Waikele Bloodmobile. First, you'll answer some health questions. Next, you'll sit back in a comfortable chair and relax or watch a movie for about an hour while they draw the plasma from your blood. When it's done, you'll enjoy some light refreshments.



In appreciation of your time, each person who donates their COVID plasma will receive a non-transferable certificate for \$25 at Foodland.



Donations by appointment only.
Online: bbh.org/FightCovid
Email: COVIDplasma@bbh.org
Phone: (808) 848-4706   





Dear Editor:

North Shore Beach Erosion is a Community Issue

A lot of people have been asking me lately, "what is going to happen to the homes at Kammies?" This is a complex issue, but one that does warrant our attention as a community.

The beach erosion between Sunset Beach and Monster Mush constitutes what we would call an "erosion hotspot" in the field of coastal engineering. Due to various factors including (but not limited to): nearshore bathymetry (i.e., underwater topography), geologic framework, predominant swell directions, storm history, and trade wind intensity, the erosion varies in severity in both space and time. The beach generally starts to erode in late spring when the winter swells subside, and trade winds become the primary driver of coastal processes in the region. The loss of sand from this area continues throughout the summer months, peaking in late summer/early fall. When the westerly-influenced North Pacific swells begin to arrive with the onset of winter, sand starts to come back to the area and the erosion subsides. This process then repeats itself every year. There are several other locations on the North Shore which experience this same phenomenon, with one of the most well-known/visible being the homes just on the Hale'iwa side of Laniakea beach.

Unfortunately, there is no sustainable solution to permanently protect the existing homes in this location that would save the beach and not impact the quality of surfing waves in the area, as well impact public access and nearshore ecosystems. Homes along this particular stretch of coastline have simply encroached too far seaward, resulting in a situation that cannot be effectively remedied without serious consequences. And the beach erosion in the Kammies area will only get worse with future sea level rise and other effects of climate change. If the end to this story was that all the homes between Sunset Beach and the Monster Mush beach access were to construct illegal seawalls under the cloak of darkness with disregard to state laws, this would be a sad thing for the North Shore community. Seawalls along this coastline would ultimately cause the beach to permanently disappear and would degrade world-class surfing in the immediate vicinity.

A couple of observations on illegal seawalls and other makeshift shore protection structures: First, they are not designed by a licensed professional en-

gineer, and it is only a matter of time before they fail. Obviously, this poses concerns of public safety. But also, failures of the makeshift structures would result in associated construction debris (and likely elements of the homes they were protecting) littering the beach. It would take a long time for this mess to be cleaned up, and the nearshore ecosystem, beach wildlife, adjacent and nearby oceanfront property, and residents and visitors that cherish the beautiful beaches from Sunset to Ehukai would indeed be the ones to suffer. Also, history has shown us that once illegal structures (or the "accidental" construction debris situation just described above) are in place on a beach, they can be very challenging to remove due to legal, logistical, and financial considerations.

I was pleased to recently learn that the Surfrider Foundation (Oahu chapter) has decided to get formally engaged in shoreline erosion issues on the North Shore. I look forward to participating in these community meetings and I hope you will also dedicate some attention to this important issue in 2021, either by participating in Surfrider's planned meetings, speaking with your neighbors about what type of shoreline management alternatives seem to be best for the community and future generations, and/or reaching out to get involved with Shoreline Conservation Initiative's volunteer-based shoreline monitoring program. Coastal erosion is a difficult but unavoidable threat that affects the entire North Shore community. I strongly hope you will consider my suggestions for getting engaged so that we can come together, as a community, for collaborative discussions on how best to move forward. Tough decisions will have to be made - let's make sure that we are informed and part of the discussion so that those decisions are not made for us.

Thank you for reading, and please do not hesitate to contact me with any questions or comments at info@shorelineconservation.org.

Sincerely, Rob Walker

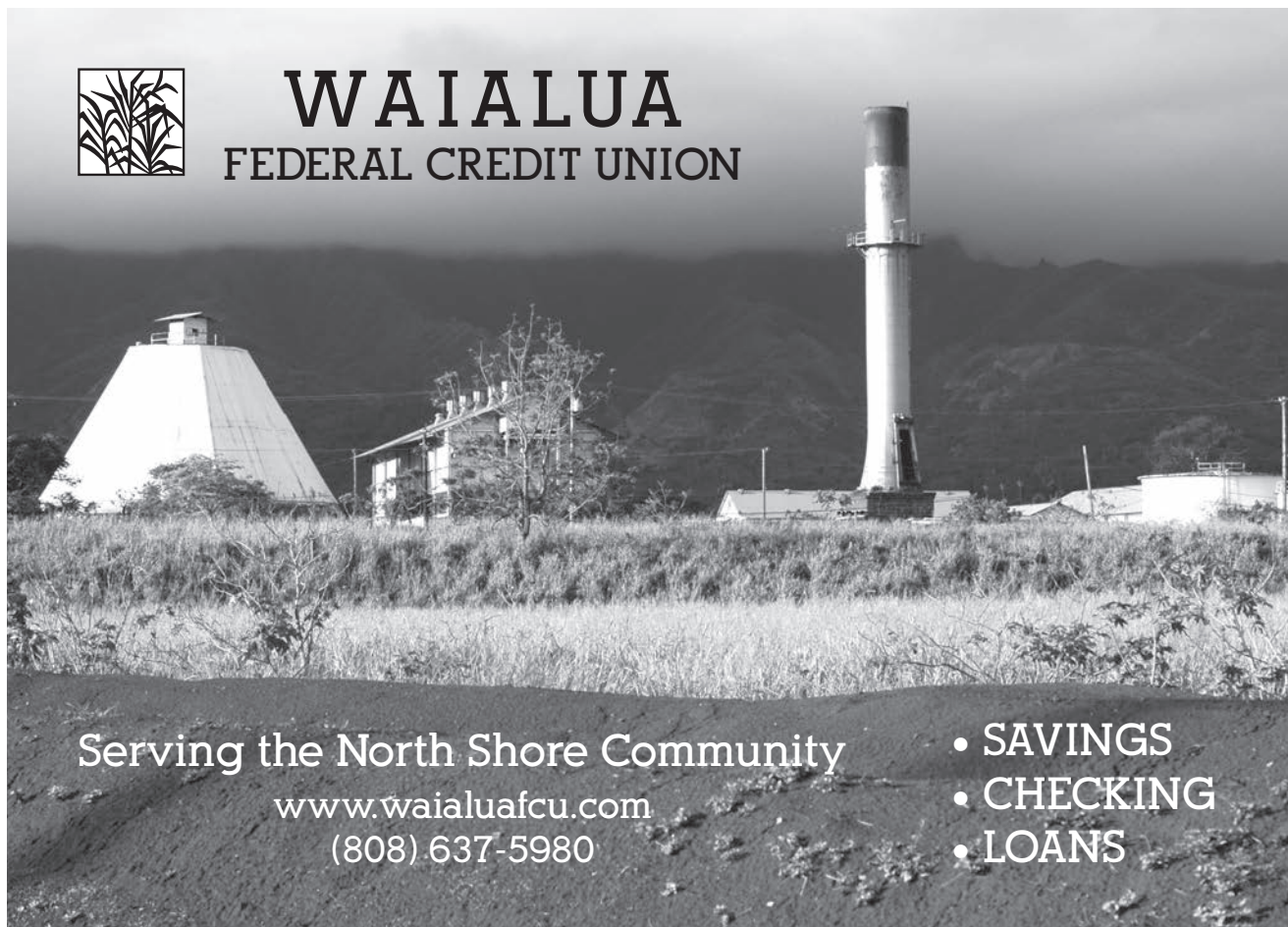
Rob Walker is a licensed professional engineer who specializes in the shoreline environment. He is President of Shoreline Science & Engineering, LLC and Executive Director of the 501c3 nonprofit Shoreline Conservation Initiative, both organizations based out of Hale'iwa.

Waiialua Farmers' Co-Op Market
Saturdays 8:30am - 1:00pm
Historic Waiialua Sugar Mill

Support Local Farmers and Local Artists
Masks Required & Practice Social Distancing



WAIALUA FEDERAL CREDIT UNION



Serving the North Shore Community

www.waiialuafcu.com

(808) 637-5980

- SAVINGS
- CHECKING
- LOANS



CC SALVAGE

No Job to Small, We Haul it All!

Island Wide Service 24/7/365

Wanted Junk Cars

808- 457-2103

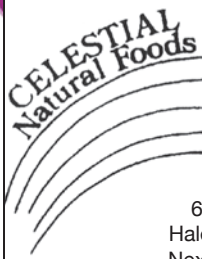
Aloha Nui Loa Mike

Michael Scott Ferguson died December 23, 2020 at his residence near Sunset Beach on the North Shore of Oahu, Hawaii. He was born November 14, 1948 and spent his early years in Kailua, Oahu. After graduation from high school he joined his father in Tokyo, Japan. He moved to Hong Kong and Thailand where he absorbed the arts and culture of Southeast Asia, Indonesia and Bali. Upon return to Hawaii he designed and built a Thai style pole house in lush cool Pupukea where he lived for 40 years.

Mike had many talents. He played the guitar and harmonica, sharing his love of music by occasionally joining local entertainers in jam sessions and creating custom CD's for family and friends. Mike loved the ocean and trained as a videographer in order to capture the grace, beauty and thrill of surfing the "Big Waves" of the North Shore.

He is predeceased by his parents, Dorothy and David Ferguson. He leaves behind his sister Carol Ferguson, niece Lauren Hertig, nephew Jared Hertig and wife Kori Schell, all residents of Colorado. Mike was a kind, thoughtful and generous man. He will be greatly missed by his family and his many friends scattered around the world.

BULLETIN BOARD



Featuring the largest selection of certified organic produce on the North Shore. No panic...ours is organic. Open 7 days. Mon.-Sat. 9am-7pm. Sun. 9am-5pm

66-445 Kam. Hwy
Haleiwa, Hawaii 96712
Next to the Post Office
808-637-6729 • 808-637-1922 fax

LTC Laie Trucking Company, LTD

* Ready Mix Concrete * Recycled Aggregates
* Pump Service * Hauling * Equipment Rental

PH: (808) 293-8710 PH: (808) 293-1296
P.O Box 121 FAX: (808) 293-2890
Hau'ula, HI 96717 laietrucking@hawaiiintel.net

"A LOCAL COMPANY, BUILDING A LOCAL COMMUNITY"

N-C PLUMBING & SUPPLY

Cont. Lic. No. C-8913



- RESIDENTIAL & COMMERCIAL SALES & SERVICE
- CONTRACTING & DESIGN • HOME PLUMBING SERVICE
- PLUMBING FIXTURES, HEATERS • FREE ESTIMATES

Nestor P. Calilao (Owner)	Bus:	637-8662
P.O. Box 769	Res:	638-5157
Waialua, HI 96791	Cellular:	372-8718

Saccoccio & Lopez

ATTORNEYS AT LAW

TRIAL LAWYERS

Serving Hawaii since 1984

637-7611

Personal Injury -Property damage
Criminal Law - Traffic Crimes
Landlord Tenant - Bankruptcy

Tavares company

We offer great service!

Thiago Tavares
Welding repair



(808) 304-1042

thiagoamtavares@hotmail.com
67-256 Goodale Ave, Waialua, HI



HALEIWA, HAWAII

Celebrating 40+ years of Professional Photo Services and Historic Images to the Community.
search: northshorephotohawaii.com

Munden Design & Build

Lic.#BC19632

Design • Plans • Permits • Construction
Additions & New Residences

808 391-8616

Providing quality work since 1978

PARADISE

"IF YOU BUILD IT, WE WILL PLUMB"

PLUMBING

Dale Christensen C-29856 (808) 368-1473



NORTH SHORE FOOD DELIVERY

Let North Shore's original delivery service bring your next meal to your doorstep!

Thursday-Saturday evenings
Order online: dudefoodhi.com

WE TRANSFORM YOUR PET



PET GROOMING BY MARINA MILLER Happy Paws 808

(808) 940-3080

Info@happypaws808.com www.happypaws808.com

Aloha North Shore Neighbors,

We miss you!

In case you haven't heard, the **Kahuku Public and School Library** is open for Wiki Visits, which means patrons can come inside to browse the bookshelves again. Please note, our hours have changed. Read below to learn more about our new setup.

Here's what you need to know:

- Wiki visits start at the top of the hour and are available on a first-come, first-serve basis
- A limited number of library patrons will have up to 45 minutes to find books and materials, ask for assistance, use copiers and/or use a computer.
- The last 15 minutes of each hour the library will be closed for disinfecting high touch surfaces
 - Library patrons are limited to one Wiki Visit per day
- Studying and reading inside the library is not available yet
- Patrons are required to follow State mandated face mask and social distancing laws.

For more information, please visit our website at librarieshawaii.org or check out this helpful video at https://youtu.be/zhII_XwFk2k

AARP Tax Aide will offer limited services

starting in mid-February at Kahuku Public and School Library. Like so many services, AARP Tax Aide will be available by **APPOINTMENT ONLY.**

To make an appointment, please call the **808-481-8013** directly.

The Kahuku Library staff cannot make reservations for AARP Tax Aide. No walk-ins are allowed.

North Shore News



2021 Schedule

PUBLICATION DATE	DEADLINE DATE
March 10	February 26
April 7	March 26
May 5	April 23
June 2	May 21

Direct-Mailed to Every Home
MOKULEIA · WAIALUA · HALE'IWA
· KAHUKU · LAIE
Every Other Wednesday
15,000 copies

North Shore News will be published once a month until further notice.

“The North Shore’s most popular publication” since 1970
(808) 780-8037 · NSNHaleiwa@gmail.com · NSN4Linda@gmail.com
www.northshorenews.com

Market days on the Farm

56-1089 KAMEHAMEHA HWY, KAHUKU 96731 (MARCONI ROAD)

EVERY 1ST AND 3RD SATURDAY EACH MONTH | 9AM-3PM

FEBRUARY 6, 2021 FEBRUARY 20, 2021

MARCH 6, 2021 MARCH 20, 2021

Market day: Variety of Plants, Fresh Produce from local farmers and gardeners, Poi, Kulolo, Cupcakes, Poke stackers, Cookies, Lilikoi and Hibiscus Tea, Boba Drinks, Coconuts, Fresh Baked Breads, Jewelry, Clothing, custom made crafts and so much more. Come by and Support Local.

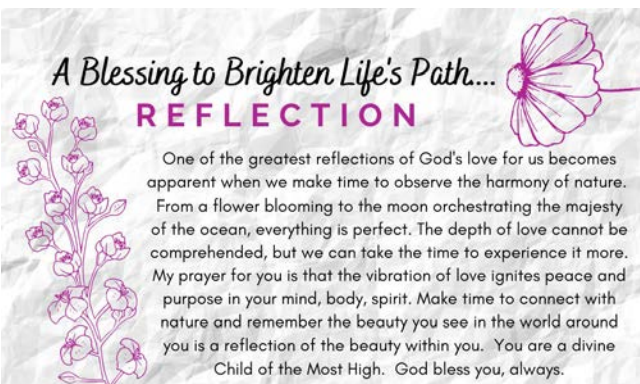
VENDOR SIGN UPS PLEASE EMAIL: MARCONIMARKETDAYS@GMAIL.COM

Please wear a mask

A Blessing to Brighten Life's Path...

REFLECTION

One of the greatest reflections of God's love for us becomes apparent when we make time to observe the harmony of nature. From a flower blooming to the moon orchestrating the majesty of the ocean, everything is perfect. The depth of love cannot be comprehended, but we can take the time to experience it more. My prayer for you is that the vibration of love ignites peace and purpose in your mind, body, spirit. Make time to connect with nature and remember the beauty you see in the world around you is a reflection of the beauty within you. You are a divine Child of the Most High. God bless you, always.



WE APPRECIATE YOU

MAHALO

FROM THE NORTH SHORE FOOD BANK

Hawaii Food Bank, Aloha Harvest, Waialua Federal Credit Union, Jeff- NS Auto/Truck, The Nichols Family, Aunty Ala, Katherine Lee, Natalie Graham-Wood, Sandra Budlong, North Shore Marketplace, Eugenia Posenecker, Tim Reimer, Derek Johnson, Nate-Dude Where's My Food, Gil Gordon, Diana Bonsignore, Susan Luehrs, John O'Neill, Dr. Todd Okazaki, Pat Sagon, Barbara George, Bill Nations, Carmel Tomlinson, Barbara Ritchie, Reed Matsuura, Counter Culture Organic Farms, Paalaa Kai Bakery, Veteran's Affairs, Kauai Coffee, UPS, Antra & Boyd Ready, Waimea Valley, Island X, Bridget, Michelle, Malama Loko Ea, Waialua Community Association, North Shore Christian Fellowship, YMCA-Camp Erdman, Haleiwa Jodo Mission, Kathi Albiar, Mohala Farms, Waialua Bakery & Ted's Bakery. Florida Subia, Rosemary Basilo, Dominick & Kim Lyons, Julie Mansur, Belita Ames, Harry Hyman, Jerri & Ben Nihiiipali, David Hughes, Aggie Carillo, Frances Hodge, Colleen Haviland, Dale Yoshizu, Nancy Berman, Peter Grach, A Charitable Foundation, Tactical Investment Mgmt, James Neary, Marsha Taylor, Susanna Chin, Nita Vance Ferreira, Jeff Heinhold, Roy Hazel, MPW, The Quinlan Family, Edith Ramiscal, Judith Machian. A special MAHALO to all the volunteers and those not mentioned.





CLASSIFIEDS

The North Shore News is published every other Wednesday and mailed free of charge to all North Shore homes and businesses.

PRESS RELEASE POLICY: Submit press releases, mail or email to Editor, North Shore News, P.O. Box 117, Haleiwa, HI 96712. Please type your releases and keep them shorter than 200 words unless they are of an unusual news interest. Releases should be viable news stories and are published on a **space available basis only**, with priority given to those received in our office first. You may attach photos. We are not responsible for the return of any photos. All materials are submitted at owner's risk. We reserve the right to edit and/or refuse all submissions including advertising.

EDITORIAL POLICY: We welcome articles and letters from our readers. Letters to the Editor are published on a space available basis only and preference is given to shortness of length, and quality of content. We prefer to run not more than one letter, per person, per 6 month period. Letters subject to edit.

Views expressed by our contributing writers and advertisers do not necessarily reflect the view of the management and staff of the North Shore News. All rights reserved. Reproduction in whole or part without permission is prohibited. © 2021.

Editor & Classifieds

Linda Seyler

Typography

Downtown General Store

Contributing Writers

Tom Jacobs

Betty Depolito

State Representative Lauren Matsumoto

Senator Gil Riviere

Councilmember Heidi Tsuneyoshi

Choon James

Photography

Banzai Productions



Please recycle this newspaper.

SERVICES

SHORE ELECTRICAL SERVICE

New Const-Remodels
638-0049/Lic#C20777

Andres Plumbing

All your plumbing needs
808-256-7337 Lic#C24500

"Keep It Country"

Computer & Electronic Repair
Vintage HiFi - Buy/Sell
371-3089

Hawaii Tree Co.

Trimming & Removal
Professional-Reliable
Free Estimates
462-2749

ALOHA COMPUTER

PC/MAC Repair/Virus
Removal
MOBILE COMPUTER
REPAIR SERVICE
372-2667

CS EuroCars Kapolei

Mercedes Repair Shop
with low labor rates
ASE Certified Technician
27 years experience
2116 Lauwiliwili St. Unit 104F
Kapolei, HI 96707 - Under New mgmt.
808-682-1957

ANGELS PLUMBING

Repairs
Remodeling
Renovation
638-7878
Lic. #C12004



DOG/CAT NAIL TRIMMING

At your home- only \$20.
Call 808-388-5336

GERMAN CAR SERVICE

Professional-Qualified
Technician
Call Gary
637-6800

HARVEY'S TOWING LLC

24 hr Towing Service
Lockouts, Jumpstarts &
Recovery. Specializing in
opening locked car doors.
Call anytime 478-0333

ESTRADA'S

WE HAUL 'EM
Garbage-Rubbish-Trash
Call Rick 808-216-9419

BUSINESS SERVICES CENTER

Fast & Convenient Copy, Fax, Scan,
Computer/Internet, Laminate, & More



Across from
the Haleiwa
Post Office

637-4558 • gonorthshore.org
#gonorthshore

**Celestial Natural Foods
Wellness Wednesday's**

Receive 10%off on all
Wellness products
Herbal Formulas,
Supplements, Protein
Powders and much more.

**North Shore
Smoke Shop**

Est. 2007
Covid Hours:
Tues-Sun 11am - 5pm
Closed Mon (temporary)
66-521 Kam Hwy, Ste B
Haleiwa 637-1750

**HOT YOGA
NORTH SHORE**

LIVE classes everyday!

Sign up and book online.

www.hotyoganorthshore.com

Celestial Natural Foods

Senior Tuesday's
10%off Storewide for our
Kupuna

ABCarDetailing

Protect your Investment
Best and most affordable
mobile car detailing on the
island.

- Full interior/exterior customizable details
 - Basic wash and wax
 - Paint correction (removal of swirls and scratches)
 - Ceramic coating (protection for up to 5 yrs)
 - Stain Removal
 - Headlight Restoration
 - Engine Bay cleaning
- Also providing golf lessons for beginners.
Call Joe for appointment
808-492-2214

Radiant Skin Care & Waxing

Aynjul Benigno
Licensed Esthetician
Call/Text 808-222-8124
radiantskincareandwaxing.com

Ka'ala Healing Arts
66-216 Farrington Hwy #200B
Waialua, HI 96791

IG: @nsnews_haleiwa

HOW TO CONTACT THE NORTH SHORE NEWS

Letters to the Editor, and other items submitted for publication consideration may be sent to us via:

MAIL: P.O. Box 117, Hale'iwa, HI 96712

E-MAIL: NSNHaleiwa@gmail.com

NSN4Linda@gmail.com

PHONE: (808) 780-8037

www.northshorenews.com

CLASSIFIED ADS

Next Issue - March 10, 2021
Deadline Date - Feb. 26, 2021

OAHU SPCA
Wahiawa Veterinary
Clinic and Hospital
Tuesday-Saturday
By appointment
(808) 754-1519

Join us for a "Virtual"
NSSCP Community
Visioning Workshop!
March 4, 2021
5:30pm - 7:30pm
Visit www.northshorescp.com
for info on how to join.
See page 11 for info

Sunset Beach Christian
Church Food Bank
Every Tuesday
12 - 2pm

Classified Ad Rates
3 lines (min.) \$18.89
4 lines \$25.13
5 lines \$32.45
1" Box Ad \$41.88
(27 characters in each line)
Include your contact information.
**Ads can be text, or emailed.*
We reserve the right to refuse any
advertisement with a full refund.
(808) 780-8037 • NSNHaleiwa@gmail.com

FREE ADS
Garage & Yard Sales,
Reunions, Lost & Found.
Email ad to:
NSNHaleiwa@gmail.com

Marianne
Abriago, Properties
Specializing in -
North Shore
Real Estate
Ask for our list of avail-
able properties and/or a
free market analysis.
Marianne M. Abriago
"Realtor since 1974"
Office **637-3511**
Fax **637-0777**
Email **mabriago222@aol.com**

HELP WANTED

Pet Care Professional
w/ Grooming Skills
Salary Neg. References
required. Call for an appt.
808-638-7073

North Shore Chamber of Commerce is looking for volunteers to help with our Visitor Center sales and services. 3 hour shifts, Monday through Friday are available. Come be part of our team, helping the North Shore be a better place to live, work, and play!

FOR RENT

TABLES & CHAIRS
Call North Shore News
780-8037
All proceeds go to the North
Shore Food Bank

MISCELLANEOUS

THE STABLES AT
TURTLE BAY
Enjoy a guided 45-minute
Trail Ride along the coast
with spectacular ocean
views. Kama'aina discounts
are available. Book your
Trail Ride online at:
fal.cn/STABLES

Hawaiian Electric and
Aloha United Way Launch
Hawaii Utility Bill Assistance
Program
The program aims to help Hawaii residents who are financially affected by the pandemic and who have fallen behind on their electric, water, sewer and gas bills. Applicants will be qualified on first come, first serve basis and until all the funds are disbursed. The Hawaii Utility Bill Assistance Program will launch at 8am on Feb. 8, 2021 at AUW.org/utilityhelp

Happy Valentine's
Day!

'Ohana Days
Loko Ea Fishpond
Every Saturday 9a-11a
Small group workdays based
on CDC guidelines until further
notice. For info or to register
visit: www.lokoa.org

Mission PAWSible Contest
Calling all animal-loving students
grades 6-12! Be an animal hero
and enter the Hawaiian Humane
Society's annual Mission PAWSible
contest! It is the Hawaiian Humane
Society's mission to ensure that
all animals are treated humanely.
There is no entry fee. Contest
closes at midnight on March 1,
2021. Visit HawaiianHumane.org/MissionPAWSible
for contest
details and to submit entries. For
more info call 356-2223



Mahalo 96712 neighbors
for the support!

KQNS 107.3 FM
CHRISTIAN RADIO
Inspirational, Health
Music, Addictions, Mar-
riage,
Prophecy, Stories, etc.

POTHOLES
ALERT & REPORT
State Owned Roads (e.g., Kam Hwy)
536-7852
City Owned Roads (e.g., KeNui/
Pupukea Rd)
768-7777

Rid-A-Fridge
Have a working refrigerator
or freezer you no longer
need?
Hawaii Energy's Rid-A-
Fridge program
will recycle them and pay
you \$75 for each one.
Or you can donate
your \$75 to a local
foodbank?
Call for more info
808-537-5577

Would you like to reserve
the North Shore News
via email in color!
Just send
us a message at:
NSNHaleiwa@gmail.com

QUESTIONS?
ONEOAHU.ORG
COVIDRESPONSE@
HONOLULU.GOV
768-CITY

Buttons Surf School
SURF & SUP Lessons
Any level, any age,
one on one
808-650-8106
ButtonsSurfSchool.com

Haleiwa Jodo Mission
Virtual Buddhist Services
Search "Koji Ezaki"
on YouTube

Hawai'i Statewide Marine
Animal Stranding,
Entanglement, and
Reporting Hotline
Includes stranded/injured sea
turtles, monk seals, dolphins,
and whales.
Phone: (888) 256-9840

North Shore Serenity
AFG (AI-anon Family
Group) is still meeting
Wednesdays at 6:30 pm,
but for now it is via Zoom.
The Meeting ID is 847 8326
6578, and the password is
809980. We plan to return
to St. Michael's Church
when COVID restrictions
are lifted, but that won't be
for awhile.

Now is a Great Time
to Quit Smoking!
Call the Hawaii Tobacco
Quitline or enroll in their
Online Coaching Program
1-800-QUIT-NOW
hawaiiquitline.org

North Shore Food Bank
@ nsfoodbank



Healthy patients from the inside
Outpatient Services

Cardiopulmonary

- Echocardiogram (ECHO)
- Electrocardiogram (EKG)
- Electroencephalogram (EEG)
- Pulmonary Function Test
- Treadmill Stress Test
- Holter Monitor

All services are available on one floor.

Diagnostic Imaging

- Bone Density (DEXA Scan)
- Computed Tomography (CT)
- Mammography (3D offered)
- Nuclear Medicine
- Ultrasound
- X-Ray

Walk ins are available for some procedures.

Laboratory

- General laboratory
- Phlebotomy services
- Transfusion services

Walk ins are welcome.

Rehabilitation

- Physical Therapy (Orthopedic, Neurology, Balance/Vestibular, Sports)
- Occupation Therapy (ADLs, Hand)
- Speech Therapy (VitalStim, Modified Barium Swallow Study)

Come visit us in our new & expanded clinic.



Our Emergency Room is here for you 24 hours, 7 days!



For your safety and the safety of others, **Wahiawa General Hospital** has implemented CDC safety recommendations which includes screening questions and temperature checks upon entering, face mask, social distancing, and proper cleaning techniques after every use to name a few.

128 Lehua Street Wahiawa, HI 96786 | (808) 621 - 8411 | www.wahiawageneral.org