



“E Ala Na Moku Kai Liloloa”

NORTH SHORE NEWS September 23, 2020 VOLUME 37, NUMBER 13



Erosion Rocky Point Area. Cover Story and Photos: banzaibetty.com

North Shore’s Beach Erosion, Problem Is Not Washing Away

Coastal erosion on the North Shore is a major concern, with this season's surf swells biting at our shoreline. The short-term solution currently allowed by the state calls for the use of black synthetic tarps filled with sand stacked on top of

one another. Referred to as “sand burritos” by residents. “The tarps seem to be helping somewhat but a band-aid is all they are,” said a property owner.

The power of our storms and swells is devastating to homeown-

ers who live on the beach. Owners with beachfront properties in “imminent danger” may acquire permits to use this temporary erosion control measure. Another solution proposed was building seawalls but in the long run the shoreline would harden and the beaches would disappear anyways.

Beach erosion is not just a statewide problem, this is a global problem and the North Shore needs a permanent solution.

Please be aware and stay off eroding beach areas!

PRRT STD
ECRWSS
U.S. POSTAGE
PAID
HONOLULU, HI
PERMIT NO. 1479

RESIDENTIAL CUSTOMER

*****ECRWSSEDDM*****

NORTH SHORE FOOD BANK

IG:@nsfoodbank
Sponsors: Hawaii Food Bank
& Aloha Harvest

DISTRIBUTION UPDATE

Wednesday, September 23, 12 noon,
Kaiaka Bay Beach Park
with North Shore Christian Fellowship
& Malama Loko Ea

Wednesday, October 7, 12 noon,
Kaiaka Bay Beach Park

Wednesday, October 21, 12 noon,
Kaiaka Bay Beach Park

Wednesday, October 28, 12 noon,
Kaiaka Bay Beach Park
with North Shore
Christian Fellowship



For more information and
donations contact :
Linda (808) 780-8037

give aloha

Make a donation to our organization at any Foodland or Sack N Save checkout, and Foodland plus the Western Union Foundation, will make a donation to our organization too!

Our organization code is : **78488** for Once A Month Church. All proceeds will go to the **North Shore Food Bank**.

How to Help:

1) Show your Maika'i Card and make a donation to our organization (up to \$249 per person) at any Foodland or Sack N Save checkout from September 1-30, 2020.

2) Foodland and the Western Union Foundation will match all donations up to a total of \$250,000 for all organizations combined.

Thank You For Your Support!



COVID-19 has taught us how fragile our island home is. Together, we can rebuild O'ahu into a healthy and resilient community for our future generations. As Mayor, my priorities will include:

- **Preserve** open space and promote local farming
- **Prioritize** residents as we reopen and carefully manage tourism
- **Invest** in parks, trails, bike paths and beach access
- **Reform** Department of Planning and Permitting to enforce against illegal activity
- **Maintain** the unique character, culture, and experiences of O'ahu
- **Support and sustain local** businesses and entrepreneurs by establishing a City fund
- **Establish** an Office of Community Engagement to proactively collaborate with community members

I hope you will join me in building a better O'ahu with integrity and unity.

I humbly ask for your support,
Keith Amemiya

AmemiyaForMayor.com

Paid for by Amemiya for Mayor | PO Box 1777, Honolulu, HI 96806

The Hale'iwa Family Dental Center, Ltd.



- Adults and children
- Most cases completed in 4-12 months
- Clear braces available
- Lower cost
- University tested
- Used for over 20 years

Produced by Todd R. Okazaki and Staff

"Straighten those crooked teeth that have bothered you for years"

Conveniently located behind First Hawaiian Bank in
Historic Hale'iwa Town
Call 637-9652 for your reservation

WAIMEA VALLEY NEEDS YOUR HELP

PLEASE
KŌKUA

We urgently need your support to see us through these challenging times. If you are able, please consider a donation or conservation project to raise critical funds toward preserving this special ahupua'a for all. *Mahalo.*

MAKE A DONATION:
WAIMEAVALLEY.NET

TREE/BENCH/GARDEN INQUIRIES:
INFO@WAIMEAVALLEY.NET



DONATE

No amount is too small; all contributions are appreciated! Fundraising is vital if the Valley is to eventually reopen and preserve local jobs. Your donation directly supports preservation and maintenance of our botanical gardens, authentic historical sites, and cultural programming. All donations are tax deductible to the fullest extent of the law.



CONSERVATION TREE

Every tree planted in the native forests above Waimea Valley strengthens these precious conservation lands. Plant your trees alongside our staff, or we may plant on your behalf. Free single-day individual admission is included with each tree purchased; multiple trees may be eligible for discount (please inquire).



DEDICATION BENCH OR GARDEN

Dedication benches or gardens are beautiful, long-lasting ways to honor a special individual or group. Benches are custom made from hardwood harvested at the Valley; gardens are chosen from our world-class botanical collections. Every bench or garden includes a custom plaque, private dedication/memorial service, 4 lifetime passes for your 'ohana to visit the garden, and lifetime maintenance.



NORTH SHORE, O'AHU

CALL: (808) 638-7766

@WAIMEAVALLEY  

@WAIMEAVALLEYOAHU 

HOW DO YOU CONTINUE HEALTH CARE IN TIMES LIKE THESE? HERE ARE A FEW ANSWERS.

If you've lost your health care and are not sure what you can afford, we want you to know AlohaCare is available through Medicaid and Medicare. Requirements have changed due to recent events, so you may now be eligible.

MEDICAL AND MORE

BASIC DENTAL* FOR ADULTS THROUGH HAWAII DENTAL SERVICE (HDS)

Includes an annual exam, cleanings twice a year, a full mouth x-ray and more.

CHOICE OF DOCTORS AND ACCESS TO TELEHEALTH

Choose from our large network of doctors and get virtual visits from the comfort of your home.

FAMILY MEDICAL

Stay healthy with full medical, prescriptions, and more.

To enroll in AlohaCare, call 973-0712 Toll-free: 1-877-973-0712
TTY/TDD: 1-877-447-5990 or visit AlohaCare.org
To apply for Medicaid, visit medical.mybenefits.hawaii.gov
or call 524-3370, or 1-800-316-8005 on the Neighbor Islands.



*Available only to adult members who do not have any other medical or dental insurance.

quick cuisine™

HAWAII LOCAL DELIVERY

**NOW DELIVERING
IN NORTH SHORE**

**MOKULEIA
TO V-LAND**

GET IT ON **Google Play**

Download on the **App Store**



Aloha friends and neighbors!

I want to first acknowledge that this is a really difficult time for our community. Many have lost their jobs and income, and everyone has had to adjust to social distancing and not being in constant contact with our friends and family. It has taken an economic toll on all of us. On top of this, the communication of leaders has been unclear and at times contradictory to itself creating frustration and confusion among our communities. The uncertainty and weekly changing of the rules in emergency proclamations have resulted in the suffering of our local businesses. This is an incredibly important topic of conversation for us at the capitol as we work on long-term solutions and create an economic recovery plan for our state.

As we have these conversations, I want to make sure that I am listening to your needs. Please do not hesitate to reach out to my office with your questions, concerns or ideas that would benefit our community during this challenging time. In the meantime I wanted to provide you with some helpful information if you are experiencing difficulties during the pandemic.

Rent Relief - It was recently announced that there is a new Rent Relief and Housing Assistance Program. This program will provide \$100 million to renters who have experienced or are facing reduced income due to COVID19. Funded by the Federal CARES Act, along with providing monthly rent they offer financial counseling. To learn more and see if you qualify to apply, please visit <http://www.hihousinghelp.com/>. Applications are due by December 28, 2020.

Childcare - As a working mother I know first hand how important childcare is. For parents with keiki at home participating in distance learning, coordinating childcare with your work schedule is more difficult than ever. Hawai'i Children's Action Network is working to let families and caregivers know the rights they have regarding paid sick days and paid leave granted to them under the Families First Coronavirus Response Act. To learn more, please visit the HCAN website https://www.hawaiican.org/rights_paid_leave_covid19

The Child Care Connection Hawaii (CCCH) is a Department of Human Services subsidy program that helps families not only care for their children by helping offset the high cost of child care, but it also allows parents and guardians to continue to provide for their children by maintaining employment, pursuing education and job training. Due to

COVID-19 they have temporarily lifted the income cap requirement to help families out during these difficult times. For more information and to download the application, visit <http://humanservices.hawaii.gov/bessd/ccch-subsidies/>, call (808) 356-5575, or email BESSD.Rescare.Waipahu.ChildCare@dhs.hawaii.gov.

Unemployment - The number one request my office is receiving is for help with issues that have arisen with unemployment applications and denials. While we are not in charge of unemployment and the decisions they make regarding each account, we will do everything in our power to help the process move along. If you continue to have issues or questions regarding unemployment please reach out to my office.

Further Questions - There have been a series of rapid changes regarding new regulations due to COVID19. It seems like every day there is a new change and it can be hard to keep track to ensure we are all doing our best to stay safe and protect our loved ones. If you have questions like I did, One Oahu hotline 768-CITY (768-2489) and oneoahu.org have been my number one go to for fast and accurate answers.

As always, please don't hesitate to contact my office with any questions or concerns about happenings in our community. You can reach me at (808) 586-9490 or at repmatsumoto@capitol.hawaii.gov.

**Paalaa Kai Bakery
Super Saver**

Select 2 bags of your favorite cookies and...
RECEIVE ONE FREE Snow Puff!

This offer is valid between September 23 - October 6, 2020. This offer can be redeemed once per visit, per day. This offer cannot be combined with other promotions, discounts, or daBest VIP card.

www.pkbsweets.com

North Shore Outdoor Circle and Weed Circle

by Vera Stone

North Shore Outdoor Circle has been busy despite 6 months of lockdown. We have been working hard to keep the North Shore clean, green, and beautiful in our own way.

If you noticed the activity at Weed Circle on Saturday September 12, you were seeing the culmination of a great deal of work by a lot of people. At the end of the day, there were two new beautiful trees at Weed Circle. They are planted there in memory of two of our North Shore neighbors. Our past president Patsy Gibson was instrumental in making the NSOC what it is today, and her favorite color was yellow. It took us 4 years, but we finally found a Ni'i Gold tree to plant in her memory.

The history of this tree is complex and we found it with the help of the Pang family.

Sadly, the reason the Pang family was so involved was that they had reached out to us, wanting to do something to honor a family member, Noah Pang, who tragically lost his life recently.

Weed Circle is a driving park that should be enjoyed as you travel around it, so we had to inform the Pang family that they could not have a physical memorial in that spot.

They understood, and volunteered to help us with what could be done. Tree planting.

Many people had expressed anger on Facebook earlier this year about the removal of the banyan tree in the center of Weed Circle. The tree had been infested with gull wasps. The NSOC contacted an arborist who confirmed that the tree was not salvageable. We worked with the State of Hawaii, got permits, and had the tree removed. We were worried that the gull wasps would infect the other trees in the Circle.



Kerry Germain and Ruth Holmberg with the Ni'i Gold Shower Tree planted in memory of past President Patsy Gibson.

Although we lost that magnificent banyan tree in the center, you might notice the ring of trees around the edge. There are over seven different kinds of trees now, including Singapore plumeria, lauhala, rainbow shower trees, palms, and most recently a Queen's White and a Ki'i Gold, provided by the Pang Family. The whole family came together to donate the two trees. They provided heavy equipment and volunteers to dig the holes, plant the trees, help repair the irrigation system, and have volunteered to continue watering the trees so that they take strong root.

NSOC provided an arborist - Doug Demoss, who volunteered his time and expertise. We also provided the irrigation and landscape services of an expert, Jeff Dorr of Dorr to Paradise. Those trees will play a beautiful part in greeting people who come to Haleiwa. When life goes back to some semblance of normal we plan to have a celebration of life and growth for the trees at the circle.

Your North Shore Outdoor Circle is doing a lot to make the north shore - clean, green, and beautiful. All of this takes money. We are lucky to have volunteers, however we provide funds for grooming, recognition, preservation, and for equipment like irrigation. Please consider joining us. The money that you spend on your membership, 25 dollars per year, goes a long way toward keeping our North Shore looking good. That's our kuleana.

If you have any questions, please like us on Facebook, reach out to us on the website at www.outdoorcircle.org or email us at nsoutdoorcircle@hawaii.rr.com



Hawaii
TROPICAL FRUIT GROWERS

30th Annual Conference "Keeping it Local, Virtually"

September 14th to October 1st Online video presentations at:
<https://tinyurl.com/HTFG2020>

Follow up Q&A with our presenters on Friday, October 2nd, from 9:00 am till noon. Link to the live session will be posted on <https://tinyurl.com/HTFG2020>

Featuring: Gabe Schater-Smith, Dr. Noa Lincoln, Dr. Nat Blatter, Dr. Robert Paull, with Ken Love and many others. Introduction by HDOA Chairperson, Phyllis Shimabukuro-Geiser

Watch the presentations and bring your questions to the October 2nd session.

Open to all at no charge.

For More Information:

Ken Love
Executive Director
Hawaii Tropical Fruit Growers
Ken@mycoffee.net
808-969-7026



Senator Gil Riviere Serving Oahu's North and Windward Shores

Opening Up Local Business

In this age of Covid-19, everything is uncertain. Social norms change with breathtaking speed and we are often left scratching our heads, trying to understand what just happened.

Prohibiting large groups may be a credible response to reduce virus transmission, but closing all beaches, parks and trails was never going to slow the spread.

While the parks restriction was roundly panned as ludicrous, there was less public outrage about the second shutdown, which has been particularly harsh on hundreds of "non-essential" businesses who barely survived the first lock down.

In March, we learned Flatten the Curve, the policy of managing infection rates to not overload the healthcare system. Today, it seems many people never heard, or forgot, the second part of Flatten the Curve theory: a flatter curve assumes the same number of people will ultimately get infected, but over a longer period of time.

A couple months ago, I bought a new tennis racket from a small shop on the second floor of a walk-up building on King Street.

Why must small, independent businesses remain closed while big box stores are deemed essential? Why can't you buy flowers from a florist, furniture from a furniture store, a surfboard from a surf shop, or a watch from a jewelry store, but you can buy all of these at a mega store while mingling with hundreds of other shoppers?

Recent changes at the Department of Health indicate they are finally serious about managing the contact tracing and testing programs.

wearing, social distancing and frequent hand washing. Scary as this may be to some, we must learn to live with the virus as it will not disappear anytime soon.

All businesses should soon be allowed to operate with appropriate Covid policies. Some may warrant extra oversight and limitations. If there is an identified Covid cluster, a business should be shut down for deep cleaning and an inspection before re-opening.

Please do not hesitate to call or write if you have any opinions, questions or solutions that might help me better represent you. My phone number is 586-7330 and email address is SenRiviere@capitol.hawaii.gov.

The Soap Cellar
On sale now- Bali carvings 40% off, hats and homemade spritzers 40% off, select jewelry 50% off. Shop at the store Mon, Tues, Thurs, Fri & Sat, 12-5 or shop online www.thesoapcellar.com

Paalaa Kai Bakery Super Saver
Select 2 bags of your favorite cookies and..
RECEIVE ONE FREE Snow Puffly!
This offer is valid between September 23 - October 6, 2020. This offer can be redeemed once per visit, per day. This offer cannot be combined with other promotions, discounts, or daBest VIP card.
www.pkbsweets.com

How Do We Hold Government Accountable?

by Boyd Ready

Enough is enough.

Our lives, jobs and families are clamped down, our major industry wrecked, in fear of an airborne virus that kills especially the infirm and aged. We all want to protect our kupuna.

The Governor and Mayor ordered life shut down, then open, then shut down again, oscillating back and forth. No one can plan. National stores continue to operate, but Hawaii's small businesses had to close, even with the same goods.

Emergency management agencies had prepped for pandemics, then when one hits – the plan is missing, leaders are winging it. Hundreds of contact tracers were reassuringly announced-it turns out very few had been doing it. Unemployment benefits were beefed up by Federal government but the State, overwhelmed, was hard pressed to pay them out.

Fragile kupuna are preyed upon by thieves. Innocent girls and boys are groomed and used by sex traffickers. Perpetrators appear to get off, police are discouraged.

Traffic jams at Laniakea went uncorrected for 17 years – only the lack of tourists opens it up. Badly paved, Kamehameha Hwy. rattles us and wrecks suspensions for years. Finally, the Sunset repaving is out to bid, but the equally bad section near Waimea is not.

Windmills are crammed down on Kahuku, too close to homes and schools. State ag lands at Waialeale and Whitmore languish with ineffective management – chop shops, drug operations and unpermitted camping persist for years.

60 years of control by one political party has meant no accountability. Some people are taken care of, but we all pay high taxes and get bad results. Over 67,000 people in 2018 left Hawaii-newcomers were fewer, for a net of 13,700 out-migration. Our young often don't return. Does government want to replace local people?

How do we get accountability? Change the leaders. No one person can fix all this, but I will bird dog the issues, vote to support our district and keep you informed. I have lived here 40 years and will always be available to hear your concerns. It's time for a change.

Paid for by Friends of Boyd Ready, P. O. Box 396, Kahuku HI 96731 www.BoydReady.com



Former Governor Linda Lingle - "I am pleased and honored to endorse Boyd Ready for State House in Ko'olauloa and the North Shore. I have known Boyd for the past 15 years as a dedicated community volunteer. He seeks, as I always have, open and accountable government. I believe Boyd will do a terrific job representing you in the State House. As he says, "Get Ready—vote!"

**BOYD
READY**

STATE HOUSE (R)

Together We Can Do Better!

www.BoydReady.com
Paid for by Friends of Boyd Ready
P.O. Box 396, Kahuku, HI 96731



Aloha Nui Kākou,

Here is our mana‘o for the week. As always, comments and interpretations are always welcome!

O ke aloha ke kuleana o kāhi malihini.

Love is the host in strange lands.

- In old Hawai‘i, every passerby was greeted and offered food whether he was an acquaintance of a total stranger.

(Puku‘i, Pg. 268, proverb 2453)

One thing that always seems to cross my mind about this 2020 society is connectivity. When I was born, I was raised by a village of family and friends. Our community was built around neighbors who welcomed conversation and didn’t shy away from lending a helping hand. Together, we kept each other safe, respected our spaces, and worked through pilikia.

The changes we’ve seen from our grandparents till now reveals an overwhelming disconnect in people-to-people relationships. Looking at the spaces in which I was raised in, it would be difficult to let my future keiki freely explore without the fear of someone doing something ‘ino (bad, harmful). Which is why this ‘ōlelo no‘eau helps us understand the fundamentals of creating the first healthy interaction. Love brings us to a consciousness that springs new beginnings.

With this week, I encourage all to let aloha flow into new beginnings. The more we embody love and good energy, the easier it is for us to notice it when it crosses our path. When we connect, we create a chain that links us all together through ‘ono vibrations! Like Uncle Kreg of the Hawaiian Force says, “Sometimes you gotta unplug, to plug in!”

Ke Aloha,

Makua Perry

Email makualii@lokoea.org or visit www.lokoea.org



North Shore Chamber of Commerce News

New Member Highlight: ChaneyBrooks' Pro Team Hawaii

ChaneyBrooks is a local company that has been serving Hawaii since 1960. It began with a husband and wife team, who founded a small, one-office company in downtown Honolulu with the basic principle that “whoever can be trusted with little, can be trusted with much.” Pro Team Hawaii is a team affiliated with ChaneyBrooks that is made up of three members – Anthony Provenzano, Kelly Vea, and Jack Roney; all of whom grew up on Oahu and have committed to growing their families and business here.

ChaneyBrooks joined the North Shore Chamber of Commerce to offer properties to industrial and agricultural users. Some of their properties are located at the Waialua Sugar Mill, which can be viewed online here: <https://www.crex.com/lease/properties/178252/hawaii-old-waialua-sugar-mill> and Marconi Point, <https://www.crex.com/properties/451349/hawaii-rca-trade-center>. “We offer the perfect spots for any industrial user to grow and expand their business,” says Kelly Vea.

Contact ChaneyBrooks' Kelly Vea at 808-489-2703 or by email, kvea@chaneybrooks.com and/or Anthony Provenzano at 808-387-3444 or by email, aprovenzano@chaneybrooks.com, if you have an industrial or agricultural use and are in need of more space. View their website at <http://chaneybrooks.com/>

For information on joining the North Shore Chamber of Commerce, contact Roxana at 808-637-4558 or email roxana@gonorthshore.org.



ChaneyBrooks



Waialua Sugar Mill



Marconi Point



PLEASE CONTACT

Kelly Vea: 808-489-2703 kvea@chaneybrooks.com

Anthony Provenzano: 808-387-3444 aprovenzano@chaneybrooks.com



HALEIWA JODO MISSION

- BUDDHIST TEMPLE
66-279A Haleiwa Road
(808) 637-4382

For info on events, please call, e-mail or check Facebook:

Haleiwa Jodo Mission - Buddhist Temple

On YouTube:

Search “KOJI EZAKI” for
Streamed Services
Virtual Bon Dance
Virtual Lantern Floating

Wishing everyone stays happy and healthy



PEARL FILMS

video/photo/graphic design services
weddings, birthdays, events:

pearlfilms.wixsite.com/weddings

family portraits, modeling:

pearlfilms.wixsite.com/photography

online advertisement, presentations:

pearlfilms.wixsite.com/graphics

66-250 Kamehameha Highway, Oahu, HI 96712

phone: 347 - 654 - 2462

email: pearlfilms@mail.com



BANZAI NORTH SHORE WIRELESS

POWER UP FOR SURFING WITH BREADFRUIT

I am not an expert on breadfruit but I sure love the big fruit. September and October are breadfruit season in Hawaii. It's the perfect food to power up for the surf season. The Hawaiian variety "Ulu" has been one of the most important foods for Hawaiians for many years and for that matter the world. The fruit was brought to Hawaii from Tahiti about 700 years ago. The ancient Hawaiian groves were able to feed 75 thousand people and helped raise almost a million Hawaiians. The tree is about 25 feet tall and bears a lot of pounds but grows to as much as 85 feet. It is a super food full of protein, fiber and carbs for energy. It is a good source of antioxidants, calcium, carotenoids, copper, dietary fiber, iron, magnesium, niacin, omega 3, omega 6, phosphorus, potassium, protein, thiamine, vitamin A and vitamin C. It's not that easy to prepare as it has a sticky white sap but once you learn how to cook with it you will always be a fan. In Hawaii the trees were also an important source of wood, craft materials and medicines. Breadfruit trees are one of the highest yielding food plants known. A single tree can produce between 50 to 150 fruits per year. Here's a great informational pdf by the Hawaii Department of Agriculture. Power up athletes! https://hdoa.hawaii.gov/add/files/2014/05/Breadfruit_Production_Guide_web_edition.pdf



Breadfruit

TURTLES TURTLES EVERYWHERE!

Surfers are aware of our turtle friends, we see them all over eating seaweed from the reef as we paddle out and they come up to breathe right next to us while we are surfing. That breath of air sometimes shocking us. But have you noticed that there are tons and tons of turtles around our island these days. They usually nest in the NW Hawaiian islands and French Frigate Shoals but those areas were damaged by storms like Hurricane Walaka recently and the land mass area has declined. Turtles are now nesting in the Hawaiian Islands. NOAA, the National Oceanic Atmospheric Administration, is asking that you call the hotline if you see any nests and of course stay at least ten feet away from any turtles. The Hawai'i Statewide Marine Animal Emergency and Reporting Hotline is 808-256-9840.



Kiyomi Sheppard training for the Molokai Channel Race 2021.

Photo: banzaibetty.com

5 Things to Know About Voting by Mail

By: Office of Elections

If you didn't vote in this year's Primary Election, your mailbox is your ballot box! Hawaii's registered voters will automatically receive their mail ballot packet by October 16 for the General Election. Whether you've voted by mail for the past 30 years or this is your first time, here are a few things election officials want to remind voters:

Check your voter registration. You will only receive your mail ballot packet if your voter registration is up to date. To confirm your voter registration, visit elections.hawaii.gov or contact the Office of Elections. By law, your ballot cannot be forwarded through the mail to a different address. That means, if you have moved or changed your mailing address or name, you must update your voter registration. This can also be done online or by submitting a Voter Registration Application. The deadline to register to vote in the General Election is October 5.

Vote your ballot. Your mail ballot packet will include a personalized postage-paid return envelope, ballot secrecy sleeve, and ballot. Review the instructions and the contests on your ballot and vote the ballot using a blue or black pen. After voting, fold it into the ballot secrecy sleeve, seal it in your return envelope, and sign. Your return envelope must be signed for the ballot to be counted.

Return your ballot. Voted ballots can be returned by mail or dropped off to the City and County of Honolulu, Elections Division. If you are returning your ballot by mail, send your ballot back by October 27. After October 27, you should drop off your ballot to a voter service center or place of deposit established by the Honolulu Elections Division. Your ballots must be received, not postmarked, 7:00 pm on Election Day November 3 to be counted. Find Voter Service Centers and Places of Deposit at elections.hawaii.gov.

Track your ballot. Make sure your voted ballot has been received and validated for counting by visiting elections.hawaii.gov. While there, download your digital #HIVOTED sticker.

There will be no traditional polling places established. Do not go to your previous polling place on Election Day.

During these uncertain times, we encourage you to vote safe and don't delay! To learn more about voting by mail, or to check your voter registration, visit elections.hawaii.gov or contact the Office of Elections at (808) 453-VOTE (8683).

Deadline to Register to VOTE in the General Election is October 5

Asthma

By Naty Hopewell, APRN

Asthma is inflammation occurring in the bronchial tubes. Three things happen: the lining of the tubes swell up, mucus production increases and the muscles around the bronchial tubes press down causing more constriction. All of this causes you to be short of breath, wheeze, cough and suffer from chest tightness, depending on the severity of your reaction. Some people have intermittent asthma and others have it chronically. Treatment is different for each.

For those with chronic asthma, it is important to prevent swelling, mucus production and to relax the surrounding muscles. This is treated with anti-inflammatory medication, specifically steroids in an inhaler. People with severe asthma use inhalers with two medications: an anti-inflammatory and a long-acting bronchodilator. The steroid reduces the inflammation and the bronchodilator opens up the bronchial tubes immediately. Inhalers, such as Advair and Symbicort have both these medications. It is important to rinse your mouth after using an inhaler with steroids to prevent yeast infections orally. In less severe asthma, using an inhaler with just a steroid is acceptable.

In intermittent asthma, which can be triggered by exercise, smoke, a cold or some type of infection, such as sinusitis or bronchitis, using a rescue inhaler such as Ventolin is the treatment. However, if symptoms continue longer than just a few days, oral prednisone or a steroid inhaler may be appropriate. If there is an infection, this also has to be treated. Otherwise, asthma will persist.

If you have chronic asthma and you develop a cold or infection, you may wheeze despite being on a steroid inhaler. You also may need oral prednisone to treat the wheezing, in addition to the steroid inhaler. You can also use your rescue inhaler as a back-up until symptoms improve.

If you develop asthma symptoms, see your medical provider as soon as possible. Remember that wheezing is due to a very narrow airway that is decreasing the amount of oxygen you are inhaling. This means less oxygen to your brain, heart and all your organs. Do not wait. Get help right away.

Ko'olauloa Health Center
293-9231

*We accept everyone regardless of ability to pay.
Improving the quality of life for all. Imua!*

BULLETIN BOARD



Featuring the largest selection of certified organic produce on the North Shore.
 No panic...ours is organic.
 Open 7 days.
 Mon.-Sat. 9am-7pm.
 Sun. 9am-5pm

66-445 Kam. Hwy
 Haleiwa, Hawaii 96712
 Next to the Post Office
 808-637-6729 • 808-637-1922 fax

LTC

Laie Trucking Company, LTD

* Ready Mix Concrete * Recycled Aggregates
 * Pump Service * Hauling * Equipment Rental

PH: (808) 293-8710 PH: (808) 293-1296
 P.O Box 121 FAX: (808) 293-2890
 Hau'ula, HI 96717 laietrucking@hawaiiintel.net

"A LOCAL COMPANY, BUILDING A LOCAL COMMUNITY"

N-C PLUMBING & SUPPLY

Cont. Lic. No. C-8913



- RESIDENTIAL & COMMERCIAL SALES & SERVICE
- CONTRACTING & DESIGN • HOME PLUMBING SERVICE
- PLUMBING FIXTURES, HEATERS • FREE ESTIMATES

Nestor P. Calilao (Owner) Bus: 637-8662
 P.O. Box 769 Res: 638-5157
 Waialua, HI 96791 Cellular: 372-8718

Saccoccio & Lopez

ATTORNEYS AT LAW

TRIAL LAWYERS

Serving Hawaii since 1984

637-7611

Personal Injury -Property damage
 Criminal Law - Traffic Crimes
 Landlord Tenant - Bankruptcy

Tavares company

We offer great service!

Thiago Tavares
 Welding repair

(808) 304-1042

thiagoamtavares@hotmail.com
 67-256 Goodale Ave, Waialua, HI



Estate & Garage Sale

at Whitfield Estate in Sunset Hills

Friday, October 2, noon to 4pm &

Saturday, 9am-2pm, Sunday, 9am-noon

59-380 Wilinau Road

Directions: up Pupukea Rd, left at top on first Alapio Rd, follow into Sunset Hills third house on left (white w/ green trim) park on street, bring mask and cash.

Some junk, some beautiful stuff, some pretty paintings at a great price!

For information call Pamela Whitfield 425-443-1660

Munden Design & Build

Lic.#BC19632

Design • Plans • Permits • Construction

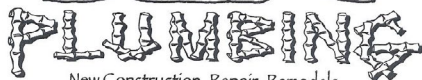
Additions & New Residences

808 391-8616

Providing quality work since 1978

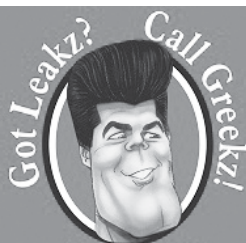


"IF YOU BUILD IT, WE WILL PLUMB"



New Construction, Repair, Remodels

Dale Christensen C-29856 (808) 368-1473



372-1820

Greekz Plumbing

Greekz Plumbing

License# C-32939
 Phone 372-1820



KATHI LEE ALBIAR
 OWNER/BROKER - RB 17327

808-358-4139
KATHI@ALBIARREALTY.COM
WWW.ALBIARREALTY.COM

SALES & PROPERTY MANAGEMENT SINCE 1993



to maintain the Waimea Library and Herbarium.

We wholeheartedly support Hi'ipaka and encourage the community to please buy an Annual Pass knowing you will be helping to support this remarkable living treasure, especially in these trying times. Come and enjoy and support Waimea Valley.

Mahalo Nui Loa,
Diane Anderson
Current WAF President

Aloha,

The Aug. 26, 2020 NSN's article "Waimea Valley, A Unique Preservation on the North Shore of Oahu" written by the Waimea Valley Botanical staff, was fantastic! Such a great reminder about this treasure located right here in our North Shore backyard. As residents, we can best show our support by buying an Annual Passes , now at a discounted cost of only \$30 for an Individual and \$60 for a Family.

The Waimea Arboretum Foundation (WAF) a separate 501 (C) (3) non-profit founded 43 years ago, way back in 1977, mission is to support and advise the Scientific and Educational work of the Botanical Dept of Hi'ipaka, LLC in conservation through the acquisition, propagation, and the study and education of Endangered Plant Species, including the distribution of plants to other botanical gardens for safe keeping and to preserve the gene pool and germ plasm of these endangered plants in the event of severe weather and climate change. We also help

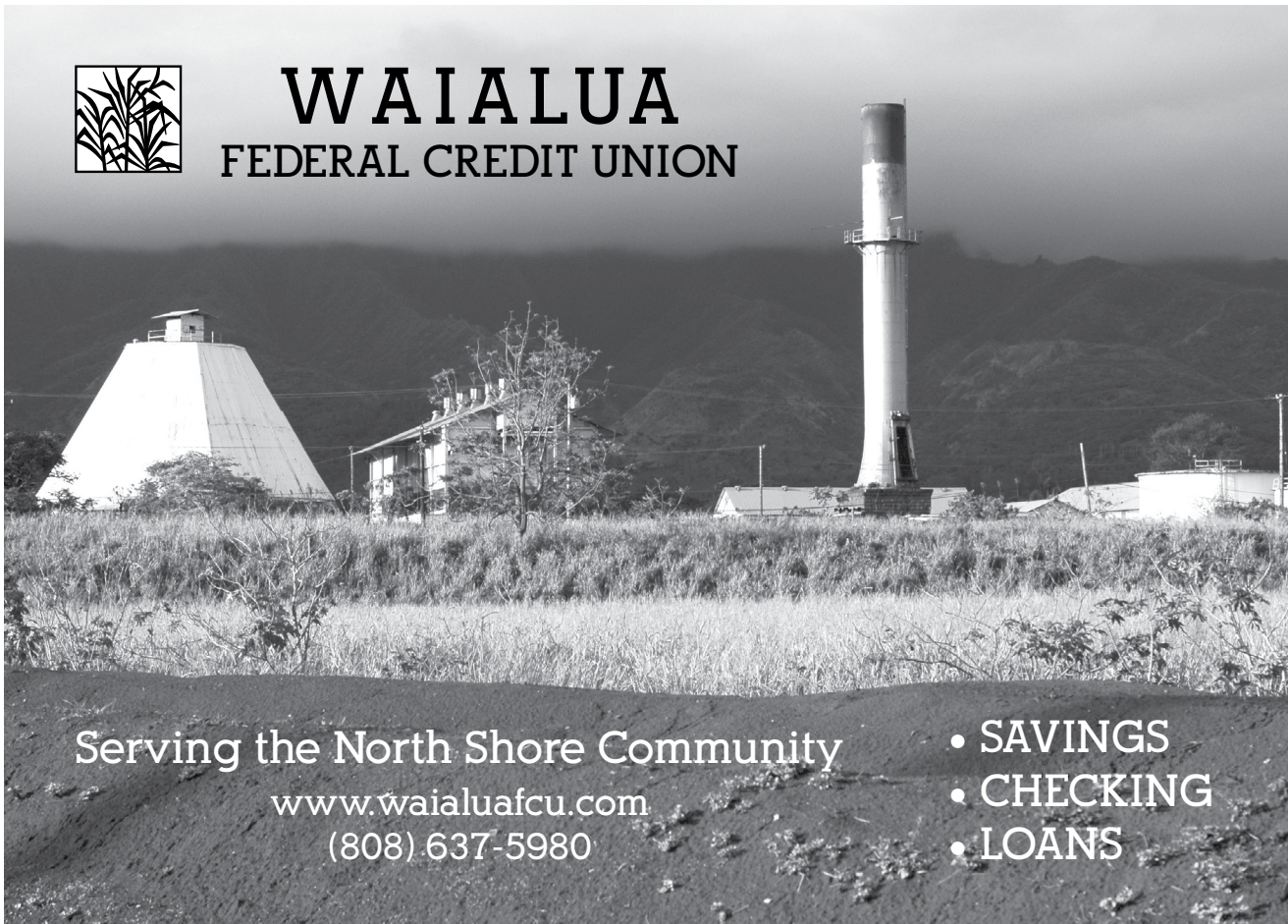
Dear Editor-
Auwe

The surf has come up and neighbors on Pikai and Kaiaka Streets are already complaining about the abundance of foil surfers who speed down our street at dawn to catch waves. They have woken us, they have blocked the dead end of the street so the dumpster truck can't get through, they have blocked the mail boxes and dumpsters. While they have energy to surf for hours, we hope they have the energy to remember it is a family neighborhood on a single street and not a public park. Please respect the people who live there.

Thank you.
Anonymous



WAIALUA FEDERAL CREDIT UNION



Serving the North Shore Community

www.waialuafcu.com
(808) 637-5980

- SAVINGS
- CHECKING
- LOANS



CLASSIFIEDS

The North Shore News is published every other Wednesday and mailed free of charge to all North Shore homes and businesses.

PRESS RELEASE POLICY: Submit press releases, mail or email to Editor, North Shore News, P.O. Box 117, Haleiwa, HI 96712. Please type your releases and keep them shorter than 200 words unless they are of an unusual news interest. Releases should be viable news stories and are published on a **space available basis only**, with priority given to those received in our office first. You may attach photos. We are not responsible for the return of any photos. All materials are submitted at owner's risk. We reserve the right to edit and/or refuse all submissions including advertising.

EDITORIAL POLICY: We welcome articles and letters from our readers. Letters to the Editor are published on a space available basis only and preference is given to shortness of length, and quality of content. We prefer to run not more than one letter, per person, per 6 month period. Letters subject to edit.

Views expressed by our contributing writers and advertisers do not necessarily reflect the view of the management and staff of the North Shore News. All rights reserved. Reproduction in whole or part without permission is prohibited. © 2020.

SERVICES

SHORE ELECTRICAL SERVICE
New Const-Remodels
638-0049/Lic#C20777

Andres Plumbing
All your plumbing needs
808-256-7337 Lic#C24500

**Computer Problems?
I can fix any MAC or PC
Chris 371-3089**

Hawaii Tree Co.
Trimming & Removal
Professional-Reliable
Free Estimates
462-2749

ALOHA COMPUTER
PC/MAC Repair/Virus
Removal
**MOBILE COMPUTER
REPAIR SERVICE**
372-2667

**CS EuroCars Kapolei
Mercedes Repair Shop**
with low labor rates
ASE Certified Technician
27 years experience
2116 Lauwiliwili St. Unit 104F
Kapolei, HI 96707 - Under New mgmt.
808-682-1957

**ANGELS
PLUMBING**
Repairs
Remodeling
Renovation
638-7878
Lic. #C12004



**DOG/CAT NAIL
TRIMMING**
At your home- only \$20.
Call 808-388-5336

**HOT YOGA
NORTH SHORE**
ZOOM Classes everyday!
Keep practicing, be well.
www.hotyoganorthshore.com

HARVEY'S TOWING LLC
24 hr Towing Service
Lockouts, Jumpstarts &
Recovery. Specializing in
opening locked car doors.
Call anytime 478-0333

**KQNS 107.3 FM
CHRISTIAN RADIO**
Inspirational, Health
Music, Addictions, Mar-
riage,
Prophecy, Stories, etc.

Would you like to get the
North Shore News via
email in COLOR! Just send
us a message at:
NSNHaleiwa@gmail.com
and you get the NSN
online every two weeks!

BUSINESS SERVICES CENTER
Fast & Convenient Copy, Fax, Scan,
Computer/Internet, Laminate, & More



*Across from
the Haleiwa
Post Office*

637-4558 • gonorthshore.org
#gonorthshore

GERMAN CAR SERVICE
Professional-Qualified
Technician
Call Gary
637-6800

North Shore Food Bank
@ nsfoodbank

Wanted to rent a small
space for lunch wagon to
park on 5 days a week.
Great food too!
Wes 368-1366

HELP WANTED

NOW HIRING



Apply in Person
1116 Whitmore Ave
(808) 621-3207

FOR SALE

2002 Lexus ES 300, 100k miles,
good condition, leather seats,
sunroof, white, always in carport
- asking \$4500 - under blue
book. Pupukeya. Call Rhonda at
927-9208.

Next Issue - Oct. 9 2020
Deadline Date - Oct. 21, 2020

**Marianne
Abrigo, Properties**



Specializing in -
North Shore
Real Estate
Ask for our list of avail-
able properties and/or a
free market analysis.

Marianne M. Abrigo
"Realtor since 1974"

Office 637-3511
Fax 637-0777
Email mabrigo222@aol.com

Editor & Classifieds
Linda Seyler

Typography
Downtown General Store

Contributing Writers
Tom Jacobs
Betty Depolito
State Representative Lauren Matsumoto
Senator Gil Riviere
Councilmember Heidi Tsuneyoshi

Photography
Banzai Productions

Facebook: NSNewsHaleiwa

HOW TO CONTACT THE NORTH SHORE NEWS

Letters to the Editor, and other items submitted for publication consideration may be sent to us via:
MAIL: P.O. Box 117, Hale'iwa, HI 96712
E-MAIL: NSNHaleiwa@gmail.com
NSN4Linda@gmail.com
PHONE: (808) 780-8037
www.northshorenews.com



Please recycle this newspaper.

#GONORTHSHORE



LOCAL LOVE

ON THE NORTH SHORE

WWW.GONORTHSHORE.ORG/KAMAAINA

SUPPORT LOCAL BUSINESSES
AND SAVE! *NEW* KAMA'AINA
OFFERS AVAILABLE!

WANT YOUR BUSINESS TO BE INCLUDED?
PLEASE EMAIL ROXANA@GONORTHSHORE.ORG

MAHALO TO OUR AMAZING COMMUNITY!