



“E Ala Na Moku Kai Liloloa”

In This Issue:

Remembering Dr. Virginia Ann Abshier
Page 6

Sunset Beach Bike Path...On the Mend
Rex Dubiel Shanahan
Page 16

ISO: In The Wake of Technology
Jason Bitzer
Page 17



NORTH SHORE NEWS July 29, 2020 VOLUME 37, NUMBER 11



Derek Ho at Pipe! Photo: banzaibetty.com

The North Shore Loses a Legend Derek Ho (1964-2020)

Derek Ho, who with his brother, Michael, his niece Coco, and nephew Mason represented a legendary North Shore surfing family, passed too young and too soon on July 17th at age 55.

Born and raised in Kailua, Derek mastered surf breaks on the windward side and in town before moving to the country and becoming an expert on North Shore surf lines. As he said, “If you

can handle Pipe, you can handle anything.” Derek backed up that quote by becoming World Surfing Champ in 1993 (at age 29 the first native Hawaiian champion) and winning four Triple Crown of Surfing championships ('84, '86, '88 and '90) while competing in twenty-four Triple Crown events and a two time champion in the Pipe Masters winning the world title in 1986. In 2019 Derek was honored in California’s Walk of Fame with a “Star” in Huntington Beach.

Aloha Derek. Gonna miss you in the lineup.

PERMIT NO. 1479 HONOLULU, HI PAID U.S. POSTAGE ECRWSS PRSRT STD	RESIDENTIAL CUSTOMER *****ECRWSSEDDM****
--	--

NORTH SHORE FOOD BANK

IG:@nsfoodbank

Sponsors: Hawaii Food Bank, Aloha Harvest & HAM

DISTRIBUTION UPDATE

Wednesday, August 5, 12 noon, Kaiaka Bay Beach Park

Wednesday, August 19, 12 noon, Kaiaka Bay Beach Park

Wednesday, August 26, 12 noon, Kaiaka Bay Beach Park



For more information and donations contact : Linda (808) 780-8037



AMEMIYA
MAYOR 20/20

A Fresh Perspective for O'ahu

I'm running for Mayor because O'ahu needs new leadership with a fresh vision for the future.

As Mayor, my priorities will include:

- **Preserve** open space and promote local farming
- **Prioritize** residents as we reopen and carefully manage tourism
- **Invest** in parks, trails, bike paths and beach access
- **Reform** Department of Planning and Permitting to enforce against illegal activity
- **Maintain** the unique character, culture, and experiences of O'ahu

I hope you will join me in building a better future for O'ahu for generations to come.

I humbly ask for your support,
Keith Amemiya

AmemiyaForMayor.com

Paid for by Amemiya for Mayor | PO Box 1777, Honolulu, HI 96806

The Hale'iwa Family Dental Center, Ltd.



- Adults and children
- Most cases completed in 4-12 months
- Clear braces available
- Lower cost
- University tested
- Used for over 20 years

Produced by Todd R. Okazaki and Staff

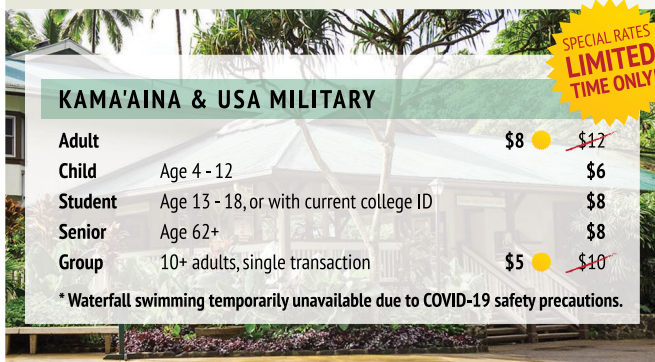
"Straighten those crooked teeth that have bothered you for years"

Conveniently located behind First Hawaiian Bank in
Historic Hale'iwa Town
Call 637-9652 for your reservation

E HO'I HOU MAI • PLEASE RETURN

We hope to see you here soon! Waimea Valley is now safely reopen, with physical distancing best practices in place to keep our guests and staff safe. And if you're unable to visit in person, please consider donating or gifting an annual pass, to support the Valley's ongoing operations and enable us to preserve this special place for generations to come. Mahalo!

WE ARE OPEN



KAMA'AINA & USA MILITARY

Adult		\$8	●	\$12
Child	Age 4 - 12			\$6
Student	Age 13 - 18, or with current college ID			\$8
Senior	Age 62+			\$8
Group	10+ adults, single transaction	\$5	●	\$10

* Waterfall swimming temporarily unavailable due to COVID-19 safety precautions.

SPECIAL RATES LIMITED TIME ONLY!



KAMA'AINA & MILITARY DISCOUNTS

We've lowered select rates to thank our local community for their support. With O'ahu tourism on pause, there's never been a better time to visit us here at the Valley.

MAKE A TAX-DEDUCTIBLE DONATION

After an unprecedented 11-week closure, we need your support to keep our doors open and allow us to preserve this sacred ahupua'a for all. Donate today at waimeavalley.net.



ANNUAL PASS Local residents only

Individual		\$30	●	\$50
Family	2 adults + up to 6 children age 18 & under	\$60	●	\$100
Lifetime		\$600	●	\$1,000

SPECIAL RATES LIMITED TIME ONLY!



OPEN KITCHEN OAHU

LOCALLY SOURCED

Comfort & Wellness
Options Available

HIGH QUALITY

@OPENKITCHENOAHU
OPENKITCHENOAHU.COM

DISCOUNTED ANNUAL PASSES

Give the gift of Waimea Valley admission! Individual and family passes are valid for 12 months from purchase date. To buy, visit the Ticket Booth or email info@waimeavalley.net.

OPEN KITCHEN OAHU

A branch of Waimea Valley's Ke Nui Kitchen, Open Kitchen Oahu offers daily chef-prepared, family-style meals. Also now offering "Ono Meal" subscription plans!



HOURS: 9AM - 5PM DAILY

CALL: (808) 638-7766

@WAIMEAVALLEY  

@WAIMEAVALLEYOAHU 

WHERE HAWAI'I COMES ALIVE

WAIMEAVALLEY.NET

HOW DO YOU CONTINUE HEALTH CARE IN TIMES LIKE THESE? HERE ARE A FEW ANSWERS.

If you're looking for health care, it's important that you know your options. The requirements for Medicaid and Medicare have changed due to recent events, so you may be eligible even if you weren't before. We were created for times like these, so you'll be covered no matter what.

MEDICAL AND MORE AT NO COST

TELEHEALTH

We'll help you get set up so you can meet with your doctor via video or on the phone.

BASIC DENTAL FOR ADULTS

Includes a dentist visit, cleanings, x-rays and more. Available to both Medicaid and Medicare individuals.*

FAMILY MEDICAL

Stay healthy with full medical, prescriptions, and more.

To enroll in AlohaCare, call 973-6370 Toll-free: 1-877-973-0712
TTY/TDD: 1-877-447-5990 or visit AlohaCare.org
To apply for Medicaid, visit medical.mybenefits.hawaii.gov
or call 524-3370, or 1-800-316-8005 on the Neighbor Islands.



ALOHACARE

**Available only to adult members who do not have any other medical or dental insurance.*

WE NEED YOUR INPUT! Rehabilitation of Streets Unit 93 (Kamehameha Highway Improvements in Hale'iwa) Hale'iwa, Waialua District, O'ahu, Hawai'i

On behalf of the City and County of Honolulu (CCH), we invite you to visit our new project website for the Rehabilitation of Streets, Unit 93 (Kamehameha Highway Improvements in Haleiwa) Project.

The project proposes to improve shoulders, relocate existing utilities, and install planters and bollards. The improvements would occur within the Hale'iwa town corridor, along Kamehameha Highway between the 'Opae'ula Stream Bridge, also known as "Twin Bridges", and the Anahulu River Bridge, within the Hale'iwa Special District. Shoulder improvements will include permeable pavers (where space is available) to provide an improved pedestrian experience and to reduce storm-water runoff and existing ponding issues. The improvements also include installation of planters and bollards to provide a vertical, physical separation between the improved shoulders and roadway.

Beginning July 15, 2020, please visit the project website for an online presentation of the proposed types of planters and bollards for the project and participate in an online survey. The website address is: <http://www.honolulu.gov/completestreets/haleiwa>

The purpose of the online survey is to solicit public input regarding the proposed styles, materials, and colors that will be used for bollards and planters in the project. The online survey will be available until Friday, August 7, 2020.

Should you have any questions about the online survey, please contact Gordon Ring at (808) 842-1133.



**Councilmember
Heidi
Tsuneyoshi**
Serving You in District 2

Aloha,

The coronavirus pandemic has impacted every aspect of our lives, especially economically. Unemployment reached a peak of 22% in May and many businesses are struggling to stay open. In an effort to provide financial relief throughout the nation, the Federal government passed a \$2.2 trillion funding package through the CARES Act. In combination with CARES funding and other federal grants the City and County of Honolulu received almost \$500 million to help residents and businesses in this unprecedented reality we are now facing.

The City Council's Committee on Economic Assistance and Revitalization adopted a resolution that created stakeholder group of business and community leaders to discuss efforts to help our island's economy. More specifically, the group is tasked with discussing mechanisms or ways in which the City can best utilize federal funding to assist businesses and residents feeling the hardship of the down economy, as well as make recommendations for City policies to support and promote sustainable local economy. I was honored and excited to nominate North Shore resident and business owner, Ed D'Ascoli who I felt exceeded all the criteria to be an effective member of the group. Ed brings with him a wealth of knowledge and an energy to talk with North Shore businesses to get an accurate view of how they are hurting and what can be done to assist.

The stakeholder group has discussed and are ready to recommend ways to improve the processing of CARES funding for businesses and residents. Of the \$25 million that has been allocated for residents, approximately \$10 million has been disbursed. One of the big obstacles in expediting the distribution of funds is the extremely lengthy processing time it takes for each applicant. The Federal guidelines require each household to submit extensive documentation to apply for assistance which can take 3-4 hours to process and must be done monthly. The stakeholder group is proposing the development of a network of non-profits within each community that would be the first point of contact in assisting each applicant with their documentation. Once completed, the applications would be forwarded and processed by the appropriate agency, which would streamline the whole process and reduce wait times tremendously.

Many businesses were quick to apply for assistance early, not expecting the pandemic to continue as long as it has and received as little as \$1,000 in reimbursement through the City's Small Business Relief and Recovery Program. The stakeholder group is seeking to allow businesses to apply more than

once and increase the maximum amount that can be approved to more than \$10,000. The group is also looking to expand the amount of participating credit unions, which approve these applications, to allow more businesses to apply for relief.

In addition, the group is working in the short-term for job retraining for existing positions. University of Hawaii community colleges has funding to retrain up to 4,000 people this year, which is based on current positions available including the high demand from the health care sector.

I would like to sincerely thank Ed for his willingness to serve his community and our City. His contributions have been an invaluable part of this process. I am very grateful for the time, expertise, and energy he has brought to the process. MAHALO!

In regards to the Ko'olaupua Sustainable Communities Plan, the bill will be heard in committee in August and the amendment I introduced can be found at [http://www4.honolulu.gov/docushare/dsweb/Get/Document-265296/CC-183\(20\).pdf](http://www4.honolulu.gov/docushare/dsweb/Get/Document-265296/CC-183(20).pdf). My amendment removes the housing development in Lai'e as well as moves the community growth boundary back to its original location. It also includes some updated language provided by the Department of Planning and Permitting to make the plan consistent with the current time.

Mahalo again for your continued support. If you have any questions please do not hesitate to contact me at 768-5002 or htsuneyoshi@honolulu.gov.

YOUR HOMETOWN LOCAL BAKERY
Always Made Fresh

PKB
"Da Best"

www.pkbsweets.com

**Regular customer to PKB?
Be sure to become a FREE
daBest VIP card member
to save on each visit!**

VIP FREQUENT SHOPPER CARD

This card belongs to:
Ms. Preferred Customer

No expiration. Please see back for membership benefits and terms.

Home of Sada's Malassadas and Snow Puffies
www.pkbsweets.com



Dr. Virginia Ann Abshier 1963 – 2020

Everyone who remembers Virginia Abshier will easily recall a special quality about her that they loved. Her quick wit. That infectious smile. Her generous spirit. These, and so many other facets of her personality, defined the exceptional person that she was.

Our beloved Virginia passed away from sudden gastrointestinal complications on Tuesday July 7, leaving behind innumerable heartbroken family, friends, patients and colleagues.

The daughter of Annette and James R. Billingsley, Virginia was born in Hillsboro, TX. As a child she loved her brother Mark and, much to his dismay, was his constant shadow growing up. Early in high school when the rest of her friends were trying to figure out which way was up, Virginia was working almost full-time in healthcare, laying the foundation for a life of service. She graduated from Huntsville High School in 1982. Throughout her life, Virginia put down roots wherever she lived. With an easy smile and curiosity about others, she effortlessly created networks of lifelong friends along the way.

Virginia graduated from the University of Texas at Austin with a BA in Philosophy in 1988. After traveling across Europe for two years, she decided she wanted to dedicate her life to “playing with humans.” She graduated from the University of Texas Southwestern Medical School in 1996 with the goal of becoming a country doctor in the mountains of Oregon. Towards that end, Virginia completed her Internal Medicine residency program at Providence Portland Medical Center. Her contempt for hierarchy, along with her ability to tell stories, and make people laugh was endearing (appalling?) to her fellow residents. Virginia didn’t care if you were a rotating medical student, an attending physician, or a stranger in a book club. She loved people, and when she met a kindred spirit, and she met many, she would open her arms and embrace a new friend.

Her plan to settle in Oregon changed when

she met Kevin Kelly, the love of her life, while on vacation in Hawai‘i. After finishing her residency, she returned to Hawai‘i where she married Kevin and opened her first practice in Kahuku in 2000. She instantly fell in love with her patients and the North Shore community. With warmth and compassion, Virginia conveyed a mutual respect for everyone and her generosity and caring were without obligation. Her cheerful greeting of “How are you doing today?” comforted even the most nervous patients. She lived the Aloha Spirit before she knew what it was called and always felt she had found her true calling serving the rural communities of Oahu’s North Shore.

Virginia moved her practice to Haleiwa in 2007, occupying the office of Dr. Seiichi Miyasaki, Waialua’s first non-plantation doctor, who had retired decades earlier. Patients quickly returned to the clinic that Virginia made her own with her signature eclectic décor and pets-welcome policy. In a world of managed care and medical bureaucracy, Virginia was able to build her solo practice on the North Shore, providing an invaluable service. She was dedicated to her staff and deeply connected to those she cared for. Virginia was always on call! In a multitude of ways, Virginia gave back to her community. Whether it was hosting a blood drive, collecting clothing for the needy or inviting homeless people to use the clinic’s bathroom when they had no other place to go, she lived aloha in so many ways.

Outside the clinic, Virginia enjoyed hanging out at home with Kevin and their menagerie of pets. Their latest rescue, Oscar, is a very special kitty who quickly found a place in her heart. She was an inspired hostess and gourmet cook, and loved nothing more than filling her house with people to feed and care for. Virginia loved hosting friends and was generous with her home and hospitality. Visiting Virginia was always a treat, with loving hospitality, trays of delectable pupus and loads of lively conversation.

Virginia is survived by her husband, Kevin Kelly of Waialua and her mother Annette Billingsley of Glen Rose, TX and is predeceased by her father, James R. Billingsley, and brother Mark Billingsley.

Due to COVID-19 a celebration of Virginia’s life will be scheduled at a future date. To honor her life and her commitment to her community, her family asks that in lieu of flowers donations be made in her name to the following North Shore organizations or the charity of your choice.

- North Shore Economic Vitality Partnership (nsevp.org)
- Malama Pupukeya-Waimea (pupukeyawaimea.org)
- North Shore Community Land Trust (northshoreland.org)
- Keep the North Shore Country (keepthenorthshorecountry.org)



**Senator
Gil Riviere**
Serving Oahu's North and
Windward Shores

Quarantine Statistics and Close of the Legislature

Few would argue that enforcement of the 14-day quarantine has been swift and effective. The neighbor islands have proven far more determined and effective than Oahu in tracking down quarantine violators, even though the vast majority of people subject to quarantine are on this island. It occurred to me that we pay close attention to the daily infection counts, but there is only sporadic news regarding quarantine violator arrests.

Last month, I began asking for regular public reporting of enforcement statistics. The Senate Committee on Covid-19 Response has worked long and hard with the administration and state agencies to implement policies such as the quarantine. At the latest committee meeting, the Attorney General agreed to provide weekly reports for number of leads, investigations, arrests, etc.

If we are going to continue the quarantine after September 1 when the negative test exemption is allowed for arriving passengers, we should make sure the quarantine is an effective deterrent to those who would try to evade our safety protocols. What gets measured gets attention.

The 2020 Regular Legislative Session finally came to a close on July 10, 2020, two months after the regularly scheduled adjournment. After beginning the session normally, we went into a prolonged recess when the pandemic shut down much of the state. We returned for two weeks in May to amend the state budget to fill a one-billion-dollar budget shortfall, about 1/8 of the general funds. We returned again in June to finalize CARES Act funding for pandemic response, to advise and consent on Governor nominations, and to pass a limited number of bills. Additional, severe budget cuts will likely be waiting for the next Legislature in 2021.

Several of the Governor's nominations were in jeopardy of rejection by the Senate on the final day of the session. On that final day, with the possibility of losing four votes, the Governor withdrew his nomination of Rona Suzuki for Director of the Tax Department. Craig Hirai, nominee for Director of Budget and Finance sailed through, but Damien Elefante, nominee for Chair of Labor and Industrial Relations Appeals Board, was confirmed on a 16-9 vote.

The final vote of this year's session was on the nomination of Chris Yuen to the Board of Land and

Natural Resources. I was strongly opposed to his confirmation because of various positions he has taken in recent years, each one at odds with staff recommendations and community input.

Mr. Yuen led the BLNR decision making in support of Na Pua Makani's permits to build the monstrosly tall wind turbines in Kahuku. When I asked him what he would say to the people of Kahuku, he said he hoped they would look at the turbines as a point of pride.

The day before the vote, Governor Ige appointed a new Senator to replace the late Senator Breene Harimoto. The appointment altered the vote enough to secure confirmation by a soft 16-9 vote, four of which were "Yes, with reservations."

Please do not hesitate to call or write if you have any opinions, questions or solutions that might help me better represent you. My phone number is 586-7330 and email address is SenRiviere@capitol.hawaii.gov. Follow us on Facebook or online at SenatorRiviere.com. Mahalo.

VOTE

Mail your ballot by August 5th or drop off
by August 8th at Kahuku Community Center
or Mililani Park and Ride



**YOUR HOMETOWN
LOCAL BAKERY**
Always Made Fresh

www.pkbsweets.com

PKB SUPER SAVER

**Simply purchase 5
Cinnamon Finger Puffs
or Assorted Turnovers**

GET 1 FREE PASTRY
of your choice! (equal of lesser value)

This offer cannot be combined with other offers, promotions, or daBestVIP discount. This offer is valid between July 29 - August 11, 2020.





**Representative
Lauren
Matsumoto
Serving You in District 45**

Aloha friends and neighbors!

The 2020 legislative session came to an end July 10. Although the COVID-19 pandemic disrupted our usual session schedule, we were able to finish strong and address some of the major concerns for Hawaii residents during a time of uncertainty. The session's primary theme became distributing Federal Coronavirus Aid, Relief, and Economic Security Act (CARES Act) funds and adjusting the state's budget to respond to the decrease in state revenue due to a pause in tourism.

Two bills were passed through the legislature in order to supplement the economic shortfall and support families and businesses. SB 75 and SB 126 ensure that CARES Act money will help provide assistance to renters and homeowners, small businesses and schools. It will also help purchase and distribute necessary equipment to hospitals, childcare facilities, elderly care facilities, businesses, non-profits, and schools for personal health protection as well as food assistance for families in need. Funding helps to improve health screenings at the airport to continue to ensure the safety of our communities. Funds will also go to support additional weekly unemployment benefits to eligible recipients, and other programs as determined by the Governor.

The state's finances will continue to be considered in the coming months and will be of primary importance in the upcoming legislative session next year. This has been a very difficult time for our community, but I am confident that we can work together to make up for what was lost and diversify our economy so that we will be stronger than before. Government programs will continue to work hard to meet the needs of Hawaii residents through unemployment insurance, small business assistance, and investment in schools and infrastructure.

In total, 78 bills were passed by the legislature and sent to the Governor to consider signing into law this session. The following are notable bills that were passed by the legislature this session and sent to the Governor for his consideration.

HB2148 extended Hawaii Family Leave plans to include grandchildren allowing grandparents to take leave to assist with their grandchildren's care.

HB2425 expands the definition of domestic abuse to include coercive control. Coercive control is defined as a pattern of threatening, humiliating, or intimidating actions. This behavior seeks to take

away the individual's liberty or freedom and strip away their sense of self, forcing them to become dependent on their abuser. This bill will allow for greater protection of those seeking help from dangerous circumstances.

HB117 was passed due to the COVID-19 outbreak, freezing pay increases for members of the Executive, Judiciary and Legislative branches, including all elected members of the legislature. This will allow budget spending to prioritize areas affected by the pandemic.

I am proud to be an introducer and co-signer on HB 2054 and HB 2060, two bills which protect both employees in their workplace and protects victims of domestic abuse from retaliation when reporting abuse and harassment.

To read about these bills and more you can visit the Hawaii State Legislature website at www.capitol.hawaii.gov.

As always, please don't hesitate to contact my office with any questions or concerns about happenings in our community. If you have any questions as to why I voted a certain way on a bill, please do not hesitate to contact my office and ask for clarification. You can reach me at (808) 586-9490 or at repmatsumoto@capitol.hawaii.gov or visit repmatsumoto.com



ENGEL & VÖLKERS®

Honolulu

A REAL ESTATE COMPANY

Whether it's around the corner or across the world, we are here to help you achieve your goals.

Local Expertise with a Global Reach.

At Engel & Völkers Honolulu, our passion is to deliver a luxury real estate experience to each of our clients. When considering buying or selling a property, it is essential to work with true market experts who take the time to understand your unique real estate goals.

Call for a detailed evaluation of your property.

Kathi White

Real Estate Advisor, RS-60970

+1 808-721-4662

www.KathiWhite.evrealstate.com

745 Fort Street Mall, Suite 608 · Honolulu · Hawaii 96813
4510 Salt Lake Blvd, Suite B4 · Honolulu · Hawaii 96818
4204-4218 Waialae Avenue, Suite D10 · Honolulu · Hawaii 97601

Engel & Völkers Honolulu is a proud sponsor of
Special Olympics Hawai'i & North Shore Chamber of Commerce

©2020 Engel & Völkers. All rights reserved. Each brokerage independently owned and operated. Engel & Völkers and its independent license partners are Equal Opportunity Employers and fully support the principles of the Fair Housing Act.



**Laniakea Bottleneck Broken
Relief at Last**

Dear Editor

Bill Saunders, attorney for the Save Laniakea Coalition announced that a settlement has been reached between the Coalition, the City and County and the Hawaii Department of Transportation ["D.O.T"] at a settlement conference on June 18, 2020.

According to the terms of the settlement agreement, the City's parking lot will be enlarged to make space for waiting and through lanes. The capacity will remain at approximately fifty cars. The entrance at the Haleiwa town side will be for Waimea bound traffic and left turns prohibited. Exit at the Waimea end will be right turn only.

Larger tour busses and vans will be prohibited.

The D.O.T. will install guardrails along the mauka shoulder with openings at the extreme ends where marked sidewalks for pedestrians will be funneled.

Perhaps best of all D.O.T. will finally move to construct a bypass road that has been on North Shore residents' wish list for thirteen years.

Aloha Sanford Lung

So, What is It?

Dear Editor:

According to the President and CEO for: The clean-up project located next to Sunset Beach Elementary School, is simply a demonstration farm, nothing more, nothing less! There have been rumors floating that this property will become another Shark's Cove.

It was never, is not, and never will be the new Shark's Cove! As a long -time resident of Hawaii, and especially North Shore, I know how near and dear Shark's Cove is to the North Shore residents. I would never attempt to imitate, or steal Shark's Cove's place in the community, they are safe from me! I am being facetious of course, nothing funny about it.

So what is it? It is a farm, and educational center, and is going to offer healthy choices, fresh fruits and vegetables and other dishes to the residents of the North Shore. There will be a school program where students will be able to learn about old world farming practices, how to be less reliant on petro-chemicals, and use sustainable farming methods.

Thank You,
Jeff Ray

North Shore-Grown Cacao used to Create World-Class Chocolate

If Hawaii is known one day as the Chocolate state, it would likely be attributed to Dole Food Company Inc.'s lead in growing cacao right here on the North Shore.

The original 20-acre cacao orchard planted in the late 1990s proved its worth when the chocolate made from its harvest was recognized as world class. Thus Waialua Estate Coffee & Chocolate was created by Dole to showcase the chocolate, as well as its 155 acres of Kona Typica coffee. Expansion plans during the past few years have amounted to more than 85 acres of Waialua Estate cacao now in cultivation.

In January of this year the Good Food Foundation of San Francisco presented Dole's Waialua Estate Milk Chocolate with the Good Food Award. The highly vetted awards competition is the Foundation's homage to national food and drink crafters committed to flavor excellence as well as environmentally sustainable and socially just production practices.

Waialua Estate's tree-to-bar Chocolate Factory is in Dole Cannery, similarly following the circle of life story of Dole Food Co.'s roots and legacy in Hawaii.

While pineapple is still Dole's signature crop in Hawaii, the agricultural diversification of Waialua Estate is generating new excitement for the state and its worldwide visitors. Visit: www.dole.com, www.WaialuaEstate.com



NOW HIRING

Apply in person at:
1116 Whitmore Ave, Wahiawa

Field & Factory Workers, CDL Driver, Security Guard

Hours: Mon-Fri 8:00 am - 12:00 pm & 2:00 pm - 4:30 pm
Inquiries: (808) 621-3207
An Equal Opportunity/Affirmative Action Employer

#GONORTHSHORE



LOCAL LOVE

ON THE NORTH SHORE

WWW.GONORTHSHORE.ORG/KAMAAINA

**SUPPORT LOCAL BUSINESSES
AND SAVE! *NEW* KAMA'AINA
OFFERS AVAILABLE!**

**WANT YOUR BUSINESS TO BE INCLUDED?
PLEASE EMAIL ROXANA@GONORTHSHORE.ORG**

MAHALO TO OUR AMAZING COMMUNITY!



Aloha Nui Kākou,

Here is our mana‘o for the week. As always, comments and interpretations are always welcome!

E nāna ana i ka ‘ōpua o ka ‘āina

Observing the horizon clouds of the land

- Seeking to discover future events by observing the cloud omens
(Pukui, Pg. 43, proverb 356)

Kilo played a huge role in the success and well-being of our kūpuna. Observing every possible person, place, thing, and element to ensure the safety of not only the people they live with, but also the crops they grow and the animals they care for/hunt. A Konohiki (steward of a portion of ‘ahupua‘a) must understand exactly what is to come next if he/she can carry out their kuleana of feeding their people. An Ali‘i relies on these individuals to keep balance around the mokupuni that they rule over, thus allowing them to know what needs to be done in every ‘uka, kula, and kai that they control. Depending on the way an ali‘i respects and depends on the extra eyes they carry will either increase their own knowledge of kilo, or make them lazy in only seeing through others and not through their own.

Clouds make for good company on any type of day when it comes to trying your knowledge in kilo. From the cotton candy colors during sunrise and sunset, to the heavy beating of billowing greys holding ‘āina’s next drink, we get a glimpse into the future. Look at them long enough, and we might be able to see into next week. Everything we see will not completely dictate the following hours or days, however it gets us even closer to understanding the works of our kūpuna. This summer brings us different weather patterns, and it is also in this time of uncertainty that we look to the ho‘ailona (significant symbols or observations) ‘āina provides to reap the benefits of hunting and gathering at the right time. If the week blesses you with a day to leave the work boots home and find something fun to do... Stay away from technology, step outside, and look up.

Ke Aloha,

Makua Perry

Email makualii@lokoea.org or visit www.lokoea.org



Aloha!

In the 40 years since I moved to the North Shore, I have seen gradual, and recently, sudden changes. Once we could count cars passing by after 10PM on one hand. We knew most everyone at the grocery store. And a home was something anyone who worked hard could buy. Those happy times have changed, but those in power have not.

- Our 100-year-old highway is crumbling and often floods.
- Unpermitted vacation rentals in our neighborhoods displace residents.
- Home prices are out of reach. Regulations strangle new housing.
- Many young adults must live with their parents or leave the islands.
- Crowds of visitors overwhelm residents, affecting our quality of life.
- Infrastructure is inadequate for residents and for our 2.7 million visitors.

We can do better.

I am retired and free to serve you full time. My years serving my church in Kahuku, our youth in soccer, curious residents and visitors as local historian, and my family as husband and father, have knitted me into our community. I've lived the challenges of small business, as a contractor and arborist for over 30 years.

I have actively supported and will continue to promote:

- Alternatives to ease our traffic woes.
- Solutions that address the root causes of homelessness, drug abuse and crime
- Easing the cost of living and housing shortage for residents
- Protection of our natural resources and native species.
- Diversified agriculture and protection of important agricultural lands (IAL).

I listen. I know the issues. I will work hard to represent you.

I humbly ask for your vote in the primary by mailing your ballot by August 5th or drop off by the 8th in Kahuku Community Center or Mililani Park and Ride.

"TOGETHER WE CAN DO BETTER!"

Mahalo! Boyd Ready



Boyd standing with his wife, Antya Miller, with Dr. and Mrs. Rodman Miller and son, Julian.

BOYD READY

STATE HOUSE (R)

Together We Can Do Better!

www.BoydReady.com
Paid for by Friends of Boyd Ready
P.O. Box 396, Kahuku, HI 96731

WE'RE ALL IN THIS TOGETHER

MAHALO

FROM THE NORTH SHORE FOOD BANK

Hawaii Food Bank, Aloha Harvest, HAM Produce and Seafood, Patria-Lili'uokalani Trust, Alea Bridge, Turning Point Chiropractic, North Shore Marketplace, Ted's Bakery, Surf n Sea, Malama Loko Ea, I Nui Ke Aho, New Hope-Haleiwa, North Shore Christian Fellowship, Bethany Strickland, Mike & Naty Hopewell, CM Heidi Tsuneyoshi & Staff, A Charitable Foundation, Carmel Tomlinson, Ms. Paula, Abby Parker, John O'Neill, Adrien Pesque, Mohala Farms, Paalaa Kai Bakery, Waialua Community Association, Haleiwa Jodo Mission, Joyce Hawkins-Alejandro, Nita Vance Ferreira, Van's-Robert Provost, Jodi Wilmott & Maika Young, Audrey Taddy, Thomas & Layla Holden, Barbara Ritchie, Big Wave Shrimp, Bill Quinlan, Sandra Cashman, Tom Jacobs & Noelle Bombordier, George Atkins, Neece Kuehu, Haleiwa Elementary, Camp Erdman-Andrew, Amanda Vendiola, Waialua District Park, Victoria Pescaia-WHS, Lindsey Stanley, Kim Lyons & Mali Catello.

Mahalo to those of you I missed and a special MAHALO to all the Volunteers!





Derek Ho & friend checking out Rocky Point, late 80's. Photo: Bill Romerhaus

Poke

FOR THE PEOPLE

NEW LOCATION
 Haleiwa Plantation Shops
 66-528A Kamehameha Hwy, Haleiwa
 Lots of parking in the back

NEW HOURS
 Mon-Thurs, 11am-3pm & Fri-Sun 11am-5pm
 Take out orders welcome! 888-0788

\$.50 off 1 choice poke bowl
(up to 5 bowls)

\$1.00 off 2 choice poke bowl
(up to 5 bowls)

10% off catering orders

Expires August 31, 2020.

One coupon per purchase.

12
Years of
experience



**HERO MOVING
& STORAGE**
A WHITE GLOVE MOVING EXPERIENCE

10K+
Customers
Moved

CALL US FOR A FREE QUOTE
808.650.3458
www.HeroMovingHI.com

We offer our customers:

- FREE ESTIMATES & COMPETITIVE PRICING
- A WHITE GLOVE MOVING EXPERIENCE
- CLEAN & COURTEOUS MOVING STAFF
- ON TIME PICK-UP & DELIVERY
- LOCAL, INTER-ISLAND & COMMERCIAL MOVING

WE ARE LICENSED & INSURED

1 MONTH
FREE
STORAGE

FREE
WARDROBE
BOX
RENTAL

\$50 OFF
LOCAL
MOVES

10% OFF
PACKAGING
SUPPLIES FOR
MILITARY &
VETERANS



★★★★★
CHECK OUT OUR
REVIEWS ON




BANZAI NORTH SHORE WIRELESS

THE ORIGINAL BANZAI BETTY, SOME SURFING HISTORY

There was a wahine who people named "Banzai Betty" in the 60's. Champion surfer Corky Carroll wrote about her as being "a hot surf chick in the 60's who was known up and down the coast of California". Elizabeth Carhart was well respected in the surfing world and could hang with the best of the men back then when not many "chicks" surfed. She was pretty famous, a model, artist and she worked for Disney as a mermaid. Earhart was from Laguna Beach and lived across from a famous family, the Calhouns. She made several appearances in Fender Guitar ads in Surfer Magazine and other publications and was an excellent skier as well spending time in Sun Valley as an ambassador according to Carroll. Banzai Betty now lives in Oregon and does some fantastic art projects!

DUKE KAHANAMOKU'S BIRTHDAY EVENT CANCELED

The Duke's OceanFest is a yearly celebration for surfing hero Duke Kahanamoku who brought surfing to the world. The event has been canceled due to the virus as many events have. The 8 day event brought people from all over the world to Waikiki with over two thousand athletes competing in many events including beach volleyball, surfboard water polo, paddling races and or course swimming and surfing competitions. Duke Kahanamoku was an Olympic athlete and won gold in swimming famously and medaled in water polo. He later was a movie star, Sheriff of Honolulu, an ambassador of Honolulu and

more! We will still celebrate his life with the aloha spirit. His birthday is August 24th. I'll keep you posted if there are any ceremonies to honor the legend!

EAT THEM OR DELETE THEM, URCHINS

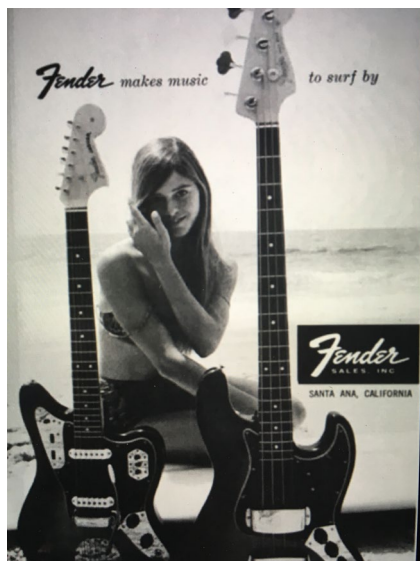
There seem to be a lot of urchins around on the reefs lately, it's the season for them to spawn. Not sure if that is the right word but they are everywhere. So besides making for a crazy delicious treat they can be the ruin of a good surf session or a dive on our reefs. If you step on one don't pee on it! Try some vinegar and later soak in hot as you can stand water with vinegar. That helps dissolve the spikes and loosen them up. You should then try and tweeze them out. Keep soaking hopefully the spikes come out. Again that peeing thing is bogus! The same with jelly fish!

The box jellies and portuegese man-o-war come in with the trades about ten days after a full moon. Watch out for them and wear protective coverings. Here is the projected times they are coming in. August 12, 13, 14- September 10, 11, 12- October 10, 11, 12- November 9, 10, 11- December 8, 9, 10. The purple man-o-war pretty much blow in and can have long tentacles so stay clear! Good luck!

THE WSL CANCELS 2020 TOUR

With the health and safety of athletes, fans, employees, and the local communities remaining the organization's top priorities, and considering the challenges of international travel currently, the WSL has officially canceled the 2020 CT and Qualifying Series (QS) seasons.

The 2021 tour will start in November 2020 in Maui, Hawaii for the women and in December 2020 in Oahu, Hawaii for the men, subject to the approval of the State of Hawaii and local government agencies, as well as effective protocols that allow for safe international travel. The 2021 CT season will finish with 'The WSL Finals,' a new single-day World Title Event in September 2021. For more info WorldSurfLeague.com



Banzai Betty

Sunset Beach Bike Path... On the Mend

By Rex Dubiel Shanahan

The Bike Path that runs parallel to the beach roads at Sunset Beach has a long history. About 30 years ago, a number of moms in the neighborhood petitioned for a bikeway to and from Sunset Beach Elementary. Their hard work prevailed and the City and County of Honolulu built the Bike Path. There was one stipulation...the City would do no landscaping. At that point, the North Shore Outdoor Circle stepped up and volunteered to work with community members to plant and maintain the Bike Path for five years. Well...13 years later, the NSOC had a celebration at Ehukai Beach Park with then Mayor Jeremy Harris and turned over the maintenance to the Dept. of Parks and Recreation. The Bike Path is a City and County Linear Park.

The NSOC has continuously worked in collaboration with the City to keep the Bike Path safe and beautiful. Over the last few years, though, the path has fallen into disrepair. There are bumps from tree roots and cracks from sun damage and aging that are making the Bike Path dangerous. The chickens are continually scratching green debris onto the path and making a mess. At one point, the Bike Path was maintained by independent contractors, but about 10 years ago, the City took over the job. With staff in short supply, the Bike Path has been neglected and now it's in very bad shape.

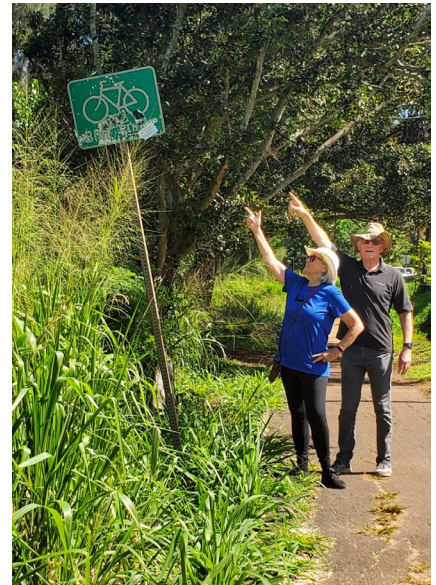
On the morning of March 20, Lea Albert, Ed Shanahan, and I, met with Tyler Sugihara. Mr. Sugihara is the Head of Roads Maintenance for the City. We walked the entire length of the Bike Path, 3 ½ miles, from Shark's Cove to Oopuola Street. Mr. Sugihara took copious notes and saw first hand the unsafe conditions of the Bike Path. He filed a long report sending it to a number of City department heads outlining the urgent need to repair the Bike Path and make it safe for residents and visitors.

The latest repairs are obvious. Root pruning and resurfacing of asphalt is happening. The cracks and big bump at Rocky Point were remedied. Because of Mr. Sugihara's input and persistence, we will be seeing more repairs in the near future. He asked me to report any damage or bumps which pose a hazard.

So...I am asking you, neighbors who use the Bike Path, please inform me if you have any concerns regarding the safety of the Bike Path. If you notice holes, bumps, broken curbs, cracks, etc., please take a photo with an address and a brief description of the damage and email me at [dubieldesig@hotmail.com](mailto:dubieldesig@hotmai.com). I will forward your concerns to him.



Tyler Sugihara, Head of Roads Maintenance for the City (a true advocate for our community and the Bike Path).



Lea Albert and Ed Shanahan, Executive Board Members of the North Shore Outdoor Circle.

AUWE! In recent weeks the Waialua Community Association has been vandalized. Required posters for reopening under Covid-19 guidelines have been ripped off our foyer walls and plastic holders broken. Plants around the facility have been ripped out or broken including our beautiful ti plants. Anyone caught in such vandalism will be issued a no trespass citation and subject to criminal prosecution. Anyone with any information, please contact the Waialua Community Association at (808)637-4606 or email at wca96712@hawaii.rr.com.



Renowned Lifeguard and Author from Oahu Releases New War Fiction

NEW YORK, NY – Hawaii resident Jason Bitzer has burst onto the literary scene recently with his highly anticipated thriller, *Iso: In the Wake of Technology*, telling the fictional story of a modern-day militarist coup of Hawaii and the strength on their people to overcome this unwelcomed force.

A well-planned attack on the U.S. leaves the Hawaiian Islands isolated. After enduring a high casualty first wave attack by a Chinese regime, the island regroups and is thrust into a power struggle between the various factions remaining. Power is non-existent and resources scarce. Using a civilian designed closed-loop technology named the “Kapu system,” a Hawaiian philanthropist, Ha’a Klien, will attempt to use his family estate’s resources to put the islands back together.

A race for control of this new sustainable Hawaiian society is on. Inches from Martial law and a repeat of Hawaiian history, locals band together in resistance against a leftover military group that no longer answers to the U.S. Government. Every facet of the Hawaiian population will need to learn to work together to avoid a military coup.

Strongly written and thoroughly captivating until the plot’s shocking conclusion, *Iso: In the Wake of Technology* is presented in a manner the invites readers from all backgrounds, and especially those from the beautiful state of Hawaii itself, are sure to enjoy.

ISO: In the Wake of Technology, published by Austin Macauley, was released on June 30th, 2020. Price: \$11.95, ISBN: 9781645363460. It is available on Amazon, Barnes & Noble, and in other bookstores throughout the country. Review copies are available upon request. For more information, please visit: www.austinmacauley.com/us.

About Author: Jason Bitzer has been a Lifeguard on the beach since 1999, working the last 10 years on Oahu’s dangerous North Shore where he was awarded the Mayoral award for lifesaving merit in aiding in the Rescue of Professional surfer Evan Geiselman, at the world-famous Pipeline. He cut his teeth writing as a contributor to *Vice sports* as well as writing feature scripts, such as ‘*In Deep*’ which made finals of various screenplay competitions such as the “California Film awards.” Looking to challenge himself in long form storytelling he wrote his first novel of his *ISO* series *In the Wake of Technology*. The story encapsulates Hawaii’s role in global affairs while showing what it would be like if the islands were cut off from the world during a major military conflict.



Hawaiian Electric Offers Payment Plans to Help Customers

Collection efforts to resume after Sept. 1 -To assist residents and businesses dealing with the financial toll of the coronavirus pandemic, Hawaiian Electric is offering special payment plan options to customers, including extending payments over time. Hawaiian Electric suspended disconnections and collections activities since March. In accordance with PUC direction, Hawaiian Electric extended its moratorium on disconnections for nonpayment through Sept. 1, and late fees resume after Sept. 15. By contacting Hawaiian Electric now and signing up for a payment plan, customers can avoid the inconvenience of an electric service interruption. “We know that many of our customers continue to experience financial strain, and our special payment plans are set up to provide customers with extended payment options with no penalty or financing fees during this unprecedented time,” said Shelee Kimura, Hawaiian Electric senior vice president of customer service. “For us to help, we need to hear from you.”

Customers who have been notified their accounts are past due are urged to contact the company well before Sept. 1 to set up a payment plan.

Customers may visit www.hawaiianelectric.com/paymentarrangement to view current plan offerings and to fill out a payment arrangement request form that can be submitted via email –the quickest way to start the process.

Haleiwa Evangelical Mission International
 Come and join us
 Sunday's at Waialua
 Elementary School Cafeteria
 Sunday School at 9:00 am
 Worship Services at 10:00 am
 For Prayer
 Call 637-4567
 Blessed to be A Blessing



"Children's Church"



Mahalo Eddie with the Department of Parks & Recreations for servicing Kaiaka Bay Beach Park!



Kids Hurt Too Hawaii
 Healing Young Hearts

**KIDS HURT TOO HAWAII
 2020 CAMPAIGN!**

Every donation helps to provide free services to grieving and traumatized children.

All donors receive a **Thank You Letter** for tax purposes. All funds go directly to the programs in Hawaii.

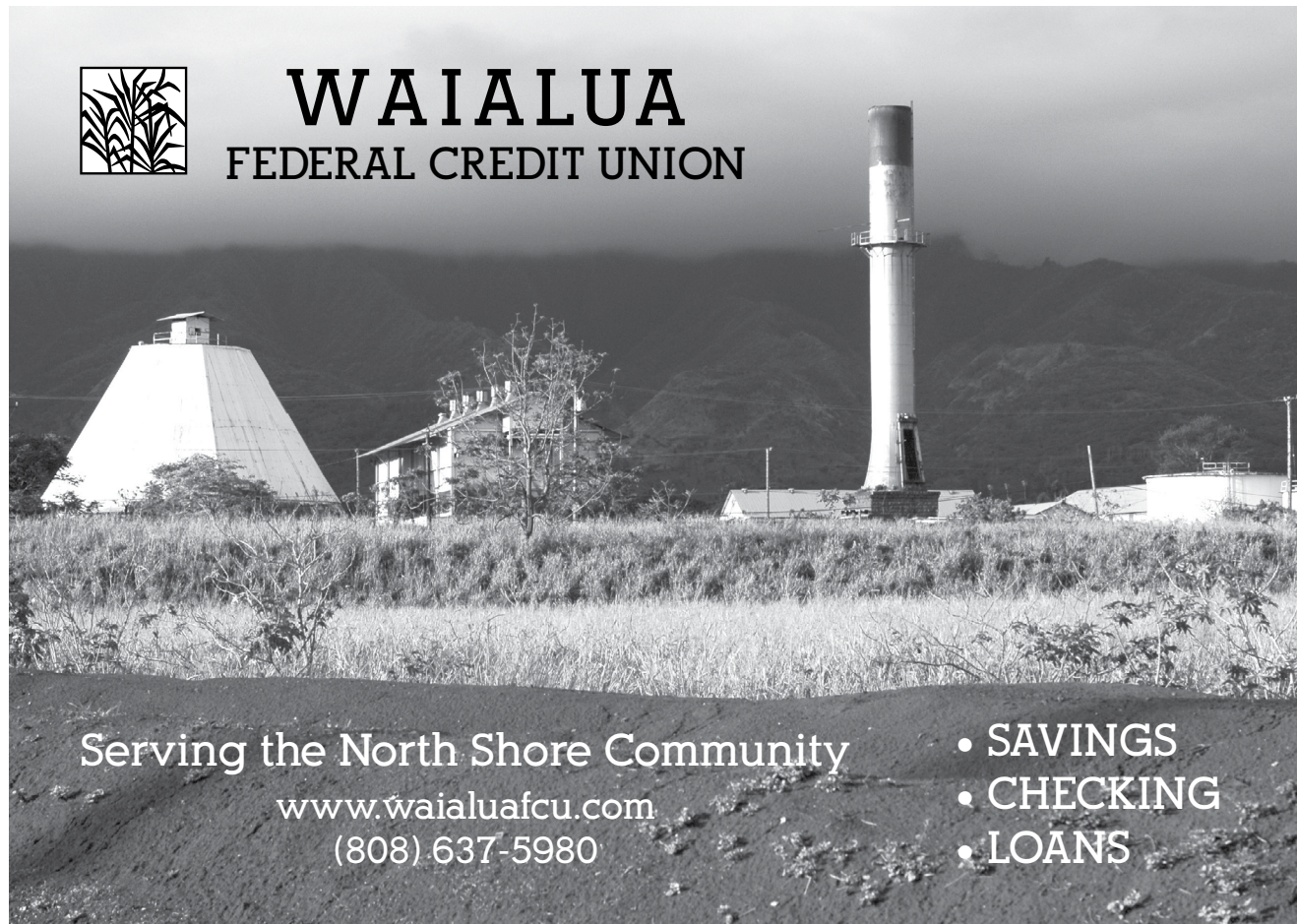
20th Year Fundraising Goal: \$500,000

Please email our
Executive Director, Tania Wildbill,
executivedirector@kidshurttoo.org,
 for PayPal donation link

245 N. KUKUI STREET, SUITE 203,
 HONOLULU, HI 96817
 PHONE: (808) 545-5683



**WAIALUA
 FEDERAL CREDIT UNION**



Serving the North Shore Community

www.waialuafcu.com
 (808) 637-5980

- SAVINGS
- CHECKING
- LOANS

BULLETIN BOARD

CELESTIAL
Natural Foods



Featuring the largest selection of certified organic produce on the North Shore.
No panic...ours is organic.
Open 7 days.
Mon.-Sat. 9am-7pm.
Sun. 9am-5pm

66-445 Kam. Hwy
Haleiwa, Hawaii 96712
Next to the Post Office
808-637-6729 • 808-637-1922 fax

LTC

Laie Trucking Company, LTD

* Ready Mix Concrete * Recycled Aggregates
* Pump Service * Hauling * Equipment Rental

PH: (808) 293-8710 PH: (808) 293-1296
P.O Box 121 FAX: (808) 293-2890
Hau'ula, HI 96717 laietrucking@hawaiiantel.net

"A LOCAL COMPANY, BUILDING A LOCAL COMMUNITY"

N-C PLUMBING & SUPPLY

Cont. Lic. No. C-8913



- RESIDENTIAL & COMMERCIAL SALES & SERVICE
- CONTRACTING & DESIGN • HOME PLUMBING SERVICE
- PLUMBING FIXTURES, HEATERS • FREE ESTIMATES

Nestor P. Calilao (Owner)	Bus:	637-8662
P.O. Box 769	Res:	638-5157
Waialua, HI 96791	Cellular:	372-8718

Saccoccio & Lopez

ATTORNEYS AT LAW

TRIAL LAWYERS

Serving Hawaii since 1984

637-7611

Personal Injury -Property damage
Criminal Law - Traffic Crimes
Landlord Tenant - Bankruptcy



COWPER CONSTRUCTION

GENERAL ENGINEERING CONTRACTOR

Full Service Sitework
Contractor
Septic Systems & Tanks
Since 1978
Michael Cowper 638-7200
cowperhawaii.com

LIC. #AC 18275



HALEIWA, HAWAII

Celebrating 40+ years of Professional Photo Services and Historic Images to the Community.
search: northshorephotohawaii.com

Munden Design & Build

Lic.#BC19632

Design • Plans • Permits • Construction
Additions & New Residences
808 391-8616

Providing quality work since 1978

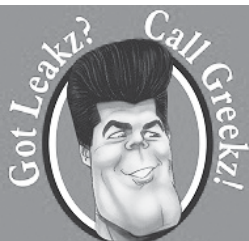
PARADISE

"IF YOU BUILD IT, WE WILL PLUMB"

PLUMBING

New Construction, Repair, Remodels

Dale Christensen C-29856 (808) 368-1473



Got Leakz? Call Greekzi!
372-1820
Greekz Plumbing

Greekz Plumbing

License# C-32939
Phone **372-1820**



KATHI LEE ALBIAR
OWNER/BROKER - RB 17327

808-358-4139
KATHI@ALBIARREALTY.COM
WWW.ALBIARREALTY.COM

SALES & PROPERTY MANAGEMENT SINCE 1993

GARDEN/CONSERVATION SUPPORT

AT WAIMEA VALLEY

Work with Waimea Valley's experienced botanical staff to create a special tribute in honor or memory of someone special. All funds go directly toward preserving this special *ahupua'a* for all.

To get started or to learn more, please call (808) 638-5851 or email rpezzulo@waimeavalley.net.



CONSERVATION TREE \$30

Every tree planted in the native forests above Waimea Valley strengthens these precious conservation lands and enhances the watershed. Our staff will accompany you on your tree planting, or we may plant on your behalf. Free single-day individual admission is included with each tree purchased. An annual family pass is included with purchases of 10 trees or more. Multiple trees may be eligible for discounted pricing; please inquire.



DEDICATION BENCH \$10,000

Your bench will be custom made by our staff from wood harvested in the Valley. We'll work with you to design a bench plaque, and determine the bench's location here in the Valley among our world-class botanical gardens. Includes a dedication/memorial service, 4 lifetime passes for your *'ohana* to visit the bench, and lifetime bench maintenance.



DEDICATION GARDEN \$10,000

Gardens are a beautiful, living way to honor a special individual or group. Any individual, family, or company may select and dedicate an existing garden at Waimea Valley. Your garden will be named and marked with a custom plaque, developed in consultation with our botanical staff. Includes a dedication/memorial service, 4 lifetime passes for your *'ohana* to visit the garden, and lifetime garden maintenance.



NORTH SHORE, O'AHU

CALL: (808) 638-7766

@WAIMEAVALLEY  

@WAIMEAVALLEYOAHU 

WHERE HAWAI'I COMES ALIVE

WAIMEAVALLEY.NET

MĀLAMA PŪPŪKEA-WAIMEA

PROTECTING OUR OCEAN RESOURCES

Working to replenish and sustain the natural and cultural resources of the Pūpūkea and Waimea ahupua‘a for present and future generations through active community stewardship, education, and partnerships.



Mahalo to our North Shore Community for helping to protect our fragile marine environment. It has been a beautiful, abundant time of renewal in the Pūpūkea Marine Life Conservation District and we hope you are all finding time to enjoy this unique, special place. From Hawaiian Spinner Dolphins & Monk Seals to Banded Urchins & Manini Fish, hundreds of species make this pu'uhonua (protected area) home. Ua ku'i kākou i ke kai - We are all connected by the sea.

In a NO TAKE ZONE It is ILLEGAL to:

- Fish for, take, harass, or injure ANY marine life (including eggs)
- Possess in the water ANY device that may be used for the taking of marine life
- Alter any geological specimen

Pūpūkea Marine Life Conservation District

NO TAKE ZONE
No Fishing, No Nets, No Spears, No collect, No Touch, No Take, No Kill

Wānanapāoa Islets

Pole Fishing allowed from shoreline of Bay ONLY and only into Bay (not past points). 2 poles per person limit. See rules and regs for seasonal surround net exceptions.

Waimea Bay

Kalua o Maui (Three Tables)

Kapo'o (Sharks Cove)

Kulalua Point

To report a violation, call (808) 643-DLNR or download the DLNRTip App on your phone

To Report a Monk Seal sighting, or any Seal or Turtle in distress, call 1-888-256-9840

Visit us at www.pupukeawaimea.org, on IG @malama_pupukea_waimea and on FB at Mālama Pūpūkea-Waimea





CLASSIFIEDS

The North Shore News is published every other Wednesday and mailed free of charge to all North Shore homes and businesses.

PRESS RELEASE POLICY: Submit press releases, mail or email to Editor, North Shore News, P.O. Box 117, Haleiwa, HI 96712. Please type your releases and keep them shorter than 200 words unless they are of an unusual news interest. Releases should be viable news stories and are published on a **space available basis only**, with priority given to those received in our office first. You may attach photos. We are not responsible for the return of any photos. All materials are submitted at owner's risk. We reserve the right to edit and/or refuse all submissions including advertising.

EDITORIAL POLICY: We welcome articles and letters from our readers. Letters to the Editor are published on a space available basis only and preference is given to shortness of length, and quality of content. We prefer to run not more than one letter, per person, per 6 month period. Letters subject to edit.

Views expressed by our contributing writers and advertisers do not necessarily reflect the view of the management and staff of the North Shore News. All rights reserved. Reproduction in whole or part without permission is prohibited. © 2020.

Editor & Classifieds

Linda Seyler

Typography

Downtown General Store

Contributing Writers

Tom Jacobs

Betty Depolito

State Representative Lauren Matsumoto

Senator Gil Riviere

Councilmember Heidi Tsuneyoshi

Photography

Banzai Productions

Facebook: NSNewsHaleiwa



Please recycle this newspaper.

SERVICES

SHORE ELECTRICAL SERVICE

New Const-Remodels
638-0049/Lic#C20777

Computer Problems?

I can fix any MAC or PC.
Chris 371-3089

Andres Plumbing

All your plumbing needs
808-256-7337 Lic#C24500

DRAIN CLEAN SERVICES

256-7337 Lic24500

Bulky Item Pick-Up

Beginning July 2020
Bulky items will be
picked up by appointment
only. 768-3200

North Shore Food Bank
@ nsfoodbank

**North Shore
Pet Nanny**

Experienced Pet Sitting,
Walking, Drop In Visits
Call Kathryn
808-489-3645
Reasonable Rates

Aloha Window Cleaning

Gutter Clean Outs
Pressure Cleanings
Window Cleanings
Call us today at
808-638-1630

**ANGELS
PLUMBING**

Repairs
Remodeling
Renovation
638-7878
Lic. #C12004



**DOG/CAT NAIL
TRIMMING**

At your home- only \$20.
Call 808-388-5336

Paumalu Electric Inc.

C 18074

Residential & Commercial
New Installation & Repairs
Renovations. Remodels
Electric Meter Replacements

Dave Hancock 638-9054

**ESTRADA'S
WE HAUL 'EM**

Garbage-Rubbish-Trash
Call Rick 808-216-9419

ALOHA COMPUTER

PC/MAC Repair/Virus
Removal
MOBILE COMPUTER
REPAIR SERVICE
372-2667

**CS EuroCars Kapolei
Mercedes Repair Shop**

with low labor rates
ASE Certified Technician
27 years experience
2116 Lauwiliwili St. Unit 104F
Kapolei, HI 96707 - Under New mgmt.
808-682-1957

BUSINESS SERVICES CENTER

Fast & Convenient Copy, Fax, Scan,
Computer/Internet, Laminate, & More



Across from
the Haleiwa
Post Office

637-4558 • gonorthshore.org
#gonorthshore

GERMAN CAR SERVICE

Professional-Qualified
Technician
Call Gary
637-6800

**HOT YOGA
NORTH SHORE**

We re-open June 19!!

New website, please sign-up!
www.hotyoganorthshore.com

HARVEY'S TOWING LLC

24 hr Towing Service
Lockouts, Jumpstarts &
Recovery. Specializing in
opening locked car doors.
Call anytime 478-0333

**Don't Want To Go
To The Gym?**

Private Fitness Training & Yoga
I Come to You!
808-282-8995
In person, video and phone options
evolvemobilefitness.com
mabelle.lee@gmail.com

Hawaii Tree Co.

Trimming & Removal
Professional-Reliable
Free Estimates
462-2749

**Waiialua Farmer's
Co-Op Market**

Historic Waiialua Sugar Mill
Saturdays, 8:30am - 1pm
Masks Required

Would you like to get the
North Shore News via
email in COLOR! Just send
us a message at:
NSNHaleiwa@gmail.com
and you get the NSN
online every two weeks!

Radiant Skin Care & Waxing

Aynjul Benigno
Licensed Esthetician
Call/Text 808-222-8124
radiantskincareandwaxing.com
Ka'ala Healing Arts #200B

HOW TO CONTACT THE NORTH SHORE NEWS

Letters to the Editor, and other items submitted for publication consideration
may be sent to us via:

MAIL: P.O. Box 117, Hale'iwa, HI 96712

E-MAIL: NSNHaleiwa@gmail.com

NSN4Linda@gmail.com

PHONE: (808) 780-8037

www.northshorenews.com

CLASSIFIED ADS

Next Issue - Aug. 12, 2020
Deadline Date - July 31, 2020

Hawai'i Statewide Marine Animal Stranding, Entanglement, and Reporting Hotline
Includes stranded/injured sea turtles, monk seals, dolphins, and whales. Phone: (888) 256-9840

OFF da ISLAND
 Are you leaving Oahu on vacation or business? Do you live on a neighbor island, the mainland or foreign country and subscribe to the North Shore News? Send us a photo of someone in front of a sign or landmark holding a copy of the NSN. Email your photo along with the person or persons' name, community of residence, contact info and photo location to: NSNHaleiwa@gmail.com.

Classified Ad Rates
 3 lines (min.) \$18.89
 4 lines \$25.13
 5 lines \$32.45
 1" Box Ad \$41.88
 (27 characters in each line)
 Include your contact information.
**Ads can be text, or emailed.*
 Pay by check payable to: North Shore News or credit card by phone order.
 We reserve the right to refuse any advertisement with a full refund.
 North Shore News • P.O. Box 117, Haleiwa, HI 96712
 (808) 780-8037 • NSNHaleiwa@gmail.com

FREE ADS
 Garage & Yard Sales, Reunions, Lost & Found.
 Email ad to: NSNHaleiwa@gmail.com



Marianne Abrigo, Properties
 Specializing in - North Shore Real Estate
 Ask for our list of available properties and/or a free market analysis.
Marianne M. Abrigo
 "Realtor since 1974"
 Office 637-3511
 Fax 637-0777
 Email mabrigo222@aol.com

HELP WANTED

Professional Pet Groomer
 Poodles A Must
 Part-Time in Pupukeya
 Competitive compensation based on experience, references required.
 Call Moani 638-7073

WANTED; Driver
 Ka'oa'o 366-6926
 'Olelo Hawaii a plus

Household Help Wanted
 Beachfront estate
 8 hrs per week
 808-637-0808

Job Foreman/Assistant Landscape Manager
 Full-Time - 40 hrs per week
 Benefits Included
 Previous supervisory experience beneficial
 Own transportation required
 \$19-\$20/hr, based on experience
 Call (808) 838-1202

NorthShoreChamberofCommerce is looking for volunteers to help with our Visitor Center sales and services. 3 hour shifts, Monday through Friday are available. Come be part of our team, helping the North Shore be a better place to live, work, and play!

Landscape Maintenance
 Full-Time - 40 hrs per week
 \$16-\$18/hr
 Benefits Included
 Own transportation required
 3+ years experienced req.
 Call (808) 838-1202

Retail Sales Surf & Sea
 Hawaii's Ocean Sports Headquarters is always looking for hard working, energetic people to become a part of our sales team. Good pay, bonus, benefits. Japanese speaking a plus. Ocean sports experience and dive instructor wanted. Please contact surfnsea@surfnsea.com for details.
 Apply in person daily 9am-7pm
 62-595 Kam. Hwy., Haleiwa

VOTE
Mail your ballot by August 5th!

FOR SALE

LANDSCAPING PLANTS FOR SALE
(808) 638-7740

FOR RENT
 Retail space available at 66-239 Kam. Hwy.
 \$3500/month
 Please call us at 808-838-1202

Commercial space for rent at Waiialua Shopping Center. 1050/mo plus tax. 10ft x 30ft deep. Great location in the middle of the main center building. Includes water and restroom in unit. 6mos lease available.
 Please call 808-341-0585 for more info.

TABLES & CHAIRS
 Call North Shore News 780-8037
 All proceeds go to the North Shore Food Bank

MISCELLANEOUS

Department of Motor Vehicles
 All road tests will resume on an appointment only basis at driver licensing centers. Both applicants and examiner are required to wear masks. For information on appointments and new procedures for the road test visit: www.honolulu.gov/csd

Microchip Madness for Oahu Pets
 August is Microchip Madness month, which means veterinarians island-wide, in partnership with the Hawaiian Humane Society, are offering low-cost microchipping of pets for just \$10. For information on participating veterinary clinics visit: HawaiianHumane.org

FREE Wooden Pallets Good Condition
 See Bernie at the Waiialua Community Association
 office 9am-2pm
 637-4606

KQNS 107.3 FM CHRISTIAN RADIO
 Inspirational, Health Music, Addictions, Marriage, Prophecy, Stories, etc.

SHAPE YOUR FUTURE
 Complete the 2020 Census
 2020Census.gov

OAHU SPCA
 Wahiawa Clinic Hours
 Thursday- Saturday
 8:30 a.m. to 4:30 p.m.
 (808) 754-1519

NEED HEALTH INSURANCE?
 You may be eligible for MED-QUEST (State Medicaid) or the Federal Marketplace (www.healthcare.gov)
 For Federal Marketplace, you may enroll now if you:
 -Lost job and employer-covered health insurance
 -Experienced a change in household income
 -Moved from another state or country
 -Recently released from prison
 Call Us!
 Legal Aid Society-536-4302 #2
 Oceania: 754-7303
 Med-Quest: 692-8151

Area Food Banks

- Surfing the Nations
 64 Ohai St, Wahiawa
 Last Saturday
- St John Apostle
 95-370 Kuahelani Ave
 Mililani
 Last Tuesday, 9a-12p
- Hawaiian Humane Society
 Pet Food
 M-F 11a-7p
- Private Sector (Purple Van)
 North Shore Only
 Call for Monday Delivery
 638-9627
- Hui O Hauula
 Hauula Community Asso
 August 3

LAST CALL To Donate!
 Operation: Backpack.
 This year we will distribute needed school supplies only. NO backpacks. Please call 780-8037 to make a donation or send check to: NSN, PO Box 117, Haleiwa

Waste Less, Feed More.



Instead of letting food go to waste, we can help feed Hawaii's hungry.

Aloha Harvest is a non-profit organization that rescues quality donated food from local establishments that otherwise would go to waste and delivers it free of charge to social service agencies who are helping to feed Hawaii's hungry.

Donate today, visit ALOHAHARVEST.ORG or call (808) 537-6945.

