



# "E Ala Na Moku Kai Liloloa"

In This Issue:

**North Shore Chamber of Commerce  
Updates and Activities**  
Page 10

**For The Love of Limu**  
Page 12

**Malama Loko Ea  
'Ohana Work Days**  
Page 21



NORTH SHORE NEWS July 1, 2020 VOLUME 37, NUMBER 10



## Signs of Life on the North Shore Maya's Tapas & Wine Reopens to In-House Dining

*By Tom Jacobs*

The North Shore Marketplace retail shops and restaurants reopening...slowly. Tourists and locals are returning...slowly. And one of those restaurants seating indoors again is Maya's Tapas & Wine, the upscale bistro in Hale'iwa next to Serman's Realty.

North Shore News two years ago when he first opened his lunch and dinner boutique. It is the kind of upscale eatery that Hale'iwa sorely needs more of (like Haleiwa Joe's and the Beach House). The virus had reduced Maya's Tapas to take out, but Lamont is pleased to be able to return to in-house dining.

Lamont who learned cooking and catering in the United States Coast Guards on a cutter here in Honolulu, thanks the community for their support during these stressful days by providing an affordable boutique menu featuring his unique cuisine. He is also full of gratitude to his faithful staff, who have been putting in 12-hour shifts.

In-house dining and lanai dining lunch hours from noon - 4pm, cocktails 4pm-5pm, dinner 5pm-9pm, Monday through Saturday. Malama pono.

PRRT STD  
ECRWSS  
U.S. POSTAGE  
PAID  
HONOLULU, HI  
PERMIT NO. 1479

\*\*\*\*\*ECRWSS\*\*\*\*\*  
RESIDENTIAL CUSTOMER

# NORTH SHORE FOOD BANK

Partnering with North Shore News & Alea Bridge  
@nsfoodbank

Sponsors: Hawaii Food Bank, Aloha Harvest & Ham Produce & Seafood

## DISTRIBUTION UPDATE

Wednesday, July 1, 12 noon, Kaiaka Bay Beach Park

Wednesday, July 15, 12 noon, Kaiaka Bay Beach Park  
with New Hope Hale'iwa

Wednesday, July 29, 12 noon, Kaiaka Bay Beach Park  
with North Shore Christian Fellowship & Malama Loko Ea

For more information and donations contact : Linda (808) 780-8037



# Poke

FOR THE PEOPLE

### NEW LOCATION

Haleiwa Plantation Shops  
66-528A Kamehameha Hwy, Haleiwa  
Lots of parking in the back

### NEW HOURS

Mon-Thurs, 11am-3pm & Fri-Sun 11am-5pm  
Take out orders welcome! 888-0788

\$.50 off 1 choice poke bowl  
(up to 5 bowls)

\$1.00 off 2 choice poke bowl  
(up to 5 bowls)

10% off catering orders

Expires July 30, 2020.

One coupon per purchase.

## The Hale'iwa Family Dental Center, Ltd.



- Adults and children
- Most cases completed in 4-12 months
- Clear braces available
- Lower cost
- University tested
- Used for over 20 years

Produced by Todd R. Okazaki and Staff

"Straighten those crooked teeth that have  
bothered you for years"

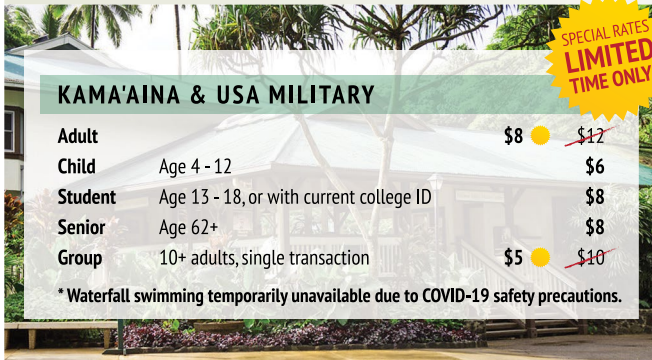
Conveniently located behind First Hawaiian Bank in  
Historic Hale'iwa Town  
Call 637-9652 for your reservation



# E HO'I HOU MAI • PLEASE RETURN

We hope to see you here soon! Waimea Valley is now safely reopen, with physical distancing best practices in place to keep our guests and staff safe. And if you're unable to visit in person, please consider donating or gifting an annual pass, to support the Valley's ongoing operations and enable us to preserve this special place for generations to come. Mahalo!

**WE ARE OPEN**



**KAMA'AINA & USA MILITARY**

Adult		\$8	●	<del>\$12</del>
Child	Age 4 - 12			\$6
Student	Age 13 - 18, or with current college ID			\$8
Senior	Age 62+			\$8
Group	10+ adults, single transaction	\$5	●	<del>\$10</del>

\* Waterfall swimming temporarily unavailable due to COVID-19 safety precautions.

**SPECIAL RATES LIMITED TIME ONLY!**



## KAMA'AINA & MILITARY DISCOUNTS

We've lowered select rates to thank our local community for their support. With O'ahu tourism on pause, there's never been a better time to visit us here at the Valley.

## MAKE A TAX-DEDUCTIBLE DONATION

After an unprecedented 11-week closure, we need your support to keep our doors open and allow us to preserve this sacred ahupua'a for all. Donate today at [waimeavalley.net](http://waimeavalley.net).



**ANNUAL PASS** Local residents only

Individual		\$30	●	<del>\$50</del>
Family	2 adults + up to 6 children age 18 & under	\$60	●	<del>\$100</del>
Lifetime		\$600	●	<del>\$1,000</del>

**SPECIAL RATES LIMITED TIME ONLY!**



**OPEN KITCHEN OAHU**

LOCALLY SOURCED

Comfort & Wellness  
Options Available

HIGH QUALITY

**@OPENKITCHENOAHU**  
**OPENKITCHENOAHU.COM**

## DISCOUNTED ANNUAL PASSES

Give the gift of Waimea Valley admission! Individual and family passes are valid for 12 months from purchase date. To buy, visit the Ticket Booth or email [info@waimeavalley.net](mailto:info@waimeavalley.net).

## OPEN KITCHEN OAHU

A branch of Waimea Valley's Ke Nui Kitchen, Open Kitchen Oahu offers daily chef-prepared, family-style meals. Also now offering "Ono Meal" subscription plans!



HOURS: 9AM - 5PM DAILY

CALL: (808) 638-7766

@WAIMEAVALLEY  

@WAIMEAVALLEYOAHU 

WHERE HAWAI'I COMES ALIVE

WAIMEAVALLEY.NET



Turning Point Chiropractic would like to introduce Dr. Pacada to the Haleiwa clinic. She was born and raised in Mililani, Hawaii, pursued a degree in Kinesiology and exercise physiology from Kansas State University, which helped form an interest in anatomy and physiology. After a minor injury during a Brazilian jiu-jitsu practice, she received chiropractic care that relieved her symptoms and helped her return to her activities. She went on to work towards her Doctor of Chiropractic degree from Cleveland University KC to incorporate her passion for conservative care in treating musculoskeletal conditions and help her patients get back to their full health. Dr. Pacada is a yoga instructor and enthusiast who loves to promote full-body mobility and healing, facilitating her patients to get back to their active lifestyle.

Haleiwa Office: 808.637.2608  
 Mililani Office: 808.376.2913  
 Waipio Office: 808.726.8000  
 Ewa Beach Office: 808.517.4826

**WE NEED YOUR INPUT!**  
**Rehabilitation of Streets Unit 93**  
**(Kamehameha Highway Improvements in Hale'iwa)**  
**Hale'iwa, Waialua District, O'ahu, Hawai'i**

On behalf of the City and County of Honolulu (CCH), we invite you to visit our new project website for the Rehabilitation of Streets, Unit 93 (Kamehameha Highway Improvements in Haleiwa) Project.

The project proposes to improve shoulders, relocate existing utilities, and install planters and bollards. The improvements would occur within the Hale'iwa town corridor, along Kamehameha Highway between the 'Opae'ula Stream Bridge, also known as "Twin Bridges", and the Anahulu River Bridge, within the Hale'iwa Special District. Shoulder improvements will include permeable pavers (where space is available) to provide an improved pedestrian experience and to reduce storm-water runoff and existing ponding issues. The improvements also include installation of planters and bollards to provide a vertical, physical separation between the improved shoulders and roadway.

Beginning July 15, 2020, please visit the project website for an online presentation of the proposed types of planters and bollards for the project and participate in an online survey. The website address is:  
<http://www.honolulu.gov/completestreets/haleiwa>

The purpose of the online survey is to solicit public input regarding the proposed styles, materials, and colors that will be used for bollards and planters in the project. The online survey will be available until Friday, August 7, 2020.

Should you have any questions about the online survey, please contact Gordon Ring at (808) 842-1133.





**Councilmember**  
**Heidi**  
**Tsuneyoshi**  
**Serving You in District 2**

I share in the concerns of many Ko'olauloa residents regarding the proposed expansion of Climb Works and the serious effect it could have on the rural character of this beautiful area. I hope that prior to the project moving any further, the applicant and the Department of Planning and Permitting can conduct a public hearing to consider the impacts the expansion may have on the adjacent, rural communities.

The major community concerns are the degradation of infrastructure such as roads, environmental impacts, and the use of agricultural lands as a tourist attraction modeled similarly to nearby Kualoa Ranch. As the Councilmember of the district, I believe these action needs to be vetted as they will undoubtedly have detrimental effects to small, rural communities that are already dealing with the impacts of past large-scale projects.

I would like to further recommend that any decisions made on this very significant development be incorporated into discussions and actions that are pending for Bill 1 (2019) - the Ko'olauloa Sustainable Communities Plan (KSCP). This expansion should be included in discussions and planning related to Kamehameha Highway. Section 4.1 relating to Transportation Systems states that the only arterial highway in Ko'olauloa is Kamehameha Highway and it is the only roadway linking the northerly windward O'ahu coastline communities to the North Shore to the west and Ko'olau Poko to the southeast. As we know, the longstanding and very serious concern for the community is the condition of this roadway and the impacts of increased capacity to the already stressed and deteriorating roadway.

The KSCP also states that, "According to the O'ahu Regional Transportation Plan (ORTP) 2030 (OMPO, April 2006), there are no major improvement projects which would involve increasing the capacity of Kamehameha Highway." Included is the position of the community which reflects the high need for safety improvements to the narrow, winding Kamehameha Highway through Ko'olauloa. Improvements to increase highway capacity to accommodate more cars (such as adding additional travel lanes) are not desired, unless considered necessary for safety reasons. The plan also shares that there is a growing concern over the effects of coastal erosion on Kamehameha Highway, and also a strong desire for a secondary/emergency access route to facilitate movement into and out of the region when Kamehameha Highway is affected

by high surf, flooding or road closures resulting from major accidents.

The permit application submitted by Climb Works indicates a potential of 1,000 visitors per day which would add exponential usage to the already heavily used Kamehameha Highway. This needs to be addressed not only in terms of increased impacts to the already compromised roadway, but that the significant increase in ridership contradicts what was indicated in the KSCP. The community's desire is to focus on improvements for safety and secondary/emergency access, not for increased capacity.

For all these reasons, I reiterate my strong support of the affected communities' request for a public hearing and I would also request that no further action should be taken on the project until it is included in discussions of the KSCP due to the impacts to Kamehameha Highway and discrepancies of what is included in the plan.

Mahalo for your continued support and please do not hesitate to contact me at 768-5002 or [htsuneyoshi@honolulu.gov](mailto:htsuneyoshi@honolulu.gov).

**PKB**  
**Mahalo for your support!** "Da Best"

**Mahalo to all of our customers for social distancing, wearing masks, and for patiently waiting as production speedily catches up with Snow Puffy orders!**

**Please be sure to view our new PKB special on the next page!**

[www.pkbsweets.com](http://www.pkbsweets.com)

# GARDEN/CONSERVATION SUPPORT

## AT WAIMEA VALLEY

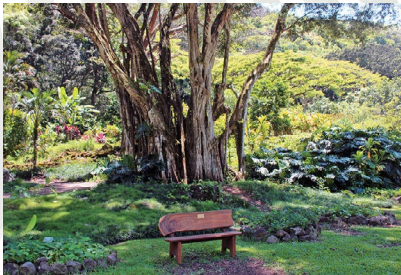
Work with Waimea Valley's experienced botanical staff to create a special tribute in honor or memory of someone special. All funds go directly toward preserving this special *ahupua'a* for all.

To get started or to learn more, please call (808) 638-5851 or email [rpezzulo@waimeavalley.net](mailto:rpezzulo@waimeavalley.net).



### CONSERVATION TREE **\$30**

Every tree planted in the native forests above Waimea Valley strengthens these precious conservation lands and enhances the watershed. Our staff will accompany you on your tree planting, or we may plant on your behalf. Free single-day individual admission is included with each tree purchased. An annual family pass is included with purchases of 10 trees or more. Multiple trees may be eligible for discounted pricing; please inquire.



### DEDICATION BENCH **\$10,000**

Your bench will be custom made by our staff from wood harvested in the Valley. We'll work with you to design a bench plaque, and determine the bench's location here in the Valley among our world-class botanical gardens. Includes a dedication/memorial service, 4 lifetime passes for your *'ohana* to visit the bench, and lifetime bench maintenance.



### DEDICATION GARDEN **\$10,000**

Gardens are a beautiful, living way to honor a special individual or group. Any individual, family, or company may select and dedicate an existing garden at Waimea Valley. Your garden will be named and marked with a custom plaque, developed in consultation with our botanical staff. Includes a dedication/memorial service, 4 lifetime passes for your *'ohana* to visit the garden, and lifetime garden maintenance.



**WAIMEA VALLEY**  
HI'IPAKA LLC

NORTH SHORE, O'AHU

CALL: (808) 638-7766

@WAIMEAVALLEY  

@WAIMEAVALLEYOAHU 

WHERE HAWAI'I COMES ALIVE

WAIMEAVALLEY.NET





**Senator  
Gil Riviere**

**Serving Oahu's North and  
Windward Shores**

**The Quarantine**

On Wednesday, June 24, 2020, Governor David Ige announced a pre-travel testing plan as an alternative to the 14-day quarantine for arriving transpacific passengers. Beginning August 1, individuals who are tested and found to be Covid-19 negative within 72 hours of arrival will not have to quarantine.

Continuous trial and error have improved, but not perfected, the quarantine process since its implementation on March 26th. When it was found that people were still renting cars, a policy was established to prevent renting cars to quarantined individuals. When it was recognized that people were freely coming and going from their rooms, hotels adapted by providing a single use room key. Now, anyone trying to get back into their room has to notify hotel staff and reveal themselves as having left quarantine.

A cat and mouse game continues with tourists who claim to be staying with family and friends, but sneak off to a vacation rental, all of which have been banned from operating on Oahu. The Governor's latest emergency proclamation also subjects vacation rental owners and homeowners to \$5000 fines when their guests violate quarantine.

Based on what has been learned over recent months, and due to the urgency of the pandemic response, two bills previously passed out of the House and now in the Senate will be completely changed. This process, known as gut and replace, is often controversial because it shortcuts normal vetting by both chambers. The bills will probably move quickly with limited debate and public input.

HB2502 will empower the director and the Department of Health (DOH) with specific powers in relation to detection, prevention, and control of communicable and dangerous diseases, and to amend current quarantine procedures to be more efficient and helpful. This bill is needed as a legal mechanism to empower DOH to screen incoming travelers.

A second new bill will help counties better regulate vacation rentals and the hosting platforms. HB460 will prohibit hosting platforms from completing a booking unless the vacation rental is listed on an approved county registry. It also gives the counties the ability to subpoena records from hosting platforms.

Probably the most significant and useful policy

to manage coronavirus spread is the new screening form and arrival process at the airport. All arriving passengers must complete the form and show identification after disembarking the plane. Their ID and place of lodging are confirmed and their cellular phone is verified by calling before they leave the concourse. The name, arrival and accommodation details, and phone number will be invaluable for contact tracing and stopping the spread.

The pre-test and quarantine process, effective contact tracing, improved testing capability, social distancing and hygiene protocols, better treatments and ample health facilities, all together, should give us confidence as we move forward with reopening.

My phone number is 586-7330. My email address is [SenRiviere@capitol.hawaii.gov](mailto:SenRiviere@capitol.hawaii.gov). Follow us on FaceBook or online at SenatorRiviere.com. Please visit us in Room 202 at the Capitol; or let's talk closer to home, maybe the next time we pass in the street. Mahalo.

**North Shore News**  
Next Issue  
Publication Date: July 29, 2020  
Deadline Date: July 17, 2020

**PKB SPECIAL**  *"Da Best"*

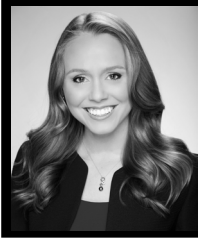
**MIX & MATCH TO SAVE!**

**ANY CHOCOLATE TREATS  
BUY 6, GET 15% OFF  
BUY 12, GET 20% OFF**

Choose from below and more in the bakery:

- Chocolate Dipped Doughnut
- Chocolate Covered Croissant
- Doughnut Twist w/Chocolate
- Glazed Doughnut w/Chocolate

This offer cannot be combined with other promotions, discounts, or daBest VIP card. Offer valid from 7/1/20 - 7/14/20.



**Representative  
Lauren  
Matsumoto  
Serving You in District 45**

Aloha friends and neighbors!

The Legislature started meeting again on Monday, June 22 to finish out all 60 days of the 2020 Legislative session. Although we're in the midst of finishing some hearings and considering others for conference committee, we will be working on measures to address the economy as well as other important issues like sunset dates. We're live-streaming all committee hearings and floor sessions on Olelo Community media since the Capitol is still closed to reduce the risk of spreading COVID-19. Please visit [capitol.hawaii.gov](http://capitol.hawaii.gov), [olelo.org](http://olelo.org), or email my office at [RepMatsumoto@capitol.hawaii.gov](mailto:RepMatsumoto@capitol.hawaii.gov) if you have any questions about bills or hearings during the rest of the 2020 session.

During the last few months I have been coordinating with members of the community to donate fabric masks for essential workers. The community was so generous that we have more masks to give out! Now that more businesses are opening back up, I would like to continue to provide free masks for those going back to work so we can keep the curve flat! Please email my office if your business needs masks at [repmatsumoto@capitol.hawaii.gov](mailto:repmatsumoto@capitol.hawaii.gov). We will do our best to fulfill all requests until supplies run out.

Although the COVID-19 pandemic is on the top of our minds, don't forget that this is also hurricane season. Each year from June to November it is important for all of us to have a plan set in place to keep ourselves and our families safe. While we do not know how many storms will affect Hawaii, we should be fully prepared in case one strikes!

To learn more about how to create a disaster preparedness plan, both the City and County of Honolulu and the Hawaii State websites have information that will prove helpful. The Honolulu Department of Emergency Management website at [www.honolulu.gov/dem](http://www.honolulu.gov/dem) and the State of Hawaii Department of Emergency Management website at [dod.hawaii.gov/hiema/](http://dod.hawaii.gov/hiema/) are both convenient resources to find sample preparation plans, review evacuation maps, and receive emergency notifications!

Once a hurricane warning is issued we have less than 36 hours to finish preparations or, if instructed by authorities, evacuate the area. A day and a half can go by quickly, so it is vital to have what you need and a plan set in place before the warning is issued. Start storing items such as food and water today!

To prepare your home, please consult the

"Homeowner's Handbook to Prepare for Natural Hazards" – a free publication that can be accessed on line at <http://seagrant.soest.hawaii.edu/homeowners-handbook-to-prepare-for-natural-hazards/> The Red Cross suggests having the following items:

- Water and non-perishable food for 14 days
- Flashlight
- Battery-powered or hand-crank radio
- Extra batteries
- First aid kit
- Medication (14 day supply)
- Multi-Purpose tool
- Personal hygiene items
- Extra clothing
- Copies of personal documents
- Cell phone with chargers
- Emergency contact information
- Extra cash
- Emergency blanket
- Maps of the area
- Tools/Supplies for securing your home
- Extra set of car and house keys
- Insect repellent and sunscreen

Make sure to have a plan for your pets as well! Find pet-friendly housing on your evacuation route. If you stay home, ensure your pets are indoors and unable to escape. Prepare an emergency kit for them including food and water bowls, vet records/contacts, food and water, litter/box/waste bags, medications, leashes, and collars.

Don't forget about fun things too! Books, board games, or a battery-powered laptop or DVD player will help you pass the time indoors. Go to [www.redcross.org/get-help](http://www.redcross.org/get-help) for helpful guides and other information to help you prepare for emergencies. Don't let a storm turn into a disaster. Be informed, plan, and prepare so that you and your family will be safe this hurricane season!

As always, please don't hesitate to contact my office with any questions or concerns about happenings in our community. You can reach me at (808) 586-9490 or at [repmatsumoto@capitol.hawaii.gov](mailto:repmatsumoto@capitol.hawaii.gov).



## APPLY IN PERSON

1116 Whitmore Ave, Wahiawa

Field & Factory Workers, CDL Driver, Security Guard

Hours: Mon-Fri 8:00 am – 12:00 pm &  
2:00 pm – 4:30 pm

Inquiries: (808) 621-3207

An Equal Opportunity/Affirmative Action Employer



# Breath and Stress Reduction

Helen Hudson, RN, MSW  
 Ko'olauloa Community Health Center

HA is a Hawaiian word for breath of life. It is a vital part of our lives.

It might be surprising for you to know that we often restrict our own breath when we are stressed or worried, or even to make our stomachs appear flatter. We might even hold our breath for a moment or two when we are surprised or shocked. Shallow breathing only uses the chest and shoulder muscles instead of the diaphragm. When we breathe this way, we reduce the amount of oxygen coming into our lungs.

When we get into the habit of shallow breathing, we keep ourselves in a cycle of stress. Stress causes shallow breathing, which creates more stress resulting in more shallow breathing. This cycle activates the fight or flight response to our nervous system which then makes stress a part of our bodies resulting in making us more emotionally reactive. A simple remedy is to start breathing deeply with your diaphragm. This type of breathing has a lot of physical benefits: it decreases stress, helps calm emotions, and

increases energy. Recent studies have even shown an improvement in concentration and memory. It can improve awareness, make us more present and keep us grounded. This easy coping tool is especially helpful in dealing with the stress caused by the corona virus.

Practice deep breathing by lying on your back with one hand on your stomach, and the other on your chest. Breathe deeply through the nose and push out your stomach. When you exhale you should feel your stomach pulling back in. The hand on your chest should remain still. Babies are excellent role models for deep breathing. They breathe with their entire diaphragm and you can see their bellies rising on inhalation and falling with exhalation.

HA is vital for your good health. Keep breathing deeply!

**Ko'olauloa Health Center**  
 293-9231

*We accept everyone regardless of ability to pay.  
 Improving the quality of life for all. Imua!*

## Haleiwa Arts Festival Cancelled for 2020

The Haleiwa Arts Festival and its Board of Directors have made the difficult decision to OFFICIALLY CANCEL the upcoming 23rd Annual Haleiwa Arts Festival on July 18 and 19, 2020.

We have such an amazing group of visual, performing and culinary artists waiting to showcase their talents as soon as these challenging times we are living in are aligned with large gatherings.

Until then, our efforts will be in fundraising to help sustain the Haleiwa Arts Festival in 2021.

We are disappointed, but the health and well-being of our artists, our patrons and our vendors is the utmost priority.

**COMMUNITY4ART**

**haleiwaartsfestival.org 808.637.2277**



**MĀLAMA**  
 LOKO EA FISHPOND

NATIVE HAWAIIAN STUDENT SERVICES IN PARTNERSHIP  
 WITH MĀLAMA LOKO EA FOUNDATION PRESENTS

# KEKAULIKE SUMMER INTERNSHIP

**PRIMARY KULEANA**

- Performing fishpond duties such as: daily pond observations, water quality testing, maintain makaha (fishpond gate) and native plant gardens.
- Learning and implementing daily Native Hawaiian protocol.
- Assisting in daily maintenance of fishpond and planting areas throughout the property.
- Remove invasive plants and fish species from Loko Ea and the surrounding area.
- Propagating native plant species for MLEF, to aid in the restoration process.
- Repair and build kuapā (rock wall)
- Assisting MLEF staff to prepare, host and conclude the monthly community workdays and cultural site maintenance days.

**QUALIFICATIONS**

- Interest in Hawaiian Studies, Hawaiian Language, environmental studies, and education or any other related field.
- Experience in using Office Suite (Word, Excel, and Power Point), Google Drive software programs, and web development software.
- Ability to do physical labor including carrying a minimum weight of 40lbs and working in outdoor environments.
- Valid Hawai'i Driver's license.
- Available to work on some weekends.

**PERTINENT INFORMATION**

- Flexible at-home work schedule (arranged with internship site)
- \$14.90 per hour with a maximum of 300 hours

**TO APPLY:** <https://forms.gle/dwo0AUgUudk5UPLx6>  
**DEADLINE: JULY 3, 2020**  
**INQUIRIES:** [hkeala@hawaii.edu](mailto:hkeala@hawaii.edu)  
**LEARN MORE ABOUT LOKO EA FISHPOND:** [lokoea.org](http://lokoea.org)



Native Hawaiian  
 LOKO EA FISHPOND



## North Shore Chamber of Commerce News

### Chamber Update and Activities

by Roxana A. Jimenez

The past few months have been the most active period ever for the North Shore Chamber of Commerce (NSCC). Prior to the pandemic, the NSCC Board was continuing to encourage completion of the Haleiwa sidewalk project, which is in active planning. The Board has also begun active discussions with our Councilmember Heidi Tsuneyoshi regarding the all-important issue of more parking for Haleiwa, and also continuing to pursue the Department of Transportation parking project at Laniakea (Turtle Beach).

The pandemic has created serious hardship for almost every North Shore business and their employees. Your Board has been active in encouraging the Governor and Mayor to reopen the North Shore economy. We undertook a major project of pulling together a set of safe health practice guidelines for our businesses that are practical and tailored to the North Shore situation. These guidelines were provided to the Governor's office a few days before the decision to open our economy was made. In fact, our Lieutenant Governor Dr. Josh Green wrote us back and praised them.

Believing that it may be some time before the tourist quarantine is lifted, NSCC has requested a grant for funds to advertise the North Shore to the Oahu community. In the meantime, the board's Marketing Committee has been working on marketing initiatives to promote North Shore businesses to our community at large.

We are thrilled to launch the Go North Shore Kama'aina Specials Page at [www.gonorthshore.org/kamaaina](http://www.gonorthshore.org/kamaaina). All North Shore businesses are invited to post a business-boosting special that they'd like to offer to all Hawaii residents. Simply email [roxana@gonorthshore.org](mailto:roxana@gonorthshore.org) with subject line "Kamaaina Special" and include what your business name is, the link to the special you're offering, how long you'd like to offer the special, and any applicable contact information you'd like published such as website address and phone number. We'll post it on the page to send some new businesses your way!

We would also like businesses to hashtag, #gonorthshore, wherever possible on social media posts, i.e. Facebook, Instagram, Twitter, etc. By generating more #gonorthshore hashtags, we are working together to promote the North Shore business community.

The North Shore Chamber of Commerce has succeeded in impacting our legislators in order to help our community. Our membership has done a wonderful job reaching out to the Chamber to voice their needs and concerns. There is still so much work to be done to help our community recover and continue operating. The Chamber of Commerce appreciates your simple gestures of support during this economic recovery period.

## Satellite City Halls Set Sights on Reopening

HONOLULU – Satellite city halls across O'ahu will start reopening July 1 for regular in-office service on an appointment-only basis.

Only Ala Moana Satellite City Hall will temporarily remain closed to in-office visits as it prepares to relocate within the shopping center.

For the other eight satellite city halls on O'ahu, precautions are in place to ensure the safety of customers and employees, who will be required to wear facial coverings and remain six-feet apart from others during all in-office transactions.

Appointments for in-office visits to satellite city halls will be available starting June 29. To make an online appointment, visit [www.alohaq.org](http://www.alohaq.org)

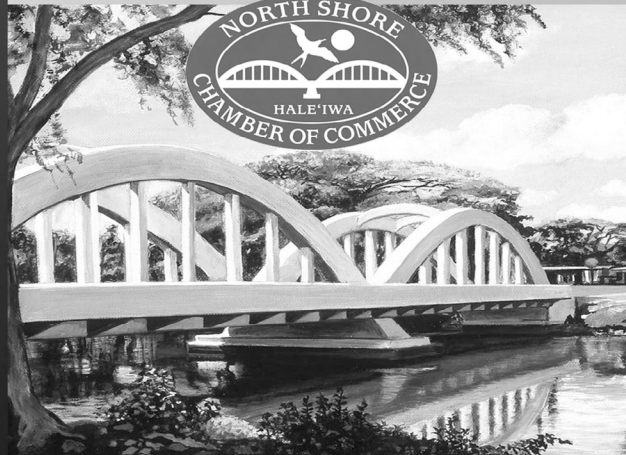
"In support of social distancing efforts, 'walk-in-and-wait' transactions are not offered," said Sheri Kajiwaru, director of the city's Department of Customer Services. "We also ask the public to continue to do express payment services, such as water bill payments and annual vehicle registration renewals, via online, mail-in or by 24/7 kiosk options."

This would free up appointment slots for transactions that can more efficiently be completed in-person, such as applying for a disability-parking permit, junking a vehicle or performing complicated motor vehicle transactions related to a lost title or difficult registrations.

The six driver licensing centers on O'ahu reopened May 26 for in-office visits also on an appointment-only basis.

For more information, visit [www.honolulu.gov/csd](http://www.honolulu.gov/csd)

Days are Better  
in the Country!  
**go@northshore**  
Visit Historic Haleiwa Town  
Charming Uncrowded Parks,  
Beaches & Unique Shopping!



BOYER © LynneBoyer.com

**The Beautiful North Shore is Back in Business  
& Waiting For You  
There is No Better Time For a  
Beautiful Sunset!**  
[www.gonorthshore.org](http://www.gonorthshore.org)





# BACK TO SCHOOL Operation Backpack 2020

Aloha! This year in light of COVID-19 our Operation: Backpack team has decided to distribute the needed school supplies only. NO backpacks this year.



## HOW CAN YOU HELP?

A monetary donation will sponsor school supplies needed for each grade (K-12).

Checks can be made and sent to:



North Shore News or Once A Month Church  
PO Box 117, Haleiwa, HI 96712



For more information or credit card donations please call Linda at (808) 780-8037

Donations can also be dropped off at the North Shore Chamber of Commerce office (Monday-Friday 10a-3p). Deadline is Monday, July 27.

**To Sign-Up for School Supplies:** send an email to [NSNHaleiwa@gmail.com](mailto:NSNHaleiwa@gmail.com) with keiki name, age, grade, school, t-shirt size and parent contact information.

Deadline to pre-register is Monday, July 20.

Mahalo from North Shore News, Once A Month Church & North Shore Food Bank

## For The Love Of Limu

By: MPW Staff

This Spring has been an especially abundant time for the Pupukea Marine Life Conservation District. A combination of weather changes and a dramatic decrease in human use has resulted in the perfect storm of opportunity for growth and renewal. The building block to any marine ecosystem is algae. Micro-algae like zooxanthellae (the algae that lives in coral and gives it energy to grow and reproduce) and macro-algae (limu or seaweed, that provides food for marine life and us as well) are critical to any healthy marine ecosystem.

“One of the most beautiful kilo (observations) we’ve made over the past couple months is a boom of algae growth in the tide pools. Thousands of feet usually scrub the algae off so it never has a chance to grow, but now every submerged area is covered in a fine carpet of limu,” says Jenny Yagodich, MPW’s Director of educational programs.

The recent break from humans and a naturally occurring growth season have resulted in an abundance of limu in areas researchers have not seen before. “We’ve been surveying and keeping track of the limu that grows here for many years. Most of the limu grows out on the reef flats...we never really see much in the tide pools. During our last kilo session, however, we documented 10 native limu varieties all within the tide pools” Yagodich said.

Herbivorous fish such as Manini (convict tang), Uhu (parrotfish), Kala (bluespine unicornfish), and Umauma Lei (orangespine unicornfish) help to keep the reef habitat healthy. In the tide pools, an increase in turf algae has led to an increase in juveniles of these species. “The whole point of a Marine Life Conservation District is spillover – the hope is that fish and other marine life will have a healthy, abundant area in which to grow and reproduce, then they will spill over into outlying areas. If their food source, limu, is not here, they won’t be able to be here either,” adds Yagodich.

Following pono practices such as not stepping on the reef or submerged rocks, not using sunscreens that contain damaging chemicals such as oxybenzone, avobenzone, and octinoxate, and not touching or altering the behavior of marine life all help to ensure that the progress the marine ecosystem has made recently will continue.

As a reminder, the Pupukea Marine Life Conservation District is a no-take area, but in other areas where take is allowed, here are some great things to know:

- Limu doesn’t have roots like land plants and trees. Instead, they have a “holdfast” used to anchor themselves onto the reef and rocks. When collecting limu, never pull the holdfast off, rather, pinch or cut the limu leaving an inch or two attached to the reef...it will grow back!



*Limu Kohu*



*Limu Wawae 'ole*

- Limu is good for you! It’s full of vitamins like vitamin C, minerals like iron, and fiber.
- Limu is responsible for over 75% of the world’s oxygen! Phytoplankton, a type of marine algae, carry out photosynthesis using carbon dioxide and water to generate food for themselves, while giving out oxygen as a waste product.
- Not only does seaweed help the natural cycle of the oceans but they also provide shelter and breeding grounds for the marine life that live with them. When you collect limu, be sure to remove all the critters so they can continue to grow.
- Limu is traditionally used in ceremony here in Hawai’i. Limu Kala (Sargassum spp.), for example, is used in conflict resolution ceremonies called Ho’oponopono (kala means “to forgive”).

For more information, visit [www.pupukeawaimea.org](http://www.pupukeawaimea.org) or check us out on IG @malama\_pupukea\_waimea.



# Hale'iwa Jodo Mission's Bon Dance and Toro Nagashi

As the days grow longer and summer quickly approaches, people from all over the island flock to the North Shore for activities suited for long and hot days. The stunning beaches, rich cultural history, and refreshing shave ice are just a few reasons to visit this part of Hawai'i. There are, of course, many other reasons to visit, like Hale'iwa Jodo Mission's bon dance and toro nagashi.

The Hale'iwa Jodo Mission is a Buddhist temple located just west of Ali'i Beach Park. Founded more than a century ago in May 1912, by Reverend Jitsujo Muroyama, the Mission moved to its current location in 1913, to the old Hale'iwa Seaside Hotel building and surrounding land. The temple is well-known in the community for its history as a Japanese school as well as for hosting events such as bon dances and craft fairs.

Many people are familiar with the bon dance tradition in Hawai'i, but not everyone knows its origins. Originating in Japan, Obon is a Buddhist custom to honor the spirits of one's ancestors. This tradition consists of families coming together to clean family graves and household altars, as the spirits of their ancestors are believed to come back to visit for a brief time. Celebrated in Japan for more than 600 years, the bon dance is a folk entertainment and genre of dance performed during this Obon period. The different flavors of the various regions of Japan can be experienced in the different styles of dances and songs throughout the island chain. Over time, the religious connotations of the bon dance have faded and, for many, it is now thought of more as a summer activity, like a carnival.

Bon dances are often performed with lines of people forming a circle around a high, wooden scaffold called a yagura. The musicians and singers often perform on the yagura, while the people dance around it. The modern-day Bon Dance is beloved by many because it is a fun experience for people of all ages. The Hale'iwa Bon Dance, which is usually held on a Friday and Saturday evening during the summer, has the traditional yagura and dancing, great food, and refreshing, delicious shave ice. It also has the ever-popular Fukushima Ondo accompanied by a live taiko group.

Alongside this tradition, on the second evening of the Hale'iwa Jodo Mission bon dance, there is usually a toro nagashi, or floating-lantern ceremony. Hundreds of people gather around to release over a thousand paper lanterns directly into the ocean and watch the spectacle. The sight of the lanterns slowly fading away into the dark is both graceful and mesmerizing. This Japanese custom became widescale after 1946, when people started setting lanterns afloat to honor the victims of the atomic bombings of Japan and other lives lost during WWII. By writing the names of ancestors or loved ones who have passed onto each

lantern, it is not only a way to honor them, but also a way to help guide their spirits on their journeys back to their permanent dwelling places in the Pure Land. A few years ago, the Hale'iwa Jodo Mission switched to multi-colored lanterns, which were more earth-friendly, which makes for a cleaner ocean as well as a more colorful light show.

Due to coronavirus concerns, many of the summer O-Bon events across Hawai'i have unfortunately been cancelled, including the Hale'iwa Jodo Mission Bon Dance and Toro Nagashi. However, the temple is still planning to observe some rituals during Obon such as Otoba (a ritual that involves praying for the deceased, whose names have been written on long wooden planks symbolizing stupas). Please look up the Hale'iwa Jodo Mission - Buddhist Temple on Facebook, for more information.



*Hale'iwa Jodo Mission Bon Dance*

**EVERYONE WELCOME**



**HALEIWA JODO MISSION**

**- BUDDHIST TEMPLE**


66-279A Haleiwa Road

(808) 637-4382

*July 2020*

Due to uncertainties of the public health situation,  
Public O-Bon Festivities have been cancelled.

**For info on July events,  
please call, e-mail or check Facebook.**

 **Search "KOJI EZAKI" on  
YouTube for his streamed services.**

Wishing everyone a  
happy and healthy July





Carissa Moore still training for the Olympics! Photo: banzaibetty.com





# BANZAI NORTH SHORE WIRELESS

## KAENA POINT BEING STUDIED FOR NATIONAL HERITAGE AREA

Hawaii U.S. Reps. Ed Case and Tulsi Gabbard want to make Kaena Point on Oahu’s westernmost shore a National Heritage Area. H.R. 6603 would study the potential for that official federal designation, which would be the first in the state. There are currently 55 National Heritage Areas nationwide and Case said the designation could bring a lot of federal dollars to help conserve the area. In a press release, Case said Kaena Point “is the perfect candidate” for a National Heritage Area and is “one of the last few remaining and easily accessible wilderness areas on Oahu.” Kaena Point is the last intact sand dune ecosystem in the state, and is an important Hawaiian cultural site. It’s also home to monk seals, laysan albatrosses and other protected species, but has suffered from erosion, roading and other harmful activities. Tulsa Gabbard said in a press release not long ago that the community must work together to study the potential for a historic National Heritage Area designation and protection we need and protection we need to malama this special place for generations to come.

through Tokyo, and hopefully Paris 2024, LA 2028 and beyond. It is our highest hope, all the values that surfing and the ISA bring to the Games and the movement continue to be recognized now and in the future”, the ISA said. This is positive news that surfing in the olympics is supported and hopefully it has longevity for the sport.



BLM Waimea Bay Photo: banzaibetty.com

## WE CAN DO BETTER, BLM WAIMEA BAY

The Black Lives Matter organization put together some protests on Oahu including one at Waimea Bay. The paddle out was a bit controversial but plenty folks showed up to support the movement. The paddle out was said to be an uplifting experience in support of black social issues, changing legislation regarding our police force around the nation and more issues. Waimea Bay was a beautiful perfect backdrop and over 1000 people paddled out in support of Black Lives Matter. In response the Hawaii legislators are working on a bill to see that Police misconduct cases are made available to the public in Hawaii. Progress is being made and more to come here and nationwide!



## ISA CONFIRMS OLYMPIC SUPPORT

The International Surfing Association, the organization that has been the leader for surfing in the Olympics, has confirmed that the IOC, International Olympics Committee, is officially giving their support for surfing in the Olympics. The ISA has made a statement regarding this. "While the IOC's support comes at a critical time in the COVID pandemic, we consider their contribution to be an investment in our collective future. "The ISA is fully committed to the success of Olympic surfing in the long-term,

**Haleiwa Evangelical Mission International**

Come and join us  
 Sunday's at Waialua  
 Elementary School Cafeteria

Sunday School at 9:00 am  
 Worship Services at 10:00 am

For Prayer  
 Call 637-4567

**Blessed to be A Blessing**

"Children's Church"

## Letters to the Editor

Dear Editor and All Concerned,

Wedge-tailed Shearwater birds at Kahuku Golf Course adjacent to the Japanese Graveyard are being killed by wild dogs from homeless camp.

I contacted the Honolulu Police Department and Kahuku Golf Course, no one is protecting them, please help. See pictures taken in June.

Anthony Pickard



Aloha Editor,

I just wanted to write a letter to the North Shore community to let them know it is a pleasure to be a kupuna living on the North Shore. Mahalo to the North Shore Food Bank volunteers who delivered food boxes to many kupuna and a special Mahalo to Mohala Farms for the delicious hot meals they cooked and delivered to us!

Sincerely, Kathy



Volunteer NSFB driver Betty Depolito

## Editor's Choice

### "Freedom is Not Free"

(Author Unknown)

Have you ever wondered what happened to the 56 men who signed the Declaration of Independence?

Five signers were captured by the British as traitors, and tortured before they died.

Twelve had their homes ransacked and burned. Two lost their sons serving in the Revolutionary Army; another had two sons captured.

Nine of the 56 fought and died from wounds or hardships of the Revolutionary War.

They signed and they pledged their lives, their fortunes, and their sacred honor.

What kind of men were they?

Twenty-four were lawyers and jurists. Eleven were merchants, nine were farmers and large plantation owners; men of means, well educated, but they signed the Declaration of Independence knowing full well that the penalty would be death if they were captured.

Carter Braxton of Virginia, a wealthy planter and trader, saw his ships swept from the seas by the British Navy. He sold his home and properties to pay his debts, and died in rags.

Thomas McKeam was so hounded by the British that he was forced to move his family almost constantly. He served in the Congress without pay, and his family was kept in hiding. His possessions were taken from him, and poverty was his reward.

Vandals or soldiers looted the properties of Dillery, Hall, Clymer, Walton, Gwinnett, Heyward, Rutledge, and Middleton.

At the battle of Yorktown, Thomas Nelson, Jr., noted that the British General Cornwallis had taken over the Nelson home for his headquarters. He quietly urged General George Washington to open fire. The home was destroyed, and Nelson died bankrupt.

Francis Lewis had his home and properties destroyed. The enemy jailed his wife, and she died within a few months.

John Hart was driven from his wife's bedside as she was dying. Their 13 children fled for their lives. His fields and his gristmill were laid to waste. For more than a year he lived in forests and caves, returning home to find his wife dead and his children vanished.

Freedom is not always free.



The Waiialua Community Association is beginning to open its facilities following current Covid-19 protocols. Under current regulations, inside activities are limited to a maximum of 50 people. Partial opening of our office will be posted at a later date. Please call our office for details at (808) 637-4606 or email us at wca96712@hawaii.rr.com should you have any questions. All users entering our facilities will be required to wear face masks and observe social distancing. We are committed to keep our community as safe as possible during this current health crisis. Stay safe.



# MAHALO FOR YOUR SUPPORT!



We are eternally grateful to this community for helping us find our dad, Bob Walker. Life would be so much more difficult if we had to move on without knowing what happened to him. After a month-long search, Bob was found on June 14th in the Pūpūkea-Paumalu trail system. We would not have found him without all of you and the amazing (and huge) team of people that helped make things happen and kept us going. This was 100% a community effort which included hundreds of field and behind-the-scenes volunteers.

We are missing our dad and grieving our loss but trying to focus on all the positives. Bob spread joy and brought people together his whole life. He lived a life of serving and helping others - he was a pastor, an Army service member, a regular visitor to nursing homes, a volunteer for Meals on Wheels, a coach for our sports teams, and a proud and loving father and grandfather.

In a time with much uncertainty, Bob brought people together, again, in fellowship. It seems to have been his lifetime gift. Many friends and community members throughout the search said they were personally uplifted by either volunteering or seeing the community come together, especially during such a difficult time. These stories would have filled Pops up with so much love and joy and floated him straight up to Heaven. We are forever grateful for all the support to help us find him.



## SPECIAL MAHALO

- Search Tech Advisory Team (Chris Berquist)
- OSAR
- FEMA USAR K9
- Kauai Search Dog Association
- Redpoint Resolutions
- Honolulu Police Dept.
- Honolulu Fire & Rescue
- Paradise Helicopter
- Kam Schools Security
- Girl Scout Camp
- Boy Scout Camp
- Waimea Valley
- Military Range Control
- DLNR
- Kahuku Motorcross
- NOAA PIFSC
- ARC Document Solutions
- Kokua Foundation
- Drone Services Hawaii
- Spaghettini
- Academic Multi-media Lab, Brigham Young University
- Ke Nui Kitchen
- Maya's Tapas & Wine
- Aloha Graphics
- Sunset Beach Homes Realty
- Wicked Slush Hawaii
- Kahuku Medical Center
- Gentry Homes
- KITV
- KHON
- Hawaii News Now
- Star Advertiser
- Jen Homcy's Italian Kitchen :)
- Wicked HI Café
- Starbucks Haleiwa
- Darley & Co.
- Elephant Thai
- Surf N Salsa
- and many more!!!

**ALL OUR LOVE**  
**- THE WALKER FAMILY**





# CAR WASH

Saturday, July 18, 9A-2P at  
Waialua Community Association

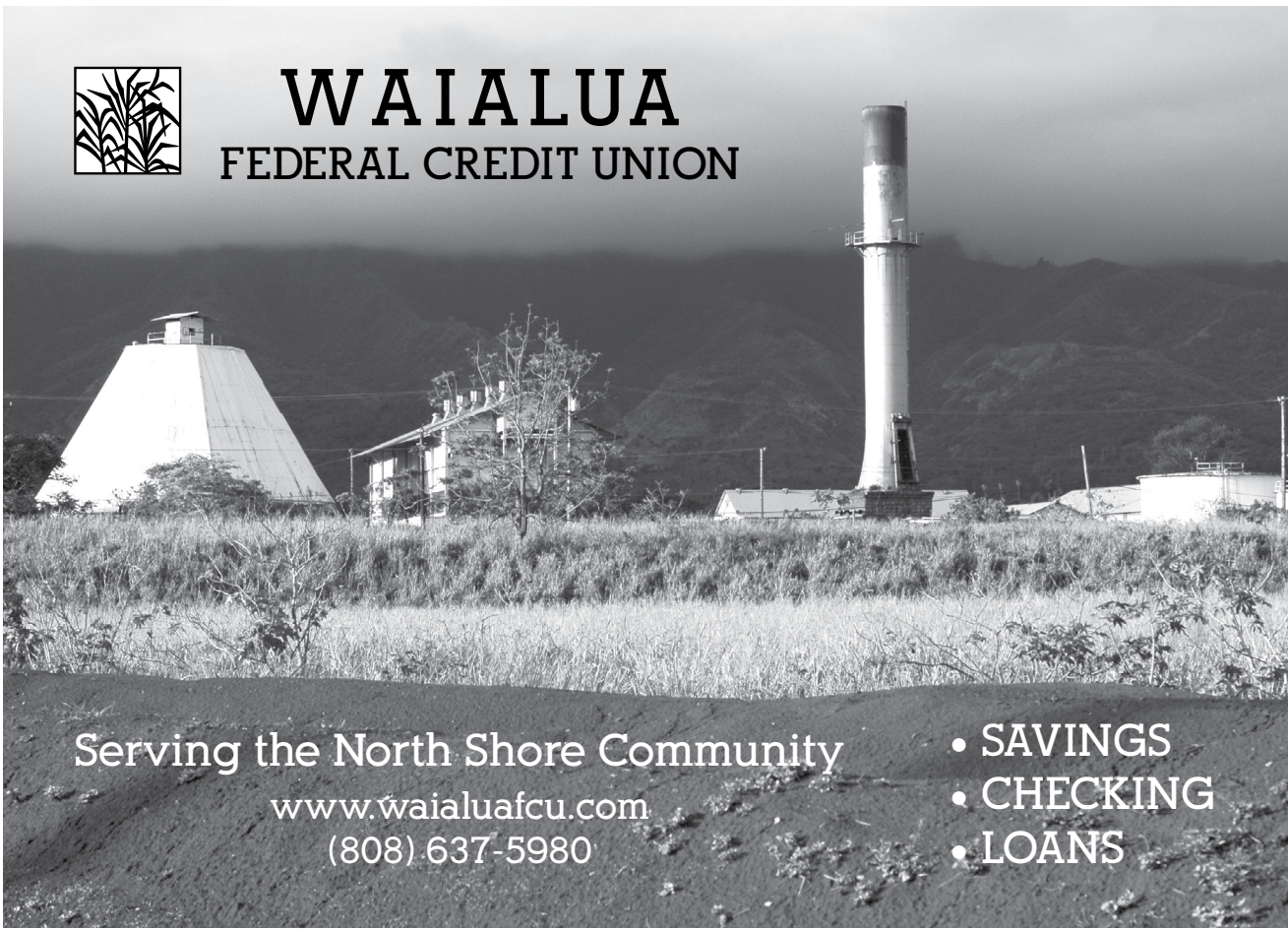
All proceeds go to the North Shore Food Bank

Operation Backpack donations can also be dropped off.

Mahalo for your support!



## WAIALUA FEDERAL CREDIT UNION



Serving the North Shore Community

[www.waialuafcu.com](http://www.waialuafcu.com)  
(808) 637-5980

- SAVINGS
- CHECKING
- LOANS



# BULLETIN BOARD

**CELESTIAL**  
Natural Foods



Featuring the largest selection of certified organic produce on the North Shore.  
No panic...ours is organic.  
Open 7 days.  
Mon.-Sat. 9am-7pm.  
Sun. 9am-5pm

66-445 Kam. Hwy  
Haleiwa, Hawaii 96712  
Next to the Post Office  
808-637-6729 • 808-637-1922 fax

## LTC

### Laie Trucking Company, LTD

\* Ready Mix Concrete \* Recycled Aggregates  
\* Pump Service \* Hauling \* Equipment Rental

PH: (808) 293-8710      PH: (808) 293-1296  
P.O Box 121      FAX: (808) 293-2890  
Hau'ula, HI 96717      laietrucking@hawaiiantel.net

"A LOCAL COMPANY, BUILDING A LOCAL COMMUNITY"

## N-C PLUMBING & SUPPLY

Cont. Lic. No. C-8913



- RESIDENTIAL & COMMERCIAL SALES & SERVICE
- CONTRACTING & DESIGN • HOME PLUMBING SERVICE
- PLUMBING FIXTURES, HEATERS • FREE ESTIMATES

Nestor P. Calilao (Owner)	Bus:	637-8662
P.O. Box 769	Res:	638-5157
Waiialua, HI 96791	Cellular:	372-8718

## Saccoccio & Lopez

ATTORNEYS AT LAW

TRIAL LAWYERS

*Serving Hawaii since 1984*

**637-7611**

Personal Injury -Property damage  
Criminal Law - Traffic Crimes  
Landlord Tenant - Bankruptcy



## COWPER CONSTRUCTION

GENERAL ENGINEERING CONTRACTOR

Full Service Sitework  
Contractor  
Septic Systems & Tanks  
Since 1978

Michael Cowper 638-7200  
cowperhawaii.com

LIC. #AC 18275

## NORTH SHORE PHOTOGRAPHY

HALEIWA, HAWAII

Celebrating 40+ years of Professional Photo Services and Historic Images to the Community.  
search: northshorephotohawaii.com

## Munden Design & Build

Lic.#BC19632

Design • Plans • Permits • Construction  
Additions & New Residences

**808 391-8616**

*Providing quality work since 1978*

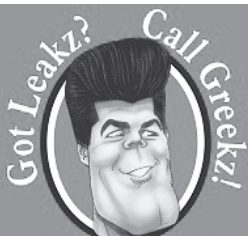
## PARADISE

"IF YOU BUILD IT, WE WILL PLUMB"



New Construction, Repair, Remodels

Dale Christensen C-29856 (808) 368-1473



Got Leakz? Call Greekzi!  
372-1820  
Greekz Plumbing

## Greekz Plumbing

License# C-32939  
Phone **372-1820**



KATHI LEE ALBIAR  
OWNER/BROKER - RB 17327

808-358-4139  
[KATHI@ALBIARREALTY.COM](mailto:KATHI@ALBIARREALTY.COM)  
[WWW.ALBIARREALTY.COM](http://WWW.ALBIARREALTY.COM)

SALES & PROPERTY MANAGEMENT SINCE 1993

SUSTAINABLE COASTLINES HAWAII PRESENTS



# ISLAND WIDE CLEANUP



LOCATIONS ACROSS O'AHU

## 07.11.20

CHECK IN 9AM



← NORTH

JOIN SCH AND FRIENDS TO #CLEANYOBEACH IN SMALL GROUPS ACROSS THE ISLAND

REGISTRATION REQUIRED  
BIT.LY/ISLANDWIDECLEANUP



Mahalo to our sponsors



"OFF THE WALL"

In collaboration with



First Insurance Company of Hawaii



For more information visit [sustainablecoastlineshawaii.org](http://sustainablecoastlineshawaii.org)





# 'Ohana Work Days

BRING THE OHANA

MAKING AN IMPACT TOGETHER

MAKE A RESERVATION

**EVERY  
SATURDAY**

10AM-12PM

\*\*\*\*\*

JULY 11 / JULY 18 / JULY 25  
AUG 1 / AUG 8 / AUG 15 / AUG 22

\*\*\*\*\*

For more info or to register visit:  
[www.lokoea.org](http://www.lokoea.org)

**HELP  
RESTORE  
LOKO EA  
FISHPOND**

62-450 Kamehameha Hwy.  
Haleiwa, 96712

**'OHANA**

AND FRIEND GROUPS!

\*\*\*\*

LIMITED PARTICIPANTS  
COVID-19 PROTOCOL

\*\*\*\*

FOR QUESTIONS EMAIL:  
[INFO@LOKOEA.ORG](mailto:INFO@LOKOEA.ORG)  
OR CALL: 808-637-3232





# CLASSIFIEDS

The North Shore News is published every other Wednesday and mailed free of charge to all North Shore homes and businesses.

**PRESS RELEASE POLICY:** Submit press releases, mail or email to Editor, North Shore News, P.O. Box 117, Haleiwa, HI 96712. Please type your releases and keep them shorter than 200 words unless they are of an unusual news interest. Releases should be viable news stories and are published on a **space available basis only**, with priority given to those received in our office first. You may attach photos. We are not responsible for the return of any photos. All materials are submitted at owner's risk. We reserve the right to edit and/or refuse all submissions including advertising.

**EDITORIAL POLICY:** We welcome articles and letters from our readers. Letters to the Editor are published on a space available basis only and preference is given to shortness of length, and quality of content. We prefer to run not more than one letter, per person, per 6 month period. Letters subject to edit.

Views expressed by our contributing writers and advertisers do not necessarily reflect the view of the management and staff of the North Shore News. All rights reserved. Reproduction in whole or part without permission is prohibited. © 2020.

**Editor & Classifieds**

Linda Seyler

**Typography**

Downtown General Store

**Contributing Writers**

Tom Jacobs

Betty Depolito

State Representative Lauren Matsumoto

Senator Gil Riviere

Councilmember Heidi Tsuneyoshi

**Photography**

Banzai Productions

Facebook: NSNewsHaleiwa



Please recycle this newspaper.

**SERVICES**

**SHORE ELECTRICAL SERVICE**

New Const-Remodels  
638-0049/Lic#C20777

**Computer Problems?**

I can fix any MAC or PC.  
Chris 371-3089

**Andres Plumbing**

All your plumbing needs  
808-256-7337 Lic#C24500

**DRAIN CLEAN SERVICES**

256-7337 Lic#24500

**North Shore  
Pet Nanny**

Experienced Pet Sitting,  
Walking, Drop In Visits  
Call Kathryn  
808-489-3645  
Reasonable Rates



**Aloha Window Cleaning**

Gutter Clean Outs  
Pressure Cleanings  
Window Cleanings  
Call us today at  
808-638-1630

**ANGELS  
PLUMBING**

Repairs  
Remodeling  
Renovation

**638-7878**

Lic. #C12004



**DOG/CAT NAIL  
TRIMMING**

At your home- only \$20.  
Call 808-388-5336

**MASSAGE THERAPY**

(808) 375-3879  
Lic. MAE 2071

**Haleiwa JUICE**

**Paumalu Electric Inc.**

C 18074

Residential & Commercial  
New Installation & Repairs  
Renovations. Remodels  
Electric Meter Replacements

Dave Hancock 638-9054

**ESTRADA'S  
WE HAUL 'EM**

Garbage-Rubbish-Trash  
Call Rick 808-216-9419

**ALOHA COMPUTER**

PC/MAC Repair/Virus  
Removal

MOBILE COMPUTER  
REPAIR SERVICE

**372-2667**

**CS EuroCars Kapolei  
Mercedes Repair Shop**

with low labor rates  
ASE Certified Technician  
27 years experience  
2116 Lauwiliwili St. Unit 104F  
Kapolei, HI 96707 - Under New mgmt.  
808-682-1957

**BUSINESS SERVICES CENTER**

Fast & Convenient Copy, Fax, Scan,  
Computer/Internet, Laminate, & More



Across from  
the Haleiwa  
Post Office

**637-4558 • gonorthshore.org**

#gonorthshore

**GERMAN CAR SERVICE**

Professional-Qualified

Technician

Call Gary

637-6800

**HOT YOGA  
NORTH SHORE**

**We re-open June 19!!**

New website, please sign-up!

[www.hotyoganorthshore.com](http://www.hotyoganorthshore.com)

**HARVEY'S TOWING LLC**

24 hr Towing Service  
Lockouts, Jumpstarts &  
Recovery. Specializing in  
opening locked car doors.  
Call anytime 478-0333

**Don't Want To Go  
To The Gym?**

Private Fitness Training & Yoga  
I Come to You!  
808-282-8995

In person, video and phone options  
[evolvemobilefitness.com](http://evolvemobilefitness.com)  
[machelle.lee@gmail.com](mailto:machelle.lee@gmail.com)

**Hawaii Tree Co.**

Trimming & Removal  
Professional-Reliable  
Free Estimates  
**462-2749**

DON'T WANT TO GO TO THE  
GYM? Private Fitness Training &  
Yoga I Come To You! 808-282-8995

In person, video and  
phone options available  
[www.evolvemobilefitness.com/](http://www.evolvemobilefitness.com/)  
[machelle.lee@gmail.com](mailto:machelle.lee@gmail.com)

**Waialua Farmer's  
Co-Op Market**

Historic Waialua Sugar Mill  
Saturdays, 8:30am - 1pm  
**Masks Required**

Would you like to get the  
North Shore News via  
email in COLOR! Just send  
us a message at:  
[NSNHaleiwa@gmail.com](mailto:NSNHaleiwa@gmail.com)  
and you get the NSN  
online every two weeks!

**HOW TO CONTACT THE NORTH SHORE NEWS**

Letters to the Editor, and other items submitted for publication consideration  
may be sent to us via:

MAIL: P.O. Box 117, Hale'iwa, HI 96712

E-MAIL: [NSNHaleiwa@gmail.com](mailto:NSNHaleiwa@gmail.com)

[NSN4Linda@gmail.com](mailto:NSN4Linda@gmail.com)

PHONE: (808) 780-8037

[www.northshorenews.com](http://www.northshorenews.com)



# CLASSIFIED ADS

**Next Issue - July 29, 2020**  
**Deadline Date - July 17, 2020**

**NOAA Stranded, Entangled Injured Sea Turtles (808) 725-5730**

**OFF da ISLAND**  
 Are you leaving Oahu on vacation or business? Do you live on a neighbor island, the mainland or foreign country and subscribe to the North Shore News? Send us a photo of someone in front of a sign or landmark holding a copy of the NSN. Email your photo along with the person or persons' name, community of residence, contact info and photo location to: NSNHaleiwa@gmail.com.

**Classified Ad Rates**  
 3 lines (min.) \$18.89  
 4 lines \$25.13  
 5 lines \$32.45  
 1" Box Ad \$41.88  
 (27 characters in each line)  
 Include your contact information.  
 \*Ads can be text, or emailed.  
 Pay by check payable to: North Shore News or credit card by phone order.  
 We reserve the right to refuse any advertisement with a full refund.  
 North Shore News • P.O. Box 117, Haleiwa, HI 96712  
 (808) 780-8037 • NSNHaleiwa@gmail.com

**FREE ADS**  
 Garage & Yard Sales, Reunions, Lost & Found.  
 Email ad to: NSNHaleiwa@gmail.com



**Marianne Abrigo, Properties**

Specializing in - North Shore Real Estate

Ask for our list of available properties and/or a free market analysis.

**Marianne M. Abrigo**  
 "Realtor since 1974"

Office 637-3511  
 Fax 637-0777  
 Email mabrigo222@aol.com

## HELP WANTED

**Professional Pet Groomer**  
 Poodles A Must  
 Part-Time in Pupuakea  
 Competitive compensation based on experience, references required.  
 Call Moani 638-7073

**WANTED; Driver**  
 Ka'oa'o 366-6926  
 'Olelo Hawaii a plus

**Caregiver Needed in Kahuku**  
 Please text 425-435-7791  
 For information

**Job Foreman/Assistant Landscape Manager**  
 Full-Time - 40 hrs per week  
 Benefits Included  
 Previous supervisory experience beneficial  
 Own transportation required  
 \$19-\$20/hr, based on experience  
 Call (808) 838-1202

North Shore Chamber of Commerce is looking for volunteers to help with our Visitor Center sales and services. 3 hour shifts, Monday through Friday are available. Come be part of our team, helping the North Shore be a better place to live, work, and play!

**Landscape Maintenance**  
 Full-Time - 40 hrs per week  
 \$16-\$18/hr  
 Benefits Included  
 Own transportation required  
 3+ years experienced req.  
 Call (808) 838-1202

**Retail Sales Surf & Sea**  
 Hawaii's Ocean Sports Headquarters is always looking for hard working, energetic people to become a part of our sales team. Good pay, bonus, benefits. Japanese speaking a plus. Ocean sports experience and dive instructor wanted. Please contact surfnsea@surfnea.com for details.  
 Apply in person daily 9am-7pm  
 62-595 Kam. Hwy., Haleiwa

## FOR SALE

**LANDSCAPING PLANTS FOR SALE**  
 (808) 638-7740

## FOR RENT

Commercial space for rent at Waiialua Shopping Center. 1050/mo plus tax. 10ft x 30ft deep. Great location in the middle of the main center building. Includes water and restroom in unit. 6mos lease available.  
 Please call 808-341-0585 for more info.

**TABLES & CHAIRS**  
 Call North Shore News 780-8037  
 All proceeds go to the North Shore Food Bank

## MISCELLANEOUS

North Shore Food Bank @ nsfoodbank

**NEED HEALTH INSURANCE?**  
 You may be eligible for MED-QUEST (State Medicaid) or the Federal Marketplace (www.healthcare.gov) For Federal Marketplace, you may enroll now if you:  
 -Lost job and employer-covered health insurance  
 -Experienced a change in household income  
 -Moved from another state or country  
 -Recently released from prison  
 Call Us!  
 Legal Aid Society-536-4302 #2  
 Oceania: 754-7303  
 Med-Quest: 692-8151

**SHAPE YOUR FUTURE**  
 Complete the 2020 Census  
 2020Census.gov

**OAHU SPCA**  
 Wahiawa Clinic Hours  
 Thursday- Saturday  
 8:30 a.m. to 4:30 p.m.  
 (808) 754-1519

FREE Wooden Pallets  
 Good Condition  
 See Bernie at the Waiialua Community Association  
 office 9am-2pm  
 637-4606

## Happy 4th of July!

**KQNS 107.3 FM CHRISTIAN RADIO**  
 Inspirational, Health Music, Addictions, Marriage, Prophecy, Stories, etc.

**OPERATION: BACKPACK**  
 This year in light of COVID-19 our Operation: Backpack team has decided to distribute the needed school supplies only. NO backpacks this year. See page 11 for donation information.

**CAR WASH Saturday, July 18, 9am -2pm**  
**Waiialua Community Asso. All proceeds will go to the North Shore Food Bank.**  
 Operation: Backpack school supplies and donations can also be dropped off.  
 If you would like to volunteer please come by or call 780-8037 for more info.

**University of Hawai'i: Clinical Healthcare Professionals Needed for Contact Tracing**  
 With the increasing numbers of COVID-19 cases throughout Hawai'i, the UH-DOH Contact Tracing Training Program is looking for more applicants with a clinical healthcare background and an undergraduate degree who are available to be a full-time contact tracer for up to three months in the near future. A smaller number of applicants who are able to serve part-time (at least 20 hours per week), will also be considered. If you're interested in signing up or learning more:  
<https://www.hawaii.edu/news/2020/06/25/full-time-contact-tracers-needed/>

Good news! Computer time by appointment has been added to the expanded list of library services!  
 · Library patrons may reserve one 60-minute computer session per day using the library's computer reservation system on the HSPLS website (librarianshawaii.org) HOME page or by calling the library branch they would like to visit.  
 · Unreserved appointment times will be offered for walk-ups on a first come, first served basis.  
 · Library patrons are limited to a total of no more than two sessions per day.

# Friends and Family Taking Care of Friends and Family *With an Abundance of Aloha!*



*K*ahuku Medical Center is moved by the numerous organizations, businesses, community members, medical professionals and others who have generously shared aloha in these challenging times. Your donations of face masks, face shields, food, care packages and messages of support have provided for physical, emotional and spiritual wellbeing. Mahalo nui loa for uplifting our community!

## *Mahalo to Our Community!*

Ace Hardware • Aloha Collection • Aloha Harvest • Apolosi Lauhingoa • Asato Ohana • Bairy Sweet Treats  
 Beach Dolls Hawaii • Boar's Head Meats • Brittany Suafoa • Coca-Cola Bottling Company of Hawaii • Community Seamstress  
 Creature Coffeeshop • Dole Plantation • Domino's (Hau'ula) • Dr. Erin Smith • Elite Mechanical, Inc. • Every 1ne For One Hawaii  
 First Assembly of God • Hawaii Cyber Lions Club • Help is on the Way • Hui O He'e Nalu • Kahuku New Life Kaimana Plemmer  
 Kimberly Cummings • Kini Zamora Designs • KMC team members • LāHui Foundation • La'ie Church Ward 2  
 Leonard's Bakery • Leslie Nakajima • LuLaRoe • Makuakai Rothman • Nā Kūpuna Makamae  
 Naomi Masuno • Oceanside Hawaii • Pacific Gateway • Papa Ole's • Peter Opdahl  
 Purvé Donuts • RHNL – Realty Honolulu • Sergeant Barton Drummond • Sister April Curtis  
 Straub Medical Center • Subway (La'ie) • Tanoai Ohana • The Keiki Dept  
 Tiare Fullerton • Wai'ono Designs 808 • Zak Noyle Photography  
 And other generous individuals



www.kmc-hi.org | 808-293-9221

