



“E Ala Na Moku Kai Liloloa”

In This Issue:

Scientist Make a Whale of a Discovery in Performance Surfing
Page 6

About That Economic Re-Opening Senator Gil Riviere
Page 8 & 9

Letter to Governor Ige North Shore Chamber of Commerce
Page 10



NORTH SHORE NEWS May 6, 2020 VOLUME 37, NUMBER 7



Hau'ula Fire Department

AES Na Pua Makani Donates 1,800 Face Masks to North Shore Community

At the end of April, AES Na Pua Makani purchased and distributed 1,800 KN-95 face masks to the communities of Kahuku, La'ie and Hau'ula. Face masks were handed out at a weekly drive-up food distribution event held at the Courtyard by Marriott O'ahu North Shore. Team members also continue to deliver masks to North Shore first responders, school cafeteria workers and kupuna.

“We are deeply committed to being good neighbors to the North Shore community,” said Verla Moore, community liaison for AES Na Pua Makani. “When we heard from residents that there is an immediate need for face masks – especially for the hard-working men and women in our school cafeterias who prepare and distribute meals daily to our students – we were happy to answer the call.”

AES Na Pua Makani, which is slated to be operational this summer, remains dedicated to supporting the North Shore community in meaningful ways including pledging more than \$4 million over the life of the project to benefit nonprofit organizations and initiatives in the area.

PRSRT STD ECRWSS U.S. POSTAGE PAID HONOLULU, HI PERMIT NO. 1479	RESIDENTIAL CUSTOMER *****ECRWSSSEDDM****
--	---

NORTH SHORE FOOD BANK

Partnering with North Shore News & Alea Bridge

Sponsors: Hawaii Food Bank, Aloha Harvest & Lili'uokalani Trust

DISTRIBUTION UPDATE

Wednesday, May 6, 12noon, WCA

(Waialua Community Association)

Wednesday, May 20, 12noon, WCA

(Waialua Community Association)

Wednesday, May 27, 12noon, Waialua District Park

For more information and donations contact : Linda (808) 780-8037



OFF da Island in South Africa

Haleiwa resident Penny Nakamura and her husband Hal Koyama live part time in Durban, South Africa where Hal brings hydrogen fuel cells to Sub-Saharan Africa. Penny and Hal were suddenly back in Hawaii after the State Dept.'s Stage 4 Alert and went into self quarantine. Penny is pictured here at the Cape of Good Hope.

The Hale'iwa Family Dental Center, Ltd.



- Adults and children
- Most cases completed in 4-12 months
- Clear braces available
- Lower cost
- University tested
- Used for over 20 years

Produced by Todd R. Okazaki and Staff

"Straighten those crooked teeth that have bothered you for years"

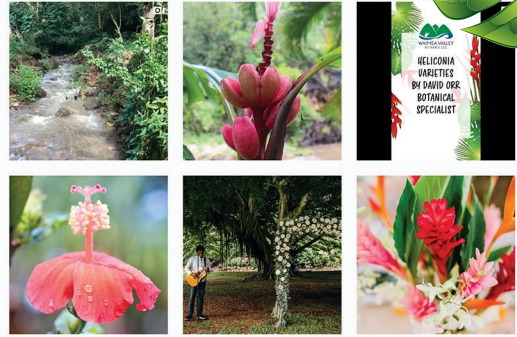
Conveniently located behind First Hawaiian Bank in Historic Hale'iwa Town

Call 637-9652 for your reservation



PLEASE SUPPORT WAIMEA VALLEY!

Mahalo to our incredible North Shore community for coming together during these unprecedented times. If you are able, please consider supporting the Valley and helping see us through our temporary closure. We look forward to welcoming you back here soon.



MAKE A DONATION

Visit waimeavalley.net to make a tax-deductible donation. Funds benefit year-round programs to preserve the Valley's cultural and natural resources.

STAY SOCIAL

Help share our story and stay up to date with the latest news from the Valley. Find us on Instagram (@waimeavalleyoahu) and Facebook/Twitter (@waimeavalley).



PICK UP AN ANNUAL PASS

Give the gift of year-round Waimea Valley admission. Annual passes available for individual (\$50), family (\$100), and lifetime (\$1,000); email info@waimeavalley.net to purchase.

PLAN TO RECONNECT

Sign up for our mailing list at waimeavalley.net, and be ready to plan your next family visit or volunteer opportunity. Special events and school group inquiries welcome!



WAIMEA VALLEY
HI'IPAKA LLC

NORTH SHORE, O'AHU

CALL: (808) 638-7766

@WAIMEAVALLEY  

@WAIMEAVALLEYOAHU 

 WHERE HAWAI'I COMES ALIVE

WAIMEAVALLEY.NET



Mahalo to Kaiser Moanalua Medical Center Emergency Services!

Kaiser Moanalua healthcare workers would like to thank Ted's Bakery, Kai Ku Hale and North Shore Coffee Roasters who brightened their day with very thoughtful donations.

Mother's Day Message

Naty Hopewell, APRN

Ko'olauloa Community Health Center

Since we've had this COVID crisis consume our lives recently, celebrations have been on hold due to social distancing. Consequently, this upcoming Mother's Day will be a more subdued event. I would like to celebrate all those mothers out there who usually put their children's needs ahead of their own; who taxi their kids to practices and games; who lose sleep when helping their kids with special projects; who rush to school with cupcakes on their children's birthdays; who work at one or two jobs to help support the family; the list goes on.

I would encourage all you mothers to create balance in your lives. Remember that in order for you to meet all the demands of motherhood, you need to be in good physical and mental health. This means eating a well balanced diet, getting adequate exercise, getting a good night's sleep, making time for yourself and doing things to make you happy. Life with children can be chaotic so meeting the above can be a challenge. There will be times when you will be exhausted; take time to

re-fuel. You don't want to be a grumpy mother just because you're tired and overwhelmed.

Your greatest task is being a loving, patient teacher for your children. Teach them how to be independent by giving them responsibilities. Teach them how to pick up their toys, how to make their beds, and later how to cook, do the dishes, do the laundry, and how to problem-solve. By becoming self-sufficient, they will develop self confidence which will contribute to a healthy self esteem.

Remember that children learn by example. Be a good example for your children; show them how to create balance in their lives and be happy contributing family members.

Ko'olauloa Health Center
293-9231

*We accept everyone regardless of ability to pay.
Improving the quality of life for all. Imua!*



**Councilmember
Heidi
Tsuneyoshi
Serving You in District 2**

Aloha,

For this Mother's Day edition I wanted to start by wishing all our Mother's a very Happy Mother's Day. Thank you for all you have done and continue to do to nurture your children and our communities. As we all find creative ways to spend the day with our loved ones I wanted to share a little about my mom and wish her a very Happy Mother's Day.

Once you become a mom you develop a greater appreciation for and understand the full extent of what it means to be a mother. It is impossible to fully appreciate the many sacrifices it takes to be a mom and the dedication required to raise a child in Hawaii today. When I became a mom, I quickly realized how much my mom did to make sure our family was taken care of and that we had everything we needed.

One example is our time in Washington DC. Rather than buy herself a winter wardrobe, my mother spent any extra money she had to make sure my brother and I had the clothes we needed to survive the brutal winters on the east coast. It was so different from the warm weather and sunny skies we were used to in Hawaii. While my father was stationed in DC, my mother bought just one winter coat for herself and wore it over her mu'umu'us and other clothing she would normally wear back in Hawaii. Looking back on it, I realize not only how cold she must have been, but how uncomfortable she must have felt going to church and other events with clothing that was not recognized as winter wear on the mainland and how others may have reacted to her. Yet she kept wearing her beautiful smile throughout which never went out of season and we never realized what she gave up for us.

Through the years she has made many of the same sacrifices for my brothers, sister and myself. I know it was not easy providing for the four of us, but she always did her best to make our lives better. Looking back now I appreciate all the little things she did like packing lunches and making musubis for beach days. Back then, it seemed the coolers packed themselves and the musubis came together on their own. Once I became the one to pack up for the beach I realized how much she would do to get us ready and create special memories.

My mom and I have developed a better understanding of each other since I became a mom and true to form she has continued to support me and my two daughters in every way she can. Driving three times a week from Wahiawa to town

to watch the girls while I went to graduate school and supporting us in so many other ways. She provided us with the support we needed to become the women we are today.

So to my mom, Billie Ann (Ah You) Lairsey, Happy Mother's Day! Thank you for all you have done and continue to do for all of us. We appreciate and love you so much!

Let's all continue to appreciate each other and stay safe and positive during this time. Once again, Happy Mother's Day!



Billie Ann (Ah You) Lairsey



Heidi (Lairsey) Tsuneyoshi



BIG WAVE SHRIMP

Featured on Food Networks Diners, Drive-Ins & Dives

Garlic Shrimp, Steak, Ribs, Hot Dogs & More

66-521 Kamehameha Hwy, Haleiwa

(808) 366-2016 bigwaveshrimp.com

TAKE OUT open 7 days

11 a.m.-6:30 p.m.

Delivery by dudefoodhi.com

Scientists Make a Whale of a Discovery in Performance Surfing

The report is the first to measure that whale patterns applied to surfboard fins can improve a surfer's maneuvers and performance.

Haleiwa, Hawaii, April 21, 2020-- The Surf Engineering Association (SEA) today announced the publication in the scientific journal PLOS ONE of Performance evaluation of humpback whale-inspired shortboard surfing fins based on ocean wave fieldwork.

Lead author and President of SEA Dr David Shormann says that since the discovery that a humpback whale's unique flipper shape is key to their incredible maneuverability and control, many engineering applications have been tried; everything from wind turbines to bicycle wheels.

"Our paper in PLOS ONE is the first to measure that whale patterns applied to shortboard surfing fins can improve performance, especially during a cutback maneuver," explains Dr Shormann who has been observing whales in his "backyard" in the Hawaiian Islands Humpback Whale National Marine Sanctuary.

Co-author Professor Marc in het Panhuis from the Surf Flex Lab at the University of Wollongong in Australia, explains that the power generated during a cutback can be a significant factor in a surfing contest, as powerful turns with high rotation rates tend to receive higher scores from the judges.

The authors used a patent-pending, "Real Whale" (RW) design that allows a designer to apply humpback whale-like flipper patterns to any wing-shaped device. Fieldwork for the project involved surfers of different skill levels surfing almost 2,000 ocean waves from around the world, mostly from the "proving grounds" of Oahu's North Shore in Hawaii. High-quality commercial fins were compared to carbon fiber RW prototypes manufactured using 3D printing.

"We attached Instrumentation such as a GPS and motion sensor to the surfboards to measure surfing and fin performance," says Professor in het Panhuis. The team defined, measured and calculated eighteen turn performance values. The key outcomes of the study showed that RW fins resulted in improved power generation and turn rates, while a skilled surfer could improve their performance relative to a top-ranked professional simply by using RW fins.

Dr Shormann believes that combining field work with simulation is crucial for advancing the understanding of how fins deliver and impact performance. "Our team at SEA has also performed computer simulations of RW fins compared to other fin designs. We will present those results June 22 at the International Sports Engineering Association Conference (online due to COVID-19)."

Read the full report along with a selection of photos and video content. Link to PLOS ONE report: <https://journals.plos.org/plosone/article?id=10.1371/journal.pone.0232035>

Hawaii Public Libraries

There is a wealth of digital collections to support reading, learning and being inspired. All you need is your library card number and pin (last 4 digits of your phone number). If you do not have a library card you can apply for one online.

To access all of the digital collections simply go to librarieshawaii.org, where all of the major digital collections and library updates can be found in Quick Links:

- [Library Updates](#)
- [Apply for a Library Card Now](#)
- [PressReader: magazines & newspapers](#)
- [New York Times](#)
- [RB Digital: magazines & audiobooks](#)
- [OverDrive: ebooks and audiobooks](#)
- [Bookflix: kids' ebooks](#)
- [Kanopy: streaming movies](#)
- [Mango: learn a language](#)

Hawaii State Public Library System hotline Monday – Friday, 9:00 am – 4:00 pm, simply call 586-3500 to connect with a library staff member.



Mahalo Banzai Sushi!

Bartender Sofia handing out free sushi bentos for those in need on Easter Sunday.



**Representative
Lauren
Matsumoto
Serving You in District 45**

Aloha friends and neighbors!

As we're heading into another month of Stay at Home to keep the curve flat and to slow the spread of COVID-19, I want to share several updates about the things that my office and I have been working on including #malamamasks, Kawaihapai (Dillingham) Airfield, my brand new Hawaii Government Activity Book, Midsession Survey Results, and a special Mother's Day message.

First, in this Mother's Day issue, I want to honor my mother, Sharon Cheape, who has been one of my biggest inspirations throughout my life and career. In fact, during this difficult time her fearlessness and dedication to running the family egg farm is what inspired me to start the #malamamasks drive to protect essential workers like her who are vital throughout our communities. I wouldn't be the woman I am today if not for my mom. Take time this Mother's Day to honor the mothers in your life!

Our #malamamasks project has been so successful that I've partnered with my husband's family's business, Hawaii Mercantile, and some sewing professionals to produce 5,000 additional masks to the 2,000 that have already been sewn by community members. Because of the generosity and support of our community members, we've already provided thousands of masks to essential workers, including the entire Honolulu Fire Department!

Another exciting development for our community is the recently announced deadline extension for Kawaihapai (Dillingham) Airfield. On April 15, the Hawaii Department of Transportation announced that they would be extending the lease termination date to June 30, 2021 because of the COVID-19 crisis. This extension gives operators, me and my fellow legislators, and other advocates important time to pursue long-term solutions. I look forward to pursuing legislative action to preserve general aviation during the 2021 legislative session.

As families are working and learning from home during this time, parents are more aware than ever of the need to keep our kids occupied while also providing them with valuable learning experiences. My office, through months of hard work as well as the contributions of an incredibly talented cartoonist, has developed a brand new Hawaii Government Activity Book. It's filled with fun activities for kids to learn about the branches of government, the legislative process, and so much more. The difficulty level is targeted for kids around the 3rd Grade,

but kids of all ages can benefit from the content inside! You can download a copy from my website at RepMatsumoto.com or email RepMatsumoto@capitol.hawaii.gov to request a digital copy.

I also want to extend a huge mahalo to everyone who responded to my 2020 Midsession Survey. Thank you for making your voice heard even though the Legislature is currently recessed. You should be receiving another mailer soon with more detailed survey results, but I wanted to share some early data that the community provided about certain issues:

82% responded "Yes" when asked whether the State should prohibit foreign nationals and businesses from buying residential properties older than five years old. (SB 3110)

70% responded "Yes" when asked whether the minimum wage should be increased to \$13 per hour by January 1, 2023. (HB 2541)

72% responded "No" when asked whether the State should change the penalty for possession of less than two grams of illegal drugs (cocaine, heroin, meth, etc.) from a felony to a misdemeanor. (SB 2793)

82% responded "No" when asked whether 16 and 17 year olds should be allowed to vote in local and State elections. (SB 4)

Representative governments like ours work best when its citizens make their voices heard about some of the most pressing issues in our community. Your feedback helps inform the way I vote and make decisions in the Legislature. Thank you again for your feedback and please be on the lookout for more complete survey analysis in an upcoming mailer and on my website at RepMatsumoto.com.

And as always, please don't hesitate to contact my office if you have any questions or concerns about happenings in our community. You can reach me at (808) 586-9490 or at repmatsumoto@capitol.hawaii.gov.



Rep. Lauren Matsumoto and Sharon Cheape

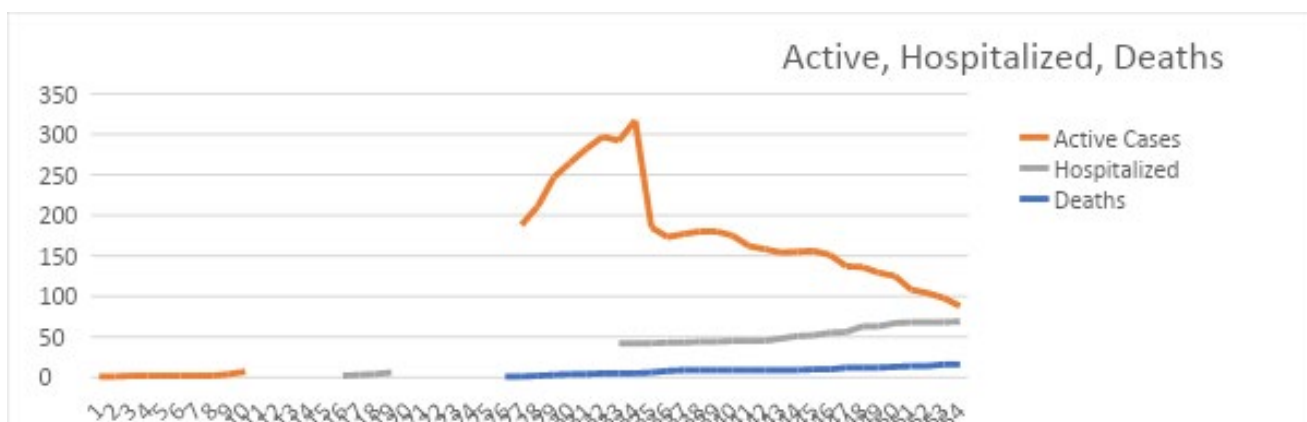


Senator
Gil Riviere
Serving Oahu's North and
Windward Shores

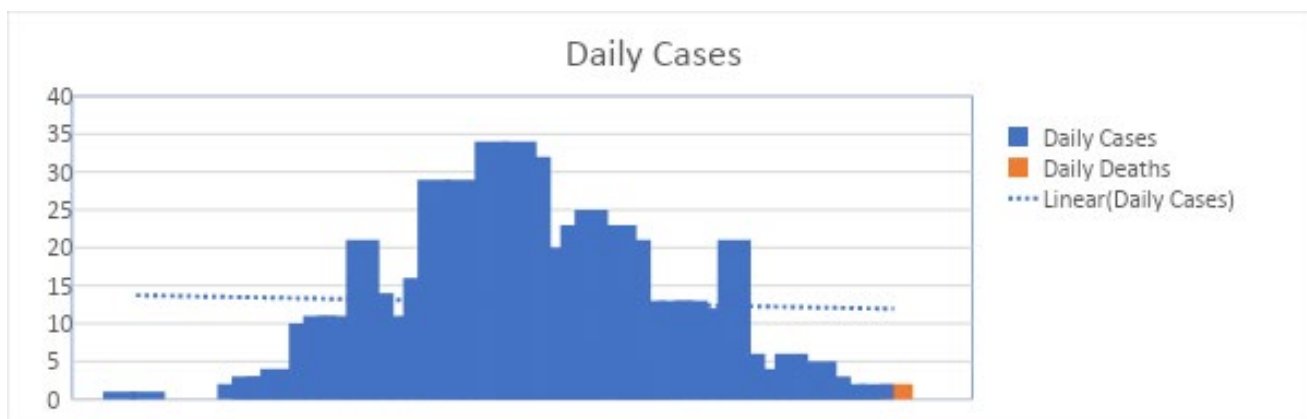
About That Economic Re-Opening

As we approach two months of stay at home orders and the number of new cases is down to one or two per day, people are asking when will the re-opening of small business and easing of the lock down begin? At the same time, everyone wants to know we will be safe.

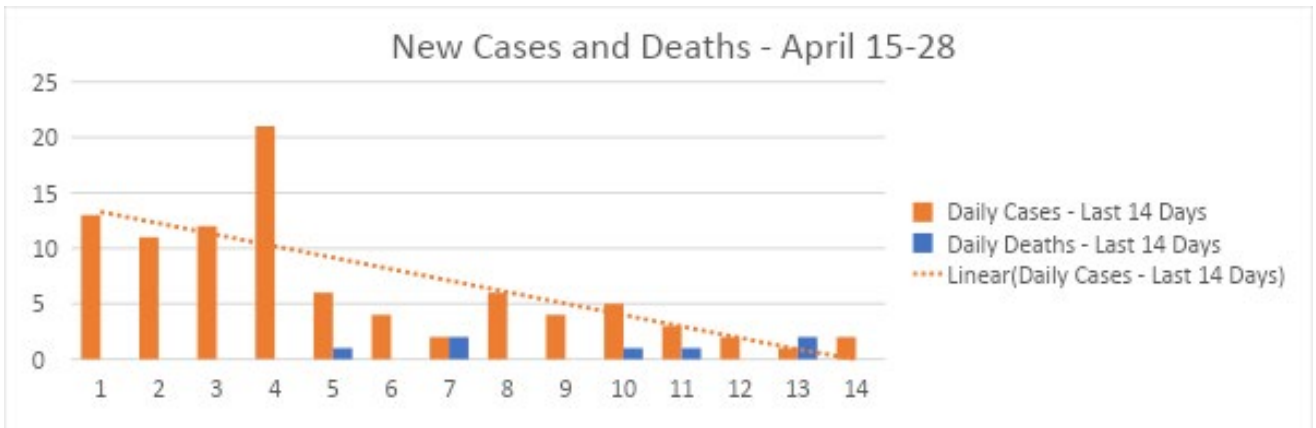
The first confirmed case of the novel coronavirus in Hawaii was announced on March 6, 2020. As of the writing of this article, the number of confirmed cases has climbed to 609, and there have been 16 virus related deaths, 13 of whom were seniors with pre-existing conditions. Nearly 30,000 tests have been conducted, 505 people have recovered, 88 cases are active, and 69 patients have required hospitalization.



Mayor Caldwell's Stay at Home Order began on March 23rd (Day 18 on the charts) and the Governor's 14 Day Quarantine for all arriving passengers began on March 26th (Day 22). The purpose of these orders was to "flatten the curve" so that our health care system would not be overwhelmed by severe cases as had occurred in Italy and was happening in New York. As seen in the Daily Cases chart, the curve has indeed been flattened.



The Guidelines for Opening Up America Again offer a three phased approach to advise public health experts to help state and local governments when re-opening their economies. Essentially, the guidance calls for a downward trajectory for 14 days of influenza-like symptoms, COVID-like symptoms, and number of COVID cases, plus patient treatment without crisis management and robust testing for healthcare workers. If the current trend holds, we will have met the 14-day test by the time you read this article.



Two months ago, there was widespread fear that patients would die because of a shortage of ventilators, and we did not know how contagious or lethal the virus would prove to be. We still do not know how contagious asymptomatic people may be, but the virus is clearly more dangerous for older people and those with pre-existing conditions.

New York, the worst hit region in the country, had 12,000 ventilators on hand when their governor urgently called for another 30,000. As it turned out, they never faced a shortage of ventilators, but they did suffer through a severe shortage of hospital beds during the peak demand. Fortunately for Hawaii, our experience has been entirely different.

Today, we are in a much better place to understand and deal with the novel coronavirus. Its spread did not overwhelm our health care system, the curve was dramatically flattened, we adapted to social distancing and mask requirements, we now have the capacity to perform 3000 tests a day in-state, we have the lowest infection rate in the country, and serological testing for antibodies is becoming available. It is time to begin opening up the local economy.

The day after Mayor Caldwell extended his Stay at Home Order from April 30th to May 31st, Likelike Drive Inn announced it could not survive any longer and would close its doors after 67 years of operation. Many businesses will not survive this extended shut down. Hawaii's unemployment rate of 37% is by far the worst in the nation and hundreds of thousands of laid off workers have been painfully waiting for long delayed unemployment checks.

The Governor decided to allow flower shops to reopen in time for Mothers' Day. The Mayor deemed it safe to walk in the park and he granted some small permissions, like using an automated car wash. I believe much more needs to be done, soon, to remove the restrictions that are no longer necessary and are crippling so many small businesses.

You cannot buy a bicycle from a bike shop, but you can buy one from a super store, and you can buy a surfing shirt at the same super store, but you cannot buy one at your local surf shop. There are countless inconsistencies and inequalities like these.

We have great hope for development of a new vaccine for this novel coronavirus, but time will tell if that hope is realized and if other therapies to help the sick recover can be found. With the continuation of social distancing, mask policies, and high awareness of this disease, we should be able to release local businesses now. When to allow tourists to return and how will the state function without tax revenues are more complicated questions.

Please do not hesitate to call or write if you have any opinions, questions or solutions that might help me better represent you. My phone number is 586-7330 and email address is SenRiviere@capitol.hawaii.gov. Follow us on FaceBook or online at SenatorRiviere.com. Mahalo.

Hawaiian Electric Company Update

Hawaiian Electric has suspended disconnections for non payment through June 30 to ensure customers' electricity needs are met as stay-at-home orders are extended due to the coronavirus pandemic. Customers should NOT worry about their power being shut off due to non payment through the end of June. Customers experiencing hardships due to the pandemic should contact Hawaiian Electric to discuss payment arrangements and options.



North Shore Chamber of Commerce News

Dear Governor Ige, Mayor Caldwell and Mr. Oshima:

The closure of businesses have adversely affected the economy and personal lives of the North Shore residents.

We are requesting that retailers, restaurants, and service businesses on the North Shore be allowed to open immediately. We are not now saying that the quarantine on tourists or other foreigners should be dropped. But local interaction among residents is a totally different thing. The North Shore Chamber of Commerce urges all involved that businesses should be reopened as quickly as possible but in no event later than the Wednesday before Memorial Day. With Memorial Day weekend fast approaching, which is a key date for most business, it is urgent that businesses are given as much lead time to prepare for employees returning, vendors supplies and physical COVID-19 safety requirements for their locations.

With less than 70 COVID-19 patients hospitalized throughout the state to date and the preparedness of hospitals being the cornerstone of criteria to open the economy, what data supports why further lockdown and damage to the economy is warranted? It appears that reopening is dependent on the city, state and hospitals performance in attaining benchmarks to opening the economy. We should know what are the benchmarks, how it the progress being measured and the progress to date.

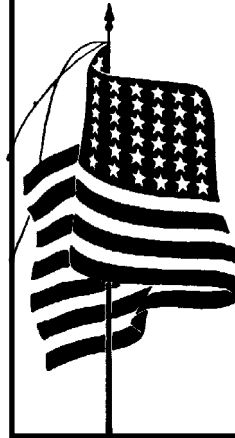
The North Shore Chamber of Commerce is asking for the data that quantifies the following immediately as time is of the essence.

1. With the level of testing and steady decrease in positive cases over the past few weeks what is the required maximum number of positive cases and over what period of time to meet the criteria to open sit-down restaurants and smaller retail and service businesses?
2. What is the trend of progress or lack of being made in accomplishing the mandate for hospital preparedness for COVID-19 patients. What level of hospital beds, equipment and PPE are considered "enough?"
3. Data that supports your position that small retailers are not equipped or able to operate safely as compared to large retailers that are opened selling the same products and servicing the same community.

Unless you can provide data proving it is not safe we strongly recommend the process of North Shore businesses to begin immediately with set opening dates and clear and precise requirements. If businesses, employees or customers do not feel comfortable with opening it will be their choice not to participate.

We look forward to your timely response.

With Aloha from the North Shore,
Howard Green, Chairman



May is National Military Appreciation Month and is a declaration that encourages U.S. citizens to observe the month in a symbol of unity. National Military Appreciation Month honors the current and former members of the U.S. Armed Forces, including those who have died in the pursuit of freedom.

Haleiwa Evangelical Mission International

Come and join us
Sunday's at Waialua
Elementary School Cafeteria

Sunday School at 9:00 am
Worship Services at 10:00 am

For Prayer
Call 637-4567

Blessed to be A Blessing

"Children's Church"

Why Knott Florist Your Flower Connection!

We got you!

*All kinds of flowers, roses and
arrangements.*

*We have beautiful gift baskets,
unique gifts and assortment of lei.*

Call us at 637-9380

for orders

Free deliveries in Waialua

**Happy
Mother's Day**
Open Saturday & Sunday
Waialua Shopping Center

O'ahu Storm Water Utility To Hold Virtual Community Meetings

HONOLULU (April 27, 2020) — The City and County of Honolulu will hold a series of virtual meetings about the proposed storm water utility for O'ahu. This second round of meetings will be held from May 20-30, 2020 and is intended to solicit further feedback from the public.

“Our communities are experiencing significant impact and hardship from COVID-19. After discussion with the Mayor and other City leaders, our department is proposing a revised approach to the introduction of a storm water utility for O'ahu,” said Ross Sasamura, Director and Chief Engineer of the City’s Department of Facility Maintenance (DFM), which is overseeing the study.

The revised approach, which includes a proposal to delay any new fees related to a storm water utility, will be addressed in the upcoming meetings. Meetings will be held online at the following times, and will include a slide show, a Q&A, and polling questions.

- Wednesday, May 20, 2020 at 5:30 p.m.
- Thursday, May 21, 2020 at 2:00 p.m.
- Friday, May 22, 2020 at 10:00 a.m.
- Saturday, May 23, 2020 at 10:30 a.m.
- Monday, May 25, 2020 at 2:00 p.m.
- Tuesday, May 26, 2020 at 5:30 p.m.
- Wednesday, May 27, 2020 at 8:00 a.m.
- Thursday, May 28, 2020 at 8:00 p.m.
- Saturday, May 30, 2020 at 2:00 p.m.

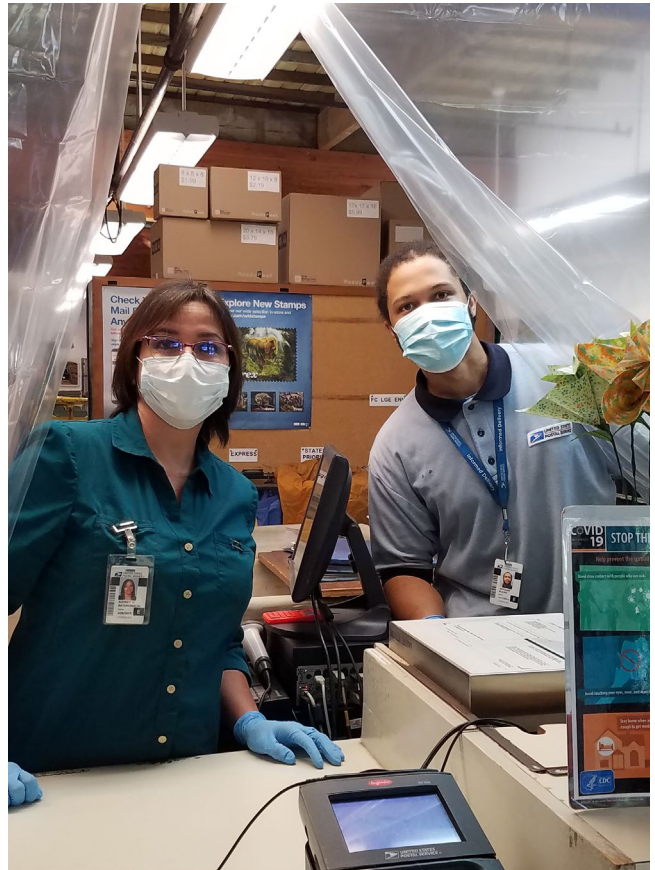
People can participate by clicking this link during the meeting times:

www.StormWaterUtilityOahu.org

Storm water utilities provide municipalities with dedicated funding available exclusively for storm water management purposes. There are more than 2,000 of these utilities across the nation. A storm water utility will allow the DFM to address storm water quality issues, minimize pollution from construction sites, provide regular stream clearing, support ways to replenish the aquifer, and address local nuisance flooding through green infrastructure projects, among other issues.

For more information, see

www.StormWaterUtilityOahu.org



Mahalo Audrey Batongbacal and Jahquan Moore for serving us at the Haleiwa Post Office!



CITY AND COUNTY OF HONOLULU

STORM WATER UTILITY VIRTUAL MEETINGS *this May*

Help shape the future and funding of storm water management on O'ahu

Participate in an online meeting!

May					
Mon.	Tues.	Wed.	Thur.	Fri.	Sat.
		20 5:30 pm	21 2:00 pm	22 10:00 am	23 10:30 am
25 2:00 pm	26 5:30 pm	27 8:00 am	28 8:00 pm		30 2:00 pm

Share input and suggestions for the storm water utility study

For more information on the study and meetings:

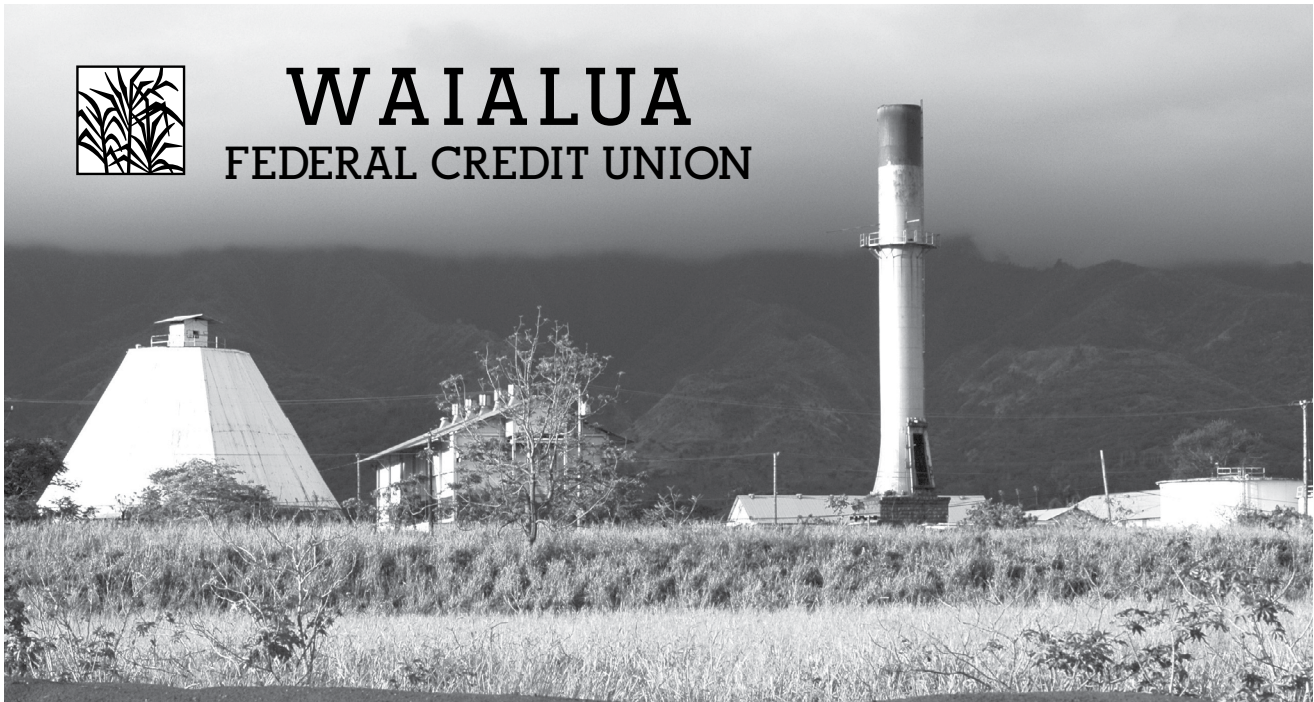
StormWaterUtilityOahu.org

Paid for by the taxpayers of the City and County of Honolulu





WAIALUA FEDERAL CREDIT UNION



Serving the North Shore Community

www.waiialuafcu.com
(808) 637-5980

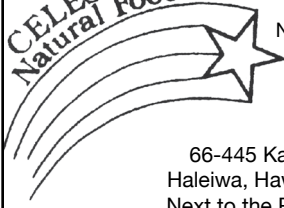
- SAVINGS
- CHECKING
- LOANS



Mahalo to North Shore girl Meghin Chapelle and staff at US Renal Care in Wahiawa

BULLETIN BOARD

CELESTIAL
Natural Foods



Featuring the largest selection of certified organic produce on the North Shore. No panic...ours is organic. Open 7 days. Mon.-Sat. 9am-7pm. Sun. 9am-5pm

66-445 Kam. Hwy
Haleiwa, Hawaii 96712
Next to the Post Office
808-637-6729 • 808-637-1922 fax

LTC

Laie Trucking Company, LTD

* Ready Mix Concrete * Recycled Aggregates
* Pump Service * Hauling * Equipment Rental

PH: (808) 293-8710 PH: (808) 293-1296
P.O Box 121 FAX: (808) 293-2890
Hau'ula, HI 96717 laietrucking@hawaiiintel.net

"A LOCAL COMPANY, BUILDING A LOCAL COMMUNITY"

N-C PLUMBING & SUPPLY

Cont. Lic. No. C-8913



- RESIDENTIAL & COMMERCIAL SALES & SERVICE
- CONTRACTING & DESIGN • HOME PLUMBING SERVICE
- PLUMBING FIXTURES, HEATERS • FREE ESTIMATES

Nestor P. Calilao (Owner)	Bus:	637-8662
P.O. Box 769	Res:	638-5157
Waiialua, HI 96791	Cellular:	372-8718

Saccoccio & Lopez

ATTORNEYS AT LAW

TRIAL LAWYERS

Serving Hawaii since 1984

637-7611

Personal Injury -Property damage
Criminal Law - Traffic Crimes
Landlord Tenant - Bankruptcy



NEW Wahiawa Clinic Hours
Thursday - Saturday
8:30 a.m. to 4:30 p.m.
(808) 754-1519

KQNS 107.3 FM

Christian Radio

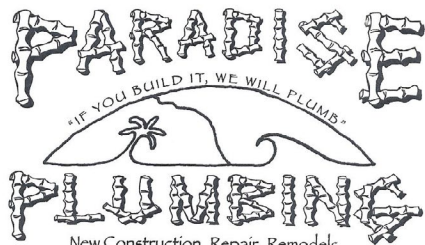
Inspirational, Health,
Music, Addictions, Marriage,
Prophecy, Stories, etc.

Munden Design & Build

Lic.#BC19632

Design • Plans • Permits • Construction
Additions & New Residences
808 391-8616

Providing quality work since 1978



New Construction, Repair, Remodels

Dale Christensen C-29856 (808) 368-1473



372-1820

Greekz Plumbing

Greekz Plumbing

License# C-32939
Phone 372-1820



KATHI LEE ALBIAR
OWNER/BROKER - RB 17327

808-358-4139
KATHI@ALBIARREALTY.COM
WWW.ALBIARREALTY.COM

SALES & PROPERTY MANAGEMENT SINCE 1993



CLASSIFIEDS

The North Shore News is published every other Wednesday and mailed free of charge to all North Shore homes and businesses.

PRESS RELEASE POLICY: Submit press releases, mail or email to Editor, North Shore News, P.O. Box 117, Haleiwa, HI 96712. Please type your releases and keep them shorter than 200 words unless they are of an unusual news interest. Releases should be viable news stories and are published on a **space available basis only**, with priority given to those received in our office first. You may attach photos. We are not responsible for the return of any photos. All materials are submitted at owner's risk. We reserve the right to edit and/or refuse all submissions including advertising.

EDITORIAL POLICY: We welcome articles and letters from our readers. Letters to the Editor are published on a space available basis only and preference is given to shortness of length, and quality of content. We prefer to run not more than one letter, per person, per 6 month period. Letters subject to edit.

Views expressed by our contributing writers and advertisers do not necessarily reflect the view of the management and staff of the North Shore News. All rights reserved. Reproduction in whole or part without permission is prohibited. © 2020.

Editor & Classifieds

Linda Seyler

Typography

Downtown General Store

Contributing Writers

Tom Jacobs

Betty Depolito

State Representative Lauren Matsumoto

Senator Gil Riviere

Councilmember Heidi Tsuneyoshi

Photography

Banzai Productions



@nsnews_haleiwa

@nsfoodbank



Please recycle this newspaper.

SERVICES

SHORE ELECTRICAL SERVICE

New Const-Remodels
638-0049/Lic#C20777

Computer Problems?

I can fix any MAC or PC.
Chris 371-3089

Andres Plumbing

All your plumbing needs
808-256-7337 Lic#C24500

DRAIN CLEAN SERVICES

256-7337 Lic#24500

North Shore Pet Nanny

Experienced Pet Sitting,
Walking, Drop In Visits
Call Kathryn
808-489-3645
Reasonable Rates

ESTRADA'S WE HAUL 'EM

Garbage-Rubbish-Trash
Call Rick 808-216-9419

Aloha Window Cleaning

Gutter Clean Outs
Pressure Cleanings
Window Cleanings
Call us today at
808-638-1630

Rajanee Thai Cuisine

at Haleiwa Store Lots
Open Everyday 12:30-8p
Call In and Walk Up
(808) 784-0223

ANGELS PLUMBING

Repairs
Remodeling
Renovation
638-7878
Lic. #C12004



Paumalu Electric Inc.

C 18074

Residential & Commercial
New Installation & Repairs
Renovations. Remodels
Electric Meter Replacements

Dave Hancock 638-9054

Sacred Journey Healing Therapies

Face and Body Sculpting Studio
Face Sculpting & Lifting and Sculptice
Body Sculpting Studio
Ice-Therapy and Maderoterapia
Call or Text 808 954-1032
66-216 Farrington, Waialua
Instagram:sacred_journey_healing

ALOHA COMPUTER

PC/MAC Repair/Virus
Removal
MOBILE COMPUTER
REPAIR SERVICE
372-2667

CS EuroCars Kapolei Mercedes Repair Shop

with low labor rates
ASE Certified Technician
27 years experience
2116 Lauwiliwili St. Unit 104F
Kapolei, HI 96707 - Under New mgmt.
808-682-1957

BUSINESS SERVICES CENTER

Fast & Convenient Copy, Fax, Scan,
Computer/Internet, Laminate, & More



Across from
the Haleiwa
Post Office

637-4558 • gonorthshore.org
#gonorthshore

GERMAN CAR SERVICE

Professional-Qualified
Technician
Call Gary
637-6800

HOT YOGA NORTH SHORE

*BUILD STRENGTH,
FLEXIBILITY & BALANCE*
BEGINNERS TO ADVANCED

637-5700

HARVEY'S TOWING LLC

24 hr Towing Service
Lockouts, Jumpstarts &
Recovery. Specializing in
opening locked car doors.
Call anytime 478-0333

WHY KNOTT FLORIST

Waialua Shopping Center
637-9380

Hawaii Tree Co.

Trimming & Removal
Professional-Reliable
Free Estimates
462-2749

DOG/CAT NAIL TRIMMING

At your home- only \$20.
Call 808-388-5336

CONSTRUCTION SERVICES

Windows, Kitchen
Single Wall Remodel
808-260-7386

Rainbow International Restoration

Water/Fire/Smoke damage
Expert Cleaning
808-466-0660

HOW TO CONTACT THE NORTH SHORE NEWS

Letters to the Editor, and other items submitted for publication consideration may be sent to us via:

MAIL: P.O. Box 117, Hale'iwa, HI 96712

E-MAIL: NSNHaleiwa@gmail.com

NSN4Linda@gmail.com

PHONE: (808) 780-8037

www.northshorenews.com

CLASSIFIED ADS

Next Issue - May 20, 2020
Deadline Date - May 8, 2020

**NOAA Stranded,
Entangled
Injured Sea Turtles**
(808) 725-5730

OFF da ISLAND
Are you leaving Oahu on vacation or business? Do you live on a neighbor island, the mainland or foreign country and subscribe to the North Shore News? Send us a photo of someone in front of a sign or landmark holding a copy of the NSN. Email your photo along with the person or persons' name, community of residence, telephone number and photo location to: NSNHaleiwa@

Classified Ad Rates
3 lines (min.) \$18.89
4 lines \$25.13
5 lines \$32.45
1" Box Ad \$41.88
(27 characters in each line)
Include your contact information.
*Ads can be mailed, or emailed.
Pay by check payable to: North Shore News or credit card by phone order.
We reserve the right to refuse any advertisement with a full refund.
North Shore News • P.O. Box 117,
Haleiwa, HI 96712
(808) 780-8037 • NSNHaleiwa@gmail.com

FREE ADS
Garage & Yard Sales,
Reunions, Lost & Found.
Email ad to:
NSNHaleiwa@gmail.com



Marianne Abrigo, Properties
Specializing in -
North Shore
Real Estate
Ask for our list of available properties and/or a free market analysis.
Marianne M. Abrigo
"Realtor since 1974"
Office 637-3511
Fax 637-0777
Email mabrigo222@aol.com

HELP WANTED

Professional Pet Groomer
Poodles A Must
Part-Time in Pupukea
Competitive compensation based on experience, references required.
Call Moani 638-7073

North Shore Chamber of Commerce is looking for volunteers to help with our Visitor Center sales and services. 3 hour shifts, Monday through Friday are available. Come be part of our team, helping the North Shore be a better place to live, work, and play!

**MATSUMOTO SHAVE
ICE**
Now Hiring!
Apply in person daily
9am-4pm
808-637-4827

Housekeeper Wanted
Full-Time - 40 hrs per week
Benefits Included
Own transportation required
\$18/hr, based on experience
Call (808)838-1202

FOR SALE

**LANDSCAPING
PLANTS
FOR SALE**
(808) 638-7740

**Retail Sales
Surf & Sea**
Hawaii's Ocean Sports Headquarters is always looking for hard working, energetic people to become a part of our sales team. Good pay, bonus, benefits. Japanese speaking a plus. Ocean sports experience and dive instructor wanted. Please contact surfnsea@surfnsea.com for details.
Apply in person daily 9am-7pm
62-595 Kam. Hwy., Haleiwa

FOR RENT

TABLES & CHAIRS
Call North Shore News
780-8037
All proceeds go to the North Shore Food Bank

Large furnished 1 BR/1 BATH house w/large lanai Private/Electric Gated estate Washer/Dryer Full kitchen Available NOW
Call (808)838-1202

Fully furnished Studio Private/Electric Gated estate Laundry Room in building Full kitchen Available NOW
Call (808)838-1202

MISCELLANEOUS

**POTHOLES
ALERT & REPORT**
State Owned Roads (e.g., Kam Hwy) 536-7852
City Owned Roads (e.g., KeNui/Pupukea Rd) 768-7777

**May is National
Pet Month**
Founded in 2009 with a no-kill philosophy the Oahu SPCA's mission is to make certain that "every healthy, treatable animal will find a forever home."
It is kitten season!
The Oahu SPCA recently rescued dozen of homeless kittens and we need your help.
Oahu SPCA-Wahiawa
(808)754-1519

**Now is a Great Time
to Quit Smoking!**
Call the Hawaii Tobacco Quitline or enroll in their Online Coaching Program
1-800-QUIT-NOW
hawaiiqutline.org

Would you like to get the North Shore News via email in color! Just send us a message at: NSNHaleiwa@gmail.com and you get the NSN online every two weeks!

FREE Wooden Pallets
Good Condition
See Bernie at the Waiialua Community Association
office 9am-2pm
637-4606

Parkinson's Group Meeting
Group meets at the Waiialua United Church of Christ on the 1st Saturday of every month.
Friends & Family Welcome
Next meeting TBA @10am
northshoreparkinsons@gmail.com

QUESTIONS?
ONEOAHU.ORG
COVIDRESPONSE@
HONOLULU.GOV
768-CITY

**Attention Home-School
& Private School
Graduates**
Our next edition, we will honor the graduating students. Let us know if you would like to recognize a home school or private school graduate.
Email info to:
NSNHaleiwa@gmail.com
Deadline is Friday, May 8

Hawaii Votes by Mail
The 2020 elections will be conducted by mail. All registered voters will receive a ballot in the mail. To verify your registration status contact the Office of Elections at (808) 453-VOTE (8683) or visit olvr.hawaii.gov or visit elections.hawaii.gov

North Shore Food Bank
@ nsfoodbank

Mahalo Nui Loa to our Caring Community!



The team at Kahuku Medical Center is humbled by the support of our community and so grateful for the much-needed PPE recently donated by the public!

A big thank you also to Dr. Miscovich, Premier Medical Group, and all the dedicated volunteers that helped to bring free COVID-19 drive-thru testing to both the PCC and our KMC campus in April.

Please know the wellbeing of this amazing community is always our top priority, and KMC is offering the following services to provide added convenience and safety for our patients in these challenging times:

TeleMedicine from the KMC Clinic - Stay safe while staying connected to your provider. Call (808) 293-6236 to schedule a TeleMedicine appointment, and we'll bring the KMC Clinic to you.

Curbside Check-In at KMC - When you need to come to KMC, check in to your appointments from the comfort and safety of your car. Simply park and call (808) 293-9221, and we will greet you.



Kahuku
MEDICAL CENTER

*Friends and Family Taking
Care of Friends and Family*

www.kmc-hi.org | 808-293-9221