



“E Ala Na Moku Kai Liloloa”

In This Issue:

10th Annual Celebrating the Arts
Pages 12-13

Give your Valentine a Gift of Love
Page 15

The Haleiwa Project: A New Beginning for Homeless Youth
Page 16



*Celebrating the Arts
Featured Artist Jack Soren*

NORTH SHORE NEWS February 12, 2020 VOLUME 37, NUMBER 3



Committee for Equity in Women's Surfing (CEWS) Story/Photo: CM Heidi Tsuneyoshi

Equality for Female Surfers on the North Shore

Councilmember Heidi Tsuneyoshi has been working with the Committee for Equity in Women's Surfing (CEWS) and its supporters to find ways to promote equality for female surfers in competitions on the North Shore and, eventually, throughout Oahu. In 2017,

CEWS had successfully pushed for the Titans of Mavericks surf contest to include a women's division. Through collaboration between CEWS, its supporters and Councilmember Tsuneyoshi, Resolution 20-12, which urges the City and State to adopt new rules to ensure

gender equity in surf contests on the North Shore, was adopted by the City Council on January 29th. By passing this resolution the City Council has taken the position that our local governments need to take steps toward ensuring that women have the same chances as men to make a career out of their passion for surfing. Councilmember Tsuneyoshi will continue to work with CEWS, its supporters and anyone else who advocates for this important issue.

PERMIT NO. 1479 HONOLULU, HI PAID U.S. POSTAGE ECRWSS PRSRT STD	RESIDENTIAL CUSTOMER *****ECRWSSDDM*****
--	--

File your taxes & apply for an Easy Advance*

\$500 UP TO \$6,250



In 24 hours or less.

GET \$50 CASH** NOW

WITH PAID TAX PREPARATION

**With paid tax preparation provided by Liberty Tax. Valid at participating locations. Cannot be combined with other offers or used toward past services. One coupon per customer and per return. Other exclusions may apply. Void where prohibited by law. Valid 1/2/2020-2/28/2020.



866-871-1040 LibertyTax.com



66-560 Kamehameha Hwy
By Killer Taco
Haleiwa, HI 96712
(808) 637-2222

94-210 Pupukahi St Ste 101
Near Central Pacific Bank
Waipahu, HI 96797
(808) 671-8222

85-880 Farrington Hwy, Ste B
Next to Golden House
Waianae, HI 96792
(808) 696-0222



*An Easy Advance is a loan secured by and paid back with your tax refund and is offered by Republic Bank & Trust Company, member FDIC, to eligible taxpayers. Loan amount options are based on your expected Federal refund less authorized fees. If approved for an Easy Advance, a Finance Charge may apply depending on your loan amount. Loan is subject to underwriting and approval. Easy Advance proceeds are typically available within 24 hours of IRS acceptance of tax return or within 24 hours for those filing before the IRS start date however, if direct deposit is selected it may take additional time for your financial institution to post the funds to your account. Visit your Liberty Tax office to learn about the cost, timing and availability of all filing and product options. Valid at participating locations. Valid Jan. 2-Feb. 28, 2020.

North Shore Neighborhood Board Meeting

Tuesday, February 25, 2020

7pm - Waialua Elementary School

Sign up for minutes or agenda of meetings at:

<https://www.honolulu.gov/esub/email-subscribe-nco>

or call Kathleen at 637-8545

for more information

or any questions.

The Hale'iwa Family Dental Center, Ltd.



- Adults and children
- Most cases completed in 4-12 months
- Clear braces available
- Lower cost
- University tested
- Used for over 20 years

Produced by Todd R. Okazaki and Staff

"Straighten those crooked teeth that have bothered you for years"

Conveniently located behind First Hawaiian Bank in Historic Hale'iwa Town
Call 637-9652 for your reservation



Featuring the largest selection of certified organic products on the North Shore.

10% OFF

YOUR NEXT PURCHASE
EXPIRES APRIL 30, 2020
LIMIT 1 PER CUSTOMER - MUST PRESENT COUPON

Monday - Saturday - 9A - 7P
Sunday - 9A - 5P

66-445 Kam. Hwy - Haleiwa, HI 96712 - Next to the Post Office - (808) 637 - 6729



Valentine's Day

DINNER

AT THE PROUD PEACOCK

• FRIDAY FEBRUARY 14 • 5:00 PM •

\$95 / PERSON
\$175 / COUPLE

WITH WINE PAIRING
\$125 / PERSON
\$205 / COUPLE

ALL PRICES INCLUDE TAX/EXCLUDE GRATUITY



Reservations:
WAIMEAVALLEY.NET





Paddle Happy!

Join our Ohana and
Fall in love with Paddling
with HALEIWA OUTRIGGER CANOE CLUB

Come Ocean with US
no better workout or place to be
EMAIL HALEIWAOUTRIGGER@GMAIL.COM
FOR MORE INFORMATION

all ages and stress levels are welcome :)

Ocean is the Cure



Why Knott Florist Your Rose Connection!

*We got you! All kinds of flowers, roses, and arrangements.
We have beautiful gift baskets, unique gifts and an assortment
of lei. Call us at 637-9380 or stop by our shop in the
Waialua Shopping Center.
Free delivery in Waialua with Pre-orders.*

Happy Valentine's Day!

*Your Community Florist
Open late February 13 & 14 until 6:00pm*



**Councilmember
Heidi
Tsuneyoshi**
Serving You in District 2

Aloha, as many of you know recently the U.S. Department of Defense Missile Defense Agency (MDA) had proposed a radar to be constructed in either Kahuku or Kaena Point to track long-term ballistic missiles. While I encourage and support any strengthening of our island's defenses, I am greatly opposed to the locations being considered. Residents of Kahuku have expressed their concern with the possibility of being inundated with yet another large development in their small, rural community. Kaena Point is one of the most sacred areas on Oahu, and many historians had said that the land there should never be disturbed. I was pleased to learn of the MDA's consideration of alternate sites, by removing one of the Kahuku sites, and adding the Pacific Missile Range facility on Kauai, but until I receive guarantees that the radar will not be built in Kahuku or Kaena Point, I will continue to stand with the respective communities in opposition to this project.

I am happy to report the passage of two resolutions that were introduced to address concerns with watersports on the North Shore. First, the City Council unanimously adopted Resolution 20-11, urging the Dept. of Parks and Recreation to move forward with the construction of a canoe halau on Haleiwa Beach Park Mauka. There are no public canoe halaus along the north and windward coast from Kailua to Makaha which is disappointing considering the North Shore and Haleiwa are the go to locations for water sports events. This has been a project supported by the community for many years and I'll be working to see this project through to construction.

Finally, I have had the pleasure of working with an amazing group of women who advocate for gender equity in surfing, an issue that continues to persist despite its fast growing popularity with women young and old. The Committee for Equity in Women's Surfing (CEWS) and I have been working to see how we can increase inclusion of women in competitions. For this, I introduced and the City Council unanimously adopted resolution 20-12 which urges the State and City to implement new rules to ensure gender equity for all surf contests on the North Shore. I was happy to see so many women from the surfing community tell us about their experiences and advocate for more equality in a sport they all love.

Thank you for your continued support and you ever want to contact me please call my office at 768-5002 or email me at htsuneyoshi@honolulu.gov. Mahalo!



**Waialua Community Association
ANNUAL MEMBERSHIP MEETING**

February 19, 2020

At the WCA GYM

Sign-In at 6:00 PM

Meeting at 7:00 PM

For questions call : 637-4606

In order to vote in this meeting, your application must be received no later than January 31, 2020. Membership applications are available at the WCA Office.

SMOOTHIES - BOWLS - SALADS - LOCAL GIFTS - TOASTS - SANDWICHES - WAFFLES

RAISED BY THE WAVES

PLANT-BASED + VEGAN CAFE

KAHUKU SUGAR MILL
WED - SUN 8AM - 3PM



RAISEDBYTHEWAVES.COM

@RAISEDBYTHEWAVESHAWAII

Serving Aloha Since 1970

Paalaa Kai

www.pkbsweets.com



**Open
Daily**

**Local Fresh
Goodies
&
Sweets**

*Snow Puffies
Sada's Malassadas*



**Read about our local
bakery on YELP! We
have over 750 reviews!**

MARCH 22, 2020
 Hale'iwa Beach Park 630am Sunday

3rd ANNUAL
8K 15K
 1-Mile FUN Walk

Registration Includes:
 Bib # with Timing Chip and Finisher Medal
 Beautiful Scenery, Hydration Stations
 Finisher Snacks & treats
 Tons of FUN and lots of ALOHA!

1st, 2nd, 3rd Place WINNERS
 In age categories, for each timed race. (8K/15K)

A Fundraising Initiative for Loko Ea Fishpond. All the proceeds
 earned will benefit the restoration efforts and educational programs.
 We are a 501(c)(3) non-profit organization.

SIGN-UP @ FLPREGISTER.COM/456
LOKOEA.ORG
 REGISTER IN-PERSON: Call 637-3232



@lokoeaun



Global Creations last day of business Photo: NSN

Aloha Global Creations

Long time North Shore retail icon, Global Creations, closed its doors on January 31st. "It has been an absolute honor, privilege and joy to promote local artists for more than 31 years on the North Shore," said owner Helen Zeldes who started her well-known business at the Aloha Stadium Flea Market at the age of 22. Helen was known for bringing in exotic handcrafts from then relatively unknown places like Guatemala and Bali. "I run in to adults who tell me they got their high school (Guatemalan) backpacks at Global Creations" and "now they bring their kids in to Global." When she opened her first brick and mortar store in Haleiwa in 1990, local artists found her a welcoming audience. Being an avid environmentalist and believing in "shop local" before it was a thing, Global Creations quickly became a "go to" local art gallery. "We love to support new and up and coming artists," said Global Creation's art curator, Shannon McPherson. Global is known for launching some of Haleiwa's biggest art stars like Clark Little and promoting Heather Brown when she was just starting out. "I loved buying from and supporting the hundreds of talented local handcrafters I had the opportunity to support over my 17 years at Global," said Global's longtime employee, Johnette Wicker. "We treated our artists and each other like family" Colette Harris, the back office backbone of the business said "and everyone felt that aloha when they walked in the door." Helen says she is looking for a new home on the North Shore for her beloved gallery but until then, thank you Global Creations for 31 years of good memories. You will be missed.

Please visit us in Waialua

Paalaa Kai 
www.pkbsweets.com "Da Best"

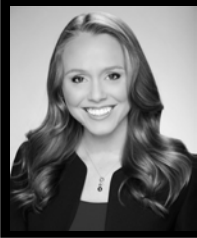
We love to hear your feedback!
Show us your YELP review on your
mobile and get **20% OFF**
YOUR PURCHASE

Learn more
about our
local bakery
through the
over 750 Yelp
Reviews already
written online!

This offer is
valid between
Feb 11 - 25, 2020.
Cannot be
combine with
other promotions,
daBest VIP card,
or discounts.



Malassada
Sada-San



**Representative
Lauren
Matsumoto**
Serving You in District 45

Aloha friends and neighbors!


Mahalo to everyone who came to the Waialua Town Hall! It's great to see so many people engaged with the legislative process. Your feedback, thoughts, and engagement go a long way to inform the way the Legislature makes its decisions. And now that the 2020 Legislative Session is moving quickly, it can often be difficult to track the issues and legislation you care about. Be sure to monitor hearing notices, utilize measure tracking, and learn how the system works at capitol.hawaii.gov.

Recently, there has been a lot of talk in the news and in private circles about the 2019-nCov "Novel Coronavirus", or better known as Coronavirus. To address this major issue, the legislature held an information briefing on Monday, February 3rd. Experts from the Hawaii Department of Health, the Healthcare Association of Hawaii, the Hawaii Healthcare Emergency Management Coalition, and others testified about Coronavirus.

The testifiers explained the extra measures they're taking to ensure the State is ready if a case is discovered in the islands. The state is stocking supplies, ordering test kits, and training firefighters and other personnel to assist with testing at the airport. The State is also stockpiling emergency supplies, masks, and protective equipment. In addition to procuring extra supplies, the State and federal government are examining all ports of entry, including the airport and harbors, to monitor visitors for signs of illness.

As of February 3rd, there are no cases of Coronavirus in Hawaii. Nevertheless, it's a good time to revisit the Department of Health's recommendations to fight the spread of disease and infection. Coronavirus transmits between people the same as a cold or flu. Make sure to cover coughs and sneezes, wash your hands before and after making close personal contact, and avoid touching your face throughout the day. Coronavirus symptoms include a fever, cough, difficulty breathing, and other flu-like symptoms. Additional DOH recommendations include avoiding travel to China. They also do not recommend wearing a face mask, as they would be ineffective against Coronavirus and may instead stimulate the growth of other viruses or bacteria. Get your flu shot, practice the Department of Health's advice, and call your doctor if you're ever in doubt.


For further information and to receive updates about the state of Coronavirus in Hawaii, please visit health.hawaii.gov/docd/advisories/novel-coronavirus-2019.



'IKE NA'AUAO SERIES

KĀHILI PA'A LIMA CLASS

- Date: Feb. 15, 2020
- Location: Waialua Community Association Center
- Time: 10a-1p
- Kit Price: \$20 (pays for materials)
- 15 spots available
- Make Reservation with [gmaxwellmukala@gmail.com/](mailto:gmaxwellmukala@gmail.com) 808.393.3776



Happy Valentine's Day

From

*North Shore Ashiatsu and
Massage*

*Enjoy \$10 off Gift Certificates
on sale until February 14th
\$20 off packages of 3 massages
Couples massage available by
appointment*

*Abby Parker, LMT, MAT #6037
Petrita Lubin, LMT, MAT #16180*

*66-935 Kaukonahua Road, Waialua
808-778-7809*

Panic Attacks

Thomas Robertson, LCSW
Ko'olauloa Community Health Center

While mental health problems are quite common, many people come in for the first time feeling apprehensive because they have never talked about their mental health with someone before. One reason is that they are embarrassed of their symptoms. This is particularly true of panic attacks. Panic attacks are a type of mental health disorder where symptoms occur suddenly, and often for no apparent reason. Someone experiencing a panic attack may have physical symptoms such as racing heartbeat, sweating, shaking, feeling dizzy, nauseated, numbness in their limbs, or having a headache. Other symptoms could include an impending sense of doom or danger, a feeling that they are going to lose control of themselves, or even the feeling that they are going to die. Because of the intensity of the symptoms, it is not unusual for some to seek care at an emergency room, undergo a lot of diagnostic tests, then told that they had a panic attack. This can be disheartening for many.

Panic attacks can also have a bit of a feedback

effect where people begin to feel very stressed about the possibility of having another panic attack in the future and avoid social situations. This can affect their ability to be productive at work and at school and generally decrease their quality of life. It is important that people understand that if they suffer from recurring panic attacks, it is a good idea to see a medical provider to discuss the symptoms, evaluate the problem and see if there are underlying issues that need to be addressed. Management of these attacks may include medications and counselling. It is imperative that management includes seeing a mental health provider to further evaluate the problem and provide other modalities to cope with these panic attacks. Understanding the problem goes a long way in dealing with the resulting stress of having these attacks.

Ko'olauloa Health Center
293-9231

*We accept everyone regardless of ability to pay.
Improving the quality of life for all. Imua!*

New Provider at Koolauloa Health Center

Haunani Louis, a Family Nurse Practitioner, is Koolauloa Health Center's new medical provider. She was born and raised in Pahala on the island of Hawaii. She is a graduate of Kamehameha School. She completed her Bachelor's degree in Nursing from Hawaii Pacific University and her Master's from University of Southern California in 2019. Her experience includes working as a nurse in Labor & Delivery at Queen's for seven years then to the emergency department for the last six years.

She is currently working at the Red Raider Health Center at Kahuku High & Intermediate and at the Kahuku clinic. She will not only see children and adults at the school but will be involved in health education in the classroom involving chronic diseases, such as diabetes, and other health issues. In the near future, she hopes to resume delivering outreach services to the homeless at Hauula Park.

Haunani resides in Mililani with her 14 year old son, significant other and two dogs. When she is not busy delivering medical services, she is at the beach surfing or working out. Welcome to Koolauloa, Haunani!

2020 KIA'I LOKO AFTER SCHOOL PROGRAM

WHO?

Dedicated Kia'i Loko
4th-6th Graders

WHEN?

Wednesdays
session 1: JAN 22-FEB 26, 2020
session 2: MAR 25-APR 29, 2020
-students can enroll in multiple sessions-
@ 2:30 PM-5:00 PM

WHERE?

Loko Ea Fishpond
62-450 Kamehameha Hwy.
Haleiwa, 96712

Registration is limited to
15 participants

For more information visit:
www.loko.org

For questions or to signup email:
joelyn@loko.org

Program Fee: \$20 per session
To help to partially cover program costs
-financial aid available upon request-



ULUHĀHĀLOA

TO GROW STRONG AND THRIVE

JOIN US FOR THIS EXCITING NEW PROGRAM!
HANDS-ON ACTIVITIES WILL FOCUS ON:



- Native plant propagation and outplanting
- I'a ID and Fishing Practices
- Kuapā Building
- Mākāhā Building and Management
- Puo'ama Recruitment and Care

I'a—fish or any marine animal * Kuapā—wall of a fish pond
Mākāhā—Sluice gate, us of a fish pond * Puo'ama—small fry sized striped mullet



Mahalo to our Funders!



This Project is funded through support of NOAA Fisheries, Pacific Islands Region



North Shore Chamber of Commerce News

Member Highlight: STONEFISH Restaurant

Dustin Pokrass, owner of STORMY'S GASTRO-PUB, debuted his new restaurant, STONEFISH, with partner Gary Jacobus last fall and they're thrilled with the menu they've created. Dustin and Gary's vision is to give diners a unique and flavorful experience here in Haleiwa town.

STONEFISH specializes in steak, seafood and handmade pastas, with a non-traditional Italian flair. Gary says, "Some of the items on the menu, I had never seen before," such as the Squid Ink Pasta, which comes with hearty scallops over handmade squid ink-infused pasta. The Parmesan Crusted Ahi Sandwich is a favorite, along with the Prime Rib Poke and the Ribeye Oscar. They also serve a wide selection of local brews and handcrafted cocktails.

Dustin and Gary spent months converting the space into one that is elegant and comfortable. "We are a casual fine dining place. We've created a laid-back environment with an elevated menu. Diners can watch a big game or have a business meeting on the lanai. We host company parties, military going-away parties, and wedding receptions here," says Dustin.

Half of their seating is outdoors, and they've made plans to do more improvements on the 1,700 square foot lanai. Gary says, "Here we have lanai dining right off the Haleiwa boardwalk. The outside tables are the first to fill up. I love hanging out here... it's just a fun, comfortable atmosphere."

STONEFISH Restaurant, 66-145 Kamehameha Highway, Haleiwa, takes reservations at 808-200-7266. Happy Hour is 3-5pm, Monday through Sunday, with half-off pupus. Dinner menu starts at 5pm.




Co-owner Gary holds the Tuscan Salmon over handmade fet-tucini, and server, Taylor, has the Ribeye Oscar, a 12-ounce ribeye steak and sautéed shrimp, under a tarragon béarnaise sauce.

North Shore Chamber of Commerce General Membership Meeting

Wednesday, February 26, 2020
8am at Haleiwa Joe's

Continental Breakfast will be served
\$10 members, \$15 non-members
All are welcome to join us!



NORTH SHORE CHAMBER OF COMMERCE
VOLUNTEERS
WANTED

GET INVOLVED • STAY CONNECTED • SUPPORT YOUR COMMUNITY

NAME: _____	I'M INTERESTED IN VOLUNTEERING FOR: <small>(PLEASE CHECK ANY/ALL THAT APPLY)</small>
DAYTIME PHONE: _____	<input type="checkbox"/> VISITOR CENTER
EVENING PHONE: _____	<input type="checkbox"/> ADMINISTRATIVE HELP
EMAIL: _____	<input type="checkbox"/> PUBLIC RELATIONS
DAYS/TIMES AVAILABLE: _____	<input type="checkbox"/> WEB SITE
HOURS PER WEEK AVAILABLE: _____	<input type="checkbox"/> HISTORICAL TOUR GUIDE
	<input type="checkbox"/> MEMBERSHIP MEETINGS
	<input type="checkbox"/> BUSINESS EXPO
	<input type="checkbox"/> CHRISTMAS PARADE
	<input type="checkbox"/> CHRISTMAS PARTY
	<input type="checkbox"/> OTHER: _____

TO VOLUNTEER, COMPLETE AND RETURN THIS FORM TO THE
NORTH SHORE CHAMBER OF COMMERCE • 66-434B KAMEHAMEHA HWY. • HALEIWA, HI 96712
OR CONTACT US AT 808-637-4558 (PHONE) • INFO@GONORTHSHORE.ORG (EMAIL)

GONORTHSHORE.ORG

Florals + Events + Weddings



LULU'S LEI + BOUQUETS

YOUR NORTH SHORE
FLOWER SHOP

\$5 Off Your Next
Flower Bouquet

Orders over \$150 receive complimentary
delivery from February 12-14.
Offer valid until 2/14/20



North Shore Market Place
66-250 D102 Kamehameha Hwy
Haleiwa, HI 96712

(808) 366 - 4290



www.lulusleiandbouquets.com

[@lulusleiandbouquets](https://www.instagram.com/lulusleiandbouquets)

FRIENDS OF SUNSET BEACH Celebrates 10 Years of Keeping The Arts Alive for The North Shore Youth.

Live music and art auction featuring, Jack Soren. City Boys and Makua Rothman to perform.

Friends of Sunset Beach (FOSB), a nonprofit organization dedicated to providing art and music education to the North Shore community's youth, announced their tenth annual fundraiser, Celebrating the Arts, will be held on Saturday, February 22, 2020 from 5:30 – 10 p.m. at Waimea Valley Pikake Pavilion.

Celebrating the Arts is one of the North Shore's most magical and anticipated evenings. Live performances by City Boys, Makua Rothman, Tiara Hernandez and other special guests will round out a night of silent and live auctions with art from some of Hawaii's most accomplished professionals. The live auction will be headlined by Laie artist, Jack Soren. Jack's highly coveted work is inspired by iconic styles of Hawaiian surfing and surf history.

Each year, sales from this event raise money to provide the supplies and salaries for two dedicated art instructors to teach at Sunset Beach Elementary —art education is not in the public school's budget. This 2019-2020 school year, FOSB has been able to fund full-time art instruction, as well as supplies, for the K-6 students at Sunset Beach Elementary. FOSB also provides support to the music program through a joint effort with the PTCA. Art teachers Lilly Barel

and Steven Kean and music teacher Tiara Hernandez are now teaching daily. In the past ten years, FOSB has continued to meet their commitment to serve 450 Sunset Beach Elementary students annually, in addition to 700 more children throughout the year, hosting popup art tents at community events like the Menehune Surf Contest where children can take part in painting, crafts and other forms of artistic expression for free.

"Although art is generally the first course to go in budget cuts, it is often recognized as one of the most important aspects of a child's development and is proven to increase attendance, graduation rates, and test scores," explains FOSB Vice President, Suzannah Kennedy. "Our long-term goal is to have enough funds to support art education at other North Shore schools".

General admission tickets are \$65 each, however if guests purchase online by February 21, early bird tickets are only \$55. Heavy pupus by Ke Nui Kitchen included in ticket price. To purchase tickets or a table, go to:

<http://www.friendsofsunsetbeach.org/fundraiser/>
To contact FOSB please email friendsofsunsetbeach@gmail.com



North Shore keiki creating gyotaku tee shirts at the Friends of Sunset Beach art tent at the 2019 Menehune Surfing Contest
Photo: Kiele Muraco



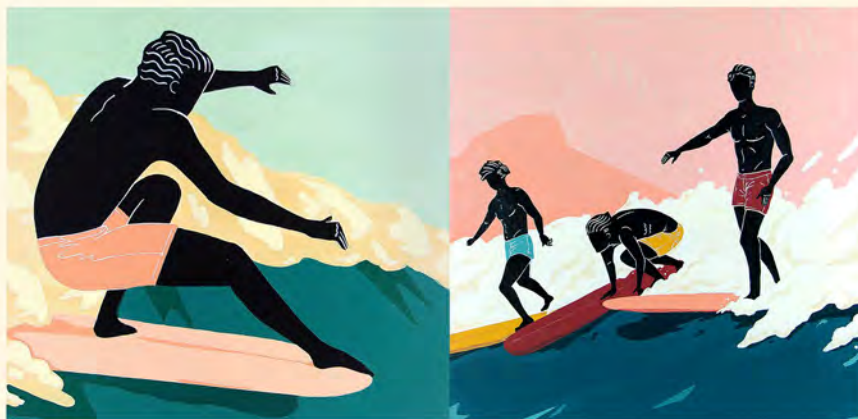
Landon McNamara playing for students in Ms. Tiara's music class at Sunset Beach Elementary
Photo: Kiele Muraco

FRIENDS OF SUNSET BEACH
NORTH SHORE O A H U

10th Annual CELEBRATING
THE ARTS



Saturday, February 22, 2020
Waimea Valley Pikake Pavilion
5:30pm - 10:00pm



Featured artist: **JACK SOREN**

Special Musical Guests
Live & Silent Auctions

Ticket Price is \$55/\$65 (at the door)
Includes heavy pupus - Adults only

Go to friendsofsunsetbeach.org to purchase



Your Keiki's Summer Journey

2020 SUMMER PROGRAMS

Explorations Ho'omāka'ika'i

One-week summer boarding program providing foundational Hawaiian values and practices through hands-on activities.

Apply by February 15, 2020.

Grade and application requirements vary by program.

Summer School

Summer courses available at each of our 3 campus locations:

- **KS Hawai'i:** Hālau Kupukupu & Hālau Maui Ola
- **KS Kapālama:** Hālau Kūkalaulama
- **KS Maui:** Hālau 'o Kapikohānaiāmālama

Apply by February 15, 2020.

Program details vary by campus.

Kilohana

Innovative, four- and five-week Hawaiian culture-based math and literacy programs.

Apply by March 15, 2020.

Grade and application requirements vary by program.



Kamehameha Schools

Kamehameha Schools policy is to give preference to applicants of Hawaiian ancestry to the extent permitted by law.

FOR MORE INFORMATION: Web: ksbe.edu/summer • Phone: 808-842-8800



Dear Editor,

While we, the tenants and users of Kawaihapai Airport, known locally as Dillingham Airfield, designated as PHDH, have to date not received any sort of official notice, there are confirmed rumors that the State of Hawaii's Department of Transportation, Airports Division is considering not renewing its day-time lease from the United States Army.

As you can imagine, this is creating confusion and anxiety amongst the many users of the airport. There are presently two sky-diving operations, three commercial glider operations, two commercial powered-hang-glider operators, two fuel concessions and a number of privately owned aircraft who depend on Dillingham Airfield for their livelihood and/or flight training. There are a number of full and part time State of Hawaii employees, one Federal Wildlife Control Specialist and a staff of security guards employed at the airfield.

The above-mentioned commercial operators employ about 100 individuals, develop about two million

dollars in taxable revenue and bring a steady flow of tourists to the North Shore of Oahu. Even temporary airport closures compromise profits. Loss of the airfield would be catastrophic for the sky-diving and glider operations as there is absolutely no realistic option for these types of flight operations.

Flight training opportunities, be they in gliders, powered aircraft, rotorcraft or under canopy are not restricted to the airport tenants. The very long (9000') runway provides an ideal tool for flight training by flight-schools based on all islands.

It is unclear, at this point, if this rumor has the merit of fact or is just wishful thinking on the part of state airport administrators, who may find themselves overwhelmed by responsibility. It is also unclear if the State of Hawaii can walk away from contractual obligations with the United States Army. Nor is it clear if the Federal Aviation Administration will or even can allow permanent closure of a designated "reliever airport".

If the potential loss of our airport is of concern to you, it would help if you made some calls to find out which politicians and bureaucrats are going to take responsibility for this issue.

A hui hou,
Captain Rick Rogers

Give your Special Valentine a Gift of Love

Please visit these special dogs at the Oahu SPCA
823 Olive Avenue, Wahiawa (808) 754-1519 oahuspca.org



My name is Malia. I am a 6 year old lab mix who absolutely loves people. I love when they scratch behind my ears as I lean into your hand to get more scratches. I love running zoomies when in the play yard with you. I have been stung by a bee and boy did it hurt. I am still angry at that bee so I go to the play yard and bark at the spot on the ground that the bee came from and hope that I

scare it away each day. I get along with humans and not so much with other critters so I would need to be the only pet in the household. I would rather not be left alone for long periods of time as I can get super sad and lonely. If left in a yard all by myself, I am so strong (and smart) that I can find a way out. I need an adopter that is willing to work with me on obedience training. I am so smart but I know with a dedicated adopter (and a lot of positive reinforcement and treats) I can be a great addition to your family.



Miloh is a 3-and-a-half-year-old pit-mix. He is a smart boy who loves to learn new tricks. He knows how to sit, shake, lay down- and is very willing to learn more! He is a sweet boy who welcomes any human to come play. He is not a fan of other dogs though, so he would have to be the only dog in the household.

*Oahu SPCA does abide by military housing policies.



My name is Sampson. I am a 5-year-old Shar Pei mix with lots to say to my new human friends. I love my humans, playing in water, and enjoying my toys. I get along with people, but I am not a fan of dogs, cats or other furry critters. I can't wait to have a home of my own so I can spend my time napping, playing, and being my goofy self in peace. I love my human friends so much that I do get anxious when I am left alone, so my perfect family will be able to spend lots of time with me.



Meet MooMoo! She is a 1-year old Pitbull who would love to go for walks with you. She is a sweet girl who gets along with most people. She can be selective about her dog-friends but when she makes a friend her excitement is undeniable. Come meet MooMoo at the shelter. She is waiting for you!



*Oahu SPCA does abide by military housing policies.

The Haleiwa Project: A New Beginning for Homeless Youth

On January 28, 2020, ALEA Bridge Executive Director Nicole Winter shared her latest update on the new Haleiwa Project at the monthly North Shore Neighborhood Board held at Waiialua Elementary School Cafeteria. Wanting to do things right and be good neighbors, especially with the nearby Haleiwa Elementary School, ALEA Bridge (AB) distributed over 150 flyers to notify local residents of a meet-n-greet to be held later that week.

The Haleiwa Project represents a working collaboration between Alternative Structures International (ASI) aka Kahumana, Residential Youth Services and Empowerment (RYSE), and ALEA Bridge. Back in August 2019, the City & County of Honolulu competitively solicited to lease city property at Kewalo and Haleiwa. In December 2019, ALEA Bridge received a ten-year master lease of city property at Kauhale Haleiwa – 66-528 Haleiwa Road. Local community members familiar with the area know this as the former site of COYSA aka Central Oahu Youth Services Association, Incorporated, a 24-hour emergency shelter for teens.

AB with partners ASI and RYSE hosted a soft-opening on-site on Friday, January 31, 2020 from 5:00 – 7:00 p.m. Local community members and law enforcement stopped by to learn more about the Haleiwa Project itself and trio tasked with program implementation.

The Haleiwa Project facilitates housing formerly homeless and /or at-risk youth and families with at least one child. Entering its fifth year, ALEA Bridge is familiar to North Shore community members for its outreach to homeless, at-risk homeless, veterans and youth. Executive Director Winters is not only excited but thrilled at this opportunity to work with our neighboring communities to address pressing homeless issues. We're fortunate. We couldn't find better partners to get the Haleiwa Project off the ground. We're more than blessed to work with our sister ohana in beautiful Haleiwa.

Other than AB, the brainchild for the Haleiwa Project stems from respected ASI Executive Director Tom McDonald and exuberant RYSE Executive Director Carla Houser. With over 45 years of experience, ASI aka Kahumana situated in beautiful Lualualei Valley on the sunny west side of O'ahu houses 120 families in transitional housing. Their mission is to co-create a healthy, inclusive and productive farm-based community with homeless families, people with disabilities and youth. On the other side of the island, RYSE operates a 24/7 access center as part of the Kawailoa Youth and Family Wellness Center in Kailua with residential youth live-in program and on-site support services with

professional supervision. You will be hard pressed to find a greater champion for youth than Carla Houser. She's more than just giving back. Thus, the trio brings a lot of expertise and energy to the North Shore and will run one of, if not the only, housing program for youth and families with at least one child in the Central Oahu/North Shore area. AB will keep the North Shore communities updated as the Haleiwa Project unfolds. Questions can be addressed to Nicole Winter at (808) 445-5527 or nwinter@aleabridge.org.



Executive Directors Carla Houser (RYSE), Tom McDonald (ASI/Kahumana) and Nicky Winter (ALEA Bridge)

**NORTH SHORE
PHOTOGRAPHY**

HALEIWA, HAWAII

Celebrating 40+ years of Professional Photo Services
and Historic Images to the Community.
search: northshorephotohawaii.com



Aloha 'Aina Recycling Drive- Volunteers Liam Van Asperen and Waialua High School Computer Science Club along with Kokua Hawaii Foundation.

Hawaiian Humane Society Celebrates the Passage of Bill 59

by the City & County of Honolulu

With strong support from the Hawaiian Humane Society and community members islandwide, the Honolulu City Council successfully passed Bill 59 into law—the most significant and progressive advancement of municipal animal welfare legislation the island has seen since 1995. This modernization of Oahu's animal ordinance embraces national animal welfare best practices and strengthens protections for pets across the island.

The life-saving provisions of Bill 59 benefit animals in the following ways:

- Mandates microchipping for pet cats and dogs. This will improve return-to-owner rates and help lost animals get home more quickly.

- Reduces the mandatory minimum hold time from nine days to five days for animals with identification, aligning Oahu with the national standard of three to five days. This provision gives Hawaiian Humane legal ownership of abandoned animals more quickly, thereby allowing the organization's veterinary staff to address their health and behavior needs in a timelier manner and reducing unnecessary stress on healthy, friendly animals otherwise ready to find new homes.

- Gives the Hawaiian Humane Society the authority to spay/neuter dogs brought in as stray three times in a 12-month period. This will encourage owners to keep their pets safe and eliminate the dogs' ability to contribute to pet overpopulation.

Raises the mandatory hold fee from \$2.50 to \$10 per day (after the first 24 hours) which is still lower than, but closer to, the average cost of care. The hold fee has not been raised since 1983.

The Hawaiian Humane Society is grateful to Council-member Ann Kobayashi for sponsoring the bill, the Honolulu City Council for passing this much needed update to Oahu's animal welfare laws and to all of the community members who advocated for life-saving positive change. The ordinances detailed in Bill 59 go into effect on July 1, 2020.



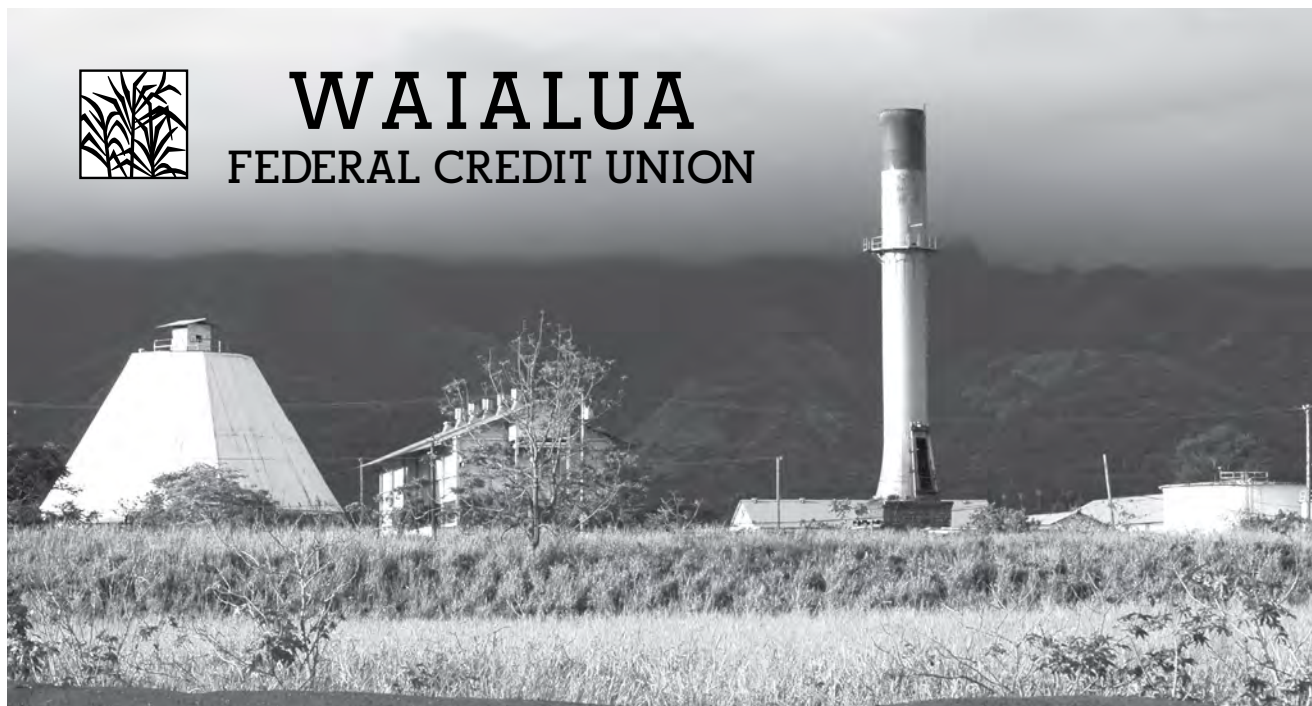
Polynesian Treasures

Hawaii's largest selection of Polynesian handicrafts and Hawaiian inspired gifts.

North Shore Marketplace * Haleiwa, Hawaii
Open daily from 10 am * (808) 637-1288



WAIALUA FEDERAL CREDIT UNION



Serving the North Shore Community

www.waiialuafcu.com

(808) 637-5980

- SAVINGS
- CHECKING
- LOANS

BULLETIN BOARD

LIC. #AC 18275



**COWPER
CONSTRUCTION**

GENERAL ENGINEERING CONTRACTOR

Full Service Sitework
Contractor
Septic Systems & Tanks
Since 1978
Michael Cowper 638-7200
cowperhawaii.com



KATHI LEE ALBIAR
OWNER/BROKER - RB 17327

808-358-4139
KATHI@ALBIARREALTY.COM
WWW.ALBIARREALTY.COM

SALES & PROPERTY MANAGEMENT SINCE 1993

vanessa li style

adonai salon
north shore, oahu
(808)953-8221

www.vanessalistyle.com
FB/IG @ vanessalistyle
vanessalistyle@gmail.com

**WAIALUA FARMER'S
CO-OP MARKET**

Saturdays 8:30am - 1:00pm
On the grounds of
Historic Waiialua Sugar Mill
Support Local Farming

"THE BULLETIN BOARD THAT IS IN EVERYONE'S HOME"

BULLETIN BOARD



Featuring the largest selection of certified organic produce on the North Shore.
 No panic...ours is organic.
 Open 7 days.
 Mon.-Sat. 9am-7pm.
 Sun. 9am-5pm

66-445 Kam. Hwy
 Haleiwa, Hawaii 96712
 Next to the Post Office
 808-637-6729 • 808-637-1922 fax

LTC

Laie Trucking Company, LTD

* Ready Mix Concrete * Recycled Aggregates
 * Pump Service * Hauling * Equipment Rental

PH: (808) 293-8710 PH: (808) 293-1296
 P.O. Box 121 FAX: (808) 293-2890
 Hau'ula, HI 96717 laietrucking@hawaiiintel.net

"A LOCAL COMPANY, BUILDING A LOCAL COMMUNITY"

N-C PLUMBING & SUPPLY

Cont. Lic. No. C-8913



- RESIDENTIAL & COMMERCIAL SALES & SERVICE
- CONTRACTING & DESIGN • HOME PLUMBING SERVICE
- PLUMBING FIXTURES, HEATERS • FREE ESTIMATES

Nestor P. Calilao (Owner) Bus: 637-8662
 P.O. Box 769 Res: 638-5157
 Waialua, HI 96791 Cellular: 372-8718

Saccoccio & Lopez

ATTORNEYS AT LAW

TRIAL LAWYERS

Serving Hawaii since 1984

637-7611

Personal Injury - Property damage
 Criminal Law - Traffic Crimes
 Landlord Tenant - Bankruptcy



Serving the North Shore for 30 years!

Rick Grover

(808) 983-9331 cell
 (808) 638-8120 office

rick@grovermasonry.com

- * Foundations * Driveways
- * Sidewalks * Retaining Walls
- * Excavation & Lot Clearing

License # C-18302

BOW WOW BUNGALOWS

Licensed Boarding Kennel
 North Shore, Oahu
 Reasonable Rates
 Ph. 637-2562

These Dogs Have Fun!

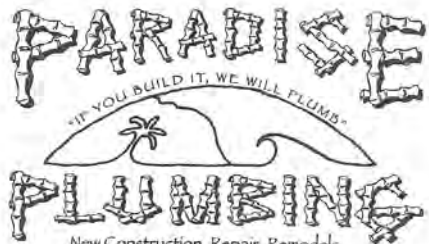
Munden Design & Build

Lic.#BC19632

Design • Plans • Permits • Construction
 Additions & New Residences

808 391-8616

Providing quality work since 1978



Dale Christensen C-29856 (808) 368-1473



Greekz Plumbing

License# C-32939
Phone 372-1820

ADAMS & COMPANY

REAL ESTATE BROKERS



Alison R. Mitchell
 REALTOR-ASSOCIATE
(808)256-0152
 RA 62065

Located in Haleiwa Town
 66-250 Kamehameha Hwy. C205
 Haleiwa, HI 96712
 NORTHSORE, OAHU

HAWAII SYMPHONIC BAND

Saturday, 21st March 2020

7:30pm

McKay Auditorium

Brigham Young University – Hawaii

Laie, HI

Admission Free

As a part of an ongoing partnership with Brigham Young University–Hawaii, the Hawaii Symphonic Band performs on campus each year as BYUH’s resident ensemble. This residency offers the Music Department at BYUH to showcase outstanding students, ensembles, and faculty members in performance or projects in collaboration with the HSB. The upcoming concert will feature a premiere of student composer Samuel D. Kuoha’s first work for wind band, *Epica di Diana*. Featured guest soloist is pianist Dr. Scott McCarrey performing the *Warsaw Concerto* by Richard Addinsell. HSB’s Music Directors are Steven Hirahara, Kent Sato, and Ernest Taniguchi.

PROGRAM

Hungarian Dance No. 1 by Johannes Brahms/transcribed by Siuai Laufou

Epica di Diana by Samuel D. “Kaleo” Kuoha. Premiere performance.

Warsaw Concerto from *Dangerous Moonlight* by Richard Addinsell/transcribed by Wily Hautvast.
Guest Pianist: Dr. Scott McCarrey

Pavane pour une Infante Defunte by Maurice Ravel/transcribed by Johann de Meij

Pictures at an Exhibition by Modest Mussorgsky/Maurice Ravel; transcribed by Paul Lavender

Conductor: Ernest Taniguchi.

House doors open at 7:00pm.

Children welcome but they must be accompanied by an adult and remain seated and quiet during performance. Infants are unfortunately not allowed.

Hawaii Symphonic Band is on Facebook.

Haleiwa Evangelical Mission International

Come and join us
Sunday's at Waialua
Elementary School Cafeteria

Sunday School at 9:00 am
Worship Services at 10:00 am

For Prayer
Call 637-4567

Blessed to be A Blessing

“Children’s Church”





Local Community Market
ORGANIC & Local Produce,
Artwork, Crafts & Food

SATURDAYS: from 8:00 am - 2:00 pm
Across from famous “Banzai Pipeline”
Surf Beach and Ehukai Beach Park at
Sunset Beach Elementary School
www.northshorecountrymarket.ngo



“Rescuing Quality Food to Feed Hawaii’s Hungry”
#wastelessfeedmore

Mahalo to our 2019 North Shore Food Donors

- Camp Mokuleia
- Foodland
- Haleiwa Joe’s
- Lei Lei’s Bar and Grill
- Marian’s Catering
- Polynesian Cultural Center
- Schofield Barracks
- Ted’s Bakery

Waiialua Public Library UPCOMING EVENTS

67-068 Kealohanui St, Waiialua, HI 96791
637-8286

Used Book Sale

Saturday, February 15, 8:30am-12:30pm
Weather Permitting

Readers' Group

Thursday, February 27, 9:30-11am
The Golem and the Jinni
by Helene Wecker

Recurring Events

- Toddler Time - Fridays, 10am
- Storytime - Saturdays, 10am
- Computer Instruction (by appointment)

Celebrate Black History Month

Read: *Frederick Douglas: Prophet of Freedom*
by David Blight, 2019 Pulitzer Prize
Watch: *Selma* starring David Oyelowo
Listen: B.B. King & Friends : 80

BOOKS, DVDs, CDs At The Library

Library Closed Saturday, February 15 - Presidents Day

North Shore News



2020 Schedule

PUBLICATION DATE EDITION DEADLINE DATE

February 26	#4	February 14
March 11	#5	February 28
March 25	#6	March 13
April 8	#7	March 27
April 22	#8	April 10
May 6	#9	April 24
May 20	#10	May 8
June 3	#11	May 22
June 17	#12	June 5
July 1	#13	June 19
July 15	#14	July 3
July 29	#15	July 17
August 12	#16	July 31
August 26	#17	August 14
September 9	#18	August 28
September 23	#19	September 11
October 7	#20	September 25
October 21	#21	October 9
November 4	#22	October 23
November 18	#23	November 6
December 2	#24	November 20
December 16	#25	December 4

Direct-Mailed to Every Home

MOKULEIA · WAIALUA · HALEIWA · KAHUKU · LAIE
Every Other Wednesday
12,000 copies

“The North Shore’s most popular publication” since 1970
(808) 780-8037 · NSNHaleiwa@gmail.com ·
NSN4Linda@gmail.com
www.northshorenews.com



North Shore Food Bank @nsfoodbank and North Shore Service Center

IHS, Alea Bridge, Catholic Charities, US Vets

Wednesday, February 19, 2020
Wednesday, March 4, 2020
Waiialua Community Association
9:00am - 1:00pm



CLASSIFIEDS

The North Shore News is published every other Wednesday and mailed free of charge to all North Shore homes and businesses. Extra copies may be obtained at our office.

PRESS RELEASE POLICY: Submit press releases in person, mail or email to Editor, North Shore News, 66-437 Kam. Hwy., Suite 210, Haleiwa, HI 96712. Please type your releases and keep them shorter than 200 words unless they are of an unusual news interest. Releases should be viable news stories and are published on a **space available basis only**, with priority given to those received in our office first. You may attach photos. We are not responsible for the return of any photos. All materials are submitted at owner's risk. We reserve the right to edit and/or refuse all submissions including advertising.

EDITORIAL POLICY: We welcome articles and letters from our readers. Letters to the Editor are published on a space available basis only and preference is given to shortness of length, and quality of content. We prefer to run not more than one letter, per person, per 6 month period. Letters subject to edit.

Views expressed by our contributing writers and advertisers do not necessarily reflect the view of the management and staff of the North Shore News. All rights reserved. Reproduction in whole or part without permission is prohibited. © 2020.

Editor & Classifieds

Linda Seyler

Typography

Downtown General Store

Contributing Writers

Tom Jacobs
Betty Depolito

State Representative Lauren Matsumoto
Senator Gil Riviere
Councilmember Heidi Tsuneyoshi

Photography

Banzai Productions

Social Media

Anuhea Seyler
@nsnews_haleiwa
@nsfoodbank



Please recycle this newspaper.

SERVICES

Computer Problems?
I can fix any MAC or PC.
Chris 371-3089

Andres Plumbing
All your plumbing needs
808-256-7337 Lic#C24500

North Shore Pet Nanny
Experienced Pet Sitting,
Walking, Drop In Visits
Call Kathryn
808-489-3645
Reasonable Rates

ALOHA COMPUTER
PC/MAC Repair/Virus
Removal
MOBILE COMPUTER
REPAIR SERVICE
372-2667

PET SITTING
North Shore
Over Nights/
Pet Walk Services
\$10 Off for New Clients
343-7146 Emilie

North Shore Mobile Detailing
•Cars.Trucks.SUVs.Boats.RVs.
Motorcycles.
•Call/Text for a free estimate
•We come to you!
(808) 635-6631

NORTH SHORE SERENITY
AL-ANON
6:30 - 7:30pm Wednesdays
St. Michael Church
Cottage in back of Church

Paumalu Electric Inc.
C 18074

Residential & Commercial
New Installation & Repairs
Renovations. Remodels
Electric Meter Replacements

Dave Hancock 638-9054

Hawaii Tree Co.
Trimming & Removal
Professional-Reliable
Free Estimates
462-2749

Sacred Journey Healing Therapies
Face and Body Sculpting Studio
Face Sculpting & Lifting and Sculptice
Body Sculpting Studio
Ice-Therapy and Maderoterapia
Call or Text 808 954-1032
66-216 Farrington, Waiialua
Instagram:sacred_journey_healing

CS EuroCars Kapolei Mercedes Repair Shop
with low labor rates
ASE Certified Technician
27 years experience
2116 Lauwiliwili St. Unit 104F
Kapolei, HI 96707 - Under New mgmt.
808-682-1957

BUSINESS SERVICES CENTER

Fast & Convenient Copy, Fax, Scan,
Computer/Internet, Laminate, & More



Across from
the Haleiwa
Post Office

637-4558 • gonorthshore.org
#gonorthshore

GERMAN CAR SERVICE
Professional-Qualified
Technician
Call Gary
637-6800

HOT YOGA NORTH SHORE

*BUILD STRENGTH,
FLEXIBILITY & BALANCE*
BEGINNERS TO ADVANCED
637-5700

HARVEY'S TOWING LLC

24 hr Towing Service
Lockouts, Jumpstarts &
Recovery. Specializing in
opening locked car doors.
Call anytime 478-0333

WHY KNOTT FLORIST
Waiialua Shopping Center
637-9380

Private Fitness Training/Yoga
I Come To You!
808-282-8995
www.evolvefitness.com/
mabelle.lee@gmail.com
Kupuna Discounts

North Shore Martial Arts
Self Defense Training
All Ages, Come Improve
Mental & Physical Strength
M & W 7-8pm WCA
Text or Call 216-4335

DOG/CAT NAIL TRIMMING

At your home- only \$20.
Call 808-388-5336

ESTRADA'S WE HAUL 'EM

Garbage-Rubbish-Trash
Call Rick 808-216-9419

HOW TO CONTACT THE NORTH SHORE NEWS

Letters to the Editor, and other items submitted for publication consideration may be sent to us via:

MAIL: 66-437 Kamehameha Hwy., Suite 210, Hale'iwa, HI 96712

E-MAIL: NSNHaleiwa@gmail.com

PHONE: (808) 780-8037

Office Hours: Monday – Friday 10 a.m.-2 p.m.

www.northshorenews.com

CLASSIFIED ADS

Next Issue - Feb. 26, 2020
Deadline Date - Feb. 14, 2020

**NOAA Stranded,
 Entangled
 Injured Sea Turtles**
 (808) 725-5730

OFF da ISLAND
 Are you leaving Oahu on vacation or business? Do you live on a neighbor island, the mainland or foreign country and subscribe to the North Shore News? Send us a photo of someone in front of a sign or landmark holding a copy of the NSN. Email your photo along with the person or persons' name, community of residence, telephone number and photo location to: NSNHaleiwa@gmail.com.

Classified Ad Rates
 3 lines (min.) \$18.89
 4 lines \$25.13
 5 lines \$32.45
 1" Box Ad \$41.88
 (27 characters in each line)
 Include your contact information.
**Ads can be dropped off in mail slot, mailed, or emailed. Pay by check payable to: North Shore News or credit card by phone order.*
 We reserve the right to refuse any advertisement with a full refund.
 North Shore News • 66-437 Kam. Hwy., Suite 210, Haleiwa, HI 96712
 (808) 780-8037 • NSNHaleiwa@gmail.com

FREE ADS
**Garage & Yard Sales,
 Reunions, Lost & Found.**
 Email ad to:
 NSNHaleiwa@gmail.com



Marianne Abrigo, Properties
 Specializing in -
 North Shore
 Real Estate
 Ask for our list of available properties and/or a free market analysis.
Marianne M. Abrigo
 "Realtor since 1974"
 Office 637-3511
 Fax 637-0777
 Email mabrigo222@aol.com

HELP WANTED

Household Help
 Beachfront Estate
 16 hours/week
 808-637-0808

Pet care professional, vet tech or grooming experience. F/T or P/T in Pupukeya.
 Salary negotiable
 638-7073

MATSUMOTO SHAVE ICE
 Now Hiring!
 Apply in person daily
 9am-4pm
 808-637-4827

 **McDonald's is Hiring at Haleiwa and Laie**
Competitive Hiring Wage (with a Raise after 60 Days) • Flexible Hours • Free Food and Uniforms • College Tuition Assistance (\$2500 annually) • Pay for Grades (both High School and College Students) • Health & Dental Insurance for Qualifying Employees • FUN Coworkers! • Free Classes to Earn a High School Diploma or GED • Incentive Pay for GREAT Customer Service • More benefits available! Stop in and See Us Today! It's EASY to apply: You can Text 36453 'apply10761' to apply at Haleiwa or 'apply33340' to apply at Laie Or go online and select the Haleiwa or Laie restaurant: <https://careers.mcdonalds.com/main/>

**Retail Sales
 Surf & Sea**
 Hawaii's Ocean Sports Headquarters is always looking for hard working, energetic people to become a part of our sales team. Good pay, bonus, benefits. Japanese speaking a plus. Ocean sports experience and dive instructor wanted. Please contact surfnsea@surfnsea.com for details.
 Apply in person daily 9am-7pm
 62-595 Kam. Hwy., Haleiwa

North Shore Food Bank
 @ nsfoodbank

North Shore Chamber of Commerce is looking for volunteers to help with our Visitor Center sales and services. 3 hour shifts, Monday through Friday are available. Come be part of our team, helping the North Shore be a better place to live, work, and play!

FOR RENT

TABLES & CHAIRS
 Call North Shore News
 780-8037
 All proceeds go to the North Shore Food Bank

FOR SALE

**LANDSCAPING
 PLANTS
 FOR SALE**
(808) 638-7740

MISCELLANEOUS

**FREE Unwanted
 Car Towing**
 291-6151

Parkinson's Group Meeting
 Group meets at the Waialua United Church of Christ on the 1st Saturday of every month. Friends & Family Welcome
 Next meeting March 7 @10am
 northshoreparkinsons@gmail.com

CAR WASH
 Saturday, February 29,
 9am-1pm
 at Waialua Community Association
 All proceeds go to the **North Shore Food Bank**
 We will also be accepting blankets and gently used adult clothes donations.
 For info call Linda 780-8037
 MAHALO

North Shore Christian Fellowship
 Ohana Produce Distribution
 Friday, Feb. 28 10am
 Waialua Community Association

Sunset Beach Food Bank
 Every Tuesday
 Sunset Beach Christian Church
 12 noon- 3pm

Would you like to get the North Shore News via email in color! Just send us a message at: NSNHaleiwa@gmail.com and you get the NSN online every two weeks!

FREE Wooden Pallets
 Good Condition
 See Bernie at the Waialua Community Association
 office 9am-2pm
 637-4606

Reynolds Recycling
 Haleiwa Town Center
 Materials accepted:
 All HI-5 beverage containers, steel, brass, stainless steel and copper (requires notarization)

Attention Oahu students in grades 6-12! Enter the Mission PAWsible Contest for a chance to win a \$150 Visa Debit gift card and other great prizes. Visit HawaiianHumane.org/ MissionPAWsible to learn more and enter today.

**POTHOLES
 ALERT & REPORT**
Hotline: 768-7777

ANIMAL CRIME STOPPERS
955-8300
 Be their voice.
 Be anonymous. Report animal cruelty.
 Loyalty works both ways. Your tip may lead to a reward of up to \$1000.
 Press *Crime on your mobile phone or visit HonoluluCrimeStoppers.org

Putting Heart into Community Care



*H*appy Valentine's Day from your friends and family at Kahuku Medical Center, where your total wellbeing and health is at the heart of all we do!

- 24 hour Emergency Services
- Private Patient Rooms
- Acute, Swing Bed
- Inpatient & Outpatient Services
- Imaging, including diagnostic imaging, CT scanning, echocardiograms, screening mammography and ultrasound
- Laboratory
- Rehab, including physical therapy, occupational therapy and speech therapy
- Inpatient Pharmacy
- Primary Care Clinic, including internal medicine, family medicine, geriatric care and pediatrics



Kahuku
MEDICAL CENTER

Friends and Family Taking Care of Friends and Family

www.kmc-hi.org | 808-293-9221