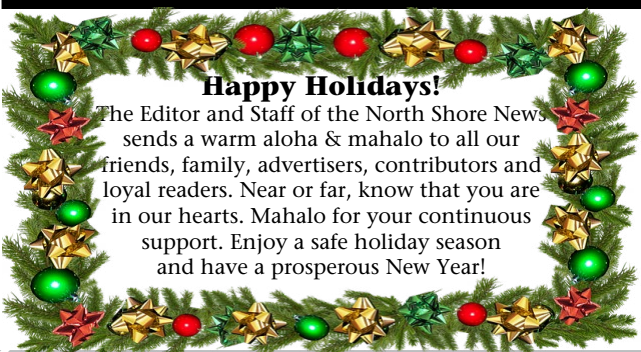




“E Ala Na Moku Kai Liloloa”



Happy Holidays!

The Editor and Staff of the North Shore News sends a warm aloha & mahalo to all our friends, family, advertisers, contributors and loyal readers. Near or far, know that you are in our hearts. Mahalo for your continuous support. Enjoy a safe holiday season and have a prosperous New Year!



NORTH SHORE NEWS December 18, 2019 VOLUME 36, NUMBER 24



KHF Pule. Photo: Tahmei Roy

Kokua Hawai‘i Foundation Announces New Home

Kokua Hawai‘i Foundation (KHF) hosted a community blessing and announced plans for their new property in the heart of Hale‘iwa town which includes seven-acres of agricultural land and two historic commercial buildings. The foundation’s vision for the new site is to establish agricultural, educational, and retail activities that benefit the community while promoting local food, waste reduction and environ-

mental stewardship.

On Friday, December 6th, over 200 community members came together at the site of the future KHF learning farm to share in the blessing of the land and new project. As part of the ceremony Kokua Hawai‘i Foundation staff invited keiki to help plant an ‘ulu tree as a symbol of the group’s collective intentions for growth and abundance. Following the blessing led by

Frank Palakiko Yagodich, neighbors and partners joined together at the KHF Community Outreach Pop-up, at the site of the former Hale‘iwa Flower Shop, for locally sourced pupu prepared by local ‘AINA Chef partners Ed Kenney (TOWN), Kathy Maddox (Mohala Farms), Willie Barrera (‘Iwa Eats), Lamont Brown (Maya’s Tapas & Wine), and Marsha Taylor (Waialua High School’s Culinary Arts Program). Ron Artis II and KHF board members Kawika Kahiapo and Jack Johnson played music. Students from the Waialua High & Intermediate School Eco Club lent a hand to help with event parking and waste reduction.

PRSRT STD ECRWSS U.S. POSTAGE PAID HONOLULU, HI PERMIT NO. 1479	*****ECRWSS***** RESIDENTIAL CUSTOMER
--	--

Continued on page 2

Continued from page 1

Kim Johnson, KHF Co-Founder and President shared, "There are certain moments in life that reaffirm that you are on the right path. This was one of those moments. We are so grateful for everyone who has made the journey with us and we are excited for what is to come." Jack Johnson continues, "We are excited to be putting our energy into this magical piece of land. We can't wait to get our hands in the soil with the community to make it even more special."

Founded in 2003 by Kim and Jack Johnson, Kokua Hawai'i Foundation is a 501(c)3 that supports environmental education in Hawaii's schools and communities. KHF provides students and educators unique interactions and opportunities through field trips, educational programs, and hands-on discovery to be lifelong stewards of the earth.

Be on the lookout for KHF outreach pop-ups at the old Hale'iwa Flower Shop and first Saturday of the month community workdays starting in January. For more information, please visit: kokuahawaiiifoundation.org

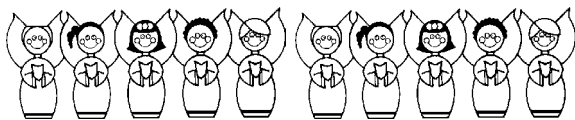

SAVE THE DATE

Sunset Beach Community Association Meeting
Wednesday, January 15, 2020 7pm-9pm
Sunset Beach Recreation Center

**Christmas Cantata
"Everlasting Light"**

December 20 - 21 at 7:30pm

Liliuokalani Protestant Church

Mele Kalikimaka
a Hau'oli Makahiki Hou!
Merry Christmas and a Happy New Year

From the
Waialua Community Association

MELE KALIKIMAKA ME KA
HAU`OLI MAKAHIKI HOU!

Around this time of year many begin to reflect upon their health. Whether it's getting your annual physical, weight loss, tobacco cessation, or overall wellness – we can help! At Ko`olauloa Health Center no one is ever turned away due to an inability to pay or lack of insurance.



KO'OLAULOA HEALTH CENTER
Be Well, Stay Well.

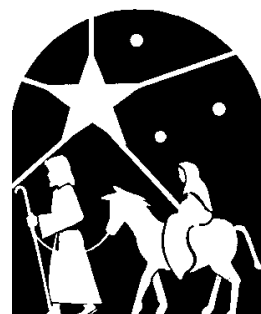
808.293.9231

www.koolauloachc.org info@koolauloachc.org

Conveniently located in Hau`ula, Kahuku, and on the Red Raider Campus

IMPROVING THE QUALITY OF LIFE FOR ALL. ʻIMʻUA!

*Smile
God Loves You!*



"For God so loved the world he gave his only begotten son that whosoever would believe in Him would never perish but have everlasting life." John 3:16

*Dr. Todd R. Okazaki
Hale'iwa Family Dental*



Kama'aina Keiki & Lā 'Ohana Family Days

Wednesdays (Keiki) & 3rd Sunday Every Month ('Ohana)

FREE kama'aina and military keiki admission every Wednesday; **50% OFF** kama'aina and military admission third Sunday every month!



Hale'iwa Farmers' Market

Every Thursday 2 – 6pm

Award-winning market featuring fresh produce, local vendors, arts and crafts, and live music



HOLIDAY SPECIAL

20% Off Individual & Family Annual Passes

On Sale Now Through December 25

- ~~\$50~~ **\$40** Individual
- ~~\$100~~ **\$80** Family (2 adults and up to 6 keiki under age 18)



HOLIDAY SPECIAL

\$5 Day Passes (or 5 for \$20)

On Sale Now Through December 25

Stuff your stockings with the gift of Waimea Valley! Visit our Ku'ono Waiwai gift shop or call 638-5884 to purchase!



ON THE NORTH SHORE ACROSS FROM WAIMEA BAY

OPEN 7 DAYS A WEEK, 9AM - 5PM

@WAIMEAVALLEY  

CALL: (808) 638-7766

@WAIMEAVALLEYOAHU 

WHERE HAWAII COMES ALIVE

WAIMEAVALLEY.NET



On this holiday season, our thoughts turn gratefully to those who have made our progress possible. It is in this spirit that we say... Thank you and best wishes for the holidays and Happy New Year!

¡Feliz Año Nuevo!



The entire Cholo's staff would like to thank you for your continued support and we wish you a happy, healthy and prosperous New Year!



www.CHOLOSMEXICAN.com




The Soap Cellar Haleiwa

Has all your Holiday shopping needs!
Next to the Black Pearl Source

Bring this ad to receive a 10% discount on all your purchases!

www.thesoapcellar.com


M
E R
R Y C
H R I S
T M A S
T O * O N E

A N D
A L L

Dr. Clarence Y. Murata
Dr. Ken Nagahiro
OPTOMETRISTS
 66-210A Kam. Hwy., Haleiwa • 637-5048



*From the Tsuneyoshi Ohana:
 Merry Christmas and Happy Holidays
 from our family to yours
 We wish you all the best in 2020!*



Virginia Abshier, MD
 Internal Medicine
*"Merry Christmas &
 Happy New Year!"*
 Monday - Saturday by appointment
 637.SICK (7425)

"Now Accepting New Patients"

Ali'i Beach Medical Group
 66-214 Haleiwa Road Haleiwa, Hawaii 96712
 office hours by appointment after hours emergency number 524.2575



*Checking it once,
 checking it twice...
 All of your favorite holiday
 sweets in one spot at*

PAALAA KAI BAKERY
*Your LOCAL Bakery
 Since 1970*

- Snow Puffy**
- Butter Roll**
- Ensamadas**
- Havana Squares**
- Muffins**
- Lemon Nut Tarts**
- Bread Pudding**
- Brownies**
- Choco-Covered Croissants**
- Cinnamon & Sesame Pretzel**







www.pkbsweets.com

OPERATION: TOY BOX & CHRISTMAS EVE MORNING BREAKFAST

LET'S STIR UP THE CHRISTMAS SPIRIT

This year we will be celebrating Operation: Toy Box & Christmas Eve morning breakfast on Tuesday, December 24, 2019 at Hale'iwa Beach Park. A big MAHALO to those of you who have supported our Operation: Toy Box event for the past 28 years. A delicious breakfast meal is served to all our guests and Santa will give out gifts to our keiki and teens. New unwrapped toys and monetary donations are welcomed. Your support is greatly appreciated.

Checks can be made out to:

*North Shore News,

66-437 Kam Hwy #210, Haleiwa, HI 96712

*Once A Month Church, P.O. Box 117, Haleiwa, HI 96712

For more information please call Linda (NSN) 808-780-8037

Toy drop off locations:

*Surfin Mermaid Tavern (across from Long's)

*North Shore Chamber of Commerce (M-F, 10-430)

*Waiialua Court House (Tues-Sun, 11-4)

*Waimea Valley

*North Shore News

*North Shore Sporting Goods (Waiialua Shopping Center)

Sponsored by North Shore News & Once A Month Church





**Senator
Gil Riviere**
**Serving Oahu's North and
Windward Shores**

Oahu Country News TV Show

Have you seen Oahu Country News, my monthly cable TV program? Each month, or nearly every month, we invite folks into the studio to have a conversation about the good work they are performing around our district with their organizations and businesses. Senate District 23 stretches from Kaneohe to Kahuku to Kaena and Kunia Camp, so there are plenty of great people and projects to highlight.

Oahu Country News with Senator Gil Riviere is broadcast on Olelo Channel 49 on the first Sunday of each month at 9 p.m. and on Tuesday mornings at 8 a.m. It is also available on-demand on our website, SenatorRiviere.com, under the News and Media tab. Here is a list and brief description of programs over the last year.

Episode 41 – Kevin Kelly shares his vision and efforts with the North Shore Economic Vitality Partnership to help small farms prosper while meeting new regulatory challenges.

E40 – Learn about sharks with Dr. Carl Meyer, a renowned expert with the Hawaii Institute of Marine Biology at Moku O Loe (Coconut Island).

E39 – Girl Scouts of Hawaii have busy building a new STEM Center and revitalizing their camp up in Pupukea. Sherry Chang describes new opportunities for Girl Scouts.

E38 – Kalona Brand Company is a new agricultural partnership created to produce value-added, niche crops like cacao and bread fruit on the North Shore. Kawika Burgess is the new director.

E37 – Kahuku High School students competed in the national finals of We the People in Washington DC. Meet Nate Strain, Jane Bradshaw, Kayla Swiderski and Taylor Magalei.

E36 – The North Shore Field School brings UH students and community volunteers together in ethnographic studies to document, preserve and honor the people of Waialua.

E35 – Outgoing director, Doug Cole, and new director Adam Borello update us on the various projects and accomplishments of the North Shore Community Land Trust.

E34 – The Kahuku Public Library is both a public library and school library. Learn about this uncommon collaboration with the two librarians, Cecile Oshima and Tamara King.

E33 – Janell Yamamoto and Daniel Carroll discuss Go Farm Hawaii, the innovative series of practical programs that educate prospective farmers on

business planning and best practices.

E32 – Dr. Kawika Winter is the director at the Heeia Estuarine Research Reserve, the newest of 27 national reserves established to protect and enhance vital watersheds, mauka to makai.

E31 – Kahuku Medical Center continues to upgrade facilities, medical expertise and services. Alan MacPhee, CEO of the hospital, shares his vision for even more upgrades to come.

E30 – Frankie Koethe explains how Oahu Resource Conservation & Development helps farmers with watershed restoration, technical assistance, erosion control and more.

Best wishes to you and your loved ones this Christmas and Holiday Season!

Please do not hesitate to call or write if you have any opinions, questions or solutions that might help me better represent you. My phone number is 586-7330 and email address is SenRiviere@capitol.hawaii.gov. Follow us on FaceBook or online at SenatorRiviere.com. Please visit us in Room 202 at the Capitol; or let's talk closer to home, maybe the next time we pass in the street. Mahalo.



Nobody bakes better bread products than PKB!

Sweet bread, french bread, football bread, or sesame bread. Try them all and prove us right!

Over the next 2 weeks, all bread selections will be offered at a savings of 15% OFF! NOTICE: Bring us a sample of any other bread better than ours and (if shown to be better) we'll give you an additional 25% discount on the bread you last purchased from us.

This offer cannot be combined with other promotions, offers, or daBest VIP card discount. Offer valid from December 18 - 31, 2019.



**Representative
Lauren
Matsumoto**
Serving You in District 45

Aloha Friends and Neighbors!

Before we dive into some of my 2020 Legislative Issue Survey results, I want to announce some exciting news from the Matsumoto Family.

My husband and I are expecting our second child to be born on Christmas Day! We're very excited for our family to be growing and my son is looking forward to having a little sister. We treasure your thoughts and prayers for a healthy birth and a quick recovery!

I have a wonderful office staff that is ready to assist you with anything in the case you need something when I am unavailable. Please don't hesitate to reach out to them just as you normally would with any community concerns, questions about legislation, or other ways we can be of assistance. I'm eager for a quick return to the Legislature!

I want to extend a warm mahalo to my constituents for submitting responses to my 2020 Legislative Issues Survey. Your input and responses are an important part of shaping my bill package and helping me to properly represent your concerns and interests during session.

Here are some highlights from this year's 2020 Legislative Issues Survey:

A third of the survey responses were from Waialua.

For our biggest statewide issue, 32% said homelessness, 28% said cost of living, and 12% said education. Other issues like agriculture, disaster preparedness, or crime were equally ranked.

When asked what infrastructure improvements were most needed, 63% said road repair, followed by 13% who said schools. Other infrastructure like state highways, sidewalks, or bike paths were equally ranked.

Ideas for community improvements or bill ideas were most commonly centered around education, health & safety, and cost of living issues.

Once again, thank you to everyone who participated in the survey!

And as we move into the 2020 Legislative Session, take the time to brush up on your legislative knowledge by visiting the Capitol website at capitol.hawaii.gov or the Public Access Room at <http://lrh-hawaii.org/par/>. Both are great resources to understand the legislative process all the way from just an idea to being signed into law. There are also great resources to learn how to write and submit testimony, follow bills throughout the session, and more.

And as always, please don't hesitate to contact

my office if you have any questions or concerns about happenings in our community. You can reach me at (808) 586-9490 or at repmatsumoto@capitol.hawaii.gov.

Royal Hawaiian Band
Sunday, Jan. 5, 2020
4 p.m.
Waialua Bandstand
*Bring your mats and lawn chairs
 and enjoy the show!*
www.waialuabandstand.com

**The First Baptist Church
 of Haleiwa**
 66-415 Haleiwa Road



Christmas Eve Service
5:30pm
 Come join us. All are welcome



HOLIDAY SPECIALS

20% Off Individual & Family Annual Passes
\$5 Day Passes (or 5 for \$20)

On Sale Now Through December 25

Stuff your stockings with the gift of Waimea Valley!
 Visit our Ku'ono Waiwai gift shop or call 638-5884 to purchase



f **t** @WAIMEAVALLEY
@WAIMEAVALLEYOAHU
 WAIMEAVALLEY.NET

WHERE HAWAII COMES ALIVE

SOLED

BEACHFRONT | SUNSET SHORES | MONTHLY FURNISHED RENTAL

68.121 Au Street #505
Waialua, HI. 96791



MOKULANI
Properties, inc RB.19068

67.292 Goodale Avenue #106

MAILING: P.O. Box 1237, Waialua, HI 96791
p. 808.637.8899 f. 808.637.5888
www.MOKULANIproperties.com



BIG WAVE SHRIMP

Featured on Food Networks Diners, Drive-Ins & Dives

**Garlic Shrimp, Steak, Ribs,
Hot Dogs & More**

66-521 Kamehameha Hwy, Haleiwa
(808) 366-2016 bigwaveshrimp.com

Happy Holidays!

EVERYONE WELCOME



HALEIWA JODO MISSION - BUDDHIST TEMPLE

66-279A Haleiwa Road
(808) 637-4382

Facebook: Haleiwa Jodo Mission - Buddhist Temple

2020: Buddhism for Everyone

January

Sunday, January 5

10 a.m. - Monthly Service with Guest Speaker
Rev. Wajira Wansa

Sunday School (with kids' activities)

Please call for date & time

January 12

8:00 a.m. - Kokua Day (Church Cleanup Day)

January 19 & 26

8:00 a.m. - Sutra Chanting (meditation practice)

**** NEW ****

Evening Meditation

January 7, 14, 21, 28

7:00 p.m. - 8:00 p.m. - Pure Land Meditation



North Shore Chamber of Commerce News

Tour Kahuku Farms and eat "FRESH" at The Farm Cafe

Kahuku Farms began with the partnership of the Matsuda and Fukuyama families, both migrated from Japan over a hundred years ago to farm on the north shore of Oahu. These former generations planted iron wood trees in long straight lines to act like hedges that protect crops from the extreme salty ocean wind. Any time you visit the farm and see these trees, you can be reminded that it is because of the commitment and support from the former generations, the younger generations can continue to successfully grow food found on local supermarket shelves today.

Papaya, Japanese long eggplant, apple banana, and taro are the four main crops grown commercially for the local wholesale market. These crops are under constant pressure from not only the salty wind but many other things like insects, fungus and fast-growing weeds. To maintain a good relationship with the wholesale buyers, you need to provide them with quality, quantity, and consistency. They want perfect looking and excellent tasting product, and they want it available every week of the year. Meeting the demand of these wholesale buyers can be challenging and costly.

The next generation has championed the task of running and developing Kahuku Farms as a North Shore destination and a place of gathering for the community. It's Farm Fresh Café, Wagon Rides and Educational Programs are a testament to fulfilling their legacy of farming and family for future generations.

"Farm-grown, handmade and authentically local, are what we're committed to, here at Kahuku Farms," says Judah Lum, husband of Kylie Matsuda. Liliko'i, açai, and chocolate are just three of the many special flavors you will taste at The Farm Café. The garden surrounding the café is designed as a destination for guests to explore and discover all the country has to offer.

Currently, Kahuku Farms is the only farm growing, processing and serving a locally grown Hawaiian acai bowl. Single origin, farm grown chocolate is also available at The Farm Cafe. Lilikoi Butter Mochi is made fresh every morning and the Farm Pizza and Side Salad Combo is a must for anyone wanting something healthy and tasty.

For more information on the tours, visit www.kahukufarms.com. And follow us on Instagram at Kahuku Farms.



Tractor tour vehicle at Kahuku Farms.



A family on the tour poses with the dark chocolate fruit.



Celebrating 25 yrs.

**Local Community Market
ORGANIC & Local Produce,
Artwork, Crafts & Food**

SATURDAYS: from 8:00 am - 2:00 pm
Across from famous "Banzai Pipeline"
Surf Beach and Ehukai Beach Park at
Sunset Beach Elementary School
www.northshorecountrymarket.ngo

12 Days of Christmas
31st Year!

NORTH SHORE HAWAII
Surf-N-Sea
SINCE 1965

Here's how to win. Pick up a **free sticker** at Surf N Sea. Stick it on your car, bike, skateboard, surfboard, etc. From December 13-December 24th, our elves will be cruising the island looking for our sticker. If they spot you, **YOU WIN!** It's that simple. Stop by the shop for more details. Mele Kalikimaka!

www.surfnsea.com 1-800-899-SURF On the Beach Since 1965

www.surfnsea.com

1-800-899-SURF

On the Beach Since 1965



North Shore Chamber of Commerce Christmas Party



The North Shore Chamber of Commerce celebrated it's Kama'aina of the Year, Antya Miller at Waimea Valley on December 11th.







Honolua Blomfield. Photo: WSL



Mele Kalikimaka

From

North Shore Ashiatsu and
Massage

We wish you and your family
Peace, Happiness, and Joy!

Abby Parker, LMT
Tenisha Ruidas, LMT
Priscilla Paris, Apprentice
Melody Gifford, LMT

66-935 Kaukonahua Road, Waialua
808-778-7809

A RARE OPPORTUNITY for investors and business owners in a fast growing Waialua/Haleiwa community.

A "B-1" commercial zoned, fee simple land of 19,124 sq ft with a free standing building of 2,126 sq ft, 3 electric meters, parking, 1.5 bath, former CrossFit Gym.

High visibility on main Farrington Hwy located between Waialua High School & Waialua Gas Station.

Two street frontage of Farrington & Goodale. A must see.

If interested please text
808-476-9900.



BANZAI NORTH SHORE WIRELESS

BLOMFIELD SWITCH STANCES, HANGS TEN, HANGS FIVE FOR A TWO

Honolua Blomfield wins her second world title! Taiwan hosted the surfers and a typhoon came through and turned the event into a crazy good display of nose riding in critical 4-6 foot surf. The event had to move to a left point break protected from the wind but it was a radical situation for the surfers. Honolua was able to make every heat and in the final hold on to a couple long nose rides to out stretch her opponent, Alice Lemoigne from France! Alice took out Chloe Calmon who was in the run to be World Champ. It was not to be. "It seemed like all the odds were against me, I made a comeback and everything just fell into place", said Honolua after the final. Congratulations to the two time World Longboard Champion !!

EDDIE BIG WAVE INVITATIONAL ON TAP UNTIL FEBRUARY 28TH

It's on and after a lot of talk about will it happen or will it not happen after the sponsorship dropped

out a while back. But we have to have the Eddie, it's a remembrance of one of Hawaii's greatest hero's. Edward Makuahanai Aikau was born on May 4, 1946. He was the first lifeguard at Waimea Bay and preformed over 500 rescues long before the PWC's were a tool for lifeguards. Aikau was notorious for settling disputes and for his great aloha spirit. In 1976 he sailed off as a member of the crew of the Hokule'a. The Polynesian Voyaging Society uses traditional ways of navigating and Eddie was keen to be crew. When the double hauled sailing canoe sailed off to make a log journey it capsized in the Molokai Channel. The crew hung on to the overturned vessel while Eddie paddle off to get help. He was never seen again while the rest of the crew was rescued the next day. This is a story our community must know. The event represents the bravado and spirit of one of Hawaii's most loved heros. This year the event made more history by inviting 4 of the best big wave women surfers to join the guys in their pursuit of that aloha spirit! For more info check their website! <https://www.theeddieaikau.com/>



The Eddie Aikau Big Wave Invitational Opening Ceremony. Photo: banzaibetty.com



Pipe, John John Florence. WSL/cestari



Pipe, Kelly Slater. WSL/sloane

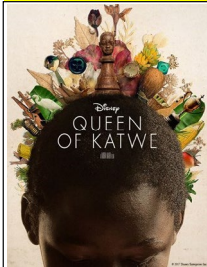


RED READER FOR LIFE

56-490 Kam. Hwy. #293-8935 M, W, Th: 9 - 5 pm; Tues: 12 - 8 pm; Fri: 9 - 3 pm
Hawai'i State Public Library System www.librarieshawaii.org

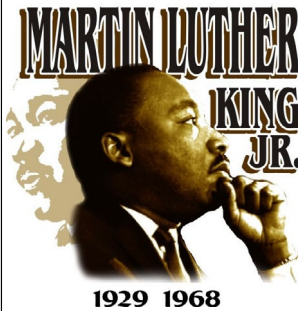
JANUARY 2020

Major Program Sponsor: Friends of the Library Kahuku



Disney Pictures
QUEEN OF KATWE
PG

Tuesday, January 7
at 5:30 pm



In honor of
Dr. Martin Luther King, Jr.'s birthday,
we'll display photos
and speeches from
his visits to the
Hawaii Legislature
in 1959 and UH

Sew a Bowl Cozy for Microwave
In the Kahuku Cool Lab
Tuesday,
January 14
at 4:30 pm



Sewing Machine Experience Needed
ONLINE RSVP REQUIRED



Tax-Aide™

STARTING IN FEBRUARY

Selma

PG-13

Showing in Kahuku Cool Lab
Tuesday, January 21
at 5:30 pm

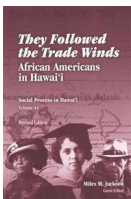


**KEIKI
MUSIC**

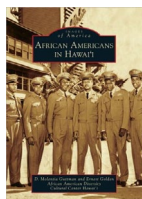
Monday,
January 6 & 27
at 10:00 am



**BLACK HISTORY SERIES
KICK-OFF**



Tuesday,
January 28
at 5:30 pm



Please join us for music, special
guests, and for little known African
American history in Ko'olauloa.

Kahuku Library will host a series of
events focusing on Black History in
Hawaii throughout February.



Wednesdays
2:00 - 4:00 pm



w/ Michelle Henderson
at 10:00 am
January 17, 24, & 31

LIBRARY CLOSED

Wednesday, Jan. 1, 2020

New Year's Day

Monday, Jan. 20

Dr. Martin Luther King, Jr. Day



To receive the Kahuku Library monthly program
flyers, email: KCL@librarieshawaii.org

WAIALUA FEDERAL CREDIT UNION

HOME EQUITY LOAN

3.75% APR*

CALL US (808) 637-5980 OR VISIT US WWW.WAIALUAFCU.COM



*Annual Percentage Rate based on an index of 3.50% plus the monthly average of the 26 week Treasury Bill (Auction High) and may be adjusted annually each March. Please call for more details.



CALL US FOR A FREE QUOTE
808.650.3458
www.HeroMovingHI.com

We offer our customers:

- FREE ESTIMATES & COMPETITIVE PRICING
- A WHITE GLOVE MOVING EXPERIENCE
- CLEAN & COURTEOUS MOVING STAFF
- ON TIME PICK-UP & DELIVERY
- LOCAL, INTER-ISLAND & COMMERCIAL MOVING

WE ARE LICENSED & INSURED

1 MONTH FREE STORAGE

FREE WARDROBE BOX RENTAL

\$50 OFF LOCAL MOVES

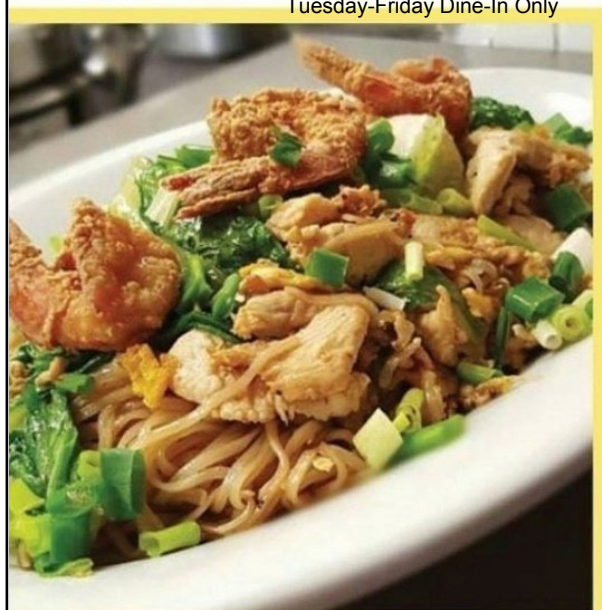
10% OFF PACKAGING SUPPLIES FOR MILITARY & VETERANS



★★★★★
CHECK OUT OUR REVIEWS ON
yelp

rajaneer

thai cuisine
at Hale'iwa Store Lots
Bring a toy for Operation: ToyBox for 10% off Lunch (before 4pm) Tuesday-Friday Dine-In Only



Bulletin Board



Featuring the largest selection of certified organic produce on the North Shore. No panic...ours is organic. Open 7 days. Mon.-Sat. 9am-7pm. Sun. 9am-5pm

66-445 Kam. Hwy
Haleiwa, Hawaii 96712
Next to the Post Office
808-637-6729 • 808-637-1922 fax

LTC

Laie Trucking Company, LTD

* Ready Mix Concrete * Recycled Aggregates
* Pump Service * Hauling * Equipment Rental

PH: (808) 293-8710 PH: (808) 293-1296
P.O Box 121 FAX: (808) 293-2890
Hau'ula, HI 96717 laietrucking@hawaiiantel.net

"A LOCAL COMPANY, BUILDING A LOCAL COMMUNITY"

N-C PLUMBING & SUPPLY

Cont. Lic. No. C-8913



- RESIDENTIAL & COMMERCIAL SALES & SERVICE
- CONTRACTING & DESIGN • HOME PLUMBING SERVICE
- PLUMBING FIXTURES, HEATERS • FREE ESTIMATES

Nestor P. Calilao (Owner)
P.O. Box 769
Waialua, HI 96791

Bus: 637-8662
Res: 638-5157
Cellular: 372-8718

Saccoccio & Lopez

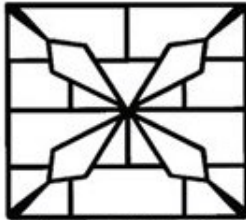
ATTORNEYS AT LAW

TRIAL LAWYERS

Serving Hawaii since 1984

637-7611

Personal Injury -Property damage
Criminal Law - Traffic Crimes
Landlord Tenant - Bankruptcy



GROVER MASONRY
Haleiwa, Hawaii

Serving the North Shore for 30 years!

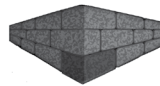
Rick Grover

(808) 983-9331 cell
(808) 638-8120 office

rick@grovermasonry.com

- *Foundations *Driveways
- *Sidewalks *Retaining Walls
- *Excavation & Lot Clearing

License # C-18302



CORNERSTONE MORTGAGE

Looking to Buy or Refinance? We Can Help You!



Manny Diaz
Loan Origintor
(808) 638-4849
mdiaz@cornerstone.us.com
www.cornerstone.us.com
NMLS ID: 451036



Cornerstone Equity Group, Inc., dba Cornerstone Mortgage is an equal opportunity lender. Licensed as a Mortgage Loan Originator Company by the HI Department of Commerce and Consumer Affairs, license number HI-340311. This is not an offer to lend. NMLS ID: 340311 and 1669660.

Munden Design & Build

Lic.#BC19632

Design • Plans • Permits • Construction
Additions & New Residences

808 391-8616

Providing quality work since 1978



"IF YOU BUILD IT, WE WILL PLUMB"



New Construction, Repair, Remodels

Dale Christensen C-29856 (808) 368-1473



Greekz Plumbing

License# C-32939
Phone 372-1820

LIC. #AG 18275

COWPER CONSTRUCTION

GENERAL ENGINEERING CONTRACTOR

Full Service Sitework
Contractor

Septic Systems & Tanks
Since 1978

Michael Cowper 638-7200
cowperhawaii.com

North Shore News



2020 Schedule

PUBLICATION DATE	EDITION	DEADLINE DATE
January 15	#1	January 3
January 29	#2	January 17
February 12	#3	February 2
February 26	#4	February 14
March 11	#5	February 28
March 25	#6	March 13
April 8	#7	March 27
April 22	#8	April 10
May 6	#9	April 24
May 20	#10	May 8
June 3	#11	May 22
June 17	#12	June 5
July 1	#13	June 19
July 15	#14	July 3
July 29	#15	July 17
August 12	#16	July 31
August 26	#17	August 14
September 9	#18	August 28
September 23	#19	September 11
October 7	#20	September 25
October 21	#21	October 9
November 4	#22	October 23
November 18	#23	November 6
December 2	#24	November 20
December 16	#25	December 4

Direct-Mailed to Every Home

MOKULEIA · WAIALUA · HALE'IWA · KAHUKU · LAIE

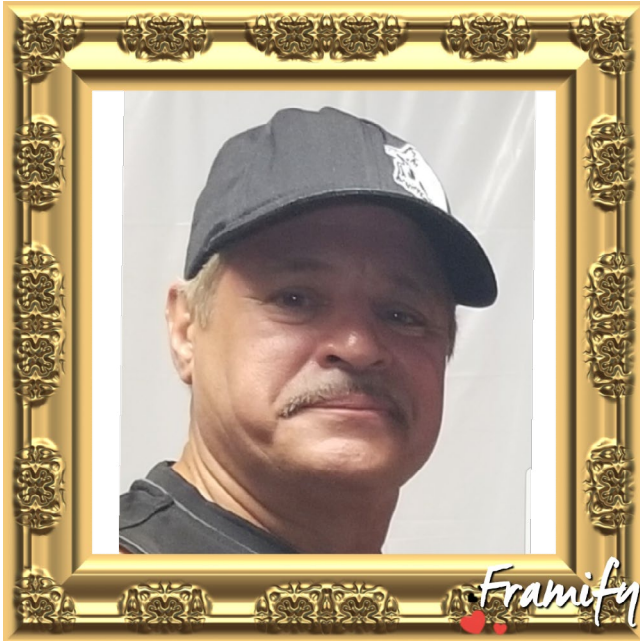
Every Other Wednesday

12,000 copies

"The North Shore's most popular publication" since 1970
 (808) 780-8037 · NSNHaleiwa@gmail.com · NSN4Linda@gmail.com
 www.northshorenews.com

David "Dave" Joseph Santiago, Jr.

February 9, 1956 - December 1, 2019



Services to be held at Valley of the Temple Mortuary, Kaneohe, on January 6, 2020, 6pm. On January 7, Valley of the Temple Mortuary, Service at 10:30am. Burial to follow at Hawaiian Memorial Park Cemetery.

Son, Brother, Dad, Papa, Great Papa, Uncle

He is survived by his Dad, Brother, 3 Sisters, 10 Children 34 Grandchildren and 1 Great Granchild.

HE WAS, AND ALWAYS WILL BE, LOVED BY ALL!!

Come join us to wish our loving Dave a beautiful and amazing farewell.



**North Shore Food Bank
@nsfoodbank
and**

North Shore Service Center
IHS, Alea Bridge, Catholic Charities, US Vets

Wednesday, December 18, 2019
Wednesday, January 8, 2020
Waialua Community Association
9:00am - 1:00pm

Haleiwa Evangelical Mission International
Come and join us
Sunday's at Waialua
Elementary School Cafeteria
Sunday School at 9:00 am
Worship Services at 10:00 am
For Prayer
Call 637-4567
Blessed to be A Blessing

"Children's Church"



**Waialua Community Association
dedicates the stage in
Memory of Gloria Andersen**



CLASSIFIEDS

The North Shore News is published every other Wednesday and mailed free of charge to all North Shore homes and businesses. Extra copies may be obtained at our office.

PRESS RELEASE POLICY: Submit press releases in person, mail or email to Editor, North Shore News, 66-437 Kam. Hwy., Suite 210, Haleiwa, HI 96712. Please type your releases and keep them shorter than 200 words unless they are of an unusual news interest. Releases should be viable news stories and are published on a **space available basis only**, with priority given to those received in our office first. You may attach photos. We are not responsible for the return of any photos. All materials are submitted at owner's risk. We reserve the right to edit and/or refuse all submissions including advertising.

EDITORIAL POLICY: We welcome articles and letters from our readers. Letters to the Editor are published on a space available basis only and preference is given to shortness of length, and quality of content. We prefer to run not more than one letter, per person, per 6 month period. Letters subject to edit.

Views expressed by our contributing writers and advertisers do not necessarily reflect the view of the management and staff of the North Shore News. All rights reserved. Reproduction in whole or part without permission is prohibited. © 2019.

Editor & Classifieds

Linda Seyler

Typography

Downtown General Store

Contributing Writers

Tom Jacobs
Betty Depolito

State Representative Lauren Matsumoto
Senator Gil Riviere
Councilmember Heidi Tsuneyoshi

Photography

Banzai Productions



Please recycle this newspaper.

SERVICES

SHORE ELECTRICAL SERVICE
New Const-Remodels
638-0049 / Lic#C20777

Computer Problems?
I can fix any MAC or PC.
Chris 371-3089

Andres Plumbing
All your plumbing needs
808-256-7337 Lic#C24500

Mobile Notary Public
Commission # 17-342
Call or text (808) 351-4405

**ESTRADA'S
WE HAUL 'EM**
Garbage-Rubbish-Trash
Call Rick 808-216-9419

ALOHA COMPUTER
PC/MAC Repair/Virus
Removal
**MOBILE COMPUTER
REPAIR SERVICE**
372-2667

**PET SITTING
North Shore**
Over Nights/
Pet Walk Services
\$10 Off for New Clients
343-7146 Emilie

Aloha Window Cleaning
Gutter Clean Outs
Pressure Cleanings
Window Cleanings
Call us today at
808-638-1630

**DOG/CAT NAIL
TRIMMING**
At your home- only \$20.
Call 808-388-5336

Paumalu Electric Inc.
C 18074

Residential & Commercial
New Installation & Repairs
Renovations. Remodels
Electric Meter Replacements

Dave Hancock 638-9054

Hawaii Tree Co.
Trimming & Removal
Professional-Reliable
Free Estimates
462-2749

**Sacred Journey
Healing Therapies**
No Botox-No Filler-No Surgery
Hawaii's Expert Holistic Esthetician LE
Call or Text 808 954-1032
66-216 Farrington, Waiialua
59-712 Kamehameha Hwy.
Instagram:sacred_journey_healing

**CS EuroCars Kapolei
Mercedes Repair Shop**
with low labor rates
ASE Certified Technician
27 years experience
2116 Lauwiliwili St. Unit 104F
Kapolei, HI 96707 - Under New mgmt.
808-682-1957

**North Shore Mobile
Detailing**
•Cars.Trucks.SUVs.Boats.RVs.
Motorcycles.
•Call/Text for a free estimate
•We come to you!
(808) 635-6631

BUSINESS SERVICES CENTER

Fast & Convenient Copy, Fax, Scan,
Computer/Internet, Laminate, & More



Across from
the Haleiwa
Post Office

637-4558 • gonorthshore.org
#gonorthshore

**HOT YOGA
NORTH SHORE**

**Happy Holidays
SALE!!!**

Please call for class schedule
637-5700

HARVEY'S TOWING LLC

24 hr Towing Service
Lockouts, Jumpstarts &
Recovery. Specializing in
opening locked car doors.
Call anytime 478-0333

**WHY KNOTT
FLORIST
Waiialua Shopping
Center**
637-9380

Private Fitness Training/Yoga
I Come To You!
808-282-8995
www.evolvefitness.com/
mabelle.lee@gmail.com
Kupuna Discounts

**North Shore Martial Arts
Self Defense Training**
All Ages, Come Improve
Mental & Physical Strength
M & W 7-8pm WCA
Text or Call 216-4335

**Loko Ea Community
Work Day**
Saturday, December 21
Loko Ea Fishpond, Haleiwa
For info call 637-3232



Like us on Facebook:
[Facebook.com/
NSNewsHaleiwa](https://www.facebook.com/NSNewsHaleiwa)

HOW TO CONTACT THE NORTH SHORE NEWS

Letters to the Editor, and other items submitted for publication consideration may be sent to us via:

MAIL: 66-437 Kamehameha Hwy., Suite 210, Hale'iwa, HI 96712

E-MAIL: NSNHaleiwa@gmail.com

PHONE: (808) 780-8037

Office Hours: Monday – Friday 10 a.m.-2 p.m.

www.northshorenews.com

CLASSIFIED ADS

Next Issue - Jan. 15, 2020
Deadline Date - Jan. 3, 2020

**NOAA Stranded,
Entangled
Injured Sea Turtles**
(808) 725-5730

OFF da ISLAND
Are you leaving Oahu on vacation or business? Do you live on a neighbor island, the mainland or foreign country and subscribe to the North Shore News? Send us a photo of someone in front of a sign or landmark holding a copy of the NSN. Email your photo along with the person or persons' name, community of residence, telephone number and photo location to: NSNHaleiwa@gmail.com.

Classified Ad Rates
3 lines (min.) \$18.89
4 lines \$25.13
5 lines \$32.45
1" Box Ad \$41.88
(27 characters in each line)
Include your contact information.
*Ads can be dropped off in mail slot, mailed, or emailed. Pay by check payable to: North Shore News or credit card by phone order.
We reserve the right to refuse any advertisement with a full refund.
North Shore News • 66-437 Kam. Hwy., Suite 210, Haleiwa, HI 96712
(808) 780-8037 • NSNHaleiwa@gmail.com

LAST CALL!
Toy donations for Operation: Toy Box last day to donate December 23- drop off toys at North Shore News.



Marianne Abrigo, Properties
Specializing in - North Shore Real Estate
Ask for our list of available properties and/or a free market analysis.
Marianne M. Abrigo
"Realtor since 1974"
Office 637-3511
Fax 637-0777
Email mabrigo222@aol.com

HELP WANTED


Household Help
Beachfront Estate
16 hours/week
808-637-0808

Pet care professional, vet tech or grooming experience. F/T or P/T in Pupukea.
Salary negotiable
638-7073


Mon, Tues, Thurs, Fri mornings 7-12 Must be clean, responsible, no drugs & phones. Serious only
637-8155 lv message

Retail Sales Associate
Polynesian Treasures North Shore Marketplace
Now Hiring for PT/FT sales position. Previous retail and management or leadership experience a big plus!
Competitive wage plus commission and bonus.
Fax resume to 637-8535 or email to polynesiantreasures@hawaii.rr.com

MATSUMOTO SHAVE ICE
Now Hiring!
Apply in person daily 9am-4pm
808-637-4827



McDonald's is Hiring at Haleiwa and Laie
Competitive Hiring Wage (with a Raise after 60 Days) • Flexible Hours • Free Food and Uniforms • College Tuition Assistance (\$2500 annually) • Pay for Grades (both High School and College Students) • Health & Dental Insurance for Qualifying Employees • FUN Coworkers! • Free Classes to Earn a High School Diploma or GED • Incentive Pay for GREAT Customer Service • More benefits available! Stop in and See Us Today! It's EASY to apply: You can Text 36453 'apply10761' to apply at Haleiwa or 'apply33340' to apply at Laie Or go online and select the Haleiwa or Laie restaurant: <https://careers.mcdonalds.com/main/>



WAIMEA VALLEY
Waimea Valley is looking for Licensed General Contractors who are interested in performing work for Waimea Valley in 2020. Please provide a letter of interest and current contractor's license to Crystal Oshiro at coshiro@waimeavalley.net.
2020 Projects include:
- Upgrades and repair to Snack Bar and Catering kitchen area
- Upgrades and repair to Proud Peacock
- Beam replacement in Hale Hoike
- Repairs to the Old Nursery
- Plumbing upgrades at the Visitor's Center
- Visitor Center stair replacement and deck repairs
- Fire suppression system upgrades
Requests for quotes will be issued in early 2020 to qualified and registered contractors.

Retail Sales Surf & Sea
Hawaii's Ocean Sports Headquarters is always looking for hard working, energetic people to become a part of our sales team. Good pay, bonus, benefits. Japanese speaking a plus. Ocean sports experience and dive instructor wanted. Please contact surfnsea@surfnsea.com for details.
Apply in person daily 9am-7pm
62-595 Kam. Hwy., Haleiwa

FOR RENT
3bedroom, 1.5 bath, house for rent. Com park 2 cars, \$1800. Utilities and cable not included. Call 492-6619, 780-8063, 637-5358

TABLES & CHAIRS
Call North Shore News 780-8037
All proceeds go to the North Shore Food Bank

Every time a hand reaches out to help another... that is Christmas
Every time someone puts anger aside and strives for understanding... that is Christmas
Every time people forget their differences and realize their love for each other...that is Christmas
May this Christmas bring us closer to the spirit of understanding... closer to the blessing of PEACE!

MISCELLANEOUS

FREE Wooden Pallets
Good Condition
See Bernie at the Waialua Community Association
office 9am-2pm
637-4606

Parkinson's Group Meeting
Group meets at the Waialua United Church of Christ on the 1st Saturday of every month. Friends & Family Welcome
Next meeting Jan. 9 @10am
northshoreparkinsons@gmail.com

North Shore Country Market
Welcome New Vendors
Only \$15 Space Fee
Info online
NorthShoreCountryMarket.NGO

North Shore Christian Fellowship
Ohana Produce Distribution
Friday, Dec. 20 10am
Waialua Community Association

Vegan Skin Care & Nutrition
Looking for health minded people for our team that is expanding on Oahu.
Work part time from home with potential to earn a corporate income within a year.
Call Kathy (808) 223-5392

Sunset Beach Food Bank
Every Tuesday
Sunset Beach Christian Church
12 noon- 3pm

Would you like to get the North Shore News via email in color! Just send us a message at: NSNHaleiwa@gmail.com and you get the NSN online every two weeks!

North Shore Food Bank
@ nsfoodbank

*Happy Holidays and
a Healthy New Year from
Kahuku Medical Center!*



*M*ahalo for the opportunity to serve our Ko`olauloa and North Shore communities for nearly a century, providing comprehensive care all in a country setting:

- 24 hour Emergency Services
- Private Patient Rooms
- Acute, Swing Bed
- Inpatient & Outpatient Services
- Imaging, including diagnostic imaging, CT scanning, echocardiograms, screening mammography and ultrasound
- Laboratory
- Rehab, including physical therapy, occupational therapy and speech therapy
- Inpatient Pharmacy
- Primary Care Clinic, including internal medicine, family medicine, geriatric care and pediatrics



www.kmc-hi.org | 808-293-9221