



**"E Ala Na Moku Kai Liloloa"**

In This Issue:  
 Aloha 'Aina Recycling Drive  
 Page 6  
 Harvest Moon Dance  
 Page 11  
 Banzai North Shore Wireless  
 Page 15



NORTH SHORE NEWS September 25, 2019 VOLUME 36, NUMBER 18



Skydive Hawaii's big donation to WHIS for air conditioning. Frank Hinshaw- Skydive Hawaii, Jill Komperda-Fundraising Coordinator & Neal Okamoto- Vice Principal. Photo: Jill Komperda

**WHIS Educators and Students Receive a Cool Donation**

"We're hot, we can't concentrate!" Waialua High and Intermediate School teachers and students are all experiencing this sweaty and

irritable situation. Vice Principal Neal Okamoto is managing heat abatement activities at WHIS with the "Schools Directed

AC" Program, a new Hawaii Department of Education Program that empowers schools and communities to take the lead on cooling classrooms.

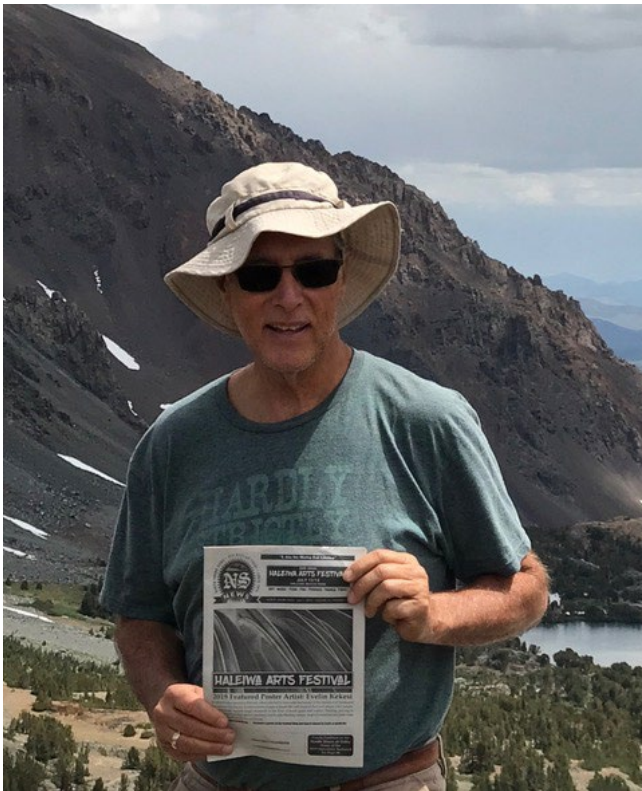
Mahalo to Frank Hinshaw, - Skydive Hawaii parachuted in with a \$2500. donation to jump start the program.

WHIS needs your help, see page 2 for more information.

\*\*\*\*\*ECRWSSSEDMD\*\*\*\*

RESIDENTIAL CUSTOMER

PAID  
 U.S. POSTAGE  
 HONOLULU, HI  
 PERMIT NO. 1479



## OFF da Island in Mono County, California

Waiialua resident Mark Tomes recently took a 3/12 week vacation on the mainland visiting family in California, Tennessee and Ohio. He spent his time hiking in the Eastern High Sierras specifically at the Virginia Lakes in Mono County, California. Mark stopped to take a picture at the Green Lake Summit (elevation 11,000 ft) and took a break to read the North Shore News which reminded him of the good times back on Oahu's beautiful North Shore.

For more information on the OFF da Island campaign turn to page 23.

**North Shore Ramblers**

**Sunday, Oct. 6, 2019**  
**4 p.m.**  
**Waiialua Bandstand**

*Bring your mats and lawn chairs  
and enjoy the show!*

[www.waiialuabandstand.com](http://www.waiialuabandstand.com)

**WHIS Air Conditioning Fundraiser**

Keep our classrooms cool! To donate write a tax deductible donation to:

WHIS, drop off at the school or mail to:  
Attn: Kim Ramirez "AC"  
Waiialua High & Intermediate School  
67-160 Farrington Hwy, Waiialua 96791  
If you are a WHIS alumni add your class year.

MAHALO

**The Hale'iwa Family Dental Center, Ltd.**

- Adults and children
- Most cases completed in 4-12 months
- Clear braces available
- Lower cost
- University tested
- Used for over 20 years

Produced by Todd R. Okazaki and Staff

*"Straighten those crooked teeth that have bothered you for years"*

Conveniently located behind First Hawaiian Bank in Historic Hale'iwa Town  
Call 637-9652 for your reservation

**North Shore News Pet Issue**

Would you like to see your pet(s) featured in the NSN?

Email your pet pictures with a caption to  
NSNHaleiwa@gmail.com  
NSN4Linda@gmail.com

Publication Date:  
October 9

Deadline Date:  
September 27

Kisa and Bebe





DINNER CATERED BY  
**KE NUI KITCHEN**  
FRESH REGIONAL CUISINE | EVENT CATERING | PRIVATE CHEF EXPERIENCES

### Dinner by Ke Nui Kitchen & Moon Walk

Friday October 11, 6pm at the Proud Peacock

**50% OFF** moon walk admission with all dinner reservations!  
 Experience the moonlit Valley at night ... Full details/pricing, menu, and online reservations at [waimeavalley.net](http://waimeavalley.net)

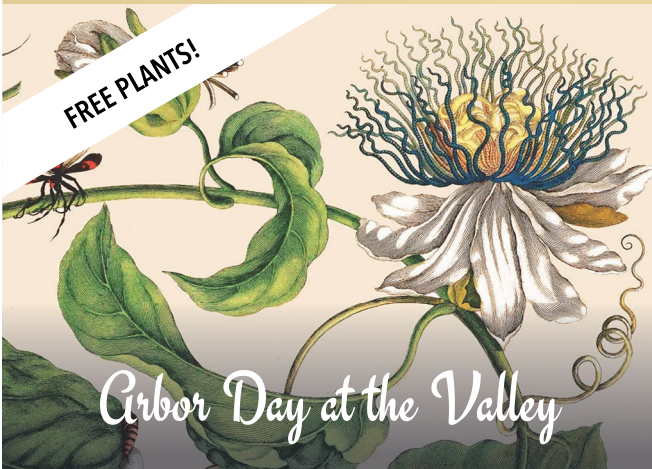


**HARVEST  
 MOON DANCE**

### Harvest Moon Dance Fundraiser

Friday October 11, 7pm at the Pikake Pavilion

All proceeds benefit programs to preserve and perpetuate Waimea Valley's cultural and natural resources! ... Full details and tickets available online at [waimeavalley.net](http://waimeavalley.net)



*Arbor Day at the Valley*

### Arbor Day Giveaway & Seed Exchange

Saturday November 2, 9am - 12pm

We're celebrating Arbor Day with **FREE** giveaways of trees, shrubs, and native plants; plus, a special seed exchange in partnership with Hawai'i SEED and Slow Food O'ahu



**MAKAHIKI FESTIVAL**

### Makahiki Festival & Heiva Tu'aro i Vaihi

Saturday November 9, 9am - 3:30pm

Traditional Polynesian sports competition, demonstrations, hula performances, and more ... \$5 kama'aina and military admission all day long! Full schedule at [waimeavalley.net](http://waimeavalley.net)



**WAIMEA VALLEY**  
 HI'IPAKA LLC

ON THE NORTH SHORE ACROSS FROM WAIMEA BAY

OPEN 7 DAYS A WEEK, 9AM - 5PM

CALL: (808) 638-7766

@WAIMEAVALLEY  

@WAIMEAVALLEYOAHU 

WHERE HAWAII COMES ALIVE

WAIMEAVALLEY.NET

56th Anniversary

**BIRTHDAY**

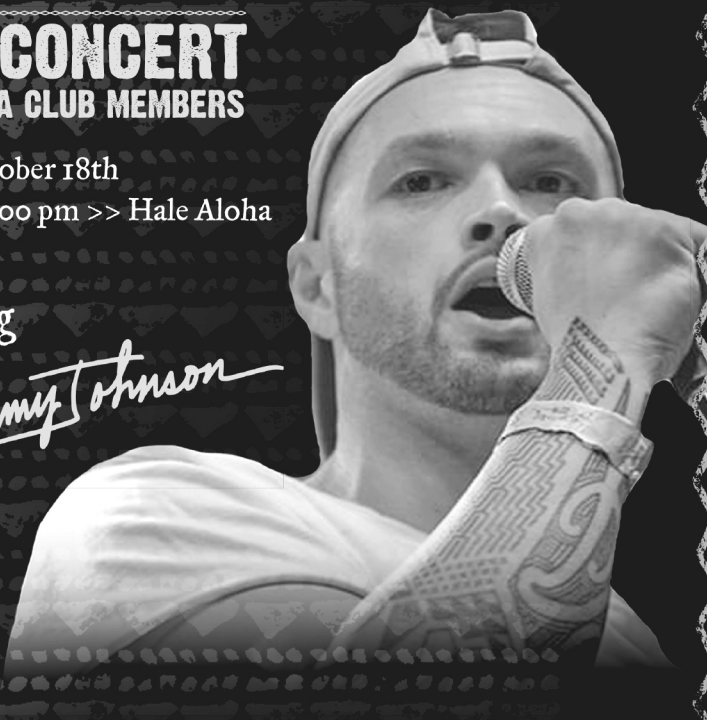
BASH CELEBRATION

**FREE CONCERT  
FOR 'OHANA CLUB MEMBERS**

Friday, October 18th

8:00 — 10:00 pm &gt;&gt; Hale Aloha

Featuring

*Sammy Johnson*

Mahalo for being  
a part of our  
Polynesian Cultural  
Center 'ohana.  
Join us for our  
56th Birthday Bash  
Celebration.

Free prizes every Friday  
in October.

Stay tuned for a big  
announcement at our  
birthday celebration.



For more details,  
visit [polynesia.com/ohana56](http://polynesia.com/ohana56)  
or call (808) 293-3469

**\* CRAFT FAIR \*****Saturday, October 5, 2019****9:00 a.m. to 2:00 p.m.**COME AND JOIN US AT OUR  
ANNUAL CRAFT FAIR

Jewelry, Bags, Accessories, Baby Items, Handmade  
Crafts, Beauty Items, Household Items, Cotton  
Candy, Etched Glass,  
Bento, Sushi . . . and More!

**HALEIWA JODO MISSION**

66-279A Haleiwa Road

(Opposite end of Alii Beach Park from the Haleiwa Boat Harbor)

**Vendor Spaces May Still be Available**

For more information on vendor spaces or  
pre-ordering bento/sushi:

Email: [haleiwajodominionyba@gmail.com](mailto:haleiwajodominionyba@gmail.com)

Telephone: (808) 637-4382

FB: *Haleiwa Jodo Mission - Buddhist Temple*

North Shore Soccer Club / HYSA  
(Hawaii Youth Soccer Association)

Actively recruiting players to  
participate in winter competitive  
outdoor season.

All practices on North Shore.  
Games at Waipio Soccer complex  
Boys birth years 2008, 09, 10  
Girls birth year 2010

Also recruiting 2008 boys for  
U12 Futsal fall season played at  
808 futsal in Kapolei

Contact:

Coach Mike

[stormschawaii@gmail.com](mailto:stormschawaii@gmail.com)

808-754-3107

Support North Shore Soccer!!!





Aloha 'Aina Recycling Drive volunteers including Kokua Hawaii Foundation members Jennifer, Natalie, Kim & Jack. Also Sunset Beach Elementary School teacher Laura Cummings with her 6th grade students. Photos: Denise Antolini

## Aloha 'Aina Recycling Drive

During the annual Aloha 'Aina Recycling Drive at the end of August, the Sunset Beach Elementary School community was able to divert approximately 6,000 pounds of "stuff" from landfills. Members of the community recycled scrap metal, electronic waste, used cooking oil, car batteries, and donations for Goodwill and Habitat for Humanity. Ms. Cummings' 6th graders did an outstanding job as volunteers at the event, and we are extremely grateful to Kokua Hawaii Foundation for helping our school organize the event with wonderful recycling partners: Schnitzer Steel, T&N Recycling, Hawaiian Hope, Habitat for Humanity, Pacific Biodiesel, Interstate Batteries, RRR Recycling, and Goodwill Hawaii.



**Are you raising funds for your non-profit group activities?**



SADA'S

MalasSadas

**How about considering Paalaa Kai Bakery's Snow Puffy/Sada's Malassada Fundraiser Program?**

**A fun and tasty way to earn funds to help support your groups many activities!**

**Visit us online at our website below**  
[www.pkbsweets.com](http://www.pkbsweets.com)

# Astronaut Lacy Veach Day of Discovery set for Oct. 26 at Kamehameha Schools Kapalama Campus

## Free science event inspires & equips next generation of explorers

Registration is now open for the the 18th annual Astronaut Lacy Veach Day of Discovery to be held on Saturday, Oct. 26, 2019, 7:45 a.m. to 12:30 p.m., at the Kamehameha Schools Kapalama Campus. To register for the event and the full workshop schedule, visit: <http://www.spacegrant.hawaii.edu/Day-of-discovery/index.html>.

The free science event, which honors the life and legacy of the late astronaut who grew up in Honolulu, is designed for students in grades 3-12, parents, and educators of all grade levels, with more than 20 hands-on, interactive workshops covering science, technology, engineering and math topics.

Nainoa Thompson, president of the Polynesian Voyaging Society, and NASA astronaut Joseph M. Acaba are the featured keynote speakers. Acaba, an educator who taught high school science and middle school math and science before his arrival at NASA, is also the first astronaut of Puerto Rican heritage. The California native has logged 306 days in space on three flights.

Thompson, who went to school with Veach, connected students in Hawai'i with the crew of the space shuttle Columbia when both men were on ex-

peditions in 1992 – Thompson on the ocean aboard the voyaging canoe Hokule'a and Veach orbiting in space aboard Columbia. The conversations between the students and crews on both vessels highlighted the importance of exploration.

Born on Sept. 18, 1944, Charles Lacy Veach graduated from Punahou School and received an engineering degree from the U.S. Air Force Academy. He had a distinguished career in the U.S. Air Force as a fighter pilot before joining NASA, where he flew on two space missions and logged 436 hours in space. Veach died Oct. 3, 1995, in Houston, Texas. He would have been 75 years old today.

Astronaut Lacy Veach Day of Discovery is sponsored by Hawaiian Electric, Kamehameha Schools and the Hawai'i Space Grant Consortium with support from the Chatlos Foundation, NASA, and the family of Lacy Veach.

**North Shore News**  
**Call 808-780-8037**  
**For Discounted Advertising Rates**



Committed to your keiki's  
**Journey**

**K-12 Campus Education**  
World-class curriculum rooted in Christian and Hawaiian values.

**Kipona Scholarship**  
Need-based financial assistance for keiki attending participating private schools in Hawai'i.

**Applications Due Sept. 30**  
**For the 2020-2021 school year.** Apply for both options in application.

FOR MORE INFORMATION: Web: [ksbe.edu/k12](http://ksbe.edu/k12) • Phone: 808-534-8080



**Kamehameha Schools**

Kamehameha Schools policy on admissions is to give preference to applicants of Hawaiian ancestry to the extent permitted by law.



# 10

*Years*  
2009-2019

## Mālama Loko Ea Foundation

### Sake and a Sunset

Celebrate with us as we embrace 10-years of this remarkable journey and restoration efforts for Loko Ea Fishpond. A beautiful night under the stars with supporters, community, and 'ohana on the private grounds of Pua'ena in Hale'iwa.

*Reserve Your Tickets!*  
**www.EVENTBRITE.com**  
Hosted by Mālama Loko Ea Foundation  
501c(3) Non-Profit Organization

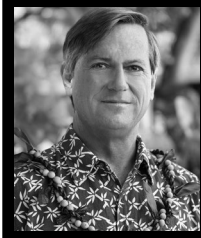
# 09.28.19

*Saturday*  
430pm-8pm

Heavy Pupus \* Food Stations \* Entertainment \* Silent Auction \* Open Bar  
**Sponsorship tables, contact: [rowena@lokoea.org](mailto:rowena@lokoea.org)**  
Event website: [www.lokoeafundraiser.weebly.com](http://www.lokoeafundraiser.weebly.com)

\$125 Individual \* \$2000 'Ohana Sponsor \* \$5000 Lehua Sponsor \* \$7500 'Ohe Sponsor





**Senator  
Gil Riviere**  
**Serving Oahu's North and  
Windward Shores**

### This and That

One of the best parts of my job is getting to work with people in all walks of life and to learn about an endless number of things happening throughout our district. I get to go on some amazing field trips and gain knowledge in a wide array of disciplines. In this report, I will share some of my experiences from just the last couple weeks.

Upon returning from a top level legislative conference in Kentucky, known as the Toll Fellowship, I soon joined the Oahu Invasive Species Committee (OISC) in Kahana Valley to seek out the dreaded devil weed. After three stream crossings and a long hike through heavy vegetation, we arrived at a site where this terribly invasive weed had been located. As we hiked, a helicopter surveyed the valley for new outbreaks. Our friends at OISC are working on multiple campaigns, including the fight against tiny fire ants, coqui frogs, coconut rhinoceros beetles, rapid ohia rot, and much more.

I have had an active schedule of meetings with state officials regarding mental health, child welfare, affordable housing, justice reform, and homelessness. While under no delusion that these complex and vexing issues are easy to solve, I am committed to increasing my understanding of the issues to better advocate for solutions.

One encouraging program likely to be a game changer is the Hawaii Coordinated Access Resources Entry System (CARES). This continuum of care program kicks on of October 1st and will ramp up to around the clock coverage as soon as possible. Coordinating mental health and addiction services through the CARES network, backlogs should be reduced or eliminated, and inefficiencies will be identified so that overall service can be improved. We have emergency rooms for 24/7 care of physical crises. CARES will be that 24/7 emergency service for emotional crises.

Turtle Bay Resort opened a new community garden on part of its 468 acres mauka agricultural lands. Thirty-two lucky individuals and community organizations, out of more than 200 applicants, won the lottery for 500 square feet of quality garden space in Laulima Gardens. Pono Pacific is the company charged with reorganizing the hundreds of acres of ag land and supporting small farms to profitably grow local food for local food consumption. By the look of things, they should succeed.

Three new industrial solar electricity projects, capable of producing 110 MW of energy, were dedicated last week. At the blessing, I saw how the panels are

mounted well off the ground, high enough to maintain optimal operating temperature and so that the solar panels can tilt to follow the sun across the sky. Sheep ranching is planned to maintain the vegetation.

The Department of Education is revising the Weighted Student Formula for school funding based on the number of students. The new plan increases the allowance for neighbor island schools while taking a small bite out of every other school's funds. I testified that our small rural schools need similar consideration. After debate and acknowledgment of challenges for our schools, the Board accepted the committee recommendation, but left the door open to consider additional support for our small rural schools on Oahu.

The Senate held a two-day special session to confirm seven new judges. The Kahuku community continues to rise up against the proposed wind farm, and another legal challenge has been filed against Na Pua Makani. Mahalo for allowing me to serve this wonderful district. There is never a dull day.

Please do not hesitate to call or write if you have any opinions, questions or solutions that might help me better represent you. My phone number is 586-7330. My email address is SenRiviere@capitol.hawaii.gov. Follow us on FaceBook or online at SenatorRiviere.com. Please visit us in Room 202 at the Capitol; or let's talk closer to home, maybe the next time we pass in the street. Mahalo.

## Take a peek at PKB's Cookie Cutter Savings Special



Buy 2 bags of any of our assorted cookies and get 15% OFF your entire order OR get 3 bags and earn a BIG 20% savings

Almond, Peanut Butter, Chocolate Chip, Coconut Macaroon, Oatmeal Raisin and Snowball

This offer is valid from Sept. 25 - October 8, 2019. Offer cannot be combined with other discounts or daBest VIP card.

[www.pkbsweets.com](http://www.pkbsweets.com)



**Representative  
Lauren  
Matsumoto**  
Serving You in District 45

Aloha Friends and Neighbors!

Have you ever wondered how laws get made? Or what the difference between the Legislative and Executive branches are? Coming up next month is your opportunity to answer those questions and more at my second annual Capitol Talk & Tour!

It's a great Fall Break opportunity for the whole family to learn more about our State Capitol and the Legislative system. I'll take you and your family on a guided tour of the State Capitol to hear its unique history, get an inside look into the Legislative and Executive chambers, learn how to make your voice heard in the legislative process, and so much more. I hope to see you there! You can RSVP by calling (808) 586-9490 or at RepMatsumoto.com.

Despite the important work that happens in Government, what happens in our communities is perhaps even more significant. I'm always amazed by the incredible acts of service and selflessness displayed by our North Shore community. This year, St. Michael School in Waiialua will be celebrating 75 years of providing a holistic education for generations of keiki.

St. Michael School opened its first class of 19 kindergarten students in 1944. While Allied forces were preparing to liberate occupied France in one of history's greatest feats of bravery, Waiialua saw its own benevolent act when Father Ernest Claus SSCC started St. Michael School's first class. And just seven months later, a first grade was added.

Five years later the school grew to include a full eight grades. Over the next several decades St. Michael School continued to add students, expand school facilities, and establish itself as an integral part of the Waiialua community. The school also stood out in other ways. In the early 1970s, due to an early shortage of Sisters, St. Michael School became the first Catholic School in Hawaii to be staffed completely by lay people. This set a precedent that persists to this day for a strong partnership among parents, school staff, and clergy.

The school's uniqueness and dedication to holistic education has kept going. In 2017, the current principal Mr. Kainoa Fukumoto implemented a visionary integrated technology plan that supports 21st century teaching methods alongside the school's traditional Catholic education mission. Keiki can take advantage of cutting edge technology to prepare them for today's fast-changing economy while at the same time still being immersed in the school's mission to "educate the whole person"

through service opportunities, reverence for liturgy, and orthodox catechesis.

And as if forming Hawaii's future leaders wasn't enough, St. Michael School remains committed to serving the North Shore Community. The school leads the way in serving the homeless, providing food for the needy, and caring for the community's kupuna.

St. Michael School is a great example of what can be achieved when parents, teachers, and school staff are unified in the same mission of providing a quality, forward-thinking education with outstanding community service. Let's give St. Michael School our appreciation for 75 years of outstanding service in the community.

As always, please feel free to contact me if you have any questions or concerns about happenings in our community. Call my office at (808) 586-9490, email me at RepMatsumoto@capitol.hawaii.gov, or visit RepMatsumoto.com.

### Correction

September 11, 2019 issue:  
Pupukea Seniors  
to inquire about membership  
call Verta at 638-7213

## EVERYONE WELCOME



**HALEIWA JODO MISSION -  
BUDDHIST TEMPLE**  
66-279A Haleiwa Road  
(808) 637-4382

FaceBook:  
Haleiwa Jodo Mission - Buddhist Temple

### *Buddhism 101 Series* **October - Buddhist Tales**

**Sunday, October 6**

9:45 a.m. - Introduction to Temple

10 a.m. - Monthly Service where Rev. Koji Ezaki will share Buddhist Tales

**Sunday, October 13**

8:00 a.m. Kokua Day (volunteer church clean up)

**Sunday School (with kids' activities)**

Please call for date & time

**October 20 & 27**

8:00 a.m. - Sutra Chanting (meditation practice)





# TURTLE BAY FOUNDATION

## NOW ACCEPTING APPLICATIONS

---

**TURTLE BAY FOUNDATION INVITES NORTH SHORE AND KO'OLAULOA  
NONPROFIT ORGANIZATIONS AND COLLEGE-BOUND STUDENTS  
TO APPLY FOR GRANTS OR SCHOLARSHIPS**



**IN 2018** Turtle Bay Foundation awarded **63 SCHOLARSHIPS**, supported **43 SCHOOLS**,  
and helped **40 NONPROFIT AND COMMUNITY ASSOCIATIONS**.

**Since 2012, more than \$630,000 grants and scholarships have been awarded.**



Applications can be found online at  
[turtlebayresort.com/About/The-Resort/  
Turtle-Bay-Foundation](http://turtlebayresort.com/About/The-Resort/Turtle-Bay-Foundation)

Applications are due by 3 p.m. on  
Friday, October 11, 2019.

---

For more information, please contact us.

Email: [info@turtlebayfoundation.com](mailto:info@turtlebayfoundation.com) | Phone: 808-447-6953

# How to Grow Your Business Without Risking Everything



**ALFREDO GARMA**

Alfredo will break down the importance of branding and the power of a strong brand.



**NATE BURGOYNE**

Nate will share the core strategy that most business owners overlook when hiring a web designer or going the DIY route.



**CHRIS WALL**

Chris will share the surprisingly simple formula he uses to grow businesses with a next-to-nothing advertising budget .

Yours FREE



## COFFEE GALLERY THURSDAY SEPTEMBER 26 @ 6PM

**BONUS: All attendees will receive a FREE 2 MONTH SUBSCRIPTION to "Do You Love Us" a program that lets business owners get more 5 star reviews without even asking for them. You'll also receive The Ultimate 5 Star Review Game Plan book, the companion piece to "Do You Love Us"**



Dear Editor,

The bus #52 route got changed, to give drivers shorter routes. Now there is a #60, for the north side of Oahu and #52 for the south side of Oahu. The drivers get time off so, buses at stop #2298 (Haleiwa Beach Park) by the WWI monument is one area where transferring from one bus to the next is not very accurate. At stop #2298, there is not enough benches for the tourist traffic so, riders are standing awaiting the bus. Then there is the tourist riders requesting to bring rolling luggage on the bus which is not allowed.

This is one persons view of bus traffic over the summer.

Aloha,  
James C.

Dear Editor,

Kahuku Lawyers Filing Motion for Relief with PUC Against Na Pua Makani Wind Project

Lawyers representing the Kahuku community, and local organizations, filed a Motion for Relief before the Public Utilities Commission on Wednesday, September 11th at 3:00pm. Community members, including the recently formed grassroots organization Ku Kia`i Kahuku, are hoping that the motion can force decision makers to reconsider their approval of the permit granted to Na Pua Makani wind corporation before their final EIS was completed and despite community opposition. Local groups are hoping that this will be another possible way to stop the wind turbines coming to Kahuku since there has been widespread community opposition to the project since its inception.

Community members, including parents and children from Kahuku Elementary school which will be affected by turbines, as close as 1,750 feet to the elementary school, showed up during the filing. They were in attendance to show that the PUC's decision will have a huge impact on the community and that the community continues to stand in opposition to this unwanted assault on the health and wellbeing of the people and environment in the area.

Mahalo

### Letters to the Editor

Send your letters, 200 words or less to:  
NSNHaleiwa@gmail.com



# HARVEST MOON DANCE

*A Fundraiser for Waimea Valley*

**FRIDAY OCTOBER 11  
7PM**

*Featuring*

**JOE GREEN AND THE  
NORTH SHORE BAND**

*Menu by*

**KE NUI KITCHEN**

FRESH REGIONAL CUISINE | EVENT CATERING  
PRIVATE CHEF EXPERIENCES

**\$20/Adult (\$30 at the Door)**

**Tickets Include Light Pupus**

Additional Food Available for Purchase

Tickets/More Info:

**WAIMEAVALLEY.NET**

All proceeds benefit programs to  
preserve & perpetuate Waimea Valley's  
cultural & natural resources



**WAIMEA VALLEY**  
HI'IPAKA LLC

  @WAIMEAVALLEY

 @WAIMEAVALLEYOAHU





**KTUH 50<sup>th</sup> GOLDEN ANNIVERSARY**  
**PRESENTS THE**  
**RICHARD THOMPSON**  
**ELECTRIC TRIO**

**OCT. 4, 2019**  
**FRIDAY 8:00 PM**  
**HAWAIIAN BRIAN'S**  
**1680 KAPIOLANI BLVD. 2<sup>ND</sup> FLOOR**  
**ktuh50.brownpapertickets.com**

**HONOLULU** 90.1 FM **HAWAII**

UH Student Radio Station KTUH Celebrates 50 Years with Legendary Guitarist Richard Thompson- KTUH has been a North Shore favorite at 91.1, one of only two stations available on the North Shore. KTUH is excited to announce The Richard Thompson Electric Trio headlining the October 4th celebration at Hawaiian Brian's in Honolulu. The concert will begin at 8pm followed by The KTUH After Party featuring Z-Trip from 11pm until closing.

Listeners should go to [ktuh.org](http://ktuh.org) for a link to purchase tickets or [ktuh50.brownpapertickets.com](http://ktuh50.brownpapertickets.com)



# Rainbow Watersports Celebrates 11th Year, Stands Up Against Sex Slavery

Rainbow Watersports is celebrating 11 years as North Shore’s original stand up paddle tour company, beginning in 2008 in Haleiwa. Since its inception, this local business has expanded their offerings to include SUP yoga and twilight glow paddling, kayaking, and a variety of water sports activities for tourists and kama’aina.

Through its exposure to people from all over the world, the company has become a platform to make a difference in the community and in the world. Besides teaching water sports skills, the team at Rainbow Watersports informs visitors about local Hawaiian history, the importance of protecting Hawaii’s wildlife, supporting local businesses, and using reef-safe sunscreen to protect the reef.

“If we can educate one person on these important issues, and that person then educates another and so on, we can make a difference,” explains Heidi Burgoyne, owner of Rainbow Watersports. Most notable is their passion to help fight against sex slavery, a heinous and often hidden crime that is spread worldwide, even here in Hawaii.

Since 2017, Rainbow Watersports has been informing their paddlers about sex slavery and donating a portion of their monthly profits to Operation



Underground Railroad (O.U.R.), an organization that actively rescues children caught in the sex trade.

Of the 6 million children living as slaves today, 2 million are being sex trafficked. O.U.R. undercover teams of former Special Operations personnel fearlessly track down the crime rings and liberate the children. (See www.ourrescue.org) O.U.R. brings hope to a daunting situation, and Rainbow Watersports is lending support by helping people see how they, too, can help.

To kick off their 12th year, Rainbow Watersports is donating all their profits toward Operation Underground Railroad for 3 days, October 17-19. There will also be an informational tent about O.U.R., with ways people can get involved. “We invite everyone in the community to come enjoy stand up paddling or kayaking, and “stand up” against sex slavery,” shares Heidi. Reservations for stand up paddling or kayaking can be made through their website, www.rainbowwatersports.com, or 1-800-470-4964.

Other ways to donate to Operation Underground Railroad is through Rainbow Watersports’ fundraising page, <https://my.ourrescue.org/fundraisers/rainbow-watersports-fundraiser>.



## 2019-2020 BELL SCHEDULE

### Waialua High & Intermediate School Homecoming Information:

9/26 Homecoming Parade, 4:30 p.m. starting from Waialua Rec Center to Waialua High & Intermediate School. Skit and Bonfire to follow at the school.

9/27 Homecoming Game, 6:00 p.m. WHIS vs. McKinley

### October Upcoming Events:

10/4 1st Quarter Ends

10/7-10/11 Fall Break

10/15 School Community Council, 3:45 p.m. in the school library

10/30 Second Cup of Coffee, 8:15 a.m. in the school library

10/30 PSAT, 9th – 11th Grade, WHIS-Gym, Check in at 7:30 a.m. Test starts promptly at 8:00 a.m.

MON	TUES * THURS * FRI	WED	ASSEMBLY
Period 1/2 (75) 8:00 - 9:15	Period 1/2 (75) 8:00 - 9:15	Period 1/2 (75) 8:00 - 9:15	Period 1/2 (75) 8:00 - 9:15
Recess (15) 9:15 - 9:30	Recess (15) 9:15 - 9:30	Recess (15) 9:15 - 9:30	Recess (15) 9:15 - 9:30
Period 3/4 (70) 9:35 - 10:45	Period 3/4 (70) 9:35 - 10:45	Period 3/4 (70) 9:35 - 10:45	Period 3/4 (70) 9:35 - 10:45
Intermediate School Lunch (30) 10:45 - 11:15	Period 5/6 (70) 10:50 - 12:00	Intermediate School Lunch (30) 10:45 - 11:15	Intermediate School Lunch (30) 10:45 - 11:15
Period 5/6 (70) 11:20 - 12:30	Intermediate School Lunch (30) 12:00 - 12:30	Period 5/6 (70) 11:20 - 12:30	Period 5/6 (70) 11:20 - 12:30
High School Period 5/6 (70) 10:50 - 12:00	Power Block (40) 12:35 - 1:15	High School Period 5/6 (70) 10:50 - 12:00	High School Period 5/6 (70) 10:50 - 12:00
Lunch (30) 12:00 - 12:30	High School Power Block (40) 12:05 - 12:45	Lunch (30) 12:00 - 12:30	Lunch (30) 12:00 - 12:30
Period 7/8 (70) 12:35 - 1:45	Lunch (30) 12:45 - 1:15	Period 7/8 (70) 12:35 - 1:45	Period 7/8 (70) 12:35 - 1:45
Power Block (40) 1:50 - 2:30	Period 7/8 (70) 1:20 - 2:30	Teacher Time (15) 1:45 - 2:00	Assembly (40) 1:50 - 2:30
Teacher Time (30) 2:30 - 3:00	Teacher Time (30) 2:30 - 3:00	Staff Meeting (60) 2:00 - 3:00	Teacher Time (30) 2:30 - 3:00



### Power Block Schedule

	Grade 7	Grade 8	High School
Mon	Motivational Mondays	Motivational Mondays	OP
Tues	Learning Logs	Advisory	Advisory
Thurs	DAWGS	Learning Logs	DAWGS
Fri	Advisory	DAWGS	DAWGS



Skylar Lickle the new breed charging BIG waves! Photo: Brett Lickle/Jaws



## CORNERSTONE MORTGAGE

*Looking to Buy or Refinance? We Can Help You!*

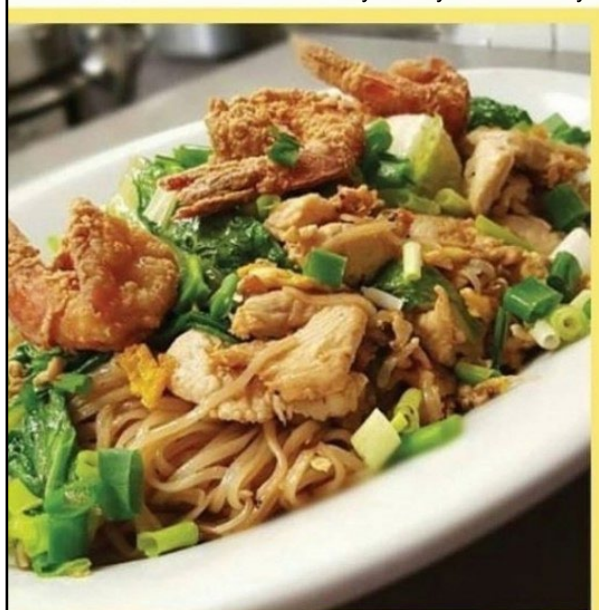


**Manny Diaz**  
Loan Originator  
(808) 638-4849  
mdiaz@cornerstone.us.com  
www.cornerstone.us.com  
NMLS ID: 451036



Cornerstone Equity Group, Inc., dba Cornerstone Mortgage is an equal opportunity lender. Licensed as a Mortgage Loan Originator Company by the HI Department of Commerce and Consumer Affairs, license number HI-340311. This is not an offer to lend. NMLS ID: 340311 and 1669660.

rajaneer  
thai cuisine  
at Hale'iwa Store Lots  
10% off Lunch (before 4pm)  
Tuesday-Friday Dine-In Only



*Celebrating 25 yrs.*

**Local Community Market  
ORGANIC & Local Produce,  
Artwork, Crafts & Food**

**SATURDAYS: from 8:00 am - 2:00 pm  
Across from famous "Banzai Pipeline"  
Surf Beach and Ehukai Beach Park at  
Sunset Beach Elementary School  
www.northshorecountrymarket.ngo**





# BANZAI NORTH SHORE WIRELESS

## BIG WAVE SEASON IS UPON US

As of this writing no big waves yet, not even a substantial swell to wow us. But Big Waves are right around the corner. The Women's Waimea Bay Championship and the North Shore Menehune start in October. Time flies! Groms and Moms take the stage as we pray for surf for all the events on our world renown shores. October 1st starts the only Big Wave event for Women only in the islands and we are hoping more events come in the future for our Wahine surfers. There are some new faces in the Women's Waimea Bay Championship. One of them a charger from Maui has been training in the big surf at Jaws and is fired up to compete. Skylar Lickle was born around water sports and does many different disciplines. Kite surfing, SUP surfing, diving, a true mermaid at heart. Her brother surfs big stuff with her. Her father was the first to windsurf Jaws and was at the helm of tow-in surfing back in the day. Her invitation to the big wave event here at Waimea Bay at the age of 18 tells the story of Women who are hard core and training for the sport and for sure there are many more to come.

Contest waiting period is October 1 through November 21st. It's not the ideal time frame for big surf as the percentage is only about 2 percent that a swell comes during that time but the Women are hopeful to get some changes made in the structure of events on the North Shore. More news coming!

## A RECORD BREAKING 55 NATIONS AT ISA WORLD SURFING GAMES

In Miyazaki, Japan 240 athletes from 55 nations gathered to celebrate the inauguration of the 2019 ISA World Surfing Games presented by Vans. Let the ceremonies begin! The athletes hailing from all continents of the globe kicked off the festivities with the Parade of Nations and the legendary Sands of the World Ceremony. The event was historic as it will be the first to directly qualify athletes for the Tokyo 2020 Olympics. "As the first edition of the World Surfing Games to qualify athletes for the Olympics, this is an incredible, historic time for the sport," said ISA President Fernando Aguerre. 24 years ago Olympic Surfing was a crazy dream. But everything starts with a crazy, impossible idea to make a dream become a reality. We've now brought surfing to the greatest sporting stage, the Olympic Games. The USA team is represented by Courtney Conlogue, Carissa Moore, Kelly Slater, Kolohe Andino, Connor Coffin

and Carolyn Marks. The International Surfing Association (ISA), founded in 1964, is recognized by the International Olympic Committee as the World Governing Authority for Surfing. At the games typhoon slid by the competition so it was raging and exciting. It was team Brazil taking the gold in the team division, USA silver, Japan Bronze and Peru Copper. Brazil's Italo Ferreira won individual gold and it was Sofie Mulanovich from Peru winning her gold. Check it all out at ISA.org.

## HONOLUA BLOMFIELD VICTORIOUS IN LONG ISLAND NEW YORK

Honolua Blomfield won the 2nd LB event on the WSL tour in New York City and now is tied in the rankings. Surf started out with some power and some longboard sliding and even some power surfing to mix it up. Swell came from hurricane Dorian so it was a fast up and down one. It was nose riding that scored the highest on the final day when the surf was pretty tiny by Hawaiian standards. It was an all Hawaii take as Honolulu's Kaniela Stewart was also victorious. Nothing better than the Hawaiian flag flying on the beach in Long Island New York! Congratulations! The world titles are coming up soon in Taiwan. For more info [worldsurfleague.com](http://worldsurfleague.com)

## TRASHY PHOTO CONTEST

This is a challenge. Surfrider is putting on a trashy photo contest. Yes you heard right, trashy! Its the 3rd annual Found Objects photo contest. All ya gotta do is find some trash on the beach. Of course clean it up off the beach! Arrange the trash in an artistic creative way and post your photo and a story about it. The contest goes on until October 31st. To submit the entry post to your instagram or twitter account, write your story, and then tag@surfrider and use the hashtag #SurfriderFound to be entered in the contest. Hey even if you don't want to enter go to the beach and pick up some trash!!! The earth needs some help!

**If you have a story or some information to pass on to us, send to: [banzaib@hawaii.rr.com](mailto:banzaib@hawaii.rr.com)**





The Friends of Ali'i Beach Present:



**THE 43rd ANNUAL NORTHSHORE  
MENEHUNE SURFING CHAMPIONSHIPS  
OCTOBER 19<sup>th</sup>, 20<sup>th</sup>, 26<sup>th</sup>, 27<sup>th</sup> 2019  
HALE'IWA, ALI'I BEACH PARK**

- \*TIME:** 8:00 A.M. Please Come Early
- \*ENTRY FEE:** \$30.00 (ENTER ONE DIVISION ONLY) All contestants receive a contest t-shirt, lunch, goodie bag & other cool prizes
- \*DEADLINE:** Postmarked by OCTOBER 1<sup>ST</sup> NO LATE ENTRIES!!!  
Drop @ Surf and Sea Hale'iwa by: OCTOBER 5<sup>TH</sup>  
Please sign-up early, space is LIMITED..we will be accepting entries on a "FIRST COME, FIRST SERVED" basis. Slots could fill PRIOR to the deadline. Once we are FULL entries will no longer be accepted.
- \*MAIL TO:** Menehune Surf Contest P.O. Box 507 Hale'iwa, HI. 96712
- \*MAKE CHECKS PAYABLE TO:** FRIENDS OF ALI'I BEACH, INC.
- \*INFORMATION:** Contest Hotline: (808) 637-2544 (alii) @ 7am  
Listen to Surf News Network @ 7am
- \*WEBSITE:** [www.northshoremenehunesurfcontest.com](http://www.northshoremenehunesurfcontest.com)
- \*EMAIL:** [ivykaii@live.com](mailto:ivykaii@live.com)
- \*INSTAGRAM:** MENEHUNE SURF CONTEST

------(Detach and Mail)------(Please Print CLEARLY)-----

Name of Keiki: \_\_\_\_\_ Phone: \_\_\_\_\_

Address: \_\_\_\_\_ City/Zip: \_\_\_\_\_

BirthDate: \_\_\_\_\_ Age On OCTOBER 19 2019: \_\_\_\_\_

SurfBoard Sponsored: YES\_\_ NO\_\_ Email: \_\_\_\_\_

PARENT PRINT: \_\_\_\_\_

PARENT SIGNATURE: \_\_\_\_\_ DATE: \_\_\_\_\_

\*The above signed parent or guardian and the participant release The Friends of Ali'i Beach, its officers, contest staff, event sponsors, The City & County of Honolulu and the State of Hawai'i from any and all liability arising from bodily injury or property damage sustained during this event. I have made a voluntary choice to participate in this Event. I the above signed have carefully read and understand this agreement. I understand that this release of liability which will legally prevent me or any other persons from filing suit and any other legal claim. I also agree to conduct myself in a professional sportsmanship like manner before during and after this Event. I understand that any unprofessional or unsportsmanship like conduct will result in immediate disqualification from the event. Also, the above signed, do hereby grant THE FRIENDS OF BEACH, its successors, assigns and licenses, unrestricted use of my image, my name, my personality and my voice in connection with the use of photography for any and all motion picture, promotional and commercial videos, radio and television purposes, internet, posters and/or performances thereof, including without limitation, the publicity in connection therewith.

**CONTEST DIVISIONS:** (Check ONE event only) AGE ON 10/19/2019

**KOKUA DIVISION:** Boy \_\_\_ Girl \_\_\_ (For boys & girls, ages 3-8 who need help in the water or on the beach. Non-competitive, everyone receives a trophy)

**SHORTBOARD DIVISION:** (No Boards longer than 6'6")

Boys/Girls 4-6 \_\_\_ (NO assistance) Boys 7-8 \_\_\_\_\_

Girls 7-9 \_\_\_\_\_ Boys 9-10 \_\_\_\_\_

Girls 10-12 \_\_\_\_\_ Boys 11-12 \_\_\_\_\_

**LONGBOARD DIVISION:** (boards MUST be at least 3' over surfers head, NO GUNS)

Girls 7-9 \_\_\_\_\_ Girls 10-12 \_\_\_\_\_ Boys 7-9 \_\_\_\_\_ Boys 10-12 \_\_\_\_\_

**MAHALO TO ALL OUR SPONSORS!!!**



# RED READER FOR LIFE

56-490 Kam. Hwy. #293-8935 M, W, Th: 9 - 5 pm; Tues: 12 - 8 pm; Fri: 9 - 3 pm  
Hawai'i State Public Library System www.librarieshawaii.org

## OCTOBER 2019

Major Program Sponsor: Friends of the Library Kahuku



Costume contest, games,  
prizes, and more!  
Tuesday, October 22 at 5:30 pm



**Movie: The Sun Is Also A Star**  
(PG - 13)  
in the Kahuku Cool Lab  
Tuesday, Oct. 1 at 5:30 pm  
Bring your own snacks.

**Movie: COCO**  
(PG)

Tuesday, October 29  
at 5:30 pm  
Bring your own snacks.



Tuesday, October 15  
at 5:30 pm  
**Movie: The Swan Princess: Kingdom of Music (G)**  
Bring your own snacks.



Hawaii State Public Library System is partnering with the United State Census.

Stay tuned for more Census events and information.

Census Day is  
Wednesday, April 1, 2020



and

**HALLOWEEN TREAT TOTE BAG**  
in the Kahuku Cool Lab

Bring your own fabric or choose from our selection. We will use sewing machines, a serger, and an embroider. Embroider your child's initials as time permits.

**REGISTER ONLINE, PLEASE**



**KEIKI MUSIC**

Monday,  
Oct. 7 and 21  
at 10:00 am



Wednesdays  
2:00 - 4:00 pm



**ALL FRIDAYS**  
at 10:00 am

To receive the Kahuku Library monthly program flyers, email: [KCL@librarieshawaii.org](mailto:KCL@librarieshawaii.org)



# WAIALUA FEDERAL CREDIT UNION

## HOME EQUITY LOAN

### 3.75% APR\*



CALL US (808) 637-5980 OR  
VISIT US WWW.WAIALUAFCU.COM



\*Annual Percentage Rate based on an index of 3.50% plus the monthly average of the 26 week Treasury Bill (Auction High) and may be adjusted annually each March. Please call for more details.

# BULLETIN BOARD

*vanessa li style*  
adonai salon  
north shore, oahu  
(808)953-8221

www.vanessalistyle.com  
FB/IG @ vanessalistyle  
vanessalistyle@gmail.com

**ESTRADA'S  
WE HAUL 'EM**  
Removals & Dump Runs  
Garbage-Rubbish-Trash  
Call Rick 808-216-9419



Serving the North Shore for 30 years!

**Rick Grover**  
(808) 983-9331 cell  
(808) 638-8120 office  
rick@grovermasonry.com

\*Foundations \*Driveways  
\*Sidewalks \*Retaining Walls  
\*Excavation & Lot Clearing

License # C-18302

**NORTH SHORE  
PHOTOGRAPHY**

**HALEIWA, HAWAII**

Celebrating 40+ years of Professional Photo Services  
and Historic Images to the Community.  
search: northshorephotohawaii.com

**"THE BULLETIN BOARD THAT IS IN EVERYONE'S HOME"**

# BULLETIN BOARD



Featuring the largest selection of certified organic produce on the North Shore. No panic...ours is organic. Open 7 days. Mon.-Sat. 9am-7pm. Sun. 9am-5pm

66-445 Kam. Hwy  
Haleiwa, Hawaii 96712  
Next to the Post Office  
808-637-6729 • 808-637-1922 fax

## LTC

### Laie Trucking Company, LTD

\* Ready Mix Concrete \* Recycled Aggregates  
\* Pump Service \* Hauling \* Equipment Rental

PH: (808) 293-8710 PH: (808) 293-1296  
P.O Box 121 FAX: (808) 293-2890  
Hau'ula, HI 96717 laietrucking@hawaiiantel.net

"A LOCAL COMPANY, BUILDING A LOCAL COMMUNITY"

## N-C PLUMBING & SUPPLY

Cont. Lic. No. C-8913



- RESIDENTIAL & COMMERCIAL SALES & SERVICE
- CONTRACTING & DESIGN • HOME PLUMBING SERVICE
- PLUMBING FIXTURES, HEATERS • FREE ESTIMATES

Nestor P. Calilao (Owner) Bus: 637-8662  
P.O. Box 769 Res: 638-5157  
Waialua, HI 96791 Cellular: 372-8718

## Saccoccio & Lopez

ATTORNEYS AT LAW

TRIAL LAWYERS

Serving Hawaii since 1984

637-7611

Personal Injury -Property damage  
Criminal Law - Traffic Crimes  
Landlord Tenant - Bankruptcy



KATHI LEE ALBIAR  
OWNER/BROKER - RB 17327

808-358-4139  
[KATHI@ALBIARREALTY.COM](mailto:KATHI@ALBIARREALTY.COM)  
[WWW.ALBIARREALTY.COM](http://WWW.ALBIARREALTY.COM)

SALES & PROPERTY MANAGEMENT SINCE 1993

## BOW WOW BUNGALOWS

Licensed Boarding Kennel  
North Shore, Oahu  
Reasonable Rates  
Ph. 637-2562  
*These Dogs Have Fun!*

## Munden Design & Build

Lic.#BC19632

Design • Plans • Permits • Construction  
Additions & New Residences  
808 391-8616

Providing quality work since 1978



Dale Christensen C-29856 (808) 368-1473

Got Leakz? Call Greekz!

372-1820  
Greekz Plumbing

## Greekz Plumbing

License# C-32939  
Phone 372-1820

School of Champions

Established 1966

## International Karate Federation



**IKF Waialua Dojo**  
Waialua Elementary School

Beginner classes - ages 5 & up  
Mon & Wed 5:00 - 6:00 pm  
Intermediate classes  
Mon & Wed 6:00 - 7:30 pm

Call 780-5457 or email: [wvbinz.bb@gmail.com](mailto:wvbinz.bb@gmail.com)



# North Shore Memories



COURTESY: NORTH SHORE PHOTO 1958

## ABE'S SUPPLY & SERVICE

# FARMLOVERS markets

We support North Shore Farmers.



# Hale'iwa Farmers Market

Located at Waimea Valley,  
Thursdays 2-7pm

fresh local produce \* meat \* art \* food \* music

@alohafarmlovers (808) 388-9696  
www.FarmLoversMarkets.com

Haleiwa Evangelical Mission International



Come and join us  
Sunday's at Waialua  
Elementary School Cafeteria

Sunday School at 9:00 am  
Worship Services at 10:00 am

For Prayer  
Call 637-4567  
Blessed to be A Blessing

"Children's Church"

## SUNSET BEACH FOOD BANK

at  
Sunset Beach Christian Church  
Every Tuesday 12noon - 3pm





**North Shore News  
2019 Schedule**

**PUBLICATION DATE    EDITION    DEADLINE DATE**

October 9	<b>Pets</b>	September 27
October 23	#21	October 11
November 6	#22	October 25
November 20	#23	November 8
December 4	#24	November 22
December 18	#25	December 6

**Direct-Mailed to Every Home**  
**MOKULEIA · WAIALUA · HALEIWA · KAHUKU · LAIE**  
**Every Other Wednesday**  
**12,000 copies**

"The North Shore's most popular publication" since 1970  
 (808) 780-8037 · NSNHaleiwa@gmail.com · NSN4Linda@gmail.com  
 www.northshorenews.com

**Waialua Public Library  
UPCOMING EVENTS**

67-068 Kealohanui St, Waialua, HI 96791  
 637-8286

**Used Book Sale**

Saturday, October 19, 8:30am-12:30pm  
*Weather Permitting*

**Writers' Group**

Saturday, October 12, 11am  
 Topic: "My Basic Questions"

**Readers' Group**

Thursday, October 24, 9:30-11am  
*The Guernsey Literary & Potato Peel Pie Society*  
 By Mary Ann Shaffer, Annie Barrows

**Recurring Events**

**Toddler Time** - Fridays, 10am  
**Storytime** - Saturdays, 10am  
**Computer Instruction** (*by appointment*)

**Book Sale Donations Still Needed**

Help us stock up for the last book sales of 2019. Holiday books, CDs & DVDs are especially appreciated. Bring them to the Waialua Library during regular business hours. Thank You!



**North Shore Food Bank  
@nsfoodbank**

**and**

**North Shore Service Center**  
 IHS, Alea Bridge, Catholic Charities, US Vets

Wednesday, October 2, 2019  
 Wednesday, October 16, 2019  
 Waialua Community Association  
 9:00am - 1:00pm

***give aloha***

Make a donation to our organization at any Foodland or Sack N Save checkout, and Foodland and the Western Union Foundation, will make a donation to our organization too!

Our organization code is : **78488**  
 for Once A Month Church. All proceeds will go to the North Shore Food Bank.

How to Help:

1) Show your Maika'i Card and make a donation to our organization (up to \$249 per person) at any Foodland or Sack N Save checkout from September 1-30, 2019.

2) Foodland and the Western Union Foundation will match all donations up to a total of \$320,000 for all organizations combined.

**Thank You For Your Support!**





# CLASSIFIEDS

The North Shore News is published every other Wednesday and mailed free of charge to all North Shore homes and businesses. Extra copies may be obtained at our office.

**PRESS RELEASE POLICY:** Submit press releases in person, mail or email to Editor, North Shore News, 66-437 Kam. Hwy., Suite 210, Haleiwa, HI 96712. Please type your releases and keep them shorter than 200 words unless they are of an unusual news interest. Releases should be viable news stories and are published on a **space available basis only**, with priority given to those received in our office first. You may attach photos. We are not responsible for the return of any photos. All materials are submitted at owner's risk. We reserve the right to edit and/or refuse all submissions including advertising.

**EDITORIAL POLICY:** We welcome articles and letters from our readers. Letters to the Editor are published on a space available basis only and preference is given to shortness of length, and quality of content. We prefer to run not more than one letter, per person, per 6 month period. Letters subject to edit.

Views expressed by our contributing writers and advertisers do not necessarily reflect the view of the management and staff of the North Shore News. All rights reserved. Reproduction in whole or part without permission is prohibited. © 2019.

**Editor & Classifieds**

Linda Seyler

**Typography**

Downtown General Store

**Contributing Writers**

Tom Jacobs  
Betty Depolito

State Representative Lauren Matsumoto  
Senator Gil Riviere  
Councilmember Heidi Tsuneyoshi

**Photography**

Banzai Productions



Please recycle this newspaper.

**SERVICES**

**SHORE ELECTRICAL SERVICE**  
New Const-Remodels  
638-0049 / Lic#C20777

**Computer Problems?**  
I can fix any MAC or PC.  
Chris 371-3089

**Andres Plumbing**  
All your plumbing needs  
808-256-7337 Lic#C24500

**Mobile Notary Public**  
Commission # 17-342  
Call or text (808) 351-4405

**COUNTRY WELDING**  
Trailers, security gates, railings,  
truck racks, custom and repair  
(Heavy Equipment)  
ALUMINUM/STAINLESS/  
GALVANIZE  
Ryan (808) 226-6939

**ALOHA COMPUTER**  
PC/MAC Repair/Virus  
Removal  
MOBILE COMPUTER  
REPAIR SERVICE  
372-2667

**LEARN TO SWIM**  
AT THE  
**HAWAII SWIM**  
**SCHOOL**  
ON THE NORTH SHORE  
Developing swimmers since 1982  
Haleiwa Rd. at Smiley Place  
637-4863

**Pet Sitting North Shore**  
Over Nights/  
Pet Walk Services  
\$10 Off for New Clients  
Booking now for Summer!  
343-7146 Emilie

**Paumalu Electric Inc.**  
C 18074

Residential & Commercial  
New Installation & Repairs  
Renovations. Remodels  
Electric Meter Replacements  
Dave Hancock 638-9054

**Hawaii Tree Co.**  
Trimming & Removal  
Professional-Reliable  
Free Estimates  
462-2749

**Radiant Skin Care & Waxing**  
Aynjul Benigno  
Licensed Esthetician  
Call or Text 808-222-8124  
radiantskincareandwaxing.com  
66-935 Kaukonahua Rd.,  
Waialua

**Sacred Journey**  
**Healing Therapies**  
No Botox-No Filler-No Surgery  
Hawaii's Expert Holistic Esthetician LE  
Call or Text 808 954-1032  
66-216 Farrington, Waialua  
59-712 Kamehameha Hwy.  
Instagram:sacred\_journey\_healing

**CS EuroCars Kapolei**  
**Mercedes Repair Shop**  
with low labor rates  
ASE Certified Technician  
27 years experience  
2116 Lauwiliwili St. Unit 104F  
Kapolei, HI 96707 - Under New mgmt.  
808-682-1957

**GERMAN CAR SERVICE**  
Professional-Qualified  
Technician  
Call Gary  
637-6800

**DOG/CAT NAIL**  
**TRIMMING**  
At your home- only \$20.  
Call 808-388-5336

**BIKRAM YOGA**

**Saturday 7am class!**  
www.bikramyogahawaii.com  
Please call for class schedule  
**637-5700**

**HARVEY'S TOWING LLC**

24 hr Towing Service  
Lockouts, Jumpstarts &  
Recovery. Specializing in  
opening locked car doors.  
Call anytime 478-0333

**Your Clean Home**  
**Vacation/Residential**  
**Home Cleaning & Laundry**  
Affordable • Reliable  
• Green Cleaning  
**For Free Estimate**  
Call 728-5035

**WHY KNOTT**  
**FLORIST**  
**Waialua Shopping**  
**Center**  
**637-9380**

Private Fitness Training/Yoga  
I Come To You!  
808-282-8995  
www.evolvefitness.com/  
mabelle.lee@gmail.com  
Kupuna Discounts

**North Shore Mobile**  
**Detailing**  
•Cars.Trucks.SUVs.Boats.RVs.  
Motorcycles.  
•Call/Text for a free estimate  
•We come to you!  
(808) 635-6631



Like us on Facebook:  
Facebook.com/  
NSNewsHaleiwa

**HOW TO CONTACT THE NORTH SHORE NEWS**

Letters to the Editor, and other items submitted for publication consideration may be sent to us via:

MAIL: 66-437 Kamehameha Hwy., Suite 210, Hale'iwa, HI 96712

E-MAIL: NSNHaleiwa@gmail.com

PHONE: (808) 780-8037

Office Hours: Monday – Friday 10 a.m.-2 p.m.

www.northshorenews.com

# CLASSIFIED ADS

**Next Issue - Oct. 9, 2019**  
**Deadline Date - Sept. 29, 2019**

**NOAA Stranded,  
Entangled  
Injured Sea Turtles**  
(808) 725-5730

**OFF da ISLAND**  
Are you leaving Oahu on vacation or business? Do you live on a neighbor island, the mainland or foreign country and subscribe to the North Shore News? Send us a photo of someone in front of a sign or landmark holding a copy of the NSN. Email your photo along with the person or persons' name, community of residence, telephone number and photo location to: NSNHaleiwa@gmail.com.

**Classified Ad Rates**  
3 lines (min.) \$18.89  
4 lines \$25.13  
5 lines \$32.45  
1" Box Ad \$41.88  
(27 characters in each line)  
Include your contact information.  
*\*Ads can be dropped off in mail slot, mailed, or emailed. Pay by check payable to: North Shore News or credit card by phone order.*  
We reserve the right to refuse any advertisement with a full refund.  
North Shore News • 66-437 Kam. Hwy., Suite 210, Haleiwa, HI 96712  
(808) 780-8037 • NSNHaleiwa@gmail.com

**FREE ADS**  
Garage & Yard Sales,  
Reunions, Lost & Found.  
Email ad to:  
NSNHaleiwa@gmail.com



**Marianne Abrigo, Properties**  
Specializing in -  
North Shore  
Real Estate  
Ask for our list of available properties and/or a free market analysis.  
**Marianne M. Abrigo**  
"Realtor since 1974"  
Office **637-3511**  
Fax **637-0777**  
Email **mabrigo222@aol.com**

## FOR RENT

**TABLES & CHAIRS**  
Call North Shore News  
780-8037  
All proceeds go to the North Shore Food Bank

## HELP WANTED

Live-in multi pet sitter w/ groomer experience in Pupukea. Salary neg. References required  
638-7073

Must be clean, dependable, M,TU,TH,FR, 7a-12p  
Manager promotion possible for a person with management skills and training. Please leave a contact phone number  
637-8155

**Household Help**  
Beachfront Estate  
16 hours/week  
808-637-0808

Part-time nursery assistant needed at Hibiscus Lady Nursery, 3 weekday mornings a week.  
Call for info.  
637-9995

**Retail Sales  
Surf & Sea**  
Hawaii's Ocean Sports Headquarters is always looking for hard working, energetic people to become a part of our sales team. Good pay, bonus, benefits. Japanese speaking a plus. Ocean sports experience and dive instructor wanted. Please contact surfnsea@surfnsea.com for details.  
Apply in person daily 9am-7pm  
62-595 Kam. Hwy., Haleiwa

**MATSUMOTO SHAVE  
ICE**  
Now Hiring!  
Apply in person daily  
9am-4pm  
808-637-4827

## MISCELLANEOUS

**Vampire Season  
Donate Blood**  
Laie Shopping Center  
Saturday October 19, 2pm -6pm  
Blood Bank of Hawaii  
bloodbanktough.org

FREE Wooden Pallets  
Good Condition  
See Bernie at the  
Waialua Community  
Association  
office 9am-2pm  
637-4606

Correction: October 14, 2015 -  
Waiale'e Industrial School for  
Boys May 13, 1902- (around)  
1945- Last of the boys of the  
reformatory school in Hono-  
lulu, 68 in all, were moved to  
the new buildings at Waiale'e

**Adult Sewing Classes at the  
Waialua Comm. Asso.**  
-Beginners Classes for Fall  
Bag Making Sewing Classes Series  
Tuesday evenings 7-9pm  
Sept 17- Nov 5  
-Intermediate/Advanced Classes  
Friday mornings 10am-12pm  
Sept 20-Oct 25  
-Membership to WCA required  
\$10. yearly, sign-up at the WCA  
office 9am-2pm  
-Class fee \$10/day  
Please contact Nonette for more  
information: 225-9421  
nonetteu@gmail.com

**North Shore News  
Pet Issue**  
Deadline September 27  
Send your "pet(s)" picture  
with a caption to:  
NSNHaleiwa@gmail.com  
to be featured in the  
October 9 issue

**43rd Annual North Shore  
Menehune Surfing  
Championships  
Registration Form**  
See page 16

**Hawaiian Earth Recycling  
(HER)**  
682-5895 to inquire about the  
availability of Free mulch.  
65-1011 Wilikina Dr, Wahiawa

**Parkinson's Group Meeting**  
Group meets at the Waialua  
United Church of Christ on the  
1st Saturday of every month.  
Friends & Family Welcome  
Next meeting Oct 5 @10am  
manshoj001@hawaii.rr.com

**North Shore Country  
Market**  
Welcome New Vendors  
Only \$15 Space Fee  
Info online  
NorthShoreCountryMarket.  
NGO

**North Shore Christian  
Fellowship**  
Ohana Produce Distribution  
Friday, Sept. 27 10am  
Waialua Community  
Association

**Vegan Skin Care &  
Nutrition**  
Looking for health minded  
people for our team that is  
expanding on Oahu.  
Work part time from home with  
potential to earn a corporate  
income within a year.  
Call Kathy (808) 223-5392

**BUSINESS SERVICES CENTER**  
Fast & Convenient Copy, Fax, Scan,  
Computer/Internet, Laminate, & More  
**Across from  
the Haleiwa  
Post Office**  
**637-4558 • gonorthshore.org**  
**#gonorthshore**

**North Shore Serenity  
AL-ANON**  
6:30 - 7:30pm Wednesdays  
St. Michaels Church  
Cottage in back of Church

Would you like to get the  
North Shore News via  
email in color! Just send  
us a message at:  
NSNHaleiwa@gmail.com  
and you get the NSN  
online every two weeks!

**Waialua Farmers Market**  
Saturdays, 8:30am - 1pm  
Historic Waialua Sugar Mill



# Take Steps Towards Wellbeing with Rehab Services at KMC



**K**ahuku Medical Center is pleased to provide comprehensive rehab services for the community:

### Physical Therapy

- Services to help restore function, improve mobility, and relieve pain so patients can return to their home and work activities safely

### Occupational Therapy

- Both inpatient and outpatient care

### Speech Therapy

- Adult clinical and pediatric outpatient services

Appointments offered  
Monday – Friday,  
8:00 a.m. - 3:30 p.m.



# Kahuku

MEDICAL CENTER

*Friends and Family Taking Care of Friends and Family*

www.kmc-hi.org | 808-293-9221