



"E Ala Na Moku Kai Liloloa"

In This Issue:

Waimea Valley
Summer Events
Page 3

News from the NS
Neighborhood Board
Page 9

Home Improvement
Pages 10-15



Betty Lou Sakura Johnson wins Local Motion Surf into Summer

NORTH SHORE NEWS June 19, 2019 VOLUME 36, NUMBER 11



Race start at Waimea Bay

North Shore 2nd Annual KAUWELA KAI Paddle Race

This 4.5 downwind course started at Waimea Bay and finished at Hale'iwa, Ali'i Beach Park. Prone, SUP, OC1, OC2, OC3, OC4, surfski and V1 were all a part of this race. Conditions were beautiful but challenging with 2-3 foot surf along the

coastline. This made for an exciting race and finish. Congratulations to all competitors on an awesome race. Mahalo Nui to our sponsors Michelob Ultra, Hurley, Banzai Bowls, Billabong, Hawaiian Water Patrol, Restaurant 604, SunBum,

North Shore Lifeguard Association, Hydro, Kono's, Hicon and Surf N Sea. Mahalo to all for supporting The Friends of Ali'i Beach, The Menehune Surf Contest and Operation Backpack.

See event results on page 16

PERMIT NO. 1479 HONOLULU, HI PAID U.S. POSTAGE ECRWSS PRSRT STD	RESIDENTIAL CUSTOMER *****ECRWSSSEDDM*****
--	---

Proudly Published on the
North Shore of Oahu
Home of the
2019 Operation: Backpack
See Page 6



OFF da Island in Fort Drum, New York

David and Ann Von Almen of Haleiwa are pictured here in Fort Drum, New York where they visited their son. The Von Almen's are newcomers to the North Shore and wanted to be part of the North Shore News OFF da Island campaign!

Please register Online - Limited Seats Available
https://www.memberplanet.com/s/honoluluunavyleague/2017pacRtsoy_1_1_1

Hawai`i VETERANS Summit

Hawai`i Convention Center
 1801 Kalakaua Ave | Honolulu, HI 96815

Register Now

June 21 & 22, 2019

More information at
<https://hawaiiveteransfoundation.org>
 or contact us at
2019summitinfo@gmail.com

The Hale`iwa Family Dental Center, Ltd.

- Adults and children
- Most cases completed in 4-12 months
- Clear braces available
- Lower cost
- University tested
- Used for over 20 years

Produced by Todd R. Okazaki and Staff

"Straighten those crooked teeth that have bothered you for years"

Conveniently located behind First Hawaiian Bank in Historic Hale`iwa Town
 Call 637-9652 for your reservation



FREE Screen on the Green Movie Nights

Every Thursday June 6 – July 25, 7:15pm on the Main Lawn

FREE family-friendly outdoor movies for all ages after the Hale'iwa Farmers' Market! Visit waimeavalley.net for full schedule of all films



DINNER CATERED BY
KE NUI KITCHEN
FRESH REGIONAL CUISINE | EVENT CATERING | PRIVATE CHEF EXPERIENCES

Dinner & Moon Walk

Fridays June 14 & July 12, 6pm at the Proud Peacock

50% OFF moon walk admission with all dinner reservations!
Experience the moonlit Valley at night ... Pricing and online reservations at waimeavalley.net



Father's Day Barbecue

Sunday June 16 at the Pikake Pavilion

FREE same-day Waimea Valley admission with all brunch reservations ... More details and online reservations coming soon at waimeavalley.net



SUMMER CONCERT SERIES
HO'I HOU MAI | WAIMEA RETURN TO THE VALLEY
HOSTED BY MELE APANA & SHANNON SCOTT

7th Annual Summer Concert Series

Saturdays June 29, July 27, & August 31 on the Main Lawn

Join us this summer as Hawai'i's best local artists and hula performers return to the Valley! Presale tickets on sale exclusively at waimeavalley.net



WAIMEA VALLEY
HI'IPAKA LLC

ON THE NORTH SHORE ACROSS FROM WAIMEA BAY

OPEN 7 DAYS A WEEK, 9AM - 5PM

@WAIMEAVALLEY  

CALL: (808) 638-7766

@WAIMEAVALLEYOAHU 

WHERE HAWAII COMES ALIVE

WAIMEAVALLEY.NET


HALEIWA ARTS FESTIVAL

MANY MAHALOS!

On May 25th, patrons of the arts came out to enjoy **The Art of Aloha** fundraiser at Dillingham Ranch. The Gala was to benefit the 22nd Annual Haleiwa Arts Festival coming up on July 13 & 14 at Haleiwa Beach Park.

A champagne reception and the music of Brenda Burnett on the lanai coupled with the Silent Auction and Culinary Arts from local chefs from Ke Nui Kitchen, Maya's Tapas and Wine, The Cosmic, Silva Events and Roy's. It was a sensory overload! Gina and her Big Band wowed the audience with non-stop music - the dance floor always full up front!

Special Mahalos to Kona Brewery for their generous support, Uncle's Ice Cream and Up Country Creations for desserts. Thank you to Milton from the Soundmen, Otis Schaper and to the Board of Directors of Haleiwa Arts Festival.

Many Mahalos to all that attended, to those who donated to our Silent Auction and all our volunteers to include: Carlos Mozo, Dawn Dasilveira, Lynne Egensteiner, Rebecca Green, Nicky Salisbury, Ethan Hutchins, Carole Ward, Kalen Huntmer, River Maguire, Polly Kia, Torrey Locke, Jamie Morro, Soffia Graves and The North Shore News.



COMING SOON:

22ND ANNUAL
HALEIWA ARTS FESTIVAL
 JULY 13/14
 HALEIWA BEACH PARK

ART • MUSIC • FOOD • FUN • FRIENDS • FAMILY • FREE!

The Haleiwa Arts Festival is a 501(c) 3 tax-exempt organization. All contributions are tax deductible in accordance with Federal law.



**Councilmember
Heidi
Tsuneyoshi**
Serving You in District 2

A few months I introduced Resolution 19-20, which requested the Governor of the State of Hawaii to declare a state of emergency for Kamehameha Highway from Kahalu'u to Laniakea due to the severe shoreline erosion. This would allow for expedited repairs of the heavily-utilized roadway resulting in piece of mind for drivers that the road is safe. Following City Council adoption of the resolution, my office has been working with the Department of Transportation to convene an informational community meeting to get input from residents about their concerns with the highway. DOT has been a great partner with regard to improving the condition of the highway and their willingness to work collaboratively to determine the best course of action moving forward. I believe this is the right step forward to preserving our shoreline and the ensuring motorists are able to safely travel on Kamehameha Highway.

Public Schools Offering Free Meals to Children this Summer

HONOLULU – The Hawaii State Department of Education (HIDOE) today announced 71 public schools will serve meals through its summer food service program, Seamless Summer Option (SSO).

“The Department is excited to see an increase in the number of schools that have stepped up to feed our keiki this summer. This is typically a period of time where our most vulnerable students do not have access to services that they normally would during the school year,” said Dann Carlson, assistant superintendent, Office of School Facilities and Support Services. “Our hope is that more students will enjoy a free meal, simply by stopping by one of our participating schools.”

Beginning in early June, the SSO program will be available at public schools around the state free of charge to all children 18 years and younger. Meals will be served at select locations Monday through Friday, except June 11 (King Kamehameha Day) and July 4 (Independence Day). Parents are encouraged to call their child’s school directly to find out the specific times for meal service.

List of Schools: Hauula Elementary, Laie Elementary, Kahuku Elementary, Kahuku High & Intermediate and Waialua Elementary



*Councilmember
Heidi Tsuneyoshi*

invites you to attend an informational meeting to discuss community concerns on the condition of Kamehameha Highway

Wednesday, June 26, 2019
6:00 - 8:00 pm

Hau'ula Elementary School
Cafeteria

Free Beef Stew and Rice!

Special Speaker
DOT Deputy Edwin Sniffen



For more information, call (808) 768-5002.

• SPONSORED BY COUNCILMEMBER HEIDI TSUNEYOSHI •

ALOHA Waialua Town!

PAALAA KAI BAKERY
Discover a local bakery full of signature sweet treats

Have you ever wrapped your lips around the 3 choice treats below?

**Bearclaw
Ensamada
Chocolate Croissant**

BUY ANY 1 OF THE ABOVE LIST AND GET 15% OFF



BUY ANY 2 OF THE ABOVE PRODUCTS AND GET 20% OFF or BUY AT LEAST 1 EACH OF ALL THREE AND GET A HUGE 25% OFF YOUR ENTIRE PURCHASE

www.pkbsweets.com

This offer is valid between June 19 - July 2, 2019. Cannot be combined with other promotions or daBest VIP club discount.

2019 OPERATION: BACKPACK!



HERE'S HOW
YOU
CAN HELP!

A monetary donation will sponsor a NEW backpack LOADED with school supplies!

This year the Operation: Backpack team will be working with area schools to distribute backpacks to students in need.

Send donations to:

North Shore News 66-437 Kam Hwy #210 Haleiwa, HI 96712 or
Once A Month Church PO Box 117 Haleiwa, HI 96712.

Donations can also be dropped off at the NSN office, NS Chamber of Commerce (10a-5p) or WCA (9a-2p). Please call before dropping off donations at NSN. For more information or credit card donations call Linda at (808) 780-8037.

Needed Supplies: composition books, Elmer's glue, #2 pencils, erasers, sharpies, colored pencils, Crayola markers and crayons, pens, scissors, rulers, school supply cases, watercolors, 3 ring binders, folders, scotch tape, index cards, glue sticks, plus age/grade specific items.

Sponsored by North Shore News and Once A Month Church - Mahalo!



Laie-handcart-trekking: Youth from Laie and West Maui join in manhandling a two-wheeled handcart up a steep hill in Ma-laekahana mauka. The 19th century human powered conveyances was designed to be pulled from the front and pushed from behind. (Holladay Photo)

Laie Latter-Day Saint Youth Trek For Faith

LAIE, Hawaii— Approximately 180 youth plus leaders from the Laie Stake of The Church of Jesus Christ of Latter-day Saints celebrated the 1919-2019 centennial of the Laie Hawaii Temple in part by reenacting a handcart trek during their June 4-9 conference. The Laie Latter-day Saints also invited 120 youth and their leaders from the Kahului West Maui Stake to join the faith-promoting adventure.

Such youth treks derive from a sub-group of 1846-1868 “Mormon pioneer” migration across the American plains to Utah: Lacking funds to purchase covered wagons and draft animals, approximately 3,000 of those faithful pioneers are still highly revered for making the difficult 1,000-plus-mile journey in handcarts between 1856-1860.

"We tried to take them on a journey to learn about our pioneer roots and help them remember some of the experiences and sacrifices those pioneers made so we can be grateful for our heritage," said Arapata Meha, Laie Stake young men's organization president.

YOUR HOMETOWN BAKERY



"Da Best"

Located right in Waialua

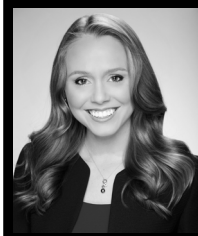
Learn more online

www.pkbsweets.com

**Exclusively at PKB
Cinnamon Finger Puffs**



**Available on Tuesdays, Wednesdays and Thursdays
Limited Production**



**Representative
Lauren
Matsumoto
Serving You in District 45**

Aloha Friends and Neighbors!

Hurricane season is back and runs from June through November. Are you and your family ready if a storm hits Hawaii? Although we don't know how many storms will affect Hawaii, you should be fully prepared in case one strikes! You can visit RepMatsumoto.com for a list of suggested items to help prepare you for a disaster, but here are some helpful resources my family and I are using and steps we're taking to make sure we're ready:

Be Informed

The Honolulu Department of Emergency Management website at www.honolulu.gov/dem as well as the State of Hawaii Department of Emergency Management website at dod.hawaii.gov are both convenient resources to find sample preparation plans, review evacuation maps, and receive emergency notifications!

Plan

Make sure you have a plan before authorities issue a Hurricane Warning. A Hurricane Warning means we have less than 36 hours to finish hurricane preparations or, if instructed by authorities, evacuate the area. A day and a half can go by quickly, so make sure you have what you need and a plan in place before you get the warning. Start storing items such as food and water today.

Prepare

An emergency plan is only as good as putting it into practice, so make sure you take the time to purchase your supplies and have necessities on hand in the event of a hurricane. To prepare your home, please consult the Homeowner's Handbook to Prepare for Natural Hazards – a free publication that can be accessed on line at <http://seagrant.soest.hawaii.edu/homeowners-handbook-to-prepare-for-natural-hazards/>

The Red Cross suggests having the following items:

- Water and non-perishable food for 14 days
- Copies of personal documents
- Flashlight
- Cell phone with chargers
- Battery-powered or hand-crank radio
- Emergency contact information
- Extra batteries
- Extra cash
- First aid kit
- Emergency blanket
- Medication (14-day supply)

- Maps of the area
- Multi-purpose tool
- Tools/supplies for securing your home
- Personal hygiene items
- Extra set of car and house keys
- Extra clothing
- Insect repellent and sunscreen

Make a plan for your pets as well! Find pet-friendly housing on your evacuation route. If you stay home, ensure your pets are indoors and unable to escape. Prepare an emergency kit for them including food and water bowls, vet records/contacts, food and water, litter/box/waste bags, medications, leashes, and collars.

And don't forget about fun things too! Books, board games, or a battery-powered laptop or DVD player will help you pass the time indoors. Go to RepMatsumoto.com for a comprehensive list of items you may need in the event of a natural disaster or www.redcross.org/get-help for helpful guides and other information to help you prepare for emergencies. Don't let a storm turn into a disaster. Be informed, plan, and prepare so that you and your family will be safe this hurricane season!

As always, please feel free to contact me if you have questions or concerns about any happenings in our community. Call me at (808) 586-9490, email RepMatsumoto@Capitol.Hawaii.gov, or visit RepMatsumoto.com.

EVERYONE WELCOME



HALEIWA JODO MISSION

66-279A Haleiwa Road

(808) 637-4382

haleiwajodominionyba@gmail.com

Buddhism 101 Series

July - O-Bon Basics

Learn About the Significance O-Bon

Sunday, July 7

9:45 a.m. - Introduction to Temple

10 a.m. - Church Service with presentation by Rev. Ezaki on O-Bon Basics

Light Refreshments to Follow

BON FESTIVAL

Friday, July 19

6:00 p.m. - O-Bon Service

8:00 p.m. - Bon Dance

Saturday, July 20

6:00 p.m. - O-Bon Service

8:00 p.m. - Bon Dance

9:00 p.m. - Lantern Floating

Sunday, July 21

6:00 a.m. - Beach & Park Cleanup

News from North Shore Neighborhood Board #27

Elected Board Members

Here are the results of the North Shore Neighborhood Board Election:

Mokuleia Sub-District 1:
Kathleen Ells and Thomas Shirai

Waiialua Sub-District 2:
Maka Casson-Fisher, John Hirota,
Tehani Louis-Perkins, Kathleen Pahinui

Haleiwa Sub-District 3:
Racquel Achiu, Leif Andersen, Mike Lyons,
Carol Philips

Kawailoa Sub-District 4:
Bob Justice

Sunset Sub-District 5:
SharLyn Foo, Bob Leinau, Blake McElheny,
Boyd Ready

Your newly elected board members thank you for your support and look forward to representing you in the next 2 years. The new board will take office at the July 23, 2019 meeting.

We want to thank Andrew Green, Casi Gentzel, Henry Courtenay, and Bill Martin for their service in representing their communities for the past couple of years. Mahalo to everyone who ran – community engagement is important!

At the May 28, 2019 Board meeting, the board supported a request to rezone property 66-815 Kaukonahua Rd by the Mormon Church from Ag-1 to Ag-2 for 2 homes and farming. The board heard a presentation from Phil Acosta on the North Shore Point in Time. Also an update regarding the changes at Wahiawa General Hospital. They will be closing their surgical unit and providing care for those with substance and mental issues.

At the June 25, 2019 meeting of the North Shore Neighborhood Board, we will hear a recap of the community meetings for Wailee and next steps as well as an update on the Waiialua Beach Rd bike path extension. There will also be reports from the City and County, HPD, HFD, and city and elected officials, time permitting.

Sign up for minutes and agenda the meetings at: <https://www.honolulu.gov/esub/email-subscribe-nc> or call Kathleen at 637-8545 for more information or any questions.



Royal Hawaiian Band

Sunday, July 7, 2019

4 p.m.

Waiialua Bandstand

Bring your mats and lawn chairs and enjoy the show!

www.waiialuabandstand.com



Polynesian Treasures

Hawaii's largest selection of Polynesian handicrafts and Hawaiian inspired gifts.

North Shore Marketplace * Haleiwa, Hawaii
Open daily from 10 am * (808) 637-1288



Celebrating 25 yrs.

**Local Community Market
ORGANIC & Local Produce,
Artwork, Crafts & Food**

SATURDAYS: from 8:00 am - 2:00 pm
Across from famous "Banzai Pipeline" Surf Beach and Ehukai Beach Park at Sunset Beach Elementary School
www.northshorecountrymarket.ngo



North Shore Chamber of Commerce News

New Member Highlight: Lush Palm Landscapes

Lush Palm Landscapes is a North Shore-based landscaping company that specializes in designing and installing tropical gardens in residential homes. Owner and designer Brent White explains, "In Hawaii we are so fortunate to see a rich variety of tropical plants that surround us every day. It's incredible how a native Hawaiian garden encompassing your home can transform an environment and add value to your property."

Brent, born and raised on the North Shore, grew up surfing and sharing his family's passion for preserving our community. He began his career doing web design and volunteering for local non-profits. He also found his occasional gardening jobs to be a fun and creative outlet for him, and the idea for Lush Palm Landscapes began. "Gardens are the grand introduction to your home, and plants provide a natural and unique character to your residence," says Brent.

Lush Palm Landscapes creates gardens with native-flowering plants, exotic palms, colorful crotons, pathways, lawns, aquascapes, lighting, and more. To schedule a free consult with Brent, call 808-352-3439. View some of Lush Palm Landscapes completed projects showcasing Brent's designs at www.lushpalmlandscapes.com.



Brent White and William Slattery of Lush Palm Landscapes

Quality Tile Crafts

"No job too big or small!"

Specializing in Ceramic Tile,
Travertine, Marble, & Slate

Kevin Wilson

cell (808) 864-4985 office (808) 638-8492
www.QualityTileCrafts.com Free Est.



SEAMLESS ALUMINUM & COPPER RAINGUTTERS
IN HOUSE SHEET METAL WORK

"Let us Protect your Castle"

John Manning, President

P.O. Box 84 Email: gutterking808@outlook.com
Waialua, HI 96791 Website: 808gutterking.com
Ph: (808) 621-5115 License: C-23936

Located in the Waialua Sugar Mill

Hawaiian Lumber LLC

Blow out sale on Saturday, June 22

Reclaimed local hardwoods available

Monkey Pod/Eucalyptus/Silky Oak

- various sizes of live edge slabs

- tables, coffee tables and benches

in stock

808-371-1331

Located at the Waialua Sugar Mill



A proud history of innovation...now available at all Pioneer locations



Pioneer Ace Hardware

930 Kilani Ave
Wahiawa, HI 96786
(808) 622-7001

Pioneer Ace Hardware

66-134 Kamehameha Hwy
Haleiwa, HI 96712
(808) 622-7002

Pioneer Ace Hardware

55-510 Kamehameha Hwy
Laie, HI 96762
(808) 622-7003

3 Pro Tips for a Stress-Free Remodel

The idea of remodeling your home can bring with it a certain amount of stress. That said, there are some steps you can take to make sure your project goes smoothly.

1. Planning - Avoid unexpected surprises. Every good project starts with proper planning. Without a well thought out plan to achieve your vision, it may be more challenging to achieve your desired results. One common approach: you know most of what you want, you jump in, get started, and figure out the rest as you go. This may work for some things in life, but improvisation is not the best approach for a remodel. There are too many details that have to come together seamlessly. Especially in Hawaii where long lead times and shipping costs can add to the stress of a project, a good remodeler knows that jumping blindly into a construction project is risky. Your best bet is to start with a design and a plan.

2. Budgeting – Think of your budget in terms of both time and money. Know how much you can afford to spend on your project, but also how much time it might take. The effort that goes into the design phase can be a little frustrating because when you approach a remodeler, you're ready for the change now. But how you start a project will greatly impact how you finish it. Budget some time to plan the necessary elements to make sure you are happy with all of them before jumping in. This includes researching the types of products and materials you'd like, how to better utilize your space, or how to update your home. This may mean multiple rounds of looking at conceptual drawings and sampling materials. But be patient. The time to experiment is during the design phase and not during construction, when experimentation can be costly. Discussing your goals, priorities and expectations with your remodeler and taking this time at the start of your project can help you stay on budget and on schedule.

3. Construction - for experienced design/build remodelers, the construction phase is often the easiest part of a project. All major decisions have been made, and all parts have been selected and laid out ahead of time. Everything fits in its proper place and will perform as designed because the whole project is already put together on paper and in specifications. Sticking to the original plan is the best approach, but more than likely there will be some changes during the remodeling process. Stay in communication with your remodeler to minimize the negative impact on your family and home as it relates to the construction process. A good remodeler will help you maximize your investment and prioritize your

needs. Proper planning will help you manage costs, minimize headaches and maximize the enjoyment of your project so you can watch your dream design turn into a reality.

If you think you ready to work with a remodeler, you can contact us for a free consultation at info@edbhawaii.com or go to our website: www.edbhawaii.com.

Home Design and Remodeling Trends for 2019

We've rounded up ten of the hottest home design trends for 2019. Not all trends will work for every house, and not all trends will appeal to everyone. But if you are planning to renovate your home, you might find some inspiration here.

Backsplash Trends

Eye-catching backsplash tile is nothing new in kitchens. We've seen colorful patterns and geometric tiles show up in a lot of kitchens for years now. But what we are seeing more of lately is taking the tile from countertop all the way up to the ceiling, including behind floating shelves to create a feature wall.

If homeowners are using subway tiles these days, they are using larger ones. Or playing with new ways to install them in a herringbone, chevron, or stacked pattern, as opposed to the more traditional offset brick pattern. Homeowners are also moving on to textures or patterns. The color choices are endless, but neutral palettes are still a great option for those looking for a classic look.

Open Shelving

Removing upper wall cabinets has been a growing trend in the last few years. It can help open up the visual space making the kitchen appear larger and brighter or create a focal point. If you're not ready to give up all your upper cabinet storage space, just replace just one or two upper cabinets with open shelves for a lower-commitment but still-updated look.

Concrete Accents

Providing a clean look that's easy to complement, concrete isn't just for countertops. Geometric concrete tiles are becoming increasingly popular. If you were wondering why concrete had fallen out of trend, 2019 is the year it steps back into many homes.

Mixed Metals

Matching the faucet to the hardware and the light fixture finishes is a good rule of thumb, but if done right mixed-metals can look great together. Don't feel limited to using a single metal finish throughout your home or even throughout a single room. We're seeing designers mix metals in 2019, and their top choices include copper, brass, pewter, gunmetal, or matte black. From faucets to cabinet pulls to accent pieces, changing out your old or dated fixtures is an easy and relatively inexpensive way to update your kitchen and bathrooms. Be careful not to make the space look completely haphazard. When done well, mixing metals adds depth and gives your room a more curated look.

Appliances

Appliance styles, just like the rest of the kitchen, are making big changes.

Stainless steel has been the industry standard for years, but the market is trending toward variety and fresh alternatives. According to design trends in 2019, gone are the days of matching silver toned appliances.

Traditionally appliances are sold in suites, but it is becoming more popular to find a vintage styled refrigerator or stove sold individually. While this might not be everyone's personal taste, you could explore this retro trend and make it your own. Homeowners seem willing to experiment with a wider range of tones around the kitchen these days.

Advancements in technology are bringing a new wave of appliances to the market. Induction cooktops are replacing gas ranges as a new favorite. And french door ovens and steam ovens are also becoming more popular, especially ones with smart features you can control from an app on your smartphone.

Connecting With The Great Outdoors

Homeowners are connecting the kitchen to an outdoor space or patio by adding entry points from the kitchen to outside entertainment areas and Lanais. A single door connecting a kitchen to an outdoor area doesn't cut it anymore. What homeowners want is a blurring of inside and out. Large sliding and collapsible doors give that feeling and help increase living space.

By installing a glass door in your kitchen, you can easily connect these two spaces in your Hawaii home.

Easy-Reach Shower Controls

Reaching in to turn on the shower in the morning and getting hit with a cold blast of water is no way

to start the day. Relocating the shower controls to an opposite wall during a remodel solves that problem. Talk to your designer and builder about the additional cost that might come from adding the extra plumbing to get this feature.

Ceiling, Walls and Trim the Same Color

Paint is still one of the most cost effective ways to update your space. Instead of accent walls, many homeowners are taking the now-popular moody colors and applying them to every surface: walls, trim, ceiling. The effect is a cozier feeling, and gives a more finished result.

Painted Shiplap

White shiplap has been having a moment in recent years. And while it's still popular, its look is changing. Painted shiplap is showing up a lot. It's a great look for bathrooms because it adds texture, dimension and character in a room that can otherwise feel sterile.

Wallpaper

Many stay away from wallpaper in general, yet 2018 was a year that saw wallpaper used in more homes. 2019 will be no different, except instead of bold prints or patterns, try a subtle textured wallpaper. It's enough to add that pop you want without overdoing it.

If you are thinking about renovating your home, it's a good idea to be thoughtful about the colors, materials, and finishes you select when planning a remodel.

Working with a professional remodeler can help you realize your vision and maximize the impact of your investment.

You can contact us for a free consultation at info@edbhawaii.com or go to our website: www.edbhawaii.com.



envision.design.build.

we bring your vision to life

residential remodels | renovations | construction services | architectural design & permitting

808.445.4109

www.edbhawaii.com



Got Leakz? Call Greekz!

372-1820

Greekz Plumbing

**GREEKZ
PLUMBING**

**HYDRO-JETTING
DRAIN
CLEANING**

372-1820

AVAILABLE 24 HRS
License# C-32939

Stay Cool, Save \$ and Protect the Environment

Exclusive for North Shore News from
Hawaiian Electric

Summer temperatures soar and air conditioning use rises, which means higher electric bills. To help you keep cool, manage electricity use, and protect the environment, Hawaiian Electric offers these home improvement tips:

- Hang light-colored awnings, blinds or install tinting film on south and west facing windows to block out the afternoon sun. Solar window film or tint can reflect 80 percent or more of the incoming heat.
- Invest in a solar-powered attic fan to draw out hot air and reduce attic temperatures.
- For the attic fan to work properly, make sure to install proper insulation in the attic to keep the heat from transferring to your living area.
- If it's time to fix your roof, use light-colored roof material and exterior surfaces to stay cooler
- Check for drafts – maintaining proper sealing and insulation of walls, ceilings, windows and floors can save up to 20 percent on cooling costs
- Ceiling fans are only appropriate for rooms with ceilings at least 8 feet high. For the best circulation, install fans so that the blades are 7 to 9 feet above the floor, and 10 to 12 inches below the ceiling.
- Plant leafy native trees, plants and shrubs or set up trellises on the warmer east, west and south facing sides

of your home. A tree's shade and the evaporation of moisture on its leaves can reduce surrounding temperatures by as much as 9 degrees.

- Grow shrubs and groundcover plants near driveways, sidewalks and lanais to reduce heat radiation.
- Prune plants near windows so they don't block trade winds.

Make sure that trees and their roots will not interfere with overhead or underground utility lines when they reach maturity. Plant trees that grow higher than 30 feet or more at least 30 feet away from overhead lines.

Visit www.hawaiianelectric.com for our free online energy savings toolkit that includes energy conservation guides and booklets or call 543-7511 for more information.

COUNTRY WELDING

Trailers, security gates, railings,
truck racks, custom and repair
(Heavy Equipment)

ALUMINUM/STAINLESS/GALVANIZE

Ryan (808) 226-6939

Selecting Native Plants for Your Landscape Waimea Valley on Oahu's North Shore

Making improvements around the home this month? Why not incorporate some Native Plants in your yard! It is a good way to support the environment and preserve these species for future generations, but it is often difficult to know what plants to put in your garden. This article will help you, by giving you some important guidelines and factors to consider when making those decisions. As you choose native plants for your garden, you will want to think about: your environment, the region from which the plants you will be installing have come, and the impact that may have on your current landscape and local conservation efforts.

It is helpful to select Native plants that are already found in your current environment (coastal, plains and, mauka areas) A plant that comes from a wet, cold upland forest will not do well in hot, dry, sandy soil with lots of salt spray and vice versa. So, selecting a plant that thrives in your particular type of environment is a good start however, these environments will vary by region even on a single island, this will affect what plants make the best choice for your home garden.

We recommend that when you try to plant native species in your backyards you not only choose ones that are adapted to your environment, but also look for plants that are already found within your region. We have several partners organizations on the North Shore that we provide native plants for. The plants that we select are adapted to our coastal environment; these include: akuli akuli, ohai, nāpaka, and hina hina. All of which we have propagated from plants found within the valley, or from populations within the North Shore region spanning from Kaena to Kahuku. This practice helps to perpetuate and preserve our regions wild and nursery propagated native species.

We also recommend choosing species that are from your specific geographic region in order to support genetic diversity. Which leads us to share a bit about genetic diversity, what it is and why it is important.

Genetic Diversity is the variation in the genetic traits found within and among individuals of a specific group. This group is called a gene pool and can vary in size from a single small population to a species, an assemblage, or a community and so on so forth. An example of genetic diversity would be a group of native red flowered Hibiscus plants from Pupukea. Let's say we have 100 plants, that group is our gene pool. The genetic diversity would be the variable traits within the group of plants. Some may be short, some tall, some with small flowers, others with large ones. All of those different traits are the markers of genetic diversity.

Now you might be wondering why it is important to consider genetic diversity with respect to native plants and how this may apply in your region. It is important because the more diverse a population is, the better it can survive in a changing environment. If a flood happens, maybe all the tall plants survive, if it gets too windy the big flowers will blow off and those plants won't produce seeds. Diversity equals out to flexibility. Choosing from your region ensures that more of the genetic traits that have adaptations to that area survive and pass on into future generations of plants.

A good example of genetic diversity locally would be the Ma'ō hau hele plant, otherwise known as Hibiscus brackenridgei. It is federally listed as endangered so you would not be able to plant this in your landscape without a red permit marker. There are a few different types of Ma'ō Hau Hele found on various islands, but we actually have a population of this species that is only found naturally in Mokuieia. It is different from all of the other populations because it is adapted to mokuieia and is considered to be its own subspecies. The conservation efforts to ensure this plant does not go extinct is a good example of how genetic diversity can be utilized and considered. There are efforts being put into augmenting wild populations with nursery grown plants and establishing new populations in safe areas like the Ka'ena point Natural Area Reserve. They use research mapping the genetic diversity within the surviving populations to help guide future re-introduction and augmentation efforts. A big focus is on making sure that they protect the genetics of the mokuieia plants by not introducing genetics from plants that belong on Kauai for example. What this means for you is that if you want to grow this endangered species in your area, it is best to look for ones that belong there so that you can support the gene pool of Mokuieia's Ma'ō Hau Hele and not diminish that unique diversity.

As you enhance your gardens with Native Species, we thank you for appreciating the importance of responsible choices. We hope that the guidelines in this article will help you to understand your choices and what factors you will want to consider. We can all do our part to support the environment, grow native species and encourage genetic diversity. If you want to know more about this topic, a good way to learn is to connect with local conservation programs and native gardens. We would also like to invite you to stop by our nursery the second Saturday of each month to find local Native plants available for purchase.

KAUWELA KAI

Paddle Race Results
Sunday June 09, 2019

PADDLEBOARD MENEHUNE

1. Kailani Jones 1.01.22

PADDLEBOARD STOCK 12' W 19-39

1. Moana Jones 53.25
2. Ashley Albores 1.11.49

PADDLEBOARD STOCK 12' W 40+

1. Colleen Tessler 56.06

PADDLEBOARD STOCK 12' M 19-39

1. Johan Loo 55.33
2. Omar Takriti 55.45

PADDLEBOARD STOCK 12' M 40+

1. Scott Shimada 51.32
2. Dawson Jones 53.33
3. Michael Cheape 53.36

PADDLEBOARD UNLIMITED

1. Jamie Mitchell 48.10
2. Chris Owens 49.08
3. Andrew Ozimec 49.46

SUP 12'6 & UNDER W 19-39

1. Nicole McNamara 1.18.09

SUP 12'6 & UNDER M 19-39

1. Brent Biemann 1.00.19

SUP 12'7 TO 14' NO RUDDER

1. Paul Zacharyas 50.19
2. Alex Salazar 52.08
3. Gordon Murray 55.26

SUP UNLIMITED

1. Jacy Shimahara 50.42
2. Kiyomi Sheppard 51.02
3. Kanai Sharsh 51.37

OC1 WOMEN 19-39

1. Erica Adamczyk 54.05
2. Bree Thuston 1.00.49

OC1 WOMEN 40+

1. Lili Taliulu 51.54
2. Carla Vierra 52.56
3. Kelly Godwin 56.00

OC1 MEN 19-39

1. Mo Freitas 42.14
2. George Smith IV 43.25
3. Thomas Pule 47.13

OC1 MEN 40+

1. Tim Vierra 47.44
2. Doug Osborn 48.13
3. Kanoa Dahlin 48.40

OC2

1. Twins 44.28
2. Leeloy 'Ohana 44.45
3. Sunny D 46.00

OC3

1. Kolohe Kai 1.02.57

OC4

1. Team Kapakahi 52.33
2. Punani Patrol 53.28
3. All Bus 56.52

V1

1. Glenn Williams 44.07
1. Tavita Maea 45.04

SURFSKI

1. John Hoogsteden 43.43



BANZAI NORTH SHORE WIRELESS

PAKALOHA BIKINIS TANDEM WORLD TITLES IN WAIKIKI, PRESENTED BY SEA HAWAII

The ITSA, International Tandem Surfing Association, announced the return of the Tandem World Championship to Waikiki at the end of June. It is fitting that the World Titles will be held at the birthplace of tandem surfing, Waikiki. History says tandem surfing started with Duke Kahanamoku and the famous Beach Boys of that era. The playful antics of the boys taking out tourists to surf may have started the skilled sport of acrobatic surfing today. There are about 70 plus official lifts now and each carry a different value in points. The fish, shoulder stand, pinwheel, falling angel, split acro are some of the names of the lifts that have to be held for at least 3 seconds to be counted. There will be 16 teams competing and they are coming from all over the world. Current World Champions Kalani Vierra and Krystl Apeles will be defending their title in the competition on June 28th. Both surfers are from Kauai and have won many events. Vierra is a legendary waterman, fireman, Hollywood stunt guy and Hall of Fame inductee. Watch for the team to win another World Title! Thanks also to Sea Hawaii, Da Hui and many more of the sponsors! Good luck teams!!!

THE HAWAIIAN THIEF

Haleiwa is named after a bird that floats forever on air currents in our sky and nest near in the mountains. The Iwa bird does not have waterproof oily feathers but still they fly offshore and are able to fly for hours or even months in search of food. Their main diet is fish and squid caught on their own but they do "steal" food from other birds and therefore the name Iwa which means thief in Hawaiian. They are known to even shake other birds until they throw up their catch! The Iwa is a large bird but they don't weigh much. Their wing span is more than 7 feet and they have a forked tail. It is hard to get a photo as they soar high above in the updrafts. When you see one though you are amazed at their size and smooth flight, sometimes flying before a storm. The male, Fregata Minor, have red "chin" pouches and females tend to be larger of the two. The females only lay one egg and it takes about a year and a half to raise a chick. Experts say the chicks are in danger of pests like rats and mongoose. These birds are beautiful in flight and a great bird to name our town after, Haleiwa, house of the Iwa bird! When Benjamin Dillingham open a

luxury hotel in 1898 on the North Shore he named it after the bird. A remarkable beautiful representation of a beautiful place!

OLYMPIC FEVER AND BIG DECISIONS, ISA WORLD GAMES A PREREQUISITE

The North Shore's John John Florence and Honolulu's Carissa Moore are nominated to surf in the ISA World Surfing Games! The International Surfing Association (ISA) announced the World Surf League Championship Tour surfers that have been nominated to represent their National Surfing Teams at the 2019 ISA World Surfing Games in Miyazaki, Japan September 7-15. The nomination of the top WSL surfers will make for one of the most exciting editions of the event to date and will promote the incorporation of the world's best surfers on their national teams. The ISA World Surfing Games have been held since 1964. WSL Champions Stephanie Gilmore (AUS), John John Florence (USA), Gabriel Medina (BRA), and Carissa Moore (AUS), along with ISA World Surfing Games Champions Sally Fitzgibbons (AUS), Jeremy Flores (FRA), and Courtney Conlogue (USA), will be headlining the talent representing their nations and going for Gold in Miyazaki. The event will be ahead of the Olympics in 2020 and will help determine eligibility. For the full list check out the ISA.com site.



Iwa Bird flies at Kaiaka Park



John John at his homebreak "Pipeline"

WAIALUA FEDERAL CREDIT UNION

HOME EQUITY LOAN

3.75% APR*

CALL US (808) 637-5980 OR
VISIT US WWW.WAIALUAFCU.COM



*Annual Percentage Rate based on an index of 3.50% plus the monthly average of the 26 week Treasury Bill (Auction High) and may be adjusted annually each March. Please call for more details.

BOW WOW BUNGALOWS

Licensed Boarding Kennel
North Shore, Oahu
Reasonable Rates
Ph. 637-2562
These Dogs Have Fun!

WAIALUA FARMERS' CO-OP MARKET

Saturdays 8:30 am-1:00 pm
On the grounds of
Historic Waialua Sugar Mill

- FRESH PRODUCE
- PLANTS & FLOWERS
- PLATE LUNCHES
- BAKED GOODS/PRESERVES
- ARTS & CRAFTS/ANTIQUES
- HAWAIIAN GIFTS
- AND MORE

**SUPPORT FARMING
BUYING DIRECTLY FROM THE FARMERS**

Haleiwa Evangelical Mission International



Come and join us
Sunday's at Waialua
Elementary School Cafeteria

Sunday School at 9:00 am
Worship Services at 10:00 am

For Prayer
Call 637-4567

Blessed to be A Blessing



"Children's Church"

BULLETIN BOARD

CELESTIAL
Natural Foods



Featuring the largest selection of certified organic produce on the North Shore.
No panic...ours is organic.
Open 7 days.
Mon.-Sat. 9am-7pm.
Sun. 9am-5pm

66-445 Kam. Hwy
Haleiwa, Hawaii 96712
Next to the Post Office
808-637-6729 • 808-637-1922 fax

LTC

Laie Trucking Company, LTD

* Ready Mix Concrete * Recycled Aggregates
* Pump Service * Hauling * Equipment Rental

PH: (808) 293-8710 PH: (808) 293-1296
P.O Box 121 FAX: (808) 293-2890
Hau'ula, HI 96717 laietrucking@hawaiiintel.net

"A LOCAL COMPANY, BUILDING A LOCAL COMMUNITY"

N-C PLUMBING & SUPPLY

Cont. Lic. No. C-8913



- RESIDENTIAL & COMMERCIAL SALES & SERVICE
- CONTRACTING & DESIGN • HOME PLUMBING SERVICE
- PLUMBING FIXTURES, HEATERS • FREE ESTIMATES

Nestor P. Calilao (Owner)	Bus:	637-8662
P.O. Box 769	Res:	638-5157
Waialua, HI 96791	Cellular:	372-8718

Saccoccio & Lopez

ATTORNEYS AT LAW

TRIAL LAWYERS

Serving Hawaii since 1984

637-7611

Personal Injury - Property damage
Criminal Law - Traffic Crimes
Landlord Tenant - Bankruptcy



KATHI LEE ALBIAR
OWNER/BROKER - RB 17327

808-358-4139
[KATHI@ALBIARREALTY.COM](mailto:kathi@albiarrealty.com)
[WWW.ALBIARREALTY.COM](http://www.albiarrealty.com)

SALES & PROPERTY MANAGEMENT SINCE 1993

LIC. #AC 18275

COWPER CONSTRUCTION

GENERAL ENGINEERING CONTRACTOR

Full Service Sitework
Contractor

Septic Systems & Tanks
Since 1978

Michael Cowper 638-7200
cowperhawaii.com

Munden Design & Build

Lic.#BC19632

Design • Plans • Permits • Construction
Additions & New Residences

808 391-8616

Providing quality work since 1978

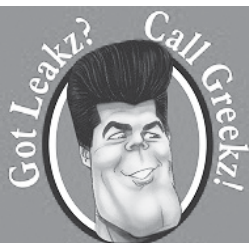
PARADISE

"IF YOU BUILD IT, WE WILL PLUMB"

PLUMBING

New Construction, Repair, Remodels

Dale Christensen C-29856 (808) 368-1473



Got Leakz? Call Greekzi!
372-1820
Greekz Plumbing

Greekz Plumbing

License# C-32939
Phone 372-1820

School of Champions

Established 1966

International Karate Federation



IKF Waialua Dojo
Waialua Elementary School

Beginner classes - ages 5 & up
Mon & Wed 5:00 - 6:00 pm

Intermediate classes
Mon & Wed 6:00 - 7:30 pm

Call 780-5457 or email: wvbinz.bb@gmail.com



HAWAII STATE PUBLIC LIBRARY SYSTEM

A UNIVERSE OF STORIES


Summer Reading Program
June 1 - July 13, 2019

KAHUKU PUBLIC AND SCHOOL LIBRARY

56-490 KAMEHAMEHA HWY, KAHUKU, HI 96731

808-293-8935

Falling Safely for Seniors
with Kupuna Aikido




**THURSDAY
JUNE 20
2:00PM**

Kupuna Aikido will demonstrate how to reduce your risk of falling and techniques that can reduce serious injury from falls. Learn how to fall to help: protect your head from injury, prevent or reduce significant injury such as broken hips, pelvis, arms, or shoulders. NO PHYSICAL AUDIENCE PARTICIPATION.

Kupuna Aikido is a 501(c)3 organization made of volunteer senior Aikido instructors who are concerned about kupuna falling and getting hurt.


"The Sky is Full of Stories"
music and storytelling
with James McCarthy



**MONDAY
JUNE 25
5:30PM**

James is a founding storyteller of Honolulu Zoo's popular Moonlight Tours and Snooze in the Zoo which bring to life the stories to be found in the skies. Ancients of all traditions enchanted their listeners with legends of the stars and moon.

STAR WARS JEDI
TRAINING
WITH LEGO!!
PLAY WELL
TEKNOLOGIES



**TUESDAY
JULY 9
5:30PM**

For more event information, please visit librarieshawaii.org/Kahuku

If you need an auxiliary aid/service or other accommodation due to a disability, please contact the library at least 7 days prior to the program date. We will make every attempt to fulfill all requests for accommodations. All programs are subject to change. For a list of upcoming library events, visit www.librarieshawaii.org/events.



North Shore News



2019 Schedule

PUBLICATION DATE	EDITION	DEADLINE DATE
July 3	Haleiwa Arts Festival	June 21
July 17	#14	July 5
July 31	Agriculture/Farming	July 19
August 14	#16	August 2
August 28	#17	August 16
September 11	#18	August 30
September 25	#19	September 13
October 9	#20	September 27
October 23	#21	October 11
November 6	#22	October 25
November 20	#23	November 8
December 4	#24	November 22
December 18	#25	December 6

Direct-Mailed to Every Home
MOKULEIA · WAIALUA · HALEIWA · KAHUKU · LAIE
Every Other Wednesday
12,000 copies

"The North Shore's most popular publication" since 1970
 (808) 780-8037 · NSNHaleiwa@gmail.com · NSN4Linda@gmail.com
 www.northshorenews.com

Waialua Public Library
UPCOMING EVENTS

67-068 Kealahouani St, Waialua, HI 96791
 637-8286

Used Book Sale

Saturday, July 20, 8:30am-12:30pm
Weather Permitting

Writers' Group

Saturday, July 13, 12pm (new time)
 Topic: "Collections"

Readers' Group

Thursday, June 27, 9:30-11am
The Shadow of the Wind

Recurring Events

Toddler Time - Fridays, 10am
Storytime - Saturdays, 10am
Computer Instruction (by appointment)

Summer Reading Program

A Universe of Stories, Crafts, Prizes!

Saturdays at 10:00

for all ages - babies, kids, teens, adults

Grand Finale Performance 7/13, 10:00

by Magician Glen Baily

Library Closed - Thursday July 4 - Independence



OFF da Island in Osaka, Japan

NSN subscribers Kalani and Nicole Hiramoto from Vancouver, Washington found Eggs 'n Things while walking through "Amerikamura" (American Village) in Osaka.



North Shore Food Bank and

North Shore Service Center

IHS, Alea Bridge, Catholic Charities, US Vets,
 Access to Independence and more

Wednesday, June 19 & July 3, 2019
 Waialua Community Association
 9:00am - 1:00pm



CLASSIFIEDS

The North Shore News is published every other Wednesday and mailed free of charge to all North Shore homes and businesses. Extra copies may be obtained at our office.

PRESS RELEASE POLICY: Submit press releases in person, mail or email to Editor, North Shore News, 66-437 Kam. Hwy., Suite 210, Haleiwa, HI 96712. Please type your releases and keep them shorter than 200 words unless they are of an unusual news interest. Releases should be viable news stories and are published on a **space available basis only**, with priority given to those received in our office first. You may attach photos. We are not responsible for the return of any photos. All materials are submitted at owner's risk. We reserve the right to edit and/or refuse all submissions including advertising.

EDITORIAL POLICY: We welcome articles and letters from our readers. Letters to the Editor are published on a space available basis only and preference is given to shortness of length, and quality of content. We prefer to run not more than one letter, per person, per 6 month period. Letters subject to edit.

Views expressed by our contributing writers and advertisers do not necessarily reflect the view of the management and staff of the North Shore News. All rights reserved. Reproduction in whole or part without permission is prohibited. © 2019.

Editor & Classifieds

Linda Seyler

Typography

Downtown General Store

Contributing Writers

Tom Jacobs

Betty Depolito

State Representative Lauren Matsumoto

Senator Gil Riviere

Councilmember Heidi Tsuneyoshi

Photography

Banzai Productions



Please recycle this newspaper.

SERVICES

SHORE ELECTRICAL SERVICE

New Const-Remodels
638-0049 / Lic#C20777

Computer Problems?

I can fix any MAC or PC.
Chris 371-3089

Andres Plumbing

All your plumbing needs
808-256-7337 Lic#C24500

Carpentry & Painting Services

Repairs/Remodeling,
Termite Rot, Doors, Cabinets,
Countertops, etc.
Reasonable Rates 271-6584

Green Gypsy Thrift Shop

Waiialua—(808) 366-4000
Next to Paalaa Kai Bakery

Dog/Cat Nail Trimming

At your home-only \$20
Call 808-388-5336

Mobile Notary Public

Commission # 17-342
Call or text (808) 351-4405

**North Shore
Pet Nanny**

Experienced Pet Sitting,
Walking, Drop In Visits
Call Kathryn
808-489-3645
Reasonable Rates

ALOHA COMPUTER

PC/MAC Repair/Virus
Removal
MOBILE COMPUTER
REPAIR SERVICE
372-2667

**LEARN TO SWIM
AT THE
HAWAII SWIM
SCHOOL**

ON THE NORTH SHORE
Developing swimmers since 1982
Haleiwa Rd. at Smiley Place
637-4863

Paumalu Electric Inc.

C 18074

Residential & Commercial
New Installation & Repairs
Renovations. Remodels
Electric Meter Replacements

Dave Hancock 638-9054

Hawaii Tree Co.

Trimming & Removal
Professional-Reliable
Free Estimates
462-2749

Radiant Skin Care & Waxing

Aynjul Benigno
Licensed Esthetician
Call or Text 808-222-8124
radiantskincareandwaxing.com
66-935 Kaukonahua Rd.,
Waiialua

**Recreational Guitar
Lessons**

Play along and sing
familiar tunes
Relaxed atmosphere,
Kukea Circle Waiialua
781-7016

**CS EuroCars Kapolei
Mercedes Repair Shop**

with low labor rates
ASE Certified Technician
27 years experience
2116 Lauwiliwili St. Unit 104F
Kapolei, HI 96707 - Under New mgmt.
808-682-1957

North Shore Car Rentals

Cheap cars for rent
Older model vehicles with a
"local" vibe to them
All vehicles well maintained
and safety inspected.
Contact us for more info!
northshorecarrentals@
gmail.com
or call (808) 829-0462

BIKRAM YOGA

Saturday 7am class!

www.bikramyogahawaii.com
Please call for class schedule
637-5700

HARVEY'S TOWING LLC

24 hr Towing Service
Lockouts, Jumpstarts &
Recovery. Specializing in
opening locked car doors.
Call anytime 478-0333

**Your Clean Home
Vacation/Residential
Home Cleaning & Laundry**

Affordable • Reliable
• Green Cleaning
For Free Estimate
Call 728-5035

**WHY KNOTT
FLORIST
Waiialua Shopping
Center
637-9380**

Pet Sitting North Shore

Over Nights/
Pet Walk Services
\$10 Off for New Clients
Booking now for Summer!
343-7146 Emilie

**New York Life Insurance
Company**

Licensed Agent experienced in
offering a wide variety of products
custom tailored to meet your
financial needs and goals.
Call or Text Brandon Reynolds
(808) 518-7147
breynolds01@ft.newyorklife.com



Like us on Facebook:
Facebook.com/
NSNewsHaleiwa

HOW TO CONTACT THE NORTH SHORE NEWS

Letters to the Editor, and other items submitted for publication consideration may be sent to us via:

MAIL: 66-437 Kamehameha Hwy., Suite 210, Hale'iwa, HI 96712

E-MAIL: NSNHaleiwa@gmail.com

PHONE: (808) 780-8037

Office Hours: Monday – Friday 10 a.m.-2 p.m.

www.northshorenews.com

CLASSIFIED ADS

Next Issue - July 3, 2019
Deadline Date - June 21, 2019

FREE ADS
 Garage & Yard Sales,
 Reunions, Lost & Found.
 Email ad to:
 NSNHaleiwa@gmail.com

**2019 NS Hanapa'a
 Jackpot
 Fishing Tournament**
 June 21 & 22
 Daily Weigh Ins at 4pm
 Haleiwa Harbor

Classified Ad Rates
 3 lines (min.) \$18.89
 4 lines \$25.13
 5 lines \$32.45
 1" Box Ad \$41.88
 (27 characters in each line)
 Include your contact information.
**Ads can be dropped off in mail slot,
 mailed, or emailed. Pay by check
 payable to: North Shore News or
 credit card by phone order.*
 We reserve the right to refuse any
 advertisement with a full refund.
 North Shore News • 66-437 Kam. Hwy.,
 Suite 210, Haleiwa, HI 96712
 (808) 780-8037 • NSNHaleiwa@gmail.com

OFF da ISLAND
 Are you leaving Oahu on vaca-
 tion or business? Do you live on a
 neighbor island, the mainland or
 foreign country and subscribe to
 the North Shore News? Send us a
 photo of someone in front of a sign
 or landmark holding a copy of the
 NSN. Email your photo along with
 the person or persons' name, com-
 munity of residence, telephone
 number and photo location to:
 NSNHaleiwa@gmail.com.



**Marianne
 Abrigo, Properties**

Specializing in -
**North Shore
 Real Estate**

Ask for our list of avail-
 able properties and/or a
 free market analysis.

Marianne M. Abrigo
 "Realtor since 1974"

Office 637-3511
Fax 637-0777
Email mabrigo222@aol.com

**North Shore Neighborhood
 Board Meeting**
 Tuesday, June 25, 2019
 7pm-9pm
 Waiialua Elementary Cafeteria

HELP WANTED
Housekeepers Needed
 Full-Time—40 hrs per week
 Benefits Included
 \$18-\$20/hr
 Call (808) 838-1202

**MATSUMOTO SHAVE
 ICE**
 Now Hiring!
 Apply in person daily
 9am-4pm
 808-637-4827

**Retail Sales
 Surf & Sea**
 Hawaii's Ocean Sports Headquarters
 is always looking for hard working,
 energetic people to become a part
 of our sales team. Good pay, bonus,
 benefits. Japanese speaking a plus.
 Ocean sports experience and
 dive instructor wanted. Please
 contact surfnsea@surfnsea.
 com for details.
 Apply in person daily 9am-7pm
 62-595 Kam. Hwy., Haleiwa

**Giovanni's Original
 White Shrimp Truck
 is hiring!**
**Immediate openings in
 Haleiwa and Kahuku**
 If you've got a great smile, like
 working in a fast paced, high
 volume environment then
 Giovanni's may be the right
 fit for you!
 We provide flexible schedules,
 \$15 starting pay, and 100%
 employee paid medical benefits.
 Qualified Applicants Must Have:
 • H.S. Diploma or Equivalent
 • Drivers license
 • Great smile & Lots of ALOHA
 • Ability to lift 50lbs
 Come join our team and be part
 of the Giovanni's Ohana,
 no experience necessary,
 training available.
 56-505 Kam Hwy, Kahuku
 (808) 293-1839

**NOAA Stranded,
 Entangled
 Injured Sea Turtles**
 (808) 725-5730

FOR RENT
**MODERN 1 BEDROOM/
 1 BATH + LOFT**
 Fully Furnished
 1 Bedroom/1 Bath + Loft
 Granite/Wood Floors/
 Designer Kitchen
 Private/Secluded/Gated Estate
 Call Jessica at (808)838-1202

Beautiful 2 bedroom/2.5 bath
 Partly Furnished
 Private Secluded/Gated Estate
 Available July 1, 2019
 Call (808) 838-1202

Beautifully Fully Furnished
 Studio/1 Bath
 Private/Secluded/Gated Estate
 Available July 1, 2019
 Call (808) 838-1202

TABLES & CHAIRS
 Call North Shore News
 780-8037
 All proceeds go to the North
 Shore Food Bank

MISCELLANEOUS
**IMPORTANT MESSAGE
 from North Shore News**
 We will only be accepting the follow-
 ing donations: Gently used clothing,
 towels, blankets and canned goods.
 Please DO NOT leave the following:
 Toys, household goods, shoes, and
 unwashed clothing and bedding.
 Mahalo!

**North Shore Country
 Market**
 Welcome New Vendors
 Only \$15 Space Fee
 Info online
 NorthShoreCountryMarket.
 NGO

**Waiialua Farmers
 Co-Op Market**
 Waiialua Sugar Mill
 Saturdays, 8:30am-1:00pm

**North Shore Serenity
 AL-ANON**
 6:30 - 7:30pm Wednesdays
 St. Michaels Church
 Cottage in back of Church

Parkinson's Group Meeting
 Group meets at the Waiialua
 United Church of Christ on the
 1st Saturday of every month.
 Friends & Family Welcome
 Next meeting July 6 @10am
 manshoj001@hawaii.rr.com

Would you like to get the
 North Shore News via
 email in color! Just send
 us a message at:
 NSNHaleiwa@gmail.com
 and you get the NSN
 online every two weeks!

**North Shore Christian
 Fellowship**
 Ohana Produce Distribution
 Friday, June 21 10am
 Waiialua Community
 Association

**North Shore News
 Haleiwa Arts Festival
 Issue**
 Publication Date: July 3, 2019
 Deadline Date: June 21, 2019
 Call for Discounted Rates
 (808) 780-8037

**MAULO A
 FOOD PANTRY**
 at Sunset Beach Christian
 Church
 Tuesdays, 9am - 12 noon

**Vegan Skin Care &
 Nutrition**
 Looking for health minded
 people for our team that is
 expanding on Oahu.
 Work part time from home with
 potential to earn a corporate
 income within a year.
 Call Kathy (808) 223-5392

**To Report Fishing
 Violations**
 643-DLNR (3567)

BUSINESS SERVICES CENTER
 Fast & Convenient Copy, Fax, Scan,
 Computer/Internet, Laminate, & More



**Across from
 the Haleiwa
 Post Office**

637-4558 • gonorthshore.org
#gonorthshore

Kahuku Medical Center Now Offering Mammography Services



*M*ammograms are the single most effective method of early breast cancer detection. Kahuku Medical Center is pleased to now provide mammography screening services in the community. To schedule an appointment, call Kahuku Medical Center 808-380-1426.

- Appointments offered at the facility every Tuesday and Wednesday, 9:00 a.m. - 6:00 p.m.
- Assistance is available to patients who do not have coverage
- Most medical insurance accepted
- Walk-ins are also welcome

For women 40 and older, mammograms should be part of a yearly physical routine and do not require a doctor's referral. Women who are under 40 and have a family history of breast cancer or other concerns should speak with their doctor to determine when to begin mammography screening.



Kahuku
MEDICAL CENTER

*Friends and Family Taking
Care of Friends and Family*

www.kmc-hi.org | 808-293-9221