



“E Ala Na Moku Kai Liloloa”

In This Issue:
 Kahuku Medical Center
 10th Anniversary Celebration
 Pages 4 & 9
 North Shore Chamber of
 Commerce News
 Page 10
 North Shore Surfing Wireless
 Page 15



Eli Hanneman winning wave!

NORTH SHORE NEWS October 24, 2018 VOLUME 35, NUMBER 21



Community Traffic Awareness Program sign wavers- Senator Gil Riviere, Councilmember-Elect Heidi Tsuneyoshi, NSCC Mgr. Roxana A. Jimenez and Wahiawa Police Officer. Photo: NSCC

The Signs Say It All

Drunk Drivers are Deadly, Park the Cell Phone, No Second Chances, It’s Speed Limit were some of the signs being held by participants promoting traffic safety awareness.

On October 10, 2018 the North Shore Chamber of Commerce joined the Wahiawa Police Department to co-sponsor an event held in

honor of North Shore resident Dr. Eugene Chin and others recently killed or injured by motorists.

The sign waving event held at Weed Circle was part of the Wahiawa Police Department's program called CTAP, “Community Traffic Awareness Program.”

Mahalo to Starbuck’s Haleiwa

for providing free coffee to all the participants. Please drive carefully and watch for pedestrians.

For more information on the Community Traffic Awareness Program contact the District 2 Community Policing Team 723-8709.

66-437 Kamehameha Hwy., Suite 210
 Haleiwa, HI 96712

PRE-SORTED
 STANDARD
 U.S. POSTAGE PAID
 Honolulu, Hawaii
 Permit No. 1479

PROUDLY PUBLISHED ON THE
 North Shore of Oahu
 Home of
**Westside Dive &
 Tackle Haleiwa**



OFF da Island in Montana

Wendy Gorka from Waiialua on a recent trip to Montana. She is pictured here with the North Shore News in hand at Logan Pass on the Going-to-the-Sun Road, a most stunning and scenic drive in the Glacier National Park. For more information on the Off da Island campaign turn to page 23.

CORRECTION:
October 10, 2018 -
Where Did our Beach Go?
 Contact Info: laycielove@gmail.com
 (808) 561-5213
OceanfrontPreservation@gmail.com

CRAFT FAIR

Saturday, November 10, 2018
 9:00 a.m. to 2:00 p.m.

Come and join us at our annual craft fair!!! Some of the items for sale are:

- Jewelry, baby clothing & accessories, and other handmade crafts
- Essential oils, skincare, health & wellness products and spinal screenings
- Bento, sushi, baked goods, fruit preserves, and much more!

HALEIWA JODO MISSION
 66-279A Haleiwa Road
 Phone: 637-4382
 (Opposite end of Alii Beach Park from the Haleiwa Boat Harbor)

☆☆☆☆☆☆☆☆☆☆☆☆☆☆☆☆☆☆
 ☆ Interested in selling your craft items? ☆
 ☆ Please call 637-4382 or email Melanie ☆
 ☆ at haleiwa.jodominionya@gmail.com ☆
 ☆ for more information. ☆
 ☆☆☆☆☆☆☆☆☆☆☆☆☆☆☆☆☆

The Hale'iwa Family Dental Center, Ltd.

Our office will be closed from October 31 to November 19.
 Please take care of any problems before that time

- Adults and children
- Most cases completed in 4-12 months
- Clear braces available
- Lower cost
- University tested
- Used for over 20 years

Produced by Todd R. Okazaki and Staff

"Straighten those crooked teeth that have bothered you for years"

Conveniently located behind First Hawaiian Bank in Historic Hale'iwa Town
 Call 637-9652 for your reservation



**Harvest Moon Dance:
A Fundraiser for Waimea Valley**

Friday October 26 - 7pm on the Main Lawn,
Rain or Shine

Featuring Joe Green and the North Shore Band and farm-to-table cuisine by Ke Nui Kitchen! Support the Valley and buy tickets/learn more at waimeavalley.net



**7th Annual Makahiki Festival
& Ke'Alohi Hula Competition**

Saturday November 10 at the Upper Meadow & Amphitheatre

Celebrate Makahiki at the Valley! Annual hula competition, traditional games, live music, local vendors and artisans, 'ono food, and more – Details at waimeavalley.net



**Kama'aina Keiki & Lā 'Ohana
Family Days at the Valley**

Kama'aina Keiki Wednesdays and
Lā 'Ohana Sundays (3rd Sunday Every Month)

Kama'aina keiki 12 and under enjoy free admission every Wednesday! Bring the entire family for a fun-filled day of Hawaiian activities, games, and much more for all ages



**Hale'iwa Farmers' Market
Every Thursday**

Thursdays 2 - 6pm at the Pikake Pavilion

Join us every Thursday, rain or shine, at this award-winning weekly market featuring fresh produce, local vendors, arts and crafts, and live music



On the North Shore Across from Waimea Bay

Open 7 Days a Week, 9am - 5pm

Call: (808) 638-7766

@waimeavalley @waimeavalleyoahu

WHERE HAWAII COMES ALIVE

WAIMEAVALLEY.NET



It's a Health Hoolaulea!

Come join us as we celebrate our 10 years as your neighborhood health center!

10th Anniversary Celebration!

Live entertainment! Craft and food booths!
Demonstrations! Prizes! And much, much more!

SATURDAY, OCTOBER 27 • 10AM – 2PM



KAHUKU MEDICAL CENTER

For more information, go to: www.kmc-hi.org or www.facebook.com/KahukuMedicalCenter

**Na Wahine
o ka Hula
Mai Ka Pu'uwai**

**Sunday,
November 4, 2018
4 p.m.**

Waialua Bandstand

*Bring your mats and lawn
chairs and enjoy the show!*

www.waialuabandstand.com

YOU'RE INVITED TO
NEW HOPE HALEIWA'S

**FALL
FESTIVAL**

WEDNESDAY
OCTOBER 31

HALEIWA ELEMENTARY SCHOOL

*Free Food Games Candy
Trunk or Treat & Country Store*
6:30 - 8:30PM



**Council Chair Emeritus
Ernie Martin**

Serving You in District 2

On Saturday, September 29, a homeless man lying in the driveway of an office building died after being run over by a vehicle. The next day, a doctor walking his dog in rural Mokuleia was killed by a hit-and-run driver.

On October 10, a five-year-old girl was struck and killed by a garbage truck in a military housing reservation. The very next day, an 83-year-old man, described as a very careful and cautious person, was killed while trying to cross Pali Highway.

After the Pali Highway incident, the number of pedestrian fatalities rose to 33 for the year on Hawaii's roads. While it's not the record, it's not a record we should be pursuing.

Despite the fact there is no reliable evidence that shows what is causing it or what the solutions are, as a community we must make every effort to make our roadways safer, especially as our senior population continue to grow.

The City Council has adopted a number of bills and resolutions to help address this problem, but we cannot claim that the problem is solved.

One promising measure recently signed into law is to make Honolulu an age-friendly city. We will join the World Health Organization's network of age-friendly cities. It directs the City to create rules, policies, plans and urban design guidelines that focus on safety and fully incorporates thinking about aging populations.

A new measure, Resolution 18-219, introduced by Councilmember Ann Kobayashi, proposes a comprehensive strategy to eliminate all traffic deaths and severe injuries. Called Vision Zero, the concept was first implemented in Sweden in the 1990's and is credited with cutting the death rate for motorists in half and reducing pedestrian fatalities by 50 percent since 2000.

It's an ambitious goal, but the City Council welcomes the day when nobody dies or is seriously injured on our roadways.

VOTE

Tuesday, November 6, 2018

For polling locations visit:

<http://elections.hawaii.gov/>



**"We Specialize in Septic Systems" Design, Engineer.
Residential & Commercial Galvanized Steel frame New
Construction & Additions.**

Kitchen, baths & Whole House Remodeling.

Full Service General Contractor.

Call Steve for details. 808-216-9956.

Hawaii State License #32459

www.dumoreconstruction.com



Polynesian Treasures

Hawaii's largest selection of Polynesian handicrafts and Hawaiian inspired gifts.

North Shore Marketplace * Haleiwa, Hawaii
Open daily from 10 am * (808) 637-1288

WWW.PKBSWEETS.COM



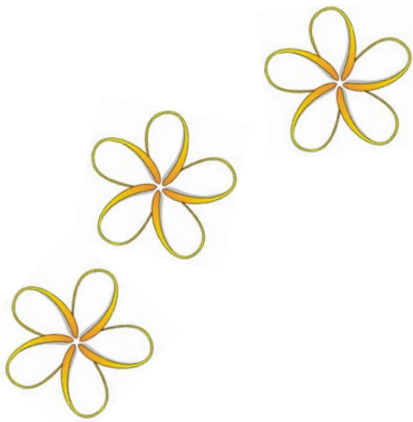
"Da Best"



**P
K
B** **AALAA
AI
BAKERY**

**OPEN DAILY
5:30am~7:00pm**

**STOP BY FOR THE PERFECT
HALLOWEEN SWEET TREATS!**



Carolyn Blanche Silva Hoopai of Waialua Oahu, passed away on September 21, 2018 in Ewa at the age of 80 born on September 30, 1937 in Waialua, raised in Mokule'ia attended and graduated from Saint Michael School Waialua during her grammar school through intermediate. There after went to Waialua High School and graduating from the Class of 1955.

Carolyn loved being there for her children and being a part of their school affairs where she joined the PTA and later becoming the PTA president for Waialua Elementary School during the late 60's and 70's. Carolyn later worked for the newly built IGA supermarket in Haleiwa Town as a cashier where she retired, then worked at Waimea Falls Park. Carolyn loved Hawaiian music where she enjoyed playing the ukulele and dancing hula. She loved cooking and hosting many family gatherings along with her extended family. Mom will be missed but her spirit of a kind and caring person she was will live forever in our hearts. Carolyn is survived by her Children Cheryl (Randall) Hoopai, David (Brenda) Hoopai, Joseph (Lauren) Hoopai Jr., Milton (Joslyn) Hoopai, Randall (Kehau) Hoopai, Carolyn (Steven) Murphy, Brother Henry "Heine" (Annie) Silva, many Grand Children, Great Grand Children and Keiki Hanai

Memorial Service will be on November 14, 2018 Wednesday at 8:30am Mililani Mauka Chapel, service at 10:30am, Burial at 1:00pm November 14, 2018 at Hawaii State Veterans Kaneohe.

IN STOCK
BLACK • GREEN • GALVANIZED
CHAIN LINK FENCE & PIPE


HAWAII FENCE SUPPLY
 808-682-3800 | HAWAIIFENCESUPPLY.COM

W A I M E A V A L L E Y S E E D E X C H A N G E



Hawai'i SEED & Slow Food O'ahu invite you to share • **Sunday, November 4th** • 8:30am-2:00pm

8:30am-12pm • Donations of Seeds and Cuttings Accepted
9am • The Origins of Hawaiian Bananas • Gabe Sachter-Smith
10am • Pule and Opening of Seed Exchange
& Keiki Garden Art Activities

10:30am • Local Seeds for Local Needs • Glenn Teves
11:30am • Diversity of Heirloom Kalo & Seeds • Anthony DeLuze
1pm • Growing Fruit Appropriate for Your Property • Mark Suiso
2pm • Seed Exchange Pau



Happy Arbor Day from the North Shore Outdoor Circle

Why should we celebrate Arbor Day?
Because it's a day with only one purpose -
to encourage us to plant a tree.

**Life could not exist on Earth
without trees.**

They provide the oxygen that we and
animals breathe, they store carbon,
stabilize the soil, and provide habitats for
the world's wildlife.

Join us: **October 29, 8am,**
Waimea Valley
Torch Ginger Alley Clean Up
Swim in the Falls.



Become a member at
www.outdoorcircle.org
Or Follow us on [FaceBook](#) at
North Shore Outdoor Circle
Keeping the North Shore
Clean, Green, and Beautiful

WWW.PKBSWEETS.COM

0 NO

A TREAT FOR YOU

**Try our yummy pumpkin pie for
ONE DOLLAR OFF
our regular price, good only
during the scariest month
of the year!**

THIS OFFER CANNOT BE COMBINED WITH OTHER PROMOTIONS, DABEST VIP CARD, OR OTHER DISCOUNTS. OFFER VALID BETWEEN OCTOBER 24 - NOVEMBER 6, 2018.



**Representative
Lauren
Matsumoto
Serving You in District 45**

Aloha Friends and Neighbors!

Mahalo to everyone who for participating in our Capitol Talk & Tour on October 10th! Although our district is quite the drive away, I was happy to be able to greet constituents from the North Shore to connect and share history and interesting facts about our state capitol, how constituents can get involved in our legislative process, and ended the day with light refreshments and a talk story session. I was also glad to see that more than 40 constituents of all ages from young keiki to our wise kupuna come to the State Capitol! Mahalo again!

As you may know, October is Breast Cancer Awareness Month. According to the Center for Disease Control (CDC), other than skin cancer, breast cancer is the most common cancer among women in America. One way to lower the risk of dying from breast cancer includes getting regular mammograms. The United States Preventative Task force recommends that if you are 50 to 74 years old, be sure to schedule a screening mammogram every two years. If you are 40 to 49 years old, consider talking with your doctor about when to start and how often to get a screening mammogram.

Most women who get breast cancer have no known risk factors and no history of the disease in their families. See below for symptoms of breast cancer:

- Any change in the size or the shape of the breast.
- Pain in any area of the breast.
- Nipple discharge other than breast milk (including blood).
- A new lump in the breast or underarm.

If you have any signs that worry you, please see your doctor right away.

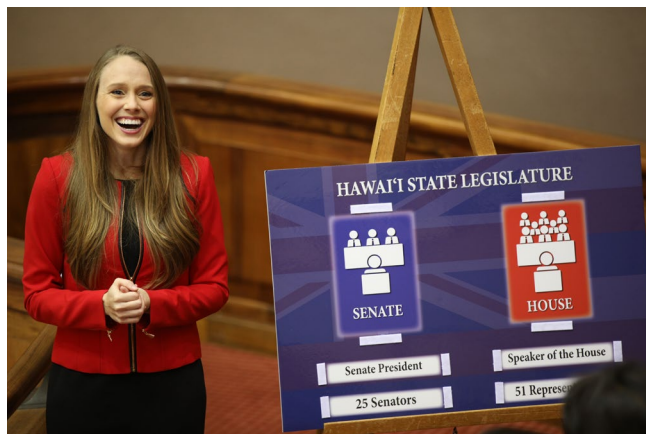
According to the CDC there are risk factors you can be aware of and some you can change:

- Not being physically active. Women who are not physically active have a higher risk of getting breast cancer.
- Being overweight or obese after menopause. Older women who are overweight or obese have a higher risk of getting breast cancer than those at a normal weight.
- Taking hormones. Some forms of hormone replacement therapy (those that include both estrogen and progesterone) taken during menopause can raise risk for breast cancer when taken for more than five years. Certain oral contraceptives (birth control pills) also have been found to raise breast cancer

risk.

- Reproductive history. Having the first pregnancy after age 30, not breastfeeding, and never having a full-term pregnancy can raise breast cancer risk.
- Drinking alcohol. Studies show that a woman's risk for breast cancer increases with the more alcohol she drinks.

As always, please feel free to contact me if you have questions or concerns about any happenings in our community. Call me at (808) 586-9490, email RepMatsumoto@Capitol.Hawaii.Gov, or visit RepMatsumoto.com.



Rep. Lauren Matsumoto, Capitol Talk & Tour

NEW LOCATION
67-016 Farrington Hwy, Waialua
next to Waialua Gas Station

SALE

5 Quart Oil Change Boxes	Regular \$3.35 ea
Quantity 5 for \$2.75 ea	Quantity 10 for \$2.40 ea
22 quart size also available	
Phone 637-5091 Fax 637-5008	

KUA'AINA

The Best!

• IN HALEIWA •
637-6067

• IN KAPOLEI •
674-4030

HALEIWA • KAPOLEI • TOKYO • LONDON

Talking Story with Tom Jacobs

Happy Birthday, Kahuku Medical Center

Happy Birthday, Kahuku Medical Center. And, how old are you? What? Next year you will be ... 90 years old?

Yep. In 1929 the medical center opened its doors to service the Kahuku sugar plantation workers and the North Shore community as "Kahuku Hospital." It was the first and now is the oldest medical facility on the North Shore, still providing first-rate emergency and follow-on medical service to its community.

But the medical center celebrates another milestone. A November 15, 2008 Honolulu Advertiser article, ten years ago, was entitled, "Kahuku Hospital closing Dec. 31." After six years of operating in the red and \$3 million in debt, the hospital's board had reluctantly decided to close up shop. Dr. Richard Price, head of the hospital's ER, was quoted in the article as saying, "A lot of people are going to die needlessly." He pointed out that the hospital's closing would leave the 22,000 residents between Kualoa and Waimea Bay with one ambulance and no on-site medical service, saying that the area's biggest loss would be lack of an emergency room. The hospital intended to file for bankruptcy, the article said.

So ... what happened? Well, the hospital didn't close. It changed its name. Kahuku Hospital became Kahuku Medical Center, moved to a new, modern building (see photo) and continued a somewhat limited but still caring, professional array of medical services to the community. Now, ten years after the name change, the medical center will celebrate its ten year, and 90-year, anniversaries on October 27th with a civic birthday party celebration at the center, with entertain-

ment, food booths, and exhibits, from 10 a.m. to 2 p.m.

Which is why I found myself hiyako-ing down Kam Highway to Kahuku to call upon Alan MacPhee, the new (well, in the saddle since January) Chief Executive Officer of the center. He was friendly, informal, and clearly a happy Kahuku resident. A long-time medical services professional, he left as CEO of a modern hospital in Mariposa, northern California (near Yosemite Park) to take this new job. Why? A new challenge, a change of scenery, a sense of adventure ... in spite of leaving three children, a step-daughter, and four grandkids on the mainland and the vicissitudes of leaving a 2,400 square foot home and squeezing into 800 square feet. Still, MacPhee loves the new job, the challenge, the rural community, and he and his wife love their new ocean-oriented, outdoor lifestyle.

He is clearly enthusiastic about the changes already made to the Medical Center and the ones to come. After an 18-year absence, a new, modern mammography machine will show up next month, joining modern X-ray and CAT-scan, ultrasound, and EKG equipment. The Center offers a modern, six bed emergency room in addition to 21 standard hospital beds, and has added occupational therapy to an increasing list of services.

What are the plans for a celebration of the Center's twin anniversaries? MacPhee introduced me to Wesley Johnson, his public relations, IT, and public relations guy, who turned out to have a very personal relationship to the Center: he was born there, in the days when the "hospital" offered maternity services. Wesley was just beginning the organization of local talent and events for the anniversary celebration, which looks promising.

So I left Kahuku with a new appreciation for a dedicated staff of doctors, nurses, and admin/support staff and, after almost 90 years, an October 27th birthday celebration.



Kahuku Medical Center. Photo: Scott Ishikawa, Becker Communications



North Shore Chamber of Commerce News

CHAMBER SPOTLIGHT – MARK THE DATES!

It's a busy time of year for the North Shore Chamber of Commerce with Pau Hana and Christmas events quickly approaching. Note the dates on your calendar, and join the community in these educational, networking, and festive occasions. If you have questions about any of these events, OR have upcoming events that you wish to have advertised and posted on our website www.gonorthshore.org, please contact us via email, info@gonorthshore.org; or call our office at 808-637-4558.

Rescheduled Pau Hana Symposium

The Chamber Pau Hana Social Media Symposium, postponed last month due to Hurricane Olivia, is rescheduled from 5-8 pm. Wednesday, Nov. 7, at the Waiialua Community Association across from the Haleiwa Post Office. Admission is free to all Chamber members; \$10 for nonmembers. Refreshments will be served. Please register, even if you've done so previously, by going on the web to the link <https://www.facebook.com/events/1095574640604174>.

The program will consist of 10 to 15-minute presentations from: Alicia Michioka, Digital Media Manager for KHON2, "Social Media Advertising vs Boosting"; Ashlyn Tengan, owner of Smarter Moms Online, "Use Facebook Groups to Generate More Sales"; Jessica Gellert, owner of Gellert Media, "Let Instagram TV Boost Your Business"; and Emma Wo, owner of The AlohaBabe.com, "Build a Content Calendar that Speaks to Your Audience." A 30-minute audience question and answer panel discussion will follow. The remainder of the evening will be devoted to networking and socializing.

Annual Christmas Party

Our 2018 Christmas Party and Auction is scheduled 6pm, Wednesday, Dec. 12, at Waimea Valley. The Kama'aina of the Year honoree is Glenn Lee, head coach of the Waiialua Robotics Team, which has earned an international reputation in the robotics community. His team now competes in six tournaments in the US and internationally each year, and meets at more than 20 tournaments statewide. This year marks Glenn's 25th year working at Waiialua High & Intermediate School and the 20th year of the Waiialua Robotics Team.

This event is the Chamber's main fundraiser of the year. The community's involvement has been key in continuing Chamber support of businesses and making improvements to our area. Chamber volunteers are currently hard at work gathering table sponsors and soliciting for auction gift items. Either sponsoring a table or donating a gift at this well-attended fun event

is an excellent way to showcase your business and display your community support.

Haleiwa Christmas Parade

The 18th Annual Haleiwa Town Christmas Parade is scheduled 6-8pm, Friday December 14, starting at Weed Circle and ending at Haleiwa Beach Park. Entries include marching bands, scouts, drill teams, paniolo groups, floats, decorated cars, clowns, and various other exhibits celebrating what makes the North Shore special. Everyone is invited to participate. Parade entry application packets are available by contacting the Chamber office no later than Monday, December 3. The fees are: \$30 for commercial entrants, \$15 for civic groups or nonprofit groups, and free for schools and youth groups. This fee is to help defray the insurance and other costs of the parade.



GREAT AMERICAN READ MOVIE TIE-IN READY PLAYER ONE

Rated PG-13

**Tuesday, October 30
5:00 - 7:30 pm**

Based on Ernest Cline's bestseller, Ready Player One is about "a poor teen who competes in a contest to win control of a virtual-reality world called the OASIS."

The Great American Read is a partnership between PBS Hawaii and the Hawaii State Public Library System. The program is happening now through Tuesday, October 23, 2018.



SOCIAL MEDIA SYMPOSIUM

Wednesday November 7th @ 5 p.m.

66-434 Kamehameha HWY, Haleiwa, HI 96712
5-8 pm

More info @

www.gonorthshore.org

Get tickets at www.facebook.com/events/1095574640604174



Join the North Shore Chamber of Commerce for a fun and interactive "Social November" & Pau Hana Event Wednesday November 7th from 5 pm to 8 pm at the Waiialua Community Center and North Shore Chamber of Commerce building in Haleiwa. Social Media "Gurus" will be sharing their favorite marketing tips and

suggestions with attendees. Each will present on their favorite topic and then they will answer questions from the audience. Immediately after please enjoy light pupus & wine while mixing and mingling with the panel. Cost is free for members, \$10 for non-members.



VOTE
**SEAN
QUINLAN**

State Representative

DEMOCRAT

• **MAJOR LEGISLATION**

Tour bus enforcement, abandoned vehicle removal, and the largest tax break for working families in decades.

• **FIGHTING FOR YOU**

Voted NO on rail more than any legislator in the state. Continues to fight against unsightly wind farms.

• **COMMUNITY ORGANIZER**

Together we raised \$140,000 to build a new basketball court at Shark's Cove.

HONORED TO SERVE

FACEBOOK/INSTAGRAM - VOTESEANQUINLAN

www.voteseanquinlan.com
paid for by Friends of Sean Quinlan

A Year of Firsts for Haleiwa Non-Profit!

As Malama Loko Ea Foundation approaches their tenth anniversary of serving community, they are constantly reaching out for new ways to raise funds to help keep operations going along with commitment to sharing Hawaiian culture, fishpond education, land stewardship, and community building. To date, they've served well over 35,000 guest learners and volunteers (and counting!). This has been a year of firsts for Malama Loko Ea Foundation.

In addition to the 1st Annual Loko Ea 8K Run and Walk and 'Ohana Fun Day in March, people from all over Oahu (and Washington, D.C.!) gathered for Loko Ea's 1st gala dinner fundraiser, Seafood & a Sunset on a beautiful Saturday evening. Held on the private grounds of Pua'ena Point Beach on a historic WWII runway, this event was part of Malama Loko Ea Foundation's fundraising initiative to deepen Loko Ea, Haleiwa's over 400-year-old Native Hawaiian fishpond, to historical depths for optimal fish growth. Guests rocked to the sounds of Shawn Garnett of Hawaii Five-0, Rex Baccay and Persuasion (with surprise performance by Nalani Jenkins of Na Leo Pilimehana), and DJ James Coles. Featured Chefs Reno of Fresh Catch, Leroy of Flyin' Ahi, and Jen of Jen's Catering dazzled guests with their culinary creations.

Malama Loko Ea Foundation would like to send our heartfelt mahalo to the following sponsors, donors, community partners, and volunteers:

Na Ali'i Consulting and Sales

Geotech Solutions

Hydro Blast Tech

Kamehameha Schools

Hawaiian Steam

The North Shore News

Steve's Gardening Service

Paradise Landscaping

Chef Reno

Flyin' Ahi

Jennifer of Jen's Catering

Mari's Gardens

Enterprise Rent a Car

Hawaiian Airlines

Dael Lunasco

Rex Baccay

Shawn Garnett

Edwin Ramones

Ben Pascua

Gary Omalza

Eleutrio Amper

Waialeale Kapali

David Adler

Ron Nichols

Surf N Sea

Akahi Solutions

Old Sugar Mill Brand

North Shore Soap Factory

Firestone Walker 805 Brewing Company

Lagunitas Beer

Adam LaCagnina

Enviroservices & Training Center

Paalaa Kai Market

Matsumoto Shave Ice

Honey Girl Organics

Big Island Candies

Patagonia

Haleiwa Bottle Shop

Derf Ibrao

Jerry Driscoll

Tanya Uyehara of Laha'ole Designs

Maile Girl Designs

KHON Living808

Rix Island Wear

Kahala Hotel & Resort

Johnson Brothers Hawaii

Altres Staffing

Rita Chang & Bill Quinlan

North Shore Embroidery

Tim and Ye Tybuszewski

John Amundson Works

Joe Green

Leah Koonce White

Tisha Louis

Tehani Louis-Perkins

Tahitoa Louis-Perkins

Pono Estores

Pono Fisher

Kawaihoa Loui

Kawela Farrant

Makua Perry

Nola & Linda Nahulu of Bete Mu'u

Leo Bitte

I Nui Ke Aho

Kori Lynn Kapaona

Pacific Party Rentals

Jay of Eco Wash Hawaii

Tony Morlock

TIP Culinary Students

Chuck Babbitt Photography

North Shore Woods

For more information on how you can support or learn more about Malama Loko Ea Foundation, please visit our website at lokoea.org.

WAIALUA FARMERS' CO-OP MARKET



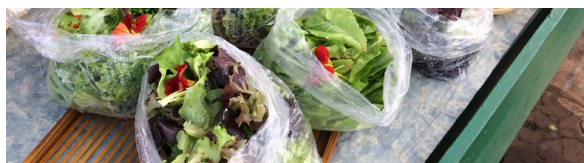
WAIALUA SUGAR MILL GROUNDS
SATURDAYS 8:30 A.M. – 1:00 P.M
BUY DIRECTLY FROM FARMERS
TWIN BRIDGE FARM * MOHALA FARM
FIELDS OF ALOHA * RASA FARM
JSC FRESH MARKET *HENIE P. PRODUCE
FRESH AIR FARMS * CANDIDO PRODUCE
WK PRODUCE * AUNTY EDITH FARM

LOCAL PLATES & SNACKS

MANDY'S MUNCHIES
SOAK & SMOKE: POKI & FISH PLATES
FRANCIS BARBQ CHICKEN

ALOHA GIFTS

UNEARTHED DESIGNS AIR PLANTS
GREEN TEA HAWAII *WAIALUA CAPS
NORTH SHORE HAWAIIAN HONEY
KUKANA GOODIES: JAMS AND PEANUT BUTTER
DERIVE BOTANICALS: HYDROSOLS & SEA GLASS
A MARKET MANAGED BY FARMERS



Hawaii Public Schools Seek More Local Farmers to Supply Fresh Produce For Students Meals

The Hawaii State Department of Education (HIDOE) is seeking more local farmers and vendors to supply fresh produce for student meals on their island, with an emphasis on locally grown fruits and vegetables. This is part of the Department's efforts to introduce fresh, locally grown products in student meals through its 'Aina Pono programs, including Farm to School and Harvest of the Month.

"Our students have shared with us how they enjoy eating fresh, local ingredients in their school lunches," said Superintendent Dr. Christina Kishimoto. "We want to continue serving these healthy meals to our students through our 'Aina Pono programs. In order to do that, we need to grow and expand our partnership with Hawaii's agriculture community.

During the next two weeks, HIDOE will be hosting produce solicitation pre-bid meetings for local farmers and vendors across the state. Representatives from the Lieutenant Governor's office, HIDOE's School Food Services Branch (SFSB), HIDOE's Procurement and Contracts Branch, Hawaii Department of Taxation, and Hawaii Department of Commerce and Consumer Affairs will be available to answer questions at the following meetings on Oahu:

Monday, October 29, 4:30-6pm
Hawaii State Capitol Auditorium
415 S. Beretania Street, Honolulu

Tuesday, October 30, 4:30-6pm
Kalaheo High School Library
730 Iliaina St, Kailua

World Surf League (WSL) Hawaii looks forward to the upcoming winter surf season, and would like to thank our local vendors, beneficiaries, and community partners for their continued support:

AccesSurf Hawaii	Hybrid Design
Big Wave Risk Assessment Group (BWRAG)	Na Kama Kai
Cholo's	North Shore Chamber of Commerce
Christensen Bros. Construction	North Shore Community Land Trust
City & County of Honolulu Lifeguards	North Shore Lifeguard Association
City & County of Honolulu	North Shore Marketplace
Department of Parks & Recreation	North Shore News
Cutter Auto Group	Oahu Tree Works
Doc Bailey Cranes & Equipment of Hawaii	Pacific Biodiesel
Farrington High School	Paradise Lua
Freesurf	Southwest Airlines
IL Gelato Hawaii	Spectrum
Kanaka Solutions	Sterman Realty
Ke Nui Kitchen	Sunset Beach Elementary School
KT Protection Services	Surf News Network
Habilitat	Surfrider Foundation Oahu Chapter
Hawaii Modular Space	Sustainable Coastlines Hawaii
Hawaiian Island Creations (HIC)	Turtle Bay Resort
Hawaiian Water Patrol	Viking Power Generator
Hawaii Youth Surfing	Waialua Surf Club
Development Organization (HYSDO)	Woods N Trophies
Hurley Surf Club	WSL Experiences on Airbnb Hosts

And last but never least, our incredible team of more than 200 local independent event staff – the backbone of our seasonal operations.

Mahalo!



Reach out anytime to our regional team at hawaii@worldsurfleague.com



North Shore Surfing Wireless Betty Depolito - banzaibetty.com

BARRON MAMIYA IS REGIONAL JUNIOR CHAMPION

Remember the name Barron Mamiya. Mamiya has earned the regional Junior Champion title. He now will represent Hawaii and the North Shore in the World Junior Championship in Taiwan in December. The last event, The HYSDO, the Hawaii Youth Surfing Development Organization, Pro Junior at Turtle Bay was a great ending to the season for the juniors. The final was a buzzer beater with Mamiya leading most of the way, then bam! Boards started flying into the air and surfers reared their radical heads performing tail slides, 360 air maneuvers and insane off the lip turns in pretty epic 3-6 foot surf. In the last 20 seconds Maui's Eli Hanneman snuck into an inside roller and got the win. "I am super stoked to win. I didn't think there would be another opportunity because there were seconds left and then a wave rolled in under everyone and I picked it off and it had a big ramp on the inside. I went for an air and I made it," he said to the WSL afterwards. The North Shore's Wyatt McHale took the 3rd spot and our own Finn McGill the reigning Junior World Champion 4th. In the women's division Keala Tomoda-Bannert from Kauai took the win. The North Shore's Luana Silva took third and a 14 year old surfer from Wailua, Angelina Yossa made the semis launching her into a 6th place overall finish on the Junior regional tour. Congrats to all. Find more results on the WSL.com website!

THESE LOCAL WAHINE RIP GIANT WAVES CHECK UM OUT!

The Red Bull Queen of the Bay is in it's waiting period and pray for surf for these ladies who charge the biggest waves they can find! Listed below is the Hawaii contingent that are invited to this historic event. The Women's Waimea Bay Championship is the first of it's kind, an all Women event at our beloved Waimea Bay! Personally I want to thank our whole community for letting me organize this event. I know surf contests sometimes cause problems for us but we plan on doing our best to make sure that it has a great effect on our North Shore Community. Please if any concerns, yell at me, banzaib@hawaii.rr.com. The Red Bull crew and I will do our best to bring a great opportunity to our community and our Wahine that deserve a chance to shine! Mahalo!

Jamiliah Star / Hawaii

<https://www.instagram.com/jamstarsurf/?hl=en>
<https://www.facebook.com/jamilah.starr>

Sheila Lee / Hawaii

<https://www.instagram.com/sheilaslee/?hl=en>
<https://www.facebook.com/sheila.lee.963>

Keala Kennelly / Hawaii

<https://www.instagram.com/kealakennelly/>
<https://www.facebook.com/kealakennellyofficial/>

Paige Alms / Hawaii

<https://www.instagram.com/paigealms/?hl=en>
<https://www.facebook.com/paigealms>

Emily Erickson / Hawaii

https://www.instagram.com/emi_erickson/?hl=en
<https://www.facebook.com/EmiNoelani>

Kelta O'Rourke / Hawaii

https://www.instagram.com/kelta_orourke/?hl=en
<https://www.facebook.com/>

Makani Adric / Hawaii

<https://www.facebook.com/makani.adric>

Bethany Hamilton / Hawaii

<https://www.instagram.com/bethanyhamilton/?hl=en>
<https://www.facebook.com/SurferBethanyHamilton/>

Brittany Gomulka / Hawaii

<https://www.instagram.com/bigwavebrit/?hl=en>
<https://www.facebook.com/surfgirlbrit>

Wrenna Delgado / Hawaii

https://www.instagram.com/shangri_frah/?hl=en

Siri Masterson / Hawaii

<https://www.instagram.com/sirimasterson/?hl=en>
<https://www.facebook.com/siri.masterson>

Kiyomi Sheppard / Hawaii/Japan

<https://www.facebook.com/kiyomi.sheppard>

Blake Leftco

Momo Sakuma

https://www.facebook.com/momo.sakuma?ref=br_rs
<https://www.instagram.com/kaiano07/>

MAYA GABIERA MAKES HISTORY, RIDES BIGGEST WAVE

Brazilian surfer Maya Gabiera stuck to her guns and got an approval to be in the Guinness World Record Book for riding the biggest wave ever ridden by a Woman. The wave was ridden in Portugal at Praia do Norte, Nazaré, on January 18, 2018. The wave was estimated at 68 feet! This is an amazing accomplishment because Maya almost died there in October, 2013. She is no stranger to awards. She won the ESPY award for best female action sports athlete and a teen choice award for best action sports athlete. She has also won XXL big wave awards for "Women's Overall Performance". Might she be "Queen of the Bay"? She is definitely a contender and will compete in the event! A BIG congrats to this Wahine who constantly is breaking the norm in Women's sports!

WAIMEA FALLS PARK NEEDS VOLUNTEERS

Waimea Falls Park needs some help for their environmental conservation and forest restoration efforts. They are engaged in cultural preservation as well. Waimea Valley is one of the North Shore's sacred areas and we sure do want to preserve the aina and all of our traditional Hawaiian cultural practices. That is what their mission is! They are reaching out to private businesses, schools, civic clubs, non profit organizations and you to help support their volunteer opportunities to protect the precious aina there. Go to <https://www.waimeavalley.net/volunteer> for more info. We will see you on the slopes at Waimea Valley!

Mahalo! Please email banzabi@hawaii.rr.com with news info and comments!



International Karate Federation Waialua Dojo students win 25 medals at the 2018 Martial Arts Karate Tournament. Row 1: Peter Shono, Masyn Onizuka, Karyssa Redira, Prestyn Amper, Peityn Tantug and Reagan Morton Row 2: Brennan Eason, Haley Baccay, Sensei Billy Binz, Paetyn Amper and Antonio. Missing are Rebecca Shono and Glenn Wheaton



Haleiwa Store Lots*
 *Keiki Halloween Costume Contest and Trick-or-Treating Sunday, October 28, in the Kamehamalu Courtyard. There will also be trick-or-treating at participating stores. The Keiki Costume Contest registration, is at 2pm for three age groups: under 3, ages 4-8, ages 9-12. The contest begins promptly at 4pm.

Mahalo from the North Shore Food Bank to Brooke Benson and Sydney Patrick for donating shoes from YMCA Camp Erdman.



RED READER FOR LIFE

56-490 Kam. Hwy. #293-8935 M, W, Th: 9 - 5 pm; Tues: 12 - 8 pm; Fri: 9 - 3 pm
Hawai'i State Public Library System www.librarieshawaii.org

NOVEMBER 2018

Program Sponsors: Friends of the Library Kahuku.



FILM FEST HISTORICAL KO'OLAULOA FOOTAGE

Tues., Nov. 13 2:00-7:30 pm

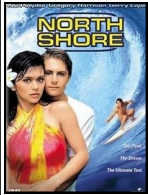


2:00 pm - *Paradise Hawaiian Style*

3:30 pm - *North Shore*

5:30 pm - *Johnny Lingo*

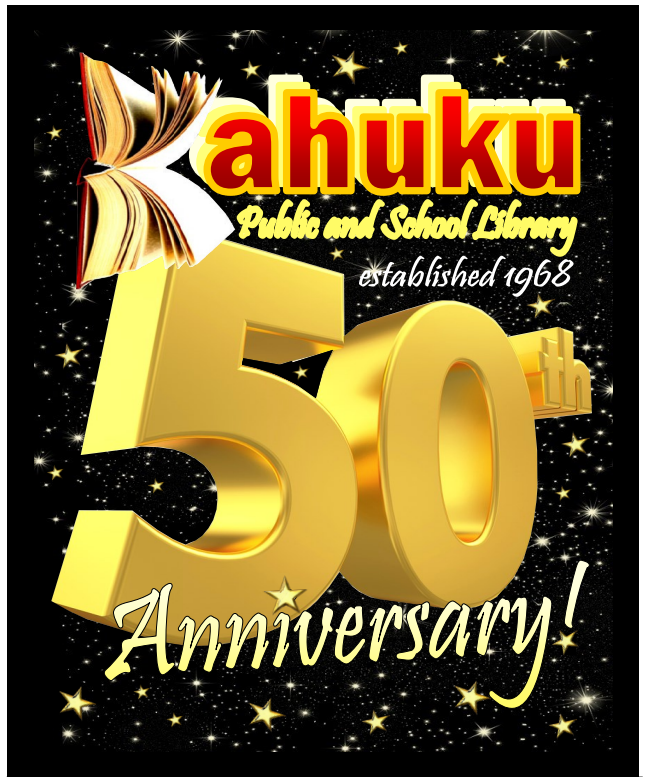
Angel Ramos - Walking Tour
Kahuku Library-State of Art
Triumphant Survival...Mill



6:45 pm - Guest Speaker

P. Koa Luke, 'Ulu'ulu Archivist

7:00 pm - *Windward Passages*



Tues., Nov. 27

4:00 - 8:00 pm

4:00 pm Music by *Vaihi* (KHIS Alumni)

5:00 pm Mingling and pupus

5:30 pm *Ke Kula Kaiapuni Hawai'i o Kahuku* *

JROTC Color Guard * *Vocal Motion*

Kahuku High Pep Band * *Kokua Fdn*

6:00 pm *St. Roch Filipino Dancers*

7:00 pm Music by *A Touch of Gold*



PLANTATION LIFE WOMEN'S PERSPECTIVE

Tues., Nov. 20

5:00 pm

Historical talk story about Kahuku Sugar Mill Plantation from the Women's Perspective. Panel features:

Josephine Balanay-Faustino (pictured above) * JoJo Caban-Manapon * Rena Kashiwamura-Stant * Aggie Pereira-Tani * Conchita Sacil-Waters (pictured right) * Bernice Ramos-Clark * Gloria Padilla Bennet * Margaret Primacio * Andrea Canada Renaud

Door prizes and refreshments

Kahuku: Survival of a Plantation Town



FREE KEIKI BOOKS while supplies last for KPSL's 50th! Come in during the month of November and select a book from a variety of titles for babies all the way up to 6th grade.

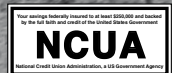
RED READERS 4 LIFE!!!

WAIALUA FEDERAL CREDIT UNION

HOME EQUITY LOAN

3.75% APR*

CALL US (808) 637-5980 OR VISIT US WWW.WAIALUAFCU.COM



*Annual Percentage Rate based on an index of 3.50% plus the monthly average of the 26 week Treasury Bill (Auction High) and may be adjusted annually each March. Please call for more details.

BULLETIN BOARD



KATHI LEE ALBIAR
OWNER/BROKER - RB 17327

808-358-4139
KATHI@ALBIARREALTY.COM
WWW.ALBIARREALTY.COM

SALES & PROPERTY MANAGEMENT SINCE 1993

LIC. #AC 18275



COWPER CONSTRUCTION

GENERAL ENGINEERING CONTRACTOR

Full Service Sitework Contractor

Septic Systems & Tanks
Since 1978

Michael Cowper 638-7200
cowperhawaii.com



Quality Cigars Sold Here

808-637-1750

66-521 Kam Hwy, Suite B
Haleiwa, HI 96712

northshoresmokeshop.com



Adoption, Foster & Intake

adoption@oahusPCA.com
intake@oahusPCA.org
808.754.1519

823 Olive Ave
Wahiawa, HI 96786



facebook.com/SPCA.Oahu [@OahuSPCA](https://twitter.com/OahuSPCA) <http://oahusPCA.org>

"THE BULLETIN BOARD THAT IS IN EVERYONE'S HOME"

BULLETIN BOARD



Featuring the largest selection of certified organic produce on the North Shore.
 No panic...ours is organic.
 Open 7 days.
 Mon.-Sat. 9am-7pm.
 Sun. 9am-5pm

66-445 Kam. Hwy
 Haleiwa, Hawaii 96712
 Next to the Post Office
 808-637-6729 • 808-637-1922 fax

LTC

Laie Trucking Company, LTD

* Ready Mix Concrete * Recycled Aggregates
 * Pump Service * Hauling * Equipment Rental

PH: (808) 293-8710
 P.O Box 121
 Hau'ula, HI 96717

PH: (808) 293-1296
 FAX: (808) 293-2890
 laietrucking@hawaiiantel.net

"A LOCAL COMPANY, BUILDING A LOCAL COMMUNITY"

N-C PLUMBING & SUPPLY

Cont. Lic. No. C-8913



- RESIDENTIAL & COMMERCIAL SALES & SERVICE
- CONTRACTING & DESIGN • HOME PLUMBING SERVICE
- PLUMBING FIXTURES, HEATERS • FREE ESTIMATES

Nestor P. Calilao (Owner)
 P.O. Box 769
 Waialua, HI 96791

Bus: 637-8662
 Res: 638-5157
 Cellular: 372-8718

BOW WOW BUNGALOWS

Licensed Boarding Kennel
 North Shore, Oahu

Reasonable Rates
 Ph. 637-2562

These Dogs Have Fun!



LILIKOI NATURAL HEALTH

MEDICAL CANNABIS CERTIFICATION
 HEALTH AND WELLNESS EVALUATIONS

BOOK YOUR APPOINTMENT ONLINE
 66-216 FARRINGTON HIGHWAY, SUITE 202
 WAIALUA HI 96791 T: 808.321.2352

OUR PASSION IS YOUR WHOLE BEING
WWW.LILIKOIHEALTH.COM

Linda Yadao

BASI CERTIFIED
 PRIVATE PILATES EQUIPMENT CLASSES

808.637.1230
 lindayadao@gmail.com

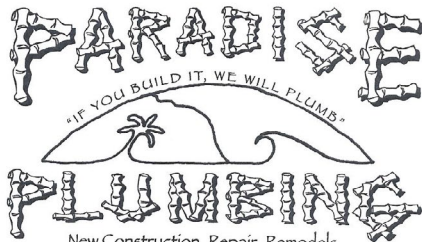
Maluhia Place
 A PILATES SPACE

Munden Design & Build

Lic.#BC19632

Design • Plans • Permits • Construction
 Additions & New Residences
 808 391-8616

Providing quality work since 1978



Dale Christensen C-29856 (808) 368-1473

New Construction • Drain Cleaning
Got Leakz? Call Greekz!
 Line Locating • Copper • Galvanize

 372-1820
Greekz Plumbing
 #C-32939
Plumbing Service & Repair

Greekz Plumbing

License# C-32939
 Phone 372-1820

School of Champions

Established 1966

International Karate Federation



IKF Waialua Dojo
 Waialua Elementary School

Beginner classes - ages 5 & up
 Mon & Wed 5:00 - 6:00 pm

Intermediate classes
 Mon & Wed 6:00 - 7:30 pm

Call 780-5457 or email: wvbinz.bb@gmail.com



Striking Marriott hotel workers receive support from Local 5 Turtle Bay Resort workers on October 16, 2018 in Kahuku. #Relayfor1job

Friday October 26, 2018 · 5:00pm - 9:30pm · Turtle Bay's Kuilima Point Lawn

TURTLE BAY FOUNDATION

HOWL-O-WEEN PUP & FAMILY MOVIE NIGHT

Suggested Donation: \$10 Per Person
Entry to Event Includes

- Bouncy Houses • Entry to Costume Contests •
- Movie on the Lawn (Bring Your Own Blankets or Low-Back Chairs) •

Costume Contests
Starting at 6:30pm with Awards and Prizes for

- Best Group Contest • (Families, Friends, Pups)
- Cutest Pup Costume •
- Ugliest Dog Contest •
- Kids Costume Contests • (ages 3-6, 7-10, and 11-14)

Outdoor Movie
Begins at 7:15pm

Also Enjoy

- Refreshments • Treats •
- Cotton Candy • Popcorn •
- Glow Toys • Prizes •
- Pup Psychic Readings •

Hosted by Pono, Turtle Bay's Canine Ambassador as "Bruno Paws"
All proceeds to benefit the Turtle Bay Foundation.

PIONEER AIDE Hardware

Donors Needed on Oahu this November

The Blood Bank of Hawaii invites you to give thanks this season by making an appointment to donate blood. You never know whose life you will save. To make an appointment or for more information call Blood Bank of Hawaii at (808) 848-4770 or visit BBH.org.

Wahiawa General Hospital Bloodmobile
Friday, November 2, 7:30am-11:45am

Waiialua Intermediate & High School Gym
Friday, November 2, 7:45am-2:30pm

BYU Hawaii- Ballroom
Thursday, November 29, 9:00am-4:00pm

BYU Hawaii- Cannon Ctr -Bloodmobile
Friday, November 30, 9:00am-4:00pm

Blood Fact: 200 blood donations are needed every day in Hawaii to maintain an adequate blood supply and fulfill Hawaii's needs.



**North Shore Food Bank
Food Bag Distribution**
1st & 3rd Wednesdays 10am - 12pm
Waiialua Community Association
Donations of non-perishable canned foods can
be dropped off at the North Shore News office.
For more information: 637-3138



Waiialua Public Library
UPCOMING EVENTS
67-068 Kealohanui St, Waiialua, HI 96791
637-8286

Used Book Sale
Saturday, November 17, 9am-2pm
Weather Permitting

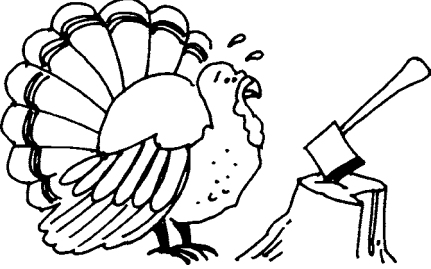
Writers' Group
Saturday, November 17, 11am
Topic: "Life in the 22nd Century"

Readers' Group
Thursday, October 25, 9:30-11am
Piece of the World
by Christine Baker Kline

Recurring Events
Toddler Time - Fridays, 10am
Storytime - Saturdays, 10am
Computer Instruction (by appointment)

 **Pumpkin Art** 

One-of-a-kind pumpkins created by
Waiialua Elementary 1st graders will be
on display mid-October to Halloween.



GOT TURKEY?

North Shore News, Waiialua Community Association and the North Shore Food Bank will be sponsoring a Thanksgiving meal for the community. Once again we are asking for turkey & monetary donations. Donate a frozen turkey or sponsor a turkey for \$25.

Donation deadline is Monday, November 19, 2018. Please call before dropping off at the North Shore News office.

Checks can be made out to:
North Shore News
66-437 Kamehameha Hwy. #210
Haleiwa, HI 96712

Call 637-3138 or 780-8037
for information.

Haleiwa Evangelical Mission International

 Come and join us
Sunday's at Waiialua
Elementary School Cafeteria

Sunday School at 9:00 am
Worship Services at 10:00 am

For Prayer
Call 637-4567

 Blessed to be A Blessing



"Children's Church"

North Shore News  **2018 Schedule**

PUBLICATION DATE	EDITION	DEADLINE DATE
November 7	#22	October 26
November 21	#23	November 9
December 5	#24	November 23
December 19	#25	December 7

Direct-Mailed to Every Home
MOKULEIA · WAIALUA · HALEIWA · KAHUKU · LAIE
Every Other Wednesday 12,000 copies
"The North Shore's most popular publication" since 1970
(808) 637-3138 · NSNHaleiwa@gmail.com · NSN4Linda@gmail.com
www.northshorenews.com



CLASSIFIEDS

The North Shore News is published every other Wednesday and mailed free of charge to all North Shore homes and businesses. Extra copies may be obtained at our office.

PRESS RELEASE POLICY: Submit press releases in person, mail or email to Editor, North Shore News, 66-437 Kam. Hwy., Suite 210, Haleiwa, HI 96712. Please type your releases and keep them shorter than 200 words unless they are of an unusual news interest. Releases should be viable news stories and are published on a **space available basis only**, with priority given to those received in our office first. You may attach photos. We are not responsible for the return of any photos. All materials are submitted at owner's risk. We reserve the right to edit and/or refuse all submissions including advertising.

EDITORIAL POLICY: We welcome articles and letters from our readers. Letters to the Editor are published on a space available basis only and preference is given to shortness of length, and quality of content. We prefer to run not more than one letter, per person, per 6 month period. Letters subject to edit.

Views expressed by our contributing writers and advertisers do not necessarily reflect the view of the management and staff of the North Shore News. All rights reserved. Reproduction in whole or part without permission is prohibited. © 2018.

Editor & Classifieds
Linda Seyler

Typography
Downtown General Store

Web Social & Digital Ads
straffordmedia.com

Contributing Writers
Tom Jacobs
Betty Depolito
City Councilman Ernie Martin
State Representative Lauren Matsumoto
Senator Gil Riviere

Photography
Banzai Productions



Please recycle this newspaper.

SERVICES

SHORE ELECTRICAL SERVICE
New Const-Remodels
638-0049 / Lic#C20777

Computer Problems?
I can fix any MAC or PC.
Chris 371-3089

Andres Plumbing
All your plumbing needs
808-256-7337 Lic#C24500

Carpentry & Painting Services
Repairs/Remodeling,
Termite Rot, Doors, Cabinets,
Countertops, etc.
Reasonable Rates 271-6584

Green Gypsy Thrift Shop
Waiialua—(808) 366-4000
Next to Paalaa Kai Bakery

Dog/Cat Nail Trimming
At your home—only \$20.00
Call 808-388-5336

Sabrina Zander Photography
Makeover and Portrait Studio
www.sabrinazander.com
Call for a consultation 808-589-8854

CS EuroCars Kapolei Mercedes Repair Shop
with low labor rates
ASE Certified Technician
27 years experience
2116 Lauwiliwili St. Unit 104F
Kapolei, HI 96707
808-682-1957

paintpaina.com

Hawaiian Style Paint Parties!



Call 808 781-2218



Like us on Facebook:
[Facebook.com/NSNewsHaleiwa](https://www.facebook.com/NSNewsHaleiwa)

Paumalu Electric Inc.
C 18074

Residential & Commercial
New Installation & Repairs
Renovations. Remodels
Electric Meter Replacements

Dave Hancock 638-9054

Hawaii Tree Co.
Trimming & Removal
Professional-Reliable
Free Estimates
462-2749

North Shore Car Rentals
Low cost rental cars.
Rates are low by providing
slightly older cars with a
"local" vibe to them, don't
be fooled. All vehicles are
well maintained and safety
inspected. please visit
northshorecarrentals.com or
call (808) 260-4960.

Radiant Skin Care & Waxing
Aynjul Benigno
Licensed Esthetician
Call or Text 808-222-8124
radiantskincaresandwaxing.com
66-935 Kaukonahua Rd.,
Waiialua

Aloha Computer
PC/MAC Repair/Virus Removal
Fax/Copy/Internet Access
Located next to Paalaa Kai Bakery
Open M-S, 10-4.
372-2667 or 237-4558

GERMAN CAR SERVICE
Professional-Qualified
Technician
Call Gary
637-6800

BIKRAM YOGA
Dawn Patrol
6AM CLASSES
Mon & Wed, starting 11/5
637-5700

HARVEY'S TOWING LLC
24 hr Towing Service
Lockouts, Jumpstarts &
Recovery. Specializing in
opening locked car doors.
Call anytime 478-0333

Your Clean Home
Vacation/Residential
Home Cleaning & Laundry
Affordable • Reliable
• Green Cleaning
For Free Estimate
Call 728-5035

WHY KNOTT
FLORIST
Waiialua Shopping
Center
637-9380

LEARN TO SWIM
AT THE
HAWAII SWIM
SCHOOL
ON THE NORTH SHORE
Developing swimmers since 1982
Haleiwa Rd. at Smiley Place
637-4863

REPORT ABANDONED
VEHICLES
Department of Customer Service
768-2530
email: complaints@honolulu.gov

GOT TURKEY?
North Shore News
needs turkey donations
see page 21

HOW TO CONTACT THE NORTH SHORE NEWS

Letters to the Editor, and other items submitted for publication consideration may be sent to us via:

MAIL: 66-437 Kamehameha Hwy., Suite 210, Hale'iwa, HI 96712

E-MAIL: NSNHaleiwa@gmail.com

PHONE: (808) 637-3138

Office Hours: Monday – Friday 10 a.m.-3:30 p.m.

www.northshorenews.com

CLASSIFIED ADS

Next Issue - Nov. 7, 2018
Deadline Date - Oct. 26, 2018

BUSINESS SERVICES CENTER

Fast & Convenient Copy, Fax, Scan, Computer/Internet, Laminate, & More



Across from the Haleiwa Post Office

637-4558 • gonorthshore.org
#gonorthshore

North Shore Food Bank

1st & 3rd Wednesdays
Waiialua Community Association
10 a.m. - 12 noon

MAULO A FOOD PANTRY
at Sunset Beach Christian Church
Tuesdays, 9am - 12 noon

Classified Ad Rates

3 lines (min.) \$18.89
4 lines \$25.13
5 lines \$32.45
1" Box Ad \$41.88
(27 characters in each line)

Include your contact information.
**Ads can be dropped off in mail slot, mailed, or emailed. Pay by check payable to: North Shore News or credit card by phone order.*

We reserve the right to refuse any advertisement with a full refund.
North Shore News • 66-437 Kam. Hwy., Suite 210, Haleiwa, HI 96712
• (808) 637-3138 • NShoreNews@aol.com



Marianne Abrigo, Properties

Specializing in - North Shore Real Estate

Ask for our list of available properties and/or a free market analysis.

Marianne M. Abrigo
"Realtor since 1974"

Office 637-3511
Fax 637-0777
Email mabrigo222@aol.com

HELP WANTED

MATSUMOTO SHAVE ICE
Now Hiring!
Apply in person daily
9am-4pm
808-637-4827

RESIDENTIAL HOUSE STAFF

Full & PT for emergency youth shelter in Haleiwa. Must have 2 yrs exp working w at-risk youth, pass background checks, have understanding of effects of trauma. All shifts available. Email: bcordeiro@coysahi.org Call: 497-5959

NORTH SHORE SURF SHOP ALOHA AMBASSADORS NEEDED!

NOW HIRING! Sales Staff and Manager Positions-Hard Working and Friendly-Japanese, Korean, Chinese Speakers are a PLUS-COME JOIN OUR OHANA! CALL 637-5002 NOW!
Apply in Store
66-150 Kam Hwy, Haleiwa.

Immediate opening for part time salesclerk for women's clothing store In Haleiwa.
Apply at Dawn's Treasures
66-226 Kam Hwy, Haleiwa
10am - 5:30pm
phone 636-2424.

Camp Mokule'ia, an Episcopal Camp & Retreat Center has an opening for a full-time Food Service Director. The Food Service Director is responsible for the overall food service of the camp including:

- Purchasing • Preparation • Nutrition • Service • Sanitation • Personnel management • Customer service • Record keeping

The Food Service Director serves on Leadership Team and attends regular staff meetings in order to coordinate food service operations with all other aspects of camp operations. Qualifications are:

- Experience in institutional or large food service setting.
- Ability to work within a budget and purchase supplies efficiently while maintaining good quality and quantity of meals.
- Experience in supervision.
- Knowledge of current health and safety laws and practices.
- Current certification or licensure for operating a kitchen in the camp's jurisdiction.
- Ability to work with a team.

Please send resume to Darrell Whitaker at executivedirector@campmokuleia.org.

Retail Sales Surf & Sea

Hawaii's Ocean Sports Headquarters is always looking for hard working, energetic people to become a part of our sales team. Good pay, bonus, benefits. Japanese speaking a plus. Ocean sports experience and dive instructor wanted. Please contact surfnsea@surfnsea.com for details.
Apply in person daily 9am-7pm
62-595 Kam. Hwy., Haleiwa

Looking for live in care for multi pets-grooming experience, drivers license and references required.
Moani 638-7073

FOR RENT

TABLES & CHAIRS
Call North Shore News
637-3138
All proceeds go to the North Shore Food Bank

PUPUKEA 3 BEDROOM, 1 BATH
Privately Gated Estate in Pupukea
Large Yard w/ Ample Parking
Outdoor Lanai
\$2,750/month
Call 808-838-1202

PUPUKEA 2 BEDROOM, 1 BATH
Partly Furnished (Furnished Upon Request)
Privately Gated Estate in Pupukea
Carport
\$2,575/month
Call 808-838-1202

MISCELLANEOUS

Parkinson's Group Meeting
Group meets at the Waiialua United Church of Christ on the 1st Saturday of every month. Friends & Family Welcome
Next meeting Nov 3 @10am
Abel 253-9541

CLEAN BODY, FRESH START
Project HieHie is bringing hot showers for those who need a clean start. Stop by the Waiialua Community Asso. on Wednesday, Nov. 7 at 9am. Toiletries, clothes and towels provided.

MEDITATION
Its Not What You Think
An invitation to your natural state of being
Thursdays 6:30p Turtle Bay
Call Dr. Sky 310-753-4079
No Charge

CAR WASH
Saturday, November 3
Waiialua Community Asso.
9am- All proceeds go to the North Shore Food Bank

OFF da ISLAND

Are you leaving Oahu on vacation or business? Do you live on a neighbor island, the mainland or foreign country and subscribe to the North Shore News? Send us a photo of someone in front of a sign, or landmark holding a copy of the NSN. Email your photo along with the person or photos' name, community of residence, telephone number and photo location to: NSNHaleiwa@gmail.com.

Waiialua Farmers Co-Op Market
Waiialua Sugar Mill
Saturdays, 8:30am-1:00pm

NOAA Stranded, Entangled Injured Sea Turtles
(808) 725-5730

FREE ADS

Garage & Yard Sales, Reunions, Lost & Found.
Email ad to:
NSNHaleiwa@gmail.com

OHANA FOOD DROP
Wednesday, November 7
11am- WCA
Bring your bags and boxes
Sponsored by the North Shore Food Bank

WOMEN'S WAIMEA BAY CHAMPIONSHIP



HOLDING PERIOD

OCT 01 - NOV 21

NORTH SHORE, OAHU



REDBULL.COM/QUEENOFTHEBAY

