



**"E Ala Na Moku Kai Liloloa"**

In This Issue:

Keepers of the Clock  
Talking Story with Tom Jacobs  
Page 9

Letters to the Editor  
Pages 10 & 11

Celebrating the Arts  
9th Annual Fundraiser  
Pages 12 & 13



Welzie

NORTH SHORE NEWS January 30, 2019 VOLUME 36, NUMBER 2



*Pupukea Seniors visit Benedictine Monastery with Sister Cici.*

**Holoholo with the Pupukea Seniors**

The Pupukea Seniors Club was started in the spring of 1996 meeting at the Old Pupukea Recreation Center sponsored by

the City and County Department of Parks and Recreation.

Currently, the 40 seniors meet at the Sunset Beach Recreation

Center on the first Tuesday of the month at 9:30 a.m. The Pupukea Seniors would like to welcome new seniors age 55 yrs and up to join in on their monthly meetings and excursions. For more information call 638-7213.

PRSRT MKTG U.S. POSTAGE PAID HONOLULU, HI PERMIT NO. 1479	Hale'iwa, HI 96712 66-437 Kamehameha Hwy., Suite 210
-----------------------------------------------------------------------	---------------------------------------------------------

**Proudly Published on the  
North Shore of Oahu**





## OFF da Island in Rotorua, New Zealand

The Cua family from Haleiwa enjoyed their vacation as they traveled via campervan through New Zealand. Pictured: Ed, Laura, Sujung, Eduardo and Matteo.



### Waialua Community Association ANNUAL MEMBERSHIP MEETING

February 20, 2019  
Sign-In at 6:00 PM  
Meeting at 7:00 PM  
in the WCA Gym

For questions call: 808-637-4606  
Membership applications available at the WCA Office

66-392 Haleiwa Rd.  
Haleiwa

### Saccoccio & Lopez

ATTORNEYS AT LAW  
Serving Haleiwa since 1984

Bankruptcy  
Personal Injury • Criminal Law  
Landlord/Tenant  
Traffic Offenses • DUI

Family Law  
Adoption • Custody • Divorce  
Paternity • Guardianship  
Deeds, and Wills

Notary Public

**637-7611**

VISA/MC Accepted



Paul & Nita

### The Hale'iwa Family Dental Center, Ltd.



- Adults and children
- Most cases completed in 4-12 months
- Clear braces available
- Lower cost
- University tested
- Used for over 20 years

Produced by Todd R. Okazaki and Staff

"Straighten those crooked teeth that have bothered you for years"

Conveniently located behind First Hawaiian Bank in  
Historic Hale'iwa Town  
Call 637-9652 for your reservation



# VALENTINE'S DAY DINNER

BY KE NUI KITCHEN

Thursday February 14

5:00 PM AT THE PROUD PEACOCK

\$90 PER PERSON  
BEFORE TAX & GRATUITY

Reservations:  
[WAIMEAVALLEY.NET](http://WAIMEAVALLEY.NET)

## Menu

- COURSE 1  
**SEAFOOD TRIO**  
Baked Oyster  
Grilled Octopus  
Ahi Tartare
- COURSE 2  
**BURRATA SALAD**
- COURSE 3  
**CONSOMMÉ CAPUCCINO**
- COURSE 4  
**CHOICE OF ENTRÉE**  
Tuscan Style Rib Eye  
Grilled Kona Lobster  
Sunchoke Stuffed Leg of Lamb  
Ali'i Mushroom Steak (Vegetarian)

- COURSE 5  
**CHOICE OF DESSERT**  
24-Carat Double Chocolate Cheesecake  
Fruit, Nut, & Cheese Board



WAIMEA VALLEY  
HI'IPAKA LLC

KE NUI KITCHEN  
FRESH REGIONAL CUISINE | EVENT CATERING | PRIVATE CHEF EXPERIENCES



File your taxes & apply for an Easy Advance\*

**\$500 UP TO \$6,250**  
In 24 hours or less.



**GET \$50 CASH\*\* NOW**  
WITH PAID TAX PREPARATION

\*\*With paid tax preparation provided by Liberty Tax. Valid at participating locations. Cannot be combined with other offers or used toward past services. One coupon per customer and per return. Other exclusions may apply. Void where prohibited by law. Valid 12/26/2018-2/16/2019.



866-871-1040 LibertyTax.com



66-560 Kamehameha Hwy  
By Killer Taco  
Haleiwa, HI 96712  
**(808) 637-2222**

1680 Wilikina Dr  
Across from Schofield Brks  
Wahiawa, HI 96786  
**(808) 622-2677**



\*An Easy Advance is a loan secured by and paid back with your tax refund and is offered by Republic Bank & Trust Company, member FDIC, to eligible taxpayers. Loan amount options are based on your expected Federal refund less authorized fees. If approved for an Easy Advance, a Finance Charge may apply depending on your loan amount. Loan is subject to underwriting and approval. Easy Advance proceeds are typically available within 24 hours of IRS acceptance of tax return or within 24 hours for those filing before the IRS start date however, if direct deposit is selected it may take additional time for your financial institution to post the funds to your account. Visit your Liberty Tax office to learn about the cost, timing and availability of all filing and product options. Valid at participating locations. Valid Jan. 2-Feb. 28, 2019.

**STEP INTO SUMMER**  
Kamehameha Schools  
**2019 SUMMER PROGRAMS**


**EXPLORATIONS HO'OMĀKA'IKAI'**  
One-week summer boarding programs providing foundational Hawaiian values and practices through hands-on activities.  
*Grade and application requirements vary by program.*  
**Application window:**  
Jan. 2 - Feb. 15, 2019

**KILOHANA**  
Innovative, four- and five-week Hawaiian culture-based math and literacy programs.  
*Grade and residency requirements vary by program.*  
**Application window:**  
Jan. 2 - Mar. 15, 2019

**SUMMER SCHOOL**  
Summer courses available at each of our 3 campus locations:  
•KS Hawai'i: Hālau Kupukupu  
•KS Kapālama: Hālau Kūkalaulama  
•KS Maui: Hālau 'o Kapikohānaiāmālama  
*Program details vary by campus.*  
**Application window:**  
Jan. 2 - Feb. 15, 2019

  
KAMEHAMEHA SCHOOLS®  
Kamehameha Schools' policy is to give preference to applicants of Hawaiian ancestry to the extent permitted by law.

To learn more, visit  
**ksbe.edu/summer**

**EVERYONE WELCOME** 

**HALEIWA JODO MISSION**  
66-279A Haleiwa Road  
(808) 637-4382

*Buddhism 101 Series*  
**February – Shakyamuni Basics**

**February 3**  
9:45 a.m. – Introduction to Temple  
10 a.m. – Monthly Service with  
**GUEST SPEAKER:**  
**GEORGE TANABE** and  
light refreshments after

**February 10 @ 8 a.m.** – Kokua Day  
(volunteer church clean up)

**Please call for date & Time** – Sunday  
School (with kids' activities)

**February 24 @ 8 a.m.** – Sutra Chanting  
(meditation practice)





### North Shore Chamber of Commerce News

#### New Member Highlight: The Chocolate Farm

"We have the first organic cacao farm in the country," says Nathan "Nate" Sisler, owner of The Chocolate Farm, based here in Waialua. Nate has been developing his 14-acre farm in Waialua for the last three years and production will be starting in 2019. He has done intense research and trials to propagate exceptional cacao plants and explains: "Here in Hawaii quality cacao genetics are nearly impossible to get in numbers required for an orchard unless you have big capital. The high prices of land, infrastructure and trees made it economical to open our own tree nursery to produce exceptional genetics for a fraction of the cost. These genetics are critical for high quality chocolate production and will assist solidifying Waialua as the best chocolate in the world." Nate will be partnering with master chocolatiers on island to include, Nat Bletter, from Madre Chocolate, to create only the finest Hawaiian chocolate.

As The Chocolate Farm grew so did the need for more fruit trees. In the past year, Nate's tree nursery has tripled in sized to support Waialua farmers with affordable plant stock and now has his trees in Home Depot. Through this effort he hopes to produce not only better cacao genetics but new hybrids of lychee and avocado. What started off as a dream is now a successful small business within our community.

Ten years ago, Nate and his wife, Cortney, moved to the island for a position with the State of Hawaii. They took a leap of faith moving here with only each other, a dream, passion and hardwork. "Nate refers this to sweat equity," says Cortney. Both grew up in rural parts of the mainland and

found the people and country lifestyle of Waialua to be home. Growing up farming, they only dreamed of having a place which had 365 growing seasons; and today they find themselves going above their own expectations, as a part of the future of Waialua agriculture. With their two wonderful daughters, Nate and Cortney hope to one day pass The Chocolate Farm's dream to another generation.



Nate and Cortney

## Paalaa Kai Bakery



# MADE DAILY WITH ALOHA!

### Take a snap of this ad and get 15% OFF on our special Valentine cake or any cake of your choosing!

For February 13-14 order pickups only. Orders must be placed by February 12, 2019. Cannot be combined with other promotions, discounts, or daBest VIP card.



The Chocolate Farm

2nd Annual  
**8K 15K**

[facebook.com/lokoeafunrun](https://facebook.com/lokoeafunrun)

Hale'iwa  
Beach Park



**MĀLAMA  
LOKO EA  
FISHPOND**

March  
17  
2019

*More Info Contact:*

**Doreen@lokoea.org Rowena@lokoea.org**

*To Volunteer: Sayo@lokoea.org*

*We are a 501c3 Non-Profit Organization*



## The Young Women's Prom Event

"The Young Women's Prom event will be on March 2nd at the Polynesian Culture center from 8-10 a.m. We're excited to announce it'll be our first Young Women Prom Conference on the North Shore!!

It is a free event - first come first serve. We give everyone tickets upon entering the event and then they are called in that order at the end of the event to choose a dress, shoes, or jewelry. We have speakers that talk about healthy relationships and awareness about domestic violence. Last year our keynote speaker was Rachel Ostovich. We get sponsors to give away corsages, leis, boutonnieres, photography, make up products such as lashes, lip stick, etc for all your prom cosmetic needs.

I started this event 4 years ago to celebrate and highlight the importance of healthy relationships in our homes, in our community, and among the youth who attend these special events. It's a time to sit with your mom, your dad, your grandma, etc and start the open dialogue about self worth, self esteem, self confidence, and self empowerment."

Drop off locations for Prom dress donations:

Laie Jeans Wearhouse  
55-510 Kamehameha Hwy  
Laie - Closed Sundays  
Store Manager: Lexi

Windward Mall Jeans Warehouse  
46-056 Kamehameha Hwy  
Kaneohe  
Store Manager: Brittney & Levie

Wahiawa Jeans Warehouse  
935 California Avenue  
Wahiawa  
Store Manager: Kim


*5th Annual Young Women*

# Prom Event

**March 2nd**  
**8:00-10:00 am**

**Polynesian Cultural Center**

**Free Event**



Inspirational messages about healthy relationships, self empowerment, and awareness against domestic violence  
Prizes, Free Prom Dresses, Fashion Show, Food  
*Sponsored by the Andria Tupola Foundation*



**Instead of letting food go to waste, we can help feed Hawaii's hungry.**

Aloha Harvest is a non-profit organization that rescues quality donated food from local establishments that otherwise would go to waste and delivers it free of charge to social service agencies who are helping to feed Hawaii's hungry. Donate today, visit [ALOHARHARVEST.ORG](http://ALOHARHARVEST.ORG) or call (808) 537-6945.



# Paalaa Kai Bakery

**Your Hometown Wailua Bakery!**



**Always the perfect time for one of our PKB sweets!**

**Stop by and meet our friendly Ohana**

**Don't forget to place your Valentine cake orders early!**

**Phone: 637-9795**  
**[www.pkbsweets.com](http://www.pkbsweets.com)**



**Representative  
Lauren  
Matsumoto  
Serving You in District 45**

Aloha Friends and Neighbors!

The 2019 Legislative Session began on January 16, 2019 and will run until May 2, 2019. During this time, many important issues will come before the legislature, and to do our jobs effectively, we need to hear from you! Learn how to get involved by submitting testimony on legislation you care about by visiting RepMatsumoto.com, and while you're there, you may sign up for our e-newsletter to learn about legislation I've introduced and to show your support!

Mahalo to many of you for your ideas and suggestions for legislation for the upcoming 2019 Legislative Session by responding to the survey our office sent out. Mahalo for taking time out of your day to share your thoughts with me. If you have any suggestions or concerns that are important to you, please feel free to share them with me so that we can work together for the betterment of our community! If you have not received a survey and live in District 45, please contact my office at (808) 586-9490 for assistance.

With the new year, comes new laws that passed in the Regular Session of 2018, and many laws also went into effect this earlier in the summer as well. For a full list of laws that have passed that you can view online, please visit the Hawaii Legislative Reference Bureau's (LRB) website at lrbhawaii.org or give them a call at 587-0690. You may also reach the LRB via email at lrb@capitol.hawaii.gov should you need any assistance researching the new laws.

Last year, the legislature appropriated funds to the Department of Human Services for the Coordinated Statewide Homeless Initiative. This is one of the major issues we've been working on resolving as a state. Another example of a bill that was signed into law that will take effect on January 1, 2019 is the establishment of a civil penalty for knowingly misrepresenting an animal as a service animal; this act conforms Hawaii law with the definition of "service animal" under the Americans with Disabilities Act of 1990.

The Hawaii State Legislature website (Capitol.Hawaii.Gov) was recently updated for the 2019 Session - if you're looking for information from the previous Session, visit the "Archives" page. To get there, scroll to the bottom left side of the main page, then click on "Archives". You can find information dating back to the 1999 Session.

Now is also a great time to register to

automatically receive information from the Hawaii State Legislature or update your preferences if you already have an account. As I mentioned in the previous issue, you can create personalized measure tracking lists, submit testimony online, and receive hearing notice notifications by email once you have an account at Capitol.Hawaii.Gov, and if you needed any assistance feel free to give my office a call!

Happy Holidays to you all! As always, please feel free to contact me if you have questions or concerns about any happenings in our community. Call me at (808) 586-9490, email RepMatsumoto@capitol.hawaii.gov, or visit RepMatsumoto.com.

**Haleiwa Evangelical Mission International**

**Come and join us**  
**Sunday's at Waialua**  
**Elementary School Cafeteria**

**Sunday School at 9:00 am**  
**Worship Services at 10:00 am**

**For Prayer**  
**Call 637-4567**

**Blessed to be A Blessing**

**"Children's Church"**

**Video \* Media**

**\* Photos & Press \***

**Banzai Productions**  
**Produces all Your Video**  
**Radio & Media Needs**  
**Special Rates on**  
**Commercials - Web Videos**  
**Photos - Social - Press**  
**25 Years of Experience**

**808- 781- 2535**



## Talking Story with Tom Jacobs

### The Keepers of the Clock

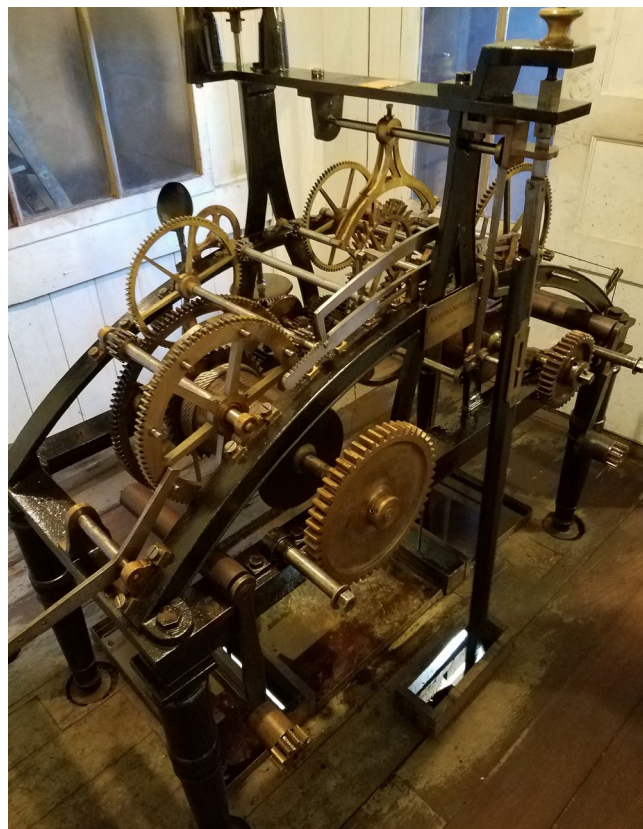
If Central Union Church is Honolulu's "haole church," then Kawaiahao Church is Town's "kanaka church." Designed by Hiram Bingham and built over six years from 1836 to 1842 by Kamehameha II and Kamehameha III, using 14,000 off-shore coral rock slabs from the sea off south Oahu, Kawaiahao Church is historic ... Hawaii's "Westminster Abbey." It is a member of the United Church of Christ family, descended from the original Congregational missionaries that first brought Christianity to the Islands. The church features a beautiful clock-tower housing a large hand-wound clock with four faces facing makai, mauka, Diamond Head, and Ewa. Hand-wound of course. No electricity in 1836.

Now, almost two centuries later, the clock still tells the correct time. This is because two brothers, Douglas and Vincent Mulford, faithfully climb into the clock tower every ten days to hand-wind the old clock. The men stagger any trips off-island so that one of them is always on Oahu. If clock-time needs adjusting, if a bird flies into a clock face and jams the clock, one of the brothers makes the fix. Every ten days one of the brothers cranks a 200-pound concrete block 20 feet up a 3/8 inch cable ... gravity powers the clock as the concrete block slowly makes its way down the cable. This family tradition has been going on for three generations. Doug's and Vincent's mother, Abbie Aulani Mahoe, climbed the clock tower before them, as did their grandfather, Benjamin Hulu Mahoe, before her.

The Mulford brothers are high ali'i. Benjamin Mahoe, their grandfather, was the son of the Reverend Joel Hulu Mahoe, grandfather of the kingdom's last two monarchs, King Kalakaua and Queen Lili'uokalani. Their mother, grandmother, and great-grandmother are buried in the church cemetery. Small wonder that they accepted the responsibility for the Kawaiahao Church clock. The clock itself was manufactured in New England and was donated by Kamehameha III. Doug Mulford remembers his grandfather Benjamin Hulu Mahoe taking him up to the clock tower in the 1950's...through a door behind the organ-pipe room,

up a metal ladder, then up a ten-foot stairwell.

Doug Mulford now lives in Wahiawa, but has North Shore roots. He helped build Haleiwa's McDonald's restaurant and several other buildings. He still works in security at the North Shore Marketplace. I ask Doug what makes him and his brother accept the responsibility for the clock, carrying on his family's tradition. His answer is a simple one. "It's our kuleana." Kuleana: originally a Hawaiian's small piece of property, has come to mean a person's responsibility, his authority, his cause. No better term for the Mulford brothers and their relation to the Kawaiahao Church clock.



Doug Mulford Sr. "Keeper of the Clock"



Kawaiahao Church



Dear Editor:

### Global Treasure

The North Shore of O'ahu is a global treasure.

Our community has been blessed with an incredible number of unique and precious environmental features. These priceless, fragile assets include, among others, Sharks Cove, Pupukea Beach Park, and the Pupukea-Waimea Marine Life Conservation District (one of only three of its kind on our entire island).

There are plenty of laws, policies, and guidelines on the books that are intended to protect the public's interests, including the environment. For example, it is the State of Hawaii's policy to: "preserve, protect, and where possible, to restore the natural resources of the coastal zone of Hawai'i."

Unfortunately, our government is frequently unable or unwilling to enforce these important laws. The Community is fed up with this lack of enforcement, which endangers our health, safety and quality of life.

After four years of disrespectful and reckless behavior by Sharks Cove developer Hanapohaku LLC, the Honolulu City Council approved a proposal for an \$18 million dollar commercial development – a mall - along with a continuing cluster of food trucks, on a piece of property fronting a 100 year-old highway (that is already gridlocked) and literally across the road from the marine sanctuary without doing its due diligence.

That was the last straw.

The Save Sharks Cove Alliance, a grassroots network of community organizations, neighbors, and concerned individuals that have come together to protect Sharks Cove, Pupukea Beach Park, and Pupukea-Waimea Marine Life Conservation District, filed a lawsuit in the State of Hawai'i Circuit Court on Friday, January 11, 2019 to halt the permitting process for Hanapohaku LLC's proposed development at Sharks Cove until they have fully complied with all provisions of applicable State and City and County of Honolulu laws.

The proposed development would not only have a negative impact on traffic, the environment and its immediate neighbors along Pahoe Road, it contravenes the clear intent of the North Shore Sustainable Communities Plan that specifically states that any development at this location should serve primarily the local residents – not establish another tourist trap.

All of this adds to the fundamental concern over the wisdom of allowing any additional commercial activity so near to the Marine Life Conservation District.

The Save Sharks Cove Alliance views this lawsuit as a last resort, because residents feel that they have no other recourse.

It is everyone's responsibility to remain vigilant to ensure that the lure of tourism dollars does not induce poorly planned commercialization, sloppy enforcement of land use laws, lack of regulation and the resulting degradation of the precious natural environment.

The community deserves better, our keiki deserve better, and our oceans and our reefs deserve better.

There are several ways to join & support the effort to preserve, protect and enhance our beloved North Shore:

Donate to the Save Sharks Cove Alliance Legal Fund:

- Online via this Go Fund Me page: <https://www.gofundme.com/save-sharks-cove-alliance>
- Or by check to: Malama Pupukea Waimea P.O. Box 188, Hale'iwa 96712.

Write letters to the editor of all our local media outlets.

Be Active on Social Media

<https://www.facebook.com/SaveSharksCoveAlliance>

<https://www.instagram.com/savesharkscovealliance>

<https://twitter.com/SaveSharksCove>

Save Sharks Cove Alliance

**Poke**  
FOR THE PEOPLE

Poke Bowls, Sushi Bowls, Salads & More

66-935 Kaukonahua Road Suite 105, Waiialua, Hawaii 96791

Next door to Paalaa Kai Bakery inside the Scoop of Paradise Ice Cream Factory

[www.pokeforthepeople.com](http://www.pokeforthepeople.com)



KATHI LEE ALBIAR

OWNER/BROKER – RB 17327

808-358-4139

[KATHI@ALBIARREALTY.COM](mailto:KATHI@ALBIARREALTY.COM)

[WWW.ALBIARREALTY.COM](http://WWW.ALBIARREALTY.COM)

SALES & PROPERTY MANAGEMENT SINCE 1993





Letters to the Editor continued from page 10

Dear Editor:

**Out-of-hand Illegal Business**

I was born in Schofield Barracks. I graduated from Kamehameha School for Girls. I went to the Mainland to further my education. I met my husband, who was originally from Hawaii too, and he promised we would come home to Hawaii when he retired.

We finally returned to Hawaii 28 years later.

Eventually, we bought a home on the north shore. It has been a real culture shock to see the changes – the illegal vacation rentals and student rentals in residential areas.

The problems:

1. Strangers in the neighborhood constantly (Safety for our kupuna becomes an issue).
2. They are robbing local people of long-term affordable rental or a chance to own.
3. Are illegal vacation rental owners paying their fair share of taxes?

Hawaii was overthrown by illegal powers. Today, we're having another illegal overthrow.

This time we have rich people coming from outside of Hawaii who buy properties and turn them into illegal vacation rentals. The owners don't live here. They hire others to do the management for them.

For those reading this, chances are high that the vacation rental you're staying in is ILLEGAL. What you see on the internet websites for vacation rentals

like VRBO and Airbnb are mostly illegal.

Let's get back to the honest days where neighbors respect neighbors. Let's have some respect and integrity for each other and the aina.

A Compassionate Resident,  
Auntie Charlie, Laie Point

Dear Editor:

Libraries transforms lives.

Libraries transforms communities.

Librarians are passionate advocates for life long learning.

Libraries are a smart investment.

Kahuku High School & Public Library



**Westside  
Dive & Tackle**

**Haleiwa**

66-519 Kam Hwy  
(next to the Smoke Shop)



# CELEBRATING THE ARTS 9th Annual Friends of Sunset Beach Fundraiser

## Keeping art and music education alive for the North Shore youth

Friends of Sunset Beach (FOSB), a nonprofit organization dedicated to providing art and music education to the North Shore community's youth, is hosting their ninth annual fundraiser, Celebrating the Arts on Saturday, February 23, 2019 from 5:30 – 10 p.m. at Waimea Valley Pikake Pavilion. Welzie, will be the featured artist at this years event.

Each year, the ticket sales and art auction sales from this event raise money to provide the supplies and salaries for educated art and music instructors to teach at Sunset Beach Elementary. Funds raised also help fuel community art enrichment programs throughout the year, hosting pop-up art tents at events like the Menehune Surf Contest where children can take part in forms of artistic expression for free.

This 2018-2019 school year, FOSB has been able to fund full-time art and music instruction, as well as supplies, for the K-6 students at Sunset Beach Elementary. Art teachers Lilly Barels and Steven Kean and music teacher Tiara Hernandez are now teaching daily—neither art nor music education are in the public school's budget.

"Although art is generally the first course to go in budget cuts, it is often recognized as one of the most important aspects of a child's development and is proven to increase attendance, graduation rates, and test scores," explains FOSB Board Member Suzannah Kennedy. "By participating in the arts, children become more connected to themselves and the world around them and strengthens their bond to their community. Our long-term goal is to support art education at other North Shore schools. Currently, we are adding hours to our art curriculum at Sunset Beach Elementary and will continue to grow the music program. Funds raised will cover this expansion."

Celebrating the Arts is one of the North Shore's most magical evenings, with live music, complimentary food from Kenui Kitchen, and silent


and live auctions with art from some of Hawaii's most accomplished professionals. General admission tickets are \$60 each, however guests can purchase early bird tickets online before February 10 for only \$50. For sponsorship, VIP tables and to purchase tickets, visit: <http://www.friendsofsunsetbeach.org/fundraiser/>



North Shore Keiki creating gyotaku tee shirts at the Friends Of Sunset Beach art tent during the 2018 Menehune Surf Contest. Photo Credit- Kiele Muraco



Students painting a collaborative mural showing themes of environmental stewardship at Sunset Beach Elementary School. Photo Credit- Kiele Muraco



**NORTH SHORE  
PHOTOGRAPHY**

**HALEIWA, HAWAII**

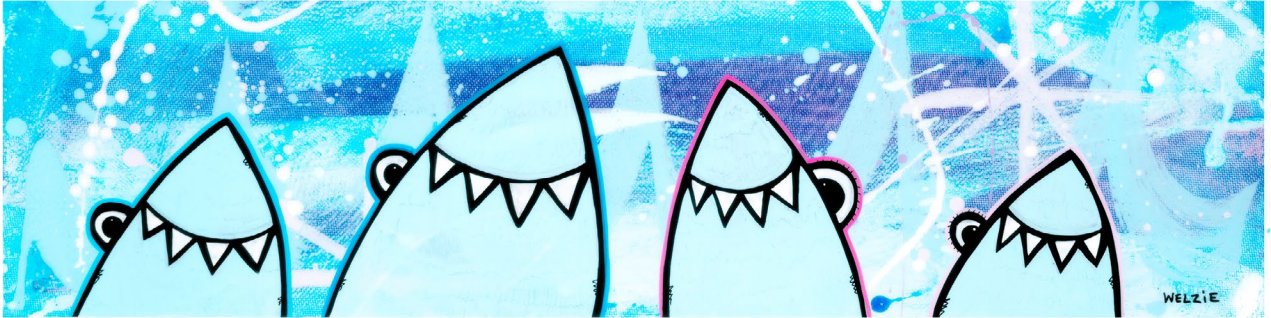
Celebrating 40+ years of Professional Photo Services  
and Historic Images to the Community.  
search: [northshorephotohawaii.com](http://northshorephotohawaii.com)





9th Annual

CELEBRATING  
**THE ARTS** \*



**Saturday, February 23, 2019**  
**Waimea Valley Pikake Pavillion**  
**5:30-10:00PM**



Featured Artist: **WELZIE**

**Special Musical Guests**  
**Live & Silent Auction**

Tickets \$50 Pre-sale / \$60 @ Door Includes Heavy Pupus -Adults Only

**Go To <[friendsofsunsetbeach.org](http://friendsofsunsetbeach.org)> To Purchase**



*Celebrating 25 yrs.*

## Local Community Market

**ORGANIC & Local Produce, Artwork, Crafts & Food**

**SATURDAYS: from 8:00 am - 2:00 pm**

**Across from famous "Banzai Pipeline" Surf Beach and Ehukai Beach Park at Sunset Beach Elementary School**

**[www.northshorecountrymarket.ngo](http://www.northshorecountrymarket.ngo)**



Mason Ho shows no fear at giant Pipeline during Da Hui Backdoor Shootout. Photo: banzaibetty.com





## North Shore Surfing Wireless Betty Depolito - banzaibetty.com

### SUNSET PRO JUNIOR AND "MOORE ALOHA" BY CHAMP CARISSA MOORE

Roi Kanazawa and Gabriela Bryan won the Sunset Pro Junior, the start of the Hawaii/Tahiti season in Hawaii. Bryan of Kilauea, Kauai, defended her title win from last year in the 16 girl event. She has been a stand out for a few years and continues her campaign to make the WSL World Tour. Not an easy task with Hawaii's female contenders having few events here and with only 16 in Juniors it is hard to compete in the events. At least 5 Wahine were left out of the fun so time to increase the entrants for the ladies. We have some great under 14 female surfers being coached by Chris Moore and supported by Carissa Moore, our three time World Champion. The Moore's have started a non profit, the Moore Aloha foundation where she is mentoring surfers! Check it out, sign up at moorealoha.com. The Moore's are mentoring and coaching female surfers from the age of 11 with inspiration from the Hurley Surf Club. Most of the action happens at Kewalo Basin. They want to focus on four main objectives. Being authentic, stepping outside the comfort zone, taking time and having fun! Here are the full results from the WSL Sunset Pro Junior

#### Men's Final

- 1st: Roi Kanazawa (JPN)
- 2nd: Crosby Colapinto (USA)
- 3rd: Levi Young
- 4th: Eli Hanneman

#### Women's Final

- 1st: Gabriela Bryan
- 2nd: Ariana Shewry (NZL)
- 3rd: Leila Riccobuano
- 4th: Summer Ivy

### WHO'S HOT NOW, ONE LOCAL BOY TO WATCH!

Not a great start from local boy Makana Pang in contests so far but watch for the just turned 18 year old to make an impact in the surfing world. This is his first year out of school after graduation so he will be focusing on surfing, a job he always wanted to have. Recently he was entered in "The O'Neill Wave of the Winter and has an entry in the Sambazon Breakthrough Performer Award. He competed in a couple events, the Hui Backdoor Shootout and the Sunset event. No great results so far but I am betting on him! He is a stand out at Pipeline and a great athlete in general having grown up as a paddler also. With support from RVCA and others he will charge. Watch for him to represent the North Shore!

### ROXY PULLS OUT OF THE GOLD COAST WSL EVENT

Roxy, a staunch supporter of Women's surfing, pulled out of the Snapper Rocks WSL event with Boost Mobile taking the reign. Quiksilver will still be on hand for the Men. Things are changing. Roxy is investing in more events that directly interact with consumers, namely it is doing a "Make Waves Move Mountains Tour" around the world. It's a cool marketing plan and the Roxy girls are online to promote. Two time Longboard World Champion Kelia Moniz hosted Wahine in Waikiki and its seems Waikiki is on the agenda for the campaign. No word if another Roxy Waikiki surf event is planned but that was one of the best surf contest ever so I am hoping they bring it back. Roxy will be in Whistler, Tahoe, Byron Bay, Huntington, Biarritz, Bali, Okinawa with the campaign and there is a contest online! Go girls!

### YES BEST CONTEST AGAIN, DA HUI BACKDOOR SHOOTOUT!

Da Hui Backdoor shootout had very few backdoor waves for the final day because of perfect big left grinding tubes were the call for the event. Surf was 8-12 feet and perfect for a couple days and the teams were charging. The contest also included longboard, bodysurfing and SUP divisions. Tyler Newton was the overall winner and the \$40,000 check. His consistent steller performance landed him the highest three wave total. Our own Jamie O'Brien who is world known for his performances at the Pipe took bragging rights and second place. It was a guy from Japan that got the best wave and third place, Keito Matsuoka. He rode some of the best barrels of the event and got the highest score, a 12 point ride.

#### 2019 Da Hui Backdoor Shootout Results

##### Shortboard

1. Tyler Newton, 31.83
2. Jamie O'Brien, 29.50
3. Keito Matsuoka, 28.84
4. Shota Nakamura, 28.66
5. Bruce Irons, 28.00
6. Kala Grace, 28.84
7. Seth Moniz, 27.01

##### Longboard

1. Duane DeSoto, 7.84
2. Keegan Edwards, 7.83
3. Kai Sallas, 6.17
4. Ned Snow, 5.67
5. Makamae DeSoto, 5.50
6. Kaniela Stewart, 4.67

##### Bodysurfing

1. Todd Sells, 14.34
2. Barry Holt, 10.50
3. Kai Santos, 9.50
4. Kealii Punley, 8.67
5. Duane DeSoto, 6.67
6. Haoli Reeves, 6.00

##### SUP

1. Mo Freitas, 13.83
2. Tehotu Wong, 10.67
3. Zane Schweizer, 9.50
4. Bullet Obra, 8.33
5. Pomai Hoopili, 7.00

## Trees Please

It's a hot summer morning and the waves in town are small and crowded. We're surfed out from the days prior, but no problem for us...It's mango season! Common mangoes dripping from neighborhood trees provide all-day entertainment for a pack of mango-hungry kids. The name of the game is getting the perfectly ripened fruit down without a single blemish, to share and devour in the days to come. We climb trees that we have permission to harvest (and few that we don't). The best mangoes never seem to be the low hanging fruit.

These are some of my fondest memories of being a child growing up in Hawai'i. Looking again at the trees from a child's perspective, it becomes clear to me that their benefits far surpass monetary value. Although mangoes can come with price tags, the value of the hours of climbing, the shade the trees provided, and the majestic beauty of the tree itself made us kids feel like the wealthiest people in the world.

Every ancient civilization was founded by a diverse and rich ecosystem. The forests provided shelter, food and transportation, and the humans provided means of seed dispersal and regeneration. From an anthropocentric point of view (the world's resources are only here for human use) the value of trees is one-dimensional and the synergy overlooked. Hopefully for all reading this article, this is not the case. A world without trees does not exist.

The Hawaiian people were masters of their craft. Expansive *kauhale* (villages) utilized tree wood, rope, and leaves for comfortable living. *Ki'i* (carved images) embodied the gods, and *wa'a* (canoe) were carved from single logs specially selected in the uplands. Early Polynesians were master navigators and world travelers. Their mastery would have been impossible without their deep connection to the land and the trees.

In modern-day Hawai'i, trees and shrubs provide a crucial support network in disturbed areas by helping keep the resources up *mauka* rather than letting them run-off the mountain and on to our near shore areas and reefs. Here on Oahu's North Shore, trees can greatly aid in large coastal erosion events, and restore bare unused areas into peaceful areas as well as crucial native habitats for birds and insects alike.

Even with the onslaught of invasive species coming to the Islands, we can find opportunities to use these resources. Trees such as Monkeypod, China Berry, and Albizia can be milled into wood slabs and dimensional lumber. Today in Waimea Valley, fallen trees are utilized in the form of raw wood slabs, and as material for building and repairing *hale*. Nearly every part of the coconut palm is used to make

*Duke Morgan, Horticultural Specialist, Waimea Valley.*  
crafts, utensils and drums for everyday use.

The natural curves and swoops of the canopy, the colors of new growth and flowers, and the bright bursts of seasonal fruit are a sacred connection that is seldom recognized. But studies have shown that urban forests and trees in the inner city areas can relieve stress (Ulrich et.al., 1991) and mental fatigue (Kaplan, 1995), and in some cases reduce crime in the area (Kuo & Sullivan, 2001).

A tree in the backyard of a family home has the power to connect generations. From the Hawaiian people to the plantation workers that came here, plant culture has long been a part of life on these islands. Trees provide food, shelter, arts and crafts, shade, ceremonial tools, travel and voyaging capabilities, soil fertility and stability, privacy, noise reduction, and a home to flora and fauna alike. There are entire books written on a single tree's use, but from food to plastic products and beyond, we can thank our trees for it all. From avocados to life jackets and from juicy fruit gum to the homes we live in, we can thank our floral counterparts for just about everything we see around us today. Trees and plants alike just don't get the recognition they deserve, plant culture is deeply engrained in each and every one of us, and it is up to us to activate our natural abilities. Events such as Arbor Day in Waimea Valley (November, 2 2019) where thousands of trees and shrubs are given away, aim to again get people excited about plant culture.

I often get questions like: "How long will it take to get fruit from my tree?" or "What tree will be best for my home?" These are great questions to ponder, however if you wish to have fruit or to plant a tree in your yard, I feel that this is a commitment regardless of the outcome. Consulting the right people is your first opportunity, someone that can give you advice on soil and environmental issues and can provide you with information on what will suit your needs best. The last thing anyone wants is to invest time, money and labor only to have to cut the tree down. From wood slabs, to trees and helpful advice, Waimea Valley provides the community with what it needs to begin or continue plant culture on the North Shore.

*Ref.*

ULRICH, R.S., SIMONS, R.F., LOSITO, B.D., FIORITO, E., MILES, M.A. AND ZELSON, M. (1991). *Stress recovery during exposure to natural and urban environments. Journal of Environmental Psychology 11, 201-230.*

KAPLAN, S. (1995). *The restorative benefits of nature: Toward an integrative framework. Journal of Environmental Psychology 15, 169-182.*

KUO, F.E. AND SULLIVAN, W.C. (2001). *Environment and crime in the inner city: Does vegetation reduce crime? Environment & Behavior 33, 343-367.*





# RED READER FOR LIFE

56-490 Kam. Hwy. #293-8935 M, W, Th: 9 - 5 pm; Tues: 12 - 8 pm; Fri: 9 - 3 pm  
Hawai'i State Public Library System [www.librarieshawaii.org](http://www.librarieshawaii.org)

## FEBRUARY 2019

Program Sponsor: Friends of the Library Kahuku.



### YEAR OF THE PIG

**Tues., Feb. 5 at 6:00 pm**  
Lion Dance Performance by the Phung Ohana, Special Chinese New Year's dishes by Mrs. Peggy Nihipali, and a presentation of Chinese culture by School Librarian Mrs. Cecile Oshima.



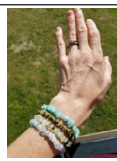
**Family photos of Kahuku graduates from 1940's - 2018.**  
Be part of the generational "Pride of the North Shore" library window project - a forever moment of your family's connection to this school and the North Shore.  
Final display will be kept in the Kahuku Archival Room.  
Details: C. Oshima: 305-7464 or 391-5149

### SCHOOL COMMUNITY COUNCIL

If you have a question or a comment for Kahuku High and Intermediate School, please let the librarian know about it. Kahuku Library is a part of the SCC team!



### HEARTFELT GIFTS with Tara Burlew Tues., Feb. 12 at 5:30 pm



Join Tara Burlew as she shares her knowledge and love of the elemental healing properties of gemstones. She will guide each participant in selecting the gemstones that will benefit them most while they create their own bracelet. Space is limited.

### LIBRARY CLOSED

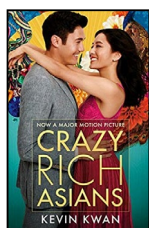
**Thursday, February 7, 2019**  
Library Institute Day  
**Monday, February 18, 2019**  
President's Day



### CRAZY RICH ASIANS MOVIE - PG13

**Tues., Feb. 19 at 5:30 pm**

"Crazy Rich Asians" follows native New Yorker Rachel Chu as she accompanies her longtime boyfriend, Nick Young, to his best friend's wedding in Singapore.



**Thursdays, Feb. 14, 21, 28**  
March 7, 14, 21, 28  
April 4, 11  
From 9:30 - 1:00 pm

### KEIKI MUSIC

**Mon., Feb. 4 & 25**  
10:00 am



### SELMA MOVIE - PG13

**Tues., Feb. 26 at 5:30 pm**

Civil-rights activists march from Selma, Ala., to Montgomery to secure voting rights for black Americans in this docudrama, which focuses on the actions of Martin Luther King Jr.



**Wednesdays**  
2:00 - 4:00 pm



**Fridays**  
10:00 am

To receive the Kahuku Library monthly program flyers, email: [KCL@librarieshawaii.org](mailto:KCL@librarieshawaii.org)



# WAIALUA FEDERAL CREDIT UNION

## HOME EQUITY LOAN

### 3.75% APR\*

CALL US (808) 637-5980 OR VISIT US WWW.WAIALUAFCU.COM



\*Annual Percentage Rate based on an index of 3.50% plus the monthly average of the 26 week Treasury Bill (Auction High) and may be adjusted annually each March. Please call for more details.

# BULLETIN BOARD

**ADAMS & COMPANY**  
REAL ESTATE BROKERS



**Alison R. Mitchell**  
REALTOR-ASSOCIATE®  
(808)256-0152  
RA 62065

NorthShore Marketplace  
66-250 Kamehameha Hwy.  
Haleiwa, HI 96712  
alisonmitchell808@gmail



## LILIKOI

NATURAL HEALTH

MEDICAL CANNABIS CERTIFICATION  
HEALTH AND WELLNESS EVALUATIONS

BOOK YOUR APPOINTMENT ONLINE  
66-216 FARRINGTON HIGHWAY, SUITE 202  
WAIALUA HI 96791 T: 808.321.2352

OUR PASSION IS YOUR WHOLE BEING  
[WWW.LILIKOIHEALTH.COM](http://WWW.LILIKOIHEALTH.COM)

**NORTHSHORE**  
**SMOKESHOP**  
OLD HALEIWA

Quality Cigars Sold Here



808-637-1750

66-521 Kam Hwy, Suite B  
Haleiwa, HI 96712

[northshoresmokeshop.com](http://northshoresmokeshop.com)



### North Shore Taxi

and  
Hawaii Personal Tours

Christian Lane

808-222-1791

**"THE BULLETIN BOARD THAT IS IN EVERYONE'S HOME"**



# BULLETIN BOARD



Featuring the largest selection of certified organic produce on the North Shore.  
 No panic...ours is organic.  
 Open 7 days.  
 Mon.-Sat. 9am-7pm.  
 Sun. 9am-5pm

66-445 Kam. Hwy  
 Haleiwa, Hawaii 96712  
 Next to the Post Office  
 808-637-6729 • 808-637-1922 fax

## LTC

### Laie Trucking Company, LTD

\* Ready Mix Concrete \* Recycled Aggregates  
 \* Pump Service \* Hauling \* Equipment Rental

PH: (808) 293-8710 PH: (808) 293-1296  
 P.O Box 121 FAX: (808) 293-2890  
 Hau'ula, HI 96717 laietrucking@hawaiiantel.net

"A LOCAL COMPANY, BUILDING A LOCAL COMMUNITY"

## N-C PLUMBING & SUPPLY

Cont. Lic. No. C-8913



- RESIDENTIAL & COMMERCIAL SALES & SERVICE
- CONTRACTING & DESIGN • HOME PLUMBING SERVICE
- PLUMBING FIXTURES, HEATERS • FREE ESTIMATES

Nestor P. Calilao (Owner) Bus: 637-8662  
 P.O. Box 769 Res: 638-5157  
 Waialua, HI 96791 Cellular: 372-8718

## BOW WOW BUNGALOWS

Licensed Boarding Kennel

North Shore, Oahu

Reasonable Rates

Ph. 637-2562

*These Dogs Have Fun!*

Linda Yadao

BASI CERTIFIED  
 PRIVATE PILATES EQUIPMENT CLASSES

808.637.1230  
 lindayadao@gmail.com

**Maluhia Place**  
 A PILATES SPACE

**Waialua Bakery**  
 66-200 Kamehameha Hwy  
 Haleiwa, Hawaii 96712  
 808-341-2838  
 Open 10am - 5pm  
 CLOSED SUNDAYS  
 Homemade sandwiches, smoothies, cookies and more.  
 \*www.waialuabakery.com \*www.facebook.com/waialuabakeryjuicebar  
 \*waialuabakery@gmail.com

## Munden Design & Build

Lic.#BC19632

Design • Plans • Permits • Construction  
 Additions & New Residences

808 391-8616

*Providing quality work since 1978*

## PARADISE

"IF YOU BUILD IT, WE WILL PLUMB"



New Construction, Repair, Remodels

Dale Christensen C-29856 (808) 368-1473

New Construction • Drain Cleaning

Got Leak? Call Greekzi!  
 Residential • Commercial • Remodels • Line Locating • Copper • Galvanized  
 372-1820  
**Greekz Plumbing**  
 #C-32939  
 Plumbing Service & Repair

## Greekz Plumbing

License# C-32939  
 Phone 372-1820

School of Champions

Established 1966

## International Karate Federation



**IKF Waialua Dojo**  
 Waialua Elementary School

Beginner classes - ages 5 & up  
 Mon & Wed 5:00 - 6:00 pm

Intermediate classes  
 Mon & Wed 6:00 - 7:30 pm

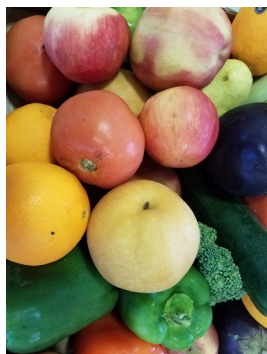
Call 780-5457 or email: wvbinz.bb@gmail.com

# **EMERGENCY IHS SERVICE CENTER & FOOD BANK EVENT**

Individuals and Families affected by the Federal Government  
Shutdown are Invited to Attend

**Waialua Community Association  
Wednesday - January 30, 2019  
9:00am to 1:00pm**

**Wednesday - February 6, 2019  
Ohana Food Drop  
10:00 a.m. - 2:00 p.m.**



*Sponsored By: Waialua Community Association, Institute for Human Services,  
North Shore Food Bank, McKinney-Vento Homeless Assistance*

*For information call: Heidi-IHS (808) 218-1315, Linda-North Shore Food Bank (808) 780-8037*



## North Shore News



## 2019 Schedule

PUBLICATION DATE	EDITION	DEADLINE DATE
January 30	#2	January 18
February 13	#3	February 1
February 27	#4	February 15
March 13	#5	March 1
March 27	#6	March 15
April 10 CANCELLED	#7	March 29
April 24	#8	April 12
May 8	#9	April 26
May 22	#10	May 10
June 5	#11	May 24
June 19	#12	June 7
July 3	#13	June 21
July 17	#14	July 5
July 31	#15	July 19
August 14	#16	August 2
August 28	#17	August 16
September 11	#18	August 30
September 25	#19	September 13
October 9	#20	September 27
October 23	#21	October 11
November 6	#22	October 25
November 20	#23	November 8
December 4	#24	November 22
December 18	#25	December 6

Direct-Mailed to Every Home

MOKULEIA · WAIALUA · HALEIWA · KAHUKU · LAIE

Every Other Wednesday

12,000 copies

"The North Shore's most popular publication" since 1970  
 (808) 637-3138 · NSNHaleiwa@gmail.com · NSN4Linda@gmail.com  
 www.northshorenews.com

## Waialua Public Library UPCOMING EVENTS

67-068 Kealohanui St, Waialua, HI 96791  
637-8286

### Used Book Sale

Saturday, February 16, 8:30am-12:30pm  
*Weather Permitting*  
**NOTE NEW TIME!**

### Writers' Group

Saturday, February 9, 11am  
 Topic: "No Idea What I Was In For"

### Readers' Group

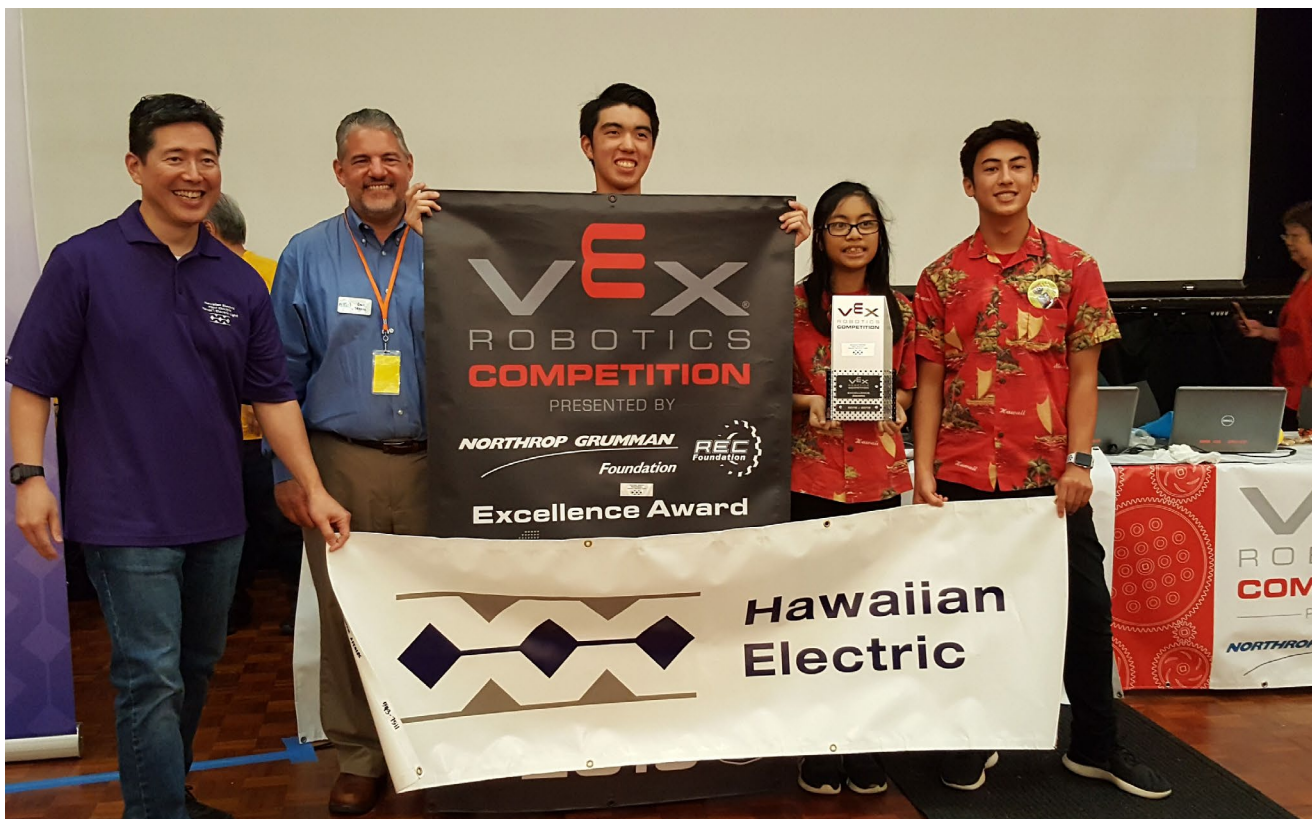
Thursday, February 28, 9:30-11am  
*any poems by Emily Dickinson*

### Recurring Events

**Toddler Time** - Fridays, 10am  
**Storytime** - Saturdays, 10am  
**Computer Instruction** (by appointment)

### Resolve to Be a Member of the Friends of Waialua Library in 2019

Forms are available at the  
 library counter and book sale



Waialua High won the VEX Excellence Award- Waialua High team with (far left) Colton Ching, Hawaiian Electric senior vice president- Planning & Technology. Photo: Art Kimura, Hawaii Space Grant Consortium.



# CLASSIFIEDS

The North Shore News is published every other Wednesday and mailed free of charge to all North Shore homes and businesses. Extra copies may be obtained at our office.

**PRESS RELEASE POLICY:** Submit press releases in person, mail or email to Editor, North Shore News, 66-437 Kam. Hwy., Suite 210, Haleiwa, HI 96712. Please type your releases and keep them shorter than 200 words unless they are of an unusual news interest. Releases should be viable news stories and are published on a **space available basis only**, with priority given to those received in our office first. You may attach photos. We are not responsible for the return of any photos. All materials are submitted at owner's risk. We reserve the right to edit and/or refuse all submissions including advertising.

**EDITORIAL POLICY:** We welcome articles and letters from our readers. Letters to the Editor are published on a space available basis only and preference is given to shortness of length, and quality of content. We prefer to run not more than one letter, per person, per 6 month period. Letters subject to edit.

Views expressed by our contributing writers and advertisers do not necessarily reflect the view of the management and staff of the North Shore News. All rights reserved. Reproduction in whole or part without permission is prohibited. © 2019.

**Editor & Classifieds**  
Linda Seyler

**Typography**

Downtown General Store

**Web Social & Digital Ads**  
straffordmedia.com

**Contributing Writers**

Tom Jacobs  
Betty Depolito

State Representative Lauren Matsumoto  
Senator Gil Riviere  
Capt. Rick Rogers

**Photography**

Banzai Productions



Please recycle this newspaper.

## SERVICES

**SHORE ELECTRICAL SERVICE**  
New Const-Remodels  
638-0049 / Lic#C20777

**Computer Problems?**  
I can fix any MAC or PC.  
Chris 371-3089

**Andres Plumbing**  
All your plumbing needs  
808-256-7337 Lic#C24500

**Carpentry & Painting Services**  
Repairs/Remodeling,  
Termite Rot, Doors, Cabinets,  
Countertops, etc.  
Reasonable Rates 271-6584

**Green Gypsy Thrift Shop**  
Waialua—(808) 366-4000  
Next to Paalaa Kai Bakery

**NorthShoreYardServices.com**  
Affordable Local Service  
Free Quote 498-2218

**Dog/Cat Nail Trimming**  
At your home-only \$20  
Call 808-388-5336

**CS EuroCars Kapolei Mercedes Repair Shop**  
with low labor rates  
ASE Certified Technician  
27 years experience  
2116 Lauwiliwili St. Unit 104F  
Kapolei, HI 96707  
808-682-1957

[paintpaina.com](http://paintpaina.com)

Hawaiian Style Paint Parties!



Call 808 781-2218



Like us on Facebook:  
[Facebook.com/NSNewsHaleiwa](https://www.facebook.com/NSNewsHaleiwa)

**Paumalu Electric Inc.**  
C 18074

Residential & Commercial  
New Installation & Repairs  
Renovations. Remodels  
Electric Meter Replacements

Dave Hancock 638-9054

**Hawaii Tree Co.**  
Trimming & Removal  
Professional-Reliable  
Free Estimates  
462-2749

**North Shore Car Rentals**  
Low cost rental cars.  
Rates are low by providing  
slightly older cars with a  
"local" vibe to them, don't  
be fooled. All vehicles are  
well maintained and safety  
inspected. please visit  
[northshorecarrentals.com](http://northshorecarrentals.com) or  
call (808) 260-4960.

**Radiant Skin Care & Waxing**  
Aynjul Benigno  
Licensed Esthetician  
Call or Text 808-222-8124  
[radiantskinareandwaxing.com](http://radiantskinareandwaxing.com)  
66-935 Kaukonahua Rd.,  
Waialua

**MAULO A  
FOOD PANTRY**  
at Sunset Beach Christian  
Church  
Tuesdays, 9am - 12 noon

**Sabrina Zander  
Photography**  
Makeover and Portrait Studio  
[www.sabrinazander.com](http://www.sabrinazander.com)  
Call for a consultation  
808-589-8854

## BIKRAM YOGA

**\$10 CLASSES**

All 5PM classes  
Mon-Fri thru January!  
**637-5700**

## HARVEY'S TOWING LLC

24 hr Towing Service  
Lockouts, Jumpstarts &  
Recovery. Specializing in  
opening locked car doors.  
Call anytime 478-0333

**Your Clean Home  
Vacation/Residential  
Home Cleaning & Laundry**  
Affordable • Reliable  
• Green Cleaning  
**For Free Estimate  
Call 728-5035**

**WHY KNOTT  
FLORIST  
Waialua Shopping  
Center  
637-9380**

**ALOHA COMPUTER**  
PC/MAC Repair/Virus  
Removal  
**MOBILE COMPUTER  
REPAIR SERVICE  
372-2267**

**North Shore  
Pet Nanny**

Experienced pet sitting,  
Walking, training etc...  
Call Kathryn  
808-489-3645

**North Shore Custom  
Fab &  
Weld Repair**  
Ryan K.Benz- Welder  
808-226-6939

## HOW TO CONTACT THE NORTH SHORE NEWS

Letters to the Editor, and other items submitted for publication consideration may be sent to us via:

MAIL: 66-437 Kamehameha Hwy., Suite 210, Hale'iwa, HI 96712

E-MAIL: [NSNHaleiwa@gmail.com](mailto:NSNHaleiwa@gmail.com)

PHONE: (808) 637-3138

Office Hours: Monday – Friday 10 a.m.-3:30 p.m.

[www.northshorenews.com](http://www.northshorenews.com)



# CLASSIFIED ADS

**Next Issue - Feb. 13, 2019**  
**Deadline Date - Feb. 1, 2019**

**Hawaii Basketball Academy**  
 Free Basketball Program  
 Waialua Community Asso.  
 Tues, Thurs & Sat 3:30pm

**BUSINESS SERVICES CENTER**  
 Fast & Convenient Copy, Fax, Scan,  
 Computer/Internet, Laminate, & More



*Across from the Haleiwa Post Office*

**637-4558 • gonorthshore.org**  
**#gonorthshore**

**Waialua Farmers Co-Op Market**  
 Waialua Sugar Mill  
 Saturdays, 8:30am-1:00pm

**Classified Ad Rates**  
 3 lines (min.) \$18.89  
 4 lines \$25.13  
 5 lines \$32.45  
 1" Box Ad \$41.88  
 (27 characters in each line)  
 Include your contact information.  
*\*Ads can be dropped off in mail slot, mailed, or emailed. Pay by check payable to: North Shore News or credit card by phone order.*  
 We reserve the right to refuse any advertisement with a full refund.  
 North Shore News • 66-437 Kam. Hwy., Suite 210, Haleiwa, HI 96712  
 (808) 637-3138 • NSNHaleiwa@gmail.com



**Marianne Abrigo, Properties**

Specializing in -  
**North Shore Real Estate**

Ask for our list of available properties and/or a free market analysis.

**Marianne M. Abrigo**  
*"Realtor since 1974"*

**Office 637-3511**  
**Fax 637-0777**  
**Email mabrigo222@aol.com**

**HELP WANTED**

**HOUSEKEEPER WANTED**  
 Call (808) 838-1202

**Dude, Where's My Food**  
 is hiring delivery drivers!  
 PT, flexible hours, great tips  
 Apply at DudeFoodHI.com

Part time job, perfect for a mom wanting a few hours of work while kids are at school. M-Tu-Th-Fr approx. 8am - 12noon. Must be clean and reliable, light labor. Please leave a contact number 808-637-8155

Please DO NOT contact the ad posted in the Jan 16 classifieds Help Wanted section for Caregiver for dementia father. This ad is a scam.

**Retail Sales Surf & Sea**  
 Hawaii's Ocean Sports Headquarters is always looking for hard working, energetic people to become a part of our sales team. Good pay, bonus, benefits. Japanese speaking a plus. Ocean sports experience and dive instructor wanted. Please contact surfnsea@surfnsea.com for details.  
 Apply in person daily 9am-7pm  
 62-595 Kam. Hwy., Haleiwa

- RETIRED?
- BORED?
- NEED EXERCISE?
- NEED CASH?
- GARDENER WANTED •

Please contact  
 (415) 307-4812  
 Between 3-5pm

**Hibiscus Lady Nursey**  
 looking for nursery assistant part-time, 3 week day mornings.  
 Call Jill 637-9995

**Certified Groomer**  
 Must do poodles  
 hand-finish grooming skills necessary  
 638-7073

**MATSUMOTO SHAVE ICE**  
 Now Hiring!  
 Apply in person daily  
 9am-4pm  
 808-637-4827

**FOR RENT**

**SOPHISTICATED 1 BEDROOM/1 BATH COTTAGE**  
 Fully furnished unit  
 14' Ceilings/Wood Floors  
 Private/Secluded/Gated Estate  
 \$2200/month  
 Call Jessica at (808)838-1202

**MODERN 1 BEDROOM/1 BATH + LOFT**  
 Fully Furnished  
 1 Bedroom/1 Bath + Loft  
 Granite/Wood Floors/  
 Designer Kitchen  
 Private/Secluded/Gated Estate  
 \$2250/month  
 Call Jessica at (808)838-1202

**TABLES & CHAIRS**  
 Call North Shore News  
 637-3138  
 All proceeds go to the North Shore Food Bank

**MISCELLANEOUS**

**OHANA FOOD DROP**  
 Wednesday, February 6  
 11am-WCA  
 Bring your bags and boxes  
 Sponsored by the North Shore Food Bank

**NOAA Stranded, Entangled Injured Sea Turtles**  
 (808) 725-5730

**Parkinson's Group Meeting**  
 Group meets at the Waialua United Church of Christ on the 1st Saturday of every month. Friends & Family Welcome  
 Next meeting Feb 2 @10am  
 Abel 253-9541

Would you like to get the North Shore News via email in color! Just send us a message at:  
 NSNHaleiwa@gmail.com  
 and you get the NSN online every two weeks!

**FREE ADS**

**Garage & Yard Sales, Reunions, Lost & Found.**  
 Email ad to:  
 NSNHaleiwa@gmail.com

**CAR WASH**  
 Saturday, February 2- 9am  
 at Waialua Community Asso.  
 All proceeds go to the North Shore Food Bank

**AL-ANON**  
 6:30-7:30pm Weds  
 St. Michael's Church  
 Outreach Room  
 67-430 Haona St Waialua

**BBBBRR**

It's been cold lately! Perhaps you have an extra blanket or two, used or new to donate to our homeless neighbors. Drop off blankets at the North Shore News office.  
**A Warm Mahalo**  
 637-3138

**OFF da ISLAND**  
 Are you leaving Oahu on vacation or business? Do you live on a neighbor island, the mainland or foreign country and subscribe to the North Shore News? Send us a photo of someone in front of a sign or landmark holding a copy of the NSN. Email your photo along with the person or persons' name, community of residence, telephone number and photo location to: NSNHaleiwa@gmail.com.

# Friends and neighbors taking care of friends and neighbors



Providing quality health care services to our Koolauloa and North Shore residents and visitors

- 
- Primary Care Clinic
  - Radiology
    - CT
    - Ultrasound
  - Rehabilitation
  - Emergency Care
  - Inpatient Care
    - Acute/Skilled Nursing
    - Long Term Care
  - Diagnostic Laboratory
- 



## KAHUKU MEDICAL CENTER

Friends and neighbors taking care of friends and neighbors

[www.kmc-hi.org](http://www.kmc-hi.org) | 808-293-9221