



"E Ala Na Moku Kai Liloloa"

In This Issue:

The First Hula
By Captain Rick Rogers
 Page 12

Menehune Surfing Championship
Registration Form
 Page 13

Hawaiian Common Gallinule
 Page 16



NORTH SHORE NEWS September 12, 2018 VOLUME 35, NUMBER 18



Photo: WSL

Coco Ho Wins in Spain!

Hawaii's Coco Ho won the Pull & Bear Pantin Classic Galicia Pro in Spain. A big win for sure!

It was a back to back win for the seasoned pro surfer in 4-6 foot waves, size that was no problem for the North Shore girl! The win just about secures another seat on the pro tour in 2019, a tour that will now see equal prize money for the

ladies and more promotions as well. Ho beat Sage Erickson and is now in a cool 2nd position on the WQS, the qualifying part of the tour, the Championship Tour spot in her hands. "I'm super excited the waves were really fun today," Ho said. "I'm banking off the QS right now and this means I'm going to be able to relax a bit more and focus on the

wave pool, Hossegor and Honolua". Ho has had a great run so far after 12 years on tour. The WSL described her as a "scrapper" as she has had close calls for not qualifying and some how dominated the WQS and secured a spot every year.

66-437 Kamehameha Hwy., Suite 210
 Hale'iwa, HI 96712

PRE-SORTED
 STANDARD
 U.S. POSTAGE PAID
 Honolulu, Hawaii
 Permit No. 1479

PROUDLY PUBLISHED ON THE
 North Shore of Oahu
 Home of
Loko Ea Fishpond



OFF da Island in Papeete, Tahiti

Haleiwa Outrigger Canoe Club wahine paddled in Tahiti at the World Sprint Competitions representing Hawaii in the 50's and 60's division. They took silver in the 60's double hull! The ladies brought along their North Shore News to remind them of the good times back on Oahu's beautiful North Shore. Pictured are: Deidre Erikson, Jennifer Smith, Haunani Manning, Annie Smith, Gina LeTourneur, Folly Murdock and Jenny Smith. For more information on the OFF da Island campaign turn to page 23.

The Haléiwa Family Dental Center, Ltd.



Our office will be closed from October 31 to November 19.
Please take care of any problems before that time



- Adults and children
- Most cases completed in 4-12 months
- Clear braces available
- Lower cost
- University tested
- Used for over 20 years

Produced by Todd R. Okazaki and Staff

"Straighten those crooked teeth that have bothered you for years"

Conveniently located behind First Hawaiian Bank in
Historic Haléiwa Town
Call 637-9652 for your reservation

66-392 Haleiwa Rd.
Haleiwa

Saccoccio & Lopez

ATTORNEYS AT LAW
Serving Haleiwa since 1984

Bankruptcy
Personal Injury • Criminal Law
Landlord/Tenant
Traffic Offenses • DUI

Family Law
Adoption • Custody • Divorce
Paternity • Guardianship
Deeds, and Wills

Notary Public

637-7611

VISA/MC Accepted



Paul & Nita



Moon Walk & Dinner Buffet Catered by Ke Nui Kitchen

Fridays September 21 & October 19 · Dinner Buffet
6 - 7:30pm, Start Moon Walk 8 - 8:30pm, Exit by 10pm

FREE Moon Walk Admission with All Dinner Reservations!
Experience the Valley at night · Prices, details, and online
reservations at waimeavalley.net

Harvest Moon Dance: A Fundraiser for Waimea Valley

Friday October 26 · 7pm on the Main Lawn,
Rain or Shine

Featuring Joe Green and the North Shore Band and farm-to-
table cuisine by Ke Nui Kitchen! Support the Valley and buy
tickets/learn more at waimeavalley.net



Kama'aina Keiki & Lā 'Ohana Family Days at the Valley

Kama'aina Keiki Wednesdays and
Lā 'Ohana Sundays (3rd Sunday Every Month)

Kama'aina keiki 12 and under enjoy free admission every
Wednesday! Bring the entire family for a fun-filled day of
Hawaiian activities, games, and much more for all ages

Hale'iwa Farmers' Market Every Thursday

Thursdays 2 - 6pm at the Pikake Pavilion

Join us every Thursday, rain or shine, at this award-winning
weekly market featuring fresh produce, local vendors, arts
and crafts, and live music



WAIMEA VALLEY
HI'IPAKA LLC

On the North Shore Across from Waimea Bay

Open 7 Days a Week, 9am - 5pm

Call: (808) 638-7766



@waimeavalley



@waimeavalleyoahu

WHERE HAWAII COMES ALIVE

WAIMEAVALLEY.NET

Providing comprehensive and quality healthcare
to our Koolauloa and North Shore neighbors



KAHUKU MEDICAL CENTER

-
- Primary Care Clinic
 - Rehabilitation
 - Radiology
 - CT
 - Ultrasound
 - Emergency Care
 - Diagnostic Laboratory
 - Inpatient Care
 - Acute/Skilled Nursing
 - Long Term Care
-

KAHUKU MEDICAL CENTER
www.kmc-hi.org | 808-293-9221

An advertisement for Hawaii Fence Supply. The background is a close-up, slightly blurred view of a silver chain-link fence. The text is overlaid in white, bold, sans-serif font. At the bottom left is a circular logo with a blue and white stylized 'H' and 'F' design. The text reads: 'IN STOCK', 'BLACK • GREEN • GALVANIZED', 'CHAIN LINK FENCE & PIPE', 'HAWAII FENCE SUPPLY', '808-682-3800 | HAWAIIFENCESUPPLY.COM'.

IN STOCK
BLACK • GREEN • GALVANIZED
CHAIN LINK FENCE & PIPE



HAWAII FENCE SUPPLY
808-682-3800 | HAWAIIFENCESUPPLY.COM



Despite the puzzling denials from the White House, we who call Oahu's north and east shores home understand that climate change and sea level rise are very real things. Beach erosion is not a theory to us, it's a fact of life.

Each big wave season brings with it the threat of more loss of private property and more destruction of roadways. While we will never have the tools to defeat Mother Nature, one of my closely held hopes as a City Councilmember was to establish a mitigation plan to protect and preserve these priceless miles of shoreline.

The University of Hawaii's Sea Grant Program, which has been studying this phenomena for years lists Mokuleia, Laniakea, Sunset/Ehukai, and the stretch of shoreline from Punaluu to Kaaawa among Hawaii's erosion hot spots.

In fact, geologists say 60 percent of Oahu's shoreline is chronically eroding. Kualoa Beach Park has been losing about five feet of sand per year, and this has been going on for decades.

Over the years, the City has chopped down numerous palms at Kualoa and the windward coastline as the trees became unstable and posed a safety hazard. We have also learned that hardening the shorelines and building seawalls only accelerates erosion to nearby beaches and lands.

The State Climate Commission predicts that Oahu will see its sea level rise over three feet between 2050 and 2100. Should that happen the potential economic loss would be over \$12 billion and more than 13,000 residents could be displaced.

One of Oahu's most popular and profitable activities each year are the professional surfing contests held on the North Shore. But the dangers of the large waves and surges, combined with the continuing beach erosion is creating real public safety problems. We have resorted to issuing dire warnings to the public during these times for safety's sake, but it has undoubtedly deflated the experience for the thousands who come to Oahu just for the big wave season.

The solution for this will come long after I have left office. But one gratifying action that occurred during my time on the City Council is the Charter Amendment approved by the people that enabled the City Council to create the Office of Climate Change, Sustainability and Resiliency. The work they have started on a resilience strategy to help us adapt to sea level rise cannot be completed soon enough.

NEW LOCATION
67-016 Farrington Hwy, Waialua
next to Waialua Gas Station

SALE

5 Quart Oil Change Boxes	Regular \$3.35 ea
Quantity 5 for \$2.75 ea	Quantity 10 for \$2.40 ea

22 quart size also available
Phone 637-5091 Fax 637-5008

North Shore News Pet Issue

Would you like to see your pet(s) featured in the NSN?



Blu

Email your pet pictures with a caption to
NSNHaleiwa@gmail.com
NSN4Linda@gmail.com

Publication Date:
October 10

Deadline Date:
October 1

Goodbye Hurricane Lane!
Aloha Waialua!

PKB

OPEN DAILY
5:30AM-7:00PM

Phone Orders: (808) 637-9795

Have a great day!

Time to enjoy some sunshine and sweet treats from PKB!
www.pkbsweets.com

Seafood and a Sunset

Join us on **Saturday, September 29, 2018** on the private grounds of Pua'ena Point from **4:30pm to 8pm** for our 1st Annual Dinner Gala celebrating our restoration Accomplishments at **Loko Ea Fishpond!**



www.lokoeafishpond.weebly.com

637-3232

www.EVENTBRITE.com

Contact our Event Chairs:
doreen@lokoea.org rowena@lokoea.org

LOKOEAFISHPOND

ONO PUPUS 'Awa

Delicious Food Stations **SEAFOOD BOIL**

OPEN BAR BEER & WINE Cocktails





**Senator
Gil Riviere**
**Serving Oahu's North and
Windward Shores**

**Why Voters Should Reject the New Property
Tax in November**

Please consider the repercussions of a new state property tax before voting in November. Voters will be asked, "Shall the legislature be authorized to establish, as provided by law, a surcharge on investment real property to be used to support public education?"

This proposed constitutional amendment is a wide-open invitation to expand the state's taxing authority without any mandate to actually increase education funding. It should be rejected.

Let me be clear: I am 100% in favor of increasing funding for education, I graduated from public school, my kids are products of Waiialua High School, my wife is a teacher, and so is my sister. I support better pay for teachers and improved facilities, but this new property tax is not the solution.

- Nothing will prevent the state from taxing all investment property, including affordable rental housing, small business and commercial properties. Taxes, once created, expand and never go away.
- Renters will pay the tax, not the owners. Forty-two percent of households rent their home, and most cannot afford to pay higher rent to cover additional taxes.
- Counties rely on property taxes to fund emergencies services, parks, roads, sewers, etc. A new state property tax would hinder the counties' ability to set tax policy for essential services.
- The combined tax burden and cost of living on residents in Hawaii is already very high. The new property tax would make it worse.
- Existing funding sources could be cut from education and redirected for other purposes. The measure does not mandate any additional funding for education.
- The state budget grew 25% in recent years, yet school funding remained flat. The problem is lack of priority, not lack of funds.

Advocates insist they only want to tax multimillion dollar investment homes and they would never support taxing working families in rental property. Unfortunately, this constitutional amendment provides no such assurance and future legislatures will be able to expand the tax as they see fit.

One has only to look at the conveyance tax and the transient accommodation tax to see how well

intentioned, targeted taxes expand and morph into cash cows for the state general fund. Special funds are diverted all the time and there is no end to creative justifications for moving funds around to meet ever changing priorities.

I am in favor of mandating a minimum percentage of the state budget to fund education and I will submit legislation to place this mandate into law. In this way, we would guarantee funding for education and elevate it to the priority it deserves.

The proposed constitutional amendment does not guarantee any increase to education funding; it is just a new tax. I will be voting No.

My phone number is 586-7330. My email address is SenRiviere@capitol.hawaii.gov. Follow us on Facebook or online at SenatorRiviere.com. Please visit us in Room 217 at the Capitol; or let's talk closer to home, maybe the next time we pass in the street. Mahalo.

**Sunset Beach Community
Association Meeting**
Wednesday, September 19, 7pm
Sunset Beach Recreation Center

ALOHA & WELCOME!

Now that we're done with Hurricane Lane, you might want to stock up on some really windy PKB treats below:

PKB
"Da Best"

Doughnut Holes
Smokies
Butter Rolls
Brownies
Sada's Malassada

ALL at 20% OFF
knock-off prices for 1/2 dozen or more while they last

THIS OFFER IS VALID FROM SEPTEMBER 5 - 18, 2018.
CANNOT BE COMBINED WITH OTHER OFFERS, PROMOTIONS, DABEST VIP CARD.

Learn more about us on YELP or at www.pkbsweets.com
MAHALO and SEE YOU SOON!



**Representative
Lauren
Matsumoto
Serving You in District 45**

Aloha Friends and Neighbors!

We have an amazing opportunity for you to learn about our State Capitol and how to participate in the legislative process. You are invited to join us on Wednesday, October 10th, when I will be holding a Capitol Talk & Tour from 10 a.m. - 12 p.m. At this event, I will be sharing history and interesting facts about our state capitol, discussing how you can get involved in our legislative process, and end the day with light refreshments and a talk story session. The Capitol Talk & Tour event is for all ages and during fall break, so please feel free to bring your keiki and kupuna!

To learn more about the event and to RSVP, please visit RepMatsumoto.com and click on "Capitol Talk & Tour." On my website, you'll find information about parking locations around the capitol district. We will be meeting at 10 a.m. at the State Capitol Rotunda near the Father Damien statue facing Beretania St. We hope to see you there! If you're unable to attend this event, but would still like to talk story with me, please don't hesitate to reach out by calling my office at (808) 586-9490 or email at RepMatsumoto@Capitol.Hawaii.Gov - I am here to serve you and mahalo for this honor and privilege!

Now is also a great time to bring up ideas for legislation or issues that you feel need to be addressed by creating or revising the law. Our legislative session runs from January through May, and we introduce legislation in mid-January.

Regarding disaster preparedness, please remember that our hurricane season runs from June 1st through November 30th. Earlier this summer, my office sent out a Disaster Preparedness Checklist to our constituents. You may also find this checklist as well as the Homeowner's Handbook on Natural Disasters at RepMatsumoto.com > Information > Helpful Links. Mahalo to all of our emergency responders and management personnel who work around the clock during threats of disasters such as Hurricane Lane.

If you or someone you know is interested in learning more about how to respond to emergencies, the City & County of Honolulu's Department of Emergency Management conducts training that consists of 16 classroom hours and a 4-hour field exercise to test your skills. The Community Emergency Response Team (CERT) is a corps of trained volunteers who activate themselves immediately after a disaster to assist their families, neighbors,

and communities until first responders can reach affected areas. Learn more about CERT at honolulu.gov/demvolunteer/cert.html or by calling (808) 723-8960.

As always, please feel free to contact me if you have questions or concerns about any happenings in our community. Call me at (808) 586-9490, email RepMatsumoto@Capitol.Hawaii.Gov, or visit RepMatsumoto.com.

**North Shore Neighborhood Board #27
Tuesday, September 25, 2018
7 pm at Waialua Elementary School**

The next meeting of the North Shore Neighborhood Board will be filling a vacancy in the Waialua Subdistrict 2. Anyone interested in being considered for the seat should be at the board meeting no later than 6:30 pm, present yourself to the Neighborhood Assistant and he will verify that you live in the Waialua subdistrict. Please bring your ID (driver's license or state ID and / or a utility bill in your name showing your current address). Please note that your ID must have your current address, if it does not, then be sure to bring the utility bill with your current address. Sign up for minutes and agenda the meetings at: <https://www.honolulu.gov/esub/email-subscribe-nco> or call Kathleen at 637-8545 for more information or any questions.



nola

studio + boutique

Hand Crafted Jewelry Studio & Boutique
59-935 Kaukonahua Road Waialua, Hawaii
IG/FB: nolashophawaii

Olakino Maika'i

(Good Health)

By Kehau Santiago

Move with a Doc Program by Dr. Jude Sells

Have you been recently diagnosed with a health condition such as Diabetes or Hypertension? If so, the good news is that Dr. Jude Sells, a physician with the Ko'olauloa Health Center is helping to bring change to this trend in Ko'olauloa. His "Move with a Doc program" is bringing community together in a safe non-threatening way. Once a week he makes himself available to walk alongside anyone willing to join the group.

As a local boy returning from school on the mainland, Dr. Sells was shocked to see so many in our community with chronic diseases that were preventable. As a diabetic himself, change in lifestyle was imminent especially because he is married with young children. He needed to incorporate a healthy diet with regular exercise. Since starting the program there have been many in the community who have seen the benefits of consistent participation. The accountability piece is very important. Having another person there to cheer you on increases your chances of success. There have been so many testimonials from community members who have shared firsthand how the program is helping them to lose weight and maintain a healthier lifestyle. Recently, Jim Mendoza from Hawaii News Now visited the "Move with a Doc" program. It was a tribute to the great work that is being done.

If you would like to join him it is open to everyone. "Move with a Doc" is every Monday at 8:00 a.m. Walkers gather in front of the small pop up tent on the Kahuku side of the bike path. Dr. Sells will be providing water, bananas and an exercise partner. If you need more information, please call the Ko'olauloa Health Center at 293-9231.

Ko'olauloa Health Center
293-9231

*We accept everyone regardless of ability to pay.
Improving the quality for life for all. Imua!*



Dear Editor:

RE: Laniakea Traffic

The City, State Department of Transportation and Bishop Estate have held meetings over the years since 2007, to hear the North Shore residents kvetch about the disruption, or rather obstruction to their once idyllic country lifestyle. But relief may be on the horizon.

The Good News: On January 16, 2018 engineers from the state Department of Transportation invited residents of Pohaku Loa Way, a little spur road makai of Kam Highway, to a meeting at Haleiwa Elementary School to display D.O.T.'s plans for a by-pass road. A second meeting followed for the affected homeowners and residents at Chun's Reef.

The by-pass would re-route east bound Kam Highway traffic mauka starting before Lani's forming a loop merging briefly with Plantation Road then which would rejoin Kam Hwy between Chun's and Ashley Road. An access road from the apex of the re-route would run makai to give access to a park at Lani's and Pohaku Loa Way. Kam Highway would be blocked off or demolished between the bypass' endpoints.

Federal funding is or would be available according to Darrell Young at D.O.T., leader of the task force at this stage, under a SMA federal grant, a part of the shoreline preservation plan against shoreline erosion and the inevitable sea level rise. During the surf season, Kam Highway is already sometimes over washed by the waves rendering the highway impassable.

The Not So Good News: Well, relief is a bit farther than over the horizon. Construction of the by-pass is not on D.O.T.'s project calendar dated August 1, 2018.

Interested in learning more? Call Darell Young (808) 587-1835 or email Darell.Young@hawaii.gov.

Perhaps if we raise enough rabble, the by-pass could happen within our lifetimes.

Sincerely,
Sanford Lung

Hurricane Lane...

Mahalo to all the volunteers and the American Red Cross volunteers at the Waiialua High School Shelter.

rajanees
thai haleiwa

66-111 kam hwy suite 1001 haleiwa
808 784 0023
open 12-9pm closed monday



North Shore Chamber of Commerce News

"Social September" Social Media Symposium and Pau Hana

The North Shore Chamber of Commerce is sponsoring a Social Media Symposium with its Pau Hana scheduled from 5-8 p.m., Wed., Sept. 12th, at the Waiialua Community Association building, 66-434 Kamehameha Hwy., Haleiwa, across from the Haleiwa Post Office. Refreshments will be served.

Admission is free to all Chamber members; \$10 for nonmembers. Tickets can be purchased online at: <https://www.eventbrite.com/e/north-shore-chamber-of-commerce-hosts-social-media-september-pau-hana-tickets-49314732693> This event, prompted by interest expressed by Chamber members, is intended to be a prelude to future social media "lunch and learn" workshops. Questions about the event may be directed to the Chamber at 808-637-4558; or info@gonorthshore.org.

The program will consist of 10 to 15-minute presentations from: Alicia Michioka, Digital Media Manager for KHON2, "Social Media Advertising vs Boosting"; Ashlyn Tengan, owner of Smarter Moms Online, "Use Facebook Groups to Generate More Sales"; Jessica Gellert, owner of Gellert Media, "Let Instagram TV Boost Your Business"; and Emma Wo, owner of The AlohaBabe.com, "Build a Content Calendar that Speaks to Your Audience." A 30-minute audience question and answer panel discussion will follow. The remainder of the evening will be devoted to networking and socializing.

Michioka is not only the KHON2 Digital Media Manager but also host of the station's Living808 segment called "Miss Media." She owns New Media Productions, which produces the Miss Hawaii USA pageant and is a former Miss Hawaii USA and Top 10 finalist at Miss USA. She continues to work with local small and medium-sized businesses to develop winning digital strategies. She will be discussing the pros and cons of boosting a post versus advertising. If done wrong, boosting a post is only a waste of time and money. She will explain the difference.

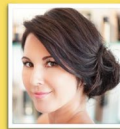
As a full-time mompreneur, Tengan helps millennial moms increase their revenue and reputation in their online businesses. She identifies pathways to improve the online user experience resulting in increased engagement, exposure and sales. Based in Kapolei, she has more than 10 years of social media marketing experience with a proven track record of driving traffic to increase profits. She will be speaking on the topic of generating sales with a Facebook

group. When set up properly, a Facebook group can be a powerful tool that creates an environment where customers are excited to buy from your business.

Gellert's business, Gellert Media, is a social media marketing business based in Haleiwa. She first got involved in social media as a reporter and news producer at KHON2 News. Her experience also includes working as a Social Media and Web Manager for Turtle Bay Resort for five years before moving to Hawaii Pacific Health, where she created engaging and award-winning content for the Hawaii Pacific Health Group. She will be speaking on Instagram TV (IGTV), which will help build engagement and grow your followers. She will give tips on how to use IGTV to do just that.

Wo, a former Miss Hawaii USA, holds a Bachelor's degree in Media Studies from Scripps College and a Master's degree from New York University in Integrated Marketing with a focus on Digital Marketing. Her experience includes managing clients in the fields of travel/tourism, real estate, and education for a local communications firm. She has developed skills in Media Relations, Brand Management and Social Media Strategy. After starting her own blog, she began to develop a social media following and started collaborating with national brands to further engage her followers. Her past collaborations range in industry from tech to fashion. With more than 75,000 followers across her social media channels and a high level of engagement, she is eager to share the social media tips and strategies she has learned along the way.

Guest Speakers & Topics :



Alicia Michioka

Digital Media Manager KHON2
Social Media Advertising VS Boosting



Ashlyn Tengan

Owner of SmarterMomsOnline.Com
Use Facebook Groups to Generate
more Sales



Jessica Gellert

Owner & Social Media Rock Star of
Gellert Media
How to use IGTV for Your Business!



Emma Wo

Owner of The Aloha Babe
Build a Content Calendar that Speaks to
Your Audience



SOCIAL MEDIA SYMPOSIUM & PAU HANA

Wednesday September 12th, 2018

66-434 Kamehameha HWY,
Haleiwa, HI 96712
5-8 pm

More info @

www.gonorthshore.org



Join the North Shore Chamber of Commerce for a fun and interactive "Social September" & Pau Hana Event - Wednesday September 12th from 5 pm to 8 pm at the Waiialua Community Center and North Shore Chamber of Commerce building in Haleiwa. Social Media "Gurus" will be sharing their

favorite marketing tips and suggestions with attendees. Each will present on their favorite topic and then they will answer questions from the audience. Immediately after please enjoy light pupus & wine while mingling with the panel. Cost is free for members, \$10 for non-members.

WILLIAM WOODS PATY JR.

“BILL”



RECEIVED INTO THE FATHER’S LOVING ARMS

AUGUST 12TH 2018

“Ka pōhaku nui pa’a”
has passed.
A True Loss
for our Beloved
North Shore and
the State of Hawaii.

On behalf of our entire Ohana,
5 children – Steve, Randy,
Meg, William III, Susie
13 Grandchildren
16 Great-Grandchildren
3 Great-Great-Grandchildren

Mahalo for the Beautiful ALOHA you extended to Bill.

“Well Done, Good and Faithful Servant.”

IMUA BILL PATY

-Son of Hawaii-

Memorial Service to be held 10:00 a.m.
November 2nd at Central Union Church in Honolulu
All are welcome

The First Hula Hula

By Captain Rick Rogers



The first hula performed for foreigners on the island of Oahu was held at anchor off Waimea Bay on Saturday afternoon, February 27, 1779. The officers and crews of His Majesty's ships Resolution and Discovery had buried the scant remains of Captain Cook at sea off Kealakekua Bay a few days prior and were sailing westward thru the "Sandwich Islands" trading on the run keeping their glasses trained for a good watering place. The surgeon aboard the Discovery, David Samwell kept a journal in which he wrote on the 26th;

"We are running along the Island of Morotai with a large island to leeward of us in sight called O-ahoo.....The Girls, seven in number, who have accompanied us from Keragegooa Bay are well pleased with their situation on board the Ship; in fine Weather they spend most of their time in singing and dancing, they do not seem to mind where we carry them to and would very willingly go with us to England." The next entry reads;

"SATURDAY FEBRy 27th. ...This morning we are bearing down before the Wind on the Island of Oahoo.....This Island has a pleasant Appearance, having much wood upon it; the Land is general high. The girls tell us the Island produces plenty of bread-fruit, Cocoa nuts, Plantains, Yams, Taroo root & sweet Poptates & Sugar Canes and that there are many hogs upon it. In the afternoon (we) saw the appearance of a good anchoring place in an open road with a fine Sandy Beach, on which stood many Towns, with green Platts behind extending to the Hills which rose at no great distance off; as we were sailing along we saw three or four of their burying Places called E-heiaw with a kind of high obelisks erected on them of wood, & on the Pales which enclosed them we could see with our Glasses many human Skulls. We

saw many Indians sitting by their Houses looking at us & shouting now & then. Between two and three o'Clock both Ships came to an Anchor about 3/4 of a mile distant off shore, before the mouth of a small River. Captn Clerke went ashore with an armed party and was met by a great number of the Natives on the Beach, who prostrated themselves before him and received him in a friendly manner, he went a little way up to examine the River, but found the Salt Water flow too high for the ships to water here, on which he sent the large Cutter further along the Coast to a place where the Natives said was good water, and returned on board." The cutter attempted to water in the Anahulu stream, but having got caught in the winter surf, they abandoned the attempt. Samwell continued;

"The Girls we brought with us buy Cloth here for the iron & other things they have got from their Husbands; soon after our coming to an anchor they performed a dance on the Quarter deck which we had not seen before, it might be perhaps to express their Joy on their safe arrival at this place, it was performed by two at a time - they did not jump up as in the common dance but used a kind of regular Step & moved their Legs something like our sailors dancing a Hornpipe, they moved their Arms up and down, repeated a Song together, changed their places often, wriggled their backsides and used many lascivious Gestures. Upon the whole we thought it much more agreeable than their common Dance."

Having failed to find a good watering place, or much trade, and after enjoying the Hula, the girls were set ashore on the beach at Waimea and the ships of the late Captain Cook's expedition sailed into the sunset.



The Friends of Ali'i Beach Present:

THE 42nd ANNUAL NORTHSORE
MENEHUNE SURFING CHAMPIONSHIPS
OCTOBER 13th, 14th, 20th, 21st 2018
HALE'IWA, ALI'I BEACH PARK

- *TIME: 8:00 A.M. Please Come Early
*ENTRY FEE: \$30.00 (ENTER ONE DIVISION ONLY) All contestants receive a contest t-shirt, lunch, goodie bag & other cool prizes
*DEADLINE: Postmarked by OCTOBER 1st NO LATE ENTRIES!!! Drop @ Surf and Sea Hale'iwa by: OCTOBER 5th
*MAIL TO: Menehune Surf Contest P.O. Box 507 Hale'iwa, HI. 96712
*MAKE CHECKS PAYABLE TO: FRIENDS OF ALI'I BEACH, INC.
*INFORMATION: Contest Hotline: (808) 637-2544 (alii) @ 7am Listen to Surf News Network @ 7am
*WEBSITE: www.northshoremenehunesurfcontest.com
*EMAIL: ivykauilive.com
*INSTAGRAM: MENEHUNE SURF CONTEST

(Detach and Mail)---(Please Print CLEARLY)---

Name of Keiki: _____ Phone: _____

Address: _____ City/Zip: _____

BirthDate: _____ Age On OCTOBER 13 2018: _____

SurfBoard Sponsored: YES__ NO__ Email: _____

PARENT PRINT: _____

PARENT SIGNATURE: _____ DATE: _____

*The above signed parent or guardian and the participant release The Friends of Ali'i Beach, its officers, contest staff, event sponsors, The City & County of Honolulu and the State of Hawai'i from any and ALL liability arising from bodily injury or property damage sustained during this event.

CONTEST DIVISIONS: (Check ONE event only) AGE ON 10/13/2018 _____

KOKUA DIVISION: Boy _____ Girl _____ (For boys & girls, ages 3-8 who need help in the water or on the beach. Non-competitive, everyone receives a trophy)

SHORTBOARD DIVISION: (No Boards longer than 6'6")

Boys/Girls 4-6 _____ (NO assistance) Boys 7-8 _____

Girls 7-9 _____ Boys 9-10 _____

Girls 10-12 _____ Boys 11-12 _____

LONGBOARD DIVISION: (boards MUST be at least 3' over surfers head, NO GUNS)

Girls 7-9 _____ Girls 10-12 _____ Boys 7-9 _____ Boys 10-12 _____

MAHALO TO ALL OUR SPONSORS!!!

Talking Story with Tom Jacobs

Maya's Tapas & Wine

Food trucks.

OK, there is some colorful North Shore history attached to them, and the garlic shrimp is ono, but do we need a food truck every 20 feet along Kam Highway? We got Thai and Filipino food trucks, French crepes food trucks, sandwiches, burgers, no-name, you name it. The picturesque, tourist-oriented North Shore needs some little picturesque, colorful, brick-and-mortar eateries that cater to the better angels of our appetites.

Good news, gourmands. Maya's Tapas and Wine restaurant and bar has opened its doors and its menu/wine list to the community in the North Shore Marketplace in Haleiwa. Right next to Serman's Realty, who thoughtfully sacrificed some of his office real estate to the new restaurant. So, as a sacrifice to the community I hustled my okole over there one night last week to sample the menu. I may have mentioned to the staff that I was thinking of writing an article on the place for the paper ... so the pupus (delicious) were on the house and so was the second glass of wine (a Pinot Noir from France, also excellent). The restaurant's general manager, Juliet Wilson, introduced herself, as did Joe Kuka, the place's sommelier.

Sommelier? This small little restaurant has a sommelier? It turns out that Joe (maybe I should address him as Joseph) has taken his required courses, has achieved Sommelier Level 2, and is climbing the sommelier ladder toward increased certification. Can Turtle Bay's fancy Pa'a la'a Kai dining room match that? So I dined on Gambas al Pimenton (sautéed shrimp, also excellent) and sipped my Pinot Noir (still excellent) while I arranged a meeting a few days later with Juliet, Joe (Joseph?) and Maya's owner and chef, Lamont Brown.

Lamont Brown came to Hawaii from El Paso via the Coast Guard. He served on two Coast Guard cutters out of Hilo and Honolulu before attending the Coast Guard's "Cordon Bleu" culinary school. When he left the service he worked in the islands under a series of top-rated chefs before taking the position of executive chef at Luibueno's Mexican Restaurant in Haleiwa. From there he worked as the North Shore rep for a restaurant supply house, before realizing that, "My family would never benefit if I worked for someone else." Maya's Tapas was born. "Tapas," I learned, means "small portions" in Spanish. Allegedly an oldy time Spanish king fell ill, recovering only after a diet of small portions (tapas) of food and, presum-

ably, somewhat larger portions of wine. Tapas also seems to mean "to cover," so the Spaniards covered their wine glasses with a small plate of food (a tapa). Where does the "Maya's" part of the restaurant's name come from? From the name of Lamont's eight-year-old daughter.

Lamont's vision for his restaurant is as a true neighborhood meeting place, opening at 3 p.m. for drinks and pupus as the tourists leave town, with supper at five. Juliet and Joe came to Maya's via Ko 'Olima's Four Seasons restaurant ... tired of the corporate life, ready for something from the ground up, hand's on. My vision for Lamont, Juliet, and Joe is as a trend-setting team, the first of a new chapter in North Shore culinary styling. Geev'em!



Lamont and Juliet



Maya's Staff



North Shore Surfing Wireless Betty Depolito - banzaibetty.com

NORTH SHORE LONGBOARD SURFING CHAMP, KIRRA SEAL

Longboarding is growing and one of our North Shore wahine is stepping up and getting into the game. Kirra Seal grew up in Pupukeya and is charging in the sport she loves, longboarding. Kirra grew up shortboarding but liked the long board vibe of logging and nose riding. Seal represents Hawaii in the MSA Longboard Classic in Malibu and is in the Relik Tour modern competition in San Clemente and Trestles. Check out the Relik Tour at www.surfrelik.com.

ABOUT TIME, EQUALITY IN SURFING

It's really far from "equal" especially on the North Shore! Women have a small portion of surfing events here and the money does not pay the mortgage of the American Dream but things are changing.

The WSL has announced that equal prize money will be awarded to male and female athletes for every WSL controlled event in the 2019 season and beyond, becoming the first US based global sports league to do so. In further support of commitment to women's surfing, the WSL announced three initiatives which will launch in 2019 to further elevate women's surfing.

A global marketing campaign to highlight the women's tour as well as increase event viewership and fan engagement.

A local community engagement program for girls around the world, featuring instructional clinics with WSL athletes at each women's Championship Tour stop to inspire the next generation to embrace surfing.

A monthly content series about the pioneering women of surfing, celebrating them across WSL channels, starting next week with seven-time World Champion Layne Beachley.

SURF RIDER AWARDS IN NOVEMBER, SAVE SOME MONEY!

Surfrider is beyond excited to officially announce the 2018 John Kelly Awards – “Revive the Reef” – on November 10th at Waimea Valley. In the coming months they will be announcing this year’s winners, highlighting the wonderful silent auction donations, the generous sponsors, and of course telling stories of another accomplished year of the Surfrider chapter! Heather Brown did the "Revive the Reef" artwork and created another spectacular piece! The silent auction is always killer and hopefully Jack Johnson will make

an appearance as he has done in the past. If you want to make a Surfrider Monthly meeting they are Wednesday nights from 6:30 to 8:30 at the Revolusun Smart Home on Ala Moana Blvd, suite 220. Surfrider is working on “Ocean Friendly Restaurants”, civic awareness, training for the Blue Water Task Force, and working on dirty water run off and our cesspool problems. Step up and make a difference or hey just spend lots of money where it helps! See you there!



Kirra Seal



Hawaiian common gallinule (`Alae`ula)

By Luka Zavas, Conservation Land Specialist, Waimea Valley on O`ahu's North Shore.



Five `Alae `Ula chicks, *Gallinula galeata sandvicensis*, hatched this breeding season (March - August) in the ponds at Waimea Valley.

`Alae `Ula are small water birds that can be identified by the striking red shield above their yellow beaks. They have black plumage on top, a dark slate blue on their stomach with white stripes on their tail feathers. `Alae `Ula have long legs with feet that are not webbed like a duck, but lobed like a chicken. The chicks are bumbling little black puff balls with red "twig" wings, and sound like tiny eagles as they beg their parents for food. Some would say they are so ugly they are cute. Although the chicks can swim almost as soon as they hatch, they are dependent on their parents for food and protection for the first couple months. When they are about 4-5 months old, basically teenagers, the `Alae `Ula have their true feathers and can forage independently.

The `Alae `Ula was federally listed as an endangered species in 1967 with a count of 16 birds. Once abundant across the Main Hawaiian Islands (except Lana`i and Kaho`olawe), due to pressure from predation by invasive species and habitat loss their numbers have dwindled to an average of 300 individuals on O`ahu and Kaua`i (HDOFAW 1976- 2008, USFWS 2011). The `Alae `Ula are found in wetland habitats; including kalo patches, shrimp farms, drainage flumes, ponds, and estuaries. They are opportunistic feeders that enjoy shrimp, insects, worms, seeds, algae and plants. We've witnessed our birds eating the flower of the water

lily. The conservation team is diligently protecting our resident `Alae `Ula population through control of predators, such as by feral cats, mongoose and bullfrogs, and habitat restoration and management. The conservation goals for the `alae `ula is to cultivate a thriving habitat where their young will have a better chance at reaching adulthood. We hope that once this goal is met and we have a thriving population, they will eventually migrate to other marshes in the North Shore for all to enjoy their company. To track the dispersal of the `Alae `Ula, they are banded with a unique code that identifies their home location as Waimea Valley.

`Alae `Ula are known to be very shy creatures. Most literature cites that 99% of the time, the call of the water bird will be heard but the individual hardly seen. Waimea Valley is one of the few places open to the public where the birds can be easily found in one of four ponds located at the beginning section of the valley. Come visit Waimea Valley to see our three newly fledged chicks in Pond 1 and our two teenagers in Pond 2. Make sure stop at the sign to read about the mo`olelo of how Maui learned the secret to creating fire from an `Alae `Ula.

Ref: https://ecos.fws.gov/docs/five_year_review/doc4563.pdf

Kupu and Kokua Hawai'i Foundation Launch Third Annual Hawai'i Youth Sustainability Challenge Mini-Grant Program

Program Offers Funding and Mentorship for Students to Create Solutions to Environmental Issues

HONOLULU - Students who want to help their schools or communities go green now have a chance to earn funding to back their big ideas. Conservation and education nonprofit Kupu, in partnership with Kokua Hawai'i Foundation, is launching its third annual Hawai'i Youth Sustainability Challenge mini-grant program, which supports student-led environmental initiatives.

Applications are now open and due Oct. 19. Students in grades 6-12 from public, private, and charter schools statewide are encouraged to apply.

"We are so excited to host another Hawai'i Youth Sustainability Challenge mini-grant opportunity," says Kupu CEO John Leong. "Not only is this a great experience for Hawai'i's next generation of eco-preneurs and eco-engineers, but it's also a win for the community at large. We have seen so many students generate innovative and effective projects that address pressing environmental issues. We can't wait to see what our future leaders come up with this year."

Last school year, the program provided a total of \$17,525 in mini-grants ranging from \$150 to \$1,000 to 22 student teams across 20 schools. Projects included custom-designed recycling bins, aquaponics systems, native plant subscription boxes, and an alternative fuel vehicle show, among many other creative environmental initiatives.

"The Hawai'i Youth Sustainability Challenge provided my students with an invaluable experience and an opportunity to tackle a real-world project," said Campbell High School teacher Samantha Long, whose students designed recycling bins and placed them at an area beach park. "The project forced the students through critical thinking, problem solving and collaborating ... What started as a class project turned into a project of passion. They worked together after school and continued working on the project long after the grade was due."

Individual projects will be awarded between \$150 and \$1,000 based on scope and need. Project proposals can be submitted individually, in groups, or involve a collaboration between two or more schools. Each team must include one teacher adviser and will also be paired with an outside mentor to support project development. Grant recipients will be selected in November and projects will commence in January. Projects are required to be implemented and completed by the end of the 2018-2019 school year.

"Last year's Hawai'i Youth Sustainability Challenge projects were impactful not just on the students that participated in them, but also the schools and communities that their projects reached," says Kokua Hawai'i Foundation Executive Director Natalie McKinney. "Kokua Hawai'i Foundation is excited for a new batch of projects spearheaded by youth leaders who care about and want to make positive impacts on our environment."

The Hawai'i Youth Sustainability Challenge is a legacy initiative of the 2016 International Union for Conservation of Nature World Conservation Congress, where it was first announced by first lady Mrs. Dawn Amano-Ige, with the goal of inspiring youth to engage with the environment through action, advocacy, and education. The 2018-2019 Hawai'i Youth Sustainability Challenge is produced by Kupu and Kokua Hawai'i Foundation with support from Kamehameha Schools and other community organizations.

For more information on Hawai'i Youth Sustainability Challenge, visit kupuhawaii.org/hysc/.



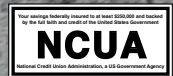
SEEQS Groundbreakers Project

WAIALUA FEDERAL CREDIT UNION

HOME EQUITY LOAN

3.75% APR*

CALL US (808) 637-5980 OR
VISIT US WWW.WAIALUAFCU.COM



*Annual Percentage Rate based on an index of 3.50% plus the monthly average of the 26 week Treasury Bill (Auction High) and may be adjusted annually each March. Please call for more details.



Glenn Kaopua Kaulukukui Jr., 67, of Kapaa passed away at home on July 3, 2018. He was born on Oahu on March 14, 1951. He was a professional surfer and surf instructor. Glenn was one of the key people who started the Pine Trees Long Board Classic Surf contest. He was a well respected member of the surf community thru out the world.

Preceded in death by his mother, May L Wright and brother, Fred Kaulukukui.

Glenn is survived by his wife, Kathy Kaulukukui; children, Kaiea Kaulukukui, Winter Baker, Nicolas Lester, Kalani Rowland, James Fleming; 3 grandchildren; father, Glenn Kaulukukui Sr., siblings, Roddy (Gina) Kaulukukui, John Kaulukukui, Moses (Michelle) Kaulukukui-Palisbo, Douglas Kaulukukui, Kainoa Kaulukukui, Kanani (Carl) Moore, Juliana (Gabriel) Tennberg, Fabian (Anacleto) Kaulukukui-Heloca; numerous nieces, nephews and cousins.

A celebration of his life will be held on Saturday September 22, 2018 3:00pm at Pine Trees beach in Hanalei. Please join Kathy and Glenn's children for a pot luck together after the paddle out.

Kauai Memorial Gardens & Funeral Home assisted the family with arrangements.

BULLETIN BOARD



Featuring the largest selection of certified organic produce on the North Shore.
 No panic...ours is organic.
 Open 7 days.
 Mon.-Sat. 9am-7pm.
 Sun. 9am-5pm

66-445 Kam. Hwy
 Haleiwa, Hawaii 96712
 Next to the Post Office
 808-637-6729 • 808-637-1922 fax

LTC

Laie Trucking Company, LTD

* Ready Mix Concrete * Recycled Aggregates
 * Pump Service * Hauling * Equipment Rental

PH: (808) 293-8710 PH: (808) 293-1296
 P.O Box 121 FAX: (808) 293-2890
 Hau'ula, HI 96717 laietrucking@hawaiiintel.net

"A LOCAL COMPANY, BUILDING A LOCAL COMMUNITY"

N-C PLUMBING & SUPPLY

Cont. Lic. No. C-8913



- RESIDENTIAL & COMMERCIAL SALES & SERVICE
- CONTRACTING & DESIGN • HOME PLUMBING SERVICE
- PLUMBING FIXTURES, HEATERS • FREE ESTIMATES

Nestor P. Calilao (Owner) Bus: 637-8662
 P.O. Box 769 Res: 638-5157
 Waialua, HI 96791 Cellular: 372-8718

BOW WOW BUNGALOWS

Licensed Boarding Kennel
 North Shore, Oahu

Reasonable Rates
 Ph. 637-2562

These Dogs Have Fun!



LILIKOI NATURAL HEALTH

MEDICAL CANNABIS CERTIFICATION
 HEALTH AND WELLNESS EVALUATIONS

BOOK YOUR APPOINTMENT ONLINE
 66-216 FARRINGTON HIGHWAY, SUITE 202
 WAIALUA HI 96791 T: 808.321.2352

OUR PASSION IS YOUR WHOLE BEING
WWW.LILIKOIHEALTH.COM

Linda Yadao

BASI CERTIFIED
 PRIVATE PILATES EQUIPMENT CLASSES

808.637.1230
lindayadao@gmail.com

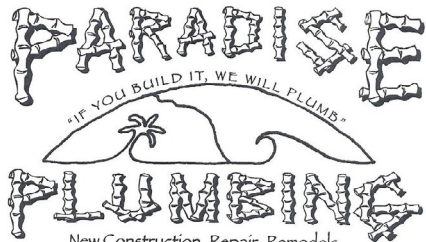
Maluhia Place
 A PILATES SPACE

Munden Design & Build

Lic.#BC19632

Design • Plans • Permits • Construction
 Additions & New Residences
 808 391-8616

Providing quality work since 1978



Dale Christensen C-29856 (808) 368-1473

New Construction • Drain Cleaning
Got Leakz? Call Greekz!
 Line Locating • Copper • Galvanize

 Residential • Commercial • Remodels
 372-1820
Greekz Plumbing
 #C-32939
Plumbing Service & Repair

Greekz Plumbing

License# C-32939
 Phone 372-1820

School of Champions

Established 1966

International Karate Federation



IKF Waialua Dojo
 Waialua Elementary School

Beginner classes - ages 5 & up
 Mon & Wed 5:00 - 6:00 pm

Intermediate classes
 Mon & Wed 6:00 - 7:30 pm

Call 780-5457 or email: wvbinz.bb@gmail.com



KATHI LEE ALBIAR
OWNER/BROKER - RB 17327

808-358-4139
KATHI@ALBIARREALTY.COM
WWW.ALBIARREALTY.COM

SALES & PROPERTY MANAGEMENT SINCE 1993

Quality Tile Crafts

"No job too big or small!"

Specializing in Ceramic Tile,
Travertine, Marble, & Slate

Kevin Wilson

cell (808) 864-4985 office (808) 638-8492
www.QualityTileCrafts.com Free Est.

Kahuku Public and School Library

RED READER FOR LIFE

56-490 Kam. Hwy. #293-8935 M, W, Th: 9 - 5 pm; Tues: 12 - 8 pm; Fri: 9 - 3 pm
Hawaii's State Public Library System www.librarieshawaii.org

SEPTEMBER 2018

CHECK US OUT ONLINE: Register for library programs online at: www.librarieshawaii.org check availability on all our FREE programs!

All Kahuku Library programs are generously sponsored by our Friends of the Library Kahuku. Please support our FOLK.

Movie Night at the Library



DUNKIRK
Rated PG-13

Tuesday, Sept. 4
5:30 pm

WWII thriller about the evacuation of Dunkirk, France, in which 400,000 Allied troops were rescued following a catastrophic defeat.

RAMPAGE Rated PG-13
Tuesday, Sept. 11
5:30 pm

Rampage follows a primatologist named Davis Okoye who must team up with George, an albino gorilla who turns into a raging creature of enormous size as a result of a rogue experiment, to stop two other mutated animals from destroying Chicago.



TOMB RAIDER
Rated PG-13

Tuesday, Sept. 18
5:30 pm

Lara Croft helps a secret group open a mythical tomb while on a quest to find her missing father.

Part 2 - Communication Alzheimer's Association of Hawaii



Tuesday, Sept. 25
5:30 pm

Lyn Moku will give caregivers tips on how to communicate with loved ones diagnosed with Alzheimer's.

Light refreshments will be provided.
Please RSVP by contacting the library or reserving a seat online.
15 attendees minimum needed.

Music MONDAYS Sept. 10 & 17 10:00 am	LEGO Wed, 2 pm Free Play	Storytime FRIDAYS 10:00 am
--	---------------------------------------	---

To receive the Kahuku Library monthly program flyers, email: KCL@librarieshawaii.org

LIBRARY CLOSED
Monday, Sept. 3
Labor Day



Pony Mustang World Series Champions- Head Coach Daniel Kawahakui and Asst. Coach Ryan Takahashi from Waialua along with their sons, Deagan Kawahakui and Ryeder Takahashi, win the World Series 10-0 against Mexico.



**North Shore Food Bank
Food Bag Distribution**
1st & 3rd Wednesdays 10am - 12pm
Waialua Community Association
Donations of non-perishable canned foods can be dropped off at the North Shore News office.
For more information: 637-3138

**Waialua Public Library
UPCOMING EVENTS**
67-068 Kealahanui St, Waialua, HI 96791
637-8286

Used Book Sale
Saturday, September 15, 9am-2pm
Weather Permitting

Writers' Group
Saturday, October 13, 11am
Topic: "October Surprise?"

Readers' Group
Thursday, Sept. 27, 9:30-11am
The Story of Edgar Sawtelle
by David Wroblewski

Recurring Events
Toddler Time - Fridays, 10am
Storytime - Saturdays, 10am
Computer Instruction (by appointment)

Volunteers Needed
We are a small library doing big things for the community. Please contact us to see how you can help.

North Shore News  **2018 Schedule**

PUBLICATION DATE	EDITION	DEADLINE DATE
September 26	#19	September 14
October 10	NS Pets	September 28
October 24	#21	October 12
November 7	#22	October 26
November 21	#23	November 9
December 5	#24	November 23
December 19	#25	December 7

Direct-Mailed to Every Home
MOKULEIA · WAIALUA · HALE'IWA · KAHUKU · LAIE
Every Other Wednesday
12,000 copies

"The North Shore's most popular publication" since 1970
(808) 637-3138 ·
NSNHaleiwa@gmail.com · NSN4Linda@gmail.com
www.northshorenews.com

Haleiwa Evangelical Mission International

Come and join us
Sunday's at Waialua Elementary School Cafeteria
Sunday School at 9:00 am
Worship Services at 10:00 am

For Prayer
Call 637-4567

Blessed to be A Blessing

"Children's Church"

2018 Project Homeless Connect

"Let's put an end to Veteran homelessness!"

SERVICES AVAILABLE
HOUSING ASSESSMENT,
BENEFITS, HEALTH CARE,
LEGAL AID, HAIRCUT,
MAKEOVER, CLOTHING, FOOD,
ENTERTAINMENT, AND MORE

Thursday | September 27 | 7 am - 4 pm
Keehi Lagoon Memorial Park
2685 N Nimitz Hwy | Honolulu, HI

To learn more about the event, or volunteer to support, please contact:
Jackie Nguyen, (808) 347-4412
Kurtis Ching, (808) 433-0357



The North Shore News is published every other Wednesday and mailed free of charge to all North Shore homes and businesses. Extra copies may be obtained at our office.

PRESS RELEASE POLICY: Submit press releases in person, mail or email to Editor, North Shore News, 66-437 Kam Hwy., Suite 210, Haleiwa, HI 96712. Please type your releases and keep them shorter than 200 words unless they are of an unusual news interest. Releases should be viable news stories and are published on a **space available basis only**, with priority given to those received in our office first. You may attach photos. We are not responsible for the return of any photos. All materials are submitted at owner's risk. We reserve the right to edit and/or refuse all submissions including advertising.

EDITORIAL POLICY: We welcome articles and letters from our readers. Letters to the Editor are published on a space available basis only and preference is given to shortness of length, and quality of content. We prefer to run not more than one letter, per person, per 6 month period. Letters subject to edit.

Views expressed by our contributing writers and advertisers do not necessarily reflect the view of the management and staff of the North Shore News. All rights reserved. Reproduction in whole or part without permission is prohibited. © 2018.

Editor & Classifieds
Linda Seyler

Typography
Downtown General Store

Web Social & Digital Ads
straffordmedia.com

Contributing Writers
Tom Jacobs
Betty Depolito
City Councilman Ernie Martin
State Representative Lauren Matsumoto
Senator Gil Riviere

Photography
Banzai Productions



Please recycle this newspaper.

CLASSIFIEDS

SERVICES

SHORE ELECTRICAL SERVICE
New Const-Remodels
638-0049 / Lic#C20777

Computer Problems?
I can fix any MAC or PC.
Chris 371-3089

Andres Plumbing
All your plumbing needs
808-256-7337 Lic#C24500

Carpentry & Painting Services
Repairs/Remodeling,
Termite Rot, Doors, Cabinets,
Countertops, etc.
Reasonable Rates 271-6584

Green Gypsy Thrift Shop
Waialua—(808) 366-4000
Next to Paalaa Kai Bakery

Dog/Cat Nail Trimming
At your home—only \$20.00
Call 808-388-5336

NorthShoreYardServices.com
HomeAdvisor Free quote
Call or Text 498-2218

paintpaina.com
Hawaiian Style Paint Parties!
Paint Parties
Call 808 781-2218

GERMAN CAR SERVICE
Professional-Qualified
Technician
Call Gary
637-6800

GRAPHIC DESIGN
from
carley@waveridingvehicles.com
(808) 295-9073



Like us on Facebook:
[Facebook.com/NSNewsHaleiwa](https://www.facebook.com/NSNewsHaleiwa)

Paumalu Electric Inc.
C 18074

Residential & Commercial
New Installation & Repairs
Renovations. Remodels
Electric Meter Replacements

Dave Hancock 638-9054

Hawaii Tree Co.
Trimming & Removal
Professional-Reliable
Free Estimates
462-2749

North Shore Car Rentals
Low cost rental cars.
Rates are low by providing
slightly older cars with a
"local" vibe to them, don't
be fooled. All vehicles are
well maintained and safety
inspected. please visit
northshorecarrentals.com or
call (808) 260-4960.

Radiant Skin Care & Waxing
Aynjul Benigno
Licensed Esthetician
Call or Text 808-222-8124
radiantskinareandwaxing.com
66-935 Kaukonahua Rd.,
Waialua

North Shore Pet Nanny
Experienced pet sitting,
Walking, training etc...
Call Kathryn
808-489-3645

Aloha Computer
PC/MAC Repair/Virus Removal
Fax/Copy/Internet Access
Located next to Paalaa Kai Bakery
Open M-S, 10-4.
372-2667 or 237-4558

BIKRAM YOGA

BUILD STRENGTH,
FLEXIBILITY & BALANCE
BEGINNERS TO ADVANCED
www.bikramyogahawaii.com
637-5700

HARVEY'S TOWING LLC

24 hr Towing Service
Lockouts, Jumpstarts &
Recovery. Specializing in
opening locked car doors.
Call anytime 478-0333

Your Clean Home

Vacation/Residential
Home Cleaning & Laundry
Affordable • Reliable
• Green Cleaning
For Free Estimate
Call 728-5035

BOBBY'S BODIES

Tuesday evenings at 5:00 p.m.
• Body Toning
• Cardio Pump/Fat Burner
For more info: call Bobby, owner of
BOBBY'S BODIES at 637-4150

LEARN TO SWIM

AT THE
HAWAII SWIM SCHOOL
ON THE NORTH SHORE
Developing swimmers since 1982
Haleiwa Rd. at Smiley Place
637-4863

WAIALUA CAR WASH

66-540 Kam Hwy, Haleiwa
Tues-Fri 10-4, Sat 9-3
For info 714-726-8287

REPORT ABANDONED VEHICLES

Department of Customer Service
768-2530
email: complaints@honolulu.gov

HOW TO CONTACT THE NORTH SHORE NEWS

Letters to the Editor, and other items submitted for publication consideration may be sent to us via:
MAIL: 66-437 Kamehameha Hwy., Suite 210, Hale'iwa, HI 96712
E-MAIL: NSNHaleiwa@gmail.com
PHONE: (808) 637-3138
Office Hours: Monday – Friday 10 a.m.-3:30 p.m.
www.northshorenews.com

CLASSIFIED ADS

Next Issue - Sept. 26, 2018
Deadline Date - Sept. 14, 2018

BUSINESS SERVICES CENTER

Fast & Convenient Copy, Fax, Scan, Computer/Internet, Laminate, & More



Across from the Haleiwa Post Office

637-4558 • gonorthshore.org
#gonorthshore

North Shore Food Bank

1st & 3rd Wednesdays
Waialua Community Association
10 a.m. - 12 noon

MAULO A FOOD PANTRY
at Sunset Beach Christian Church
Tuesdays, 9am - 12 noon

Classified Ad Rates

3 lines (min.) \$18.89
4 lines \$25.13
5 lines \$32.45
1" Box Ad \$41.88
(27 characters in each line)

Include your contact information.
**Ads can be dropped off in mail slot, mailed, or emailed. Pay by check payable to: North Shore News or credit card by phone order.*

We reserve the right to refuse any advertisement with a full refund.

North Shore News • 66-437 Kam. Hwy., Suite 210, Haleiwa, HI 96712
• (808) 637-3138 • NShoreNews@aol.com



Marianne Abrigo, Properties

Specializing in -
North Shore Real Estate

Ask for our list of available properties and/or a free market analysis.

Marianne M. Abrigo
"Realtor since 1974"

Office 637-3511
Fax 637-0777
Email mabrigo222@aol.com

HELP WANTED

Household Help
Beachfront Estate
8 hrs per week
808-637-0808

Looking for live in care for multi pets-grooming experience, drivers license and references required.
Moani 638-7073

Retail Sales Surf & Sea

Hawaii's Ocean Sports Headquarters is always looking for hard working, energetic people to become a part of our sales team. Good pay, bonus, benefits. Japanese speaking a plus. Ocean sports experience and dive instructor wanted. Please contact surfsea@surfsea.com for details.
Apply in person daily 9am-7pm
62-595 Kam. Hwy., Haleiwa

Immediate opening for part time salesclerk for women's clothing store In Haleiwa.
Apply at Dawn's Treasures
66-226 Kam Hwy, Haleiwa
10am - 5:30pm
phone 636-2424.

NORTH SHORE SURF SHOP ALOHA AMBASSADORS NEEDED!

NOW HIRING! Sales Staff and Manager Positions-Hard Working and Friendly-Japanese, Korean, Chinese Speakers are a PLUS-COME JOIN OUR OHANA!
CALL 637-5002 NOW!
Apply in Store
66-150 Kam Hwy, Haleiwa.

OFF da ISLAND

Are you leaving Oahu on vacation or business? Do you live on a neighbor island, the mainland or foreign country and subscribe to the North Shore News? Send us a photo of someone in front of a sign or landmark holding a copy of the NSN. Email your photo along with the person or persons' name, community of residence, telephone number and photo location to: NSNHaleiwa@gmail.com.

MATSUMOTO SHAVE ICE

Now Hiring!
Apply in person daily
9am-4pm
808-637-4827

NOAA Stranded, Entangled Injured Sea Turtles
(808) 725-5730

FOR RENT

TABLES & CHAIRS
Call North Shore News
637-3138
All proceeds go to the North Shore Food Bank

PUPUKEA 3 BEDROOM, 1 BATH
Privately Gated Estate in Pupukea
Large Yard w/ Ample Parking
Outdoor Lanai
\$2,750/month
Call 808-838-1202

MISCELLANEOUS

North Shore Country Market
Saturdays, 8am-2pm
Sunset Beach Elementary

Waialua Farmers Co-Op Market
Waialua Sugar Mill
Saturdays, 8:30am-1:00pm

Parkinson's Group Meeting
Group meets at the Waialua United Church of Christ on the 1st Saturday of every month.
Friends & Family Welcome
Next meeting Oct 6 @10am Abel
253-9541

OPEN MEETING OF N.A. CLEAN IN DA COUNTRY
THURSDAYS 6:30-7:30PM
Mondays 6:30pm-7:30pm
Saturdays 9:30am-10:30am
Sunset Beach Recreation Center
59-540 Kam Hwy

CLEAN BODY, FRESH START
Project HieHie is bringing hot showers for those who need a clean start. Stop by the Waialua Community Asso. on Wednesday, Sept 19 at 9am. Toiletries, clothes and towels provided.

North Shore News Popular Pet Issue
Publication Date: October 10
Deadline Date: October 1
Email your pet(s) pics to: NSNHaleiwa@gmail.com

North Shore Chamber of Commerce is looking for volunteers to help with copying, faxing and greeting/guidance with visitors. Monday and Wednesday afternoons 1pm-5pm are available. We need energetic and knowledgeable people who enjoy interacting with others.

The 42nd Annual North Shore Menchune Surfing Championship
Registration Form
See page 13

Loko Ea Fishpond Community Workday
Help revive a 400 year old Hawaiian fishpond every 3rd Saturday.
For info call 637-3232

Harvest Moon Dance
Fundraiser for Waimea Valley
Friday, October 26, 7pm
Featuring Joe Green and the North Shore Band and farm to table cuisine from Ke Nui Kitchen
Tickets at WaimeaValley.net

FREE ADS

Garage & Yard Sales, Reunions, Lost & Found.
Email ad to: NShoreNews@aol.com

Quality Care Close to Home



Wahiawa General Hospital
Emergency Room

Over 20,000 patients a year are cared for in Wahiawa General Hospital's Emergency Room!

Our new, state-of-the-art facility means that our team of physicians, nurses and allied health professionals have the most advanced medical technology to provide the highest level of care.



Wahiawa General Hospital

Quality Care Close to Home

www.wahiawageneral.org