



“E Ala Na Moku Kai Liloloa”

In This Issue

**Haleiwa Arts Festival
Art of Aloha**
Page 6

**North Shore Chamber of Commerce
Welcomes New Board**
Page 10

Turtle Bay Foundation
Page 11



NORTH SHORE NEWS May 9, 2018 VOLUME 35, NUMBER 9



Angelina Yossa top rated Hawaii surfer with Luana Silva Hawaii State Champion. Photo: banzaibetty.com

Local Surfers Luana Silva State Champ & Angelina Yossa Top Rated in the State

Local North Shore surfer and Billabong team rider, Luana Silva, is our new HSA State Champion in her age division, 12–13 year olds. Silva won the title at Ala Moana Bowls in the prestigious invitational competition that the Hawaii Surfing Association puts on every year. Surfers have to qualify

for the event. The best Surfers from all the Hawaiian Islands compete for a chance to qualify for the National competition in Southern California. Another local surfer Angelina Yossa had a great season. The Waiialua surfer placed first in three divisions in the Hawaii Surfing Association year-end ratings

and placed second in two divisions at the HSA State Championship at Bowls. Yossa was first in her age group, 13-14, first in the Junior and first in the 15-16 division for the year. Yossa is also on the Waiialua High School Team as team captain. Congratulations, way to represent Hawaii!

66-437 Kamehameha Hwy., Suite 210
Haleiwa, HI 96712

PRE-SORTED
STANDARD
U.S. POSTAGE PAID
Honolulu, Hawaii
Permit No. 1479

PROUDLY PUBLISHED ON THE
North Shore of Oahu
Home of
**North Shore
Swim Series**
Registration Form Back Cover



OFF da Island in New Zealand- Haleiwa residents Karissa, Bret, Bella and Brodi Bartee at Lake Matheson in Franz Josef with Fox Glacier in the background.

**North Shore Neighborhood Board #27
Tuesday, May 22, 2018
7 p.m. at Waialua Elementary School**

The next meeting of the North Shore Neighborhood Board will hear a presentation from the City and County OFFICE OF CLIMATE CHANGE, SUSTAINABILITY AND RESILIENCY, an update from Alea Bridge along with updates from the City and County, HPD, HFD, and other elected officials. Sign up for minutes and agenda the meetings at: <https://www.honolulu.gov/esub/email-subscribe-nco> or call Kathleen at 637-8545 for more information or any questions.

66-392 Haleiwa Rd.
Haleiwa

Saccoccio & Lopez

ATTORNEYS AT LAW
Serving Haleiwa since 1984

Bankruptcy
Personal Injury • Criminal Law
Landlord/Tenant
Traffic Offenses • DUI

Family Law

Adoption • Custody • Divorce
Paternity • Guardianship
Deeds, and Wills

Notary Public

637-7611

VISA/MC Accepted



Paul & Nita

The Hale'iwa Family Dental Center, Ltd.



now offering **FASTBRACES**



- Adults and children
- Most cases completed in 4-12 months
- Clear braces available
- Lower cost
- University tested
- Used for over 20 years

Produced by Todd R. Okazaki and Staff

"Straighten those crooked teeth that have bothered you for years"

Conveniently located behind First Hawaiian Bank in
Historic Hale'iwa Town
Call 637-9652 for your reservation



Mother's Day Brunch Catered by Ke Nui Kitchen

Sunday May 13 at the Pikake Pavilion

FREE Same-Day Admission with All Brunch Reservations!
Book online at waimeavalley.net

SAVE THE DATE: Fathers' Day BBQ Brunch, Sunday June 17



Moon Walk & Dinner Buffet Catered by Ke Nui Kitchen

Thursday May 31 - Dinner Buffet 6 – 7:30pm ·
Enter Moon Walk 8 – 8:30pm, Exit by 10pm

FREE Moon Walk Admission with All Dinner Reservations!
Experience the Valley at night · Prices, details, and online
reservations at waimeavalley.net



Weekly Hale'iwa Farmers' Market & Screen on the Green

Thursdays 2 - 6pm · First Screen on the Green:
Thursday May 31 (Every Thursday through July 19)

Award-winning weekly market with fresh produce and local
vendors, followed by a **FREE**, family friendly outdoor movie
screening



Tickets On Sale Now! 6th Annual Summer Concert Series

Saturdays June 30, July 28, & August 25,
3pm on the Main Lawn, Rain or Shine

Presale tickets on sale now exclusively at waimeavalley.net · Join us for our annual showcase of Hawai'i's best
local music and hula!



WAIMEA VALLEY
HI'IPAKA LLC

On the North Shore Across from Waimea Bay

Open 7 Days a Week, 9am - 5pm

Call: (808) 638-7766



@waimeavalley



@waimeavalleyoahu

WHERE HAWAI'I COMES ALIVE

WAIMEAVALLEY.NET

KAHUKU MEDICAL CENTER

Providing the following quality health care services to our Koolauloa and North Shore residents and visitors:

• Primary Care Clinic

• Radiology

- CT
- Ultrasound

• Rehabilitation

- Physical Therapy
- Occupational Therapy
- Speech Therapy



• Emergency Care

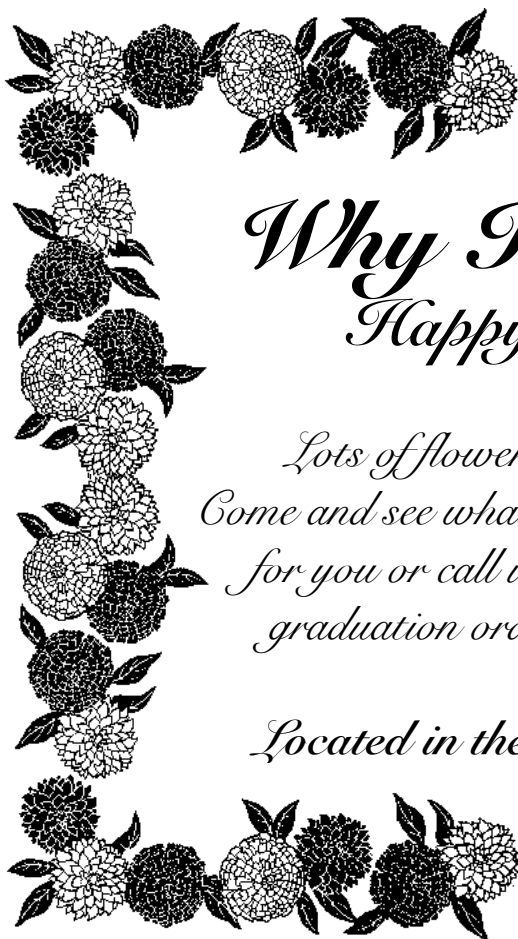
• Inpatient Care

- Acute/Skilled Nursing
- Long Term Care

• Diagnostic Laboratory

www.kmc-hi.org

808-293-9221



Why Knott Florist Happy Mother's Day!

*Lots of flowers, plants, orchids, and more.
Come and see what your community flower shop has
for you or call us at 637-9380. We are taking
graduation orders, lots of lei to choose from.*

Located in the Waialua Shopping Center



Council Chair Emeritus
Ernie Martin
Serving You in District 2

Legislature Rolls the Dice with Ohana Zones

Now that the 2018 State Legislature has staked out its position on homelessness by appropriating \$30 million to establish as many as six "Ohana Zones" statewide, it's up to Governor David Ige to decide how to move forward - or not.

The Legislature sidestepped the hand-wringing problem of where these zones would be placed. They did the easy part, and left it to the Governor and the Counties to face the communities that will be asked to accept an Ohana Zone.

Senate Bill 2401 also says that these zones on public lands will provide "secure dwelling spaces" that will be "paired with intensive services, including health care and transportation." The type of dwelling is not specified.

For the record, however, both Governor Ige and Honolulu Mayor Kirk Caldwell are no fans of safe zones, or tent cities, as they are better known. They argue for expending our limited resources on finding or creating permanent housing, such as the Housing First model, that also includes wrap-around services.

This is where it gets really interesting. The City is now authorized to enforce sidewalk and stored property laws in State-owned Kakaako. The homeless there will need to either accept shelter or move on to other areas. This will cause new homeless encampments to pop up, or increase the populations in other areas where the homeless are already established.

Honolulu is far short of the housing it needs to fully implement Housing First type solutions. And building the needed housing is a time-consuming and long-term proposition.

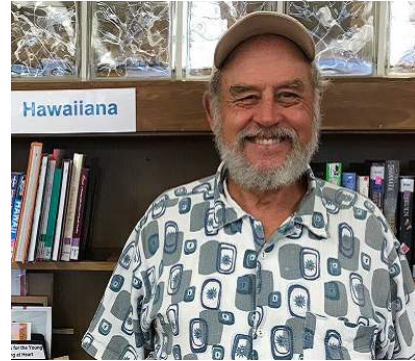
The need is now and we may have no choice but to find a way to fit Ohana Zones into the equation while we pursue the permanent solutions. SB2401 will prove problematic, but the Legislature has decided it's worth the gamble.

The City may be a little ahead of the game. Last November, the City Council adopted Resolution 17-277, CD1, FD1, authorizing the City Administration to identify lands that can be used as temporary legal encampments for the homeless.

How these supposed safe-refuge Ohana Zones are to be operated is not addressed in SB2401, but you can bet that the Legislature won't be pleased with something nonchalant, with few rules or procedures, to account for that \$30 million.

But that is precisely the kind of place that would attract the long-time homeless who are inured to life on the streets.

HAWAII STATE PUBLIC LIBRARY SYSTEM PRESENTS
Saga of the North Shore, Part 3: The Voyagers



Waialua Public Library
67-068 Kealohanui St.
(808) 637-8286



www.librarieshawaii.org

Saturday
May 12th
11:00am

Who were the voyagers? Where did they come from, and when? Join us as we explore the history of the North Shore in this ongoing history series with local historian Rick Rogers.

HOME OF THE SNOW PUFFY & SADA'S MALASSADA

HAPPY MOTHERS DAY from daPKB ohana



HALEIWA ARTS FESTIVAL 2018 FUNDRAISER

Art of Aloha



The Historic Lodge

at Dillingham Ranch

NORTH SHORE / MOKULEIA

Saturday • June 2 • 6-10PM

LIVE ENTERTAINMENT BY:

**North Shore
Event of
the Year!**

Award-Winning

GINAI

AND HER BIG BAND

JAZZ / R&B / ROCK / FUNK AND EVERYTHING IN BETWEEN

Tickets Include:

**Champagne Reception • Exceptional Food • Wine & Beer
Great Entertainment • Silent Auction • Artistic Dancers**

\$125 Individual

\$150 VIP (Front Table with Wine Service)

\$1500 VIP Table of 10 (Front/Center with Wine Service)

Purchase Your Tickets at eventbrite.com

VERY LIMITED SEATING - BUY YOUR TICKETS EARLY!

haleiwaartsfestival.org

COMMUNITY4ART

21st Annual Haleiwa Arts Festival

July 14/15 2018 • Haleiwa Beach Park

North Shore Oahu



**Senator
Gil Riviere**
Serving Oahu's North and
Windward Shores

2018 Legislature Wraps Up

What felt like a rather quiet and uneventful legislative session turned out to be rather productive. The 2018 Legislative Session ended on May 3rd with passage of some big initiatives and new policy statements. Homelessness and affordable housing projects received large infusions of money, \$125 million was allocated for flooding disaster relief on Kauai and East Honolulu, a new state property tax is up for a public vote in November, and Physician Assisted Suicide passed earlier in the session.

In a major move to support affordable housing, the Rental Housing Trust Fund is allotted an additional \$200 million. This cash infusion is expected to result in the creation of as many as 1,600 affordable rental housing units for families at or below 80 percent AMI. The same measure, HB2748, appropriates \$10 million for interim financing of affordable housing, and grants substantial tax exemptions for creation of new affordable housing for households up to 140 percent AMI.

A big push was made to address the homeless crisis through two measures that provide \$34.7 million for safe zone projects and wrap around services. The state budget includes \$15 million to fund homeless programs and services such as Housing First, Rapid Re-Housing, and Family Assessment Centers. Other measures allot various sums for related projects.

If you have not yet heard of Oxybenzone and Octinoxate, you should know these sunscreen chemicals have been shown to damage coral. Obviously, vibrant coral reefs are essential to the health of our coastal waters and protection of our shorelines. I am pleased to have participated in the legislative process to ban the sale in Hawaii of sunscreen containing these harmful chemicals, beginning in 2021. In the meantime, please read labels and avoid these two ingredients.

Another hot topic for many people in our district has been concern over potential health risks of the pesticide chlorpyrifos, a restricted use pesticide (RUP) that the EPA considered banning nationally. RUPs require additional safeguards for use and can only be applied by certified applicators. While chlorpyrifos use has been in decline, some agricultural operations will need time to transition, so exemptions from the Department of Agriculture may be granted for a few years. SB3095 also requires public reporting of RUP use above certain levels and mandates a 100-foot buffer zone around schools if

pesticides are applied during school hours.

The trend of voting early at select sites and voting by mail is steadily increasing. In fact, more votes were cast by mail or early walk-in than at the polling places in 2016. In light of this, a pilot project to vote by mail on Kauai will begin in 2020. In person voting will still be allowed at limited polling places, but the widespread, local voting places will be phased out. Depending on how it goes on Kauai, this voting system could be expanded throughout the state.

In an earlier article, I discussed the Physician Assisted Suicide/Death with Dignity Bill. I will discuss the likely consequences of a new state-wide property tax in a later article. There are other bills worthy of mention, but space permits only a brief list of highlights.

My phone number is 586-7330. My email address is SenRiviere@capitol.hawaii.gov. Follow us on FaceBook or online at SenatorRiviere.com. Please visit us in Room 217 at the Capitol; or let's talk closer to home, maybe the next time we pass in the street. Mahalo.

Next Issue May 23, 2018
Graduation Issue
Deadline May 11, 2018

**OUR MOTHER'S DAY SPECIAL
PLEASE VISIT US FOR YOUR
FAVORITE TREATS!**

MOTHERS with kid,
come visit us - just buy
a dozen butter rolls
and/or a dozen
Sada's Malassadas
and get

GET 15% OFF!
(All others can still receive 10% OFF)

*This offer is valid from May 9 - 22, 2018. Cannot be combined
with other promotions, discounts, or daBest VIP club card.*

Proudly serving Waiialua for over 40 years!

**Located right in Waiialua on Kaukonahua
road next to the Paalaa Kai Mini Mart!**

**Visit us online at www.pkbsweets.com
to learn more!**



**Representative
Lauren
Matsumoto
Serving You in District 45**

Aloha Friends and Neighbors!

As I am celebrating my first Mother's Day with my son Noah, I wanted to take the time to give a special shout out to my wonderful mother Sharon Peterson Cheape for her selflessness and love. As well as wish all of you a very Happy Mother's Day! I hope you are able to spend time with your families and the loved ones who are influential in your life!

At the Hawaii State Capitol, the legislative session has officially come to an end! All of the bills that were submitted at the beginning of 2018 and have passed every committee as well as a final floor vote are now on the Governor's desk waiting to be signed and enacted into law. Mahalo for reaching out to my office to express your support or opposition to current bills, and thank you to those who formally submitted testimony during the legislative process this year. Please continue to contact me during the interim as we prepare and research legislation to introduce next year. During this past 2018 legislative session, I served on four House Committees (Economic Development & Business, Education, Higher Education, and Labor & Public Employment), where I had the opportunity to hear testimonies and weigh in on important issues. For a complete list of bills that have passed this legislative session, please visit the State Capitol Website: www.capitol.hawaii.gov.

A few weeks ago I sent letters to all my constituents just reminding everyone that every year when the legislature is not in session, I walk door to door to the homes in my district to learn constituents' concerns and to pass along helpful information. I look forward to meeting with you at your homes every year. I want you to know that I am also available to meet you in the community if you'd like to schedule a meeting. I'm always eager to hear from you if you have any questions, concerns, or ideas.

Also, as we all head into summer and water activities ramp up, May 19-26 starts a string of events for National Safe Boating Week. Nationally, in 2016, there were 701 reported deaths, and 83 percent of those victims were not wearing a lifejacket. Of the 701 deaths nationally, eight of those deaths were here in Hawaii. The North Shore is full of water activities, especially in the summer. Many of these water activities include non-motorized vessels such as snorkeling, surfing, stand up paddleboarding, and kayaking. I would like to stress the importance of safety for any water activities and always have a buddy or tell a friend about your water plans for the day and an expected time you will be back on land or home. A great website to visit for more boating and water recreation activity education is <http://dlnr.hawaii.gov/dobor/>.

The Safe Boating Campaign promotes wearing a

life jacket while boating. Upcoming Safe Boating Campaign events and activities include:

May 18: Wear Your Life Jacket to Work Day – This annual event is a fun, educational way to share information about life jackets with others. Boaters are encouraged to wear their life jacket to work, snap a picture and share on social media with the hashtags #lifejacket2work and #safeboating.

May 19-25: National Safe Boating Week – This annual awareness boating safety week is the kick off for the yearlong Safe Boating Campaign. Boating safety advocates are encouraged to plan an event in their community, and share #safeboatingweek and #safeboating information on social media using campaign resources.

May 19, June 9, July 7, August 11 – Ready, Set, Wear It events – All who enjoy boating can participate in one of these four events to raise awareness about the importance of wearing a life jacket and available



During a recess on the State House Floor, Noah spends time reading bills with his mom Rep. Lauren Matsumoto.

life jacket styles. Boating safety advocates can find resources to plan a #RSWI2018 event in their local community at www.safeboating-campaign.com.

As always, please feel free to contact me at (808) 586-9490, RepMatsumoto@capitol.hawaii.gov, or RepMatsumoto.com.



Registration is Open!!!!

May 19, 2018 at North Shore Sporting Goods from 10 a.m.-2 p.m.

May 30, June 6,13,20,27 at Waialua Rec from 6 p.m.-8 p.m.

Looking for Coaches Players, Sponsors, and Donations!!

Cost of Registration is \$220. We will have new uniforms with new colors

Contact President Ryan Benz 808-226-6939
email: waiualubullpups637@gmail.com
website: www.waiualubullpups2018

Olakino Maika'i

(Good Health)

By Naty Camit Hopewell

Congestive Heart Failure

Congestive heart failure (CHF) is a disorder that affects the heart's ability to pump blood effectively to the rest of your body. It affects approximately 5 million people in the U. S. and occurs predominantly in the elderly with almost 80% of cases occurring in those 65 years or older. CHF is a result of abnormalities in the heart structure (valve disorders, enlargement), abnormal rhythm, and poor function due to heart attacks and high blood pressure. CHF also occurs more often in people with multiple problems, such as high blood pressure, diabetes, angina, and chronic lung disease. When the heart muscle is unable to pump adequate blood out of the heart, fluid backs up into areas such as the lungs and ankles. People with significant CHF are unable to sleep in a flat position and need several pillows to sleep.

The goals for treatment of CHF are to relieve symptoms, avoid hospitalizations and prolong life. Treatment consists of medications that help the heart muscle pump more effectively and reduce fluid retention. It is important for a person with CHF to eat a low sodium diet since sodium in the body retains more fluid. Another approach is implantation of a device (below the left collar bone and above the heart) that is a pacemaker/defibrillator. The pacemaker helps establish a more normal pulse rate, especially in those with low pulse rates. The defibrillator shocks the heart into a normal rhythm when the electrical conduction of the heart goes crazy.

Studies indicate that the 2-year mortality rate for those with CHF approaches 50%. So, the best way to deal with CHF is to take measures to avoid it in the first place. Get your blood pressure and diabetes in good control. Stop smoking since nicotine increases your blood pressure and likelihood of blood clots, causes coronary heart disease and builds up fat in the arteries. Stop using drugs such as ice, which causes an enlarged heart and eventually failure. If you are obese, begin exercising, eat healthier and lose weight. Extra weight puts extra work on the heart. Here's to a healthier heart!

Ko'olauloa Health Center

293-9231

We accept everyone regardless of ability to pay. Improving the quality for life for all. Imua!



\$25
PER PERSON

Celebrating BLUE ZONES WAHIAWA

WELCOME. Join us during Pau Hana time, Pupus by Dots Restaurant, choice Byington wines, Hwayo soju, and Kuba awamori. And enjoy the music of Wahiawa's own **Doug Aton**.

Meet friends and make new ones. Wine@5 is a **Blue Zones** concept to help people make healthy choices easier.

RESERVE SEATS ONLINE @ WahiawaFresh.com/wine or call Cynthia Au at 808.367.3471



DOUG ATON

PUPUS WINE & SPIRITS MUSIC

\$18 PER PERSON NON-ALCOHOL GUESTS

Non drinkers can sample a variety of drinking vinegars

Floury!
Seating is limited.

Einwechter & Hyatt

A Limited Liability Law Partnership



John Hyatt, managing partner at E&H, is an experienced attorney serving the North Shore community with a practice focused on:

- Business Law and Planning
- Wealth Protection and Estate Planning
- Civil Litigation
- Real Estate Transactions
- Military Practice

Call John for a free consultation at 206-7177 or visit the website at www.eandhlegal.com.



North Shore Chamber of Commerce News

Chamber Welcomes New Board

The North Shore Chamber of Commerce voted for its 2018-2019 slate of Board of Directors at its annual general membership meeting on April 26th at Haleiwa Joe's.

Board members are: Marianne Abrigo, owner of Marianne Abrigo Properties; Lee Bryant, owner of North Shore Equipment Rentals; Sarah Cadiz, branch manager of First Hawaiian Bank; Robin Erb, operations and marketing manager, World Surf League; Howard Green, owner of North Shore Marketplace; Brian Hunnings, resort manager of Turtle Bay Resort; Bill Martin, owner of Island X Hawaii; Roderick Martin, licensed electrical contractor and entrepreneur; Marcia Murphy, branch manager of Pacific One Mortgage, Inc.; Bill Quinlan, retired; Charlie Teixeira, owner of North Shore Embroidery; Carolyn Unser, environmental scientist with Inclusion Environmental Consulting; and Glennel Warren, certified financial planner practitioner.

After the membership meeting, the new board selected its officers. Howard Green is the new chairman. Bill Quinlan, outgoing chairman, is now the vice chairman. Marianne Abrigo is treasurer; and Sarah Cadiz is secretary.

In his new role, Green says, "I'm looking forward to a year of working together as a community to accomplish things people have wanted for a long time." A long-time Chamber and Haleiwa Main Street member, he describes himself as a person with knowledge of how to accomplish things within both a community and political setting. "I plan to use my time as productively as possible," he says.

The next Chamber membership event is a Pau Hana, an after-hours social and networking opportunity scheduled Wednesday, May 23rd, from 5-7 p.m., at the Chamber office located at 66-434B Kamehameha Highway, Haleiwa, across the street from the Haleiwa Post Office. Refreshments will be served. These quarterly events are planned to be held at the Chamber office as well as other member businesses, upon their request.

More information about the Chamber, including membership information, is available by dropping by; telephoning 808-637-4558; or checking out its website www.gonorthshore.org.



North Shore Chamber of Commerce Board of Directors for 2018-2019 include the following civic-minded business owners and individuals: (front – left to right) Bill Quinlan, Robin Erb, Marcia Murphy; (back left to right) Brian Hunnings, Marianne Abrigo, Howard Green, Roderick Martin, and Lee Bryant.

 Blood Bank of Hawaii

SAVE OUR SUMMER

The need for **blood** doesn't take a vacation.



**Sunset Beach Elementary School
BLOOD DRIVE**

Saturday, May 19th
7:45 a.m. to 12:45 p.m.
Bloodmobile next to Farmer's Market
59 Kamehameha Hwy, Haleiwa, 96712

You can help. 848-4770 or BBH.org

DONATE BLOOD May 25 – September 3

and enter to win a weekly \$100 Foodland gift card and grand-prize neighbor island getaway, including airfare for 2 from Hawaiian Airlines, 3-night stay from Castle Resorts & Hotels and \$250 gift card.

No purchase or donation necessary. One entry per person per donation. Must be 18 or older to enter. Certain other restrictions apply. See complete details and official rules at www.BBH.org.



**TURTLE BAY
FOUNDATION**

GOOD VIEWS GOOD GREENS Event CAUSE

Turtle Bay Foundation Sixth Annual Golf Tournament
Benefitting North Shore and Ko'olauloa nonprofits and students **Three-Person Scramble**

TURTLE BAY PALMER GOLF COURSE, FRIDAY JUNE 1 2018

Check-In at 10:00 a.m. | Shot Gun at 11:00 a.m. | Awards and Dinner at 4:30 p.m.

All proceeds benefit the Turtle Bay Foundation, which was launched in 2013 to support and champion environmental, educational and cultural programs for families and students that call the North Shore home. To date, Turtle Bay Foundation has donated more than \$511,000 to 160+ North Shore and Ko'olauloa nonprofits and students.



To register or tee up for a sponsorship package, please visit www.turtlebayresort.com/foundation



Waialua High & Intermediate School sends our Mahalo to all the Career Day Speakers for making this a very successful day!

Aaron Tilton, Heavy Equipment Operator; Anthony Ozoa, Honolulu Police Department; Bill Martin, Island X Hawaii; Bridget Bourdeau, Nurse; Brittany Arvizu, Hawaii Marine Animal Response; Chad Kawakami, Pharmacist Assistant Professor of Pharmacy Practice; Chaz Barit, Pharmacist Department of Veteran's Affairs; Chris Bartolome, Honolulu Fire Department; Chris Quitevis, Senior Engineer; Darnell Arceneaux, Athletic Coach; Dr. Vanessa Agsalda-Rosenbush, Family Doctor; Dr. William McKenzie, Women's Health; Earl Alameida, Pilot; Gabrielle Asay, Veterinarian; Gil Riviere, Senator; Hugh Dunleavy, Retired, Chief Commercial Officer Qatar Airways; Jenny Yagodich, Malama Pupukea Waimea; John Mau, Honolulu Police Department; Juni Calaro, Work Packaging Manager; Kanani Oliveira, Business Owner; Kerry Atwood, Life Guard; Lauren Cheape-Matsumoto, Representative District 45; Leigh Eaton, Warning Coordination Meteorologist; Marianita Lopez, Attorney; Marie Revilla, Dietetics Program; Mark Kunimitsu, Honolulu Fire Department; Monica Esquivel, Director Dietetics Program; Nate Burgoyne, MC/DJ Services; Paul Asuncion, Motivational Speaker; Peggy Pavao, Retired Teacher; Regina Wilson, Former Military; Sarah Matthews, Lash Artist; Stacia Takeuchi, Education Coordinator; Stella Lacuesta, Education Coordinator; Steve Uyehara, Sunrise Anchor; Toni Choy, Surgical Technology Programs Director.

"A Beach House Social"

Thank you for your interest in our upcoming event celebrating Roy Yamaguchi's 30th Year of doing business in Hawaii! Our event is entitled "A Beach House Social" and takes place on Saturday, May 19th from 11:30-3:30. It is a beach picnic-themed, walk-around-style community centered event, featuring local artists/personalities, food vendors and entertainers. We cherish three groups of people at Roy's.... Our Guests, Vendors and Employees. The concept we threw together was to involve all three groups in an interactive platform, to allow them to mingle and become familiar with each other. We will host a mini farmer's market to encourage interaction between vendors and guests, showcasing our relationships with our local farmers, cattle ranchers, and other vendors.

The event is intended to be family and Keiki focused. We want to build relationships with our community and establish value in the Roy's Hawaii brand on the North Shore. Proceeds will benefit the Turtle Bay Foundation.

Participating artists include Hilton Alvarez and Clark Little. Live entertainment by Mike Tulba and Shawn Garnett. Local vendor booths by Ohia Bakery, North Shore Live Stock, Nozawa Kahuku Corn, Romy's Shrimp Farm, Pupukea Farms, Sweet Land Farms, Kolea Farms and Wicked HI Slush. Drink vendors include

Paradise Ciders, Lanikai Brewery, Kohana Rum and Southern Wine and Spirits.

Tickets pre-sold either in house at our restaurant (808) 293-7697, or online at royyamaguchi.com. Adult (21 and over) tickets prices are \$75++ and include 2 drink tickets. Teenager (13-20) ticket prices are \$40++. Children 12 and under have free admission (one free keiki per purchased adult ticket). The event will take place in our restaurant as well as on the beach... appropriate footwear is suggested. Thank you to Turtle Bay for partnering with Roy's Beach House and offering complimentary parking for this event.

Quality Tile Crafts

"No job too big or small!"

Specializing in Ceramic Tile,
Travertine, Marble, & Slate

Kevin Wilson

cell (808) 864-4985 office (808) 638-8492
www.QualityTileCrafts.com Free Est.



BEACH HOUSE SOCIAL

HOSTED BY ROY YAMAGUCHI

MAY 19
11:30 A.M. – 3:30 P.M.

Come and enjoy great food and beverages at our beach front farmer's market! Meet and talk story with the farmers, ranchers and other local vendors that support Roy's Beach House and Turtle Bay Resort in an interactive, market-style setting. A portion of the proceeds will benefit the Turtle Bay Foundation.



TICKETS ARE ON SALE NOW!
ROYYAMAGUCHI.COM



Talking Story with Tom Jacobs

The New Haleiwa Hotel ... a Missed Opportunity

In 1888, Ben Dillingham had a problem. He had built Oahu's first railroad to haul sugar cane from the North Shore into town, but his trains returned to the "country" empty ... Dillingham had no return load. He solved his problem by building a modern, Victorian-style, 40 room hotel on the North Shore, opening in 1899. Now his trains carried well-to-do "townies" and mainland visitors on their return from Honolulu. His "Haleiwa Hotel" featured a dramatic staircase to the second floor, scenic ocean and mauka views, in-suite telephones and electric lighting, separate private cottages, shooting opportunity at a "Men's Lodge," boating tours, and a billiards room. A stable allowed horseback tours of the nearby sugar mill. Later, a 9-hole golf course was added. It was the first of Oahu's premier hotels: the Moana in Waikiki opened a year later, the Royal Hawaiian not until 1927.

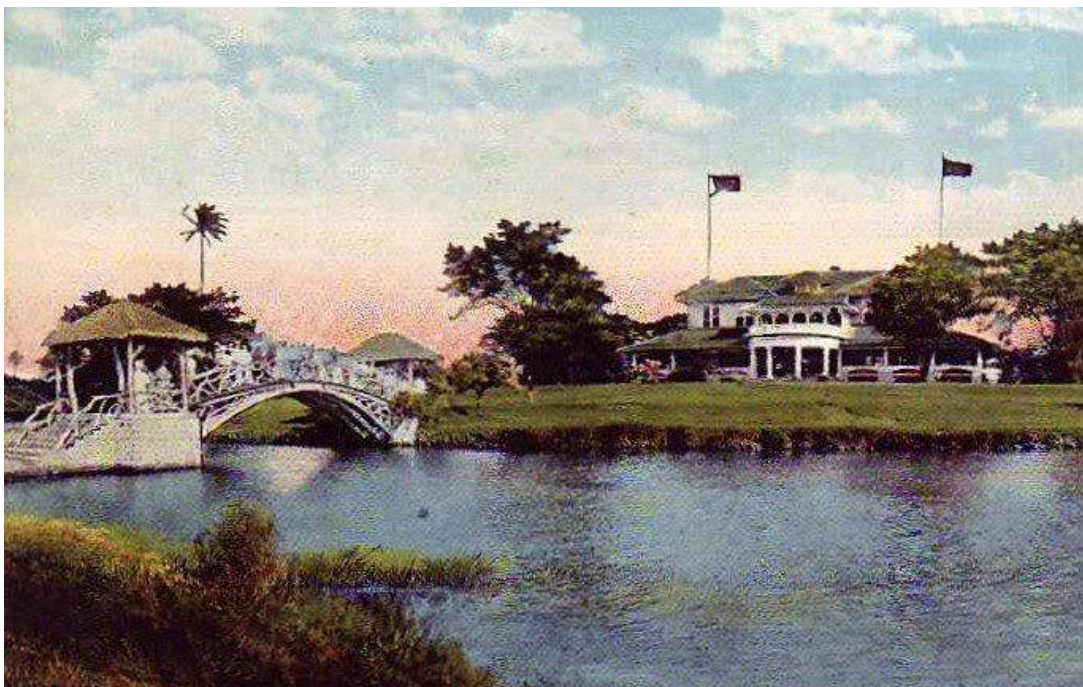
Over time the Haleiwa Hotel lost its battle with newer hotels in Waikiki. It became a private beach club, then an Army officer's recreation center during World War II. It was demolished in 1952, but not before giving its name to Haleiwa Town, the picturesque plantation town that grew up around it.

A few years ago, Andy Anderson, a local entrepreneur and developer, pursued his dream of recreating a replica of the original Haleiwa Hotel. It was to be his last, best project, his gift to the North Shore. He

purchased the Jameson's Restaurant building across from Haleiwa Beach Park and drew up architectural plans for a new Haleiwa Hotel on that site. And ... his plans generated local opposition. Some residents opposed any "Waikiki look-alike" in the country ... never mind that Anderson was only contemplating 40-odd rooms, with the original architecture. Other locals viewed a resurgent Haleiwa Hotel as a great idea, so controversy grew. As prospects for Anderson's hotel at the Jameson's property dimmed, he changed plans. He rebuilt the Jameson's building and opened his Beach House restaurant, a classy, beautiful addition to the North Shore that has taken its place alongside other local first-rate eateries like Haleiwa Joe's, Roy's, and Lei Lei's.

... and Andy Anderson made one more try. He transferred his planned Haleiwa Hotel to an ocean-front site between Haleiwa Beach Park and Pua'ena Point. Surely this out-of-the-way location wouldn't offend the local community. Except ... Kamehameha Schools, owner of Anderson's proposed site, declined a proposed lease or sale. After nearly a year's encouragement to Anderson, Kamehameha Schools determined that the proposed hotel location contained probable historically significant sites and/or other impediments to development. This assessment was made in spite of an exhaustive archeological study showing no such evidence, probably because the location had been graded years earlier to locate a World War II airstrip. Regardless, as Anderson told me, "Kamehameha Schools owns the land and is free to determine its ultimate use, which they did. Damn!"

So Anderson's dream has dimmed, and the North Shore has missed an opportunity to recreate an architectural and historical North Shore icon and gem. It's just too damned bad.



The Haleiwa Hotel



North Shore Surfing Wireless Betty Depolito - banzaibetty.com

FOUNDERS CUP OF SURFING HONORS RANDY RARICK

Randy Rarick was honored at the Founders Cup Surf Competition for his contribution to surfing. The executive director of the Triple Crown and one of the original organizers of the first competitions in the World has traveled and surfed in over 60 countries. He was the Co- Director of the International Professional Surfers the precursor of the ASP. Hawaii's Fred Hemmings was also honored. The Founders cup is the first ever pro competition at the wave pool in Lemoor California that Kelly Slater and company designed.

PIPELINE COMPETITOR TATIANA WESTON-WEBB COMPETES FOR BRAZIL

The International Surfing Association (ISA) formally approved Kauai's Tatiana Weston-Webb's change of nation request to compete for Brazil in future global Surfing events. Weston-Webb is a well know surfer who has a dual citizenship for Brazil and the United States. Weston-Webb is eligible to represent Team Brazil in the ISA World Championships and participate in the Olympic qualification process for Tokyo 2020 under the Brazilian flag. As the world governing body recognized by the International Olympic Committee, the ISA is required to validate any requested change of nationality, also in compliance with the Olympic Charter. "I'm excited to announce that, moving forward, I will be representing Brazil on both the WSL Championship Tour as well as in preparation for the 2020 Olympic Games in Tokyo. This is a major decision for me and one that I'm really excited about", said Tatiana recently by press release. Tatiana was born in Brazil and raised

on Kauai. "Both the community and the waves played a huge role in shaping who I am as a surfer and as a person. I am very grateful for that." Weston-Webb is one of a few surfers that have changed countries for the future of their surfing.

WAIALUA HIGH SCHOOL SURF TEAM RAISING FUNDS

The Waialua High School Surf qualified for the NSSA National Interscholastic Championship in Southern California and they are on the move raising funds for the team to go there. There will be a fundraiser at Jerry's Pizza on Friday May 11th from 4-8pm. You can do the raffle and win a surfboard and other great prizes! Jerry's Pizza will be donating 20 percent of everything to the team and there will be live music! For more information and direct donations contact Marsha DuPont Taylor at Waialua High School. See ad on page 20.



Waialua High School Surf Team



Video * Media
*** Photos & Press ***
Banzai Productions
Produces all Your Video
Radio & Media Needs
Special Rates on
Commercials - Web Videos
Photos - Social - Press
25 Years of Experience

808- 781- 2535



Torches and other Gingers in Waimea Valley

By David Orr, Botanical Collections Specialist, Waimea Valley on Oa`hu's North Shore.

Spring is the time when many gingers start flowering or emerge from underground dormancy. Many waxy, long-lasting flowers of *Etlingera*, the genus for the torch ginger, are starting to bloom in Waimea Valley's "Torch Ginger Alley" in the farthest (from the main road) part of the large Ginger/*Heliconia* collection between the 2nd and 3rd bridges. The "Alley" is planted next to the one tributary stream, the Kaiwiko`ele that flows for about 200 yards from this spot before joining the main waterfall stream under the 2nd bridge.

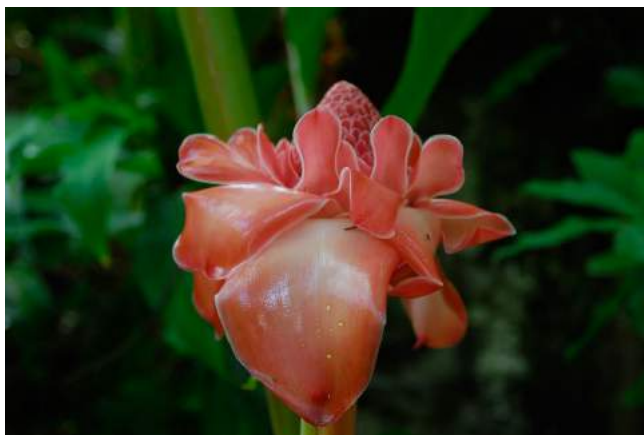
The flowers of all torch gingers grow on a separate stalk from the tall, arching leaves. Twenty accessions, four wild-collected, have come to Waimea since 1975. The most well-known species is *Etlingera elatior* of which we have at least five forms. The beautiful pure white form is at the far end of the "Alley". Halfway in are the common red and one that came as "Porcelain Pink" with uniform pink petals. Other pink torches in the Valley will make a ring of red flowers atop the pink head. One uncommon red torch has extremely narrow white edges to all the petals. Two less commonly grown torches are on both sides of the entrance: The "Malay Rose" is *E. venusta* with grey, pink, and white parts to its flower head, and opposite is the "Rose of Siam", *E. corneri*, as it was officially named by former Pupukea resident and Waimea botanist, John Mood. John also discovered a new species in Borneo which he named *E. rubromarginata* with a low inflorescence uphill from the white torch. Closest to the stream is a large stand of the "Tulip Torch Ginger" *E. hemisphaerica* with tall side petals resembling a tulip as it's growing before a mass of its small yellow-edged flowers splay out to make it become a very different looking inflorescence.

There are no native gingers in Hawai'i, however, the Polynesians brought two useful species which are planted all over the Valley. They've been completely underground for the last few months, but are now awakening with the spring rains and longer days. There's only one genus of ginger in all of the

Americas, yet the diversity in Asia is staggering and many have evolved to cope with the monsoonal rains that are common there. Before and after the monsoons are long, dry periods, and the plants have learned to retreat to their underground rhizomes in a sort of hibernation before the rains come back. The two Asian gingers brought to Hawaii before contact are the 'awapuhi and 'olena. The first is the "shampoo ginger" (really used as a conditioner), *Zingiber zerumbet*, and the second is turmeric, the indispensable (and orange colored) part of any curry, *Curcuma longa*, which is also one of nature's best medicinal plants, an anti-inflammatory which fights infections.

Throughout the collection, *Kaempferia* and *Curcuma* species are appearing for their summer performance. For some species, like *K. pulchra*, the peacock lily, richly patterned leaves come up first. Many species of *Curcuma* send up their pink, yellow and green flowers before their leaves which all can be seen at the Ginger and *Heliconia* Garden.

We invite you to come and enjoy this botanical beauty, May and June are optimal months so bring the family for a stroll through our Torch Ginger Alley.



Waiialua High School's Project Grad Pa'ina Night A Big Success

On behalf of the Waiialua High School Project Graduation 2018 Committee, a big mahalo to all who supported and attended our "Pa'ina Night" at Dot's Wahiawa on March 17, 2018. It was a fun-filled evening shared with family and friends who came from our community and afar. The fundraiser exceeded our expectations with many cool raffle prizes, a live auction of sports memorabilia and eclectic art collection from local artists. The entertainment line-up was equally amazing, making this event very special.

A big shout out to the following sponsors and supporters who helped make it possible: Marlene Abrigo • Dale Andres • Don Arakaki & Uncle Tom - Old Soldiers of Hawaii (World War II Veterans) • Bobby Bunda • Juni Calaro • TJ Miram Cuaresma • Leslie Drechsler • Kamakakehau Fernandez • Dee Franks • Micah Hatchie • Stephanie Hatchie • John

& Lillian Heath • Michelle Hernandez • Hawaiian Blend: Allan Poki, Aaron Vera Cruz & Mikioe Parish • Island Sign Service • Kapili Roof & Painting • Garret Kojima • Gwen Lavarias • Melissa Lorenzo • Los Garcias Mexican Restaurant Maunaloa: Richard Gideon & Kahi Kaonohi • Lori McKeown • Ruthie Murray • Michael Nacapuy • David Nahinu • Milton Nahinu • Pono Nahinu • Ted & Cathy Nakamura • Oils of Aloha • Leilani Olayon • Lance Orillo & Friends • Brenna Passos Julie Patacchia • Kim Quinones • Lela Smith • Ryan Souza • Dan Sutton • Mark Talaeai • UFC Gym BJ Penn • Waiialua General Store • Alyssa Yamanouchi

Mahao Nui Loa from the Waiialua High School Project Grad 2018 Volunteers: Melanie Hatchie, Gloria Razon, Lillian Heath, Melissa Lorenzo, Helen Pascual and Lenelle Leong Dicion

Ho'ola Na Pua celebrates Pearl Haven Campus Site Blessing & Ground Breaking

Haleiwa, HI- Bettina Mehnert, President & Chief Executive Officer, AHL (formerly Architects Hawaii, Ltd), Elected Officials, Distinguished Guests, the Board of Directors of Ho'ola Na Pua and its staff and volunteers celebrated with a traditional Hawaiian blessing and hula lead by Kimo and Leilani Kahoano to bless the new site of the Pearl Haven Campus.

Ho'ola Na Pua (HNP) is developing Hawaii's first licensed residential special treatment campus for underage females who have been sexually exploited. It's a sanctuary of healing. We call it Pearl Haven.

The Pearl Haven Campus is situated on 12 acres of pristine rural community on the Island of Oahu. The grounds will have brand new gardens and greenhouses. In the center of these grounds will stand the newly renovated 20,000 square foot, sustainable Pearl Haven therapeutic facility. The existing structure needs near total renovation. Some of the existing structure will remain but more than 90% of the campus will undergo renovation.

"Pearl Haven will be a sanctuary for our most vulnerable in our community: our children," Munoz (President/Co-Founder HNP) said. "We are thankful for the community coming together to create the safety net and response services needed for exploited girls. This is about hope, healing and renewal for children and their families."

There are many stakeholders invested in this first-of-its-kind project – from the State of Hawaii to the Department of Land and Natural Resources to elected officials. The renovation project is part of AHL's 1% Pro Bono Program, an annual program that provides pro bono architectural services to nonprofits. As part of the program, AHL brings together a team of partners

who are also giving pro bono services. The project, co-led by Design Partners Incorporated, includes: KAI Hawaii, Inc., InSynergy Engineering, Inc. and Mina-toishi Architects.

"I cannot say enough about the team of Ho'ola Na Pua for taking on such a big venture at Pearl Haven. I thank them for bringing the sex traffic trade out in the open for our girls that deserve so much more," remarked Sarah Cadiz, First Hawaiian Bank branch manager, Haleiwa.

The celebration was marked with many of the community's business leaders and elected officials. Both offices of Congresswoman Tulsi Gabbard and the Lt. Governor Doug Chin offered congratulatory remarks as did Council Member Kymberly Marcos Pine in person. Harry Saunders, Chairman of HomeAid Hawaii, one of the many supporting organizations, challenged the guests to support HNP with their time, talent and resources.



**In Memory of Dan Taylor
1945- April 18, 2018**

Donations can be made to:

**The Private Sector Hawaii (Purple Van Food Program)
Po Box 1109**

Haleiwa, HI 96712

Of which Dan was a major supporter.

WAIALUA FEDERAL CREDIT UNION

HOME EQUITY LOAN

3.75% APR*

CALL US (808) 637-5980 OR VISIT US WWW.WAIALUAFCU.COM



*Annual Percentage Rate based on an index of 3.50% plus the monthly average of the 26 week Treasury Bill (Auction High) and may be adjusted annually each March. Please call for more details.

BULLETIN BOARD

Being YOU

LAURA CHO-STUTLER, PSYD
LICENSED CLINICAL PSYCHOLOGIST

66-935 KAUKONAHUA RD
SUITE 103
WAIALUA, HI 96791

808.387.6764
WWW.BEINGYOUHAWAII.COM
DRCHOHOSTUTLER@GMAIL.COM

Linda Yadao

BASI CERTIFIED
PRIVATE PILATES EQUIPMENT CLASSES

808.637.1230
lindayadao@gmail.com

Maluhia Place
A PILATES SPACE

ADAMS & COMPANY
REAL ESTATE BROKERS



Alison R. Mitchell
REALTOR-ASSOCIATE®
(808)256-0152
RA 62065

NorthShore Marketplace
66-250 Kamehameha Hwy.
Haleiwa, HI 96712
alisonmitchell808@gmail



LULU'S LEI + BOUQUETS
FLORALS + WEDDINGS WORKSHOPS + EVENTS
WAIALUA HAWAII

WWW.LULUSLEIANDBOUQUETS.COM
ALOHA@LULUSLEIANDBOUQUETS.COM
808.366.4290

North Shore Deliveries Available

"THE BULLETIN BOARD THAT IS IN EVERYONE'S HOME"

BULLETIN BOARD



Featuring the largest selection of certified organic produce on the North Shore.
 No panic...ours is organic.
 Open 7 days.
 Mon.-Sat. 9am-7pm.
 Sun. 9am-5pm

66-445 Kam. Hwy
 Haleiwa, Hawaii 96712
 Next to the Post Office
 808-637-6729 • 808-637-1922 fax



DR. PORTER TURNBULL
 Chiropractic Orthopedist
 (808) 638-8740
 Appointments available Mon.-Sat.
 (evenings by appointment)

- Industrial accidents & auto injuries
- Sports injuries • Spinal care
- Safe, Effective, and Gentle

N-C PLUMBING & SUPPLY

Cont. Lic. No. C-8913



- RESIDENTIAL & COMMERCIAL SALES & SERVICE
- CONTRACTING & DESIGN • HOME PLUMBING SERVICE
- PLUMBING FIXTURES, HEATERS • FREE ESTIMATES

Nestor P. Calilao (Owner) Bus: 637-8662
 P.O. Box 769 Res: 638-5157
 Waialua, HI 96791 Cellular: 372-8718

BOW WOW BUNGALOWS

Licensed Boarding Kennel
 North Shore, Oahu
 Reasonable Rates
 Ph. 637-2562

These Dogs Have Fun!

Hawaiian Lumber LLC

Reclaimed local hardwoods available
 - various sizes of live edge slabs
 - custom milling of dimensional lumber
 - benches and tables in stock
808-371-1331

LTC Laie Trucking Company, LTD

- * Ready Mix Concrete * Recycled Aggregates
- * Pump Service * Hauling * Equipment Rental

PH: (808) 293-8710 PH: (808) 293-1296
 P.O. Box 121 FAX: (808) 293-2890
 Hau'ula, HI 96717 laietrucking@hawaiiantel.net

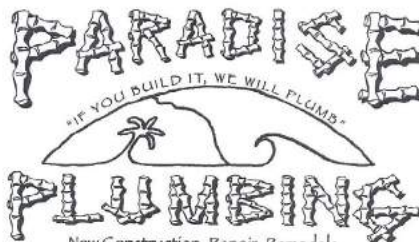
"A LOCAL COMPANY, BUILDING A LOCAL COMMUNITY"

Munden Design & Build

Lic.#BC19632

Design • Plans • Permits • Construction
 Additions & New Residences
808 391-8616

Providing quality work since 1978



New Construction, Repair, Remodels
Dale Christensen C-29856 (808) 368-1473

New Construction • Drain Cleaning

Got Leaky? Call Greekzi!
 Line Locating • Copper • Galvanized
 Residential • Commercial • Remodels

372-1820
Greekz Plumbing
 #C-32939
Plumbing Service & Repair

Greekz Plumbing

License# C-32939
 Phone 372-1820

School of Champions

Established 1966

International Karate Federation



IKF Waialua Dojo
 Waialua Elementary School

Beginner classes - ages 5 & up
 Mon & Wed 5:00 - 6:00 pm

Intermediate classes
 Mon & Wed 6:00 - 7:30 pm

Call 780-5457 or email: wvbinz.bb@gmail.com

1ST ANNUAL


WAIALUA HIGH SCHOOL SURF TEAM PRESENTS

"JERRY WOULD CHANCE'EM"

RAFFLE PRIZES


LIVE MUSIC

FUNDRAISING EVENT



@ JERRY'S PIZZA

FRIDAY MAY 11TH, 2018 @ 4PM-8PM



CHANCE'EM

PROCEEDS SUPPORT TEAM GOING TO
NSSA NATIONAL INTERSCOLASTIC
SURFING CHAMPIONSHIPS 2018
IN CALIFORNIA



The Pupukea Seniors welcome new active seniors to join in the fun of monthly socials with lunch and trips. Here are some members at our recent "Whale Watching" adventure. For more information call 638-7213.



North Shore Food Bank
Food Bag Distribution
 1st & 3rd Wednesdays 10am - 12pm
 Waialua Community Association
 Donations of non-perishable canned foods can be dropped off at the North Shore News office.
 For more information: 637-3138
 northshorefoodbank@gmail.com

Waialua Public Library UPCOMING EVENTS

Used Book Sale

Saturday, May 19, 9am-2pm
 Weather Permitting

Readers' Group

Thursday, May 24, 9:30-11am
The Unlikely Pilgrimage of Harold Fry
 by Rachel Joyce

Writers' Group

Saturday, May 12, 12:30pm
 Topic: "Light in the Neighbor's Window"

Waialua High & Inter. School

Art Show 4/26-5/15

Come by the library to enjoy a wide range of student art!

Recurring Events

Toddler Time - Fridays, 10am
Storytime - Saturdays, 10am
Computer Instruction (by appointment)
 Fridays, 9am

67-068 Kealahou St, Waialua, HI 96791
 808-637-8286

North Shore News



2018 Schedule

PUBLICATION DATE	EDITION	DEADLINE DATE
May 23	#10	May 11
June 6	#11	May 25
June 20	#12	June 8
July 4	#13	June 22
July 18	#14	July 6
August 1	#15	July 20
August 15	#16	August 3
August 29	#17	August 17
September 12	#18	August 31
September 26	#19	September 14
October 10	#20	September 28
October 24	#21	October 12
November 7	#22	October 26
November 21	#23	November 9
December 5	#24	November 23
December 19	#25	December 7

Direct-Mailed to Every Home
 MOKULEIA · WAIALUA · HALE'IWA ·
 KAHUKU · LAIE

Every Other Wednesday
 12,000 copies

"The North Shore's most popular publication" since 1970
 (808) 637-3138 ·
 NShoreNews@aol.com · NSN4Linda@aol.com
 www.northshorenews.com

CAR WASH !



Saturday, May 19, 2018
 9am to 2pm

Waialua Community Assoc. in Hale'iwa

Proceeds to benefit the North Shore Food Bank
 (to volunteer or donate call 637-3138)

Haleiwa Evangelical Mission International




Come and join us
Sunday's at Waialua
Elementary School Cafeteria

Sunday School at 9:00 am
Worship Services at 10:00 am

For Prayer
Call 637-4567

Blessed to be A Blessing



CLASSIFIEDS

The North Shore News is published every other Wednesday and mailed free of charge to all North Shore homes and businesses. Extra copies may be obtained at our office.

PRESS RELEASE POLICY: Submit press releases in person, mail or email to Editor, North Shore News, 66-437 Kam Hwy., Suite 210, Haleiwa, HI 96712. Please type your releases and keep them shorter than 200 words unless they are of an unusual news interest. Releases should be viable news stories and are published on a **space available basis only**, with priority given to those received in our office first. You may attach photos. We are not responsible for the return of any photos. All materials are submitted at owner's risk. We reserve the right to edit and/or refuse all submissions including advertising.

EDITORIAL POLICY: We welcome articles and letters from our readers. Letters to the Editor are published on a space available basis only and preference is given to shortness of length, and quality of content. We prefer to run not more than one letter, per person, per 6 month period. Letters subject to edit.

Views expressed by our contributing writers and advertisers do not necessarily reflect the view of the management and staff of the North Shore News. All rights reserved. Reproduction in whole or part without permission is prohibited. © 2018.

Editor & Classifieds
Linda Seyler

Typography
Downtown General Store

Web Social & Digital Ads
straffordmedia.com

Contributing Writers
Tom Jacobs
Betty Depolito
Naty Hopewell

City Councilman Ernie Martin
State Representative Lauren Matsumoto
Senator Gil Riviere
Malia K. Evans

Photography
Banzai Productions



Please recycle this newspaper.

SERVICES

SHORE ELECTRICAL SERVICE
New Const-Remodels
638-0049 / Lic#C20777

Computer Problems?
I can fix any MAC or PC.
Chris 371-3089

Andres Plumbing
All your plumbing needs
808-256-7337 Lic#C24500

Carpentry & Painting Services
Repairs/Remodeling,
Termite Rot, Doors, Cabinets,
Countertops, etc.
Reasonable Rates 271-6584

Green Gypsy Thrift Shop
Waialua—(808) 366-4000
Next to Paalaa Kai Bakery

Dog/Cat Nail Trimming
At your home—only \$20.00
Call 808-388-5336

ROOFING
New roofs, repairs, prompt service
License# CT-23755 • 808-625-8900

North Shore Pet Nanny
Experienced pet sitting,
Walking, training etc...
Call Kathryn
808-489-3645

paintpaina.com
Hawaiian Style Paint Parties!
Call 808 781-2218

Happy Mother's Day!

Paumalu Electric Inc.
C 18074

Residential & Commercial
New Installation & Repairs
Renovations. Remodels
Electric Meter Replacements
Dave Hancock 638-9054

Hawaii Tree Co.
Trimming & Removal
Professional-Reliable
Free Estimates
462-2749

North Shore Car Rentals
Low cost rental cars.
Rates are low by providing
slightly older cars with a
"local" vibe to them, don't
be fooled. All vehicles are
well maintained and safety
inspected. please visit
northshorecarrentals.com or
call (808) 260-4960.

Radiant Skin Care & Waxing
Aynjul Benigno
Licensed Esthetician
Call or Text 808-222-8124
radiantskincaresandwaxing.com
66-935 Kaukonahua Rd.,
Waialua

Massage Therapy
Specializing in Swedish
relaxation, Sports Massage
Deep Tissue-Gift Certificates
25 yrs licensed experience
MAT 8865
Call Allen 638-0346

Aloha Computer
PC/MAC Repair/Virus Removal
Fax/Copy/Internet Access
Located next to Paalaa Kai Bakery
Open M-S, 10-4.
372-2667 or 237-4558

BIKRAM YOGA

BUILD STRENGTH,
FLEXIBILITY & BALANCE
BEGINNERS TO ADVANCED
www.bikramyogahawaii.com
637-5700

HARVEY'S TOWING LLC

24 hr Towing Service
Lockouts, Jumpstarts &
Recovery. Specializing in
opening locked car doors.
Call anytime 478-0333

Your Clean Home
Vacation/Residential
Home Cleaning & Laundry
Affordable • Reliable
• Green Cleaning
For Free Estimate
Call 728-5035

BOBBY'S BODIES

Tuesday evenings at 5:00 p.m.
• Body Toning
• Cardio Pump/Fat Burner
For more info: call Bobby, owner of
BOBBY'S BODIES at 637-4150

LEARN TO SWIM AT THE HAWAII SWIM SCHOOL

ON THE NORTH SHORE
Developing swimmers since 1982
Haleiwa Rd. at Smiley Place
637-4863

WAIALUA CAR WASH

66-540 Kam Hwy, Haleiwa
Tues-Fri 10-4, Sat 9-3
For info 714-726-8287

HOW TO CONTACT THE NORTH SHORE NEWS

Letters to the Editor, and other items submitted for publication consideration may be sent to us via:

MAIL: 66-437 Kamehameha Hwy., Suite 210, Hale'iwa, HI 96712

E-MAIL: NShoreNews@aol.com

PHONE: (808) 637-3138

Office Hours: Monday – Friday 10 a.m.-3:30 p.m.

www.northshorenews.com

CLASSIFIED ADS

Next Issue - May 23, 2018
Deadline Date - May 11, 2018

BUSINESS SERVICES CENTER

Fast & Convenient Copy, Fax, Scan, Computer/Internet, Laminate, & More



Across from the Haleiwa Post Office

637-4558 • gonorthshore.org
#gonorthshore

MAULOA FOOD PANTRY
at Sunset Beach Christian Church
Tuesdays, 9am - 12 noon

FREE ADS

Garage & Yard Sales, Reunions, Lost & Found.
Email ad to: NShoreNews@aol.com

Classified Ad Rates

3 lines (min.) \$18.89
4 lines \$25.13
5 lines \$32.45
1" Box Ad \$41.88
(27 characters in each line)

Include your contact information.
**Ads can be dropped off in mail slot, mailed, or emailed. Pay by check payable to: North Shore News or credit card by phone order.*

We reserve the right to refuse any advertisement with a full refund.
North Shore News • 66-437 Kam. Hwy., Suite 210, Haleiwa, HI 96712
• (808) 637-3138 • NShoreNews@aol.com



Marianne Abrigo, Properties

Specializing in - North Shore Real Estate

Ask for our list of available properties and/or a free market analysis.

Marianne M. Abrigo
"Realtor since 1974"

Office **637-3511**
Fax **637-0777**
Email **mabrigo222@aol.com**

HELP WANTED

Household Help
Beachfront Estate
8 hrs per week
808-637-0808

NORTH SHORE SURF SHOP ALOHA AMBASSADORS NEEDED!
NOW HIRING! Sales Staff and Manager Positions-Hard Working and Friendly-Japanese, Korean, Chinese Speakers are a PLUS-COME JOIN OUR OHANA!
CALL 637-5002 NOW!
Apply in Store
66-150 Kam Hwy, Haleiwa.

Retail Sales Surf & Sea

Hawaii's Ocean Sports Headquarters is always looking for hard working, energetic people to become a part of our sales team. Good pay, bonus, benefits. Japanese speaking a plus. Ocean sports experience and dive instructor wanted. Please contact surfnsea@surnsea.com for details.
Apply in person daily 9am-7pm
62-595 Kam. Hwy., Haleiwa

FOR RENT

TABLES & CHAIRS
Call North Shore News
637-3138
All proceeds go to the North Shore Food Bank

Room in private condo at Ono Vista in Waialua. Furnished room 2/1 townhouse style condo. Pool,sauna, parking, cable, wifi, water and electric included \$950/month.
Professional person please.
1st & last references required
781-2535

FOR SALE

Nearly new handheld blower/vacuum. Asking \$70.
637-9553

MISCELLANEOUS

Bulky Item Collection
768-3200

Parkinson's Group Meeting
Group meets at the Waialua United Church of Christ on the 1st Saturday of every month. Friends & Family Welcome
Next meeting June 2 @10am
Abel 253-9541

North Shore Food Bank
1st & 3rd Wednesdays
Waialua Community Association
10 a.m. - 12 noon

OPEN MEETING OF N.A. CLEAN IN DA COUNTRY
THURSDAYS 6:30-7:30PM
Mondays 6:30pm-7:30pm
Saturdays 9:30am-10:30am
Sunset Beach Recreation Center
59-540 Kam Hwy

REPORT ABANDONED VEHICLES
Department of Customer Service
768-2530
email: complaints@honolulu.gov

Waialua Robotics Team Luau Benefit
at Dole Plantation
Thursday, May 10, 5:30-8:30p
For tickets call 637-8292

Saga of North Shore Part 3 The Voyagers
Saturday, May 12,
11 am -12pm
Waialua Library

Hawaiian Legacy Forest
Thursday, May 15, 5:30-6:30p
Kahuku Library

Learn about the mission of the Hawaiian Legacy Forest, revitalizing endemic species for our island environment, and the Native Hawaiian tree restoration at Gunstock Ranch.

Waialua Farmers Co-Op Market
Waialua Sugar Mill
Saturdays, 8:30am-1:00pm

OFF da ISLAND
Are you leaving Oahu on vacation or business? Do you live on a neighbor island, the mainland or foreign country and subscribe to the North Shore News? Try send us a photo of someone in front of a sign or landmark holding a copy of the NSN. Email your photo along with the person or persons' name, community of residence, telephone number and photo location to: NShoreNews@aol.com.

Hawaii Polo Sunday in the Country
Polo Matches (2-5pm)
For tickets & info:
HAWAIIPOLO.com

NOAA Stranded, Entangled Injured Sea Turtles
(808) 725-5730

Sunset Beach Community Association Meeting
Wednesday, May 16, 2018,
7pm-9pm
Sunset Beach Recreation Center

The North Shore Seniors would like to Thank all of our sponsors who celebrated our 30 year Anniversary NS Air Conditioning, Dole Plantation, North Shore Food Bank, North Shore News, Waimea Valley and Dole Foods.

LIHEAP
Low Income Home Energy Assistance Program assists low income households with bill payment assistance. LIHEAP will be taking applications at the Waialua Community Asso. Wednesday, May 16 11am - 2pm

If you would like to Congratulate a graduating senior in private or homeschool in the May 23 issue, send students name and school to: NShoreNews@aol.com
deadline May 11



Like us on Facebook:
[Facebook.com/NSNewsHaleiwa](https://www.facebook.com/NSNewsHaleiwa)



2018



Summer Sprint

June 09
1 Mile

Sunset to Pipeline

Waimea Bay Swim

June 23
1.2 Miles

Waimea Bay

Chuns to Waimea Bay

July 7
1.6 Miles

Chuns Reef to Waimea

Lani's to Pua'ena Point

July 21
1.9 Miles

Laniakea to Pua'ena Point

North Shore Challenge

August 4
2.3 Miles

Pipeline to Waimea

CHECKS PAYABLE TO: Waikiki Swim Club

LATE ENTRIES: \$70.00 for Day of Race sign up or after deadline! Please enter early!

Do not send in entries after mail in date! **Early Entry for all 5 races ends May 31, 2018!**

Mail Entries c/o Linda Moran: 94-463 Alapine Street, Waipahu, HI 96797-4515

CHECKS PAYABLE TO: Waikiki Swim Club

AWARDS & DIVISIONS: Elite men & women, 10 & under, 11-12, 13-14 15-19, standard 5 year age groups thereafter (20-24, 25-29, etc.).

SWIM CAPS ARE MANDATORY and are provided to registered swimmers at their first NSSS swim of the summer.

NOTE: Swimmers receive only one cap during the series. You may use your own swim cap but bright color caps are highly encouraged.

ASSISTANCE: If you receive assistance from water patrol, you must come to the beach & turn in your chip & your are a DQ...

INSTRUCTIONS: northshoreswimseries.com **All races start at 9:00am!**

TIME LIMITS: Swimmers must pass the half way point in the Chun's to Waimea, Laniakea to Pua'ena, & North Shore Challenge by 1.5 hours. Swimmers not passing half way mark will be escorted to shore. Water Patrol makes the final call on this time period, safety first.

EQUIPMENT: No fins, paddles or flotation devices, wetsuits, long sleeves, long legs or speed suits allowed. Snorkels are OK.

MORE INFORMATION: northshoreswimseries.com · northshoretriathlon@gmail.com · 808-372-8885

Like us on Facebook at "North Shore Swim Series" for race updates, conditions & the latest news on swims, triathlons & events in Hawaii · Check out waikikiswimclub.org for weekly swims, swim clinics, ocean races & biathlons!



Early Entry for all 5 Races!	Aloha Salads Summer Sprint	Cholo's Waimea Swim	Jaco Chuns to Waimea Bay	NSSF Lanis to Puaena Point	Keawe Adventures Pipeline to Waimea	Total Enclosed \$ _____	Day of Race Or after mail in date \$70 <input type="checkbox"/>
Enter by May 25, 2018	Mail in by May 30, 2018	Mail in by June 13, 2018	Mail in by June 27, 2018	Mail in by July 11, 2018	Mail in by July 25, 2018		
\$175 <input type="checkbox"/>	\$45 <input type="checkbox"/>	\$45 <input type="checkbox"/>	\$45 <input type="checkbox"/>	\$45 <input type="checkbox"/>	\$45 <input type="checkbox"/>		

	M	F			S	M	L	XL
LAST NAME	Sex	Age	D.O.B.	T-Shirt Size				
FIRST NAME	EMAIL				Phone #			

WAIVER AND RELEASE STATEMENT: I agree to comply with the regulations and event instructions of the 2018 North Shore Swim Series. I know that competing in the ocean may be hazardous, I am aware of and assume all risks with participating in this event, including but not limiting to, contact with other participants, effects of the weather including surf conditions and currents, and sea life. Knowing these facts and in consideration of the North Shore Swim Series accepting my entry, I hereby for myself, my heirs, my executors, administrators, or anyone else who might claim on my behalf, covenant not to sue, and waive, release, and discharge the North Shore Triathlon, Waikiki Swim Club, City & County of Honolulu, State of Hawaii, The United States Government, Surf n Sea, Aloha Salads, Cholo's, Jaco Rehab, North Shore Soap Factory, Aqua Sphere, Keawe Adventures, Steve's Gardening, Kona Deep, the event's officers, directors, members, volunteers, sponsors, agents, successors, assigns or anyone acting on their behalf from any and all claims of liability for death, personal injury, or property damage of any kind or nature whatsoever arising out of or in the course of my participation in this event. I understand that dangerous marine life reside in the waters around the North Shore & the possibility of interaction with these animals is possible. I attest I am physically fit and have sufficiently trained to participate in this event and I consent to receive medical treatment which maybe advisable in the event of illness or injury during the event. I grant permission for organizers for free use of my name, voice or picture in legitimate accounts and promotions of this event whether it be in print, television, media or the Internet. I acknowledge that the organizers of the North Shore Swim Series reserve the right to refuse entry to anyone for any reason. I acknowledge that there are no refunds for the North Shore Swim Series. I agree to exit the water if I am instructed to do so by Water Patrol if it is deemed I am not making progress.

Signature _____ Date _____

I have read and understand the waiver above

Parent's signature if entrant is under 18 years of age _____ Date _____