



"E Ala Na Moku Kai Liloloa"

Remembering 9-11

A Remembrance service for lives lost on the September 11 tragedy will be held at the Turtle Bay Resort Bayview Beach on Sunday, September 11, 2011, at 9:11 a.m.

See page Page 11



NORTH SHORE NEWS September 7, 2011 VOLUME 28, NUMBER 18



Turtle Bay Resort, LLC has a Revised Master Plan

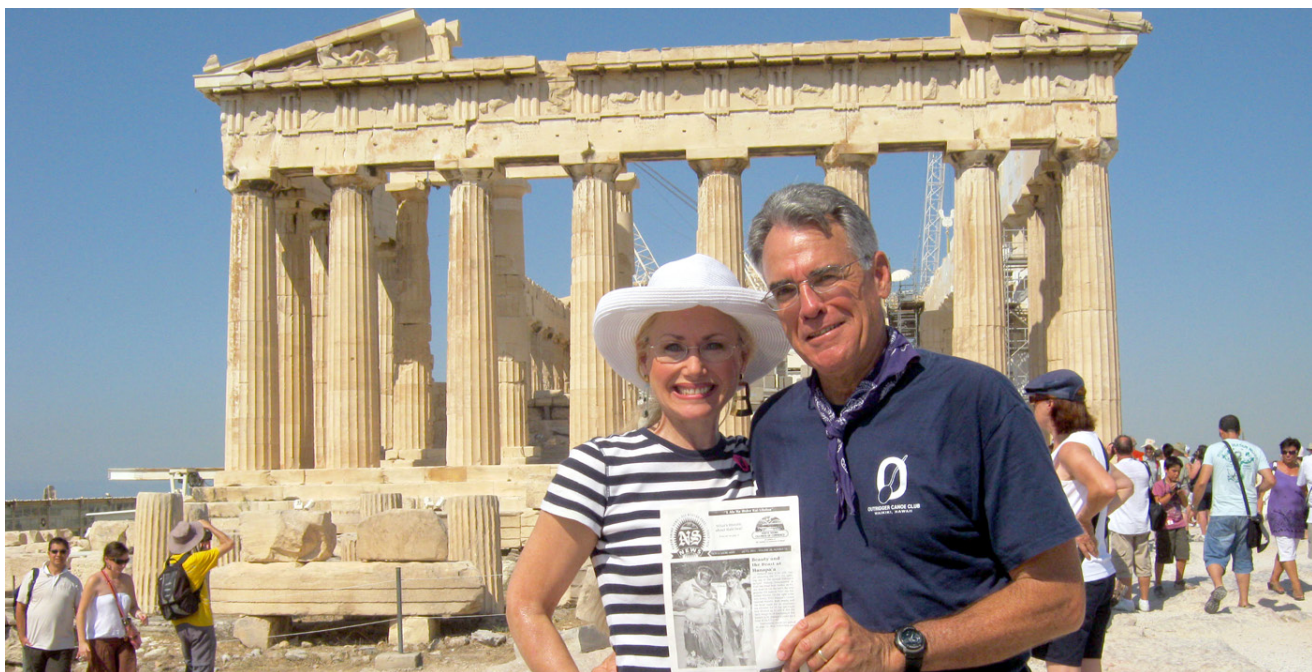
After listening to the community in small talk sessions and public meetings for over a year Turtle Bay Resort spokesman Drew Stotesbury recently stated that re-

sort owners now have a greater understanding of the community's concerns and vision for Turtle Bay Resort's expansion. Their new Revised Master Plan substantially

reduces the original scope of the project but opposition groups say its still too big. An informational meeting is scheduled for September 15, 2011 at 7 p.m. at Turtle Bay Resort. See story on page 14.

PRE-SORTED STANDARD U.S. POSTAGE PAID Honolulu, Hawaii Permit No. 1479	66-437 Kamehameha Hwy., Suite 210 Hale'iwa, HI 96712
--	---

PROUDLY PUBLISHED IN
Hale'iwa, Hawai'i
*The Surfing
 Capital of the World!*



OFF da Island in Greece

Part-time Laie residents Michael & Cindy Lilly enjoyed a nice summer excursion on an Eastern Mediterranean cruise. They traveled from Venice back to Venice with stops in Athens, Istanbul, Ephesus, the Greek Isles of Mykonos and Santorini, and Olympia Greece where the first Olympic games were held some 2700 years ago. They are posing in front of the ancient Parthenon in Greece, dedicated to the Greek goddess Athena, whom the people of Athens considered their patron. When on-board ship cruising from ports of call, they would relax reading a recent copy of the NSN to remind them of the good times back Oahu's beautiful North Shore. To learn more about our OFF da Island photo campaign turn to page 23.



Subscribe to the North Shore News

The North Shore News is delivered free to residents in Mokuleia, Waialua, Haleiwa, Kawaiolo, Waimea, Pupukea, Sunset, Kawela, Kahuku, and Laie. A subscription is available for other cities on Oahu, Outer Islands, or Mainland U.S. or Alaska for just \$27.00 per year for 25 issues for delivery by standard bulk mail (2-3 weeks Mainland) or \$48 delivered by 1st class postage (3-5 days). You may subscribe by using check, money order or credit card (VISA, MC, AMX).

Mail North Shore News to:

Recipient _____

Address _____

City _____

Credit Card # _____

Expiration _____

Return this form with payment to:
 North Shore News
 66-437 Kam. Hwy. #210
 Haleiwa, HI 96712

CLIP



Cholo's Homestyle Mexican Restaurant & Margarita Bar



Island Fresh Fish Tacos

Dine-In Take-Out Burritos • Quesadillas • Nachos
 Enchiladas • Fajitas

637-3059

OPEN EVERY DAY
 10:30 a.m.-9:30 p.m.



"Hawaii's Best Little Mexican Restaurant"

All Major Credit Cards Accepted
 Located in the North Shore Marketplace
 66250 Kamehameha Highway Haleiwa, Hawaii 96712



October 7th & 8th, 2011

Turtle Bay Resort SEAFOOD FESTIVAL

Don't miss Turtle Bay Resort's seventh annual Seafood Festival, "Celebrating Hawaii's Seafood."

**DON'T WAIT UNTIL THE LAST MINUTE.
BOOK YOUR ROOM NOW-- BEFORE THEY
SELL OUT! Call 293-6000.**

Friday, October 7th

TASTE of the NORTH SHORE SHRIMP TRUCKS

This year's event will begin with the ever-popular Shrimp Truck cook-off! Gather for a sample of these Shrimp Truck's best recipes, Hawaii microbrews & live entertainment.

6:30 pm-9:00 pm
Kuilima Point (\$40)



TURTLE BAY RESORT SEAFOOD FESTIVAL

Friday & Saturday, October 7th & 8th



Saturday, October 8th

SAM CHOY POKE CONTEST

Celebrate Hawaii's unique fresh fish dish with a Poke Contest, tastings, and the always fun Sam Choy Poke Challenge. DO YOU MAKE GREAT POKE? Compete in the Sam Choy Poke Contest! Download and submit contest forms from www.TurtleBayResort.com/Seafood

2:30 pm-4:00 pm
Kahuku Ballroom (\$25)



Turtle Bay Resort
true hawai'i

Saturday, October 8th

CHEF'S SEAFOOD under the stars

Consider Saturday evening's "Chefs" event as the grand finale of the Seafood Festival featuring multiple action stations, wine tasting, ice cold beers and live entertainment.

6:30 pm-9:00 pm
Kuilima Point (\$55)



www.TurtleBayResort.com/Seafood

The Hale'iwa Family Dental Center, Ltd.



presents

"Comfort Dentistry"

including—

- Relaxation Glasses
- Television Glasses
- Caring Staff
- Special Medication to help you relax
- Laser Cavity Detection
- New Patients Welcome!

Your teeth are much too important to neglect.

Call: 637-9652
for your reservation

We're conveniently located behind First Hawaiian Bank
in the heart of Hale'iwa.

Editor's Choice

To pee or not to pee

(Author Unknown)

To Pee or Not To Pee

I have a job.

I work, they pay me.

I pay my taxes & the government distributes my taxes as it sees fit.

In order to get that paycheck, in my case, I am required to pass a random urine test (with which I have no problem).

What I do have a problem with is the distribution of my taxes to people who don't have to pass a urine test.

So, here is my question:

Shouldn't one have to pass a urine test to get a welfare check because I have to pass one to earn it for them?

Please understand, I have no problem with helping people get back on their feet. I do, on the other hand, have a problem with helping someone sitting on their BUTT ----doing drugs while I work.

Can you imagine how much money each state would save if people had to pass a urine test to get a public assistance check?

I guess we could call the program "URINE OR YOU'RE OUT"!

Something has to change in this country - AND SOON!

P.S. Just a thought, all politicians should have to pass a urine test too!

Quality Tile Crafts

"No job too big or small!"

Specializing in Ceramic Tile,
Travertine, Marble, & Slate

Kevin Wilson

cell (808) 864-4985 office (808) 638-8492

www.QualityTileCrafts.com Free Est.

BREAKFAST

7 AM to 11 AM DAILY



Haleiwa Shopping Plaza - 637-5095

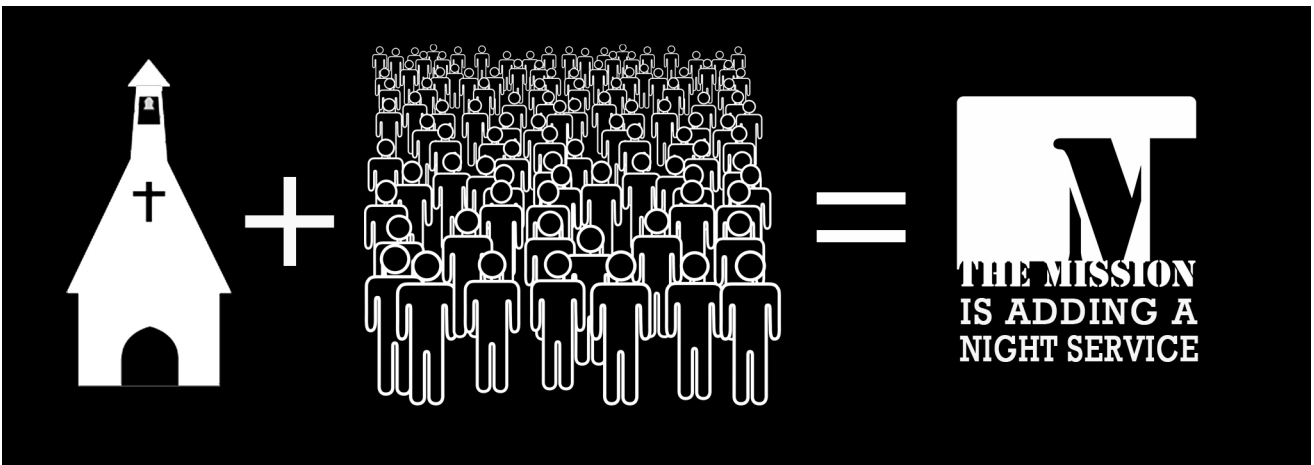
PLUS \$2.00 Off with this Coupon

Some Restrictions Apply. See Restaurant for Details.
When Ordering Regular Priced Items. Good Anytime. One Coupon Per Person.
Can Not Be Combined with Other Discounts. Expires 10/31/2011.

OCTOBER IS . . .

**Pastor's
Appreciation
Month**


It's an opportunity for the sheep to
give back to the shepherd.



WE HAVE ONLY BEEN UP AND RUNNING FOR A YEAR, BUT GOD HAS SO BLESSED OUR LITTLE CHURCH DOWN HERE AT SUNSET THAT WE ARE FULL AND STILL GROWING.

STARTING SUNDAY SEPT. 25TH, WE WILL BE GOING TO 2 SERVICES:
 9 AM - includes childrens ministry
 7 PM - refreshments beforehand
 SUNSET BEACH ELEMENTARY CAFETERIA

 themissionnorthshore.org  



Polynesian Treasures

Hawaii's largest selection of Polynesian handicrafts and Hawaiian inspired gifts.


North Shore Marketplace • Haleiwa, Hawaii
 Open daily from 10 a.m. • 808-637-1288

KUA AINA



The Best!
 IN HALEIWA
637-6067
 NOW IN HONOLULU
591-9133
 AT WARD VILLAGE SHOPS


HALEIWA • TOKYO • HONOLULU




WONDERFUL PKB

We need your help to make PKB Da Best bakery on the North Shore!
 "Da Best"

CUT OUT THIS AD & WRITE IN YOUR SUGGESTIONS

**How can we improve PKB?
 Please write your suggestions below:** 

BRING IN YOUR SUGGESTION BY SEPT. 30, 2011 AND GET 15% OFF YOUR ENTIRE PURCHASE... WHEN YOU DROP IT OFF

SUGGESTIONS WELCOME 

Offer valid until September 30, 2011. One discount per person. Offer is not valid with other promotions or discounts.

Olakino Maika'i

(Good Health)

by Naty Camit Hopewell

PPD

PPD is the test that schools and businesses require before entrance or employment to ensure that you don't have active tuberculosis. A small amount of "Purified Protein Derivative" (PPD) is injected right under the skin and a "bubble" is created. You are asked to return in 48-72 hours for the reading. If you have a 10 mm. (slightly less than ½ inch) or more of redness and swelling at the site of administration, this is a positive reading.

What does this mean? It means you have been exposed to the bacteria causing tuberculosis (TB). The bacteria can stay in your body for many years and may cause tuberculosis at any point in time. Consequently, a chest X-ray is ordered to rule out active TB. Your chest X-ray will most likely be normal. However, to prevent the TB bacteria from causing the disease, Isoniazid (INH), a medication to prevent TB, is frequently used. INH is a 300 mg. tablet that you take daily for 9 months. It should be taken 1-2 hours before meals or antacids. Most people do not have side effects from INH. The potential side effects are nausea and numbness or tingling in the hands or feet. The numbness/tingling can be prevented by taking vitamin B6 25-50 mg. daily. The most serious side effect is hepatitis (inflammation of the liver). The signs and symptoms of hepatitis include loss of appetite, yellowish skin or eyes, dark urine, fatigue, abdominal pain or unexplained fever. If you develop these symptoms, stop taking INH and call your medical provider.

Is it necessary to take INH? Approximately 10-20% of people with a recent exposure (within 2 years) will develop active disease over their lifetime. The risk is highest the first few years after initial exposure.

Remember, once you have a positive PPD, do not get another one. Once positive, it will always be positive.

Hawaii JROTC Cadets display great honor as they Keep the Spirit of '45 alive

On August 13, 2011 over 62 JROTC cadets from five high schools across Hawaii came together at the Waikiki Shell to be part of "Keeping the Spirit of 1945 Alive." This was the first time Cadets from area high schools participated in this event, but for many, it was a life changing experience. These cadets are the future of America, and it showed in their performance of carrying each of the States' flag, and the historical timeline of "Old Glory" with the "Flags of Liberty", as it transformed from the original 13 stars, to the last flag of the 50th State, Hawaii.

Cadets learned first hand how our country came together during WWII to preserve the legacy of the men and women of the Greatest Generation. They learned that these men and women were of tremendous courage, self-sacrifice, and a "can-do" attitude and commitment to this country, that failure was not an option. The goal of this annual day of remembrance and national renewal to remind Americans of the values and accomplishments of the generation who endured the hard times of the Great Depression, fought to defeat the greatest tyranny in history, and then went on to rebuild their shattered world in an unprecedented effort to help assure a better future for all mankind.

"These performances on stage were awesome, especially getting a chance to meet Lee Greenwood backstage after the concert, stated Cadet Lieutenant Taylor Cook, Kahuku High School. Shari Lynn & The Del Courtney Band, the 111th Army Band, and THE FLAGS OF LIBERTY with a special Salute to the 442nd were all part of the show. Cadets had an opportunity after the "Flags of Liberty" to go into the seating area to watch and see an incredible performance of Lee Greenwood performing his signature songs with his final song GOD BLESS THE USA.





FOR YOUTH DEVELOPMENT
FOR HEALTHY LIVING
FOR SOCIAL RESPONSIBILITY

YMCA CAMP ERDMAN FALL EVENTS

OCTOBER 02-07
SCHOOL BREAK CAMP
TRADITIONAL / HORSE / SURF

Our Fall Break Camp is filled with activities that will create positive lifetime memories. Our commitment is to provide an environment where the YMCA core values are prevalent in all we do, which help us create a safe environment for your child to stretch their boundaries and truly grow.

YMCA CAMP ERDMAN
69-385 Farrington Hwy., Waiialua, HI 96791
P 808 637 4615 W www.camperdman.net

OCTOBER 28-30
FAMILY CAMP
HALLOWEEN THEMED WEEKEND

YMCA Camp Erdman Family Camp is a great way to spend uninterrupted time together while creating valuable memories all in a safe and fun environment. Participate in various activities that are available for all ages. Enjoy the events and a range of themes for each Family Camp weekend.



SAVE THIS DATE!!!

Saturday, October 15, 2011
9:00 a.m. to 2:00 p.m.

**HALEIWA JODO MISSION'S ANNUAL
CRAFT FAIR**

66-279A Haleiwa Road

* Interested in selling your crafts? Please call 637-4382 or write to *
* haleiwaodmissionyba@gmail.com for more information. *

PKB 5-0 SEPTEMBER SPECIAL

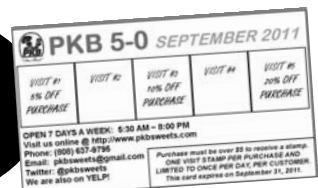


"Da Best"

1. VISIT PKB
2. ASK FOR THE PKB 5-0 CARD
3. GET A STAMP WITH EACH VISIT
3. GET 5% OFF YOUR 1ST VISIT
3. GET 10% OFF YOUR 3RD VISIT
4. GET 20% OFF YOUR 5TH VISIT

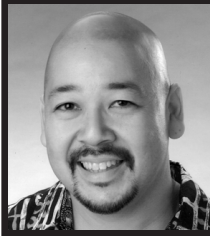
PURCHASE MUST BE OVER \$5 TO RECEIVE A STAMP. ONE VISIT STAMP PER PURCHASE AND LIMITED TO ONCE PER DAY, PER CUSTOMER.

**COME IN &
GET YOUR
PKB 5-0
CARD TODAY!**



Offer valid until September 30, 2011. One discount per person. Offer is not valid with other promotions or discounts.

wanna learn?
NORTH SHORE
JIU-JITSU CLUB
try it out free!
men-women-kids
NorthShoreBJJ@GMail.com



Council Chair
Ernie Martin
Serving You in District 2

Kaiaka Bay Beach Park:

A Tribute to Bill and Peggy Paty

For many years prior to World War II, the parcel now known as Kaiaka Bay Beach Park was owned by Bishop Estate and leased to Palama Settlement. Used for recreational activities, the area was called the Palama Fresh Air Camp. It was also used as a summer camp by the Aloha Council of the Boy Scouts of America. A number of scouts earned their Eagle Scout badge there, including the oldest Eagle Scout in the Aloha Council, Waialua's own Bill Paty, who earned his badge in 1934. When the tsunami of April 1, 1946 washed away the cabins and dining facility, Palama chose not to renew the lease. The land was then used by small farmers and the occasional camper. In 1974, local developer Herbert Horita offered to buy the Kaiaka parcel from Bishop Estate with the intention of building a condominium complex and golf course on the beach front parcel. The community rose in opposition to the idea and several community leaders dedicated themselves to raise the market price of \$1.3 million dollars to purchase the land from Bishop Estate. Bill's wife and Girl Scout Troop leader Peggy Paty was at the forefront of this effort that also included civil engineer Fred Gross and legislative liaison Tommy Lee of Waialua Sugar Company. Representative Ollie Lunasco of Waialua took the request for funding to the Legislature where it was met with strong resis-

tance from other lawmakers. With the assistance of then Senator D.G. Andy Anderson, the money was appropriated by the State legislature and signed into law by Governor George Ariyoshi. Kaiaka Bay Beach Park became the first ocean park to be acquired and developed by the State. Under the authority of an Executive Order in 1979, the City was granted custody of the park until ownership was officially transferred to the City in 1992. On August 17th, the City Council passed a resolution to rename a portion of Kaiaka Beach Park, bestowing upon Bill and Peggy Paty a well-deserved recognition of their perseverance and their vision. The Bill and Peggy Paty Kaiaka Bay Beach Park is more than a tribute to the Patys; it is also a sincere mahalo from the entire community to two people who have given so much of themselves to their beloved North Shore.



Council Chair Ernie Martin & Bill Paty.



Senator Carol Fukunaga, Former Representative Mike Magaoay, Councilmember Ann Kobayashi, Honoree Bill Paty, his son Steve Paty, Romy Cachola, Senator Clayton Hee and Councilmember Ikaika Anderson in the Council Chambers on August 17th.

You work hard to take care of your teen...

and now there is help!
Many teens can get FREE health insurance.

For more information about free QUEST or
QExA health insurance for your teen

CALL 211

free phone call from all islands



Hawaii Covering Kids
Advocating Health Insurance for All Keiki and 'Opio

www.coveringkids.com/community



The Salvation Army Family Store
- Wahiawa store only

All clothing 50% off
every day and
\$.99 clothing specials
on Fridays
open Mon-Sat 9am-6pm
subject to change



For more information contact:

Fred Deisser at 808-522-8425
Located at 322 Sumner St., Honolulu 96797
Across from K-Mart in town

North Shore Food Bank

You can help feed the North Shore's homeless & hungry by donating non-perishable canned foods to the North Shore Food Bank located in the North Shore News Office above the Hale'iwa Post Office.

637-3138

Prefer to contribute financially?

Check can be made out to:
Once A Month Church
P.O. Box 117, Hale'iwa, HI 96712

- TOP 5 MOST NEEDED ITEMS**
- Financial Contributions
 - Canned meats or tuna
 - Canned meats & soups
 - Canned vegetables & fruits
 - Canned beans

No donation is too small.

501c3 non-profit

IT'S AN EXCITING TIME TO BUY!

LOW Interest Rates=More Home for your \$\$
Kuilima/Turtle Bay Estates Lease Fees Now Available Starting around \$20,000!

*based on studio lease fee price available for a limited time Buy the Fee NOW

Own a Piece of Paradise in Fee Simple

for as low as \$257,000* or LESS...

*based on unit #5/42 1bed/1bath +loft /1pkg. Sold for \$206,000 LH plus lease fee price quoted at \$51K for limited time.

Gorgeous Resort Property, Walk to the Beaches, Surf, Play Golf & Tennis, Enjoy Casual & Fine dining, & much more..

Call us for a FREE, Confidential, NO-Obligation Pre-Qualification

Receive FREE Email Updates on New listings for Sale



Diana Novoselic (RA)

Prudential Locations LLC

Cell: (808) 386-2126

Diana.Novoselic@PruHawaii.com

www.pruhawaii.com

Top 2% of Prudential Agents Nationwide



Scott R. Brewer

President, Hawaiian Isle Mortgage, Inc.

Cell: (808) 554-6821

NMLS # 320664

Phone: (808) 550-0862

NMLO # 320702

Fax: (808) 792-9001

brewerscott@yahoo.com

www.hawaiianislemortgage.com



**A Message From
State Representative
Gil Riviere**

Get Ready North Shore!

Are you prepared for disaster?

Experts from the Pacific Tsunami Warning Center, State Civil Defense, City Disaster Emergency Management and other agencies will discuss potential life threatening events and how we can prepare and survive after such an event.

What: Disaster Preparedness Meeting

Where: Sunset Beach Elementary School Cafeteria

When: Tuesday, September 13, 2011

Time: 7:00 p.m. – 8:30 p.m.

The meeting is sponsored by the North Shore Disaster Preparedness Steering Committee and my office. For more information on the work being done by the steering committee, visit the website at www.nsdasterplan.org

Another important resource is Nixle, a text and email warnings notification system that sends alerts regarding tsunamis, flooding, and other emer-

gency information. Registration is FREE at www.Nixle.com or text your zip code to 888777 for SMS notifications. Text messaging charges apply. Congratulations to Ms. Stephany Vaioleti, the new Administrator at Kahuku Medical Center! She is a great asset for the hospital and for the North Shore and Koolauloa communities.

**Lack of Public Involvement Slows Laniakea
Traffic Project**

The first meeting of the Laniakea Traffic Alternatives Study working group has been delayed due to a lack of volunteers. Surprising as this seems, as upset as we are every time we get stuck in the gridlock, only a handful of people have volunteered to participate in the Project Task Force that will play a critical role in the study and recommendations that follow. Over the weekend, I was informed that the first Task Force Meeting will be held in September, provided enough residents and assorted stakeholders step forward.

As always, feel free to share your thoughts and concerns by calling me at 586-6380 or at gilriviere.info.

GOT BOOKS?

Summer Cleaning

While you are doing your summer cleaning why not donate your new and gently used books to Once A Month Church. Your donation of books (fiction & non-fiction), magazines like National Geographic, and monetary donations will support our free lending library for homeless and low-income families.

Bring your donation to the
North Shore News Office
located above the Haleiwa Post Office,
2nd Floor, Suite 210.

637-3138

DRAFTPLANS HAWAII

- Over 10,000 floor plans & blueprints available for purchase online. Gather ideas for your own design.
- Drafting Service available for new home designs, additions, renovations, decks, fence, rock walls, etc.
- Free property specifications & title search info.



www.draftplans.com

Call for free estimates:
265-0035



**We Pay You
\$100
CASH & FREE
TOWING
for unwanted vehicles
(complete)
636-7183
North Side Towing**

*Oceanside Chapel Service
at Turtle Bay Resort*



Every Sunday at 9 a.m. in the beautiful oceanside wedding pavilion.

Hosted by Pastor Ron Valenciana

- Non-denominational 45 min. service
- Traditional & Contemporary music
 - 15 minute sermon
- Free gift to all first-time visitors
- All are welcome! Free validated parking

For more information call Pastor Ron at 342-3969.

*When church is pau, enjoy dining at the Palm Terrace, Hang Ten Pool Bar, or Lei Leis.



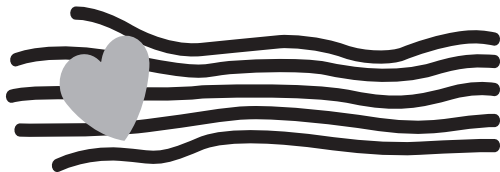
911
Memorial Service

Turtle Bay Resort
Sunday, September 11

9:11am

Bayview Beach
(in front of Ola restaurant)
a short 10 minute memorial

45 minute religious service
to follow in the wedding pavilion,
hosted by Pastor Ron Valenciana



give aloha

Foodland's Annual Community Matching Gifts Program

Make a donation to our organization at any Foodland or Sack N Save checkout, and Foodland and the Western Union Foundation will make a donation to our organization, too!

Our Organization Code is 78488

HOW TO HELP:

- 1) Show your Maika'i Card and make a donation to our organization (up to \$249 per person) at any Foodland or Sack N Save checkout from September 1-30, 2011.
- 2) Foodland and the Western Union Foundation will match all donations up to a total of \$325,000 for all organizations combined.

THANK YOU FOR YOUR SUPPORT!





**Direct From
Donovan
State Senator
Donovan Dela Cruz**

With the recent occurrences of earthquakes in various parts of the world – the catastrophic occurrence in Japan and more recently on the East Coast and California - are we prepared should one hit us here in Hawaii? Most of us are aware of hurricanes that may hit us and we have received various information on how we can be prepared should we experience one.

Although we have been subjected to earthquakes, fortunately, they were not of the magnitude to cause a great amount of damage or potential harm to people. However, as we have seen, earthquakes can occur unexpectedly in places where the ordinary citizen may not have anticipated and could possibly be severe causing considerable damage.

Perhaps we haven't given much thought to what we would do should a catastrophic earthquake happen to us. Recently, I came across some information on how to be prepared in the event of an earthquake that may destroy homes, buildings and essential services. The following is some helpful advice:

Everyone should prepare a 72-hour survival kit that provides essentials to sustain life. A backpack is ideal in the event you have to evacuate your home, and it should be kept in a place that is easily accessible and will not get lost in the usual clutter of homes.

If you are able to obtain them, MREs (meals ready to eat that soldiers carry with them) are ideal if electricity is lost. They can be purchased online and will last up to two years. Other food items are protein bars, granola bars, and trail mix.

A gallon of water per person is recommended. If you do not have bottled water, get water purification tablets or a filter which will allow you to purify water if needed.

Have a change of clothing, a rain poncho and emergency blanket.

Some other essentials are flashlight, batteries, 100-hour candle and waterproof matches.

Some old school technology is useful in times of natural disasters such as a radio that runs on batteries or solar radio as a radio will at least provide some information about what is going on. You should also have some way to charge your cell phone, such as a solar charger, if you are able to obtain one, and should be kept in your kit.

You may also want to have essential toiletries, first-aid supplies and ibuprofen, acetaminophen and allergy medication if anyone in the household suffers from allergies.

It is good to keep prescription medications within easily reachable locations should you have to evacuate in a hurry.

Also keep your essential documents such as birth/marriage certificates, passports, credit cards, social security cards, drivers licenses, insurance documents where you can get to them quickly.

Periodically, you should check for expiration dates on documents and medication.

You have nothing to lose by being prepared but everything to lose if you are not prepared. It will also give some comfort knowing that you are prepared should a catastrophic occurrence happen.

September Events at Kahuku Library

Kahuku Public & School Library will offer "Tuesday Night at the Library" events and other programs in September 2011. All events and programs will be conducted in the Conference Room and are suitable for ages 12 and older, unless otherwise noted. Admission is free:

September 12, 11 a.m. - "Humehume of Kauai: A Boy's Journey to America, an Alii's Return Home." Adults are invited to meet author Douglas Warne at the Kahuku Book Club meeting for a discussion on his book "Humehume of Kauai." Prince Humehume was the first son of Kaumualii, the last great Hawaiian chief of Kauai and Niihau. Humehume was four years old when his parents enlisted the help of a Sea Captain to take him abroad for an education. When he returns home as a young man and Prince, Humehume discovers much has changed on Kauai.

September 13, 6:30 p.m., Main Reading Room - "Plantation Life: Kahuku in the 50s and 60s." Angel Ramos, renowned "Hawaiian National Treasure" and gardener, came to Hawaii to work on the sugar plantation in 1946. Ramos will share a collection of stories, photos and memorabilia to illustrate that special period in Kahuku. This program is suitable for all ages.

September 20, 6:30 p.m. - "Ekolu Eha Ike Pono School Readiness Project: An Overview." This program is provided by Aloha United Way and offers children ages 2 - 5, accompanied by a parent or caregiver, a free screening for school readiness.

The screening will focus on vision, hearing, social/emotional needs, and developmental progress. Early detection and treatment can prevent learning problems that may affect school performance.

After School Club - meets Wednesdays at 1 p.m.
Keiki Story Time - meets Thursdays at 10 a.m.

2011 North Shore Menehune Update Part 2

by Skill Johnson / Co-Director

The surf is up and the contests are near. All are invited to Haleiwa's Alii Beach Park for the 35th Menehune Surfing Championships on Oct. 15, 16, 22, 23! This event is for kidz 12 and under. Boys and Girls. Short board and longboard! The event lasts three days and will be held in the best conditions on any given day!

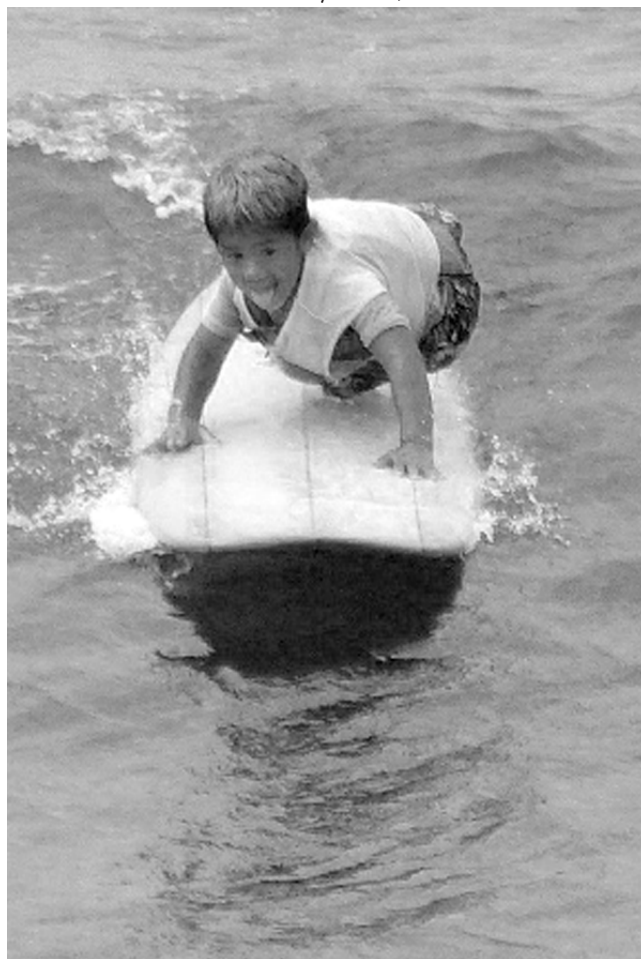
Come on down and join in on the FUN!

The entries are available at all surf shops with Menehune Headquarters at SURF-n-SEA. This is the official drop off for entries. The DEADLINE has been moved up this year so please take note: Mail-in entries should be sent early; use a money order so proof is in hand that an entry was submitted. Get your entry in early! First come/ First serve! They must be in on time. Enter during the month of September !!! And remember, NO Beach Entries and NO LATE ENTRIES!!!

If you'd like to donate to the prize pool, contact: Co-Director, Ivy Blomfield at 808-778-3477! Ivy and her crew put a tremendous amount of effort organizing this Menehune event! Please submit all inquiries early... it's a BIG help! Prizes will be given out to all finalist and in the drawing which is for everyone in the event! There are 10 divisions plus the KOKUA division for keiki that need help in the water catching waves! The Kokua division is for ages 4 – 6 years old! When filling out the entry, check one division only; the 4 – 6 year olds are – KOKUA (kidz need help division) and the SHORTBOARD (no help in the water division)... DO NOT CHECK both divisions! Mahalo!

All surfers will get lunch, goodie bag and tee shirt. So come on down! See you at the beach!

Check out the Menehune website at: (north-



shoremenehunesurfcontest.com)

This is a great venue to give back to the community. Don't miss the next issue of the North Shore News coming out on Sept. 21st.



Annie is headed back to Africa

Sunset Beach resident Annie Gerstenburger is concerned about Africa's "drinking problem." But it's not what you might think. We're not talking alcohol abuse, we're talking about access to fresh clean drinking water. Many village residents in Africa must walk for miles every day to get fresh water. Her passion is to build fresh water wells yards from villagers live instead of miles. Annie is planning her fourth water well mission trip later this month leaving on September 27 and returning on October 28, 2011.

She is traveling to Thyolo, which is south of Malawi about a 5-6 hours drive from the airport in Lilongwe. The last people that received a new water well on Annie's last mission is Mwittele village which is in Makombe district.

If you would like to support Annie's next mission to build another new water well in Africa you can send your tax deductible donation c/o Once A Month Church, P.O. Box 117, Hale'iwa, HI 96712. You will receive a donation receipt from the nonprofit 501c3 organization. Designate your donation to Annie's Africa water mission. For more information call Pastor Ron Valenciana at 808-342-3969.

Turtle Bay Resort announces EIS intent, and resort plan adjustment

After a year of listening to the community and the various stakeholders, Replay Resorts, the owners' representative for Turtle Bay Resort (TBR) formally announced its intent to prepare a supplemental environmental impact statement (SEIS) on Aug. 23, 2011 and the public has the opportunity to comment for 30 days, through Sept. 22, 2011.

"Updating the EIS is absolutely the right thing to do, as we appreciate that many changes have occurred, and it is an important positive response to public sentiment." said the owner's representative, Drew Stotesbury, of Replay Resorts. "We are benefiting from input from a broad cross-section of the Ko'olau Loa and North Shore community as we work together to formulate our future plans. We had over 140 meetings with individuals and groups leading up to this point, a new plan for the resort."

The SEIS will include updates from the original environmental impact statement for the resort's planned expansion, which was approved in 1985."

The new resort plan was developed with great respect for both the community and the native Hawaiian culture, integrating the traditional Hawaiian Ahupua'a land planning principles into the Master Plan for over 1,300 acres of total land holdings both

mauka and makai of Kamehameha Highway, Turtle Bay Resort. The existing hotel occupies only 34 acres.

In fact, in response to community input, over 75 percent of the total land holdings will remain open space – including 469 acres mauka of Kamehameha Highway that have been proposed as a conservation easement in coordination with the Trust for Public Lands and the North Shore Community Land Trust. This initiative will preserve important agricultural land forever, and is one of many conservation efforts to be outlined in the resort master plan. Farmers currently working pieces of land on a month-to-month basis will benefit from dedicated agricultural land and the opportunity to provide their goods to the resort – a farm to table movement – to be enjoyed by residents and visitors alike.

Other studies that are being undertaken include a Cultural Impact Assessment and a Supplemental Archeological inventory survey. The resort owners are also working to identify, and talk story with, cultural and lineal descendants of the area. Of great interest to the North Shore, a Traffic Impact Analysis Update is also being conducted as a part of the SEIS

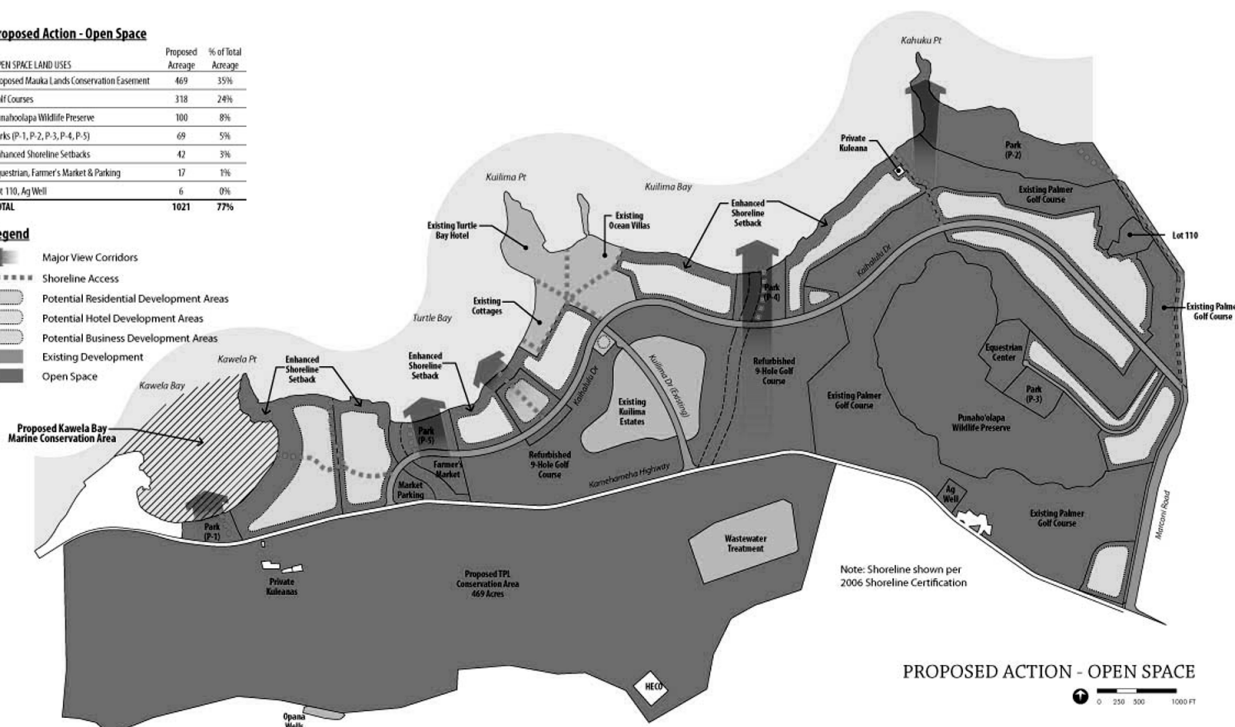
Continued on page 15

Proposed Action - Open Space

OPEN SPACE LAND USES	Proposed Acreage	% of Total Acreage
Proposed Maui Lands Conservation Easement	469	35%
Golf Courses	318	24%
Punalohua Wildlife Preserve	100	8%
Parks (P-1, P-2, P-3, P-4, P-5)	69	5%
Enhanced Shoreline Setbacks	42	3%
Equestrian, Farmer's Market & Parking	17	1%
Lot 110, Ag Well	6	0%
TOTAL	1021	77%

Legend

- Major View Corridors
- Shoreline Access
- Potential Residential Development Areas
- Potential Hotel Development Areas
- Potential Business Development Areas
- Existing Development
- Open Space



PROPOSED ACTION - OPEN SPACE



2011 Triple Crown of Surfing Program Guide

- Official full-color local magazine •

Call today for best ad location

Ad deadline is Sept. 30

Reserve your ad space early!

- Hawaiian Pro
- World Cup
- Pipeline Masters

Published by North Shore News

342-3969



Turtle Bay Resort announces continued from page 14

and that work is being done per the requirements of the Hawai'i State Department of Transportation. Traffic studies are executed approximately every other year, but are not open to the public whereas this study will be a part of the public SEIS process. Getting the data out in the open will help confirm the issues and opportunities.

Overall, the Preferred Plan proposes over 60% less density than what TBR is legally entitled to build. For example, zoning allows for 2,500 hotel units on five sites. TBR is proposing 625 on two sites. On the other hand, the plan would require TBR to provide 59 affordable community housing units and 160 are in the plan. Overall, total unit counts are down from 3,500 to 1,375.

Improvements to the resort will also include tangible community amenities such as new cultural and entertainment experiences, day care, enhanced public shoreline access, and a permanent farmer's market location. Five new parks and eight separate shoreline access points are included in the new plan. The beloved Kawela Bay also will be restored to its natural beauty, as the new plan includes rerouting Kawela Stream to its original location, Turtle Bay. Currently, the stream dumps sediment into Kawela Bay which affects the health and the clarity of the

bay.

"The SEIS and all studies being conducted in conjunction with it are critical to the process of finalizing the resort master plan," stated Stotesbury. "Without concrete research and scientific data, it is impossible to truly understand the impact of any changes or improvements to the resort area. Having this information is the only way we will be able to properly address community concerns and mitigate negative impact."

To ensure that all plans are as inclusive and transparent as possible, a website – [www.Turtle Bay-SEIS.com](http://www.TurtleBay-SEIS.com) – has been launched, providing timely updates about the resort master planning, the SEIS process and an opportunity to comment.

The target date for the publication of the draft SEIS is early 2012, at which time another comment period of 45 days will occur. The final SEIS will be completed in mid-2012. Ultimately, the SEIS must be approved by the City and County of Honolulu's Department of Planning and Permitting (DPP).

In its ongoing commitment to community engagement, Turtle Bay Resort will hold a public open house and presentation at the resort on Thursday, Sept. 15th, to provide more information and dialogue with the community.



The student Kahuku Film Club received a \$1000 donation from Western Film Company, LLC (From left) Kahuku Film students: Tanner Taipin, Chelsea Rhodes-Nakahara, Eddie Galiza, Mark Kahuena, Shamrock Gohier, film executives: Jess Cole & Mary Courtney, students: Nadia Fale, Mahina Alexander, Sharis Alaiasa, Justin (Pono) Elmore, Aaron Kroff, Dakota Kephart, Kahuku High & Intermediate School's Digital Media teacher: Debra Barenaba. Photo by Kahuku student photographer: Sioeli Lavulavu.

Kahuku Film Club receives \$1000 donation & film tips

The Kahuku Film Club's second year got off to an exciting start. Two film executives: Production Manager, Mary Courtney and Production Coordinator, Jess Cole visited Kahuku High & Intermediate School and were interviewed by their Digital Media class. The students set-up a TV talk show set, and interviewed and filmed the two film industry experts about their careers and the skills needed to work in the Film Industry.

On behalf of Western Film Company, Courtney and Cole also presented the students with a check for \$1000 for the nonprofit, Ko'olauloa Educational Alliance Corporation (KEAC) to support the Kahuku Film Club. (www.kahukufilmclub.com)

"Digital media is bringing the world to our kids in meaningful impactful ways," said Debra Barenaba, Digital Media teacher at Kahuku High and Intermediate School.

The Kahuku digital media class mimicked a TV production team with three interviewers, two camera men, a writing team, stage manager, a director and producer assistant. "I was amazed at the high level that students interacted with both guests. Not only did the students produce the whole show, but their performances of on-camera hosting and questions were as good as Larry King or Oprah!" said Don Sand, the mentor for the Kahuku Film Club.

Cole, a Maui native spoke to the students about the opportunities for Hawaii's youth in the State's

growing Film & TV Industry. Courtney agreed and said that she, "loves working in the islands because the people on the crews are all hard working and kind and a pleasure to work with. There is a sense of camaraderie that makes working in Hawaii enjoyable."

Veteran producer Courtney was also, "very impressed with the kindness and enthusiasm of the (Kahuku High School) staff and the well mannered students intense interest in the film industry. I wish all of them the best of luck in pursuing and believing in their hopes and dreams." In turn, Sand was also, "extremely impressed to see such busy and successful Film Industry professionals Mary Courtney and Jess Cole take time from their day to talk to our students."

Western Film Company, LLC had been shooting for two days on the North Shore some brief scenes for an upcoming movie by the award-winning director, Paul Thomas Anderson. The 2-day shoot was at Papailoa Beach also known as Police Beach on the North Shore of Oahu. The production office was located at Turtle Bay Resort in Kahuku.

The Kahuku Film Club is continuing to look for Community support and funding to expand their program. To learn about the Kahuku Film Club's activities and to view their student's videos, visit: www.kahukufilmclub.com.

BULLETIN BOARD



Featuring the largest selection of certified organic produce on the North Shore.
 No panic...ours is organic.
 Open 7 days.
 Mon.-Sat. 9am-6pm.
 Sun. 9am-5pm

66-445 Kam. Hwy
 Haleiwa, Hawaii 96712
 Next to the Post Office
 808-637-6729 • 808-637-1922 fax



Robert Oakley Owner
 ASE Certified Master Mechanic Waialua, Hawaii
 Computer & Electrical Specialist (808) 330-0459

N-C PLUMBING & SUPPLY

Cont. Lic. No. C-8913



- RESIDENTIAL & COMMERCIAL SALES & SERVICE
- CONTRACTING & DESIGN • HOME PLUMBING SERVICE
- PLUMBING FIXTURES, HEATERS • FREE ESTIMATES

Nestor P. Calilao (Owner) Bus: 637-8662
 P.O. Box 769 Res: 638-5157
 Waialua, HI 96791 Cellular: 372-8718
 email: nncplumbing@hawaii.rr.com

BOW WOW BUNGALOWS

Licensed Boarding Kennel
 North Shore, Oahu

Reasonable Rates • Ph. 637-2562

These Dogs Have Fun!



Waialua Bakery

New Hours:
 Open Monday - Saturday
 10am - 5:00pm
 fresh sandwiches, smoothies, and baked goodies
 808-341-2838

Fresh Fruits and Greens supplied by:
Farmer and The Baker LLC
 808-341-1992

Paradise Lua

Parties • Special Events
 Anykine Private or
 Public Functions



"Portable Sanitation at its finest"

690-8116

Munden Design & Build

Lic.#BC19632

Design • Plans • Permits • Construction
 Additions & New Residences
 808 391-8616

Providing quality work since 1978



DR. PORTER TURNBULL

Chiropractic Orthopedist

(808) 638-8740

Appointments available Mon.-Sat.
(evenings by appointment)

- Industrial accidents & auto injuries
- Sports injuries • Spinal care
- Safe, Effective, and Gentle



"HONEST DEALS ON QUALITY CARS & TRUCKS"
 Established 1985

LINNE HOLMBERG

Owner

530 Paiea St.
 Honolulu, HI 96819

Lonestarmotorsportsllc.com

Honolulu: 834-0808
 Fax: 834-6602
 Cellular: 222-4272

LIC. #AC 18275



GENERAL ENGINEERING CONTRACTOR

Full Service Sitework
 Contractor

Septic Systems & Tanks
 25 yr. exp.

Michael Cowper 638-7200
 cowperhawaii.com



Usherettes Vera Williams, Folly Murdoch and Kerry Germain.

A glimpse behind the curtain into Hawaii's theatre history

By Asia Fujikake

The North Shore Chamber of Commerce's Historic Preservation Committee held its first in a series of historical illustrated lectures with a presentation on the theatres of Hawaii in the Historic Hale'iwa Gym last month. The event honored the families who owned and operated local theatres in Hale'iwa and Waialua contributing to the North Shore's rich theatre history. Lowell Angell, a celebrated historian and preservationist who authored the book *Theatres of Hawaii*, traced the rich history of Hawaii's theatrical venues with rare archival photographs and little known details. Captain Rick Rogers, who revealed himself as the legendary local superhero, "Captain Hale'iwa," followed with a discussion of the histories of the Eiraku, Hale'iwa, Kawaioloa, Koga and Waialua Theatres. He closed with a personal account of his impassioned efforts to prevent the unauthorized demolition of the Hale'iwa Theatre.

Guests were ushered through a draping red curtain by volunteers dressed in white with leis and red sashes, reminiscent of the historic Waikiki Theatre usherettes, and into the gym filled with the aroma of popping corn and the stirring sound of the pipe organ played by the legendary Johnny DeMello as captured on tape in 1963 at the Princess Theatre in Honolulu. In addition to popcorn, nostalgic theatre refreshments such as a rice candy, senbei, vintage candies and soda donated by the Waialua Soda Works were available to guests. The North Shore

Chamber of Commerce presented certificates of appreciation to the Koga family who owned and operated the Koga Theater, to the Matsuuras who managed the Hale'iwa Theatre from the fifties to 1978 and to the Waialua Sugar Company that built and operated the Waialua and the Kawaioloa Theatres for providing years of quality entertainment to the North Shore Community.

This event was made possible through the sponsorship of the Wallace Theaters Management Corporation.

The next lecture will feature John R.K. Clark's recently published book *Hawaiian Surfing, Traditions from the Past* and will be held on Friday November 4, 2011 at 7 p.m. in the Historic Hale'iwa Gym.



Old Hawaii Theatre.

BULLETIN BOARD

SUNSET AUTO SERVICE, INC.

- Auto air conditioning specialist
 - Auto engine maintenance
 - Safety inspection station
- Walking distance to Wahiawa DMV

Call for appointment
622-5510

Matt Verdadero
207 N. Cane St., #1 Wahiawa



PUT YOURSELF BACK ON YOUR LIST HAIR SPECIAL

Full Highlight and Cut \$100.00

GINA WALKER

Hairdresser to the stars
from Malibu, CA

Cut and Highlight Master

Now at North Shore Nails Salon & Spa
375-3984



Specializing in vegetarian foods, vegan foods, whole foods, organic food. Wheat free, dairy free, raw foods, gluten free. A complete selection of natural foods for 37 years. Make earth day, everyday.

Open 7 days.
Mon.-Sat. 9am-6pm.
Sun. 9am-5pm

66-445 Kam. Hwy
Haleiwa, Hawaii 96712
Next to the Post Office
808-637-6729 • 808-637-1922 fax



Haugan

Construction LLC
542-9269

- renovations • remodel • repairs
- termite repair • carports

Island Wide
Call Now, ask for Steve

"THE BULLETIN BOARD THAT IS IN EVERYONE'S HOME"

North Shore Agriculture Action Update

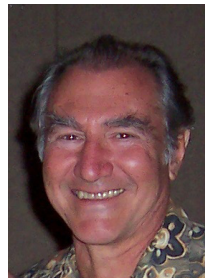
By Al Santoro

Welcome to our first of many articles on North Shore Agriculture. Much is happening in our Agriculture industry that does now or soon will affect North Shore farming and our community. In order to assess these events our NS Neighborhood Board has chartered an Agriculture Committee with Jacque Leinau as Chairperson. I am the Vice Chair and thanks to the NS News we can keep our community informed through these updates.

The Ag Committee has already hosted many of our Legislators and agency officials; it has become a forum for discussions and learning and will continue these presentations. We also changed the Committee's approach to emphasize both advocacy and action in such a way that we can identify impediments and remove them; and identify improvements and implement them. Our agenda will include issues such as: farm land management, water distribution, farm food safety, GMO, branding, infrastructure requirements, legislation and much more. A community vision is important for the Committee to become pro-active, so our process will take public input on the agenda topics and develop specific proposals to forward to the Neighborhood Board for their voting. The Ag Committee encourages diverse public comment, so that even conflicting opinions

can produce multiple proposals and actionable results.

Improving NS Ag sustainability is the goal and advocacy and action are the Committee's keywords. Since everyone already knows that Hawaii imports 90% of its food supply, we will evaluate issues primarily on improving local food production for our local consumers. If our Committee is to become ACTION oriented we need ACTORS. So, if you want to act to change the status quo, if you have a vision for our Ag lands, if you are solutions oriented, if you can work on improvements and if you can turn talk into action please join us. The Ag Committee meets on the second Thursday of each month at 7 p.m. in the front club room of WCA. Mahalo. Al Santoro.



***"I was in darkness,
but I took three steps
and found myself in paradise.
The first step was a good thought,
the second, a good word,
and the third, a good deed."***

Author Unknown

CASH FOR YOUR ROLEX GOLD & DIAMONDS TODAY

OUR BUYERS ARE HERE ON THE PREMISES



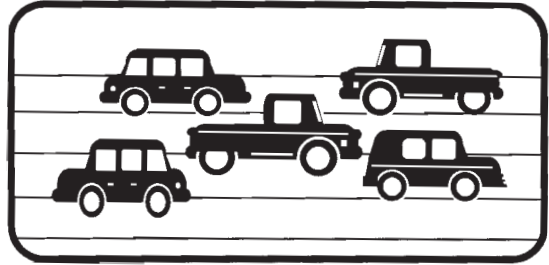
FROM OUR RETAIL AND COLLECTOR DIVISION

TOP DOLLAR FOR ROLEX AND OTHER SWISS WATCHES, DIAMONDS, GOLD ALL THIS WEEK

CALL 943-6210 **PACIFIC DIAMOND WATCH WHOLESALERS**
1356 Kapiolani Blvd.

DONATE YOUR VEHICLE

running or not



Once A Month Church
a 501c3 charity serving the North Shore

Over 150 good used cars GIVEN to needy individuals possessing valid driver's license past 5 years.

342-3969
for more information

COMMUNITY CLASSIFIED ADS

Heading: (circle) For Sale - Rentals - Services - Lost/Found - Help Wanted - Misc.

Issue Date: _____

Name: _____

Contact No.: _____

Non-business ads - \$3.50 per line, no minimum
Business ads including services - \$5.50 per line, minimum 3 lines
Lost/Found ads - no charge up to 3 lines
Box ads - \$35.00 per column inch

ADS CAN BE DROPPED OFF IN MAIL SLOT, MAILED, FAXED OR EMAILED (NShorenews@aol.com) TO NORTH SHORE NEWS. DEADLINES ARE THE FRIDAY AFTER OUR PREVIOUS ISSUE (THURSDAY IF FRIDAY IS A HOLIDAY). MAKE CHECKS PAYABLE TO: NORTH SHORE NEWS, PHONE ORDERS WITH CREDIT CARDS ONLY.

Print your ad clearly in the space below by using proper spacing and punctuation. We reserve the right to refuse any advertisement with full refund.

Non-Business Personal Ad
\$3.50 per line • No minimum
Includes tax.

Business Ad
\$5.50 per line (min. 3 lines)
Includes tax.

\$3.66																				\$17.27
7.32																				23.03
10.99																				28.79
14.65																				34.55
18.32																				
21.98																				

North Shore News P.O. Box 1117 Haleiwa, HI 96712
Ph: (808) 637-3138 • Fax: (808) 637-8862



CLASSIFIEDS

The North Shore News is published every other Wednesday and mailed free of charge to all North Shore homes and businesses. Extra copies may be obtained at our office.

PRESS RELEASE POLICY: Submit press releases in person or by fax, mail or email to Editor, North Shore News, P.O. Box 1117, Haleiwa, HI 96712. Please type your releases and keep them shorter than 200 words unless they are of an unusual news interest. Releases should be viable news stories and are published on a **space available basis only**, with priority given to those received in our office first. You may attach photos. We are not responsible for the return of any photos. All materials are submitted at owner's risk. We reserve the right to edit and/or refuse all submissions including advertising.

EDITORIAL POLICY: We welcome articles and letters from our readers. Letters to the Editor are published on a space available basis only and preference is given to shortness of length, and quality of content. We prefer to run not more than one letter, per person, per 6 month period. Letters subject to edit.

Views expressed by our contributing writers and advertisers do not necessarily reflect the view of the management and staff of the North Shore News. All rights reserved. Reproduction in whole or part without permission is prohibited. © 2011.

♥♥Need a minister for a North Shore wedding? Hundreds of knots tied for happy couples on Oahu. Simple beach-side ceremonies to formal church or chapel services. I'll make your special day an extraordinary memory. Call & leave clear message with phone number & possible date, time & place. 342-3969. Also: Vow renewals, house blessings, baby luaus.

PAUMALU ELECTRIC
David C. Hancock
638-9054 / Lic#C18074

SHORE ELECTRICAL SERVICE
New Const-Remodels
638-0049 / Lic#C20777

FREE Pregnancy Test
Above Haleiwa Post Office
Call for hours 779-4685

LGR Construction
Remodel • Repair • Design
Drafting • Painting • Small Jobs
Affordable rates. 343-4453/Lic#26759

Dog/Cat Nail Trimming
at your home only \$15.00
Call Julie 637-5395

Aloha Computer
PC Repair/Virus Removal
Fax/Copy/Internet Access
372-2667 or 237-4558

Lawn Care For You
Mowing, Trimming, Light Hedging
Call Thomas 637-5839

Ross McGerty BC24080
349-6359 • 637-9539
From Waiialua to Sunset
Make Me the First Call
for Home or Rental Repairs
or Renovations

EXPERT ELECTRICIAN
Fans, emergency services, etc.
Jim Richards 371-9369

PARADISE PLUMBING INC.
New Const • Repairs • Remodels
808-368-1473 / Lic. 29856

Holoholo Mobile Screens
New Screens • New Frames
Screen Repairs • Pet Proof Screens
Sliding Screen Doors • Affordable Rates
Call Today 783-8764

BEACH PLUMBING & ROOTER
Over 30 years experience
Call Larry 637-6400

Ohana Clean Up
Carpet Upholstery Cleaning
Pressure Washing
375-1814 • 979-5579

Handyman Services
Remodeling, Carpentry, Floors,
Concrete, all parts of Construction
Call Bob "The nicest guy in the
business" Ph. 282-2812

SULLIVAN PAINTING
Residential • Commercial • Int/Ext
Tommy 371-0998 Lic.#C31055

KA'ALA Cleaning
Home • Vacation • Interior
eco green • pet friendly
free estimate 780-3352

Seamstress
Rita Bell
497-3666

Dillon Signs & Painting
Banners & Vehicle Lettering
499-9582

LEARN TO SWIM
AT THE
HAWAII SWIM
SCHOOL
ON THE NORTH SHORE
Developing swimmers since 1982
Haleiwa Rd. at Smiley Place
637-4863

Bikram Yoga
Stretch, strengthen & stimulate mind & body.
All ages and levels.
Please call for class schedule
637-5700

SHIATSU • LOMI
Aromatherapy
Milica Barjaktarovic
Lic # MAT8348
351-0848
HumanRemodeling.com

N.S. Property Maintenance
Power wash, painting int/ext,
deck repairs, extensions,
fences, gates,
carpentry & remodels.
Maintenance, lawn & yard.
Chris 381-5213/638-0659

North Shore Pumping
Cesspool & Septic Pumping
Complete Plumbing
Services, new & repairs
Lic. & insured #25567
638-0900 • 291-5089

B.E. CONSTRUCTION
Dumptruck & Backhoe
Services
Equipment, dirt, rock,
green waste hauling
in and out
DEMOLITIONS
BRUCE ESCHE 783-9510

Flower Designs by Yuki
Wedding • Birthday • Funeral
Party • and any other occasion
808-366-9104
www.yukiflowers.com
yukiflowers@gmail.com

Next Issue - Sept. 21, 2011
Deadline Date-Sept. 8, 2011

SUBSCRIPTION RATES
If you live outside the North Shore area on Oahu, neighbor islands, or the mainland, you can subscribe to the North Shore News. Our annual subscription rate is \$27 for 25 issues delivered by standard bulk mail (2-3 weeks), or \$48 for 25 issues delivered by first class postage (3-5 days). Call our office for payment information at (808) 637-3138.

HOW TO CONTACT THE NORTH SHORE NEWS

Letters to the Editor, and other items submitted for publication consideration may be sent to us via:

MAIL: P.O. Box 1117, Haleiwa, HI 96712

E-MAIL: NShoreNews@aol.com
FAX: (808) 637-8862

PHONE: (808) 637-3138

For Advertising Rates,
call
637-3138

PUBLISHER/EDITOR
RON VALENCIANA

TYPOGRAPHY
DOWNTOWN GENERAL STORE
BOOKKEEPING & CLASSIFIEDS
LINDA SEYLER

CONTRIBUTING WRITERS
RON VALENCIANA,
BUTCH HELEMANO,
NATY HOPEWELL

CLASSIFIED ADS

hawaiiweddingminister.com

342-3969

31 years experience

Offshore Plumbing, LLC
Commercial • Residential
• Septic • Plumbing Design

Mike Duenas, owner
Lic #C28113
630-1407

Fax: 637-7870 • Office: 371-3451
offshoreplumbing@yahoo.com

BOBBY'S BODIES

Tuesday evenings at 5:00 p.m.

- Body Toning

Friday mornings at 9:00 a.m.

- Cardio Pump/Fat Burner

For more info: call Bobby, owner of BOBBY'S BODIES at 637-4150

Lisa Carley Skin Care

637-9400

lisacarley.com

67-292 Goodale Ave. #104
Waiialua Shopping Center

Windward Shoe Repair & Small Engine Clinic

Waiialua Shopping Center

Mon.-Fri. • 8am-4pm

234-8135

THE LAWN RANGER

Lawn Maintenance
no yard too hard
no lawn too far gone
We mow betta
258-6439 Dan Fatchett

Marianne Abrigo, Properties

Specializing in -
North Shore
Real Estate

Ask for our list of available properties and/or a free market analysis.

Marianne M. Abrigo

"Realtor since 1974"

Office

637-3511

Fax

637-0777

Email

mabrigo222@aol.com

Automotive Services and Restoration

- Auto Body & Paint
- Detail & Shampoo
- Upholstery

Rick Estrada - 216-9419

HARVEY'S REPAIR, LLC

24 hrs Towing Service

Specializing in opening

locked car doors

Call any time 478-0333

GERMAN CAR SERVICE

Professional-Qualified

Technician

Call Gary

637-6800

NORTH SHORE TV

PH. 637-4111

DAVID HELMS - OWNER

NESDA MEMBER

FACTORY TRAINED

REPAIRMAN

FOR LCD AND PLASMA TVS

All Area Pool & Yard Service LLC

Pool & Spa Service, Landscape & Maintenance. Free estimates & reliable service. Levi Christenson
520-1155

AllAreaPoolandYardService@
hotmail.com

BEAR Engineering

- Home & Commercial Bldg. Inspection
- Septic System Design & Consultation

Nathan M. Toothman, P.E.

nathant@beareng.com

(808) 754-3579

www.BearEng.com

Your Clean Home

Specializing in residential/vacation homes & property management.

Experienced/reliable

and affordable. Green cleaning

safe for your family and

our planet!!!

808 638-0262 or 779-6604

FOR RENT

Gmd Fl. Professional/retail
Space 466sq/1,382.75/month
Xcel Bldg. Haleiwa 779-7779

HELP WANTED

BUSSERS/SERVERS

Pizza Bob's in Haleiwa is looking for BUSSERS/SERVERS. Experience preferred. Apply in person at 66-145 Kam. Hwy.

COOKS/KITCHEN HELP

Pizza Bob's in Haleiwa is looking for kitchen personnel. Experience preferred, but will consider training the right people. Apply in person at 66-145 Kam. Hwy.

Retail Sales

Surf & Sea

Hawaii's Ocean Sports Headquarters is always looking for hard working, energetic people to become a part of our sales team. Good pay, bonus, benefits. Ocean sports experience and/or bilingual a plus. Apply in person daily 9am-7pm
62-595 Kam. Hwy., Haleiwa

Farm seeking responsible hard working individuals.

Work included but not limited to harvest, prune, clean & prep w/ flexible hours. Leave a message.
Call 707-200-1375

MISCELLANEOUS

Haleiwa Town Center

Retail space for lease.

636-2222

NS Seventh Day Adventists

Saturdays 9:15-12:15

67-174 Farrington Hwy.

(WUCC, next to WHS)

Info: 638-8209

North Shore Farmers Markets

Haleiwa: 9 a.m. to 1 p.m. Sundays, at traffic signal on the old Kamehameha Hwy at the bypass road.

Waiialua Sugar Mill: 8:30 a.m. to noon Saturdays & Wednesdays 4:40 p.m. to 7:00 p.m.

North Shore Country Market: 8 a.m. to 2 p.m. Saturdays, Sunset Beach Elementary School, 59-360 Kamehameha Hwy.

Laie: 11 a.m. to 2 p.m. June 24, July 8 and 23, Brigham-Young University-Hawaii, 55-220 Kulanui St.

Program Events at Waiialua Public Library

Writers Group meets the 2nd Saturday at 11:00 a.m.

Book Sale is the 3rd Saturday at 9:00 a.m.

Book Discussion meets the 4th Thursday at 9:30

Basic Internet Instruction, Fridays at 10:00 a.m.

Children's Story-time & Craft Activity, Saturdays at 10:00 a.m.

Toddler Time, Parent Directed (Educational toys available), Fridays at 10:00 a.m.

For more information, please call the library at 637-8286. Sponsored by the Friends of Waiialua Library. Closed on State approved Holidays.

BEACH CLEAN UP

Chun's Reef - 10 a.m.

637-2211

Last Saturday of every month
adoptabeachhawaii.org

IGREJA EVAN. BRASILEIRA

Domingos 10:00 am

Quartas 7:30 pm

Sextas-Culto de Oraçao 7:30 pm

Voce e o nosso convidado especial

Behind Hale'iwa Post Office
637-5566

Pastor Luiz • 638-2212

Polo at Mokuleia

Polo Field

2:00 p.m.-5:00 p.m.

Recycle Plastic Caps & Lids

and help save seabirds

Recycle caps & lids are being accepted at:
Goodwill Industries of Hawaii
Wahiawa

823 California Ave.

Monday-Sunday
9 a.m. - 5 p.m.

For information:

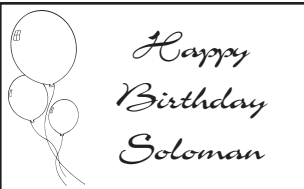
www.b-e-a-c-h.org/recycling

Ph: (808) 393-2168

CLASSIFIED ADS

OFF da ISLAND

Are you leaving Oahu on vacation or business? Do you live on a neighbor island, the mainland or foreign country and subscribe to the North Shore News? Try send us a photo of someone in front of a sign or landmark holding a copy of the NSN. Email your photo along with the person or persons' name, community of residence, telephone number and photo location to: NShoreNews@aol.com. Or, mail to OFF da ISLAND Photo, North Shore News, P.O. Box 1117, Hale'iwa, HI 96712. We cannot return photos so please send us a copy. Photos received become the property of NSN. Preference and priority will be given to emailed photos.



Outreach Services

Persons with Disability
Advocacy Benefits Housing
HCIL 54-113 Kawaipuna St.
Hauula, HI 96717
Ph. 293-9775 or 293-9777

**Save Sea Birds
Recycle Caps
www.b-e-a-c-h.org**

**Waiialua Farmers
Co-op Market**
Fresh Waiialua-grown
produce plants & more
at the Waiialua Sugar Mill

Sat. 8:30 a.m. - 2 p.m.
Wed. 4:30 p.m. - 7 p.m.

**Statewide Hotline
for Litter
1-888-592-2522**

Callers need to provide:

1. License plate number
2. Make and model of vehicle
3. Date and time and location
4. What was thrown/blown



Business Services Center

Fast & convenient fax, copy, scan, computer/internet, laminate, etc.

Across from Haleiwa post office.
North Shore Chamber of Commerce
637-4558 or 342-8557

REUNIONS

The NSN is happy to publish your school or family reunion Free of charge.

Email your announcement to NShoreNews@aol.com.

**Save Sea Turtles
Use Reusable Bags
www.b-e-a-c-h.org**

Ho'ola Like

"Healers Working Together"

Waikiki Health Center's North Shore Clinic

Majority of Insurance Plans Accepted

No Insurance • Sliding Fee Available

Open Tuesdays and Thursdays

8:30 am to 3:30 pm

Walk-ins are Welcome

Emerson Hall, Queen Liliuokalani Church

66-090 Kamehameha Highway, Haleiwa

Call 284-5212 for an appointment.

Please Report Stranded Sea Turtles

Call 983-5730 • Mon.-Fri., 7am-4pm

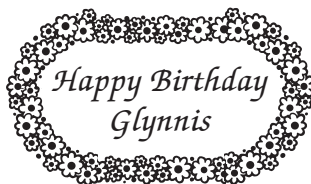
288-5685 pager wkends, holidays

587-0077 and after hours

Suspected Law Violations

541-2727 or 800-853-1964

NOAA Fisheries DLNR-DOCARE



WCA Craft Fair

Sat., Sept. 10

9:30 a.m.-5:00 p.m.

Waiialua Community

Association. For info

contact 637-4606.

Support Our Organization To Fundraise Even Faster!

give aloha

Foodland's Annual Community Matching Gifts Program

Make a donation to our organization at any Foodland, Sack N Save or Foodland Farms checkout, and Foodland and the Western Union Foundation will make a donation to our organization, too!

Organization:

Once A Month Church

Our Organization Code is

78488

How To Help:

1) Show your Maika'i Card and make a donation to our organization (up to \$249 per person) at any Foodland, Sack N Save or Foodland Farms checkout from September 1-30, 2011.

2) Foodland and the Western Union Foundation will match all donations up to a total of \$325,000 for all organizations combined.

Thank you for your support!

Pet Food Bank

Hawaiian Humane Society

Give a pet a leg up by donating to our Pet Food Bank. Drop off unopened, unexpired bags at the shelter or call 356-2217 for more information.

Dodgeball Program

Fri., Sept. 9

7:45 p.m.-9:45 p.m.

Haleiwa Gym across

Haleiwa Post Office

This free event is open to all ages and sponsored by the Waiialua Community Asso. Children require a parental waiver.

**Don't throw away that old BIKE!
Donate it to Yikes Bikes**

A non-profit program at Waiialua High & Intermediate School

637-8200

M-F • 8 a.m.-3 p.m.

Pet Walk

October 2

The 21st Annual

Pet Walk is set for

October 2 at Magic Island at Ala Moana Park.

Registration is at 7 a.m.

and the walk begins at 8

a.m. For more info,

contact events@hawaiian-

humane.org or 356-2225.

Disaster Preparedness Meeting

Where: **Sunset Beach Elementary School Cafeteria**

When: **Tuesday, September 13, 2011**

Time:

7:00 p.m.-8:30 p.m.

"EAT THE STREET" COMES TO MILILANI

Mililani Town Association and streetgrindz.com come together to bring Hawaii's food truck extravaganza to Mililani on Saturday, September 17th.

Eat the Street Mililani will feature live entertainment and over 30 of the island's most ono food trucks and street food vendors. Each vendor will be challenged to create a special keiki menu item to complement its regular menu for this fun, family-friendly, community event.

September 17, 2011, 2pm to 7pm at Recreation Center VII on Lehiwa Drive, Mililani, Mauka. For more information visit streetgrindz.com or call (808) 623-7300.

Beach Clean Up

in observance of International Coastal Clean Up

Saturday, September 17

10 a.m.-12 p.m.

at Chun's Reef

Info: www.adoptabeachhawaii.org & www.seaturtlesinternational.org



MALAMA MARKET HALEIWA:
OPEN DAILY 7 AM-9 PM
808.637.4520

MALAMA MARKET MAKAKILO:
OPEN DAILY 6 AM-10 PM
808.672.9955

Valid Dates:
9/7/11-9/13/11

Summer Sweet Melon

79¢ PER LB.



Folgers Country Roast Coffee

\$7.99

34.5 lb.



Libby's Vienna Sausage Club Pack

\$6.99

18 ct.



Hawaiian Isle Water

\$4.99

24/500 ml.



choice Certified Angus Beef® Boneless Top Sirloin Steak

\$4.99 PER LB.



U.S.D.A. CHOICE

Nabisco Nutter Butter Cookies or Ritz Crackers

2/\$6

Selected Varieties, 9.5-16 oz.



Jumbo Croissant

\$3.99 EACH

4 ct.



White Shrimp, 51/60 ct. Previously Frozen

\$5.99 PER LB.



Cottonelle Bath Tissue

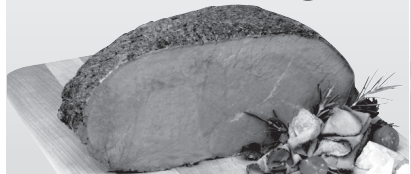
\$4.99

Double 6 Roll



Boar's Head Roast Beef, Corn Beef or Pastrami

\$10.99 PER LB.



Farm Pack Eggs Mainland, Grade A, Shell Protected, Large, 18 Pk.

\$3.99



Dreyer's Ice Cream

2/\$7.50

Selected Varieties, 48 oz.



Budweiser, Bud Light, Coors, Coors Light or Miller Lite

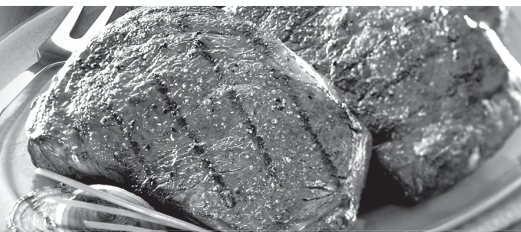
\$21.88

30 Pk. Cans Corona 18 Pk. Bottles



THURSDAY

INCLUDES:
7-8 oz. Steak
Rice • Tossed Salad • Drink



Grilled Steak LUNCH \$6.99

Hawaii Beverage Fee of 1¢ per can or bottle will be added to purchase price at checkout. An Additional Hawaii Import fee of 1¢ will be charged for all specially marked beverage containers.

Limit five units (mix/match) per purchase, unless otherwise specified. We reserve the right to limit quantities. No sales to dealers. Prices plus applicable state tax. Hawaii EBT cards welcomed.