



"E Ala Na Moku Kai Liloloa"

**36th Annual
North Shore Menehune
Surfing Championship**

*See page 13
for entry form*



NORTH SHORE NEWS September 19, 2012 VOLUME 29, NUMBER 18



Ready! Set! Go!

The 2012 surf season begins with the North Shore Menehune Surfing Championships on Oct. 20, 21, 27, 28, to be held at Hale'iwa Ali'i Beach Park. This event was originally started in 1977 by a hui of young female North Shore surfers including the Queen of Makaha, Rell Sunn. Past Menehune competitors who have made it to the upper ranks of pro surfing include Former North Shore Menehune, Fred Patacchia... also John John Florence and Dusty Payne. They are on the 2012 ASP

World Tour.

Divisions for boys and girls in short and long boards are many. The Hotshot 11-12 year old boys division features the best young future stars in the state. The Maui and Kauai surfers will be here to challenge the best of the North Shore Menehune. Everyone's favorite is the 'Kokua' division, which gives the beginning keiki a chance to participate, when the parents are allowed in the water to assist their children. All divisions are a first come first serve basis. So

be sure to get your entries in early!!! We do not accept late entries!!!

Entries are available at all Hale'iwa surf shops. Check the mail-in deadline October 1st or sign up in person at Surf-n-Sea Hale'iwa by October 5th.

For information and donations contact Contest Director Ivy Kau'i Blomfield @ 808 778 3477 or email ivykaui@live.com. Information is also available @ www.northshoremenehunesurfcontest.com.

The waves will be here soon!!! Aloha, Skill Johnson

PRE-SORTED STANDARD U.S. POSTAGE PAID Honolulu, Hawaii Permit No. 1479	Hale'iwa, HI 96712 66-437 Kamehameha Hwy., Suite 210
--	---

PROUDLY PUBLISHED IN
Hale'iwa, Hawai'i
*The Surfing
Capital of the World!*



OFF da Island at Athens, Greece

While on school break, adventurous Estes Cantarero George visited Athens, Greece. He is pictured at the base of the Parthenon Temple on the Athenian Acropolis in Athens, Greece. Estes attended Sunset Beach Elementary School and would like to give a "shout out" to his former classmates. When Estes is not busy posing for pictures, he can be seen reading the North Shore News to remind him of the good times back on Oahu's beautiful North Shore. For more information on our OFF da Island photo campaign turn to page 23.

Relaxed sunset dining...

Happy Hour
Monday ~ Friday
3 p.m. ~ 6 p.m.
Bar & Bar Area

Lunch 11 a.m. to 4:30 p.m. • Dinner 4:30 p.m. to 9 p.m.
Sunday Brunch 9 a.m.

Jameson's by the Sea
located on Oahu's Northshore
at 62-540 Kam Hwy

Info and Reservations
808.637.4336

We've Moved
66-037 Kam. Hwy., Ste. 3
Haleiwa, next to Growing Keiki

Saccoccio & Lopez
ATTORNEYS AT LAW
Serving Haleiwa since 1984

Bankruptcy
Personal Injury • Criminal Law
Landlord/Tenant
Traffic Offenses • DUI

Family Law
Adoption • Custody • Divorce
Paternity • Guardianship
Deeds, and Wills

637-7611
VISA/MC Accepted

Paul & Nita



LIVE. EAT. PLAY. NORTH SHORE.

8TH ANNUAL SEAFOOD FESTIVAL HAWAII'S SEAFOOD & FARM FRESH PRODUCE

A VARIETY OF ISLAND CHEFS FROM NORTH SHORE SHRIMP TRUCKS TO FINE DINING

FRIDAY OCTOBER 5TH
TASTE OF THE NORTH SHORE WITH SPECIAL GUEST ANUHEA AND A SPLASH OF KANIKAPILA

SATURDAY OCTOBER 6TH
CHEF UNDER THE STARS WITH THE HARMONIES OF HAPA



PURCHASE TICKETS ONLINE AT TURTLEBAYRESORT.COM - FOR MORE INFORMATION CALL 293-6000



POLYNESIAN CULTURAL CENTER

HAUNTED LAGOON

DREAMS & NIGHTMARES

JOURNEY THROUGH THE MAD MIND OF THE LAIE LADY ON HAWAII'S FAVORITE HALLOWEEN RIDE. ANNUAL PASS HOLDERS GET A FREE CANOE RIDE EVERY MONDAY, WEDNESDAY AND FRIDAY. LESS SCARY KEIKI RIDES AVAILABLE.

YOU'LL NEVER FALL ASLEEP AGAIN.

CANOE RIDES


- EVERY MONDAY, WEDNESDAY, FRIDAY & SATURDAY
* OPEN EVERY DAY EXCEPT SUNDAY FROM OCTOBER 22-31ST
- RIDES BEGIN AT 6:30 PM (CLOSED ON SUNDAYS)

TICKETS

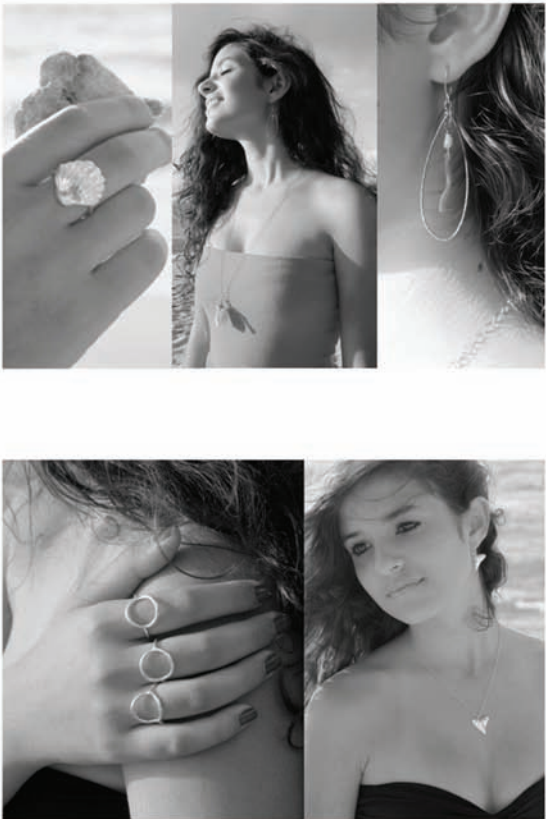
- ONLINE PURCHASES HIGHLY RECOMMENDED
- SEATS MAY SELL OUT / BOOK ONLINE NOW
- KEIKI RIDES AVAILABLE UNTIL 7:30 PM



HAUNTEDLAGOON.COM
(808) 293-3333





kaleimaeole

Handcrafted Jewelry

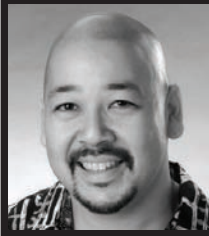
Visit us at the North Shore Country Market
(Sunset Beach Elementary across from Pipeline)
Saturdays from 8-2
www.96712jewelry.com

Beautiful handcrafted jewelry from Oahu's North Shore. Each piece is handmade and unique, using fine silver, gold fill, precious and semi precious stones, Tahitian and freshwater pearls, suede, leather, beach glass and shells. Our silver comes from reclaimed sources and is not mined.

Our collection is on display and available for purchase at the North Shore Country Market and other venues on Oahu.

See our website for a complete calendar of events.

Photos by Val Loh



Council Chair
Ernie Martin
Serving You in District 2

Ongoing effort to restore City bus service

Elected officials are charged with many responsibilities, but the most difficult by far, are the decisions that need to be made to ensure fair and efficient distribution of city resources. The fundamental responsibility to balance revenue and expenditures sometimes requires tough decisions that generate public opposition. While the City Council has had to take its fair share of criticism for such decisions, the ongoing protest against the reduction of city bus service is not one of them. Mayor Carlisle had legitimate concerns about the current and future stability of our public transportation system, but it is unlikely that he anticipated the level of distress caused by the schedule changes in dozens of routes affecting a significant number of the 220,000 daily bus riders. Since the first cutbacks were implemented in early June, the Council has been inundated with complaints, stories of difficult commutes, safety concerns and other serious hardships. Moved by public testimony, the Council has appealed to the Mayor to consider the bold step of reopening the budget to reallocate funds that can be used to restore the cutbacks in bus service. Bus service is now unreliable for many commuters, resulting in lost wages for some and safety hazardous for many others. The Mayor has a number of options that could provide the funds necessary to restore the cuts. Options include amendments to the Executive Operating Budget that would allow the Mayor to transfer funds to bus operations at his discretion. Another possible amendment would delete funding for vacant positions and post-employment benefits. There is even a \$150,000 savings in the legislative budget earmarked for a special election no longer needed due to the early resignation of Councilwoman Tulsi Gabbard. All told, more than six million dollars could be transferred to the budget of the

Department of Transportation Services. The restoration of bus service to Oahu residents is not a one time expense. It will result in a reoccurring price tag each time we face the challenge of balancing the city's budget. On September 12, the Council advanced a measure to repeal the tip fee discount for private commercial recycling companies that dispose of recycling residue at H-Power or the Waimanalo Gulch landfill. This measure would take effect in January 2013 and could result in a revenue increase of millions of dollars. It is a demonstration of the Council's support for the reallocation of city resources to ensure that public transportation services are not compromised by the overall escalation in the cost of government.

Coffee!
You can sleep when you're dead!

Coffee Gallery
NORTH SHORE
SATISFACTION GUARANTEED 100%

6:30AM - 8:00PM
NORTH SHORE MARKETPLACE
WWW.ROASTMASTER.COM

North Shore Food Bank

You can help feed the North Shore's homeless & hungry by donating non-perishable canned foods to the North Shore Food Bank located in the North Shore News Office above the Hale'iwa Post Office.

637-3138

Prefer to contribute financially?
Check can be made out to:
Once A Month Church
P.O. Box 117, Hale'iwa, HI 96712

TOP 5 MOST NEEDED ITEMS

- Financial Contributions
- Canned meats or tuna
- Canned meats & soups
- Canned vegetables & fruits
- Canned beans

No donation is too small.
501c3 non-profit

BAKED FRESH DAILY

YOUR HOMETOWN BAKERY

PAALAA KAI BAKERY SPECIALS!

Featuring...

PURCHASE A DOZEN SADA'S MALASSADAS AND GET A FREE SNOW PUFFY TO BOOT!

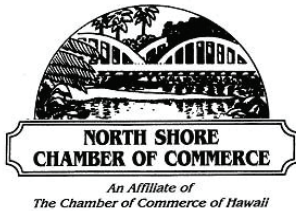
and more YUMMY treats!

Valid through the month of September. Offer expires September 30, 2012. Not combinable with VIP card, PKB 5-0 card, or other promotions. One discount per per purchase.

PAALAA KAI BAKERY

Right Next to the Paalaa Kai Mini-Mart
66-945 Kaukonahua Road
Waiialua, HI 96791
(808) 637-9795

HOME OF SADA'S MALASSADAS AND PKB SNOW PUFFIES!



Why Does the North Shore Chamber of Commerce Matter?

By Antya Miller, Executive Director

The North Shore Chamber of Commerce is a nonprofit, community development organization that works to retain what is special and unique about the North Shore community while addressing issues that face it.

Founded in 1985, Hale'iwa Main Street evolved to become the North Shore Chamber of Commerce. The Main Street program, a program of the National Trust for Historic Preservation, revitalizes communities through historic preservation. Its primary purpose is to preserve this island's last, historic, country town and district while supporting sustainable economic development. The Chamber also supports the local businesses and advocates on behalf of the business community.

The North Shore is the premier recreation area and resting place for all of Oahu and Hale'iwa is the heart of the North Shore with more than 30 structures that are protected by the Hale'iwa Special (Historic) District. It has a vibrant business community comprised of locally-owned "mom and pop" stores, surfing/ocean industry businesses and diversified agriculture rooted in our agrarian history.

Participating in the North Shore Chamber of Commerce is a way to help perpetuate the history and rural lifestyle unique and precious to all of us.

So why does the Chamber matter? Here are some highlights:

- Advocated for or helped restore historic buildings and structures including the Waialua District Court House, Anahulu Bridge, Waialua Community Association and the Hale'iwa Telephone Exchange Building (the Chamber's home).
- Published an award-winning Historical Walking Tour of Hale'iwa brochure, which is used for self- or docent-guided tours.
- Installed the "Hale'iwa Town" surfer signs on

the bypass and Welcome Sign at the entrance to Hale'iwa.

- Spearheaded the Weed Circle beautification project and landscaped it in partnership with the North Shore Outdoor Circle.
- Established a Visitor & Business Services Center which is open to the public Monday through Friday.
- Created a comprehensive website that serves the community, visitors and Chamber members as a central information center with a community calendar.
- Annually present the Hale'iwa Town Christmas Parade, now in its 12th year.
- Annually recognize people who have made significant contributions to the North Shore at the North Shore Chamber's Christmas Party.
- With the help of Council Chair Ernie Martin, successfully advocated for \$2.8 million in funding from the City and County of Honolulu for the planning and design of Hale'iwa walkways.
- Spearheaded the effort to acquire \$1.7 million toward solving the Laniakea traffic problem.
- Successfully advocated for City funds for the restoration of Hale'iwa Beach Park.
- Sponsor historical lectures three times a year.
- Print 70,000 copies of the North Shore Map twice a year which is distributed island-wide.

This is just some of what we have done but we can only accomplish what we do with your help. Please consider becoming a volunteer or join the Chamber as a member. Better yet, join us at our "Paving the Way" event on Thursday, September 27th, 5:30 p.m. for pupus and drinks. Must RSVP to 637-4558 by September 24th or info@gonorthshore.org. For more information, go to www.GoNorthShore.org.



**Video - Media
Need Web Video
Ask About Our
Special Rates**

808-781-2535



Polynesian Treasures

Hawaii's largest selection of Polynesian handicrafts and Hawaiian inspired gifts.

North Shore Marketplace * Haleiwa, Hawaii
Open daily from 10 am * (808) 637-1288



A Message From State Representative Gil Riviere

Aloha, North Shore.

In response to my calls regarding helicopter tours along the North Shore, I recently met with officials from the Federal Aviation Administration to monitor flight paths and elevations above the home of a resident at Waimea Bay.

We observed three flights during a half hour period, each on a slightly different path and elevation. An FAA official contacted each operator to confirm his elevation at various points of flight past Waimea Bay and they all responded with legally appropriate answers.

While it is possible that some flights occasionally fly lower than authorized, the FAA officials assure me that compliance is very high with air tour operators. Watching one helicopter pass at about 500-600 feet over the ocean, it was clear that this is not very high. The aircraft gained elevation as it passed and was, presumably, at 1500 feet when it went ashore. Flight standards are set by the FAA and cannot be altered by state or city law.

The biggest issue for residents below a helicopter is its noise. While not impossible, it would be difficult to establish - and enforce - local noise standards for tour helicopters. Keep in mind that police, fire, military, utility company, and private helicopters often cause more grief than the tour operators. We hope this unscheduled visit by aviation officials will re-enforce the importance of safe and legal flight standards by the air tour operators. I appreciate the prompt response and interest shown by Darett Kanayama, Joe Monfort and Ed Lee, from the FAA.

I testified against a new tax policy report that was presented to the 2012 Tax Review Commission. While some of the recommendations would improve tax payer equity and reduce regressivity for lower income earners, the underlying premise was clearly to raise taxes - dramatically. The report calls for an increase to the GET rate, a new tax on pensions, and various other ways to take more money out of our pockets, but overlooks the Legislature's responsibility to prioritize and balance expenditures against revenue.

A Programmatic EIS has been launched by the US Department of Energy to study alternative energy

in the state of Hawaii. I was the only Representative to attend the first meeting, held at McKinley High School. Officially, this study will review all forms of energy production and delivery, but a strong contingent of Lanai residents emphatically opposed the possibility of turning their island into an industrial wind farm to send power through a very expensive cable to Oahu. I agree with them.

Questions, comments and requests are always welcome by calling my office at 586-6380 or by sending an email to RepRiviere@capitol.hawaii.gov. I will serve to the best of my ability until my term expires on November 6th. Mahalo.



GET YOUR FREE PKB 5-0 CARD TODAY!



"Da Best"

1. VISIT PKB
2. ASK FOR THE PKB 5-0 CARD
3. GET A STAMP WITH EACH VISIT
3. GET 5% OFF YOUR 1ST VISIT
3. GET 10% OFF YOUR 3RD VISIT
4. GET 20% OFF YOUR 5TH VISIT

PURCHASE MUST BE OVER \$5 TO RECEIVE A STAMP. ONE VISIT STAMP PER PURCHASE AND LIMITED TO ONCE PER DAY, PER CUSTOMER.

PLUS, FILL UP YOUR STAMP CARD BY THE END OF EACH MONTH & RECEIVE A \$5 GIFT CERTIFICATE!



Stop by PKB today and ask a cashier for a FREE discount stamp card. One discount per person. Offer is not valid with other promotions or discounts.



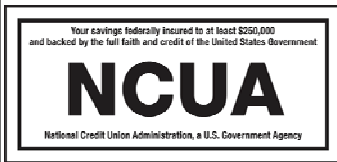
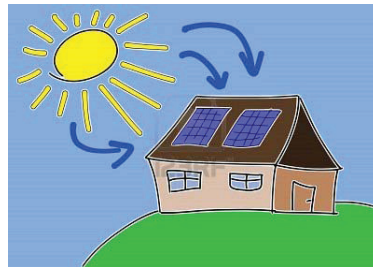
WAIALUA
Federal Credit Union



**Looking to install Solar Photovoltaic?
Consider a Home Equity Loan from Waialua FCU.
No closing costs and a low interest rate can help you on
your way to lowering your electricity bill.**

Current HELOC Rate is 3.75% APR*

*Annual Percentage Rate based on an index of 3.50% plus the monthly average of the 26 week Treasury Bill (Auction High) and may be adjusted annually each March. Please call for more details.



You are eligible to join if you live or work in Waialua or Haleiwa.

Phone: 637-5980 Located in the Waialua Shopping Center



(Lt to Rt) Boyd Ready, Todd Adams, Yvonne Alexander, Bill Quinlan, Antya Miller, Murray Shimose, Katja Jordan-King, Bill Simpson, and Joan Gossett.

New Kaiwa Garden planned

Members of the North Shore Chamber of Commerce, North Shore Outdoor Circle and Department of Transportation met at the end of August to finalize landscaping plans for the Weed Circle triangle coming into Hale'iwa across from the 7-Eleven Store. Spearheading the project is Bill Quinlan, Hale'iwa Main Street Committee Chair of the North Shore Chamber of Commerce.

Notes from Waimea Valley Botanical Garden

By Sarah Wilson, Horticultural Specialist

Waimea Valley Botanical Garden is located across from Waimea Bay on Oahu's North Shore. It is the home to over 5,000 different native and exotic plant species. There are 41 garden collections grouped according to its geographic region of origin or family.

Waimea Valley's plant collections are developed and maintained to support scientific investigation, hands-on cultural education, and plant conservation. Many of the rarest flowers and fruit on display at Waimea can only be seen here and in their distant places of origin. This story calls attention to one specific collection in the valley: Japan's Ogasawara (Bonin) Islands, a small archipelago 600 miles south of Tokyo.

The Ogasawaras are a remote group of 31 islands recently designated a UNESCO World Heritage Site. Only accessible by boat once a week from Tokyo, the islands have remained largely uninhabited.

Hawaii and Ogasawara have a few things in common. In 1830, fifteen Hawaiians, one American and five Europeans settled the islands, bringing with them taro, banana, sugarcane, pineapple, squash, pigs, deer and chickens. Currently, one in ten islanders are descendants of the original 20 settlers. Both Hawaii and Ogasawara are of volcanic origin, and are located at the same latitude, resulting in similar soil types and climate. There are also similarities in flora, including 26 Ogasawara plant species with Hawaiian relatives (for example, sandalwood, gardenia and `ohi`a).

Unfortunately due to the fragility of ecosystems

and human settlement, both archipelagos also share a high number of threatened and endangered species which depend on conservation efforts for their survival. In 1974, the Ogasawara Islands collection at Waimea Valley was established when Keith Woolliams, Park Superintendent traveled to the islands to collect specimens. Today about 40 species continue to thrive in the Valley. Because of Ogasawara's extreme isolation, our collection may be the only opportunity for people outside of Japan to observe the unique flora of these islands.

For almost four decades endangered plants have been brought to Waimea Valley from all over the world at great expense and effort. We owe it to their countries of origin where, in many cases plant conservation is an unthinkable luxury. We invite you to come and explore the flora of Ogasawara without ever leaving the comforts of the North Shore!





North Shore Real Estate Trends

**Richard D. Sterman
(R) of Sterman Realty**

First of all I want to say "Aloha" to a friend and the publisher of this newspaper, Ron Valenciana. "You don't know what you got till it's gone". We should all try to "Stand in the gap"—but what a "gap" has been left!

A TURN-AROUND

After the 1990 peak in the real estate market, it took nearly 10 years until we saw another significant "turn-around" in the volume of sales in real estate that brought about higher prices. After the 2005 peak in the real estate market, it has taken only 7 years and we're already at those same "turn-around" levels and prices. It seem to be rising a bit sooner than I had anticipated.

I think it will be a better real estate market that leads us out of this past recession and into a much better economy.

With a better economy and incredibly low interest rates, the "turn-around" in real estate will continue until we get to another peak in the real estate market possibly only 3 years from now.

I hope that many of you that have read my "Trends" articles in the past and have not bought anything up to this point will now consider it now this may be the best time to become a "homeowner" in more than a decade!

Richard D. Sterman (Realtor / P.B. / MA / e-PRO) is owner and Principal Broker of Sterman Realty in Hale'iwa. Questions or comments: richard@sterman.com or 638-8600. For more info and access to all listings: www.sterman.com.

BREAKFAST

7 AM to 11 AM DAILY



Haleiwa Shopping Plaza - 637-5095

PLUS \$2.00 Off with this Coupon

Some Restrictions Apply. See Restaurant for Details.
When Ordering Regular Priced Items. Good Anytime. One Coupon Per Person.
Can Not Be Combined with Other Discounts. Expires 10/31/2012.



Papoku's Hawaiian Grill 840-0223

Located across Haleiwa Gym
Next to Haleiwa Post Office
Open Daily from 11 a.m. - 9 p.m.

\$9.99/each

(served with rice and mac salad)

-Garlic Chicken

-Grilled Homemade Hamburger Steak

-Kalua Pig (includes lomi salmon)

-Chicken Long Rice

-Loco Moco

-Grilled Teri Miso Salmon

-Poke (market price & availability)

\$11/each

-Tripe Stew: served with rice and mac salad

-Pastele Plate: pastele, gandule rice,
bacalao salad

\$13.50


Hawaiian Plate: kalua pig, chicken long rice,
lomi salmon, pipikaula, rice or poi

-add squid luau \$3

Dessert \$6

Deep fried taro ice cream

Deep fried bread pudding




Friday, September 21st - 8pm
at the Polynesian Cultural Center
\$15 general admission / \$10 annual pass holders

See Hawaiian Reggae artists Irie Love and Rebel Souljahz live in concert at our new Gateway venue. For tickets, call 293-3333.

PCCCKamaaina.com

Irie Love



& REBEL SOULJAHZ

SIX SPECIAL NIGHTS

MONDAY \$2.95 BEER BOTTLES & DRAFT	TUESDAY \$5.00 OFF PIZZA REGULAR OR LARGE	WEDNESDAY SALAD NIGHT 1/2 OFF SALADS
THURSDAY \$3.95 NIGHT \$3.95 SLICES, SALADS, MAI TAI'S, WINE & BEER		SATURDAY \$4.50 NIGHT \$4.50 SLICES, SALADS, MAI TAI'S, WINE & BEER

FRIDAY NIGHT \$7.50 BURGER & FRIES
Dine In Only - 4:00 PM Until Closing - Haleiwa Shopping Plaza - 637-5095

PLUS \$2.00 Off with this Coupon
Some Restrictions Apply. See Restaurant for Details.
When Ordering Regular Priced Items. Good Anytime. One Coupon Per Person.
Can Not Be Combined with Other Discounts. Expires 10/31/2012.

*This Flame Stays
Love and harmony combine,
and around your souls entwine.*

*We see the power of your ways,
how in your limbs love always lays,
what you've sewn lasts more than days,
candles pass, but this flame stays.*

By Will Schoettle

For my parents on their 50th Anniversary.

The Hale'iwa Family Dental Center, Ltd.



presents
"Comfort Dentistry"
including—

- Relaxation Glasses
- Television Glasses
- Caring Staff
- Special Medication to help you relax
- Laser Cavity Detection
- New Patients Welcome!

Your teeth are much too important to neglect.

Call: 637-9652
for your reservation

We're conveniently located behind First Hawaiian Bank
in the heart of Hale'iwa.



Letters to the Editor

Dear North Shore News,

I wanted to respond to the article "Will the Majority Rule?" about the Hale'iwa Hotel in a longer form than a letter to the editor.

"Will the Majority Rule?" article discussed the restoration of the Hale'iwa Hotel. Among the reasons to build were the land has been vacant with stumps and holes, a homeless camp used to be here. Hale'iwa Beach Park is unkept, nothing has been built recently and so forth. All these reasons are irrelevant. What is important is that this property is located in a tsunami zone! In 2012, it is not good public policy to build a hotel or a "country inn" in harm's way in a tsunami zone. We have just witnessed the catastrophic events in Japan and previously in Thailand and surrounds. No one wants a headline, "Tourists swept away with a recreational hotel in Hale'iwa, Hawaii."

In the early 80's, the Development Area Organization of the North Shore Neighborhood Board reviewed the land use for the community. Puaena Point was designated resort. The Board removed that immediately because of the safety/tsunami issue. The Board had vision and safety for our guests was paramount. The employees at the hotel would also be in jeopardy. The Board's logic holds true today. Safety first! Yes, Waikiki has hotels built on the shoreline and another one has just been approved, but it is still bad public policy.

Since the "country inn" would be built in a tsunami zone, the architectural drawings need to be redone to reflect the stilts upon which the building would be built and how that would affect the restoration. The drawings are a misrepresentation of what the inn would look like. Also the cottages will all have to be on stilts. Decisions should not be based on restored beauty that is incorrect. Decisions also should not be based on surveys or popularity contests that risk life

and limb. This location is not suitable for overnight accommodations in a tsunami zone. Decisions should be based on the safety and welfare of our guests and our residents.

Aloha, Laura Boiles

Dear Editor,

I have been a North Shore resident since 1969, and for many years have hiked and rock climbed all over this island. Recently I went to the crag near Camp Erdman, and found that the area is closed to everyone. (This is a part of Kaena Point State Park.)

It is because of an unfortunate incident where one person was hit by a rock that fell. The state DLNR has closed the area since June 14. That was 3 months ago! Camp Erdman has been leading hikes up that hill for more than 50 years, and has an outstanding safety record.

It is not like the tragedy that happened at Sacred Falls in 1999 where 8 people died and many more were injured. Everyone knows that the rock at Kaliuwaa is wet and crumbly. The lava that flowed at Mokuleia crag was called "the best rock on the island" by the state geologist when he inspected it. He was there in conjunction with the Na Ala Hele Trail system which monitors hiking on this island. Rock climbers are considered an appropriate use for this area.

I am also concerned about the posted fines that the DLNR put at Mokuleia. The signs read: NOTICE—AREA CLOSED—DO NOT GO BEYOND THIS SIGN: 1st Violation \$2,500; 2nd Violation \$5,000; 3rd Violation \$10,000.

Where did the DLNR get these dollar amounts? Is this the same amount that the hikers were fined that were cited at Sacred Falls last year? Sacred Falls has been closed for 12 years. Do we have to wait that long for Mokuleia to reopen?

Mokuleia is the premier rock climbing area on this island. There are about 50 quality routes. Let's get back to the idea of hiking and rock climbing "at your own risk."

Aloha,
Steven Poor

Quality Tile Crafts

"No job too big or small!"

Specializing in Ceramic Tile,
Travertine, Marble, & Slate

Kevin Wilson

cell (808) 864-4985 office (808) 638-8492
www.QualityTileCrafts.com Free Est.

wanna learn?
NORTH SHORE
JIU-JITSU CLUB
try it out free!
men-women-kids
NorthShoreBJJ@GMail.com



The Friends of Ali'i Beach Present:

THE 36TH ANNUAL NORTSHORE MENEHUNE SURFING CHAMPIONSHIPS
OCTOBER 20TH, 21ST, 27TH & 28TH
HALE'IWA, ALI'I BEACH PARK

SATURDAY

SUNDAY

- *TIME: 8:00 A.M. Please Come Early
- *ENTRY FEE: \$25.00 (ENTER ONE DIVISION ONLY) All contestants receive a contest t-shirt, lunch, goodie bag & other cool prizes
- *DEADLINE: Postmarked by OCTOBER 1ST NO LATE ENTRIES!!!
Drop @ Surf and Sea Hale'iwa by: OCTOBER 5TH
Please sign-up early, space is LIMITED...we will be Accepting entries in a "FIRST COME, FIRST SERVED" basis
- *MAIL TO: Menehune Surf Contest P.O. Box 507 Hale'iwa, HI. 96712
- *MAKE CHECKS PAYABLE TO: FRIENDS OF ALI'I BEACH, INC.
- *INFORMATION: Contest Hotline: (808) 637-2544 (alii) @ 7am
Listen to Surf News Network @ 7am
- *WEBSITE: www.northshoremenehunesurfcontest.com
- *EMAIL: ivykai@live.com

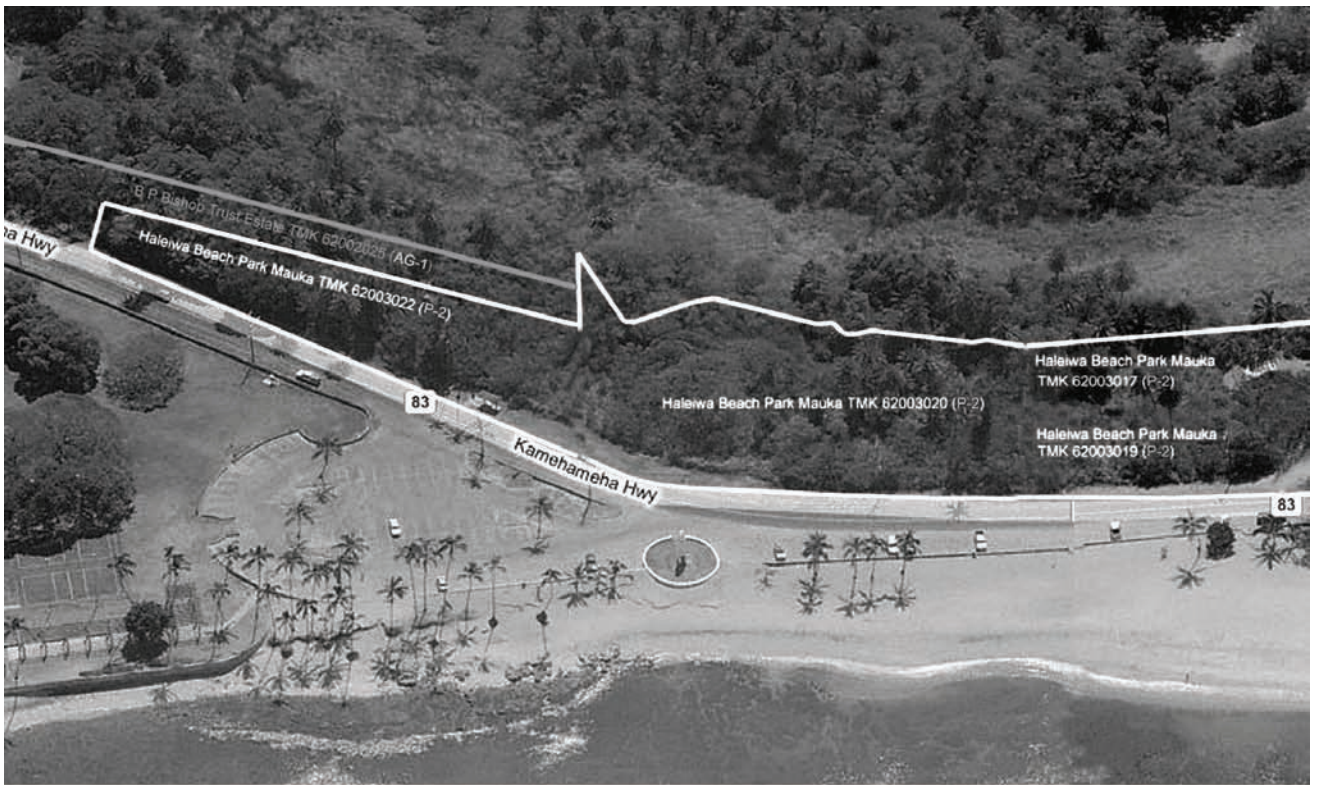
(Detach and Mail)

Name: _____ Phone: _____ Email: _____
 Address: _____ City/Zip: _____
 BirthDate: _____ Age On OCTOBER 20, 2012: _____
 SurfBoard Sponsored: YES__ NO__
 PARENT SIGNATURE: _____ DATE: _____

*The above signed parent or guardian and the participant release The Friends of Ali'I Beach, its Officers, contest staff, event sponsors, the C&C of Honolulu and the State of Hawai'i from any And all liability arising from bodily injury or property damage sustained during this event.

CONTEST DIVISIONS: (Check ONE event only) AGE ON 10/20/12: _____
KOKUA DIVISION: Boy____ Girl____ (For boys & girls, ages 3-6 who need help in the water or on the beach. Non-competitive, everyone receives a trophy)
SHORTBOARD DIVISION: (No Boards longer than 6'6") Check ONE only
 Boys/Girls 4-6 ____ (NO assistance) Boys 7-8____
 Girls 7-9 _____ Boys 9-10____
 Girls 10-12_____ Boys 11-12____
LONGBOARD DIVISION: (boards MUST be at least 3' over surfers head, NO GUNS)
 Check ONE only
 Girls 7-9 _____ Girls 10-12_____ Boys 7-9____ Boys 10-12_____

MAHALO TO ALL OUR SPONSORS!!!



The City-owned park land outlined in white (3.4 acres)

Mahalo for your Support of





is an essential part of Hale'iwa Beach Park.

Hale'iwa Beach Park Mauka

Friends of Hale'iwa Beach Park

North Shore Canoe Club
 Manu O Ke Kai Canoe Club
 North Shore Lifeguard Association
 North Shore Outdoor Circle
 Malama Loko Ea Foundation
 Hui O He'e Nalu
 Defend O'ahu Coalition
 League of Women Voters

Hawaii's Thousand Friends
 Life of the Land
 Sierra Club, O'ahu Chapter
 Surfrider Foundation, O'ahu Chapter
 Friends of Kukaniloko
 Save Sunset Beach Coalition
 Patagonia Hale'iwa

Come join your neighbors in the official City and County of Honolulu Adopt-A-Park work on this vital 3.4 acre public park. Meet Saturdays next to Jameson's Restaurant to work from 8 am to noon. Every third Saturday of the month, community volunteers are also invited to help the Malama Loko Ea Foundation with their restoration work in the adjacent Loko Ea Fishpond.

Please visit www.friendsofhaleiwabeachpark.org for more information.

Our next service at Hale'iwa Beach Park

Sunday, September 30

We're the church that gives to you



Photos by Trish Coder.

SUNDAY SCHEDULE

9 a.m.-10 a.m.
 Sunday School for keiki 4-12 yrs.
 9:30 a.m.-Pre-service give-aways
 10 a.m.-12 noon Joyful Church Service
 (10-minute sermon)
 12 noon Celebration Feast/Food for all!

OUR 2012 SERVICE SCHEDULE

September 30 • October 28
 November 25

*Join us for Christmas in September.
 Oceanic Cable will be giving out good
 cheer to those in need*

First 300 to register get a food bag.

Sponsored by North Shore Food Bank.

Lunch for everyone at 12 noon!

Includes Uncle David Anana's local beef stew, fresh salad & much more!

- Bring a beachmat, lawn chair or blanket, and be sure to bring your appetite!

SURFERS, SAINTS & SINNERS ARE WELCOME!

OAMC is a community outreach made possible by many generous supporters and volunteers. If you would like to support or volunteer for the OAMC call 690-0377.

The OAMC is scheduled to meet on the last Sunday of every month (except May & December).

"There will always be poor people in the land. Therefore I command you to be open handed toward your brother and toward the poor and needy in your land." (Deuteronomy 15:11)

Waialua - The Saga of the North Shore

Chapter 17 - Kehu

By Kalewa

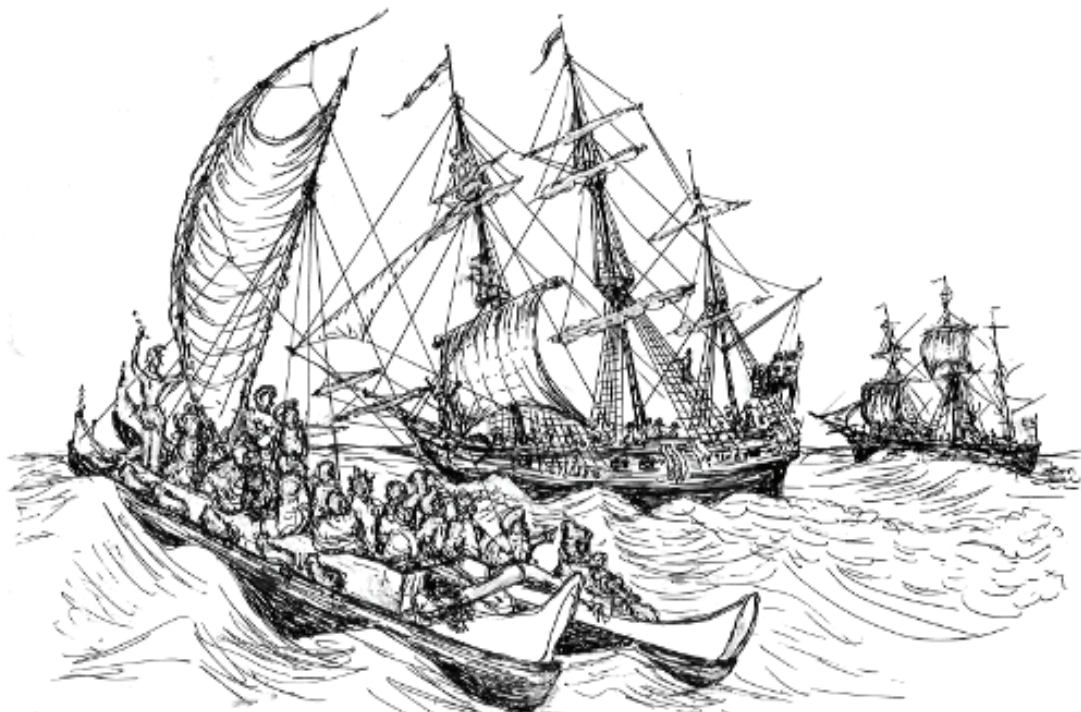
Kehu was one of those red-headed Hawaiians from Ka`u, who's family claimed lineage to the Pele clan. She had joined the throngs of people following the warrior-chief Kalaniopu`u and his Makahiki standard as it rounded the Island of Hawai`i in 1778/79. She had reached Kealakekua Bay a few days before the ships belonging to Lono dropped anchor and was amongst the first of the many young women who swam out to greet the curiously dressed white men she had heard so much about. Like most of the girls, she found a warmer welcome aboard the smaller Discovery than the larger H.M.S. Resolution, where the high chief Lono had established more kapus. Kehu, being a rather outgoing young lady, was anxious to share words with the better sorts of the newcomers and soon found

herself serving as a sort of translator, bartering for goods and services. She often arbitrated disagreements between the Hawaiian chiefs and priests and the officers and men from England.

A crafty negotiator, Kehu strived to make the new-comers feel welcome and think they had made the better bargain, while getting the best deal possible for the Hawaiians. This generally endeared her to both sides, but once the Makahiki festivities had concluded she had to choose between returning to Ka`u, following the Hawaiians to war on Maui or staying aboard the Discovery. She chose the latter and was the first to explain to the chiefs and priests why the ships needed to return to Kealakekua after the Resolution had sprung a mast.

With the Hawaiians preparing for war and the Englishmen needing yet more food and supplies, events soon spiraled out of control, ending with the death of Lono and his marines on one day and the burning of a village or two and the killing or maiming of about 100 Hawaiians before the ships could weigh anchor again.

She sailed with eight other girls aboard the Discovery, in hopes of going to that magical place called "England" where all sorts of wonders originated. As they traded on the run around Kaho`olawe, Lana`i and West Maui, she and the other girls found themselves the centers of attention, as they recited the details of the transactions of events back at Kealakekua Bay, much to the aggravation and embarrassment of the Englishmen.



Two of the girls chose to go ashore at Maui while the rest were anxious to see the legendary bounty of O`ahu for themselves. They were not disappointed as they sailed down the North Shore and were excited to the point of dance when the Englishmen dropped anchor off Waimea Bay. The young ladies were astonished, indeed crest-fallen, to find themselves placed in the canoes and sent ashore with some British clothing and trinkets right before the ships sailed off towards Kau`i.

The rejection of becoming a castaway was tempered by being one is such a wonderful place. By Hawaiian standards, Waimea Valley and the adjacent Waialua District was about as good as it gets. There was plenty of taro, sweet potatoes and fish, even after the Makahiki. Clean, fresh water flowed down many streams and best of all there was no high chief or immediate threat of warfare.

As much as she loved her new home, Kehu maintained a resentment over the rejection from the Haoles that was to violently manifest itself many years later.



An Affiliate of
The Chamber of Commerce of Hawaii

PLEASE JOIN US!



PAVING THE WAY A Business After Hours Event Celebrating Our Generous Brick Donors

Thursday, September 27, 2012 · 5:30 - 7:30 pm

North Shore Chamber of Commerce Building

FREE ADMISSION, PUPUS, & DRINKS · PRIZE DRAWINGS

RSVP by Monday, September 24, 2012 to 637-4558 or info@gonorthshore.org



Mark S. Nicoll

March 25, 1954 ~ June 20, 2012

Mark Nicoll passed away on June 20 following surgery complications. A North Shore resident for many years, Mark worked for Country Surfboards and later opened Natural Arts of Hawaii, a surf shop in the current Haleiwa Fishing Supply. While there he was featured in the popular book, "A Day in the Life of Hawaii," showcasing lifestyle in the Hawaiian Islands. Mark moved to the Big Island in 1985. There, he became very active with the Kalapana Community Association until Kalapana was engulfed by Kilauea. He eventually settled in Volcano and became well-known for his beautiful koa jewelry and furniture. Survived by father, Thomas J. Nicoll, son Mark Jr. Nicoll, daughters Christina Nicoll, Leilani Nicoll Arif, and Napua Nicoll McKinnon (oldest, Samantha passed in 1997); five grandchildren; sisters Nanette Moczan, Patty Nicoll Loveland and Jennifer Nicoll Wilson; brothers Tommy Nicoll and Bob, Maria and Cheyne Nicoll of Sunset Beach. A celebration of life and scattering of ashes is in planning to take place in Kapoho. Any old photos or funny stories about Mark would be graciously appreciated by the family and may be mailed to the Nicoll Ohana at P.O. Box 603, Kahuku, HI 96731.

Oceanside Chapel Service at Turtle Bay Resort



Every Sunday at 9 a.m. in the beautiful oceanside wedding pavilion.

- Non-denominational 45 min. service
- Traditional & Contemporary music
 - 15 minute sermon
- All are welcome! Free validated parking

Hosted by Pastor Kurt Kamikawa
808-358-6066

Pastor Bob Major 808-681-8889

*When church is pau,
enjoy dining at the Palm Terrace,
Hang Ten Pool Bar, or Lei Leis.



BULLETIN BOARD

NORTH SHORE AUTO SALON

66-540 Kamehameha Hwy., Haleiwa
(Right behind TESORO gas station)

Wash & Wax, Vacuums, Remove Waterspots
Interior Shampoos, Polish Rims, Polish Motorcycles, etc

\$5 OFF with this ad/ Package A thru E
312-8511

northshoreautodetailsalon.com

northshoreautosalon@yahoo.com

FMS

Financial Management Solutions
Income Tax Services, Comprehensive Financial Services, and Insurance Planning

Complete Financial Services are available on-line.
Please visit our website for more details.
Virtual Office Address:

www.FMS-USA.com

Office: 1-855-753-7750 • Fax: 1-866-307-3330 • Email: amber@fms-usa.com

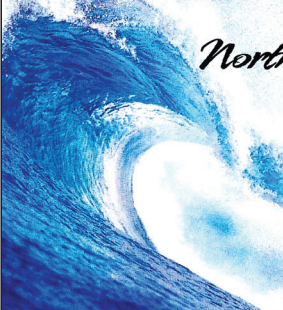
Amber M. Dagg, Registered Representative, H.D. Vest Financial Services, Inc. Securities Offered Through H.D. Vest Investment Services SM, Member SIPC. A non-bank subsidiary of Wells Fargo & Company, 6333 North State Highway 161, Fourth Floor, Irving, Texas 75038, 972-670-6000

HOLOHOLO MOBILE SCREEN SERVICE



- *new window installation
- *new screens/re-screens
- *pet proof screens
- *jalousie repairs
- *porch enclosers
- *sliding/swinging screen doors
- *pet grills & doors
- *solar screens
- *screen door roller repair

FREE ESTIMATES
808-783-8764
www.OahuScreens.com



Malia's
North Shore Massage
375-3879

Deep Tissue
Hot Stones
Lomilomi
Swedish
Shiatsu
Sports
Hapai

Malia Nicoll, LMT, MAE 2071

"THE BULLETIN BOARD THAT IS IN EVERYONE'S HOME"

BULLETIN BOARD



Specializing in vegetarian foods, vegan foods, whole foods, organic food. Wheat free, dairy free, raw foods, gluten free. A complete selection of natural foods for 37 years. Make earth day, everyday. Open 7 days. Mon.-Sat. 9am-6pm. Sun. 9am-5pm

66-445 Kam. Hwy
Haleiwa, Hawaii 96712
Next to the Post Office
808-637-6729 • 808-637-1922 fax



DR. PORTER TURNBULL
Chiropractic Orthopedist
(808) 638-8740
Appointments available Mon.-Sat.
(evenings by appointment)

- Industrial accidents & auto injuries
- Sports injuries • Spinal care
- Safe, Effective, and Gentle

N-C PLUMBING & SUPPLY

Cont. Lic. No. C-8913



- RESIDENTIAL & COMMERCIAL SALES & SERVICE
- CONTRACTING & DESIGN • HOME PLUMBING SERVICE
- PLUMBING FIXTURES, HEATERS • FREE ESTIMATES

Nestor P. Calilao (Owner)
P.O. Box 769
Waiialua, HI 96791

Bus: 637-8662
Res: 638-5157
Cellular: 372-8718

email: nncplumbing@hawaii.rr.com

Farmer & The Baker LLC

(Formerly Mokuleia Landscape & Nursery)



Trees, Palms & Shrubs

Contact Us: 808-341-1992



Restaurant & Margarita Bar

- DAILY SPECIALS -

Island Fresh Fish Tacos
Premium Margaritas

Large Parties Welcome Open Daily 9:30am - 9:30pm
637-3059 • North Shore Marketplace • Haleiwa
www.CHOLOSMEXICAN.com



COWPER CONSTRUCTION

LIC. #AC 18275

GENERAL ENGINEERING CONTRACTOR

Full Service Sitework
Contractor

Septic Systems & Tanks
25 yr. exp.

Michael Cowper 638-7200
cowperhawaii.com



754-3579
nathant@beareng.com
Waiialua, HI

- Home Inspection
- Structural Inspection
- Septic System Design
- Grading Plans
- Retaining Wall Design
- Drainage Solutions
- Utilities Planning
- Foundation Design

HAIR SPECIAL

Full Highlight and Cut \$100.00

GINA WALKER

Hairdresser to the stars
from Malibu, CA

Senior Stylist & Color Master
20 years experience

North Shore Salon & Spa
in Haleiwa Town 808-375-3984



Rick Grover
(808) 983-9331 cell
(808) 638-8120 office
rick@grovermasonry.com

License # C-18302

Munden Design & Build

Lic.#BC19632

Design • Plans • Permits • Construction
Additions & New Residences

808 391-8616

Providing quality work since 1978

North Shore News



2012 Schedule

PUBLICATION DATE

EDITION

DEADLINE DATE

October 3

#19

September 20

October 17

#20

October 4

October 31

#21

October 18

November 14

#22

November 1

November 28

#23

November 15

December 12

#24

November 29

Direct-Mailed to Every Home
MOKULEIA • WAIALUA • HALE'IWA • KAHUKU • LAIE
Every Other Wednesday
12,000 copies

"The North Shore's most popular publication" since 1970
(808) 637-3138 • NShoreNews@aol.com

COMMUNITY CLASSIFIED ADS

Heading: (circle) For Sale - Rentals - Services - Lost/Found - Help Wanted - Misc.

Issue Date: _____

Name: _____

Contact No.: _____

Non-business ads – \$4.00 per line, no minimum
Business ads including services – \$6.00 per line, minimum 3 lines
Lost/Found ads – no charge up to 3 lines
Box ads – \$40.00 per column inch

ADS CAN BE DROPPED OFF IN MAIL SLOT, MAILED, FAXED OR EMAILED (NShorenews@aol.com) TO NORTH SHORE NEWS. DEADLINES ARE THE FRIDAY AFTER OUR PREVIOUS ISSUE (THURSDAY IF FRIDAY IS A HOLIDAY). MAKE CHECKS PAYABLE TO: NORTH SHORE NEWS, PHONE ORDERS WITH CREDIT CARDS ONLY.

Print your ad clearly in the space below by using proper spacing and punctuation. We reserve the right to refuse any advertisement with full refund.

Non-Business Personal Ad
\$4.00 per line • No minimum
Includes tax.

Business Ad
\$6.00 per line (min. 3 lines)
Includes tax.

\$4.18																	\$18.89
8.37																	25.13
12.56																	32.45
16.75																	39.79
24.94																	
25.13																	

North Shore News P.O. Box 1117 Haleiwa, HI 96712
Ph: (808) 637-3138 • Fax: (808) 637-8862



CLASSIFIEDS

The North Shore News is published every other Wednesday and mailed free of charge to all North Shore homes and businesses. Extra copies may be obtained at our office.

PRESS RELEASE POLICY: Submit press releases in person or by fax, mail or email to Editor, North Shore News, P.O. Box 1117, Haleiwa, HI 96712. Please type your releases and keep them shorter than 200 words unless they are of an unusual news interest. Releases should be viable news stories and are published on a **space available basis only**, with priority given to those received in our office first. You may attach photos. We are not responsible for the return of any photos. All materials are submitted at owner's risk. We reserve the right to edit and/or refuse all submissions including advertising.

EDITORIAL POLICY: We welcome articles and letters from our readers. Letters to the Editor are published on a space available basis only and preference is given to shortness of length, and quality of content. We prefer to run not more than one letter, per person, per 6 month period. Letters subject to edit.

Views expressed by our contributing writers and advertisers do not necessarily reflect the view of the management and staff of the North Shore News. All rights reserved. Reproduction in whole or part without permission is prohibited. © 2012.

Editor & Classifieds

Linda Seyler

Typography

Downtown General Store

Photography

Trish Coder

Contributing Writers

Betty Depolito

Naty Hopewell

Choon James

Kalewa

Richard Sterman

State Senator Donovan Dela Cruz

City Councilman Ernie Martin

State Representative Gil Riviere

PAUMALU ELECTRIC

David C. Hancock
638-9054 / Lic#C18074

SHORE ELECTRICAL SERVICE

New Const-Remodels
638-0049 / Lic#C20777

LGR Construction

Remodel • Repair • Design
Drafting • Painting • Small Jobs
Affordable rates. 343-4453/Lic#26759

Dog/Cat Nail Trimming

at your home only \$15.00
Call Julie 637-5395

Aloha Computer

PC Repair/Virus Removal
Fax/Copy/Internet Access
372-2667 or 237-4558

Lawn Care For You

Mowing, Trimming, Light Hedging
Call Thomas 637-5839

EXPERT ELECTRICIAN

Fans, emergency services, etc.
Jim Richards 371-9369

PARADISE PLUMBING INC.

New Const • Repairs • Remodels
808-368-1473 / Lic. 29856

BEACH PLUMBING & ROOTER

Over 30 years experience
Call Larry 637-6400

Handyman Services

Remodeling, Carpentry, Floors,
Concrete, all parts of Construction
Call Bob "The nicest guy in the
business" Ph. 282-2812

Haugan Construction LLC

Build & Repair • Big & Small
Let's Talk
Steve 542-9269



P.O. Box 117, Hale'iwa, HI 96712
(808) 637-3138

J&L SERVICES HALEIWA
QUALITY LANDSCAPE AND
GARDEN MAINTENANCE. ALSO
PRESSURE WASHING, HEDGES
AND PLANT INSTALLATION.
CALL 673-1384 FOR EST.

Shelly Denny
Licensed Acupuncturist
808-446-2426

BOW WOW BUNGALOWS

Licensed Boarding Kennel
North Shore, Oahu
Reasonable Rates
Ph. 637-2562
These Dogs Have Fun!

HARVEY'S REPAIR, LLC

24 hrs Towing Service
Specializing in opening
locked car doors
Call any time 478-0333

GERMAN CAR SERVICE

Professional-Qualified
Technician
Call Gary
637-6800

Offshore Plumbing, Inc.

Commercial • Residential
• Septic • Solar • Design
Mike 630-1407
Steve 371-3451
Lic #C28113
Fax 638-9022
offshoreplumbing@yahoo.com

For Advertising Rates
call

(808) 769-7999

DT_OYAMA@YAHOO.COM

BIKRAM YOGA

See our new studio, anti-microbial, anti-bacterial carpet and more!

Please call for class schedule

637-5700

Your Clean Home

Vacation/Residential

Home Cleaning

Affordable • Reliable

• Green Cleaning

For Free Estimate

Call 638-0262 or 782-9941

BOBBY'S BODIES

Tuesday evenings at 5:00 p.m.

• Body Toning

Friday mornings at 9:00 a.m.

• Cardio Pump/Fat Burner

For more info: call Bobby, owner of
BOBBY'S BODIES at 637-4150

SHIATSU • LOMI

Aromatherapy

Milica Barjaktarovic

Lic # MAT8348

351-0848

HumanRemodeling.com

Need a CARE GIVER for Elderly? North Shore Care are licensed Nurse and Certified Nurse Aide, why pay agency if we charge lot less for same care and care plan...Plz call (808) 541-7266 for more info.

Painting

RRP Certified

Licensed Lic#31602

Kamaaina Rates

Oahu Precision Painting

Skip Wunderlich 220-9083

Next Issue - Oct. 3, 2012
Deadline Date-Sept. 21, 2012

SUBSCRIPTION RATES

If you live outside the North Shore area on Oahu, neighbor islands, or the mainland, you can subscribe to the North Shore News. Our annual subscription rate is \$35 for 25 issues delivered by standard bulk mail (2-3 weeks), or \$55 for 25 issues delivered by first class postage (3-5 days). Call our office for payment information at (808) 637-3138.

HOW TO CONTACT THE NORTH SHORE NEWS

Letters to the Editor, and other items submitted for publication consideration may be sent to us via:

MAIL: P.O. Box 1117, Haleiwa, HI 96712

E-MAIL: NShoreNews@aol.com

FAX: (808) 637-8862

PHONE: (808) 637-3138



CLASSIFIED ADS

LEARN TO SWIM
AT THE
HAWAII SWIM SCHOOL
ON THE NORTH SHORE
Developing swimmers since 1982
Haleiwa Rd. at Smiley Place
637-4863

Lisa Carley Skin Care
637-9400
lisacarley.com
67-292 Goodale Ave. #104
Waiialua Shopping Center

ANGELS PLUMBING
Repairs
Remodeling
Renovation
638-7878
Lic. #C12004



THE LAWN RANGER
Lawn Maintenance
no yard too hard
no lawn too far gone
We mow betta
258-6439 Dan Fatchett

WINDOW CLEANING
Expert - 30 plus years
experience.
Also pressure wash.
Jack Wheeler
594-3339

Save Sea Turtles
Use Reusable Bags
www.b-e-a-c-h.org



Marianne Abrigo, Properties

Specializing in -
North Shore
Real Estate

Ask for our list of available properties and/or a free market analysis.

Marianne M. Abrigo
"Realtor since 1974"

Office **637-3511**
Fax **637-0777**
Email mabrigo222@aol.com

HELP WANTED
BUSSERS/SERVERS
Pizza Bob's in Haleiwa is looking for BUSSERS/SERVERS. Experience preferred. Apply in person at 66-145 Kam. Hwy.

COOKS/KITCHEN HELP
Pizza Bob's in Haleiwa is looking for kitchen personnel. Experience preferred, but will consider training the right people. Apply in person at 66-145 Kam. Hwy.

Retail Sales Surf & Sea
Hawaii's Ocean Sports Headquarters is always looking for hard working, energetic people to become a part of our sales team. Good pay, bonus, benefits. Ocean sports experience and/or bilingual a plus. Apply in person daily 9am-7pm
62-595 Kam. Hwy., Haleiwa

Farm seeking responsible hard working individuals. Work included but not limited to harvest, prune, clean & prep w/ flexible hours. Leave a message. **Call 707-200-1375**

FOR SALE
'99 BMW sport-convertible
Runs well, 1 owner, body & engine good cond. Best offer
637-6366

MISCELLANEOUS
IGREJA EVAN. BRASILEIRA
Domingos 10:00 am
Quartas 7:30 pm
Sextas-Culto de Oraçao 7:30 pm

Voce e o nosso convidado especial

Behind Hale'iwa Post Office
637-5566
Pastor Luiz • 638-2212

REUNIONS
The NSN is happy to publish your school or family reunion Free of charge.
Email your announcement to NShoreNews@aol.com.

Don't throw away that old BIKE!
Donate it to **Yikes Bikes**
A non-profit program at Waiialua High & Intermediate School
637-8200
M-F • 8 a.m.-3 p.m.

FREE Senior Citizen Art Class
Jay Marr Art Gallery-Waiialua
Last Tues. of the month
10 a.m. - 12 noon
supplies included - space limited
call 637-2562

BEGIN WATERCOLOR
Jay Marr Art Gallery-Waiialua
Tues. Evenings 6:30-8:30
\$30/class includes all supplies (go home with a painting!)
call 637-2562 for details

NORTH SHORE CHAMBER OF COMMERCE
An Affiliate of
The Chamber of Commerce of Hawaii
Business Services Center
Fast & convenient fax, copy, scan, computer/internet, laminate, etc.
Across from Haleiwa post office.
North Shore Chamber of Commerce
637-4558 or 342-8557

Keep it Country
To report **ILLEGAL VACATION RENTALS**
call 768-8159 or 768-8118
You will remain anonymous
Illegal Vacation Rentals are ruining the North Shore
www.savenorthshoreneighborhoods.com

WAIALUA WRITERS
The Waiialua Library writers group meets at 11 a.m. on the second Saturday of each month at the library.
Call 637-8286.

Come Visit the North Shore Country Market
For 17 years, the North Shore Country Market has offered Aloha to the community. The North Shore Country Market is a non-profit organization created to help businesses promote their Hawaiian made products. The market is at Sunset Elementary School every Saturday from 8 am-2 pm. We want to send a big Mahalo to all the regular customers who support the market every Saturday.

Local Dump Sites
(refuse trasher stations)
OPEN 7 DAYS A WEEK • 7 a.m. - 6 p.m.
(except Christmas/New Year)
Kaaawailoa (Waiialua) 637-5511
Laie 293-8714
Wahiawa 621-3648
OPALA.ORG
Don't Dump on Hawaii Sort it out
692-5656

We Want To Hear From You
Send us your "Letter to the Editor" on any topic in this publication, or any community concern. Letters 200 words or less preferred. Include first & last name & contact phone number.
NShoreNews@aol.com

OFF da ISLAND
Are you leaving Oahu on vacation or business? Do you live on a neighbor island, the mainland or foreign country and subscribe to the North Shore News? Try send us a photo of someone in front of a sign or landmark holding a copy of the NSN. Email your photo along with the person or persons' name, community of residence, telephone number and photo location to: NShoreNews@aol.com. Or, mail to OFF da ISLAND Photo, North Shore News, P.O. Box 1117, Hale'iwa, HI 96712. We cannot return photos so please send us a copy. Photos received become the property of NSN. Preference and priority will be given to emailed photos.

BEACH CLEAN UP
Chun's Reef - 10 a.m.
637-2211
Last Saturday of every month
adoptabeachhawaii.org

Don't Miss Your Flight,
Girls 6th -8th grade girls can soar at Pacific Aviation Museum Pearl Harbor. Flight school for girls is a 3 day adventure in history and technology of flight. Oct. 2-4 for three days, 9am-3:30pm each day. Cost is \$125. Reservations are required. For more info Log on to: Education@pacificaviationmuseum.org.

Waimea Valley
Moon Walk
Friday, September 28th
Starts promptly at 7:30pm
Finish your walk by 9:00pm
\$5.00 per person

North Shore Community
BLOOD DRIVE
Saturday, Sept. 22, 8am-12 noon
Bloodmobile at
Virginia Abshier MD's office
66-214 Haleiwa Road
Bring a valid photo ID With birthdate.
Eat well and Drink plenty of fluids.



MALAMA MARKET HALEIWA:
OPEN DAILY 7 AM-9 PM
808.637.4520

MALAMA MARKET MAKAKILO:
OPEN DAILY 6 AM-10 PM
808.672.9955

Valid Dates:
9/19/12-9/25/12

Navel Orange

\$1.39 PER LB.



Aquafina Water
24/500 ml.

\$3.99



Fritos, Cheetos, or Funyuns Chips, or Frito-Lay Brand Canned Dips
2/\$5

Selected Varieties,
7.75-10.5 oz.



Darigold Milk
Selected Varieties,
1/2 Gal.

\$3.59



Assorted Pork Chops
Bone-In

\$2.49 PER LB.



Kool-Aid Jammers
Selected Varieties,
10 Pk.

\$1.99



Fresh Baked

French Bread

\$2.29 EACH



Raw Shrimp
White, 51/60 ct.,
Previously Frozen

\$5.99 PER LB.



Ajax Liquid Laundry Detergent
Selected Varieties,
50 oz.

\$3.99



Fresh Baked

Country Cookies

Assorted Varieties,
17 oz.

\$3.99 EACH



Meadow Gold Yogurt
Selected Varieties,
6 oz.

5/\$4



Dean's Country Fresh Ice Cream
Selected Varieties,
56 oz.

2/\$5



Final Touch Fabric Softener
Selected Varieties, 64 oz.

\$2.99

Heineken, Corona, Pacifico, Samuel Adams, or Sierra Nevada
12 Pk. Bottles

\$13.99

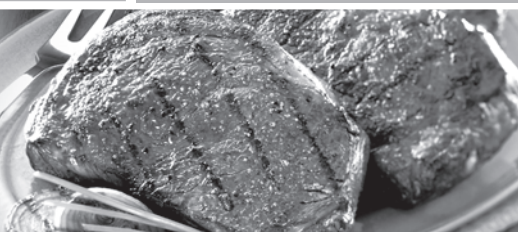


THURSDAY

INCLUDES:

7-8 oz. Steak

Rice • Tossed Salad • Drink



Grilled Steak LUNCH

\$6.99

Hawaii Beverage Fee
Hawaii Beverage Fee of 1¢ per can or bottle will be added to purchase price at checkout. An Additional Hawaii Deposit fee of 5¢ will be charged for all specially marked beverage containers.

Limit five units (mix/match) per purchase, unless otherwise specified. We reserve the right to limit quantities. No sales to dealers. Prices plus applicable state tax. Hawaii EBT cards welcomed.