



**"E Ala Na Moku Kai Liloloa"**

**2014 NS Hanapa'a Jackpot  
Fishing Tournament  
Results & Photos**

*See page 18*



NORTH SHORE NEWS July 9, 2014 VOLUME 31, NUMBER 14



**HALE'IWA ARTS FESTIVAL**

*Colin Redican*  
COLIN REDICAN

**SATURDAY, JULY 19TH & SUNDAY, JULY 20TH • HALE'IWA BEACH PARK**

**2014 Hale'iwa Arts Festival Poster Artist Colin Redican**

**COLIN REDICAN**, a Hawaii-born artist, studied at The Art Institute of Chicago, where he was graduated with a Bachelor of Fine Arts degree. Drawing, painting and sculpture are the media that make up the core of his artistic background.

Although he has worked as a freelance artist on O'ahu since 1996, his commissions - both residential and corporate - have taken him to the U.S. mainland and abroad. Colin's studio is located on the windward side of Oahu, a place from which he draws inspiration.

66-437 Kamehameha Hwy., Suite 210  
Hale'iwa, HI 96712

PRE-SORTED  
STANDARD  
U.S. POSTAGE PAID  
Honolulu, Hawaii  
Permit No. 1479

PROUDLY PUBLISHED IN  
Hale'iwa, Hawai'i  
Home of  
**The Proud Peacock**



## OFF da Island in Porto Alegre, Brazil

Former Waialua resident Dr. Dennis Sanchez Sabug now a Physical Therapist living in Los Angeles decided it was time to take a break from work and meet up with a friend Raechelle Pereira from Waialua. Raechelle packed her bags along with a NSN and met Dr. Dennis on June 20, 2014 in Porto Alegre, Brazil at the 2014 FIFA World Cup, the game of the day was Australia vs. Netherlands. Dr. Dennis was comforted by the NSN reminding him of the good times back on Oahu's beautiful North Shore. For more information on the OFF da Island campaign turn to page 23.

### Liliuokalani Protestant Church 38th Annual Benefit Luau

August 2, 2014  
1:00 p.m - 4:00 p.m.

*The menu: kalua pig, lomi-lomi salmon, chicken long rice, squid luau, rice, poi, raw crab, poke, opihi(if available), haupia, kulolo, pineapple, cake and juice.*

\$17.50 take out (11-2:00) \$20 sit in

**NSN Pet Issue** • Would you like to see your pet(s) featured in the NSN?

Email your pets picture with a caption to  
NSHoreNews@aol.com  
Deadline July 24



***Ipo shines aloha...  
Ipo is a 9 year old  
feral rescue cat.***

### The Haléiwa Family Dental Center, Ltd.



presents

**"Comfort Dentistry"**  
including—

- Relaxation Glasses
- Television Glasses
- Caring Staff
- Special Medication to help you relax
- Laser Cavity Detection
- New Patients Welcome!

Your teeth are much too important to neglect.

**Call: 637-9652**  
for your reservation

We're conveniently located behind First Hawaiian Bank  
in the heart of Haléiwa.

# An Interview with Gil Riviere, Senate District 23 Candidate

By Tom Jacobs

The North Shore News (NSN) recently caught up with Gil Riviere, long-time Waialua resident and current candidate for North Shore and Windward Senatorial District 23. He agreed to an interview, below:

**NSN:** What's your background, Gil?

**Riviere:** I grew up in Orange County in Southern California, and graduated from Cal State Fullerton. Then I travelled the world on an extended "surfing safari" for four years. In 1987 I moved to Hawaii, and have lived on the North Shore for the past 23 years. In 1991 I became a mortgage loan officer, now with Mann Mortgage.

**NSN:** Everyone on the North Shore, it seems, is a surfer.

**Riviere:** (Laughs). Guess so. It's certainly true in my case. I still paddle out whenever I can find the time.

**NSN:** Your name keeps popping up in connection with some of the hot-button issues out here like the Laniakea traffic problem, Turtle Bay expansion, and the Laie residential expansion.

**Riviere:** I'm an unrepentant social activist. As president of "Keep the North Shore Country," we, with the Sierra Club, won the state Supreme Court ruling that forced Turtle Bay Resort to issue a supplemental Environmental Impact Statement to reflect the current situation and issues surrounding Turtle Bay's planned hotel and residential expansion. Now, we're suing them to correct the Supplemental EIS they submitted. I headed the North Shore Neighborhood Board traffic committee to try to move planning forward to correct the Laniakea, "Turtle Beach," traffic jam since 2005. That job is proving much more difficult, with no state budget for planning to resolve the problem. We'll keep pushing. And, somewhat out of the headlines, I became president of the Waialua Little League in 2008, at a time when the league was bankrupt and in danger of collapse. I'm proud to say that the league is now solvent and healthy, with league teams for all ages four to fourteen, soon expanding to sixteen years. The ball field, which was in disrepair, is now ready for a ball game. Heck, I still pull weeds and mow the lawn two to six hours a week out there. (Laughs) Some folks think that I'm the paid groundskeeper there.

**NSN:** You were state representative for the North Shore when you were defeated in the last election. Here you are running for State Senator. What motivates you?

**Riviere:** (Laughs) I can't help myself. Community



Gil and Liz Riviere at a recent fund-raiser.

involvement is part of my DNA. That's why I've been such an activist for North Shore environmental and community issues. I loved my time as House Representative and can't wait to do more, much more, in the Senate.

**NSN:** You served in the House as a Republican. Now you're running for the Senate as a Democrat. Why the switch?

**Riviere:** When I was in the House, everyone at the Capital asked me, "Why are you a Republican when your views are so 'Democratic'?" I grew up as a Republican, I guess, because my family was Republican. But I've always been a moderate. As a Representative I was able to "reach across the aisle." I've come to realize that at bottom I simply

want to represent the voters of my district, which is overwhelmingly Democratic. So running as a Democrat makes sense. Heck, I really want to stand for all my constituents, Democrat or Republican.

**NSN:** Why run for the Senate?

**Riviere:** It began with my endorsement as his successor by Senator Clayton Hee, who is giving up his District 23 office to run for Lieutenant Governor. District 23 is the largest district on Oahu. It is very rural, with large tracts of farmland, watershed, coastline. It needs the kind of environmental care and managed development that I care deeply about. I just think I can serve my district and its issues effectively.

**NSN:** What do you see as those important issues?

**Riviere:** The large, rural District 23 needs an advocate for proper land use, with managed growth that preserves its rural character and agricultural resources. Its major artery is two-lane Kam Highway, which can easily become overloaded. Everyone in town relishes a "trip to the country." I want to preserve that. "Keep the Country Country." Overlaying that are the state- and island-wide issues like jobs for this generation and its keiki, cost of living, housing prices, homelessness, on and on. It's a big job, a full-time job. I've made it a goal to visit every home, every resident in the district to find out what their concerns are, not just what I think they are. That's taking up all of my afternoons. My wife asks, "When are you gonna do your day job?"

**NSN:** Do you think you'll win?

**Riviere:** Man, that's up to the voters. All I can do is do all I can do.



# 2014 OPERATION: BACKPACK

Please help our homeless and disadvantaged students with a new back to school backpack, loaded with needed school supplies.

## HERE'S HOW YOU CAN HELP

\$30 dollars will sponsor a NEW backpack LOADED with school supplies according to grade. Or donate a new backpack with school supplies.

This year the Operation: Backpack team will be working with the area schools to distribute the backpacks to the students in need.

Send donations to: North Shore News, 66-437 Kamehameha Hwy #210, Haleiwa, HI 96712 or drop off at the North Shore News office, Tuesday-Friday, 12 noon-4pm. If NSN is closed drop off backpack donations downstairs at the Foot Massage or Papokus Hawaiian Restaurant.

Deadline is July 28. For more information or if you need your donation picked up call Linda at 637-3138.

Operation: Backpack is sponsored by North Shore News and Once A Month Church



Photos by Trish Coder

**MAHALO!**

## BREAKFAST

7 AM to 10:45 AM DAILY



Haleiwa Town Center - 637-5095

**\$2.00 Off with this Coupon**

Some Restrictions Apply. See Restaurant for Details. When Ordering Regular Priced Items. Good Anytime. One Coupon Per Person. Can Not Be Combined with Other Discounts. Expires 09/30/2014.

### ANNOUNCING, ANNOUNCING, ANNOUNCING!

The new start of a Parkinson's Support Group on Oahu's North Shore and outlying areas!

When? First Saturday of each month (next meeting on Saturday, August 2nd, 2014 at 1:00 p.m. in the Admin Building fronting the parking lot).

Where? Waialua United Church of Christ, 67-174 Farrington Highway (next to Waialua High and Intermediate School).

Who? All who have interest in finding a sense of community and mutual support in meeting the challenges of Parkinson's.

Contact: Grant S.C. Lee at (808) 282-9864 or email at gleewucc@hawaii.rr.com



**Council Chair**  
**Ernie Martin**  
**Serving You in District 2**

### An Update of the Pupukea Road Rockfall Mitigation Project

The initial Pupukea Road Rockfall Mitigation Project was funded to assure that the only access roadway for more than 400 households remained open and safe for the area residents and visitors. Loose and over-hanging boulders posed a potential threat for years and this well-traveled narrow road is lined with evidence of prior rock falls. The work originally started in 2009 when the City set aside funding for the planning and design of the rockfall mitigation project. The City hired archeologists to do active field monitoring as a preliminary precaution. The scope of the project was to remove loose rocks and boulders, install rockfall protection fences and metal drapery to prevent further erosion, improve drainage and provide landscaping. It was also intended to increase the width of the road at certain places and open up the narrower roadway shoulders.

The City's Department of Design and Construction hired the consultant, URS Corp. for \$900,000 to plan and design the project. The City then bid out phase I and selected Prometheus Construction Co. for the winning bid of \$1,464,000. Phase I started in March of 2011 and construction lasted 5 to 6 months. Although the project demanded the use of the mauka side lane, Pupukea Road remained open in the construction area during working hours with traffic controlled by police officers. Funding for the second phase was included in the FY 2012 CIP budget for \$2,431,000 and the same contractor was retained. The project is expected to last for five months, with construction activity from May 1, 2014 until an estimated completion date of September 30, 2014.


In spite of the disruption of local traffic, the project will benefit the area residents by providing more permanent protection from erosion and the hazards of rock falls. During the first phase of the mitigation project, I heard from residents who had become accustomed to occasional debris on the road and who felt the roadway was much safer because of the rockfall project. I also heard from residents who protested the clearing of trees and brush and who felt the cost of the project was excessive. As with all such preventive projects, success is difficult if not impossible to measure. We have no way of knowing what might have happened had the project not been initiated. With evidence that the area was unsafe, there was really no alternative for the City but to take steps to prevent rockfalls with the potential to

cause accidents and possible loss of life. In this case, as in most such situations, it is far better to be safe than sorry.



Photo: Ole Seyler

July 23, 2014 NSN issue  
**Home Improvement  
Special Edition**  
Deadline July 10, 2014 call for  
special rates 637-3138

 **PAALAA KAI BAKERY**   
"Your Hometown North Shore Bakery"  
Order By Phone! (808) 637-9795  
66-945 Kaukonahua Rd Waiialua, HI 96791  
Right Next the Paalaa Kai Mini-Mart

*Only at PKB*

The fudge brownie was born in the USA!  
The legend goes that chocolate was  
accidentally melted into a batch of biscuits.  
Although the actual inventor will never  
be known, you can be sure that our  
**PKB Glazed Fudge Brownies  
and Powdered Sugar Brownies**  
are quite DELICIOUS!

**Open 7  
days a  
week!**  
  
**Always  
LOCAL**



[www.pkbsweets.com](http://www.pkbsweets.com)



Congratulations to Co-Chairs Kathleen Ells and Sharlyn Foo, along with the HAF Board of Directors and the many volunteers and sponsors of the

## 17<sup>th</sup> Annual Haleiwa Arts Festival

*Best wishes for another successful event!*

*from City Council Chair*

***Ernie Martin***

Paid for by the Friends of Ernie Martin P.O. Box 892727 Mililani , HI 96789

July 13, 20, 27:  
High Goal Polo  
Maui v. Oahu ...  
"The Rivalry  
Continues"

## **SUMMERTIME, AND THE POLO IS CRAZY!**

Mokuleia Polo Fields,  
Across from Dillingham Ranch  
[www.hawaiipolo.com](http://www.hawaiipolo.com)

- **TAILGATING**
- **EXCITING POLO - SUNDAYS THROUGH AUGUST**
- **PRECISION SKYDIVING BY SKYDIVE HAWAII**
- **GREAT LIVE MUSIC**
- **FULL BAR / GOURMET FOOD**

GATES OPEN: 11 A.M.

Tickets: \$10 General; \$8 Military  
\$25 Clubhouse Reserved





State Representative  
**Richard Lee Fale**  
Serving You in District 47

**Haleiwa Arts Festival Showcases  
Talent and Beauty**

Celebrating who we are as a community and the beauty of the place we live manifests itself through the artistic expressions of song, instrument, dance, pen and brush of members of a community. The Haleiwa Arts Festival is a gathering and celebration of our special North Shore community and it is a blessing to have so many within our community that can capture the uniqueness of North Shore Oahu in the art that they create. I congratulate all of you who have made the Haleiwa Arts Festival a welcomed part of summer in Haleiwa for 17 years.

What makes Hawaii the perfect place for celebrations like this is our talent and natural beauty. First, there is so much artistic talent in Haleiwa and across the Hawaii. From dancing to art, cooking to sports, our communities are filled with vibrancy and pure talent. It is so important for us as a community and as elected officials to support opportunities for talent to be fostered and displayed. That is why I am proud that the State Legislature appropriated funds to the Hawaii State Foundation on Culture and Arts, which has used those funds to support events and programs like the Haleiwa Arts Festival.

Of course, Hawaii's natural beauty provides a beautiful inspiration for artists to draw from. It is no wonder that Haleiwa has been the center of this long-time art festival. I hope we can continue to protect what makes the north shore so special, which is both the place itself and the people who reside here that contributed to the unique spirit of North Shore.

There is more we can do to help foster the continued growth of this important part of our community as it adds so much to the quality of life in Hawaii and especially on the North Shore. I look forward to ad-



vocating for supporting this sector of our community and these small businesses that support the working families of our community. Again, congratulations to all of you who worked hard to make this year's Haleiwa Arts Festival a huge success!



**10% OFF**  
Your First 60 Min Full Massage  
\*\*Includes Neck, Head, Shoulders, and Back\*\*

66-437 Kamehameha Hwy.  
Suite 101A  
Haleiwa, HI 96712  
(Next to the Haleiwa Post Office)  
(808) 366-1308


Call for an Appointment  
Walk-ins Welcome

OPEN 7 DAYS A WEEK

MAE #2890



**PAALAA KAI BAKERY**  
"Your Hometown North Shore Bakery"



Order By Phone! (808) 637-9795  
66-945 Kaukonahua Rd Waiialua, HI 96791  
Right Next the Paalaa Kai Mini-Mart

*Only at PKB*



*"It's six of one,  
half a dozen  
of the other"*

**Buy six Sada's Malassadas and  
get 25% off a 6-pak of Fudge Brownies**

**\*\*or\*\***

**Buy a 6-pak of Fudge Brownies and  
get 25% off six Sada's Malassadas**

[www.pkbsweets.com](http://www.pkbsweets.com)

*This offer cannot be combined with other promotions,  
daBest VIP card, or discounts. Offer expires July 22, 2014.*

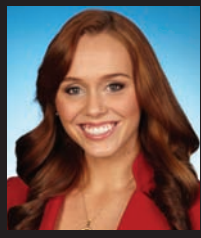


**WHO DO YOU KNOW THAT IS SICK?**

**dōTERRA®**  
**ESSENTIAL OILS ARE CHEAPER  
SAFER & MORE EFFECTIVE MEDICINE**

**FREE CONSULTATION & SAMPLES  
WWW.ESSENTIALOILS.EXPERT**

**Call Heidi at (808) 638-4774**



**Representative  
Lauren  
Matsumoto  
Serving You in District 45**

### Smart Choices for a Healthy Summer

School is out and so is the sun! How will you and your family spend this summer? Whether you'll be enjoying a trip off-island or spending time at home with the kids, there are two keys to a great summer—being active and being healthy.

Michael Bennett, defensive lineman for the Seattle Seahawks, recently gave kids an opportunity to be active this summer by holding an OCEAN Health Festival from June 17 to 27 at locations around the island including the North Shore! The objective of this free event was to provide families with insight on how to make better choices that will lead to healthier lifestyles for Hawaii's keiki. This event included a Youth Football Camp featuring NFL athletes Martellus Bennett, Marshawn Lynch, Richard Sherman, Cliff Avril, Red Bryant, Manti Te'o, and Michael Koenen. In addition to building character and sportsmanship through football, the camp provided a positive active experience for the young participants. I was able to partner with the NFL players and teach the kids how to stay active and live healthy. I even got the players to demonstrate for the kids how to jump in to a Double-Dutch rope! The five-day festival also included a healthy cooking demonstration at Waiialua Elementary School with Chef Sam Choy, serving to educate families on healthy eating and giving them affordable food alternatives to cook at home!

The OCEAN event promoted the idea that good health comes from a balance of physical and dietary fitness, which is why I want to encourage you to achieve both this summer. It's easier than it seems—here are some tips!

- Start each day off right. Have a hearty and healthy breakfast. Fruit smoothies are a kid-friendly way to get lots of nutrients. Pair this with an egg omelette and you're on your way to a healthy day!
- Keep healthy snacks on hand. One of my favorites for a hot summer day is frozen yogurt popsicles! Granola bars are a great go-to on your way out the door.
- Make sure to stay hydrated throughout the day. Homemade lemonade with honey instead of sugar is a refreshing treat, but remember to drink lots of water.
- Create an activities calendar! Include fun family plans like stand-up paddling, biking or planting a garden. On days when you choose to take a break from the sun and stay inside, encourage your kids to do productive things like read or make art to keep

their minds active as well!

- Check out locally run website, [www.keikination.com](http://www.keikination.com) to find youth sports, events, and activities around you.

I hope you utilize these tips to have a fun-filled active and healthy summer! As always, if you ever have any questions about anything that happens either in our community or at the Capitol, you can contact me by email at [RepMatsumoto@Capitol.Hawaii.gov](mailto:RepMatsumoto@Capitol.Hawaii.gov), by telephone at (808) 586-9490, or by stopping in at the Capitol in Room 303. I always look forward to seeing and hearing from you!



## Free Family Movie Night at Waiialua Community Association



## Sophia the First

Fun for the whole family!  
**Friday, July 18 at 7 p.m.**  
**FREE ADMISSION**

Drinks & Popcorn for sale

For more information, call 637-4606  
[www.WaiialuaCommunityAssociation.org](http://www.WaiialuaCommunityAssociation.org)

ROBERT M.

**PAGAN CONSTRUCTION COMPANY**

**(808) - 499 - 8617**

New construction / Additions / Remodels - Lic # 32866 Bonded / Insured  
[www.robertpaganbuilders.com](http://www.robertpaganbuilders.com)







Dear Editor:

Construction has been ongoing on Pupukea Rd. with trucks, tractors, welding machine, etc. to cut trees down, remove the roots, dig out rocks, etc. The construction is done by Prometheus Construction. I have no idea why or what they're trying to accomplish except back-up traffic and irritability of the resident driving out of Pupukea. They're also dumping all the rocks, cement tree stumps, roots over the wall where the hair-pin turn is. Is this supposed to be a dump? If so then all the residents from Pupukea can dump rubbish as well. There should be no exception. They're running a business for profit, take it to the dump site like everyone else. I remember seeing the news that a business dumped rubbish in an area where dumping is not permitted. Although there was no sign, but I don't think you're that unconcerned that you dump anywhere you please. It's making the area of \$1,000,000 homes like the City dump.

Pupukea Resident,  
Lynn Cambra

**WAIALUA LIBRARY UPCOMING EVENTS**

Ronald McDonald's Storytelling Program

Friday, July 11, 2014 at 10:30 a.m.

Summer Reading Program GRAND FINALE

Saturday, July 12, 2014 at 10:00 a.m.

Writers' Group

Saturday, July 12, 2014 at 11:00 a.m.

Topic of the Month: "My Mother was always..."

Come join us and share what you have written (either on/off chosen 'Topic of the Month') or simply sit back, listen, and enjoy the company. Meetings held every 2nd Saturday of the month at 11:00 a.m.

Used Book Sale

Saturday, July 19, 2014 from 9 a.m. to 2:00 p.m.

Readers' Group

Saturday, July 24, 2014 from 9:30 to 11:00 a.m.

Pick of the Month: "Going Postal" by Terry Pratchett (Fiction)

Join in the discussion based on the 'Pick of the Month' or simply sit back, listen, and enjoy the company. Meetings held every 4th Thursday of the month from 9:30 a.m. to 11:30 a.m.

Children's Story Time

Presented every Saturday at 10:00 a.m.

Fun for all ages!

These events are sponsored by Friends of Waialua Library. If you require a sign language interpreter or other special accommodations are needed, please call the library 10 days in advance of the scheduled event at 637- 8286. Mahalo.

WAIMEA VALLEY PRESENTS

# PILA HO'OKANI

MODERN HAWAIIAN INSTRUMENTS

**2014 SUMMER CONCERT SERIES**  
WAIMEA VALLEY PIKAKE PAVILION LAWN

SPONSORED BY:

<p><b>JULY 19</b></p> <p><b>HO'OKANI KA 'UKULELE</b></p> <p>PLAY THE 'UKULELE</p> <p><b>EDDIE KAMAE</b></p> <p><b>IMUA GARZA</b></p> <p><b>KALEI GAMIAO</b></p> <p><b>BRITTN PAIVA</b></p>	<p><b>AUGUST 23</b></p> <p><b>HO'OKANI KE KIKĀ KILA</b></p> <p>PLAY THE STEEL GUITAR</p> <p><b>TIMI ABRIGO</b></p> <p><b>JEFF AU HOY</b></p> <p><b>EDDIE PALAMA</b></p>
--	---

**PRESALE TICKETS AVAILABLE NOW!**

ONLINE: [WAIMEAVALLEY.NET](http://WAIMEAVALLEY.NET)

OR VISIT THE WAIMEA VALLEY KU'ONO WAIWAI STORE

**WAIMEA VALLEY HI'IPAKA LLC**

Call: (808) 638-7766  
[WAIMEAVALLEY.NET](http://WAIMEAVALLEY.NET)

# The Proud Peacock RESTAURANT

**Happy Hour:** Thursday - Saturday 5 - 6 PM  
**Dinner:** Thursday - Saturday 5 - 10 PM  
**Brunch:** Sunday 10 AM - 2 PM

**GRAND OPENING SPECIAL!**  
**PRIME RIB SUNDAY BRUNCH \$29.95**

On the North Shore  
Across from Waimea Bay  
Call: (808) 638-7766  
[WAIMEAVALLEY.NET](http://WAIMEAVALLEY.NET)

**WAIMEA VALLEY HI'IPAKA LLC**

## Cool tips for a hot summer from Hawaiian Electric

According to early weather predictions for El Niño conditions, it may be a long hot summer here in Hawaii and that will likely cause a spike in air conditioning use. To help island residents and businesses manage electricity use while staying cool and comfortable, Hawaiian Electric is offering its free Cool Tips for Home and Work brochure starting in July.

The colorful booklet is available on the company website, [hawaiianelectric.com](http://hawaiianelectric.com), at its Customer Service Centers at 1001 Bishop Street – Lobby and 820 Ward Avenue, and at all eight City Mill locations across Oahu. To request a copy by mail, please call 543-7511.

“When temperatures soar coupled with humidity, there’s a natural tendency to turn on the air conditioning,” said Ka iulani de Silva, Hawaiian Electric director of education and consumer affairs. “But doing little things like running ceiling fans or opening windows to let in the trade winds can go a long way to having a cool summer while conserving energy and controlling energy bills,” said de Silva.

One company investing in energy efficiency measures is Kahi Mohala, the not-for-profit psychiatric hospital in West Oahu, which received a grant from Hawaiian Electric to help implement its “Cool Down Kahi” Energy Efficiency Project. Temperatures in the facility’s patient unit common areas can run in the upper 80s to 90 degrees during the summer and the impact on patients and hospital staff range from reduced energy and more irritability to frequent headaches and fatigue. Because air conditioning would be cost prohibitive, the facility will be replacing existing fans with new multi-blade overhead fans that are more efficient in distributing air flow, thus reducing the temperatures in the facility common areas. In addition, window tinting will help to reduce the sun’s rays and incoming heat.

For homeowners and businesses, summer is the time to take advantage of sales at hardware stores and replace cooling systems that are more than 10 years old with an ENERGY STAR® qualified system. The ENERGY STAR label means the equipment has met strict energy efficiency guidelines. If sized and installed correctly, and supported by a properly sealed duct system, ENERGY STAR cooling equipment can save up to 20 percent on annual energy costs and will use 25 to 40 percent less energy than a new conventional system, according to the U.S. Environmental Protection Agency.

“Certainly, if you’re going to use an air conditioning, schedule maintenance checks to ensure the system is working safely and efficiently,” added de Silva. “Clean or change the filter, too, at least once a month.”

For more cool tips and other energy saving ideas, check out <http://www.hawaiianelectric.com/heco/Residential/Energy-Savings-Toolkit> or <http://www.hawaiianelectric.com/heco/Business/Energy-Conservation-Kits>.



### Stay cool and comfortable while managing your electric bill

Pick-up your FREE copy of “Hawaiian Electric’s Cool Tips for Home and Work,” at our walk-in Customer Service centers at 1001 Bishop Street - Lobby, 820 Ward Avenue, and all eight City Mill locations on O’ahu!



For more information, call 543-7511.



Hawaiian  
Electric

[hawaiianelectric.com](http://hawaiianelectric.com)



### The Voice of Experience for State Senator

Tested and true in the legislature, community, and business.

Colleen  
**MEYER**  
STATE SENATE

239-8019/h email: [VoteColleenMeyer@gmail.com](mailto:VoteColleenMeyer@gmail.com)  
342-3155/c Website: [ColleenMeyer.com](http://ColleenMeyer.com)

Paid for by Friends of Colleen Meyer • P.O. Box 4199 • Kaneohe, HI 96744

# HALE'IWA ARTS FESTIVAL

## JOIN THE FUN IN THE KEIKI TENT!

Once again, our Keiki artists and their parents will have a variety of hands-on projects and creative activities available. HELP DESIGN, DRAW AND COLOR MURAL! Print Making will take place in the Keiki Tent as well as Sand Art, Scratch Art, Mask and Visor projects, Chalk Pastel, Marker Art, Watercolor Art and Clay Making!



**ALL OF THESE CREATIVE KEIKI TENT PROJECTS ARE PRESENTED FREE OF CHARGE!**

## VISIT THE COMMUNITY INFORMATION TENT

**N.S. DISASTER PREPAREDNESS**  
[nsdisasterplan.org](http://nsdisasterplan.org)

**N.S. OUTDOOR CIRCLE**  
[outdoorcircle.org/branches](http://outdoorcircle.org/branches)

**N.S. CHAMBER OF COMMERCE**  
[gonorthshore.org](http://gonorthshore.org)

**H.E.A.R.T**  
[hearhorses.com](http://hearhorses.com)

**MĀLAMA PŪPŪKEA O WAIMEA**  
[pupukeawaimea.org](http://pupukeawaimea.org)

**RED CROSS**  
[redcross.org](http://redcross.org)

**N.S. COMMUNITY LAND TRUST**  
[NorthShoreLand.org](http://NorthShoreLand.org)

**WAIMEA VALLEY**  
[WaimeaValley.net](http://WaimeaValley.net)

**TURTLE BAY FOUNDATION**  
[TurtleBayFoundation.com](http://TurtleBayFoundation.com)

**WAIHUENA FARM**  
[WaihuenaFarm.com](http://WaihuenaFarm.com)

## 2014 BOARD OF DIRECTORS

**Executive Director**  
 Kathleen Ells

**Event Coordinator**  
 Patsy Psychogios

**President**  
 SharLyn Foo

**Secretary**  
 A'ala Lyman

**Treasurer**  
 William Andersen

**Graphic Design**  
 Patsy Psychogios

**Board Members**  
 Carolina Cristancho  
 Kim Devereaux  
 Kirsten Garrabrant  
 Julie Kerns Schaper

Carole Ward

**Performing Arts Coordinator**

Crystal Young

**Keiki Arts Coordinator**

Tina Markell

**Production Support**

Dawn Dasilveira

## COMMUNITY4ART

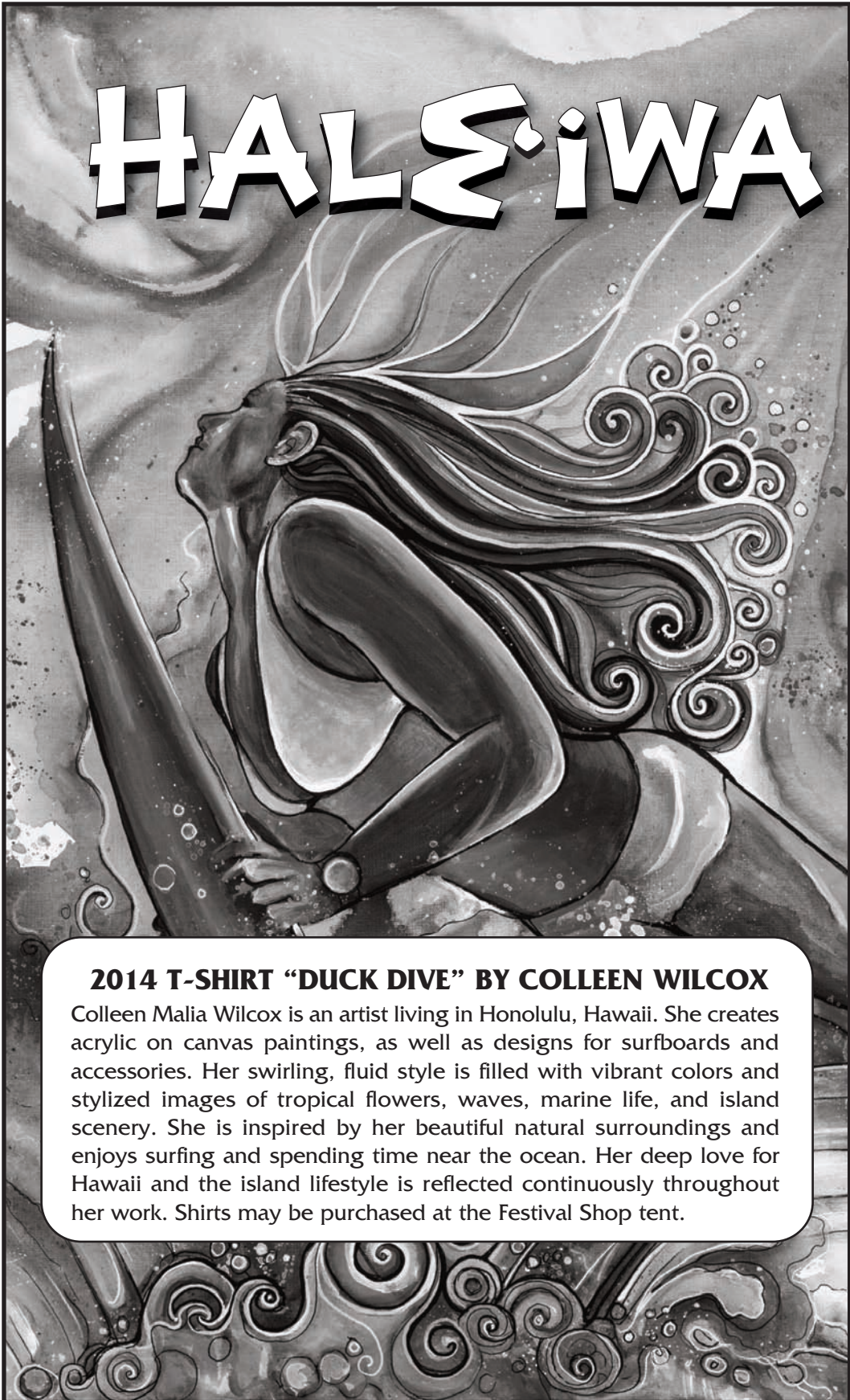
# 140 VISUAL ARTISTS

PAINTING • PHOTOGRAPHY • WOOD  
 JEWELRY • GLASS • CLAY  
 FIBER • SCULPTURE & MORE!

## LIVE PERFORMANCE ART

GUITAR • UKULELE • JAZZ • ROCK  
 FOLK • CLASSICAL • HAWAIIAN  
 POLYNESIAN • HULA & MORE!

**HALE'IWA ARTS FESTIVAL • JULY 19/20 • HALE'IWA BEACH PARK**



# HALE'IWA

# 17TH A AR

JULY 19/20



**2014 T-SHIRT "DUCK DIVE" BY COLLEEN WILCOX**  
 Colleen Malia Wilcox is an artist living in Honolulu, Hawaii. She creates acrylic on canvas paintings, as well as designs for surfboards and accessories. Her swirling, fluid style is filled with vibrant colors and stylized images of tropical flowers, waves, marine life, and island scenery. She is inspired by her beautiful natural surroundings and enjoys surfing and spending time near the ocean. Her deep love for Hawaii and the island lifestyle is reflected continuously throughout her work. Shirts may be purchased at the Festival Shop tent.

**The Haleiwa Arts Festival** is working hard to become a Zero-Waste event, offering water in Zero-Waste Cups or Eco-Bottles. **PLEASE BRING A ECO-REUSABLE BOTTLE FOR FREE FILL-UPS AT OUR WATER STATIONS** with volunteers from **Plastic Free Hawaii & Sustainable Coastlines Hawaii**. Food vendors are also using **ECO** utensils.

ANNUAL

## ARTS FESTIVAL

2014 • HALE'IWA BEACH PARK • SAT 10-6 / SUN 10-5

The Hale'iwa Arts Festival Seventeenth Annual Summer ArtFest features over 140 juried visual artists as well as musicians, singers, dancers, student art and keiki art activities. The event takes place at Hale'iwa Beach Park on the beautiful North Shore of Oahu. Festival hours are Saturday, July 19 from 10am - 6pm and Sunday, July 20 from 10am - 5pm.

Event attractions include both traditional and contemporary artists with original works and limited editions in painting, photography, ceramics, fabric, jewelry, sculpture, glass and other mediums. Art is available for viewing and purchasing directly from the artist.

This annual celebration also includes performance arts, with many performers presenting original music and dance. Entertainment is scheduled for every hour on both Saturday and Sunday.

Art demonstrations, keiki activities and a wide selection of food and beverages are also offered to educate and enhance this family oriented weekend.

Spend a special day with your family and friends at the Seventeenth Annual Hale'iwa Arts Festival Summer ArtFest. **It's Fun and It's Free!**



HALE'IWA ARTS FESTIVAL

## 2014 PERFORMING ARTISTS

MASTER OF CEREMONIES: ROCKY CANNON

## SATURDAY &amp; SUNDAY ON THE HOUR

IAN O'SULLIVAN

CELTIC PIPES AND DRUMS OF HAWAII

ALOHA DANNY AND BONGO BOB

KEALE

NA WAHINE...

TAVANA

NA LEO NAHENAHE...

ERIKA ELONA

RANDOM WEIRDOS

JOSH SHARP TRIO

USAF BAND OF THE PACIFIC

HAUMOANA

CASTLE H.S. PERFORMING ARTS AND DANCE

RON ARTIS, JR.

AND OTHER SPECIAL GUESTS!

PERFORMING ARTS COORDINATOR: CRYSTAL YOUNG

THIS EVENT IS SUPPORTED IN PART  
BY THE CITY AND COUNTY OF HONOLULU,  
THE HAWAII STATE FOUNDATION ON  
CULTURE AND THE ARTS, AND HTA.

HALE'IWA ARTS FESTIVAL • JULY 19/20 • HALE'IWA BEACH PARK

# HALE'IWA ARTS FESTIVAL

## 2014 VISUAL ARTISTS

<b>Abramovitz</b>	<b>Dodson</b>	<b>Hood</b>	<b>Lorenzo</b>	<b>Rae</b>
<b>Alves</b>	<b>Emery</b>	<b>Howard</b>	<b>Manley</b>	<b>Ramsey</b>
<b>Baginski</b>	<b>Eshak</b>	<b>Huhane</b>	<b>Marasigan</b>	<b>Redican</b>
<b>Beasley</b>	<b>Fairlamb</b>	<b>Hunter</b>	<b>Maresca</b>	<b>Revnak</b>
<b>Blaine</b>	<b>Falter</b>	<b>Iwami</b>	<b>Marquess</b>	<b>Roth</b>
<b>Boinay</b>	<b>Federspiel</b>	<b>Iwami</b>	<b>Marr</b>	<b>Ruchaber</b>
<b>Boloker</b>	<b>Fernandez</b>	<b>Jacobsen</b>	<b>Martin</b>	<b>Sato</b>
<b>Borsa</b>	<b>Forney</b>	<b>Johnson</b>	<b>McGeary</b>	<b>Sharpe</b>
<b>Boutin</b>	<b>Franco</b>	<b>Kaiwi</b>	<b>Mendame</b>	<b>Shinn</b>
<b>Boyer</b>	<b>Furuike</b>	<b>Kamaunu</b>	<b>Moore</b>	<b>Shivers</b>
<b>Braden</b>	<b>Ganz</b>	<b>Kanakanui</b>	<b>Morinaga</b>	<b>Smith</b>
<b>Brown</b>	<b>Glenn</b>	<b>Kelly</b>	<b>Mozo</b>	<b>Southard</b>
<b>Butler</b>	<b>Gommers</b>	<b>Kim</b>	<b>Myers</b>	<b>Sumida</b>
<b>Butts</b>	<b>Goto</b>	<b>Kimura</b>	<b>Newlin</b>	<b>Taylor</b>
<b>Chesebro</b>	<b>Guerrero</b>	<b>Kirby</b>	<b>Nichols</b>	<b>Thomas</b>
<b>Clark</b>	<b>Guevin</b>	<b>Kojima</b>	<b>Nguyen</b>	<b>Trice</b>
<b>Coarsey</b>	<b>Hagemann</b>	<b>Krzywon-</b>	<b>Ochoa</b>	<b>ViVerito</b>
<b>Conrad</b>	<b>Hammer</b>	<b>ski</b>	<b>O'Connor</b>	<b>Walker</b>
<b>Cox</b>	<b>Ha'o</b>	<b>Lam</b>	<b>Okahata</b>	<b>Ward</b>
<b>Cronn</b>	<b>Hart</b>	<b>Landau</b>	<b>O'Neal</b>	<b>Welles</b>
<b>Cummins</b>	<b>Harthern</b>	<b>Latronic</b>	<b>Pack</b>	<b>Werner</b>
<b>Decasa</b>	<b>Heaney</b>	<b>Lau</b>	<b>Park</b>	<b>Wilcox</b>
<b>Delventhal</b>	<b>Heck</b>	<b>Loh</b>	<b>Peterson</b>	<b>Wiley</b>
<b>Dennison</b>	<b>Hemming</b>	<b>Lee</b>	<b>Preis</b>	<b>Wong</b>
<b>Diaz</b>	<b>Hernandez</b>	<b>Lehnardt</b>	<b>Prevost</b>	<b>Wooddell</b>
<b>DiNovi</b>	<b>Holiday</b>	<b>Leung</b>	<b>Puaoi</b>	<b>Yim</b>
<b>Dixon</b>	<b>Homcy</b>	<b>Lindstrom</b>	<b>Quesenberry</b>	<b>Ziegler</b>



## HALE'IWA ARTS FESTIVAL

HaleiwaArtsFestival.org

Name: \_\_\_\_\_ Phone: \_\_\_\_\_

Business Name: \_\_\_\_\_ Email: \_\_\_\_\_

Address: \_\_\_\_\_ State: \_\_\_\_\_ Zip: \_\_\_\_\_

Gold	\$1000
Silver	\$500
Bronze	\$250
Friend	\$100
Sustaining Member	\$50
Basic Member	\$25
Other	_____

MEMBERSHIP IS FOR THE 2014 CALENDAR YEAR.

### Your Membership Counts.

Become a Member and Support the Arts!

Make check payable to:

**HALE'IWA ARTS FESTIVAL**

P.O. BOX 1141

HALE'IWA, HI 96712

For more information on how you can be a part of this organization, Please call **637-2277**.

The Haleiwa Arts Festival is a 501(c) 3 tax-exempt organization, to which contributions are tax-deductable in accordance with Federal law.

**HALE'IWA ARTS FESTIVAL • JULY 19/20 • HALE'IWA BEACH PARK**



# BANZAI NORTH SHORE WIRELESS



Coco Ho. Photo: Banzai Productions

Who is the fastest swimmer on the North Shore? Jamison Gove took that honor last month at the Cholos Waimea Swim which is part of the Surf n Sea North Shore Swim Series. His time for the 1.2 mile race was 27:56.0. Gove who has been around the North Shore for about 10 years is also quite the overall water athlete who surfs, plays water polo and bodysurfs on occasion. He is a natural who played a bit of high school and college water polo at UC Santa Barbara in California. He now is a Sunset local who works as an Oceanographer for NOAA, The National Oceanic and Atmospheric Administration doing scientific research on coral reef ecosystems in Hawaii. Gove also is on our Surf Water Polo Team, team Paumalu. The team is in training for the Duke's Oceanfest coming up in August. "Surf water polo is a super fun sport with a pretty cool history," said Gove. "The story goes that a volleyball floated out into the line up one day in Waikiki and Duke Kahanamoku picked it up while he was surfing and tossed it around with his buddies. I've been playing in the Duke Oceanfest for 8 years now, we lost to the L.A. Lifeguards last year so we plan on taking back our bragging rights." Other members of the team include Doug Cole, Todd Sells, Aukai Ferguson and Craig Watson. The Duke's OceanFest starts August 16th-24th in honor of the Duke, his birthday is August 24th. Duke Kahanamoku is considered the

best waterman in Hawaii's history! Check that out at <http://www.dukesoceanfest.com/> and for complete race results go to <http://www.timelinehawaii.com/Results/Cholos%20Overall%2014.htm>.

Coco Ho sparkled and won in Cabo San Lucas, Mexico. Ho was sensational in the ASP 6 star event, she

*Continued on page 16*



**Video \* Media**

**\* Social Media \***

**Banzai Productions!**

**Let us Promote You!**

**All Video & Media Needs & Special Kamaina Rates**

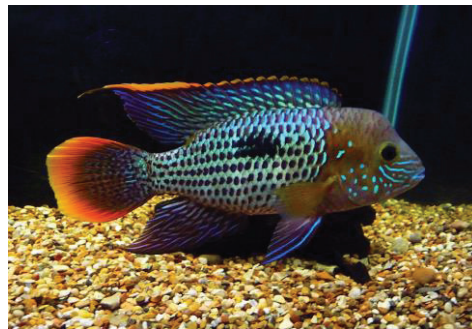
**Web video increases your impact by 35%! Don't wait**

**30 Years of Experience**

**in Marketing**

**808- 781- 2535**





Do you have a freshwater aquarium, or are you looking to start your very own? Also if you are like most North Shore locals you hate making that unnecessary drive to town if you don't have to. Well Nsfreshwaters is now open for that very reason. Located in Waialua near the sugar mill and the Aloha gas station, Nsfreshwaters is open six days a week with a wide variety of freshwater fish and the products and equipment needed to make your aquarium thrive. As an added benefit Nsfreshwaters is available to install or service your aquarium so you don't have to. Rates are based on aquarium size, location or quality.

Monday-Friday 10:30-6:00pm, Saturday 10:00-8:00pm

67-292 Goodale Ave #103

Waialua, HI 96791

Phone 916-215-9947

Nsfreshwaters@gmail.com

*Continued from  
page 15*

won every heat. The event was not part of WCT, World Championship Tour, that Ho surfs on but a good event before a break for the Women. Ho is one of the most popular surfers in the world and has a front side snap off the top that she honed at her home break at Sunset Beach. The Cabo surf at a spot called



*2014 Cholos Swim Series Waimea Bay. Photo By: Banzai Productions*

Zippers was world class all week. Waves ranged 3-5 feet and was a dominant right off of a rock outcropping. Temperatures there in summer are tough but Ho handled it well and was victorious. "I really felt comfortable," she said after the win. "The waves was good it allowed us girls to open up and push our surfing...I have never competed in this kind of heat

but it was all about keeping hydrated, drinking even when you did not feel thirsty. It was a 6 star but there were some big names in the event so it feels good to win. I am going on break now and on a trip to Indo with my brother for a photo trip then next is the U.S. Open." Good luck to Coco! The U.S. Open of Surfing is July 27-August 3rd.



## A North Shore Artist Prepares for the Hale'iwa Arts Festival

By Tom Jacobs

The North Shore News (NSN) caught up with a local artist, Dennis McGeary, a few days ago as he spread out his paints and canvas in preparation for the Hale'iwa Arts Festival, held at Hale'iwa Beach Park on the weekend of July 19 – 20.

**NSN:** How long have you exhibited at the festival?

**McGeary:** All seventeen years. I was an original participant who attended many of the organizational meetings. I love the idea of a local gathering of artists and residents. It's a great investment of my time and money, and it's great to greet fellow artists and old customers and meet new people.



**NSN:** Have you been a North Shore resident forever?

**McGeary:** (Laughs) Well, not forever. I came to the North Shore thirty years ago from the mainland and lived for a long time at the old "Cackle-Fresh" egg farm next to Loko'ea Fish Pond in Hale'iwa. These days I live in Wahiawa, but my art has been on display in Hale'iwa Town all thirty of those years: places like the Ewa Gallery and Beverly Fettig's gallery, now closed, and the Soap Cellar.

**NSN:** Your web site, [art50.com](http://art50.com), lists several awards for your paintings. Which ones are you most proud of?

**McGeary:** Highest on my list, I suppose, is the Melusine Award for Painting presented by the Honolulu Academy of the Arts several years ago. In addition to a large cash award the Academy purchased my paint-

ing for its collection. Next would be the Jean Charlot award for art excellence, also from the Academy of the Arts. I'm also proud that the Queen Lili'uokalani Trust purchased my painting of Lili'uokalani Church in Hale'iwa for their collection.

**NSN:** You have several art degrees from college, right?

**McGeary:** Yep. I studied at Olympic College in Washington State, Gloucester College in New Jersey, and I have associates' degrees in Fine Arts and Science from Leeward Community College here on Oahu.

**NSN:** What is it about the North Shore that has attracted you all these years?

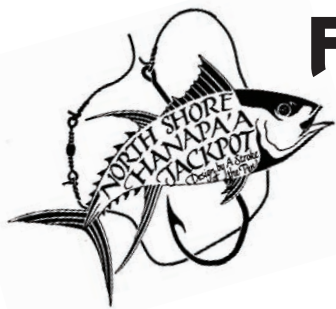
**McGeary:** In short, the land and the people. The beauty of the ocean, the clear sky, all the vivid greens, the blues, the colors of the flowers and the rainbows ... all of this bounces me out of bed in the morning. I can't wait to start a canvas. And the people have the same beauty. Local, Haole, I don't care, everyone has an open heart and mind.

**NSN:** You sound like a happy man.

**McGeary:** How can I not be?



# 2014 North Shore Hanapa'a Jackpot Fishing Tournament



## Hanapa'a Jackpot Fishing Tournament Results

Total Tournament Weight: 6,163.5 lbs

First Place:	Team #8	Musubi	682 lbs
Second Place	Team # 31	Kelsea Ann	642 lbs
Third Place	Team #20	Hook It Up	627 lbs

### Day 1 Largest Fish

Marlin	#27	Lokahi Me Kai	333 lbs.
Ahi	#11	Sasha Ann	174.5 lbs.
Mahi	# 5	Grand Slam	34.5 lbs.
Ono	#3	Anahulu	37.5 lbs.

### Day 2 Largest Fish

Marlin	#8	Musubi	260 lbs..
Ahi	#20	Hook it up	192.5 lbs.
Mahi	#16	Deep Sea	43.5 lbs.
Ono	# 31	Kelsea Ann	34 lbs.

### Tournament Largest Fish

Marlin	#27	Lokahi Me Kai	333 lbs.
Ahi	# 20	Hook It Up	192.5 lbs.
Mahi	# 16	Deep Sea	43.5 lbs.
Ono	#3	Anahulu	37.5 lbs.

### 2009 Hanapa'a Jackpot Fishing Tournament

First Place:	#21	Kirra G	1663.5lbs.
Second Place:	#30	Lady Ida	1527 lbs.
Third Place:	# 22	Karlyn	877.5 lbs.
Fourth Place:	#12	Carol Jo II	742.5 lbs.
Fifth Place:	#33	Charllote	706.5 lbs.
Sixth Place:	#25	Candice M	665 lbs.
Clean Sweep:	#2	Kamalei	

### Total Catch

Marlin:	4
Ahi	85
Mahi	6
Ono	24

TOTAL TOURNAMENT FISH CAUGHT  
14,421 lbs.



# The Kauhale Restoration Project at Waimea Valley Needs Your Help

Waimea Valley is deeply rooted in Hawaiian history. Through the centuries, land commonly changed hands with the death of each ruling chief of O'ahu. Waimea did not. Although the faces changed, Waimea Valleys' function remained the same--a sacred valley belonging to the priests.

From the time of Lono-a-wohi, [in about 1080 A.D.] Waimea and Pupukea belonged to the kahuna class. "Waimea was given to the Pa'ao kahuna class in perpetuity and was held by them up to the time of Kamehameha III when titles had to be obtained.

Waimea Valley has been a place of mana and spiritual power to Hawaiians for hundreds of years. Fragments of the legacy of religious power and centuries of Hawaiian civilization still live in Waimea Valley. In the traditional land division that expands from the mountaintop to the sea, the ahupua'a of Waimea encompasses important, culturally significant sites.

One of these sites is an ancient living site that bears silent witness to this powerful cultural heritage--Kauhale Kahiko. A kauhale is a group of hale (structures) with different functions that comprise a Hawaiian home site. Hi'ipaka LLC, Waimea Valley and a number of partners have taken on a major restoration project of this site. The restored Kauhale will feature eight carefully and authentically built hale, surrounded by plants in an open air setting where Hawaiians actually lived.

Partner organizations include the Women's Community Correctional Center (WCCC), clients at Hina Mauka (a non-profit organization that provides substance abuse treatment services) and the Pu`a Foundation (a non-profit organization that was established in 1996 as part of the apology, redress, and reconciliation process between the United Church of Christ (UCC) and the Hawaiian people). These partners utilize the

project for dual purposes: to help restore both this important historical site and to restore their clients who are going through a healing process.

The Kauhale restoration project began in December 2013 with much progress to date. A large number of ironwood trees have been harvested and debarked for hale construction. The work crews and staff have also collected tons of rocks for use in the foundations and thousands of loulu palm (*Pritchardia*) leaves for thatching. Two hale, the Hale Mua (men's eating house) and the Hale Aina (women's eating house) have been completed under the supervision and direction of world renowned master hale builder Francis Sinenci and his alaka'i (apprentices).

There is much work to be completed and community help is being requested to help complete the project. Community groups and individuals can help in the following ways:

- Attend a Kauhale work day to collect or prepare building materials. Work days are currently scheduled for July 11 and 18 from 9 a.m. to 3 p.m.
- Collect ti leaves from your yard or neighborhood and drop off the bundles to Waimea Valley for use in thatching one of the hale. Each bundle should consist of 16 brown and/or yellow leaves. It is important that each bundle contain 16 leaves. 400,000 ti leaves are needed for thatching one hale.

We are also in need of temporary housing for the master hale builder and his alaka'i. Basic accommodations for 5 to 6 people for up to 10 days at a time is needed.

The Kauhale restoration is a very special project and community members are welcome and encouraged to help. For more information or to sign up for one of the workdays contact Ah Lan Diamond at [adiamond@waimeavalley.net](mailto:adiamond@waimeavalley.net) or 638-5859; or Athena Sparks at [aparks@waimeavalley.net](mailto:aparks@waimeavalley.net) or 638-5855.

## North Shore Chamber of Commerce Farm Mapping Project

Farmers are always busy on their farms. They know how to get there each day when they go there to work for 8 to 12 hours on their production. However, during the Ag Theft meetings held at Waiialua Elementary School, we discovered that most of the farms had NO ADDRESSES. Thus, in case of fires, need for an ambulance, or the need for police help, there was no way that Emergency Responders could find their farms.

With the financial and in-kind help of Dole Foods, Pioneer Hybrid, Kamehameha Schools, and the Honolulu Police Department District 2 working with the North Shore Chamber of Commerce, the farm mapping project is completed. This information is only available to Emergency Responders and includes: name of

*By North Shore Chamber of Commerce's Agriculture Committee*

farmer, cell phone numbers, and marked addresses for the farms.

This was a difficult project to complete, but with the perseverance and hard work, especially of Alikea Napier, the project was completed. All of the streets are named, a map is available, and the cell phone numbers of the farmers are in one file. This information will assist Emergency Responders when a farmer is experiencing an emergency and get them the help that they need.

Thank you to all that made the Farm Mapping Project a success so that farmers can work diligently on their farms, knowing that IF HELP IS NEEDED, the police, fire department, or ambulance will be there in good time to service their needs.

# BULLETIN BOARD



Featuring the largest selection of certified organic produce on the North Shore. No panic...ours is organic. Open 7 days. Mon.-Sat. 9am-7pm. Sun. 9am-5pm

66-445 Kam. Hwy  
Haleiwa, Hawaii 96712  
Next to the Post Office  
808-637-6729 • 808-637-1922 fax

## The Lawn Ranger-

*We put the law back into your lawn,  
no yard too hard,  
no lawn to far gone...*

**Trees, hedges, hauling,  
multi acre properties.**

Fully insured, 25 years experience.

**258-6439**

## N-C PLUMBING & SUPPLY

Cont. Lic. No. C-8913



- RESIDENTIAL & COMMERCIAL SALES & SERVICE
- CONTRACTING & DESIGN • HOME PLUMBING SERVICE
- PLUMBING FIXTURES, HEATERS • FREE ESTIMATES

Nestor P. Calilao (Owner)  
P.O. Box 769  
Waialua, HI 96791

Bus: 637-8662  
Res: 638-5157  
Cellular: 372-8718

## NORTH SHORE FIX IT

Journeyman Capacity  
Concrete, Framing (wood, metal)  
Light Electrical, Plumbing,  
Drywall-Hang, Tape & Texture  
Drywall Patching, Painting, Pressure Wash  
25 yrs experience - (808) 222-9381



LIC. #AG 18275  
**COWPER CONSTRUCTION**

**GENERAL ENGINEERING CONTRACTOR**

**Full Service Sitework  
Contractor**

**Septic Systems & Tanks**  
25 yr. exp.

**Michael Cowper 638-7200**  
cowperhawaii.com



## Ernie Doak Plumbing, Inc.

*Quality without Compromise*

NEW CONSTRUCTION • RENOVATION • SOLAR  
*Serving Oahu's North Shore for over 20 years*

**ERNIE DOAK**  
Lic. #CT-22113  
Lic. #PJ-10630

cell **295-7943**  
office 638-8620  
erniedoakplumbing@yahoo.com

## Munden Design & Build

Lic.#BC19632

Design • Plans • Permits • Construction  
Additions & New Residences

**808 391-8616**

*Providing quality work since 1978*



License No. C28113

Commercial • Residential  
Septic • Solar • Design

**Mike 630-1407**  
Steve@offshoreplumbinginc.com



## Greekz Plumbing

License# C-32939

**372-1820**



## NORTH SHORE LAWN SERVICES

No job too big or too small we do it ALL

**OLE SEYLER**

Free estimate

Mowing, Weed Whacking, Hedge Trimming,  
Small Trees, Full Clean Up

59-720 Pupukea Plc.

(808)375-7178

olafseyler@gmail.com

**WAIALUA FARMERS' CO-OP MARKET**

WAIALUA SUGAR MILL GROUNDS  
SATURDAYS  
8:30 A.M. – 1:00 P.M

**BUY DIRECTLY FROM FARMERS**

- KAHUKU FARMS
- WAIALUA FRESH
- FIELDS OF ALOHA
- TWIN BRIDGE FARMS
- DEL'S TROPICAL FLOWERS
- T & L FLOWERS AND PALMS
- WAIALUA COOPERATIVE FARMERS

**FOOD VENDORS**  
NORTH SHORE GOODIES  
NOK THAI COOKING HAWAII  
AND MORE

\*\*\*\*\*

A MARKET MANAGED BY FARMERS  
EDITH: 637-8589

**North Shore News**



**2014 Schedule**

PUBLICATION DATE	EDITION	DEADLINE DATE
July 23	#15	July 10
August 6	#16	July 24
August 20	#17	August 7
September 3	#18	August 21
September 17	#19	September 4
October 1	#20	September 18
October 15	#21	October 2
October 29	#22	October 16
November 12	#23	October 30
November 26	#24	November 13
December 10	#25	November 27

Direct-Mailed to Every Home  
MOKULEIA • WAIALUA • HALE'IWA • KAHUKU • LAIE  
Every Other Wednesday  
12,000 copies  
"The North Shore's most popular publication" since 1970  
(808) 637-3138 • NShoreNews@aol.com • NSN4Linda@aol.com  
www.northshorenews.com



**North Shore News  
2014 Special Editions**

Call for special rates & to reserve ad space  
**637-3138**  
NShoreNews@aol.com

Publication Date	Edition	DeadlineDate
July 23	Home Improvement–Home & Garden	July 10
August 6	Pets & NS Animals Send in your pets picture to be featured in the NSN	July 24
September 3	Labor Day–Restaurant Guide	August 21



The North Shore News is published every other Wednesday and mailed free of charge to all North Shore homes and businesses. Extra copies may be obtained at our office.

**PRESS RELEASE POLICY:** Submit press releases in person or by fax, mail or email to Editor, North Shore News, 66-437 Kam. Hwy., Suite 210, Haleiwa, HI 96712. Please type your releases and keep them shorter than 200 words unless they are of an unusual news interest. Releases should be viable news stories and are published on a **space available basis only**, with priority given to those received in our office first. You may attach photos. We are not responsible for the return of any photos. All materials are submitted at owner's risk. We reserve the right to edit and/or refuse all submissions including advertising.

**EDITORIAL POLICY:** We welcome articles and letters from our readers. Letters to the Editor are published on a space available basis only and preference is given to shortness of length, and quality of content. We prefer to run not more than one letter, per person, per 6 month period. Letters subject to edit.

Views expressed by our contributing writers and advertisers do not necessarily reflect the view of the management and staff of the North Shore News. All rights reserved. Reproduction in whole or part without permission is prohibited. © 2014.

#### Editor & Classifieds

Linda Seyler

#### Typography

Downtown General Store

#### Contributing Writers

Tom Jacobs  
Betty Depolito  
Naty Hopewell  
Choon James  
Ryan Lorne

City Councilman Ernie Martin

State Representative Lauren Matsumoto  
State Representative Richard Lee Fale

#### Photography

Banzai Productions  
Ole Seyler



Please recycle this newspaper.

# CLASSIFIEDS

## SERVICES

**SHORE ELECTRICAL SERVICE**  
New Const-Remodels  
638-0049 / Lic#C20777

**PARADISE PLUMBING INC.**  
New Const • Repairs • Remodels  
808-368-1473 / Lic. 29856

**Lawn Care For You**  
Mowing, Trimming, Light Hedging  
Call Thomas 637-5839

**Handyman Services**  
Remodeling, Carpentry, Floors,  
Concrete, all parts of Construction  
Call Bob "The nicest guy in the  
business" Ph. 282-2812

**North Shore Pumping**  
Septic and Cesspool Service  
Clifford 638-0900 • 291-5099

**Computer Problems?**  
I can fix any MAC or PC.  
Chris 371-3089

**Construction Services**  
Single wall, windows  
New & remodels  
Free Estimates  
260-7386

**CASH 4 CARS**  
Up to \$150 for unwanted cars.  
852-1340

**Carpentry & Painting Services**  
Repairs/Remodeling, Termite Rot  
Doors, Cabinets, Countertops, etc.  
Reasonable Rates 271-6584

**Holo Holo Mobile Screens**  
New Screens • New Frames  
Screen Repairs • Pet Proof Screens  
Sliding Screen Doors • Affordable Rates  
783-6764



Like us on Facebook:  
[Facebook.com/NSNewsHaleiwa](https://www.facebook.com/NSNewsHaleiwa)

## PIANO LESSONS

Guitar, Ukulele, Bass,  
Songwriting  
637-4635

## Paumalu Electric Inc.

C 18074

Residential & Commercial  
New Installation & Repairs  
Renovations. Remodels  
Electric Meter Replacements  
Complete Install for Solar PV  
Dave Hancock 638-9054

## Waynebow

Window Washing  
Residential • Commercial  
New Construction • Free  
estimates  
223-4034

## HARVEY'S REPAIR, LLC

24 hrs Towing Service  
Specializing in opening  
locked car doors  
Call any time 478-0333

## N.S. Property Maintenance

Power wash, painting int/ext,  
deck repairs, extensions,  
fences, gates,  
carpentry & remodels.  
Maintenance, lawn & yard.  
Chris 381-5213/638-0659

## Golden Rule Lawn Care

Mowing, weed whacking,  
hedge trimming, rake up,  
light weeding & haul away.  
Call Matt 269-5020



## BIKRAM YOGA

**\*\*\$10 CLASSES\*\***  
3 p.m. Saturday &  
Sunday  
Please call for class schedule  
637-5700

## Your Clean Home

Vacation/Residential  
Home Cleaning  
Affordable • Reliable  
• Green Cleaning  
For Free Estimate  
Call 638-0262 or 782-9941

## BOBBY'S BODIES

Tuesday evenings at 5:00 p.m.  
• Body Toning  
Friday mornings at 9:00 a.m.  
• Cardio Pump/Fat Burner  
For more info: call Bobby, owner of  
BOBBY'S BODIES at 637-4150

## LEARN TO SWIM AT THE

## HAWAII SWIM SCHOOL

ON THE NORTH SHORE  
Developing swimmers since 1982  
Haleiwa Rd. at Smiley Place  
637-4863

## DILLON SIGN & Residential Painting

Haleiwa - 20 yrs exp.  
499-9582

## LC Development New homes, remodels.

kitchens, baths, decks,  
custom metal fab.  
BC 15645  
342-8350 • 227-2323

Next Issue - July 23, 2014  
Deadline Date-July 10, 2014

## HOW TO CONTACT THE NORTH SHORE NEWS

Letters to the Editor, and other items submitted for publication consideration may be sent to us via:

MAIL: 66-437 Kamehameha Hwy., Suite 210, Hale'iwa, HI 96712

E-MAIL: [NShoreNews@aol.com](mailto:NShoreNews@aol.com)

PHONE: (808) 637-3138

Office Hours: Closed Monday, Tuesday-Friday 12:00 a.m.-4 p.m.

[www.northshorenews.com](http://www.northshorenews.com)

# CLASSIFIED ADS

**For Advertising Rates**  
 Call 637-3138  
 or go to  
 www.northshorenews.com

**ANGELS PLUMBING**  
 Repairs  
 Remodeling  
 Renovation  
**638-7878**  
 Lic. #C12004



**GERMAN CAR SERVICE**  
 Professional-Qualified  
 Technician  
 Call Gary  
 637-6800



**Business Services Center**  
 Fast & convenient fax, copy,  
 scan, computer/internet,  
 laminate, etc.  
 Across from Haleiwa post office.  
 637-4558 or GoNorthShore.org

**Aloha Computer**  
 PC Repair/Virus Removal  
 Fax/Copy/Internet Access  
 372-2667 or 237-4558

**Haugan Construction LLC**  
 Projects Big & Small  
 Call Steve 542-9269



**Marianne Abrigo, Properties**  
 Specializing in -  
 North Shore  
 Real Estate  
 Ask for our list of avail-  
 able properties and/or a  
 free market analysis.  
**Marianne M. Abrigo**  
 "Realtor since 1974"  
 Office **637-3511**  
 Fax **637-0777**  
 Email **mabrigo222@aol.com**

## HELP WANTED

**BUSSERS/SERVERS**  
 Pizza Bob's in Haleiwa is looking  
 for BUSSERS/SERVERS. Experi-  
 ence preferred. Apply in person  
 at 66-145 Kam. Hwy.

**COOKS/KITCHEN HELP**  
 Pizza Bob's in Haleiwa is looking  
 for kitchen personnel. Experi-  
 ence preferred, but will consider  
 training the right people. Apply  
 in person at 66-145 Kam. Hwy.

**Retail Sales  
 Surf & Sea**  
 Hawaii's Ocean Sports Headquarters  
 is always looking for hard working,  
 energetic people to become a part  
 of our sales team. Good pay, bonus,  
 benefits. Ocean sports experience  
 and/or bilingual a plus. Apply in  
 person daily 9am-7pm  
 62-595 Kam. Hwy., Haleiwa

**Retail Sales Associate**  
**Polynesian Treasures  
 North Shore Marketplace**  
 Now hiring for PT/FT sales position.  
 Previous retail and management or  
 leadership experience a big plus!  
 Competitive wages plus  
 commission and bonus.  
 Fax resume to 637-8535  
 or email to  
 polynesiantreasures@hawaii.rr.com

## FOR RENT

**NS Studio Suitable**  
 for 1 person \$725/mon.  
 Utills included  
 499-7670

**North Shore News  
 2014 Special Editions  
 See Page 21**

**Liliuokalani 38th  
 Annual Benefit Luau  
 on August 2, 2014**  
 1:00 pm - 4:00 pm  
 Enjoy authentic  
 Hawaiian foods

## MISCELLANEOUS

**CALL TO ARTISTS**  
 Art/Music/Dance  
 Space available for shows or  
 classes. Call Jay Marr  
 808-637-2462

**BON DANCE**  
**July 18 & 19**  
**8:00 p.m.**  
**Haleiwa Jodo Mission**

**BON DANCE**  
**Waialua Hongwanji**  
**Bon Dance**  
**August 2 • 7 p.m.**

**North Shore Food Bank**  
 Food bag distribution  
 Wednesdays at Haleiwa  
 Gym across from  
 Post Office  
 9am-12pm

**NSN Pet Issue**  
 Would you like to see  
 your pet(s) featured in the  
 NSN? Email your pets  
 picture with a caption to:  
**NShoreNews@aol.com**

**Blood Bank of Hawaii**  
 Saturday, July 19, 2014  
 Laie Shopping Center  
 Bloodmobile  
 8:00am-11:00am

**Operation: Backpack**  
 Please help our homeless  
 and disadvantaged keiki  
 with a new backpack and  
 school supplies. See page 4  
 for more information.

**Liliuokalani Church Easter  
 Cantata Taped**  
 by Oleo on Channel 55  
 shown on the following dates:  
 Monday, July 30 @ 8:30 pm  
 Tuesday, August 1 @ 9:30 am  
 Wed., August 2 @ 12:30 pm

Save the Sea Turtles Int'l and Adopt a  
 Beach and Highway Hawaii  
**BEACH CLEAN UP**  
**Last Saturday of every month**  
 10 a.m. • 61-529 Kamehameha  
 Hwy., Haleiwa, HI 96712  
 For more information 808-637-2211  
 Check out our website at:  
 http://adoptabeachhawaii.com

**New Hope Haleiwa**  
 "Anchored to God's word,  
 led by his spirit" @Haleiwa  
 Elementary School  
 9:00am Service  
 621-9363

**Voice of God  
 Ministries**  
 Jesus Loves You  
 If you need Prayer  
 Call 808-373-0294

**Queen's  
 Open Market**  
 Sundays 1:00 to 5:00 pm  
 Liliuokalani Church

**Classified Ad Rates**  
 3 lines (min.) \$18.89  
 4 lines \$25.13  
 5 lines \$32.45  
 1" Box Ad \$41.88  
 (27 characters in each line)  
 Include your contact information.  
 \*Ads can be dropped off in mail slot,  
 mailed, or emailed. Pay by check pay-  
 able to: North Shore News or credit  
 card by phone order.  
 We reserve the right to refuse any  
 advertisement with a full refund.  
 North Shore News • 66-437 Kam. Hwy.,  
 Suite 210, Haleiwa, HI 96712  
 • (808) 637-3138 • NShoreNews@aol.com

**FREE ADS**  
**Garage & Yard Sales,  
 Reunions, Lost & Found.**  
 Email ad to:  
**NShoreNews@aol.com**

**OFF da ISLAND**  
 Are you leaving Oahu on vaca-  
 tion or business? Do you live on a  
 neighbor island, the mainland or  
 foreign country and subscribe to  
 the North Shore News? Try send  
 us a photo of someone in front  
 of a sign or landmark holding a  
 copy of the NSN. Email your photo  
 along with the person or persons'  
 name, community of residence,  
 telephone number and photo lo-  
 cation to: NShoreNews@aol.com.



**Malama Market Haleiwa:**  
Open Daily 7 a.m.-9 p.m.  
(808) 637-4520

**Malama Market Makakilo:**  
Open Daily 6 a.m.-10 p.m.  
(808) 672-9955

Valid Dates:  
**7/9/14-7/15/14**

## Deals of the Week!

**Yellow Peaches  
or White  
Nectarines**

**\$1.49**  
LB.



**Fresh  
Ground Beef**

80% Lean, Jumbo Pack,  
5 lbs. or More

**\$3.79**  
LB.

Cook normally to 160°F  
**LARGE SIZE**  
**or Fresh  
Ground Pork**  
Value Pack,  
3 lbs. or More



**Powerade  
Sport Drink**

Selected Varieties,  
32 oz.

**10/\$8**



**Diamond Head Soda**  
Selected Varieties,  
24/12 oz.,  
**Case Sale Only!**

**\$6.99**



**Best Yet  
Mayonnaise**  
Regular Only,  
30 oz.

**\$2.79**



**Tostitos  
Tortilla Chips**  
Selected Varieties,  
9-13 oz.

**\$3.79**



**Crystal Farms Cheese**  
Natural Slices, Shredded,  
or Chunk, Selected Varieties,  
6-12 oz.

**2/\$6**



**Coral  
Chunk Light Tuna**  
Selected Varieties, 5 oz.

**4/\$5**



**Fresh Baked  
Cheesy Bread**  
Regular or Mini,  
Selected Varieties

**\$3.59**  
EA.



**Custom Made  
Sandwich**  
Assorted Varieties

**\$6.49**  
EA.



**Heineken, Corona,  
Stella Artois,  
or Redd's Apple Ale**  
12 Pk. Bottles or Cans

**\$14.99**

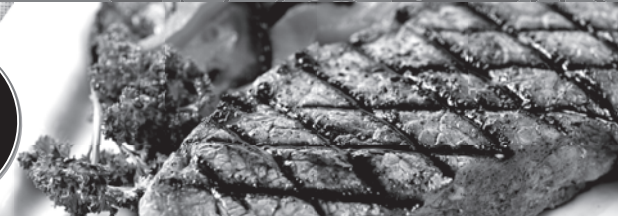


### Thursday

## Grilled Steak Lunch

7-8 oz. Steak, Rice, Tossed Salad, Drink

**\$8.99**



**Hawaii Beverage Fee** Hawaii Beverage Fee of 1.5¢ per can or bottle will be added to purchase price at checkout. An additional Hawaii Deposit Fee of 5¢ will be charged for all specially marked beverage containers.

Limit five units (mix/match) per purchase, unless otherwise specified. We reserve the right to limit quantities. No sales to dealers. Prices plus applicable state tax. Hawaii EBT cards welcomed.