



"E Ala Na Moku Kai Liloloa"

Carissa Moore from Haleiwa is the world's youngest and newest female world surfing champion. See story on page 14.



NORTH SHORE NEWS July 27, 2011 VOLUME 28, NUMBER 15



Laie Elementary Students Win First Place in National History Day Competition

(Honolulu, HI — July 11, 2011)— Kamaile Aluli (12), Kaylee Alana Miller (12), and Truman Spring (11), of Laie Elementary School won first place in the National History Day competition at the University of Maryland last

month. The elementary students received a gold medal and a \$1,000 cash prize for their Junior Group Website: "Between a Rock and a Hard Place: the Battle over Hetch Hetchy." (<http://44897478.nhd.weebly.com/index.html>)

(from left to right: Colleen Spring, Truman Spring, Kaylee Alana Miller, Kamaile Aluli, Serena Tulilolo)

continued on page 8

PRE-SORTED
STANDARD
U.S. POSTAGE PAID
Honolulu, Hawaii
Permit No. 1479

Hale'iwa, HI 96712
66-437 Kamehameha Hwy., Suite 210

PROUDLY PUBLISHED IN
Hale'iwa, Hawai'i
*The Surfing
Capital of the World!*



OFF da Island in South Africa

Long time Haleiwa residents Mike and Joyce Farrell took their grand-kids Kaikea and Mahealani to Africa in June and, of course, took along a copy of the North Shore News to remind them of the good times back on Oahu's beautiful North Shore. Here they are at the "South Point" of Africa. To learn more about our OFF da Island photo campaign turn to page 23.



Subscribe to the North Shore News

The North Shore News is delivered free to residents in Mokuleia, Waialua, Haleiwa, Kawailoa, Waimea, Pupukea, Sunset, Kawela, Kahuku, and Laie. A subscription is available for other cities on Oahu, Outer Islands, or Mainland U.S. or Alaska for just \$27.00 per year for 25 issues for delivery by standard bulk mail (2-3 weeks Mainland) or \$48 delivered by 1st class postage (3-5 days). You may subscribe by using check, money order or credit card (VISA, MC, AMX).

Mail North Shore News to:

Recipient _____

Address _____

City _____

Credit Card # _____

Expiration _____

Return this form with payment to:
North Shore News
66-437 Kam. Hwy. #210
Haleiwa, HI 96712

CLIP



Cholo's Homestyle Mexican Restaurant & Margarita Bar



Island Fresh Fish Tacos

Dine-In Burritos • Quesadillas • Nachos
Take-Out Enchiladas • Fajitas

637-3059

OPEN EVERY DAY
10:30 a.m.-9:30 p.m.



"Hawaii's Best Little Mexican Restaurant"

All Major Credit Cards Accepted

Located in the North Shore Marketplace
66250 Kamehameha Highway Haleiwa, Hawaii 96712



Sun Kissed Summer Specials

Going on now through July 31st



Coconut Crème Manicure & Pineapple Pedicure

Book these two popular treatments together and receive a 10% discount on both and receive 1 complimentary fitness class, a \$10 value.

50 minute Sun Kissed facial

This summer you can enjoy an all organic facial for *\$145, (usually \$170) and receive 1 complimentary fitness class.

Noni wrap

Noni is a hydrating fruit full of antioxidants that help to calm and hydrate skin that has been over exposed to the sun.

50-Minute Treatment for * \$120 and receive 1 fitness class pass.

Fitness Classes Summer Special

Kama'aina can enjoy our Fitness Classes for only \$5!

**GIFT CERTIFICATES
ARE AVAILABLE**

Contact Spa Luana at
TBRSpaLuana@TurtleBayResort.com
for Appointments or Inquiries.

SPA LUANA | 447-6868

* Prices are not inclusive of our 18% service charge and tax.

The Hale'iwa Family Dental Center, Ltd.



presents

"Comfort Dentistry"

including—

- Relaxation Glasses
- Television Glasses
- Caring Staff
- Special Medication to help you relax
- Laser Cavity Detection
- New Patients Welcome!

Your teeth are much too important to neglect.

Call: 637-9652
for your reservation

We're conveniently located behind First Hawaiian Bank
in the heart of Hale'iwa.



Theaters of Hawaii Presented by Lowell Angell

With Special Appearance by Captain
Haleiwa

The North Shore Chamber of Commerce's Historic Preservation Committee will launch its historic lecture series with an illustrated talk on the theatres of Hawai'i by noted Hawaiian film historian Lowell Angell. Mr. Angell, the author of the new book, *Theatres of Hawaii*, published by Arcadia Press will be joined by Captain Haleiwa who will discuss the histories of the Eiraku, Haleiwa, Kawailoa, Koga and Waialua Theatres. The book will be available for purchase at the event. Angell, who has been actively involved with local theatres for more than 45 years as a historian and preservationist will trace the rich history of Hawai'i's theatrical venues with rare archival photographs and little known details. Captain Haleiwa will recount his impassioned attempt to save the Haleiwa Theatre from the wrecking ball and showcase our own community's unique theatrical history. Please join us for a memorable evening celebrating our island heritage through Hawai'i's places of performance.

WHAT: Theatres of Hawai'i, Places of Performance in the Islands, 1847-1970, an illustrated talk presented by Lowell Angell with a guest appearance by Captain Haleiwa.

WHEN: Saturday, August 13, 2011, 7 p.m.

WHERE: Waialua Community Association (Haleiwa Gym across from Haleiwa Post Office).

ADMISSION: \$10 pre-sale and \$12 at the door (includes free popcorn)

TICKETS: Available at the Chamber office Monday to Friday, 1:00 to 5:00 p.m. Phone: 637-4558

Saccoccio & Lopez

ATTORNEYS AT LAW
Serving Haleiwa since 1984

*Bankruptcy
Personal Injury • Criminal Law
Landlord/Tenant
Traffic Offenses • DUI*

Family Law
*Adoption • Custody • Divorce
Paternity • Guardianship
Deeds, and Wills*

637-7611

VISA/MC Accepted
Above the Haleiwa Post Office



Paul & Nita

Quality Tile Crafts

"No job too big or small!"

Specializing in Ceramic Tile,
Travertine, Marble, & Slate

Kevin Wilson

cell (808) 864-4985 office (808) 638-8492
www.QualityTileCrafts.com Free Est.

We're shaking things up!

AUTO LOAN RATE OF **4.50% APR***

Steer yourself in the right direction and head to Waialua Federal Credit Union for an amazing deal on auto loans! We'll make it easy for you to save cash on your next vehicle purchase with loans that feature:

Rate of
4.50% APR*

Terms for up to
6 years
(seven if the financed amount is over \$25,000)

Financing for up to
100%
of the dealer invoice

Plus, our no-hassle loan application and fast approval process mean you'll be driving home your dream machine in record time! So call or stop by today to get pre-approved—and see firsthand how we're shaking up loans and driving down rates!



WAIALUA FEDERAL CREDIT UNION

(808) 637-6737 • (808) 637-5980 • www.waialuafcu.com

*APR=Annual Percentage Rate.



wanna learn?
NORTH SHORE
JIU-JITSU CLUB
try it out free!
men-women-kids
NorthShoreBJJ@GMail.com



Polynesian Treasures

Hawaii's largest selection of Polynesian handicrafts and Hawaiian inspired gifts.

North Shore Marketplace • Haleiwa, Hawaii
Open daily from 10 a.m. • 808-637-1288

PKB MY PET PHOTO CONTEST 2011



VISIT US



WWW.PKBSWEETS.COM
TO ENTER TODAY!

PAPER PHOTO ENTRIES
MAY ALSO BE BROUGHT
INTO THE BAKERY

SEND US THE BEST SHOTS OF YOUR FOUR-LEGGED, TWO-LEGGED OR NO-LEGGED ANIMAL FRIENDS ENJOYING TREATS FROM PAALAA KAI BAKERY AND WIN A FREE BONUS TREAT!

FIRST PLACE PRIZE: \$50 PKB GIFT CERTIFICATE
SECOND PLACE PRIZE: ONE DOZEN SNOW PUFFIES
THIRD PLACE PRIZE: ONE CREAM PIE OF YOUR CHOICE

ENTRIES MUST BE RECEIVED BY AUGUST 5, 2011. ALL ENTRIES BECOME THE PROPERTY OF PAALAA KAI BAKERY AND MAY BE USED ON OUR WEBSITE FOR PROMOTIONAL PURPOSES. WINNER WILL BE CHOSEN ON AUGUST 7, 2011.

Waialua Wins State Little League Title

by Gil Riviere, Waialua Little League President

Congratulations to the Waialua Little League Juniors Softball Team for winning the 2011 Little League Softball State Championship! The girls traveled to Hawaii Island to play a three game series against Gold Coast Little League, where they won the first game, 7-5, dropped the second game, 10-11, and finished strong in the final game, 10-1.

This is the first year softball was played in the Little League program on Oahu for many years and the future looks bright for expanding the program. Waialua Little League and Makakilo-Kapolei-Honokai Hale (MKH) Little League inaugurated the Oahu program by fielding teams in various divisions for girls aged 4 to 16.

The Waialua Juniors team will compete in the Western Regional Tournament in Marana, Arizona, beginning August 3rd, and play for a spot in the Junior League Softball World Series in Kirkland, Washington, from August 15 to 21.



Waialua Juniors Softball Team. First row: Chloe Pojas, Porsha Perez. Second Row: Elyssa Duarte, Johana Kapanui, Precious Palea-Enos, Shea Ekamrak, Kasey Auna. Third Row: Coach Kawe Chistian, Gelsey Duarte, Morgan Brailo, Shania Connors, Manager Dayna Sanchez, Shawn Kauwalu, Ariana Baldwin, Jade Gusman, Coach Chad Pohas

Travel expenses for 13 players, three coaches and chaperones are substantial, so the team is humbly seeking donations to make the trip possible. This is a unique opportunity for the young ladies to compete, to travel, to meet girls from other parts of the country, and to learn important character building lessons.

Waialua Little League is a §501(c)(3) non-profit organization, so one-hundred percent of your donation is tax deductible. A representative from the league would be happy to pick up your donation or you can write and mail a check to Waialua Little League, Box 803, Waialua, HI, 96791. Please note in the memo section, "Travel Fund."

Waialua Little League has grown from no majors or juniors teams and no tournament representation in 2008, to 147 players and two tournament teams in 2009, to 322 players and six tournament teams (two softball) this past season. The league subscribes to the Positive Coaching Alliance Philosophy rather than Win-At-All-Costs because winning takes care of itself when children are focused on positive effort rather than worried about failure.

On behalf of all of the players, coaches and volunteers who make up this winning program, thank you very much for your support. If you have any questions or want to arrange a pickup for your donation, please call Gil Riviere at 220-2280. The league website is Eteamz.com/WaialuaLL

At St. Michael School, Learners today...Leaders tomorrow!



67-340 Haona Street
Waialua, HI (Oahu) 96791
Phone: (808) 637-7772
Fax: (808) 637-7722

www.stmichaelschoolhi.com

Preschool - 8th Grade

Please call 637-7772 or email us
us at stmichaelhi@hawaii.rr.com
for more information.

We look forward to hearing from you.

Mrs. Deanna Arecchi
Principal



- ❖ Faith in Every Student
- ❖ Academically Challenging
- ❖ Safe & Friendly Environment
- ❖ Accredited WASC & WCEA
- ❖ After Care Program
- ❖ Professional Faculty & Staff



Are you at home with a Hawaiian child who
is 0 - 3 years old?

The Ho'āla Nā Pua Family and Child
Interaction Learning Program
is accepting applications for 2011-2012.

(4) sites 8:30 – 11:30 am (3) days/week

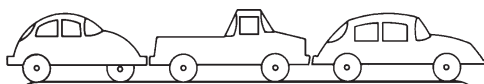
Building blocks for school readiness
through Hawaiian culture.

*Hānai i nā kamalei me ke aloha a me ke ahonui maoli i ulu lākou
me he kukui 'a 'ā mau i 'ō i 'ane'i.*

237-8500 / <http://www.namakalei.org> / info@namakalei.org

Sponsored by the Administration for Native Americans #NA908105
Building sustainability in native communities.

CAR WASH !



Starting at \$5

Saturday, August 13, 2011

8am to 2pm

Waialua Community Assoc. in Hale'iwa

Proceeds to benefit the North Shore Food Bank
Sponsored by the Once A Month Church
(to volunteer or donate call 342-3969)

OK to bring food donation too

PKB COOL OFF & CHILL OUT SPECIALS!

Summer's here and PKB wants to help you stay
COOL, CALM AND COLLECTED on the North Shore



Enjoy 10% OFF
any item in our
cold pastry and
deli section

PLUS ~ Purchase any two cold drinks and
GET ONE OF EQUAL OR LESSER VALUE FREE!

Offer only valid July 27 ~ August 2, 2011.
Not valid with other offers or promotions.

www.pkbsweets.com

Kahuku Village Association works to get families Fee Simple homes

Landowner wants condo management and eventual sale to the public

Kahuku Village Association, on behalf of the Kahuku Sugar Mill families living in older plantation homes, is working to arrange financing for its offer to purchase the land from the landowner, Continental Pacific, LLC, and then sell both the land and home to the each resident family fee simple.

Continental Pacific intends to convert the homes into a condominium property regime with a new property management company. The landowner warns tenants in a letter that this conversion to condo plan puts many families in jeopardy of being forced out. Half the homes will need to be moved because they are in a flood path. Many other homes will need expensive renovations to meet city codes and still others may not be financeable.

The landowner demanded that Kahuku Village Association terminate its leases to the families by July 31, 2011. The Association owns the homes and the master lease.

Kahuku Village Association efforts have included recent meetings with State Senator Clayton Hee, Representative Gil Riviere, City Council Chair Ernie Martin and Councilmember Ann Kobayashi. All are willing to help find permanent solutions for the families to continue to afford to live in Kahuku Village.

"Kahuku Village Association is very appreciative

of the efforts of our elected officials to commit their time and provide guidance to find a way for the families to continue to afford to live in these homes," said Deborah Sarsona, Kahuku Village Association manager.

The Kahuku Village Association was successful in efforts to convert previous Sugar Mill lands into fee simple homes for 107 families during the 1980s. The Association hopes to provide this same opportunity for these families.

More than 80 families have signed a letter to Continental Pacific that supports the efforts of Kahuku Village Association to represent them as their best opportunity to afford to remain in the village.

Continental Pacific has not made clear its long-term intentions for the property. Kahuku Village Association believes the landowner would listen to an offer to purchase because there are expensive costs, years of delay and significant water issues that need to be resolved.

"We are working very hard to put together an offer to Continental Pacific that will allow these families to buy their homes and land at terms they can afford," said Deborah Sarsona. "We are afraid the future looks very bleak for these families if we do not succeed."

continued from page 1

Nineteen students from Laie Elementary and Kahuku High and Intermediate School represented Hawaii in the National History Day competition held June 12 -16. Hawaii Reserves, Inc. (HRI) donated \$100 to each student to defray expenses for participating in the competition.

"It's thrilling when our students achieve at such a high level. We are extremely grateful to Hawaii Reserves and other donors for the support they give our kids," said Colleen Spring, Laie Elementary teacher and school coordinator for the competition.

"It's a great honor for our local students to represent our state by competing with the nation's leading youth. We're proud of the kids, their families and teachers; given the hard work and academic excellence that this achievement represents, we're glad to help." said Eric Beaver, president of Hawaii Reserves.

Hawaii Reserves has contributed to the program for the last few years. In the past five years teams from Laie Elementary and Kahuku High and Intermediate have placed in the top 14 nationally, including first, second and third place and have received "Best in State" awards.

This year's History Day theme was "Debate and Diplomacy: Successes, Failures, Consequences." Students worked throughout the year in a rigorous program that promotes a research-centered model for history and civics education. A recent study found that students who participate in National History Day develop a range of college and career-ready skills, and typically outperform their peers on state standardized tests in multiple subjects, including reading, science, math and social studies.

*If we do not feel grateful for what
we already have,
what makes us think we'd be
happy with more?*

Author Unknown



Glennel Warren, MBA
Financial Advisor
P 808.218.2633



Elsa Agdinaooy
Financial Specialist
P 808.927.2094

677 Ala Moana Blvd, Suite 705, Honolulu, HI 96813 | office 808.695.2123
toll free 866.252.7270 | fax 808.695.2121

Registered Representatives of Park Avenue Securities LLC (PAS) 7 Hanover Square, New York, NY, 10004. Securities products and services are offered through PAS, a registered investment advisor and broker/dealer. Financial Representative, The Guardian Life Insurance Company of America (Guardian), New York, NY. PAS is an indirect wholly owned subsidiary of Guardian. Wealth Strategy Partners is not an affiliate or subsidiary of PAS or Guardian. PAS is a member FINRA, SIPC GEAR 2010-7106

Wealth Management

Business Succession Plans

Educational Plans

Life Insurance

Long Term Care Planning

Disability Insurance



Official Sponsor

North Shore Food Bank

You can help feed the North Shore's homeless & hungry by donating non-perishable canned foods to the North Shore Food Bank located in the North Shore News office above the Hale'iwa Post Office.

637-3138

Prefer to contribute financially?

Check can be made out to:

Once A Month Church

P.O. Box 117, Hale'iwa, HI 96712

TOP 5 MOST NEEDED ITEMS

- Financial Contributions
- Canned meats or tuna
- Canned meats & soups
- Canned vegetables & fruits
- Canned beans

No donation is too small.

501c3 non-profit



Haleiwa Shopping Plaza
637-5095

NOW SERVING BURGERS MADE WITH

BIG ISLAND BEEF

HORMONE FREE - GRASS FED

PLUS \$2.00 Off with this Coupon

Some Restrictions Apply. See Restaurant for Details.
When Ordering Regular Priced Items. Good Anytime. One Coupon Per Person.
Can Not Be Combined with Other Discounts. Expires 09/30/2011.



**Direct From
Donovan
State Senator
Donovan Dela Cruz**

AlohaCare, founded in 1994, is Hawaii's third largest health plan. This year, they are launching their 2011 AlohaCare Community Conscience Award. Grants are available to projects that focus on health and wellness programs; access to care; and serve the aged, blind and disabled populations.

Six grants of \$5,000 each will be awarded. Organizations must be non-profit 501(c)3, excluding community health centers (CHCs), since AlohaCare currently supports these centers.

Projects must focus on one or more of the following categories:

Health and Wellness Programs: Focus on educating others on the prevention and/or treatment of asthma, diabetes, women's health, obesity (child and/or adult).

Access to Care: Benefit those who are unable to

seek or receive health care due to transportation, lack of health care coverage, language barriers, shortage of care in rural areas.

Aged, Blind and Disabled Population: Benefit the overall health and wellness of the kupuna or those who are medically fragile and medically disadvantaged. This would include senior health (glaucoma testing, osteoporosis testing and care, diabetes care, etc.); programs for the aged, blind and disabled.

An explanation of the project/event and how the organization intends to utilize the funds is needed and projects must be completed within a one-year timeframe.

I encourage non-profit organizations who may qualify for this grant to apply by September 1, 2011. This would be a great opportunity to create projects or events to address some of the above and call attention to the needs. There are never enough programs that can respond to all the challenges we face in trying to accommodate the needs of those who are unable to obtain the necessary services. If you think your organization may qualify and you have any questions, please contact AlohaCare at rmark@alohacare.org

Early head start home-base and center-base filling up fast!

There is still time to enroll your keiki in Early Head Start for the new school year!

Parents And Children Together (PACT) is a non-profit organization that offers free or low-cost early childhood education to low-income families and also to families with special needs through the Early Head Start (EHS) program. PACT-EHS is a high-quality prenatal and infant/toddler program for parents who are seeking the very best educational curriculum for their child.

In fulfilling our mission, PACT-EHS programs are designed to nurture and support parents and children (ages 0-3) by building on families' strengths and follows a creative curriculum to encourage participation in learning, growth, and development. We also focus on the health and well-being of expecting mothers and keiki by partnering with parents to ensure routine

medical and dental care is maintained.

Families living within the North Shore communities from Waiialua to Ko'olauloa have several nearby opportunities to participate in EHS including a Center-based classroom at Waiialua High School as well as a unique Children's Center at Ponds at Punalu'u. Both centers have full-day and part-day classes to best suit your schedule. We are also excited to offer a very valuable Home-based service to teach families how to create a wonderful learning environment in your own home!

Please contact us quickly to find out more about the PACT-EHS program, as the new school year begins on August 1st and space is limited! The application process is simple. Just contact our office at (808) 293-5530 or go to pacthawaii.org to apply today!

**We Pay You
\$100
CASH & FREE
TOWING
for unwanted vehicles
(complete)
636-7183
North Side Towing**


DRAFTPLANS HAWAII

- Over 10,000 floor plans & blueprints available for purchase online. Gather ideas for your own design.
- Drafting Service available for new home designs, additions, renovations, decks, fence, rock walls, etc.
- Free property specifications & title search info.

www.draftplans.com

Call for free estimates:
265-0035





WAIMEA VALLEY
is proud to present

Pūlama 'O Waimea

Saturday, August 13, 2011
10:00 a.m. – 4:30 p.m.

Pūlama 'O Waimea is an annual celebration of the rededication of Waimea Valley and all of the work in which has been done to protect and preserve this sacred land. It is a special event and we would like to share this day with you!

Come and enjoy the many activities that will mark this special occasion.

General admission: \$15 per person
Keiki under 12: \$7.50 per keiki.

Special Food and Beverage Menu on-site for purchase.
Pre-sale tickets available. Call 808 638-7766 for details.
There will be a special entertainment from 10:00 am – 1:00 pm.

– Artisans & Practitioners
ukulele making • lau hala weaving
feather work • weaponry demonstration

– Native Plant Sale –
Featuring: Hala, Koa, Loulu palms,
Kalo and much, much more!

– Crafts & Activities –
(For Keiki of all ages)

– Special Tours of – Waimea Valley
(featuring our talented staff)

www.waimeavalley.net

59-864 Kamehameha Highway North Shore of O'ahu across from Waimea Bay Hale'iwa, Hawai'i 96712 • Phone: 808 638-7766 • Fax: 808 638-7776

Waimea valley celebrates Pūlama`O Waimea 2011

Waimea Valley, located across from Waimea Bay is proud to present Pūlama `O Waimea, an annual celebration of the re-dedication of Waimea Valley, on Saturday August 13, 2011 from 9:00 am – 5:00 pm.

The day will be filled with fun activities for the entire `ohana to include: Hana No`eau (Arts & Crafts), Guided Walks, Kalo Workshop, Artisans/Cultural Practitioners, Entertainment, Botanical Plant Sale, and Ono food. The food will be provided throughout the day by Na Mea `Ono.

“We look forward to greeting our visitors and sharing the wonders of the Valley on this special day,” said Gail Chew Executive Director.

The following was dedicated to the Valley on a plaque, that was placed on a pōhaku (stone) at the entrance to the Valley and reads as follows: “On August 12, 2006, the ahupua`a of Waimea, moku of Waialua, O`ahu was re-dedicated following the acquisition of the Valley by the Office of Hawaiian Affairs, in partnership with the City and County of Honolulu, the United States Army, the trust for Public Land, and the state of Hawaii Department of Land and Natural Resources.

The acquisition ensures that, from this day forward, the cultural and natural resources of

Waimea Valley will be forever preserved on behalf of `Ōiwi Hawai`i (Native Hawaiians) and all people of the state of Hawai`i, the nation and the world, so that all who come here may learn from and celebrate the sacred land of our ancestors. E aloha `ia a pūlama `ia kēia `āina kapu no nā kau a kau. May this sacred land be loved and cherished for all ages.”

The Kalo Workshop (8:30 am -3:30 pm) This workshop brings experts, farmers and community members together to learn and share all about Kalo. The workshop is interactive with special guest speakers, breakout sessions and walking tours to the kalo gardens. The Waimea Valley Kalo Workshop is free and open to all interested individuals and groups.

8:30 am	Registration
9:00 am	Protocol, Introductions, Overview
9:30 am	Guest Speaker Weston Yap
10:00 am	Guest Speaker Anthony Deluze
11:00 am	Break Out Sessions
12:15 pm	Lunch, pounding demonstration, tasting
1:00 pm	Excursion/Identification of species with Jerry Konanui & Penny Levin

continued on page 12



Councilman
Ernie Martin
Serving You in District 2

Oahu's Real Property Tax Advisory Commission Now Set To Review \$47 Million In Exemptions

A number of states require a periodic review of its tax structure. Validated by voters in 1978, the Hawaii State Constitution was amended to require a systematic review of the State's tax structure by a Tax Review Commission. The recommendations of this Commission have emphasized fairness, efficiency and simplicity over the years and suggested changes have been incorporated into revisions of the state tax code. Because I felt that Oahu taxpayers should also have the same benefit of a periodic review of the City's tax policy, I introduced a resolution to establish an Advisory Commission to assist the Council by reviewing the City's real property tax system. Resolution 11-143 was adopted unanimously by the Honolulu City Council on June 3, 2011. The Commission consists of seven members nominated by Council members and appointed by the Council Chair. Each equipped with valuable professional experience and insight, Commissioners will conduct a bi-annual review of the city's property tax classifications, exemptions, credits and minimum property tax rates. The Commission will complete

its first review and provide recommendations to the Council by December 1, 2011. This will allow the City Council to evaluate the recommendations prior to the start of the Fiscal Year 2013 budget process. The Commission will soon establish their meeting schedule which will be noticed by the filing of an agenda with the City Clerk at least six days in advance. All meetings will be open to the public with public testimony encouraged and gladly accepted. Although the Commission is charged with a review of the City's real property tax system's classes, exemptions, credits and minimum property tax, the initial review will focus on exemptions. This is the largest source of tax relief to individuals and institutions such as current exemptions for historic residences and non-profit organizations that include hospitals, schools, child care centers, credit unions and churches. Exemptions are also provided to homeowners that are disabled, living on Hawaiian home lands or in low to moderate income housing. The City currently provides tax relief in the form of exemptions to over 162,783 properties totaling \$46,732,188 in uncollected tax revenue. This is certainly an area that merits the attention of a group of experts who can validate the need for such exemptions or make recommendations on possible changes to the City's basic tax policy. If you would like to participate in the review process, you are invited to contact my office at 768-5002 for information on the Commission's meeting schedule and instructions on how to submit testimony. Mahalo.

continued from page 11

Light refreshments will be available at registration. You may bring lunch or purchase something delicious at Nā Mea Ono. To register or inquire further please contact Jennifer Yagodich at (808) 638-5859 or jyagodich@waimeavalley.net.

Other activities during the day:

- 9:00 am - 9:30 am Re-dedication Ceremony at the Entrance of the Valley
- 9:30 am - 2:00 pm Botanical Plant Sales from Waimea Valley collection at the main Lawn
- 10:00 am - 4:00 pm Hawaiian Games with the Valley's cultural programs staff
- 11:00 am Hula Lessons at the Waterfall
- Noon - 1:00 pm Live music at lunch at the Main Lawn
- Ono Hawaiian Plate Lunch by Chef Kimo as well as refreshing shave ice
- Noon Hula Lessons at the Waterfall
- 1:30 pm Native Footsteps – Historical Tour of Waimea Valley
- 1:30 pm Hula Lessons at the Waterfall

2:30 pm Hula Lessons at the Waterfall
5:00 pm Pūlama `O Waimea Concludes

General Admission Fees to Waimea Valley:

Visiting Adult	\$15.00
Visiting Child	\$7.50
Visiting Senior	\$7.50
Kama`aina/Military Adult	\$10.00
Kama`aina/Military Child	\$5.00
Kama`aina/Military Senior	\$5.00
Individual Annual Pass	\$30.00
Individual Family Pass	\$60.00
FIT Group	\$9.00 (per person over 10 people reservations required)

Golf cart shuttle transportation available:

One-way	\$4.00
Round-Trip	\$6.00

For more information, please call (808) 638-7766 or visit www.waimeavalley.net.

Lokahi I Ke Kai

Benefit Event 2011

21+ \$10.
20 -13 \$15.

12 and under FREE

August 6th

6pm - 11:30pm

Turtle Bay

Kuilima Ballroom

Entertainment By:

Show Your Love

TTYM

Kalani Koa

SASHAMON

Live DJ's & MC's Lion of Judah & Rick Rock!

Silent Auction and Raffle!

Clark Little photos, PaddleSurf HI paddleboard,

Fine Jewelry, Ocean Sports Apparel/Gear & More!

TICKETS AVAILABLE AT SURF N SEA HALEIWA

In conjunction with the
North Shore Ocean Quest Stand-Up Paddleboard Race
(Waimea Bay to Haleiwa Alii Beach Park) on 8/6/11
Beach Entry 8-9:00a on race-day or entry blanks at
Surf-N-Sea and other Haleiwa Surf Shops.

After Party @ Bay Club - Free
Entry W/ Lokahi Ticket

In benefit/support of North Shore Youth Ocean Recreation &
Water Safety Programs and in celebration of
Haleiwa Surf Center's 35th Anniversary!





A Message From State Representative Gil Riviere

Aloha, North Shore. Here are updates on three important projects.

Laniakea Realignment - The Laniakea Realignment project team has extended the deadline to join its Public Advisory Committee until July 31st. This group will meet eight times, beginning in late August, to consider possible solutions for the terrible traffic situation we endure through Kawailoa. The application form and project updates are available at LaniakeaRealignment.com.

Since the May 25, 2011, Public Scoping Meeting held at Haleiwa Elementary School, the project team has been considering suggestions presented by the public, with an eye towards finding some plan to implement in the short or medium time frame while developing a long term solution. The traffic alternatives study is scheduled to take 18 months and we will continue to do everything possible to keep it moving forward.

Kawailoa Wind Farm - The State recently accepted the Environmental Impact Statement for the proposed 70 MW wind farm on Kamehameha Schools land in the hills of Kawailoa. The project is estimated to come online sometime next year and along with its 30 MW system recently built in Kahuku, First Wind LLC will have a capacity to generate up to 100 MW of power. Actual electricity

generated will probably average about 25-30 percent of capacity; the balance of electricity will still be generated by traditional power plants.

Reapportionment - As you will remember from civics class, both the Federal and State Constitutions require district reapportionment after the decennial census in order to balance population shifts. Between 2000 and 2010, most of the population growth on our island occurred in West Oahu. Another major change is that the Hawaii Reapportionment Commission recently decided to add non-permanent military personnel, visiting college students and others in this population count.

What all this means is that the typical House District should have approximately 27,000 residents. Our District 46 presently has nearly 43,000 residents, due to the inclusion of the military and BYUH student populations, so our district will be reduced in size. Meanwhile, many other districts will have to grow larger in area and population. The process of re-districting is now before the nine-member panel who will recommend maps at the end of August, for finalization in September. The City has its own process for Council Districts.

The public is invited to submit redistricting plans for Congressional and State Senate and House Districts. Details and the on-line program are at: <http://hawaii.gov/elections/reapportionment/>

Questions, suggestions or concerns about your neighborhood and our district are always welcome. Feel free to call us at 586-6380, send an email to RepRiviere@capitol.hawaii.gov, or visit us at the Hawaii State Capitol in Room 319.

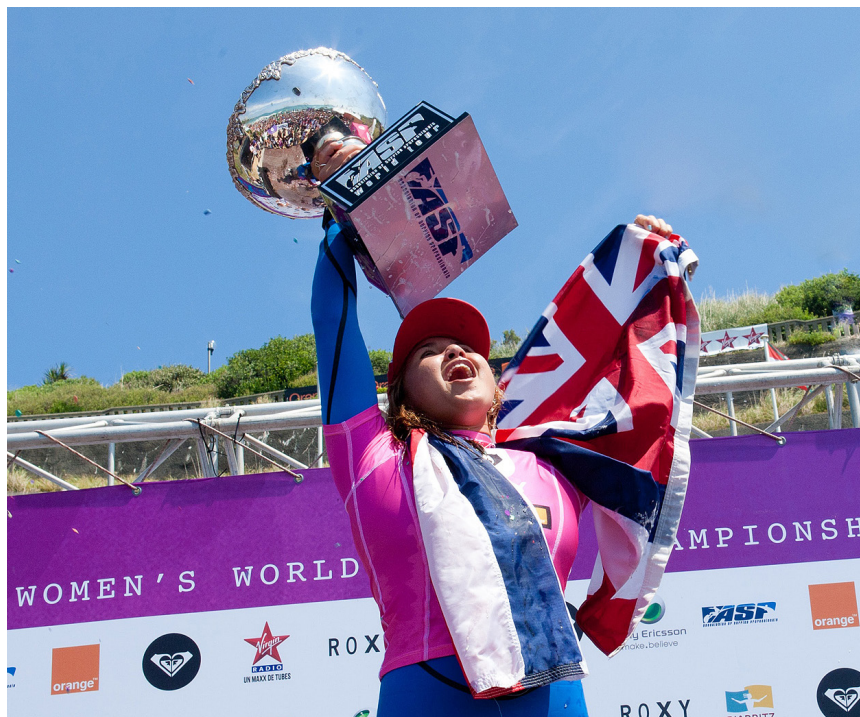


Image Credit: © ASP/ Aquashot Photographer: Bastien Bonnarne

Area teen is women's world surfing champion

Carissa Moore, 18, from Oahu's North Shore hoists the ASP World Title trophy after she made history at the Roxy Pro Biarritz becoming the youngest ever ASP Women's World Champion by advancing into the final at La Cote Des Basques, in Biarritz, France on Friday July 15, 2011. Moore sealed her maiden World Title crown when her closest rival World No. 2 Sally Fitzgibbons was eliminated during the semifinals. Moore went on to finish the event second overall behind event winner Stephanie Gilmore (AUS).

WHAT HAPPENS IF THERE'S NO MORE FOOD?

The North Shore Foodbank Needs Your Help!

Presently, our food pantry shelves are short on food for our hungry North Shore neighbors. Some are homeless but not all. Many are senior citizens on fixed incomes. Many are children and teens. Many are working poor and laid-off workers needing food assistance for the first time. You can make a difference for needy individuals and families who are struggling with hunger and have no where else to turn. Last month we distributed over 1,000 food bags. Each bag had 10-12 cans of food.

**If You Can Give We Need Your Help.
Now More Than Ever.**

TOP NEEDED ITEMS

- Financial contributions
- Canned meats/tuna
- Canned meals*
- Canned soups
- Canned fruits & vegetables
*spaghetti, chili, spam, corned beef, vienna sausage

DROP OFF

North Shore News
Hale'iwa Post Office
2nd Floor

Cash Donations payable to:
Once A Month Church
P.O. Box 1117
Hale'iwa, HI 96712

WHAT HAPPENS IF NO ONE HELPS?

808-342-3969

501c3 non-profit org.

Oceanside Chapel Service at Turtle Bay Resort



Every Sunday at 9 a.m. in the beautiful oceanside wedding pavilion.

Hosted by Pastor Ron Valenciana

- Non-denominational 45 min. service
- Traditional & Contemporary music
 - 15 minute sermon
 - Free gift to all first-time visitors
- All are welcome! Free validated parking

For more information call Pastor Ron at 342-3969.

*When church is pau, enjoy dining at the Palm Terrace, Hang Ten Pool Bar, or Lei Leis.



Free Family Movie Night at Waiialua Community Association



Rio

Fun for the whole family!
Saturday, August 19 at 7 p.m.
FREE ADMISSION

Drinks & Popcorn for sale



For more information, call 637-4606
www.WaiialuaCommunityAssociation.org



Surf Newz by Ace Cool

Howzit North Shore! Hope you all had a Happy and Safe 4th of July Weekend!

The surf has been near nigh non-existent on the North Shore this Summer. There were some little north swells, some easterly trade wind swell wraps from the windward side and even some west/south-west swells wrapping around from town and the west side. Sometimes those west swell wraps only barely show up on the buoy reports, and certain select and elect reefs. The south shore of Oahu has had swells and rumors of swells ever since Mother's Day in May in the true south shore tradition.

The was that one day in mid-June dubbed "Big Wednesday". The surf got up to 8 foot plus Hawaiian scale at places like Browns and Cliffs at Diamond Head. Many other outside reefs along the south coast of Oahu were also firing that afternoon and on the Thursday morning that followed!

Out on the ASP/WCT world tour for the top pro men... the latest venue up for grabs is "Super Tubes" at Jeffreys Bay in South Africa as the boys head into the \$425,000 Billabong Pro South Africa July 16-24. At this point in the main tour after the Billabong Pro Rio from May 11-22 in Number 1 place is Adriano de Souza of Brazil. Number 2 is Joel Parkinson of Australia. Number 3 is Kelly Slater of USA. Number 4 is Taj Burrow of Australia.

On the womens pro tour after the Rio Pro and heading into the Roxy Pro at Cote des Basques, Biarritz, France these are the rankings for the women on the ASP/WCT circuit after the Billabong Rio Pro May 12-16 worth \$120,000 and heading into the Roxy Pro worth \$110,0000 at Biarritz in France from July 11-17...Carrissa Moore of Hawaii is Number 1 on the ASP/WCT womens rankings. Number 2 ranked is Sally Fitzgibbons of Australia. Number 3 is Australian Tyler Wright. Australian Stephanie Gilmore is at #4 and Sylvania Lima of Peru is #5. Coco Ho of Hawaii is still hanging in there at #6 on the rankings.

I had a chance last month to meet and talk with Ultimate Fighter Chris Leben at his "Fight School Hawaii" Club and Gym above Puck's Alley near the University of Hawaii at Manoa. I also got to watch him train. I did NOT spar with him. This is top notch MMA/Kickboxing/Submission Grappling/Strength and Conditioning and more. The phone number is 8086265283. Call now and train with a UFC SuperStar. For more info go to "christhecrippler.com".

The 2011 "Hawaiian Islands Vintage Surf Auction" presented by Randy Rarick and his Hawaiian Surfing Promotions Company is held every two summers, usually in July. This year it will be on the 22nd and

23rd of July. The auction will be held at the Blaisdell. Check out the website for pre-registration and other insider sneak peeks at www.hawaiiansurfauction.com.

The 2011 North Shore Swim Series sponsored by Surf n Sea is ON again this year. The 1st event is the Aloha Salads 1 mile "Summer Sprint" July 2ND from Sunset Beach to Pipeline at 9AM. The Cholos 1.2 mile "Waimea Bay Swim" is July 16 at Waimea Bay at 9AM. The Jaco 1.6 mile "Chuns to Waimea Swim" is on July 30 at 9AM. The Jamba Juice 2.3 mile "North Shore Challenge" is on August 13 from Pipeline to Waimea Bay at 9AM. Information at 3728885 and/or www.hawaiiswim.com. ALOHA....Ace Cool!

The Salvation Army Family Store
- Wahiawa store only

**All clothing 50% off
every day and
\$.99 clothing specials
on Fridays**

open Mon-Sat 9am-6pm
subject to change



For more information contact:

Fred Deisser at 808-522-8425

Located at 322 Sumner St., Honolulu 96797

Across from K-Mart in town

GOT BOOKS?

Summer Cleaning

While you are doing your summer cleaning why not donate your new and gently used books to Once A Month Church. Your donation of books (fiction & non-fiction), magazines like National Geographic, and monetary donations will support our free lending library for homeless and low-income families.

Bring your donation to the
North Shore News office
located in the Haleiwa Post Office,
2nd Floor, Suite 210.

637-3138

Our next service at Hale'iwa Beach Park Sunday, July 31

We're the church that gives to you

Just a few of God's many blessings at our May 22 service. Joe Brown photos.



FREE CAR GIVE AWAY!
Register 8:30 a.m.-10 a.m.
Must be 18 & over. Must have valid Hawaii Drivers Lic. original, no copies or temporary.
MAHALO to Kokua in Kind & Lonestar Motorsports.



SUNDAY SCHEDULE
8 a.m.-9:30 a.m.
Register for FREE gifts
9 a.m.- 10 a.m.
Sunday School for keiki
9:30 a.m.-Pre-service give-aways
10 a.m.- 12 noon
Church Service
10-minute sermon

OUR 2011 SERVICE SCHEDULE

July 31	September 25	November 27
August 28	October 30	

Free shuttle from Waianae Coast and Waimanalo.
Call for pick-up times
342-3969

**From anywhere on O'ahu take the Circle Island city bus to Hale'iwa Beach Park
First 500 to register will receive a free cash offering!**

No church offering collected, instead, we give our money to you!

First 250 to register get a free bag of groceries.

10 FREE super-loaded grocery cart give-away.

FREE lunch for everyone at 12 noon!

Includes Waimea Valley Grill shoyu chicken, Uncle David Anana's local beef stew & much more!

• Bring a beachmat, lawn chair or blanket, and be sure to bring your appetite!

SURFERS, SAINTS & SINNERS ARE WELCOME!

OAMC is a community outreach made possible by many generous supporters and volunteers. If you would like to support or volunteer for the OAMC call 342-3969.

The OAMC is scheduled to meet on the last Sunday of every month (except May & December).

"There will always be poor people in the land. Therefore I command you to be open handed toward your brother and toward the poor and needy in your land." (Deuteronomy 15:11)

BULLETIN BOARD

SUNSET AUTO SERVICE, INC.

- Auto air conditioning specialist
 - Auto engine maintenance
 - Safety inspection station
- Walking distance to Wahiawa DMV

Call for appointment
622-5510

Matt Verdadero
207 N. Cane St., #1 Wahiawa



PUT YOURSELF BACK ON YOUR LIST

HAIR SPECIAL

Full Highlight and Cut \$100.00

GINA WALKER

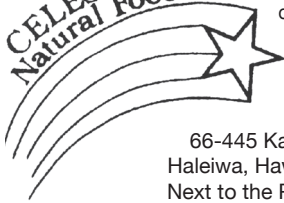
Hairdresser to the stars
from Malibu, CA

Cut and Highlight Master

Now at North Shore Nails Salon & Spa

375-3984

CELESTIAL
Natural Foods



Specializing in vegetarian foods, vegan foods, whole foods, organic food. Wheat free, dairy free, raw foods, gluten free. A complete selection of natural foods for 37 years. Make earth day, everyday.

Open 7 days.

Mon.-Sat. 9am-6pm.

Sun. 9am-5pm

66-445 Kam. Hwy
Haleiwa, Hawaii 96712
Next to the Post Office

808-637-6729 • 808-637-1922 fax

Statewide Hotline for Litter

1-888-592-2522

Callers need to provide:

1. License plate number
2. Make and model of vehicle
3. Date and time and location
4. What was thrown/blown

"THE BULLETIN BOARD THAT IS IN EVERYONE'S HOME"



2011 Triple Crown of Surfing Program Guide

- Official full-color local magazine •

Call today for best ad location

Ad deadline is Sept. 30

Reserve your ad space early!

- Hawaiian Pro
- World Cup
- Pipeline Masters

Published by North Shore News

342-3969



BULLETIN BOARD



Featuring the largest selection of certified organic produce on the North Shore.
 No panic...ours is organic.
 Open 7 days.
 Mon.-Sat. 9am-6pm.
 Sun. 9am-5pm

66-445 Kam. Hwy
 Haleiwa, Hawaii 96712
 Next to the Post Office
 808-637-6729 • 808-637-1922 fax



Robert Oakley Owner
 ASE Certified Master Mechanic Waialua, Hawaii
 Computer & Electrical Specialist (808) 330-0459

N-C PLUMBING & SUPPLY

Cont. Lic. No. C-8913



- RESIDENTIAL & COMMERCIAL SALES & SERVICE
- CONTRACTING & DESIGN • HOME PLUMBING SERVICE
- PLUMBING FIXTURES, HEATERS • FREE ESTIMATES

Nestor P. Calilao (Owner) Bus: 637-8662
 P.O. Box 769 Res: 638-5157
 Waialua, HI 96791 Cellular: 372-8718

email: nncplumbing@hawaii.rr.com

BOW WOW BUNGALOWS

Licensed Boarding Kennel
 North Shore, Oahu

Reasonable Rates • Ph. 637-2562

These Dogs Have Fun!



Waialua Bakery

New Hours:
 Open Monday - Saturday
 10am - 5:00pm

fresh sandwiches, smoothies, and baked goodies
808-341-2838

Fresh Fruits and Greens supplied by:

Farmer and The Baker llc
808-341-1992

Paradise Lua

Parties • Special Events
 Anykine Private or
 Public Functions



"Portable Sanitation at its finest"

690-8116

Munden Design & Build

Lic.#BC19632

Design • Plans • Permits • Construction
 Additions & New Residences
808 391-8616

Providing quality work since 1978



DR. PORTER TURNBULL

Chiropractic Orthopedist
 (808) 638-8740

Appointments available Mon.-Sat.
 (evenings by appointment)

- Industrial accidents & auto injuries
- Sports injuries • Spinal care
- Safe, Effective, and Gentle



"HONEST DEALS ON QUALITY CARS & TRUCKS"
 Established 1985

LINNE HOLMBERG
 Owner

530 Paiea St.
 Honolulu, HI 96819

Lonestarmotorsportsllc.com

Honolulu: 834-0808
 Fax: 834-6602
 Cellular: 222-4272

LIC. #AC 18275



GENERAL ENGINEERING CONTRACTOR

Full Service Sitework
 Contractor

Septic Systems & Tanks
 25 yr. exp.

Michael Cowper 638-7200
 cowperhawaii.com



The North Shore News is published every other Wednesday and mailed free of charge to all North Shore homes and businesses. Extra copies may be obtained at our office.

PRESS RELEASE POLICY: Submit press releases in person or by fax, mail or email to Editor, North Shore News, P.O. Box 1117, Haleiwa, HI 96712. Please type your releases and keep them shorter than 200 words unless they are of an unusual news interest. Releases should be viable news stories and are published on a **space available basis only**, with priority given to those received in our office first. You may attach photos. We are not responsible for the return of any photos. All materials are submitted at owner's risk. We reserve the right to edit and/or refuse all submissions including advertising.

EDITORIAL POLICY: We welcome articles and letters from our readers. Letters to the Editor are published on a space available basis only and preference is given to shortness of length, and quality of content. We prefer to run not more than one letter, per person, per 6 month period. Letters subject to edit.

Views expressed by our contributing writers and advertisers do not necessarily reflect the view of the management and staff of the North Shore News. All rights reserved. Reproduction in whole or part without permission is prohibited. © 2011.

PUBLISHER/EDITOR
RON VALENCIANA

TYPOGRAPHY
DOWNTOWN GENERAL STORE
BOOKKEEPING & CLASSIFIEDS
LINDA SEYLER

CONTRIBUTING WRITERS
RON VALENCIANA,
BUTCH HELEMANO,
NATY HOPEWELL

CLASSIFIEDS

♥♥Need a minister for a North Shore wedding? Hundreds of knots tied for happy couples on Oahu. Simple beach-side ceremonies to formal church or chapel services. I'll make your special day an extraordinary memory. Call & leave clear message with phone number & possible date, time & place. 342-3969. Also: Vow renewals, house blessings, baby luaus.

PAUMALU ELECTRIC
David C. Hancock
638-9054 / Lic#C18074

SHORE ELECTRICAL SERVICE
New Const-Remodels
638-0049 / Lic#C20777

FREE Pregnancy Test
Above Haleiwa Post Office
Call for hours 779-4685

LGR Construction
Remodel • Repair • Design
Drafting • Painting • Small Jobs
Affordable rates. 343-4453/Lic#26759

Dog/Cat Nail Trimming
at your home only \$15.00
Call Julie 637-5395

Aloha Computer
PC Repair/Virus Removal
Fax/Copy/Internet Access
372-2667 or 237-4558

Lawn Care For You
Mowing, Trimming, Light Hedging
Call Thomas 637-5839

Ross McGerty BC24080
349-6359 • 637-9539

From Waiialua to Sunset
Make Me the First Call
for Home or Rental Repairs
or Renovations

EXPERT ELECTRICIAN
Fans, emergency services, etc.
Jim Richards 371-9369

PARADISE PLUMBING INC.
New Const • Repairs • Remodels
808-368-1473 / Lic. 29856

Holoholo Mobile Screens
New Screens • New Frames
Screen Repairs • Pet Proof Screens
Sliding Screen Doors • Affordable Rates
Call Today 783-8764

BEACH PLUMBING & ROOTER
Over 30 years experience
Call Larry 637-6400

GOT SOLAR?
Save Money — Help the Planet
For info call **Jim Richards**
371-9369

Ohana Clean Up
Carpet Upholstery Cleaning
Pressure Washing
375-1814 • 979-5579

Handyman Services
Remodeling, Carpentry, Floors,
Concrete, all parts of Construction
Call Bob "The nicest guy in the
business" Ph. 282-2812

SULLIVAN PAINTING
Residential • Commercial • Int/Ext
Tommy **371-0998** Lic.#C31055

Pam's Poles
Pole Dancing Lessons
Beginners/Basic
638-7932

Massage by Nicole Marie
10 yrs experience MAT #8499
Summer Special \$40 per hour
499-9360

KA'ALA Cleaning
Home • Vacation • Interior
eco green • pet friendly
free estimate 780-3352

Down Country Party Rentals
LLC 429-2101
Bouncers, tents, tables, chairs,
shave ice, popcorn, cotton candy,
Karaoke machine.
www.downcountryns.com

NEW ZUMBA CLASS
Starting July 25,
Mondays 11am - 12pm
Location - WCA/Haleiwa Gym
Contact Janice at
JaniceT808@gmail.com
or 408-412-9353

J&L ServicesNorth Shore
Lawn care, pruning & more
Free estimates 673-1384
Pressure washing also

Bikram Yoga
Stretch, strengthen & stimulate mind & body.
All ages and levels.
Please call for class schedule
637-5700

SHIATSU • LOMI
Aromatherapy
Milica Barjaktarovic
Lic # MAT8348
351-0848
HumanRemodeling.com

N.S. Property Maintenance
Power wash, painting int/ext,
deck repairs, extensions,
fences, gates,
carpentry & remodels.
Maintenance, lawn & yard.
Chris 381-5213/638-0659

LEARN TO SWIM
AT THE
HAWAII SWIM
SCHOOL
ON THE NORTH SHORE
Developing swimmers since 1982
Haleiwa Rd. at Smiley Place
637-4863

SUBSCRIPTION RATES

If you live outside the North Shore area on Oahu, neighbor islands, or the mainland, you can subscribe to the North Shore News. Our annual subscription rate is \$27 for 25 issues delivered by standard bulk mail (2-3 weeks), or \$48 for 25 issues delivered by first class postage (3-5 days). Call our office for payment information at (808) 637-3138.

HOW TO CONTACT THE NORTH SHORE NEWS

Letters to the Editor, and other items submitted for publication consideration may be sent to us via:

MAIL: P.O. Box 1117, Haleiwa, HI 96712

E-MAIL: NShoreNews@aol.com

FAX: (808) 637-8862

PHONE: (808) 637-3138

For Advertising Rates,
call
637-3138

CLASSIFIED ADS

hawaiiweddingminister.com

342-3969

31 years experience

Offshore Plumbing, LLC

Commercial • Residential
• Septic • Plumbing Design

Mike Duenas, owner
Lic #C28113
630-1407

Fax: 637-7870 • Office: 371-3451
offshoreplumbing@yahoo.com

BOBBY'S BODIES

Tuesday evenings at 5:00 p.m.

• Body Toning

Friday mornings at 9:00 a.m.

• Cardio Pump/Fat Burner

For more info: call Bobby, owner of
BOBBY'S BODIES at 637-4150

Lisa Carley Skin Care

637-9400

lisacarley.com

67-292 Goodale Ave. #104
Waiialua Shopping Center

Windward Shoe Repair & Small Engine Clinic

Waiialua Shopping Center

Mon.-Fri. • 8am-4pm

234-8135

THE LAWN RANGER

Lawn Maintenance

no yard too hard

no lawn too far gone

We mow betta

258-6439 Dan Fatchett

Marianne
Abrigo, Properties

Specializing in -
North Shore
Real Estate

Ask for our list of available
properties and/or a
free market analysis.

Marianne M. Abrigo

"Realtor since 1974"

Office

637-3511

Fax

637-0777

Email

mabrigo222@aol.com

Automotive Services and Restoration

- Auto Body & Paint
- Detail & Shampoo
- Upholstery

Rick Estrada - 216-9419

HARVEY'S REPAIR, LLC

24 hrs Towing Service

Specializing in opening

locked car doors

Call any time 478-0333

GERMAN CAR SERVICE

Professional-Qualified
Technician

Call Gary

637-6800

B.E. CONSTRUCTION Dumptruck & Backhoe Services

Equipment, dirt, rock,
green waste hauling
in and out

DEMOLITIONS

BRUCE ESCHE 783-9510

Flower Designs by Yuki

Wedding • Birthday • Funeral
Party • and any other occasion

808-366-9104

www.yukiflowers.com

yukiflowers@gmail.com

NORTH SHORE TV PH. 637-4111

DAVID HELMS - OWNER

NESDA MEMBER

FACTORY TRAINED

REPAIRMAN

FOR LCD AND PLASMA TV'S

Mel's Cleaning Service

Mokuleia to Laie

Specializing in vacation

rentals & residential.

All jobs accepted.

11 yrs. experience, references
available. 330-7945

All Area Pool & Yard Service LLC

Pool & Spa Service, Landscape &

Maintenance. Free estimates &

reliable service. Levi Christenson

520-1155

AllAreaPoolandYardService@

hotmail.com

Next Issue - Aug 10, 2011
Deadline Date July 28, 2011

BEAR Engineering

Property Inspection

Septic System Design

Nathan M. Toothman, P.E.

Owner & Civil Engineer

990-7700

www.BearEng.com

North Shore Pumping

Cesspool & Septic Pumping

Complete Plumbing

Services, new & repairs

Lic. & insured #25567

638-0900 • 291-5089

HELP WANTED

BUSSERS/SERVERS

Pizza Bob's in Haleiwa is looking
for BUSSERS/SERVERS. Experi-
ence preferred. Apply in person
at 66-145 Kam. Hwy.

COOKS/KITCHEN HELP

Pizza Bob's in Haleiwa is looking
for kitchen personnel. Experi-
ence preferred, but will consider
training the right people. Apply
in person at 66-145 Kam. Hwy.

Retail Sales Surf & Sea

Hawaii's Ocean Sports Headquarters
is always looking for hard working,
energetic people to become a part
of our sales team. Good pay, bonus,
benefits. Ocean sports experience
and/or bilingual a plus. Apply in
person daily 9am-7pm
62-595 Kam. Hwy., Haleiwa

Farm seeking responsible
hard working individuals.

Work included but not
limited to harvest, prune,
clean & prep w/ flexible
hours. Leave a message.
Call 707-200-1375

FOR RENT

Gmd Fl. Professional/retail
Space 466sq/ \$1,382.75/month
Xcel Bldg. Haleiwa 779-7779

Haleiwa Town

2 bdrm, 1 bath, enclosed porch,
family room, kitchen, +(2) add'l
bedrooms or storage rooms and
carport. \$1800/month
Available immediately
Call 838-1202

FOR SALE

'94 Wht Plymouth
Voyager minivan
Solid, Safe, Reliable
\$1350/OBO
Chris 542-7862

MISCELLANEOUS

Haleiwa Town Center
Retail space for lease.
636-2222

NS Seventh Day Adventists
Saturdays 9:15-12:15
67-174 Farrington Hwy.
(WUCC, next to WHS)
Info: 638-8209

IGREJA EVAN. BRASILEIRA

Domingos 10:00 am

Quartas 7:30 pm

Sextas-Culto de Oraçao 7:30 pm

Voce e o nosso
convidado especial

Behind Hale'iwa Post Office
637-5566
Pastor Luiz • 638-2212

Recycle Plastic Caps & Lids

and help save seabirds

Recycle caps & lids

are being accepted at:

Goodwill Industries of Hawaii
Wahiawa

823 California Ave.

Monday-Sunday

9 a.m. - 5 p.m.

For information:

www.b-e-a-c-h.org/recycling

Ph: (808) 393-2168

FREE Hazardous Waste Disposal

Special handling

drop-off events

Bi-monthly, Saturdays,

9am-11:45am

For residential waste only and
by appointment only.

Next drop-off day:

August 6, 2011.

Call 768-3201 before Friday,

July 29,

to set up appointment.

www.opala.org

CLASSIFIED ADS

OFF da ISLAND

Are you leaving Oahu on vacation or business? Do you live on a neighbor island, the mainland or foreign country and subscribe to the North Shore News? Send us a photo of someone in front of a sign or landmark holding a copy of the NSN. Email your photo along with the person or persons' name, community of residence, telephone number and photo location to: NShoreNews@aol.com. Or, mail to OFF da ISLAND Photo, North Shore News, P.O. Box 1117, Hale'iwa, HI 96712. We cannot return photos so please send us a copy. Photos received become the property of NSN. Preference and priority will be given to emailed photos.

Waiialua Farmers Co-op Market

Fresh Waiialua-grown produce plants & more at the Waiialua Sugar Mill

Sat. 8:30 a.m. - 2 p.m.
Wed. 4:30 p.m. - 7 p.m.

BEACH CLEAN UP

Chun's Reef - 10 a.m.

637-2211

Last Saturday of every month
adoptabeachhawaii.org

2011 North Shore Swim Series Surf N Sea

Chuns to Waimea Swim

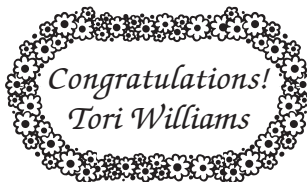
July 30 • 1.6 miles
Chun's Reef to Waimea Bay

North Shore Challenge

August 13 • 2.3 miles
Pipeline to Waimea Bay

Information: 372-8885
hawaiiswim.com

Sunset Beach Christian School
Now Enrolling
Gr. Kindergarten-6th
CALL 638-8274



Waiialua Library Book Sale
August 20

Statewide Hotline for Litter

1-888-592-2522

Callers need to provide:

1. License plate number
2. Make and model of vehicle
3. Date and time and location
4. What was thrown/blown

Celebrate Twelve Tribes Int'l - 20th Anniversary

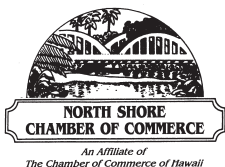
July 30th: 5pm - 9pm
North Shore Marketplace
Free Admissions
Fashion shows, music, food & fun.

Outreach Services

Persons with Disability
Advocacy Benefits Housing
HCIL 54-113 Kawaipuna St.
Hauula, HI 96717
Ph. 293-9775 or 293-9777

Thank you to the kind person who pulled my brown & white dog to the side of the road & covered her with a towel. This was on Kam Hwy. near Ili'ohu St. on July 4, 2011. I appreciate your compassion.
Debbie Aldrich
Hale'iwa

Save Sea Birds Recycle Caps
www.b-e-a-c-h.org



Business Services Center

Fast & convenient fax, copy, scan, computer/internet, laminate, etc.
Across from Haleiwa post office.
North Shore Chamber of Commerce
637-4558 or 342-8557

REUNIONS

The NSN is happy to publish your school or family reunion Free of charge.
Email your announcement to NShoreNews@aol.com.

2011 North Shore Ocean Quest Stand-Up Paddleboard Race
Saturday, August 6, 2011
9:30 a.m. Waimea Bay

North Shore Farmers Markets

Haleiwa: 9 a.m. to 1 p.m. Sundays, at traffic signal on the old Kamehameha Hwy at the bypass road.

Waiialua Sugar Mill: 8:30 a.m. to noon
Saturdays & Wednesdays 4:40 p.m. to 7:00 p.m.

North Shore Country Market: 8 a.m. to 2 p.m. Saturdays, Sunset Beach Elementary School, 59-360 Kamehameha Hwy.
Laie: 11 a.m. to 2 p.m. June 24, July 8 and 23, Brigham-Young University-Hawaii, 55-220 Kulanui St.

This August veterinarians are offering lowcost microchipping of pets for a flat rate of \$10, thanks to a partnership with the Hawaiian Humane Society. Wahiawa Animal Hospital 621-7000, is a participating veterinary clinic.

Please Report Stranded Sea Turtles

Call 983-5730 • Mon.-Fri., 7am-4pm
288-5685 pager weekends, holidays
587-0077 and after hours
Suspected Law Violations
541-2727 or 800-853-1964
NOAA Fisheries DLNR-DOCARE

BON DANCE

WAIALUA HONGWANJI MISSION
SAT., AUGUST 6; 7:30pm
Located past the Waiialua Sugarmill

LILIUOKALANI PROTESTANT CHURCH ANNUAL LUAU

SAT., AUGUST 6, 1pm - 4pm
Public Welcome

Save Sea Turtles Use Reusable Bags
www.b-e-a-c-h.org

POLO
Mokuleia Polo Field
Sunday, July 31
12pm-5pm

2011 HIKING SERIES WAIMEA VALLEY

Saturday, August 6
8:30am-9:30am
Waimea Valley Visitor Center
For Information Call (808) 638-7766

BOOK CLUB

The Waiialua Book Club
meets at the library on the fourth Thursday of the month at 9:30a.m. The book selection for August is LIFE by Keith Richards. Everyone is welcome.

Artist Reception

The opening night reception for "ART 2011" will be Thursday, August 11, from 6:30 - 8:00 p.m.

The Friends of Waiialua Library sponsors this adult art show annually and never seems to have trouble finding North Shore artists to exhibit their talent for our pleasure. The following artists will offer insight into the artistic process of their work:

Linda D. Cox
Momi C. E. Green
Cheryl Hachiya
Chip Lane
Mindi Mulherin
Christine Pagano
Richard Roberts

Please join us on the library lanai at 6:30 for ono home-made deserts to be served with hot coffee and iced tea. If a sign language interpreter or other special accommodations are needed, please call the library ten days in advance at 647-8268.



MALAMA MARKET HALEIWA:
OPEN DAILY 7 AM-9 PM
808.637.4520

MALAMA MARKET MAKAKILO:
OPEN DAILY 6 AM-10 PM
808.672.9955

Valid Dates:
7/27/11-8/2/11

Rainier Cherries **\$4⁹⁹**
16 oz. EACH
or **Blueberries**
18 oz.



Hinode No. 1 Calrose Rice **\$11²⁹**
20 lb.



Lay's Kettle Chips or Santitas Tortilla Chips **\$2²⁹**
Selected Varieties, 8.5-14 oz.



Boneless Pork Sirloin Chop Value Pack **\$2⁷⁹**
PER LB.



Dannon or Meadow Gold Yogurt **5/\$4⁵⁰**
Selected Varieties, 6 oz.



Dasani Water **\$4⁹⁹**
24/500 ml.



Freshly Made **\$8⁴⁹**
PER LB.

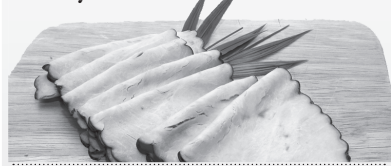
Ahi Poke
All Varieties



Dreyer's Ice Cream **2/\$7⁵⁰**
Selected Varieties, 48 oz.



Boar's Head Honey Maple Turkey Breast **\$10⁴⁹**
PER LB.



Gatorade **88¢**
Selected Varieties, 32 oz.



Cottonelle Bath Tissue **\$4⁹⁹**
Double 6 Roll



8 Piece Fried Chicken **\$8⁹⁹**
EACH
2 Thighs, 2 Breasts,
2 Drumsticks
and 2 Wings

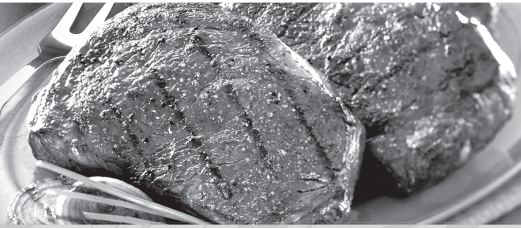


Heineken, Corona or Stella Artois **\$12⁸⁸**
12 Pk. Bottles



THURSDAY

INCLUDES:
7-8 oz. Steak
Rice • Tossed Salad • Drink



Grilled Steak LUNCH
\$6⁹⁹



Hawaii Beverage Free of 1¢ per can or bottle will be added to purchase price at checkout. An Additional Hawaii Deposit fee of 5¢ will be charged for all specially marked beverage containers.

Limit five units (mix/match) per purchase, unless otherwise specified. We reserve the right to limit quantities. No sales to dealers. Prices plus applicable state tax. Hawaii EBT cards welcomed.