

"E Ala Na Moku Kai Liloloa"



3rd Annual Turtle Bay Golf Fest

(see page 4)

NORTH SHORE NEWS

July 25, 2012

VOLUME 29, NUMBER 15



**Hale'iwa Arts Festival
July 21-22, 2012 - Hale'iwa Beach Park**

The Hale'iwa Arts Festival Fifteenth Annual Summer ArtFest attracted many North Shore residents as well as visitors. The Hale'iwa Arts Festival event activities included 128 visual artists with original works, limited and

open editions, both traditional and contemporary, in oil, acrylic, ceramic, photography, sculpture, watercolor, fabric, jewelry and glass as well as other media. Their art was on display for viewing and available for purchase direct-

ly from the artists. The Hale'iwa Summer ArtFest also included performance arts, cultural history tours, art demonstrations and children's activities. Friends and families spent a special day at the Hale'iwa Arts Festival.

PRE-SORTED STANDARD U.S. POSTAGE PAID Honolulu, Hawaii Permit No. 1479	Hale'iwa, HI 96712 66-437 Kamehameha Hwy., Suite 210
--	---

PROUDLY PUBLISHED IN
Hale'iwa, Hawai'i
*The Surfing
Capital of the World!*




OFF da Island at Kandahar, Afghanistan

Waiialua resident Lauris Trimble is currently in the US Army and deployed in Kandahar, Afghanistan for one year with the 209th ASB, 25th Combat Aviation Brigade from Wheeler Army Airfield. On her down time, Lauris enjoys reading the North Shore News sent to her in care packages from her dad Richard Trimble. Lauris is reminded of the good times back on Oahu's beautiful North Shore. For more information on our OFF da Island photo campaign turn to page 22.

Video * Media
*** Communication ***
 Banzai Productions
 Produces all
 Video & Media Needs
 Special Rates on
 Commercial Video
 Through July 2012
 25 Years of Experience
 in Production

808-781-2535 



Relaxed sunset dining...

Happy Hour
 Monday ~ Friday
 3 p.m. ~ 6 p.m.
 Bar & Bar Area

Lunch 11 a.m. to 4:30 p.m. • Dinner 4:30 p.m. to 9 p.m.
 Sunday Brunch 9 a.m.

*Jameson's by the Sea
 located on Oahu's Northshore
 at 62-540 Kam Hwy*

Info and Reservations
 808.637.4336

We've Moved
 66-037 Kam. Hwy., Ste. 3
 Haleiwa, next to Growing Keiki

Saccoccio & Lopez
 ATTORNEYS AT LAW
 Serving Haleiwa since 1984

*Bankruptcy
 Personal Injury • Criminal Law
 Landlord/Tenant
 Traffic Offenses • DUI*

Family Law
*Adoption • Custody • Divorce
 Paternity • Guardianship
 Deeds, and Wills*


 Paul & Nita

637-7611
 VISA/MC Accepted

YOU NEVER
KNOW WHO'S
GOING TO
DROP IN.

surfer [THE BAR]

It's more than a bar. It's an original.

OPEN DAILY @6PM - CHECK OUT THE LINE UP >>

- JUL 25** MOVIE NIGHT >> **The Last Paradise**
The true saga of surfing in New Zealand with Filmmaker Clive Neeson.
Doors open at 6p – Movie at 7p.
\$10 at the Door. \$8 Kama'aina.
- JUL 26** TALK STORY >> **RAPA NUI'S HAUMOANA**
with host Jodi Wilmott.
Doors open at 6p – Show at 8p.
*Donations accepted at the door.
- JUL 28** **K-Von COMEDY SHOW**
Doors open at 6p – Show starts at 8p.
Tickets are available at the Concierge:
\$15 presale or \$20 at the door.
- AUG 17** LIVE MUSIC >> **KAPENA**
Doors open at 6p – Show starts at 9p.
\$10 tickets available at the Concierge
or at the door.

**COME CHECK OUT OUR NEW MENU
& DRINK SPECIALS FEATURING
\$4 BUD LIGHTS & \$5 IMPORT DRAFTS.**

SUNDAYS. Karaoke Night >> Starts at 8p | Non-Ticketed Event.
MONDAYS. Hawaiian Music >> Show starts at 7p | Non-Ticketed Event.
TUESDAYS. Kanikapila >> Show starts at 7p | Non-Ticketed Event with Drink Specials
WEDNESDAYS. Wahine Wednesdays >> Ladies in Free all Night.
THURSDAYS. Talk Story Thursdays >> Surfing legends and their tall but true tales

Space is limited, we suggest ordering tickets for shows in advance.
 Surfer, The Bar is 21+ after 10p.
 Visit SurferTheBar.com for our full event calendar and updates.
 *\$5 charitable donation suggested for Talk Story Nights.

**FIND OUT
WHO IS
DROPPIN IN
THIS WEEK >**





GOLF OAHU'S FABLED NORTH SHORE

Register for Turtle Bay Golf Fest - July 28th

3RD ANNUAL TURTLE BAY GOLF FEST

Turtle Bay is proud to have our 3rd Annual Golf Fest Saturday, July 28th. The day includes a demo day in the morning and an 18-hole tournament in the afternoon. This is a great opportunity to test out the newest equipment from golf's top manufactures including Titleist, Taylormade, Callaway, Nike, Oakley, Puregrips, and Bettinardi. The Demo Day will run from 8a-12p on our Fazio Driving Range. We will also have a huge sidewalk sale, hourly lessons from PGA Professionals, along with a putting contest. At 12:30p we will have a tournament on our Fazio Course. Format will be a 4-person scramble using a modified handicap. A portion of the proceeds will benefit the Kahuku High School Golf Team. Entry for the event is \$75/person and includes golf, cart, tee gift, and pupus after the round. Prizes will be awarded for the top teams and for special on-course events.

GOLF TIP FROM KYLE K.: A KEY TO LOWERING YOUR SCORE

The importance of putting and the immediate impact a player can see in their scores is not a secret and that is why there are so many lessons and tips on this part of the game. When putting there are many things to consider, but I want to focus on a simple factor that will immediately impact your golf game and quickly help you improve your scores. That factor is distance control while putting. I have found that when most people struggle with their putting they often have problems with distance control, which results in unwanted strokes and a higher golf score than anticipated.

The key to developing distance control is developing "feel," and the key to developing "feel" in your putting game is practice. For many golfers, putting is neglected in their practice routine, and that is an obvious reason why they struggle with their putting. Other people, however, do not effectively practice, and that is why they struggle - even though they are spending a good amount of time and effort. During your putting practice, it is important to always use a portion of your time to practice distance control. Listen to music, play a game with a friend, reward yourself for an accomplishment, and do drills to keep you engaged in the task.

One drill that I suggest is to use some type of marker (tee, ball marker, coin etc.) to indicate the distance you desire to hit a putt. Drop multiple balls and continue hitting putts to the marker until you are comfortable hitting the ball that distance. Once comfortable move backwards and hit the putts from a farther distance. See how far you can go back, vary the distances from long to short, and continue to challenge yourself while doing the drill. This drill will really help you to develop your distance control while putting and it will help you lower your score on the golf course.





**Direct From
Donovan
State Senator
Donovan Dela Cruz**

Whitmore Village Agricultural Development Plan

Over the years we have heard time and again about the diversification of the agricultural industry, food sustainability and security, and the importance of preserving agricultural land. Unfortunately, a lack of vision, planning, coordination and not making the proper investments have left the industry limping along the last several decades. We have not restructured government to appropriately respond to the globally competitive situation that places Hawaii farmers at a severe disadvantage. Due to evolving Federal regulations and an increasing amount of low-priced imports from all around the world, some local farmers have abandoned their efforts and younger generations feel the situation too overwhelming and difficult to pursue.

Now is the time for us to show and execute leadership in creating a successful revenue-generating model for agriculture that we can later template all across our State. Coined the Whitmore Village Agricultural Development Plan, this initiative will enable us to revitalize a disadvantaged community, create jobs at every level in agriculture, and hopefully bring back agricultural dominance to Central Oahu. With thousands of acres of active agricultural land becoming urban, we must have a comprehensive and strategic plan to turn thousands of acres of fallow agricultural land into active and productive farms. This past session, the legislature took steps to build upon the future acquisition of the Galbraith Estate.

The Whitmore Village Agricultural Development Plan is an effort to help revitalize the economy and agricultural production in Central Oahu, once a region that led the agriculture industry. The main objectives are to:

- demonstrate that farming is an attractive profession, agriculture is revenue generating, and a career in agriculture will allow a new generation of farmers the ability to live and work in Hawaii;
- create synergy and scale resulting in reduced costs of farming and ensuring that supporting systems and activities become efficient; and
- develop a comprehensive, economically sustainable plan for agriculture that includes farms, packing and processing facilities, distribution systems, infrastructure and water, agri-tourism opportunities, public-private partnerships and long-term investments.

This plan includes the Agribusiness Development Corporation (ADC), Office of Hawaiian Affairs

(OHA), private sector partners and local farms.

Although the purchase of the 1,723 acres of Galbraith Estate is not concluded yet, there were a number of measures introduced to ensure a comprehensive approach to this regional concept called the Whitmore Village Agricultural Development Plan.

The State Legislature included \$3.6 million in Act 106 (2012), the capital improvements budget, for the purpose of purchasing the 24-acre parcel in Whitmore Village currently owned by Castle and Cooke. The property was a hub for Dole Pineapple for more than 70 years and existing infrastructure and land entitlements on the property allow for the re-establishment of the functions that were once there. This parcel, situated only minutes away from the 1,723 acres of Galbraith Estate, will be the center of packing, processing, storing, and administrative functions for the Whitmore Village Agricultural Development Plan. In essence, an agricultural commercial development park would be created. It will be a "hui" of public-private partnerships and could also become a center for agricultural technology. The state can attract software and manufacturing companies that develop technology and equipment for farmers in the area and across the state.

The long term goal for the Whitmore Village Agricultural Development Plan is to demonstrate that agriculture can be profitable, therefore, truly sustainable.

Are you . . .

- ~tired of waiting days or weeks for your vehicle?
- ~tired of wrong diagnosis?
- ~tired of taking your vehicle back again?
- ~ paying too much?

Give us a call . . . we can help!

ROB'S

**Auto Repair Service
Moped & Small Engine
Repair**

- Licensed and Certified ASE Master Mechanic
 - Computer and Electrical Specialist
 - We work on all Makes and all Models

Serving the North Shore

(808) 330-0459



Meet The Artist
HEATHER BROWN

Art Show

SATURDAY, JULY 28TH [3-7PM]

WYLAND GALLERIES

**NORTH SHORE MARKETPLACE
66-250H KAMEHAMEHA HWY.**

HALEIWA, HI 96712 / 808-637-8729




**THE BEST DEAL IN THE ISLANDS IS,
IN FACT, THE ISLANDS.**

\$15 *Go Native*
ADMISSION
(reg. \$49.95)

HOT SUMMER DEALS
for Hawai'i residents

\$25 **HĀ** *Evening Show*
BREATH OF LIFE & *Island Buffet*
(reg. \$71.90)

Take advantage of our two Hot Summer Deals at the center. Go Native with our \$15 admission to our villages and day activities. Or see the "HĀ: Breath of Life" evening show with an island feast buffet for just \$25. For details, call 293-3333.

 **POLYNESIAN**
CULTURAL CENTER
PCCkamaaina.com

Some restrictions apply. HĀ show based on space availability. Must have valid Hawaii ID. Offers available 6/1-8/31/12. Closed on Sundays.



kaleimaeole Handcrafted Jewelry

Visit us at the North Shore Country Market
(Sunset Beach Elementary across from Pipeline)
Saturdays from 8-2
www.96712jewelry.com

Beautiful handcrafted jewelry from Oahu's North Shore. Each piece is handmade and unique, using fine silver, gold fill, precious and semi precious stones, Tahitian and freshwater pearls, suede, leather, beach glass and shells. Our silver comes from reclaimed sources and is not mined.

Our collection is on display and available for purchase at the North Shore Country Market and other venues on Oahu.

See our website for a complete calendar of events.

Photos by Val Loh



SIX SPECIAL NIGHTS

MONDAY \$2.95 BEER BOTTLES & DRAFT	TUESDAY \$5.00 OFF PIZZA REGULAR OR LARGE	WEDNESDAY SALAD NIGHT 1/2 OFF SALADS
---	--	---

PIZZA BOB'S

THURSDAY \$3.95 NIGHT \$3.95 SLICES, SALADS, MAI TAI'S, WINE & BEER	FRIDAY NIGHT \$7.50 BURGER & FRIES	SATURDAY \$4.50 NIGHT \$4.50 SLICES, SALADS, MAI TAI'S, WINE & BEER (or less)
--	--	--

Dine In Only - 4:00 PM Until Closing - Haleiwa Town Center - 637-5095

wanna learn?
NORTH SHORE
JIU-JITSU CLUB
try it out free!
men-women-kids
NorthShoreBJJ@GMail.com

XCEL

CORE FILES

ALBEE LAYR GREG LONG RYAN SEEBACH JEREMY JOHNSTON MIKE GLEASON

A BEHIND THE SCENES LOOK AT 5 SURFERS
WHOSE STORIES DEFINE COMMITMENT
FROM JAWS TO JERSEY
AND BEYOND

WATCH THE SNEAK PEEK HERE

SERIES PREMIERE
AUGUST 1, 2012
FACEBOOK.COM/XCELWETSUITS

COMMITTED TO THE CORE

Thirty Years
1982 2012

Experience New Zealand's
Top Female Vocalists.

**MAISEY RIKA
& RIA HALL**
IN CONCERT

Friday, August 3rd at 8pm – Gateway Complex

See two of New Zealand's top artists—Maisey Rika and Ria Hall—live in concert. It's August 3rd at the Polynesian Cultural Center during our Te Manahua Maori Cultural Competition. For tickets, call 293-3333.

 POLYNESIAN
CULTURAL CENTER
PCCkamaaina.com

AFTER-SCHOOL PROGRAM FOR GRADES K-8

TUTORING / HOMEWORK / TEST PREP
ALL SUBJECTS: Math, Reading, Writing
SNACKS / ART / MUSIC / GAMES

Located at the Kahuku Community Center
New Semester Starts July 30, 2012

Enroll TODAY!

E-Mail: learningplus@hotmail.com



Waialua - The Saga of the North Shore

Chapter 15 - The Discovery

By Kalewa

After burying the scant remains of Captain Cook in Kealakekua Bay, the HMS Resolution, now under Captain Charles Clerke and the HMS Discovery under Lieutenant James King sailed through the newly named "Sandwich Islands" with the plan of load- ing enough food and water to make one more probe northward in search of the illusive Northwest Pas- sage. Aboard the Discovery was the ship's surgeon David Samwell. Those three sailors left us journal entries chronicling the first known visit by English- men to the North Shore.

The ships traded on the run around Kahoolawe, Lanai and West Maui. On Wednesday, Febru- ary 24th, 1779 surgeon Samwell wrote: "...Canoes came off to us from the different Islands around us with Hogs, breadfruit & roots to sell. The News of the affair of Kerag-egooa had reached them before our arrival, for that was almost the first thing they mentioned to us....The Girls who came with us gave them the particulars of that Transaction to which they listened with great attention and were very inquisitive about every Circumstance; as far as we could understand them the Girls told them that we had come off with the worst, having had our Chief killed, & their Numbers being of little consequence when compared with the Loss of so great a Man."

Two days later he continued: "We are running along the Island of Morotai with a large island to leeward of us in sight called O-ahoo...The Girls, sev- en in number...are well pleased with their Situation on board the Ship...they spend most of their time in singing and dancing, they do not seem to mind where we carry them to and would very willingly go

with us to England...."

The next day, Saturday, the 27th: "This morning we are bearing down before the Wind on the Island of O-ahoo.....This Island has a pleasant Appear- ance, having much wood upon it; the Land is gen- eral high. The girls tell us the Island produces plenty of breadfruit, Cocoa nuts, Plantains, Yams, Taroo root & sweet Potates & Sugar Canes and that there are many hogs upon it. In the afternoon saw the appearance of a good anchoring place in an open road with a fine Sandy Beach, on which stood many Towns, with green Platts behind extending to the Hills which rose at no great distance off; as we were sailing along we saw three or four of their burying Places called E-heiaw with a kind of high obelisks erected on them of wood, & on the Pales which en- closed them. We could see with our Glasses many human Skulls...Between two and three o'Clock both Ships came to an Anchor about 3/4 of a mile distant off shore, before the mouth of a small River.

Captain Clerke picked up the story aboard the Resolution: "I stood into a Bay...which was far the most beautiful Country we have as yet seen amongst these Isles, here was a fine expanse of Low Land bounteously cloth'd with Verdure, on which were situate many large Villages and extensive plan- tations; at the Water side it terminated in a fine slop- ing, sandy Beach...We Anchor'd..."

It was from this anchorage that Midshipman Bligh drew the first profile of the North Shore, shown here as the stage was set for the first landing by the Englishmen after the untimely death of Cap- tain Cook.

MY VISION

- Expand Local Agriculture
- Strengthen Education
- Improve our Economy
- Advocate Responsible Environmental Policies

LAUREN KEALOHILANI

CHEAPE

FOR STATE HOUSE 

Dear Neighbor,

My family came to Hawai'i in 1859 and I am the 6th generation to have been born and raised in our islands. My great-grandfather started Petersons' Upland Farm in 1910 and my grandfather worked at Waialua Sugar Mill. My father is a teacher and my mother is a farmer. As a product of Mililani public schools and the farm, I'm committed to promoting agriculture, education, and opportunity in Hawai'i. I have a passion for the community that my family has been a part of for so long and I am ready to represent you at the State Capitol.



WWW.LAURENCHEAPE.COM

Editor's Choice

HAVING MOM OVER FOR DINNER!

(Author Unknown)

You don't even have to be a mother to enjoy this one...

Brian invited his mother over for dinner. During the course of the meal, Brian's mother couldn't help but notice how beautiful Brian's roommate, Jennifer, was. Brian's Mom had long been suspicious of a relationship between Brian and Jennifer, and this had only made her more curious. Over the course of the evening, while watching the two interact, she started to wonder if there was more between Brian and Jennifer than met the eye.

Reading his mom's thoughts, Brian volunteered, "I know what you must be thinking, but I assure you Jennifer and I are just roommates."

About a week later, Jennifer came to Brian saying, "Ever since your mother came to dinner, I've been unable to find the beautiful silver gravy ladle. You don't suppose she took it, do you?"

Brian said, "Well, I doubt it, but I'll send her an e-mail just to be sure." So he sat down and wrote:

Dear Mom:

I'm not saying that you "did" take the gravy ladle from the house, I'm not saying that you "did not" take the gravy ladle. But the fact remains that one has been missing ever since you were here for dinner.

Love, Brian

Several days later, Brian received an email back from his mother that read:

Dear Son:

I'm not saying that you "do" sleep with Jennifer, I'm not saying that you "do not" sleep with Jennifer. But the fact remains that if Jennifer is sleeping in her own bed, she would have found the gravy ladle by now.

Love, Mom

**LESSON OF THE DAY -
NEVER LIE TO YOUR MOTHER**

Hawai'i Equine Assisted Reflection & Therapy

Individual and Group therapy for youth, adults, families and groups
EAGALA certified professionals, no horse experience necessary, safe, and FUN!

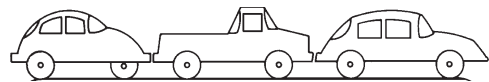
Now offering 25% off
group Learning and
Team Building sessions!

(808) 561-4184

www.HeartHorses.com



CAR WASH !



Starting at \$5

Saturday, August 4, 2012

8am to 1pm

Waialua Community Assoc. in Hale'iwa

Proceeds to benefit the North Shore Food Bank

Sponsored by the Once A Month Church

(to volunteer or donate call 342-3969)

OK to bring food donation too

Na Wahine O Ka Hula Mai Ka Pu'uwai Halau

*(The Women Who Dance Hula
From The Heart)*

Sunday, August 5, 2012

4:00 p.m. - 5:30 p.m.

Waialua Bandstand

North Shore Community

BLOOD DRIVE

Sponsored by Virginia Abshier, MD

Give the gift of life.

One pint of blood can save up to three lives.

Saturday, July 28

8:00 a.m. to 12:15

Saturday, September 22

8:00 a.m. to 12:00

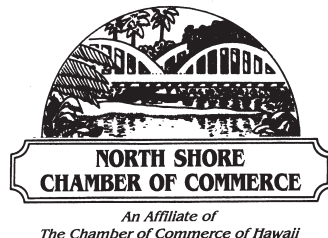
Saturday, November 24

8:00 a.m. to 12:00

**Bloodmobile at
Virginia Abshier MD's Office
66-214 Haleiwa Road**

For an appointment contact
Dr. Abshier's office 637-7425
Blood Bank of Hawaii 848-4770

Please bring valid photo ID with birthdate.
Eat well and drink plenty of fluids.
Blood drives are subject to change.



Business Services Center

Fast & convenient fax,
copy, scan,
computer/internet,
laminare, etc.

Across from Haleiwa post office.
North Shore Chamber of Commerce
808.637.4558
www.GoNorthShore.org

The Hale'iwa Family Dental Center, Ltd.



presents

"Comfort Dentistry"

including—

- Relaxation Glasses
- Television Glasses
- Caring Staff
- Special Medication to help you relax
- Laser Cavity Detection
- New Patients Welcome!

Your teeth are much too important to neglect.

Call: 637-9652
for your reservation

We're conveniently located behind First Hawaiian Bank
in the heart of Hale'iwa.



SAVE MORE WITH THE PKB 5-0 CARD @ Paalaa Kai Bakery

Ask one of our friendly cashiers for a
FREE PKB 5-0 CARD today! Our card
awards you with a discount on every
purchase!

www.pkbsweets.com



Fill up the entire card and you will
receive a \$5 gift certificate good for
use on your next visit!



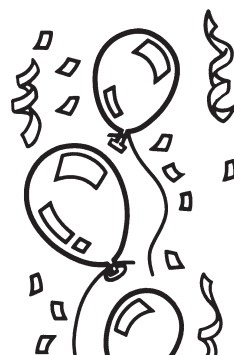
We look forward
to seeing you
again soon!

MAHALO!

Our next service at Hale'iwa Beach Park

Sunday, July 29

We're the church that gives to you



Trish Coder photos.

SUNDAY SCHEDULE

8 a.m.-9:30 a.m.
 Register for FREE give-aways
 9 a.m.-10 a.m.
 Sunday School for keiki 4-12 yrs.
 9:30 a.m.-Pre-service give-aways
 10 a.m.-12 noon Joyful Church Service
 (10-minute sermon)
 12 noon Celebration Feast/Food for all!

OUR 2012 SERVICE SCHEDULE

July 29 • August 26
 September 30 • October 28
 November 25
*FREE shuttle bus from Waianae Coast.
 Call for information: 342-3969*

From anywhere on O'ahu take the Circle Island city bus to Hale'iwa Beach Park

First 300 to register will receive a free cash offering!

No church offering collected, instead, we give our money to you!

First 300 to register get a free bag of groceries.

Super-loaded grocery cart give-away.

FREE lunch for everyone at 12 noon!

Includes Uncle David Anana's local beef stew, fresh salad & much more!

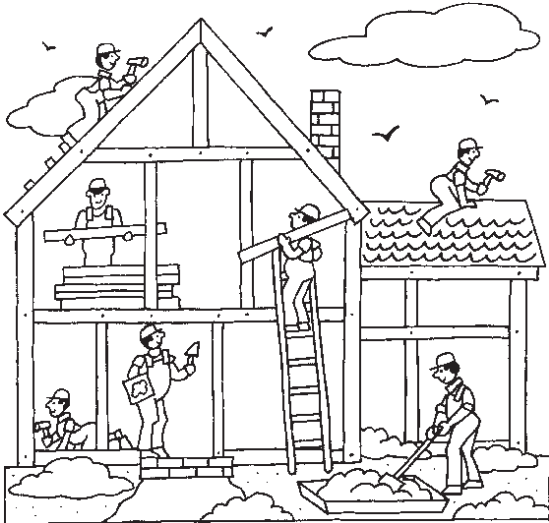
• Bring a beachmat, lawn chair or blanket, and be sure to bring your appetite!

SURFERS, SAINTS & SINNERS ARE WELCOME!

OAMC is a community outreach made possible by many generous supporters and volunteers. If you would like to support or volunteer for the OAMC call 342-3969.

The OAMC is scheduled to meet on the last Sunday of every month (except May & December).

"There will always be poor people in the land. Therefore I command you to be open handed toward your brother and toward the poor and needy in your land." (Deuteronomy 15:11)



Attention!

- Contractors • Plumbers • Masons
- Electricians • Painters • Banks •
- Carpenters • Roofers • Landscapers
- Locksmiths • Lawncare-Gardening •
- Pool Builders • Maintenance
- Hardware Stores • Yard Service •
- Tree Trimmers • Housecleaners

REVISED PUBLICATION DATE:

August 8, 2012

DEADLINE: July 27, 2012

Don't miss our annual

HOME IMPROVEMENT EDITION

Advertising Deadline is Friday, July 27, 2012

Call today for the best prices and page location

Advertising in the North Shore News puts your ad into 10,000 homes by direct mail. 14,000 total copies printed.

342-3969

Coffee!
You can sleep when you're dead!

**6:30AM - 8:00PM EVERY DAY
NORTH SHORE MARKETPLACE**

WWW.ROASTMASTER.COM

www.pkbsweets.com

SUPER SAVER COUPON Special Offer!

15% off (1) loaf of...

PKB'S FOOTBALL BREAD

This coupon is valid until August 8, 2012. Discount is valid on one loaf of football bread. Discount cannot be combined with other promotions, VIP cards or PKB 5-0 cards.

Mahalo and have a great day!

Clip this coupon and bring in to SAVE!



Editor's Choice

"The Kid from My Class"

(Author Unknown)

One day, when I was a freshman in high school, I saw a kid from my class walking home from school. His name was Kyle.

It looked like he was carrying all of his books. I thought to myself, 'Why would anyone bring home all his books on a Friday? He must really be a nerd.' I had quite a weekend planned (parties and a football game with my friends tomorrow afternoon), so I shrugged my shoulders and went on.

As I was walking, I saw a bunch of kids running toward him. They ran at him, knocking all his books out of his arms and tripping him so he landed in the dirt. His glasses went flying, and I saw them land in the grass about ten feet from him.

He looked up and I saw this terrible sadness in his eyes. My heart went out to him. So, I jogged over to him as he crawled around looking for his glasses, and I saw a tear in his eye.

As I handed him his glasses, I said, 'Those guys are jerks. They really should get lives.'

He looked at me and said, 'Hey thanks!'

There was a big smile on his face. It was one of those smiles that showed real gratitude. I helped him pick up his books, and asked him where he lived.

As it turned out, he lived near me, so I asked him why I had never seen him before.

He said he had gone to private school before now.

I would have never hung out with a private school kid before.

We talked all the way home, and I carried some of his books. He turned out to be a pretty cool kid.

I asked him if he wanted to play a little football with my friends. He said yes.

We hung out all weekend and the more I got to know Kyle, the more I liked him, and my friends thought the same of him.

Monday morning came, and there was Kyle with the huge stack of books again.

I stopped him and said, 'Boy, you are gonna really build some serious muscles with this pile of books everyday!' He just laughed and handed me half the books.

Over the next four years, Kyle and I became best friends.

When we were seniors we began to think about college. Kyle decided on Georgetown and I was going to Duke.

I knew that we would always be friends, that the miles would never be a problem.

He was going to be a doctor and I was going for business on a football scholarship.

Kyle was valedictorian of our class. I teased him

all the time about being a nerd. He had to prepare a speech for graduation. I was so glad it wasn't me having to get up there and speak.

Graduation day, I saw Kyle. He looked great. He was one of those guys that really found himself during high school. He filled out and actually looked good in glasses. He had more dates than I had and all the girls loved him. Boy, sometimes I was jealous!

Today was one of those days. I could see that he was nervous about his speech. So, I smacked him on the back and said, 'Hey, big guy, you'll be great!'

He looked at me with one of those looks (the really grateful one) and smiled. 'Thanks,' he said.

As he started his speech, he cleared his throat, and began. 'Graduation is a time to thank those who helped you make it through those tough years. Your parents, your teachers, your siblings, maybe a coach, but mostly your friends.

I am here to tell all of you that being a friend to someone is the best gift you can give them. I am going to tell you a story.'

I just looked at my friend with disbelief as he told the first day that we met.

He had planned to kill himself over the weekend. He talked of how he had cleaned out his locker so his Mom wouldn't have to do it later and was carrying his stuff home. He looked hard at me and gave me a little smile.

'Thankfully, I was saved. My friend saved me from doing the unspeakable.'

I heard the gasp go through the crowd as this handsome, popular boy told us all about his weakest moment.

I saw his mom and dad looking at me and smiling that same grateful smile. Not until that moment did I realize it's depth.

Never underestimate the power of your actions. With one small gesture you can change a person's life. For better or for worse. God puts us all in each other's lives to impact one another in some way. Look for God in others.

SAVE THIS DATE!!!

Saturday, October 13, 2012

9:00 a.m. to 2:00 p.m.

HALEIWA JODO MISSION'S ANNUAL

CRAFT FAIR

66-279A Haleiwa Road

* Interested in selling your crafts? Please call 637-4382 or write to *
* haleiwajodominionya@gmail.com for more information. *



Every Vote Counts!

1893 - 1971

KAHUKU SUGAR MILL

Re-Elect Representative

Gil Riviere

House District 47

Waialua, Haleiwa, Pupukea, Sunset Beach, Kahuku, Laie, Hauula, Punaluu, Kahana, Kaaawa, Waikane, Waiahole

Primary Election Day is August 11

Democrats, Republicans and Independants can all vote for Gil in the Primary Election. Your vote matters and Gil needs your vote in this election.

I Need Your Vote!

I NEED YOUR VOTE, whether you are a Republican, Democrat or Independent, to win the Primary Election on August 11th. Your vote could make the difference.

I NEED YOUR VOTE to continue protecting and improving the quality of life of the residents of the North and Windward Shores.

I NEED YOUR VOTE to continue my determined and effective representation in the Legislature on critical environmental, land use, agricultural and state budgeting issues.

I am approachable and always available. I consistently participate in the many communities I represent. I listen to all sides, build consensus and deliver creative solutions. I made a large, positive impact at the Capitol in my first term and I will become even more effective with YOUR SUPPORT of my re-election, but **I NEED YOUR VOTE** on August 11th.

Mahalo,



Janine, Gil, Liz and Jake Riviere



Re-Elect Representative
Gil Riviere®

Letters to the Editor

RE: Sale of Hale'iwa Park Land

Dear Editor:

My comments are in reply to a letter submitted to you by Tom Jacobs, regarding his position on the sale of park land for private use.

First of all, there are many folks from Hale'iwa who are against the resolution and are not part of any organized and vocal group. I am one of these people. I felt I needed to rebut your letter due to its many inaccuracies.

You start your argument by saying that "the resolution is selling park land is bogus." They are indeed selling park land. It is owned by the City and the land is zoned as preservation land. It is NOT zoned as commercial land as Mr. Anderson would love it to be. Just because it hasn't been used as park land doesn't mean that what the land was set aside for can now be ignored. It was set aside to be used by the public not private entities.

You say "the City would make money on the sale" and then they can purchase "real park land." Where is this magical "real park land?" Is it in Hale'iwa with a prime location and view of the ocean? Oh wait, that is the park land that they are selling. The park land that they are selling is already in a great location that has a wonderful potential to be used for the enjoyment of the public.

You say "What's wrong with Kamehameha Schools or Andy Anderson building a two-acre park?" EVERYTHING. This park now becomes a PRIVATE park for the use of their patrons. Not a PUBLIC park whose use is for the people. And Kamehameha Schools and Andy Anderson must think this is "real park land" themselves if they are willing to build a two-acre park on it. Do you see the irony?

In addition, Oahu is the most populated island in the Hawaiian chain as we all well know. The public outdoor space for the people of Oahu to enjoy is very limited. By letting a private entity purchase public land is setting a harmful precedent. This opens the doors for other public lands to be sold off limiting our usable space even further. Instead we need a policy of ACQUIRING more land for the public to enjoy, not less.

We need to keep the country, country.

Mahalo,
Damon King

Quality Tile Crafts

"No job too big or small!"

Specializing in Ceramic Tile,
Travertine, Marble, & Slate

Kevin Wilson

cell (808) 864-4985 office (808) 638-8492

www.QualityTileCrafts.com Free Est.

KUA'AINA



The Best!

• IN HALEIWA •

637-6067

• IN HONOLULU •

591-9133

AT WARD CENTRE

HALEIWA • TOKYO • HONOLULU • LONDON

surfer THE SUNDAY CHAPEL



It's not just for resort guests...

Surfers, Saints & Sinners are welcome!

Every Sunday at 9am in the beautiful
oceanside wedding pavilion.

*Non-denominational 45 min. service

*Traditional & Contemporary music

*10 minute sermon!

Hosted by Pastor Ron Valenciana - 808-342-3969

TURTLE BAY RESORT

When church is pau enjoy dining at the Palm Terrace Cafe, Hang Ten
Pool Bar, Lobby Cafe or Leilei's

Turtle Bay Resort's SEIS Community Update

provided by Replay Resorts on behalf of Turtle Bay Resort

This article is the 10th in a series of updates to the North Shore News community about the ongoing progress of Turtle Bay Resort's draft Supplemental Environmental Impact Statement (SEIS) Preparation Notice and the Revised Plan. Turtle Bay Resort (TBR) has the unique opportunity to honor and respect these lands and community by incorporating traditional Hawaiian cultural values into its environmental review process, planning and implementation of the Revised Plan. For more information and the latest news about Turtle Bay Resort's SEIS, please log onto www.turtlebayseis.com. All previous articles of our SEIS Community Updates and our mini-series on the rebranding campaign are also available online.

This particular mini-series focuses on the repositioning of Turtle Bay Resort – an initiative intended to meet the evolving expectations of today's travelers as well as to redefine the resort's relationship within the local community. The new Turtle Bay brand consists of six pillars built on the solid foundation of the Native Hawaiian culture. This update will feature our first two pillars: "Oahu's Fabled North Shore" and "Eventful".

Our first pillar "Oahu's Fabled North Shore" perfectly summarizes the re-branding effort of Turtle

Bay Resort. Travel + Leisure, one of the world's premier travel magazines, recently described the Oahu's North Shore as "the fabled North Shore where local and visiting pro and amateur surfers, TV and movie types, and tourists meet in an international pop-culture mecca." Oahu's North Shore, aside from being known for its epic surf is also renowned for its legendary beaches, quaint shops and cafes housed in plantation-era buildings. This pillar recognizes the North Shore as a favorite refuge, a quick escape, for residents of Honolulu and a must-see for visitors to Waikiki but more so recognizes the North Shore as a region of rare beauty, diverse wildlife both on land and sea, and a rainbow tribe of fascinating people who roots go back to ancient Hawaii and many countries around the Pacific Rim.

Our second pillar "Eventful" highlights and features the ongoing presence of truly special events at Turtle Bay Resort. The resort has been the host to events such as the World Paddleboard Championship, a Slack Key Playoff, Festival of Cane Spirits, a Makahiki and of course the notable annual Vans Triple Crown of Surfing and Surfer Magazine's Surfers' Poll Awards. These events are key to increasing global awareness and community benefits of Turtle Bay Resort. Events, whether they are spectacles or small moments of close-knit discovery – are the new "community creators" in a world where people are feeling increasingly detached from reality.

These two pillars are part of an integrated strategy and, as with every aspect of the planning with Turtle Bay Resort, we endeavor to preserve, enrich, and perpetuate the Native Hawaiian culture.



Fresh pizzas, subs, pasta & salad

Jerry's Pizza

637-8866

Open 7 days a week

7 a.m. – 9 p.m.

Located in beautiful downtown Waialua
at the Waialua Shopping Center.

jerrypizzamill@gmail.com

Jerry's Pizza Now Serving Breakfast

Jerry's Pizza in the Waialua Shopping Center is now open for breakfast. Stop by and try the delicious breakfast pizzas. All pizzas are made with scrambled eggs, cheddar cheese, mozzarella cheese and salsa.

Sunrise - bacon, potatoe, avocado
Paniolo - ham, bacon, Portuguese sausage
Apple & Cheese - apple, cinnamon
Banana - banana, cinnamon

Other items on the menu include: egg and cheese sandwich or breakfast burger. Jerry's is open everyday from 7 a.m. - 9 p.m.

2012 North Shore Ocean Quest Stand-Up Paddleboard Race

Saturday August 11, 2012, 10:00 am, Waimea Bay

The North Shore Lifeguard Association & Quiksilver Foundation (non-profits) again presents a community driven **FUN-raiser** Stand-Up Paddleboard "race" (Waimea Bay to Haleiwa Alii Beach Park) targeted mainly for family, friends and the weekend-warrior. Awards/prizes for top finishers w/ proceeds to benefit North Shore youth ocean recreation & water safety programs (e.g. Haleiwa Surf Center, NS Jr. Lifeguards). Enjoy a day of friendly competition, camaraderie and exercise by joining the "quest" to give back to the community! After-event entitled "Kanikapilapalooza" (see Facebook page) w/ Live Music, silent auction, raffle-prizes & fundraising food/drinks booth is planned for Saturday, August 18th at Turtle Bay Resort 2-9:30p Open to all ages! Go to Facebook page: "North Shore Ocean Quest Stand-Up Paddleboard Race" for race information & to download the race's entry blank.

Entry Fee: \$35.00 (Includes adult size tank-top guaranteed to pre-registrants, drink, snack, a beach raffle ticket)

Entry Blank & fee must be received by Wed. August 8th or dropped-off at Surf-N-Sea by COB on Thurs. August 9th

Beach Entries: (If space available) 8 am - 9:40 am on race-day **Registration Check-In:** 8:30am-9:40 am

Pre-race briefing: at 9:45 am & race start promptly @ 10:00 am

Entries are limited so get your application in early!

**Safety Tips &
Event
Precautions**

- 1) Prep w/ lots of rest the night before & insure pre/during event proper hydration
- 2) Use suitable SUP equipment for the estimated 3.5-4 miles course
- 3) Immediately claim your SUP after your race time is documented to prevent theft
- 4) This endurance event requires physical/mental preparation to safely complete the course within 2.5 hrs.

Clearly print the following information: One completed entry blank AND \$35.00 entry

fee per person & partner (if any)

First and Last Name:	Entered as (check each): Stock SUPs 13' & Under & Rudderless: <input type="checkbox"/> Self ...OR <input type="checkbox"/> Ohana (Spouse/Spouse, Parent/Son-Daughter) w/ combined race-times
First and Last Name of Partner (if any)	Gender (check each): Self = Male___ Female___ Partner (if any)= Male___ Female___
Mailing Address & Phone:	Stock SUPs 13' & Under & Rudderless (check one): <input type="checkbox"/> 20 & Under <input type="checkbox"/> 21-35 <input type="checkbox"/> 36-49 <input type="checkbox"/> 50 & Older OR Unlimited: SUPs Over 13' or any SUP w/rudder: ___ Male ___ Female
E-Mail Address:	Tank-Top Size (Adult): <input type="checkbox"/> Small <input type="checkbox"/> Medium <input type="checkbox"/> Large <input type="checkbox"/> XLarge <input type="checkbox"/> XXLarge

ACCIDENT WAIVER & RELEASE LIABILITY: The 2012 North Shore Stand-Up Paddleboard Race in consideration of my application and permitting me to participate in said event to be held on August 11, 2012. I hereby take action for myself, my executors, administrators, heirs, next of kin, successors, and assigns as follows: (A) Waive, release and discharge from any and all liability my death, disability, personal injury, property damage, property theft or actions of any kind which may hereafter accrue to me including my traveling to and from this event. THE FOLLOWING ENTITIES OR PERSONS: North Shore Lifeguard Association, Quiksilver Foundation, Aloha Surf Lifesaving, the City & County of Honolulu and/or the State of Hawaii, their directors, officers, employees, volunteers, representatives, and agents, event holders, event sponsors, event directors, event volunteers; (B) Indemnify and Hold Harmless the entities or persons mentioned in this paragraph from any and all liabilities or claims made as a result of participation in this event, whether caused by negligence of releases or otherwise. This Accident Waiver & Release of Liability shall be constructed broadly to provide a release and waiver to the maximum extent of the law. I hereby certify that I have read this document and all accompanying rules and safety recommendations and I understand their contents.

**Complete Entry Form and send
with check payable to:
North Shore Lifeguard Association
PO Box 893974 Mililani, HI 96789**

Participant's Signature:	Date:
Parent/Guardian's Signature (If participant is a Minor):	Date:



BULLETIN BOARD

LIC. #AC 18275



COWPER CONSTRUCTION
GENERAL ENGINEERING CONTRACTOR

Full Service Sitework Contractor
Septic Systems & Tanks
 25 yr. exp.
Michael Cowper 638-7200
 cowperhawaii.com

FMS
Financial Management Solutions
 Income Tax Services, Comprehensive Financial Services, and Insurance Planning

Complete Financial Services are available on-line.
 Please visit our website for more details.
 Virtual Office Address:
www.FMS-USA.com

Office: 1-855-753-7750 • Fax: 1-866-307-3330 • Email: amber@fms-usa.com

Amber M. Dobb, Registered Representative, H.D. Vest Financial Services, Inc. Securities Offered Through H.D. Vest Investment Services SM, Member SIPC A non-bank subsidiary of Wells Fargo & Company, 6333 North State Highway 161, Fourth Floor, Irving, Texas 75038, 972-870-6000

Asian Pacific Investments
Glen Miyamoto
 REALTOR - ASSOCIATE

CENTURY SQUARE
 1188 BISHOP STREET, SUITE 2511
 HONOLULU, HI 96813

OFFICE: 808-714-9993
 EXT. 5
 DIRECT: 808-224-1608
 FAX: 808-440-0046

glen@asianpacificinvestments.com
 www.asianpacificinvestments.com

HOLOHOLO MOBILE SCREEN SERVICE



- *new window installation
- *new screens/re-screens
- *pet proof screens
- *jalousie repairs
- *porch enclosers
- *sliding/swinging screen doors
- *pet grills & doors
- *solar screens
- *screen door roller repair

FREE ESTIMATES
808-783-8764
 www.OahuScreens.com



THE RAINBOW BALLOON MAN

864.9599

albertnakanishi@aol.com
 Parties • Special Events

Munden Design & Build
 Lic.#BC19632

Design • Plans • Permits • Construction
 Additions & New Residences
808 391-8616

Providing quality work since 1978

SUNSET AUTO SERVICE, INC.

- Auto air conditioning specialist
- Auto engine maintenance
- Safety inspection station

Walking distance to Wahiawa DMV

Call for appointment
 622-5510
 Matt Verdadero
 207 N. Cane St., #1 Wahiawa




BEAR ENGINEERING

754-3579
www.BearEng.com
 Waialua, HI

- Home Inspection
- Structural Inspection
- Septic System Design
- Grading Plans
- Retaining Wall Design
- Drainage Solutions
- Utilities Planning
- Foundation Design

Local Dump Sites
 (refuse trasher stations)
OPEN 7 DAYS A WEEK • 7 a.m. - 6 p.m.
 (except Christmas /New Year)

Kaawailoa (Waialua) 637-5511
 Laie 293-8714
 Wahiawa 621-3648

OPALA.ORG
 Don't Dump on Hawaii Sort it out!
692-5656

Statewide Hotline for Litter
1-888-592-2522

Callers need to provide:

1. License plate number
2. Make and model of vehicle
3. Date and time and location
4. What was thrown/blown

BULLETIN BOARD



Featuring the largest selection of certified organic produce on the North Shore.
No panic...ours is organic.
Open 7 days.
Mon.-Sat. 9am-6pm.
Sun. 9am-5pm

66-445 Kam. Hwy
Haleiwa, Hawaii 96712
Next to the Post Office
808-637-6729 • 808-637-1922 fax



DR. PORTER TURNBULL
Chiropractic Orthopedist
(808) 638-8740
Appointments available Mon.-Sat.
(evenings by appointment)

- Industrial accidents & auto injuries
- Sports injuries • Spinal care
- Safe, Effective, and Gentle

N-C PLUMBING & SUPPLY



Cont. Lic. No. C-8913

- RESIDENTIAL & COMMERCIAL SALES & SERVICE
- CONTRACTING & DESIGN • HOME PLUMBING SERVICE
- PLUMBING FIXTURES, HEATERS • FREE ESTIMATES

Nestor P. Calilao (Owner) Bus: 637-8662
P.O. Box 769 Res: 638-5157
Waialua, HI 96791 Cellular: 372-8718

email: nncplumbing@hawaii.rr.com

NORTH SHORE AUTO SALON

66-540 Kamehameha Hwy., Haleiwa
(Right behind TESORO gas station)

Wash & Wax, Vacuums, Remove Waterspots
Interior Shampoos, Polish Rims, Polish Motorcycles, etc

\$5 OFF with this ad/ Package A thru E
312-8511

northshoreautodetailsalon.com

northshoreautosalon@yahoo.com



Restaurant & Margarita Bar

- DAILY SPECIALS -

Island Fresh Fish Tacos
Premium Margaritas

Large Parties Welcome Open Daily 9:30am - 9:30pm
637-3059 • North Shore Marketplace • Haleiwa
www.CHOLOSMEXICAN.com



Specializing in vegetarian foods, vegan foods, whole foods, organic food.
Wheat free, dairy free, raw foods, gluten free. A complete selection of natural foods for 37 years.
Make earth day, everyday.

Open 7 days.
Mon.-Sat. 9am-6pm.
Sun. 9am-5pm

66-445 Kam. Hwy
Haleiwa, Hawaii 96712
Next to the Post Office
808-637-6729 • 808-637-1922 fax

Pilates with Linda Yadao

Private, Semi-Private and Mat Classes
Over 30 Years Experience

Call: 637.1230
linda@ynrmarketing.com

HAIR SPECIAL

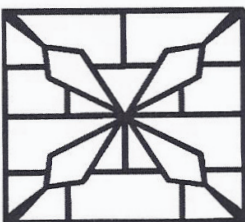
Full Highlight and Cut \$100.00

GINA WALKER

Hairdresser to the stars
from Malibu, CA

Senior Stylist & Color Master
20 years experience

North Shore Salon & Spa
in Haleiwa Town 808-375-3984



GROVER MASONRY

Rick Grover
(808) 983-9331 cell
(808) 638-8120 office
rick@grovermasonry.com

License # C-18302

Farmer & The Baker, LLC

(Formerly Mokuleia Landscape & Nursery)



Trees, Palms & Shrubs

Contact Us: 808-341-1992



The North Shore News is published every other Wednesday and mailed free of charge to all North Shore homes and businesses. Extra copies may be obtained at our office.

PRESS RELEASE POLICY: Submit press releases in person or by fax, mail or email to Editor, North Shore News, P.O. Box 1117, Haleiwa, HI 96712. Please type your releases and keep them shorter than 200 words unless they are of an unusual news interest. Releases should be viable news stories and are published on a **space available basis only**, with priority given to those received in our office first. You may attach photos. We are not responsible for the return of any photos. All materials are submitted at owner's risk. We reserve the right to edit and/or refuse all submissions including advertising.

EDITORIAL POLICY: We welcome articles and letters from our readers. Letters to the Editor are published on a space available basis only and preference is given to shortness of length, and quality of content. We prefer to run not more than one letter, per person, per 6 month period. Letters subject to edit.

Views expressed by our contributing writers and advertisers do not necessarily reflect the view of the management and staff of the North Shore News. All rights reserved. Reproduction in whole or part without permission is prohibited. © 2012.

PUBLISHER/EDITOR
RON VALENCIANA

TYPOGRAPHY
DOWNTOWN GENERAL STORE
BOOKKEEPING & CLASSIFIEDS
LINDA SEYLER

CONTRIBUTING WRITERS
RON VALENCIANA,
NATY HOPEWELL
STATE SENATOR DONOVAN DELA CRUZ
CITY COUNCILMAN ERNIE MARTIN
STATE REPRESENTATIVE GIL RIVIERE

**For Advertising Rates,
call
637-3138**

CLASSIFIEDS

♥♥Need a minister for a North Shore wedding? Hundreds of knots tied for happy couples on Oahu. Simple beach-side ceremonies to formal church or chapel services. I'll make your special day an extraordinary memory. Call & leave clear message with phone number & possible date, time & place. 342-3969. Also: Vow renewals, house blessings, baby luaus.

PAUMALU ELECTRIC
David C. Hancock
638-9054 / Lic#C18074

SHORE ELECTRICAL SERVICE
New Const-Remodels
638-0049 / Lic#C20777

LGR Construction
Remodel • Repair • Design
Drafting • Painting • Small Jobs
Affordable rates. 343-4453/Lic#26759

Dog/Cat Nail Trimming
at your home only \$15.00
Call Julie 637-5395

Aloha Computer
PC Repair/Virus Removal
Fax/Copy/Internet Access
372-2667 or 237-4558

Lawn Care For You
Mowing, Trimming, Light Hedging
Call Thomas 637-5839

Ross McGerty BC24080
349-6359 • 637-9539
From Waiialua to Sunset
Make Me the First Call
for Home or Rental Repairs
or Renovations

EXPERT ELECTRICIAN
Fans, emergency services, etc.
Jim Richards 371-9369

PARADISE PLUMBING INC.
New Const • Repairs • Remodels
808-368-1473 / Lic. 29856

BEACH PLUMBING & ROOTER
Over 30 years experience
Call Larry 637-6400

Handyman Services
Remodeling, Carpentry, Floors,
Concrete, all parts of Construction
Call Bob "The nicest guy in the
business" Ph. 282-2812

Haugan Construction LLC
Build & Repair • Big & Small
Let's Talk
Steve 542-9269

BOW WOW BUNGALOWS
Licensed Boarding Kennel
North Shore, Oahu
Reasonable Rates
Ph. 637-2562
These Dogs Have Fun!

HARVEY'S REPAIR, LLC
24 hrs Towing Service
Specializing in opening
locked car doors
Call any time 478-0333

GERMAN CAR SERVICE
Professional-Qualified
Technician
Call Gary
637-6800

North Shore Farmers Markets
Waiialua Sugar Mill: 8:30 a.m. to noon
Saturdays & Wednesdays 4:40 p.m.
to 7:00 p.m.
North Shore Country Market: 8 a.m. to
2 p.m. Saturdays, Sunset Beach Elementary
School, 59-360 Kamehameha Hwy.
Laie: 11 a.m. to 2 p.m. June 24, July
8 and 23, Brigham-Young University-
Hawaii, 55-220 Kulanui St.

Next Issue - Aug. 8, 2012
Deadline Date-July 26, 2012

BIKRAM YOGA
See our new studio, anti-
microbial, anti-bacterial
carpet and more!
Please call for class schedule
637-5700

North Shore Pumping
Cesspool & Septic Pumping
Complete Plumbing
Services, new & repairs
Lic. & insured #25567
638-0900 • 291-5089

N.S. Property Maintenance
Power wash, painting int/ext,
deck repairs, extensions,
fences, gates,
carpentry & remodels.
Maintenance, lawn & yard.
Chris 381-5213/638-0659

SHIATSU • LOMI
Aromatherapy
Milica Barjaktarovic
Lic # MAT8348
351-0848
HumanRemodeling.com

WINDOW CLEANING
Expert - 30 plus years
experience.
Also pressure wash.
Jack Wheeler
594-3339

LEARN TO SWIM
AT THE
HAWAII SWIM
SCHOOL
ON THE NORTH SHORE
Developing swimmers since 1982
Haleiwa Rd. at Smiley Place
637-4863

SUBSCRIPTION RATES

If you live outside the North Shore area on Oahu, neighbor islands, or the mainland, you can subscribe to the North Shore News. Our annual subscription rate is \$35 for 25 issues delivered by standard bulk mail (2-3 weeks), or \$55 for 25 issues delivered by first class postage (3-5 days). Call our office for payment information at (808) 637-3138.

HOW TO CONTACT THE NORTH SHORE NEWS

Letters to the Editor, and other items submitted for publication consideration may be sent to us via:

MAIL: P.O. Box 1117, Haleiwa, HI 96712

E-MAIL: NShoreNews@aol.com

FAX: (808) 637-8862

PHONE: (808) 637-3138

CLASSIFIED ADS

hawaiiweddingminister.com

342-3969

32 years experience

Offshore Plumbing, Inc.

Commercial • Residential
• Septic • Solar • Design

Mike 630-1407

Steve 371-3451

Lic #C28113

Fax 638-9022

offshoreplumbing@yahoo.com

BOBBY'S BODIES

Tuesday evenings at 5:00 p.m.

• Body Toning

Friday mornings at 9:00 a.m.

• Cardio Pump/Fat Burner

For more info: call Bobby, owner of BOBBY'S BODIES at 637-4150

Lisa Carley Skin Care

637-9400

lisacarley.com

67-292 Goodale Ave. #104

Waialua Shopping Center

ANGELS PLUMBING

Repairs
Remodeling
Renovation

638-7878

Lic. #C12004



THE LAWN RANGER

Lawn Maintenance
no yard too hard
no lawn too far gone
We mow betta
258-6439 Dan Fatchett

Marianne Abrigo, Properties

Specializing in -
North Shore
Real Estate

Ask for our list of available properties and/or a free market analysis.

Marianne M. Abrigo

"Realtor since 1974"

Office

637-3511

Fax

637-0777

Email

mabrigo222@aol.com

PAINTING

INTERIOR, EXTERIOR
FREE ESTIMATES

OAHU PRECISION PAINTING

LIC #31602

SKIP WUNDERLICH 220-9083

Local Grass Fed BEEF

FOR SALE USDA inspected

NO hormones/antibiotics

Tritip, Sirloin, Ground, NY

Call 954-9495

YOUR CLEAN HOME

Specializing in Residential &
Vacation Home Cleaning

Experienced/Reliable & Affordable

Green Cleaning for our Planet!!!

FREE ESTIMATE

(808) 638-0262 or 782-9941

HELP WANTED

BUSSERS/SERVERS

Pizza Bob's in Haleiwa is looking for BUSSERS/SERVERS. Experience preferred. Apply in person at 66-145 Kam. Hwy.

COOKS/KITCHEN HELP

Pizza Bob's in Haleiwa is looking for kitchen personnel. Experience preferred, but will consider training the right people. Apply in person at 66-145 Kam. Hwy.

F/T Administrative Assistant Needed for NS Office

AA degree - Excellent oral communication - Administrative writing skills - Minimum 2 yrs clerical and admin experience - Familiarity with Microsoft Office - Dependable

Fax or mail resume to:

Saccoccio & Lopez

66-037 Kamehameha Hwy, Ste 3

Haleiwa, HI 96712

Fax: 637-4490

No phone calls please.

Pupukea Grill front counter/light prep. Please drop off resume at Pupukea Grill during business hours (11am-5pm, Thursday-Tuesday) or email resume to: pupukeagrill@gmail.com

YMCA Camp Erdman

Food Service Worker

On-Call position

Apply in Person or

at ymcahonolulu.org

No Phone Calls please

Retail Sales

Surf & Sea

Hawaii's Ocean Sports Headquarters is always looking for hard working, energetic people to become a part of our sales team. Good pay, bonus, benefits. Ocean sports experience and/or bilingual a plus. Apply in person daily 9am-7pm 62-595 Kam. Hwy., Haleiwa

Farm seeking responsible hard working individuals. Work included but not limited to harvest, prune, clean & prep w/ flexible hours. Leave a message. Call 707-200-1375

FOR SALE

Like new 88 - Key Hammer Action Premium Stage Piano by M-AUDIO. Includes carrying case with wheels, stand, sustain pedal, AC plug, user guide (unopened) and CD software. Paid new at Easy Music for \$1000, asking \$500 firm. Used 2X. Call 342-3969 from 8am to 10pm.

MISCELLANEOUS

OFF da ISLAND

Are you leaving Oahu on vacation or business? Do you live on a neighbor island, the mainland or foreign country and subscribe to the North Shore News? Try send us a photo of someone in front of a sign or landmark holding a copy of the NSN. Email your photo along with the person or persons' name, community of residence, telephone number and photo location to: NShoreNews@aol.com. Or, mail to OFF da ISLAND Photo, North Shore News, P.O. Box 1117, Hale'iwa, HI 96712. We cannot return photos so please send us a copy. Photos received become the property of NSN. Preference and priority will be given to emailed photos.

Waimea Valley would like to offer FREE SPACE in our Parking Lot by the Parking Booth

to Farmers who grow crops

in the North Shore Area,

Every Sunday Morning

from 9:00am to 12:00 Noon,

until the Haleiwa Farmers Market

finds a permanent home.

For information: please call

Richard Pezzulo at: 638-5851

or email: rpezzulo@waimeaavalley.net



WAIMEA VALLEY

FESTIVAL

Music, food, art, crafts, sustainability, yoga, fashion, education & inspiration
SAT. JULY 28 @ North Shore Country Market at Sunset Beach Elem. 6pm-12am

more info/schedule visit northshoremusicfoodmovement.com
637-2117

REUNIONS

The NSN is happy to publish your school or family reunion Free of charge.

Email your announcement to NShoreNews@aol.com.

FREE Senior Citizen Art Class

Jay Marr Art Gallery-Waialua

Last Tues. of the month

10 a.m. - 12 noon

supplies included - space limited
call 637-2562

BEGIN WATERCOLOR

Jay Marr Art Gallery-Waialua

Tues. Evenings 6:30-8:30

\$30/class includes all supplies

(go home with a painting!)

call 637-2562 for details

Waikiki Hot Yoga

5th Fl. Miramar Hotel

Call for info: 277-9935

www.waikikihotyoga.com

Keep it Country To report ILLEGAL VACATION RENTALS

call 768-8159 or 768-8118

You will remain anonymous

Illegal Vacation Rentals

are ruining the North Shore

www.savenorthshoreneighborhoods.com

BEACH CLEAN UP

Chun's Reef - 10 a.m.

637-2211

Last Saturday of every month
adoptabeachhawaii.org

Business Services Center

Fast & convenient fax, copy, scan, computer/internet, laminate, etc.

Across from Haleiwa post office.

North Shore Chamber of Commerce

637-4558 or 342-8557



MALAMA MARKET HALEIWA:
OPEN DAILY 7 AM-9 PM
808.637.4520

MALAMA MARKET MAKAKILO:
OPEN DAILY 6 AM-10 PM
808.672.9955

Valid Dates:
7/25/12-7/31/12

Rainier
Cherries
16 oz.

\$4⁹⁹
EACH



Banquet
Family Entrée
Selected Varieties,
25-32 oz.

3/\$9



Farm Pack Eggs
Mainland, Grade A,
Shell Protected, Large,
18 Pk.

\$3⁹⁹



Yoplait
Greek Yogurt
Selected Varieties,
6 oz.

5/\$5



Rib Eye Steak
Bone-In, Value Pack

\$6⁹⁹
PER LB.



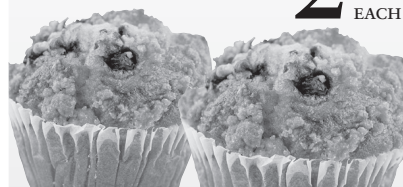
Betty Crocker
Hamburger Helper
Selected Varieties,
4.7-8.4 oz.

\$1⁴⁹



Muffins
2 ct.

\$2⁹⁹
EACH



Extra Large
Shrimp,
26/30 ct.
Previously Frozen

\$6⁹⁹
PER LB.



Charmin
Ultra Soft or
Ultra Strong
Bath Tissue
12 Double Rolls

\$8⁹⁹



Huli Huli* Chicken
Whole Roaster
*Used with Permission

\$7⁹⁹
EACH



Hinode
Calrose Rice
White or Brown,
20 lbs.

\$9⁹⁹



Tombstone Pizza
Selected Varieties,
12"

2/\$9



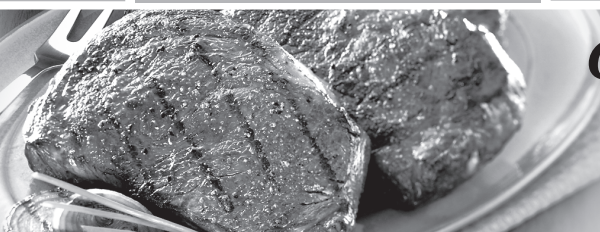
Heineken, Corona
18 Pk. Bottles
or Rolling Rock,
Pabst, or Keystone
30 Pk. Cans

\$19⁸⁸



THURSDAY

INCLUDES:
7-8 oz. Steak
Rice • Tossed Salad • Drink



Grilled Steak
LUNCH
\$6⁹⁹

Hawaii Beverage Fee of 1¢ per can or bottle will be added to purchase price at checkout. An Additional Hawaii Deposit fee of 5¢ will be charged for all specially marked beverage containers.

Limit five units (mix/match) per purchase, unless otherwise specified. We reserve the right to limit quantities. No sales to dealers. Prices plus applicable state tax. Hawaii EBT cards welcomed.