



“E Ala Na Moku Kai Liloloa”

In This Issue:
Polo Page 3
Operation : Backpack Page 4
Home Improvement Pages 11, 12 & 13
Kamehameha School Mahi'ai Match Up Page 19

NORTH SHORE NEWS July 23, 2014 VOLUME 31, NUMBER 15



TEAM CAUTION - Hazardous at the Bar

Waialua Health Club has been known to produce some of the islands strongest powerlifters. Going back over 30 years, Waialua has made a name for itself and has showed that a little town like ours means real business. This year was no different. On Sunday, July 13, 2014, TEAM CAUTION, a group of lifters who reside on the North Shore and train at WHC entered Sonny’s 10th Annual Push & Pull Championships at the Neil Blaisdell Arena. Under the coaching of Edwin Manmano, a veteran

powerlifter having several WABDL (World Association of Benchers and Deadlifters) World records and USPA (United States Powerlifting Association) American records; this group of lifters put their training to the test and left it all on the platform.

Of the 124 competitors from all over the Hawaii state and the mainland, Team Caution came home with 6 World records, 5 Hawaii State records, and 7 Most Outstanding awards. The team also took 2nd place overall in the team

division. Individual results are as follows:

Bench Press:

- Treylan Kobayashi: 275# @ 114 Teen Men 18-19 / World Record
- Jallel Fabro: 336# @ 123 Teen Men 18-19 / World Record
- William Lumayas: 413# @ 148 Teen Men 18-19 / World Record / Most Outstanding Teen Men
- Gerika Kaaua-Acorda: 248# @ 220 Teen Women 18-19 / World Record / Most Outstanding Teen/Jr/Sub-Master Women
- Keoko Pasion-Almeida: 473# @ 148 Jr Men 20-25 / HI State Record / Most Outstanding Jr Men

Continued on page 8

66-437 Kamehameha Hwy., Suite 210
 Hale'iwa, HI 96712

PRE-SORTED
 STANDARD
 U.S. POSTAGE PAID
 Honolulu, Hawaii
 Permit No. 1479

PROUDLY PUBLISHED IN
Hale'iwa, Hawai'i
 Home of
The Proud Peacock



OFF da Island in Fiji

Chris Chun and Larisa Gadach of Waialua went island hopping and ended up on the Coral Coast of Fiji. They are pictured here at their favorite restaurant "The Wicked Walu" located at the Warwick Hotel & Spa. After their meal they were able to read a copy of the NSN to remind them of the good times back on Oahu's beautiful North Shore. To learn more about our OFF da Island campaign turn to page 23.

66-037 Kam. Hwy., Ste. 3
Haleiwa, next to Growing Keiki

Saccoccio & Lopez
ATTORNEYS AT LAW
Serving Haleiwa since 1984

*Bankruptcy
Personal Injury • Criminal Law
Landlord/Tenant
Traffic Offenses • DUI*

Family Law
*Adoption • Custody • Divorce
Paternity • Guardianship
Deeds, and Wills*

Notary Public

637-7611
VISA/MC Accepted

Paul & Nita

The Hale'iwa Family Dental Center, Ltd.



presents

"Comfort Dentistry"

including—

- Relaxation Glasses
- Television Glasses
- Caring Staff
- Special Medication to help you relax
- Laser Cavity Detection
- New Patients Welcome!

Your teeth are much too important to neglect.

Call: 637-9652
for your reservation

We're conveniently located behind First Hawaiian Bank
in the heart of Hale'iwa.

**July 13, 20, 27:
High Goal Polo
Maui v. Oahu ...
"The Rivalry
Continues"**

SUMMERTIME, AND THE POLO IS CRAZY!

Mokuleia Polo Fields,
Across from Dillingham Ranch
www.hawaiipolo.com

- **TAILGATING**
- **EXCITING POLO - SUNDAYS THROUGH AUGUST**
- **PRECISION SKYDIVING BY SKYDIVE HAWAII**
- **GREAT LIVE MUSIC**
- **FULL BAR / GOURMET FOOD**

GATES OPEN: 11 A.M.

Tickets: \$10 General; \$8 Military
\$25 Clubhouse Reserved



WAIALUA LIBRARY UPCOMING EVENTS

Writers' Group

Saturday, August 9, 2014 at 11am

Topic of the Month: "Write Something Humorous"

Used Book Sale

Saturday, August 16, 2014 from 9am – 2pm

Great Finds at Great Prices

Readers' Group

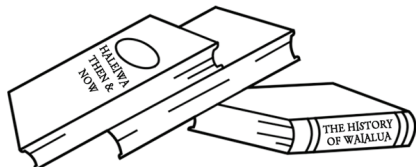
Thursday, August 28, 2014 from 9:30am – 11am

Pick of the Month: "Share Your Favorite Poem"

Children's Story Time

Every Saturday at 10am

Fun for All Ages!!



Free Waialua Bandstand Program

Sunday, August 3, 2014

4 PM - 5:30 PM

The International, Cultural and
Friendship Association (ICFA)

Present an afternoon program of:

Taiko Drumming

Hula,

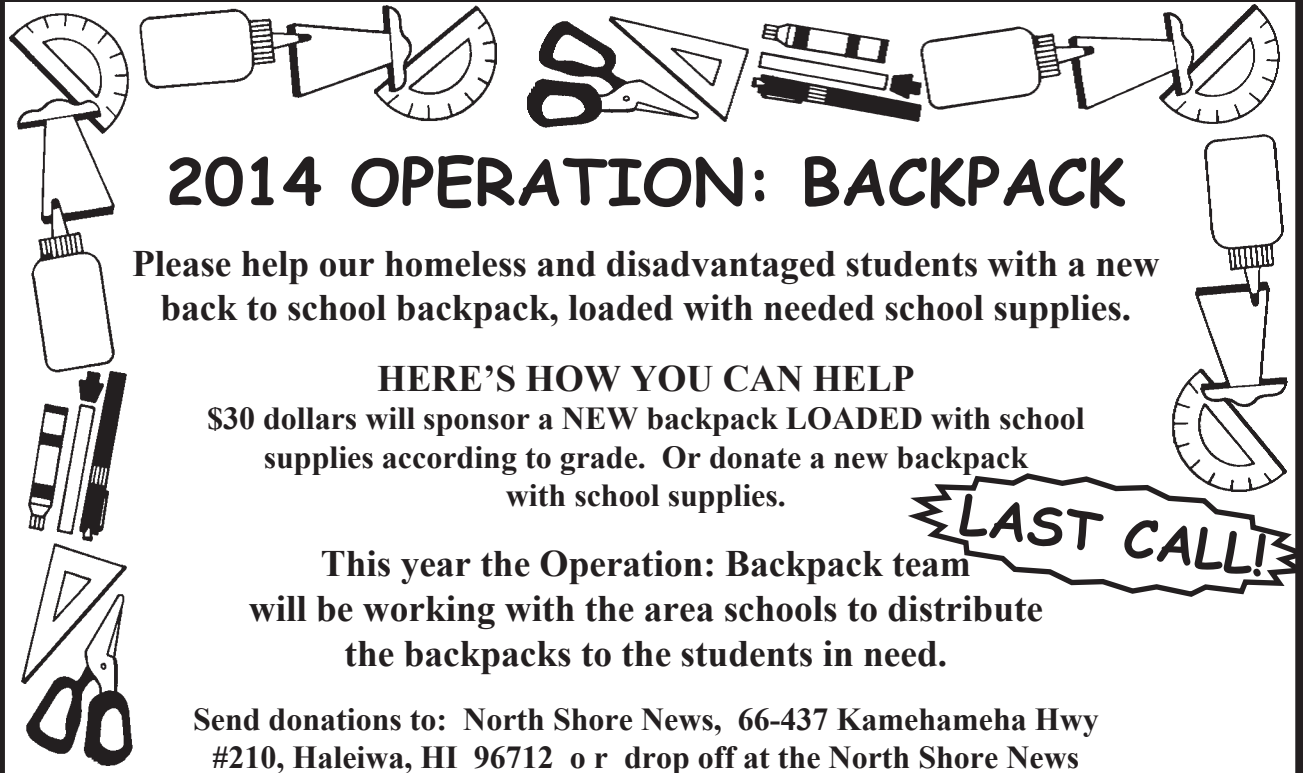
Harmonica

Line Dancing

Let's hope the rain holds off this year!

*Last year rain cancelled this
popular program!*

www.waialuabandstand.com



2014 OPERATION: BACKPACK

Please help our homeless and disadvantaged students with a new back to school backpack, loaded with needed school supplies.

HERE'S HOW YOU CAN HELP

\$30 dollars will sponsor a NEW backpack LOADED with school supplies according to grade. Or donate a new backpack with school supplies.

LAST CALL!

This year the Operation: Backpack team will be working with the area schools to distribute the backpacks to the students in need.

Send donations to: North Shore News, 66-437 Kamehameha Hwy #210, Haleiwa, HI 96712 or drop off at the North Shore News office, Tuesday-Friday, 12 noon-4pm. If NSN is closed drop off backpack donations downstairs at the Foot Massage or Papokus Hawaiian Restaurant.

Deadline is July 28. For more information or if you need your donation picked up call Linda at 637-3138.

Operation: Backpack is sponsored by North Shore News and Once A Month Church

MAHALO!



Photos by Trish Coder

Clean Up and Beautification

**Historic Haleiwa Beach Park
August 16th, 8 a.m. to 11 a.m.**

Drinks, Snacks, Music & Education
Tents, Gloves, Trash Bags, Pickers provided.

**First 100 adult volunteers to sign up @ AdoptABeachHawaii.org, will receive @ Noon: Lunch, Refreshments and T-shirts at Proud Peacock Restaurant-Waimea Valley.

Sponsors: Keep America Beautiful/Budweiser, Save The Sea Turtles International, AYSO, Friends of Haleiwa Beach Park, North Shore Chamber of Commerce, Green Tea Hawaii, Green World Farms, McDonalds, Waimea Valley, & more.



Council Chair
Ernie Martin
Serving You in District 2

Aloha,

My name is Vance Farrant and I was fortunate to be raised on the beautiful North Shore. I am in the Class of 2017 at Kamehameha Schools Kapalama. This summer I had the opportunity to intern in the office of Council Chair Ernie Martin and have developed a community project as a part of my internship. As a lifelong resident of the North Shore I am excited to work with community groups and individuals to make a positive impact on our community.

My chosen project is to work with the community to restore and improve the Ke Ala Pupukea Bike Path, a treasure in our beloved North Shore that runs from Three Tables to Oopuola Street. Visitors and locals alike use this path daily. The Ke Ala Pupukea Bike Path is now almost 20 years old and is in need of maintenance. That is why I am developing a plan for revitalization of the bike path and would greatly appreciate input and support from community members like YOU!

I have met with community members who have concerns about the current condition of the bike path and have recently traveled the length of the path to identify areas of concern myself. If you have concerns about specific areas of the Ke Ala Pupukea Bike Path please email your concerns to malamak-ealapupukeabikepath@gmail.com. Please include the location and a description of your concern in the email. I will be compiling these concerns and present them in one organized document to Chris Sayers, the Bicycle Coordinator for the City and County of Honolulu.

There will be an informational meeting about the Ke Ala Pupukea Bike Path Revitalization Plan on Tuesday, July 29th from 6:00 – 7:30 p.m. at the Sun-

set Beach Recreation Center. This meeting provides an opportunity for members of the community and community groups to come together to discuss how we can work together to improve the condition of the bike path. Please take the time to attend the meeting for more specific information on the plan which includes opportunities for community members and groups to adopt sections of the bike path to assist in the restoration and maintenance of the path. Please invite your friends and neighbors to attend as we all work together to care for Ke Ala Pupukea Bike Path.

Please join me in my quest to do more than just restore the Ke Ala Pupukea Bike Path. Let's work together to make it better than it ever was before!

Mahalo,
Vance Farrant
Intern in the Office of Council Chair Ernie Martin

Ke Ala Pupukea Bike Path Revitalization Plan

Meeting Tuesday, July 29,
6:00 p.m.-7:30 p.m.

Sunset Beach Recreation Center

SIX SPECIAL NIGHTS

MONDAY \$2.95 BEER BOTTLES & DRAFT	TUESDAY \$5.00 OFF PIZZA REGULAR OR LARGE	WEDNESDAY SALAD NIGHT 1/2 OFF SALADS
THURSDAY \$3.95 NIGHT \$3.95 SLICES, SALADS, MAI TAI'S, WINE & BEER	PIZZA BOB'S	
FRIDAY NIGHT \$7.50 BURGER & FRIES <small>Dine In Only - 4:00 PM Until Closing - Haleiwa Town Center - 637-5095</small>		SATURDAY \$4.50 NIGHT \$4.50 SLICES, SALADS, MAI TAI'S, WINE & BEER

\$2.00 Off with this Coupon
Some Restrictions Apply. See Restaurant for Details.
When Ordering Regular Priced Items. Good Anytime. One Coupon Per Person.
Can Not Be Combined with Other Discounts. Expires 09/30/2014.



Your ONE stop summer snack stop!

www.pkbsweets.com

Top 10 reasons to visit us this summer!

1. Home of the Snow Puffy
2. Right in Waialua town
3. Always made locally
4. Sada's Malassadas
5. Right on the way to the beach
6. Convenient parking
7. Friendly service
8. One of a kind bake shop
9. Freshly made sandwiches
10. 50% discount from 6-7pm daily

Located at 66-945 Kaukonahua Road, right next to Paalaa Kai Mini Mart.
Please visit our website at www.pkbsweets.com for more information!

First Wind and Rainbow School Team for Fence Improvement

Rainbow School provides the communities in the Ko'olaupua and North Shore areas with quality education for preschool students. This non-profit is licensed by the State of Hawaii and also has the distinction of being the first nationally accredited preschool in the state of Hawaii. Steve Albert, Board Chair of Rainbow Schools, has been overseeing the program since its beginning in 1972. Recently, he has been focused on rebuilding the Kahuku playground. A priority has been to fix the falling fence that secures the playground area. On July 12th, staff from First Wind's Kahuku Wind Project volunteered to rebuild and restore a fence section that was in poor condition. First Wind recognizes that Rainbow School offers an important benefit to families and is pleased to provide the service of many hands coming together to complete a task. Mahalo to Rainbow School's Cindy Barley, Executive Director, and program staff for enriching our keiki's lives and to Steve and First Wind volunteers for a job well done! (Pictured left to right: Steve Albert, Nick Clements, Crystal Kua, Faviana Wells, Dan and Sophie Wells, Carolyn Unser and Marshall Hartle)



Haleiwa Evangelical Mission International
 Come and join us
 Sunday's at Waiialua
 Elementary School Cafeteria
 Sunday School at 9:00 am
 Worship Services at 10:00 am
 For Prayer
 Call 637-4567
 Blessed to be A Blessing
 Child Care Provided

Vote August 9th!
Family, Prosperity, Legacy
FAMILIES THAT SURF TOGETHER STAY TOGETHER

KUA AINA
The Best!
 · IN HALEIWA ·
637-6067
 · IN HONOLULU ·
591-9133
 AT WARD CENTRE
HALEIWA · TOKYO · HONOLULU · LONDON

RICHARD LEE FALE SENATE

www.RichardFale.com
 Paid for by Friends of Richard Fale PO Box 316, Hauula, HI 96717



State Representative
Richard Lee Fale
 Serving You in District 47

Seven Days of Survival

While large-scale disaster planning and preparation is a primary responsibility of our local government, everyone needs to do their part to ensure that their family and loved ones are safe, are free from harm, and are prepared to survive on their own for at least 7 days here in our islands in the event of a large-scale disaster.

There are numerous links that can help guide you as you personally prepare for the next disaster. Here are just a few!

Prepare, Plan, Stay Informed-Be Ready! <http://www.ready.gov/>. This website is one of the most comprehensive sites out there. Some of the preparedness tools you will find here include:

- How to initiate a disaster plan for your family
- How to build a disaster preparedness kit
- How to get involved and support community preparedness
- Emergency preparedness publications
- Links to Ready.Gov via social media
- How to plan for and protect your business
- Educational fun and games for teaching children

State of Washington –Plan in a Year link http://www.emd.wa.gov/preparedness/documents/2011_PIY_Booklet.pdf This “Prepare in a Year” booklet shows you how one hour of disaster preparedness activity each month will better prepare you for a disaster when it strikes. Their 12 month breakdown includes:

- An action plan
- An “Out-of-Area” contact
- Water
- A 72 Hour Kit (For Hawaii we recommend a 7-day kit)
- Storing copies of important documents
- Preparing for extended events
- Under the bed supply storage
- Utility safety
- Drop, cover, and hold
- Fire safety
- Sheltering in place
- Home hazard hunt

Our communities are especially susceptible during natural disasters because we are largely coastal, we experience severe flooding conditions beyond the scope of hurricane season and we have limited access in and out of our communities.

We are grateful to have community leaders who have gone through special training to get these entire

communities prepared! Mahalo to leaders in Ka’a’awa, Hau’ula, La’ie and Hale’iwa who have already done some heavy lifting to help get the conversations started about being prepared within our community. I hope you and your families will take some time this summer before everyone goes back to school to set up your family emergency preparedness plan and extending the conversation to your neighbors and community members as well. If we all work together to get ourselves and our families ready for at least seven days of survival, we can be that much more ready and able to help others should a disaster hit.

Polynesian Treasures

Hawaii's largest selection of Polynesian handicrafts and Hawaiian inspired gifts.

North Shore Marketplace * Haleiwa, Hawaii
 Open daily from 10 am * (808) 637-1288

SUMMER SPLASH SPECIAL

Purchase (3) pastries and get 50% OFF any cold drink

BONUS
 Get 10% discount on purchase of 1 dozen of our famous Snow Puffies!

Simply clip and show this coupon to one of our friendly cashiers. Offer cannot be combined with other promotions, discounts, or daBest VIP card. Offer valid until August 5, 2014.



**Representative
Lauren
Matsumoto
Serving You in District 45**

Laden in red, white and blue, people typically spend their Independence Day relaxing at barbecues, gazing at fireworks and laughing with loved ones. I chose to spend my July 4th this year participating in one of the most well-known Independence Day events in the islands: The 36th Annual Hui O He'e Nalu Paddleboard and Stand Up Paddle Race. While the race is a big hit throughout the community every year attracting hundreds of paddlers, this year was particularly successful with over 650 competitors! It is the largest paddleboard race in the world! After paddling along the North Shore, Mo Frietas crossed the finish line first, and behind him was a close battle between North Shore local Andrew Logreco and reigning Molokai champ Travis Grant. I was also very proud of my father, Michael Cheape, and my brother, Matthew Cheape, who both placed 3rd in their age division. While the quickest time for the women went to Penelope Strickland, I had a great time participating in this exciting event with my husband, family, and the people of my community. The Fourth is full of fun activities and celebrating the day with family is important, however it's even more important to take time to reflect on what Independence Day signifies. It marks the day that the Continental Congress adopted the Declaration of Independence in 1776 in Philadelphia, Pennsylvania. One of the most powerful excerpts of this founding document is, "We hold these truths to be self-evident, that all men are created equal, that they are endowed by their Creator with certain inalienable Rights, that among these are Life, Liberty and the pursuit of Happiness." While I certainly can identify with the implications of this paragraph on the roles of legislators, it's important that we all identify with this as American citizens. The Declaration of Independence expressed the ideals that serve as the foundation of America, including freedom, liberty and equality. While we tend to take for granted these privileges in day-to-day life, Independence Day is the perfect occasion to recognize and be grateful for these aspects.

If you have any questions about anything that happens either in our community or at the Capitol, please contact me by email at RepMatsumoto@Capitol.Hawaii.gov, by telephone at (808) 586-9490, or by stopping in at the Capitol in Room 303. I always look forward to seeing and hearing from you!

Continued from page 1



Edwin Manmano & Donna Acorda

Adam Foster: 562# @ 220 Jr Men 20-25 / HI State Record
Nicholas Montibon: 490# @ 220 Class 1 Men / Most Outstanding Class 1

Deadlift:

Ciara Balidoy: 341# @ 132 Teen Women 18-19 / HI State Record
Ashley Carillo: 380# @ 132 Jr Women 20-25 / HI State Record / Most Outstanding Teen/Jr/Sub-Master Women
Jacob Valmoja: 518# @ 132 Jr Men 20-25 / HI State Record / Most Outstanding Jr Men
Rance Balidoy: 573# @ 198 Jr Men 20-25
Jacob Barit: 501# @ 242 Jr Men 20-25
James Valmoja: 457# @ 132 Master Men 47-53 / World Record
Edwin Manmano: 717# @ 165 Open Men / World Record / Most Outstanding Open Men

Also entering from WHC was Dale Yoshizu, retired teacher from Waialua Elementary School. Dale entered the 123 weight class Master Men 54-60 bench division. He ended the day with a 187# bench press, giving him the 1st place award.

So what's next for this group of lifters? A little well-deserved RnR, then it's back to training. A couple of them will be competing at the USPA Team Metro Push & Pull competition on August 24, while a group of them will be headed to Las Vegas in November for the WABDL Worlds Championships, to compete on the platform with other lifters from all over the world.

Team Caution would like to thank all those who have supported them through their training process. They would especially like to thank Jerry and Jerry's Pizzamill and the Woolley Brother Screen Printing for sponsoring the team and for the awesome t-shirts. MAHALO FOR THE SUPPORT!

WHO DO YOU KNOW THAT IS SICK?

dōTERRA[®]
ESSENTIAL OILS ARE CHEAPER
SAFER & MORE EFFECTIVE MEDICINE

FREE CONSULTATION & SAMPLES
WWW.ESSENTIALOILS.EXPERT

Call Heidi at (808) 638-4774

Olakino Maika'i

(Good Health)

by Naty Camit Hopewell

Sun and Skin Cancer

It's summertime and people are out soaking in the sun. This is exhilarating but can become a contributor to skin cancer, which is the most common cancer in the U.S. The more common skin cancers are basal cell and squamous cell carcinoma.

80% of all skin cancers is basal cell carcinoma (BCC). BCC is slow growing and frequently seen in fair-skinned people with a history of sun exposure. It usually occurs in sun-exposed area, such as the face, ears and chest; 70% of which occur on the face. The lesion often bleeds and patients complain that it never heals. The diagnosis is made by byopsying the lesion. Treatment is removal of the entire lesion. If BCC occurs in cosmetically sensitive areas, such as the nose or eyelid, "Mohs" surgery is done, where a layer of tissue is removed and checked under the microscope for cancer cells. This is done repeatedly until the tissue is clear of cancer. After occurrence of BCC, there is up to a 44% risk of developing another BCC within the next 3 years. Once the cancer is removed, signs of recurrence include breakdown of a previously healed scar, development of crusting or enlargement of a scar, formation of a lesion within the scar and ulceration of the scar.

Squamous cell carcinoma (SCC) accounts for 16% of all skin cancers. SCCs grow faster than BCCs and can become large and cause bleeding and ulceration. SCC usually develops in sun-exposed areas, such as the head and neck. Although the most common cause of SCC is UV exposure from the sun, it can also result from immunosuppression following organ transplant or HIV. SCC in certain locations, such as the scalp, nose, eyelid, are associated with higher rates of spreading. Treatment is removal through a variety of methods.

The most effective approach to skin cancer is protection from UV rays. Avoid peak sunlight (10 a.m. – 2 p.m.). Wear protective clothing. Apply sunscreen with SPF 30 or higher 20 minutes before sun exposure. Then, reapply every 2 hours; more often if you've been in the water or sweating.



Stay cool and comfortable while managing your electric bill

Pick-up your FREE copy of "Hawaiian Electric's Cool Tips for Home and Work," at our walk-in Customer Service centers at 1001 Bishop Street - Lobby, 820 Ward Avenue, and all eight City Mill locations on O'ahu!



For more information, call 543-7511.



Hawaiian Electric

hawaiianelectric.com



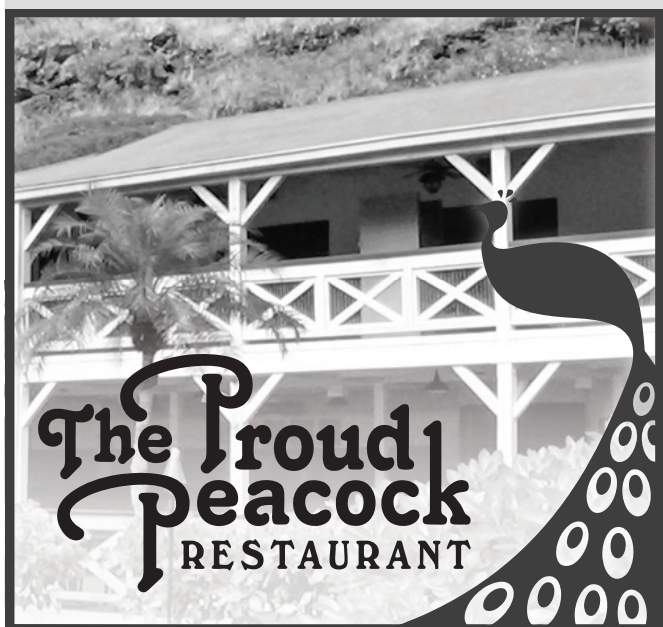
The Voice of Experience for State Senator

Tested and true in the legislature, community, and business.

Colleen
MEYER
STATE SENATE

239-8019/h email: VoteColleenMeyer@gmail.com
342-3155/c Website: ColleenMeyer.com

Paid for by Friends of Colleen Meyer • P.O. Box 4199 • Kaneohe, HI 96744



WAIMEA VALLEY

HI'IPAKA LLC

WHERE HAWAII COMES ALIVE

KALO & AWA FESTIVAL

August 9 • 8:30 AM - 4 PM

Tastings, Demonstrations, Local
Vendors, & More

Free & Open to the Public

2014 SUMMER CONCERT SERIES HO'OKANI KE KĪKĀ KILA PLAY THE STEEL GUITAR

August 23 • 1 - 5 PM

Featuring Timi Abrigo •
Jeff Au Hoy • Eddie Palama
Waimea Valley Pikake Pavilion Lawn

THE PROUD PEACOCK

Thursday - Saturday:

Happy Hour 5 - 6 PM,

Dinner 5 - 10 PM

Sunday:

Brunch 10 AM - 2 PM

On the North Shore Across from
Waimea Bay • Open 9 AM - 5 PM Daily

Call: (808) 638-7766

WAIMEAVALLEY.NET

Home Improvement



Greekz Plumbing
License# C-32939
372-1820

GOT BOOKS?

While you are doing your summer cleaning, why not donate your new and gently used books to Once A Month Church. Bring your donations to the North Shore News office, (above the Haleiwa post office) 637-3138

ROBERT M.
PAGAN CONSTRUCTION COMPANY



(808) - 499 - 8617
New construction / Additions / Remodels - Lic # 32866 Bonded / Insured
www.robertpaganbuilders.com




Jay Oku
Loan Officer

(808) 393-0707
Office: (949) 281-3076

jay.oku@academymortgage.com
academymortgage.com/jayoku

1833 S. Coast Highway, Suite 210, Laguna Beach, CA 92651
NMLS #218211 | State Lic: CA #CA-DOC218211, HI #HI218211
Corp Lic: CA #4170013, HI #HI-3113 | Corp NMLS #3113 | Licensed by the Department of Business Oversight under the California Residential Mortgage Lending Act



No job too big or small.
Located at the Waialua Sugar Mill.



**fab
fab**
808

**CERTIFIED WELDING
FABRICATION & REPAIRS
OF ALL METALS**

628.8719

Multi Trade Handyman Service



Remodeling
Carpentry
Tile
Painting
Windows, Doors

Drywall
A/C, Ceiling fans
Cable, Phone lines
Screens
Door knobs & Locks

* Everything for the home or office *
Hm. (808) 638-7849 Cell (808) 551-4783
Robert Snelling Oahuhandyman@aol.com

Editor's Choice

Growing Good Corn

Author Unknown

There once was a farmer who grew award-winning corn. Each year he entered his corn in the state fair where it won a blue ribbon.

One year a newspaper reporter interviewed him and learned something interesting about how he grew it. The reporter discovered that the farmer shared his seed corn with his neighbors.

"How can you afford to share your best seed corn with your neighbors when they are entering corn in competition with yours each year?" the reporter asked.

"Why sir," said the farmer, "didn't you know? The wind picks up pollen from the ripening corn and swirls it from field to field. If my neighbors grow inferior corn, cross-pollination will steadily degrade the quality of the corn. If I am to grow good corn, I must help my neighbors grow good corn."

He is very much aware of the connectedness of life. His corn cannot improve unless his neighbor's corn also improves.

So it is with our lives. Those who choose to live in peace must help their neighbors to live in peace. Those who choose to live well must help others to live well, for the value of a life is measured by the lives it touches. And those who choose to be happy must help others to find happiness, for the welfare of each is bound up with the welfare of all.

The lesson for each of us is this: if we are to grow good corn, we must help our neighbors grow good corn.

It is possible to give away and become richer! It is also possible to hold on too tightly and lose everything. Yes, the liberal man shall be rich! By watering others, he waters himself.

—From the Bible,
Proverbs 11:24-25

John Borsa Builders

License BC-10847

Specializing in Septic Tank Installation

Ph: 255-5101

New Package & Custom Home
Grading

Excavation; Backfill

borsabuilders@gmail.com

Since 1981

Scott Daniels

Lic. #C-22032

Lic. #EJ-8209



**BEST
ELECTRIC**

Best workmanship - Best service - Best prices

67-440 Kekauwa St.
Waialua, HI 96791

bestelec50@gmail.com
Cellular (808) 384-5099

Haugen Construction LLC

Projects Big & Small

Call Steve

542-9269

**J.B. TILE &
CARPET**

JOHN BURTCHE

Free estimates

25 years experience

(808) 226-1023



LC Development

New homes, remodels,
kitchens, baths, decks,
custom metal fab.

BC 15645

342-8350 • 227-2323

HOME IMPROVEMENT BULLETIN BOARD

N-C PLUMBING & SUPPLY

Cont. Lic. No. C-8913



- RESIDENTIAL & COMMERCIAL SALES & SERVICE
- CONTRACTING & DESIGN • HOME PLUMBING SERVICE
- PLUMBING FIXTURES, HEATERS • FREE ESTIMATES

Nestor P. Calilao (Owner) Bus: 637-8662
 P.O. Box 769 Res: 638-5157
 Waialua, HI 96791 Cellular: 372-8718



LIC. #AG 18275

GENERAL ENGINEERING CONTRACTOR

Full Service Sitework Contractor
Septic Systems & Tanks
 25 yr. exp.
Michael Cowper 638-7200
 cowperhawaii.com

Munden Design & Build

Lic.#BC19632

Design • Plans • Permits • Construction
 Additions & New Residences
808 391-8616

Providing quality work since 1978



Ernie Doak Plumbing, Inc.

Quality without Compromise

NEW CONSTRUCTION • RENOVATION • SOLAR
Serving Oahu's North Shore for over 20 years

ERNIE DOAK cell **295-7943**
 Lic. #CT-22113 office 638-8620
 Lic. #PJ-10630 erniedoakplumbing@yahoo.com

NORTH SHORE FIX IT

Journeyman Capacity
 Concrete, Framing (wood, metal)
 Light Electrical, Plumbing,
 Drywall-Hang, Tape & Texture
 Drywall Patching, Painting, Pressure Wash
 25 yrs experience - (808) 222-9381

The Lawn Ranger-

*We put the law back into your lawn,
 no yard too hard ,
 no lawn to far gone...*
**Trees, hedges, hauling,
 multi acre properties.**
 Fully insured, 25 years experience.
258-6439



NORTH SHORE LAWN SERVICES
 No job too big or too small we do it ALL.
OLE SEYLER
 Free estimate
 Mowing, Weed Whacking, Hedge Trimming,
 Small Trees, Full Clean Up
 59-720 Pupukea Plc.
 (808)375-7178
 olafseyler@gmail.com

ILAN FREITAS

☎ 808 372-8848
 @ any part of the island
 ✉ greenwaveslandscaping@yahoo.com

free estimates
 yard maintenance
 grass planting
 sprinkler system installation & repair
 landscaping design & renovation
 dirt removal
 commercial & residential
 no jobs are to big or too small

www.oahuscreens.com



HOLOHOLO SCREENS, LLC

New window installation	Sliding/swinging doors
New screens/re-screens	Screen door roller repair
Pet proof screens	Pet grills and doors
Porch enclosures	Solar screens

FREE ESTIMATES • (808) 783-8764



License No. C28113

Commercial • Residential
 Septic • Solar • Design

Mike 630-1407
 Steve@offshoreplumbinginc.com



Blood Bank of Hawaii
Give Blood. It's Safe. It's Simple. It Saves Lives.

It's not too late to Save our Summer! With only one month left, make it count and make an appointment to save lives. Donate any time before September 1st and enter to win a 4-night/5-day getaway to California's most popular theme park for a family of four. Put blood donation on your list of things to do before the end of summer. You don't need a computer to make an appointment, go mobile! Call us at 848-4770 or use your phone to visit BBH.org.

Friday, August 1, 2014

Wahiawa General Hospital - Bloodmobile

7:30 am - 2:00 pm

Monday, August 25, 2014

Waialua Intermediate and High School - Library

7:30 am - 2:00 pm

Please note: Drives are subject to change. Call 848-4770 or visit www.BBH.org to schedule an appointment or check on drive information.

Sign up to save lives today. The requirements to be a blood donor are simple:

- Be in good health
- Be 18 years of age or older (17 with signed Blood Bank of Hawaii consent form)
- Weigh 110 pounds or more
- Bring a valid photo ID with date of birth

Hawaiian Electric continues support of STEM education

To date in 2014, Hawaiian Electric has contributed more than \$88,000 in support of science, technology, engineering, and mathematics (STEM) education programs that benefit Hawaii educators and students while inspiring a next generation workforce capable of competing in the science and technological industries.

Recent contributions include:

- Hawaii Space Grant Consortium, for the Lacy Veach Day of Discovery in October. Since 2002, Hawaiian Electric has sponsored this annual event which honors NASA Astronaut Charles Lacy Veach while bringing together organizations, businesses and individuals to share their STEM research and activities with educators, students and the general public.

- Hawaii FIRST® LEGO® League, for the state championship on Oahu in December. Since 2006, Hawaiian Electric has partnered with FLL to hold these team robotic challenges which promote science and technology to upper elementary and middle school students while developing student interest to pursue STEM studies and careers. About 80 volunteers from the company also assist onsite at the state tournament each year.

- University of Hawaii Foundation, for the Hawaii State VEX Championship in December. Hawaiian Electric has been the title sponsor of this scholastic robotics tournament since its inaugural championship event in 2013. In addition to enabling middle and high school participants to learn STEM concepts, VEX robotics builds valuable team work, problem solving, communication and time management life skills.



Makua Rothman wins the first event in the ASP Big Wave World Tour



BANZAI NORTH SHORE WIRELESS

New daddy Makua Rothman won the first event in the ASP Big Wave World Tour. Rothman was a Hawaiian wild card in the Billabong Pico Alto Peru contest and pulled off an incredible over the ledge ride that will never be forgotten. "I thought I was going over the falls, to tell you the truth," Rothman told the ASP. "But I figured, 'Why not try to hang on?' I took a page out of (fellow Hawaiian Shane) Dorian's book." He won 12,000 points and \$12,000 in prize money. The waves were big and getting bigger through out the day. Rothman was able to score high point rides all the way through and avoiding any injury and while still wearing his hospital bracelet. South Africa's Grant "Twiggy" Baker suffered a broken ankle and was one of the many that had to employ their inflatable safety vests. There is a series of five events scheduled on the big wave tour, this was the first to go off. Surfers wait for the first three from April to August and another two from October to February.

Following are the results.

1. Makua Rothman (Hawaii) 27.33 \$12,000
2. Anthony Tashnick (Santa Cruz) 22.00 \$8,000
3. Shawn Dollar (Santa Cruz) 20.26 \$5,000
4. Gabriel Villaran (Peru) 16.80
5. Grant Baker (South Africa) 16.00
6. Greg Long (San Clemente) 7.00

North Shore surfer Honolua Blomfield is NSSA National Champion. Kids from all over the U.S.A. in the National Scholastic Surfing Association competed in Huntington Beach for the prestigious titles. Blomfield won the explorer Womens Longboard event competing against girls of all ages and killed it in the final 15.33 to Jazmine Dean's, Florida, 10.70 score. Blomfield competes in both shortboard and longboard competitions and is great at both, she made the final in her age group in shortboarding, a 4th place. Congrats to the North Shore surfer!

EXPLORER WOMENS LONGBOARD (all ages)

1. Honolua Blomfield-Haleiwa, HI 15.33
2. Jazmine Dean-St. Augustine, FL 10.70
3. Kelta O'Rourke-Kilauea, HI 9.13
4. Ocean Tsutsui-Haleiwa, HI 8.43
5. Georgia Cook-Franklin, TN 7.57
6. Frankie Seeley-Malibu, CA 6.24

Also at Nationals Sunset Beach hometown surfers Raios Hayes won the Aloha award and Zoe McDougall received the Carissa Moore Rookie of the Year award.

The National Scholastic Surfing Association (NSSA) is a nonprofit organization whose mission is to encourage and assist its members in their interest

to learn and develop the fundamentals and skills of surfing competition while competing in structured and quality events. The NSSA promotes the qualities of discipline and competitive excellence while supporting the merits of academic achievement to young surfers. The NSSA strives to provide a fun surfing experience for all of its members. In Hawaii it is put together by another North Shore resident Bobby Parker.



Honolua Blomfield

★

Video ❁ Media

❁ Social Media ❁

Banzai Productions!
Let us Promote You!
All Video & Media Needs
& Special Kamaina Rates
Web video increases your
impact by 35%! Don't wait
30 Years of Experience
in Marketing

808-781-2535

★



Ron Artis II

Is traveling to Seattle this August to "Make some Music". Ron and his Brother Thunderstorm have been performing Non-Stop around the island this last year, and now it's growing over the ocean. But before they set their sails, Ron has 2 more Concerts planned in Honolulu, for fundraising and for the love of music.

- August 1 - Hawaiian Brians - 7 p.m.
- August 3 - Mililani Town Center - 4 p.m.

for more information about the tour, and upcoming concerts visit: ronartisii.com

Also anyone looking to support the tour can also donate here:

Ron Artis II, 59-543 Alapio Rd., Haleiwa, Hawaii 96712



TurtleBayResort.com

NALU
KINETIC SPA



Nalu Kinetic Spa & Fitness Center Memberships

"Malama Pono"

**Embrace Your Mind and Body
We are excited to bring to you
membership opportunities
at Nalu Kinetic Spa's Fitness
Center and Turtle Bay Resort!**

- Group exercise classes included. (Sunset Yoga, Beach Bootcamp, Power Core, Zumba, Kickboxing, H.I.I.T. Circuits, Total Body Conditioning, many more!)
- Access to Spa locker rooms with showers, sauna, steam
- Discounts at restaurants, spa services, other activities
 - Outdoor pool and hot tub access
 - Annual Golf and Tennis Memberships
 - Personal Training Packages

Please inquire with Jay Murnane, Fitness Manager at 808.447.6692 or by email, jmurnane@turtlebayresort.com



Dear Editor,

I am Andrea Anixt, a nearly 40 year resident of Ka'a'awa, Member of Disaster Preparedness Resiliency in Place Planning Team with Red Cross, and OahuMPO Citizens Advisory Committee member for Ka'a'awa, plus on the Board of Directors of the Ka'a'awa Community Association.

Kamehameha Highway's North Shore Corridor from Hale'iwa to Kahalu'u is in the tsunami inundation zone for too many of its 35 miles... New studies are coming out this summer or fall that are showing even greater inundation and changing evacuation planning.

There is only the one through road for that 35 miles. It has only two lanes; is outdated for current traffic; development plans propose doubling the traffic; tourist traffic is expected to be 7.5 million by 9 years from now annually on Oahu, more than half come to this little road; it has only 2' eroding shoulders in places and large boulders try to keep it from being undermined by the ocean; many 2 lane narrow bridges; and is closed frequently by accidents, flooding, etc., and gridlock among other things, especially through KoolauLoa's Ka'a'awa.

I was at a meeting of communities involved in disaster preparedness planning a few months ago. This was held in Ka'a'awa, but we discussed all areas represented at the meeting. One of the issues was that many of our schools and fire stations were built in the inundation zone and as irresponsible as that seems in 'Planning', it is proposed to do even more of same right now!

Even the Deputy Director of Department of Emergency Management felt it was a bad idea to put a new fire station proposed for Hau'ula on Kamehameha Highway by the shopping center because it is just feet from the current inundation zone.

Based on my experience of Iwa and Iniki in Ka'a'awa, all new public safety buildings should have to be built as far from the coastline as possible, especially fire stations and schools. Laie is adding to its population rapidly and building a hotel and thousands of square feet of commercial space. It does not even have a fire station for nearly 7,000 people. From 2000 to 2010 Census Laie population grew 34%. Again, inadequate Planning seems evident in its lack of a fire station already.

People have been advised that we will not see Red Cross or emergency services for at least 7 days in Ka'a'awa, IF the road is there...I have seen the coast road on Kauai by Poipu after Iniki; it was a black, broken ribbon tossed inland many feet. We fear that

our only road to anywhere will meet this same fate with good reason. We were without electric power for about a week both times. People will die at about 100 hours with no water. Resident and tourist population increase has made it much more unsafe in the last 23 years since a hurricane hit Hawai'i, even as obliquely as Oahu got it, we had a lot of damage and people lacking supplies. My solar panels were never seen again, my roof had an 18' by 15' hole, my neighbor had 3 trees fall on his house, etc.

Many older schools are involved and will not be able to be emergency shelters for hurricanes or tsunamis. This is a planned disaster more than disaster planning I am finding out.

Andrea Anixt

Victoria's Sweets
your local snack supply

Party Favors for all Events

birthday parties - babys 1st - graduations - any event
also available

*Full Candy Shop set up *Crack Seed Candy bar

(808) 636-7885

FIND US ON FACEBOOK!
WWW.FACEBOOK.COM/VICTORIAS.SWEETS.9

Subscribe to the North Shore News

The North Shore News is delivered free to residents in Mokuleia, Waialua, Haleiwa, Kawaiiloa, Waimea, Pupukea, Sunset, Kawela, Kahuku, and Laie. A subscription is available for other cities on Oahu, Outer Islands, or Mainland U.S. for just \$35.00 per year for 25 issues for delivery by standard bulk mail (2-3 weeks Mainland) or \$55 delivered by 1st class postage (3-5 days) or email \$25.00 for 25 issues in color. You may subscribe by using check, money order or credit card (VISA, MC).

Mail North Shore News to:

Recipient _____
Address _____
City _____
Credit Card # _____
Expiration _____

Return this form with payment to:
North Shore News
66-437 Kam. Hwy. #210
Haleiwa, HI 96712

CLIP

Kahuku High strengthens athletic program with national certification



Gillian Yamagata, athletic director at Kahuku High and Intermediate, has demonstrated the highest level of knowledge and expertise in interscholastic athletic administration, earning the national distinction of Certified Athletic Administrator.

The National Interscholastic Athletic Administrators Association made the announcement July 14, placing Yamagata in an elite group to reach this level of professionalism. In 50 states, there are only 5,575 CAAs total.

Yamagata's commitment to promoting the professional ethics, practices and standards of athletic administration, and benefitting the Kahuku school-community with her leadership helped her achieve CAA status.

"This comes with excitement and relief," Yamagata said after the months-long process.

Certification is granted after an intense evaluation of a candidate's experience, professional contributions and educational background followed by a rigorous daylong written exam.

"This certification represents Gillian's professionalism and dedication to her career as an athletic director and to our athletes," said KHIS Principal Pauline Masaniai.

"I am proud of those who take the initiative to grow in their field, and strive to build effective and efficient programs," said NIAAA Director Sheri Stice. "I am confident that they are committed to your students and education."

**SUNDAY NIGHT IS
FAMILY NIGHT!**

AT SUNSET BEACH CHRISTIAN CHURCH



FREE DINNER & A MOVIE

SUNDAYS @ 5pm June 8 - July 27

sbccs.org | 59-578 Kamehameha hwy



Call for daily specials

840-0223

Phone orders welcome

Come and enjoy some local kine grindz!!

Located next to Haleiwa Post Office

MAHI'AI 2015 MATCH-UP

AGRICULTURAL BUSINESS PLAN CONTEST



MAKE YOUR AGRICULTURAL DREAMS A REALITY

Submit your agricultural business plan by **August 15, 2014** for a chance to win an **agricultural lease*** from Kamehameha Schools and **start-up money** from Ke Ali'i Pauahi Foundation.

* Land will be made available with free ground lease rent for up to 5 years, but contestants must pay Real Property Tax for that time. After year 5, contingent on the winner successfully implementing their plan per milestones to be mutually agreed upon by lessee and KS, the land will be leased for a longer term at normal KS agricultural lease rates.

APPLICATIONS AVAILABLE
July 1, 2014

REGISTRATION DEADLINE
August 15, 2014



KAMEHAMEHA SCHOOLS® KE ALI'I PAUAHI FOUNDATION

To apply or for more information, visit www.pauahi.org

Coming this summer: Mahi'ai Match-Up 2015 Agricultural Business Plan Contest

Kamehameha Schools and Ke Ali'i Pauahi Foundation (Pauahi Foundation) – the nonprofit foundation of Kamehameha Schools – are teaming up once again to promote and celebrate Hawaii's agricultural industry through their second Mahi'ai Match-Up agricultural business plan contest.

Mahi'ai Match-Up 2015 is being hosted ultimately to 1) help Kamehameha Schools find farmers to increase food production for the local market, and 2) grow awareness for the Pauahi Foundation's efforts in providing agricultural grants and post-high scholarships.

"This is truly an effort to celebrate and promote agriculture in Hawai'i. We strongly believe that by building excitement and a strong support network around agriculture and agriculture education we will see multiple benefits for our community and for our state," said Keawe Liu, executive director of Ke Ali'i Pauahi Foundation.

Translated as farmer match-up, the eight-month contest was started in 2013 to support Hawaii's agricultural industry. After months of working with applicants – which includes providing contestants with training in business plan preparation and presentation skills – Kamehameha Schools and the

Pauahi Foundation announced three winners at the contest's culminating event, the Mahi'ai Match-Up Gala, held on February 22, 2014.

Last year's first place winner, a North Shore operation called Holoholo General Store, received \$25,000 in business seed monies from the Pauahi Foundation and five years of waived rent from Kamehameha Schools to expand its business in Hale'iwa.

"With this opportunity that's been provided to us by Kamehameha and the Pauahi Foundation, it really allows us to be innovative in thinking of other things that we can do instead of being so set back by the initial investment in just getting going on a farm," said Holoholo General Store co-owner, Jill Nordby, via interview.

Farmers with innovative ideas and interested in farming and food production for Hawai'i are encouraged to apply for Mahi'ai Match-Up 2015 on July 1, 2014. The deadline to apply is August 1, 2014.

For more information, please visit www.pauahi.org/mahiaimatchup.



Mahalo Aloha Harvest

Every week drivers for Aloha Harvest Hiram and Kiki (pictured on left) make a trip around the island rescuing food to feed Hawai's hungry! The North Shore Food Bank would like to say Mahalo to Hiram and Kiki for their weekly deliveries. Mahalo to the First Hawaiian Foundation who recently made financial contribution to Aloha Harvest.



Aloha Harvest Receives \$75,000 Grant from First Hawaiian Foundation

Aloha Harvest, a non-profit organization that rescues donated, perishable food from food donors and distributes the food to Oahu's needy, recently received a grant of \$75,000 from the First Hawaiian Foundation over two years. The grant monies, at \$37,500 per year beginning June 2014, will be used for general operating needs.

"We are very thankful to the First Hawaiian Foundation for its generous support of Aloha Harvest for the next two years," said Aloha Harvest Executive Director Ku'ulei Williams. "This grant will go towards supporting our ongoing operations."

MAHALO!
From the
North Shore Food Bank
donations of non-perishable
canned
goods are accepted at the
North Shore News Office
637-3138

BULLETIN BOARD

Featuring the largest selection of certified organic produce on the North Shore.
No panic...ours is organic.
Open 7 days.
Mon.-Sat. 9am-7pm.
Sun. 9am-5pm

66-445 Kam. Hwy
Haleiwa, Hawaii 96712
Next to the Post Office
808-637-6729 • 808-637-1922 fax

10% OFF
Your First 60 Min Full Massage
Includes Neck, Head, Shoulders, and Back

66-437 Kamehameha Hwy.
Suite 101A
Haleiwa, HI 96712
(Next to the Haleiwa Post Office)
(808) 366-1308

Call for an Appointment
Walk-ins Welcome
OPEN 7 DAYS A WEEK
MAE #2890

SUNSET AUTO SERVICE, INC.

- Auto air conditioning specialist
- Auto engine maintenance
- Safety inspection station

Walking distance to Wahiawa DMV

Call for appointment
622-5510
Matt Verdadero
207 N. Cane St., #1 Wahiawa

NSN Pet Issue • Would you like to see your pet(s) featured in the NSN? Email your pets picture with a caption to NShoreNews@aol.com Deadline July 24

Ipo shines aloha... Ipo is a 9 year old feral rescue cat.

"THE BULLETIN BOARD THAT IS IN EVERYONE'S HOME"

WAIALUA FARMERS' CO-OP MARKET

WAIALUA SUGAR MILL GROUNDS
SATURDAYS
8:30 A.M. – 1:00 P.M

BUY DIRECTLY FROM FARMERS

- KAHUKU FARMS
- WAIALUA FRESH
- FIELDS OF ALOHA
- TWIN BRIDGE FARMS
- DEL'S TROPICAL FLOWERS
- T & L FLOWERS AND PALMS
- WAIALUA COOPERATIVE FARMERS

FOOD VENDORS

- NORTH SHORE GOODIES
- NOK THAI COOKING HAWAII
- AND MORE

A MARKET MANAGED BY FARMERS
EDITH: 637-8589

North Shore News



2014 Schedule

PUBLICATION DATE	EDITION	DEADLINE DATE
August 6	#16	July 24
August 20	#17	August 7
September 3	#18	August 21
September 17	#19	September 4
October 1	#20	September 18
October 15	#21	October 2
October 29	#22	October 16
November 12	#23	October 30
November 26	#24	November 13
December 10	#25	November 27

Direct-Mailed to Every Home
MOKULEIA • WAIALUA • HALE'IWA • KAHUKU • LAIE
Every Other Wednesday
12,000 copies
"The North Shore's most popular publication" since 1970
(808) 637-3138 • NShoreNews@aol.com • NSN4Linda@aol.com
www.northshorenews.com



**North Shore News
2014 Special Editions**

Call for special rates & to reserve ad space
637-3138
NShoreNews@aol.com

Publication Date	Edition	DeadlineDate
August 6	Pets & NS Animals Send in your pets picture to be featured in the NSN	July 24
September 3	Labor Day–Campaigning Candidates	August 21



The North Shore News is published every other Wednesday and mailed free of charge to all North Shore homes and businesses. Extra copies may be obtained at our office.

PRESS RELEASE POLICY: Submit press releases in person or by fax, mail or email to Editor, North Shore News, 66-437 Kam. Hwy., Suite 210, Haleiwa, HI 96712. Please type your releases and keep them shorter than 200 words unless they are of an unusual news interest. Releases should be viable news stories and are published on a **space available basis only**, with priority given to those received in our office first. You may attach photos. We are not responsible for the return of any photos. All materials are submitted at owner's risk. We reserve the right to edit and/or refuse all submissions including advertising.

EDITORIAL POLICY: We welcome articles and letters from our readers. Letters to the Editor are published on a space available basis only and preference is given to shortness of length, and quality of content. We prefer to run not more than one letter, per person, per 6 month period. Letters subject to edit.

Views expressed by our contributing writers and advertisers do not necessarily reflect the view of the management and staff of the North Shore News. All rights reserved. Reproduction in whole or part without permission is prohibited. © 2014.

Editor & Classifieds

Linda Seyler

Typography

Downtown General Store

Contributing Writers

Tom Jacobs
Betty Depolito
Naty Hopewell
Choon James
Ryan Lorne

City Councilman Ernie Martin

State Representative Lauren Matsumoto
State Representative Richard Lee Fale

Photography

Banzai Productions
Ole Seyler



Please recycle this newspaper.

CLASSIFIEDS

SERVICES

SHORE ELECTRICAL SERVICE
New Const-Remodels
638-0049 / Lic#C20777

PARADISE PLUMBING INC.
New Const • Repairs • Remodels
808-368-1473 / Lic. 29856

Lawn Care For You
Mowing, Trimming, Light Hedging
Call Thomas 637-5839

Handyman Services
Remodeling, Carpentry, Floors,
Concrete, all parts of Construction
Call Bob "The nicest guy in the
business" Ph. 282-2812

North Shore Pumping
Septic and Cesspool Service
Clifford 638-0900 • 291-5099

Computer Problems?
I can fix any MAC or PC.
Chris 371-3089

Construction Services
Single wall, windows
New & remodels
Free Estimates
260-7386

CASH 4 CARS
Up to \$150 for unwanted cars.
852-1340

Carpentry & Painting Services
Repairs/Remodeling, Termite Rot
Doors, Cabinets, Countertops, etc.
Reasonable Rates 271-6584

Pet Sitting/Walking
July/August Availability
Pet Sit Stay Hawaii
Emilie owner
(808) 343-7146
www.petsitstayhawaii.com
mention this ad for \$10-off pet sitting



Like us on Facebook:
[Facebook.com/NSNewsHaleiwa](https://www.facebook.com/NSNewsHaleiwa)

Dillon Sign
& Residential Painting
Haleiwa - 20 yrs exp.
499-9582

PIANO LESSONS
Guitar, Ukulele, Bass,
Songwriting
637-4635

Paumalu Electric Inc.
C 18074

Residential & Commercial
New Installation & Repairs
Renovations. Remodels
Electric Meter Replacements
Complete Install for Solar PV
Dave Hancock 638-9054

Waynebow
Window Washing
Residential • Commercial
New Construction • Free
estimates
223-4034

HARVEY'S REPAIR, LLC
24 hrs Towing Service
Specializing in opening
locked car doors
Call any time 478-0333

N.S. Property Maintenance
Power wash, painting int/ext,
deck repairs, extensions,
fences, gates,
carpentry & remodels.
Maintenance, lawn & yard.
Chris 381-5213/638-0659



BIKRAM YOGA
****\$10 CLASSES****
3 p.m. Saturday &
Sunday
Please call for class schedule
637-5700

Your Clean Home
Vacation/Residential
Home Cleaning
Affordable • Reliable
• Green Cleaning
For Free Estimate
Call 638-0262 or 782-9941

BOBBY'S BODIES
Tuesday evenings at 5:00 p.m.
• Body Toning
Friday mornings at 9:00 a.m.
• Cardio Pump/Fat Burner
For more info: call Bobby, owner of
BOBBY'S BODIES at 637-4150

LEARN TO SWIM
AT THE
HAWAII SWIM
SCHOOL
ON THE NORTH SHORE
Developing swimmers since 1982
Haleiwa Rd. at Smiley Place
637-4863

LC Development
New homes, remodels.
kitchens, baths, decks,
custom metal fab.
BC 15645
342-8350 • 227-2323

Next Issue - Aug. 6, 2014
Deadline Date-July 24, 2014

Correction:
6/25/14 Liliuokalani
Protestant Church story -
The Emerson's ship name
called "Averick"
instead of "Avery".

HOW TO CONTACT THE NORTH SHORE NEWS

Letters to the Editor, and other items submitted for publication consideration may be sent to us via:

MAIL: 66-437 Kamehameha Hwy., Suite 210, Hale'iwa, HI 96712

E-MAIL: NShoreNews@aol.com

PHONE: (808) 637-3138

Office Hours: Closed Monday, Tues. & Thurs. 12 noon-4 p.m., Wed. & Fri. 10 a.m.-4 p.m.
www.northshorenews.com

CLASSIFIED ADS

For Advertising Rates
 Call 637-3138
 or go to
 www.northshorenews.com

ANGELS PLUMBING
 Repairs
 Remodeling
 Renovation
638-7878
 Lic. #C12004



GERMAN CAR SERVICE
 Professional-Qualified
 Technician
 Call Gary
 637-6800



Business Services Center
 Fast & convenient fax, copy,
 scan, computer/internet,
 laminate, etc.
 Across from Haleiwa post office.
 637-4558 or GoNorthShore.org

Aloha Computer
 PC Repair/Virus Removal
 Fax/Copy/Internet Access
 372-2667 or 237-4558

Haugan Construction LLC
 Projects Big & Small
 Call Steve 542-9269



Marianne Abrigo, Properties
 Specializing in -
 North Shore
 Real Estate
 Ask for our list of avail-
 able properties and/or a
 free market analysis.
Marianne M. Abrigo
 "Realtor since 1974"
 Office **637-3511**
 Fax **637-0777**
 Email **mabrigo222@aol.com**

HELP WANTED

BUSSERS/SERVERS
 Pizza Bob's in Haleiwa is looking for BUSSERS/SERVERS. Experience preferred. Apply in person at 66-145 Kam. Hwy.

COOKS/KITCHEN HELP
 Pizza Bob's in Haleiwa is looking for kitchen personnel. Experience preferred, but will consider training the right people. Apply in person at 66-145 Kam. Hwy.

Retail Sales Surf & Sea
 Hawaii's Ocean Sports Headquarters is always looking for hard working, energetic people to become a part of our sales team. Good pay, bonus, benefits. Ocean sports experience and/or bilingual a plus. Apply in person daily 9am-7pm
 62-595 Kam. Hwy., Haleiwa

Retail Sales Associate
Polynesian Treasures North Shore Marketplace
 Now hiring for PT/FT sales position. Previous retail and management or leadership experience a big plus!
 Competitive wages plus commission and bonus.
 Fax resume to 637-8535 or email to polynesiantreasures@hawaii.rr.com

MISCELLANEOUS

Ke Ala Pupukea Bike Path Revitalization Plan meeting, Tuesday, July 29
 6:00pm - 7:30pm
 Sunset Beach Rec Center

Haleiwa Art Walk
 Last Saturday of the Month
 6pm - 9pm
 Haleiwa Town

GOT BOOKS?
 Please donate your new or gently used books. Drop off donations at the North Shore News office above the Haleiwa Post Office
 637-3138

Clean Stream Hotline
 768-7890

North Shore News 2014 Special Editions
 See Page 21

Liliuokalani 38th Annual Benefit Luau on August 2, 2014
 1:00 pm - 4:00 pm
 Enjoy authentic Hawaiian foods

BON DANCE
Waialua Hongwanji Bon Dance
August 2 • 7 p.m.

North Shore Food Bank
 Food bag distribution
 Wednesdays at Haleiwa
 Gym across from Post Office
 9am-12pm

NSN Pet Issue
 Would you like to see your pet(s) featured in the NSN? Email your pets picture with a caption to: NShoreNews@aol.com

Operation: Backpack
 Please help our homeless and disadvantaged keiki with a new backpack and school supplies. See page 4 for more information.

Liliuokalani Church Easter Cantata Taped
 by Oleo on Channel 55 shown on the following dates:
 Monday, July 30 @ 8:30 pm
 Tuesday, August 1 @ 9:30 am
 Wed., August 2 @ 12:30 pm

Liliuokalani Protestant Church 38th Annual Benefit Luau
August 2, 2014
1:00 p.m - 4:00 p.m.
The menu: kalua pig, lomi-lomi salmon, chicken long rice, squid luau, rice, poi, raw crab, poke, opihi(if available), haupia, kulolo, pineapple, cake and juice.
 \$17.50 take out (11-2:00) \$20 sit in

Save the Sea Turtles Int'l and Adopt a Beach and Highway Hawaii
BEACH CLEAN UP
Last Saturday of every month
 10 a.m. • 61-529 Kamehameha Hwy., Haleiwa, HI 96712
 For more information 808-637-2211
 Check out our website at: <http://adoptabeachhawaii.com>

New Hope Haleiwa
 "Anchored to God's word, led by his spirit" @Haleiwa Elementary School
 9:00am Service
 621-9363

Voice of God Ministries
 Jesus Loves You
 If you need Prayer
 Call 808-373-0294

Queen's Open Market
 Sundays 1:00 to 5:00 pm
 Liliuokalani Church

Classified Ad Rates
 3 lines (min.) \$18.89
 4 lines \$25.13
 5 lines \$32.45
 1" Box Ad \$41.88
 (27 characters in each line)
 Include your contact information.
 *Ads can be dropped off in mail slot, mailed, or emailed. Pay by check payable to: North Shore News or credit card by phone order.
 We reserve the right to refuse any advertisement with a full refund.
 North Shore News • 66-437 Kam. Hwy., Suite 210, Haleiwa, HI 96712
 • (808) 637-3138 • NShoreNews@aol.com

FREE ADS
Garage & Yard Sales, Reunions, Lost & Found.
 Email ad to:
 NShoreNews@aol.com

OFF da ISLAND
 Are you leaving Oahu on vacation or business? Do you live on a neighbor island, the mainland or foreign country and subscribe to the North Shore News? Try send us a photo of someone in front of a sign or landmark holding a copy of the NSN. Email your photo along with the person or persons' name, community of residence, telephone number and photo location to: NShoreNews@aol.com.



Malama Market Haleiwa:
Open Daily 7 a.m.–9 p.m.
(808) 637-4520

Malama Market Makakilo:
Open Daily 6 a.m.–10 p.m.
(808) 672-9955

Valid Dates:
7/23/14–7/29/14

Deals of the Week!

Bing Cherries



\$3⁹⁹
LB.

choice *Certified Angus Beef*[®]
**Boneless
Chuck Roast**
Jumbo Pack, 5 lbs. or More

U.S.D.A.
Choice

LARGE
SIZE



\$4⁴⁹
LB.

**Kellogg's
Kids' Cereal**
Selected Varieties,
8.56–15.5 oz.



\$3⁷⁹

Lipton Tea
Selected Varieties,
12/16.9 oz.
**or Starbucks
Frappuccino**
Selected Varieties,
4/9.5 oz.



\$4⁹⁹
EA.
When You Buy
2 or More!

**Del Monte
Ketchup**
24 oz.



\$1²⁹

**Tostitos
Tortilla Chips**
Selected Varieties,
9–13 oz.



\$3⁵⁹

**Minute Maid
Orange Juice**
Selected Varieties,
59 oz.



\$3⁹⁹

**Hunt's
Canned Tomatoes**
Selected Varieties,
14.5 oz.



3/\$4

**Fresh Baked
Large Croissants**
4 ct.



\$4⁷⁹
EA.

**15 Piece
Fried Chicken
Thighs**
Original, Korean,
or Furikake

15 PCS



\$17⁴⁹
EA.

**Heineken, Corona,
Stella Artois,
or Redd's Apple Ale**
12 Pk. Bottles or Cans



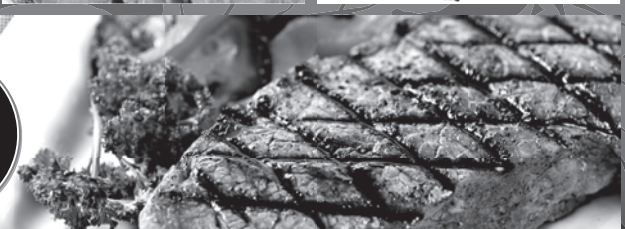
\$14⁹⁹

Thursday

Grilled Steak Lunch

7–8 oz. Steak, Rice, Tossed Salad, Drink

\$8⁹⁹



Hawaii Beverage Fee Hawaii Beverage Fee of 1.5¢ per can or bottle will be added to purchase price at checkout. An additional Hawaii Deposit Fee of 5¢ will be charged for all specially marked beverage containers.

Limit five units (mix/match) per purchase, unless otherwise specified. We reserve the right to limit quantities. No sales to dealers. Prices plus applicable state tax. Hawaii EBT cards welcomed.