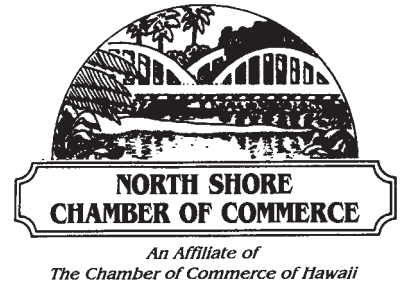




### What's Historic about Hale'iwa?

Find out on page 6.



## Beauty and the Beast at Hanapa'a

Pictured here is an odd couple attending the 2011 the opening day of the annual Hanapa'a Jackpot Fishing Tournament at Hale'iwa Small Boat Harbor on Friday, June 24. On the left is the very popular UH mascot "Vili" the Hawaiian Warrior. On the right is the very lovely 2011 Hanapa'a Queen Glennel Warren. Both beauty and the beast made for an entertaining element for all the spectators that showed up to ooh & ahh the daily weigh-in of tournament fish hauled in by Hanapa'a crews for a total of 14,917.5 lbs!

Tournament results are posted on page 13. (Ron Valenciana photo)


PRE-SORTED STANDARD U.S. POSTAGE PAID Honolulu, Hawaii Permit No. 1479	66-437 Kamehameha Hwy., Suite 210 Hale'iwa, HI 96712
--	---

PROUDLY PUBLISHED IN  
**Hale'iwa, Hawai'i**  
*The Surfing  
 Capital of the World!*



## OFF da Island at Turks & Caicos Islands

Near the Bahamas and Jamaica are a small chain of islands called the Turks & Caicos Islands. They are becoming much of a resort area lately. In 1960 there were no wheeled vehicles, but times have changed. Bill & Rita Quinlan from Sunset Beach visited there recently. Whether they were on land or sea the Quinlan's always kept a recent copy of the NSN handy to remind them of the good times back on Oahu's beautiful North Shore. To learn more about our OFF da Island photo campaign turn to page 23.



### Subscribe to the North Shore News

The North Shore News is delivered free to residents in Mokuleia, Waialua, Haleiwa, Kawailoa, Waimea, Pupukea, Sunset, Kawela, Kahuku, and Laie. A subscription is available for other cities on Oahu, Outer Islands, or Mainland U.S. or Alaska for just \$27.00 per year for 25 issues for delivery by standard bulk mail (2-3 weeks Mainland) or \$48 delivered by 1st class postage (3-5 days). You may subscribe by using check, money order or credit card (VISA, MC, AMX).

Mail North Shore News to:

Recipient \_\_\_\_\_

Address \_\_\_\_\_

City \_\_\_\_\_

Credit Card # \_\_\_\_\_

Expiration \_\_\_\_\_

Return this form with payment to:  
North Shore News  
66-437 Kam. Hwy. #210  
Haleiwa, HI 96712

CLIP



### Cholo's Homestyle Mexican Restaurant & Margarita Bar



### Island Fresh Fish Tacos

**Dine-In**    Burritos • Quesadillas • Nachos  
**Take-Out**    Enchiladas • Fajitas

## 637-3059

**OPEN EVERY DAY**  
10:30 a.m.-9:30 p.m.



**"Hawaii's Best Little Mexican Restaurant"**

All Major Credit Cards Accepted

Located in the North Shore Marketplace  
66250 Kamehameha Highway Haleiwa, Hawaii 96712

Executive Chef Hector Morales and the Turtle Bay Resort Culinary Team are pleased to announce the 2<sup>nd</sup> Annual FOOD & WINE SUMMER SERIES!



# CALENDAR



**HECTOR MORALES**  
Turtle Bay Resort  
true hawaii



**JOHN ARMSTRONG**  
Twenty One

## Guest Chef Hardy Kintscher

On FRIDAY, JULY 22<sup>nd</sup> dinner will be crafted by Guest Chef Hardy Kintscher of Michel's at the Colony Surf. \$75 Without Wine Selections | \$95 With Wine Selections



**HARDY KINTSCHER**  
MICHEL'S

## Guest Chef Russel Siu

On FRIDAY, AUGUST 19<sup>th</sup> dinner will be prepared by Guest Chef Russell Siu of 3660 on the Rise. \$75 Without Wine Selections | \$95 With Wine Selections



**MARC ANTHONY FREIBERG**  
Neiman Marcus

## Guest Chef Marc Anthony

On WEDNESDAY, SEPTEMBER 28<sup>th</sup> Guest Chef Marc Anthony Freiberg of Mariposa at Neiman Marcus will be crafting this evenings special dinner. \$75 Without Wine Selections | \$95 With Wine Selections



**RUSSELL SIU**  
3660 ON THE RISE



RESERVATIONS REQUIRED | Call 293-6053

Doors open at 6pm with no-host cocktails available and dinner will begin promptly at 6:30pm

## Editor's Choice

"A Pin Drop"  
(Author Unknown)

Here's a refresher on how some of our former patriots handled negative comments about our country.

JFK's Secretary of State, Dean Rusk, was in France in the early 60's when DeGaulle decided to pull out of NATO. DeGaulle said he wanted all US military out of France as soon as possible. Rusk responded: "Does that include those who are buried here?" DeGaulle did not respond.

### You could have heard a pin drop.

When in England at a fairly large conference, Colin Powell was asked by the Archbishop of Canterbury if our plans for Iraq were just an example of 'empire building' by George Bush. He answered by saying: "Over the years, the United States has sent many of its fine young men and women into great peril to fight for freedom beyond our borders. The only amount of land we have ever asked for in return is enough to bury those that did not return."

### You could have heard a pin drop.

There was a conference in France where a number of international engineers were taking part, in-

cluding French and American. During a break, one of the French engineers came back into the room saying, "Have you heard the latest dumb stunt Bush has done? He has sent an aircraft carrier to Indonesia to help the tsunami victims. What does he intend to do, bomb them?" A Boeing engineer stood up and replied quietly: "Our carriers have three hospitals on board that can treat several hundred people. They are nuclear powered and can supply emergency electrical power to shore facilities. They have three cafeterias with the capacity to feed 3,000 people three meals a day. They can produce several thousand gallons of fresh water from sea water each day, and they carry half a dozen helicopters for use in transporting victims and injured to and from their flight deck. We have eleven such ships. How many does France have?"

### You could have heard a pin drop.

A U.S. Navy Admiral was attending a naval conference that included Admirals from the U.S., English, Canadian, Australian and French Navies. At a cocktail reception, he found himself standing with a large group of officers that included personnel from most of those countries. Everyone was chatting away in English as they sipped their drinks but a French admiral suddenly complained that, whereas Europeans learn many languages, Americans learn only English. He then asked, "Why is it that we always have to speak English in these conferences rather than speaking French?" Without hesitating, the American Admiral replied, "Maybe it's because the Brits, Canadians, Aussies and Americans arranged it so you wouldn't have to speak German."

### You could have heard a pin drop.

AND THIS STORY FITS RIGHT IN WITH THE ABOVE. Robert Whiting, an elderly gentleman of 83, arrived in Paris by plane. At French Customs, he took a few minutes to locate his passport in his carry on. "You have been to France before, monsieur?" the customs officer asked sarcastically. Mr. Whiting admitted that he had been to France previously. "Then you should know enough to have your passport ready." The American said, "The last time I was here, I didn't have to show it." "Impossible! Americans always have to show their passports on arrival in France!" The American senior gave the Frenchman a long hard look. Then he quietly explained, "Well, when I came ashore at Omaha Beach on D-Day in 1944 to help liberate this country, I couldn't find a single Frenchman to show a passport to."

### You could have heard a pin drop.

## The Hale'iwa Family Dental Center, Ltd.



presents

"Comfort Dentistry"  
including—

- Relaxation Glasses
- Television Glasses
- Caring Staff
- Special Medication to help you relax
- Laser Cavity Detection
- New Patients Welcome!

Your teeth are much too important to neglect.

Call: 637-9652  
for your reservation

We're conveniently located behind First Hawaiian Bank  
in the heart of Hale'iwa.



# Laniakea Views

NORTHSHORE, OAHU | RANCH / FARM PROPERTY

5 ACRE FEE SIMPLE LOT FOR SALE

**Price Reduced to \$990,000**

- **NORTH SHORE NEAR THE BEACH**
- Great land for keeping horses, diversified crops or space to raise a family
- Electric, water and private secure paved road access
- Fee Simple, AG-1 Zone
- Out of Tsunami zone
- MLS # 1101161
- **Seller Financing Available**

Shown by appointment only

**Julia Napua Fetzer (RA)**

808.286-7550

[jnfetzer@yahoo.com](mailto:jnfetzer@yahoo.com)



1920 Ala Moana Blvd, Suite 102,  
Honolulu Hawaii 96815

## Saccoccio & Lopez

ATTORNEYS AT LAW  
Serving Haleiwa since 1984

Bankruptcy  
Personal Injury • Criminal Law  
Landlord/Tenant  
Traffic Offenses • DUI

Family Law  
Adoption • Custody • Divorce  
Paternity • Guardianship  
Deeds, and Wills

**637-7611**

VISA/MC Accepted  
Above the Haleiwa Post Office



Paul & Nita

## Quality Tile Crafts

"No job too big or small!"

Specializing in Ceramic Tile,  
Travertine, Marble, & Slate

Kevin Wilson

cell (808) 864-4985 office (808) 638-8492

[www.QualityTileCrafts.com](http://www.QualityTileCrafts.com) Free Est.

# PAALAA KAI BAKERY



**OPEN DAILY 5:30am~8:00pm**

**Stop by to see whats new @ PKB**  
\*coffee corner, deli, smoothies and more!\*

**Now follow us on TWITTER**

**@pkbsweets**

for our latest specials and deals!



## Olakino Maika'i

(Good Health)

by Naty Camit Hopewell

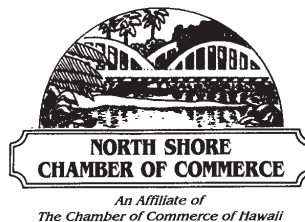
### Leptospirosis

Leptospirosis is a severe bacterial infection that is rare in the U.S., except Hawaii, which is the only state that requires reporting of this disease. Some 345 cases between 1999 and 2008 were reported to the Hawaii Department of Health. The number of confirmed cases ranged from 11 to 27 per year.

Leptospirosis is caused by exposure to *Leptospira* bacteria, which can be found in fresh water contaminated by animal urine. It occurs in warmer climates. People become infected through open wounds or mucous membranes. A recent case seen at our health center involved a person who contracted the disease while paddling up one of the rivers on Oahu. Instead of stand-up paddling, the person paddled while sitting on the board.

Symptoms can take 1-21 days to develop and may include fever, chills, muscle pain, nausea, vomiting diarrhea, and dry cough. The recent case also developed dark urine due to the bacteria affecting the liver. Severely ill patients may require hospitalization. There was a leptospirosis case in 2004 in which a college student on the East Coast returned to Hawaii during Xmas break. On his return to the mainland, he developed flu-like systems and died.

The exposures in Hawaii are mostly recreational. Most are related to freshwater swimming, hiking, and camping. Occupational exposures include taro farming and, more recently, shrimp farming. The treatment is antibiotics, such as Doxycycline and penicillin. The sooner the treatment, the better the outcome. People can also take antibiotics to prevent the disease after exposure.



## What's Historic About Hale'iwa?

by Antya Miller, Executive Director

Have you ever wondered what's historic about Hale'iwa? The signs on the bypass direct motorists to turn into Historic Hale'iwa. Aside from what some people think are a few old buildings, what's historic about it?

In 1983 the iconic Hale'iwa Theater was torn down. It was an architect-designed, art deco theater built of lava rock that seated 900 people. The destruction of the theater galvanized the community to establish the Hale'iwa Historic, Cultural and Scenic District, now simply called the Hale'iwa Special District. Over 30 buildings are now protected under the City and County's Land Use Ordinance. The main district objectives are: to preserve and restore the historic buildings from the early 1900's; to ensure that new development is compatible with and complements those buildings and sites through appropriate period design and materials; and to enhance the rural, low-rise character of the town while preserving the significant views, open space, mature trees and sites.



Hale'iwa Main Street and the North Shore Chamber of Commerce, actively work to preserve the area's history and to address the lack of interpretation of the history in several ways. It has been instrumental in the restoration of the Waialua Courthouse, Anahulu Bridge, the Waialua Community Association, and the Mutual Telephone Company Building, now the home of the Chamber and Visitor and Resource Center. It also publishes a history on the website, leads the Hale'iwa Arts Festival historical tours, and publishes several brochures about the history of the area. Recently published is the revised "Walking Tour of Hale'iwa." Walking tours are on Wednesdays at 3:00 p.m., Saturdays at 9:30 a.m., and by appointment. Tours are 90 minutes and cost \$10, which includes the brochure featuring 27 historic buildings and sites. Reservations need to be made 48 hours in advance by calling the Chamber at 637-4558. For more information, go to [www.gonorthshore.org/history](http://www.gonorthshore.org/history).



**WYLAND GALLERY - HALEIWA**

North Shore Marketplace  
66-250H Kamehameha Highway  
Haleiwa, HI 96712  
(808) 637-8729

As Haleiwa celebrates North Shore artists at the Haleiwa Art Festival. Wyland Galleries proudly presents North Shore artists Heather Brown, Steven Power, Nicole Vermillion, and Hilton Alves to portray the North Shore's most recognized landmark. The Haleiwa Rainbow Bridge. The historic landmark will also be painted by Southern California artist Wade Koniakowsky, Canadian artist Christie Shinn, and a Russian born artist Anastasia. Through the month of July, come to Wyland Galleries and experience our guest artist's rendition of the bridge.

**wanna learn?**  
**NORTH SHORE**  
**JIU-JITSU CLUB**  
**try it out free!**  
**men-women-kids**  
**NorthShoreBJJ@GMail.com**

**BREAKFAST**  
**7 AM to 11 AM DAILY**



Haleiwa Shopping Plaza - 637-5095

**PLUS \$2.00 Off with this Coupon**  
Some Restrictions Apply. See Restaurant for Details.  
 When Ordering Regular Priced Items. Good Anytime. One Coupon Per Person.  
 Can Not Be Combined with Other Discounts. Expires 08/31/2011.



**HURRY! ONLY UNTIL JULY 20TH!**

**JULY**

**SUPER SPECIAL**

Have you taken a look at our loaded deli section lately?

- \* artisan bread sandwiches
- \* jello, tapioca & chocolate pudding
- \* mango & lilikoi butter
- \* blueberry cream tarts

**CHECK OUT THE ABOVE DELI ITEMS AND BE REWARDED**

**BUY ANY ITEM IN THE DELI SECTION AT THE REGULAR PRICE AND RECEIVE A SECOND ONE FOR 50% OFF**

OFFER GOOD ONLY ON THE FIRST ITEM SELECTED AND ONCE PER DAY. EXPIRES JULY 20, 2011.

# OPERATION: BACKPACK

## FINAL URGENT APPEAL!

### PROJECT 2011



**Dear Readers:**

We first begun Operation: Backpack in 2004 with the goal of 40 brand new back to school backpacks loaded with school supplies to be given to homeless & disadvantaged students for the new school year. At first approach, we believed that 40 backpacks was a tough challenge. Now, 7 years later we already have a list of over 300 needy students registered, all hoping to start the new school year like most other keiki their own age with a brand new back to school backpack.



At press time, we are closing in on the half way point for funds needed to meet the growing demand. Please help us reach our goal so that every keiki can begin the new school year with a confident smile. Please give as generously as you can. The deadline is next Friday July 21, 2011. For more information please see the following page. Mahalo!



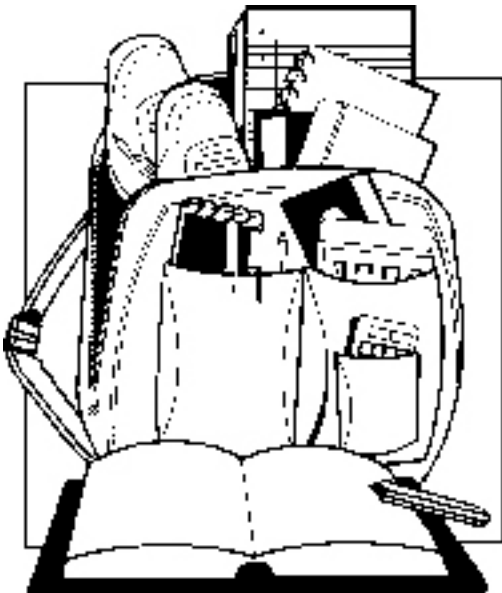
**- Ron Valenciana  
Coordinator,  
Operation: Backpack  
342-3969**

TRISH CODER PHOTOS





# OPERATION: BACKPACK '11



We have a growing list of 300+ homeless & disadvantaged students that need your help to get a new back to school BACKPACK, loaded with needed school supplies.

## HERE'S HOW YOU CAN HELP!

Call the North Shore News office at 637-3138, and tell us how many keiki your family, your business, your church or your organization wants to sponsor. Last year we gave out 300+ backpacks to needy keiki.

## DEADLINE TO SPONSOR IS

(Please help!) **JULY 22**

'11 Goal: 350 Backpacks!

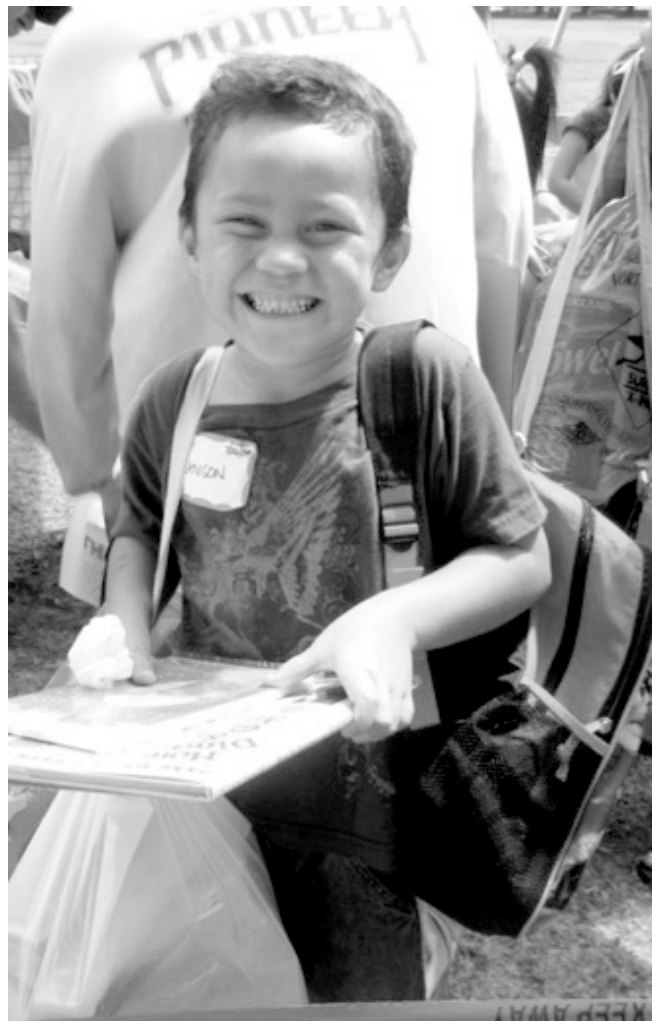
## TWENTY-FIVE DOLLARS WILL DO IT!

\$25 dollars will sponsor a NEW backpack LOADED with these school supplies

*Composition books, elmer's glue, #2 pencils, erasers, sharpies, highlighters, colored pencils, crayola markers, scissors, ruler, school cases, crayons, watercolors, 3 ring binders, 3 subject folders, scotch tape, index cards, pens, glue sticks, plus other age/grade specific items.*

**Call 637-3138**

to sponsor a  
North Shore keiki  
or send your donation  
to the address below.



Make check payable to: O.A.M.C. or Once-A-Month Church, P.O. Box 1117, Haleiwa, HI 96712



**Councilman**  
**Ernie Martin**  
**Serving You in District 2**

**An explanation of the Council's override of the Mayor's veto of transit bills**

One of the great misconceptions surrounding the dispute between the Mayor and the City Council over the Honolulu Authority for Rapid Transportation (HART) is his idea that the Council wants to micro-manage the transit project. Nothing could be farther from the truth. The 2010 charter amendment clearly empowered the authority to build, operate and maintain a fixed guide way system for Oahu. On this, the Council and the Mayor agree. But what the Mayor refuses to acknowledge is that Section 17-106 of the City Charter just as clearly requires the authority to submit a line-item appropriation request for both its operating and capital budgets to the Council. Although the request must come through the Office of the Mayor by December 1st for the following fiscal year, the Charter explicitly prohibits the Mayor from altering this budget. Instead, it directs the Council to approve the appropriation request, with or without amendments. Ironically, the 2012 appropriations for HART passed by the Council and vetoed by the Mayor were, in es-

sence, what the administration had originally requested. Clearly, this argument is not about the money. It's about the Mayor insistence that the Council has no legitimate responsibility for rail. It is absolutely absurd to think that the Council would have amended the Charter to completely eliminate their fiduciary oversight of the largest public works project in our history. HART will require an annual operating subsidy upwards of \$100 million dollars. In the likely event of cost-overruns, HART will have to seek even more money in additional subsidies for construction. With the Mayor unable to modify HART's budget requests, the Council is the only entity directly responsible to the taxpayers. Unlike the Mayor, the Council has not had the time or money to conduct public opinion polls, but we know enough about the interests of Oahu taxpayers to know that they are already nervous about the affordability of the rail project. If HART had the level of financial autonomy the administration is insisting on, the public would have no security against the possibility of unchecked spending. It was for this very reason that the Council, in passing the Charter amendment, ensured that HART would be subjected to responsible financial oversight. It is for this reason that the Council unanimously voted to override the Mayor's veto. As HART takes control of the project in July, there is every indication that we will move forward as a team to see this project to completion. The Council is now very optimistic about working collaboratively with HART to provide the authority with the necessary resources to get the job done, on time and within budget.

**NORTH SHORE DENTISTRY**

Welcomes  
 Dr. Alan Yugawa  
 to our Practice.



**FREE WHITENING SPECIAL\***

- New Patients of Dr Yugawa only
- With Paid Exam, X-rays, & Cleaning
- Thursday Appointments only

\*Restrictions Apply, Call for details  
 Offer Ends 7/15/11

**638-7883** 59-712 A Kamehameha Hwy  
 Next to the Pupukea Foodland



**Polynesian Treasures**

*Hawaii's largest selection of  
 Polynesian handicrafts and Hawaiian inspired gifts.*

North Shore Marketplace • Haleiwa, Hawaii  
 Open daily from 10 a.m. • 808-637-1288

**KUA AINA**



*The Best!*

IN HALEIWA

**637-6067**

NOW IN HONOLULU

**591-9133**

AT WARD VILLAGE SHOPS

HALEIWA • TOKYO • HONOLULU

# Hale'iwa Arts Festival Fourteenth Annual Summer Event

## July 16 & 17, 2011, Hale'iwa Beach Park

The Hale'iwa Arts Festival Fourteenth Annual Summer ArtFest features Juried Visual Artists, plus Musicians, Singers, Dancers, Cultural/Historical Tours, Student Art, Art Demonstrations and Children's Art Activities – Saturday, July 16, 10 a.m.-6 p.m., and Sunday, July 17, 10 a.m.-5 p.m., 2011, at Hale'iwa Beach Park on the beautiful North Shore of Oahu. Free Admission.

Event attractions include 126 juried visual artists with original works, limited and open editions, both traditional and contemporary, in painting, ceramic, photography, sculpture, fabric, jewelry, glass, and other mediums. Art will be available for viewing and purchase directly from the artists.

This annual celebration of the arts also includes performance arts, with many performers presenting original music and dance. Cultural/historical tours presented by the North Shore Chamber of Commerce Historic Preservation Committee, art demonstrations and Keiki arts activities are also offered as activities to enhance and educate during this family oriented weekend.

The "Cool Stuff to Buy" booth will include our new limited edition posters and shirts, and offer sets of note cards based on our first ten years of poster images. And there may also be a small quantity of

limited edition posters and shirts from past year's events.

A broad selection of food and beverages will be available at the ArtFest site and also throughout Hale'iwa Town. You can't stay hungry this weekend!

Hale'iwa Arts Festival programs for 2011 are supported in part by: the Hawaii Tourism Authority, the City & County of Honolulu, Kamehameha Schools, First Wind, Longs Drugs, Pioneer Hi-Bred Int'l, Inc., Hawaii Media Inc., Luibueno's Mexican and Seafood, Pizza Bob's, Aoki's Shave Ice, Hale'iwa Joe's Seafood Grill, Jameson's By The Sea, Turtle Bay Resort Golf Club, Team Real Estate, North Shore Equipment Rentals, Menehune Water, the Hawaii State Foundation on Culture and the Arts, and by our faithful individual contributors, members, and volunteers.

"Celebrate the Arts! Rediscover the Artist Within!" Spend a special day with your family and friends at the Fourteenth Annual Hale'iwa Arts Festival Summer ArtFest. It's fun, and it's free!

### PERFORMANCE SCHEDULE

SATURDAY JULY 16

Master of Ceremonies - Johnette Wicker

- 10:00 a.m. Celtic Pipes and Drums  
with Jig This Dance School
- 11:00 a.m. Na Leo Nahenahe 'O Na Kupuna  
Kumu Hula Rosemarie Dungca
- 12:00 p.m. Kalei Gamiao  
Ukulele Artist
- 1:00 p.m. The Bluegrass Barnstormers  
Bluegrass, Country, Old Time Fiddle
- 2:00 p.m. The Tritones  
Rockabilly
- 3:00 p.m. North Shore School of Music  
Summer School of Rock
- 4:00 p.m. Abrigo Ohana  
The Future of Hawaiian Music
- 5:00 p.m. Jungle Rocket  
Pupukea Blues and Jungle Boogie

SUNDAY JULY 17

Master of Ceremonies – Corrine Germain

- 10:00 a.m. Ka Eha  
Contemporary Hawaiian 4-part Harmony
- 11:00 a.m. Castle High Performing Arts Center  
Musical Theatre Performance
- 1:00 p.m. Doolin Rakes  
Celtic Rock and Roll
- 2:00 p.m. Hawai'i Opera Theatre Ensemble  
A Taste of Opera & Theatre
- 3:00 p.m. Hot Club of Hulaville  
Traditions of gypsy djams & Hawaiian kanikapila
- 4:00 p.m. Surprise set to close the festival

Performing Arts Coordinator: Kerry Germain/Gidget  
Stage Manager: Mary James Lewis

## Hale'iwa Arts Festival

July 16-17, 2011 Hale'iwa Beach Park



"On Duty" Christie Shinn

**CELEBRATE THE ARTS!  
IT'S FUN and IT'S FREE!**

**126 VISUAL ARTISTS - PERFORMANCE ARTS  
CULTURAL TOURS - KEIKI ACTIVITIES**

Supported in part by: Hawaii Tourism Authority, the City and  
County of Honolulu, Longs Drugs, Kamehameha Schools,  
Pioneer Hi-Bred, Int'l, Inc., First Wind,  
and the Hawaii State Foundation on Culture and the Arts



## First fish out of the water

The first boat to weigh in on the first day of the 2011 Hanapa'a Jackpot Fishing Tournament ended up being the largest tournament fish and you can see why in the photo above. Capt Christian Lewis of Sunset Beach and the crew of The SEEKER pulled in this 537 pound Marlin. Pictured here from left to right are: Kelii Mercurio, John Sells, Kalae Branco, boat owner Monica Parker, Capt. Christian Lewis, and Hanapa'a Queen Glennel Warren. (Photo by Ron Valenciana)



## 2011 Hanapa'a Jackpot Fishing Tournament RESULTS

### DAY 1

June 24

MARLIN	Team 1 Seeker	538 lbs
AHI	Team 23 Boss C	213 lbs
MAHI	Team 32 Kelsea Ann	43 lbs
ONO	Team 26 Grand Slam	42.5 lbs

### DAY 2

June 25

MARLIN	Team 27 Hook It Up	143 lbs
AHI	Team 30 V. Mono Hull	224 lbs
MAHI	Team 26 Grand Slam	24 lbs
ONO	Team 2 Kapeka	46.5 lbs

### LARGEST FISH OF TOURNAMENT

MARLIN	Team 1 Seeker	538 lbs
AHI	Team 30 V. Mono Hull	224 lbs
MAHI	Team 32 Kelsea Ann	43 lbs
ONO	Team 2 Kapeka	46.5 lbs

### CLEAN SWEEP

Team 11 Sasha Ann

### TOTAL WEIGHT

1st Place	Team 32 Kelsea Ann	1,452 lbs
2nd Place	Team 23 Boss C	912.5 lbs
3rd Place	Team 29 Lady Ida	845.5 lbs
4th Place	Team 11 Sasha Ann	814 lbs
5th Place	Team 22 Candice M	795.5 lbs
6th Place	Team 4 Makaanani	742 lbs

### TOTAL TOURNAMENT WEIGHT

14,917.5 lbs



## Direct From Donovan State Senator Donovan Dela Cruz

I am pleased to report that the Governor has informed me that funds are being released for the following project: Waialua High and Intermediate School Science, Technology, Engineering and Mathematics (STEM) Learning Center improvements: \$750,000 for renovations and equipment. Two auto shops, home economics room and chorus room will be renovated. In addition, work will include upgrading the electrical capacity, replacing cabinetry and installing solar fans. Equipment purchase will include a water jet cutting system for the robotics program and new furniture.

I have also been informed by the Hawaii Public Housing Authority that the agency has started work on the following:

La'ioia: \$252,030 for upgrading the fire alarm system and tree trimming.

Kupuna Home O'Waialua: \$1,433,971 for design and construction of sewage treatment plant improvements and transformer replacement and maintenance.

Wahiawa Terrace on Wilikina Drive: \$140,391 for design and construction of re-roofing, sewage lift station, gas heat pump and water heater upgrades.

Although the state faces a budget deficit of over \$1 billion, certain needs still have to be met and deficiencies

addressed. There are many urgent needs competing for the limited amount of funding available. Therefore, I am pleased that we were able to have the foregoing funds released and am hopeful that other projects we submitted for funding will be undertaken in the near future.

Although by publication date of this issue the Governor will have made his decision as to whether he intends to veto SB 1559 which establishes preferential rates for purchase of energy that is used or consumed for agricultural activities on lands designated as important agricultural lands, I am hopeful that he reconsidered his intent to veto. If he did veto the bill, we will have to work at addressing any concerns that caused his veto before we resurrect the bill next session. I did not agree with his reasons but perhaps we need to clarify the stipulations.

If the Governor decided against vetoing the measure, I am pleased that he reconsidered his decision. This was an added incentive to incentives already established for important agricultural lands to help reduce operating costs of farming in the state. Agriculture is an important part of our state's approach to sustainability. We rely too much on out-of-state produced and grown products.

Since my district has most of the prime agriculture lands on the island and because I believe that agriculture can be one of our answers to rural economic development, I am currently working on a project that, if successful in my district, can be applied to other areas of the state that agriculture can flourish. I have always been an advocate for agriculture both legislatively and vocally, but for agriculture to be a prominent economic stimulus, we need to lower the cost of operations for the farmer. This is why I will continue to introduce measures such as SB 1559.

## DRAFTPLANS HAWAII

- Over 10,000 floor plans & blueprints available for purchase online. Gather ideas for your own design.
- Drafting Service available for new home designs, additions, renovations, decks, fence, rock walls, etc.
- Free property specifications & title search info.

[www.draftplans.com](http://www.draftplans.com)

Call for free estimates:  
**265-0035**



## North Shore Food Bank

You can help feed the North Shore's homeless & hungry by donating non-perishable canned foods to the North Shore Food Bank located in the North Shore News office above the Hale'iwa Post Office.

**637-3138**

Prefer to contribute financially?

Check can be made out to:

Once A Month Church  
P.O. Box 117, Hale'iwa, HI 96712

### TOP 5 MOST NEEDED ITEMS

- Financial Contributions
- Canned meats or tuna
- Canned meats & soups
- Canned vegetables & fruits
- Canned beans

*No donation is too small.*

*501c3 non-profit*

## Oceanside Chapel Service at Turtle Bay Resort



Every Sunday at 9 a.m. in the beautiful oceanside wedding pavilion.

Hosted by Pastor Ron Valenciana

- Non-denominational 45 min. service
- Traditional & Contemporary music
  - 15 minute sermon
- Free gift to all first-time visitors
- All are welcome! Free validated parking

For more information call Pastor Ron at 342-3969.

\*When church is pau,  
enjoy dining at the Palm Terrace,  
Hang Ten Pool Bar, or Lei Leis.

  
Turtle Bay Resort

# Hawaii BRIDAL EXPO

*July 29-31, 2011*

Blaisdell Exhibition Hall

**Show Hours:**

Friday: 5:30 pm to 10 pm  
Saturday: 10:30 am to 5 pm  
Sunday: 10:30 am to 4 pm

**Tickets: \$9.00**

*\$75,000 in prizes given away at the show!*

**Sponsored by:**

Celebrity Tuxedos • Princess Brides • Liquid Light Images  
Spinning W.E.B. Florist • Wedding Planner 808 • IMF Visions  
Vacations Hawaii • Big City Diner • JW Marriott Ihilani Resort & Spa  
Watanabe Florals • Pacific Diamond & Swiss Watch Exchange

**BUCKLES PRODUCTIONS™**

**For more information go to [BridesClub.com](http://BridesClub.com)**

## Cadets Go the Distance in Leadership Training

Story and Photos by LTC (Ret) Timothy Schiller, SAI, Kahuku High School

On 20-25 June, 71 cadets, five from Kahuku High School participated in the JROTC Advanced Leadership Training Challenge (ALTC 2011) at the Youth Challenge Academy at Ka'lae'loa, formerly known as Barbers Point. Upon arrival, Cadets are immersed in the ways of the Army. They begin Physical Training (PT) and Drill and Ceremony (D&C) which instills self-discipline and prepares them for the rigors and challenges of the upcoming week.

While most High School students during the summer break are waking up at 10 a.m. or later, not the case with these cadets. At 0430 a.m. with little time, they formed up in a Battalion formation, salute the flag for reveille, and then go off to a grueling fitness session ran by MAJ (Ret) Cory Marlowe, Senior Army Instructor (SAI) at McKinley High School. Following breakfast, room inspections, and personnel hygiene, the next 12-15 hours consisted of various training activities focusing on developing these Cadets into becoming leaders with team development. Cadets at ALTC were transformed through this rigorous training, and developed their poten-

tial in the most important ways-mentally, physically and emotionally. The course fully prepares Cadets to run their Battalion's at their High Schools, with positions of responsibilities from Squad Leader to Battalion Commander.

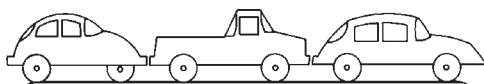
Once the School Year (SY) begins, these ALTC Cadets will assume their roles as leaders on Day One. The lessons they have learned at ALTC will tremendously benefit the newest cadets arriving at school, the 9th Graders, or LET 1's (Leadership Education and Training), as they will develop these LET 1 Cadets to be future leaders of tomorrow.

The benefits of ALTC will extend well beyond their High School years into any career they choose. Additionally, some graduating JROTC Seniors or (LET 4's) this year, may qualify for a one-four-year scholarship that may take care of college tuition and many other college expenses by participating in the Senior Army ROTC Program at the University of Hawaii, or other colleges that offer ROTC.

More photos and video can be found on the WEB [WWW.ALTC2011.WEBLY.COM](http://WWW.ALTC2011.WEBLY.COM)



### CAR WASH !



Starting at \$5

Saturday, August 13, 2011

8am to 2pm

Waiialua Community Assoc. in Hale'iwa

Proceeds to benefit the North Shore Food Bank

Sponsored by the Once A Month Church

(to volunteer or donate call 342-3969)

OK to bring food donation too

**We Pay You  
\$100**

**CASH & FREE  
TOWING**

**for unwanted vehicles  
(complete)**

**636-7183**

**North Side Towing**

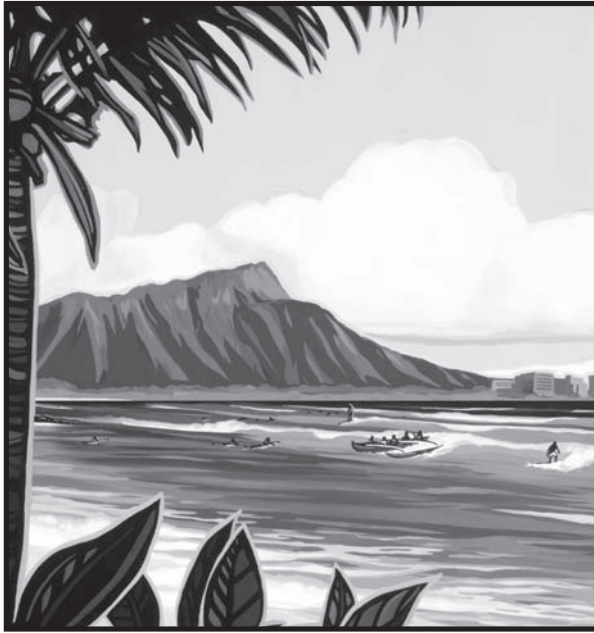


Announcing the return of the Quiksilver Waterman Collection 6th Biennial Hawaiian Islands Vintage Surf Auction



A classic collection of Island-influenced vintage surfboards, Hawaiiana and surf memorabilia.

# Hawaiian Islands Vintage Surf Auction



**July 22 & 23rd, 2011**  
**Blaisdell Center, Honolulu**

**Friday, July 22nd, 2011**

Want to know what your surf stuff is worth?  
 Bring it in for a free "Antiques Road Show"® type appraisal  
 12 Noon to 4:00pm, Galleria Hall

**Saturday, July 23rd, 2011**

Doors open at 10:00am •  
 "Silent Auction" 1:00pm to 3:00pm, Galleria Hall  
 "Main Auction" 4:00pm to 7:00pm, Pikake Room

**Admission Free**

For more information and to Pre-register, contact:

**www.hawaiiansurfauction.com**

Produced by Hawaii Surfing Promotions.

(808) 638-7266 • Fax: (808) 638-7764 • surfpro@hawaii.rr.com

*A benefit for the Outrigger Duke Kahanamoku Foundation Scholarship Fund and The Surfing Heritage Foundation*



## 2011 Triple Crown of Surfing Program Guide

- Official full-color local magazine •

Call today for best ad location

**Ad deadline is Sept. 30**

Reserve your ad space early!

- Hawaiian Pro
- World Cup
- Pipeline Masters

Published by North Shore News

**342-3969**





## Surf Newz by Ace Cool

Howzit North Shore! Hope you all had a Happy and Safe 4th of July weekend! The surf has been near nigh non-existent on the North Shore this summer. There were some little north swells, some easterly trade wind swell wraps from the windward side and even some west/south-west swells wrapping around from town and the west side. Sometimes those west swell wraps only barely show up on the buoy reports, and certain select and elect reefs. The south shore of Oahu has had swells and rumors of swells ever since Mother's Day in May in the true south shore tradition.

There was that one day in mid-June dubbed "Big Wednesday". The surf got up to 8 foot plus Hawaiian scale at places like Browns and Cliffs at Diamond Head. Many other outside reefs along the south coast of Oahu were also firing that afternoon and on the Thursday morning that followed!

Out on the ASP/WCT world tour for the top pro men... the latest venue up for grabs is "Super Tubes" at Jeffreys Bay in South Africa as the boys head into the \$425,000 Billabong Pro South Africa July 16-24.

At this point in the main tour after the Billabong Pro Rio from May 11-22 in Number 1 place is Adriano de Souza of Brazil. Number 2 is Joel Parkinson of Australia. Number 3 is Kelly Slater of USA. Number 4 is Taj Burrow of Australia.

On the women's pro tour after the Rio Pro and heading into the Roxy Pro at Cote des Basques, Biarritz, France these are the rankings for the women on the ASP/WCT circuit after the Billabong Rio Pro May 12-16 worth \$120,000 and heading into the Roxy Pro worth \$110,000 at Biarritz in France from July 11-17. Carrissa Moore of Hawaii is Number 1 on the ASP/WCT women's rankings. Number 2 ranked is Sally Fitzgibbons of Australia. Number 3 is Australian Tyler Wright. Australian Stephanie Gilmore is at #4 and Sylvana Lima of Peru is #5. Coco Ho of Hawaii is still hanging in there at #6 on the rankings.

I had a chance last month to meet and talk with Ultimate Fighter Chris Leben at his "Fight School Hawaii" Club and Gym above Puck's Alley near the University of Hawaii at Manoa. I also got to watch him train. I did NOT spar with him. This is top notch MMA/Kickboxing/Submission Grappling/Strength and Conditioning and more. The phone number is 808 626-5283. Call now and train with a UFC Super-Star. For more info go to "christhecrippler.com".

The 2011 "Hawaiian Islands Vintage Surf Auction" presented by Randy Rarick and his Hawaiian Surfing Promotions Company is held every two summers, usually in July. This year it will be on the 22 and 23 of July. The auction will be held at the Blaisdell. Check out the website for pre-registration and other insider sneak peeks at [www.hawaiiansurfauction.com](http://www.hawaiiansurfauction.com).

The 2011 North Shore Swim Series sponsored by Surf n Sea is ON again this year. The 1st event is the Aloha Salads 1 mile "Summer Sprint" July 2 from Sunset Beach to Pipeline at 9AM. The Cholos 1.2 mile "Waimea Bay Swim" is July 16 at Waimea Bay at 9 a.m. The Jaco 1.6 mile "Chuns to Waimea Swim" is on July 30 at 9 a.m. The Jamba Juice 2.3 mile "North Shore Challenge" is on August 13 from Pipeline to Waimea Bay at 9 a.m. Information at 3728885 and/or [www.hawaiiswim.com](http://www.hawaiiswim.com).

ALOHA...Ace Cool!



**Free Family Movie Night  
at Waialua Community  
Association**



**Secret of  
the NIMH**

**A funny family friendly movie**

Fun for the whole family!

**Friday, July 15 at 7 p.m.**

**FREE ADMISSION**

Drinks & Popcorn for sale



For more information, call 637-4606  
[www.WaialuaCommunityAssociation.org](http://www.WaialuaCommunityAssociation.org)

*The Salvation Army Family Store*

*- Wahiawa store only*

**All clothing 50% off  
every day and  
\$.99 clothing specials  
on Fridays**

*open Mon-Sat 9am-6pm  
subject to change*

For more information contact:

Fred Deisser at 808-522-8425

Located at 322 Sumner St., Honolulu 96797

Across from K-Mart in town



# BULLETIN BOARD



Featuring the largest selection of certified organic produce on the North Shore.  
 No panic...ours is organic.  
 Open 7 days.  
 Mon.-Sat. 9am-6pm.  
 Sun. 9am-5pm

66-445 Kam. Hwy  
 Haleiwa, Hawaii 96712  
 Next to the Post Office  
 808-637-6729 • 808-637-1922 fax

## ROB'S

auto repair service

**Robert Oakley** **Owner**  
 ASE Certified Master Mechanic Waialua, Hawaii  
 Computer & Electrical Specialist (808) 330-0459

## N-C PLUMBING & SUPPLY

Cont. Lic. No. C-8913



- RESIDENTIAL & COMMERCIAL SALES & SERVICE
- CONTRACTING & DESIGN • HOME PLUMBING SERVICE
- PLUMBING FIXTURES, HEATERS • FREE ESTIMATES

Nestor P. Calilao (Owner) Bus: 637-8662  
 P.O. Box 769 Res: 638-5157  
 Waialua, HI 96791 Cellular: 372-8718

email: nncplumbing@hawaii.rr.com

## BOW WOW BUNGALOWS

Licensed Boarding Kennel  
 North Shore, Oahu

Reasonable Rates • Ph. 637-2562

*These Dogs Have Fun!*



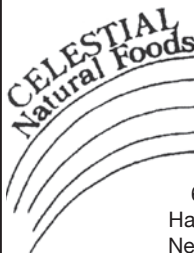
## Waialua Bakery

**New Hours:**  
 Open Monday - Saturday  
 10am - 5:00pm

fresh sandwiches, smoothies, and baked goodies  
**808-341-2838**

Fresh Fruits and Greens supplied by:

**Farmer and The Baker llc**  
**808-341-1992**



Specializing in vegetarian foods, vegan foods, whole foods, organic food.  
 Wheat free, dairy free, raw foods, gluten free. A complete selection of natural foods for 37 years.  
 Make earth day, everyday.  
 Open 7 days.  
 Mon.-Sat. 9am-6pm.  
 Sun. 9am-5pm

66-445 Kam. Hwy  
 Haleiwa, Hawaii 96712  
 Next to the Post Office  
 808-637-6729 • 808-637-1922 fax

## Munden Design & Build

Lic.#BC19632

Design • Plans • Permits • Construction  
 Additions & New Residences  
**808 391-8616**

*Providing quality work since 1978*



## DR. PORTER TURNBULL

Chiropractic Orthopedist

(808) 638-8740

Appointments available Mon.-Sat.  
 (evenings by appointment)

- Industrial accidents & auto injuries
- Sports injuries • Spinal care
- Safe, Effective, and Gentle



"HONEST DEALS ON QUALITY CARS & TRUCKS"

Established 1985

**LINNE HOLMBERG**

Owner

530 Paiea St.  
 Honolulu, HI 96819

Lonestarmotorsportsllc.com

Honolulu: 834-0808

Fax: 834-6602

Cellular: 222-4272



## COWPER CONSTRUCTION

LIC. #AC 18275

GENERAL ENGINEERING CONTRACTOR

Full Service Sitework

Contractor

Septic Systems & Tanks

25 yr. exp.

Michael Cowper 638-7200

cowperhawaii.com

# CASH FOR YOUR ROLEX GOLD & DIAMONDS TODAY

**OUR BUYERS ARE HERE ON THE PREMISES**

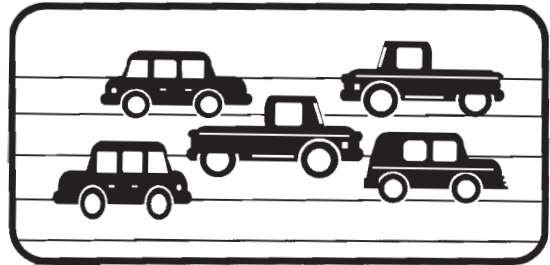


**FROM OUR RETAIL AND COLLECTOR DIVISION**

**TOP DOLLAR FOR ROLEX AND OTHER SWISS WATCHES, DIAMONDS, GOLD ALL THIS WEEK**

**CALL 943-6210 PACIFIC DIAMOND WATCH WHOLESALERS 1356 Kapiolani Blvd.**

## DONATE YOUR VEHICLE running or not



Once A Month Church  
a 501c3 charity serving the North Shore

Over 150 good used cars GIVEN to needy individuals possessing valid driver's license past 5 years.

342-3969  
for more information

### COMMUNITY CLASSIFIED ADS

Heading: (circle) For Sale - Rentals - Services - Lost/Found - Help Wanted - Misc.

Issue Date: \_\_\_\_\_

Name: \_\_\_\_\_

Contact No.: \_\_\_\_\_

Non-business ads – \$3.50 per line, no minimum

Business ads including services – \$5.50 per line, minimum 3 lines

Lost/Found ads – no charge up to 3 lines

Box ads – \$35.00 per column inch

ADS CAN BE DROPPED OFF IN MAIL SLOT, MAILED, FAXED OR EMAILED (NShorenews@aol.com) TO NORTH SHORE NEWS. DEADLINES ARE THE FRIDAY AFTER OUR PREVIOUS ISSUE (THURSDAY IF FRIDAY IS A HOLIDAY). MAKE CHECKS PAYABLE TO: NORTH SHORE NEWS, PHONE ORDERS WITH CREDIT CARDS ONLY.

Print your ad clearly in the space below by using proper spacing and punctuation. We reserve the right to refuse any advertisement with full refund.

**Non-Business Personal Ad**  
**\$3.50 per line • No minimum**  
Includes tax.

**Business Ad**  
**\$5.50 per line (min. 3 lines)**  
Includes tax.

\$3.66																				
7.32																				
10.99																				\$17.27
14.65																				23.03
18.32																				28.79
21.98																				34.55

North Shore News P.O. Box 1117 Haleiwa, HI 96712  
Ph: (808) 637-3138 • Fax: (808) 637-8862



The North Shore News is published every other Wednesday and mailed free of charge to all North Shore homes and businesses. Extra copies may be obtained at our office.

**PRESS RELEASE POLICY:** Submit press releases in person or by fax, mail or email to Editor, North Shore News, P.O. Box 1117, Haleiwa, HI 96712. Please type your releases and keep them shorter than 200 words unless they are of an unusual news interest. Releases should be viable news stories and are published on a **space available basis only**, with priority given to those received in our office first. You may attach photos. We are not responsible for the return of any photos. All materials are submitted at owner's risk. We reserve the right to edit and/or refuse all submissions including advertising.

**EDITORIAL POLICY:** We welcome articles and letters from our readers. Letters to the Editor are published on a space available basis only and preference is given to shortness of length, and quality of content. We prefer to run not more than one letter, per person, per 6 month period. Letters subject to edit.

Views expressed by our contributing writers and advertisers do not necessarily reflect the view of the management and staff of the North Shore News. All rights reserved. Reproduction in whole or part without permission is prohibited. © 2011.

**PUBLISHER/EDITOR**  
RON VALENCIANA

**TYPOGRAPHY**  
DOWNTOWN GENERAL STORE  
**BOOKKEEPING & CLASSIFIEDS**  
LINDA SEYLER

**CONTRIBUTING WRITERS**  
RON VALENCIANA,  
BUTCH HELEMANO,  
NATY HOPEWELL

# CLASSIFIEDS

♥♥Need a minister for a North Shore wedding? Hundreds of knots tied for happy couples on Oahu. Simple beach-side ceremonies to formal church or chapel services. I'll make your special day an extraordinary memory. Call & leave clear message with phone number & possible date, time & place. 342-3969. Also: Vow renewals, house blessings, baby luaus.

**PAUMALU ELECTRIC**  
David C. Hancock  
638-9054 / Lic#C18074

**SHORE ELECTRICAL SERVICE**  
New Const-Remodels  
638-0049 / Lic#C20777

FREE Pregnancy Test  
Above Haleiwa Post Office  
Call for hours 779-4685

LGR Construction  
Remodel • Repair • Design  
Drafting • Painting • Small Jobs  
Affordable rates. 343-4453/Lic#26759

**Dog/Cat Nail Trimming**  
at your home only \$15.00  
Call Julie 637-5395

**Aloha Computer**  
PC Repair/Virus Removal  
Fax/Copy/Internet Access  
372-2667 or 237-4558

**Lawn Care For You**  
Mowing, Trimming, Light Hedging  
Call Thomas 637-5839

**Ross McGerty BC24080**  
349-6359 • 637-9539  
**From Waialua to Sunset**  
**Make Me the First Call**  
for Home or Rental Repairs  
or Renovations

**EXPERT ELECTRICIAN**  
Fans, emergency services, etc.  
Jim Richards 371-9369

**PARADISE PLUMBING INC.**  
New Const • Repairs • Remodels  
808-368-1473 / Lic. 29856

**Holoholo Mobile Screens**  
New Screens • New Frames  
Screen Repairs • Pet Proof Screens  
Sliding Screen Doors • Affordable Rates  
Call Today 783-8764

**BEACH PLUMBING & ROOTER**  
Over 30 years experience  
Call Larry 637-6400

**GOT SOLAR?**  
**Save Money — Help the Planet**  
For info call Jim Richards  
371-9369

**Ohana Clean Up**  
Carpet Upholstery Cleaning  
Pressure Washing  
375-1814 • 979-5579

**Handyman Services**  
Remodeling, Carpentry, Floors,  
Concrete, all parts of Construction  
Call Bob "The nicest guy in the  
business" Ph. 282-2812

**SULLIVAN PAINTING**  
Residential • Commercial • Int/Ext  
Tommy 371-0998 Lic.#C31055

**Pam's Poles**  
Pole Dancing Lessons  
Beginners/Basic  
638-7932

**Massage by Nicole Marie**  
10 yrs experience MAT #8499  
Summer Special \$40 per hour  
499-9360

**Windward Shoe Repair  
& Small Engine Clinic**  
Waialua Shopping Center  
Mon.-Fri. • 8am-4pm  
**234-8135**

**Bikram Yoga**  
*Stretch, strengthen & stimulate mind & body.*  
**All ages and levels.**  
Please call for class schedule  
**637-5700**

**SHIATSU • LOMI**  
Aromatherapy  
Milica Barjaktarovic  
Lic # MAT8348  
351-0848  
HumanRemodeling.com

N.S. Property Maintenance  
Power wash, painting int/ext,  
deck repairs, extensions,  
fences, gates,  
carpentry & remodels.  
Maintenance, lawn & yard.  
Chris 381-5213/638-0659

**North Shore Pumping**  
Cesspool & Septic Pumping  
Complete Plumbing  
Services, new & repairs  
Lic. & insured #25567  
638-0900 • 291-5089

**Lisa Carley Skin Care**  
637-9400  
lisacarley.com  
67-292 Goodale Ave. #104  
Waialua Shopping Center

**LEARN TO SWIM**  
AT THE  
**HAWAII SWIM**  
**SCHOOL**  
ON THE NORTH SHORE  
Developing swimmers since 1982  
Haleiwa Rd. at Smiley Place  
637-4863

**SUBSCRIPTION RATES**

If you live outside the North Shore area on Oahu, neighbor islands, or the mainland, you can subscribe to the North Shore News. Our annual subscription rate is \$27 for 25 issues delivered by standard bulk mail (2-3 weeks), or \$48 for 25 issues delivered by first class postage (3-5 days). Call our office for payment information at (808) 637-3138.

**HOW TO CONTACT THE NORTH SHORE NEWS**

Letters to the Editor, and other items submitted for publication consideration may be sent to us via:

MAIL: P.O. Box 1117, Haleiwa, HI 96712

E-MAIL: NShoreNews@aol.com

FAX: (808) 637-8862

PHONE: (808) 637-3138

**For Advertising Rates,  
call  
637-3138**

# CLASSIFIED ADS

[hawaiiweddingminister.com](http://hawaiiweddingminister.com)

342-3969

31 years experience

## Offshore Plumbing, LLC

Commercial • Residential  
• Septic • Plumbing Design

Mike Duenas, owner  
Lic #C28113  
630-1407

Fax: 637-7870 • Office: 371-3451  
offshoreplumbing@yahoo.com

## BOBBY'S BODIES

Tuesday evenings at 5:00 p.m.

• Body Toning

Friday mornings at 9:00 a.m.

• Cardio Pump/Fat Burner

For more info: call Bobby, owner of  
BOBBY'S BODIES at 637-4150

## Your Clean Home

Specializing in residential/  
vacation homes & property  
management. Experienced/  
reliable and affordable. Green  
cleaning safe for your family  
and our planet!!! Please call for  
free estimate

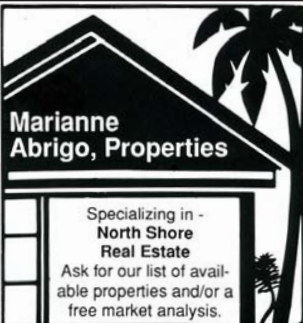
## NORTH SHORE TV

To all earth friendly consumers  
Do you have a TV you no longer  
want or need? Call us first before  
you take it to the dump.

**North Shore TV @ 637-4111**  
**No drop offs without prior  
notification.**

## THE LAWN RANGER

Lawn Maintenance  
no yard too hard  
no lawn too far gone  
We mow betta  
258-6439 Dan Fatchett



**Marianne  
Abrigo, Properties**

Specializing in -  
North Shore  
Real Estate

Ask for our list of avail-  
able properties and/or a  
free market analysis.

**Marianne M. Abrigo**

"Realtor since 1974"

Office 637-3511  
Fax 637-0777  
Email [mabrigo222@aol.com](mailto:mabrigo222@aol.com)

## Automotive Services and Restoration

- Auto Body & Paint
- Detail & Shampoo
- Upholstery

Rick Estrada - 216-9419

## HARVEY'S REPAIR, LLC

24 hrs Towing Service  
*Specializing in opening  
locked car doors*

Call any time 478-0333

## GERMAN CAR SERVICE

Professional-Qualified  
Technician  
Call Gary  
637-6800

## B.E. CONSTRUCTION Dumptruck & Backhoe Services

Equipment, dirt, rock,  
green waste hauling  
in and out

### DEMOLITIONS

BRUCE ESCHE 783-9510

## Flower Designs by Yuki

Wedding • Birthday • Funeral  
Party • and any other occasion

808-366-9104

[www.yukiflowers.com](http://www.yukiflowers.com)  
[yukiflowers@gmail.com](mailto:yukiflowers@gmail.com)

## KA'ALA Cleaning

Home • Vacation • Interior  
eco green • pet friendly  
free estimate 780-3352

## Mel's Cleaning Service

Mokuleia to Laie  
Specializing in vacation  
rentals & residentials.  
All jobs accepted.  
11 yrs. experience, references  
available. 330-7945

## All Area Pool & Yard Service LLC

Pool & Spa Service, Landscape &  
Maintenance. Free estimates &  
reliable service. Levi Christenson  
520-1155

[AllAreaPoolandYardService@  
hotmail.com](mailto:AllAreaPoolandYardService@hotmail.com)

**Next Issue - July 27, 2011**  
**Deadline Date July 14, 2011**

## HELP WANTED

### BUSSERS/SERVERS

Pizza Bob's in Haleiwa is looking  
for BUSSERS/SERVERS. Experi-  
ence preferred. Apply in person  
at 66-145 Kam. Hwy.

### COOKS/KITCHEN HELP

Pizza Bob's in Haleiwa is looking  
for kitchen personnel. Experi-  
ence preferred, but will consider  
training the right people. Apply  
in person at 66-145 Kam. Hwy.

## Retail Sales Surf & Sea

Hawaii's Ocean Sports Headquarters  
is always looking for hard working,  
energetic people to become a part  
of our sales team. Good pay, bonus,  
benefits. Ocean sports experience  
and/or bilingual a plus. Apply in  
person daily 9am-7pm  
62-595 Kam. Hwy., Haleiwa

Farm seeking responsible  
hard working individuals.  
Work included but not  
limited to harvest, prune,  
clean & prep w/ flexible  
hours. Leave a message.  
**Call 707-200-1375**

## FOR RENT

Gmd Fl. Professional/retail  
Space 466sq'/\$1,382.75/month  
Xcel Bldg. Haleiwa 779-7779

## Haleiwa Town

2 bdrm, 1 bath, enclosed porch,  
family room, kitchen, +(2) add'l  
bedrooms or storage rooms and  
carport. \$1800/month  
Available immediately  
Call 838-1202

### Available Space for Rent

Waiialua Community Association (His-  
toric Haleiwa Gym) has 512 sf cottage  
available for rent to a non-profit or busi-  
ness providing services that meet the  
mission of the community center. Con-  
venient location across from Haleiwa  
post office and plenty of parking. Call  
637-4606 for more information.

## MISCELLANEOUS

Haleiwa Town Center  
Retail space for lease.  
636-2222

NS Seventh Day Adventists  
Saturdays 9:15-12:15  
67-174 Farrington Hwy.  
(WUCC, next to WHS)  
Info: 638-8209

## IGREJA EVAN. BRASILEIRA

Domingos 10:00 am  
Quartas 7:30 pm

Sextas-Culto de Oraçao 7:30 pm

Voce e o nosso  
convidado especial

Behind Hale'iwa Post Office  
637-5566  
Pastor Luiz • 638-2212

**Save Sea Turtles**  
**Use Reusable Bags**  
[www.b-e-a-c-h.org](http://www.b-e-a-c-h.org)

## Recycle Plastic Caps & Lids

and help save seabirds

Recycle caps & lids  
are being accepted at:  
Goodwill Industries of Hawaii  
Wahiawa  
823 California Ave.  
Monday-Sunday  
9 a.m. - 5 p.m.

For information:  
[www.b-e-a-c-h.org/recycling](http://www.b-e-a-c-h.org/recycling)  
Ph: (808) 393-2168

## FREE Hazardous Waste Disposal

Special handling  
drop-off events  
Bi-monthly, Saturdays,  
9am-11:45am  
For residential waste only and  
by appointment only.  
Next drop-off day:  
August 6, 2011.  
Call 768-3201 before Friday,  
July 29,  
to set up appointment.  
[www.opala.org](http://www.opala.org)

# CLASSIFIED ADS

## OFF da ISLAND

Are you leaving Oahu on vacation or business? Do you live on a neighbor island, the mainland or foreign country and subscribe to the North Shore News? Try send us a photo of someone in front of a sign or landmark holding a copy of the NSN. Email your photo along with the person or persons' name, community of residence, telephone number and photo location to: NShoreNews@aol.com. Or, mail to OFF da ISLAND Photo, North Shore News, P.O. Box 1117, Hale'iwa, HI 96712. We cannot return photos so please send us a copy. Photos received become the property of NSN. Preference and priority will be given to emailed photos.

## Waiialua Farmers Co-op Market

Fresh Waiialua-grown produce plants & more at the Waiialua Sugar Mill

Sat. 8:30 a.m. - 2 p.m.  
Wed. 4:30 p.m. - 7 p.m.

## BEACH CLEAN UP

Chun's Reef - 10 a.m.  
637-2211

Last Saturday of every month  
adoptabeachhawaii.org

## 2011 North Shore Swim Series Surf N Sea

**Waimea Bay Swim**  
July 16 • 1-2 miles  
Waimea Bay

**Chuns to Waimea Swim**  
July 30 • 1.6 miles  
Chun's Reef to Waimea Bay

**North Shore Challenge**  
August 13 • 2.3 miles  
Pipeline to Waimea Bay  
Information: 372-8885  
hawaiiswim.com

## Sunset Beach Christian School Now Enrolling

Gr. Kindergarten-6th  
CALL 638-8274

## Hale'iwa Arts Festival

July 16 & 17  
at  
Hale'iwa Beach Park

## Bon Dance & Floating Lantern Ceremony

July 22 & 23  
at  
Haleiwa Jodo Mission  
Haleiwa Beach Rd.

Friday & Saturday  
6:30pm Bon Service  
8:00pm Bon Dance

Saturday  
9:00pm Floating Lantern Ceremony

## Bon Dance

at  
Haleiwa Shignon Mission  
Paalaa Rd.

July 15 & 16  
Friday & Saturday  
6:30pm Bon Service  
7:30pm Bon Dance

## Kahuku Public & School Library July 2011 Schedule

Tuesday Night at the Library  
6:30-7:30 p.m.

July 19—Get Ready: Emergency Preparedness with the Red Cross & Kanu Hawaii  
July 26—Family Night Gulliver movie, rated PG at 5:30

**Summer Specials: 10:30 a.m.-Wed.**  
July 13—Formation of the Hawaiian Islands by Bishop Museum  
July 27—Who wants to be an Astronaut? by Bishop Museum  
**Keiki Play-time at 10 a.m. on Thursdays (No storytime in July)**

**Bookmobile:**  
July 18—Route 3: 9-10 Ponds at Punaluu  
10:15-11:30 Queen Liliuokalani C.C.  
July 25—Route 1: 9-10 Rainbow School, Kahuku  
10:15-11:15, Bright Beginning Learning Center  
2:30-4 BYU-HC Family Housing

## Statewide Hotline for Litter

1-888-592-2522

Callers need to provide:

1. License plate number
2. Make and model of vehicle
3. Date and time and location
4. What was thrown/blown

## How You Spell That?

The Once A Month Church lending library is putting out a call for new or used dictionaries, any size. Please drop off your donation at the North Shore News office, 2nd floor of the Haleiwa Post Office

## Outreach Services

Persons with Disability  
Advocacy Benefits Housing  
HCIL 54-113 Kawaipuna St.  
Hauula, HI 96717  
Ph. 293-9775 or 293-9777

## Operation: Backpack 2011

Sponsor a North Shore keiki with a \$25 donation. New backpacks, loaded with school supplies will be distributed to K-12 grade kids and teens. For more info call: 637-3138.

## Save Sea Birds Recycle Caps

www.b-e-a-c-h.org



## Business Services Center

Fast & convenient fax, copy, scan, computer/internet, laminate, etc.  
Across from Haleiwa post office.  
North Shore Chamber of Commerce  
637-4558 or 342-8557

## REUNIONS

The NSN is happy to publish your school or family reunion Free of charge.  
Email your announcement to NShoreNews@aol.com.

## 2011 North Shore Ocean Quest Stand-Up Paddleboard Race

Saturday, August 6, 2011  
9:30 a.m. Waimea Bay

## North Shore Farmers Markets

Haleiwa: 9 a.m. to 1 p.m. Sundays, at traffic signal on the old Kamehameha Hwy at the bypass road.

Waiialua Sugar Mill: 8:30 a.m. to noon Saturdays

North Shore Country Market: 8 a.m. to 2 p.m. Saturdays, Sunset Beach Elementary School, 59-360 Kamehameha Hwy.

Laie: 11 a.m. to 2 p.m. June 24, July 8 and 23, Brigham-Young University-Hawaii, 55-220 Kulanui St.

This August veterinarians are offering lowcost microchipping of pets for a flat rate of \$10, thanks to a partnership with the Hawaiian Humane Society.  
Wahiawa Animal Hospital 621-7000, is a participating veterinary clinic.

## Please Report Stranded Sea Turtles

Call 983-5730 • Mon.-Fri., 7am-4pm  
288-5685 pager w/kends, holidays  
587-0077 and after hours  
Suspected Law Violations  
541-2727 or 800-853-1964  
NOAA Fisheries DLNR-DOCARE

## Ho'ola Like

"Healers Working Together"  
Waikiki Health Center's North Shore Clinic

Majority of Insurance Plans Accepted  
No Insurance - Sliding Fee Available

Open Tuesdays and Thursdays  
8:30 a.m. to 3:30 p.m.

## Walk-ins are Welcome

Emerson Hall, Queen Liliuokalani Church  
66-090 Kamehameha Highway, Haleiwa  
Call 284-5212 for an appointment

Services available at Ho'ola Like  
Medical

Family Medical Care • Physical Exams  
• Urgent Care  
STD & HIV Testing • TB Testing (\$5.00)  
Pregnancy Testing, Birth Control and Family Planning

Hawaiian Healing  
Lomilomi, Ho'oponopono & La'au Lapa'au

Mental Health  
Assistance with Stress Management  
Interpersonal Issues, Problem Solving,  
Depression and Anxiety

Social Services  
Assistance with obtaining identification, medical insurance, food stamps and housing.



MALAMA MARKET HALEIWA:  
OPEN DAILY 7 AM-9 PM  
808.637.4520

MALAMA MARKET MAKAKILO:  
OPEN DAILY 6 AM-10 PM  
808.672.9955

Valid Dates:  
7/13/11-7/19/11

Red Cherries **\$2.99**  
Washington Grown PER LB.



Vitamin Water **5/\$5**  
Selected Varieties, 20 oz.



Blue Bunny Ice Cream **2/\$8.50**  
Selected Varieties, 56 oz.



Chicken Thighs **\$1.29**  
Bone-In, Value Pack, Previously Frozen PER LB.



Charmin Bath Tissue **\$8.99**  
12 Big Roll, Ultra Soft or Ultra Strong



Coca-Cola **4/\$4**  
Selected Varieties, 2 Ltr., Must Buy 4



Whole Dungeness Crab **\$7.99**  
Previously Frozen PER LB.



Hawaiian Isles Water **\$4.99**  
24/500 ml.



Fresh Baked Fresh Bread **\$2.29** EACH



Spam Luncheon Meat **2/\$5**  
Selected Varieties, 12 oz.



Tombstone Pizza **2/\$10**  
Selected Varieties, 12"



Fresh Baked Country Cookies **\$3.99** EACH  
Assorted Varieties, 18 ct.

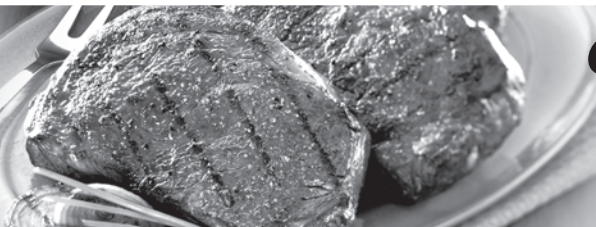


Corona or Stella Artois **\$12.88**  
12 Pk. Bottles or Heineken 12 Pk. Cans or Bottles



**THURSDAY**

INCLUDES:  
**7-8 oz. Steak**  
Rice • Tossed Salad • Drink



**Grilled Steak LUNCH**  
**\$6.99**

Hawaii Beverage Fee of 1¢ per can or bottle will be added to purchase price at checkout. An additional Hawaii Deposit fee of 1¢ will be charged for all specially marked beverage containers.

Limit five units (mix/match) per purchase, unless otherwise specified. We reserve the right to limit quantities. No sales to dealers. Prices plus applicable state tax. Hawaii EBT cards welcomed.