



**"E Ala Na Moku Kai Liloloa"**

Local Food, Crafts &  
**FIREWORKS**  
 Annual Turtle Bay Family Day  
 July 4th • ALL DAY!  
*See page 4*



NORTH SHORE NEWS June 27, 2012 VOLUME 29, NUMBER 13



**Governor spoils Hale'iwa Farmers Market future**

*contact: Pamela Boyar 808-388-9696*

Hale'iwa Farmers' Market operators were shocked to receive a call from the media recently asking for a response to the press release sent by the Governor's office shutting down the current site and the erection of "No Trespassing" signs on the property. Attorneys for HFM have been waiting since Wednesday for a reply from the Attorney General's office regarding the continued extensions to

allow the parties reasonable time to find a new location. Having informed the State that vendors need reasonable notice to stay economically viable, HFM expected a further extension from the State because the State requested until Friday to have an opportunity to respond. The abrupt termination of further negotiations to seek a suitable new site was unexpected and a blow to the Hale'iwa com-

munity as a whole. "I cannot believe this is happening at 1:30 on Friday afternoon, when all our vendors have already picked and prepared their products for the Sunday market. The Governor assured us that we would not miss a market day, so this change of events is a big surprise to us," says market manager Pamela Boyar.

The State suggested three sites

*Continued on page 6*

66-437 Kamehameha Hwy., Suite 210  
 Hale'iwa, HI 96712

PRE-SORTED  
 STANDARD  
 U.S. POSTAGE PAID  
 Honolulu, Hawaii  
 Permit No. 1479

PROUDLY PUBLISHED IN  
**Hale'iwa, Hawai'i**  
*The Surfing  
 Capital of the World!*

# Kawailoa Wind

## A New Wind Energy Project on O'ahu's North Shore



Since 2006, landowner Kamehameha Schools consulted with many North Shore residents and business owners about ways to use their mauka lands to generate renewable energy, while also continuing to promote and expand local food production. With area kupuna to guide the process, they hosted a number of small group meetings, large community meetings, youth forums, mail surveys, and a website, which showed that residents strongly support the idea of a wind farm in the area that would be a clean, local source of energy while maintaining and supporting North Shore agricultural production. That vision will become reality as energy company First Wind begins constructing wind turbines in the hills of Kawailoa that will turn Hawai'i's trade winds into clean, renewable electricity for island residents.

### **What is Kawailoa Wind?**

Called Kawailoa Wind, the project includes 30 state-of-the-art wind turbines that will be installed on land owned by Kamehameha Schools, about 1 to 3 miles mauka of Kamehameha Highway between Waimea Bay and Hale'iwa town. The project is scheduled to be completed by the end of 2012. Once operating, Kawailoa Wind will create enough clean energy to power the equivalent of 14,500 O'ahu homes.

### **Caring for the Environment & Native Wildlife**

In caring for native wildlife, the project will have a Habitat Conservation Plan which ensures a "net benefit" results for native wildlife which may be impacted by the project. As part of this plan, First Wind will work with Kamehameha Schools to restore and protect 'Uko'a Pond in Hale'iwa, improving it as a habitat for native bird and bat species.

### **Promoting Local Food Production**

Lease revenues from Kawailoa Wind will provide Kamehameha Schools with income to improve and expand the century old irrigation system in the area, thereby increasing water availability and distribution for local farmers and ranchers. With a permanent project footprint of about 22 acres, thousands of acres surrounding the site will continue to be utilized for agriculture and cattle grazing.

### **Creating Local, Clean Energy**

As with all First Wind projects, Kawailoa Wind seeks to be a long-term, contributing member of the North Shore community. First Wind and Kamehameha Schools look forward to working with area schools so that the project can become an educational tool for students to learn about renewable energy.

### **For Our Future**

For more information on Kawailoa Wind, visit <http://www.FirstWind.com/projects/kawailoa-wind>. To view the KS North Shore Master Plan, visit [www.ksbe.edu/nsplan](http://www.ksbe.edu/nsplan).

### **About First Wind**

First Wind is an independent wind energy company exclusively focused on the development, financing, construction, ownership and operation of utility-scale wind energy projects in the United States. First Wind operates wind energy facilities in the Northeast, the West and in Hawai'i, totaling 751 MW at 12 sites. The first project the company built was Kaheawa Wind Power on Maui back in 2006. For more information on First Wind, visit [www.FirstWind.com](http://www.FirstWind.com), become a fan on Facebook, or follow us on Twitter @ FirstWind.

***Hū ka makani!***

*May the wind blow towards a sustainable future for our keiki.*

  
**firstwind**<sup>SM</sup>  
 FirstWind.com

YOU NEVER  
KNOW WHO'S  
GOING TO  
DROP IN.

# surfer [THE BAR]

*It's more than a bar. It's an original.*

OPEN DAILY @6PM - CHECK OUT THE LINE UP >

- JUN 28 \*Talk Story Series ftg. Marathon SUP Paddler Morgan Hoesterey Hosted by Jodi Wilmott | Doors open at 6p – Show starts at 8p.
- JUN 30 Comedian Augie-T Live \$10 at the Concierge Desk and the door. Show starts at 8p.
- JUL 4 Michael Rose > 4th of July Party Lead Singer of Black Uhuru performing live ftg. Guidance Roots Music & Dinosouls Tickets: \$35 presale Turtle Bay Concierge and \$40 at the Door. Show at 9p.
- JUL 7 Hiyah Fire > New Album: "On the Rise" now available \$10 at the door. Show starts at 9p.



**SUNDAYS.** Karaoke Night >> Starts at 8p | Non-Ticketed Event.  
**MONDAYS.** Hawaiian Music >> Show starts at 7p | Non-Ticketed Event.  
**TUESDAYS.** Kanikapila >> Show starts at 7p | Non-Ticketed Event with Drink Specials  
**WEDNESDAYS.** Wahine Wednesdays >> Ladies in Free all Night.  
**THURSDAYS.** Talk Story Thursdays >> Surfing legends and their tall but true tales

Space is limited, we suggest ordering tickets for shows in advance.  
 Surfer, The Bar is 21+ after 10p.  
 Visit [SurferTheBar.com](http://SurferTheBar.com) for our full event calendar and updates.  
 \*\$5 charitable donation suggested for Talk Story Nights.

FIND OUT  
WHO IS  
DROPPIN IN  
THIS WEEK.



# 4TH OF JULY. TURTLE BAY. ALL DAY.

COME ENJOY  
Activities, Music,  
Food & Fireworks!



TURTLE BAY



DA HUI WASSUP & TURTLE BAY RESORT PRESENT  
**THE 34TH ANNUAL HUI O HE'E NALU PADDLEBOARD AND STAND UP PADDLE RACE**

July 4th 2012  
2nd Edition  
Turtle Bay to Waimea Bay 7 miles  
Turtle Bay to Waimea Bay 4 miles  
Turtle Bay to Waimea Bay 2 miles

STAGED STARTS, Long courses, J&B divisions 15-45min  
Turtle Bay to Waimea Bay 4 miles  
Turtle Bay to Waimea Bay 2 miles  
Turtle Bay to Waimea Bay 1 mile

Registration: Monday June 25th  
Prizes, Giveaways and MORE!

**@10:30am** LAUNCHING IT'S LONG COURSE DIVISION FROM **Hang Ten**  
the **34th Annual Hui O He'e Nalu Paddleboard & Stand Up Paddle Race**  
with prizes, giveaways & more!

THEN AT THE **Stables, West lawn** (GATES OPEN AT 3 PM)

**@4pm: AUTUMN COMPLEX**  
New to Hawaii's music scene-- an alternative-rock band with members hailing from around the Pacific Rim.

**@5pm: KAMAKA TRIO**  
Falsetto singer with Hawaiian heart & soul, an incredible range, a refreshing talent!

**@6:30-8pm: KAPENA**  
Multiple award-winning leader in Hawaii's contemporary sound

**@ 8-8:30pm: FIREWORKS!**  
Bring your blankets and low back beach chairs (no high back chairs please). In order to ensure a clean & safe environment, we ask that there be no coolers please.

PLUS AT **Surfer, the Bar**

**@9:00pm MICHAEL ROSE**  
Michael Rose, Lead Singer of Black Uhuru performing live! Tickets: \$35 presale Turtle Bay Concierge | \$40 at door | 21+



GUESS WHOS COMING TO DINNER ON JULY 4th

surfer

**MICHAEL ROSE**  
LEAD SINGER OF BLACK UHURU

GUIDANCE BAND  
DINOSAURS  
DJ LILLO  
MC ROCKY CANNON


TICKETS AVAILABLE @ TURTLE BAY CONCIERGE & SURF & SEA HALEIWA

PRE-PALE \$35 AT DOOR \$40



## OFF da Island down Havana, Cuba side

Larry and Susan Luehrs from Oahu told the NSN they had a wonderful time participating on an educational program a while back in Cuba. Here, they posed for a friendly shot in Havana prior to sampling some premium cigars. They reportedly took a recent copy of the NSN to remind them of all the good times back on Oahu's beautiful North Shore. For more info on our OFF the island photo campaign turn to page 23.



*Relaxed sunset dining...*

Happy Hour  
Monday ~ Friday  
3 p.m. ~ 6 p.m.  
Bar & Bar Area

Lunch 11 a.m. to 4:30 p.m. • Dinner 4:30 p.m. to 9 p.m.  
Sunday Brunch 9 a.m.

*Jameson's by the Sea  
located on Oahu's Northshore  
at 62-540 Kam Hwy*

Info and Reservations  
808.637.4336



**Paalaa Kai Bakery**  
Open Daily 530AM ~ 7PM

*Our Ohana wishes you a  
Happy 4th of July!*



*Check out our creamy  
stuffed donuts and danish  
pastries for your weekend  
get together!*

**ALWAYS FRESHLY MADE  
WITH ALOHA!**



**ONO!**

www.pkbsweets.com

## Olakino Maika'i

(Good Health)

by Naty Camit Hopewell

### Hepatitis C

There are vaccines to prevent Hepatitis A and B, but not for Hepatitis C. About 130-170 million are living with chronic Hep C. In the U.S., about 35,000 to 185,000 or 2% of the population are diagnosed each year. Rates in the Western world since the 1990s have declined due to improved screening for Hep C in blood donors. Annual deaths in the U.S. range from 8-10,000.

Hep C is a blood borne infectious disease affecting the liver. About 15% of those infected clear the virus, but the other 85% develop a chronic condition causing scarring of the liver and, eventually, cirrhosis. Some progress to liver failure or liver cancer. This progression may not be evident for decades.

The most common method of transmission in developed countries is IV drug use, due to contaminated needles. In developing countries, the main causes are blood transfusions and unsterilized medical equipment. Body piercings, mainly tattoos, performed before the mid-1980s, are a common cause due to lack of sterile techniques. Shared personal care items, such as razors, toothbrushes and manicuring/pedicuring equipment, can pose a risk because they could be contaminated with blood. Hep C is not spread through casual contact such as hugging, kissing, or sharing eating utensils. Transmission through sexual contact is unlikely in monogamous heterosexuals. However, there is increased risk with penetration through the anus due to tissue tearing and blood exposure.

A simple blood test is the first step in diagnosing Hep C. Anyone involved in any of the above situations should be tested. If you have been told that your liver enzyme is elevated, you should be tested. People who test positively are usually referred to the liver center. The person is evaluated to see whether or not he or she is a good candidate for treatment since not everyone responds to treatment.

*Governor spoils Haleiwa Farmers Market future continued from page 1*

for a new market location, including the Waiialua Courthouse, Liliuokalani Church and Waimea Valley. Each comes with unique obstacles. The Waiialua Courthouse is a tiny parcel that requires Shoreline Management permitting, would require vendors to offload their vehicles from the Kamehameha Highway and drive off-site to park, has limited space only for 20 of the 60+ vendors and no parking for shoppers. Representatives for the congregation of Liliuokalani Church stated that the congregation would reject any commercial activity on the church grounds on Sunday mornings. While the Office of Hawaiian Affairs has been extremely gracious and helpful in their invitation to HFM for relocation to Waimea Valley, the 20+ acre parcel of Conservation and Shoreline Management land creates a difficult puzzle to put together. This option requires significant time and money, and possibly the engineering and erection of a footbridge. Though conversations have begun, the State knows well how long permitting takes. Neither City-owned parks land nor agriculturally-zoned lands are an option, as you cannot sell produce in these areas. Additionally, early in this process, Lorna Nono of Castle and Cooke reached out to see if the Waiialua Sugar Mill was an acceptable location. Annie Suite says, "We were very grateful for the offer, but as we explained to Lorna, when we opened three years ago, we made a very specific decision regarding our HFM and the surrounding farmers' markets, in that we did not want to create any situation which would negatively impact other farmers' markets in the region. Moving to the Sugar Mill location would squash this vital market for the Hale'iwa area. Although there is a significant amount of non-local produce there, we cannot do anything to hurt the few real farmers who participate."

Earlier this week, HFM operators and attorneys met with Kalani Fronda, Senior Land Asset Manager of Kamehameha Schools regarding additional potential sites. Says Pamela Boyar, "Kamehameha Schools agricultural land and OHA's Waimea Valley site are being carefully vetted and we feel certain that one will be our new home. We hope that can happen quickly, but as we all know, things can sometimes move slower than we desire."

For two months, Hale'iwa Farmers' Market has requested multiple meetings with Governor Abercrombie to provide community input and accurate information regarding the operation, but to date there has been no offer to meet or the courtesy of a return phone call.

"We are stunned. Absolutely stunned. In this time of economic upheaval, it is difficult to believe that a simple roadblock cannot be erected to overcome this legality and allow 60 legal small businesses to continue to flourish until a permanent location is found. We have been operating legally on this property for three years. We have offered to pay the State since day one. We have had no issues with safety. Our insurance policy (as well as those of our vendors) is extensive. We do not see the problem in staying here until we get settled in our new home," says Suite. Boyar adds, "Where is the future of sustainable agriculture? These past weeks have seen the loss the prime Agricultural lands including Koa Ridge and Ho'opili, the failure to pass the Sustainability Bill, the closing of Hanalei Market... and now this? When are we going to stop talking about Local Food for Local Consumption, and take some action to preserve it?"

Please visit all of our Farmers' Markets:

Ala Moana Farmers Market 8-12 on Saturdays

Hawaii Kai Farmers Market 9-1 on Saturdays

### MY VISION

- Expand Local Agriculture
- Strengthen Education
- Improve our Economy
- Advocate Responsible Environmental Policies

LAUREN KEALOHILANI  
**CHEAPE**

FOR STATE HOUSE

WWW.LAURENCHEAPE.COM

### Dear Neighbor,

My family came to Hawai'i in 1859 and I am the 6th generation to have been born and raised in our islands. My great-grandfather started Petersons' Upland Farm in 1910 and my grandfather worked at Waialua Sugar Mill. My father is a teacher and my mother is a farmer. As a product of Mililani public schools and the farm, I'm committed to promoting agriculture, education, and opportunity in Hawai'i. I have a passion for the community that my family has been a part of for so long and I am ready to represent you at the State Capitol.



## Sunset Beach Christian School accepting applications for 60th academic year

Sunset Beach Christian School was established in 1953 to serve the children of the North Shore of Oahu. This year will be it's 60th academic year! The aim of SBCS is to develop inquiring, knowledgeable, competent, honorable, and compassionate young people who have the tools, knowledge and character necessary to successfully impact a changing world with the love of Christ. SBCS is offers a small student to teacher ratio, character development, hands on collaborative learning, inquiry based learning and tuition assistance. The staff are student centered, innovative Christian leaders

who are committed to student success.

The Sunset Beach Christian School will begin its 2012-2013 school year on July 30, 2012. Registration days for K-5 through 6th grade are scheduled for July 2 and 3, 2012 from 8:30 am until 4:00 pm. All are welcome! Come to Fellowship Hall on either of these dates and fill out an application and pick up everything you need to start the new school year.

Be sure to celebrate Sunset Beach Christian School's 60th anniversary with us in 2013! Date to be announced!

## Farmer & The Baker LLC (Formerly Mokulcia Landscape & Nursery)



### Trees, Palms & Shrubs

Contact Us: 808-341-1992

### Hawai'i Equine Assisted Reflection & Therapy

#### Youth Summer Programs!

- \*Learn and practice invaluable life skills
- \*Communication, Teamwork, & Leadership
- \*Respect, Responsibility, & Relationships

(808) 561-4184

www.HeartHorses.com



Thank you to our sponsors who have supported our youth summer programs!

The Feed Trough \* Aloha General Store  
Killer Tacos \* Marianne Abrigo Properties



### PKB SUPER SAVER

Save BIG this 4th of July!

Purchase 1 dozen  
**DONUT**  
AND/OR  
**DANISH**

and get 10% off!  
Purchase (2) dozen  
and get 20% off!

PLEASE CLIP AND BRING IN THIS COUPON FOR DISCOUNT.

10% and 20% discount only valid on donuts or danish.

Not combinable with other promotions, discount or VIP cards.

This offer expires July 6, 2012.

www.pkbsweets.com

## The Hale'iwa Family Dental Center, Ltd.



presents

### "Comfort Dentistry" including—

- Relaxation Glasses
- Television Glasses
- Caring Staff
- Special Medication to help you relax
- Laser Cavity Detection
- New Patients Welcome!

Your teeth are much too important to neglect.

**Call: 637-9652**  
for your reservation

We're conveniently located behind First Hawaiian Bank  
in the heart of Hale'iwa.

## Editor's Choice

### TOP 40 Good Choices

by 90 year-old Regina Brett

1. When in doubt, just take the next small step.
2. Life is too short to waste time hating anyone. Change the way you think.
3. Pay off your credit cards every month.
4. You don't have to win every argument. Agree to disagree.
5. Cry with someone. It's more healing than crying alone.
6. Release your children when they become adults, its their life now.
7. Save for retirement starting with your first pay cheque.
8. When it comes for chocolate, resistance is futile.
9. Make peace with your past so it won't screw up the present.
10. It's OK to let your children see you cry.
11. Don't compare your life to others. You have no idea what their journey is all about.
12. If a relationship has to be a secret, you shouldn't be in it.
13. Everything can change in the blink of an eye.
14. Take a deep breath once in a while. It calms the mind.
15. Whatever doesn't kill you really does make you stronger.
16. It's never too late to have a happy childhood. But the second one is up to you and no one else.
17. When it comes to going after what you love in life, don't take no for an answer.
18. Burn the candles, use the nice sheets, wear the fancy lingerie. Don't save it for a special occasion. Today is special.
19. Just because you believe you are right, doesn't mean you are. Keep an open mind.
20. Be eccentric now. Don't wait for old age to wear purple.
21. The most important sex organ is the brain.
22. No one is in charge of your happiness but you.
23. Frame every so-called disaster with these words 'In five years, will this matter?'
24. Always choose life.
25. Forgive everyone everything.
26. What other people think of you is none of your business.
27. Time heals almost everything. Give time time.
28. However good or bad a situation is, it will change.
29. Don't take yourself so seriously. No one else does.
30. Believe in miracles.
31. Your job is to love your children, not choose who they should love.
32. Don't audit life. Show up and make the most of it now.
33. Growing old beats the alternative -- dying young.
34. Your children get only one childhood.
35. All that truly matters in the end is that you loved.
36. Get outside every day. Miracles are waiting everywhere.
37. If we all threw our problems in a pile and saw everyone else's, we'd grab ours back.
38. Envy is a waste of time. You already have all you need.
39. No matter how you feel, get up, dress up and show up.
40. Life isn't tied with a bow, but it's still a gift."



*Coffee!*  
*You can sleep when you're dead!*

6:30AM - 8:00PM

NORTH SHORE MARKETPLACE  
WWW.ROASTMASTER.COM



Hawaii's Best Mexican

**Restaurant & Margarita Bar**

- DAILY SPECIALS -  
LARGE PARTIES WELCOME

Island Fresh Fish Tacos & Premium Margaritas

Open Daily 9:30am-9:30pm Breakfast, Lunch & Dinner

Located in the North Shore Marketplace  
66250 Kamehameha Highway, Haleiwa, Hawaii 96712

637-3059 www.CHOLOSMEXICAN.com



# Anuheia

*Live in Concert*

*Friday, July 6th • 8:00pm*

*\$15 General Admission / \$10 Annual Pass Holder*

See Anuheia live in concert with special guest Nesian N.I.N.E. Enjoy two of Hawaii's most popular local acts perform at our newly renovated Gateway venue.

This is the only chance to see Anuheia on Oahu this Summer. For tickets, call 293-3333.



*with special guest  
Nesian N.I.N.E.*



PCCkamaaina.com

## Polynesian Cultural Center hosts summer concert featuring Anuheia and Nesian N.I.N.E

*Popular Local Artists to Perform in PCC's Newly Renovated Gateway Venue on July 6*

Na Hoku Hanohano award-winner Anuheia and local group Nesian N.I.N.E., two of Hawaii's most popular local acts, will perform live at the Polynesian Cultural Center's (PCC) newly renovated Gateway venue on July 6.

With a delicate balance of fragility, strength and sass, singer/songwriter Anuheia blends engaging lyrics, acoustic soul, pop, rap and reggae into a style that has earned her a reputation as Hawaii's top female artist. Anuheia's signature guitar rhythms, sultry vocals and honest song writing weave acoustic soul, R&B, jazz and hip hop with pop appeal, making Anuheia Hawaii's rising star.

Nesian N.I.N.E (Natives Inna New Era) has been together since 2008 and has shared the stage with some of the biggest names in the music industry including Boyz II Men and Brian McKnight. Their incorporation of old school vibes blended with just the right touch of island feel allows them to do it all, from reggae, R&B and soul ballads, to old school.

"We are very excited to host Hawaii's brightest musical stars at the PCC. We look forward to welcoming their fans and all who enjoy the talent and positive vibes these artists will bring to PCC this summer," said Raymond Magalei, PCC's director of marketing. "This is just one of many concerts we have planned. Earlier this year we hosted an intimate Valentine's evening with Natalie

Ai Kamaau and her special guest performer Kapena and just last month we had a mother's day dance with live music provided by Island Times 2."

The July 6 concert is scheduled to start at 8 p.m. in the PCC's grandiose new Gateway special events venue. The 24,400-square-foot venue provides an ideal location for concerts and features shell torches that provide ambient lighting along with a state-of-the-art cooling system, which continually circulates the air in Gateway, enhancing the natural breeze that runs through the restaurant.

Tickets to this summer concert are \$15 pre-sale and \$10 for Kamaaina Annual Pass holders. To make reservations call the PCC ticket office at (800) 367-7060. On Oahu, call 293-3333. For more information visit PCCkamaaina.com

Founded in 1963 as a non-profit organization, the Polynesian Cultural Center (PCC) has entertained more than 36 million visitors, while preserving and portraying the culture, arts and crafts of Polynesia to the rest of the world. In addition, the PCC has provided financial assistance to nearly 17,000 young people from more than 70 different countries while they attend Brigham Young University-Hawaii. As a non-profit organization, 100 percent of PCC's revenue is used for daily operations and to support education.



**A Message From  
State Representative  
Gil Riviere**

Aloha, North Shore.

Many residents have contacted my office regarding hardships caused by changes to TheBus routes and schedules. On June 3rd, the Circle Island Routes were eliminated; Routes 52 and 55 now terminate at the Wahiawa Transit Center.

Route 52 operates between Wahiawa and Ala Moana, more or less directly. Route 55 starts and ends at the same places as 52, but its route transits the North and Windward shores.

The most severe impact of these changes is the reduction of frequency from 40 minutes to hourly service. Reports are coming in that many more buses are overloaded and connections to other routes are much more limited. Instead of commute times of two hours, some riders now spend four hours getting home from Honolulu.

TheBus is asking for comments with specific facts so that they can modify and adjust the schedules. They need to know as many details as possible, including the bus route, direction, time of day, locations of where riders board and exit, where buses became

crowded, and other useful observations specific to that particular incident.

Email specific observations to TheBusStop@hawaii.gov or comment on-line at TheBus.org. Look for the Customer Comment link in the lower left of the page. You can also call in comments to 768-8303.

Waiialua has an All-Star Bobby Sox team that needs help getting to the mainland for its tournament next month. The 12 players and coaching staff of the Under 16 team have to raise \$25,000 to pay for their airfare, seven nights accommodations, transportation, food and miscellaneous travel expenses.

The girls are working several fundraising projects; the main event will be on July 15 at the Shack in Mililani from 5 to 10 p.m. The suggested donation of \$10 covers entertainment and pupu. A special drawing will be held for two round trip plane tickets to Las Vegas.

Please call Marielyn Keao at 864-7355 or email her at alei\_808@yahoo.com to make your tax-deductible contribution or to find out more about the team.

The North Shore Ocean Fest was a big success. The organizers are already planning the second annual event at the Turtle Bay Resort for next June 8th, World Oceans Day. Congratulations to Dotty Kelly-Paddock and the numerous volunteers for a great event!

Questions, comments and requests are always welcome by calling my office at 586-6380 or by sending an email to RepRiviere@capitol.hawaii.gov. Mahalo.



**THE BLUEGRASS  
BARNSTORMERS**

**Sunday  
July 1st  
4 PM - 5:30 PM  
Waiialua Bandstand  
(next to the Waiialua Sugar Mill)**

Great music!  
Bring your lawn chairs and  
join in the fun!

**Quality Tile Crafts**

"No job too big or small!"

Specializing in Ceramic Tile,  
Travertine, Marble, & Slate

Kevin Wilson

cell (808) 864-4985 office (808) 638-8492  
www.QualityTileCrafts.com Free Est.



**CHUCK JAMES  
MUSIC STUDIO**

**GRAND OPENING PARTY**

Sunday, July 1, 2012 • 1:00pm - 5:00pm  
10 N. Kam. Hwy. Wahiawa HI 9679 • Call 626-5754  
**LIVE MUSIC • FOOD • STUDENT RECITAL**

**MUSIC LESSONS**

**PIANO • GUITAR • DRUMS • BASS • UKULELE  
VIOLIN • SAX • FLUTE • TRUMPET • VOICE  
NEW HIP HOP DANCE CLASSES**



# ***Gil Gets It Done!***

Re-Elect Representative  
**Gil Riviere**

**House District 47**

Waialua, Haleiwa, Pupukea, Sunset Beach, Kahuku, Laie,  
 Hauula, Punaluu, Kahana, Kaaawa, Waikane, Waiahole

## **Primary Election Day is August 11**

Democrats, Republicans and Independants can all vote for Gil in the Primary Election.  
 Your vote matters and Gil needs your vote in this election.

### **Representative Gil Riviere**

Representative Gil Riviere was one of the most consistent and strongest voices this year against what became known as the Dirty Dozen Anti-Environment Laws, which were nearly all defeated.

Thanks to excellent relationships with other members in the House, Gil successfully amended bills that could have devastated our district. He prevented the exemption of all land subdivisions from special management area permits and the allowance of vacation rentals on Oahu's agricultural lands.

Observers note that he delivers effective floor speeches, offers solid research and treats everyone, from staff, to governmental leaders, to the public, with courtesy and respect.

Gil repeatedly demonstrates his dedication with initiatives to preserve, protect and improve the quality of life of those he represents.



*Janine, Gil, Liz and Jake Riviere*



Re-Elect Representative  
**Gil Riviere**®



**Direct From  
Donovan  
State Senator  
Donovan Dela Cruz**

I am pleased to report that the following measures I introduced were passed by the Legislature this past session:

SB2375 – Relating to agricultural based-commercial operations. Defines agricultural-based commercial operations and authorizes agricultural/commercial operations in agricultural districts.

SB2378 – Relating to legacy lands. Allows for the acquisition of lands through the legacy conservation funds for regulatory functions of the state.

SCR84 – Expresses the State's support of the Hawai'i Public Housing Authority's application for a Choice Neighborhoods grant. If awarded, this grant will help transform distressed neighborhoods and public and assisted projects into viable and sustainable mixed-income neighborhoods by linking housing improvements with appropriate services, schools, public assets, transportation, and access to jobs.

SR38 – Urges DLNR to come up with laws that will allow hunters to access private land. The resolution asks the Attorney General's office to consult with DLNR to evaluate the feasibility of establishing laws to require written permission from the land owner in order to hunt on private lands and to discuss potential amendments to criminal trespassing laws to address hunting situations.

SR58 – Urges DLNR to expand the scope of the comprehensive information system to inventory and maintain information about the lands of the public land trust to further include public facilities, thereby creating a comprehensive asset management system for public lands and facilities. Given the dire economic situation of the State, it is important that all state agencies work together to ensure that all lands and facilities are being used to their

fullest potential.

SR59 – Urges the Office of Planning to conduct and complete regional plans and studies every five years as required by statute to allow future development to benefit the needs of the State. The Office of Planning's purpose is to maintain the overall framework to guide the development of the State through a continuous process of comprehensive, long-range, and strategic planning to meet the needs of Hawai'i's people, and provide for the wise use of Hawai'i's resources

SR76 - Urges the Honolulu Authority for Rapid Transportation to determine cost-effective and revenue-generating ridership levels for the rail transit system and submit a report of its findings to the Legislature at least twenty days prior to the convening of the Regular Session of 2013.

SR101 – Requests the Agribusiness Development Corporation to acquire land for improvements to its infrastructure necessary to achieve its mission to acquire and manage, in partnership with farmers, ranchers, and aquaculture groups, selected high-value lands, water systems, and infrastructure for commercial agricultural use and to direct research into areas that will lead to the development of new crops, markets, and lower production costs.

SR103 - Requires the Office of Planning to coordinate with all state agencies that hold title to or leases of land along the elevated rapid transit line route to develop a community development plan for communities along the route.

SR105 - Requests the Public Land Development Corporation to submit a semi-annual report to the Legislature and the board of directors of the corporation to submit an annual evaluation of the executive director of the corporation to the legislature.

**wanna learn?  
NORTH  
SHORE  
JIU-JITSU CLUB  
try it out free!  
men-women-kids  
NorthShoreBJJ@GMail.com**

Kahuku Public & School Library will offer special summer events in June 2012. All children must be accompanied by a parent or caregiver at all times. Admission is free:

\* June 20, 10 a.m. - "Cake Pops and Mini-Doughnut Decorating." Children ages 5 and older are invited to learn how to make cake pops and decorate mini-doughnuts to take home to share with family members or to eat as a snack afterwards. Registration is requested and limited to 25 children; call the Library or sign up at the Circulation Desk.

\* June 28, 11 a.m. - "Who Wants to Be an Astronaut?" Bishop Museum staff members will share information and discuss what it takes to become an astronaut. This program is designed for children ages 5 through 10.

Contact the Library as soon as possible if a sign language interpreter or other special accommodation is needed for these programs.

Kahuku Public & School Library is located on the Kahuku High and Intermediate School campus, at 56-490 Kamehameha Highway. For more information or to register, please call the Library at 293-8935.



# WAIALUA

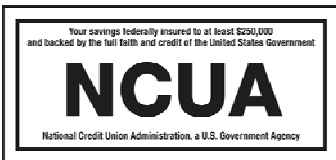
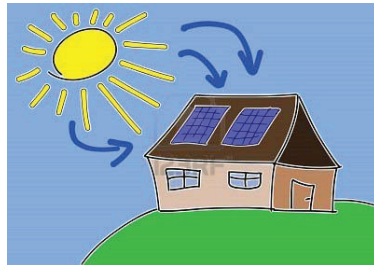
Federal Credit Union



**Looking to install Solar Photovoltaic?  
Consider a Home Equity Loan from Waialua FCU.  
No closing costs and a low interest rate can help you on  
your way to lowering your electricity bill.**

**Current HELOC Rate is 3.75% APR\***

\*Annual Percentage Rate based on an index of 3.50% plus the monthly average of the 26 week Treasury Bill (Auction High) and may be adjusted annually each March. Please call for more details.



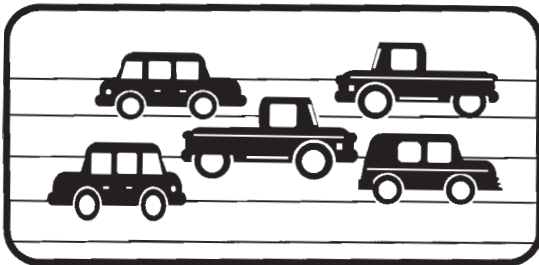
You are eligible to join if you live or work in Waialua or Haleiwa.

Phone: 637-5980 Located in the Waialua Shopping Center



## DONATE YOUR VEHICLE

running or not



Once A Month Church  
a 501c3 charity serving the North Shore

Over 150 good used cars GIVEN  
to needy individuals possessing  
valid driver's license past 5 years.

342-3969  
for more information

## SAVE THIS DATE!!!

Saturday, October 13, 2012  
9:00 a.m. to 2:00 p.m.

### HALEIWA JODO MISSION'S ANNUAL CRAFT FAIR

66-279A Haleiwa Road

\*\*\*\*\*  
\* Interested in selling your crafts? Please call 637-4382 or write to \*  
\* [haleiwajodominionya@gmail.com](mailto:haleiwajodominionya@gmail.com) for more information. \*  
\*\*\*\*\*

## BREAKFAST 7 AM to 11 AM DAILY



Haleiwa Shopping Plaza - 637-5095

**PLUS \$2.00 Off with this Coupon**

Some Restrictions Apply. See Restaurant for Details.  
When Ordering Regular Priced Items. Good Anytime. One Coupon Per Person.  
Can Not Be Combined with Other Discounts. Expires 08/31/2012.

# Teen beauty appeals to North Shore community for sponsorship

Dear Family, Friends and Community Members:

Aloha, I am Mariefel Langaman and I was born and raised on the North Shore of Oahu. I am 16 years old and currently attend Waialua High and Intermediate School.

One of my dreams growing up was to have the opportunity to participate in a pageant and now the opportunity is right in front of me. I have been chosen as a contestant in the Miss Hawaii Teen Beauty Pageant 2012, which will be held on November 17, 2012 at the Leeward Community College Theatre. I am honored to say that I will be representing my beautiful hometown of North Shore during this challenging event.

Participating in this event is easier said than done. I would need sponsors. It will cost me money to get the appropriate training, clothing, accessories, makeup, hairdo, etc. I am kindly asking for my community's support to prepare and participate in this dream come true event. Your generous donations would be greatly appreciated at this time.

Mahalo,  
Mariefel Langaman

I may be contacted by email at: [mariefel.langaman@yahoo.com](mailto:mariefel.langaman@yahoo.com)



**SURFING THE NATIONS**  
SURFERS GIVING BACK

GET INVOLVED | [www.surfingthenations.com](http://www.surfingthenations.com)

FOR NEARLY 33,000 HAWAII CHILDREN, THEIR HARDEST ASSIGNMENT WAS FINDING THEIR NEXT MEAL.

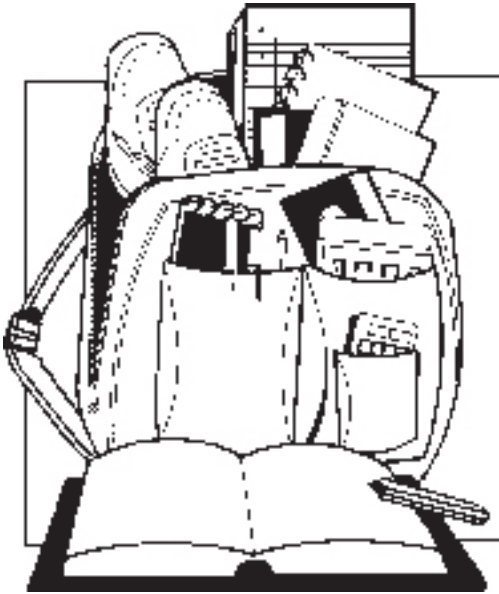
**HAWAII FOOD BANK**

YOUR CONTRIBUTION IS CRITICAL. PLEASE DONATE NOW.

For more information on how to donate, visit [hawaiifoodbank.org](http://hawaiifoodbank.org) or call 954-7870.

This ad paid for as a community service by:

# OPERATION: BACKPACK '12



**'12 Goal: 350 Backpacks!**

We have a growing list of 300+ homeless & disadvantaged students that need your help to get a new back to school BACKPACK, loaded with needed school supplies.

## HERE'S HOW YOU CAN HELP!

Call the North Shore News office at 637-3138, and tell us how many keiki your family, your business, your church or your organization wants to sponsor. Last year we gave out 300+ backpacks to needy keiki.

**DEADLINE TO SPONSOR IS**  
(Please help!) **JULY 23**

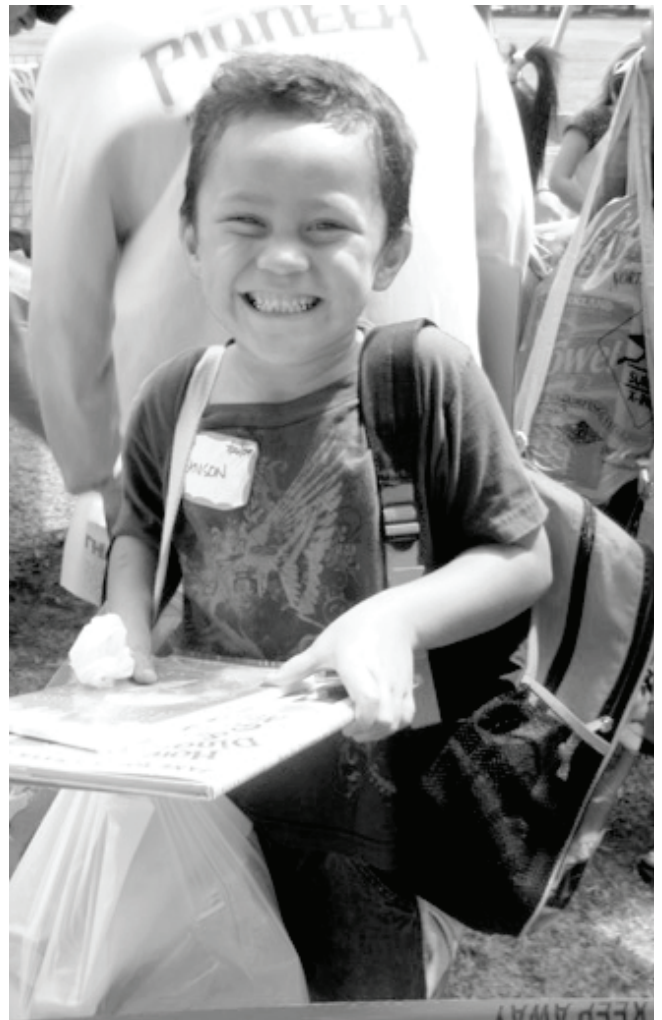
## TWENTY-FIVE DOLLARS WILL DO IT!

\$25 dollars will sponsor a  
NEW backpack LOADED with these  
school supplies

*Composition books, elmer's glue, #2 pencils, erasers, sharpies, hi-liter, colored pencils, crayola markers, scissors, ruler, school cases, crayons, watercolors, 3 ring binders, 3 subject folders, scotch tape, index cards, pens, glue sticks, plus other age/grade specific items.*

**Call 637-3138**

**to sponsor a  
North Shore keiki  
or send your donation  
to the address below.**



Make check payable to: O.A.M.C. or Once-A-Month Church, P.O. Box 1117, Haleiwa, HI 96712

# Waiialua - The Saga of the North Shore

## Chapter 12 - Pohaku Lanai

By Kalewa

Offering up the fruits and fat of Mokuleia, and Kamananui Apua`a at the Kahakahuna Heiau the following day, Puiki introduced the Mo`i to his relatives, the headmen of the neighborhood and his most promising young men. Peleiolani gave Puiki a small feather cape with a matching helmet of sturdy weave. Soon bundles of



fine tapa, Ni`ihau shell lei and other commodities from around Peleiolani's domains were being spread throughout the crowd.

The procession was soon underway in a rather rushed circuit of the island. Haste was demanded by the fact that a warrior chief named Alapa`i had come from Hawai`i with the intention of plundering O`ahu, should there be no ruler strong enough to prevent it. His landings had been repulsed along the southern coast, but Alapa`i had made an unopposed landfall near Mokapu. Peleiolani's family members had arranged for a meeting to take place as soon as possible in Kaneohe. Word was that the invasion fleet was already beginning to anchor off shore while defensive troops were encamping in the lowlands.

It was most important that certain ceremonies take place at Kapukapuakea Heiau (at Kaiaka Park) later that evening. Puiki was assigned the job of recruiting all the manpower he could muster for the gathering of warriors. Each man was advised to carry a weeks worth of dried poi and whatever else he wished. Women were welcome as well.

Kapukapuakea Heiau had been freshly done up for this occasion. A team of kahuna had agreed on the protocol to assure that all proper things were done to establish beyond any question of any kind that Peleiolani was by every possible definition, the Mo`i, king, ruler, owner, consumer, and ultimate governor of O`ahu, as well as much of Kaua`i and Ni`ihau. An appropriate number of cadavers had been gathered for the sacrificial ceremonies.

Puiki was most proud to show off an engineering feat he and his men had recently accomplished. He explained that before the time of Kualii, about sixty years earlier, a series of great waves had cast up huge hale-sized boulders of the coral underlying the point of land there. Two large lens-shaped coral stones had been wrestled, one atop the other, balanced in such a manner that the upper resonated when properly struck. Puiki proudly announced the structure's name as "Pohaku-Lanai", as he invited the Mo`i to sit in the shade that it produced.

There were some administrative decisions to be made that evening. The boundary between Kamananui and Pa`ala`a had been in dispute for some time. That was settled and a few changes were made concerning minor chiefs ruling over certain apua`a. Some wished to change properties to be closer to kin and some were found to be unsuitable for governance. Those who's loyalty was questioned in any way were all kept in court with others overseeing their people.

Stopping the following day in Kawailoa only long enough to consume the glutinous seafood lu`au that had been laid out for the king adjacent to Ukoa Pond, the procession, now turned into an Army, rushed on around the island gathering war supplies and manpower along the way.

The summit meeting of the two great chiefs was concluded by each recognizing the other's authority as well as their mutual family ties. Alapa`i went off to war on Maui while Peleiolani stayed to rule O`ahu....but they were soon to meet again.



# Sacred Falls State Park remains closed to public

## Enforcement officers continue to cite trespassers

The Department of Land and Natural Resources (DLNR) reminds the public that Sacred Falls State Park remains closed to the public, for public safety.

Today a juvenile male was injured in the park while trespassing with two other persons. The injured youth was rescued by the Honolulu Fire Department, assisted by Honolulu Police Department and taken to a nearby hospital. HFD in April this year also rescued an injured hiker in the park.

“Exposure to falling rock hazards remains severe at Sacred Falls, and rockfall warning and multiple “PARK CLOSED” signs are posted at the park gate as well as at locations along the trail,” said William J. Aila, DLNR Chairperson. “People entering the now unmaintained park are putting themselves at risk of injury or death.”

“We encourage all persons to respect the park closure, and to safely enjoy our other State Park areas or hiking trails within the Na Ala Hele Trail System of State Forest Reserves,” said Dan Quinn, State Parks administrator. “Other popular waterfalls on O’ahu include Maunawili Falls, and Manoa Falls.”

DLNR Division of Conservation and Resources Enforcement (DOCARE) officers also responded to today’s accident and are investigating to determine what enforcement action may be taken. DOCARE



officers continue to cite numerous persons who are climbing over or going around the locked fence and ignoring the park closure and warning signs.

Entry into a closed park is a petty misdemeanor offense, a violation of Hawaii Administrative Rules and subject to administrative, civil and criminal penalties, as provided by Hawaii Revised Statutes section 184-5, section 199-7 and chapter 712A.

Sacred Falls has been closed by the State for public safety reasons ever since a deadly rockslide in 1999 that claimed eight lives and injured numerous other park users.

For park or maintained hiking trail information go to [www.hawaiistateparks.org](http://www.hawaiistateparks.org) and [www.hawaiitrails.org](http://www.hawaiitrails.org) respectively.

**We Pay You  
\$100  
CASH & FREE  
TOWING  
for unwanted vehicles  
(complete)  
636-7183  
North Side Towing**

**CAR WASH !**



Starting at \$5  
Saturday, August 4, 2012  
8am to 1pm  
Waialua Community Assoc. in Hale'iwa

Proceeds to benefit the North Shore Food Bank  
Sponsored by the Once A Month Church  
(to volunteer or donate call 342-3969)  
OK to bring food donation too

**surfer** THE SUNDAY CHAPEL



It's not just for resort guests...  
**Surfers, Saints & Sinners are welcome!**

Every Sunday at 9am in the beautiful  
oceanside wedding pavilion.  
\*Non-denominational 45 min. service  
\*Traditional & Contemporary music  
\*10 minute sermon !  
Hosted by Pastor Ron Valenciana - 808-342-3969

**TURTLE BAY RESORT**

*When church is pau enjoy dining at the Palm Terrace Cafe, Hang Ten  
Pool Bar, Lobby Cafe or Leilei's*



# 2012 Triple Crown of Surfing Program Guide

- Official full-color local magazine •

Call today for best ad location

Ad deadline is Sept. 28

Reserve your ad space early!

- Hawaiian Pro
- World Cup
- Pipeline Masters

Published by North Shore News

342-3969

NShoreNews@aol.com



**CASH**  
FOR YOUR  
**ROLEX**  
GOLD & DIAMONDS  
**TODAY**

OUR  
BUYERS  
ARE  
HERE  
ON THE  
PREMISES



FROM  
OUR  
RETAIL  
AND  
COLLECTOR  
DIVISION

**TOP DOLLAR**  
FOR ROLEX AND OTHER  
SWISS WATCHES, DIAMONDS, GOLD  
**ALL THIS WEEK**

**CALL**  
**943-6210**

**PACIFIC DIAMOND**  
**WATCH WHOLESALERS**  
1356 Kapiolani Blvd.

## North Shore Food Bank

You can help feed the North Shore's homeless & hungry by donating non-perishable canned foods to the North Shore Food Bank located in the North Shore News Office above the Hale'iwa Post Office.

**637-3138**

Prefer to contribute financially?

Check can be made out to:

Once A Month Church

P.O. Box 117, Hale'iwa, HI 96712

### TOP 5 MOST NEEDED ITEMS

- Financial Contributions
- Canned meats or tuna
- Canned meats & soups
- Canned vegetables & fruits
- Canned beans

*No donation is too small.*

*501c3 non-profit*

## DRAFTPLANS HAWAII

- Over 10,000 floor plans & blueprints available for purchase online. Gather ideas for your own design.
- Drafting Service available for new home designs, additions, renovations, decks, fence, rock walls, etc.
- Free property specifications & title search info.

[www.draftplans.com](http://www.draftplans.com)

Call for free estimates:  
**265-0035**



# BULLETIN BOARD



Featuring the largest selection of certified organic produce on the North Shore.

No panic...ours is organic.

Open 7 days.

Mon.-Sat. 9am-6pm.

Sun. 9am-5pm

66-445 Kam. Hwy  
Haleiwa, Hawaii 96712  
Next to the Post Office  
808-637-6729 • 808-637-1922 fax

## FMS

**Financial Management Solutions**  
Income Tax Services, Comprehensive Financial Services, and Insurance Planning

Complete Financial Services are available on-line.  
Please visit our website for more details.  
Virtual Office Address:

[www.FMS-USA.com](http://www.FMS-USA.com)

Office: 1-855-753-7750 • Fax: 1-866-307-3330 • Email: [amber@fms-usa.com](mailto:amber@fms-usa.com)

Amber M. Dole, Registered Representative, H.D. Vest Financial Services, Inc. Securities Offered Through H.D. Vest Investment Services SM, Member SIPC A non-bank subsidiary of Wells Fargo & Company, 6333 North State Highway 161, Fourth Floor, Irving, Texas 75038, 972-670-6000

## N-C PLUMBING & SUPPLY

Cont. Lic. No. C-8913



- RESIDENTIAL & COMMERCIAL SALES & SERVICE
- CONTRACTING & DESIGN • HOME PLUMBING SERVICE
- PLUMBING FIXTURES, HEATERS • FREE ESTIMATES

Nestor P. Calilao (Owner)  
P.O. Box 769  
Waiialua, HI 96791

Bus: 637-8662  
Res: 638-5157  
Cellular: 372-8718

email: [nnclumbing@hawaii.rr.com](mailto:nnclumbing@hawaii.rr.com)

Specializing in vegetarian foods, vegan foods, whole foods, organic food. Wheat free, dairy free, raw foods, gluten free. A complete selection of natural foods for 37 years. Make earth day, everyday.

Open 7 days.  
Mon.-Sat. 9am-6pm.  
Sun. 9am-5pm

66-445 Kam. Hwy  
Haleiwa, Hawaii 96712  
Next to the Post Office  
808-637-6729 • 808-637-1922 fax

## Munden Design & Build

Lic.#BC19632

Design • Plans • Permits • Construction  
Additions & New Residences

**808 391-8616**

*Providing quality work since 1978*

## NORTH SHORE AUTO SALON

66-540 Kamehameha Hwy., Haleiwa  
(Right behind TESORO gas station)

Wash & Wax, Vacuums, Remove Waterspots  
Interior Shampoos, Polish Rims, Polish Motorcycles, etc

**\$5 OFF** with this ad/ Package A thru E  
**312-8511**

[northshoreautodetailsalon.com](http://northshoreautodetailsalon.com)

[northshoreautosalon@yahoo.com](mailto:northshoreautosalon@yahoo.com)



## DR. PORTER TURNBULL

Chiropractic Orthopedist

(808) 638-8740

Appointments available Mon.-Sat.  
(evenings by appointment)

- Industrial accidents & auto injuries
- Sports injuries • Spinal care
- Safe, Effective, and Gentle

## HAIR SPECIAL

Full Highlight and Cut \$100.00

## GINA WALKER

Hairdresser to the stars  
from Malibu, CA  
Senior Stylist & Color Master  
*20 years experience*  
**North Shore Salon & Spa**  
in Haleiwa Town 808-375-3984



**GROVER MASONRY**

**Rick Grover**  
(808) 983-9331 cell  
(808) 638-8120 office  
[rick@grovermasonry.com](mailto:rick@grovermasonry.com)

License # C-18302

LIC. #AC 18275

## COWPER CONSTRUCTION

**GENERAL ENGINEERING CONTRACTOR**

Full Service Sitework  
Contractor  
Septic Systems & Tanks  
25 yr. exp.

Michael Cowper 638-7200  
[cowperhawaii.com](http://cowperhawaii.com)

# BULLETIN BOARD



"HONEST DEALS ON QUALITY CARS & TRUCKS"  
Established 1985  
**LINNE HOLMBERG**  
Owner

530 Paiea St.  
Honolulu, HI 96819

Honolulu: 834-0808  
Fax: 834-6602  
Cellular: 222-4272

Lonestarmotorsportsllc.com

Asian Pacific Investments

**Glen Miyamoto**

REALTOR - ASSOCIATE

CENTURY SQUARE  
1188 BISHOP STREET, SUITE 2511  
HONOLULU, HI 96813

OFFICE: 808-714-9993  
EXT. 5  
DIRECT: 808-224-1608  
FAX: 808-440-0046

glen@asianpacificinvestments.com  
www.asianpacificinvestments.com



**THE RAINBOW  
BALLOON MAN**

**864.9599**

albertnakanishi@aol.com  
Parties • Special Events

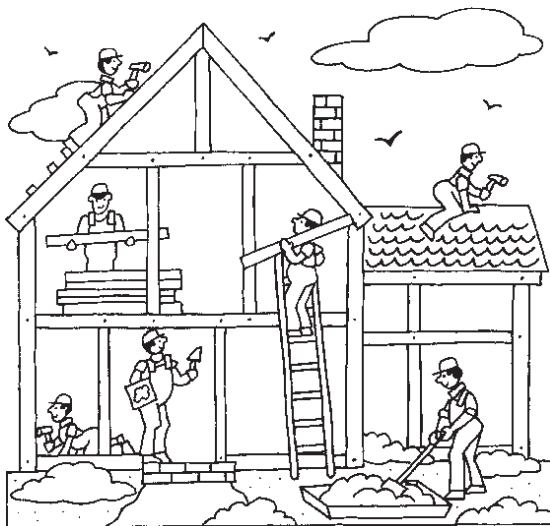
**SUNSET AUTO SERVICE, INC.**

- Auto air conditioning specialist
  - Auto engine maintenance
  - Safety inspection station
- Walking distance to Wahiawa DMV

Call for appointment  
622-5510

Matt Verdadero  
207 N. Cane St., #1 Wahiawa

**"THE BULLETIN BOARD THAT IS IN EVERYONE'S HOME"**



## Attention!

- Contractors • Plumbers • Masons  
• Electricians • Painters • Banks •  
Carpenters • Roofers • Landscapers  
• Locksmiths • Lawncare-Gardening •  
Pool Builders • Maintenance  
• Hardware Stores • Yard Service •  
Tree Trimmers • Housecleaners

**PUBLICATION DATE:**

**July 25, 2012**

**DEADLINE: July 13, 2012**

Don't miss our annual

## HOME IMPROVEMENT EDITION

Advertising Deadline is Friday, July 13, 2012

**Call today for the best prices and page location**

Advertising in the North Shore News puts your ad  
into 10,000 homes by direct mail. 14,000 total copies printed.

**342-3969**



The North Shore News is published every other Wednesday and mailed free of charge to all North Shore homes and businesses. Extra copies may be obtained at our office.

**PRESS RELEASE POLICY:** Submit press releases in person or by fax, mail or email to Editor, North Shore News, P.O. Box 1117, Haleiwa, HI 96712. Please type your releases and keep them shorter than 200 words unless they are of an unusual news interest. Releases should be viable news stories and are published on a **space available basis only**, with priority given to those received in our office first. You may attach photos. We are not responsible for the return of any photos. All materials are submitted at owner's risk. We reserve the right to edit and/or refuse all submissions including advertising.

**EDITORIAL POLICY:** We welcome articles and letters from our readers. Letters to the Editor are published on a space available basis only and preference is given to shortness of length, and quality of content. We prefer to run not more than one letter, per person, per 6 month period. Letters subject to edit.

Views expressed by our contributing writers and advertisers do not necessarily reflect the view of the management and staff of the North Shore News. All rights reserved. Reproduction in whole or part without permission is prohibited. © 2012.

**PUBLISHER/EDITOR**  
RON VALENCIANA

**TYPOGRAPHY**  
DOWNTOWN GENERAL STORE  
**BOOKKEEPING & CLASSIFIEDS**  
LINDA SEYLER

**CONTRIBUTING WRITERS**  
RON VALENCIANA,  
NATY HOPEWELL  
STATE SENATOR DONOVAN DELA CRUZ  
CITY COUNCILMAN ERNIE MARTIN  
STATE REPRESENTATIVE GIL RIVIERE

**For Advertising Rates,  
call  
637-3138**

# CLASSIFIEDS

♥♥Need a minister for a North Shore wedding? Hundreds of knots tied for happy couples on Oahu. Simple beach-side ceremonies to formal church or chapel services. I'll make your special day an extraordinary memory. Call & leave clear message with phone number & possible date, time & place. 342-3969. Also: Vow renewals, house blessings, baby luaus.

**PAUMALU ELECTRIC**  
David C. Hancock  
638-9054 / Lic#C18074

**SHORE ELECTRICAL SERVICE**  
New Const-Remodels  
638-0049 / Lic#C20777

LGR Construction  
Remodel • Repair • Design  
Drafting • Painting • Small Jobs  
Affordable rates. 343-4453/Lic#26759

**Dog/Cat Nail Trimming**  
at your home only \$15.00  
Call Julie 637-5395

**Aloha Computer**  
PC Repair/Virus Removal  
Fax/Copy/Internet Access  
372-2667 or 237-4558

**Lawn Care For You**  
Mowing, Trimming, Light Hedging  
Call Thomas 637-5839

**Ross McGerty BC24080**  
349-6359 • 637-9539  
From Waiialua to Sunset  
**Make Me the First Call  
for Home or Rental Repairs  
or Renovations**

**EXPERT ELECTRICIAN**  
Fans, emergency services, etc.  
Jim Richards 371-9369

**PARADISE PLUMBING INC.**  
New Const • Repairs • Remodels  
808-368-1473 / Lic. 29856

**BEACH PLUMBING & ROOTER**  
Over 30 years experience  
Call Larry 637-6400

**Handyman Services**  
Remodeling, Carpentry, Floors,  
Concrete, all parts of Construction  
Call Bob "The nicest guy in the  
business" Ph. 282-2812

**Haugan Construction LLC**  
Build & Repair • Big & Small  
Let's Talk  
Steve 542-9269

Nutrition Expertise  
Cooking advice & demos  
Whole foods nutritionist  
Crystal Bossola 954-9495

**BOW WOW BUNGALOWS**  
Licensed Boarding Kennel  
North Shore, Oahu  
Reasonable Rates  
Ph. 637-2562  
**These Dogs Have Fun!**

**HARVEY'S REPAIR, LLC**  
24 hrs Towing Service  
Specializing in opening  
locked car doors  
Call any time 478-0333

English and Reading Tutoring.  
Private tutoring for youth or  
adults by highly-qualified  
English & Reading Instructor.  
Call: 778-7711 or  
email: zitzb001@hawaii.rr.com

**GERMAN CAR SERVICE**  
Professional-Qualified  
Technician  
Call Gary  
637-6800

**Next Issue - July 11, 2012**  
**Deadline Date-June 28, 2012**

**BIKRAM YOGA**  
See our new studio, anti-  
microbial, anti-bacterial  
carpet and more!  
Please call for class schedule  
**637-5700**

**North Shore Pumping**  
Cesspool & Septic Pumping  
Complete Plumbing  
Services, new & repairs  
Lic. & insured #25567  
638-0900 • 291-5089

N.S. Property Maintenance  
Power wash, painting int/ext,  
deck repairs, extensions,  
fences, gates,  
carpentry & remodels.  
Maintenance, lawn & yard.  
Chris 381-5213/638-0659

**SHIATSU • LOMI**  
Aromatherapy  
Milica Barjaktarovic  
Lic # MAT8348  
351-0848  
HumanRemodeling.com

**WINDOW CLEANING**  
Expert - 30 plus years  
experience.  
Also pressure wash.  
Jack Wheeler  
594-3339

**LEARN TO SWIM**  
AT THE  
**HAWAII SWIM  
SCHOOL**  
ON THE NORTH SHORE  
Developing swimmers since 1982  
Haleiwa Rd. at Smiley Place  
637-4863

**SUBSCRIPTION RATES**

If you live outside the North Shore area on Oahu, neighbor islands, or the mainland, you can subscribe to the North Shore News. Our annual subscription rate is \$35 for 25 issues delivered by standard bulk mail (2-3 weeks), or \$55 for 25 issues delivered by first class postage (3-5 days). Call our office for payment information at (808) 637-3138.

**HOW TO CONTACT THE NORTH SHORE NEWS**

Letters to the Editor, and other items submitted for publication consideration may be sent to us via:

MAIL: P.O. Box 1117, Haleiwa, HI 96712

E-MAIL: NShoreNews@aol.com

FAX: (808) 637-8862

PHONE: (808) 637-3138

# CLASSIFIED ADS

[hawaiiweddingminister.com](http://hawaiiweddingminister.com)

342-3969

31 years experience

## Offshore Plumbing, Inc.

Commercial • Residential  
• Septic • Solar • Design

Mike 630-1407

Steve 371-3451

Lic #C28113

Fax 638-9022

[offshoreplumbing@yahoo.com](mailto:offshoreplumbing@yahoo.com)

## BOBBY'S BODIES

Tuesday evenings at 5:00 p.m.

• Body Toning

Friday mornings at 9:00 a.m.

• Cardio Pump/Fat Burner

For more info: call Bobby, owner of BOBBY'S BODIES at 637-4150

## Lisa Carley Skin Care

637-9400

[lisacarley.com](http://lisacarley.com)

67-292 Goodale Ave. #104

Waiialua Shopping Center

## ANGELS PLUMBING

Repairs  
Remodeling  
Renovation

638-7878

Lic. #C12004



## THE LAWN RANGER

Lawn Maintenance

no yard too hard

no lawn too far gone

We mow betta

258-6439 Dan Fatchett

Marianne  
Abrigo, Properties

Specializing in -  
North Shore  
Real Estate

Ask for our list of avail-  
able properties and/or a  
free market analysis.

Marianne M. Abrigo

"Realtor since 1974"

Office

637-3511

Fax

637-0777

Email

[mabrigo222@aol.com](mailto:mabrigo222@aol.com)

## PAINTING

INTERIOR, EXTERIOR

FREE ESTIMATES

OAHU PRECISION PAINTING

LIC #31602

SKIP WUNDERLICH 220-9083

**Golf Instruction. Private  
or group lessons avail-  
able for youth and adults.**

**Call: 478-3466 or email:**

**[kwz711@hawaii.rr.com](mailto:kwz711@hawaii.rr.com)**

## HELP WANTED

### BUSSERS/SERVERS

Pizza Bob's in Haleiwa is looking

for BUSSERS/SERVERS. Experience

preferred. Apply in person

at 66-145 Kam. Hwy.

### COOKS/KITCHEN HELP

Pizza Bob's in Haleiwa is looking

for kitchen personnel. Experience

preferred, but will consider

training the right people. Apply

in person at 66-145 Kam. Hwy.

### On-Call Food Service Worker

YMCA Camp H.R. Erdman

Apply in person or @

[Ymcahonolulu.org](http://Ymcahonolulu.org)

No phone calls please

Farm seeking responsible

hard working individuals. Work

included but not limited to

harvest, prune, clean & prep

w/ flexible hours. Leave a mes-

sage. **Call 707-200-1375**

Front counter sales/light

prep at Pupukea Grill

located at Shark's Cove.

Please drop off resume

during business hours.

Thurs-Tues 11am-5pm.

No phone calls please.

### Retail Sales

### Surf & Sea

Hawaii's Ocean Sports Headquarters

is always looking for hard working,

energetic people to become a part

of our sales team. Good pay, bonus,

benefits. Ocean sports experience

and/or bilingual a plus. Apply in

person daily 9am-7pm

62-595 Kam. Hwy., Haleiwa

### Job Opening at Kahuku High and Intermediate School...

We are looking for a Family In-  
volvee for the 2012-2013 school  
year. This person will work 19  
hours a week at the pay rate of  
\$13.34 per hour. A Family In-  
volvee provides opportunities for  
our families to become involved  
and informed members of our  
school community. Some of the  
duties include coordinating parent  
meetings, taking school ID  
pictures, managing the marquee  
information, coordinating vol-  
unteers, updating and maintain-  
ing main office bulletin boards,  
preparing the School Community  
Council's agenda, keeping min-  
utes and coordinating refresh-  
ments. Please send your resume  
to Kahuku High & Intermediate  
attn: Annette Ostrem 56-490  
Kamehameha Highway, Kahuku  
96731. The deadline for accept-  
ing applications is July 15, 2012.

### Keep it Country To report ILLEGAL VACATION RENTALS

call 768-8159 or 768-8118

You will remain anonymous

**Illegal Vacation Rentals**

**are ruining the North Shore**

[www.savenorthshoreneighborhoods.com](http://www.savenorthshoreneighborhoods.com)

### Business Services Center

Fast & convenient fax, copy,

scan, computer/internet,

laminare, etc.

Across from Haleiwa post office.

North Shore Chamber of Commerce

637-4558 or 342-8557

### BEGIN WATERCOLOR

Jay Marr Art Gallery-Waiialua

Tues. Evenings 6:30-8:30

\$30/class includes all supplies

(go home with a painting!)

call 637-2562 for details

### OFF da ISLAND

Are you leaving Oahu on vacation or  
business? Do you live on a neighbor  
island, the mainland or foreign  
country and subscribe to the North  
Shore News? Try send us a photo of  
someone in front of a sign or land-  
mark holding a copy of the NSN.  
Email your photo along with the  
person or persons' name, community  
of residence, telephone number and  
photo location to: [NShoreNews@  
aol.com](mailto:NShoreNews@aol.com). Or, mail to OFF da ISLAND  
Photo, North Shore News, P.O. Box  
1117, Hale'iwa, HI 96712. We can-  
not return photos so please send us  
a copy. Photos received become the  
property of NSN. Preference and pri-  
ority will be given to emailed photos.

## FOR SALE

Like new 88 - Key Hammer  
Action Premium Stage Piano  
by M-AUDIO. Includes carrying  
case with wheels, stand, sustain  
pedal, AC plug, user guide (un-  
opened) and CD software. Paid  
new at Easy Music for \$1000,  
asking \$500 firm. Used 2X. Call  
342-3969 from 8am to 10pm.

## MISCELLANEOUS

### Waikiki Hot Yoga

5th Fl. Miramar Hotel

Call for info: 277-9935

[www.waikikihotyoga.com](http://www.waikikihotyoga.com)

### BEACH CLEAN UP

Chun's Reef - 10 a.m.

637-2211

Last Saturday of every month

[adoptabeachhawaii.org](http://adoptabeachhawaii.org)

## REUNIONS

The NSN is happy to publish

your school or family reunion

Free of charge.

Email your announcement to

[NShoreNews@aol.com](mailto:NShoreNews@aol.com).

### FREE Senior Citizen Art Class

Jay Marr Art Gallery-Waiialua

Last Tues. of the month

10 a.m. - 12 noon

supplies included - space limited

call 637-2562

### North Shore Farmers Markets

Haleiwa: 9 a.m. to 1 p.m. Sundays, at  
traffic signal on the old Kamehameha  
Hwy at the bypass road.

Waiialua Sugar Mill: 8:30 a.m. to noon  
Saturdays & Wednesdays 4:40 p.m.  
to 7:00 p.m.

North Shore Country Market: 8 a.m. to  
2 p.m. Saturdays, Sunset Beach Eleme-  
ntary School, 59-360 Kamehameha Hwy.

Laie: 11 a.m. to 2 p.m. June 24, July  
8 and 23, Brigham-Young University-  
Hawaii, 55-220 Kulanui St.

# SUBSCRIBE to North Shore News 3 choices...

### SNAIL MAIL

\$35

25 issues  
1 year

Standard Bulk Mail  
2-3 week delivery time

### FIRST CLASS

\$55

25 issues  
1 year

Inside Envelope  
3-5 day delivery time

### EMAIL

\$25 limited introductory price

25 issues  
1 year

PDF file cover to cover  
Emailed 3 days prior to  
publication date

10,000 North Shore residents receive the NSN free every other Wednesday by direct mail. All others on Oahu, Neighbor Islands, Mainland US & Canada must SUBSCRIBE using either of the choices above. Price includes tax & handling. You may subscribe by using check, money order, or credit card (VISA, MC, AMX). Mail payment along with mailing/email address to: North Shore News, PO Box 117, Haleiwa, HI 96712. Payment by credit card include number & expiration date. (808) 637-3138 NShoreNews@aol.com

## COMMUNITY CLASSIFIED ADS

Heading: (circle) For Sale - Rentals - Services - Lost/Found - Help Wanted - Misc.

Issue Date: \_\_\_\_\_

Name: \_\_\_\_\_

Contact No.: \_\_\_\_\_

Non-business ads - \$4.00 per line, no minimum

Business ads including services - \$6.00 per line, minimum 3 lines

Lost/Found ads - no charge up to 3 lines

Box ads - \$40.00 per column inch

ADS CAN BE DROPPED OFF IN MAIL SLOT, MAILED, FAXED OR EMAILED (NShorenews@aol.com) TO NORTH SHORE NEWS. DEAD- LINES ARE THE FRIDAY AFTER OUR PREVIOUS ISSUE (THURSDAY IF FRIDAY IS A HOLIDAY). MAKE CHECKS PAYABLE TO: NORTH SHORE NEWS, PHONE ORDERS WITH CREDIT CARDS ONLY.

Print your ad clearly in the space below by using proper spacing and punctuation. We reserve the right to refuse any advertisement with full refund.

Non-Business Personal Ad  
\$4.00 per line • No minimum  
Includes tax.

Business Ad  
\$6.00 per line (min. 3 lines)  
Includes tax.

\$4.18														
8.37														
12.56														\$18.89
16.75														25.13
24.94														32.45
25.13														39.79

North Shore News P.O. Box 1117 Haleiwa, HI 96712  
Ph: (808) 637-3138 • Fax: (808) 637-8862

**HAPPY  
4TH OF  
JULY!**



MALAMA MARKET HALEIWA:  
OPEN DAILY 7 AM-9 PM  
808.637.4520

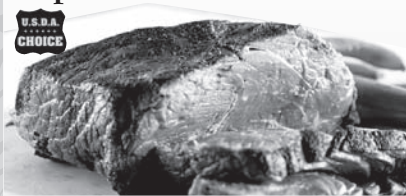
MALAMA MARKET MAKAKILO:  
OPEN DAILY 6 AM-10 PM  
808.672.9955

Valid Dates:  
6/27/12-7/3/12

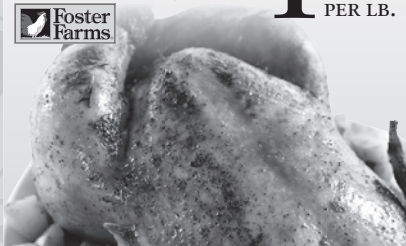
Castle Rock  
Red Seedless  
Grapes **\$1.99**  
PER LB.



choice Certified  
Angus Beef®  
Boneless  
Top Sirloin Steak **\$5.99**  
PER LB.



Fresh Whole  
Chicken Fryer **\$1.89**  
PER LB.



Coca-Cola or  
Pepsi **4/\$14**  
Selected Varieties,  
12/12 oz.



Nissin  
Top Ramen **\$5.99**  
Selected Varieties,  
24/3 oz.,  
Case Sale Only



Lay's Potato Chips or  
Nabisco Chips Ahoy! **2/\$5**  
Cookies or Ritz Crackers



DiGiorno  
Rising Crust or  
California Pizza Kitchen  
Thin Crust Pizza **2/\$12**



Häagen-Dazs  
Ice Cream **2/\$6**  
Selected Varieties,  
14 oz.



Best Yet Foam Plates  
or Scott Napkins **2/\$5**  
Selected Varieties,  
50-400 ct.



Aquafina Water **\$3.99**  
24/500 ml. or Arizona Tea  
Selected Varieties,  
Gal.



Fresh Baked **\$3.99**  
Country Cookies EACH



8 Piece  
Fried Chicken **\$8.99**  
EACH

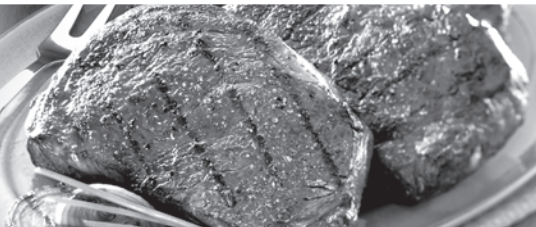


Budweiser,  
Bud Light, Coors,  
Coors Light, or  
Miller Lite **\$21.99**  
30 Pk. Cans



**THURSDAY**

INCLUDES:  
**7-8 oz. Steak**  
Rice • Tossed Salad • Drink



**Grilled Steak  
LUNCH  
\$6.99**

Hawaii Beverage Fee of 1¢ per can or bottle will be added to purchase price of alcoholic. An Additional Hawaii Deposit fee of 5¢ will be charged for all specially marked beverage containers.

Limit five units (mix/match) per purchase, unless otherwise specified. We reserve the right to limit quantities. No sales to dealers. Prices plus applicable state tax. Hawaii EBT cards welcomed.