



**“E Ala Na Moku Kai Liloloa”**

**Protecting Native Habitat**

Proof-fence erected at Kaena Point provides a safe habitat for native plant and animal life. See story beginning on page 6.



NORTH SHORE NEWS May 4, 2011 VOLUME 28, NUMBER 9



**Flames rage at 19th annual PCC Fireknife Championships**

The Polynesian Cultural Center will host the annual world fireknife championships during the “We Are Samoa” week May 11-14, 2011.

Acrobatic moves and death-defying tricks combine with ancient Samoan culture to make this event an exhilarating must-see as the world’s most talented fireknife dancers battle for the title of “World Fireknife Champion.”

Pictured here is last year’s champion Mikaele Ola. (Photo courtesy of Polynesian Cultural Center).

For more information turn to page 9.

PRE-SORTED  
STANDARD  
U.S. POSTAGE PAID  
Honolulu, Hawaii  
Permit No. 1479

66-437 Kamehameha Hwy., Suite 210  
Hale'iwa, HI 96712

PROUDLY PUBLISHED IN  
**Hale'iwa, Hawai'i**  
Hometown of  
Miss Hawaii  
**Jalee Kate Fuselier**



## OFF da Island in Egypt

Hale'iwa residents Claudia and son Kent Kravitz are shown here on a recent side-trip to Cairo, Egypt with two ancient pyramids in the background. They traveled to the Middle East to visit a relative working in Kuwait and made time for a short visit to the Cairo Museum. They packed a recent copy of the NSN to remind them of all the good times back on Oahu's beautiful North Shore. For more info on our OFF da Island photo campaign turn to page 23.



**Free Family Movie Night  
at Waialua Community  
Association**



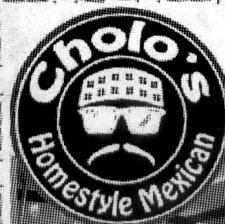
**Treasure  
Planet**

Fun for the whole family!  
**Friday, May 20 at 7 p.m.**  
**FREE ADMISSION**

Drinks & Popcorn for sale



For more information, call 637-4606



**Cholo's Homestyle  
Mexican Restaurant  
& Margarita Bar**



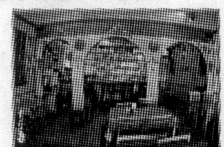
**Island Fresh Fish Tacos**

**Dine-In  
Take-Out**

Burritos • Quesadillas • Nachos  
Enchiladas • Fajitas

**637-3059**

OPEN EVERY DAY  
10:30 a.m.-9:30 p.m.



**"Hawaii's Best Little  
Mexican Restaurant"**

All Major Credit Cards Accepted

Located in the North Shore Marketplace  
66250 Kamehameha Highway Haleiwa, Hawaii 96712

Treat her to an elegant Mother's Day Brunch she will remember!



**Hau`oli La Makuahine!**  
*Happy Mother's Day*



Sunday, May 8th in the panoramic Kuilima Ballroom

## Mother's Day Brunch

In the Kuilima Ballroom with Live Entertainment by the Ka'ala Boys  
*Seatings at 10am, 10:30am, 12:30pm and 1:00pm*

### hot selections

- Carved to Order, Roast Prime Rib
- Poached Eggs with Crab Hash
- Basil Linguine
- Five Spice Pork Tenderloin

### action stations

- Belgian Waffles with Toppings Station
- Eggs & Omelet Station
- Teppanyaki Station
- Veggie & Vegan Stir Fry Stations

### sides, salads, & display highlights

- Marinated Grilled Vegetable Platter
- Crispy Spinich & Warm Bacon Vinaigrette
- Caprese, Tabouleh, & Roasted Asian Duck Salads
- Caesar Salad with Grilled Chicken or Blackened Ahi

### soup

- Haula Tomato Bisque

### seafood

- Tako & Ahi Poke
- Marinated Mussels
- Grilled Calamari Steak Salad

### dessert highlights

- Banana's Foster Station,
- Apple Mango Galette
- Meyer Lemon Tarts
- Coconut Almond Honey Cakes

**\$42 Adults and \$21 Children ages 4-11**

15% service charge and 4.712 tax will be added to the final bill.  
Reservations must be guaranteed and tickets are non-refundable.

**TO PURCHASE BRUNCH TICKETS CALL 293-6053**

## The Hale'iwa Family Dental Center, Ltd.



presents

### "Comfort Dentistry"

including—

- Relaxation Glasses
- Television Glasses
- Caring Staff
- Special Medication to help you relax
- Laser Cavity Detection
- New Patients Welcome!

Your teeth are much too important to neglect.

**Call: 637-9652**  
for your reservation

We're conveniently located behind First Hawaiian Bank  
in the heart of Hale'iwa.

## Saccoccio & Lopez

ATTORNEYS AT LAW  
Serving Hale'iwa since 1984

*Bankruptcy*  
*Personal Injury • Criminal Law*  
*Landlord/Tenant*  
*Traffic Offenses • DUI*

**Family Law**  
*Adoption • Custody • Divorce*  
*Paternity • Guardianship*  
*Deeds, and Wills*

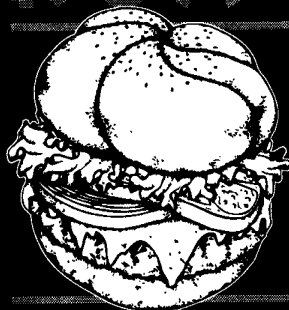
**637-7611**

VISA/MC Accepted  
Above the Hale'iwa Post Office



Paul & Nita

# KUA'AINA



*The Best!*

IN HALEIWA  
**637-6067**

NOW IN HONOLULU  
**591-9133**  
AT WARD VILLAGE SHOPS

HALEIWA • TOKYO • HONOLULU

## Editor's Choice

### "Useful Information"

(Author Unknown)

In the 1400's a law was set forth in England that a man was allowed to beat his wife with a stick no thicker than his thumb. Hence we have 'the rule of thumb'.

The first couple to be shown in bed together on prime time TV was Fred and Wilma Flintstone.

Men can read smaller print than women can; women can hear better.

Coca-Cola was originally green.

It is impossible to lick your elbow.

The State with the highest percentage of people who walk to work: Alaska.

The cost of raising a medium-size dog to the age of eleven: \$ 16,400 .

The average number of people airborne over the U.S. in any given hour: 61,000.

The first novel ever written on a typewriter, Tom Sawyer.

The San Francisco Cable cars are the only mobile National Monuments.

Each king in a deck of playing cards represents a great king from history: Spades - King David, Hearts - Charlemagne, Clubs -Alexander, the Great, Diamonds - Julius Caesar.

Q. If you were to spell out numbers, how far would you have to go until you would find the letter 'A'? A. One thousand.

Q. What do bulletproof vests, fire escapes, wind-shield wipers and laser printers have in common? A. All were invented by women.

Q. Which day are there more collect calls than any other day of the year? A. Father's Day.

In Shakespeare's time, mattresses were secured on bed frames by ropes. When you pulled on the ropes, the mattress tightened, making the bed firmer to sleep on. Hence the phrase...'Goodnight , sleep tight'.

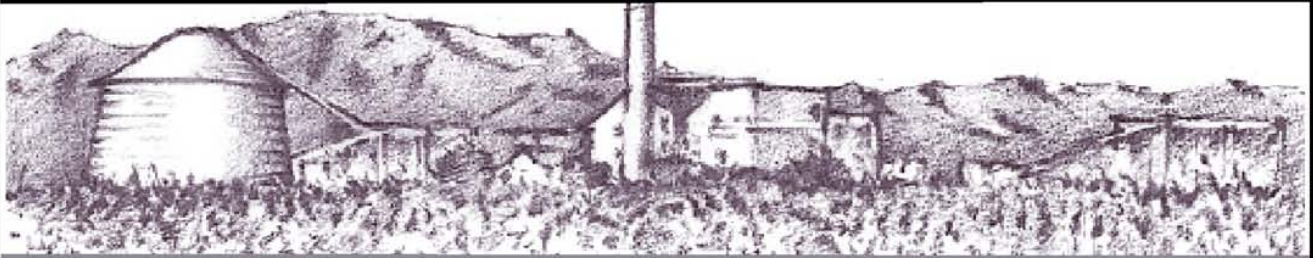
It was the accepted practice in Babylon 4,000 years ago that for a month after the wedding, the bride's father would supply his son-in-law with all the mead he could drink. Mead is a honey beer and because their calendar was lunar based, this period was called the honey month, which we know today as the honeymoon.

In English pubs, ale is ordered by pints and quarts... So in old England , when customers got unruly, the bartender would yell at them 'Mind your pints and quarts, and settle down.' It's where we get the phrase 'mind your P's and Q's'.

Many years ago in England , pub frequenters had a whistle baked into the rim, or handle, of their ceramic cups. When they needed a refill, they used the whistle to get some service. 'Wet your whistle' is the phrase inspired by this practice.

At least 75% of people who read this will try to lick their elbow!

# WAIALUA FEDERAL CREDIT UNION



**4.50% APR**  
**NEW AUTO LOANS**  
 Up to 100% Sales Contract  
 New Previously Untitled  
 Maximum Terms 6 years  
 7 Years on Loans  
 over \$25,000

**3.75% APR**  
until March 10, 2012  
**HOME EQUITY LINES OF CREDIT**  
 Owner Occupant  
**Maximum Line: \$150,000**  
 Variable adjusted annually on March 10  
(3.5% above the average 26 week Treasury Bill rate)  
 Call for more information

67-292 Goodale Ave. Waialua, HI 96791 808-637-5980



**wanna learn?**  
**NORTH SHORE**  
**JIU-JITSU CLUB**  
**try it out free!**  
**men-women-kids**  
**NorthShoreBJJ@GMail.com**

## SOMEWHERE IN CYBERSPACE...



NSURF808 >> GET SNOW IN WAIALUA O WAT???  
 LOCALHI >> WE GET!  
 NSURF808 >> NO CAN, STAY TOO HOT FO SNOW  
 LOCALHI >> BRAH, JUS GOTTA GO PKB  
 NSURF808 >> PKB THE BAKERY?  
 LOCALHI >> YEA YEA, GO TRY DA SNOW PUFFY  
 NSURF808 >> WAT?  
 LOCALHI >> YEA, DES MY FAVORITE GRINDS OVER  
 DEA. COLD CREAMY 'N ONO!  
 NSURF808 >> K, I GOING TRY DAT WEN WE GO SUNSET BEACH

**LEARN ABOUT OUR SNOW PUFFIES!**  
**VISIT US AT WWW.PKBSWEETS.COM**

**SNOW PUFFY** 

**POWDERED SUGAR**

**COLD CREAMY CUSTARD INSIDE!**

**DELICIOUS FLAKY CRUST**

**CHOCOLATE FUDGE**



### SIX SPECIAL NIGHTS

**MONDAY**  
**\$2.50 BEER**  
 BOTTLES & DRAFT

**TUESDAY**  
**\$5.00 OFF PIZZA**  
 REGULAR OR LARGE

**WEDNESDAY**  
**SALAD NIGHT**  
 1/2 OFF SALADS

**THURSDAY**  
**\$3.50 NIGHT**  
 \$3.50 SLICES,  
 SALADS, MAI TAI'S,  
 WINE & BEER



**SATURDAY**  
**\$4.50 NIGHT**  
 \$4.50 SLICES,  
 SALADS, MAI TAI'S,  
 WINE & BEER (or less)

**FRIDAY NIGHT \$5.95 BURGER & FRIES**

Dine In Only - 4:00 PM Until Closing - Haleiwa Shopping Plaza - 637-5095

**PLUS \$2.00 Off with this Coupon**

Some Restrictions Apply. See Restaurant for Details.  
 When Ordering Regular Priced Items. Good Anytime. One Coupon Per Person.  
 Can Not Be Combined with Other Discounts. Expires 07/31/2011.

# First predator proof fence in Hawaii completed at Ka`ena Point

The Department of Land and Natural Resources (DLNR) has completed construction of the first predator-proof fence in the Hawaiian Islands at the Ka'ena Point Natural Area Reserve, a wilderness area at the northwestern tip of O'ahu that DLNR manages as a natural area reserve and state park. Spanning 700 yards, and enclosing over 59 acres, it provides a safe habitat for native plant and animal life.

"Protection of the natural and cultural resources of Ka'ena Point has been an ongoing effort of DLNR. Completion of the predator-proof fence is a significant step as we continue to care for the natural resources there, in partnership with wildlife agencies such as the Hawai'i Chapter of the Wildlife Society, the U.S. Fish and Wildlife Service – which provided the bulk of funding through its coastal program -- and the community," said William J. Aila, DLNR Chairperson.

"We will continue to work with the Ka'ena Point Advisory Group and others on an integrated manage-



ment plan and education effort to protect, preserve, and restore the native environment of Ka'ena," he said. "We appreciate the community's respecting the disassembled boulder barricade while the fence was under construction. The protective barricade has since been rebuilt in place."

"The U.S. Fish and Wildlife Service is excited to have provided funding for this unique project which seeks to restore and maintain the environmental in-

*Continued on page 14*



**Glennel Warren, MBA**  
Financial Advisor  
P 808.218.2633



**Elsa Agdinaoay**  
Financial Specialist  
P 808.927.2094  
677 Ala Moana Blvd, Suite 705, Honolulu, HI 96813 | office 808.695.2123  
toll free 866.252.7270 | fax 808.695.2121

*Wealth Management*

*Business Succession Plans*

*Educational Plans*

*Life Insurance*

*Long Term Care Planning*

*Disability Insurance*



**WEALTH STRATEGY PARTNERS**  
PROTECT • INVEST • ACHIEVE



**Official Sponsor**

Registered Representatives of Park Avenue Securities LLC (PAS) 7 Hanover Square, New York, NY, 10004. Securities products and services are offered through PAS, a registered investment advisor and broker/dealer. Financial Representative, The Guardian Life Insurance Company of America (Guardian), New York, NY. PAS is an indirect wholly owned subsidiary of Guardian. Wealth Strategy Partners is not an affiliate or subsidiary of PAS or Guardian. PAS is a member FINRA, SIPC GEAR 2010-7106



**PUT A CAP ON SKIN CANCER!**  
MAY IS NATIONAL SKIN CANCER AWARENESS MONTH

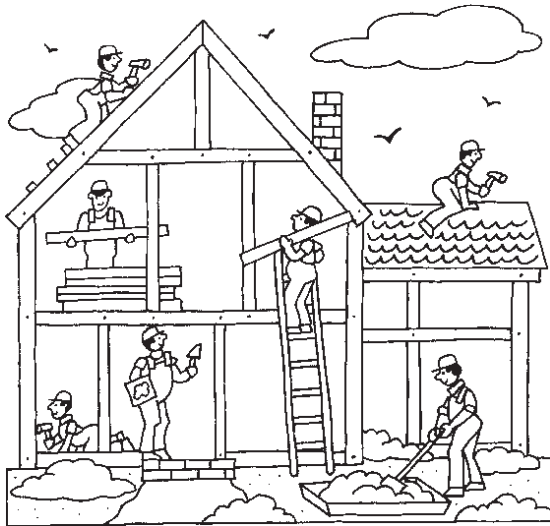
**FREE XCEL CAP**  
WITH \$40 XCEL UV PERFORMANCE GEAR PURCHASE

**MAY 1 THRU 31**

**PLUS 15% OFF**  
All Regular-Price Xcel Merchandise!

**Xcel Haleiwa Retail Outlet ONLY**  
66-590 Kam Hwy., Haleiwa  
Phone: 637-3248  
[XCELWETSUITS.COM](http://XCELWETSUITS.COM)

WHILE SUPPLIES LAST • LIMIT 1 FREE XCEL CAP PER CUSTOMER • \$40.00 MINIMUM PURCHASE BEFORE TAX



# Attention!

- Contractors • Plumbers • Masons
- Electricians • Painters • Banks •
- Carpenters • Roofers • Landscapers
- Locksmiths • Lawncare-Gardening •
- Pool Builders • Maintenance
- Hardware Stores • Yard Service •
- Tree Trimmers • Housecleaners

**PUBLICATION DATE:**

**June 29, 2011**

**DEADLINE: June 16, 2011**

Don't miss our annual

## HOME IMPROVEMENT EDITION

Advertising Deadline is Thursday, June 16, 2011

**Call today for the best prices and page location**

Advertising in the North Shore News puts your ad into 10,000 homes by direct mail. 14,000 total copies printed.

# 342-3969

## Quality Tile Crafts

"No job too big or small!"

Specializing in Ceramic Tile,  
Travertine, Marble, & Slate

Kevin Wilson

cell (808) 864-4985 office (808) 638-8492

www.QualityTileCrafts.com Free Est.



## PKB Mother's Day Special

You're sure to find the perfect Mother's Day "sweet gift" at Paalaa Kai Bakery!

PRE-ORDER one of our delicious decorated MOTHER'S DAY CAKES

# 15% OFF!

Be sure to place your order by May 6th

LIMIT: One discounted cake per person.  
Not valid with other promotions.  
Orders must be placed by May 6, 2011 to receive discount.



## Polynesian Treasures

Hawaii's largest selection of Polynesian handicrafts and Hawaiian inspired gifts.

North Shore Marketplace • Haleiwa, Hawaii  
Open daily from 10 a.m. • 808-637-1288



**CALL PKB**  
**637-9795**



# TALK STORY 3

THE LATEST IN A SERIES OF COMMUNITY FORUMS

Regarding the Future of

## Turtle Bay

Sunset Beach Elementary School Cafeteria

Wednesday, May 11, 2011

7:00 pm - 9:30 pm

### SCHEDULE

- 7:00 - 7:20 Welcome by Moderator Dee Dee Letts  
Pule by Rev. Bob Nakata - Format and  
Introductions of Speakers and Invited Guests
- 7:20 - 7:30 Short Film History of Turtle Bay Resort
- 7:30 - 8:00 Speakers' Update on Current Situation  
at Turtle Bay and Vision for the Future
- 8:00 - 9:30 Talk Story - Community Alternatives to  
Resort Development / Q and A

### SPEAKERS

- Governor Neil Abercrombie
- Cathleen Mattoon - Turtle Bay Advisory Working Group
- Tim Vandever - Ko'olauloa North Shore Alliance
- Drew Stotesbury - Turtle Bay Owners' Representative,  
Replay Resorts
- Lee Sichter - SEIS Consultant, Lee Sichter LLC

Hosted by Ko'olauloa North Shore Alliance  
Refreshments will be provided  
For more information go to - [www.KNSAlliance.org](http://www.KNSAlliance.org)

### SUPPORTERS

The following organizations support the  
initiative to preserve Turtle Bay:

- Beach Access Hawai'i
- Defend Oahu Coalition
- Friends of Kewalo Basin
- Hawai'i State Bodsurfing Association
- Hawai'i's Thousand Friends
- Mālama Pūpūkea Waimea
- Hui o He'e Nalu
- 'Ilio'ulaokalani Coalition
- KAHEA
- Keep Kahuku Country
- Keep the Country Country, Inc.
- Keep the North Shore Country
- Ko'olauloa Hawaiian Civic Club
- Livable Hawai'i Kai Hui
- Mokulē'ia Community Association
- North Shore Community Land Trust
- Save Waimea Valley Coalition
- Sierra Club, Hawai'i Chapter
- Sunset Beach Community Association
- Surfrider Foundation, O'ahu Chapter
- The Trust for Public Land
- Wai'āhole - Waikāne Community Association



**YOU DON'T JUST WIN GOLD.  
YOU FORGE IT.**

19th Annual **WORLD  
FIREKNIFE**  
Championships  
MAY 11-14, 2011

We have a history of bravery. For tickets, call 293-3333. Annual pass holders get in free with a reservation.

**POLYNESIAN  
CULTURAL CENTER**

SHIRLEY, MATAALI AND THE LATE TAUULILI HENRY'S MATAALI  
HAWAIIAN BIBLINES  
EDWARD ENTERPRISES, INC. (PAST PRODUCE MANAGEMENT / TOURISM)  
Turtle Bay Resort  
Bank of Hawaii  
HAWAII TOURISM AUTHORITY  
pepsi

## Competition ignites at the Polynesian Cultural Center's 19th Annual World Fireknife Championships

### High School Samoan Cultural Arts Festival Also Shares Samoan Culture

**What:** We Are Samoa Festival, which includes the 19th Annual World Fireknife Championship and Samoan High School Arts Festival.

#### 19th Annual World Fireknife Championship

Acrobatic moves and death-defying tricks combine with ancient Samoan culture to make this event an exhilarating must-see as the world's most talented fireknife dancers battle for the title of "World Fireknife Champion."

#### Samoan High School Arts Festival

Hawaii high school students will demonstrate their own cultural knowledge of Samoan traditions with exhibitions in basket weaving, coconut husking and fire making, among other events.

#### When: May 11-14, 2011

- Wednesday, May 11–7:45 p.m. (Hale Aloha)
- Preliminary Competition
- Thursday, May 12–7:45 p.m. (Hale Aloha)
- Junior Pacific Division
- Semi-Finals
- Open Group Competition
- Friday, May 13–7:30 p.m. (Pacific Theater)
- Finals Night One (during intermission of Ha: Breath of Life night show)
- Saturday, May 14 (Pacific Theater)
- 9 a.m.–2 p.m.–Samoan High School Arts Festival
- 7:30 p.m.–Finals Night Two and Crowning (during intermission of Ha: Breath of Life night show, awards at 9 p.m.)

#### Where: Polynesian Cultural Center

55-370 Kamehameha Hwy., La'ie, Hawai'i

**Why:** To share and educate others about the Samoan culture and challenging art of Samoan Fireknife while also crowning the world's best fireknife dancer.

**Admission:** Tickets are \$10 for adults, ages 12 and up, and \$6 for keiki ages five to 11. Kamaaina Annual Pass holders and full-day ticket holders receive free admission for the first two nights as well as the Samoan Cultural High School Arts Festival on Saturday.

To join in on the final two nights of festivities, visitors must purchase a reserved seating ticket to the Ha: Breath of Life night show each evening. Ticket prices start at \$45.

For more information or to make reservations, please call the Polynesian Cultural Center ticket office at (800) 367-7060 or visit [www.polynesia.com](http://www.polynesia.com). In Hawaii, call (808) 293-3333.

Laie, HI – The Polynesian Cultural Center's (PCC) 19th Annual World Fireknife Championships will be held over the course of four days this year, from May 11 to 14. The world's most talented fireknife dancers will come together at the PCC to amaze the audience and once again turn up the heat as they battle to see who will be crowned this year's World Fireknife Champion. Dancers of all ages will tempt fate as they try to avoid the dangerous fireknives in a competition of skill and bravery. Acrobatic moves, death-defying stunts, rhythmic dancing and fireknives combine to make this a must see event.



**Councilman**  
**Ernie Martin**  
**Serving You in District 2**

Intense budget deliberations continue at City Hall. Of particular interest to residents of the North Shore is the amount of money being allotted for capital improvement construction projects. Bill 14 relates to the Mayor's Capital Budget and Program for Fiscal Year 2012. The Council is now in the process of amending the Mayor's original proposal to ensure that the allocations reflect the priorities of the City Council as well. As I reported earlier, there are many incomplete projects in District 2 that have been pending for years and these projects are my first priority for funding in 2012. One such project is the Banzai Skate Park. Nearly \$66,000 was appropriated in 2010 for landscaping and erosion control. Working closely with Parks Director Gary Cabato to get the ball rolling, I am pleased to report that the work finally began on April 6th and is scheduled to be completed in July. The next phase will include the installation of skate street bowl elements, a parking lot and permanent landscaping improvements. Although no construction funds were allocated for 2011, bid documents will be completed this summer and will be sent out once construction funds are available. I have included the estimated \$1.3 million in construction funds in the 2012 budget now under consideration. Although compromises often happen in budget deliberations, I will do everything I can to ensure that the entire amount is included in the final budget approved by the Council. In an extraordinary show of support for the project, the Sunset Beach Community Association has established a special fund to support the completion of the project. The first deposit was a \$100 contribution made on March



*Long time Banzai Skate Board Park advocate Rex Dubiel presents the first \$100 to the Sunset Beach Community Association Skate Board Park Fund to President Jeanne Martinson (center) and Councilman Ernie Martin.*

30th by Rex Dubiel, a Sunset Beach resident who has been an advocate of the skateboard park for many years. Other donations are sure to be forthcoming. This will serve as a strong indication to the Department of Parks and Recreation that the community is serious about helping to complete this project in a way that will maximize the use and enjoyment of the park by skaters of all ages. It will be an important recreational facility for the entire community. Many area residents like Rex Dubiel have been waiting for years to see this park completed. It is high time that community expectations are fulfilled. In addition to the construction funds allocated by the City, contributions to the SBCA will be used for enhancements such as ramps for younger children, bleachers for parents and spectators, water fountains and other amenities not currently included in the construction budget. I commend Rex Dubiel and the members of the SCBA on their ground breaking initiative. It is an excellent example of a public/private partnership that can make a tremendous difference in our community. If you would like to be a part of this innovative community based effort, contact the SBCA or e-mail me at [emartin@honolulu.gov](mailto:emartin@honolulu.gov). Mahalo.

## **Boating Safety Class starts Saturday June 4, 2011**

The Hawaii Sail & Power Squadron, a local unit of the United States Power Squadrons® is offering a boating safety course for three consecutive Saturday Morning sessions from 8:00am-12 noon. The next course begins Saturday, June 4, 2011 at the Waikiki Yacht Club. This is ONE class that runs for THREE Sessions- June 4, June 11 and June 18, 2011

The boating course is open to anyone 16 years of age and older and is offered by the Squadron as a community public service. The course meets the State of Hawaii requirements as a certified boating safety course. Some insurance companies offer graduates discounts on boat insurance. You do not need to own a boat to take this course. The course covers all aspects of basis boating including:

Boat Types and Nautical Terminology

Boat Handling and Elementary Seamanship  
Navigation Rules (Rules of the Road)  
Marlinspike (learn to tie the 5 most useful knots)  
Federal and State Boating Safety Regulations  
Charts and Aids to Navigation  
Basic Piloting  
Sailing Fundamentals, Marine Radio, and Trailer Boating

The ABC Boating Safety Class is taught at the Waikiki Yacht Club (1599 Ala Moana Blvd -At the Diamondhead entrance of Ala Moana Beach Park.)

The cost of the class is \$50.00. There are LIMITED seats for the class. For more information, please call (808) 291-4338.

# Waimea Valley Mother's Day Brunch

**Sunday, May 8th**  
Pikake Pavilion

10:30am to 2:00pm

1st seating at 10:30 · 2nd seating at 12:30 · Reservations Recommended

**Adults: \$40\* • Children (4-18): \$20\* • Children (Under 4): Free**

*Brunch features exquisite selections from Chef Loren of Kimo's Akamai Catering and includes a Carving Station with Roast Beef and Turkey, an Omelette and Crepe Station, Assorted Baked Goods, three different Salads, an array of sides such as Hapa Rice and Skillet Potatoes and much more!*

**Included with Brunch is also Valley Admission, Entertainment, Keki Crafts and a Special gift for Mothers!**



WAIMEA VALLEY

**Please call for Inquiries or Reservations**  
**(808) 638-7766**



**Direct From  
Donovan**  
**State Senator  
Donovan Dela Cruz**

As we enter the final days of our legislative session, I am pleased to report that two bills which I introduced have been adopted and sent to the governor for signature. These bills are:

SB 698: Relating to Roadway Materials. With this bill, road construction and improvement are no longer mandated to use a minimum of ten percent crushed glass in all basecourse and subbase material. This material, known as Glassphalt, was originally developed as an alternative to landfill disposal of waste glass. However, with the advent of the HI-5 program in 2005 and the success of the recycling effort, more uses for recycled glass are now available.

When this bill is implemented, we will no longer need to pay someone to dispose of unrecyclable asphalt. Reclaimed asphalt pavement (RAP) remains whenever roads are resurfaced or repaved. Unfortunately, due to existing law, RAP that contain even scarce amounts of glass are not permitted to be used in surface pavements. Glassphalt apparently reduces road quality and tends to be skid resistant.

This bill will allow the sale of RAP back to paving companies since glass is no longer required to be used in the paving material. Therefore, rather than paying companies to dispose of Glassphalt, the state and county will now be able to derive revenue from it.

SB 1559: Relating to Important Agricultural Lands (IAL). Important agricultural lands are lands so designated because they are held, owned or used by agribusiness, except if they are in a conservation district.

This bill establishes incentives for IALs. It requires priority processing of permit applications and renewals for agricultural processing facilities that process agribusiness crops or livestock produced on land designated as IAL.

It also requires the Public Utilities Commission to establish preferential rates for the purchase of energy for agricultural activities on IALs.

Since most of the agricultural land is in Central Oahu and the North Shore, I would like to see these lands remain in agriculture in perpetuity by designating them Important Agricultural Lands. Therefore, the Intent of this bill is to provide incentives for landowners to preserve and maintain IALs.



**A Message From  
State Representative  
Gil Riviere**

Congratulations to Antya Miller and the North Shore Chamber of Commerce on receiving Historic Hawaii Foundation's Preservation Commendation for saving the Haleiwa Mutual Telephone Co. Building from demolition and rehabilitating the structure into the new home of the North Shore Chamber of Commerce.

The Haleiwa Mutual Telephone Co. Building was kindly donated by George and Florence Fujiwara. Robert Fox assisted with architectural expertise and numerous volunteers donated time on carpentry, electrical work and painting. Mahalo to Antya, the North Shore Chamber of Commerce, and everyone for their dedication to completing this beautiful renovation project.

The Historic Preservation Honor Awards are Hawaii's highest recognition of preservation, rehabilitation, restoration or interpretation of the state's architectural, archaeological and cultural heritage.

Congratulations as well to FFKR Architects, The Church of Jesus Christ of Latter-day Saints and Jacobsen Construction Company for the restoration of

the Laie Hawaii Temple, which was built in 1919 and constructed with local building materials such as koa wood. Repairs and improvements were based on original architectural drawings, photographs and historic archives to complete the work and select new materials based on the historic compatibility.

Thanks to Junior Primacio, Chair of the Koolauloa Neighborhood Board Agriculture Committee for organizing an agricultural talk story at Kahuku Library on April 19. It was a great opportunity to discuss issues and concerns faced by our farmers and ranchers and to provide an update on agricultural bills that were still being considered for final approval in the Legislature.

At the time of this writing, it is expected that the budget and other final decisions will have been worked out by May 5th, the scheduled final day of this year's Legislative. Of course, residents know that May 5th is also Boys' Day in Japan and Cinco de Mayo in Mexico.

Look for our monthly TV program, Gil Gets it Done, on Olelo 54. In this program, we spotlight various community leaders and organizations throughout our great district. The first three programs are "Farm to School," "Kids Fly Free," and "North Shore Irrigation Systems."

As always, feel free to share your thoughts and concerns by calling me at 586-6380 and please visit [www.Gilriviere.info](http://www.Gilriviere.info) for the latest information about our district.

**DRAFTPLANS HAWAII**

- Over 10,000 floor plans & blueprints available for purchase online. Gather ideas for your own design.
- Drafting Service available for new home designs, additions, renovations, decks, fence, rock walls, etc.
- Free property specifications & title search info.

[www.draftplans.com](http://www.draftplans.com)

Call for free estimates:  
**265-0035**

*Vegas*

**SHOOT OUT**

AT MILILANI GOLF CLUB

SATURDAY JUNE 11TH  
11:00AM DOUBLE TEE START

- \* 2 - Person Scramble (Peoria Scoring)
- \* No Handicaps
- \* \$79 Per Person Entry
- \* REGISTRATION DEADLINE IS MAY 20TH
- \* 1ST PLACE: Trip to Vegas (\$500 Vacations Hawaii)

**SIGN UP AVAILABLE IN THE PRO SHOP**

Mililani GOLF CLUB 95-176 Kuahelani Avenue Mililani, HI 96789  
Ph: (808) 623- 2222 [mililanigolf.com](http://mililanigolf.com)

**FREE LEGAL CLINICS**

Saturday, May 7, 2011  
10 a.m. - 2 p.m.

**FREE** Legal Information on a variety of topics including:

- Bankruptcy • Divorce • Child Custody • Elder Care
- Employment Law • Estate Planning • Landlord Tenant
- Wills and Trust and others...

Statewide Locations:

- Don Quijote - Kaheka → Confidential
- Don Quijote - Pearl City → No client solicitations or fees
- Don Quijote - Waipahu → Convenient Locations
- Haleiwa Historical Gym (Haleiwa/Waiialua) → Open to all
- Sack N Save (Nanakuli) → No appointments necessary
- Waianae Coast Comprehensive
- Health Center (Waianae)
- Windward Mall Shopping Center (Windward)
- Filipino Festival (Kapiolani Park)
- Kapolei Marketplace (Kapolei)
- Kona Coast Shopping Ctr. (Kona)
- Puainako Shopping Ctr. (Hilo)
- Kukui Grove Shopping Ctr. (Kauai)
- Lahaina Cannery Mall (Maui)
- Maui Mall (Maui)

**YLD**  
YOUNG LAWYERS DIVISION  
Hawaii State Bar Association

For more information visit:  
[www.hsba.org/younglawyers.aspx](http://www.hsba.org/younglawyers.aspx)

THE RETURN OF THE VERY POPULAR NORTH SHORE CANOE CLUB FUNDRAISER  
**19th Annual**

*Eggs Benedict Breakfast & Auction*

Surfboards • Clothing • Bikes • Dinners • Artwork  
 CDs • Fishing Charters • Gift Certificates ... much more!  
 Visa & Mastercard now accepted for auction items

**Saturday, June 4 • 7:30 a.m. to 11:30 a.m.**

**at Hale'iwa Joe's**

Now only \$10.00! Call for advance tickets 753-7974.

Tickets also available at the door

www.northshorecanoecub.com



**We Pay You  
 \$100  
 CASH & FREE  
 TOWING  
 for unwanted vehicles  
 (complete)  
 636-7183  
 North Side Towing**

**The  
 Spaghetti Shack  
 is back!**

Authentic Homestyle Italian Cuisine  
 Daily Specials • Eat in/Take out

NEW LOCATION

55-730 Kamehameha Highway in Laie  
 293-8055 • 293-8077

Also: Surf & Gift Shop • Flowers & Jewelry  
 Gift Shop Open Mon.-Sat. 10 a.m.-8 p.m.

*Oceanside Chapel Service  
 at Turtle Bay Resort*



Every Sunday at 9 a.m. in the beautiful  
 oceanside wedding pavilion.

Hosted by Pastor Ron Valenciana

- Non-denominational 45 min. service
- Traditional & Contemporary music
  - 15 minute sermon
- Free gift to all first-time visitors
- All are welcome! Free validated parking

For more information call Pastor Ron at 342-3969.

\*When church is pau,  
 enjoy dining at the Palm Terrace,  
 Hang Ten Pool Bar, or Lei Leis.



*First predator proof fence continued from page 6*

tegrity of Ka'ena Point," said Loyal Mehrhoff, field supervisor of the Pacific Islands Fish and Wildlife Office. "The project will protect 11 known endangered plant species, ground nesting native seabirds and the endangered Hawaiian monk seal, and serve as a model for future conservation efforts throughout the Pacific."

The fence will keep out predators such as cats, dogs, mongooses, rats and mice as young as two days old from the Reserve so that native wildlife like the Laysan albatross and endangered native coastal plants can flourish. As the recent tsunami caused the loss of more than 112,000 Laysan albatrosses in the Northwestern Hawaiian Islands, there is a high need for elevated areas like Ka'ena Point to provide safe nesting habitat, especially as sea level is expected to rise due to climate change.

The protected area is close to being free of predators through intensive baiting and trapping efforts since fence construction began. Scientific monitoring is being undertaken to track the results of the fence over time. Methods are in place to detect if pests have re-entered the Reserve so that personnel may implement a rapid response.

As part of the predator proof fence, unlocked double-door gates have been installed at major entry-ways to allow the public to have continued use of the reserve seven days a week for hiking, bird-watching, fishing, cultural practices, and volunteer work. While an overwhelming majority of people who have been to Ka'ena Point have been in strong support of the project, modifications to the design have been made to address concerns, including the installation of a third walk-through gate mid-way between the Wai'anae and Mokule'ia entrances.

With the completion of the fence, recovery of native plant and animal habitat is expected in a few years. There are currently 65 nesting pairs of Laysan albatrosses including 35 chicks. That number is expected to double in next five years as young chicks return to breed and it is hoped that more native bird species will use Ka'ena Point as a nesting area, including the Black-footed albatross which has been seen recently in the area.

Volunteers interested in helping at Ka'ena Point are encouraged to contact the Friends of Ka'ena at [info@friendsofkaena.org](mailto:info@friendsofkaena.org). For more information on the project, go to [www.restorekaena.org](http://www.restorekaena.org).

Facts about the Ka'ena Point predator proof fence:

The first of its kind in Hawai'i and the United States, the fence was built by a New Zealand and local crew of approximately seven people. Construction began last November and was completed this March. The New Zealand-based technology has proven to be effective in both mountain and coastal environments, similar to Hawai'i, and able to keep predators as small as two-day-old mice from entering



*Dozens of dead albatross killed by dogs.*

protected areas.

The Ka'ena Point predator-proof fence is 640 meters long (2100 feet or 700 yards) and 6.5 feet (2 meter) tall fence follows the existing upper roadbed to minimize disturbance and enclose the tip of the peninsula, a total of 59 acres, or less than 1/10 of a square mile. Three unlocked double-door gates were installed at each entrance to the reserve (from Mōkūle'ia and from Wai'anae) and mid-way between the other two, to allow access by people. The fence material includes marine grade stainless steel for strength and corrosion resistance, and a rolled hood to prevent animals from climbing over. The fence is painted a dark green to blend in with the natural environment when seen from a distance.

After the fence was constructed, project personnel began to remove predatory animals from the reserve by using traps for larger animals and a combination of bait boxes and traps for rodents. These methods were selected after a one-year study of rodent abundance and behavior.

Scientists will continue to monitor native plants, seabirds and invertebrates after predator removal to evaluate the effectiveness of the fence. Methods will be in place to detect if pests have re-entered the reserve so that personnel may implement a rapid response.

How the fence works:

The Excluder predator-proof fence is four-tenths of a mile long, in the Ka'ena Point Natural Area Reserve. It is part of an integrated management plan and education effort to protect, preserve, and restore the native environment of Ka'ena. The Ka'ena wilderness area at the northwestern tip of O'ahu is managed by DLNR as a natural area reserve and state park.

The 6.5 foot high fence is designed to keep out predators like cats, dogs, mongooses, rats and mice from the reserve so that native seabird species that nest in the reserve, like the Laysan albatross, and endangered native coastal plants can flourish again in a safe environment.

*Continued on page 16*

# North Shore Chamber of Commerce THIRD ANNUAL BUSINESS EXPO



Presented By   
**First Hawaiian Bank**

## THE 3<sup>rd</sup> ANNUAL BUSINESS EXPO

Hosted by



Mahalo to our  
supporting sponsors



Guest Speaker  
**DON HORNER**

We are pleased to bring you the 3rd Annual Business Expo! It is a priority of the North Shore Chamber of Commerce to offer our members and the North Shore business community a venue for developing sound business practices and accessing professional services.

The Expo offers six 45-minute seminars on a variety of relevant topics as well as the opportunity for businesses to promote themselves in the exhibitor area. This year we are pleased to announce that our keynote speaker is Don Horner, CEO of First Hawaiian Bank and Board Chair of the Hawaii Tourism Authority.

Join us at Turtle Bay Resort for a day of revitalizing business strategies, preparing for the future, and networking with other North Shore business owners.

Download registration forms at [GoNorthShore.org](http://GoNorthShore.org)

May 25, 2011  
Turtle Bay Resort  
8:00am - 6:30pm

*Registration includes continental breakfast, lunch, and cocktail reception PLUS six seminars on topics that will help you in your business - all for only \$40 for members and \$50 for nonmembers!*

**Don't Miss This Incredible Opportunity to Get in Front of Valuable Customers from the North Shore!**

*Early Bird Discounts available for Exhibitors that Register by May 6th!*



**Class of 2011**

**Kahuku High School  
Thursday, May 19**

~

**Waialua High School  
Saturday, May 21**

**North Shore News  
SPECIAL GRADUATION EDITION  
June 1**

*First predator proof fence continued from page 14*

How to use and care for the gates: The fence has three entrances which are unlocked at all times. Each entrance consists of a double-gated entry. Persons entering or exiting the reserve can open one gate and once it closes, are then able to open the other gate to enter. Only one gate can be opened at a time, so as to prevent entry of animals that need to be kept out of the natural area reserve. If the doors are not sliding easily, check the bottom of the door to ensure that a rock is not caught under it, or that the other door is closed

Why is a fence needed? For decades, despite trapping efforts, predators were a continual problem in the reserve. In fall 2006, dogs killed 21 shearwater chicks in a single night at Ka'ena Point. In 2007, more than 125 native seabirds were killed in one evening, most likely by one or more dogs. Rats are known to kill and eat nestling chicks, which are too young to fly away. Rats and mice also eat seeds of native plants, preventing the growth and spread of new plants.

Before construction of the fence, a community consultation process took place over three years to educate the public about problems with predators in the reserve and the need for a fence. This process built a strong foundation of community support from groups such as the Friends of Ka'ena, as well as west side and north shore neighborhood boards and other community groups. Public education and support and cooperation with proper use of the fence will continue to be essential to the success of this effort to protect native wildlife at Ka'ena Point.

The U.S. Fish and Wildlife Service provided funding for the unique project to restore and maintain the environmental integrity of Ka'ena Point and protect 11 known endangered plant species, ground nesting native seabirds and the endangered Hawaiian monk.

Endangered plants known to exist at Ka'ena ([http://restorekaena.org/treasures-native\\_plants.html](http://restorekaena.org/treasures-native_plants.html))

- *Achyranthes splendens* var. *rotundata* (no known Hawaiian name)
- 'Awiwi (*Centaurium sebaeodes*)
- 'Akoko (*Chamaesyce celastroides* var. *kaenana*)
- Pu'uka'a (*Cyperus trachysanthos*)
- Ma'o hau hele (*Hibiscus brackenridgei*)
- Kulu'i (*Nototrichum humile*)
- Carter's panicgrass (*Panicum faurieri* var. *carteri*)
- Dwarf naupaka (*Scaevola coriacea*)
- Schiedea kealiae (no known Hawaiian name)
- 'Ohai (*Sesbania tomentosa*)
- *Vigna o-wahuensis* (no known Hawaiian name)

For more information on the project, go to the website: [www.restorekaena.org](http://www.restorekaena.org).



The North Shore News is delivered free to residents in Moku-leia, Waialua, Haleiwa, Kawailoa, Waimea, Pupukea, Sunset, Kawela, Kahuku, and Laie. A subscription is available for other cities on Oahu, Outer Islands, or Mainland U.S. or Alaska for just \$27.00 per year for 25 issues for delivery by standard bulk mail (2-3 weeks Mainland) or \$48 delivered by 1st class postage (3-5 days). You may subscribe by using check, money order or credit card (VISA, MC, AMX).

Mail North Shore News to:

Recipient \_\_\_\_\_

Address \_\_\_\_\_

City \_\_\_\_\_

Credit Card # \_\_\_\_\_

Expiration \_\_\_\_\_

Return this form with payment to:  
North Shore News  
66-437 Kam. Hwy. #210  
Haleiwa, HI 96712

CLIP

Subscribe  
to the  
North  
Shore  
News



# BULLETIN BOARD

LIC. #AC 18275



**COWPER CONSTRUCTION**  
**GENERAL ENGINEERING CONTRACTOR**  
 Full Service Sitework Contractor  
 Septic Systems & Tanks  
 25 yr. exp.  
**Michael Cowper 638-7200**  
 cowperhawaii.com



**ROB'S**  
 auto repair service

Robert Oakley ASE Certified Master Mechanic Computer & Electrical Specialist  
 Owner  
 Waiialua, Hawaii  
 (808) 330-0459

**N-C PLUMBING & SUPPLY**  
 Cont. Lic. No. C-8913



- RESIDENTIAL & COMMERCIAL SALES & SERVICE
- CONTRACTING & DESIGN • HOME PLUMBING SERVICE
- PLUMBING FIXTURES, HEATERS • FREE ESTIMATES

Nestor P. Calilao (Owner) Bus: 637-8662  
 P.O. Box 769 Res: 638-5157  
 Waiialua, HI 96791 Cellular: 372-8718

email: nncplumbing@hawaii.rr.com



"HONEST DEALS ON QUALITY CARS & TRUCKS"  
 Established 1985  
**LINNE HOLMBERG**  
 Owner  
 Honolulu: 834-0808  
 Fax: 834-6602  
 Cellular: 222-4272

530 Paiea St. Honolulu, HI 96819  
 Lonestarmotorsportsllc.com

**Bank of America**  
 Home Loans

Jay Oku  
 Mortgage Loan Officer

Tel: 808.275.8900 Cell: 808.393.0707  
 jay.oku@bankofamerica.com

HI2-902-01-03  
 55 Merchant St 16th Floor, Honolulu, HI 96813  
 Equal Housing Lender



Specializing in vegetarian foods, vegan foods, whole foods, organic food. Wheat free, dairy free, raw foods, gluten free. A complete selection of natural foods for 37 years. Make earth day, everyday.  
 Open 7 days.  
 Mon.-Sat. 9am-6pm.  
 Sun. 9am-5pm

66-445 Kam. Hwy  
 Haleiwa, Hawaii 96712  
 Next to the Post Office  
 808-637-6729 • 808-637-1922 fax

**HAIR SPECIAL**  
 Full Highlight and Cut \$100.00  
**GINA WALKER**  
 Hairdresser to the stars from Malibu, CA  
 Cut and Highlight Master  
**Now at North Shore Nails Salon & Spa**  
 The nicest salon in Haleiwa  
 375-3984

**MacMurray and Sons Construction LLC**  
 New Construction. Remodels, Granite.

Jason MacMurray  
 BC 30144  
 Licensed, Bonded, Insured


1-808-479-7365  
 Fax: 808-638-7121  
 Jason@macmurrayandsons.com  
 www.macmurrayandsons.com




**Waialua Bakery**  
 New Hours:  
 Open Monday - Saturday  
 10am - 5:00pm  
 fresh sandwiches, smoothies, and baked goodies  
**808-341-2838**  
 Fresh Fruits and Greens supplied by:  
**Farmer and The Baker llc**  
**808-341-1992**

**QuickBooks® got you stumped?**  
 Call us, we can help!

As a QuickBooks® ProAdvisor, we provide the software, support, information and resources necessary to give outstanding service to all of our QuickBooks® and small business clients.



**Call today for a free consultation.**  
 808-293-9290  
 KamaainaBookkeeping@hawaii.rr.com  
 www.KamaainaBookkeeping.com



# What's Up at Waialua High & Intermediate

By Principal Randianne Porras\_tang

**Middle School State History Day Winners:** Several Middle School students participated in the State National History Day Competition at Windward Community College in April. Two projects were selected to represent Hawaii at the National History Day Competition in Maryland this summer: Brianna Lucas-Individual Exhibit Project and Leah Acorda, Jeania Deuz and Kiana Paakaula-Reis-Group Documentary project. Their social studies teacher is Mrs. Danette Holdren.

**Veterans of Foreign Wars Honor Students and Teacher:** The Veterans of Foreign Wars of the United States sponsored the Voice of Democracy Audio Essay competition. Member of the VFW's Mililani Post 352, Joseph McCloskey, Post Assistant Chaplain, John Williams, soon to be Post 352 Quartermaster and Alfredo Antonio, VFW State Commander, presented special recognition awards to Waialua High and Intermediate School 10th graders, Jonathon Oishi and Oliver Manzano for their excellent audio essays. Social Studies teacher, Mrs. Danette Holdren, was honored with the VFW National Teachers Award honoring teachers who perpetuate our nation's noblest traditions and highest values.

**WHIS Band Entertains at Waikiki:** The Waialua High and Middle School Bands performed at the Royal Hawaiian Shopping Center on Saturday. Students represented our community with pride and precision! Mahalo for the support of parents, teachers, and community who attended the concert!

## IMPORTANT SENIOR DATES:

May 6th Senior Service Credits forms due!!!!

May 13th Senior Banquet at Leilehua Golf Course  
5:30-10:00pm

May 15th Baccalaureate at Waialua Community Center @ 5:30pm

May 16th Senior Sneak Away 8:00 - 4:00pm

May 17th Last Day for seniors. Clearance at 2:00pm

May 18, 19, and 20th Song Practice from 8-2.

8-2 on the 20th, exact time to be announced.

May 21st Senior report to GYM at 3:00 Graduation begins at 5:30.

If you have questions about any of these functions/activities, please call Ms. Akina at 537-8200.

## CTE Showcase:

Congrats to 1st place winner Chelsea Hardin for her T-Shirt design, Aloha Haleiwa!

## Business Partners:

Congratulations and mahalo to the Luis and Taryn Silva chef and owners of Luibueno's Mexian and Seafood Restaurant. At the restaurants anniversary celebration invited guests contributed funds to support Waialua High and Intermediate School. Luis Silva and Jade Vida Silva, Luis' daughter presented a check to the school on March 20th. The donation will be used to assist the History Day State Winners' trips to Washington DC for the National Competition.

Dole Plantation will be hosting the annual luau

fundraiser for the WHIS Robotics Team on May 12th. If you are interested in purchasing a ticket to the luau, please contact Glenn Lee at 637-8200.

Mahalo to our business partners for support our students in their academic endeavors.

## Congratulations to WHIS Athletes:

Waialua Bull Dogs Participate in Regional Special Olympics....Three Waialua High and Intermediate School students won medals at the Regional Special Olympics held at Kaiser High School on April 9. Flore Calilao, Sara Supranovich and Simone White each competed in their skills bracket and each was awarded medals for their efforts.

Calilao, Supranovich, and White had been in training the last several months in order to practice and condition themselves for the Regional Special Olympics. The training paid off for these Lady Bulldogs and each was able to compete in three events.

These athletes were recently honored at a Pep Rally held at Waialua High and Intermediate School. They were recognized for their energy, athletic ability and most importantly their bulldog pride. These three athletes represented the true spirit of Waialua High and Intermediate School.

Calilao, Supranovich, and White plan on competing in the State Special Olympics to be held at the University of Hawaii on May 27-30.

**BASEBALL Makes WHIS History:** For the second time in the last two years students went to OIA playoffs. This year, the team participated in the second round of playoffs. This was the first second round playoff in at least 14 years! Their season was exciting and gave the fans a lot to cheer about.

**TENNIS:** The tennis team ended a fine season playing in the OIA playoffs.

**VOLLEYBALL:** Volleyball ended their season in OIA playoffs. They had an awesome season, working hard to reach the playoffs!

**SOFTBALL:** Lady Bulldogs will participate in the State Tournament beginning May 3rd. The team enters the tournament as the 4th seed.

Congratulations to all athletes who displayed teamwork, sportsmanship, and perseverance throughout the season! Mahalo to parents, families, and community who came out to support our student athletes!

**Robotics on the move:** The VEX team returned from the world VEX tournament in Florida. The teams were very close to being in the finals. Mahalo for all of the teams hard work and time spent on building the VEX robot and practicing. WHIS Robotics team competes in Missouri at the World FRS Tournament during the first weekend in May.

# BULLETIN BOARD

## BOW WOW BUNGALOWS

Licensed Boarding Kennel  
North Shore, Oahu

Reasonable Rates • Ph. 637-2562

*These Dogs Have Fun!*



*"The Name Says It All"*

Roofing  
Repair • Maintenance  
Coatings • Decking • All Types  
Lowest Price • Guaranteed  
Free Estimates • Insured

**Dave McEuen**  
dave@theroofrepairspecialists.com

For Prompt Service  
**888-8290**

Island Wide 24/7  
*"Family Owned and Operated"*

## Paradise Lua



Parties • Special Events  
Anykine Private or  
Public Functions

*"Portable Sanitation at its finest"*

**690-8116**



Featuring the largest selection  
of certified organic produce  
on the North Shore.  
No panic...ours is organic.  
Open 7 days.  
Mon.-Sat. 9am-6pm.  
Sun. 9am-5pm

66-445 Kam. Hwy  
Haleiwa, Hawaii 96712  
Next to the Post Office  
808-637-6729 • 808-637-1922 fax



**LEIGH DIVERSIFIED  
CONSTRUCTION, Inc.**

General Contractor Lic. No. ABC-22035

Home Design-Permits-Construction  
Sitework, Septic System & New Plumbing, Concrete,  
CMU Walls, Asphalt Re grind in-place Driveway

**George Leigh or John (Ph:683-0081 Fax:683-0083)**  
www.leighdiversified.com

*When it's time to tie the knot...*

**www.hawaiiweddingminister.com**

informal beach weddings a specialty

(808) 342-3969

## SUNSET AUTO SERVICE, INC.

- Auto air conditioning specialist
  - Auto engine maintenance
  - Safety inspection station
- Walking distance to Wahiawa DMV

Call for appointment  
622-5510

Matt Verdadero  
207 N. Cane St., #1 Wahiawa



## 1 STEP COLOR & HAIR SPECIAL \$80.00

*Are you tired of not getting your grey  
properly covered & your hairdresser  
running 30 minutes late?*  
Try me Gina Walker, from Malibu, CA.  
20 yrs. experience. 808-375-3984  
**North Shore Nails Salon & Spa**

### Electrical services

- Add circuits, outlets, lights
- Troubleshooting
- Remodels
- Service upgrades
- New construction
- Residential
- Commercial
- Tenant improvement
- Energy efficient fixtures



### Green services

- Photovoltaic Solar
- Solar hot water
- Solar attic fans
- Solar light tubes
- Home energy audits  
and consulting
- Energy conserving  
doors and windows
- Spray in insulation

**Roderick Martin LIC# 29191 www.greenflashelectric.com**  
808 854 9636 fax:877 310 5876

## Statewide Hotline for Litter

**1-888-592-2522**

Callers need to provide:

1. License plate number
2. Make and model of vehicle
3. Date and time and location
4. What was thrown/blown

**CASH**  
 FOR YOUR  
**ROLEX**  
 GOLD & DIAMONDS  
**TODAY**

OUR  
 BUYERS  
 ARE  
 HERE  
 ON THE  
 PREMISES



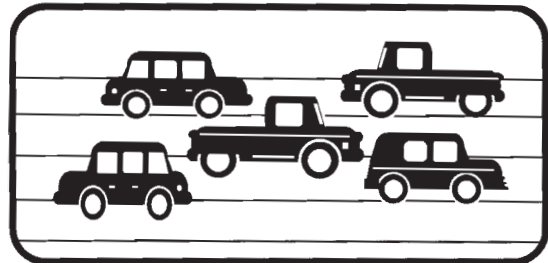
FROM  
 OUR  
 RETAIL  
 AND  
 COLLECTOR  
 DIVISION

**TOP DOLLAR**  
 FOR ROLEX AND OTHER  
 SWISS WATCHES, DIAMONDS, GOLD  
**ALL THIS WEEK**

**CALL** PACIFIC DIAMOND  
**943-6210** WATCH WHOLESALERS  
 1356 Kapiolani Blvd.

**DONATE YOUR  
 VEHICLE**

running or not



Once A Month Church

a 501c3 charity serving the North Shore

Over 150 good used cars GIVEN  
 to needy individuals possessing  
 valid driver's license past 5 years.

342-3969  
 for more information

**COMMUNITY CLASSIFIED ADS**

Heading: (circle) For Sale - Rentals - Services - Lost/Found - Help Wanted - Misc.

Issue Date: \_\_\_\_\_

Name: \_\_\_\_\_

Contact No.: \_\_\_\_\_

Non-business ads - \$3.50 per line, no minimum  
 Business ads including services - \$5.50 per line, minimum 3 lines  
 Lost/Found ads - no charge up to 3 lines  
 Box ads - \$35.00 per column inch

ADS CAN BE DROPPED OFF IN MAIL SLOT, MAILED, FAXED OR EMAILED (NShorenews@aol.com) TO NORTH SHORE NEWS. DEADLINES ARE THE FRIDAY AFTER OUR PREVIOUS ISSUE (THURSDAY IF FRIDAY IS A HOLIDAY). MAKE CHECKS PAYABLE TO: NORTH SHORE NEWS, PHONE ORDERS WITH CREDIT CARDS ONLY.

Print your ad clearly in the space below by using proper spacing and punctuation. We reserve the right to refuse any advertisement with full refund.

**Non-Business Personal Ad**  
**\$3.50 per line • No minimum**  
 Includes tax.

**Business Ad**  
**\$5.50 per line (min. 3 lines)**  
 Includes tax.

\$3.66  
 7.32  
 10.99  
 14.65  
 18.32  
 21.98


\$17.27  
 23.03  
 28.79  
 34.55

North Shore News P.O. Box 1117 Haleiwa, HI 96712  
 Ph: (808) 637-3138 • Fax: (808) 637-8862



# CLASSIFIEDS

The North Shore News is published every other Wednesday and mailed free of charge to all North Shore homes and businesses. Extra copies may be obtained at our office.

**PRESS RELEASE POLICY:** Submit press releases in person or by fax, mail or email to Editor, North Shore News, P.O. Box 1117, Haleiwa, HI 96712. Please type your releases and keep them shorter than 200 words unless they are of an unusual news interest. Releases should be viable news stories and are published on a **space available basis only**, with priority given to those received in our office first. You may attach photos. We are not responsible for the return of any photos. All materials are submitted at owner's risk. We reserve the right to edit and/or refuse all submissions including advertising.

**EDITORIAL POLICY:** We welcome articles and letters from our readers. Letters to the Editor are published on a space available basis only and preference is given to shortness of length, and quality of content. We prefer to run not more than one letter, per person, per 6 month period. Letters subject to edit.

Views expressed by our contributing writers and advertisers do not necessarily reflect the view of the management and staff of the North Shore News. All rights reserved. Reproduction in whole or part without permission is prohibited. © 2011.

♥♥Need a minister for a North Shore wedding? Hundreds of knots tied for happy couples on Oahu. Simple beach-side ceremonies to formal church or chapel services. I'll make your special day an extraordinary memory. Call & leave clear message with phone number & possible date, time & place. 342-3969. Also: Vow renewals, house blessings, baby luaus.

**PAUMALU ELECTRIC**  
David C. Hancock  
638-9054 / Lic#C18074

**SHORE ELECTRICAL SERVICE**  
New Const-Remodels  
638-0049 / Lic#C20777

FREE Pregnancy Test  
Above Haleiwa Post Office  
Call for hours 779-4685

LGR Construction  
Remodel • Repair • Design  
Drafting • Painting • Small Jobs  
Affordable rates. 343-4453/Lic#26759

**Dog/Cat Nail Trimming**  
at your home only \$15.00  
Call Julie 637-5395

**Aloha Computer**  
PC Repair/Virus Removal  
Fax/Copy/Internet Access  
372-2667 or 237-4558

**Lawn Care For You**  
Mowing, Trimming, Light Hedging  
Call Thomas 637-5839

**Ross McGerty BC24080**  
349-6359 • 637-9539  
**From Waiialua to Sunset**  
**Make Me the First Call**  
**for Home or Rental Repairs**  
**or Renovations**

**Seamstress**  
Rita Bell  
497-3666

**PARADISE PLUMBING INC.**  
New Const • Repairs • Remodels  
808-368-1473 / Lic. 29856

**Holo Holo Mobile Screens**  
New Screens • New Frames  
Screen Repairs • Pet Proof Screens  
Sliding Screen Doors • Affordable Rates  
Call Today 783-8764

**EXPERT ELECTRICIAN**  
Fans, emergency services, etc.  
Jim Richards 371-9369

**BEACH PLUMBING & ROOTER**  
Over 30 years experience  
Call Larry 637-6400

**GOT SOLAR?**  
**Save Money — Help the Planet**  
**For info call Jim Richards**  
**371-9369**

North Shore Tax Service  
40+ experience on Oahu  
**Jeannine Poling**  
Enrolled Agent Before IRS  
Tax questions?  
**Call 638-5130**  
or email kumupali@hawaii.rr.com

**Ohana Clean Up**  
Carpet Upholstery Cleaning  
Pressure Washing  
375-1814 • 979-5579

**Handyman Services**  
Remodeling, Carpentry, Floors,  
Concrete, all parts of Construction  
Call Bob "The nicest guy in the  
business" Ph. 282-2812

**NORTH SHORE EXTERIORS**  
Quality carpentry at a fair price  
446-5445

**Kids on Stage 808**  
Creative & Performing Arts  
7 yrs.-12 yrs. old  
Thursday, May 12th  
3:00-4:15 • Haleiwa Gym  
284-1016 for more info

**Bikram Yoga**  
*Stretch, strengthen & stimulate mind & body.*  
**All ages and levels.**  
*Please call for class schedule*  
**637-5700**

**SHIATSU • LOMI**  
**Aromatherapy**  
**Milica Barjaktarovic**  
**Lic # MAT8348**  
**351-0848**  
**HumanRemodeling.com**

N.S. Property Maintenance  
Power wash, painting int/ext,  
deck repairs, extensions,  
fences, gates,  
carpentry & remodels.  
Maintenance, lawn & yard.  
Chris 381-5213/638-0659

**North Shore Pumping**  
Cesspool & Septic Pumping  
Complete Plumbing  
Services, new & repairs  
Lic. & insured #25567  
638-0900 • 291-5089

**Lisa Carley Skin Care**  
637-9400  
lisacarley.com  
67-292 Goodale Ave. #104  
Waiialua Shopping Center

**LEARN TO SWIM**  
AT THE  
**HAWAII SWIM**  
**SCHOOL**  
ON THE NORTH SHORE  
Developing swimmers since 1982  
Haleiwa Rd. at Smiley Place  
637-4863

**SUBSCRIPTION RATES**  
If you live outside the North Shore area on Oahu, neighbor islands, or the mainland, you can subscribe to the North Shore News. Our annual subscription rate is \$27 for 25 issues delivered by standard bulk mail (2-3 weeks), or \$48 for 25 issues delivered by first class postage (3-5 days). Call our office for payment information at (808) 637-3138.

## HOW TO CONTACT THE NORTH SHORE NEWS

Letters to the Editor, and other items submitted for publication consideration may be sent to us via:

MAIL: P.O. Box 1117, Haleiwa, HI 96712

E-MAIL: NShoreNews@aol.com

FAX: (808) 637-8862

PHONE: (808) 637-3138

**For Advertising Rates,**  
**call**  
**637-3138**

**PUBLISHER/EDITOR**  
**RON VALENCIANA**

**TYPOGRAPHY**  
**DOWNTOWN GENERAL STORE**

**BOOKKEEPING & CLASSIFIEDS**  
**LINDA SEYLER**

**CONTRIBUTING WRITERS**  
**RON VALENCIANA,**  
**BUTCH HELEMANO,**  
**NATY HOPEWELL**

# CLASSIFIED ADS

**hawaiiweddingminister.com**  
**342-3969**  
 31 years experience

**Offshore Plumbing, LLC**  
 Commercial • Residential  
 • Septic • Plumbing Design  
 Mike Duenas, owner  
 Lic #C28113  
 630-1407  
 Fax: 637-7870 • Office: 371-3451  
 offshoreplumbing@yahoo.com

**BOBBY'S BODIES**  
 Tuesday evenings at 5:00 p.m.  
 • Body Toning  
 Friday mornings at 9:00 a.m.  
 • Cardio Pump/Fat Burner  
 For more info: call Bobby, owner of  
 BOBBY'S BODIES at 637-4150

**Windward Shoe Repair  
 & Small Engine Clinic**  
 Waialua Shopping Center  
 Mon.-Fri. • 8am-4pm  
 234-8135

**NORTH SHORE TV**  
 To all earth friendly consumers  
 Do you have a TV you no longer  
 want or need? Call us first before  
 you take it to the dump.  
**North Shore TV @ 637-4111**  
**No drop offs without prior  
 notification.**

**THE LAWN RANGER**  
 Lawn Maintenance  
 no yard too hard  
 no lawn too far gone  
 We mow betta  
 258-6439 Dan Fatchett



**Marianne  
 Abrigo, Properties**  
 Specializing in -  
 North Shore  
 Real Estate  
 Ask for our list of avail-  
 able properties and/or a  
 free market analysis.  
**Marianne M. Abrigo**  
 "Realtor since 1974"  
 Office **637-3511**  
 Fax **637-0777**  
 Email **mabrigo222@aol.com**

**Automotive Services  
 and Restoration**  
 • Auto Body & Paint  
 • Detail & Shampoo  
 • Upholstery  
 Rick Estrada - 216-9419

**HARVEY'S REPAIR, LLC**  
 24 hrs Towing Service  
 Specializing in opening  
 locked car doors  
 Call any time 478-0333

**GERMAN CAR SERVICE**  
 Professional-Qualified  
 Technician  
 Call Gary  
 637-6800

**Your Clean Home**  
 Specializing in residential/vaca-  
 tion homes & property manage-  
 ment. Experienced/reliable and  
 affordable. Green cleaning safe  
 for your family and our planet!!!  
 Please call for free estimate  
 (808) 638-0262 or 779-6604

Farm seeking responsible  
 hard working individuals.  
 Work included but not  
 limited to harvest, prune,  
 clean & prep w/ flexible  
 hours. Leave a message.  
**Call 707-200-1375**

**B.E. CONSTRUCTION**  
**Dumptruck & Backhoe**  
**Services**  
 Equipment, dirt, rock,  
 green waste hauling  
 in and out  
**DEMOLITIONS**  
**BRUCE ESCHÉ 783-9510**

**Hair Smoothing/  
 Straightening**  
**\$25 OFF!!!**  
 Henna Based • Lasts 3 months  
 Call Lindsay @ Giri Girl Salon  
 571.244.6276  
 www.hotbanghair.com

*Happy Mother's  
 Day!*

**HELP WANTED**  
**BUSSERS/SERVERS**  
 Pizza Bob's in Haleiwa is looking  
 for BUSSERS/SERVERS. Experi-  
 ence preferred. Apply in person  
 at 66-145 Kam. Hwy.

**Part Time Secretary**  
 Computer Skills Required  
 Mon-Thurs 10am-4pm  
 Fax Resume to 638-7643

**COOKS/KITCHEN HELP**  
 Pizza Bob's in Haleiwa is looking  
 for kitchen personnel. Experi-  
 ence preferred, but will consider  
 training the right people. Apply  
 in person at 66-145 Kam. Hwy.

**Retail Sales  
 Surf & Sea**  
 Hawaii's Ocean Sports Headquarters  
 is always looking for hard working,  
 energetic people to become a part  
 of our sales team. Good pay, bonus,  
 benefits. Ocean sports experience  
 and/or bilingual a plus. Apply in  
 person daily 9am-7pm  
 62-595 Kam. Hwy., Haleiwa

**FOR SALE**  
**NEW FRAMED WINDOWS**  
 Still in box...very cheap  
 34 @ 81-1/4" x 46-5/8"  
 7 @ 68-1/4" x 48-3/8"  
 6 @ 60-1/4" x 46-5/8"  
 Anodized frame. Gray tint.

See ad on Craig's List  
<http://honolulu.craigslist.org/oah/for/1271716623.html>  
<http://honolulu.craigslist.org/oah/mat/1270061937.html>  
 Or call: 834-0808

**FOR SALE**  
**Blank Canvases**  
 Pre-Stretched  
 Suitable for all types of  
 media. Cross bracing on all  
 sizes listed below:  
 Call 637-6666  
 47"x47" \$50  
 39"x39" \$40  
 36"x36" \$35  
 24"x36" \$25  
 24"x24" \$20

**Next Issue - May 18, 2011**  
**Deadline Date-May 5, 2011**

**FOR RENT**  
 Gmd Fl. Professional/retail  
 Space 466sq'/\$1,382.75/month  
 Xcel Bldg. Haleiwa 779-7779

3 Bedroom House for Rent  
 1-1/2 bath \$1,800 include utility  
 2 car park. No pets. 66-861  
 Wahihi St., Waialua, HI 96791  
 Phone: 637-5358, 864-3238,  
 780-8063

Rental Wanted Pupukea Cottage  
 I'm quiet & reliable  
 384-9222

**White Sand Beach**  
**Front Vacation Rentals**  
 Studio & 2Bdrm available  
 year round swimming  
 265-2125 / 247-3637

**Available Space for Rent**  
 Waialua Community Association (His-  
 toric Haleiwa Gym) has 512 sf cottage  
 available for rent to a non-profit or  
 business providing services that meet  
 the mission of the community center. Con-  
 venient location across from Haleiwa  
 post office and plenty of parking. Call  
 637-4606 for more information.

**MISCELLANEOUS**  
 Haleiwa Town Center  
 Retail space for lease.  
 636-2222

NS Seventh Day Adventists  
 Saturdays 9:15-12:15  
 67-174 Farrington Hwy.  
 (WUCC, next to WHS)  
 Info: 638-8209

**Haleiwa Historical Gym**  
**FREE LEGAL CLINICS**  
**Saturday, May 7, 2011**  
**10 a.m. - 2 p.m.**  
 FREE Legal Information on a  
 variety of topics including:  
 • Bankruptcy  
 • Divorce  
 • Child Custody  
 • Elder Care  
 • Employment Law  
 • Estate Planning  
 • Landlord Tenant  
 • Wills and Trusts  
 and others  
 Confidential  
 No client solicitations or fees  
 Convenient Locations  
 Open to all  
 No appointments necessary  
 Presented as a free community service  
 by the Young Lawyers Division of the  
 Hawaii State Bar Association

# CLASSIFIED ADS

## OFF da ISLAND

Are you leaving Oahu on vacation or business? Do you live on a neighbor island, the mainland or foreign country and subscribe to the North Shore News? Try send us a photo of someone in front of a sign or landmark holding a copy of the NSN. Email your photo along with the person or persons' name, community of residence, telephone number and photo location to: NShoreNews@aol.com. Or, mail to OFF da ISLAND Photo, North Shore News, P.O. Box 1117, Hale'iwa, HI 96712. We cannot return photos so please send us a copy. Photos received become the property of NSN. Preference and priority will be given to emailed photos.

## Statewide Hotline for Litter

1-888-592-2522

Callers need to provide:

1. License plate number
2. Make and model of vehicle
3. Date and time and location
4. What was thrown/blown

## How You Spell That?

The Once A Month Church lending library is putting out a call for new or used dictionaries, any size. Please drop off your donation at the North Shore News office, 2nd floor of the Haleiwa Post Office building.

## Outreach Services

Persons with Disability  
 Advocacy Benefits Housing  
 HCIL 54-113 Kawaipuna St.  
 Hauula, HI 96717  
 Ph. 293-9775 or 293-9777

## Class of '92 reunion potluck picnic

Saturday May 14, 2011 @  
 Ali'i Beach Park newer bathroom area (Judo Mission Side)  
 11am to 5pm  
 Please call Charlotte for more info @ 723-0353 or go to FB class page.

## BEACH CLEAN UP

Chun's Reef - 10 a.m.  
 637-2211  
 Last Saturday of every month  
 adoptabeachhawaii.org

## Waialua Farmers Co-op Market

Fresh Waialua-grown produce plants & more at the Waialua Sugar Mill

Sat. 8:30 a.m. - 2 p.m.  
 Wed. 4:30 p.m. - 7 p.m.

We are open even though the gate is locked!! Call to get in  
 638-8161 or 589-6242  
 Kamaaina Land Nursery  
 65-1140 Poamoho St.  
 Waialua



**Business Services Center**  
 Fast & convenient fax, copy, scan, computer/internet, laminate, etc.  
 Across from Haleiwa post office.  
 North Shore Chamber of Commerce  
 637-4558 or 342-8557

## Don't throw away that old BIKE!

Donate it to Yikes Bikes

A non-profit program at Waialua High & Intermediate School  
**637-8200**  
 M-F • 8 a.m.-3 p.m.

## REUNIONS

The NSN is happy to publish your school or family reunion Free of charge.  
 Email your announcement to NShoreNews@aol.com.

## IGREJA EVAN. BRASILEIRA

Domingos 10:00 am  
 Quartas 7:30 pm  
 Sextas-Culto de Oraçao 7:30 pm

Voce e o nosso convidado especial

Behind Hale'iwa Post Office  
 637-5566  
 Pastor Luiz • 638-2212

## SUNSET BEACH CHRISTIAN SCHOOL NOW ENROLLING GR. K-6 CALL 638-8274

## Summer Reading Program

The Waialua Public Library's Summer Reading Program is set for Tuesday, May 31, 2011 to Saturday, July 2, 2011. Participants read, fill out a reading log and receive one prize per week during the program.

## Book Club May 26

The Waialua Book Club meets on the fourth Thursday of every month at the library starting at 9:30 a.m. Anyone is welcome to participate.

## Book Sale

The Friends of the Waialua Library will be holding their monthly used book sale on Saturday, May 21 from 9 to 2. Books are priced from 25 cents to one dollar. We also have some special books that are priced from two to ten dollars. Mahalo to all who have donated books.

## Whitworth University Symphony Orchestra

Waialua United Church of Christ is privileged to have the Whitworth University Symphony Orchestra perform at its Weinberg Community Center (67-174 Farrington Hwy.) on Friday, May 20 at 7 p.m. The public is invited. Call 637-5934 for further information.

## Bake Sale is BACK! @ Waialua Library

Saturday, June 18 is the date for our sixth annual bake sale. This popular event held in combination with the monthly book sale, has been very profitable for Waialua Library, thanks to the generosity of so many donors of baked goods, chutney, jams, jellies, pickles, and more. We will again have our "Starbooks" coffee shop, where buyers can relax with Waialua coffee, lemonade, cookies and cupcakes while visiting with friends or enjoying a good read found at the adjacent book sale. Success, of course, depends on the participation of many supporters of the library, so if you would like to help by donating or by working at the sale, sign-up sheets will be in the library during the month of May, or you can call Petie McManus at 637-7446. Mark your calendars, spread the word, assemble your favorite recipes, and get ready for another great bake sale!

## Writer's Workshop May 14, Saturday 11 a.m.

We are pleased to announce a new activity on the part of Waialua Library. This is a group where aspiring and already practicing writers can meet and discuss their work and receive advice and encouragement. The group meets every second Sat. of the month at 11 a.m., with local author and former UH professor Derek Bickerton as facilitator. Anyone interested in writing is welcome. The first meeting was held on March 12 and had eight attendees.

## Tickets for May 12 Annual Waialua Robotics Team Luau Fundraiser now on sale

Tickets are now on sale for the Fourth Annual Dole Plantation Benefit Luau for the Waialua High School Robotics Team. All proceeds from the event, scheduled for Thursday, May 12 from 5:30 to 8:30 p.m. will support the team and its travel to competitions across the nation. Individual tickets are \$40. They are available for sale through April 30 at Dole Plantation. Tickets may also be purchased through robotics team members or by contacting Waialua High School.

## Native Hawaiian Forest Restoration Service Project in Laie set for Mid-May

Volunteers will spend Saturday, May 24, restoring the Ko'olau mountains above Laie to native forest. The forest restoration is planned by Envision Laie and groups in the Ko'olauloa area. Volunteers will meet at Laie Park at 8 a.m., hike up the Laie mountains and work until mid-afternoon. They will spend the day removing invasive species, helping restore endangered plants unique to Hawaii, and planting Hawaiian koa and sandalwood.

Community groups and individual residents are invited to join the project. Some of the supplies and logistical support will be dropped off by helicopter the day before with help from project supporters KMWP and the U.S. Army. Interested parties should contact David Bybee at 675-3804 about the May 14 service project. Additional service days can be arranged if enough interest is cultivated.

Approximate hiking time is 2 hours up (1,500 ft. elevation) and 1.5 hours down with 2-3 hours work time at the burn site. Volunteers must be in excellent health, wear good hiking shoes and bring their own lunch and drinking water. The hike is challenging and volunteers will be asked to sign a release.

Envision Laie represents a diverse group of residents and stakeholders of Laie and Ko'olauloa who are working together to study Laie and plan for its future possibilities, a future that protects quality of life and emphasizes the values of the people who live in the Ko'olauloa region. For more information, visit: www.envisionlaie.com.

# Happy Mother's Day!

# MALAMA Market

MALAMA MARKET HALEIWA:  
OPEN DAILY 7 AM-9 PM  
808.637.4520

MALAMA MARKET MAKAKILO:  
OPEN DAILY 6 AM-10 PM  
808.672.9955

Valid Dates:  
5/4/11-5/10/11

**Strawberries**  
16 oz. **2/\$6**



**Pepsi**  
Selected Varieties,  
12/12 oz.,  
Must Buy 3 **3/\$12**



**Tide Liquid or Powder Laundry Detergent and Gain Liquid Laundry Detergent**  
Selected Varieties,  
50-71 oz. **\$6.99**



**Pork Rib Tips**  
Frozen **\$1.49**  
PER LB.



**Lay's Potato Chips**  
Selected Varieties, 10-10.5 oz. **\$2.48**



**Hawaiian Isle Water**  
24/500 ml. **\$4.99**



**Extra Large Shrimp**,  
26/30 ct. **\$7.99**  
Previously Frozen PER LB.



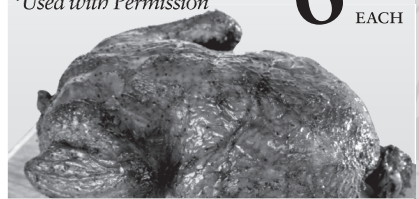
**Meadow Gold Ice Cream**  
Selected Varieties, 5 qt. **\$6.99**



**Decorated Single Layer Cake**  
Yellow or Chocolate, 8" **\$6.99**  
EACH



**Huli Huli\* Chicken Whole Roaster**  
\*Used with Permission **\$6.99**  
EACH



**Ragu Pasta Sauce**  
Selected Varieties, 16-26 oz. **2/\$4**



**Capri Sun Drinks**  
Selected Varieties, 10 Pk. **2/\$4.50**

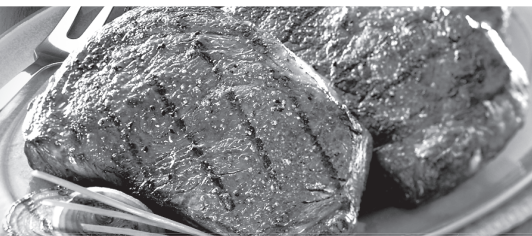


**Cinco de Mayo**  
**Corona, Pacifico or Durango Margarita**  
Ready to Drink 1.75 Ltr. **\$12.88**



**THURSDAY**

INCLUDES:  
**7-8 oz. Steak**  
Rice • Tossed Salad • Drink



**Grilled Steak LUNCH**  
**\$6.99**

**Hawaii Beverage Free**  
Hawaii Beverage fee of 1¢ per can or bottle will be added to purchase price at checkout. An Additional Hawaii Deposit fee of 5¢ will be charged for all specially marked beverage containers.

Limit five units (mix/match) per purchase, unless otherwise specified. We reserve the right to limit quantities. No sales to dealers. Prices plus applicable state tax. Hawaii EBT cards welcomed.