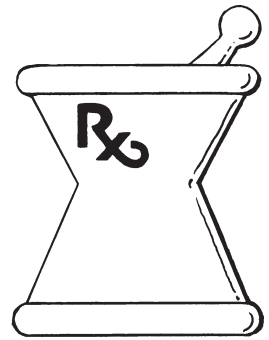




"E Ala Na Moku Kai Liloloa"

INSIDE
**2012 Health & Wellness
 Medical Edition**

(12 Page Insert)



NORTH SHORE NEWS

May 2, 2012

VOLUME 29, NUMBER 9



Casey McKinley, 13, from Sunset Beach attends Kahuku High and Intermediate school and competed in the NASTAR National Championships in Winter Park, Colorado March 23 -April 1, 2012. The NASTAR championship brings together over 1,000 competitors.

Sunset teen takes courage to Colorado slopes

Casey McKinley has cerebral palsy and competes for the NSCD (National Sports Center for the Disabled), the largest outdoor adaptive recreation center in the world.

Casey took first place in his Monoski division and 4th overall in the non-alpine division for his age group that includes Snow-

boarders, Telemarkers and Physically Challenged Racers.

Casey is a remarkable young man and an inspiration to many friends and peers.

PRE-SORTED STANDARD U.S. POSTAGE PAID Honolulu, Hawaii Permit No. 1479	Hale'iwa, HI 96712 66-437 Kamehameha Hwy., Suite 210
--	---


PROUDLY PUBLISHED IN
Hale'iwa, Hawai'i
*The Surfing
 Capital of the World!*



OFF da Island on a HOG

Part time Laie resident Rachel Larsen sits on her Hawaii bought Harley just outside of Bakersfield, CA. The photo was taken recently by her husband Stephen. We made an exception to the rule and did not require a recent copy of the NSN in the photo. For safe riding we're told its packed in the saddle bag, to remind them of the good times back on Oahu's beautiful North Shore. For more info on our OFF da Island photo campaign turn to page 18.

kiaaina.com





**ESTHER
KIA'ĀINA
CONGRESS**

Fighting To Create New Opportunities For All People - 20 years of Congressional experience in both the U. S. Senate and House of Representatives.

For more information call 808-591-2012

Paid for and authorized by Kiaaina for Congress





Relaxed sunset dining...

Relax in our beautiful ocean side atmosphere while you enjoy some of the finest recipes in the islands. We feature fresh seafood from Hawaiian waters everyday. Our lunch menu includes appetizers, hot and cold sandwiches, salads and daily hot specials.

Lunch 11 a.m. to 5 p.m. ☺ Dinner 5 p.m. to 9 p.m.
Saturday & Sunday Brunch 9 a.m.

*Jameson's by the Sea
located on Oahu's Northshore
at 62-540 Kam Hwy*

Info and Reservations
808.637.4336

YOU NEVER
KNOW WHO'S
GOING TO
DROP IN.

surfer [THE BAR]

It's more than a bar. It's an original.

OPEN DAILY @6PM - CHECK OUT THE LINE UP:

- MAY 2** *Talk Story Series ftg. Jamie Mitchell
Hosted by Jodi Wilmott | Doors open at 6p – Show starts at 8p.
- MAY 3** Brad Williams Comedy Night >> "Buss Laugh" and DJ After Party
\$25 tickets available at Turtle Bay Concierge/Show at 9p.
- MAY 4** Guitarist Jeff Linsky
\$15 tickets available at the Concierge Desk.
- MAY 5** Cinco De Mayo Aztec Electro Party / DJs, Comedian, Magician, Lasers,
day-glo neon dancers, body/face painting / \$10 at the door. Show starts at 9p.
- MAY 10** Tubed Thursdays ftg. Men in Grey Suits
\$10 at the door. Show starts at 9p.
- MAY 11** Paul Izak of Pressure Drop
\$10 at the door. Show starts at 9p.
- MAY 12** TURTLE BAY TURNS 40! 70's After Party with Ernie Cruz, Freedoms Progress,
The North Shore Weed Junction Band - Costume & Dance Contests. Non-ticketed.
- MAY 14** Hawaiian Music Monday >> Ka'ala Boys
Non-ticketed event. Show starts at 7p.
- MAY 17** Justin Nozuka
Show starts at 8p /Tickets: \$25 GA, \$35 VIP at bampprojet.com/LIMITED SEATS!

SUNDAYS. Karaoke Night >> Starts at 8p | Non-Ticketed Event.

MONDAYS. Hawaiian Music >> Show starts at 7p | Non-Ticketed Event.

TUESDAYS. Kanikapila >> Show starts at 7p | Non-Ticketed Event with Drink Specials

THURSDAYS. Get Tubed >> DJ Baumer & DJ Twilight spinning from 8p until 2a | \$10 after 9p.

Space is limited, we suggest ordering tickets for shows in advance.

Surfer, The Bar is 21+ after 10p.

Visit SurferTheBar.com for our full event calendar and updates.

*\$5 charitable donation suggested for Talk Story Nights.

FIND OUT
WHO IS
DROPPIN IN
THIS WEEK.



The Hale'iwa Family Dental Center, Ltd.



presents

"Comfort Dentistry" including—

- Relaxation Glasses
- Television Glasses
- Caring Staff
- Special Medication to help you relax
- Laser Cavity Detection
- New Patients Welcome!

Your teeth are much too important to neglect.

Call: 637-9652
for your reservation

We're conveniently located behind First Hawaiian Bank
in the heart of Hale'iwa.

Editor's Choice

"Campaign Season"

(Author Unknown)

While walking down the street one day a Corrupt Senator (that may be redundant) was tragically hit by a car and died.

His soul arrives in heaven and is met by St. Peter at the entrance.

"Welcome to heaven," says St. Peter. "Before you settle in, it seems there is a problem. We seldom see a high official around these parts, you see, so we're not sure what to do with you."

"No problem, just let me in," says the Senator.

"Well, I'd like to, but I have orders from the higher ups. What we'll do is have you spend one day in hell and one in heaven. Then you can choose where to spend eternity."

"Really?, I've made up my mind. I want to be in heaven," says the Senator.

"I'm sorry, but we have our rules."

And with that, St. Peter escorts him to the elevator and he goes down, down, down to hell.

The doors open and he finds himself in the middle of a green golf course.

In the distance is a clubhouse and standing in front of it are all his friends and other politicians who had worked with him.

Everyone is very happy and in evening dress. They run to greet him, shake his hand, and reminisce about the good times they had while getting rich at the expense of the people.

They played a friendly game of golf and then dine on lobster, caviar and the finest champagne.

Also present is the devil, who really is a very friendly guy who is having a good time dancing and telling jokes.

They are all having such a good time that before the Senator realizes it, it is time to go.

Everyone gives him a hearty farewell and waves while the elevator rises.

The elevator goes up, up, up and the door reopens in heaven where St. Peter is waiting for him, "Now it's time to visit heaven..."

So, 24 hours passed with the Senator joining a group of contented souls moving from cloud to cloud, playing the harp and singing. They have a good time and, before he realizes it, the 24 hours have gone by and St. Peter returns.

"Well, then, you've spent a day in hell and another in heaven. Now choose your eternity."

The Senator reflects for a minute, then he answers: "Well, I would never have said it before, I mean heaven has been delightful, but I think I would be better off in hell."

So St. Peter escorts him to the elevator and he goes down, down, down to hell...

Now the doors of the elevator open and he's in the middle of a barren land covered with waste and garbage.

He sees all his friends, dressed in rags, picking up the trash and putting it in black bags as more trash falls to the ground.

The devil comes over to him and puts his arm around his shoulders.

"I don't understand," stammers the Senator. "Yesterday I was here and there was a golf course and clubhouse, and we ate lobster and caviar, drank champagne, and danced and had a great time. Now there's just a wasteland full of garbage and my friends look miserable. What happened?"

The devil smiles at him and says, "Yesterday we were campaigning. Today, you voted."

Sunday, May 13th Mother's Day Brunch at Waimea Valley

One Sitting: 11:00am to 2:00pm

\$36.00 Adults

\$18.00 Children (ages 4-12)

Reservations: 638-7766

www.waimeavalley.net for Menu items

We're shaking things up!

AUTO LOAN RATE OF **4.50% APR***

Steer yourself in the right direction and head to Waialua Federal Credit Union for an amazing deal on auto loans! We'll make it easy for you to save cash on your next vehicle purchase with loans that feature:

Rate of
4.50% APR*

Terms for up to
6 years
(seven if the financed amount is over \$25,000)

Financing for up to
100%
of the dealer invoice

Plus, our no-hassle loan application and fast approval process mean you'll be driving home your dream machine in record time! So call or stop by today to get pre-approved—and see firsthand how we're shaking up loans and driving down rates!



WAIALUA FEDERAL CREDIT UNION

(808) 637-6737 • (808) 637-5980 • www.waialuafcu.com

*APR=Annual Percentage Rate.



ALL THINGS ELECTRICAL

Energy Conservation Specialists
Residential, Commercial and Industrial wiring. Variable frequency drives. Aquatics.
366-5398

Get off the grid!
Haleiwa Solar Electric
Photovoltaics, Off-Grid, Battery Back-up, Grid-Tie, Generators, Wind.
382-5546

LICENSE # 29659

CLEAN, GREEN & RENEWABLE

KUA AINA

The Best!
• IN HALEIWA •
637-6067
• IN HONOLULU •
591-9133
AT WARD CENTRE

HALEIWA • TOKYO • HONOLULU • LONDON

Introducing one of our hidden delicacies to you!

PKB'S ENSAMADA
Check out our other ad in this issue for a super saver coupon!

PKB
"Da Best"

www.pkbsweets.com

ENSAMADA is a Spanish pastry which is fluffy, coiled and topped with a creamy and sweet butter topping!

Olakino Maika'i

(Good Health)

by Naty Camit Hopewell

Teen Suicide: Part I

Two years ago, Kahuku High School had two teens die by suicide and there were three attempts. These tragedies overwhelmed the close knit community of the Ko'olauloa School District. People didn't know what to think or what to do. In general, people do not like to discuss suicide for a variety of reasons. For many cultures, stigma is associated with suicide and it is easier to sweep it under the rug. In some religions, it is an act against God and its religious teachings. For most people, it's because they are unprepared to deal with it emotionally and intellectually. So, how do we overcome these barriers so we can prevent our teens opting for death when life is overwhelming?

Let's begin with some facts. First, you should understand that suicide in high school age youth is tragic but rare. Historically, about 17 youth (age 10-24 yrs. old) die of suicide in Hawaii each year. This rate is less than average mainland statistics. Suicide is the second leading cause of death for ages 10-19, after motor vehicle accidents. Approximately 10.8% of Hawaii students, grades 9-12, indicated that they had attempted suicide at least once in the past year. 78% of suicide victims were 17 yrs. or older. 65% of suicides were males and 35% females. Some statistics show Hawaii suicide rates in males at 77% and that male suicide rates are 3.3 times the female rate. However, suicide attempts are higher in females at 67%. The most common method utilized in suicides in Hawaii is hanging (88%).

What are some of the myths of suicide? 1) "Young people who talk about suicide never attempt or complete suicide." Actually, talking about suicide is a cry for help. 2) "Once a person is intent on suicide, there is no way of stopping them." Most people contemplating suicide are ambivalent until the end and want someone to intervene. 3) "All suicidal young people are depressed." While depression contributes to suicide, some people who are suicidal appear to be happier because they have found a "solution" to their problems.

Hale'iwa Vietnam Veteran gets final recognition after 48 years

By Jake Ng

Navy Airman Albert Kuewa, a 1959 Waialua High graduate, was on duty on the aircraft carrier USS Ranger in Vietnam on September 18, 1964. The carrier was supporting efforts in Vietnam in the Gulf of Tonkin.

At the time of the accident, Navy Airman Kuewa was never declared a casualty. Howtown shipmate, Benjamin Wahiwaha had died almost in-



ALBERT KALAHANA KUEWA
Waialua High Graduate - 1959

man Albert Kuewa, a 1959 Waialua High School graduate, was killed while on flight deck of the aircraft carrier, USS Ranger in Vietnam on September 18, 1964. The carrier was supporting efforts in Vietnam in the Gulf of Tonkin.

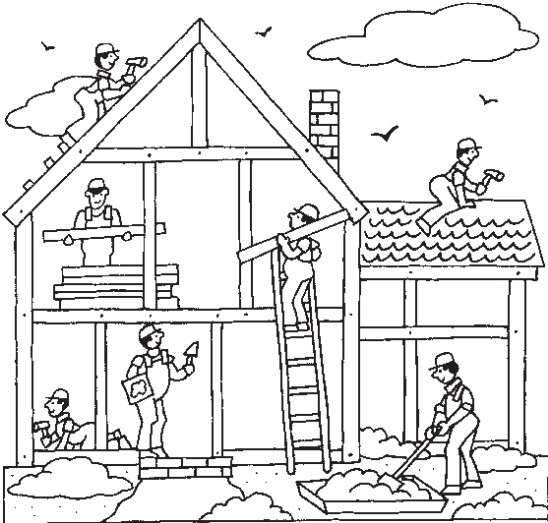
of his death, Albert Kuewa was never declared a war casualty. However, his hometown shipmate, Benjamin Wahiwaha had died almost instantly and his

body was returned home with his buddy, Airman Ishida at his side. Because of the "accident" Airman Kuewa's name could not be inscribed on the Vietnam Veterans Memorial Wall in Washington D.C. nor was his name on the Waialua Lions War Memorial Tower for Vietnam Veterans at Hale'iwa Beach Park.

Herein lays an incredible, unselfish, dedicated and a never-say-die individual effort to obtain approval for Airman Kuewa's name to be included with other Vietnam Veterans of the Vietnam war. For almost a half century, Ben Ishida took it upon himself to secure pertinent information, war documents, calculations and recalculations of the geographic location of the USS Ranger to prove that his buddy AN Kuewa was a victim of the Vietnam war effort. Ben Ishida fought long and hard, overcoming many obstacles along the way with letters and persistent personal calls and in the end he was able to receive positive help from Federal, military, and Congressional offices, especially with the support from U.S. Senator Dan Akaka's office.

Finally, his hard work paid off. On September 21, 2011, the Navy and the Department of Defense recommended and obtained final approval to include Navy Airman Albert Kalahana Kuewa's name to be inscribed on the Vietnam Veterans Memorial Wall in Washington D.C., the Hawaii State Capitol, and the Waialua Lions War Memorial Tower in Hale'iwa, where he was born.

On May 27, 2012, Sunday, at the Waialua Lions 65th Annual Memorial Day program at the Hale'iwa Beach Park commencing at 10:00 a.m., the Lions along with the Kuewa ohana and other dignitaries will unveil the addition of Albert Kuewa's name onto the Vietnam Memorial Plaque. The Governor's office will also present a proclamation to the Kuewa ohana to recognize Navy Airman Albert Kuewa, VIETNAM VETERAN. The public is invited to attend.



Attention!

- Contractors • Plumbers • Masons
- Electricians • Painters • Banks •
- Carpenters • Roofers • Landscapers
- Locksmiths • Lawncare-Gardening •
- Pool Builders • Maintenance
- Hardware Stores • Yard Service •
- Tree Trimmers • Housecleaners

PUBLICATION DATE:

July 25, 2012

DEADLINE: July 12, 2012

Don't miss our annual

HOME IMPROVEMENT EDITION

Advertising Deadline is Thursday, June 12, 2012

Call today for the best prices and page location

Advertising in the North Shore News puts your ad into 10,000 homes by direct mail. 14,000 total copies printed.

342-3969

Farmer & The Baker^{LLC}

(Formally Mokuicia Landscape & Nursery)



Trees, Palms & Shrubs

Contact Us: 808-341-1992

We've Moved

66-037 Kam. Hwy., Ste. 3
Haleiwa, next to Growing Keiki

Saccoccio & Lopez

ATTORNEYS AT LAW

Serving Haleiwa since 1984

Bankruptcy
 Personal Injury • Criminal Law
 Landlord/Tenant
 Traffic Offenses • DUI

Family Law
 Adoption • Custody • Divorce
 Paternity • Guardianship
 Deeds, and Wills

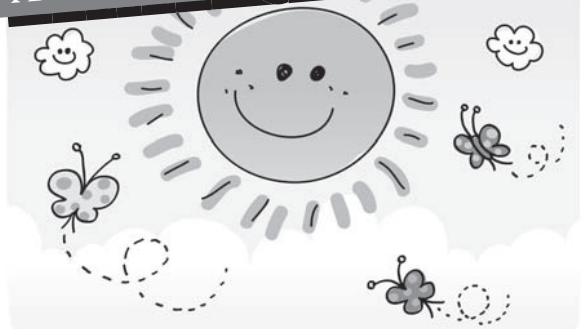
637-7611

VISA/MC Accepted



Paul & Nita

**PKB WISHES YOU
A HAPPY MOTHER'S DAY!**



OUR SUPER SAVER ENSAMADA SPECIAL!

**BRING IN THIS
COUPON TO
GET YOUR
DISCOUNT**

10% off (1) Ensamada
 15% off (2) Ensamadas
 Whopping 20% off (3)
 or more Ensamadas

Offer valid May 2 ~ 9, 2012. Visit us @ www.pkbsweets.com
 Cannot be combined with any other discounts or promotions.

Turtle Bay Resort turns 40 years old

The original hotel, Del Webb's Kuilima Resort & Country Club, opened 40 years ago in May of 1972. The Kuilima Resort underscored a change in the business climate of the North Shore at that time, emphasizing the beauty and appeal of the area as a unique destination while also providing employment opportunities other than labor-intensive pineapple and sugar cultivation. Today, Turtle Bay Resort plans to celebrate by offering local residents a variety of special events in May.

"This anniversary is certainly a significant milestone," said Danna Holck, Turtle Bay Resort general manager. "We intend to offer our guests and the community a variety of special offers. In doing so, we will acknowledge the uniqueness of the destination, Turtle Bay's position within this miraculous and organic place and four decades of memorable experiences residents have enjoyed here on Oahu's fabled North Shore."

As part of the "Turtle Bay is Turning 40" celebration, there will be a \$40 Golf Tournament on May 11, 2012. The tournament will begin with a Noon shotgun start on the Fazio Course, with lunch provided beforehand and prizes for the top teams, along with contests on the course. Entry fee is only \$40 and players can sign up at turtlebay.com.

On May 12th, the celebration continues with food and drink specials all day, entertainment by Eddie Cruz, Jr. at Hang Ten Bar a 4 p.m. and a 70s themed After Party at Surfer, The Bar with a dance and costume contest and plenty of other things to do in between.

The anniversary celebration will continue through the end of the year with new promotions for local residents.

Schedule of Events

Open to the public, employees of Turtle Bay Resort, friends, neighbors and guests.

May 10

3 p.m. Anniversary Blessing in the Lobby
5 p.m. \$40 Prix Fix 4-Course Dinner & T-Shirt at Lei Lei's

May 11

12 p.m. \$40 Charity Golf Tournament at Fazio Course
5 p.m. \$40 Prix Fix 4-Course Dinner & T-Shirt at Lei Lei's

May 12

6:30 a.m. 40% off A La Carte Breakfast Items at Palm Terrance
6:30 a.m. 40 Cent Coffee with Breakfast Item Purchase at Lobby Lounge
4:00 p.m. Ernie Cruz, Jr. Live at Hang Ten Bar
4:00 p.m. Silent Auction & 1972 Memorabilia in the Lobby



Guests enjoy fishing near Kuilima Point



Guests lounge poolside. The pool originally had a high diving board as seen in the background.

5:00 p.m. \$40 Prix Fix 4-Course Dinner & T-Shirt at Lei Lei's
5:15 p.m. Holunape Live at Hang Ten Bar
5:30 p.m. 2 for \$40 Lu'au Dinner Buffet at Leonardo's with Mixed Plate Live
6:15 p.m. Sunset Celebration Hula at Hang Ten Bar
6:30 p.m. \$40 4-Course Dinner at 21 Degrees North with Mossi Live
7:00 p.m. Weed Junction Band Live at Surfer The Bar
7:00 p.m. Kamaka Live at Hang Ten Bar
8:00 p.m. Kunoa Live at Hang Ten Bar
8:00 p.m. The Joe Green Band Live at Palm Terrace
8:00 p.m. Freedoms Progress Live at Surfer, The Bar
8:30 p.m. Mitchell Padeken Live at the Lobby Lounge
9:15 p.m. Ernie Cruz, Jr. Live at Surfer, The Bar
10:30 p.m. 70s Night After Party & Contests at Surfer, The Bar

THIS IS WHAT 40 LOOKS LIKE.

**MORE PHENOMENAL
THAN EVER.**

The resort opened its doors 40 years ago in May of 1972. We want to say thank you for four decades of memorable experiences here on Oahu's fabled North Shore.

Don't miss our
**TURTLE BAY IS
TURNING 40
CELEBRATION**
where you can enjoy
1972 prices, plus more!

May 11th:

- \$40 Golf Tournament with lunch, contests & prizes.

May 12th:

- food & drink specials all day
- Performances kick off with Ernie Cruz Jr. at the Hang Ten Bar, 4pm – Entertainment scheduled all afternoon in every outlet!
- 70's after party in Surfer, The Bar with dance and costume contests.
- A Silent Auction with a 1972 memorabilia contest.

New promotions & room specials revealed monthly throughout the end of the year. For all the info, go to our brand new site:

turtlebayresort.com



TURTLE BAY

OAHU'S FABLED NORTH SHORE



**A Message From
State Representative
Gil Riviere**

Attention bus riders! TheBus is planning service changes that could affect the Circle Island Routes as soon as June.

Presently, Route 52 is the Circle Island Route that starts in Ala Moana and passes through the North Shore to Turtle Bay. It then changes its number to 55 as it continues through Koolauloa and back to Honolulu. Route 55 is the Circle Island Route that starts in Ala Moana and heads through Kaneohe and then around the North Shore, changing its number to 52 at Turtle Bay.

The proposed changes would have Route 52 terminate at the Wahiawa Transit Center and buses would run every 30 minutes. Route 55 would also terminate at the Wahiawa Transit Center, but its frequency in both directions would be changed from every 40 minutes to hourly.

North Shore residents who now ride to Honolulu on Bus 52 would have to take 55 to Wahiawa and transfer to 52. The reason given for this change is because of the uncertainty of North Shore traffic

jams due to turtle tourism, surf contests, high surf and other events. Route 52 from Wahiawa to Honolulu will have increase reliability, but Route 55 will have less service.

At a recent Koolauloa Neighborhood Board meeting, many regular bus riders expressed dismay that the frequency would be reduced, particularly during mornings and evenings when the buses are standing-room only. They strongly suggest that peak hours should have more service, not less.

TheBus is seeking comments. Maps and route details are available online at TheBus.org. Look for the link under "Rider Alerts". Direct questions, concerns and comments to TheBus at 768-8365 or email thebus-stop@honolulu.gov

My last article regarding possible Laniakea traffic solutions generated plenty of comments and ideas. Thanks to everyone who took time to write and call. Unfortunately, the process established by the Department of Transportation is moving very, very slowly and there is little progress to report. It should be said, however, that the volunteers on the task force are committed to moving the project forward more quickly and we are all disappointed with the slow schedule.

Information about this year's Legislature and other district related news is always available at GilRiviere.Info. Feel free to share your thoughts with me by calling 586-6380 or sending me an email at RepRiviere@Capitol.Hawaii.Gov. Mahalo.

THE RETURN OF THE VERY POPULAR NORTH SHORE CANOE CLUB FUNDRAISER

20th Annual

Eggs Benedict Breakfast & Auction

Surfboards • Clothing • Bikes • Dinners • Artwork
CDs • Fishing Charters • Gift Certificates ... much more!

Visa & Mastercard now accepted for auction items

Saturday, June 2 • 7:30 a.m. to 10:30 a.m.

at Hale'iwa Joe's

Now only \$10.00! Call for advance tickets 753-7974.

Tickets also available at the door

www.northshorecanoecub.com



20 YEARS WORLD FIREKNIFE

MAY 9-12, 2012 *Championships*

EVERY YEAR, IT GETS JUST A LITTLE HOTTER.



Witness two decades of daring.
For tickets, call 293-3333. Annual Pass holders get in free with a reservation.



WorldFireknife.com

Permit application deadline for surfing events at North Shore city beaches

The Department of Parks and Recreation announces that Monday, May 14 is the deadline for submitting permit applications for surf, body surf, body boarding, windsurfing, paddleboard surf, or wave skiing events at Ehukai Beach Park, Mokuleia Beach Park, Hale'iwa Ali'i Beach Park, Sunset Beach Park, and Waimea Beach Park. The applications pertain to events scheduled during October 1, 2012 through September 30, 2013.

A completed Application for Use of Park Facilities, Applications Supplement, and Event Data Sheet for each event must be completed and mailed or hand delivered to the Department of Parks and Recreation, 1000 Uluohia Street, Suite 309, Kapolei, Hawaii 96707 by close of business on May 14, 2012. Applications that are faxed or emailed will not be accepted.

Applications may be obtained from the Parks Permit Section, 650 S. King Street, Honolulu, or Hale'iwa Ali'i Beach Park, 66-167 Hale'iwa Road, Hale'iwa.

Parks officials said late applications, incomplete applications, or applications requesting more than four competition days will be placed on a waiting list until all scheduling conflicts have been resolved and will be processed in the order that they are received.

For more information, contact Ms. Laura Whittaker, Waialua Complex Supervisor, at 637-4106 or email lwhittaker@honolulu.gov.

Leeward Job & Career Fair

Tuesday, June 12, 2012
from 10 a.m. to 2 p.m.

The Salvation Army Kroc Center Hawai'i
91-3257 Kualaka'i Parkway in 'Ewa Beach



Council Chair
Ernie Martin
Serving You in District 2

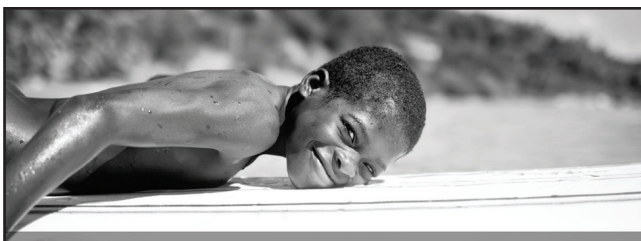
Meet Asa Chun. He is the new permanent full-time Director at the Sunset Beach Recreation Center. On the job since April 16, he is the newest employee of the City's Department of Parks and Recreation on the North Shore. Asa comes from a local family that has called Hale'iwa home for several generations. He attended Hale'iwa Elementary School and graduated from Waialua High School in 2003. He went on to graduate from Washington State University four years later with a degree in Kinesiology which is the study of how human muscles and other bodily systems work, develop, and interact. Kinesthetics includes exercise science, anatomy, sport psychology and health and wellness. Asa's focus was on recreation with an emphasis on sports organization and management.

The City is fortunate to have hired a young man with his qualifications as well as his refreshing enthusiasm for the job. Asa has worked as a contract employee with the Parks Department since 2005 and is well acquainted with the summer fun program.

He is also familiar with other activities of the Center and the responsibilities of his new position. The community has been anxiously awaiting a new Director at the Rec Center, particularly as we approach the summer months. Asa is a most welcomed addition to the Parks Department's management and staff serving the North Shore.



On-line registration for Summer Program 2012 non-fee classes ended on April 29th but walk-in registration for Summer Program 2012 classes will be on Saturday, May 12 from 9:00 a.m. to 12:00 noon and Monday, May 14 from 2:00 p.m. to 5:00 p.m. at the Sunset Beach Recreation Center and Tuesday, May 15 from 2:00 p.m. to 5:00 p.m. at the Sunset Beach Neighborhood Park. Summer Fun runs from June 12 to July 25, 2012. For further information regarding registration and activity information, or to check on the schedule of events at the Sunset Beach Recreation Center, you can visit the Parks Department's web site at www.honoluluparks.com and select the Activity Detail page. For specific questions or more detailed information regarding the Summer Fun Program, you can also send an email to parcs@honolulu.gov or you can contact the new Director, Asa Chun at 638-7213.



GOT SURFBOARD?

The ONCE A MONTH CHURCH has assisted the launching of a Christian surf ministry in Haiti. We have pledged our first delivery of 25 good used surfboards. Can you help us reach our goal?

Got a dusty surfboard laying around? Donate it to us and we'll ship it to Haiti. Any size OK.

Call 342-3969 for more information. Mahalo!



Got Surfboard Update

Mahalo to those who have sacrificed and generously donated a surfboard to our SURFHAITI.org project. To date we have received 9 surfboards. Some are big and some are short. Two look brand new and most are well worn and waxed crusty. When we receive 12 boards we will pack them up and send them to anxious young wannabee surfers in Haiti. SURFHAITI.org is a new non-denominational Christian ministry supported in part by the Once A Month Church in Hale'iwa. Our first major goal is 25 surfboards. For more information call 342-3969.



Hawaii's Best Mexican

Restaurant & Margarita Bar

- DAILY SPECIALS -
 LARGE PARTIES WELCOME

Island Fresh Fish Tacos & Premium Margaritas

Open Daily 9:30am-9:30pm Breakfast, Lunch & Dinner

Located in the North Shore Marketplace
 66250 Kamehameha Highway, Haleiwa, Hawaii 96712
 637-3059 www.CHOLOSMEXICAN.com

KVA Farmer's Market
(Kahuku Village Association)
Coming Soon . . .

- Vendors wanted for:**
- **Farmer's Market** ▪ **Craft Fair**
 - **Swap Meet**

When: Saturday, May 26, 2012
From 7:30 a.m. - 11:30 a.m.
Where: KVA Building -
across from the Old Kahuku Mill

For more info call Lisa or Debbie
Mon-Wed-Thurs-Fri: 8 a.m.-4 p.m.
@ 293-4488



You're Invited

Do You Have Social Security Questions?

Join us for our presentation Social Security: *Your Questions Answered*
 We'll discuss:

- * How does Social Security fit into my retirement income plan?
- * When should I start taking benefits?
- * What about taxes?

WHEN: Thursday, May 13 at 630pm (refreshments will be served)
WHERE: Waialua Community Assoc./66-434 Kam. Hwy., Hale'iwa

CALL US AT 808-373-9977 by May 10th to reserve your seat for this event

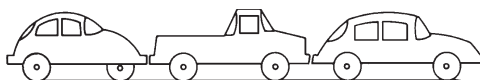


Brandon E Wallis
 Financial Advisor
 549 E Halemaamau Street C-2
 Honolulu, HI 96821
 808-373-9977

Edward Jones, its employees & financial advisors cannot provide tax or legal advice. Please consult your attorney or qualified tax advisor regarding your situation.



CAR WASH !



Starting at \$5

Saturday, May 5, 2012

8am to 2pm

Waialua Community Assoc. in Hale'iwa

Proceeds to benefit the North Shore Food Bank

Sponsored by the Once A Month Church

(to volunteer or donate call 342-3969)

OK to bring food donation too

We Pay You
\$100
CASH & FREE
TOWING
 for unwanted vehicles
 (complete)
636-7183
North Side Towing

DRAFTPLANS HAWAII

- Over 10,000 floor plans & blueprints available for purchase online. Gather ideas for your own design.
- Drafting** Service available for new home designs, additions, renovations, decks, fence, rock walls, etc.
- Free** property specifications & title search info.

www.draftplans.com

Call for free estimates:
265-0035



The Waialua High and Intermediate School Band
 Sunday, May 6th
 4 p.m.

May Concert
 in the Park
 At the Waialua Bandstand

Come bring your lawn chairs and enjoy their program.

Waialua - The Saga of the North Shore

Chapter 8 - Hi`iaka

Nathaniel B. Emerson, was born at the Waialua Mission on July 1, 1839. His was likely the first haole birth on the North Shore during modern times. Unlike most of the other missionary children, he grew up amongst the Hawaiian community and was therefore a native speaker. His biography includes getting wounded at Gettysburg, becoming a medical doctor and marrying the girl who was to become Hawaii's first woman physician. He was an Inspector of Leper Stations and later held the post of Police Surgeon. He died at sea in 1916. The reason I mention him now is that this Waialua native son wrote and published numerous articles and three books. His two most popular volumes are Unwritten Literature of Hawaii: The Sacred Songs of Hula (published in 1909) and the book of interest to us now, Pele and Hiiaka: a Myth from Hawaii, (1915).

That myth tells us that once Pele had established herself on the Kilauea Volcano and Hi`iaka had reached maturity, the elder sister sent the younger on a mission to fetch the love of her life, Lohiau, from his home on Kaua`i and deliver him to her. The maiden Hi`iaka's journey was filled with adventure and quite a few battles with deadly enemies, all of which she won. What concerns us here is what she is said to have uttered as she first witnessed the huge surf of the North Shore. Coming down from Wahia-wa, near the stones of Kukaneloko, at Kehuahapu`u, standing atop to the ahu of Hapu`u she chanted:

O Waialua, ka leo nui,

Waialua, land of the loud voiced sea,

Ua lono ka uka o Lihu`e,

Heard from the upland Lihu`e,

Ke wa la Wahia-wa, `e.



By Kalewa

The voice reaches Wahia-wa.

Kuli wale. kuli wale i ka leo.

Our ears are stunned by the voice.

He leo no ke kai, `e!

The very voice of the Ocean!

O Waialua, la`i eha, e,

Waialua has a fourfold calm,

Eha ka malino lalo o Wai alua.

That enfolds and broods over the land.

She proceeded to Kaua`i and eventually began the journey back to her sister, with Lohiau in her canoe. They landed at Moku-

leia and stopped to visit with one of Pele's relatives, who had settled in the neighborhood many years earlier. Following the family reunion, she chose to go to Waianae, thence Waikiki before returning to the Big Island. The land route was to climb the pali behind the fields of Kealia and Kawaihapai (the west end of Dillingham Airfield) and over that ridge towards where we call Yokohama Beach. If you have made the hike up Kealia Trail on a hot summer day you might relate to the chant Hi`iaka recited on the day she made that climb:

Kunihi Ka`ena, holo i ka malie,

Steep Ka`ena's profile, climbing through the calm,

Wela i ka La ke `aio o ka pali

Hot the Sun, like a wave on the pali.

`Auamo mai ka La o Kilauea.

Like carrying the heat of Kilauea.

Ikiiki i ka La na Ke-awa-ula,

Stifling the heat of the red awa.

Ola i ka makani Kai-a-ula Kohala-lele,

Refreshing the sea-breeze of Kohala-lele.

He makani ia no lalo.

That wind from below.

Thus departed Hi`iaka.

SIX SPECIAL NIGHTS

MONDAY

\$2.50 BEER
BOTTLES & DRAFT

TUESDAY

\$5.00 OFF PIZZA
REGULAR OR LARGE

WEDNESDAY

SALAD NIGHT
1/2 OFF SALADS

THURSDAY

\$3.50 NIGHT

\$3.50 SLICES,
SALADS, MAI TAI'S,
WINE & BEER



FRIDAY

\$4.50 NIGHT

\$4.50 SLICES,
SALADS, MAI TAI'S,
WINE & BEER (or less)

FRIDAY NIGHT \$6.95 BURGER & FRIES

Dine In Only - 4:00 PM Until Closing - Haleiwa Shopping Plaza - 637-5095

PLUS \$2.00 Off with this Coupon

Some Restrictions Apply. See Restaurant for Details.
When Ordering Regular Priced Items. Good Anytime. One Coupon Per Person.
Can Not Be Combined with Other Discounts. Expires 06/30/2012.

Support Our Motorcross Keikis!

Join us on Saturday, May 26th
from 9-3 @ Sunset Beach Christian School
for our fundraiser

CAR WASH!

*All proceeds will benefit our keiki who qualified
for the Loretta Lynn's MX Regional Championships
in California!*

Hope to see you there!
For more info call 234-4506

BULLETIN BOARD



Featuring the largest selection of certified organic produce on the North Shore. No panic...ours is organic. Open 7 days. Mon.-Sat. 9am-6pm. Sun. 9am-5pm

66-445 Kam. Hwy
Haleiwa, Hawaii 96712
Next to the Post Office
808-637-6729 • 808-637-1922 fax

HOLOHOLO MOBILE SCREEN SERVICE



- *new window installation
 - *new screens/re-screens
 - *pet proof screens
 - *jalousie repairs
 - *porch enclosures
 - *sliding/swinging screen doors
 - *pet grills & doors
 - *solar screens
 - *screen door roller repair
- FREE ESTIMATES**
808-783-8764
www.OahuScreens.com

N-C PLUMBING & SUPPLY



Cont. Lic. No. C-8913

- RESIDENTIAL & COMMERCIAL SALES & SERVICE
- CONTRACTING & DESIGN • HOME PLUMBING SERVICE
- PLUMBING FIXTURES, HEATERS • FREE ESTIMATES

Nestor P. Calilao (Owner) Bus: 637-8662
P.O. Box 769 Res: 638-5157
Waiialua, HI 96791 Cellular: 372-8718
email: nncplumbing@hawaii.rr.com



Specializing in vegetarian foods, vegan foods, whole foods, organic food. Wheat free, dairy free, raw foods, gluten free. A complete selection of natural foods for 37 years. Make earth day, everyday. Open 7 days. Mon.-Sat. 9am-6pm. Sun. 9am-5pm

66-445 Kam. Hwy
Haleiwa, Hawaii 96712
Next to the Post Office
808-637-6729 • 808-637-1922 fax

Munden Design & Build

Lic.#BC19632

Design • Plans • Permits • Construction
Additions & New Residences
808 391-8616

Providing quality work since 1978

NORTH SHORE AUTO SALON

66-540 Kamehameha Hwy., Haleiwa
(Right behind TESORO gas station)

Wash & Wax, Vacuums, Remove Waterspots
Interior Shampoos, Polish Rims, Polish Motorcycles, etc

\$5 OFF with this ad/ Package A thru E
312-8511

northshoreautodetailsalon.com northshoreautosalon@yahoo.com

FMS

Financial Management Solutions
Income Tax Services, Comprehensive Financial Services, and Insurance Planning

Complete Financial Services are available on-line.
Please visit our website for more details.
Virtual Office Address:

www.FMS-USA.com

Office:1-855-753-7750 • Fax:1-866-307-3330 • Email: amber@fms-usa.com

Amber M. Dolo, Registered Representative, H.D. Vest Financial Services, Inc. Securities Offered Through H.D. Vest Investment Services SM, Member SIPC A non-bank subsidiary of Wells Fargo & Company, 6333 North State Highway 161, Fourth Floor, Irving, Texas 75038, 972-870-6000

HAIR SPECIAL

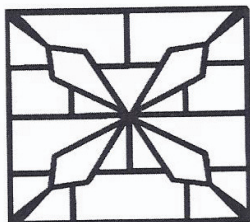
Full Highlight and Cut \$100.00

GINA WALKER

Hairdresser to the stars
from Malibu, CA

Senior Stylist & Color Master
20 years experience

North Shore Salon & Spa
in Haleiwa Town 808-375-3984



GROVER MASONRY

Rick Grover
(808) 983-9331 cell
(808) 638-8120 office
rick@grovermasonry.com

License # C-18302

LIC. #AC 18275

COWPER CONSTRUCTION

GENERAL ENGINEERING CONTRACTOR

Full Service Sitework
Contractor

Septic Systems & Tanks
25 yr. exp.

Michael Cowper 638-7200
cowperhawaii.com



Letters to the Editor

Traffic at Laniakea and Chun's Reef

Dear Editor:

Let's take a look at the traffic problem from another perspective: What do almost all other beaches have that these two popular beaches lack? Turtles, waves, and beautiful views are everywhere. Parking and pedestrian safety are the issues at Laniakea and Chun's Reef. Parking on the makai (ocean) side of the highway is what is missing. Almost all other beaches have makai side parking. This single factor is the key to both pedestrian safety and traffic flow.

Real solutions are always simple: Put the highway where the parking lot is now, and put the parking lot where the highway is. Just have them "trade places" between the bridge at Laniakea and the bridge at Chun's Reef. A third lane for left turns could help, if you like.

I've observed 4 fire hydrants and about a dozen utility poles would need to be relocated, and about a half mile of highway would be created right next to where it is now. A concrete wheelchair ramp to the beach and a bike lane on the mauka side would be nice. If we need to spend a lot more money, we could move the bridges, but it's probably not necessary.

Let's keep it simple.

Mahalo,
Steve Rich
stevehawaii@yahoo.com

State should "Cease and Desist," not the Farmer's Market

Dear Editor:

It's absolutely amazing to most of us here on the North Shore that after three and a half years of Sunday only operation, that the Hale'iwa Farmer's Market, near Kam Highway, is suddenly illegal. This harmless little corner of a dirt parcel is only doing business for 4 hours every Sunday, but it continues to THRIVE. Tourists and locals alike love what is being sold there. We rarely miss a Sunday. It helps our local economy and above all, our farmers and local merchants. The D.O.T.'s decision to close "her" down is insane! What are they thinking? The D.O.T. should spend their time fixing potholes. Some other government authority should spend time fixing the "homeless problem" that blights the landscape, 378 feet away at the beach park. Where are the priorities? Please leave this market alone.

Jack Niendorf
Waiialua

Bus route changes nonsense

Dear Editor:

I live in Wahiawa and like many people rely on the bus because I do not have a car. I travel to Hale'iwa, Waiialua, Sunset Beach, and other North Shore places on the bus at least one day, sometimes both, each weekend, and do so most holidays as well.

Normally the ride takes about 20 minutes to Hale'iwa and less than 40 minutes to Sunset Beach. Proposed changes to the bus route that will affect the North Shore will eliminate bus service from Wahiawa to Hale'iwa and the rest of the North Shore. The only bus route will be in one direction along the North Shore, so that if I want to go from Wahiawa to Hale'iwa, I will have to take the one-way trip around the island, a trip which takes approximately 4 hours.

At the same time, the 52 route will be altered to service Wahiawa Heights, a small area that already has a bus route that the 52 will duplicate. So I, and countless others, will, in effect, be cut off from traveling to and along the North Shore.

How anyone can think that these changes make sense, I would like to know.

Anne Sabalaska
Wahiawa

CASH


FOR YOUR

ROLEX

GOLD & DIAMONDS

TODAY

**OUR
BUYERS
ARE
HERE
ON THE
PREMISES**



**FROM
OUR
RETAIL
AND
COLLECTOR
DIVISION**

TOP DOLLAR

**FOR ROLEX AND OTHER
SWISS WATCHES, DIAMONDS, GOLD**

ALL THIS WEEK

CALL 943-6210

**PACIFIC DIAMOND
WATCH WHOLESALERS**

1356 Kapiolani Blvd.



CLASSIFIEDS

The North Shore News is published every other Wednesday and mailed free of charge to all North Shore homes and businesses. Extra copies may be obtained at our office.

PRESS RELEASE POLICY: Submit press releases in person or by fax, mail or email to Editor, North Shore News, P.O. Box 1117, Haleiwa, HI 96712. Please type your releases and keep them shorter than 200 words unless they are of an unusual news interest. Releases should be viable news stories and are published on a **space available basis only**, with priority given to those received in our office first. You may attach photos. We are not responsible for the return of any photos. All materials are submitted at owner's risk. We reserve the right to edit and/or refuse all submissions including advertising.

EDITORIAL POLICY: We welcome articles and letters from our readers. Letters to the Editor are published on a space available basis only and preference is given to shortness of length, and quality of content. We prefer to run not more than one letter, per person, per 6 month period. Letters subject to edit.

Views expressed by our contributing writers and advertisers do not necessarily reflect the view of the management and staff of the North Shore News. All rights reserved. Reproduction in whole or part without permission is prohibited. © 2012.

PUBLISHER/EDITOR
RON VALENCIANA

TYPOGRAPHY
DOWNTOWN GENERAL STORE
BOOKKEEPING & CLASSIFIEDS
LINDA SEYLER

CONTRIBUTING WRITERS
RON VALENCIANA,
NATY HOPEWELL
STATE SENATOR DONOVAN DELA CRUZ
CITY COUNCILMAN ERNIE MARTIN
STATE REPRESENTATIVE GIL RIVIERE

For Advertising Rates,
call
637-3138

♥♥Need a minister for a North Shore wedding? Hundreds of knots tied for happy couples on Oahu. Simple beach-side ceremonies to formal church or chapel services. I'll make your special day an extraordinary memory. Call & leave clear message with phone number & possible date, time & place. 342-3969. Also: Vow renewals, house blessings, baby luaus.

PAUMALU ELECTRIC
David C. Hancock
638-9054 / Lic#C18074

SHORE ELECTRICAL SERVICE
New Const-Remodels
638-0049 / Lic#C20777

LGR Construction
Remodel • Repair • Design
Drafting • Painting • Small Jobs
Affordable rates. 343-4453/Lic#26759

Dog/Cat Nail Trimming
at your home only \$15.00
Call Julie 637-5395

Aloha Computer
PC Repair/Virus Removal
Fax/Copy/Internet Access
372-2667 or 237-4558

Lawn Care For You
Mowing, Trimming, Light Hedging
Call Thomas 637-5839

Ross McGerty BC24080
349-6359 • 637-9539
From Waialua to Sunset
Make Me the First Call
for Home or Rental Repairs
or Renovations

EXPERT ELECTRICIAN
Fans, emergency services, etc.
Jim Richards 371-9369

PARADISE PLUMBING INC.
New Const • Repairs • Remodels
808-368-1473 / Lic. 29856

BEACH PLUMBING & ROOTER
Over 30 years experience
Call Larry 637-6400

Handyman Services
Remodeling, Carpentry, Floors,
Concrete, all parts of Construction
Call Bob "The nicest guy in the
business" Ph. 282-2812

Haugan Construction LLC
Build & Repair • Big & Small
Let's Talk
Steve 542-9269

Nutrition Expertise
Cooking advice & demos
Whole foods nutritionist
Crystal Bossola 954-9495

HARVEY'S REPAIR, LLC
24 hrs Towing Service
Specializing in opening
locked car doors
Call any time 478-0333

BOW WOW BUNGALOWS
Licensed Boarding Kennel
North Shore, Oahu
Reasonable Rates
Ph. 637-2562
These Dogs Have Fun!

PAINTING
INTERIOR, EXTERIOR
FREE ESTIMATES
OAHU PRECISION PAINTING
LIC #31602
SKIP WUNDERLICH 220-9083

LEARN TO SWIM
AT THE
HAWAII SWIM
SCHOOL
ON THE NORTH SHORE
Developing swimmers since 1982
Haleiwa Rd. at Smiley Place
637-4863

BIKRAM YOGA
See our new studio, anti-
microbial, anti-bacterial
carpet and more!
Please call for class schedule
637-5700

North Shore Pumping
Cesspool & Septic Pumping
Complete Plumbing
Services, new & repairs
Lic. & insured #25567
638-0900 • 291-5089

N.S. Property Maintenance
Power wash, painting int/ext,
deck repairs, extensions,
fences, gates,
carpentry & remodels.
Maintenance, lawn & yard.
Chris 381-5213/638-0659

SHIATSU • LOMI
Aromatherapy
Milica Barjaktarovic
Lic # MAT8348
351-0848
HumanRemodeling.com

SEPTIC SYSTEM
QUESTIONS?
Free Initial Consultation
Bear Engineering
Nathan M. Toothman P.E.
(808) 754-3579
www.BearEng.com

Modern Dance Classes
NS Arts Center Waialua
6 p.m. beg. & 7 p.m. int.
For more info:
www.Facebook.com/
NSModernDance
390-0774

Next Issue - May 16, 2012
Deadline Date-May 3, 2012

SUBSCRIPTION RATES

If you live outside the North Shore area on Oahu, neighbor islands, or the mainland, you can subscribe to the North Shore News. Our annual subscription rate is \$35 for 25 issues delivered by standard bulk mail (2-3 weeks), or \$55 for 25 issues delivered by first class postage (3-5 days). Call our office for payment information at (808) 637-3138.

HOW TO CONTACT THE NORTH SHORE NEWS

Letters to the Editor, and other items submitted for publication consideration may be sent to us via:

MAIL: P.O. Box 1117, Haleiwa, HI 96712

E-MAIL: NShoreNews@aol.com

FAX: (808) 637-8862

PHONE: (808) 637-3138

CLASSIFIED ADS

hawaiiweddingminister.com

342-3969

31 years experience

Offshore Plumbing, Inc.

Commercial • Residential
• Septic • Solar • Design

Mike 630-1407

Steve 371-3451

Lic #C28113

Fax 638-9022

offshoreplumbing@yahoo.com

BOBBY'S BODIES

Tuesday evenings at 5:00 p.m.

• Body Toning

Friday mornings at 9:00 a.m.

• Cardio Pump/Fat Burner

For more info: call Bobby, owner of BOBBY'S BODIES at 637-4150

Lisa Carley Skin Care

637-9400

lisacarley.com

67-292 Goodale Ave. #104
Waialua Shopping Center

ANGELS PLUMBING

Repairs
Remodeling
Renovation

638-7878

Lic. #C12004



THE LAWN RANGER

Lawn Maintenance
no yard too hard
no lawn too far gone
We mow betta
258-6439 Dan Fatchett

Marianne Abrigo, Properties

Specializing in -
North Shore
Real Estate

Ask for our list of available properties and/or a free market analysis.

Marianne M. Abrigo

"Realtor since 1974"

Office

637-3511

Fax

637-0777

Email

mabrigo222@aol.com

GERMAN CAR SERVICE

Professional-Qualified

Technician

Call Gary

637-6800

HELP WANTED

BUSSERS/SERVERS

Pizza Bob's in Haleiwa is looking for BUSSERS/SERVERS. Experience preferred. Apply in person at 66-145 Kam. Hwy.

COOKS/KITCHEN HELP

Pizza Bob's in Haleiwa is looking for kitchen personnel. Experience preferred, but will consider training the right people. Apply in person at 66-145 Kam. Hwy.

Graphic Artist/Web Designer/ Part-Time Secretary (3 positions)

For North Shore office; P/T Secretary must have computer skills and high speed internet access. Call 638-7189 or fax resume to 638-7643.

Farm seeking responsible hard working individuals. Work included but not limited to harvest, prune, clean & prep w/ flexible hours. Leave a message. Call 707-200-1375

Retail Sales Surf & Sea

Hawaii's Ocean Sports Headquarters is always looking for hard working, energetic people to become a part of our sales team. Good pay, bonus, benefits. Ocean sports experience and/or bilingual a plus. Apply in person daily 9am-7pm 62-595 Kam. Hwy., Haleiwa

FOR SALE

Like new 88 - Key Hammer Action Premium Stage Piano by M-AUDIO. Includes carrying case with wheels, stand, sustain pedal, AC plug, user guide (unopened) and CD software. Paid new at Easy Music for \$1000, asking \$500 firm. Used 2X. Call 342-3969 from 8am to 10pm.

Save Sea Turtles Use Reusable Bags

www.b-e-a-c-h.org

MISCELLANEOUS

TAP DANCING

Monday 6:30 p.m.

great fun, great exercise, and great for the gams!
north shore art center
more info 637-2562

REUNIONS

The NSN is happy to publish your school or family reunion Free of charge.

Email your announcement to NShoreNews@aol.com.

OFF da ISLAND

Are you leaving Oahu on vacation or business? Do you live on a neighbor island, the mainland or foreign country and subscribe to the North Shore News? Try send us a photo of someone in front of a sign or landmark holding a copy of the NSN. Email your photo along with the person or persons' name, community of residence, telephone number and photo location to: NShoreNews@aol.com. Or, mail to OFF da ISLAND Photo, North Shore News, P.O. Box 1117, Hale'iwa, HI 96712. We cannot return photos so please send us a copy. Photos received become the property of NSN. Preference and priority will be given to emailed photos.

FOUND

Blk & Wht Cat

in Pupukea

(possibly "Buddy")

Lost cat from tsunami)

Sadie 638-7458

Support Our Motorcross Keikis!

Join us on Saturday,

May 26th from 9-3

@ Sunset Beach Christian School for our fundraiser

CAR WASH!

All proceeds will benefit our keikis who qualified for the Loretta Lynn's MX Regional Championships in California! Hope to see you there!

For more info call 234-4506

MAHALO!

Turtle Bay Resort

Housekeeping Ohana

"You are all loved & appreciated" for your constant generosity to the Once A Month Church and our needy neighbors & families.
Pastor Ron Valenciana

Keep it Country To report ILLEGAL VACATION RENTALS

call 768-8159 or 768-8118
You will remain anonymous
Illegal Vacation Rentals
are ruining the North Shore
www.savenorthshoreneighborhoods.com

Business Services Center

Fast & convenient fax, copy, scan, computer/internet, laminate, etc.

Across from Haleiwa post office.
North Shore Chamber of Commerce
637-4558 or 342-8557

North Shore Farmers Markets

Haleiwa: 9 a.m. to 1 p.m. Sundays, at traffic signal on the old Kamehameha Hwy at the bypass road.

Waialua Sugar Mill: 8:30 a.m. to noon Saturdays & Wednesdays 4:40 p.m. to 7:00 p.m.

North Shore Country Market: 8 a.m. to 2 p.m. Saturdays, Sunset Beach Elementary School, 59-360 Kamehameha Hwy.

Lai: 11 a.m. to 2 p.m. June 24, July 8 and 23, Brigham-Young University-Hawaii, 55-220 Kulanui St.

Art Classes for everyone

at North Shore Art Center and Jaymarzart Gallery
Come Play and Come Teach weekly classes adults/children learn any medium, your style, your pace oils, pastels, water colors, fiberarts, clay, mosaics and more!!!

Book at ART PARTY adult or children.

For more info call jaymarr@637-2562

IGREJA EVAN. BRASILEIRA

Domingos 10:00 am

Quartas 7:30 pm

Sextas-Culto de Oraçao 7:30 pm

Voce e o nosso convidado especial

Behind Hale'iwa Post Office
637-5566

Pastor Luiz • 638-2212

BEACH CLEAN UP

Chun's Reef - 10 a.m.

637-2211

Last Saturday of every month
adoptabeachhawaii.org



MALAMA MARKET HALEIWA:
OPEN DAILY 7 AM-9 PM
808.637.4520

MALAMA MARKET MAKAKILO:
OPEN DAILY 6 AM-10 PM
808.672.9955

Valid Dates:
5/2/12-5/8/12

Fresh Strawberries 2/\$7
1 lb.



Diamond Bakery Soda Crackers or Saloon Crackers \$6.99



Spam Luncheon Meat 2/\$5
Selected Varieties, 12 oz.



Aquafina 24/500 ml. or O.N.E. 1 Ltr. \$3.99



Fresh Chicken Drumsticks, Thighs, Whole Legs or Picnics Value Pack \$1.79 PER LB.



Diamond Bakery Royal Cream Crackers 2/\$7
Selected Varieties, 8-9.5 oz.

Surf Powder Laundry Detergent \$11.99
Selected Varieties, 156 oz.



Chef Made Fresh Green Salad \$6.49 EACH
Assorted Varieties



Extra Large Shrimp, 26/30 ct. \$8.99 PER LB.
Previously Frozen



Snuggle Fabric Softener \$2.99
Selected Varieties, 64 oz.

Dreyer's Ice Cream 2/\$7.50
Selected Varieties, 48 oz.



Huli Huli* Chicken Whole Roaster \$7.99 EACH
*Used with Permission



Gatorade 4/\$5
Selected Varieties, 32 oz.

SoBe Lifewater 20 oz. or O.N.E. Splash 8.5 oz.



Red Baron Pizza Singles 3/\$9
Selected Varieties, 8.8-12 oz.

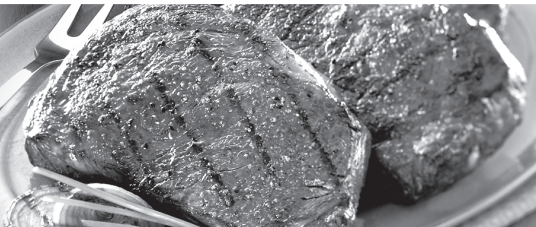


Budweiser, Bud Light, Coors, Coors Light, or Miller Lite 30 Pk. Cans \$23.99



THURSDAY

INCLUDES:
7-8 oz. Steak
Rice • Tossed Salad • Drink



Grilled Steak LUNCH \$6.99

Hawaii Beverage Fee of 1¢ per can or bottle will be added to purchase price at checkout. An Additional Hawaii Deposit fee of 5¢ will be charged for all specially marked beverage containers.

Limit five units (mix/match) per purchase, unless otherwise specified. We reserve the right to limit quantities. No sales to dealers. Prices plus applicable state tax. Hawaii EBT cards welcomed.