



“E Ala Na Moku Kai Liloloa”

Survival Training

Kahuku High JROTC recruits go through survival training at Cadet Leadership Challenge. See story on Page 16.



NORTH SHORE NEWS April 6, 2011 VOLUME 28, NUMBER 7



Malaekahana bike & pedestrian path blessed & open

More than 500 people attended the dedication and maile untying ceremony today for the Malaekahana bike & pedestrian path near Gunstock Ranch Road.

An Envision Laie project, the meandering path is nearly a mile and a half long and sits about 15 feet from the highway. The 8-foot-wide path runs between landowner and primary sponsor, Hawaii Reserves, Inc. (HRI), the Laie Community Association (LCA), the Kahuku Community Association (KCA), Operating Engineers Local Union 3, and community residents and businesses.

Along with these organizations hundreds of people representing families, church groups, and communities throughout the Koolau Loa region volunteered spending several Saturday mornings to help complete the project.

“Many of the volunteers gave their time regularly and worked tirelessly over the six month period of construction,” said Kevin Schlag, LCA Board member and volunteer coordinator.

PRE-SORTED
U.S. POSTAGE PAID
STANDARD
Honolulu, Hawaii
Permit No. 1479

66-437 Kamehameha Hwy., Suite 210
Hale'iwa, HI 96712

PROUDLY PUBLISHED IN
Hale'iwa, Hawai'i
Hometown of
Miss Hawaii
Jalee Kate Fuselier



OFF da Island at the Golden Gate Bridge

Waialua residents Jim & Steph Lawson did a stand up paddle from Oahu to San Francisco. NO, not really! They did a road trip from Seattle to San Francisco recently and enjoyed a SUP under the majestic Golden Gate Bridge. They packed a copy of the NSN to remind them of all the good times back on Oahu's beautiful North Shore. For more info on our OFF da Island photo campaign please turn to page 23.



Subscribe
to the
North
Shore
News

The North Shore News is delivered free to residents in Moku-leia, Waialua, Haleiwa, Kawailoa, Waimea, Pupukea, Sunset, Kawela, Kahuku, and Laie. A subscription is available for other cities on Oahu, Outer Islands, or Mainland U.S. or Alaska for just \$27.00 per year for 25 issues for delivery by standard bulk mail (2-3 weeks Mainland) or \$48 delivered by 1st class postage (3-5 days). You may subscribe by using check, money order or credit card (VISA, MC, AMX).

Mail North Shore News to:

Recipient _____
 Address _____
 City _____
 Credit Card # _____
 Expiration _____

Return this form with payment to:
 North Shore News
 66-437 Kam. Hwy. #210
 Haleiwa, HI 96712

CLIP



Cholo's Homestyle Mexican Restaurant & Margarita Bar



Island Fresh Fish Tacos
 Dine-In Take-Out Burritos • Quesadillas • Nachos
 Enchiladas • Fajitas

637-3059

OPEN EVERY DAY
 10:30 a.m.-9:30 p.m.



"Hawaii's Best Little Mexican Restaurant"

All Major Credit Cards Accepted Located in the North Shore Marketplace
 66250 Kamehameha Highway Haleiwa, Hawaii 96712

Join us Easter Sunday, April 24th for Easter Brunch and Festivities!



Happy Easter!



Church Services at 9am in the Pavilion with Pastor Ron Valenciana

Easter Brunch

In the Kuilima Ballroom with Live Entertainment by Kapena
Seatings at 10am, 10:30am, 12:30pm and 1:00pm

hot selections

- Carved to Order, Roast Prime Rib
- Smoked Ahi Benedict
- Whole Grain Mustard Chicken Breast
- Oven Roasted Pork Loin with Waialua Asparagus
- Sautéed Curried Cous Cous Asparagus & Broccoli
- Anchovy & Olive Topenade & Hummus, Babu Ganoush

sides & display highlights

- Assorted Sushi
- Cha Soba Noodles & Dipping Sauce
- Tako Poke & Ahi Poke; Tsukemono, Lomi Salmon, Poi
- Marinated Mussels, Artichoke Hearts & Mushrooms
- Peel & Eat Shrimp with Cocktail Sauce & Lemons
- Cashew Crusted Fried Tofu & Wheat Bulger Tabbuli

action stations

- Belgian Waffles with Toppings Station
- Eggs & Omelet Station
- Mongolian Barbeque – Beef, Chicken & Shrimp
- Salmon Wellington, Asian Blackbean Sauce & Thai Curry

soup

- Lobster Bisque

dessert highlights

- Banana's Foster Station, Mocha Ganache Cakes,
- Blueberry Cheesecake, Banana Cream Pie
- Macadamia Nut Turtle Brownies, Coconut Custard Cake
- Bread Pudding with Vanilla Creme Anglaise

\$42 Adults and \$21 Children ages 4-11

15% service charge and 4.712 tax will be added to the final bill.
Reservations must be guaranteed and tickets are non-refundable.

Brunch Festivities for the Keiki
 10am – 2pm: Jumping Bouncers
 11am – 2pm: Easter Bunny Visit & Picture Taking
 11:45am – 12:15pm: Easter Egg Hunt!

TO PURCHASE BRUNCH TICKETS CALL 293-6053

The Hale'iwa Family Dental Center, Ltd.



presents

"Comfort Dentistry"

including—

- Relaxation Glasses
- Television Glasses
- Caring Staff
- Special Medication to help you relax
- Laser Cavity Detection
- New Patients Welcome!

Your teeth are much too important to neglect.

Call: 637-9652
for your reservation

We're conveniently located behind First Hawaiian Bank
in the heart of Hale'iwa.

Editor's Choice

"What's Up?"

(Author Unknown)

There is a two-letter word that perhaps has more meanings than any other two-letter word, and that is 'UP.'

It's easy to understand UP, meaning toward the sky or at the top of the list, but when we awaken in the morning, why do we wake UP?

At a meeting, why does a topic come UP?

Why do we speak UP and why are the officers UP for election and why is it UP to the secretary to write UP a report?

We call UP our friends.

And we use it to brighten UP a room, polish UP the silver; we warm UP the leftovers and clean UP the kitchen.

We lock UP the house and some guys fix UP the old car.

At other times the little word has real special meaning.

People stir UP trouble, line UP for tickets, work UP an appetite, and think UP excuses.

To be dressed is one thing, but to be dressed UP is special.

A drain must be opened UP because it is stopped UP.

We open UP a store in the morning but we close it UP at night.

We seem to be pretty mixed UP about UP!

To be knowledgeable about the proper uses of UP, look the word UP in the dictionary.

In a desk-sized dictionary, it takes UP almost 1/4th of the page and can add UP to about thirty definitions.

If you are UP to it, you might try building UP a list of the many ways UP is used.

It will take UP a lot of your time, but if you don't give UP, you may wind UP with a hundred or more.

When it threatens to rain, we say it is clouding UP.

When the sun comes out we say it is clearing UP...

When it rains, it wets the earth and often messes things UP.

When it doesn't rain for awhile, things dry UP.

One could go on and on, but I'll wrap it UP, for now my time is UP, so...it is time to shut UP!

Saccoccio & Lopez

ATTORNEYS AT LAW

Serving Hale'iwa since 1984



Paul & Nita

*Bankruptcy
Personal Injury • Criminal Law
Landlord/Tenant
Traffic Offenses • DUI*

Family Law
*Adoption • Custody • Divorce
Paternity • Guardianship
Deeds, and Wills*

637-7611

VISA/MC Accepted
Above the Hale'iwa Post Office

KUA'AINA



The Best!

IN HALEIWA

637-6067

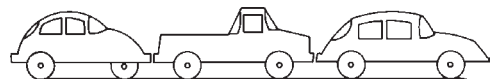
NOW IN HONOLULU

591-9133

AT WARD VILLAGE SHOPS

HALEIWA • TOKYO • HONOLULU

CAR WASH !



Starting at \$5

Saturday, April 22, 2011

8am to 2pm

Waialua Community Assoc. in Hale'iwa

Proceeds to benefit the North Shore Food Bank

Sponsored by the Once A Month Church

(to volunteer or donate call 342-3969)

OK to bring food donation too

YOUR EASY SOLUTION TO COMPLICATED TAXES



It's okay if your tax files look like this. Gather them up and come to Liberty Tax.

Text "WAVE" TO 21040

Thanks for choosing Liberty Tax

We'll dig for every deduction you're entitled to and give you the best return for your money.



Friendly Service.
Year-Round Availability.
Money-Back Guarantee.

ALOHA, HALEIWA!!

66-560 Kamehameha Hwy. - Haleiwa, HI
Next to Tesoro and the Roundabout

Ph: 637-2222



Polynesian Treasures

Hawaii's largest selection of Polynesian handicrafts and Hawaiian inspired gifts.

North Shore Marketplace • Haleiwa, Hawaii
Open daily from 10 a.m. • 808-637-1288

Quality Tile Crafts

"No job too big or small!"

Specializing in Ceramic Tile, Travertine, Marble, & Slate

Kevin Wilson

cell (808) 864-4985 office (808) 638-8492
www.QualityTileCrafts.com Free Est.

JOIN THE PKB DEAL CLUB!



RECEIVE A 25% DISCOUNT COUPON

LIMITED TIME OFFER!

Sign up for the PKB Deal Club and receive a coupon good for 25% off your next purchase!

UNTIL APRIL 20!

VISIT >> www.pkbsweets.com

to sign up today! Receive insider deals, coupons and our latest specials via email!



Come Celebrate
Fourth Annual TASTE OF WAIALUA
 Saturday, April 23rd
 at the Historic Waialua Sugar Mill

**A gathering of local art, food, music and community groups
 to celebrate the rebirth of the Old Waialua Sugar Mill**

**TASTE OF
 WAIALUA**

Starting at 9:30 am

Island X Hawaii presents:

COFFEE SEMINAR WITH SHAWN STEIMAN
 WAIALUA COFFEE & CHOCOLATE SAMPLES
 WAIALUA COFFEE / CHOCOLATE MILL TOURS
 NATURAL SHAVE ICE MADE FROM REAL FRUITS
 COMMUNITY KICHEN FOOD VENDORS
 MARGO GOODWILL, BILL BRADEN AND
 MANY MORE NORTH SHORE ARTISTS
 3RD STONE SURFBOARD FACTORY TOUR
 NS BATH & BODY SOAP FACTORY TOUR
 WAIALUA MADE CRAFTS & JEWELRY

**CONCERT IN THE
 SUGAR MILL**

Music Starts at 10 am

**Bla Pahinui & Friends
 The Abrigo Ohana
 Kalei Gamiao
 Ke Kani Nahe**

**Halau Hula Makana a Ke Aloha
 Roshan & Shivani / Clear Sky
 Coco Leong's Ukulele Cass /
 SUNSET BEACH ELEMENTARY SCHOOL**



100% WAIALUA

**WAIALUA FARMERS
 CO-OP MARKET**

Starting at 8:30 am

| | |
|-------------------------------|---------------------|
| Twin Bridge Farm | Kahuku Farm |
| Francis' Huli-Huli Chicken | Candido's |
| Letter Variety Store | Waialua Fresh |
| Ramones Farm | Fields of Aloha |
| Edith Ramsical - Pickled Okra | Letty's Stall |
| Norna Ramsical - Produce | Geronimo's |
| Ragal Variety Foods | Felician Farm |
| Tamayo's Farm | Something's Special |
| Ed's Little Farm | Jen Harmon |
| T&L Flowers & Palms | Soak & Smoke |
| Green Tea Hawaii | Big Dog Hot Dogs |
| Farmer & the baker, LLC | |
| Baker Dudes North Shore | |
| North Shore Goodies | |
| Rego Nursery & Goat Farm | |

www.islandxhawaii.com

www.tasteofwaialua.com

Event Coordinator Bill (808)779-7439

**Support North Shore agriculture and help keep it country!
 Experience the 2011 - Fourth Annual Taste of Waialua**

On Saturday, April 23, 2011 from 8:30 am – 5 pm, Island X Hawaii / Old Sugar Mill Brand Coffee & Chocolate will host a celebration of North Shore grown coffee, cacao, produce, food, art, film, music, and surf industry manufacturing at an open house exhibition in the Old Sugar Mill, Waialua.

The North Shore town of Waialua was once a bustling sugar mill town producing what locals said was the "World's Best Sugar" but in 1996 the Waialua Sugar Mill stopped production and closed its gates after over a 100 years of operation. In recent years, however, there has been a quiet resurgence of shops, businesses, and local product manufacturing that has helped transform the Old Waialua Sugar Mill into one of Oahu's newest visitor destinations. The mill is also the processing site of Waialua Coffee and Cacao / Dole. Free mini tours of the coffee and chocolate mill as well as free Waialua Coffee samples are offered daily at Island X Hawaii. Come join us on Saturday, April 23rd, for a gathering of local art, food, music, and community groups and to celebrate the rebirth of the Old Historic Waialua Sugar Mill town.

Event Schedule and Highlights

8:30 am Waialua Farmers Co-op Market opens featuring Waialua grown fruits and veggies. The Co-op is made up of former sugar workers, growing their produce on what was previously sugar land. To see a complete listing of Co op members, please go to www.tasteofwaialua.com.

9:30 am At Island X Hawaii, the Hawaii Coffee Association and Dr. Shawn Steiman of Coffea Consulting will present a history of coffee in Hawaii and the emergence of Waialua Coffee and Cacao. Afterwards Shawn will demonstrate several different brewing methods using Waialua Coffees. Shawn Steiman, a.k.a. Dr. Coffee, will also be available to sign copies of his book, "The Hawai'i Coffee Book: A Gourmet's Guide from Kona to Kaua'i". Coffees brewed for the seminar will be available for sampling for the remainder of the event.

Free, behind the scenes Coffee & Cacao Mill Tours will be offered by "the founder of Waialua Coffee and Cacao" Mike Conway from Dole. Space for this mill tour is limited so please call Bill Martin at 779-7439 to reserve. Be sure to taste the Natural Shave Ice made from Waialua Coffee and Waialua Chocolate and other real fruits at Island X Hawaii.

The North Shore Chamber of Commerce will present a short history of the North Shore area and provide information about the Chamber's ongoing historical North Shore tours. For more information please call (808) 637-4558 www.gonorthshore.org.

10:00 am The music starts with a performance of Makua's (Coco Leong) Sunset Beach Elementary School Ukulele Class. This will kick off a special day of North Shore Hawaiian music, hula, and the open market exhibition of Waialua arts, crafts, food, and community groups informational booths.

A new addition to the Taste Of Waialua this year, is an all day concert stage funded by Friends For Waialua Town through a grant from the Hawaii Tourism Authority and the City & County of Honolulu. Featured will be North Shore and Waialua based artists: Bla Pahinui and Friends, The Abrigo Ohana, Kalei Gamiao, Ke Kani Nahe, Halau Hula Makana a ke Aloha and Roshan & Shivani / Clear Sky.

Members of the Waialua Sugar Mill Surf industry will open their doors to visitors with Third Stone offering free tours of their surfboard factory and Sugar Mill Films hosting showings of their films Finding Aloha, North Shore Experience and Hawaii Shark Encounters.

North Shore Bath and Body offers daily tours of their soap factory and demonstrations of their soap making process.

For more information about Taste of Waialua, please contact event coordinator Bill Martin at (808) 779-7439 islandxhawaii@msn.com, www.tasteofwaialua.com, www.islandxhawaii.com

For information about the concert contact Kathleen Pahinui with Friends for Waialua Town at (808) 637-8545 pahinuik001@hawaii.rr.com, www.waialuatown.info

You're invited to NSCF's 34th Annual

Easter SONrise Service
"Hearts on Fire"

Special Music by Cathy Gene Miller
6:30am, Sunday, April 24, 2011
Waimea Bay Beach Park

FOR THE KEIKI, ILLUSIONIST MIKE VILLORIA – FOLLOWED BY FREE CONTINENTAL BREAKFAST
NORTH SHORE CHRISTIAN FELLOWSHIP – PHONE 637-6225

HELP CLEAN THE WORLD

JOIN OUR
SOAP DRIVE *at*
 NORTH SHORE SOAP FACTORY
during
TASTE of WAIALUA 4.23.2011



**Bring in any bar of soap
 and get a FREE gift in return!**

Participate in the soap drive at the Soap Factory and get one of our handmade natural soaps for every bar you bring in!
 All donated soap goes to Clean the World.

NORTH SHORE
SOAP FACTORY
 67-106 Kealahou St, Waialua
 808.637.8400 | northshoresoapfactory.com



Go to NorthShoreSoapFactory.com for more information

PKB SUPER SAVER
Coffee & Pastry
COMBO DEAL

JUMP START YOUR DAY @ PKB!
 Purchase an aromatic cup of our Mt. Kaala Vista Blend coffee and enjoy 30% OFF any one pastry!

Offer valid between 5:30 - 11:00 daily

Excludes cakes, pies, sandwiches, bread loaves, and cookies

Offer valid between April 6 - 20, 2011.

Turtle Bay Resort gets a new GM

Benchmark Hospitality International has announced the appointment of Danna Holck as general manager for Turtle Bay Resort, Greg Champion, Benchmark's chief operating officer, recently made the announcement.

"It is with the greatest pleasure that I welcome Danna back to Hawaii, to Turtle Bay Resort and to the Benchmark Hospitality family," said Mr. Champion. "Born and raised on Oahu, she has excelled in senior leadership positions at hotels and resorts across the country. We're glad she's come home."

A native of Hawaii, Danna Holck returns to Oahu after two decades on the mainland and in Puerto Rico, serving most recently as general manager for Rio Mar Beach Resort & Spa in Rio Grande. Ms. Holck has held numerous general manager and executive-level positions at major brand properties in resort destinations throughout the United States. She began her career in hospitality sales and marketing at hotels in California, Hawaii and Florida.

"This is a full-circle career trajectory for me," said Ms. Holck, referring to her return home to Hawaii. "I'm looking forward to working with my team at Turtle Bay Resort and to reconnecting with my kama'aina friends of many, many, years. It's good to be home!"

Danna Holck, who is of Hawaiian, Japanese and Norwegian descent, was born and raised in Kailua, Hawaii, on Oahu. Ms. Holck grew up in a military family -- her father was a soldier with the U.S. military's most highly decorated unit, the 442nd Infantry. She embraced the traditional values of her native



Hawaii, including dancing the hula from age 5 and dreaming of becoming a professional hula dancer. Ms. Holck, who is trained in judo and jujitsu, attended the University of Hawaii, School of Travel Industry Management. She is relocating to Kahuku.

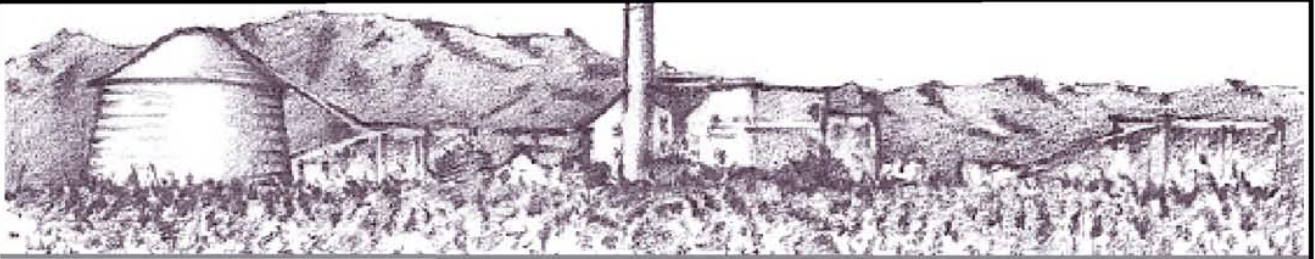


Mrs. Hawaii 2011 reigns from Laie

This past Sunday, Native Hawaiian Mrs. North Shore Hawai'i, Lara Leimana Fonoimoana, was crowned Mrs. Hawaii 2011 at the Pacific Beach Hotel. There were 8 contestants from the state that ran for the coveted spot. Lara, wife to Vance Fonoimoana of four years, recently gave birth 5 ½ months ago to their second child and currently resides on the North Shore of O'ahu. Lara is a real estate agent for Prudential Locations and promotional dancer for the Polynesian Cultural Center. Lara's platform is educating communities on the importance of health, fitness and overall wellness.

The Mrs. Hawaii Pageant recognizes women and their personal accomplishments ranging from marriage, family, career, and community to talent, beauty, fashion, health, and self-improvement. Mrs. Hawai'i will be competing in the 35th Annual Mrs. America Pageant on April 11th -14th held at the famed Greenbrier Hotel in White Sulphur Springs, West Virginia. The Pageant will be aired to a national audience on Mother's Day, May 8th. The top two will automatically advance to the semi-finals on April 13th. Supporters may also vote on FACEBOOK FANTASTIC FACES....Send email to: events@mrsamerica.com. In the body of email write: HAWAII then press send. The winner will receive a special prize.

WAIALUA FEDERAL CREDIT UNION



4.50% APR
NEW AUTO LOANS
 Up to 100% Sales Contract
 New Previously Untitled
 Maximum Terms 6 years
 7 Years on Loans
 over \$25,000

3.75% APR
until March 10, 2012
HOME EQUITY LINES OF CREDIT
 Owner Occupant
Maximum Line: \$150,000
 Variable adjusted annually on March 10
(3.5% above the average 26 week Treasury Bill rate)
 Call for more information

67-292 Goodale Ave. Waialua, HI 96791 808-637-5980



Oceanside Chapel Service at Turtle Bay Resort



Every Sunday at 9 a.m. in the beautiful oceanside wedding pavilion.
 Hosted by Pastor Ron Valenciana

- Non-denominational 45 min. service
- Traditional & Contemporary music
 - 15 minute sermon
- Free gift to all first-time visitors
- All are welcome! Free validated parking

For more information call Pastor Ron at 342-3969.

*When church is pau, enjoy dining at the Palm Terrace, Hang Ten Pool Bar, or Lei Leis.



wanna learn?
NORTH SHORE JIU-JITSU CLUB
try it out free!
men-women-kids
NorthShoreBJJ@GMail.com

SIX SPECIAL NIGHTS

| | | |
|--|--|--|
| MONDAY \$2.50 BEER BOTTLES & DRAFT | TUESDAY \$5.00 OFF PIZZA REGULAR OR LARGE | WEDNESDAY SALAD NIGHT 1/2 OFF SALADS |
| THURSDAY \$3.50 NIGHT \$3.50 SLICES, SALADS, MAI TAI'S, WINE & BEER |  | SATURDAY \$4.50 NIGHT \$4.50 SLICES, SALADS, MAI TAI'S, WINE & BEER (or less) |

FRIDAY NIGHT \$5.95 BURGER & FRIES

Dine In Only - 4:00 PM Until Closing - Haleiwa Shopping Plaza - 637-5095

PLUS \$2.00 Off with this Coupon

Some Restrictions Apply. See Restaurant for Details.
When Ordering Regular Priced Items. Good Anytime. One Coupon Per Person.
Can Not Be Combined with Other Discounts. Expires 05/31/2011.



A Message From State Representative Gil Riviere

Aloha, North Shore.

We held a press conference on Sunday, March 27, 2011 at Hale'iwa Harbor to speak out against what appears to be vigilante activity in our harbor. Joining me to denounce the arsonist(s) were community leaders, business owners, residents, police, fire fighters, and even a critic of shark tours.

The wanton destruction of anyone's property by some criminal in the night must be opposed and condemned. Taking the law into one's own hands is not the way to solve a grievance and our community must stand up to make it very clear that these actions have crossed the line.

"We really are concerned about what is happening in our community," said Susan Matsushima, Chair of the North Shore Chamber of Commerce. "If we don't take the handle on this, I think we are all going to lose."

While it seems the criminals are targeting one boat owner, who has now lost three boats, the vandals have in fact destroyed or damaged five boats in



the process. This lawlessness must be stopped and the perpetrators caught.

No matter how intensely someone opposes a particular business, a type of business or any individual, there is no acceptable excuse for vigilantism. A crime against anyone in our society hurts all of society.

Representative Gene Ward, an outspoken critic of shark tour companies, came to stand in support against this criminal activity. "We have had concern in Hawaii Kai about shark tours but this is not the way to resolve the situation. There's a better way of doing this," he said. "Rule of law is better than the whims and the anger of certain individuals."

A reward of more than \$20,000 has been offered for information leading to the arrest and conviction of the arsonists. If you have any information about these crimes, please call Crime Stoppers at 955-8300.

Remember that my office is your office and I am here to serve the residents throughout our district. You are always welcome to visit us in Room 319 at the Capitol, we encourage you to share your thoughts with a phone call to 586-6380, or an email to RepRiviere@Capitol.Hawaii.Gov, and you can get more district information at GilRiviere.Info.





Glennel Warren, MBA
Financial Advisor
P 808.218.2633



Elsa Agdinaoay
Financial Specialist
P 808.927.2094

Wealth Management

Business Succession Plans

Educational Plans

Life Insurance

Long Term Care Planning

Disability Insurance



PROTECT • INVEST • ACHIEVE



Official Sponsor

677 Ala Moana Blvd, Suite 705, Honolulu, HI 96813 | office 808.695.2123
toll free 866.252.7270 | fax 808.695.2121

Registered Representatives of Park Avenue Securities LLC (PAS) 7 Hanover Square, New York, NY, 10004. Securities products and services are offered through PAS, a registered investment advisor and broker/dealer. Financial Representative, The Guardian Life Insurance Company of America (Guardian), New York, NY. PAS is an indirect wholly owned subsidiary of Guardian. Wealth Strategy Partners is not an affiliate or subsidiary of PAS or Guardian. PAS is a member FINRA, SIPC GEAR 2010-7106



EASTER SERVICE

Sunday, April 24, 2011
 Haleiwa Elementary School
 9am
GRAND OPENING
 Come join the celebration!

808-621-9363 / a foursquare denomination / www.newhopecentraloahu.org

*The Salvation Army Family Store
 - Wahiawa store only
 All clothing 50% off
 every day and
 \$.99 clothing specials
 on Fridays
 open Mon-Sat 9am-6pm
 subject to change*



For more information contact:
 Fred Deisser at 808-522-8425
 Located at 322 Sumner St., Honolulu 96797
 Across from K-Mart in town

NORTH SHORE AYSO REGION 289 2011 FALL REGISTRATION

Waiialua Comm. Assoc. (WCA)
 Cottage 2
 Sat., Apr. 2, 2011 9AM-1PM
 Wed., Apr. 6, 2011 6PM-8PM

Sunset Beach Elementary Cafeteria
 Sat., Apr. 9, 2011 9AM-1PM
 Wed., Apr. 13, 2011 6PM-8PM

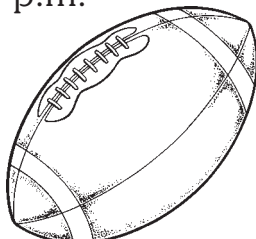


Contact us via email at
northshoreayso@hotmail.com
 or visit us on the web at
www.northshoreayso.com
BIRTH CERTIFICATE REQUIRED

Waiialua Bullpups Football 2011 Registration

Saturday, April 9, 2011
 9 a.m. - 12 p.m.
 WCA

All divisions
 (Tiny Mites – Midgets)
www.WaiialuaBullpups.org





Councilman
Ernie Martin
Serving You in District 2

"Honolulu faces a serious financial crisis. Squeezed by Federal mandates that will require the City to spend nearly a billion dollars on wastewater improvements over the next twenty years, high city operating costs, unfunded liabilities and steadily increasing debt, the City must service an increasing number of households as revenues decline. There is no longer enough tax revenue for things to remain the same. If essential services are to be maintained without raising taxes, a new approach to government must be taken."

These statements could have been part of Mayor Carlisle's preamble to his budget presentation earlier this month. In a testament to the adage that history often repeats itself, the quote was taken from a 1994 Conference convened by the Honolulu City Council entitled "A Revolutionary Budget Proposal to Manage Honolulu's Debt" where panelists discussed possible resolutions and ordinances as well as state constitutional and Honolulu charter amendments to deal with the mounting budget deficit.

Suggestions are plentiful partly because the city has enjoyed fiscal autonomy for a relatively short time since statehood. The ability to assess, impose and collect real property taxes was transferred to the counties on July 1, 1981 as a result of the 1978 Constitutional Convention. In the thirty years since, there have been numerous blue ribbon panels, special advisory groups and ad hoc committees with corresponding reports and recommendations on the city's tax policy.

In 1991, the City Council's Budget and Finance Committee established the "Real Property Tax Advisory Committee" calling it a "framework reference on real property tax". In 1995, the Honolulu City Council's "Budget Summit" produced a volume of

reports complete with draft resolutions and bills designed to improve the City's debt and financial policies. In 1998, a Blue Ribbon Budget Advisory Committee made up of business and community leaders was formed to review user fees, property taxes and fixed operating costs. By 1999, the City faced a \$130 million dollar shortfall and the same task force members were reportedly unable to reach consensus on raising property taxes. Instead, members criticized the state for not giving the city more means of raising revenue and even suggested lobbying the Legislature for an exemption from the general excise tax.

Real property taxes represent the largest source of income for the City. Other sources include fuel taxes, special assessments, licenses and permits, intergovernmental revenues and charges for services. Today we are once again facing a large deficit and discussions turn to tax increases more readily than reducing the size of government. While some tax increases might not be preventable due to inflation and an occasional economic recession, the bulk of them should be predictable. Tax rates and user fees should be subject to a periodic review rather than a reaction to the latest fiscal crisis. Simply put, the public should be able to anticipate modest increases over time rather than steep and sudden increases.

There are ample reasons for the City Council to solicit the advice of a group of professionals similar to the Tax Review Commission which has been mandated by state law to report to the Legislature every five years since 1979. I intend to offer a resolution establishing a similar review panel that would meet on a set schedule to provide recommendations to the City Council. A serious and careful review of the fiscal policy of the City is too important to be left up to chance. A mandated periodic review would insure that we neither put it off when the economy is good nor resort to decisions made under duress in bad times. And that's a good thing.

Being fair and reasonable will earn you respect and admiration, but being genuinely kind will make you a total love magnet.

Mike Dooley - inspirational author & speaker

We Pay You
\$100
CASH & FREE
TOWING
for unwanted vehicles
(complete)
636-7183
North Side Towing

DRAFTPLANS
HAWAII

- Over 10,000 floor plans & blueprints available for purchase online. Gather ideas for your own design.
- Drafting Service available for new home designs, additions, renovations, decks, fence, rock walls, etc.
- Free property specifications & title search info.



www.draftplans.com

Call for free estimates:
265-0035





at Turtle Bay Resort

ISLAND-STYLE SEAFOOD ON THE SANDS OF
KUILIMA BAY BY CHEF FRED DEANGELO.

.....
LUNCH, DINNER & COCKTAILS
.....

LIVE MUSIC FRIDAY EVENINGS



www.olaislife.com

RESERVATIONS RECOMMENDED : 808-293-0801
.....

57-091 KAMEHAMEHA HWY.
KAHUKU, HAWAII 96731



DeAngelo
CATERING

Contemporary Island Cuisine

by Award-Winning

Chef Fred DeAngelo

.....

www.DeAngeloCatering.com

info@deanglocatering.com



**Direct From
Donovan
State Senator
Donovan Dela Cruz**

Senator Donovan Dela Cruz recognized two North Shore residents on the Senate floor on March 22. Presented with Senate certificates were:

Carly Button of Waialua, an eighth grade student at Hawaii Technology Academy, achieved national recognition for exemplary volunteer service by being named one of the top two youth volunteers in the State of Hawaii. She was named recipient of the prestigious Prudential Spirit of Community Award for 2011. This award honors young volunteers across America who represent the best of America's youth, who are role models to their peers. Carly co-founded a nonprofit organization in 2008 that raised more than \$35,000 to help disadvantaged children around the world, with \$10,000 for a van for a Ugandan orphanage, donating books and a solar water heating system to an orphanage in Mexico, and provided a scholarship and backpacks of school supplies for homeless children in Hawaii.

Jalee Fuselier, Miss Hawai'i 2010, born and raised in Haleiwa, was second runner up in the Miss America

Pageant. Jalee studied abroad in France and excelled in International Relations from Hawaii Pacific University with recognitions on the Dean's list and the Presidential Scholarship Award. Her ambition is to pursue a Masters Degree in Counseling Psychology. Jalee has earned many awards for her accomplishments, awards such as: Presidential Volunteer Service Award, Volunteer of the Year Award-AUW, Children's Miracle Network Miracle Maker Award, Miss Hawaii Academic and Community Service Awards, and was the first Miss Hawaii Outstanding Teen. Jalee's passion and purpose are to promote, preserve, and perpetuate the diverse and unique cultures of the world.

Opening Day for the Battle in the Saddle

By Siri Masterson

Hold onto your hats, fill your coolers, and bring your friends because the North Shore's most popular tailgate party, Polo Sunday, is back! Two polo games, a half-time skydiving show and performances by popular local bands are just some of the entertainment for this year's 2011 season, opening April 10 at 2 p.m. (gates open at noon).

Hockey on horseback is the best way to describe the fast-paced game which keeps spectators on seat's edge as horses fly up and down the field while riders attempt to score, block and ride-off their opponents. Polo Sunday is a tradition which has grown by leaps and bounds in the past few years, has become a "must" for anyone looking to enjoy an entertaining day at the beach on the North Shore. The most popular days are opening and closing day which draw crowds of over 1,000 people.

Mokuleia's Hawaii Polo Club throws a party which attracts an array of people, young and old, but the game known as "the battle in the saddle" has solid roots in Hawaii's history. It was first popularized in the early 1900's when played in Kapiolani Park at a time when horse activities were a common part of entertainment. Hawaii's local paniolo easily picked up the sport and became some of the territory's most skilled polo players, bringing their family and friends to cheer them on every Sunday. Today, the family atmosphere remains the same as tailgaters pull up their cars and set up their tents to watch the players, feel the beat of thundering hooves, and enjoy the company of others.

The polo field offers ono grinds by local vendors, the well stocked Polo Beachside Bar, and is dog friendly (if on a leash). But if you want to ride in local style, BYO and get there early to get the best spot! Tickets are \$10 general admission and \$7 for military. To see more info, visit www.hawaii-polo.org

Hawaii Polo 2011 OPENING DAY!

APRIL 10

**Sunday Polo returns to
MOKULEIA**

Every Week at 2 pm!

Gates open at 11 am for tailgating and beach
Half-Time and Post-Match Activities
LIVE Music • Skydivers • Food • Polo Bar



- Try Polo! Take a lesson with our club pros— all ages and skill levels!
 - Oceanfront Trail Rides
- Clubhouse available for Private Events
 - Social Memberships Available

For more information call
637.7669



The Chef & the Chief

Executive Chef Hector Morales (left) of the Turtle Bay Resort received an appreciation award from Chief Watkins representing the US Navy NCTAMS PAC facility at Whitmore for volunteering his services at the resort for the annual Operation: Aloha Thanksgiving Day meal for the homeless. Besides cooking hundreds of turkeys for hotel restaurant patrons, Chef Hector voluntarily cooks over 50 turkeys and trimmings and donates them to Operation: Aloha. (Ron Valenciana photo)

Last Call!

ATTENTION!

All Medical Related Businesses
Our 2011 MEDICAL DIRECTORY
will be published: April 20, 2011 (revised date)

***Ad deadline is: April 8, 2011**

Who should advertise?

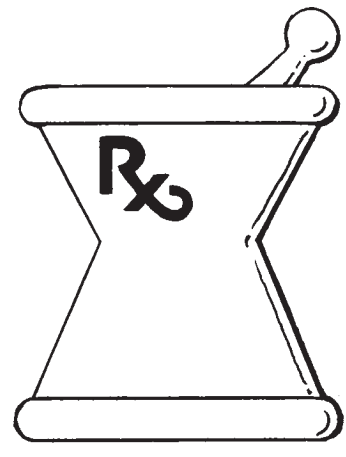
*Doctors, Dentists, Clinics, Hospitals, Pharmacies,
 Optometrists, Chiropractors, Physical Therapists,
 Massage Therapists, Insurance Companies, Lawyers,
 and all Medical Care Professionals.*

Call today to reserve ad placement

637-3138

North Shore News
 or email: NShoreNews@aol.com

Your Prescription for Success



Kahuku High School JROTC participates in Cadet Leadership Challenge (11-17 Mar 2011)

By LTC Tim Schiller, Senior Army Instructor, Kahuku High School

The 40th Annual JROTC Cadet Leadership Challenge (JCLC) 2011, held at Area X, sponsored by 25th Infantry Division, focused on leadership while cadets participated in adventure training events. The goal was to have fun while learning to lead and to promote the mission of JROTC, "To motivate young people to become better citizens." 355 cadets from the Army and Air Force High School JROTC programs representing 17 schools lead their way to this unique training experience.

For the overall execution of JCLC, four cadets from each school were selected to attend the Advanced JCLC (AJCLC) to prepare them mentally and physically for the arrival of the main body. These cadets were challenged with squad drill, platoon drill, physical fitness, a leadership paper, and a job interview of what leadership position they wanted for JCLC.

As cadets began arriving on buses from around the island, the cadet leaders from AJCLC greeted them and quickly in-processed them, and started to set-up over 25 General Purpose (GP) Medium tents. Cadets were divided into four Training Groups (TGs), each had a chain of command, representing a Battalion, and all four groups made the JCLC Training Brigade.

Kahuku's current Battalion Commander, Cadet Lieutenant Colonel Harmony Kahala, a junior at Kahuku High School, was selected as the Brigade Executive Officer (XO), second in command. Her main focus was to make sure the Battalion Commanders and the Brigade Staff did their job, get to the training on time, and to keep all the cadets motivated.

Kahuku's Cadet Captain Jayce Young, was selected to be the Group One Battalion Command Sergeant Major (CSM). He too, is a junior at Kahuku High School, and responsible for the cadets in his Training Group ensuring they get to the different training events. As CSM, he called many cadences as his cadets marched from event site back to base camp. Cadets assigned to each of the four training groups rotated throughout Schofield Barracks. Adventure training included, rappelling, rope-bridge, drown-proofing, Leadership Reaction Course (LRC), and a mystery event held at night.

The rappelling site included hands-on training, with safety being the most important aspect of this event. Each cadet went through this station including rappelling down a 30 foot vertical hill with commercial seat harnesses. Some of the cadets were terrified, but with the encouragement from other cadets; and coaching from Senior Army Instructors (SAIs) along with the Assistant Instructors (AIs) led every cadet to success.

The rope-bridge construction and competition



was lead by the 9th Mission Support Command (MSC). Cadets were divided from their training groups and each constructed a rope-bridge over a simulated river. Once the bridge was completed, each member of the team had to cross the bridge using techniques learned.

Drown-proofing was conducted at Richardson Pool with supervision from the USMC. Cadets entered the pool by climbing up the 15-foot platform and stepped off into space. This was the highlight for many cadets, who overcame fears of falling from high distances. Following this, cadets learned different techniques using their shirt and pants for flotation to help them in a situation to prevent them from drowning.

University of Hawaii ROTC sponsors the Leadership Reaction Course (LRC). Cadets were challenged to work as a team while experiencing critical thinking to solve complicated problems of crossing an obstacle. Cadets were placed in a leadership position such as a squad leader, and with 20 minutes, negotiate the obstacle. All photos and video clips of camp can be found at a web site created by the cadets, JCLC2011.WEEBLY.COM

BULLETIN BOARD

LIC. #AC 18275



COWPER CONSTRUCTION
GENERAL ENGINEERING CONTRACTOR
 Full Service Sitework Contractor
Septic Systems & Tanks
 25 yr. exp.
Michael Cowper 638-7200
 cowperhawaii.com



ROB'S
 auto repair service

Robert Oakley ASE Certified Master Mechanic Computer & Electrical Specialist
 Owner Waialua, Hawaii (808) 330-0459

N-C PLUMBING & SUPPLY
 Cont. Lic. No. C-8913



- RESIDENTIAL & COMMERCIAL SALES & SERVICE
- CONTRACTING & DESIGN • HOME PLUMBING SERVICE
- PLUMBING FIXTURES, HEATERS • FREE ESTIMATES

Nestor P. Calilao (Owner) Bus: 637-8662
 P.O. Box 769 Res: 638-5157
 Waialua, HI 96791 Cellular: 372-8718

email: nncplumbing@hawaii.rr.com



DR. PORTER TURNBULL
 Chiropractic Orthopedist
 (808) 638-8740
 Appointments available Mon.-Sat.
 (evenings by appointment)

- Industrial accidents & auto injuries
- Sports injuries • Spinal care
- Safe, Effective, and Gentle

Bank of America
 Home Loans

Jay Oku
 Mortgage Loan Officer

Tel: 808.275.8900 Cell: 808.393.0707
 jay.oku@bankofamerica.com

HI2-902-01-03
 55 Merchant St 16th Floor, Honolulu, HI 96813
 Equal Housing Lender



Specializing in vegetarian foods, vegan foods, whole foods, organic food. Wheat free, dairy free, raw foods, gluten free. A complete selection of natural foods for 37 years. Make earth day, everyday.
 Open 7 days.
 Mon.-Sat. 9am-6pm.
 Sun. 9am-5pm

66-445 Kam. Hwy
 Haleiwa, Hawaii 96712
 Next to the Post Office
 808-637-6729 • 808-637-1922 fax

HAIR SPECIAL
 Full Highlight and Cut \$100.00
GINA WALKER
 Hairdresser to the stars from Malibu, CA
 Cut and Highlight Master
Now at North Shore Nails Salon & Spa
The nicest salon in Haleiwa
 375-3984

MacMurray and Sons Construction LLC
 New Construction. Remodels, Granite.

Jason MacMurray
 BC 30144
 Licensed, Bonded, Insured

1-808-479-7365
 Fax: 808-638-7121
 Jason@macmurrayandsons.com
 www.macmurrayandsons.com



Waialua Bakery
 New Hours:
 Open Monday - Saturday
 10am - 5:00pm
 fresh sandwiches, smoothies, and baked goodies
808-341-2838
 Fresh Fruits and Greens supplied by:
Farmer and The Baker llc
808-341-1992




ISLAND PROPERTIES
 SHERRILL ERICKSON
 Realtor Associate
 Res. (808) 293-1056 • FAX (808) 955-9541
 2615 S. King St., Suite 2E/F
 Honolulu, Hawaii 96826
 Serving the North Shore since 1980



Waialua High School surf club wins inaugural competition

Competing together for the first time ever, the Waialua High School Surf Club won their opening event of the Hawaii Surfing Association (HSA) Scholastic Surf League at Makaha this past weekend. Scoring 70 total points to Le Jardin Academy's 45, Waialua's inaugural competition included heat wins by team members Kainoa Kealoha (Men's Shortboard and Longboard); Tiger Doerner (Men's Shortboard); Kira Burke (Women's Longboard); and Brandon Amaya (Coed Bodybodyboard).

The team's strong performance was a great start for coordinator coach Justin Lambert, the driving forces behind Waialua's first-ever surf team.

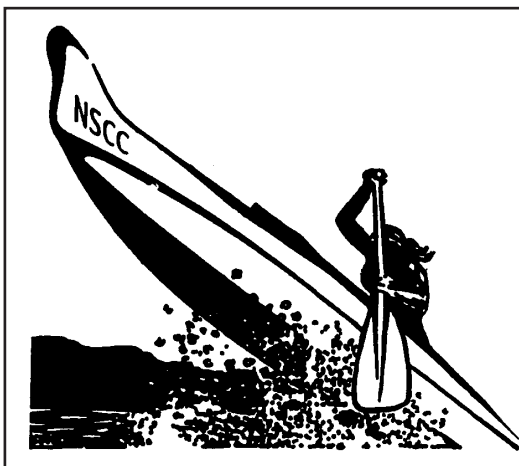
"I created the club to provide a positive influence on Waialua's youth," Lambert said. "I graduated

from Waialua myself, and wanted to give back to the school by creating something fun to help keep kids motivated and stoked on surfing."

To keep the focus on classroom performance and overall water safety, everyone on Waialua's roster must maintain a GPA of 2.0 or better, and have achieved junior lifeguard certification.

A division of HSA, the Scholastic Surf League is a series of events drawing co-ed teams from high schools throughout Oahu. With 6 high schools currently represented, Waialua's 70-point total is second only to Kamehameha (77 points).

Watch for Waialua at their next league event, April 9th or 10th, as they head to the competition-friendly wave at Maile Point.



*** RECRUITING SEASON ***

North Shore Canoe Club

Hale'iwa Beach Park • Across Jameson's Restaurant
Tuesday/Thursday at 5 p.m. • Saturday at 7:30 a.m.
Men & Women 18 & over • No experience required

Join This Great Tradition

For more info call 753-7974
www.northshorecanoecub.com

Keiki recruitment 17 & under begins April 4
"Bring your Mana"

BULLETIN BOARD

BOW WOW BUNGALOWS

Licensed Boarding Kennel
North Shore, Oahu

Reasonable Rates • Ph. 637-2562

These Dogs Have Fun!



"The Name Says It All"

Roofing
Repair • Maintenance
Coatings • Decking • All Types
Lowest Price • Guaranteed
Free Estimates • Insured

Dave McEuen
dave@theroofrepairspecialists.com

For Prompt Service

888-8290

Island Wide 24/7

"Family Owned and Operated"

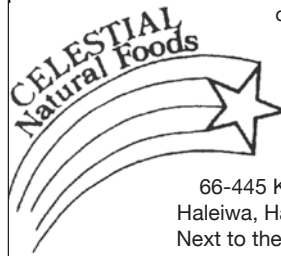
Paradise Lua



Parties • Special Events
Anykine Private or
Public Functions

"Portable Sanitation at its finest"

690-8116



Featuring the largest selection
of certified organic produce
on the North Shore.
No panic...ours is organic.
Open 7 days.
Mon.-Sat. 9am-6pm.
Sun. 9am-5pm

66-445 Kam. Hwy
Haleiwa, Hawaii 96712
Next to the Post Office
808-637-6729 • 808-637-1922 fax



**LEIGH DIVERSIFIED
CONSTRUCTION, Inc.**

General Contractor Lic. No. ABC-22035

Home Design-Permits-Construction
Sitework, Septic System & New Plumbing, Concrete,
CMU Walls, Asphalt Re grind in-place Driveway

George Leigh or John (Ph:683-0081 Fax:683-0083)
www.leighdiversified.com

Financial Management Solutions

Secure Your Future With Professional Planning

- Tax Preparation • Financial Planning
- Accounting • Quick Books Advisor
- Small Business Advisory Service
 - Estate & Senior Planning
- Wealth Preservation Strategies

808-637-9690 fms@hawaii.rr.com

Located in North Shore Marketplace
66-250 Kamehameha Hwy. Suite C-209 Haleiwa, HI 96712

Pilates with Linda Yadao

Private, Semi-Private and
Mat Classes
Over 30 Years Experience

Call: 637.1230
linda@ynrmarketing.com

When it's time to tie the knot...

www.hawaiiweddingminister.com

informal beach weddings a specialty

(808) 342-3969



Tax • Bookkeeping
•Automated Accounting Solutions •

ANDERSEN TAX & ACCOUNTING SERVICES
BILL ANDERSEN

66-008 B KAMEHAMEHA HWY OFFICE: (808) 637-3272
HALEIWA, HI 96712 CELL: (562) 355-7921
anahulu@earthlink.net FAX: (808) 637-7189

Statewide Hotline for Litter

1-888-592-2522

Callers need to provide:

1. License plate number
2. Make and model of vehicle
3. Date and time and location
4. What was thrown/blown



CLASSIFIEDS

The North Shore News is published every other Wednesday and mailed free of charge to all North Shore homes and businesses. Extra copies may be obtained at our office.

PRESS RELEASE POLICY: Submit press releases in person or by fax, mail or email to Editor, North Shore News, P.O. Box 1117, Haleiwa, HI 96712. Please type your releases and keep them shorter than 200 words unless they are of an unusual news interest. Releases should be viable news stories and are published on a **space available basis only**, with priority given to those received in our office first. You may attach photos. We are not responsible for the return of any photos. All materials are submitted at owner's risk. We reserve the right to edit and/or refuse all submissions including advertising.

EDITORIAL POLICY: We welcome articles and letters from our readers. Letters to the Editor are published on a space available basis only and preference is given to shortness of length, and quality of content. We prefer to run not more than one letter, per person, per 6 month period. Letters subject to edit.

Views expressed by our contributing writers and advertisers do not necessarily reflect the view of the management and staff of the North Shore News. All rights reserved. Reproduction in whole or part without permission is prohibited. © 2011.

♥♥Need a minister for a North Shore wedding? Hundreds of knots tied for happy couples on Oahu. Simple beach-side ceremonies to formal church or chapel services. I'll make your special day an extraordinary memory. Call & leave clear message with phone number & possible date, time & place. 342-3969. Also: Vow renewals, house blessings, baby luaus.

PAUMALU ELECTRIC
David C. Hancock
638-9054 / Lic#C18074

SHORE ELECTRICAL SERVICE
New Const-Remodels
638-0049 / Lic#C20777

FREE Pregnancy Test
Above Haleiwa Post Office
Call for hours 779-4685

LGR Construction
Remodel • Repair • Design
Drafting • Painting • Small Jobs
Affordable rates. 343-4453/Lic#26759

Dog/Cat Nail Trimming
at your home only \$15.00
Call Julie 637-5395

Aloha Computer
PC Repair/Virus Removal
Fax/Copy/Internet Access
372-2667 or 237-4558

Lawn Care For You
Mowing, Trimming, Light Hedging
Call Thomas 637-5839

Ross McGerty BC24080
349-6359 • 637-9539
From Waialua to Sunset
Make Me the First Call
for Home or Rental Repairs
or Renovations

Seamstress
Rita Bell
497-3666

PARADISE PLUMBING INC.
New Const • Repairs • Remodels
808-368-1473 / Lic. 29856

Holo Holo Mobile Screens
New Screens • New Frames
Screen Repairs • Pet Proof Screens
Sliding Screen Doors • Affordable Rates
Call Today 783-8764

EXPERT ELECTRICIAN
Fans, emergency services, etc.
Jim Richards 371-9369

BEACH PLUMBING & ROOTER
Over 30 years experience
Call Larry 637-6400

GOT SOLAR?
Save Money — Help the Planet
For info call Jim Richards
371-9369

North Shore Tax Service
40+ experience on Oahu
Jeannine Poling
Enrolled Agent Before IRS
Tax questions?
Call 638-5130
or email kumupali@hawaii.rr.com

Ohana Clean Up
Carpet Upholstery Cleaning
Pressure Washing
375-1814 • 979-5579

Handyman Services
Remodeling, Carpentry, Floors,
Concrete, all parts of Construction
Call Bob "The nicest guy in the
business" Ph. 282-2812

NORTH SHORE EXTERIORS
Quality carpentry at a fair price
446-5445

SUP FIT
Stand up paddle fitness
Tues. or Sat. mornings
www.sup-fit.com

Bikram Yoga
Stretch, strengthen &
stimulate mind & body.
All ages and levels.
Please call for class schedule
637-5700

SHIATSU • LOMI
Aromatherapy
Milica Barjaktarovic
Lic # MAT8348
351-0848
HumanRemodeling.com

N.S. Property Maintenance
Power wash, painting int/ext,
deck repairs, extensions,
fences, gates,
carpentry & remodels.
Maintenance, lawn & yard.
Chris 381-5213/638-0659

North Shore Pumping
Cesspool & Septic Pumping
Complete Plumbing
Services, new & repairs
Lic. & insured #25567
638-0900 • 291-5089

Lisa Carley Skin Care
637-9400
lisacarley.com
67-292 Goodale Ave. #104
Waialua Shopping Center

LEARN TO SWIM
AT THE
HAWAII SWIM
SCHOOL
ON THE NORTH SHORE
Developing swimmers since 1982
Haleiwa Rd. at Smiley Place
637-4863

PUBLISHER/EDITOR
RON VALENCIANA
TYPOGRAPHY
DOWNTOWN GENERAL STORE
BOOKKEEPING & CLASSIFIEDS
LINDA SEYLER
CONTRIBUTING WRITERS
RON VALENCIANA,
BUTCH HELEMANO,
NATY HOPEWELL

For Advertising Rates,
call
637-3138

SUBSCRIPTION RATES
If you live outside the North Shore area on Oahu, neighbor islands, or the mainland, you can subscribe to the North Shore News. Our annual subscription rate is \$27 for 25 issues delivered by standard bulk mail (2-3 weeks), or \$48 for 25 issues delivered by first class postage (3-5 days). Call our office for payment information at (808) 637-3138.

HOW TO CONTACT THE NORTH SHORE NEWS

Letters to the Editor, and other items submitted for publication consideration may be sent to us via:

MAIL: P.O. Box 1117, Haleiwa, HI 96712
E-MAIL: NShoreNews@aol.com
FAX: (808) 637-8862
PHONE: (808) 637-3138

CLASSIFIED ADS

hawaiiweddingminister.com
342-3969
 31 years experience

Offshore Plumbing, LLC
 Commercial • Residential
 • Septic • Plumbing Design
 Mike Duenas, owner
 Lic #C28113
 630-1407
 Fax: 637-7870 • Office: 371-3451
 offshoreplumbing@yahoo.com

BOBBY'S BODIES
 Tuesday evenings at 5:00 p.m.
 • Body Toning
 Friday mornings at 9:00 a.m.
 • Cardio Pump/Fat Burner
 For more info: call Bobby, owner of
 BOBBY'S BODIES at 637-4150

**Windward Shoe Repair
 & Small Engine Clinic**
 Waialua Shopping Center
 Mon.-Fri. • 8am-4pm
 234-8135

NORTH SHORE TV
 To all earth friendly consumers
 Do you have a TV you no longer
 want or need? Call us first before
 you take it to the dump.
North Shore TV @ 637-4111
**No drop offs without prior
 notification.**

THE LAWN RANGER
 Lawn Maintenance
 no yard too hard
 no lawn too far gone
 We mow betta
 258-6439 Dan Fatchett



**Marianne
 Abrigo, Properties**
 Specializing in -
 North Shore
 Real Estate
 Ask for our list of avail-
 able properties and/or a
 free market analysis.
Marianne M. Abrigo
 "Realtor since 1974"
Office 637-3511
Fax 637-0777
Email mabrigo222@aol.com

**Automotive Services
 and Restoration**
 • Auto Body & Paint
 • Detail & Shampoo
 • Upholstery
 Rick Estrada - 216-9419

HARVEY'S REPAIR, LLC
 24 hrs Towing Service
*Specializing in opening
 locked car doors*
 Call any time 478-0333

GERMAN CAR SERVICE
 Professional-Qualified
 Technician
 Call Gary
 637-6800

**ANGELS
 PLUMBING**
 Repairs
 Remodeling
 Renovation
638-7878
 Lic. #C12004



Farm seeking responsible
 hard working individuals.
 Work included but not
 limited to harvest, prune,
 clean & prep w/ flexible
 hours. Leave a message.
Call 707-200-1375

B.E. CONSTRUCTION
 Dumptruck & Backhoe
 Services
 Equipment, dirt, rock,
 green waste hauling
 in and out
DEMOLITIONS
 BRUCE ESCHÉ 783-9510

**North Shore
 Widow Cleaning Service**
 • Pro-Wash
 • Screens & Mirrors
 • In/Out
Call 349-4725
100% Satisfaction Guaranteed

**Hair Smoothing/
 Straightening**
\$25 OFF!!!
 Henna Based • Lasts 3 months
 Call Lindsay @ Giri Giri Salon
 571.244.6276
 www.hotbanghair.com

Your Clean Home
 Specializing in residential/vaca-
 tion homes & property manage-
 ment. Experienced/reliable and
 affordable. Green cleaning safe
 for your family and our planet!!!
 Please call for free estimate
 (808) 638-0262 or 779-76604

HELP WANTED
BUSSERS/SERVERS
 Pizza Bob's in Haleiwa is looking
 for BUSSERS/SERVERS. Experi-
 ence preferred. Apply in person
 at 66-145 Kam. Hwy.
Part Time Secretary
 Computer Skills Required
 Mon-Thurs 10am-4pm
 Fax Resume to 638-7643

COOKS/KITCHEN HELP
 Pizza Bob's in Haleiwa is looking
 for kitchen personnel. Experi-
 ence preferred, but will consider
 training the right people. Apply
 in person at 66-145 Kam. Hwy.

**Retail Sales
 Surf & Sea**
 Hawaii's Ocean Sports Headquarters
 is always looking for hard working,
 energetic people to become a part
 of our sales team. Good pay, bonus,
 benefits. Ocean sports experience
 and/or bilingual a plus. Apply in
 person daily 9am-7pm
 62-595 Kam. Hwy., Haleiwa

FOR RENT
 Gmd Fl. Professional/retail
 Space 466sq'/\$1,382.75/month
 Xcel Bldg. Haleiwa 779-7779

**White Sand Beach
 Front Vacation Rentals**
 Studio & 2Bdrm available
 year round swimming
 265-2125 / 247-3637

Available Space for Rent
 Waialua Community Association (His-
 toric Haleiwa Gym) has 512 sf cottage
 available for rent to a non-profit or busi-
 ness providing services that meet the
 mission of the community center. Con-
 venient location across from Haleiwa
 post office and plenty of parking. Call
 637-4606 for more information.

Next Issue - April 20, 2011
Deadline Date-April 17, 2011

FOR SALE
FOR SALE
NEW FRAMED WINDOWS
 Still in box...very cheap
 34 @ 81-1/4" x 46-5/8"
 7 @ 68-1/4" x 48-3/8"
 6 @ 60-1/4" x 46-5/8"
 Anodized frame. Gray tint.
 See ad on Craig's List
<http://honolulu.craigslist.org/oah/for/1271716623.html>
<http://honolulu.craigslist.org/oah/mat/1270061937.html>
 Or call: 834-0808

FOR SALE
Blank Canvases
 Pre-Stretched
 Suitable for all types of
 media. Cross bracing on all
 sizes listed below:
 Call 637-6666
 47"x47" \$50
 39"x39" \$40
 36"x36" \$35
 24"x36" \$25
 24"x24" \$20

MISCELLANEOUS
 Haleiwa Town Center
 Retail space for lease.
 636-2222

NS Seventh Day Adventists
 Saturdays 9:15-12:15
 Info: 638-8209

Recruiting Season
NS Canoe Club
Haleiwa Beach Park
 Tuesday/Thursday
 @ 5 p.m.
 Saturday @ 7:30 a.m.
 Men & women 18 & over.
 No experience required.
 For more info call
 753-7974

**IGREJA EVAN.
 BRASILEIRA**
 Domingos 10:00 am
 Quartas 7:30 pm
 Sextas-Culto de Oraçao 7:30 pm
 Voce e o nosso
 convidado especial
 Behind Hale'iwa Post Office
 637-5566
 Pastor Luiz • 638-2212

CLASSIFIED ADS

OFF da ISLAND

Are you leaving Oahu on vacation or business? Do you live on a neighbor island, the mainland or foreign country and subscribe to the North Shore News? Try send us a photo of someone in front of a sign or landmark holding a copy of the NSN. Email your photo along with the person or persons' name, community of residence, telephone number and photo location to: NSHoreNews@aol.com. Or, mail to OFF da ISLAND Photo, North Shore News, P.O. Box 1117, Hale'iwa, HI 96712. We cannot return photos so please send us a copy. Photos received become the property of NSN. Preference and priority will be given to emailed photos.

Visitor and Business Services Center is Open for Business Business Services Fee Schedule

COPYING
 B&W: \$0.15/page Public
 \$0.10/page Members
 Color: \$1.00/page

FAXING
 Islands: \$1.00
 Mainland: \$2.00
 International: \$3.00

LAMINATING
 \$0.50/half page
 \$1.00/page
 \$2.00/menu size

DOWNLOADING/UPLOADING & SCANS
 Downloads/Uploads: \$1.00 ea. per document
 Scans: \$0.50 per page

INTERNET & COMPUTER
 \$4.00/15 min.
 \$15.00/hour

2011 Medical Directory

North Shore News
 Publication Date: April 20, 2011
 Deadline: Date: April 6, 2011
 Reserve your space
 Your prescription for success.
 NSHoreNews@aol.com

CAR WASH

April 22 at
 Waialua Community Association
 8 a.m.
 All proceeds go to
 North Shore Food Bank

The North Shore Country Market

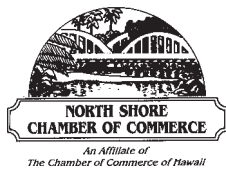
Local Community Open Market at
 Sunset Beach Elem. School. Saturdays
 from 8am to 2pm. Local produce,
 fine art work, crafts, food. Vendors welcome. Call 673-3296
 www.northshorecountrymarket.org

Waialua Farmers Co-op Market

Fresh Waialua-grown
 produce plants & more
 at the Waialua Sugar Mill

Sat. 8:30 a.m. - 2 p.m.
 Wed. 4:30 p.m. - 7 p.m.

We are open even though the gate is locked!! Call to get in
 638-8161 or 589-6242
 Kamaaina Land Nursery
 65-1140 Poamoho St.
 Waialua



Business Services Center

Fast & convenient fax, copy, scan, computer/internet, laminate, etc.
 Across from Haleiwa post office.
 North Shore Chamber of Commerce
 637-4558 or 342-8557

Kahuku Library's April Programs

After School Club every Wed. at 1:00 pm for film or craft
 Keiki Storytime every Thursday at 10:00 am
 SPECIAL: Kenny Endo & Taiko Drumming April 7 @ 10 am
 AARP Tax Help free April 7 and 14 from 9 to 1
 Bookmobile Routes call library for times and sites - every Monday
 Tuesday Night at the Library
 April 5 - Cream Puffs with Kent Thompson - a taste sensation
 April 12 - Cowboy Poetry - Windows into Western Life with Jim Parsons
 April 19 - Marine Debris - conference issues with Suzanne Frazier and Dean Otsuki
 - Talk Story: Farmer's Issues with local farmers and Rep. Gil Riviere and Junior Primacio
 April 26 - Mother's Day cards with Shawna Bielmann
 The library will be closed Friday, April 22 for Good Friday

Waimea Valley "Community Day"

Saturday, April 16, 2011

Volunteers must be at least 8 years old; however, children under the age of 18 must be accompanied by a parent or adult guardian. To sign up please contact Cybil Rawlins at 638-5855 or email at Crawlins@waimeavalley.net
 Volunteers may be assigned to participate in a number of activities, including out planting trees on trails in the North Valley, working in the Valley in our collections, or helping to malama our cultural sites.

Meet at the Visitor Center at 8:45 a.m. The program will run from 9 a.m.-12 p.m. Please wear closed toe shoes and bring sun screen, water and a hat.

This is an opportunity to malama (care for) Waimea Valley, one of Oahu's most treasured cultural resources. Volunteers will work directly with cultural and botanical staff throughout the morning to help to care for this special and sacred ahupua'a.

Statewide Hotline for Litter

1-888-592-2522

Callers need to provide:

1. License plate number
2. Make and model of vehicle
3. Date and time and location
4. What was thrown/blown

BLOOD DRIVE

SCHEDULED FOR THE NORTH SHORE IN APRIL

The North Shore community blood drives for April are scheduled on:
 • April 28 -Waialua Intermediate and High School, Gym, 7 a.m. - 12:30 p.m.

Don't throw away that old BIKE!

Donate it to Yikes Bikes

A non-profit program at Waialua High & Intermediate School

637-8200
 M-F • 8 a.m.-3 p.m.

How You Spell That?

The Once A Month Church lending library is putting out a call for new or used dictionaries, any size. Please drop off your donation at the North Shore News office, 2nd floor of the Haleiwa Post Office building.

DLNR ANNOUNCES TEMPORARY DEEP 7 BOTTOM-FISH SEASON CLOSURE IN STATE MARINE WATERS

The Department of Land and Natural Resources (DLNR) announces a fishing season closure for Deep 7 bottomfish species in State marine waters, effective March 12 through August 31, 2011. Deep 7 bottomfish species include onaga, opakapaka, ehu, kalekale, gindai, lehi and hapu'upu'u.

During the closed season, commercial and non-commercial fishing for Deep 7 bottomfish species is prohibited in State marine waters. The possession and sale, including the sales by dealers, of any Deep 7 bottomfish is also prohibited during the closed season.

BEACH CLEAN UP

Chun's Reef - 10 a.m.
 637-2211

Last Saturday of every month
 adoptabeachhawaii.org

REUNIONS

The NSN is happy to publish your school or family reunion Free of charge.
 Email your announcement to NSHoreNews@aol.com.

Outreach Services

Persons with Disability
 Advocacy Benefits Housing
 HCIL 54-113 Kawaipuna St.
 Hauula, HI 96717
 Ph. 293-9775 or 293-9777

MAHALO!

A big mahalo Toni, Sarah, Tom & Turtle Bay Resort staff for giving your kokua to the needy in our community. Your recent donation of blankets, comforters & clothes put grateful smiles on scores of needy children, adults & families.

Mahalo also to many in our community (some anonymous) that drop off food and toiletries for our North Shore Foodbank. If we're not in, just leave your donation by the door. (637-3138 or 342-3969)

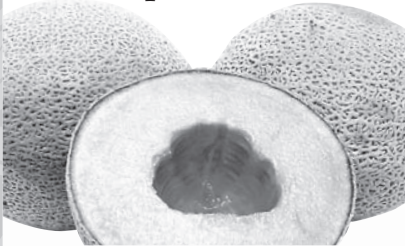


MALAMA MARKET HALEIWA:
OPEN DAILY 7 AM-9 PM
808.637.4520

MALAMA MARKET MAKAKILO:
OPEN DAILY 6 AM-10 PM
808.672.9955

Valid Dates:
4/6/11-4/12/11

Golden
"Magnificent"
Cantaloupe **89¢**
PER LB.



Fresh Boneless
Pork Country
Style Ribs **\$2.49**
PER LB.
Value Pack



Wild Alaskan
Copper River
Salmon Fillet **\$11.99**
PER LB.
Previously Frozen



Gatorade
Selected Varieties, 32 oz. **5/\$5**

Propel
Selected Varieties,
710 ml.

Recovery
Selected Varieties,
16.9 oz.

Prime
Selected Varieties,
4 oz.



Xtra Liquid
Laundry Detergent
or Fabric Softener **2/\$7**

Selected Varieties,
68.75-75 oz.



Vienna Sausage
Club Pack **\$6.99**

Selected Varieties, 18/5 oz.



Hunt's Spaghetti Sauce **4/\$5**

Selected Varieties, 26.5 oz.



Meadow Gold Yogurt **5/\$4**

Selected Varieties, 6 oz.



Cottonelle Bath Tissue **\$6.99**
Selected Varieties,
Double 12 Roll



Dasani Water **\$4.99**
24/500 ml.



Fresh Baked
French Bread **\$1.99**
EACH



8 Piece Fried Chicken **\$8.99**
2 Thighs, 2 Breasts,
2 Drumsticks and 2 Wings
EACH

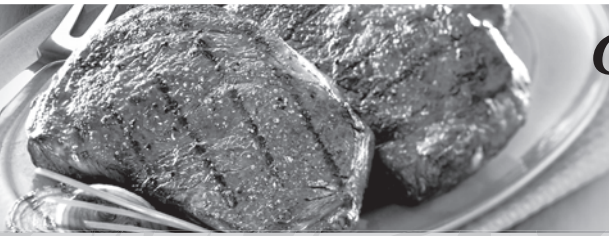


Corona
18 Pk. Bottles **\$19.88**



THURSDAY

INCLUDES:
7-8 oz. Steak
Rice • Tossed Salad • Drink



Grilled Steak
LUNCH
\$6.99

Hawaii Beverage Fee
Hawaii Beverage Fee of 1¢ per can or bottle will be added to purchase price at checkout. An Additional Hawaii Deposit fee of 5¢ will be charged for all specially marked beverage containers.

Limit five units (mix/match) per purchase, unless otherwise specified. We reserve the right to limit quantities. No sales to dealers. Prices plus applicable state tax. Hawaii EBT cards welcomed.