



**"E Ala Na Moku Kai Liloloa"**

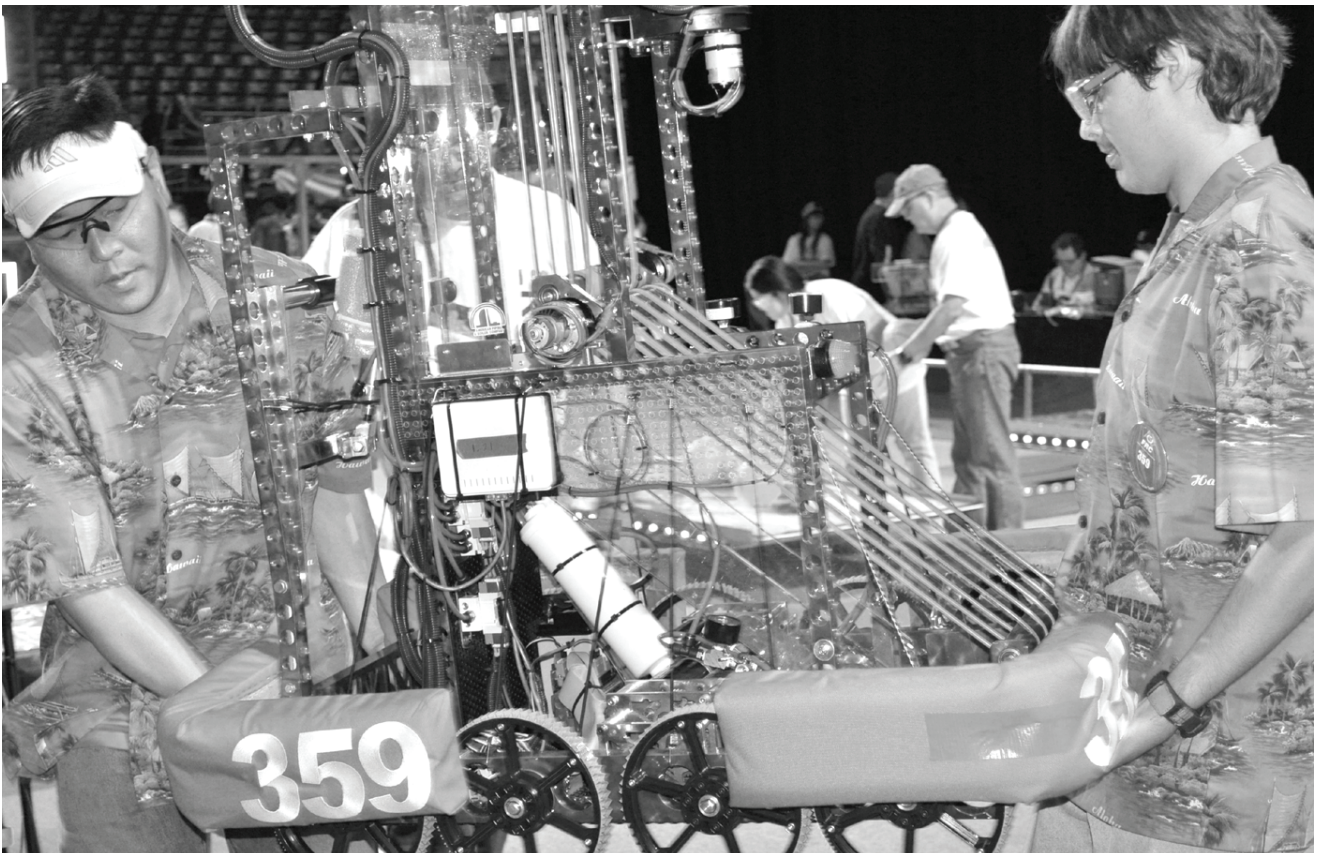
SUPPORT NORTH SHORE AGRICULTURE AND HELP KEEP IT COUNTRY!  
*Come Celebrate* SPRING 2012  
**FIFTH ANNUAL TASTE OF WAIALUA**  
 at the Historic Waialua Sugar Mill

Saturday, April 07, 2012 Starts at 8:30am

NORTH SHORE NEWS

April 4, 2012

VOLUME 29, NUMBER 7



Left: Mr. Glenn Lee and on the right William "Trip" Blazer.

## Waialua, Baldwin and Island Pacific Academy crowned regional robo champs

Six teams battle best of three in robotic "March Madness"

HONOLULU - After an exhilarating three rounds in the finals of the 2012 FIRST in Hawaii Regional

Robotics Competition, the Red Alliance consisting of Waialua High School, Baldwin High School and

Island Pacific Academy outscored the Blue Alliance consisting of Punahou School, West Hawaii Ex-

*Continued on page 8*

PRE-SORTED U.S. POSTAGE PAID Honolulu, Hawaii Permit No. 1479	Hale'iwa, HI 96712 66-437 Kamehameha Hwy., Suite 210
--	---

PROUDLY PUBLISHED IN  
**Hale'iwa, Hawai'i**  
*The Surfing  
 Capital of the World!*



## OFF da Island in snowy Tahoe

Pictured here are North Shore residents – son Santiago Alaka’ikapono Tamayo Valenzuela, mother Susan Mariliza Tamayo, and father Raul Rivera Valenzuela. The family recently took a sleigh ride at the Borges Sleigh and Carriage Co. at Lake Tahoe. The goal of the trip was to give young Santiago Alakai’s his first day of snow. They even sang Jingle Bells as Captain the horse trotted back to the station through the snow-laden path. To stay warm they packed a recent copy of the NSN to remind them of all the good times back on Oahu’s North Shore. (How did they get Captain to smile for the photo?) To learn more about our OFF da Island photo campaign please turn to page 18.

Celebrate . . .

# Easter

“In Our Midst”  
Worship concert  
Sunday, April 1, 6pm  
Haleiwa Elementary

Good Friday Service  
April 6, 7pm  
Tech Park, 100 Kahelu

Easter Sunday  
Celebration Service  
Haleiwa Campus  
Sunday, April 8, 9am  
Haleiwa Elementary



For more information:  
621-9363  
www.newhopecentraloahu.org

## HAWAI’I DESERVES GMO FOOD LABELS

80% of processed foods in supermarkets have Genetically Modified ingredients (GMO’s)

Over 50 nations in the world require labels for GMO foods  
The U.S. does not

Our Keiki and ‘Ohana have eaten GMO food for over 15 years

As your Congressman I will support labeling and independent safety testing for GMO foods

# BOB MARX

for CONGRESS



HAWAI’I FIRST



Paid for by Bob Marx for Hawai’i

YOU NEVER  
KNOW WHO'S  
GOING TO  
DROP IN.

surfer [THE BAR]

*It's more than a bar. It's an original.*

**OPEN DAILY @6PM - CHECK OUT THE LINE UP:**

- APR 4** \*Talk Story Series ftg. North Shore legend Randy Rarick  
Hosted by Jodi Wilmott | Doors open at 6p – Show starts at 8p.
- APR 6** Paula Fuga & Mike Love  
\$10 tickets available at the Door or the Concierge/Show at 9p.
- APR 7** Vaihi Performing Live  
\$10 tickets available at the Door/Show at 9p.
- APR 13** Saltwater Heelers  
\$10 tickets available at the Door/Show at 9p.
- APR 20** Ranking Joe - formerly of Black Uhuru; Squidily Cole & Guidance Roots Band  
\$20 pre-sale/\$25 at the door. Tickets available at Surf n Sea and the Concierge.  
Show at 9p.
- APR 21** Meiko  
\$25 general admission/\$35 VIP. Tickets available at groovetickets.com,  
bampproject.com and all Local Motion shops/Show at 8p.

**MONDAYS.** Hawaiian Music >> Show starts at 7p | Non-Ticketed Event.

**TUESDAYS.** Kanikapila >> Show starts at 7p | Non-Ticketed Event with Drink Specials

**THURSDAYS.** Get Tubed >> DJ Baumer & DJ Twilight spinning from 8p until 2a | \$10 after 9p.

Space is limited, we suggest ordering tickets for shows in advance.

Surfer, The Bar is 21+ after 10p.

Visit [SurferTheBar.com](http://SurferTheBar.com) for our full event calendar and updates.

\*\$5 charitable donation suggested for Talk Story Nights.

FIND OUT  
WHO IS  
DROPPIN IN  
THIS WEEK.



## The Hale'iwa Family Dental Center, Ltd.



presents

### "Comfort Dentistry" including—

- Relaxation Glasses
- Television Glasses
- Caring Staff
- Special Medication to help you relax
- Laser Cavity Detection
- New Patients Welcome!

Your teeth are much too important to neglect.

**Call: 637-9652**  
for your reservation

We're conveniently located behind First Hawaiian Bank  
in the heart of Hale'iwa.

## Editor's Choice

### "The Visitor"

(Author Unknown)

One day, a man went to visit a church. He got there early, parked his car, and got out.

Another car pulled up and the driver got out and said, "I always park there! You took my place!"

The visitor went inside for Sunday School, found an empty seat and sat down.

A young lady from the church approached him and stated, "That's my seat! You took my place!"

The visitor was somewhat distressed by this rude welcome, but said nothing.

After Sunday School, the visitor went into the sanctuary and sat down.

Another member walked up to him and said, "That's where I always sit! You took my place!"

The visitor was even more troubled by this treatment, but still He said nothing.

Later as the congregation was praying for the presence of Christ to dwell among them, the visitor stood up, and his appearance began to change.

Horrible scars became visible on his hands and on his sandaled feet.

Someone from the congregation noticed him and called out, "What happened to you?"

The visitor replied, as his hat became a crown of thorns, and a tear fell from his eye, "I took your place."

Come ! and Join Us This  
"Easter" Morn

## SUNRISE SERVICE

April 8, 2012

7:00 a.m.

"Waiialua Community Association"

Message will be presented in  
"DRAMA"

by Pastor Luke Welch

(Singing, fellowship & refreshments)  
Haleiwa Evangelical Mission International  
For more info call:

590-9546

Camp Mokuleia, a sacred place for rest, recreation and renewal, invites you to a

## Sunrise Celebration of Easter

(Episcopal Eucharist)

**6:15 AM April 8**

**at Camp Mokule'ia**

68-729 Farrington Hwy. Waiialua HI 96791

Questions? E-mail:  
Eastervigil2012@gmail.com



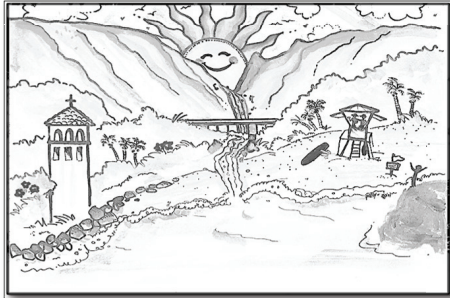
You are invited for "3 Days @ the Bay"

# NSCF's 35<sup>th</sup> Annual Easter Services

@ Waimea Bay Beach Park

**Good Friday  
Service**

7:00pm Fri, April 6



**Worship HIM  
Service**

7:00pm Sat, April 7

## SONrise Service

"THE RESURRECTION & YOU"

Mark 16:1-8

**6:30am Sunday, April 8**

FREE SHUTTLE SERVICE.

FOR THE KEIKI, ILLUSIONIST MIKE VILLORIA  
FOLLOWED BY FREE CONTINENTAL BREAKFAST

Brought to you by North Shore Christian Fellowship. Phone 808 637 6225

*Easter Brunch  
at  
Waimea Valley  
Sunday, April 8th*



Adults: \$38.00

Children (ages 4-12): \$19.00

One sitting: 10:00am-2:00pm

Reservations: 638-7766



"Da Best"



Come in and pickup  
your free PKB 5-0  
discount card!

**Collect a stamp with every  
purchase and SAVE BIG!**

**Plus.... RECEIVE A FREE \$5  
GIFT CERTIFICATE WHEN  
YOU COMPLETE YOUR CARD!**

**Call (808) 637-9795  
to place your Easter  
order today!**

**www.pkbsweets.com**

# Waiialua - The Saga of the North Shore

## Chapter 6 - Mo`o Laniwahine

By Kalewa

Amongst the legends, or “mo`olelo” of Waiialua we find mention of a procession of “lizards” passing through our neighborhood and one of them settling at Uko`a Pond (now, the long wet-land marsh between Loko`ea Pond and the Kawailoa Transfer Station). By all accounts her name was “Laniwahine”. It has been written that she lived in the pond and manifested herself as some peculiar fish and could travel to sea through a tunnel in the bottom of the pond. Some have stated that this great she-lizard possessed magic powers of various kinds and would appear in more recent times foretelling some great misfortune.

As with many legends, this one has its roots in the story of an actual person who came here from afar and chose to settle at a place that suited her. The Hawaiian legends are actually quite specific in many facts that have been translated into fantastic stories to entertain childish imaginations. Let us just take a look at the facts as the mo`olelo state them;

Laniwahine (Heavenly-Woman) arrived in a procession of others of her kind. Those included people with names such as “ Mo`oinanea”, “Keaomelemele” and “Puhiula”. She was seen at the end of the procession with “Alamuki”, her servant. She chose to settle on the plain of Lauhulu, just behind Uko`a Pond. She built a house that was considerably longer than any of the other habitations of her time. She became the matriarch of a line of descendants who seem to have died out by later historic times.

Uko`a Pond, like many isolated water-bodies, probably did have some types of fish that were found nowhere else and there is no reason to doubt that there was once a passage to the sea. Indeed, we do find fresh-water ulua in Loko`ea Pond today. But, if we dare to look at these mo`olelo, legends of Hawaii-nei, as oral history, rather than fairy tales, we must ask ourselves: “Where did these fantastic ‘Mo`o’ come from?”

The more elementary history books might tell us that the Hawaiian people arrived here some many years ago, traveled to and from elsewhere in Polynesia for a while then lived in isolation until Captain Cook arrived in 1778. Other books remind us that the Spaniards colonized Manila and traveled regularly between there and Acapulco, Mexico beginning in 1567. They also note that those massive gal-



leons had Filipino crewmembers as well as representatives of all the Christianized nations, European, African, American and Oriental. Do not forget the Dutch and English pirates who preyed upon them as well as the untold numbers of Asian fishermen and traders who became dismayed in storms to drift about the Pacific. (In an upcoming chapter we will visit one who drifted right into Waiialua Bay). Some writers have argued for other peoples crossing the Pacific with the capability of visiting these shores (Vikings, 15th Century Chinese, Lost Tribes of Israel, etc.). The simple fact is that the oceans do not separate people. They connect us.

Now, when you read of peculiar people in Hawaiian legends, especially in the next few chapters in this Saga, ask yourself just where they really might have come from.

### Quality Tile Crafts

“No job too big or small!”

Specializing in Ceramic Tile,  
Travertine, Marble, & Slate

Kevin Wilson

cell (808) 864-4985 office (808) 638-8492

www.QualityTileCrafts.com Free Est.



Join us Easter Sunday, April 8<sup>th</sup> for Brunch, Music by Kapena, and Festivities for the Keiki. Church Services will be held at 9am in the Pavilion with Pastor Ron Valenciana and Miss Hawaii 2011 Lauren Cheape.

ENJOY EASTER BRUNCH WITH YOUR O'HANA

From the scenic Kuilima Ballroom feast on favorites such as Salt Crusted Steamship Round with Au Jus and Cream Horseradish, Chinese Style Whole Steamed Fish in Ginger, Garlic and Chili Soy Butter Sauce, an Omelet Station, Clam Chowder, Sushi, Poke, Somen Noodles, Fresh Fruit, and plenty of desserts. We will have festivities for the Keiki from 10am to 12:30pm on the Kahuku Terrace, including an Easter Egg Hunt at 11:45.

To purchase brunch tickets call 293-6053.

turtlebayresort.com

Tickets are \$48 Adults and \$24 Children ages 4-11, and 15% service charge and 4.712% tax will be added to the final bill. Reservations must be guaranteed and tickets are non-refundable. Seating times: 10am, 10:30am, 12:30pm and 1pm.



**April 15**  
**5:00am**  
Kaiaka beach park




**North Shore**  
Marathon - Hawaii

**Run, Cheer, Have an Amazing time**  
more info online at [808racehawaii.com](http://808racehawaii.com)  
[808race@gmail.com](mailto:808race@gmail.com)

**Our PKB lucky EGG DRAW is back!**



**Come in between April 8 ~ 12 for a free draw!**

*(Limit one draw per person per day)*

**You might win one of the following wonderful prizes:**

- 5% OFF Coupon
- PKB Ballpoint Pen
- Free Cold Drink
- Sada's Malassada
- Snow Puffy
- Deli Sandwich
- Handmade Pie



**Take the Journey**



**Interactive Worship Experience**  
Sunset Beach Christian Church  
6-10pm on Friday April 6<sup>th</sup>

**GOOD FRIDAY**

808-638-0019 ◊ [www.sbccs.org](http://www.sbccs.org) ◊ 59-578 Kamehameha Hwy. Haleiwa, HI

## Olakino Maika'i

(Good Health)

by Naty Camit Hopewell

### Ciguatera Fish Poisoning: Part II

What are the most frequently reported fish with ciguatera? Different sources name different fish. The State Health Department lists roi, ulua, and palani as the most commonly reported. These three also appear on all the other lists. Other fish that appear on at least one list include grouper, red snapper, eel, amberjack, sea bass, Spanish mackerel, barracuda, jacks, wrasses, wild kahala, mepachi, papio, eel, kole, weke, manini and hapuupuu. My patient had ulua, which is a type of snapper. I know many of you have eaten these fish and have never become ill. The reason is that many areas on Oahu have no seaweed or algae affected by ciguatera. There are maps on the internet that color-code the most affected areas. On Oahu, areas next to Kaena Point and the Kaneohe Marine Base have higher rates of ciguatera.

Is there anything you can do? There used to be a test kit to check for the toxin, but production stopped in 2010 because of cost and low demand. Besides avoiding the suspected fish in high risk areas, never eat the head, viscera, gonads, liver or eggs of reef fish which contain higher concentrations of the toxin. Also, clean fish as soon as possible after caught or purchased. Remember, the toxin is not destroyed by cooking, freezing, drying, or salting.

If you develop severe symptoms, go to the emergency room where you can be observed and "supportive care" like intravenous saline can be provided. There is no antidote or specific treatment. Once you've been exposed to the toxin, repeated exposure will produce more severe symptoms. During the first six months after exposure, do not eat fish, nuts or drink alcohol or caffeine. These products can re-trigger symptoms.

Waialua, Baldwin and Island Pacific Academy continued from page 1

ploratory Academy and McKinley High School with a score of 48 to 41.

In an exciting three rounds, the Red Alliance took an early lead by winning round one. The Blue Alliance answered back, taking round two. In a classic match-up, it all came down to the final round. Waialua, the defending champions, led the Red Alliance to an early lead; however, McKinley High School picked up speed and began making basket after basket. As the seconds counted down, Baldwin and Island Pacific made their way to the bridge to balance and score the final blow to win the match, as the Blue Alliance maneuvered two bots from Punahou and West Hawaii to successfully balance on their own bridge and even the score. In an exciting last 15 seconds, Baldwin and Island Pacific teetered on the Bridge and their robots flipped over, effectively taking them out of the match. McKinley raced to make baskets, but could not hold on as the buzzer sounded, and the Red Alliance came out victorious.

"These teams were tough, but we came together and pulled through," Jandie Sabo, a member

of Waialua's Robotics team. "To come out on top again, with our Alliance, is a feeling like no other, especially since it is my senior year."

Attended by fans, families, educators and industry leaders, the FIRST in Hawaii Regional Robotics Competition sponsored by BAE Systems awarded several teams with honors that rewarded design excellence, competitive play, sportsmanship and high impact partnerships between schools, businesses and communities. Held at the Stan Sheriff Center on March 22-24, the 38 high school student teams competed to earn a spot at the FIRST Championship held April 25-28, 2012, in St. Louis, Mo. Representing Hawaii will be: Representing Hawaii at the 2012 FIRST Championships will be:

- Baldwin High School
- Island Pacific Academy
- Kealakehe High School
- Kohala High School
- Waialua High School

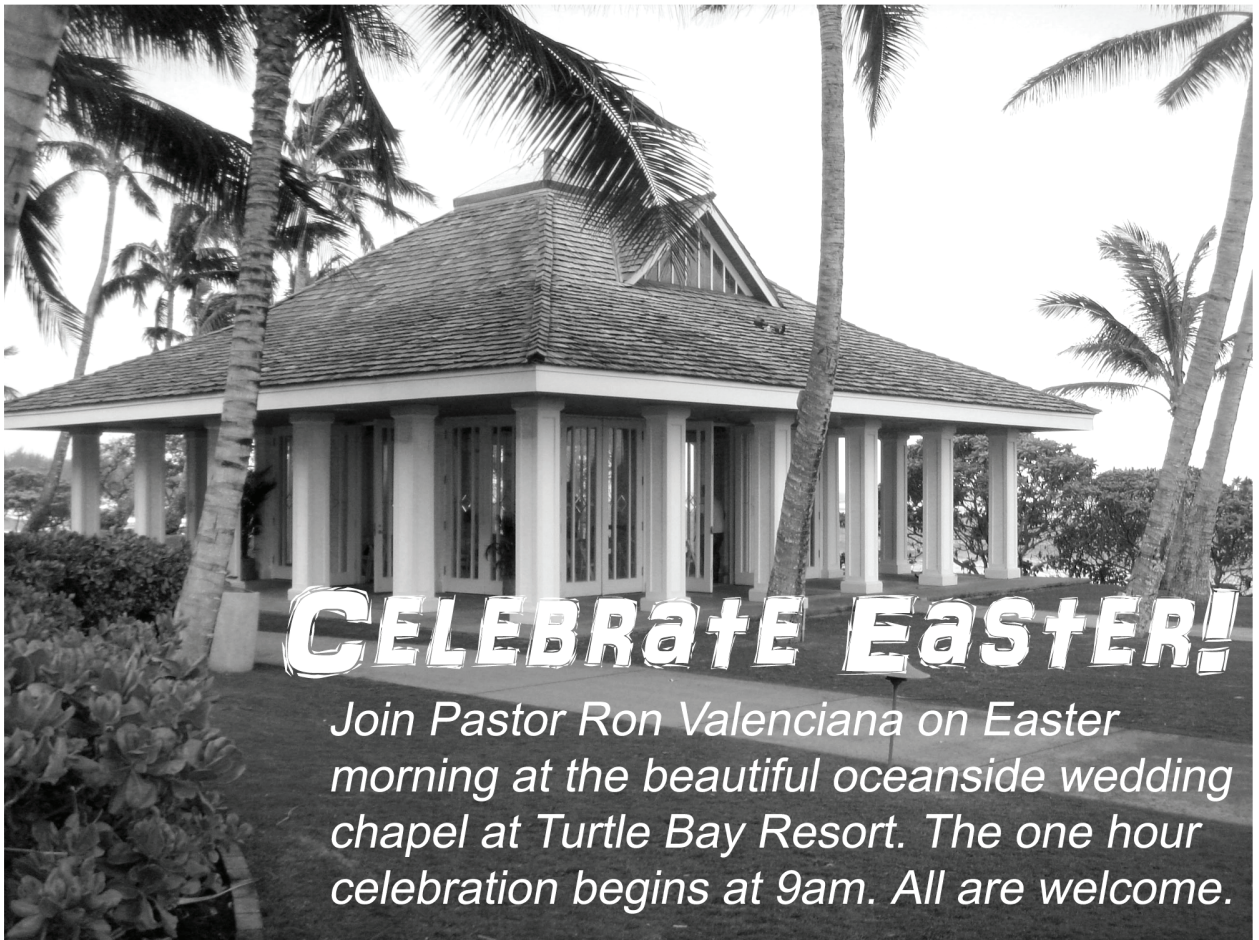
Several awards were given out after the competition.

The Quality Award (sponsored by Motorola) went to The Hawaiian Kids (#359), Waialua High School



Front to back: Joshua Heintz, Mr. Glenn Lee, and Yoshio Yoshizumi.





# CELEBRATE EASTER!

Join Pastor Ron Valenciana on Easter morning at the beautiful oceanside wedding chapel at Turtle Bay Resort. The one hour celebration begins at 9am. All are welcome.

**We've Moved**  
66-037 Kam. Hwy., Ste. 3  
Haleiwa, next to Growing Keiki



**Saccoccio & Lopez**  
ATTORNEYS AT LAW  
Serving Haleiwa since 1984

Bankruptcy  
Personal Injury • Criminal Law  
Landlord/Tenant  
Traffic Offenses • DUI

Family Law  
Adoption • Custody • Divorce  
Paternity • Guardianship  
Deeds, and Wills

**637-7611**  
VISA/MC Accepted

Paul & Nita



## GOT SURFBOARD?

The ONCE A MONTH CHURCH has assisted the launching of a Christian surf ministry in Haiti. We have pledged our first delivery of 25 good used surfboards. Can you help us reach our goal?

Got a dusty surfboard laying around? Donate it to us and we'll ship it to Haiti. Any size OK.

Call 342-3969 for more information. Mahalo!



*"Horses Healing with HEART"*

**Hawai'i Equine Assisted Reflection & Therapy**

\* Gain Motivation \* Improve Relationships \* Overcome Challenges \*  
\* Build Confidence \* Inspire Success \* Discover Effective Solutions \*

EAGALA certified, no horse experience necessary, safe, and FUN!

**FREE DEMONSTRATION MARCH 26TH!**

For youth, adults, families, and groups!  
Carina Cooper (808) 561-4184  
[www.HeartHorses.com](http://www.HeartHorses.com)





**Council Chair**  
**Ernie Martin**  
**Serving You in District 2**

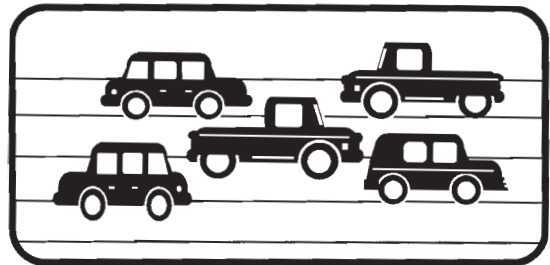
On Friday, March 16th, the Post Office at Waialae Kahala was dedicated as the Cecil L Heftel Post Office Building. District Manager Frank Santos ( pictured here with Congressional Staffer Adriana Besama Alghussein) welcomed an invited group of former congressional staff members, media associates and family members of the Congressman as the plaque was unveiled. The program highlighted the story of Heftel who was born in Illinois and attended Chicago public schools. After serving in the Army, he eventually making his mark in broadcasting industry as the owner of several radio stations across the United States. Local residents would remember him best as president of Heftel Broadcasting in Honolulu when he developed and guided the KGMB radio and television stations to their years of market dominance under his ownership. Heftel ran unsuccessfully in 1970 to represent Hawaii in the United States Senate and was elected in 1976 as a Democrat to the Ninety-Fifth Congress, serving until he resigned on July 11, 1986 to run as a candidate for governor. At the age of 80, Heftel was elected to the Hawaii Board of Education and served a four-year term. Cec Heftel died on February 4, 2010 in San Diego with his family at his side. Presiding at the ceremony and jointly responsible for the introduction and passage of the legislation that made the dedication possible was Congresswoman Colleen Hanabusa. Her remarks were a tribute to a man that leaves a rich legacy behind him, both as a political icon and as a business leader. Representative Hanabusa made a special point of introducing a member of her staff who helped draft the Heftel resolution that became Public Law 112-50 last November. Attending the ceremony along with her mother who is a teacher at Laie Elementary School was Congressional Staff Assistant Adriana Besama Alghussein. Now living and working in Washington D.C., Adriana graduated from Kahuku High School in 2003 where, in her junior year, she was the first Hawaii student ever chosen for the U.S. International Debate Team. She went on to graduate from Mount Holyoke College in Massachusetts with a major in International Relations and Economics. Commenting on the dedication ceremony, Adriana said "it was an honor to have the opportunity to research Congressman Heftel's life and professional career. His dedication to public service was inspiring and his passion for helping others was apparent. I particularly enjoyed meeting his former Congressional staff members at the Cecil L. Heftel Post Office dedication ceremony.



Through my many conversations with his friends, family and colleagues and my research, it was abundantly clear that Mr. Heftel made a lasting impact throughout his life and continues to do so to this day." The dedication of the Cecil L. Heftel Post Office was a tribute to the contributions of a political statesman. The integral role played by a Kahuku graduate is just one example of the positive impact of the dedicated teachers at Kahuku High School like Adriana's debate coach and English teacher Winnie Graham, who everyday provide their students with the building blocks of a solid academic foundation and love of learning that can lead to their success and fulfillment.

## DONATE YOUR VEHICLE

running or not



### Once A Month Church

a 501c3 charity serving the North Shore

Over 150 good used cars GIVEN  
to needy individuals possessing  
valid driver's license past 5 years.

342-3969  
for more information

# We're shaking things up!

AUTO LOAN RATE OF **4.50% APR\***

Steer yourself in the right direction and head to Waialua Federal Credit Union for an amazing deal on auto loans! We'll make it easy for you to save cash on your next vehicle purchase with loans that feature:

Rate of  
**4.50% APR\***

Terms for up to  
**6** years  
(seven if the financed amount is over \$25,000)

Financing for up to  
**100%**  
of the dealer invoice

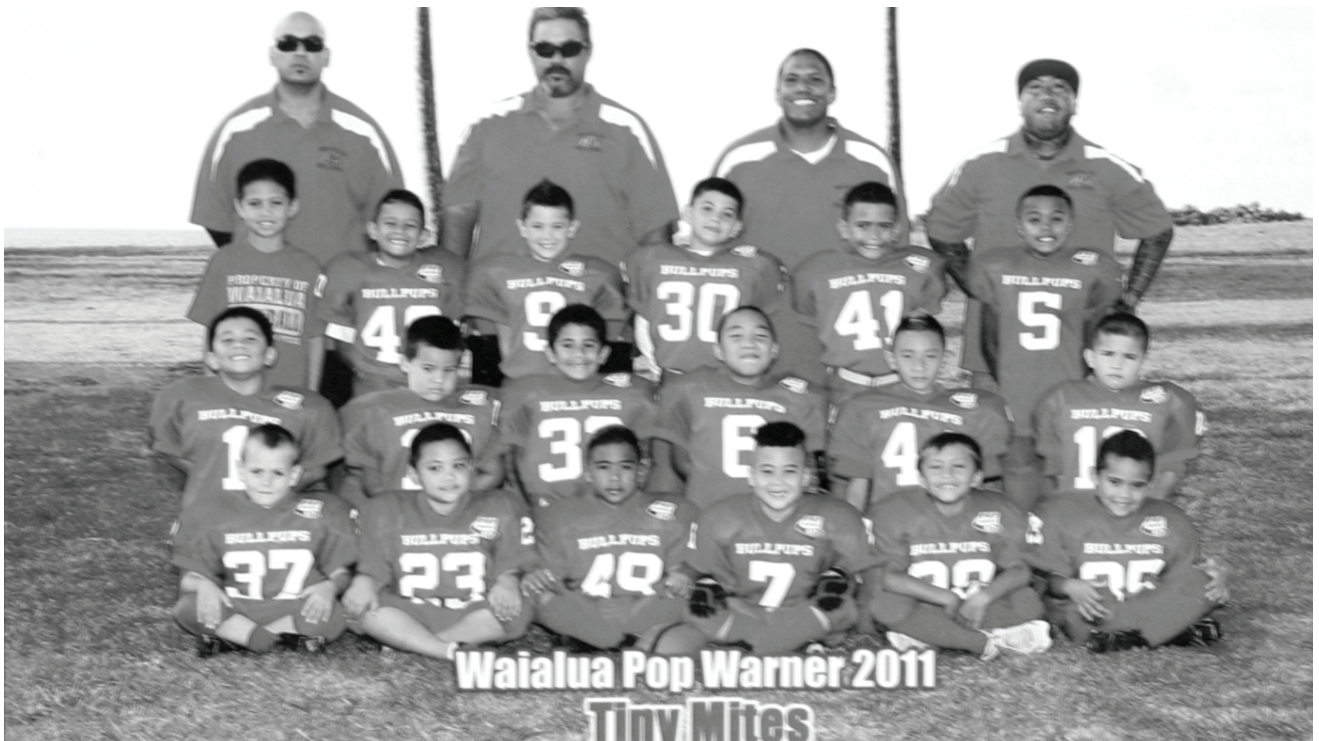
Plus, our no-hassle loan application and fast approval process mean you'll be driving home your dream machine in record time! So call or stop by today to get pre-approved—and see firsthand how we're shaking up loans and driving down rates!



## WAIALUA FEDERAL CREDIT UNION

(808) 637-6737 • (808) 637-5980 • [www.waialuafcu.com](http://www.waialuafcu.com)

\*APR=Annual Percentage Rate.



Head coach Kamaki Lacar wants to thank God for a great season. He was honored to coach the first time ever Waialua popwarner "Tiny Mites Football Team." Mahalo to president Melanie Lee, staff Tony Ozoa and Veronica Mock. Also, mahalo nui loa to all the Tiny Mites ohana for showing their love and support for our coaching staff and players.

Pictured left to right: (front row) Makai Smith, Toa Tufele, Bryson Yuzon, Silas Suenaka-Manners, Tyson Apau, Landon Teixeira. (second row) Kaisa Lemau, Kapena Gormley, Kalei Kahana-Kelii, Justus Sagocio, Austen Andrade, Kamuela Kupihea. (third row) Chadon Teixeira, Cayden Pia, Seth Stanek, Kaumana Pololu, Makana Lacar, Zane Santiago-Sanborn. (back row) Asst. Head coach John Tufele, Asst. coach Kingsley Teixeira, Head coach Kamaki Lacar, Asst. coach Maka Sagocio.



**A Message From  
State Representative  
Gil Riviere**

Aloha North Shore,

During election years, politicians are typically known to play it safe and avoid controversial issues. Legislation may be moving quietly past the public this year, but there is plenty of controversy in the Capitol over efforts to create a State Bank and to overturn important environmental protections.

The Legislature is rushing headlong towards repealing environmental laws in the name of fast tracking government projects. I support improving government efficiency, but I very much oppose blanket exemptions for large construction projects that could have significant, adverse environmental impacts.

Most directly under attack is the Special Management Area Permit which provides early disclosure of potential impacts to our coastlines. Several bills exempt airports, harbors, and other state lands from SMA permits, shore line setbacks and other permitting standards. Some allow the Governor to waive the environmental review process completely

for certain government projects.

The greatest mistake in all of this is that the State Office of Environmental Quality Control is fully staffed, with no backlog, waiting to assist state agencies on guidance of actions that could be exempt. Exemptions are available, but somebody needs to look at the proposed action. Some agencies are unwilling to make decisions on exemptions; they now want permanent exemptions, all the time, no matter the action. This would be very bad policy!

This heavy shift away from environmental protection is a major policy question that is not getting as much public discourse as it should. Indeed, recent news articles have completely missed the topic, noting only that the Legislature is moving forward on streamlining state construction.

I believe the public remains committed to preserving and enhancing both our environment and our economy. It does not have to be one or the other. Senate and House versions of legislation will be completed in a few precious weeks and conference committees will rapidly revise legislation without public input before final votes and session closure on May 3rd. Now is the time to speak up, folks!


I am hopeful that enough concerned residents will take a moment to send an email to their Representative and Senator to tell them that the people of Hawaii still believe in environmental protection and that they do not support blanket exemptions. Contact information for all House and Senate members and legislative details are available at [www.Capitol.Hawaii.Gov](http://www.Capitol.Hawaii.Gov)

Please feel free to share your opinions with me by sending an email to [RepRiviere@Capitol.Hawaii.Gov](mailto:RepRiviere@Capitol.Hawaii.Gov), calling my office at 586-6380, sending a fax to 586-6381, visiting my website at [www.GilRiviere.com](http://www.GilRiviere.com). Info, or stopping by for coffee and a snack in Capitol Room 319. Mahalo.

Lili'uokalani Protestant Church cordially invites you to our Easter Sunrise Service, Sunday, April 8th at 6:30am. Come lets welcome the sunrise on the steps of our church, with majestic Mt. Kaala overlooking, in song and praise, and then come into our sanctuary to celebrate and worship together! Then join us for our Easter Festival services at 10:00am.

**CASH**  
FOR YOUR  
**ROLEX**  
GOLD & DIAMONDS  
**TODAY**

OUR BUYERS ARE HERE ON THE PREMISES



FROM OUR RETAIL AND COLLECTOR DIVISION

**TOP DOLLAR**  
FOR ROLEX AND OTHER SWISS WATCHES, DIAMONDS, GOLD  
**ALL THIS WEEK**

**CALL 943-6210** PACIFIC DIAMOND WATCH WHOLESALERS  
1356 Kapiolani Blvd.

**DRAFTPLANS HAWAII**

- Over 10,000 floor plans & blueprints available for purchase online. Gather ideas for your own design.
- Drafting Service available for new home designs, additions, renovations, decks, fence, rock walls, etc.
- Free property specifications & title search info.

[www.draftplans.com](http://www.draftplans.com)

Call for free estimates:  
**265-0035**




# St. Michael Parish in Waialua



wishes you a  
joyous & inspiring  
Easter Holiday!

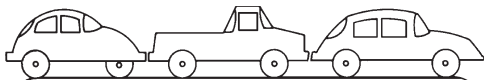
Our Lord and Savior's death and resurrection demonstrates the unlimited grace & power of Jesus Christ.

"For God so loved the world that He gave His only begotten Son" St. John 3:16  
May the Father's love over-whelm you this holiday season.  
—Father Chris Keahi & St. Michael Parish



67-390 Goodale Ave., Waialua  
Call for our Easter holiday schedule (808) 637-4040

## CAR WASH !



Starting at \$5

Saturday, April 7, 2012  
8am to 2pm

Waialua Community Assoc. in Hale'iwa

Proceeds to benefit the North Shore Food Bank  
Sponsored by the Once A Month Church  
(to volunteer or donate call 342-3969)  
OK to bring food donation too

## Project Graduation fundraiser

Saturday, April 14th 8 A.M. – 2 P.M.

Please come by the Waialua Community Association and have your vehicle washed by the parents and students of the Waialua High School Class of 2012.

At this fundraiser, Get a FREE Car Wash and raise funds \$\$\$ for yourself too! Island Gold and Silver and the Honest Gold Guy Oahu will be at both events. Come prepared and while you are having your car washed take any unwanted, broken or unworn gold, silver, platinum items or coins to the Gold Support Booth for a FREE appraisal. If you decide to sell any of your items, not only will you be paid top dollar for them on the spot but Island Gold and silver will pay for your Car Wash and donate an additional 10% of any money you earn to the Waialua Grad Night Fund.

Parent Boosters are also selling the Isle Discount iDards for \$20. Visit [www.islediscount.com](http://www.islediscount.com) to see all participating sponsors.

Please call Sharlynn Ash at 808-927-0837 if you would like to purchase an iDcard.

**We Pay You  
\$100  
CASH & FREE  
TOWING  
for unwanted vehicles  
(complete)  
636-7183  
North Side Towing**



## KEAC presentation of \$18,000 check to Kahuku Int. & High School

From left to right: Front row: MaryAnne Long, Co-Founder Kahuku.Org, (behind) Debbie Barenaba, Kahuku Film Club sponsor & Kahuku Art/Digital Media teacher, Noel Morris: intern, Allbett Wilkens: KEAC volunteer, Alicia Esche: KEAC program manager, Donna Lindsey, Principal of Kahuku Intermediate & High School, Reggie Torres: head football coach, Keoki Wallace: President KEAC, Tom Cross, KEAC Board member. Back row: Representatives of the football team: Kuj Tapusoa, Chan Mapu, Kawe Johnson, Toiva Tufaga, John Waa, Rashaun Falemalu, Nico Langley. (Photo by Daniel Russell)

## KAHUKU.org donates \$18,000 to Kahuku Int. & High School!

Community spirit and talented business savvy teens combined to give Kahuku Intermediate & High School another winning combination. Kahuku.org, the on-campus store and website that sells Red Raiders' merchandise was able to donate \$18,000 to the school.

"The community came together to produce record sales," said Alicia Esche, the business manager of Kahuku.org. "Obviously our 'best seller' was the Kahuku football State championship T-shirt."

"Without the community buying Kahuku-logoed items from Kahuku.org, we would not be able to raise money for the school," said MaryAnne Long, the co-founder of Kahuku.org. Dollars spent at Kahuku.org are in turn given to the school to help the students of Kahuku High School, she explained.

The Kahuku.org store is located behind the Kahuku library on-campus and offers a wide variety of T-shirts, jackets, hats and Red Raiders' logo items in infant sizes to 4X. The store has a staff of eight, but this year Esche got additional student volunteer help from teacher Debra Barenaba's Art & Communication class and the Kahuku Film Club each doing volunteer service projects.

The Kahuku art and Film Club students worked on graphic designs for posters, a Digital Media Campaign, product placement of Kahuku.org shirts in

two videos, Branding at the State Capitol, Social Media Marketing, and sales at strategic locations outside the school. Three students were recognized for their exceptional enthusiasm and outstanding volunteer contributions: Andrea Pouesi, Peka Siilata and Nico Langley.

In addition, Kahuku.org has been successful because the school and community have supported its role as a provider of Career Pathways for students, explained Long. Kahuku.org is a division of the non-profit Ko'olau Loa Educational Alliance Corporation (KEAC).

"The Kahuku.org business model not only benefits the school, but also gives student interns valuable experience in real-life business skills," said Don Sand, the Kahuku Film Club mentor and the director of Media Services for KEAC. "In order for our youth to be competitive in commercial art and digital media jobs, we should give our students many opportunity early on to find their gifts and develop their creative talents," he concluded.

With the strong support of the Community, alumni and visitors buying their Kahuku-logo products, and budding entrepreneurial students marketing them, 2012 should be another winning year for Kahuku.org.

# ATTENTION!

## All Medical Related Businesses Our 2012 MEDICAL DIRECTORY will be published: May 2, 2012 (revised date)

**\*Ad deadline is: April 19, 2012**

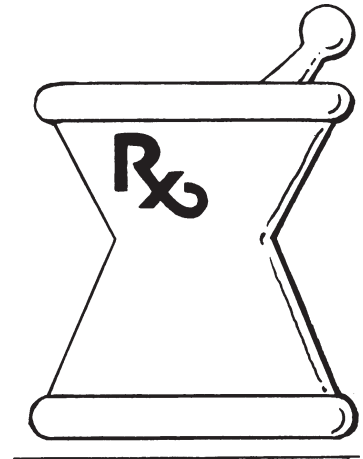
Who should advertise?

*Doctors, Dentists, Clinics, Hospitals, Pharmacies,  
Optometrists, Chiropractors, Physical Therapists,  
Massage Therapists, Insurance Companies, Lawyers,  
and all Medical Care Professionals.*

Call today to reserve ad placement

# 637-3138

North Shore News  
or email: [NShoreNews@aol.com](mailto:NShoreNews@aol.com)



### Your Prescription for Success



## Upcoming

# 2012

## • Special Editions • 12 Page Inserts

### PUBLICATION DATE

### DEADLINE DATE

May 2	Health & Wellness Directory	April 19
May 30	Congratulations Graduates	May 18
June 13	Hanapa'a Fishing Tournament Program	June 1
July 25	Home Improvement Directory	July 13
November 7	Triple Crown of Surfing Program Magazine	October 1
December 12	Christmas Edition	November 29

Call 637-3138 or 342-3969 for discount information  
or email: [NShoreNews@aol.com](mailto:NShoreNews@aol.com)

# BULLETIN BOARD



Featuring the largest selection of certified organic produce on the North Shore. No panic...ours is organic. Open 7 days. Mon.-Sat. 9am-6pm. Sun. 9am-5pm

66-445 Kam. Hwy  
Haleiwa, Hawaii 96712  
Next to the Post Office  
808-637-6729 • 808-637-1922 fax



**DR. PORTER TURNBULL**  
Chiropractic Orthopedist  
(808) 638-8740  
Appointments available Mon.-Sat. (evenings by appointment)

- Industrial accidents & auto injuries
- Sports injuries • Spinal care
- Safe, Effective, and Gentle

## N-C PLUMBING & SUPPLY

Cont. Lic. No. C-8913



- RESIDENTIAL & COMMERCIAL SALES & SERVICE
- CONTRACTING & DESIGN • HOME PLUMBING SERVICE
- PLUMBING FIXTURES, HEATERS • FREE ESTIMATES

Nestor P. Calilao (Owner) Bus: 637-8662  
P.O. Box 769 Res: 638-5157  
Waialua, HI 96791 Cellular: 372-8718

email: nncplumbing@hawaii.rr.com

*When it's time to tie the knot...*

[www.hawaiiweddingminister.com](http://www.hawaiiweddingminister.com)

informal beach weddings a specialty

(808) 342-3969

## North Shore Sports Therapy MASSAGE

Tele: 808-778-8443

Insurance Accepted/No-Fault, Work-Comp, ASH...

Cash Rate: \$65.00 per hour  
Pre-Pay Special: 5 treatments @ \$55. each!!

New Office @ the Old Koga Theatre  
66-935 Kaukonahua Road, Waialua



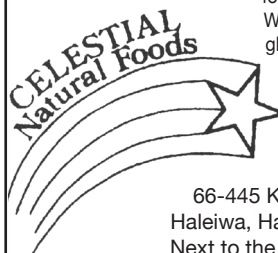
Robert Oakley Owner  
ASE Certified Master Mechanic Waialua, Hawaii  
Computer & Electrical Specialist (808) 330-0459



## THE RAINBOW BALLOON MAN

864.9599

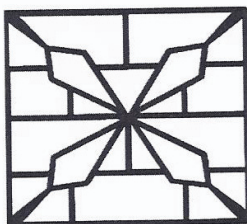
albertnakanishi@aol.com  
Parties • Special Events



Specializing in vegetarian foods, vegan foods, whole foods, organic food. Wheat free, dairy free, raw foods, gluten free. A complete selection of natural foods for 37 years. Make earth day, everyday.

Open 7 days.  
Mon.-Sat. 9am-6pm.  
Sun. 9am-5pm

66-445 Kam. Hwy  
Haleiwa, Hawaii 96712  
Next to the Post Office  
808-637-6729 • 808-637-1922 fax



**GROVER MASONRY**

**Rick Grover**  
(808) 983-9331 cell  
(808) 638-8120 office  
rick@grovermasonry.com

License # C-18302



**COWPER CONSTRUCTION**

GENERAL ENGINEERING CONTRACTOR

Full Service Sitework Contractor  
Septic Systems & Tanks  
25 yr. exp.

Michael Cowper 638-7200  
cowperhawaii.com





The North Shore News is published every other Wednesday and mailed free of charge to all North Shore homes and businesses. Extra copies may be obtained at our office.

**PRESS RELEASE POLICY:** Submit press releases in person or by fax, mail or email to Editor, North Shore News, P.O. Box 1117, Haleiwa, HI 96712. Please type your releases and keep them shorter than 200 words unless they are of an unusual news interest. Releases should be viable news stories and are published on a **space available basis only**, with priority given to those received in our office first. You may attach photos. We are not responsible for the return of any photos. All materials are submitted at owner's risk. We reserve the right to edit and/or refuse all submissions including advertising.

**EDITORIAL POLICY:** We welcome articles and letters from our readers. Letters to the Editor are published on a space available basis only and preference is given to shortness of length, and quality of content. We prefer to run not more than one letter, per person, per 6 month period. Letters subject to edit.

Views expressed by our contributing writers and advertisers do not necessarily reflect the view of the management and staff of the North Shore News. All rights reserved. Reproduction in whole or part without permission is prohibited. © 2012.

**PUBLISHER/EDITOR**  
RON VALENCIANA

**TYPOGRAPHY**  
DOWNTOWN GENERAL STORE

**BOOKKEEPING & CLASSIFIEDS**  
LINDA SEYLER

**CONTRIBUTING WRITERS**  
RON VALENCIANA,  
NATY HOPEWELL

**STATE SENATOR DONOVAN DELA CRUZ**  
**CITY COUNCILMAN ERNIE MARTIN**  
**STATE REPRESENTATIVE GIL RIVIERE**

**For Advertising Rates,**  
**call**  
**637-3138**

# CLASSIFIEDS

♥♥Need a minister for a North Shore wedding? Hundreds of knots tied for happy couples on Oahu. Simple beach-side ceremonies to formal church or chapel services. I'll make your special day an extraordinary memory. Call & leave clear message with phone number & possible date, time & place. 342-3969. Also: Vow renewals, house blessings, baby luaus.

**PAUMALU ELECTRIC**  
David C. Hancock  
638-9054 / Lic#C18074

**SHORE ELECTRICAL SERVICE**  
New Const-Remodels  
638-0049 / Lic#C20777

LGR Construction  
Remodel • Repair • Design  
Drafting • Painting • Small Jobs  
Affordable rates. 343-4453/Lic#26759

**Dog/Cat Nail Trimming**  
at your home only \$15.00  
Call Julie 637-5395

**Aloha Computer**  
PC Repair/Virus Removal  
Fax/Copy/Internet Access  
372-2667 or 237-4558

**Lawn Care For You**  
Mowing, Trimming, Light Hedging  
Call Thomas 637-5839

**Ross McGerty BC24080**  
**349-6359 • 637-9539**  
From Waiialua to Sunset  
**Make Me the First Call**  
**for Home or Rental Repairs**  
**or Renovations**

**EXPERT ELECTRICIAN**  
Fans, emergency services, etc.  
Jim Richards 371-9369

**PARADISE PLUMBING INC.**  
New Const • Repairs • Remodels  
808-368-1473 / Lic. 29856

**BEACH PLUMBING & ROOTER**  
Over 30 years experience  
Call Larry 637-6400

**Handyman Services**  
Remodeling, Carpentry, Floors,  
Concrete, all parts of Construction  
Call Bob "The nicest guy in the  
business" Ph. 282-2812

**Haugan Construction LLC**  
Build & Repair • Big & Small  
Let's Talk  
Steve 542-9269

Nutrition Expertise  
Cooking advice & demos  
Whole foods nutritionist  
Crystal Bossola 954-9495

**HARVEY'S REPAIR, LLC**  
24 hrs Towing Service  
*Specializing in opening*  
*locked car doors*  
Call any time 478-0333

**BOW WOW BUNGALOWS**  
Licensed Boarding Kennel  
North Shore, Oahu  
Reasonable Rates  
Ph. 637-2562  
**These Dogs Have Fun!**

**PAINTING**  
INTERIOR, EXTERIOR  
FREE ESTIMATES  
OAHU PRECISION PAINTING  
LIC #31602  
**SKIP WUNDERLICH 220-9083**

N.S. Property Maintenance  
Power wash, painting int/ext,  
deck repairs, extensions,  
fences, gates,  
carpentry & remodels.  
Maintenance, lawn & yard.  
Chris 381-5213/638-0659

Happy  
Easter!

**BIKRAM YOGA**  
See our new studio, anti-  
microbial, anti-bacterial  
carpet and more!  
*Please call for class schedule*  
**637-5700**

**North Shore Pumping**  
Cesspool & Septic Pumping  
Complete Plumbing  
Services, new & repairs  
Lic. & insured #25567  
638-0900 • 291-5089

**B.E. CONSTRUCTION**  
Dumptruck & Backhoe  
Services  
Equipment, dirt, rock,  
green waste hauling  
in and out  
**DEMOLITIONS**  
BRUCE ESCHÉ 783-9510

**SHIATSU • LOMI**  
Aromatherapy  
Milica Barjaktarovic  
Lic # MAT8348  
351-0848  
HumanRemodeling.com

**SEPTIC SYSTEM**  
**QUESTIONS?**  
Free Initial Consultation  
Bear Engineering  
Nathan M. Toothman P.E.  
(808) 754-3579  
www.BearEng.com

**ANGELS**  
**PLUMBING**  
Repairs  
Remodeling  
Renovation  
**638-7878**  
Lic. #C12004

**Next Issue - April 18, 2012**  
**Deadline Date-April 5, 2012**

**SUBSCRIPTION RATES**

If you live outside the North Shore area on Oahu, neighbor islands, or the mainland, you can subscribe to the North Shore News. Our annual subscription rate is \$35 for 25 issues delivered by standard bulk mail (2-3 weeks), or \$55 for 25 issues delivered by first class postage (3-5 days). Call our office for payment information at (808) 637-3138.

**HOW TO CONTACT THE NORTH SHORE NEWS**

Letters to the Editor, and other items submitted for publication consideration may be sent to us via:

MAIL: P.O. Box 1117, Haleiwa, HI 96712

E-MAIL: NShoreNews@aol.com

FAX: (808) 637-8862

PHONE: (808) 637-3138

# CLASSIFIED ADS

[hawaiiweddingminister.com](http://hawaiiweddingminister.com)

**342-3969**

**31 years experience**

**Offshore Plumbing, Inc.**  
Commercial • Residential  
• Septic • Solar • Design

Mike 630-1407  
Steve 371-3451  
Lic #C28113

Fax 638-9022

[offshoreplumbing@yahoo.com](mailto:offshoreplumbing@yahoo.com)

**BOBBY'S BODIES**

Tuesday evenings at 5:00 p.m.

- Body Toning

Friday mornings at 9:00 a.m.

- Cardio Pump/Fat Burner

For more info: call Bobby, owner of BOBBY'S BODIES at 637-4150

**Lisa Carley Skin Care**

**637-9400**

[lisacarley.com](http://lisacarley.com)

67-292 Goodale Ave. #104  
Waialua Shopping Center

**Your Clean Home**

Specializing in residential/vacation homes & property management.

Experienced/reliable and affordable. Green cleaning safe for your family and our planet!!!

**808 638-0262 or 779-6604**

**THE LAWN RANGER**

Lawn Maintenance  
no yard too hard  
no lawn too far gone  
We mow betta  
**258-6439 Dan Fatchett**

**Marianne Abrigo, Properties**

Specializing in -  
North Shore  
Real Estate

Ask for our list of available properties and/or a free market analysis.

**Marianne M. Abrigo**

"Realtor since 1974"

Office

**637-3511**

Fax

**637-0777**

Email

[mabrigo222@aol.com](mailto:mabrigo222@aol.com)

**North Shore Tax Preparation**

40+ experience, Enrolled Agent Individuals, E-file, direct deposit Call Jeannine Poling **638-5130**

**GERMAN CAR SERVICE**

Professional-Qualified Technician  
Call Gary  
**637-6800**

**HELP WANTED**

**BUSSERS/SERVERS**

Pizza Bob's in Haleiwa is looking for BUSSERS/SERVERS. Experience preferred. Apply in person at 66-145 Kam. Hwy.

**COOKS/KITCHEN HELP**

Pizza Bob's in Haleiwa is looking for kitchen personnel. Experience preferred, but will consider training the right people. Apply in person at 66-145 Kam. Hwy.

**Retail Sales Surf & Sea**

Hawaii's Ocean Sports Headquarters is always looking for hard working, energetic people to become a part of our sales team. Good pay, bonus, benefits. Ocean sports experience and/or bilingual a plus. Apply in person daily 9am-7pm  
**62-595 Kam. Hwy., Haleiwa**

**FOR SALE**

2000 Ford Mustang Convertable  
72k miles. Silver body, black top, 5 speed. Excellant condition \$3500. Call 342.3969.

**AKC Russian Wolfhounds BORZOI pups 6m/3f**

[kawailoaborzoi.blogspot.com](http://kawailoaborzoi.blogspot.com)  
**808-447-9349**

**Save Sea Turtles Use Reusable Bags**  
[www.b-e-a-c-h.org](http://www.b-e-a-c-h.org)

**MISCELLANEOUS**

**FOUND**

Ladies watch found on 3/21/12 on Mahinai upper part of Crozier. Lv message 282-0419

**TAP DANCING**

monday 6:30 p.m.  
great fun, great exercise, and great for the gams!  
north shore art center  
more info 637-2562

**REUNIONS**

The NSN is happy to publish your school or family reunion Free of charge.

Email your announcement to [NShoreNews@aol.com](mailto:NShoreNews@aol.com).

**OFF da ISLAND**

Are you leaving Oahu on vacation or business? Do you live on a neighbor island, the mainland or foreign country and subscribe to the North Shore News? Try send us a photo of someone in front of a sign or landmark holding a copy of the NSN. Email your photo along with the person or persons' name, community of residence, telephone number and photo location to: [NShoreNews@aol.com](mailto:NShoreNews@aol.com). Or, mail to OFF da ISLAND Photo, North Shore News, P.O. Box 1117, Hale'iwa, HI 96712. We cannot return photos so please send us a copy. Photos received become the property of NSN. Preference and priority will be given to emailed photos.

**Don't throw away that old BIKE!**

Donate it to Yikes Bikes

A non-profit program at Waialua High & Intermediate School

**637-8200**

M-F • 8 a.m.-3 p.m.

**2012 Medical Directory North Shore News**

Publication Date: May 2  
Deadline Date: April 19  
Reserve your space 637-3138 or email: [NShoreNews@aol.com](mailto:NShoreNews@aol.com)  
**Special 25% Discount**

**E Kookua Kakoue Malama I Kawaiola**

[www.cleanwaterhonolulu.com](http://www.cleanwaterhonolulu.com)  
Environmental Concern Line  
**527-5091**  
City & County of Honolulu

**Keep it Country To report ILLEGAL VACATION RENTALS**

call 768-8159 or 768-8118  
You will remain anonymous  
**Illegal Vacation Rentals are ruining the North Shore**  
[www.savenorthshoreneighborhoods.com](http://www.savenorthshoreneighborhoods.com)

**Business Services Center**

Fast & convenient fax, copy, scan, computer/internet, laminate, etc.  
Across from Haleiwa post office.  
North Shore Chamber of Commerce  
**637-4558 or 342-8557**

**North Shore Farmers Markets**

Haleiwa: 9 a.m. to 1 p.m. Sundays, at traffic signal on the old Kamehameha Hwy at the bypass road.

Waialua Sugar Mill: 8:30 a.m. to noon Saturdays & Wednesdays 4:40 p.m. to 7:00 p.m.

North Shore Country Market: 8 a.m. to 2 p.m. Saturdays, Sunset Beach Elementary School, 59-360 Kamehameha Hwy.

Laie: 11 a.m. to 2 p.m. June 24, July 8 and 23, Brigham-Young University-Hawaii, 55-220 Kulanui St.

**Art Classes for everyone**

at North Shore Art Center and Jaymarzart Gallery  
Come Play and Come Teach weekly classes adults/children learn any medium, your style, your pace oils, pastels, water colors, fiberarts, clay, mosaics and more!!!

Book at ART PARTY adult or children.

For more info call [jaymarr@637-2562](mailto:jaymarr@637-2562)

**IGREJA EVAN. BRASILEIRA**

Domingos 10:00 am  
Quartas 7:30 pm  
Sextas-Culto de Oraçao 7:30 pm

Voce e o nosso convidado especial

Behind Hale'iwa Post Office  
637-5566  
Pastor Luiz • 638-2212

**BEACH CLEAN UP**

Chun's Reef - 10 a.m.

**637-2211**

Last Saturday of every month  
[adoptabeachhawaii.org](http://adoptabeachhawaii.org)



# Happy Easter! MALAMA Market

MALAMA MARKET HALEIWA:  
OPEN DAILY 7 AM-9 PM  
808.637.4520

MALAMA MARKET MAKAKILO:  
OPEN DAILY 6 AM-10 PM  
808.672.9955

Valid Dates:  
4/4/12-4/10/12

Fresh Strawberries  
16 oz.

2/\$7



Tropicana Orange Juice  
Selected Varieties,  
59 oz.

\$3.99



Spam Luncheon Meat or Hormel Compleats  
Selected Varieties, 10-12 oz.

2/\$5



Farm Pack Eggs  
Mainland, Grade A, Shell Protected, Large, 18 Pk.

2/\$7



Farmer John Half Ham Shank

\$1.99 PER LB.



Best Yet Charcoal  
Selected Varieties, 16.6 lbs.

\$8.99



8 Piece Fried Chicken  
2 Thighs, 2 Breasts,  
2 Drumsticks, and  
2 Wings

\$9.99 EACH



White Shrimp,  
51/60 ct.  
Previously Frozen

\$5.99 PER LB.



Scott Napkins  
400 ct.

\$3.99

Frito Lay Planet Lunch Brand Chips  
Selected Varieties,  
19-20 ct.

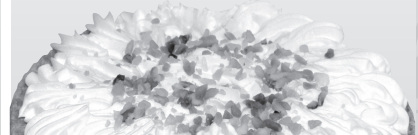
\$6.79



Chef Made

\$11.99 EACH

Cream Pie  
Assorted Varieties



Coca-Cola  
Selected Varieties,  
12/12 oz.

3/\$12



Breyers Ice Cream  
Selected Varieties, 48 oz.

2/\$7.50



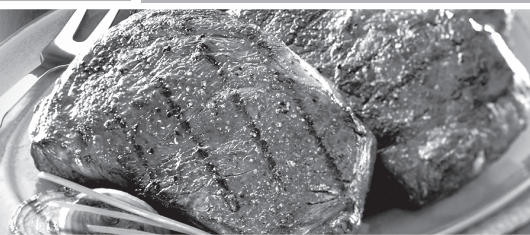
Heineken, Corona,  
Sierra Nevada, or  
Samuel Adams  
12 Pk. Bottles

\$13.99



THURSDAY

INCLUDES:  
7-8 oz. Steak  
Rice • Tossed Salad • Drink



Grilled Steak  
LUNCH  
\$6.99

Hawaii Beverage Fee of 1¢ per can or bottle will be added to purchase price at checkout. An Additional Hawaii Deposit fee of 1¢ will be charged for all specially marked beverage containers.

Limit five units (mix/match) per purchase, unless otherwise specified. We reserve the right to limit quantities. No sales to dealers. Prices plus applicable state tax. Hawaii EBT cards welcomed.