



"E Ala Na Moku Kai Liloloa"

Waialua's Newest Crossfit Gym - "BOX" Grand Opening

See Pages 16 & 17



NORTH SHORE NEWS April 2, 2014 VOLUME 31, NUMBER 7



Kamehameha School-Hale'iwa Preschool. Photo & article by Blake McElheney

Aloha...Malama...Kuleana...Kamehameha Schools – Hale'iwa Preschools

At its meeting last night on March 25, the North Shore Neighborhood Board voted unanimously to request that the Trustees of the Kamehameha Schools (KS) keep the beloved Haleiwa Preschool open.

It was announced at the meeting that Senator Clayton Hee and City Council Chairperson Ernie

Martin also strongly support keeping the Preschool open and that they will be taking immediate steps to support the children and the community such as: 1. personally reaching out to the KS Trustees to request that the Preschool be kept open and 2. examining whether funding could be allocated to as-

sist the community in making any necessary repairs to the Haleiwa Jodo Mission (the existing location of the Preschool).

Numerous students, families, supporters, and Kamehameha Schools alumni attended the meeting to express the value of

Continued on page 2

PRE-SORTED STANDARD U.S. POSTAGE PAID Honolulu, Hawaii Permit No. 1479	Hale'iwa, HI 96712 66-437 Kamehameha Hwy., Suite 210
--	---

PROUDLY PUBLISHED IN
Hale'iwa, Hawai'i
Home of Kamehameha
Schools-Hale'iwa
Preschool

Continued from page 1

the Preschool to the community and also submitted a Petition with over 300 names in support of the Preschool (collected so far). Existing Preschool students also sang the song "Pauahi" to the Board and the Kamehameha Schools' representatives that were present including the Vice-President of Strategic Planning and Implementation, Mr. Chris Pating (chpating@ksbe.edu). Mr. Pating has taken responsibility for the decision to permanently close the Preschool. The lyrics of the song the children sang in Hawaiian include "Pauahi, Pauahi, You are dearly loved, by the children, at Kamehameha."

Lastly, it was announced that the Jodo Mission has already completed the most recent repairs that Kamehameha Schools had indicated were necessary at the Preschool and also that the Mission is hiring a firm to conduct a comprehensive Structural Engineering Study of the site to determine what repairs, if any, may be needed to upgrade the safety of the buildings. The Mission also committed to cover all of these expenses themselves.

Next steps for the families and community include: 1. obtaining a meeting with the Trustees to ask them to keep the Preschool open and 2. keeping the community discussions moving forward with the Kamehameha Schools' Community-Based Early Childhood Education program to determine what can be done for students and families in the Haleiwa "catchment area" for the 2014-2015 school year so that the program can continue in this region into the future.

The community deeply appreciates the valuable work of the staff and educators supporting the Kamehameha Schools' Community-Based Early Childhood Education (CBECE) program. This is particularly so at the Haleiwa Preschool site that has been in operation for 14 years. The Haleiwa Preschool site:

- seats approximately 36 students each year
- serves children and families from Haleiwa, Waialua, Mokuleia, Pupukeya, "Sunset Beach," Wahiawa, and Mililani
- rejects and/or waitlists a significant number of student applicants each year

BREAKFAST

7 AM to 10:45 AM DAILY



Haleiwa Town Center - 637-5095

\$2.00 Off with this Coupon

Some Restrictions Apply. See Restaurant for Details.
When Ordering Regular Priced Items. Good Anytime. One Coupon Per Person.
Can Not Be Combined with Other Discounts. Expires 06/30/2014.

- had the 3-year old students and "late-born" 4-year old students sign letters of intent to return for the 2014-2015 school year in February 2014
- accepted applications for new students for the 2014-2015 school year in November of 2013

If there are credible reasons the existing site at the Jodo Mission is conclusively determined to be no longer feasible for the Preschool, the parents and other supporters believe that a temporary alternative site in or near Haleiwa for the 2014-2015 school year is very feasible. This is particularly so because of a wide variety of factors including broad community support and the large Kamehameha land holdings and development activities in this region. A temporary site can be utilized until a longer-term location can be located and developed in conjunction with the broad-range of other on-going Kamehameha Schools activities in and around Haleiwa.

Community members stress that access to early education is widely recognized as a key element to a young child's future and note that Hawaii is 1 of only 11 states currently without a publicly funded preschool system. Perhaps as a result, roughly half of Hawaii's children start kindergarten without a preschool education. In a rural area such as Haleiwa losing an existing preschool would have dramatic implications and the threat of losing the Kamehameha Schools Preschool is mobilizing the community in support of early childhood education.

The Haleiwa Family Dental Center, Ltd.



presents

"Comfort Dentistry"

including—

- Relaxation Glasses
- Television Glasses
- Caring Staff
- Special Medication to help you relax
- Laser Cavity Detection
- New Patients Welcome!

Your teeth are much too important to neglect.

Call: 637-9652
for your reservation

We're conveniently located behind First Hawaiian Bank
in the heart of Haleiwa.

You are invited to
EASTER SONRISE SERVICE
 HALEIWA ALI'I BEACH PARK

Good Friday Service
 4/18 - 7:00pm

"Worship HIM"
 4/19 - 7:00pm

Easter SONrise
 4/20 - 6:30am



HOSTED BY NORTH SHORE CHRISTIAN FELLOWSHIP

If the **NOISE** and **CONCUSSIONS** from military artillery or drones have been a problem, please call these offices. They are accepting information from the community.

After you call, please log your concern with the Noise Concern Line at 656-3487.

Senator Brian Schatz • 523-2061 • www.schatz.senator.gov/contact

Senator Mazie Hirono • 522-8970 • www.hirono.senate.gov/contact

Senator Donovan Dela Cruz • 586-6090 • www.sendelacruz@capitol.hawaii.gov

Congresswoman Hanabusa • 541-2570 • hanabusa.house.gov/contact-me/email-me

Representative Marcus Oshiro • 586-6700 • repmoshiro@capitol.hawaii.gov

Representative Richard Fale • 586-6380 • repfale@capitol.hawaii.gov

Representative Lauren Matsumoto • 586-9490 • repcheape@capitol.hawaii.gov

NEW HOPE CENTRAL OAHU

HOPE IS ALIVE

APRIL 13, 2014 PALM SUNDAY SERVICE 9AM @ HALEIWA ELEMENTARY SCHOOL

APRIL 13, 2014 WORSHIP CONCERT "HOPE IS ALIVE" 7PM @ MILILANI TECH PARK,
100 KAHELU AVE. STE. 220

APRIL 16, 2014 EXPERIENCE A TRADITIONAL PASSOVER CELEBRATION 6PM
@ HALEIWA ELEMENTARY SCHOOL.

APRIL 18, 2014 GOOD FRIDAY SERVICE 6PM @ HONOLULU CONVENTION CENTER

APRIL 19, 2014 EASTER VIGIL 6PM @ HALEIWA ELEMENTARY SCHOOL

APRIL 20, 2014 "HOPE IS ALIVE" EASTER CELEBRATION 9AM @ HALEIWA ELEMENTARY SCHOOL.



**The US Air Force
Jazz Ensemble Group
Papana**

will play for us.

**Sunday, April 6, 2014
4:00 p.m. - 5:30 p.m.**

at the
**Waialua Bandstand
in the Park**

Come enjoy the music.
www.waialuabandstand.com



WAIMEA VALLEY
WHERE HAWAII COMES ALIVE



3rd Sunday Every Month
LĀ 'OHANA FAMILY DAYS

**50% Off General Admission
for our Kama'aina & Military!**
Plus cultural activities, artisans,
Hawaiian games, and more



Join Us in Welcoming
**HAWAIIAN HIKING COMPANY &
NORTH SHORE ECOTOURS**

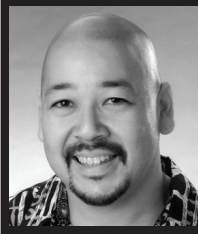
Explore the Valley like never
before! Visit waimeavalley.net
for dates and availability



Every Thursday, 3 - 7 PM
HALE'IWA FARMERS' MARKET

The North Shore's largest and
most diverse farmers' market
featuring locally-made products,
food, and music

On the North Shore across from Waimea Bay
Open 9 AM - 5 PM Daily • Call: (808) 638-7766
WAIMEAVALLEY.NET



Council Chair
Ernie Martin
Serving You in District 2

Bill 17 & Shoreline Setbacks

In a recent edition of the Star Advertiser, the editorial headline shouted "Don't Ease Rules on Retaining Walls". It was a critical commentary on Bill 17, a measure I introduced relating to shoreline setbacks. Contrary to the false impression created by the editorial and a similarly misinformed article in Civil Beat, Bill 17 would not allow sea walls or groins anywhere near any shoreline. It certainly would not permit such structures on sandy beaches such as those on the north shore of Oahu. Instead, Bill 17 would allow property owners of shoreline residential lots to build retaining walls, still through a permitting process, designed to limit erosion of "terrigenous" soil, consisting mostly of mud and silt, into the ocean. These lots are primarily found along Kaneohe Bay and have been responsible for vast amounts of sedimentation that has accumulated in the Bay over the years. Once clean and clear, Kaneohe Bay is a testament to the destructive force of sedimentation and unchecked run off into the ocean.

Because of the relatively limited shoreline available for residential development in Hawaii, oceanfront property will always be in high demand. Likewise there should be a corresponding insistence on shoreline protection measures. But strict protection of coastal zone areas on Oahu has not always been a high priority and some areas like Kaneohe Bay may never recover. Some shorelines that have already been "hardened" by protective structures that tend to cause further erosion problems for adjacent property owners. In a report prepared for the Department of Land and Natural Resources in 1993, shoreline alterations, including seawalls, groins and other structures characterized 88% of the South Kaneohe Bay shoreline. It is likely that a great many of those structures were built illegally, but it is unreasonable to expect that they can be easily or completely removed. Rather than admit to the severity of the problem, the Department of Planning and Permitting contends that the current law has been working well since 1970. If you gauge success by the slim number of variances issued since then, and ignore the proliferation of illegal structures due in part to the nearly impossible permitting process, I guess you would be satisfied. In testimony opposing Bill 17, DPP claimed that it is in conflict with state law. But state law prohibits construction of private erosion-protection structures seaward of the shoreline "except when they result in improved aesthetic and engineering solutions to erosion at the sites and do not interfere with existing recreational and waterline activities."

While DPP is to be commended for their vigilance, Department rules on shoreline setbacks has been a "one size fits all" approach to shoreline management for a long time. Retaining walls are not even considered for minor shoreline structure permits under the current regulations, in spite of the fact that such retaining walls could be a tool to control soil erosion by way of terraced landscaping. Rather than take a serious look at the suggestion that retaining walls could have a positive effect on the environment if designed in accordance with standardized specifications, DPP has been directing property owners to apply for extremely costly and time consuming variances instead. I heard from property owners who have been trying for decades to obtain a variance that would allow them to stabilize their shoreline and prevent the steady loss of ground, some of them at the mercy of a neighboring illegal seawall. Rather than find relief, they have been tied up in red tape and even in court, in an attempt to meet the astringent conditions imposed by the Department. It is a complicated legal process out of reach for many land owners, especially families of modest means on the windward side who have experienced years of continuous erosion of their property but lack the resources to pursue a variance. Bill 17 seeks to make the rules more responsive to people while it also helps to protect the marine environment. It is time to get real about the true purpose of the law and exactly what is was designed to serve and protect.



**Experience some of
 Waialua's favorite
 treats at PKB!**

**ALL NEW
 Cinnamon
 Finger Puffs**



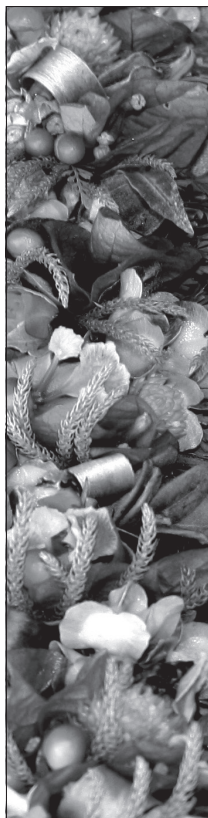
Cinnamon Finger Puffs are available for walk-in purchase on Tuesdays, Wednesdays, and Thursdays.

Pre-orders can be placed Friday through Monday with a minimum 3-dozen order. Pre-orders must be placed a day in advance.



(808) 637-9795

www.pkbsweets.com



HAWAIIAN ELECTRIC COMPANY PRESENTS

THE 7TH ANNUAL GROW HAWAIIAN FESTIVAL

CELEBRATE HAWAIIAN CULTURE – NATIVE PLANTS – SUSTAINABILITY

Saturday, April 5, 2014

9:00 a.m. to 3:00 p.m.

Bishop Museum • 1525 Bernice Street, Honolulu
Free admission for kamaʻāina and military with valid ID

Special presentation: Beekeeping in Hawai'i

Lei making – woodworking – kapa printing – weaving
Native plant sale – farmers' market – local products
Learn about clean energy – conservation – electrical safety
Enjoy games – keiki activities – Hawaiian-style food

Music by Nā Hōkū Hanohano award winners Nā Hoa and Holunape

For event details call 543-7511 or visit www.hawaiianelectric.com/growthawaiian



Hawaiian
Electric



BISHOP MUSEUM

NORTH SHORE AYSO REGISTRATION DATES FOR FALL 2014

Sunset Beach Elementary
(Cafeteria)

Wednesday, April 16, 2014 - 6pm - 8pm
Saturday, April 19, 2014 - 8am - 12pm

Waialua District Park
(Recreation Center)

Wednesday, April 23, 2014 - 6pm - 8pm

Waialua Community Association
(Atherton Room)

Saturday, April 26, 2014 - 8am - 12pm



JESUS IS ALIVE



**EASTER
SERVICES**
APRIL 20, 2014
7:30 AM

**WAIALUA
COMMUNITY
ASSOCIATION** (Across
the Haleiwa
Post Office)

Sponsored by Haleiwa
Evangelical Mission
International
Guest
Speaker:
**RAFAEL
ESCALERA** 808-637-4567

Business Administrator for
The Salvation Army Adult Rehab

Please stay after services for light refreshments!



State Representative
Richard Lee Fale
Serving You in District 47

Agriculture has a long history in the North Shore, where the connection between land, water and people helps define the character and culture of the community. It is part of the reason our family chose to live in this part of Oahu, because we had grown up with access to farmland for personal and community use and wanted to continue to practice that way of life.

Agriculture continues to be a very important part of North Shore Oahu, but as support decreases and risk increases, this way of life could shrink into irrelevance. I believe there are real opportunities for policy makers to create meaningful rules and reforms to bolster and revive this declining segment of our economy.

My concern is that the policy makers talk a lot about the strategic and critical importance of maintaining and growing a healthy agriculture sector but we do not follow through with the meaningful legislation and economic policy reforms to translate that talk into action.

The challenges that threaten farmers and the agriculture industry are primarily economic in nature. They include the cost of land, the cost of energy and the necessary resources and infrastructure to help make farmers and agriculture thrive and succeed. Policy makers should create a regulatory and economic environment that will allow our farmers and the agriculture industry to grow and strengthen.

I supported three bills that passed through the State House, all of which will help introduce and promote agriculture and farming in the community and help improve the economic viability of these industries for our farmers. These bills are:

1. House Bill 2008 - Makes an appropriation for the Future Farmers of America Program, which is critical to the raising of the next generation of farmers. This also supports the Legislature's understanding of the strategic importance that agriculture and farming plays in the state of Hawaii.

2. House Bill 1988 - Creates a Farm to School Program coordinator position in the Department of Agriculture to increase the procurement of locally grown foods for school meal and snack programs. The coordinator will coordinate the efforts of the Department of Health, Department of Education and the Department of Agriculture to make sure that the department efforts are in alignment.

3. House Bill 1662 - Establishes the month of October as Farm to School Month in Hawaii. October is currently National Farm to School Month. This bill would help to raise awareness through field trips, chef and food specialist visits, healthy local snacks, family events, nutrition and gardening lessons, etc.

While these measures are not the large, meaning-

ful changes we will need to help boost the agriculture industry in Hawaii, they are critical steps in our effort to get there. By educating the community, especially our youth, about the fun and importance of growing our own food, we can better teach the community how to appreciate and understand the land they are a part of and ensure we are all working together to be stewards of this beautiful place we call home.



Rep. Fale (center), his father, Tevita Fale (right), and fellow farmer Sateki Mahe (left) on their farm in Hauula.



PKB SUPER SAVER

Combo Special

Perfect snacks for tax preparation season!

Purchase ANY of our Danish Pastries and get a Cinnamon Roll for **50% OFF**

Just mention our tax "combo special"

Offer cannot be combined with other promotions or discounts. Offer expires April 15, 2014.

100% LOCAL!

Handmade Daily!

Cinnamon Fever!!



www.pkbsweets.com



**Representative
Lauren
Matsumoto**
Serving You in District 45

Aloha!

Our local media has been providing coverage of small invasive species in Hawaii. Although small in size, the very existence of these species in our Island State presents huge implications for our residents and our economy. We've recently been experiencing an influx of the now well-known "Little Fire Ant" (LFA), and the newly discovered "Coconut Rhinoceros Beetle" (CRB). I want you to be aware of these two invasive species because they have become a nuisance to our local residents and local farmers because of the physical and economic damage resulting from their presence.

LFA are very tiny ants, measuring 1/16th of an inch long, about as long as a penny is thick. They are pale orange and move slowly. Their stings are painful and produce large, red welts, most often on the neck, arms, and torso. Initially the bites from these tiny ants hurt and burn, then develop into welts that may cause intense itching that lasts for two weeks or more. This species of ant is found both on the ground and in vegetation of all sizes, including trees, so they are likely to fall on a person from above. They build their nests under leaf litter, rocks, or pieces of bark, not in mounds. They can also invade homes, where populations can range from millions to billions, and they sting people and pets.

There is a simple test for detecting LFA. Step 1: Smear a thin coat of peanut butter on one end of a wooden chopstick or Popsicle stick. (A thick coat doesn't work as well.) Step 2: Place the sticks around your property in plants and at the base of trees, preferably in the shade. Check the sticks after about an hour. The sticks should be no more than 10-12 yards apart. Step 3: Carefully pick up sticks with ants on them so the ants don't fall off. Place them in a zip top bag and seal the bag. Look at the ants to see if A) they are red-orange, B) they are no longer than 1/16 inch and C) they are slow moving and fall easily off the stick when you tap it. Step 4: If you answered 'yes' to the questions in Step 3, you may have LFA. Write your name, the address where the ants were found, and a phone number on the outside of the plastic bag and put it in the freezer to kill the ants. **DO NOT TRANSPORT LIVE ANTS!** Drop off the bag after the ants are dead to the Oahu HDOA office at 1428 S King Street, Honolulu, or call them (808) 973-9538.

There are many things you can do to prevent Little Fire Ants from infesting your home because they need people to move them from place to place. Items like

potted plants, landscaping material, produce, and mulch can harbor LFA. Simply wiping your arms and legs before entering your home can keep the LFA from catching a free ride into your home. You can easily test for LFA by placing peanut butter on a chopstick or other small, flat surface and leave in an area prone to invasions. Check the stick later for ants.

Another new invasive pest that has been detected on Oahu, one that damages coconut trees and other palm plants, is the Coconut Rhinoceros Beetle (CRB). CRB is mainly a pest of coconut and oil palms, but may also attack other palm species. Adult CRB are dark brown in color and measure 1 ¼ to 2 ½ inches long. CRB larvae are white in color with a brown head. They damage palms by boring into the center of the crown where they injure young, growing tissue and feed on the sap. As they bore into the crown, they cut through developing leaves, causing damage to the fronds. V-shaped cuts in the fronds and holes through the mid-rib are visible as leaves mature and unfold, a telltale sign that CRB has been feasting on your palms.

Natural enemies of CRB include pigs, rats, ants, and some beetles, which attack CRB eggs, larvae, pupae and adult beetles. They may also be killed by two diseases, a specific fungus and a specific virus. Unfortunately, neither of these diseases is known to occur in Hawaii.

Report any unusual insect, ant, or plant you see to your local Hawaii Department of Agriculture (HDOA) office, or the Invasive Species Committee located on each Island. For Ants, contact the Hawaii Ant Lab (808-315-5656) or the Hawaii Pest Hotline 808-643-PEST (808-643-7378). Suspected CRB on coconut and palm plants on any island should be reported to the Hawaii Pest Hotline 808-643-PEST (808-643-7378). This is also a toll-free number for neighbor islands.

By being vigilant and working together, we can minimize exposure and damage from these new invasive species. As always, please contact me with your questions, ideas, or concerns at my office at (808) 586-9490 or RepMatsumoto@Capitol.Hawaii.gov. Visit RepMatsumoto.com to sign up to receive information in issues that are important to you.

ROBERT M.

PAGAN CONSTRUCTION COMPANY



(808) - 499 - 8617

New construction / Additions / Remodels - Lic # 32866 Bonded / Insured
www.robertpaganbuilders.com

A WINNING COMBINATION

By partnering with experts in the farming community, Kamehameha Schools is proud to join the movement working toward a sustainable Hawai'i.



Above: Ke Ali'i Pauahi Foundation Executive Director Keawe Liu (left), and Kamehameha Schools' West Hawai'i Director of Strategic Initiatives Ka'eo Duarte (right) pose with Holoholo entrepreneurs Jill Nordy, Jamie Sexton and Elisabeth Beagle.

Congratulations to North Shore's own **Holoholo General Store** on winning the first-ever Mahi'ai Match-Up Agricultural Business Plan Contest presented by Ke Ali'i Pauahi Foundation and Kamehameha Schools. We look forward to growing Hawai'i's future together.



KE ALI'I PAUAHI FOUNDATION KAMEHAMEHA SCHOOLS®

Kamehameha Schools' endowment exists to support our educational mission which is to fulfill Pauahi's desire to create educational opportunities in perpetuity to improve the capability and well-being of people of Hawaiian ancestry.

Find out more about our agriculture initiatives and sign up for updates at www.ksbe.edu/land.

Congratulation to North Shore's Holoholo General Store

Did you know that nearly 85% of the food our state consumes is imported from places more than 1,000 miles away? Hawaii's overdependence on imported foods makes us susceptible to many economic, environmental, social, and health risks. There is a growing interest by companies to move toward a more sustainable Hawai'i.

Kamehameha Schools' and Ke Ali'i Pauahi Foundation created for the first time, the Mahi'ai Match-Up - a statewide agricultural business plan contest for farmers and entrepreneurs looking to establish a sustainable agricultural business in Hawai'i. Winners received an agricultural lease, up to five years of waived rent from Kamehameha Schools and a cash prize from the Ke Ali'i Pauahi Foundation to help make their plans a reality.

Winners of this year's Mahi'ai Match-Up consist of Kaunamano Farms, Mapulehu Farms, and the first place winners the Holoholo General Store (HGS). HGS is a North Shore based community supported agriculture business that produces and distributes locally grown fruits and vegetables. HGS's mission is to be Hawaii's preferred source of premium locally-grown food and specialty items - strengthening Hawaii's agriculture through non-conventional distribution,

education, and promotion of "eat local".

Since winning, HGS will expand their operations to 6.3 acres of Kamehameha Schools' land in Pa`ala`a. This land expansion will allow them to nearly double their citrus and vegetable production. HGS also received \$25,000 of start-up capital for various improvements, including a photovoltaic powered cool storage facility.

"What all three of these winners brought was the passion to push the boundaries. In this setting, they've been given the opportunities to test the waters and push a little bit further than they might not have been able to, otherwise," Ed Kenney the owner of Town Restaurant said. The Mahi'ai Match-up brought farmers and agricultural entrepreneurs together to share innovative agricultural ideas. In the effort to move Hawai'i toward a more sustainable state, Kamehameha Schools and Ke Ali'i Pauahi Foundation plans to hold a second Mahi'ai Match-Up contest later this year. For more information about Mahi'ai Match-Up and to learn how Kamehameha Schools partners with local farmers to build a sustainable Hawai'i visit: www.ksbe.edu/land.



State Senator
Clayton Hee
Serving You in District 23

Aloha kakou,

I am pleased to serve as your State Senator for District 23, the largest senate district on O'ahu, including communities from Ko'olaupua to Waialua and Central O'ahu (Kane'ohe, Ka'a'awa, Hau'ula, La'ie, Kahuku, Waialua, Hale'iwa, Wahiawa, Schofield Barracks, Kunia).

I was born and raised on O'ahu where I attended Kamehameha Schools and the University of Hawai'i. I went on to teach Hawaiian language and Hawaiian studies at various high schools and colleges on the islands of Molokai and Oahu. I also previously chaired the Office of Hawaiian Affairs.

Before moving to Kane'ohe in 1984, I served in the State House from 1982 to 1984. Since 1984, I have served in the State Senate where I am currently Chair of the Judiciary and Labor Committee and Vice Chair of the Hawaiian Affairs Committee.

I welcome this opportunity to start providing you regular updates in the North Shore News on recent developments in the State Legislature affecting our community.

Turtle Bay

For many years, I have supported the state's efforts to conserve the Turtle Bay Resort lands, a five-mile stretch of wild coastline and a treasured refuge for residents and wildlife seeking peace and quiet in the country.

I have worked closely with diverse community members, two governors, state legislators, state agency leaders, city council members, the resort owners, and representatives of the Trust for Public Land and the North Shore Community Land Trust on conservation options.

In 2013, I authored Senate Bill 894 and ensured \$100,000 in critical seed funding for the technical appraisal and negotiations between Governor Abercrombie and Turtle Bay owner/representative Replay Resorts.

I also sponsored two resolutions (SCR164 and SR 121) that created the Turtle Bay Working Group to explore conservation options for the undeveloped lands. That working group reported in December 2013 that negotiations were bearing fruit.

These complex negotiations have focused on Turtle Bay's voluntary offer to sell development rights to the State in exchange for the public's perpetual conservation easement over 610 acres of resort-zone land (69 acres at Kawela Bay and 541 acres on the Kahuku side).

This conservation easement would eliminate the proposed sprawl of "resort residential" housing in these areas, preserve the shoreline for wildlife and recreation, maintain public access to the beach, and protect 100-acre Punaho'olapa Marsh.

A perpetual "conservation easement" will be part of the resort's deed and "run with the land," allowing the public to forever enjoy and access these lands while the resort will have the stewardship responsibility as the owner.

The community should be aware, however, that the current negotiations do not involve the "core" 130 acres of the property around the existing hotel, which the resort owners are not yet willing to discuss. The fate of Turtle Bay's announced plans to build two more beachfront hotels in this "core" area, despite continued community opposition, is still to be determined in the future.

I am optimistic that those challenging negotiations will soon come to fruition and lead to the permanent protection of this spectacular coastline. To provide a legal safety net for the negotiations, I have revived Senate Bill 894, now pending in the House Finance Committee, which will put powerful negotiation tools on the table and keep the pressure on all parties as the session comes to an end in the coming weeks.

More good news: negotiations started back in 2010 by the land trusts and the resort using a similar conservation partnership approach are also leading to an agreement to preserve the 469 acres that Turtle Bay owns on the mauka side of Kamehameha Highway in a permanent agricultural land trust.

The momentum for these historic conservation transactions that will protect over 1000 acres of coastal land for the public and permanent agriculture is very positive, thanks in large part to strong community support that should soon help us end decades of controversy.

Laniakea/Chun's Reef/Kamehameha Highway Realignment

To address the community frustration over the unacceptably slow progress toward a solution to the traffic, safety, erosion, turtle, and beach management issues at Laniakea, I introduced SB3035 this legislative session.

As originally proposed, the bill would have the State Department of Land and Natural Resources (DLNR) partner with the State Department of Transportation (DOT) to prepare a comprehensive plan for realigning the highway mauka to resolve the traffic and resource conflict issues and create a passive "wayside" park. Landowner Kamehameha Schools is on board to find a positive realignment solution.

With broad community support, SB3035 passed the Senate and is now pending before the House Finance Committee. I have also requested a Capital

Continued on page 11

Continued from page 10

Improvement Project (CIP) appropriation for an expedited planning and design of the realignment project that would wrap in the six-plus acres of stalled city support-park parcels at Laniakea and Kawaialoa, purchased over ten years ago.

I am also pleased to inform the community that, thanks to Governor Abercrombie, we are finally seeing DOT give a higher priority to the Laniakea Project. Watch for further announcements and come to the DOT's April 16 Laniakea Realignment Task Force meeting to hear an update on the current environmental review and cultural surveys of the area and realignment alternatives.

After over ten years of delays, traffic congestion, pedestrian chaos, and obfuscation, we are finally seeing some action on Laniakea. I will keep pressing hard on behalf of the community for a comprehensive solution that makes this stretch of Kamehameha Highway a model of climate resiliency and safety.

North Shore Beach Management Plan

Winter beach erosion along the Rocky Point and Ke Nui Road shoreline painfully brought to everyone's attention the very real threats imposed by storms and climate change to our coastal homes and people from the eroding shorelines.

In response to the shoreline crisis, beach park erosion issues, and the chronic undermining of Kamehameha Highway in other areas, I introduced SB3036, which calls for a North Shore Beach Management Plan.

The plan would be led by the University of Hawaii Sea Grant Program and create community driven management plans to protect our shorelines and beach dunes through state-city-resident partnerships.

SB3036 passed the Senate and all House committees and, like SB3035, is pending in the House Finance Committee, with a requested appropriation of \$400,000 for a two-year study.

Community Conversations – Stay up to date!

To keep the community up to date and get your input, I have held two Community Conversations (on February 19 and March 22, 2014) co-sponsored by the Sunset Beach Community Association and the North Shore Chamber of Commerce. A third Community Conversation is planned for May or June.

To stay up to date, go to the Sea Grant project page:

<http://seagrants.soest.hawaii.edu/hawaii-north-shore-beach-management>

And stay involved via Facebook: <https://www.facebook.com/northshoreconversations?ref=hl>

As always, feel free to contact my Senate office if I can be of any assistance. 808-586-7330; senhee@capitol.hawaii.gov

Olakino Maika'i

(Good Health)

by Naty Camit Hopewell

Dental Care for the Young Keiki

Hawaii's water does not have natural fluoridation. Consequently, many of Hawaii's keiki suffer from cavities. Ko'olauloa Health Center wanted to address this healthcare need and hired a pediatric dentist, Dr. Sena Hiradate. The following are her recommendations for your child's dental care.

The American Academy of Pediatric Dentistry recommends a dental visit within 6 months of eruption of the first tooth or no later than 12 months of age. The important thing is to establish a "dental home." Begin brushing your child's teeth with a soft brush and fluoridated toothpaste as soon as a tooth appears. Wean your child off the bottle and breast by age 1. The reason is two-fold: 1) the child usually falls asleep after feeding and 2) saliva production is decreased with sleep allowing continued contact of the teeth with sugar from the milk. This increases the risk of developing tooth decay.

Introducing the sippy cup as soon as your child can hold the cup facilitates weaning off the bottle and breast! Begin with water in the cup. Avoid juice, which has too much sugar. Some experts feel that putting milk in the cup is just as bad as drinking milk from the bottle because some children continually suck on their sippy cup. You can avoid this by using a straw or not allowing sipping over a period of time.

Another protection for the teeth is supplementing with fluoride beginning at 6 months of age. To avoid overdosing, the amount of fluoride is increased according to age. What about flossing? Floss your child's teeth if there is no space between the teeth. If there is space between the teeth, brushing will easily remove food particles.

Finally, call your dentist if your child's teeth have been traumatized.

Get the Best Return for Your Money

North Shore Readers 10% OFF Tax Preparation

For new customers. Valid at participating locations. Cannot be combined with other offers or used toward past services. One coupon per customer and per month. Other restrictions may apply. Visit libertytax.com for details.

Friendly, Accurate Tax Preparation with a Money Back Guarantee.

866-871-1040 LibertyTax.com

66-560 Kam Hwy Next to Killer Tacos Haleiwa HI 96712 637-2222	203 S Kam Hwy Across from Goodies Market Wahiawa HI 96786 622-0222	1680 Wilikina Dr By Schofield Barracks Wahiawa HI 96786 622-2677
---	---	---



Country Talk Story with Choon James

Mayor Kirk Caldwell's Fiscal Logic

At Mayor Kirk Caldwell's 2nd State of the City address on February 26, 2014 at the McCoy Pavilion in Honolulu, he stated that he chose the venue to highlight his emphasis on our parks.

Next year, we'll like to invite the Mayor to hold his State of the City address at the Kahuku Golf Course!

The only problem is the Kahuku Golf Course may not be available. There is a Chinese investor negotiating to buy it and who knows what will become its fate.

We're very disappointed that the Mayor shows no interest in saving this 122 acres of iconic beachfront golf-course that was started in the 1930s with the tools and hands of Kahuku Plantation workers.

Mayor Caldwell also stated that "the number one complaint the city gets is homelessness."

I guess the Mayor has forgotten the Kahuku Plantation Village so far about 10 families have been evicted. Approximately 11 more families are in the pipeline.

Mayor Caldwell refused to collaborate with the city council which unanimously adopted Resolutions with allocated funds to address these problems. But the Mayor is using the excuse that international investor Continental Pacific, LLC is a private property owner.

We find it ironic that the Mayor is using the city's power and resources to condemn an extra commercial lot of 20,300 sq. ft. in Hauula by eminent domain. He can build a typical fire station like that of Kaneohe, Wahiawa, Ka'a'awa, or Makaloa by Kapiolani Blvd TODAY on the adjacent LOT 64 the city purchased in April 2010.

But Caldwell is fighting in court for our adjacent LOT 65 to build a "Kapolei City" style fire station in Hauula for at least \$13 Million.

The City Spin Machine and its operatives insist that I had a contractual agreement to sell to them and that I was greedy for more money. That's equivocally disingenuous. There was no such contract. It's a red herring to divert from the real issues.

Even if I DONATED the land to them, the city must still obey its own rules, procedures, and laws. Hauula residents living next to the proposed relocated site were never consulted and continue to be ignored. Google "Eminent Domain Abuse - Hawaii."

There is no other intelligent rationale to build a SUPER-SIZED fire station in rural Hauula when their environment assessment report clearly stated that there would be no personnel or area service expansion.

Rural Hauula is also NOT Kapolei City.

The city used the excuse that the new station has to be out of the flood plain. But they did not disclose to the public that their first selection was a 1.65 acre BEACHFRONT lot across Papa Ole's! Surely a beachfront is in a flood plain.

The Mayor wants to charge new monthly fees for garbage! He has increased property taxes, camping fees, car registration fees and is looking for more ways to squeeze more fees.

It makes no sense to throw \$13 Million to relocate a fire station less than a mile away when there are much bigger problems to address. This was never about "public safety."

It makes no sense to shut down the last two commercial-zoned parcels in rural Hauula when the Mayor says he wants to promote business opportunities.

Residents think the Mayor owes a plum building contract to his donors.

Choon James has been a real estate broker for over 20 years. She hosts "Country Talk Story" on Ololelo Television every Saturday at 5:00 pm on Channel 55. Choon can be reached at 808 293 9111 or ChoonJames-Hawaii@gmail.com

**"History of Waiialua Plantation"
April 5, Saturday, 7 p.m.,
Waiialua United Church of Christ**

NAUGHTY BITS

Café & Shrimp Truck
Oahu's Premier Wedding Caterers
Serving Oahu's North Shore
www.Naughtybitsdiamondhead.com

Spring Special:
Order \$750.00 of catering items or service
and receive coupon for \$100.00
of catering items or
services redeemable instantly.

Best Shrimp Truck Around!
Delicious, Gorgeous and Affordable Catering
Event Planning
Custom Wedding Cakes

(808) 221 - 6117

Come visit us at:
54-124 Kamehameha Hwy, Hauula
@ Rainbow Castle

Letters to the Editor

Laniakea Beach Realignment and Wayside Park

Dear Editor:

Laniakea Beach has always been known for surfing. It is not an ideal spot to go swimming unless you go behind residential areas. The home owners must feel the invasion.

More and more some people are looking for a need to turn this into a regular tourist attraction to see the turtles.

Who will be maintaining this wayside park that is proposed?

Realignment of Kamehameha Highway near Laniakea Beach is surely needed but using funds that should be used where other parks or other areas that need it most should be considered first before even considering building a new parking lot with comfort station. Laniakea has done without all these years. Haleiwa Beach Park and Waimea Bay already has restrooms.

Realign the highway, NO PARKING LOT IS NEEDED! Surfers can pull up on the makai side as they do along the North Shore.

Where does some of these people talking to the media get their numbers by saying 90% of the community wants this project. I myself along with other people in the community of the North Shore do not agree!

Why are they asking to build a parking lot to accommodate more cars in the area? Wouldn't you think this will mean more traffic because the cars will need to go in and out of the parking lot? Do we need to attract more tourist to this area?

It's been great so far with the barriers. We're not stuck in the traffic and we don't have to worry so much about getting to wherever we need to get to on time. People should really think seriously about this project. If you're against this project you should speak up or be stuck in traffic again!

Concerned

Note of Confidence

Dear Editor:

I am in the construction field and work on the North Shore for many years. I've often worked with "Shore Electric" and specifically with Jerry Jones and his crew. I have never had to engage in his services until now. Wow! He sent someone right over who was really knowledgeable and professional. Jerry even stopped by to discuss the findings due to the unique nature of the problem. He and his worker left—problem solved! I am SO impressed. Thank you.

RELAY FOR LIFE 2014

Help the Ko'olauloa and North Shore community
fight back against cancer and join us for our annual
RELAY FOR LIFE - KO'OLAULOA!



FRIDAY, APRIL 25 - SATURDAY, APRIL 26

6:00 P.M. TO 6:00 A.M.

KAHUKU DISTRICT PARK

For more info, please email
rflkoolauloa@gmail.com
or visit www.relayforlife.org/koolauloa.

We're still looking for sponsors, teams and participants so please contact us today!

Bring your business or family down for an evening full of food, activities, entertainment and more. Join us for an evening to celebrate, remember and fight back against cancer.



HAWAII POLO CLUB

SEASON 2014

“POLO IN PARADISE”

OPENING DAY

SUNDAY, APRIL 6

DILLINGHAM FIELD

Swim, Picnic	MOKULEIA	Tailgate, Live Music
Gourmet Food		Cocktails By The Sea
	Skydiving by	Dancing Til Dusk
	Skydive Hawaii	

Gates Open at 12 noon - Polo at 2pm

\$10 General, \$8 Military w/ I.D., \$25 Clubhouse Reserved

For Information Call 738-POLO

Brought To You By Equus Hotel

Waikiki’s Premiere Boutique Destination

Join Hawaii Polo Social Club... Call Kirsten 469-5766

Equus Hotel Proud Sponsor of Hawaii Polo Club & Equus Polo Team

Refer to this ad to receive special kamaaina 20% Polo discount
Call 949-0061 for reservations.





Surf Tech



BANZAI NORTH SHORE WIRELESS

Bethany Hamilton landed radical turns to take the win at the Surf n Sea Pipeline Womens Pro. It was another waiting game for the Surf n Sea Pipeline Womens Pro. As time wound down only one day remained in the waiting period and a nice spring swell was the call of the day for the ASP one star event. Surf was 3-5 foot with rights and lefts coming into the break, not the best Pipeline situation but great waves none the less. The ladies pulled off some hard snaps and a few cover ups in the disorganized surf and were impressive. The first heat was the indicator, Bethany Hamilton was on fire pulling some giant turns in both directions and snagging a cover up and the Banzai Sushi award for the best tube ride right off the bat. Moana Jones, North Shore, was kicking her tail right behind the Kauai native pulling off great turns to take the second place award. Anastasia Ashley who has the best record in the competition so far made it through her first heat but was upset in the semi, out scored by the god send Hamilton and Jones who showed true grit all the way to the final. Returning champ Dax McGill made the final but just could not find the waves to perform on and ended up in fourth place. Japan's surfer Sayuri Hashimoto took third place. The surprise stand out played it smart catching good scoring backdoor waves and wowing the crowd!

It was Hamilton though that took charge taking lefts and rights and throwing giant turns with conviction. Hamilton won the event hands down and one armed, armed with more determination than the rest. "It was fun, it wasn't exactly Pipe but better than most spots around the world that I surf," said Bethany after her win. "I usually lose so this was great. I wasn't even expecting it but I always keep my eyes out for barrels because you never know out here." It has been ten years since Hamilton has one an event but has gotten close several times. This time the 24 year old inspirational surfer was there every day, practicing, ready, and determined to do her best in one of the best waves in the world!

The North Shore Surf Shop Pro Junior was held in pretty epic conditions with 5-7 foot bombs gracing the competitors. North Shore bred Kona Oliveira scored the first 10 of the contest, pulling into a solid 6-foot Pipeline bomb and getting spit out in front of a roaring home crowd. It was both the Moniz sons that were hungry for victory. Seth had posted the only other perfect score of the contest in his Semi Final match up, but Isaiah wasn't fazed and looked unbeatable. The final was an epic brother vs. brother

showdown, but it was Seth who came out on top. Seth found a good Pipe wave left and scored solidly. In the end Griffin Colapinto, USA ended up in 3rd and Imaikalani Devault, HAW was 4th. The Junior competitions are much needed in Hawaii. The ASP has been concentrating on getting much needed points for our young surfers for a few years now including the Jr. Pro at the Duke's Oceanfest in Waikiki. Both the womens and mens junior events there have been confirmed in August and an additional Kewalos Womens Junior is a hopeful! Stay tuned!

It was certainly an experience for the Quiksilver body surfing event. The event was stacked with about 60 surfers and Pipe was raging as a new swell came in and the winds picked up. Exciting rides were in every heat but in the end it was bodyboarding champion Mike Stewart that took the win. Mark Cunningham was second, BK Holt 3rd and Todd Sells 4th. The top four were all from Hawaii. Congrats to the entire crew and all the Pipeline Competitors, job well done!

In other news World Champion Carissa Moore won Glamour Magazine's woman of the year award. She was given the award because she has raised the profile of Womens surfing. She was quoted as saying "Girls can do exactly what the guys are doing, we can do airs, we can do huge power carves, but with a little grace too." At the Surfer Poll awards Moore mentioned that there should be 10 top female awards as the men have and has been out spoken in a humble way, we all like that. Congratulations to Carissa for her outstanding accomplishments in and out of the water.

Got News? email me at banzaib@hawaii.rr.com
Aloha!

BANZAI PRODUCTIONS

Video - Media Need Web Video Ask About Our Special Rates

808-781-2535

living everyday better than yesterday...

Crossfit Waialua

Have you ever driven down Goodale Avenue in Waialua, on what is typically a quiet and desolate roadway, and all of a sudden you find yourself driving next to a group of people running alongside the road carrying Weighted Medicine Balls or Barbells across their shoulders?

Well, chances are you've encountered the members of Crossfit Waialua, Waialua's newest Crossfit Gym.... or "Box" as they like to call it.

The idea or concept of Crossfit may seem intimidating, scary even, BUT, once you make the decision to take the challenge, you're already a step ahead of the rest. When you commit to the ultimate lifestyle change, the experience is like no other. The workouts are always a painful surprise but for some reason crossfitters keep coming back for more. The unique family that is the Crossfit Community makes everything seem possible REGARDLESS of your strengths or weaknesses.

For those not familiar to the Crossfit experience, crossfit is a series of high intensity interval workouts. A mix of cardio, weight lifting and mobility, Crossfit is designed for all levels of physical ability.

Owner and Coach, Levi Daniels experience and knowledge in Health & Fitness, specifically in Crossfit Training provides a valuable leadership of progressive workouts for anyone wanting to live a healthier, stronger, and positive lifestyle. Coach Levis background in the Military Special Operations and as a Coach, training Marine Combatant Dive candidates, led him to continue his rigorous fitness sense in Crossfit and ultimately becoming a Crossfit Coach and owner of "the Box" in Waialua.

Members start off with a series of fundamentals classes. Three (3) times a week for two (2) weeks new members are introduced to a Movement Curriculum in a group format. This introduction focuses on specific Movement Techniques and progressively leads members to the intensity levels that are essential to Crossfit Waialua's workouts.

Crossfit Waialua emphasizes the importance of fundamentals as it provides necessary education on proper technique that promotes good form and more importantly reduces risk of injury.

As with ANY sport and ANY athlete, risks and danger exists, but with the Proper Education, Good Coaching and Consistent Training, the result will be Good Form and successful workouts.

Group Classes/Workouts are Monday thru Friday at 6 and 9am and 4,5 & 6pm and Saturdays at 9, 10 & 11am

Coach Levi also stresses the necessity of good Mobility. After every workout there are Mobility movements that help members recover specific muscle groups or zones. Mobility focuses on muscles and



stretching movements that are typically overlooked after such intense workouts. The Mobility phase helps muscles recover quicker and helps to improve movement.

The Crossfit Waialua Box, has been blessed with an incredibly family of members. They've also been fortunate enough to have a notable guest list. If you're familiar with Crossfit athletes, you'll know names like Lindsey Valezuela, Stacie Tovar, Michelle Kinney, Matt Chan, Dan Bailey (just to name a few) that are part of the the PROGENEX team and some of the best crossfit athletes in the world.

Some of the North Shore's own elite fitness and surfing communities are also members of the Box, Kai "Borg" Garcia, Leif Robinson and Dusty Payne, to name a few. During the winter months, it's not unusual for some of surfing's standouts to come to the Box to be stay in shape.

Name dropping aside, Crossfit Waialua has an extensive and committed group of members that create an exceptional Crossfit Ohana. When you walk in the door, it's like you belong, its open armed, no judgments, it's all about family, hard work and incredible support. REGARDLESS OF WHO YOU ARE AND WHAT YOUR ABILITIES MAY OR MAY NOT BE, if you come in and make that commitment, you're never alone.

On Saturday April 12, 2014, Crossfit Waialua will be hosting a Blessing/Grand Opening Event. You could call it a "Rebirth" of sorts due to the vast amount of work and improvements have been made to the "Box" and its property. As with any property, work is on-going and projects are endless and there is much more to be done, the Box is anxious to invite you to visit them and enjoy what they take great pride in ... Their box, their family, their Commitment to a positive and healthy lifestyle.

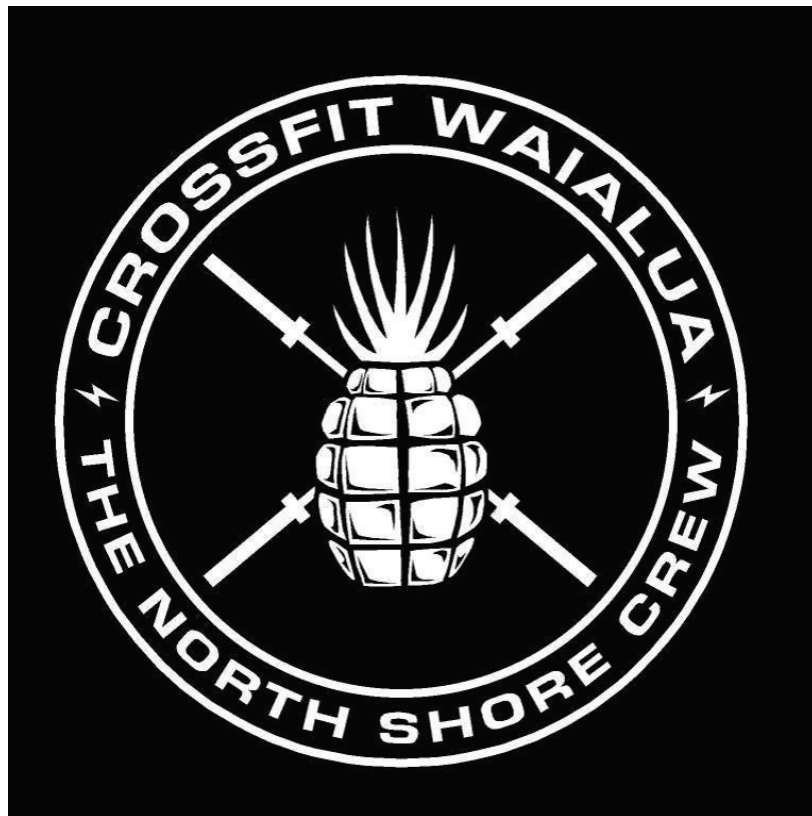
Come by and enjoy Pupus, Listen to some Live Music, Door Prizes and just talk story. Coach Levi and many of our members will be more than happy to help you explore your curiosity. Our up and coming retail store has been stocked with a new order of shirts, all your PROGENEX supplement needs, stickers all available for purchase. So come check us out ... we'd love to see you. Here's the info...

GRAND OPENING

Saturday, April 12, 2014

5:30 PM - 9:00 PM

67-456 Goodale Avenue Waialua, HI 96791



Join our North Shore Crossfit Crew for an evening of

~PUPU'S & REFRESHMENTS ~ LIVE MUSIC by REBEL SOLJAHS 7PM-8PM~
DOOR PRIZES

DISCOUNTED GRAND OPENING NEW MEMBER RATE \$150 (Reg.\$175)

DISCOUNTED RATE IS VALID ON THE NIGHT OF THE GRAND OPENING ONLY

Help us to celebrate the Ohana & the Lifestyle that is CROSSFIT WAIALUA! Check us out & see what the hype is all about..You just might find yourself at the start of a life changing experience

NORTH SHORE CHAMBER OF COMMERCE NORTH SHORE EXPERIENCE: Learn, Grow, Prosper



6TH ANNUAL BUSINESS EXPO PRESENTED BY WAIMEA VALLEY
Friday, May 2, 2014 • 8:00am - 6:30pm • Pikake Pavilion, Waimea Valley



ATTENDEE & EXHIBITOR REGISTRATION

Register by April 11 for the Early Bird Discount!

Registration Information

Attendees

Includes continental breakfast, sandwich buffet, Pau Hana Reception, all day program

	By April 11	April 12 - 25
North Shore Chamber of Commerce Members	<input type="checkbox"/> \$60	<input type="checkbox"/> \$80
Non-Members	<input type="checkbox"/> \$75	<input type="checkbox"/> \$95

Exhibitors

Includes booth space (1 booth sign, 1 6' table, 2 chairs) plus 2 exhibitor registrations

Exhibitor Name (For Booth Sign) _____

Exhibitor Registration Name 1 (For Badge) _____

Exhibitor Registration Name 2 (For Badge) _____

	By April 11	April 12 - 25
North Shore Chamber of Commerce Members	<input type="checkbox"/> \$250	<input type="checkbox"/> \$300
Non-Members	<input type="checkbox"/> \$300	<input type="checkbox"/> \$350
Non-Members Plus Membership *	<input type="checkbox"/> \$385	<input type="checkbox"/> \$435
Optional (1) Additional Exhibitor Registration		<input type="checkbox"/> \$50

*** \$40 discount on North Shore Chamber of Commerce membership for joining today!** Membership benefits include networking opportunities; free North Shore Chamber of Commerce Website listing with link to your Website; rackcard display at Visitor Center; discounts on events, meetings, workshops; historic preservation; and more

Total \$ _____

First Name _____ Last Name _____

Attendee Name (For Badge) *If Exhibitor, enter name for badge at left under Exhibitors* _____

Title _____

Organization (No Acronyms Please) _____

Street Address _____

City _____ State _____ Zip _____

Phone _____ Fax _____

Email _____

Emergency Contact Name _____ Emergency Contact Phone _____

Payment Information

Check Enclosed: Payable to NORTH SHORE CHAMBER OF COMMERCE

Credit Card: Please charge my Visa Mastercard

Name on Credit Card _____

Credit Card # _____ Expiration Date _____

Signature _____

Please complete all information and mail or fax registration form plus payment to the North Shore Chamber of Commerce. You may also call to register by phone. Please have all registration information and payment method ready when calling.

NORTH SHORE CHAMBER OF COMMERCE • GONORTHSHORE.ORG
66-434 B KAMEHAMEHA HIGHWAY • HALEIWA, HI 96712 • PHONE: (808) 637-4558 • FAX: (808) 637-4556 • EMAIL: info@gonorthshore.org

WAIALUA FARMERS' CO-OP MARKET

WAIALUA SUGAR MILL GROUNDS
SATURDAYS

8:30 A.M. – 1:00 P.M

BUY DIRECTLY FROM FARMERS

- KAHUKU FARMS
- FIELDS OF ALOHA
- TWIN BRIDGE FARMS
- DEL TROPICAL FLOWERS
- WAIALUA FRESH PRODUCE
- T & L PALMS AND FLOWERS
- WAIALUA COOPERATIVE FARMERS

- FOOD VENDORS
- STEAKOUT
- NORTH SHORE GOODIES
- SOMETHING SPECIAL BISCUITS & CAKES AND MORE

A MARKET MANAGED BY FARMERS
EDITH: 637-8589

MAHALO!

from the

North Shore Food Bank

The North Shore Food Bank distributed 6500 plus food bags in 2013! Thank you for all your support and donations, you are appreciated.

The North Shore Food Bank distributes food bags every Wednesday at the Hale'iwa gym from 9 a.m.-12 p.m.

Donations of non-perishable canned foods can be dropped off at the North Shore News office (above the Hale'iwa Post Office).

If you would like to contribute financially checks can be made out to:

Once A Month Church
P.O. Box 117
Haleiwa, HI 96712

For more information call 637-3138
Sponsored by North Shore News & Once A Month Church
501c3 non-profit



BULLETIN BOARD

NORTH SHORE FIX IT

Journeyman Capacity
Concrete, Framing (wood, metal)
Light Electrical, Plumbing,
Drywall-Hang, Tape & Texture
Drywall Patching, Painting, Pressure Wash
25 yrs experience - (808) 222-9381

ILAN FREITAS

c 808 372-8848
a any part of the island
e greenwaveslandscaping@yahoo.com



yard maintenance
grass planting
sprinkler system installation & repair
landscaping design & renovation
dirt removal
commercial & residential
no jobs are to big or too small



Ernie Doak Plumbing, Inc.

Quality without Compromise

NEW CONSTRUCTION ♦ RENOVATION ♦ SOLAR
Serving Oahu's North Shore for over 20 years

ERNIE DOAK cell 295-7943
Lic. #CT-22113 office 638-8620
Lic. #PJ-10630 erniedoakplumbing@yahoo.com

Want to go Off the Grid?
Let us show you how!



Your North Shore Solar Experts
554-2572

www.directelectrichawaii.com

Lic. # CT32543

"THE BULLETIN BOARD THAT IS IN EVERYONE'S HOME"

BULLETIN BOARD



Specializing in vegetarian foods, vegan foods, whole foods, organic food. Wheat free, dairy free, raw foods, gluten free. A complete selection of natural foods for 39 years. Make earth day, everyday. Open 7 days. Mon.-Sat. 9am-7pm. Sun. 9am-5pm

66-445 Kam. Hwy
Haleiwa, Hawaii 96712
Next to the Post Office
808-637-6729 • 808-637-1922 fax



DR. PORTER TURNBULL
Chiropractic Orthopedist
(808) 638-8740
Appointments available Mon.-Sat.
(evenings by appointment)

- Industrial accidents & auto injuries
- Sports injuries • Spinal care
- Safe, Effective, and Gentle

N-C PLUMBING & SUPPLY

Cont. Lic. No. C-8913



- RESIDENTIAL & COMMERCIAL SALES & SERVICE
- CONTRACTING & DESIGN • HOME PLUMBING SERVICE
- PLUMBING FIXTURES, HEATERS • FREE ESTIMATES

Nestor P. Calilao (Owner) Bus: 637-8662
P.O. Box 769 Res: 638-5157
Waiialua, HI 96791 Cellular: 372-8718

email: nnplumbing@hawaii.rr.com

www.oahuscreens.com



HOLOHOLO SCREENS, LLC

New window installation
New screens/re-screens
Pet proof screens
Porch enclosures

Sliding/swinging doors
Screen door roller repair
Pet grills and doors
Solar screens

FREE ESTIMATES • (808) 783-8764



It's been cold lately!

Perhaps you have an extra blanket or two, used or new to donate to our homeless neighbors. Drop off blankets at the North Shore News office.

A Warm Mahalo
637-3138

Munden Design & Build

Lic.#BC19632

Design • Plans • Permits • Construction
Additions & New Residences
808 391-8616

Providing quality work since 1978



License No. C28113

Commercial • Residential
Septic • Solar • Design

Mike 630-1407
Steve@offshoreplumbinginc.com

SUNSET AUTO SERVICE, INC.

- Auto air conditioning specialist
 - Auto engine maintenance
 - Safety inspection station
- Walking distance to Wahiawa DMV

Call for appointment
622-5510

Matt Verdadero
207 N. Cane St., #1 Wahiawa



Jay Oku
Loan Officer

(808) 393-0707
Office: (949) 281-3076

jay.oku@academymortgage.com
academymortgage.com/jayoku



NMLS #218211 | State Lic: CA #CA-D0C218211, HI #HI218211
Corp Lic: CA #4170013, HI #HI-3113 | Corp NMLS #3113 | Licensed by the Department of Business Oversight under the California Residential Mortgage Lending Act



WAIALUA LIBRARY UPCOMING EVENTS

Saturday, April 19, 2014
9:00am-2:00pm

Friends of Waialua Library Used Book Sale

Saturday, April 19, 2014 @ 10:00am
Children's Story Time & Easter Egg Hunt

Thursday, April 24, 2014 @ 6:30pm
Waialua High & Intermediate Art Show

Further information will be available in the next publication, or inquire at the library. Mahalo.



North Shore News



2014 Schedule

PUBLICATION DATE	EDITION	DEADLINE DATE
April 16	#8	April 3
April 30	#9	April 17
May 14	#10	May 1
May 28	#11	May 15
June 11	#12	May 29
June 25	#13	June 12
July 9	#14	June 26
July 23	#15	July 10
August 6	#16	July 24
August 20	#17	August 7
September 3	#18	August 21
September 17	#19	September 4
October 1	#20	September 18
October 15	#21	October 2
October 29	#22	October 16
November 12	#23	October 30
November 26	#24	November 13
December 10	#25	November 27

Direct-Mailed to Every Home
MOKULEIA • WAIALUA • HALE'IWA • KAHUKU • LAIE
 Every Other Wednesday
12,000 copies
 "The North Shore's most popular publication" since 1970
 (808) 637-3138 • NShoreNews@aol.com • NSN4Linda@aol.com
 www.northshorenews.com



North Shore News 2014 Special Editions

Publication Date	Edition	Deadline Date
April 16	Earth Day	April 3
May 14	Health & Wellness	May 1
June 11	Pets & NS Animals	May 29
July 9	Home Improvement	June 26



The North Shore News is published every other Wednesday and mailed free of charge to all North Shore homes and businesses. Extra copies may be obtained at our office.

PRESS RELEASE POLICY: Submit press releases in person or by fax, mail or email to Editor, North Shore News, 66-437 Kam. Hwy., Suite 210, Haleiwa, HI 96712. Please type your releases and keep them shorter than 200 words unless they are of an unusual news interest. Releases should be viable news stories and are published on a **space available basis only**, with priority given to those received in our office first. You may attach photos. We are not responsible for the return of any photos. All materials are submitted at owner's risk. We reserve the right to edit and/or refuse all submissions including advertising.

EDITORIAL POLICY: We welcome articles and letters from our readers. Letters to the Editor are published on a space available basis only and preference is given to shortness of length, and quality of content. We prefer to run not more than one letter, per person, per 6 month period. Letters subject to edit.

Views expressed by our contributing writers and advertisers do not necessarily reflect the view of the management and staff of the North Shore News. All rights reserved. Reproduction in whole or part without permission is prohibited. © 2014.

Editor & Classifieds

Linda Seyler

Typography

Downtown General Store

Contributing Writers

- Betty Depolito
- Naty Hopewell
- Choon James
- Ryan Lorne

City Councilman Ernie Martin

State Representative Lauren Matsumoto

State Representative Richard Lee Fale

Photography

Banzai Productions
Ole Seyler



Please recycle this newspaper.

CLASSIFIEDS

SERVICES

SHORE ELECTRICAL SERVICE
New Const-Remodels
638-0049 / Lic#C20777

PARADISE PLUMBING INC.
New Const • Repairs • Remodels
808-368-1473 / Lic. 29856

Handyman Services
Remodeling, Carpentry, Floors,
Concrete, all parts of Construction
Call Bob "The nicest guy in the
business" Ph. 282-2812

Greekz Plumbing LLC
Complete Service & Repair
Camera inspection/drain cleaning
"Got a leak? Call Steve the Greek"
808-372-1820 Lic#32939

North Shore Pumping
Septic and Cesspool Service
Clifford 638-0900 • 291-5099

Computer Problems?
I can fix any MAC or PC.
Chris 371-3089

**Traveling Professional
Housekeeper**
Dorothea M. Smith
808-258-6555

Carpentry & Painting Services
Repairs/Remodeling, Termite Rot
Doors, Cabinets, Countertops, etc.
Reasonable Rates 271-6584

Construction Services
Single wall, windows
New & remodels
Free Estimates
260-7386

Phil's Yard Service
and home care
888-4921

**ANGELS
PLUMBING**
Repairs
Remodeling
Renovation
638-7878
Lic. #C12004

Paumalu Electric Inc.
C 18074

Residential & Commercial
New Installation & Repairs
Renovations. Remodels
Electric Meter Replacements
Complete Install for Solar PV
Dave Hancock 638-9054

BOW WOW BUNGALOWS
Licensed Boarding Kennel
North Shore, Oahu
Reasonable Rates
Ph. 637-2562
These Dogs Have Fun!

HARVEY'S REPAIR, LLC
24 hrs Towing Service
*Specializing in opening
locked car doors*
Call any time 478-0333

N.S. Property Maintenance
Complete building & grounds
maintenance, painting int/ext,
demolding & power washing
specialist, carpentry,
fences & decks
Chris 381-5213/638-0659

**Malia's
North Shore Massage**
14 years experience
*Women by appointment
Men by referral*
(808) 375-3879
maliasnorthshore.massagetherapy.com

**Golden Rule
Lawn Care**
*Mowing, weed whacking,
hedge trimming, rake up,
light weeding & haul away.*
Call Matt 269-5020

**Next Issue - April 16, 2014
Deadline Date-April 3, 2014**

BIKRAM YOGA
****\$10 CLASSES****
3 p.m. Saturday &
Sunday
Please call for class schedule
637-5700

**Your Clean Home
Vacation/Residential
Home Cleaning**
Affordable • Reliable
• Green Cleaning
For Free Estimate
Call 638-0262 or 782-9941

BOBBY'S BODIES
Tuesday evenings at 5:00 p.m.
• Body Toning
Friday mornings at 9:00 a.m.
• Cardio Pump/Fat Burner
For more info: call Bobby, owner of
BOBBY'S BODIES at 637-4150

Aloha Computer
PC Repair/Virus Removal
Fax/Copy/Internet Access
372-2667 or 237-4558

SHIATSU • LOMI
Aromatherapy
Milica Barjaktarovic
Lic # MAT8348
351-0848
HumanRemodeling.com

DILLON SIGN
& Residential Painting
Haleiwa - 20 yrs exp.
499-9582

Waynebow
Window Washing
Residential • Commercial
New Construction • Free
estimates
223-4034

HOW TO CONTACT THE NORTH SHORE NEWS

Letters to the Editor, and other items submitted for publication consideration may be sent to us via:

MAIL: 66-437 Kamehameha Hwy., Suite 210, Hale'iwa, HI 96712

E-MAIL: NShoreNews@aol.com

PHONE: (808) 637-3138

Office Hours: Monday-Friday 1 p.m.-5 p.m.

www.northshorenews.com

CLASSIFIED ADS

GERMAN CAR SERVICE
Professional-Qualified
Technician
Call Gary
637-6800

PIANO LESSONS
Guitar, Ukulele, Bass,
Songwriting
637-4635

MISCELLANEOUS
Save the Sea Turtles Int'l and Adopt a
Beach and Highway Hawaii
BEACH CLEAN UP
Last Saturday of every month
10 a.m. • 61-529 Kamehameha
Hwy., Haleiwa, HI 96712
For more information 808-637-2211
Check out our website at:
http://adoptabeachhawaii.com

NS Food Bank
Food bag distribution
Wednesdays, 9am-11am
Waialua Comm. Assoc.
(Haleiwa Gym)

**NORTH SHORE
AUTO DETAILING**
Services
Wash, wax, vacuum, water spot removal,
paint sealant, light buffing
We also pressure wash sidewalks
driveways and more
For more info
Call Billy (808)371-0854
Prices may change upon inspection
of vehicles condition and size
We are mobile we come to you

LEARN TO SWIM
AT THE
**HAWAII SWIM
SCHOOL**
ON THE NORTH SHORE
Developing swimmers since 1982
Haleiwa Rd. at Smiley Place
637-4863

Classified Ad Rates
3 lines (min.) \$18.89
4 lines \$25.13
5 lines \$32.45
1" Box Ad \$41.88
(27 characters in each line)
Include your contact information.
**Ads can be dropped off in mail slot,
mailed, or emailed. Pay by check payable
to: North Shore News or credit
card by phone order.*
We reserve the right to refuse any
advertisement with a full refund.
North Shore News • 66-437 Kam. Hwy.,
Suite 210, Haleiwa, HI 96712
• (808) 637-3138 • NShoreNews@aol.com

Keep it Country
To report **ILLEGAL VACATION
RENTALS**
call 768-8159 or 768-8118
You will remain anonymous
**Illegal Vacation Rentals
are ruining the North Shore**
www.savenorthshoreneighborhoods.com


Business Services Center
Fast & convenient fax, copy,
scan, computer/internet,
laminare, etc.
Across from Haleiwa post office.
637-4558 or GoNorthShore.org

HELP WANTED
BUSSERS/SERVERS
Pizza Bob's in Haleiwa is looking
for BUSSERS/SERVERS. Experi-
ence preferred. Apply in person
at 66-145 Kam. Hwy.

**Please Report Stranded
Sea Turtles**
Call 983-5730 • Mon.-Fri., 7am-4pm
288-5685 pager wkends, holidays
587-0077 and after hours
Suspected Law Violations
541-2727 or 800-853-1964
NOAA Fisheries DLNR-DOCARE

**Statewide Hotline
for Litter**
1-888-592-2522
Callers need to provide:
1. License plate number
2. Make and model of
vehicle
3. Date and time and
location
4. What was thrown/
blown

Individual & Family Therapy
• Grief & Loss • Habits & Addiction
• Life Challenges & Transitions
• Clinical Supervision
Curielle Duffy, MA, MSW, LCSW, CSAC
808.633.3437 www.liferecovery.pro

COOKS/KITCHEN HELP
Pizza Bob's in Haleiwa is looking
for kitchen personnel. Experi-
ence preferred, but will consider
training the right people. Apply
in person at 66-145 Kam. Hwy.

*Aloha to:
Howard Doty
in La Jolia, CA*

New Hope Haleiwa
"Anchored to God's word,
led by his spirit" @Haleiwa
Elementary School
9:00am Service
621-9363

PILATES
with Linda Yadao
Private Equipment Classes Only
over 35 years of experience
call
808 637 1230
lindayadao@gmail.com

Position open to do
oil changes and tire repairs.
Apply K-Bros. 66-540 Kam Hwy.
Haleiwa

**North Shore News
Earth Day
Special Edition**
Publication Date April 16
Deadline Date April 3

**Voice of God
Ministries**
Jesus Loves You
If you need Prayer
Call 808-373-0294


**Marianne
Abrigo, Properties**
Specializing in -
North Shore
Real Estate
Ask for our list of avail-
able properties and/or a
free market analysis.
Marianne M. Abrigo
"Realtor since 1974"
Office 637-3511
Fax 637-0777
Email mabrigo222@aol.com

**Retail Sales
Surf & Sea**
Hawaii's Ocean Sports Headquarters
is always looking for hard working,
energetic people to become a part
of our sales team. Good pay, bonus,
benefits. Ocean sports experience
and/or bilingual a plus. Apply in
person daily 9am-7pm
62-595 Kam. Hwy., Haleiwa

OFF da ISLAND
Are you leaving Oahu on vaca-
tion or business? Do you live on a
neighbor island, the mainland or
foreign country and subscribe to
the North Shore News? Try send
us a photo of someone in front
of a sign or landmark holding a
copy of the NSN. Email your photo
along with the person or persons'
name, community of residence,
telephone number and photo loca-
tion to: NShoreNews@aol.com.

FREE ADS
Garage & Yard Sales,
Reunions, Lost & Found.
Email ad to:
NShoreNews@aol.com

Retail Sales Associate
**Polynesian Treasures
North Shore Marketplace**
Now hiring for PT/FT sales position.
Previous retail and management or
leadership experience a big plus!
Competitive wages plus
commission and bonus.
Fax resume to 637-8535
or email to
polynesian treasures@hawaii.rr.com

For Advertising Rates
Call 637-3138
or go to
www.northshorenews.com

Information needed: Seeking the
full name and/or address of a tree
trimmer/yard maintenance person
whose first name may be Albert.
Drives a white SUV. Works in the
North Shore area.
Please contact: Thomas E. Bush,
Esq. 808-524-1800

**Queen's
Open Market**
Sundays 1:00 to 5:00 pm
Liliuokalani Church

Malama Market Haleiwa:
Open Daily 7 a.m.–9 p.m.
(808) 637-4520

Malama Market Makakilo:
Open Daily 6 a.m.–10 p.m.
(808) 672-9955



Valid Dates:
4/2/14–4/8/14

Deals of the Week!

Strawberries
16 oz.

\$3.49
EA.



Rib Eye Steak
Bone-In, Value Pack

\$7.99
LB.



Dasani Water
24/500 ml.

\$3.99



Spam Luncheon Meat
Selected Varieties,
12 oz.

4/\$10



Hawaiian Sun Fruit Drinks or Nectars
Selected Varieties,
6/11.5 oz.

\$2.29



Malt-O-Meal Cereal
Selected Varieties,
12.5–13.5 oz.

2/\$4.50



Meadow Gold Ice Cream
Selected Varieties,
4 qt.

\$6.77



Chobani Selected Varieties, 6 oz. or Oikos Greek Yogurt Selected Varieties, 5.3 oz.

\$1.39



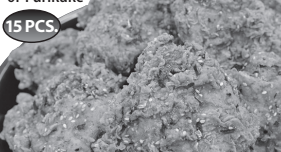
Brownie Bites
11 oz.

\$3.89
EA.



15 Piece Fried Chicken Thighs
Original, Korean, or Furikake

\$16.99
EA.



Corona or Heineken
18 Pk. Bottles

\$19.99

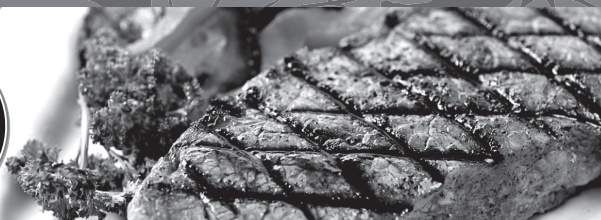


Thursday

Grilled Steak Lunch

7–8 oz. Steak, Rice, Tossed Salad, Drink

\$7.99



Hawaii Beverage Fee Hawaii Beverage Fee of 1.5¢ per can or bottle will be added to purchase price at checkout. An additional Hawaii Deposit Fee of 5¢ will be charged for all specially marked beverage containers.

Limit five units (mix/match) per purchase, unless otherwise specified. We reserve the right to limit quantities. No sales to dealers. Prices plus applicable state tax. Hawaii EBT cards welcomed.