



**“E Ala Na Moku Kai Liloloa”**

**Easter Services**

- North Shore Christian Fellowship...Page 3
- New Hope Central Oahu...Page 4
- Haleiwa Evangelical Mission International...Page 6
- Sunset Beach Christian Church...Page 10



NORTH SHORE NEWS April 16, 2014 VOLUME 31, NUMBER 8



(LtoR) Jill Komperda, Alika Napier, Avis Nanbu, Frank Hinshaw and Jacob Ng. Photo by Matt Johnson.

## Skydive Hawaii & Pioneer Corn Led Major Fund-raisers For Waialua High & Int. School Foundation

Shown above are Frank Hinshaw of Skydive Hawaii and Alika Napier of DuPont Pioneer, two of the largest of the many donations received by the Waialua High & Int. School Foundation. Receiving the replica of their donations is Avis Nanbu, Principal. The successful annual fundraiser was led by the Foundation Treasurer Jill Komperda and Jake Ng, President.

Skydive Hawaii President Hinshaw contributed \$5,000. His facility is the largest in Hawaii, with the world’s most beautiful drop zone. Skydive Hawaii was again selected as Hawaii’s No. 1 Skydiving Company in 2013 by people making their first jump. When asked about Waialua High School, he said that one of his employee’s children graduated from Waialua

High School, class of 2013. He also expressed a genuine caring for Waialua High & Intermediate School and the Waialua community. He especially thanked the WHIS Foundation for providing a way for him and other people in the community to support the hard work and educational efforts of public school administration,

*Continued on page 2*

PRE-SORTED  
STANDARD  
U.S. POSTAGE PAID  
Honolulu, Hawaii  
Permit No. 1479

66-437 Kamehameha Hwy., Suite 210  
Hale'iwa, HI 96712

PROUDLY PUBLISHED IN  
**Hale'iwa, Hawai'i**  
**Home of Kamehameha**  
**Schools-Hale'iwa**  
**Preschool**

Continued from page 1

students and staff.

The DuPont Pioneer organization has been in Hawaii since 1968 and contributed \$3,000 to the Foundation. Pioneer has four facilities developing new corn hybrids and crop seed for farmers. There are two such facilities on Oahu, including Kunia Research Center with 140 employees involved in plant science to produce new products to farmers in 280 acres. The other facility is the Waialua Parent Seed Production that employs 45 people, involved in 2,300 acres of crop production of corn, sunflower, and other sustainable agriculture. Similarly, Pioneer has two other facilities on Kauai. When asked about other than agricultural efforts, Alike Napier, Field Manager stated that DuPont Pioneer has donated funds and efforts to organizations in the area, including Waialua schools and the Chamber of Commerce. The latest community involvement was the adopting of the Waialua Bandstand and related grounds.

Principal Nanbu was elated with the results of 2013's fundraising and thanked the Foundation for their efforts to facilitate the educational opportunities of the school. In fact, she came up with a whole list of school needs, including efforts to revive and transform the long vacant school library, support to History Day Social Studies, preparing students in taking various statewide assessments, and other school needs.

The Waialua High & Intermediate School Foundation, a 501 (c)(3), nonprofit organization, invites anyone interested in improving school education quality, please contact Jill Komperda, phone no. 637-7499. Any donations should be made payable to: Waialua High & Int. School Foundation, 67-160 Farrington Highway, Waialua, Hawaii 96791.

If you would like your business or organization featured on the cover in the "Proudly Published in Hale'iwa Hawai'i Home of..." box, send an email to NShoreNews@aol.com with your information.

66-037 Kam. Hwy., Ste. 3  
Haleiwa, next to Growing Keiki

**Saccoccio & Lopez**  
ATTORNEYS AT LAW  
Serving Haleiwa since 1984

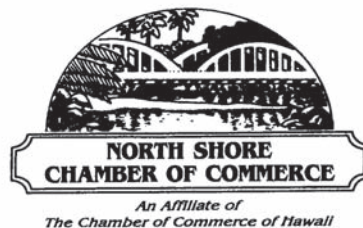
*Bankruptcy  
Personal Injury • Criminal Law  
Landlord/Tenant  
Traffic Offenses • DUI*

**Family Law**  
*Adoption • Custody • Divorce  
Paternity • Guardianship  
Deeds, and Wills*

Notary Public

**637-7611**  
VISA/MC Accepted

*Paul & Nita*



**North Shore Chamber of Commerce  
6th Annual Business Expo  
"The North Shore Experience:  
Learn, Grow, Prosper"  
Friday, May 2, 2014 at Waimea Valley**

This event will bring together businesses and nonprofits from Kaena to Kualoa that make up the unique North Shore experience including agriculture, dining, retail, art, manufacturing, ocean sports and recreation, and visitor attractions in the beautiful setting of Waimea Valley. It will focus on what's special about the region as well as provide opportunities for growing your business. Businesses and others that are part of this North Shore Experience as well as those that serve the North Shore region are invited to participate in this event. For more information call the Chamber at (808) 637-4558. See page 18 for registration.

**The Hale'iwa Family Dental Center, Ltd.**



presents

**"Comfort Dentistry"**  
including—

- Relaxation Glasses
- Television Glasses
- Caring Staff
- Special Medication to help you relax
- Laser Cavity Detection
- New Patients Welcome!

Your teeth are much too important to neglect.

**Call: 637-9652**  
for your reservation

We're conveniently located behind First Hawaiian Bank  
in the heart of Hale'iwa.

You are invited to  
**EASTER SONRISE SERVICE**  
 HALEIWA ALI'I BEACH PARK

Good Friday Service  
 4/18 - 7:00pm

"Worship HIM"  
 4/19 - 7:00pm

Easter SONrise  
 4/20 - 6:30am



HOSTED BY NORTH SHORE CHRISTIAN FELLOWSHIP



**WAIMEA VALLEY**  
 WHERE HAWAII COMES ALIVE

Sunday, April 20  
 10 AM & 12 PM (Two Seatings)

**EASTER BRUNCH**

Join us for Easter Sunday brunch!  
 Please call for reservations



Tuesday, April 22

••• VOLUNTEER OPPORTUNITY •••  
**EARTH DAY CLEAN UP**

Help keep Waimea Valley beautiful!  
 Join us as we clean the Valley  
 estuary and beach; please call for  
 more information



Thursday, May 1  
**MAY DAY**

May Day is lei day! Enjoy Waimea  
 Valley's world class botanical  
 gardens with a lei making contest  
 and many more festivities

On the North Shore across from Waimea Bay  
 Open 9 AM - 5 PM Daily • Call: (808) 638-7766  
[WAIMEAVALLEY.NET](http://WAIMEAVALLEY.NET)

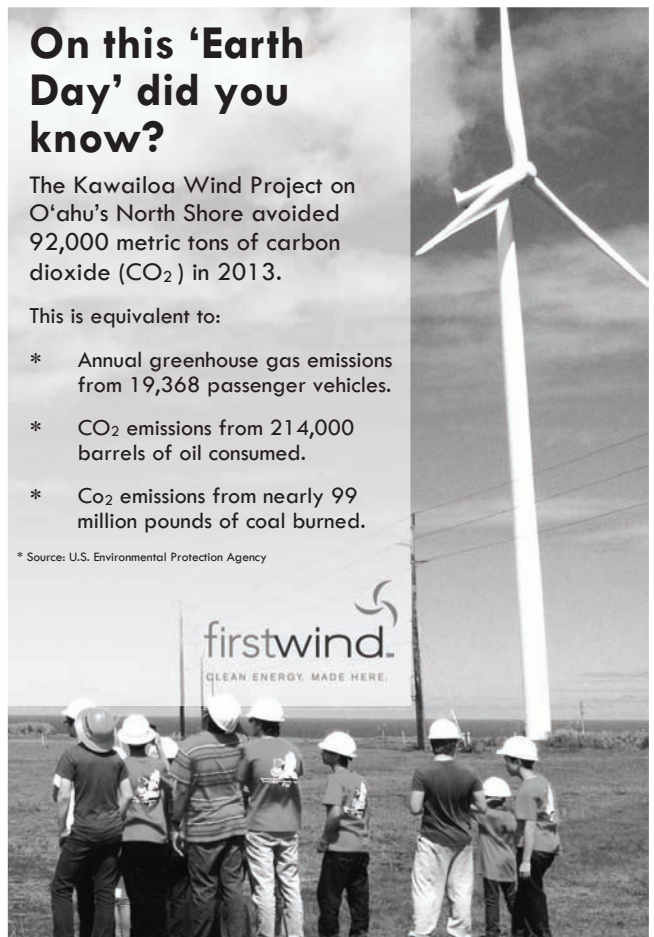
**On this 'Earth Day' did you know?**

The Kawaiiloa Wind Project on O'ahu's North Shore avoided 92,000 metric tons of carbon dioxide (CO<sub>2</sub>) in 2013.

This is equivalent to:

- \* Annual greenhouse gas emissions from 19,368 passenger vehicles.
- \* CO<sub>2</sub> emissions from 214,000 barrels of oil consumed.
- \* CO<sub>2</sub> emissions from nearly 99 million pounds of coal burned.

\* Source: U.S. Environmental Protection Agency



# NEW HOPE CENTRAL OAHU HOPE IS ALIVE

APRIL 13, 2014 PALM SUNDAY SERVICE 9AM @ HALEIWA ELEMENTARY SCHOOL

APRIL 13, 2014 WORSHIP CONCERT "HOPE IS ALIVE" 7PM @ MILILANI TECH PARK,  
100 KAHELU AVE. STE. 220

APRIL 16, 2014 EXPERIENCE A TRADITIONAL PASSOVER CELEBRATION 6PM  
@ HALEIWA ELEMENTARY SCHOOL.

APRIL 18, 2014 GOOD FRIDAY SERVICE 6PM @ HONOLULU CONVENTION CENTER

APRIL 19, 2014 EASTER VIGIL 6PM @ HALEIWA ELEMENTARY SCHOOL

APRIL 20, 2014 "HOPE IS ALIVE" EASTER CELEBRATION 9AM @ HALEIWA ELEMENTARY SCHOOL.



## Celestial Celebrates Earth Day 2014 Saturday, April 26 & Sunday, April 27, 2014

Earth Day is a special time for us here at Celestial Foods. It gives us a special time to feature a huge selection of products that compliment Earth Day. We support local organic farmers and bring our community household cleaning products that are safe for your home and environment. This year Celestial Natural Foods will have a two day sale featuring all of our products at 20% off. Now is the time for many of you to try out the new products and check out the line of all the organic foods we carry. Going green is good, for all of us, and for Mother Earth. Have a great Earth Day 2014. Hope to see you this weekend for our Earth Day storewide sale. Remember Earth Day is Everyday!

### Celestial Natural Foods Earth Day Celebration

Come help us celebrate Earth Day  
on the North Shore!



**SATURDAY, April 26, & SUNDAY, April 27**

**MAHALO & ALOHA!**

In downtown Hale'iwa  
66-443 Kam. Hwy. Ph: 637-6729  
Next to the Hale'iwa Post Office



**Council Chair**  
**Ernie Martin**  
**Serving You in District 2**

**City Capital Improvements Projects FY 2015 – North Shore**

In the early morning of January 18th, a fire that was intentionally set, badly damaged the bathroom at Kaiaka Bay Beach Park. Sadly, the structure suffered significant damage. Fire officials reported that the blaze began in one of the stalls and spread to the roof with damages estimated at \$100,000. The city administration funded repairs for a renovation of the facility as a line item in the FY 2015 Budget, listed as Project # 2002072. This solution was deemed inadequate by the North Shore Neighborhood Board and its members voted in favor of a total replacement instead of a renovation. In response to this request, I will be initiating an amendment to the budget that will increase funding to build a new comfort station that is ADA compliant. My inclusion of \$500,000 to the budget bill will be in addition to the \$400,000 construction funds for the project noted above. This is a prime example of how negligence or deliberate destruction of public property affects all of us who have to foot the bill.

The Neighborhood Board also requested that the play-tot equipment at Aweoweo Beach Park be repaired. The Department of Design and Construction indicated that the necessary funds are in the works but must be spent before June 30, 2014. To insure that this project materializes, I added the full funding for the replacement of the equipment to the current budget.

At the last meeting of the Sunset Beach Community Association, members requested that the Pupukea Beach Park Master Plan also include planning and design funds for a safe and environmental friendly pathway into Sharks Cove. Thousands of people access the cove and have a pronounced impact on the surrounding area, causing erosion of soil that finds its way into the ocean. In spite of the importance of this issue, the City did not include beach access as a part of the master plan for the area. Consequently, I included \$250,000 for the planning, design and construction of a Sharks Cove pathway in the FY 15 budget.

Some other highlights of the capital improvements in the FY 2015 budget bill are; Project # 1977069 – Hale'iwa Beach Park – Plan, design and construct park improvements - \$1,000,000 Project # 2015078 – Waialua District Park – Play park apparatus - \$250,000 Project # 2015080 – Comfort Stations – Mokuleia Beach Park - \$224,000 Project # 2002072 – Renovate Recreational Facilities also

includes various parks improvements for construction at Mokuleia-\$90,500; Pupukea-\$92,700; and Waimea-\$32,000.

During the next few weeks, the Council will continue deliberations on the budget bills that cover the City's operating expenses and capital improvement projects for next year. The FY 2015 budget begins on July 1, 2014.

**HE IS RISEN "After three days, I will rise again."** Matthew 27:63  
As you gather your family together during this Holy Season, we wish you and yours a bountiful share of HIS blessings and a most happy and fulfilling Easter.

**GLUTEN FREE!**  
**PIZZA BOB'S**  
Haleiwa Town Center - 637-5095  
**We Have Gluten Free Pizza Crusts and Cheese Ravioli Available!**  
**\$2.00 Off with this Coupon**  
Some Restrictions Apply. See Restaurant for Details. When Ordering Regular Priced Items. Good Anytime. One Coupon Per Person. Can Not Be Combined with Other Discounts. Expires 06/30/2014.

Our PKB Ohana wishes you and your family a wonderful Easter Sunday!  
**All of our goodies are locally made with ALOHA!**  
**MADE FRESH FOR YOU IN WAIALUA TOWN**  
**We have the perfect treats for celebrating Easter with your family!**

# RELAY FOR LIFE 2014

Help the Ko'olauloa and North Shore community fight back against cancer and join us for our annual **RELAY FOR LIFE - KO'OLAULOA!**



FRIDAY, APRIL 25 - SATURDAY, APRIL 26  
6:00 P.M. TO 6:00 A.M.  
KAHUKU DISTRICT PARK

For more info, please email [rflkoolauloa@gmail.com](mailto:rflkoolauloa@gmail.com) or visit [www.relayforlife.org/koolauloa](http://www.relayforlife.org/koolauloa).

We're still looking for sponsors, teams and participants so please contact us today!

Bring your business or family down for an evening full of food, activities, entertainment and more. Join us for an evening to celebrate, remember and fight back against cancer.

## WAIALUA LIBRARY UPCOMING EVENTS

Saturday, April 19, 2014  
9:00am-2:00pm

Friends of Waialua Library Used Book Sale

Saturday, April 19, 2014 @ 10:00am  
Children's Story Time & Easter Egg Hunt

Thursday, April 24, 2014 @ 6:30pm  
Waialua High & Intermediate Art Show

Further information will be available in the next publication, or inquire at the library. Mahalo.



## JESUS IS ALIVE

**EASTER SERVICES**  
APRIL 20, 2014  
7:30 AM

**WAIALUA COMMUNITY ASSOCIATION** (Across the Haleiwa Post Office)

Sponsored by Haleiwa Evangelical Mission International

Guest Speaker: **RAFAEL ESCALERA** 808-637-4567  
Business Administrator for The Salvation Army Adult Rehab

Please stay after services for light refreshments!



**State Representative**  
**Richard Lee Fale**  
**Serving You in District 47**

**Making Every Dollar Count  
 for Our Environment**

Everybody is better served by cleaner air, cleaner water and healthy soil. Earth Day is a reminder of the beauty of our natural surroundings and helps us remember to protect and preserve our environment. The health and well-being of our natural environment is not only connected to our own physical health and well-being but is directly connected to our economic health and well-being as well.

In Hawaii Earth Day has a very special meaning. Over the past several months, I joined other legislators and hiked into the Ko'olau mountain range, and the slopes of Kilauea on the Big Island to get an up close and personal look at the damage and destruction caused by invasive plants and animals, including wild pigs, goats, sheep, donkeys and cows. These trips have been important in understanding the damage that is being done and seeing first-hand where and how millions of dollars of our taxpayer's money is being spent. The Legislature has a consistent stream of funding requests for many environmental projects across the state and I value seeing some of these projects and hearing from those who are trying to protect and preserve what we have, and restore what we can. By moving forward in these efforts in a fiscally prudent way, we can better use the funding that we have to accomplish more.

One such example is Senate Bill 3036, which came over from the Senate and puts together a beach management plan from Sunset Beach to Waimea Bay for \$400,000. In an effort to make sure that we are judicious and effective in the way money is spent, the House was able to double the size of the planning area from Waiale'e to Kawaihoa at no additional cost. As we move forward with our future planning efforts, we can make sure that every dollar counts and that we get the biggest bang for every dollar we spend by creating a central repository for history, research and studies for major environmental projects. By creating an easily accessible archive to keep record of important and often costly studies and information, we can increase transparency, community involvement and prevent spending millions replicating studies we have already performed.

For example, in 2007 we appropriated \$1.2 million to study the Laniakea issue, then in 2009 we appropriated another \$1.7 million for the Laniakea issue. Today we have another measure, Senate Bill 3035, which authorizes an undetermined appropriation to a Laniakea study. While studies and research

are important to making sure we are protecting our environment and access to beaches and cultural sites, we do not want to spend money doing the same thing year after year to avoid permanent solutions being made.

I look forward to advocating for greater stewardship of our limited resources on behalf of our community.



*Representative Fale.*



# HAPPY EASTER

"Da Best"

**Mix and Match Special!**

**Butter Roll / Sada's Malassada / Brownie**

Buy 3, get 10% off  
 Buy 6, get 15% off  
 Buy 1 dozen, get 20% off

---

**Easter Sunday 1-Day Special**

**Hot Cross Buns**  
 Buy 6, get 15% off  
 Buy 1 dozen, get 20% off

**www.pkbsweets.com**

Offer not combinable with other offers or promotions. Offer expires April 30, 2014. Special Easter offer only valid on Easter Sunday.



**Representative  
Lauren  
Matsumoto  
Serving You in District 45**

It is my honor to introduce and recognize Hannah Button of Waialua for her achievements in community service, innovative project creation, and overall volunteer commitment for the greater good. Hannah was named as one of Hawaii's top two youth volunteers of 2014 in the Annual Prudential Spirit of Community Awards.

The Prudential Spirit of Community Awards program was created in 1995 by Prudential Financial, in partnership with the National Association of Secondary School Principals, to emphasize the importance our nation places on service to others, and to encourage all young Americans to contribute to their communities through volunteerism. Students like Hannah Button represent the best of America's youth and are role models for their peers and communities.

As a State Honoree, Hannah received a \$1,000.00 award, an engraved silver medallion, and a trip to Washington, D. C., May 3-6 for a series of national recognition events. She is also being considered as one of ten National Honorees who will receive additional awards and a \$5,000 grant from The Prudential Foundation for a charitable organization of their choice during the May events in Washington.

Hannah was nominated by Trinity Lutheran School in Wahiawa, where she attends eighth grade. With more than 30,000 young people participating across the country this year, this award represents the best in our upcoming youngsters and their commitment to community service improvement projects and initiatives.

Hannah created and implemented a project in 2012, "Operation Holiday Heroes," that provided holiday gifts to sick and wounded American soldiers. Her initiative included recruiting classmates, friends, and neighbors to donate gifts for her mission. She also raised money through a website and neighborhood events, enabling her to purchase household supplies and assemble fifty gift bags for service members recovering at Tripler Army Medical Center, and their visiting families staying at the Tripler Fisher House.

Hannah was so inspired by her experience that she expanded her mission to include gift giving to these service members and their families on Valentine's Day and Independence Day. She also helped raise money to support the 2013 "Remembrance Run, Walk, or Roll" event that honored all American service members killed in combat since September 11, 2001.

Hannah's exemplary attitude and aspiration to be a change agent at such a young age speaks volumes about her future success, and her allegiance to the

betterment of our community and our State. Please join me in congratulating Hannah Button for a job extremely well done! Please also help me in congratulating Hannah's parents, Mark and Diane Button, and her brother Jack, who also won this distinguished award in 2012.

Serving you and the entire State of Hawaii as a State Representative is an extraordinary privilege. Please contact me at (808) 586-9490 or at RepMatsumoto@Capitol.Hawaii.gov with your questions or concerns. Also, please visit me at RepMatsumoto.com to sign-up for updates on issues you care about.



*Hannah Button with Rep. Matsumoto.*



## Polynesian Treasures

*Hawaii's largest selection of Polynesian  
handicrafts and Hawaiian inspired gifts.*

North Shore Marketplace \* Haleiwa, Hawaii  
Open daily from 10 am \* (808) 637-1288

ROBERT M.

**PAGAN CONSTRUCTION COMPANY**

**(808) - 499 - 8617**

New construction / Additions / Remodels - Lic # 32866 Bonded / Insured  
www.robertpaganbuilders.com





# North Shore Outdoor Circle Tree Mapping Project

*The best time to plant a tree was 20 years ago. The next best time is now.*

~Chinese Proverb

The new North Shore Outdoor Circle (NSOC) Tree Committee had its first meeting on March 11, 2014. Our mission—to identify all trees planted by the club in the late 1950's when the Waialua Branch first started doing their good works, to 1987 when the Waialua Branch was re-introduced as the North Shore Branch.

Through our historical records and talking with members who participated in the plantings over the years, the Committee believes that residents and visitors to the North Shore will enjoy viewing all the tree locations, from Kahuku to Ka'ena Point. People can see for themselves how the Club's work has enhanced our public spaces, schools, neighborhoods, and parks.

The Committee plans on mapping the locations, species, dates of trees planted, as well as any re-planting that may be done in the future. Once completed, the group will create a brochure for a fundraising tour to be held in 2015. In time, the brochure will be available for self-guided tours as well. The Tree Committee will serve as a go-to place for community members who see any problems with North Shore trees in public spaces. The group is also willing to consult and provide assistance to other community groups or individuals with future tree planting projects.

We'd like to talk with anyone interested in our Tree Mapping project. We also look forward to meeting you at our next general membership meeting on Tuesday, April 29th - 10:00 a.m. at Waimea Valley.

Mark your calendar:

Date: Tuesday, April 29, 2014  
 General Membership Meeting  
 Time: 10 a.m. - 12 p.m.  
 Location: Waimea Valley

The North Shore Outdoor Circle members are invited to attend the General Membership meeting on Tuesday, April 29th - 10 a.m. at Waimea Valley. All interested persons in the community are welcome to attend. After our Club announcements, we are pleased to have David Orr, Waimea's Botany Specialist, talk about Waimea's Botanical Collections and "What's New and What's in Bloom."

Date: Monday, May 19, 2014 - "Written in Stone" Presentation by Ann Gommers. Sponsored by Waimea Valley and the North Shore Outdoor Circle  
 Time: 7 p.m. - 9 p.m.



Location: Waimea Valley  
 RSVP: 638-5695

Ann Gommers, Board Member of the North Shore Outdoor Circle and local painter, tells a compelling story illustrated by Peter Gommer's beautiful photographs about the transfer of part of her family's land back to the Passamaquoddy Tribe in Maine. The transferred land includes the largest petroglyph site on the Atlantic Coast. Ann also shares the photographs that her husband has recently taken of the seldom seen or studied petroglyphs at the Hale'iwa end of Sunset Beach and speaks of their similarities to the petroglyphs in Maine. While the Sunset Beach petroglyphs last appeared in full form in 2005, last February's 50 foot wave pulled 10 feet of sand away to expose them once again. Because of their inaccessibility, this local site has been studied the least when compared to the many petroglyph sites found throughout the Islands of Hawaii.

LIKE us on Facebook - TOCNorthShore. More information about our Tree Committee and Upcoming Events is available at: <http://www.outdoorcircle.org/north-shore.html>

## KUA'AINA



*The Best!*

· IN HALEIWA ·

637-6067

· IN HONOLULU ·

591-9133

AT WARD CENTRE

HALEIWA · TOKYO · HONOLULU · LONDON



**State Senator**  
**Clayton Hee**  
**Serving You in District 23**

Aloha kakou,

For many years, I have supported the state and community's efforts to address the flooding problem that has afflicted the Kahuku community. Since a 100-year storm flooded the area in 1991, the Kahuku community has worked diligently to find a flood control solution to address the persistent damage to Kahuku High School's gym, library, track and field, and band room in addition to prolonged road and school closures. I have worked closely with community members, state legislators, state agency leaders, and county council members to find a comprehensive long-term solution to this problem.

On Friday April 4, 2014, I took a tour of the Kahuku High School campus to view the damaged facilities and gain a deeper understanding of the difficulties students face due to these ongoing floods. To address the flooding issue plaguing Kahuku High and Intermediate School, the State Senate passed a Senate Concurrent Resolution requesting the State Depart-

ment of Education (DOE), State Department of Land and Natural Resources (DLNR), City and County of Honolulu, and U.S. Army Corps of Engineers (USACE) to form a working group to provide recommendations on long-term solutions. I encourage this collaborative effort because it is imperative to helping the community find a creative solution. Currently, this resolution awaits approval by the House of Representatives.

I look forward to continuing to work with the Kahuku community on addressing issues of concern. Please feel free to contact my office if you have questions about community issues.



Call for daily specials

**840-0223**

Phone orders welcome

Come and enjoy some local kine grindz!!

Located next to Haleiwa Post Office

# GOOD FRIDAY

## Interactive Worship Experience



Thursday April 17th | 6-9 pm

Friday April 18th | 5-10 pm

# EASTER SUNDAY!

## Worship Music, Bible Message & Communion

### Sunday April 20th | 9am & 11am lunch to follow..

**We invite YOU to celebrate with us!**

**SUNSET BEACH CHRISTIAN CHURCH**

**59-578 Kamehameha Hwy. Haleiwa | [www.sbccs.org](http://www.sbccs.org)**



**HALE'IWA ARTS FESTIVAL**  
2014 FUNDRAISER

**AN EVENING AT DILLINGHAM RANCH ESTATE**

SUPPORTING NORTH SHORE FINE ART PROGRAMS

**FRIDAY • MAY 9 • 6:30 ~ 9PM**

Please join us under the trees of the "Big House"  
at historic Dillingham Ranch in Mokuleia  
for Cocktails, Heavy Pupus, Silent Auction and Entertainment!

**LIVE MUSIC BY**

**TAIMANE GARDNER & IAN O'SULLIVAN**

TICKETS ARE LIMITED - PURCHASE YOURS TODAY!

**\$65 / PERSON**

NAME \_\_\_\_\_  
 EMAIL \_\_\_\_\_  
 PHONE \_\_\_\_\_ # TICKETS



MAIL TO:

**HALE'IWA ARTS FESTIVAL**  
P.O. Box 1141 • Hale'iwa, HI 96712

**COMMUNITY4ART**

For more event information visit [HaleiwaArtsFestival.org](http://HaleiwaArtsFestival.org) / 808.637.2277

Come Visit Us! Haleiwa Town Center



808.315.6780 • [julianandcoco.com](http://julianandcoco.com)

**17TH ANNUAL HALE'IWA ARTS FESTIVAL**

HALEIWA BEACH PARK • JULY 19 AND 20 • 2014

**HAWAII POLO CLUB**  
**SEASON 2014**

**“POLO IN PARADISE”**

Exciting Polo by the Pacific runs  
through Sunday, August 31

**DILLINGHAM FIELD**  
**MOKULEIA**

**Gates Open at 12 noon - Polo at 2pm**

**\$10 General, \$8 Military w/ I.D., \$25 Clubhouse Reserved**

**For Information Call 738-POLO**

**Brought To You By The Equus Hotel**

**Your home in Waikiki**

Please ask for POLO special for a 20% discount  
Located near Ala Moana Shopping Center



## Estuary Earth Day Cleanup

Waimea Valley in partnership with Malama Pūpūkea-Waimea will be celebrating Earth Day on April 22nd by cleaning up our estuary and the Waimea beach. Please meet at the Waimea Valley Visitor Center by 9 a.m.

Waimea Valley is truly a special place and unlike anywhere else on Earth. It was one of the first settlements by the first Polynesian Voyagers and became one of the most sacred valleys known as “The Valley of the Kahuna (Priests)”. Today, it is comprised of 1,875 acres of conservation land and approximately 150 acres of botanical gardens. Waimea is also a place where you can see Hawaiian culture being practiced daily and “The Bay” is a Marine Life Conservation District and one of the most well-known big wave surfing spots. Waimea’s estuary is also home to many native species, including some endangered waterbirds. Over the years, Waimea Valley staff and volunteers have worked to remove invasive weeds, plant thousands of native plants, and conduct bi-annual waterbird surveys in the estuary. In a recent collaboration with the U.S. Geological Survey and the Office of Hawaiian Affairs, Waimea Valley has installed a real-time data gathering stream gauge three miles inland to alert us of flood waters. This gauge helps us to improve overall safety of our guests and also aids in the planning of wetland restoration efforts.

Waimea Valley is committed to protecting its natural resources and would like to invite the community and its visitors to get involved by joining us on our Estuary Earth Day Cleanup. We will begin at 9 a.m. with a traditional Hawaiian oli (chant). The cleanup will start at the Visitors Center and work down river to the estuary and beach. Participants are asked to please bring water, hat, sunglasses, and sunscreen. We should be finished with the Earth Day Clean up at approximately noon. We will provide participants with gloves and trash bags.

For more information contact Laurent Pool or Ryan Belcher at (808) 638-5877 or [lpool@waimeavalley.net](mailto:lpool@waimeavalley.net) or [rbelcher@waimeavalley.net](mailto:rbelcher@waimeavalley.net)



## “April is Tsunami Awareness Month”

### Message from the North Shore Disaster Preparedness Committee

The phenomenon we call a tsunami is the Japanese term meaning “harbor wave.” As such, it is most descriptive of the phenomenon frequently referred to as tidal or seismic sea wave. Tsunamis, although infrequent, are capable of causing considerable loss of life and property anywhere along the coastal areas. Locally generated earthquakes can produce a Tsunami within 25 minutes. If you feel the ground shaking significantly and are near the coast, leave your car and walk quickly Mauka. There is not enough time to drive and it will only create gridlock.

Alaskan Earthquakes would take approximately 6-10 hours to reach us. Tsunami characteristics include: Can be hundreds of miles wide, it can range from a few inches to several hundred feet tall and can travel at speeds up to 500 mph. The State of Hawaii uses a series of warning sirens setup around the islands. If you are in a low lying area and hear a steady siren that lasts longer than a minute, go to higher ground immediately. If you are unsure if you live in a flood zone look in the Oahu phone book in the Disaster Preparedness Guide section for the Tsunami Evacuation Maps. You can also check out the Tsunami Evacuation Zone Maps on the Hawaii Department of Emergency Management website using this link: <http://www.honolulu.gov/dem?mapname=>

For more information about Disaster Preparedness for the North Shore, contact the North Shore Disaster Preparedness Committee (NSDPC) at [www.nsdpc.org](http://www.nsdpc.org) The NSDPC is a volunteer, community-based group united in preparing the North Shore community for disasters through planning, education, training, response and relief. The group’s main goals are:

1. To motivate members of the community to prepare themselves, their families, and businesses for potential hazards
2. To recruit people for the Red Cross Shelter training and Community Emergency Response training (CERT); and
3. To develop a North Shore community preparedness plan

The fiscal sponsor for the NSDPC is the North Shore Chamber across from the Haleiwa Post Office. So, stop by or call the Chamber at 637-4558 for more information or to volunteer to help the North Shore be prepared.



## Happy Easter!



Zoe McDougall



## BANZAI NORTH SHORE WIRELESS

Money, surf, money. Stab Magazine did a story on the most money making surfers and John John Florence is at the top. A five year 3.2 million a year contract with Hurley makes him the most marketable surfer. His other sponsors Monster, Vans, Stance, Spy, Pyzel and Futures. His contest earnings about \$165,000.00 adding up to about 5 million a year. In second Dane Reynolds then Kelly Slater both at about 3.9 million. Big news is that Slater has signed with a new company, The Kering Group, after a 23 year relationship with Quiksilver. The luxury brand has companies like Gucci, Bottega Veneta, Sergio Rossi, Puma, Volcom, Cobra, Electric and more. No word on what the partnership will be. But it will be big! Yes, Mom's want their sons to be surf stars!

Marine biologist and surfer Terry Lilley has been studying our reefs, rivers, bays and surrounding waters here in Hawaii and has found that our marine environment in the Hawaiian Islands is suffering from problems related to rising sea levels, salt water intrusion, sediment run-off, development, bacterial growth and pollution. Recently he was diving in Kawela Bay and found some wonderful healthy corals in less than ten feet of water. He did find some sediment damage but he "hopes that there will be no more development in the area that will kill the old growth mound corals." He also said, "We found a few blue rice corals in the bay. This is a species that NOAA may list on the endangered Species list." He went on to report that "The low lying wetlands along the coastline filter our rain water before it goes out onto the reef. Damaging any low lying areas along this part of the coastline will cause less filtering process and will kill the fragile reef." In other parts of the United States there are laws against this type of coastal development but not in Hawaii yet. For more information find him online at <http://underwater2web.com>.

Congratulations to champ Zoe McDougall from Sunset Beach who recently won the Volcom Puffer Fish event at Makaha. McDougall is a determined 14 year old who like many other North Shore kids wants to go on the World Tour. Good Luck! Results: Dax McGill 2nd, Sunshine Patey 3rd, Julie Nishimoto 4th, Emily Nishimoto 5th and Kealohi Sabate 6th.

Paddling season is coming up. Surftech just announced that they will be supporting the Molokai to Oahu World Championship race. The "Channel of Bones" as it is called was developed by athlete Mike Takahashi who is still the race director. Get your paddle on, you have four months to train, the race is

Sunday July 27. Surftech is the place to find a board they have been developing a wide variety of high performance craft for 25 years. Seriously they have everything and yes this is a giant plug, they deserve it!

Also not so far away is Surf n Sea's SUP race May 1 right in Hale'iwa. It is always a fun start of the season, entries are out.

Below Mt. Kaala lies Waialua High School where sports are growing. Athletic director Bryce Kaneshiro has been working at increasing sports participation at the school. "Sports provide lots of learning skills you don't get in a classroom like camaraderie, perseverance and working with others," said Kaneshiro. "Anytime we can motivate our kids to get good grades and to be active that is a good thing." Kaneshiro recently noticed there were some good women swimmers at the school and put together a water polo team headed up by local athlete Todd Sells who has had plenty experience in the sport. "The team has had some recent success as the divisions were changed around and it is exciting," said Sells. "We also have some interesting personalities and lots of surfers on the team." Check them out, they play at The Patsy T. Mink Central Oahu Regional Park located in Waipio. Surfing, sorry to say, is not considered an OIA sport but they do have a "surf club".

Congrats to part-time North Shore resident Carissa Moore. She defended her title at the Drug Aware Pro in Australia to tie for a lead on the ASP World Tour ratings with Stephanie Gilmore. Coco Ho lost to Sally Fitzgibbons in round 4. Go Hawaii!

Do you have some water sports news, contact me at [banzaib@hawaii.rr.com](mailto:banzaib@hawaii.rr.com). Aloha Banzai Betty Media. Below rare Blue Coral in Kawela Bay.

★

**BANZAI PRODUCTIONS**

**Video - Media**

**Need Web Video**

**Ask About Our**

**Special Rates**

**808-781-2535**

★

## 3 Schools in 1 Day: Over 250 First Hawaiian Bank Volunteers To Assist With Repairs And Maintenance At Three Oahu Public Schools

Over 250 First Hawaiian Bank employees are scheduled to help three Oahu public schools with repair and maintenance projects on Saturday, March 29, 2014. The projects are part of the Hawaii 3R's program, which has been "marrying" repair and maintenance backlog projects at Hawaii's schools with community volunteers since 2001.

The combined total cost for the three-school project is estimated to be over \$200,000. The work being done by First Hawaiian Bank volunteers represents a substantial cost savings of about \$100,000 for the Hawaii State Department of Education. Projects by Hawaii 3R's have been completed at nearly every public school across the state, resulting in a "savings" to the state of over \$43 million over the past 13 years.

"First Hawaiian Bank employees have demonstrated their commitment to the community over the years through their charitable giving," said Bob Harrison, First Hawaiian Bank's president and CEO. "Every year, about 98 percent of all employees participate in our annual Kokua Mai employee giving campaign, raising over \$4.1 million for charities

since the program's inception in 2007. This year, we are expanding our charitable commitment by volunteering our time to projects like Hawaii 3R's. Our employees are excited to be making a positive impact through our new Community Care volunteer service program which connects First Hawaiian employees to our community even further."

The scheduled projects span Oahu from the North Shore to downtown Honolulu:

Bleachers at Waialua High School on Oahu's north shore were recently replaced and need to be painted. Bank volunteers will be painting the bleachers and the goal posts under the supervision of Jade Painting. Sixty bank volunteers will be at the campus from 8:00 a.m. to about 12:00 noon.

With nearly 125 bank volunteers, Kawanakoa Middle School will get a fresh coat of paint in heavily trafficked areas that are otherwise overlooked and not always included as part of scheduled maintenance projects. The campus work is scheduled to commence at 8:00 a.m.

If the **NOISE** and **CONCUSSIONS** from military artillery or drones have been a problem, please call these offices.

They are accepting information from the community.

**After you call, please log your concern with the Noise Concern Line at 656-3487.**

Senator Brian Schatz • 523-2061 • [www.schatz.senator.gov/contact](http://www.schatz.senator.gov/contact)

Senator Mazie Hirono • 522-8970 • [www.hirono.senate.gov/contact](http://www.hirono.senate.gov/contact)

Senator Donovan Dela Cruz • 586-6090 • [www.sendelacruz@capitol.hawaii.gov](mailto:www.sendelacruz@capitol.hawaii.gov)

Congresswoman Hanabusa • 541-2570 • [hanabusa.house.gov/contact-me/email-me](http://hanabusa.house.gov/contact-me/email-me)

Representative Marcus Oshiro • 586-6700 • [repmoshiro@capitol.hawaii.gov](mailto:repmoshiro@capitol.hawaii.gov)

Representative Richard Fale • 586-6380 • [repfale@capitol.hawaii.gov](mailto:repfale@capitol.hawaii.gov)

Representative Lauren Matsumoto • 586-9490 • [repcheape@capitol.hawaii.gov](mailto:repcheape@capitol.hawaii.gov)



# Aloha Patrol

By Ryan Lorne

## Keeping It Green On The North Shore

In honor of Earth Day the North Shore News would like to thank Danny Silva, JeffereyBolson, David Rodrigues, Gabby Kahaulelio and Marvin Fuentes the guys at the Kawaiiloa Transfer Station for providing us with their free of charge service for the past 27 years. I spoke to Danny Silva who has been working at the Kawaiiloa Transfer Station since April 1987. "The dump was originally built to accompany dump trucks servicing the North Shore, but was later decided to be opened to the public." Before Kawaiiloa being open to the public, residents would drive to Kahuku or Wahiawa for dump runs. Danny informed me that 90% of the waste that is collected is sent to the H-Power Plant in Campbell Industrial Park and is converted into electricity. Noncombustible construction and demolition (C&D) debris and industry waste go to landfill. The H-Power Plant produces 7% of Oahu's electricity, which is over 600 tons of waste annually.

Here is a list of rules and information you need to know before loading up your truck.

- Prohibited Materials: anything 4 feet long, large automobile parts, commercial refuse, compressed gas cylinders and tanks.
- Corrosive Materials: cleaners, antifreeze, solvents, etc.
- Demolition Materials: asphalt, concrete, dirt, rock, sand, etc.
- Explosives/Ammunition

- Farm and Agricultural Waste
- Lead and Aid Batteries
- Toxic Materials
- All Liquids: you ca purchase a liquid absorbent box and put your liquids inside or use some kind of absorbent powder like kitty litter and place it in a plastic bag
- No Flatbeds
- No Commercial Rubbish. One of the biggest problems is public awareness, if you have any questions



don't hesitate to ask any of the workers.

When going to the dump always remember the garbage trucks have first priority even if you are waiting in line, the garbage trucks go first. The best time to go is after 11 a.m.

Don't let your trash end up on the streets! Turnit into electricity, 1 ton of trash is turned into equivalent of 60 gallons of oil. Help Hawaii become less dependent on imported oil.

*Kawaiiloa Transfer Station, 62-180 Kawaiiloa Drive, Haleiwa, 637-5511*

*Hours of Operation: 7 a.m. – 6 p.m. everyday of the year except for Christmas and New Years Day.*

No job too big or small.  
Located at the Waiialua Sugar Mill.

**CERTIFIED WELDING  
FABRICATION & REPAIRS  
OF ALL METALS**

**628.8719**

**J.B. TILE &  
CARPET**

**JOHN BURTCH**  
Free estimates  
25 years experience  
(808) 226-1023

# NORTH SHORE CHAMBER OF COMMERCE NORTH SHORE EXPERIENCE: *Learn, Grow, Prosper*



6TH ANNUAL BUSINESS EXPO PRESENTED BY WAIMEA VALLEY  
Friday, May 2, 2014 • 8:00am - 6:30pm • Pikake Pavilion, Waimea Valley



## ATTENDEE & EXHIBITOR REGISTRATION

**Register by April 11 for the Early Bird Discount!**

### Attendees

Includes continental breakfast, sandwich buffet, Pau Hana Reception, all day program

	By April 11	April 12 - 25
North Shore Chamber of Commerce Members	<input type="checkbox"/> \$60	<input type="checkbox"/> \$80
Non-Members	<input type="checkbox"/> \$75	<input type="checkbox"/> \$95

### Exhibitors

Includes booth space (1 booth sign, 1 6' table, 2 chairs) plus 2 exhibitor registrations

Exhibitor Name (For Booth Sign) \_\_\_\_\_

Exhibitor Registration Name 1 (For Badge) \_\_\_\_\_

Exhibitor Registration Name 2 (For Badge) \_\_\_\_\_

	By April 11	April 12 - 25
North Shore Chamber of Commerce Members	<input type="checkbox"/> \$250	<input type="checkbox"/> \$300
Non-Members	<input type="checkbox"/> \$300	<input type="checkbox"/> \$350
Non-Members <b>Plus Membership *</b>	<input type="checkbox"/> \$385	<input type="checkbox"/> \$435
<b>Optional</b> (1) Additional Exhibitor Registration		<input type="checkbox"/> \$50

**\* \$40 discount on North Shore Chamber of Commerce membership for joining today!** Membership benefits include networking opportunities; free North Shore Chamber of Commerce Website listing with link to your Website; rackcard display at Visitor Center; discounts on events, meetings, workshops; historic preservation; and more

**Total \$** \_\_\_\_\_

### Registration Information

First Name \_\_\_\_\_ Last Name \_\_\_\_\_

Attendee Name (For Badge) *If Exhibitor, enter name for badge at left under Exhibitors* \_\_\_\_\_

Title \_\_\_\_\_

Organization (No Acronyms Please) \_\_\_\_\_

Street Address \_\_\_\_\_

City \_\_\_\_\_ State \_\_\_\_\_ Zip \_\_\_\_\_

Phone \_\_\_\_\_ Fax \_\_\_\_\_

Email \_\_\_\_\_

Emergency Contact Name \_\_\_\_\_ Emergency Contact Phone \_\_\_\_\_

### Payment Information

Check Enclosed: Payable to NORTH SHORE CHAMBER OF COMMERCE

Credit Card: Please charge my  Visa  Mastercard

Name on Credit Card \_\_\_\_\_

Credit Card # \_\_\_\_\_ Expiration Date \_\_\_\_\_

Signature \_\_\_\_\_

Please complete all information and mail or fax registration form plus payment to the North Shore Chamber of Commerce. You may also call to register by phone. Please have all registration information and payment method ready when calling.

NORTH SHORE CHAMBER OF COMMERCE • [GONORTHSHORE.ORG](http://GONORTHSHORE.ORG)  
66-434 B KAMEHAMEHA HIGHWAY • HALEIWA, HI 96712 • PHONE: (808) 637-4558 • FAX: (808) 637-4556 • EMAIL: [info@gonorthshore.org](mailto:info@gonorthshore.org)

# WAIALUA FARMERS' CO-OP MARKET

WAIALUA SUGAR MILL GROUNDS  
SATURDAYS  
8:30 A.M. – 1:00 P.M

## BUY DIRECTLY FROM FARMERS

- KAHUKU FARMS
- FIELDS OF ALOHA
- TWIN BRIDGE FARMS
- DEL TROPICAL FLOWERS
- WAIALUA FRESH PRODUCE
- T & L PALMS AND FLOWERS
- WAIALUA COOPERATIVE FARMERS

FOOD VENDORS  
STEAKOUT

NORTH SHORE GOODIES  
SOMETHING SPECIAL BISCUITS & CAKES  
AND MORE

\*\*\*\*\*

A MARKET MANAGED BY FARMERS  
EDITH: 637-8589

# MAHALO!

from the

## North Shore Food Bank

The North Shore Food Bank distributed 6500 plus food bags in 2013! Thank you for all your support and donations, you are appreciated.

The North Shore Food Bank distributes food bags every Wednesday at the Hale'iwa gym from 9 a.m.–12 p.m.

Donations of non-perishable canned foods can be dropped off at the North Shore News office (above the Hale'iwa Post Office).

If you would like to contribute financially checks can be made out to:

Once A Month Church  
P.O. Box 117  
Haleiwa, HI 96712

For more information call 637-3138

Sponsored by North Shore News & Once A Month Church  
501c3 non-profit



39 Pupukea Seniors arriving back at He'eia Pier after a wonderful tour of Coconut Island!

# BULLETIN BOARD



Specializing in vegetarian foods, vegan foods, whole foods, organic food. Wheat free, dairy free, raw foods, gluten free. A complete selection of natural foods for 39 years. Make earth day, everyday. Open 7 days. Mon.-Sat. 9am-7pm. Sun. 9am-5pm

66-445 Kam. Hwy  
Haleiwa, Hawaii 96712  
Next to the Post Office  
808-637-6729 • 808-637-1922 fax



**DR. PORTER TURNBULL**  
Chiropractic Orthopedist  
(808) 638-8740  
Appointments available Mon.-Sat.  
(evenings by appointment)

- Industrial accidents & auto injuries
- Sports injuries • Spinal care
- Safe, Effective, and Gentle

## N-C PLUMBING & SUPPLY

Cont. Lic. No. C-8913



- RESIDENTIAL & COMMERCIAL SALES & SERVICE
- CONTRACTING & DESIGN • HOME PLUMBING SERVICE
- PLUMBING FIXTURES, HEATERS • FREE ESTIMATES

Nestor P. Calilao (Owner) Bus: 637-8662  
P.O. Box 769 Res: 638-5157  
Waialua, HI 96791 Cellular: 372-8718  
email: nncplumbing@hawaii.rr.com

**NORTH SHORE LAWN SERVICES**  
No job too big or too small we do it ALL

**OLE SEYLER**  
Free estimate

Mowing, Weed Whacking, Hedge Trimming, Small Trees, Full Clean Up

59-720 Pupukea Plc.  
(808)375-7178  
olafseyler@gmail.com

**North Shore Surf Girls**  
Surf Lessons and Tours  
Call: 808.637.2977

LIC. #AC 18275

## COWPER CONSTRUCTION

GENERAL ENGINEERING CONTRACTOR

Full Service Sitework Contractor  
Septic Systems & Tanks  
25 yr. exp.

Michael Cowper 638-7200  
cowperhawaii.com

## Munden Design & Build

Lic.#BC19632

Design • Plans • Permits • Construction  
Additions & New Residences  
**808 391-8616**

Providing quality work since 1978



License No. C28113

Commercial • Residential  
Septic • Solar • Design

**Mike 630-1407**  
Steve@offshoreplumbinginc.com



## Ernie Doak Plumbing, Inc.

Quality without Compromise

NEW CONSTRUCTION • RENOVATION • SOLAR  
Serving Oahu's North Shore for over 20 years

**ERNIE DOAK** cell 295-7943  
Lic. #CT-22113 office 638-8620  
Lic. #PJ-10630 erniedoakplumbing@yahoo.com

## ILAN FREITAS

c 808 372-8848  
a any part of the island  
e greenwaveslandscaping@yahoo.com



yard maintenance  
grass planting  
sprinkler system installation & repair  
landscaping design & renovation  
dirt removal  
commercial & residential  
no jobs are to big or too small



Summer Programs offered by the Department of Parks and Recreation

The Department of Parks and Recreation is offering a variety of classes at a park near you. At the Haleiwa Surf Center the program consist of Ocean Awareness and Ocean Fun classes. At Sunset Beach Recreation Center, arts and craft as well as fitness classes will be offered while at Waiialua District Park, arts and craft and sports classes will be offered.

In addition, Summer Fun programs will be conducted at Sunset Beach Neighborhood Park and Waiialua District Park. Each site will conduct recreation programs on a daily basis from 8:30am – 2:00pm, except on holidays. The program dates are June 12 – July 25, 2014. Summer Fun registration is \$25.00 per child ages 5 – 13 (Kindergarten – 6<sup>th</sup> grade). Activity fees vary for each site.

Each area is also looking for adult and teen volunteers. All volunteers must be able to commit during the program dates and program hours. All adult volunteers will be required to clear background check; attend all mandatory training; and be able to volunteer a minimum of 10 hours a week. All teen volunteers must be able to attend all training dates and be available during summer fun hours.

Online registration will be available for non-fee classes only. An adult must go online at [www.honolulu.parks.com](http://www.honolulu.parks.com) to set up an account prior to the online registration date. You will also be able to view all the classes for each park.

Online registration for non fee classes: April 21, 2014 (8:30am) to April 30, 2014.

Walk-in registration will take place at the respective parks for their programs.

Walk-in registration dates: Saturday, May 17, 2014 9:00am – 12:00pm  
 Monday, May 19, 2014 2:00pm – 5:00pm  
 Tuesday, May 20, 2014 2:00pm – 5:00pm

Please contact the following people for information at their respective parks:

- Mr. Asa Chun at 637-5051 for program information at Haleiwa Surf Center
- Mrs. Verta Betancourt at 638-7213 for program information at Sunset Beach Recreation Center and Sunset Beach Neighborhood Park
- Mr. Robert Roibal at 637-9721 for information at Waiialua District Park

# North Shore News



# 2014 Schedule

PUBLICATION DATE	EDITION	DEADLINE DATE
April 30	#9	April 17
May 14	#10	May 1
May 28	#11	May 15
June 11	#12	May 29
June 25	#13	June 12
July 9	#14	June 26
July 23	#15	July 10
August 6	#16	July 24
August 20	#17	August 7
September 3	#18	August 21
September 17	#19	September 4
October 1	#20	September 18
October 15	#21	October 2
October 29	#22	October 16
November 12	#23	October 30
November 26	#24	November 13
December 10	#25	November 27

**Direct-Mailed to Every Home**  
**MOKULEIA • WAIALUA • HALE'IWA • KAHUKU • LAIE**  
**Every Other Wednesday**  
**12,000 copies**

"The North Shore's most popular publication" since 1970  
 (808) 637-3138 • NShoreNews@aol.com • NSN4Linda@aol.com  
[www.northshorenews.com](http://www.northshorenews.com)



# North Shore News 2014 Special Editions

Publication Date	Edition	Deadline Date
April 30	Mother's Day	April 17
May 14	Health & Wellness	May 1
June 11	Pets & NS Animals	May 29
July 9	Home Improvement	June 26



The North Shore News is published every other Wednesday and mailed free of charge to all North Shore homes and businesses. Extra copies may be obtained at our office.

**PRESS RELEASE POLICY:** Submit press releases in person or by fax, mail or email to Editor, North Shore News, 66-437 Kam. Hwy., Suite 210, Haleiwa, HI 96712. Please type your releases and keep them shorter than 200 words unless they are of an unusual news interest. Releases should be viable news stories and are published on a **space available basis only**, with priority given to those received in our office first. You may attach photos. We are not responsible for the return of any photos. All materials are submitted at owner's risk. We reserve the right to edit and/or refuse all submissions including advertising.

**EDITORIAL POLICY:** We welcome articles and letters from our readers. Letters to the Editor are published on a space available basis only and preference is given to shortness of length, and quality of content. We prefer to run not more than one letter, per person, per 6 month period. Letters subject to edit.

Views expressed by our contributing writers and advertisers do not necessarily reflect the view of the management and staff of the North Shore News. All rights reserved. Reproduction in whole or part without permission is prohibited. © 2014.

#### Editor & Classifieds

Linda Seyler

#### Typography

Downtown General Store

#### Contributing Writers

Betty Depolito  
Naty Hopewell  
Choon James  
Ryan Lorne

City Councilman Ernie Martin  
State Representative Lauren Matsumoto  
State Representative Richard Lee Fale

#### Photography

Banzai Productions  
Ole Seyler



Please recycle this newspaper.

# CLASSIFIEDS

## SERVICES

**SHORE ELECTRICAL SERVICE**  
New Const-Remodels  
638-0049 / Lic#C20777

**PARADISE PLUMBING INC.**  
New Const • Repairs • Remodels  
808-368-1473 / Lic. 29856

**Lawn Care For You**  
Mowing, Trimming, Light Hedging  
Call Thomas 637-5839

**Handyman Services**  
Remodeling, Carpentry, Floors,  
Concrete, all parts of Construction  
Call Bob "The nicest guy in the  
business" Ph. 282-2812

**Greekz Plumbing LLC**  
Complete Service & Repair  
Camera inspection/drain cleaning  
"Got a leak? Call Steve the Greek"  
808-372-1820 Lic#32939

**North Shore Pumping**  
Septic and Cesspool Service  
Clifford 638-0900 • 291-5099

**Computer Problems?**  
I can fix any MAC or PC.  
Chris 371-3089

**Traveling Professional  
Housekeeper**  
Dorothea M. Smith  
808-258-6555

**Carpentry & Painting Services**  
Repairs/Remodeling, Termite Rot  
Doors, Cabinets, Countertops, etc.  
Reasonable Rates 271-6584

**Construction Services**  
Single wall, windows  
New & remodels  
Free Estimates  
260-7386

**Phil's Yard Service**  
and home care  
888-4921

**Paumalu Electric Inc.**  
C 18074

Residential & Commercial  
New Installation & Repairs  
Renovations. Remodels  
Electric Meter Replacements  
Complete Install for Solar PV  
Dave Hancock 638-9054

**BOW WOW BUNGALOWS**  
Licensed Boarding Kennel  
North Shore, Oahu  
Reasonable Rates  
Ph. 637-2562  
*These Dogs Have Fun!*

**HARVEY'S REPAIR, LLC**  
24 hrs Towing Service  
Specializing in opening  
locked car doors  
Call any time 478-0333

**N.S. Property Maintenance**  
Complete building & grounds  
maintenance, painting int/ext,  
demolding & power washing  
specialist, carpentry,  
fences & decks  
Chris 381-5213/638-0659

**Malia's  
North Shore Massage**  
14 years experience  
Women by appointment  
Men by referral  
**(808) 375-3879**  
maliasnorthshore.massagetherapy.com

**Golden Rule  
Lawn Care**  
Mowing, weed whacking,  
hedge trimming, rake up,  
light weeding & haul away.  
Call Matt 269-5020

**BIKRAM YOGA**  
**\*\*\$10 CLASSES\*\***  
3 p.m. Saturday &  
Sunday  
Please call for class schedule  
**637-5700**

**Your Clean Home  
Vacation/Residential  
Home Cleaning**  
Affordable • Reliable  
• Green Cleaning  
For Free Estimate  
Call 638-0262 or 782-9941

**BOBBY'S BODIES**  
Tuesday evenings at 5:00 p.m.  
• Body Toning  
Friday mornings at 9:00 a.m.  
• Cardio Pump/Fat Burner  
For more info: call Bobby, owner of  
BOBBY'S BODIES at 637-4150

**Aloha Computer**  
PC Repair/Virus Removal  
Fax/Copy/Internet Access  
372-2667 or 237-4558

**SHIATSU • LOMI**  
Aromatherapy  
Milica Barjaktarovic  
Lic # MAT8348  
351-0848  
HumanRemodeling.com

**DILLON SIGN**  
& Residential Painting  
Haleiwa - 20 yrs exp.  
499-9582

**Waynebow**  
Window Washing  
Residential • Commercial  
New Construction • Free  
estimates  
223-4034

**Mother's Day Issue**  
**April 30, 2014**  
**Deadline Date: April 17, 2014**

## HOW TO CONTACT THE NORTH SHORE NEWS

Letters to the Editor, and other items submitted for publication consideration may be sent to us via:

MAIL: 66-437 Kamehameha Hwy., Suite 210, Hale'iwa, HI 96712

E-MAIL: NShoreNews@aol.com

PHONE: (808) 637-3138

Office Hours: Monday-Friday 1 p.m.-5 p.m.

www.northshorenews.com

# CLASSIFIED ADS

**GERMAN CAR SERVICE**  
 Professional-Qualified  
 Technician  
 Call Gary  
 637-6800

**PIANO LESSONS**  
 Guitar, Ukulele, Bass,  
 Songwriting  
 637-4635

**Retail Sales  
 Surf & Sea**  
 Hawaii's Ocean Sports Headquarters  
 is always looking for hard working,  
 energetic people to become a part  
 of our sales team. Good pay, bonus,  
 benefits. Ocean sports experience  
 and/or bilingual a plus. Apply in  
 person daily 9am-7pm  
 62-595 Kam. Hwy., Haleiwa

Save the Sea Turtles Int'l and Adopt a  
 Beach and Highway Hawaii  
**BEACH CLEAN UP**  
**Last Saturday of every month**  
 10 a.m. • 61-529 Kamehameha  
 Hwy., Haleiwa, HI 96712  
 For more information 808-637-2211  
 Check out our website at:  
 http://adoptabeachhawaii.com

**NORTH SHORE  
 AUTO DETAILING**  
 Services  
 Wash, wax, vacuum, water spot removal,  
 paint sealant, light buffing  
 We also pressure wash sidewalks  
 driveways and more  
**For more info**  
 Call Billy (808)371-0854  
 Prices may change upon inspection  
 of vehicles condition and size  
**We are mobile we come to you**

**LEARN TO SWIM**  
 AT THE  
**HAWAII SWIM  
 SCHOOL**  
 ON THE NORTH SHORE  
 Developing swimmers since 1982  
 Haleiwa Rd. at Smiley Place  
 637-4863

**LOST**  
 Lost Persian Cat "Sassy" on Satur-  
 urday, April 5, 2014 at 66-900  
 Wanini Street/Kamakahala Street.  
 White Persian Cat wearing a pink  
 harness around her chest. If found  
 or any info please call 277-8410.

**Keep it Country**  
 To report ILLEGAL VACATION  
 RENTALS  
 call 768-8159 or 768-8118  
 You will remain anonymous  
**Illegal Vacation Rentals  
 are ruining the North Shore**  
 www.savenorthshoreneighborhoods.com

  
**Business Services Center**  
 Fast & convenient fax, copy,  
 scan, computer/internet,  
 laminate, etc.  
 Across from Haleiwa post office.  
 637-4558 or GoNorthShore.org

**ANGELS  
 PLUMBING**  
 Repairs  
 Remodeling  
 Renovation  
**638-7878**  
 Lic. #C12004

**FLOWERS**  
 The Plumeria Farms will soon  
 open again for pickers on Satur-  
 days. Calls will only be taken on  
 Thurs./Fri. between 7-8 a.m. for  
 pricing and details. 232-9044

**Please Report Stranded  
 Sea Turtles**  
 Call 983-5730 • Mon.-Fri., 7am-4pm  
 288-5685 pager wkends, holidays  
 587-0077 and after hours  
 Suspected Law Violations  
 541-2727 or 800-853-1964  
 NOAA Fisheries DLNR-DOCARE

**Individual & Family Therapy**  
 • Grief & Loss • Habits & Addiction  
 • Life Challenges & Transitions  
 • Clinical Supervision  
 Curielle Duffy, MA, MSW, LCSW, CSAC  
 808.633.3437 www.liferecovery.pro

**HELP WANTED**  
**BUSSERS/SERVERS**  
 Pizza Bob's in Haleiwa is looking  
 for BUSSERS/SERVERS. Experi-  
 ence preferred. Apply in person  
 at 66-145 Kam. Hwy.

**MISCELLANEOUS**  
 Lost gold bracelet on Friday March  
 7 at Malama Market, on top of  
 the lettuce. At the time I didn't  
 realize that the bracelet had fallen  
 off my wrist. This was my mother's  
 bracelet that she had just given me  
 to remember her by. If you have  
 a heart please call me at 5427425  
 I will be eternally grateful. God  
 Bless you.

**New Hope Haleiwa**  
 "Anchored to God's word,  
 led by his spirit" @Haleiwa  
 Elementary School  
 9:00am Service  
 621-9363

**PILATES**  
 with Linda Yadao  
 Private Equipment Classes only  
 over 35 years of experience  
 call  
**808 637 1230**  
 lindayadao@gmail.com

**COOKS/KITCHEN HELP**  
 Pizza Bob's in Haleiwa is looking  
 for kitchen personnel. Experi-  
 ence preferred, but will consider  
 training the right people. Apply  
 in person at 66-145 Kam. Hwy.

**OFF da ISLAND**  
 Are you leaving Oahu on vaca-  
 tion or business? Do you live on a  
 neighbor island, the mainland or  
 foreign country and subscribe to  
 the North Shore News? Try send  
 us a photo of someone in front  
 of a sign or landmark holding a  
 copy of the NSN. Email your photo  
 along with the person or persons'  
 name, community of residence,  
 telephone number and photo lo-  
 cation to: NShoreNews@aol.com.

**Voice of God  
 Ministries**  
 Jesus Loves You  
 If you need Prayer  
 Call 808-373-0294

**Classified Ad Rates**  
 3 lines (min.) \$18.89  
 4 lines \$25.13  
 5 lines \$32.45  
 1" Box Ad \$41.88  
 (27 characters in each line)  
 Include your contact information.  
 \*Ads can be dropped off in mail slot,  
 mailed, or emailed. Pay by check pay-  
 able to: North Shore News or credit  
 card by phone order.  
 We reserve the right to refuse any  
 advertisement with a full refund.  
 North Shore News • 66-437 Kam. Hwy.,  
 Suite 210, Haleiwa, HI 96712  
 • (808) 637-3138 • NShoreNews@aol.com

  
**Marianne  
 Abrigo, Properties**  
 Specializing in -  
 North Shore  
 Real Estate  
 Ask for our list of avail-  
 able properties and/or a  
 free market analysis.  
**Marianne M. Abrigo**  
 "Realtor since 1974"  
 Office 637-3511  
 Fax 637-0777  
 Email mabrigo222@aol.com

**Summer Employment Opportunity**  
 Summer is upon us and the Depart-  
 ment of Parks and Recreation is seeking  
 a few good college men and women to  
 be Student Aide adult leaders for the  
 summer fun programs at Sunset Beach  
 Neighborhood Park and Waiialua District  
 Park. The contract dates are May 29, 2014  
 to July 29, 2014. First Aid certification is  
 required. Any interested college student  
 will need to submit an online application  
 on the city website: www.honolulu.parks.  
 com. For more information, call Verta  
 Betancourt at Sunset Beach Recreation  
 Center at 638-7213 or call Robert Roibal  
 at Waiialua District Park 637-9721.  
 In addition, we are looking for certi-  
 fied lifeguards to be lifeguards at Waiialua  
 Swimming Pool and at Haleiwa Surf  
 Center. Current Lifeguard/1st Aid/CPR/  
 AED certification is required. Contract  
 dates are May 29, 2014 to August 2,  
 2014. Contact Asa Chun at Haleiwa  
 Surf Center at 637-5051. Contact Laura  
 Whittaker at 637-4106 for information  
 on the life guarding positions at Waiialua  
 Swimming Pool.

**FREE ADS**  
 Garage & Yard Sales,  
 Reunions, Lost & Found.  
 Email ad to:  
 NShoreNews@aol.com

Live Green & Come Celebrate  
 Earth Day with a 10% discount  
 at the  
**GREEN GYPSY THRIFT SHOP**  
 Next to Paalaa Kai Bakery in Waiialua  
 808-366-4000

**Next Issue - April 30, 2014**  
**Deadline Date-April 17, 2014**

**For Advertising Rates**  
 Call 637-3138  
 or go to  
 www.northshorenews.com

**Malama Market Haleiwa:**  
Open Daily 7 a.m.–9 p.m.  
(808) 637-4520

**Malama Market Makakilo:**  
Open Daily 6 a.m.–10 p.m.  
(808) 672-9955



Valid Dates:  
**4/16/14–4/22/14**

## Deals of the Week!

**Navel Orange**

**\$1.19**  
LB.



**Fresh Ground Beef**

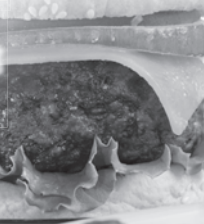
80% Lean, Jumbo Pack,  
5 lbs. or More

**\$3.79**  
LB.

Cook 160°  
**LARGE SIZE**

**or Fresh Ground Pork**

Value Pack,  
3 lbs. or More



**Dasani Water**

24/500 ml.

**\$3.99**



**Minute Maid Orange Juice**  
Selected Varieties,  
59 oz.

**\$3.99**



**Crystal Farms Cheese**

Singles, Shredded, or Chunk,  
Selected Varieties, 6–12 oz.

**2/\$5**



**Tostitos Tortilla Chips**  
Selected Varieties,  
9–13 oz.

**\$2.89**



**Blue Bunny Ice Cream**  
Selected Varieties,  
56 oz.

**\$4.99**



**Hinode Calrose Rice**  
White or Brown,  
20 lbs.

**\$13.49**



**Easter Chocolate Chip Cookie**  
9"

**\$5.19**  
EA.



**15 Piece Fried Chicken Thighs**  
Original, Korean,  
or Furikake

**\$16.99**  
EA.



**Heineken, Corona, Stella Artois, or Redd's Apple Ale**  
12 Pk. Bottles or Cans

**\$13.99**

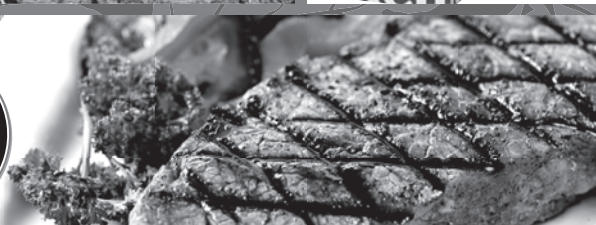


### Thursday

## Grilled Steak Lunch

7–8 oz. Steak, Rice, Tossed Salad, Drink

**\$7.99**



**Hawaii Beverage Fee** Hawaii Beverage Fee of 1.5¢ per can or bottle will be added to purchase price at checkout. An additional Hawaii Deposit Fee of 5¢ will be charged for all specially marked beverage containers.

Limit five units (mix/match) per purchase, unless otherwise specified. We reserve the right to limit quantities. No sales to dealers. Prices plus applicable state tax. Hawaii EBT cards welcomed.