



"E Ala Na Moku Kai Liloloa"

INSIDE
Our Annual
**North Shore
Restaurant Guide**



Great tasting places
Waiialua • Haleiwa • Sunset Beach • Kahuku • Laie

NORTH SHORE NEWS March 9, 2011 VOLUME 28, NUMBER 5



Photo: R. Cartwright - NMFS Permit # 895-1450

Volunteers Count Whales in NOAA's Hawaiian Islands Humpback Whale National Marine Sanctuary

Over 800 volunteers gathered from the shores of Oahu, Kauai, and the Big Island for annual Hawaiian Islands Humpback Whale National Marine Sanctuary Ocean Count on Saturday, February 26, 2011. Participants tallied humpback whale sightings and

documented the animals' surface behavior during the survey. The sanctuary, which is managed by NOAA, protects humpback whales and their habitats in Hawaiian waters where they migrate each winter to mate, calve, and nurse their young.

"Volunteers around the state reported perfect viewing conditions for the second count of 2011," said Claire Kavanaugh, sanctuary ocean count project coordinator. "On such a beautiful day, volunteers also noticed many boats on the water, which serves as a great reminder for mariners and other ocean users to be mindful of whales while out on the water during whale season (November to May). In Hawaii, it is illegal to approach a humpback whale closer than 100 yards by sea and 1,000 feet by air."

<p>PRE-SORTED STANDARD U.S. POSTAGE PAID Honolulu, Hawaii Permit No. 1479</p>	<p>66-437 Kamehameha Hwy., Suite 210 Haleiwa, HI 96712</p>
---	--



OFF da Island on the Pakistan "Silk Route"

Thor Thorbro is seen here on his latest International Federation Red Cross mission in Northern Pakistan. He was deployed on a field trip along KKH Highway (otherwise called the "Silk Route" from the days of Alexander the Great) running between the capital of Pakistan Islamabad via the foothills of the Himalayas to the Chinese border. His mission included disaster relief for the July 2010 Pakistan flood disaster. He is presently residing with family in Pupukea contemplating his retirement. Wherever disaster he always includes packing a recent edition of the NSN to remind him of the good times back on Oahu's beautiful North Shore. For more info on our OFF da Island photo campaign turn to page 19.

Liberty Tax salutes police officers and firefighters with free tax preparation

Your Hale'iwa Liberty Tax Service offers free tax preparation from March 7-13 to salute firefighters and law enforcement officers. These tax breaks on preparation fees will be in effect from March 7-13 for those who are first-time customers. For more information, call 637-2222, or stop by our Liberty Service Center located on Kamehameha HWY, next to Tesoro and the Roundabout and our friendly Liberty waver!

"This week we'll honor the courage and dedication of our men and women in law enforcement and public safety to show appreciation for their work to keep this community safe," said Melissa Fritz, Haleiwa Office Supervisor and Lead Preparer.

About Liberty Tax Service

Liberty Tax Service is the fastest growing retail tax preparation company in the industry's history. Founded in 1997 by CEO John T. Hewitt, a pioneer in the tax industry, Liberty Tax Service has prepared over 8,000,000 individual income tax returns. With 41 years of tax industry experience, Hewitt stands as the most experienced CEO in the tax preparation business, having also founded Jackson Hewitt Tax Service (NYSE:JTX).

Liberty Tax Service provides computerized income tax preparation, electronic filing, refund loans, and online filing through eSmart Tax. Each office offers customers audit assistance, a money back guarantee, and free tax return checking.

66-580 Kamehameha Hwy, Suite 3
Next to Tesoro and the Roundabout
Haleiwa Hawaii 96712
637-2222

Liberty provides friendly, accurate tax preparation services with a money back guarantee!

www.libertytax.com | 866-871-1040



COOL AIR HAWAI'I & KINO PRESENTS THE "2nd Annual Da Hui Waimea Bay Shorebreak Slam" happening on either March 19th & 20th and/or 25th & 27th, 2010 (no 26th due to holiday, weekends only and surf permitting).

This amateur bodysurfing event is the only bodysurfing contest at the infamous Waimea Bay Shorebreak. While most North Shore bodysurfing contests are held at the challenging Pipeline, Waimea Shorebreak offers the less experienced & experienced bodysurfer to enjoy the sport with a nice sandbar and no-reef bottom. The "Kanaka Style Rubbah-Slip-pah Handboard Division" will continue again this year. This special division means that competitors must use a rubber slipper on their hand in order to compete. No traditional/company/man-made handboards will be allowed. This division will add some "local flavor" to the event and make it hilarious to watch. Using slippers to catch a wave can be done as kids have done it when your typical handboard wasn't affordable.

Waimea Bay Shorebreak does pack-a-punch and is nothing to take for granted. So surf heights for this event will be held in surf less than four (4) feet, Hawaiian scale. This will allow competitors both young and old to obtain the ultimate wave riding experience and anticipate a good competitor turnout from those who would like to test their wave-riding skills. Our 2010 event attracted over 90+ competitors making it the largest bodysurfing event on the North

Shore! The youngest competitor was 9 years old and the most 'seasoned' competitor was in his late 60's.

Bodysurfing is considered the purest form of wave riding. Using only a pair of fins, riders experience the most natural feeling than any other water sport, as it's just the individual and the ocean. Bodysurfing (Kaha Nalu or He'e Umauma) is also an ancient Hawaiian sport. With all the Hawaiian history and legends of our ancestors from Waimea Bay to the depths of the beautiful Waimea Valley forms a fond remembrance and celebration of who we are and where we came from.

The Hui O He'e Nalu (a.k.a Da Hui) is a non-profit native Hawaiian surf group with over 30 years of existence is also well known on the North Shore for its community service and credits to promoting ocean awareness. We aim to add this event to the list of our acknowledgments, as we are the first native Hawaiian organization to host a bodysurfing event on the North Shore of O'ahu.

Entry forms/waivers can be downloaded on dahui.com. Should you need further information or have questions, please call Mahina Chillingworth at (808) 368-7749 or via email at mahina@dahui.com.

The Hale'iwa Family Dental Center, Ltd.



presents
"Comfort Dentistry"
 including—

- Relaxation Glasses
- Television Glasses
- Caring Staff
- Special Medication to help you relax
- Laser Cavity Detection
- New Patients Welcome!

Your teeth are much too important to neglect.

Call: 637-9652
 for your reservation

We're conveniently located behind First Hawaiian Bank
 in the heart of Hale'iwa.

Saccoccio & Lopez

ATTORNEYS AT LAW
 Serving Hale'iwa since 1984

Bankruptcy
Personal Injury • Criminal Law
Landlord/Tenant
Traffic Offenses • DUI

Family Law
Adoption • Custody • Divorce
Paternity • Guardianship
Deeds, and Wills

637-7611

VISA/MC Accepted
 Above the Hale'iwa Post Office



Paul & Nita

Quality Tile Crafts

"No job too big or small!"

Specializing in Ceramic Tile,
 Travertine, Marble, & Slate

Kevin Wilson

cell (808) 864-4985 office (808) 638-8492
 www.QualityTileCrafts.com Free Est.

Editor's Choice

"The Most Caring Child"

Author and lecturer Leo Buscaglia once talked about a contest he was asked to judge. The purpose of the contest was to find the most caring child.

The winners were:

A four-year-old child, whose next door neighbor was an elderly gentleman, who had recently lost his wife. Upon seeing the man cry, the little boy went into the old gentleman's yard, climbed onto his lap, and just sat there. When his mother asked him what he had said to the neighbor, the little boy just said, 'Nothing, I just helped him cry.'

On my way home one day, I stopped to watch a Little League baseball game that was being played in a park near my home. As I sat down behind the bench on the first-base line, I asked one of the boys what the score was, 'We're behind 14 to nothing,' he answered with a smile. 'Really,' I said... 'I have to say you don't look very discouraged.'

'Discouraged?', the boy asked with a puzzled look on his face... 'Why should we be discouraged? We haven't been up to bat yet.'

An eye witness account from New York City, on a cold day in December, some years ago: A little boy, about 10-years-old, was standing before a shoe store on the roadway, barefooted, peering through the window, and shivering with cold.

A lady approached the young boy and said, 'My, but you're in such deep thought staring in that window!'

'I was asking God to give me a pair of shoes,' was the boy's reply.

The lady took him by the hand, went into the store, and asked the clerk to get half a dozen pairs of socks for the boy. She then asked if he could give her a basin of water and a towel. He quickly brought them to her.

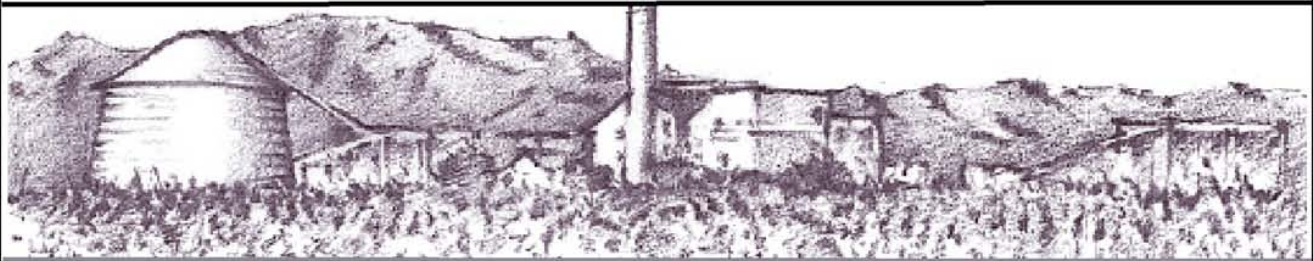
She took the little fellow to the back part of the store and, removing her gloves, knelt down, washed his little feet, and dried them with the towel.

By this time, the clerk had returned with the socks. Placing a pair upon the boy's feet, she purchased him a pair of shoes. She tied up the remaining pairs of socks and gave them to him.. She patted him on the head and said, 'No doubt, you will be more comfortable now.'

As she turned to go, the astonished kid caught her by the hand, and looking up into her face, with tears in his eyes, asked her.

'Are you God's wife?'

WAIALUA FEDERAL CREDIT UNION



4.50% APR
NEW AUTO LOANS
 Up to 100% Sales Contract
 New Previously Untitled
 Maximum Terms 6 years
 7 Years on Loans
 over \$25,000

3.75% APR
 until March 10, 2011
HOME EQUITY LINES OF CREDIT
 Owner Occupant
Maximum Line: \$150,000
 Variable adjusted annually on March 10
 (3.5% above the average 26 week Treasury Bill rate)
 Call for more information

67-292 Goodale Ave. Waiialua, HI 96791 808-637-5980



wanna learn?
NORTH SHORE
JIU-JITSU CLUB
try it out free!
men-women-kids
NorthShoreBJJ@GMail.com



Glennel Warren MBA, CRPS®
P 808.218.2633



Elsa Agdinaooy CRPS®
P 808.927.2094

- Wealth Management
- Business Succession Plans
- Educational Plans
- Life Insurance
- Long Term Care Insurance
- Disability Insurance



677 Ala Moana Blvd, Suite 705, Honolulu, HI 96813 | 808.695.2123 office
866.252.7270 toll free | 808.695.2121 fax

Registered Representative of Park Avenue Securities LLC (PAS) 7 Hanover Square, New York, NY, 10004. Securities products and services are offered through PAS, a registered investment advisor and broker/dealer. Financial Representative, The Guardian Life Insurance Company of America (Guardian), New York, NY. PAS is an indirect wholly owned subsidiary of Guardian. Wealth Strategy Partners is not an affiliate or subsidiary of PAS or Guardian. The Living Balance Sheet® and the Living Balance Sheet® Logo are registered service marks of The Guardian Life Insurance Company of America (Guardian), New York, NY.

FREE TOWING
 unwanted vehicles
 "It's time to move it on out"
808-636-7183
 We also offer islandwide towing
 and roadside assistance
North Side Towing
 *Blocked calls will not be answered.



**Direct From
Donovan**
State Senator
Donovan Dela Cruz

We are at the halfway point of our legislative session and there a number of bills making their way through the Senate that we hope will define this current session as one that will have accomplished much for the people of our state. Two of the measures I introduced will have impacts on our district.

Senate Bill 247: This bill creates a program established by the Department of Agriculture which will award grants to agricultural producers who implement natural farming methods such as the Cho global natural farming method. This bill will provide the appropriation necessary to operate such a program.

Han Kyu Cho of the Republic of Korea developed and refined the agricultural methodology of natural farming. Some benefits of utilizing Cho's natural farming techniques include better product quality, increased yields, less water consumption, lower fertilizer costs, and lower production costs. These techniques also require no imported fertilizers, pesticides, or herbicides.

Many small farmers in Hawai'i take pride in growing healthier, high quality crops, but often result in a smaller profit. Cho's natural farming techniques can both achieve those goals and also allow farmers to establish a competitive edge.

The techniques of these methods however, are

counter intuitive to the accepted practices taught in agricultural institutions. Having a grant program would give farmers incentives to attempt to implement Cho's global natural farming at a commercial level. We have an opportunity to revitalize the agricultural industry in Hawai'i. We strive for sustainability in agriculture and reduce Hawai's dependency on imported produce and instead increase our yields to meet local needs. This may be one of many much needed vehicles to help farms in Hawai'i succeed.

Senate Bill 684: This bill pertains to addressing the numerous problems that Lake Wilson has faced for years. Bill 684 would establish a Lake Wilson Task Force whose mission will include assessment of the condition and quality of the waters of Lake Wilson and recommend actions to the Legislature to improve the water quality and general condition of the Lake.

Improving the water quality will provide a better ecology for the fishery. If the gaming fish habitat can one day be restored, Lake Wilson may once again become a prized fishing spot for pro bass tournaments. The task force will try to mitigate the treatment plant's spills that have been polluting the lake. They also will try to find the best way to minimize illegal dumping. When the quality of the water improves, then it may be possible to use the water as a cheaper alternative in providing water to the North Shore's agricultural expansion. This is an important priority in enhancing the North Shore as one of the state's last domains for agricultural production.

We will continue to share with you in a future column other bills that may have impact on our district.

Mother boast of son on phone book cover

By Bernadine Zukevich

My son is a local boy born and raised on the island of Oahu, North Shore. A long-time Hale'iwa resident, Kapono Zukevich made the cover of the 2011 Hawaiian Tel Phone Book.

Gone for three years on the mainland and coming home to Hale'iwa, the beauty, my Ohana & friends, I was welcomed and surprised with the awesome and overwhelming news of my son pictured throwing net making the cover. I have repeatedly asked him many times to share his story and let people know of the mystery fisherman on the cover. Aside from his Ohana and good friends knowing about this experience, Kapono is a shy and humble person not the type to wa-lah-au I would always get the same response; "No need Ma!" BUT not Mother dearest! So I called the NSN and shared my story with editor Ron Valenciana and he was nice enough to hear me out and ask me to gather some information on how it happened to be. So here it is... One day he went to Mokule'ia to throw his fishing net and a stranger approached him and asked if he could take some photo

shots of him and little that he knew that five years later his photo is on the cover of the HTB 2011.



ATTENTION!

All Medical Related Businesses

Our 2011 MEDICAL DIRECTORY will be published: April 6, 2011

***Ad deadline is: March 24, 2011**

Who should advertise?

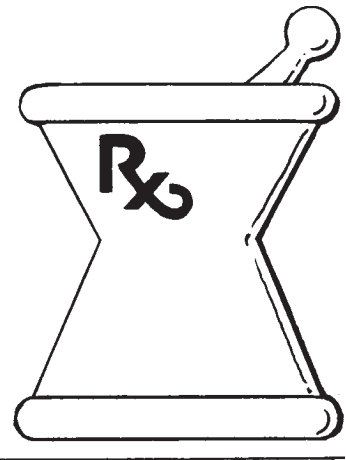
*Doctors, Dentists, Clinics, Hospitals, Pharmacies,
Optometrists, Chiropractors, Physical Therapists,
Massage Therapists, Insurance Companies, Lawyers,
and all Medical Care Professionals.*

Call today to reserve ad placement

637-3138

North Shore News
or email: NShoreNews@aol.com

Your Prescription for Success



DRAFTPLANS HAWAII

- Over 10,000 floor plans & blueprints available for purchase online. Gather ideas for your own design.
- Drafting Service available for new home designs, additions, renovations, decks, fence, rock walls, etc.
- Free property specifications & title search info.



www.draftplans.com

Call for free estimates:
265-0035



Sunset Beach Elementary School P.T.S.A. Family Fun Fair

Saturday, March 12
10:00 a.m. to 3:00 p.m.

- Xtreme Fun Bouncies! Obstacle Course!
- Rock Climbing Wall! Twister Ride!
- Ocean Playzone! Xtreme Shark Slide!

No Refunds on Wristbands

Presale wristbands for UNLIMITED use of Xtreme Fun rides available at Sunset Beach Elementary School office.
(good for one-time climb on Rock Wall)
\$18 (\$20 on March 12th)

Mahalo to the North Shore Chamber of Commerce & the S.B.E.S. PTSA for sponsoring our Fun Fair!

The Salvation Army Family Store
- Wahiawa store only

**All clothing 50% off
every day and
\$.99 clothing specials
on Fridays**

open Mon-Sat 9am-6pm
subject to change



For more information contact:
Fred Deisser at 808-522-8425
Located at 322 Sumner St., Honolulu 96797
Across from K-Mart in town



A Message From State Representative Gil Riviere

Aloha!

In our last column, we discussed some of the bills that are currently in the Legislature and my views on those issues. For this article, we will focus on district projects and constituent concerns.

The Laniakea Traffic Alternatives Study is finally about to begin – they say. The Notice to Proceed was delivered on January 18, 2011 and the Department of Transportation recently informed us that Parsons Brinkerhoff will host a meeting on the North Shore in May to establish an advisory working group. Through the working group and public meetings, Parsons expects to complete the study in early 2013.

The first edition of my new “Gil Gets it Done” TV program includes Kaliko Amona, Dexter Kisha and Monique Mironesco, who joined me to discuss the Farm to School Movement, Kokua Hawaii Foundation’s AINA IS program, and the Sunset Beach Elementary Salad Bar. Find the broadcast schedule or watch the 30 minute program on-demand at GilRiviere.Info.

I met with Hawaii Public Housing Authority’s (HPHA) Executive Director, Denise Wise, to discuss the Waialua Kupuna Housing. Some of the issues reported by area residents are late night noise, drug activity, overgrown vegetation and strangers frequenting the property. Ms. Wise accepted responsibility and committed to solving the concerns while HPHA completes a contract for a new property management company.

Congratulations to the Laie and Kahuku volunteers for connecting their two communities with a new bike path across Malaekahana! This long desired amenity was completed very quickly with the financial support of Hawaii Reserves Inc, some skillful volunteers, and some less skilled volunteers like me.

The Kahuku windmills have gone on line. Another wind project is being considered near Kahuku and Kamehameha Schools is planning a wind project upslope in Kawaihoa. Renewable energy is becoming more reliable and popular and our district is helping lead the way.

There are a number of ways to contact our office. Please visit Room 319 at the State Capitol, call 586-6380, fax 586-6381 or email RepRiviere@capitol.hawaii.gov. Did we mention you can reach us online at GilRiviere.Info?



“Shaka” man’s bust goes to Laie Elementary

By Maria Feagai

A beautiful bust of Hamana Kalili, originally sculpted by the world renown artist, Arvid Fairbanks, will be presented to the Laie Elementary School on March 11th at 8:15 a.m. in conjunction with the school’s Super Citizen Assembly. Brigham Young University Hawaii is donating the bust, and houses the original bronze bust. Hamana Kalili is not only credited with originating the gesture of what is now called the “shaka sign” or “hang loose”, but was a key figure in Laie in the early days of the famed Laie Hukilau. He had lost his middle three fingers in an accident, and couldn’t help but make the sign that is so globally famous today.

WHAT HAPPENS IF THERE'S NO MORE FOOD?

The North Shore Foodbank Needs Your Help!

Presently, our food pantry shelves are short on food for our hungry North Shore neighbors. Some are homeless but not all. Many are senior citizens on fixed incomes. Many are children and teens. Many are working poor and laid-off workers needing food assistance for the first time. You can make a difference for needy individuals and families who are struggling with hunger and have no where else to turn. Last month we distributed over 1,000 food bags. Each bag had 10-12 cans of food.

**If You Can Give We Need Your Help.
Now More Than Ever.**

TOP NEEDED ITEMS

- Financial contributions
- Canned meats/tuna
- Canned meals*
- Canned soups
- Canned fruits & vegetables
*spaghetti, chili, spam, corned beef, vienna sausage

DROP OFF

North Shore News
Hale'iwa Post Office
2nd Floor

Cash Donations payable to:
Once A Month Church
P.O. Box 1117
Hale'iwa, HI 96712

WHAT HAPPENS IF NO ONE HELPS?

808-342-3969

501c3 non-profit org.

Waialua Bullpups Football

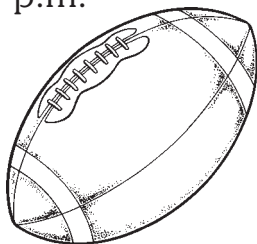
2011 Registration

Saturday, April 9, 2011

9 a.m. - 12 p.m.

WCA

All divisions
(Tiny Mites – Midgets)
www.WaialuaBullpups.org



Oceanside Chapel Service at Turtle Bay Resort



Every Sunday at 9 a.m. in the beautiful oceanside wedding pavilion.

Hosted by Pastor Ron Valenciana

- Non-denominational 45 min. service
- Traditional & Contemporary music
 - 15 minute sermon
- Free gift to all first-time visitors
- All are welcome! Free validated parking

For more information call Pastor Ron at 342-3969.

*When church is pau, enjoy dining at the Palm Terrace, Hang Ten Pool Bar, or Lei Leis.



Leonardo's

AT TURTLE BAY RESORT

An Italian Sharing Experience

BUY ONE PIZZA AT REGULAR PRICE

& RECEIVE THE NEXT 1/2 OFF!

PRESENT THIS COUPON TO YOUR WAITER - FOR DINE IN ONLY
EXP: 3/15/2011

OPEN FOR DINNER DAILY
5:30pm-9:30pm

LOCATED LOBBY LEVEL NEAR THE ELEVATORS

Parking is always COMPLIMENTARY for Restaurant Patrons.
For Dinner Reservations Call 293-6000.



Councilman
Ernie Martin
Serving You in District 2

When Mayor Peter Carlisle delivered his State of the City address to the residents of Honolulu on February 24, he said we all need to know the truth about where the city is right now, "and it is not a pretty truth," he warned. He announced that the City would be selling nonproductive real estate and privatizing the management of the City's affordable housing properties. The Mayor contends that this would free up money that could be used for more important services. We will soon see more of the details of his proposals for certain user fee increases from city golf courses to public parking lots. There are no sacred cows, he said when asked about possible cuts to the police and fire departments. He made it very clear that everyone will be asked to share the pain inflicted by a reduction in the City's operating expenses. The Mayor was a bit more optimistic about the return on an investment in public work projects, with most of the money going to the \$5.5 billion rail project and upgrades to the city's sewage and waste water systems. The Mayor also wants to support the film industry as a way of attracting outside investment to Honolulu. Stressing the need for a more professional approach to managing the city, the Mayor acknowledged the experience and dedication of his cabinet, many held over from the previous administration. When asked to comment on the

Mayor's proposals, City Council Chair Nestor Garcia said that he agreed with him on several issues such as contracting out the management of the City's affordable-housing portfolio as long it remains affordable for those in need. It is an uncertain time for Oahu residents dependant on city services, including those who deliver those services, the thousands of city employees who already have taken pay reductions through furloughs. While the Mayor wants to end furlough Fridays, he is clearly looking at pay cuts and even layoffs to make up the difference. With a budget deficit of \$100 million, everything is on the table. Critical deliberation between the Mayor and his administration and the City Council begins with the submission of his actual budget to the Council in early March. By the time you receive this issue of the North Shore News, the Mayor's actual budget will have made headlines along with more details of his specific budget cuts and fee increases. As budget Chair, I assure you that it will be the beginning of a very transparent process that will afford the public every opportunity to participate in the decisions on where the cuts need to be made and how wide-spread the sacrifices must be to balance the budget. Your tax dollars drive the discussion. Please pay close attention to how they are spent. I will be updating the community on the progress of budget deliberations which will continue through mid-June. I encourage you to contact me with your views as we consider the preliminary budget proposals. Public testimony in support or opposition to these proposals can alter the course of the decision-making. You are welcomed to call my office at 768-5002 or e-mail me anytime at emartin@honolulu.gov. Mahalo.



OFF da Island in Iraq

Manly Souza grew up in Waialua and he is currently on his third tour of duty in Iraq. He is pictured here on a tank that has seen its better days in the city of Balad, Iraq. His previous two tours were in Bagdad and Kirkuk. He told us he grew up reading the NSN and asks his Mom to keep him current by sending every edition overseas. He says reading the NSN always reminds him of the good times back on Oahu's North Shore. For more info on our OFF da Island photo campaign turn to page 19.

NEW HOPE CENTRAL OAHU PRESENTS
FLOURISH

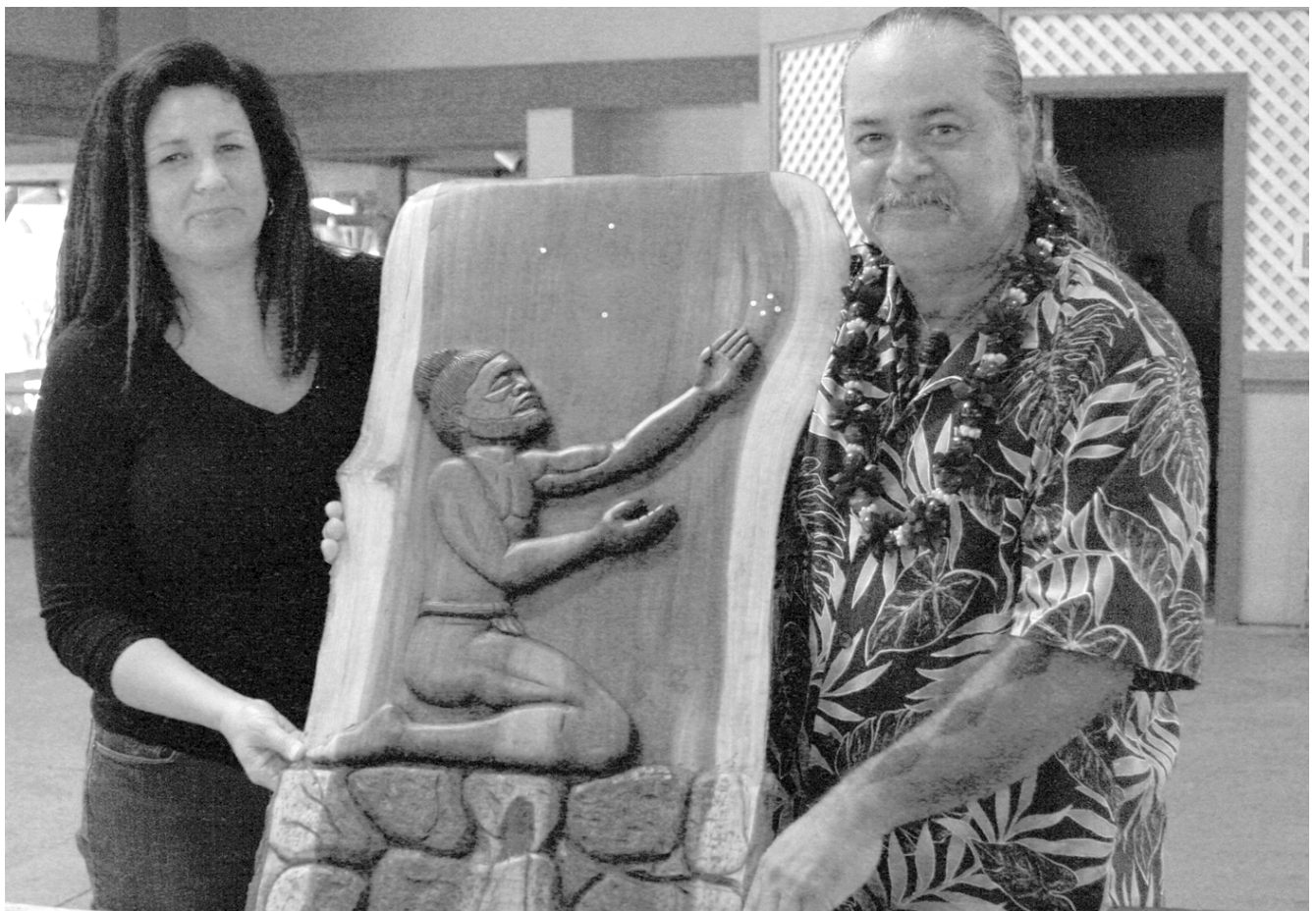
WORSHIP CONCERT
All Things New!

AND HE WHO WAS SEATED
ON THE THRONE SAID,
"BEHOLD, I AM MAKING ALL THINGS NEW."
ALSO HE SAID, "WRITE THIS DOWN,
FOR THESE WORDS ARE TRUSTWORTHY
AND TRUE."

REV. 21:5 (ESV)

FRIDAY, MARCH 18, 2011
5:30PM - 6:30PM
FREE DINNER
6:30PM - 9:00PM
FREE WORSHIP CONCERT
HALE'IWA ELEMENTARY SCHOOL





Kahu carves Makahiki panels for new Disney hotel

North Shore Kahu Butch Helemano (right) recently unveiled 12 wooden panels he carved depicting the story of Hawaiian Makahiki, the annual harvest celebration. Each panel depicts a sequence of the Makahiki season from the opening prayer (pictured above) to bathing in the ocean for the closing of the season. Kahu Helemano was commissioned to do the carvings by Walt Disney Imagineering Art Director Joan Hartwig (pictured left). The panels will hang in the waiting lobby of the new Makahiki Restaurant at the Disney Hotel in Ko 'Olina due to open later this year. (Ron Valenciana photo)



*** RECRUITING SEASON ***

North Shore Canoe Club

Hale'iwa Beach Park • Across Jameson's Restaurant
 Tuesday/Thursday at 5 p.m. • Saturday at 7:30 a.m.
 Men & Women 18 & over • No experience required

Join This Great Tradition
 For more info call 753-7974
www.northshorecanoecub.com

Keiki recruitment 17 & under begins April 4
"Bring your Mana"

BULLETIN BOARD

LIC. #AC 18275



COWPER CONSTRUCTION
GENERAL ENGINEERING CONTRACTOR
 Full Service Sitework Contractor
 Septic Systems & Tanks
 25 yr. exp.
Michael Cowper 638-7200
 cowperhawaii.com



ROB'S
 auto repair service


Robert Oakley ASE Certified Master Mechanic Computer & Electrical Specialist
 Owner Waialua, Hawaii (808) 330-0459

N-C PLUMBING & SUPPLY
 Cont. Lic. No. C-8913



- RESIDENTIAL & COMMERCIAL SALES & SERVICE
- CONTRACTING & DESIGN • HOME PLUMBING SERVICE
- PLUMBING FIXTURES, HEATERS • FREE ESTIMATES

Nestor P. Calilao (Owner) Bus: 637-8662
 P.O. Box 769 Res: 638-5157
 Waialua, HI 96791 Cellular: 372-8718
 email: nncplumbing@hawaii.rr.com



DR. PORTER TURNBULL
 Chiropractic Orthopedist
 (808) 638-8740
 Appointments available Mon.-Sat.
 (evenings by appointment)

- Industrial accidents & auto injuries
- Sports injuries • Spinal care
- Safe, Effective, and Gentle

Bank of America
 Home Loans

Jay Oku
 Mortgage Loan Officer

Tel: 808.275.8900 Cell: 808.393.0707
 jay.oku@bankofamerica.com

HI2-902-01-03
 55 Merchant St 16th Floor, Honolulu, HI 96813
 Equal Housing Lender



Specializing in vegetarian foods, vegan foods, whole foods, organic food. Wheat free, dairy free, raw foods, gluten free. A complete selection of natural foods for 37 years. Make earth day, everyday.
 Open 7 days.
 Mon.-Sat. 9am-6pm.
 Sun. 9am-5pm

66-445 Kam. Hwy
 Haleiwa, Hawaii 96712
 Next to the Post Office
 808-637-6729 • 808-637-1922 fax

HAIR SPECIAL
 Full Highlight and Cut \$100.00
GINA WALKER
 Hairdresser to the stars from Malibu, CA
 Cut and Highlight Master
 Open Mondays
 AT SALON ATLANTIS
 375-3984 • 637-5211

MacMurray and Sons Construction LLC
 New Construction. Remodels, Granite.

Jason MacMurray
 BC 30144
 Licensed, Bonded, Insured

1-808-479-7365
 Fax: 808-638-7121
 Jason@macmurrayandsons.com
 www.macmurrayandsons.com



Waialua Bakery
 New Hours:
 Open Monday - Saturday
 10am - 5:00pm
 fresh sandwiches, smoothies, and baked goodies
808-341-2838
 Fresh Fruits and Greens supplied by:
Farmer and The Baker LLC
808-341-1992




ISLAND PROPERTIES
 SHERRILL ERICKSON
 Realtor Associate
 Res. (808)293-1056 • FAX (808)955-9541
 2615 S. King St., Suite 2E/F
 Honolulu, Hawaii 96826
 Serving the North Shore since 1980



YMCA CAMP ERDMAN

69-385 Farrington Hwy., Waialua, HI 96791
P (808) 637-4615 F (808) 637-8874



FOR YOUTH DEVELOPMENT
FOR HEALTHY LIVING
FOR SOCIAL RESPONSIBILITY

2011 Family Fun Programs

YMCA Camp Erdman Family Camp is a great way to spend uninterrupted time together while creating valuable memories all in a safe and fun environment. All Family Camp weekends include meals, accommodations and activities. Visit our website for rate information.

APRIL 22-24

Health and Wellness Family Camp & Race

MAY 06-08

Mother's Day Family Camp

JULY 01-03

4th of July Family Camp

OCTOBER 28-30

Halloween Family Camp

2011 SUMMER PROGRAMS

June 19 to August 12, Weekly Overnight Camps

Camp is the highlight of the summer for keiki all over Oahu, with activities like rock climbing, horseback riding, exploring tide pools, archery, and more. It's no mystery why kids can't wait to come back! All rates are per week and per child except Counselor In Training which is a two week program. Rate includes meals and activities.

TRADITIONAL CAMP, AGES 6-15

Rate: \$525/Week Member Rate: \$420/Week

HORSEMANSHIP CAMP, AGES 8-15

Rate: \$795/Week Member Rate: \$636/Week

SURF CAMP, AGES 8-15

Rate: \$725/Week Member Rate: \$580/Week

ROCK CLIMBING CAMP, AGES 10-15

Rate: \$815/Week Member Rate: \$652/Week

COUNSELOR IN TRAINING, AGES 15-17

Rate: \$1,300 Member Rate: \$1,040

HAWAIIAN CULTURAL CAMP, AGES 8-15

Rate: \$725/Week Member Rate: \$580/Week

ENGLISH AS A SECOND LANGUAGE, AGES 6-15

Rate: \$775/Week Member Rate: \$620/Week

What's your Dream?

REGISTER NOW

ONLINE:

www.camperdman.net

PHONE:

(808) 637-4615



2011 Strong Communities Annual Support Campaign.



FOR MORE INFO
www.camperdman.net OR (808) 637-4615

BULLETIN BOARD

BOW WOW BUNGALOWS

Licensed Boarding Kennel
North Shore, Oahu

Reasonable Rates • Ph. 637-2562

These Dogs Have Fun!



The Roof Repair Specialists

"The Name Says It All"

Roofing
Repair • Maintenance
Coatings • Decking • All Types
Lowest Price • Guaranteed
Free Estimates • Insured

Dave McEuen

dave@theroofrepairspecialists.com

For Prompt Service

888-8290

Island Wide 24/7

"Family Owned and Operated"

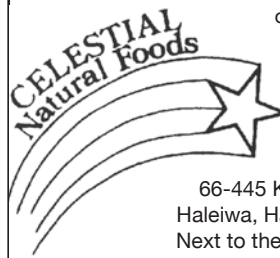
Paradise Lua

Parties • Special Events
Anykine Private or
Public Functions



"Portable Sanitation at its finest"

690-8116



Featuring the largest selection
of certified organic produce
on the North Shore.
No panic...ours is organic.
Open 7 days.
Mon.-Sat. 9am-6pm.
Sun. 9am-5pm

66-445 Kam. Hwy
Haleiwa, Hawaii 96712
Next to the Post Office
808-637-6729 • 808-637-1922 fax

Munden Design & Build

Lic.#BC19632

Design • Plans • Permits • Construction
Additions & New Residences

808 391-8616

Providing quality work since 1978

Financial Management Solutions

Secure Your Future With Professional Planning

- Tax Preparation • Financial Planning
- Accounting • Quick Books Advisor
- Small Business Advisory Service
 - Estate & Senior Planning
- Wealth Preservation Strategies

808-637-9690 fms@hawaii.rr.com

Located in North Shore Marketplace
66-250 Kamehameha Hwy, Suite C-209 Haleiwa, HI 96712

Pilates with Linda Yadao

Private, Semi-Private and
Mat Classes
Over 30 Years Experience

Call: 637.1230
linda@ynrmarketing.com



MEDITATION
•
NON-INVASIVE
ELECTRO PRESSURE
REJUVENATION
THERAPY
•
BREATHING
TECHNIQUES AND
CLASSES
•
PERSONAL TRAINING

**66-216 FARRINGTON HWY • SUITE 100
WAIALUA • 808-637-5433**

When it's time to tie the knot...

www.hawaiiweddingminister.com

informal beach weddings a specialty

(808) 342-3969

*Malia's
North Shore Massage*
375-3879

Deep Tissue
Hot Stones
Lomilomi
Swedish
Shiatsu
Sports
Hapai

Malia Nicoll, LMT, MAE 2071



CLASSIFIEDS

The North Shore News is published every other Wednesday and mailed free of charge to all North Shore homes and businesses. Extra copies may be obtained at our office.

PRESS RELEASE POLICY: Submit press releases in person or by fax, mail or email to Editor, North Shore News, P.O. Box 1117, Haleiwa, HI 96712. Please type your releases and keep them shorter than 200 words unless they are of an unusual news interest. Releases should be viable news stories and are published on a **space available basis only**, with priority given to those received in our office first. You may attach photos. We are not responsible for the return of any photos. All materials are submitted at owner's risk. We reserve the right to edit and/or refuse all submissions including advertising.

EDITORIAL POLICY: We welcome articles and letters from our readers. Letters to the Editor are published on a space available basis only and preference is given to shortness of length, and quality of content. We prefer to run not more than one letter, per person, per 6 month period. Letters subject to edit.

Views expressed by our contributing writers and advertisers do not necessarily reflect the view of the management and staff of the North Shore News. All rights reserved. Reproduction in whole or part without permission is prohibited. © 2011.

♥♥Need a minister for a North Shore wedding? Hundreds of knots tied for happy couples on Oahu. Simple beach-side ceremonies to formal church or chapel services. I'll make your special day an extraordinary memory. Call & leave clear message with phone number & possible date, time & place. 342-3969. Also: Vow renewals, house blessings, baby luaus.

PAUMALU ELECTRIC
David C. Hancock
638-9054 / Lic#C18074

SHORE ELECTRICAL SERVICE
New Const-Remodels
638-0049 / Lic#C20777

FREE Pregnancy Test
Above Haleiwa Post Office
Call for hours 779-4685

LGR Construction
Remodel • Repair • Design
Drafting • Painting • Small Jobs
Affordable rates. 343-4453/Lic#26759

Dog/Cat Nail Trimming
at your home only \$15.00
Call Julie 637-5395

Aloha Computer
PC Repair/Virus Removal
Fax/Copy/Internet Access
372-2667 or 237-4558

Lawn Care For You
Mowing, Trimming, Light Hedging
Call Thomas 637-5839

Ross McGerty BC24080
349-6359 • 637-9539
From Waialua to Sunset
Make Me the First Call
for Home or Rental Repairs
or Renovations

Seamstress
Rita Bell
497-3666

PARADISE PLUMBING INC.
New Const • Repairs • Remodels
808-368-1473 / Lic. 29856

Holo Holo Mobile Screens
New Screens • New Frames
Screen Repairs • Pet Proof Screens
Sliding Screen Doors • Affordable Rates
Call Today 783-8764

EXPERT ELECTRICIAN
Fans, emergency services, etc.
Jim Richards 371-9369

BEACH PLUMBING & ROOTER
Over 30 years experience
Call Larry 637-6400

GOT SOLAR?
Save Money — Help the Planet
For info call Jim Richards
371-9369

North Shore Tax Service
40+ experience on Oahu
Jeannine Poling
Enrolled Agent Before IRS
Tax questions?
Call 638-5130
or email kumupali@hawaii.rr.com

J & L Services
Landscape Maintenance
Pruning, grooming, hauling
Best rates available
Other services offered
673-1384 or 744-2110

Ohana Clean Up
Carpet Upholstery Cleaning
Pressure Washing
375-1814 • 979-5579

SUP FIT
Stand up paddle fitness
Tues. or Sat. mornings
www.sup-fit.com

Bikram Yoga
Stretch, strengthen & stimulate mind & body.
All ages and levels.
Please call for class schedule
637-5700

SHIATSU • LOMI
Aromatherapy
Milica Barjaktarovic
Lic # MAT8348
351-0848
HumanRemodeling.com

N.S. Property Maintenance
Power wash, painting int/ext,
deck repairs, extensions,
fences, gates,
carpentry & remodels.
Maintenance, lawn & yard.
Chris 381-5213/638-0659

North Shore Pumping
Cesspool & Septic Pumping
Complete Plumbing
Services, new & repairs
Lic. & insured #25567
638-0900 • 291-5089

Lisa Carley Skin Care
637-9400
lisacarley.com
67-292 Goodale Ave. #104
Waialua Shopping Center

LEARN TO SWIM
AT THE
HAWAII SWIM
SCHOOL
ON THE NORTH SHORE
Developing swimmers since 1982
Haleiwa Rd. at Smiley Place
637-4863

PUBLISHER/EDITOR
RON VALENCIANA
TYPOGRAPHY
DOWNTOWN GENERAL STORE
BOOKKEEPING & CLASSIFIEDS
LINDA SEYLER
CONTRIBUTING WRITERS
RON VALENCIANA,
BUTCH HELEMANO,
NATY HOPEWELL

For Advertising Rates,
call
637-3138

SUBSCRIPTION RATES
If you live outside the North Shore area on Oahu, neighbor islands, or the mainland, you can subscribe to the North Shore News. Our annual subscription rate is \$27 for 25 issues delivered by standard bulk mail (2-3 weeks), or \$48 for 25 issues delivered by first class postage (3-5 days). Call our office for payment information at (808) 637-3138.

HOW TO CONTACT THE NORTH SHORE NEWS
Letters to the Editor, and other items submitted for publication consideration may be sent to us via:
MAIL: P.O. Box 1117, Haleiwa, HI 96712
E-MAIL: NShoreNews@aol.com
FAX: (808) 637-8862
PHONE: (808) 637-3138

CLASSIFIED ADS

hawaiiweddingminister.com
342-3969
 31 years experience

Offshore Plumbing, LLC
 Commercial • Residential
 • Septic • Plumbing Design
 Mike Duenas, owner
 Lic #C28113
 630-1407
 Fax: 637-7870 • Office: 371-3451
 offshoreplumbing@yahoo.com

BOBBY'S BODIES
 Tuesday evenings at 5:00 p.m.
 • Body Toning
 Friday mornings at 9:00 a.m.
 • Cardio Pump/Fat Burner
 For more info: call Bobby, owner of
 BOBBY'S BODIES at 637-4150

**Windward Shoe Repair
 & Small Engine Clinic**
 Waialua Shopping Center
 Mon.-Fri. • 8am-4pm
 234-8135

NORTH SHORE TV
 To all earth friendly consumers
 Do you have a TV you no longer
 want or need? Call us first before
 you take it to the dump.
North Shore TV @ 637-4111
**No drop offs without prior
 notification.**

THE LAWN RANGER
 Lawn Maintenance
 no yard too hard
 no lawn too far gone
 We mow betta
 258-6439 Dan Fatchett

**Marianne
 Abrigo, Properties**
 Specializing in -
 North Shore
 Real Estate
 Ask for our list of avail-
 able properties and/or a
 free market analysis.
Marianne M. Abrigo
 "Realtor since 1974"
Office 637-3511
Fax 637-0777
Email mabrigo222@aol.com

Full . Circle Chiropractic
Greg Hungerford DC
 (808) 780-2601
 66-560 Kam. Hwy. Ste. 5
 Haleiwa, HI 96712
 doctorforgolf@yahoo.com

**Automotive Services
 and Restoration**
 • Auto Body & Paint
 • Detail & Shampoo
 • Upholstery
 Rick Estrada - 216-9419

HARVEY'S REPAIR, LLC
 24 hrs Towing Service
*Specializing in opening
 locked car doors*
 Call any time 478-0333

GERMAN CAR SERVICE
 Professional-Qualified
 Technician
 Call Gary
 637-6800

**ANGELS
 PLUMBING**
 Repairs
 Remodeling
 Renovation
638-7878
 Lic. #C12004



Farm seeking responsible
 hard working individuals.
 Work included but not
 limited to harvest, prune,
 clean & prep w/ flexible
 hours. Leave a message.
Call 707-200-1375

B.E. CONSTRUCTION
 Dumptruck & Backhoe
 Services
 Equipment, dirt, rock,
 green waste hauling
 in and out
DEMOLITIONS
BRUCE ESCHE 783-9510

Next Issue - March 23, 2011
Deadline Date-Feb. 10, 2011

HELP WANTED
BUSSERS/SERVERS
 Pizza Bob's in Haleiwa is looking
 for BUSSERS/SERVERS. Experi-
 ence preferred. Apply in person
 at 66-145 Kam. Hwy.

Part Time Secretary
 Computer Skills Required
 Mon-Thurs 10am-4pm
 Fax Resume to 638-7643

COOKS/KITCHEN HELP
 Pizza Bob's in Haleiwa is looking
 for kitchen personnel. Experi-
 ence preferred, but will consider
 training the right people. Apply
 in person at 66-145 Kam. Hwy.

Wanted Private Japanese
 Lessons and Conversation
 Sandra 753-7873

Office Assistants Needed!
 \$10.00 per hour
 15 hours per week
 Positions will grow into more
 hours as needed. Knowledge of
 QuickBooks, Word & Excel
 are a must.
 Please fax or email resumes:
 808-293-9260 fax

**Retail Sales
 Surf & Sea**
 Hawaii's Ocean Sports Headquarters
 is always looking for hard working,
 energetic people to become a part
 of our sales team. Good pay, bonus,
 benefits. Ocean sports experience
 and/or bilingual a plus. Apply in
 person daily 9am-7pm
 62-595 Kam. Hwy., Haleiwa

FOR RENT
 Horse Pasture
 2 Acres
 Corner Olohio & Crozier
 Waialua \$300/month + G.E.T.
 Call Ken Martyn
 637-1986

Gmd Fl. Professional/retail
 Space 466sq'/\$1,382.75/month
 Xcel Bldg. Haleiwa 779-7779

3/2 Fenced in yard. No smoking.
 No pets. \$2,000 month.
 1 yr. lease: Waialua area.
 Available 4/1
 222-6859

**Sophisticated 1 Bedroom
 1 Bath Unit**
 Fully furnished & modern
 Granite/Wood Floors
 Washer/Dryer; Subzero Refrigerator
 Private/Secluded/Gated Estate
 \$1800 month
 Call Lois at 838-1202

FOR SALE
NEW FRAMED WINDOWS
 Still in box...very cheap
 34 @ 81-1/4" x 46-5/8"
 7 @ 68-1/4" x 48-3/8"
 6 @ 60-1/4" x 46-5/8"
 Anodized frame. Gray tint.
 See ad on Craig's List
<http://honolulu.craigslist.org/oah/for/1271716623.html>
<http://honolulu.craigslist.org/oah/mat/1270061937.html>
 Or call: 834-0808

FOR SALE
Blank Canvas
 Pre-Stretched
 Suitable for all types of
 media. Cross bracing on all
 sizes listed below:
 Call 637-6666
 47"x47" \$50
 39"x39" \$40
 36"x36" \$35
 24"x36" \$25
 24"x24" \$20

**DLNR ANNOUNCES TEM-
 PORARY DEEP 7 BOTTOM-
 FISH SEASON CLOSURE IN
 STATE MARINE WATERS**
 The Department of Land and
 Natural Resources (DLNR) an-
 nounces a fishing season clo-
 sure for Deep 7 bottomfish
 species in State marine waters,
 effective March 12 through
 August 31, 2011. Deep 7 bot-
 tomfish species include ona-
 ga, opakapaka, ehu, kalekale,
 gindai, lehi and hapu'upu'u.
 During the closed season,
 commercial and non-com-
 mercial fishing for Deep 7 bot-
 tomfish species is prohibited
 in State marine waters. The
 possession and sale, includ-
 ing the sales by dealers, of
 any Deep 7 bottomfish is also
 prohibited during the closed
 season.

CLASSIFIED ADS

MISCELLANEOUS

Haleiwa Town Center
Retail space for lease.
636-2222

NS Seventh Day Adventists
Saturdays 9:15-12:15
Info: 638-8209

OFF da ISLAND

Are you leaving Oahu on vacation or business? Do you live on a neighbor island, the mainland or foreign country and subscribe to the North Shore News? Try send us a photo of someone in front of a sign or landmark holding a copy of the NSN. Email your photo along with the person or persons' name, community of residence, telephone number and photo location to: NShoreNews@aol.com. Or, mail to OFF da ISLAND Photo, North Shore News, P.O. Box 1117, Hale'iwa, HI 96712. We cannot return photos so please send us a copy. Photos received become the property of NSN. Preference and priority will be given to emailed photos.

REUNIONS

The NSN is happy to publish your school or family reunion Free of charge.
Email your announcement to NShoreNews@aol.com.

The North Shore Country Market

Local Community Open Market at Sunset Beach Elem. School. Saturdays from 8am to 2pm. Local produce, fine art work, crafts, food. Vendors welcome. Call 673-3296
www.northshorecountrymarket.org

Statewide Hotline for Litter

1-888-592-2522

Callers need to provide:

1. License plate number
2. Make and model of vehicle
3. Date and time and location
4. What was thrown/blown

Outreach Services

Persons with Disability
Advocacy Benefits Housing
HCIL 54-113 Kawaipuna St.
Hauula, HI 96717
Ph. 293-9775 or 293-9777

Waiialua Farmers Co-op Market

Fresh Waiialua-grown produce plants & more at the Waiialua Sugar Mill

Sat. 8:30 a.m. - 2 p.m.
Wed. 4:30 p.m. - 7 p.m.

North Shore News
Our 2011 Medical Directory will be published:
April 6, 2011
Ad deadline: March 24, 2011
Reserve your space
637-3138 or
email: NShoreNews@aol.com

IGREJA EVAN. BRASILEIRA

Domingos 10:00 am
Quartas 7:30 pm
Sextas-Culto de Oraçao 7:30 pm

Voce e o nosso convidado especial

Behind Hale'iwa Post Office
637-5566
Pastor Luiz • 638-2212

We are open even though the gate is locked!! Call to get in
638-8161 or 589-6242
Kamaaina Land Nursery
65-1140 Poamoho St.
Waiialua

YMCA Camp Erdman

69-385 Farrington Hwy.
Waiialua, HI 96791

3rd Annual 10K Race & 2K Keiki Race

Race Only - Sat., April 23, 2011
10K Race: 7 a.m. for Adults
2K Race: 8:30 a.m. for Keiki
\$25 Before March 14, 2011
\$35 After March 15, 2011

See our website for Packet Pickup locations. Entry deadline is April 20!

No Race Day Registration!

Fee includes post race activities from 10 a.m. - 4 p.m.
Activities include Odyssey/Alpine Tower, Swimming, Archery, Keiki Club, and a chance to talk with trainers and fitness instructors on how to take charge and reach your personal goals.

REGISTER NOW

Don't throw away that old BIKE!

Donate it to Yikes Bikes
A non-profit program at Waiialua High & Intermediate School

637-8200
M-F • 8 a.m.-3 p.m.

COMMUNITY BLOOD DRIVES SCHEDULED FOR OAHU IN MARCH

- Saturday, March 19
Town Center of Mililani, Bloodmobile; 6:30 a.m. - 1:30 p.m.
- Sunday March 20
Waikale Center, Bloodmobile, 7:30 a.m - 2 pm.
- Friday, March 25
Wahiawa General Hospital, Bloodmobile, 8 a.m. - 3 p.m.
- Tuesday, March 29
Brigham Young University, Aloha Center Rooms 155 & 156, 9 a.m. - 5 p.m.

The requirements to be a blood donor are simple:

- Be in good health
- Be 18 years of age or older (17 with signed Blood Bank of Hawaii parent/legal guardian consent form)
- Weigh 110 pounds or more
- Bring a valid photo ID with date of birth

BEACH CLEAN UP

Chun's Reef - 10 a.m.
637-2211
Last Saturday of every month
adoptabeachhawaii.org

Waimea Valley "Community Day"

Saturday, April 16, 2011
Volunteers must be at least 8 years old; however, children under the age of 18 must be accompanied by a parent or adult guardian. To sign up please contact Cybil Rawlins at 638-5855 or email at CRawlins@waimeavalley.net
Volunteers may be assigned to participate in a number of activities, including out planting trees on trails in the North Valley, working in the Valley in our collections, or helping to malama our cultural sites.

Meet at the Visitor Center at 8:45 a.m. The program will run from 9 a.m.-12 p.m. Please wear closed toe shoes and bring sun screen, water and a hat.

This is an opportunity to malama (care for) Waimea Valley, one of Oahu's most treasured cultural resources. Volunteers will work directly with cultural and botanical staff throughout the morning to help to care for this special and sacred ahupua'a.

What's New and Happening at Hale'iwa Elementary School

If you like ono hawaiian food, you'll want to order a 140th Anniversary Celebration Luau Plate. The pre-paid cost is \$12.00 per plate, and tickets are available at the school office. The deadline for pre-sale ticket orders is April 15. Luau plates will be ready for pick up on the day of our 140th Anniversary Celebration, May 6.

Kahuku Library's March Program Calendar

- TUESDAY NIGHT AT THE LIBRARY
- March 1 - Importance of flexibility with Buddy Los Banos
 - March 8 - Focus on Foods: Hybrid Papaya with Ken Kamiya
 - March 15 - Children Are Our Future with Corrina Moefu
 - March 22 - An Evening of Irish Music - BYUH folks
 - March 29 - Princess Ruth film and talk

SPECIALS

- March 22 - Teens Kahuku-Kon 2:30 - 6 video gaming, contests
- Every Thursday from 9 to 1 AARP Tax Help - free
- March 4 and 7 Book Sale Friends of the Library Kahuku 7 to 4:30 Friday 7 to 3:30 Monday
- March 14 Book Club 11:00 am Zeitoun by Eggars

KEIKI

- Wednesdays: 1pm After School Club (except spring break March 16)
- Thursdays: 10am Keiki Storytime (except March 17 NEW Keiki Playtime)
- Bookmobile runs on Mondays call for route list 293-8935

Dear Editor,

My name is Alaina Clements. I am a fourth grader at Evansville Day School, Indiana. I am doing a state report on Hawaii. I would appreciate it if you could publish my letter in your newspaper. I would like your readers to send me information, postcards, brochures, etc. about Hawaii. They may send their information to:
Alaina Clements
Evansville Day School
3400 N. Green River Rd.
Evansville, IN 47715
Thanks for your help,
Alaina Clements

Happy St. Patrick's Day!



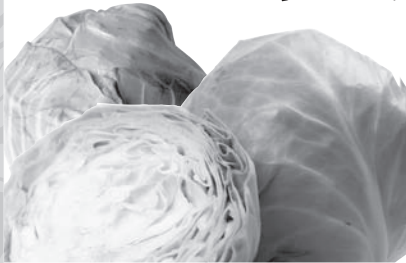
MALAMA MARKET HALEIWA:
OPEN DAILY 7 AM-9 PM
808.637.4520

MALAMA MARKET MAKAKILO:
OPEN DAILY 6 AM-10 PM
808.672.9955

Valid Dates:
3/9/11-3/15/11

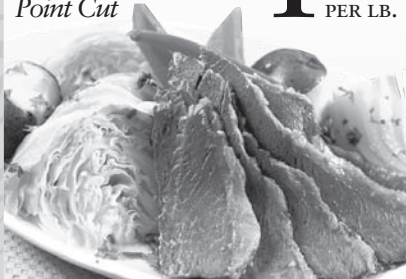
Head Cabbage

19¢ PER LB.



Corned Beef Points
Point Cut

\$1.79 PER LB.



Fresh Air Flown

Atlantic Salmon Fillet

\$9.99 PER LB.



Gatorade
Selected Varieties,
32 oz.

Propel
Selected Varieties,
710 ml.



5/\$5

Libby's
Vienna Sausage
Club Pack
Selected Varieties,
18/5 oz.

\$6.99



Doritos, Cheetos,
Fritos or Funyuns
Selected Varieties,
7.75-11.5 oz.

2/\$5



Häagen-Dazs
Ice Cream
Selected Varieties, 14 oz.

2/\$5.50



Gain Laundry
Detergent
Selected Varieties,
50-63 oz.

\$6.99



Dasani Water
24/500 ml.

\$4.99



Pepsi
Selected Varieties,
12/12 oz.

\$4.99



Fresh Baked
French Bread

\$1.99 EACH



8 Piece Fried Chicken
2 Thighs, 2 Breasts,
2 Drumsticks and
2 Wings

\$8.99 EACH



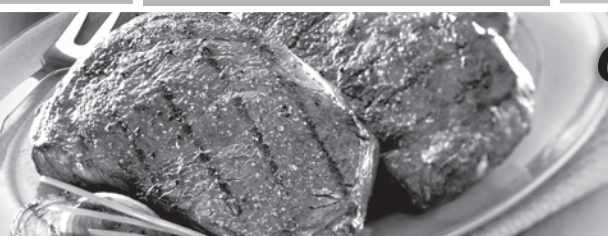
Heineken,
Heineken Light
or Corona
18 Pk. Bottles

\$19.99



THURSDAY

INCLUDES:
7-8 oz. Steak
Rice • Tossed Salad • Drink



Grilled Steak
LUNCH
\$6.99

Hawaii Beverage Fee: Hawaii Beverage Fee of 1¢ per can or bottle will be added to purchase price at checkout. An Additional Hawaii Deposit Fee of 3¢ will be charged for all specialty marked beverage containers.

Limit five units (mix/match) per purchase, unless otherwise specified. We reserve the right to limit quantities. No sales to dealers. Prices plus applicable state tax. Hawaii EBT cards welcomed.