



"E Ala Na Moku Kai Liloloa"

JOB SECURITY

Mariano Lunasco has been the caretaker for the Dole Plantation Puuiki Beach in Waialua for over 33 years. It's reported that he still whistles while he works and enjoys a good life on Oahu's North Shore.

(Photo by all heart shirl)



NORTH SHORE NEWS March 21, 2012 VOLUME 29, NUMBER 6



Rising flood waters bring annual flooding threat

Recent storms brought floodwaters to many North Shore communities from Waialua to Hauula during early March. Hard rains caused rivers and streams to swell. Residents of Otake Camp in

Waialua evacuated to A Red Cross shelter while officials kept an eye on the potential breaching of levees downstream of Lake Wilson. Overall the threats never materialized into a crisis unless you factor

in the appearance and growth of numerous potholes along Kamehameha Highway. (Carol Philips photo)

PRE-SORTED STANDARD U.S. POSTAGE PAID Honolulu, Hawaii Permit No. 1479	Hale'iwa, HI 96712 66-437 Kamehameha Hwy., Suite 210
--	---

PROUDLY PUBLISHED IN
Hale'iwa, Hawai'i
*The Surfing
 Capital of the World!*



OFF da Island in Germany

Estes Cantarero George (pictured here) and his mother Barbara left the North Shore last August to live in Germany. Estes last attended 4th grade at Sunset Elem. Here he is snowboarding in Garmisch, Germany. To keep him warm his loving mother never lets him go outdoors without packing a recent copy of the NSN to remind them of all the good times back on Oahu's beautiful North Shore. For more info on our OFF da Island photo campaign please turn to page 23.

Farmer & The Baker^{LLC}
 (Formally Mokuicia Landscape & Nursery)



**Trees,
Palms &
Shrubs**


Contact Us: 808-341-1992

SIX SPECIAL NIGHTS

MONDAY \$2.50 BEER BOTTLES & DRAFT	TUESDAY \$5.00 OFF PIZZA REGULAR OR LARGE	WEDNESDAY SALAD NIGHT 1/2 OFF SALADS
THURSDAY \$3.50 NIGHT \$3.50 SLICES, SALADS, MAI TAI'S, WINE & BEER	PIZZA BOB'S	
FRIDAY NIGHT \$6.95 BURGER & FRIES Dine In Only - 4:00 PM Until Closing - Haleiwa Shopping Plaza - 637-5095		SATURDAY \$4.50 NIGHT \$4.50 SLICES, SALADS, MAI TAI'S, WINE & BEER (or less)

PLUS \$2.00 Off with this Coupon
 Some Restrictions Apply. See Restaurant for Details.
 When Ordering Regular Priced Items. Good Anytime. One Coupon Per Person.
 Can Not Be Combined with Other Discounts. Expires 04/30/2012.

**HAWAI'I DESERVES
GMO FOOD LABELS**




80% of processed foods in supermarkets have Genetically Modified ingredients (GMO's)

Over 50 nations in the world require labels for GMO foods. The U.S. does not



Our Keiki and 'Ohana have eaten GMO food for over 15 years

As your Congressman I will support labeling and independent safety testing for GMO foods

BOB MARX
for CONGRESS



HAWAI'I FIRST

Like Us On  

Paid for by Bob Marx for Hawai'i

YOU NEVER
KNOW WHO'S
GOING TO
DROP IN.

surfer [THE BAR]

It's more than a bar. It's an original.

CHECK OUT THE LINE UP:

- MAR 21** *Talk Story Series ftg. renowned big wave charger Darrick Doerner
Hosted by Jodi Wilmott | Doors open at 6p – Show starts at 8p.
- MAR 23** Spring Break ALOHA GEAR Party w/ MC Rik Rok / Bikini Tops & Aloha Shirts
\$10 ticket w/Aloha Attire/\$15 without after 9pm/Party rages until 2a.
- MAR 25** Filmmakers Showcase Sundays/ "Fiberglass & Megapixels"
with co-director Derek Hoffman. Show starts at 6:30pm. Non-Ticketed Event.
- MAR 28** *Talk Story Series ftg. extreme sport photographer Mike Prikett
Hosted by Jodi Wilmott | Doors open at 6p – Show starts at 8p.
- MAR 30** Hijah Fijah CD Release Party & Show
Show at 8p | \$10
- MAR 31** Na Mele Rasta Show
Show at 9p | \$10
- APR 1** Filmmakers Showcase Sundays/ "Dane Neves Shorts"
with director Dan Neves. Show starts at 6:30pm. Non-Ticketed Event.
- APR 4** *Talk Story Series ftg. North Shore legend Randy Rarick
Hosted by Jodi Wilmott | Doors open at 6p – Show starts at 8p.

MONDAYS. Hawaiian Music/ Show starts at 7p | Non-Ticketed Event.

TUESDAYS. Kanikapila/Show starts at 7p | Non-Ticketed Event with Drink Specials

THURSDAYS. Get Tubed/DJ Baumer & DJ Twilight spinning from 8p until 2a | \$10 after 9p.

Surfer, The Bar is Open Daily at 6pm.

Space is limited, we suggest ordering tickets for shows in advance.

Surfer, The Bar is 21+ after 10p.

Visit SurferTheBar.com for our full event calendar and updates.

*\$5 charitable donation suggested for Talk Story Nights.

FIND OUT
WHO IS
DROPPIN IN
THIS WEEK.



The Hale'iwa Family Dental Center, Ltd.



presents

"Comfort Dentistry" including—

- Relaxation Glasses
- Television Glasses
- Caring Staff
- Special Medication to help you relax
- Laser Cavity Detection
- New Patients Welcome!

Your teeth are much too important to neglect.

Call: 637-9652
for your reservation

We're conveniently located behind First Hawaiian Bank
in the heart of Hale'iwa.

Editor's Choice

"Lunch with God"

(Author Unknown)

A little boy wanted to meet God. He knew it was a long trip to where God lived, so he packed his suitcase with a bag of potato chips and a six-pack of root beer and started his journey.

When he had gone about three blocks, he met an old man. He was sitting in the park, just staring at some pigeons. The boy sat down next to him and opened his suitcase. He was about to take a drink from his root beer when he noticed that the old man looked hungry, so he offered him some chips. He gratefully accepted it and smiled at him.

His smile was so pretty that the boy wanted to see it again, so he offered him a root beer. Again, he smiled at him. The boy was delighted! They sat there all afternoon eating and smiling, but they never said a word.

As twilight approached, the boy realized how tired he was and he got up to leave; but before he had gone more than a few steps, he turned around, ran back to the old man, and gave him a hug. He gave him his biggest smile ever.

When the boy opened the door to his own house a short time later, his mother was surprised by the look of joy on his face. She asked him, "What did you do today that made you so happy?" He replied, "I had lunch with God."

But before his mother could respond, he added, "You know what? He's got the most beautiful smile I've ever seen!"

Meanwhile, the old man, also radiant with joy, returned to his home. His son was stunned by the look of peace on his face and he asked, "dad, what did you do today that made you so happy?"

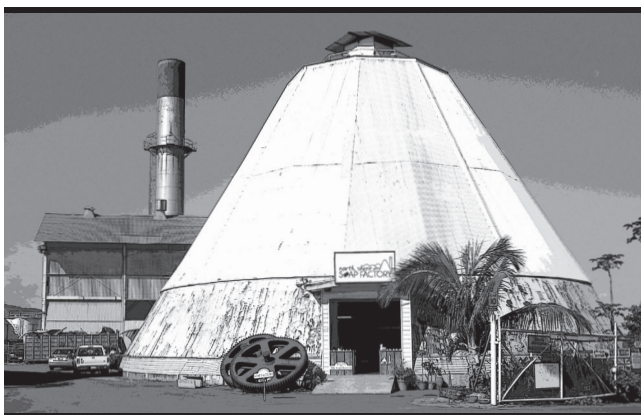
He replied "I ate potato chips in the park with God." However, before his son responded, he added, "You know, he's much younger than I expected."

Too often we underestimate the power of a touch, a smile, a kind word, a listening ear, an honest compliment, or the smallest act of caring, all of which have the potential to turn a life around. People come into our lives for a reason, a season, or a lifetime! Embrace all equally!

Have lunch with God.....bring chips.

People who say that life is not worthwhile are really saying that they themselves have no personal goals, which are worthwhile. Get yourself a goal worth working for. Better still, get yourself a project. Always have something ahead of you to look forward to, to work for and hope for.

*Maxwell Maltz, 1899-1975
American Surgeon and Author*



join our soap drive during Taste of Waialua

Come in on April 7th and trade in any soap (used or not) for a handmade all-natural soap from **North Shore Soap Factory**.

All of your donated soap goes to Clean the World

NORTH SHORE
SOAP FACTORY
67-106 Kealahou St, Waialua
808.637.8400 | northshoresoapfactory.com



for more information, go to northshoresoapfactory.com

You are invited for "3 Days @ the Bay"

NSCF's 35th Annual Easter Services

@ Waimea Bay Beach Park



**Good Friday
Service**

7:00pm Fri, April 6

**Worship HIM
Service**

7:00pm Sat, April 7

SONrise Service

"THE RESURRECTION & YOU"

Mark 16:1-8

6:30am Sunday, April 8

FREE SHUTTLE SERVICE.

FOR THE KEIKI, ILLUSIONIST MIKE VILLORIA
FOLLOWED BY FREE CONTINENTAL BREAKFAST

Brought to by North Shore Christian Fellowship. Phone 808 637 6225

**April 15
5:00am**

Kaiaka beach park



North Shore Marathon - Hawaii

Run, Cheer, Have an Amazing time
more info online at 808racehawaii.com
808race@gmail.com

Polynesian Treasures

*Hawaii's largest selection of
Polynesian handicrafts and Hawaiian inspired gifts.*

North Shore Marketplace • Haleiwa, Hawaii
Open daily from 10 a.m. • 808-637-1288

HAVE A GREAT DAY!

This coming April Fool's Day.....

No tricks, just really amazing
scrumptious TREATS!



Please visit us during our new hours:

DAILY from 5:30AM - 7:00PM

**50% Discount
HOUR**

Discount hour only from
6:00PM - Closing



Paalaa Kai Bakery
www.pkbsweets.com

Waialua - The Saga of the North Shore

Chapter 5 - Ma`ilikukahi

By Kalewa

On Raiatea, in Tahiti, is a sacred place called "Taputapuatea". There, in ancient times, the high chiefs, or "Ari`i" gathered in front of the masses of "Manahuni" for special services such as inaugurating ruling chiefs and recognizing outstanding individuals. When this set of chiefs immigrated north to O`ahu, the "Ali`i" gathered in front of the "Menehune" for similar events at a place called "Kapukapuakea". Kapukapuakea was located just inside the entrance, to the right side of Kaiaka Park.

In the Hawaiian Islands there came to be two primary lines, or families, of royalty. The Nanaulu line became more prominent on Kaua`i and O`ahu while the Ulu chiefs ruled more often on Maui and Hawai`i. The primary chief, holding control of an island or a number of districts, held the title of Mo`i.

It came to pass that the Mo`i of O`ahu was an ill-natured man from Ewa named Haka. He was a greedy aristocrat who paid little regard for his people or his chiefs. The district boundaries were in disarray and confusion reigned over who was in control of what areas. The chiefs and people rose up and besieged him in his fortress at Lihue (now Schofield Barracks). One night, an officer of his guards, whom he had mistreated, opened the gates and allowed Haka to be assassinated, his being the only blood shed during that revolution.

The other chiefs of O`ahu universally chose a man who had been born at Kukaneloko, Ma`ilikukahi, to become Mo`i. He was descended from both the Nanaulu and Ulu lines and was quite popular amongst the other royalty. His inauguration ceremonies were held at the Kapukapuakea, where the menehune, or common people, gathered to hear the sacred drums pound a rhythm to their hearts while the kahunas symbolically re-cut his naval chord and performed circumcision. With such fanfare, Ma`ilikukahi was installed as ruler of O`ahu.

From his headquarters in Waikiki he established permanent boundaries for the six districts, as well as the individual "apua`a" divisions within them. He then assigned chiefs of appropriate rank and temperament to the various lands and ordered that they live upon the lands they governed. Chiefs were not allowed to steal from another's apua`a nor plunder



the goods of the people. Human sacrifice was outlawed, although theft and rapine were punishable by death. Being a religious man, Ma`ilikukahi built several heiau in conspicuous places and held his priests in honor. He ordered all first born male children, of chiefs and commoners, handed over to him to be raised at court. The children were treated very well and educated in the things that mattered.

After sending their sons to court, the people gladly delivered the fruits of their labors as gifts, rather than tribute. The affection for their Mo`i, as well as the lesser chiefs, was great and no taxes needed to be levied. Under this wise, firm and judicious government the chiefs served the people and the land prospered.

The peaceful and prosperous look of the island was mistaken for weakness by a group of ad-

venturous warrior chiefs from Maui and Hilo. They landed their forces first at Waikiki, then on to Ewa, from where they charged inland with the aim of taking the rich taro and sweet potato fields of Waialua. They were met by the young men who had been trained to defend the island under Ma`ilikukahi in the center of the island and utterly defeated. The gulch in which the brunt of the battle took place was literally paved (kipapa) with the corpses of the invaders. Thus, we have the place-name "Kipapa Gulch", which we cross over each time we drive down H-2. One of the invaders was later killed at the place which is remembered by his name, Punalu`u.

In time, Ma`ilikukahi's son, Kalonaiki, continued his judicious rule. His son, Piliwale, did so as well, then set up his court in Waialua, which became the cultural center of the island for some time. For the next few generations peace and prosperity were the norm and no further attacks from the other islands are remembered in the chants and legends.

There were, however, some very interesting visitors to pass through the North Shore.

*Trust in the Lord with all your heart
and lean not unto your own understanding.
In all your ways acknowledge Him and
He will direct your path. (Proverbs 3:5-6)*



Join us Easter Sunday, April 8th
for Brunch, Music by Kapena, and Festivities
for the Keiki. Church Services will be held at 9am in
the Pavilion with Pastor Ron Valenciana
and Miss Hawaii 2011 Lauren Cheape.

ENJOY EASTER BRUNCH WITH YOUR O'HANA

From the scenic Kuilima Ballroom feast on favorites such as Salt Crusted Steamship Round with Au Jus and Cream Horseradish, Chinese Style Whole Steamed Fish in Ginger, Garlic and Chili Soy Butter Sauce, an Omelet Station, Clam Chowder, Sushi, Poke, Somen Noodles, Fresh Fruit, and plenty of desserts. We will have festivities for the Keiki from 10am to 12:30pm on the Kahuku Terrace, including an Easter Egg Hunt at 11:45.

To purchase brunch tickets call 293-6053.

turtlebayresort.com

Tickets are \$48 Adults and \$24 Children ages 4-11, and 15% service charge and 4.712% tax will be added to the final bill. Reservations must be guaranteed and tickets are non-refundable. Seating times: 10am, 10:30am, 12:30pm and 1pm.



Celebrate . . .

Easter

"In Our Midst"
 Worship concert
 Sunday, April 1, 6pm
 Haleiwa Elementary

Good Friday Service
 April 6, 7pm
 Tech Park, 100 Kahelu

*Easter Sunday
 Celebration Service*
 Haleiwa Campus
 Sunday, April 8, 9am
 Haleiwa Elementary

New Hope
CENTRAL OAHU

For more information:
 621-9363
www.newhopecentraloahu.org

Paalaa Kai Bakery
www.pkbsweets.com

APRIL SUPER SAVER

Got cupcakes?

**Order a dozen or more of our
 hand-made cupcakes and receive
 15% OFF all cupcakes**

Just mention our promotion
 "PKBcup" to get your discount!

Please call (808) 637-9795
 to place your order!

The Reapportionment's negative effect on Oahu's North Shore

We have carefully read all of the Star-Advertiser's articles about the State's Reapportionment Commission's deliberations and decisions. And we have noted that virtually all of the coverage has been dedicated to the dissident democrats. However, there is another area which will be negatively impacted by the Reapportionment Commission's decision and that area is our North Shore. For decades, the House representative of the North Shore's five districts (Mokule'ia, Waialua, Hale'iwa, Kawailoa and Sunset Beach/Pupukea) has worked to deal with the threats and challenges facing the North Shore: tsunamis, surf contests, traffic on Kamehameha Highway, especially at Laniakea, Ka'ena Point and its Natural Area Reserve, aircraft operations at Dillingham airfield and numerous other issues. And our representative has been able to accomplish much to preserve and protect the quality of life of North Shore residents.

But now the Reapportionment Commission has decided to split up the North Shore by taking Mokule'ia and a part of Waialua away from the other North Shore districts, thus ignoring the historic Waialua Moku and putting those districts with Mili-

lani. And, in doing so, the Commission destroys the unity and integrity of the North Shore, which will negatively affect the quality of life of residents of Mokule'ia and Waialua.

The Commission's decision also violates the 2011 Reapportionment Commission's own Standards and Criteria: "The state legislative districts should be geographically compact"; "In drawing the state legislative districts, no census blocks shall be split" (but that is violated in Waialua); "Submergence of an area in a larger district wherein substantially different socio-economic interests predominate should be avoided"; and, finally, "Neighborhoods shall be determined based upon existing elementary school district boundaries and/or neighborhood board district boundaries." And the Commission's decision violates all of those standards and criteria.

Reapportionment should not be based solely on data, numbers and percentages, but should consider practical, historical, cultural, social and geographical criteria and the quality of life of district residents.

*Kathleen Pahinui, Waialua
Stewart Ring, Mokule'ia*

Classical Guitar Music of Hawaii

North Shore Native Ian O'Sullivan recently graduated from the Yale School of Music where he received the Eliot Fisk Prize in Guitar. Described as "Thoughtful" by Classical Guitar Magazine and "Delightful" by The Honolulu Advertiser, he performs a range of styles from Classical to Hawaiian Slack Key Guitar. He has performed throughout the United States from Hawaii to New York including Carnegie Weill Recital Hall; The New England Guitar Society; Yale's Morse Hall; and the Hawaii Opera Theater.

He is currently at work on a recording project of Classical Guitar Music from Hawaii. In order to make this happen, Ian has launched a Kickstarter project entitled "Classical Guitar Music of Hawaii." Incentives are given to sponsors, they include everything from a digital download of the album to having a piece composed and dedicated to you!

Ian writes, "I have collected guitar music from Hawaii composers Byron Yasui, Michael Foumai, Jeff Peterson, Darin Au, and Bailey Matsuda. All born and raised in the islands, they share an intimate understanding of classical music, harmony and it's various compositional styles. My inspiration for this project came to me while studying at the University of Hawaii. Popular amongst classical guitarists seemed to be repertoire from places like Japan, Africa, Brazil,

Cuba, and so on. I wondered why not Hawaii? With the release of this CD I hope to make Classical Guitar Music from the Hawaiian Islands more readily available. " If interested you can help to make this happen and sponsor his project at <http://www.kickstarter.com/projects/ianosullivan/classical-guitar-music-of-hawaii> until April 4.

View a youtube recording made by Ian's friends at https://www.youtube.com/watch?v=86RR-9e_EXE Or email at ian.osullivan@yale.edu



Ian O'Sullivan



**THE ADMISSION IS HALF OFF.
THE ADVENTURE IS TURNED UP ALL THE WAY.**



Spring

KAMA'ĀINA SPECIAL

50% off Gate Admission (reg. \$49.95)
Plus 20% off for your out-of-town guests

It's an adventure you'll remember and a deal you won't soon forget. Make a full day out of it by adding dining and our evening show for an additional cost. For more information, call 293-3333.

You can experience:

- 7 island villages & exhibits
- Our new "Go Native" activities
- Canoe rides & pageant
- And more

Some restrictions apply. Must have valid Hawaii ID. Offer ends 4/30/12. Closed on Sundays.

polynesia.com

Announcing our . . .

2012
NORTH SHORE NEWS

Final Call!

Restaurant Directory



Revised

Publication date: April 4
Deadline date: March 22

Owners & Managers:
Reserve your ad space today.

637-3138

or email: NShoreNews@aol.com

NORTH SHORE NEWS

~ Special 25% Discount Offered. ~



**A Message From
State Representative
Gil Riviere**

Aloha, North Shore!

The Reapportionment Commission has concluded its second attempt at drawing new district lines and they have cut the North Shore into two districts. More specifically, they split Waialua in two.

House District 45 is the new district that includes Kaena Point, Mokuleia, most of Waialua, Schofield, Wheeler, Kunia, Poamoho and part of Mililani Town. District 47 includes part of Waialua, all of Hale'iwa and every community around the North and Windward shores until Waiahole. District 46 will be Wahiawa, Whitmore, Helemano and Luanani Valley.

The Commission's original plan kept the North Shore united from Kaena Point to Crawford Home and the windward Koolauloa district united from Kawela to Ahuimanu. However, a Hawaii Supreme court decision in early January voided the maps and instructed the Commission to extract all non-permanent residents from the population figures and then to create new maps.

The next set of maps was dramatically different. Waialua would be connected to part of Makakilo and Hale'iwa would hook up with Kahaluu. After public comment, the next version extracted Makakilo and substituted Mililani, but left the Hale'iwa-Kahaluu district unchanged.

The intrigue continued when a group of dissident Democrats challenged the maps, claiming their districts would unreasonably be altered, simply because they had opposed the Speaker of the House. In so doing, the dissidents presented a draft map that looked remarkably similar to the original configuration, even after extracting some 106,000 people.

Suddenly, there returned a glimmer of hope we could keep the North Shore united! Dozens of residents submitted testimony and several residents joined me to testify in person. The commission voted to defer again their decision, but ultimately did not reunify our North Shore.

The final maps keep District 45 unchanged, but District 47 was amended slightly by moving the boundary north to Waiahole Stream. I live in the part of Waialua that will be in District 47. Some other changes were made to various district lines and the Commission voted to finalize the maps. Unless a new lawsuit comes forth and prevails, the districts are set.

The Primary Election will be on August 11, 2012 and the General Election will, of course, will be on November 6, 2012. Voter registration cards will be mailed by the Office of Elections as soon as they can update the official records and determine voting locations for all registered voters. Everything you need to know about voting in Hawaii can be found at www.hawaii.gov/elections

There are a number of ways to contact our office to share your thoughts and concerns. Please visit Room 319 at the Hawaii State Capitol, call 586-6380, fax 586-6381 or email RepRiviere@capitol.hawaii.gov or visit online at GilRiviere.Info.

**Friends of the
Waialua Bandstand
Present**

**Na Leo Nahenahe o na
Kupuna Hula Halau**

Sunday, April 1, 2012

**At
The Waialua Bandstand
in the Park**

**Come join us
for music and dance!**

*"Life isn't too short.
It's the longest thing anyone will ever do."*

Take the Journey



**Interactive Worship Experience
Sunset Beach Christian Church
6-10pm on Friday April 6th**

GOOD FRIDAY

808-638-0019 ◊ www.sbccc.org ◊ 59-578 Kamehameha Hwy, Haleiwa, HI

SUPPORT NORTH SHORE AGRICULTURE AND HELP KEEP IT COUNTRY!

Come Celebrate **SPRING 2012**

FIFTH ANNUAL TASTE OF WAIALUA

at the Historic Waialua Sugar Mill

Saturday, April 07, 2012 Starts at 8:30am

A gathering of local art, food, coffee, chocolate, Hawaiian music and community groups to celebrate the Rebirth of the Old Sugar Mill Town of Waialua.

The North Shore town of Waialua was once a bustling sugar mill town producing what locals said was the "World's Best Sugar" but in 1996 the Waialua Sugar Mill stopped production and closed its gates after over a 100 years of operation. In recent years, however, there has been a quiet resurgence of shops, businesses, and local product manufacturing that has helped transform the Old Waialua Sugar Mill into one of Oahu's newest visitor destinations.

Makua's (Coco Leong) Sunset Beach Elementary School Ukulele Class, Abrigo Ohana, Kalei, Halau Hula a ke Aloha, Roshan & Shivani / Clear Sky will be performing live.



Abrigo Ohana



Kalei



Roshan & Shivani
Clear Sky



Halau Hula a ke Aloha



- Waialua Farmers' Co-op Market 8:30 am.
- Waialua Coffee Seminar with Dr. Coffee - Shawn Steiman
- Chocolate seminar with artisan chocolate-makers, Madre Chocolate
- Waialua Coffee and Chocolate Mill Tour With Mike Conway
- Waialua historical & agriculture tours - NS Chamber of Commerce
- Surfboard Factory tour at Third Stone
- Natural Shave Ice, local grown produce, art, local food

Mahalo Nui Loa to:

City & County of Honolulu, Hawaii Tourism Authority, Kamehameha Schools, Castle and Cooke Waialua, LLC., First Wind, Friends for Waialua Town, Kathleen Pahinui, Dole's Coffee / Cacao, Waialua Farmer's Market Co Op, Empower Oahu's Community Kitchen, John Hirota, North Shore Chamber of Commerce, Antya Miller, Boyd Ready, and the good people of the North Shore.





City Auditor Reviews 2011

In his second annual report on the Service Efforts and Accomplishments Report for the City and County of Honolulu, City Auditor Edwin Young has once again provided the Council, as well as the general public, with a publication useful for government accountability and future decision making. The report also included the third Citizen Survey conducted by the City and released in conjunction with the Report. I would like to highlight some of the interesting information about the year 2011 as contained in the publication. With the country in a recession since 2007, Hawaii also suffered the ill-effects of higher unemployment and declining revenues. The City was compelled to balance the budget as required by the City Charter and to do so required furloughing employees for two days a month, increasing sewer fees and restricting agency budgets as well as restricting travel and new hires. The City was able to continue delivering basic municipal services as well as make necessary infrastructure improve-

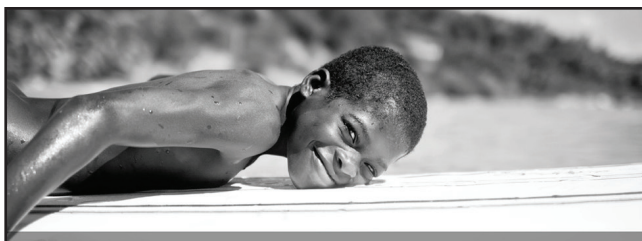
ments to our waste water collection and sewer systems. The Honolulu Area Rapid Transit System, or HART, was officially established to develop, operate and maintain a rail transit system. In 2011, the Council passed a measure to regulate the use of sidewalks in urban areas and passed a ban on fireworks. The Council also increased funding for street repair and maintenance. Some of that money will no doubt be spent on resurfacing badly damaged roads in the aftermath of the torrential rains we experienced earlier this month. The Council also continued to address the problems of adequate affordable housing, homelessness, environmental protection and economic development initiatives. The results of the National Citizen Survey for 2011, included in the Auditor's report, asked Honolulu residents a series of questions relating to important issues in their community. The results clearly demonstrated that the top priorities for Oahu residents are less homelessness, more affordable housing and more job creation. You can view the entire report at <http://www1.honolulu.gov/council/auditor>.



Service Efforts and Accomplishments & 2011 Honolulu Citizen Survey



Report No. 12-04 / March 2012



GOT SURFBOARD?

The ONCE A MONTH CHURCH has assisted the launching of a Christian surf ministry in Haiti. We have pledged our first delivery of 25 good used surfboards. Can you help us reach our goal?

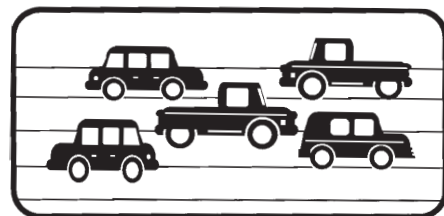
Got a dusty surfboard laying around? Donate it to us and we'll ship it to Haiti. Any size OK.

Call 342-3969 for more information. Mahalo!



DONATE YOUR VEHICLE

running or not



Once A Month Church

a 501c3 charity serving the North Shore
 Over 150 good used cars GIVEN
 to needy individuals possessing
 valid driver's license past 5 years.

342-3969

for more information



Upcoming 2012 • Special Editions • 12 Page Inserts

PUBLICATION DATE

DEADLINE DATE

April 4	North Shore Restaurant Directory	March 22
April 18	Health & Wellness Directory	April 6
May 30	Congratulations Graduates	May 18
June 13	Hanapa'a Fishing Tournament Program	June 1
July 25	Home Improvement Directory	July 13
November 7	Triple Crown of Surfing Program Magazine	October 1
December 12	Christmas Edition	November 29

Call 637-3138 or 342-3969 for discount information
or email: NShoreNews@aol.com

DRAFTPLANS HAWAII

- Over 10,000 floor plans & blueprints available for purchase online. Gather ideas for your own design.
- Drafting** Service available for new home designs, additions, renovations, decks, fence, rock walls, etc.
- Free** property specifications & title search info.



www.draftplans.com

Call for free estimates:
265-0035



Oceanside Chapel Service at Turtle Bay Resort



Every Sunday at 9 a.m. in the beautiful oceanside wedding pavilion.

Hosted by Pastor Ron Valenciana

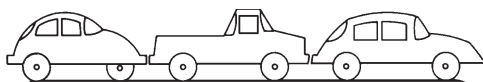
- Non-denominational 45 min. service
- Traditional & Contemporary music
 - 15 minute sermon
- Free gift to all first-time visitors
- All are welcome! Free validated parking

For more information call Pastor Ron at 342-3969.

*When church is pau, enjoy dining at the Palm Terrace, Hang Ten Pool Bar, or Lei Leis.



CAR WASH !



Starting at \$5

Saturday, April 7, 2012

8am to 2pm

Waialua Community Assoc. in Hale'iwa

Proceeds to benefit the North Shore Food Bank
Sponsored by the Once A Month Church
(to volunteer or donate call 342-3969)
OK to bring food donation too

What's Up Waiialua

by Principal Randiann Porras-Tang

Aloha Mai from Bulldog Nation!

Our students are hard at work on their academics and in representing our school and community in our neighborhood, district and state. Mahalo to all for your support of our students, and the school activities. Your support of the Hoolaulea garnered the school \$40,000 which is earmarked for technology to support student learning. Our goal is that every student will have access to a computer during the school day!

Students participate in District History Day

The social studies history day students did a fantastic job at the Central District History Day at Mililani High School last Saturday. All the judges were very positive in their praise of their many projects. The following students from Ms. Holdren's 8th grade class will be going on to the State competition:

Dillon Nahookaika, Megan Andrada, Ashley Nakoa-Kawahakui Junior Documentary: Sit-Ins and Freedom Rides: Reformers Take Action; Jewel Kuewa and Janice Pedro Junior Documentary: Sugar Plantation in Hawaii: A Revolution in Hawaii's Industry; Jason Labajo Junior Website: Steve Jobs and the Computer Revolution; Ocean Ronquille-Morgan Junior Paper: American's Reaction to the Attack on Pearl Harbor

Participation in Democracy Class: Active Participants in the Community

After studying government and the Constitution for several weeks, seniors in the Participation in Democracy class attended the February 28th North Shore Neighborhood Board meeting to see grass roots democracy in action. The following seniors were recognized by the board for attending the meeting and taking the first steps to being an active citizen: Jesse Buenrostro, Tiger Doerner, Francesca Herrera, Faisal Jubran, Iokepa Paty-Miner, Keith Prehn, Jacy Shimahara, and Ezra Travis.

HIKI NO: Student Produce Community News: Waiialua High and Intermediate has been participating in the PBS Hiki No project for two years. The

Hiki No Program is the Nations first Statewide Student News Network in America. Hiki No gives students throughout Hawaii a chance to tell stories about their communities.

This year the students tackled controversial as well as informative topics for Hiki No. WHIS students will also be a home base school for the upcoming season. Students will introduce productions from other schools. It gives me great pleasure to have the honor to recognize 6 outstanding senior students: Alyza Malunao, Cyerra Foster, Stacey Yacapin, Tanya Torres, Lani Mussleman, Alyssa Castellanos. These



Loko Ea fishpond in Hale'iwa.

seniors are successful News Journalist for PBS Hawaii TV's Hiki No News Broadcast Program. The students produced "Wounded Soldier" which tells the story about a young soldier who overcomes his injuries from the war in Afghanistan through the aid of a service dog.

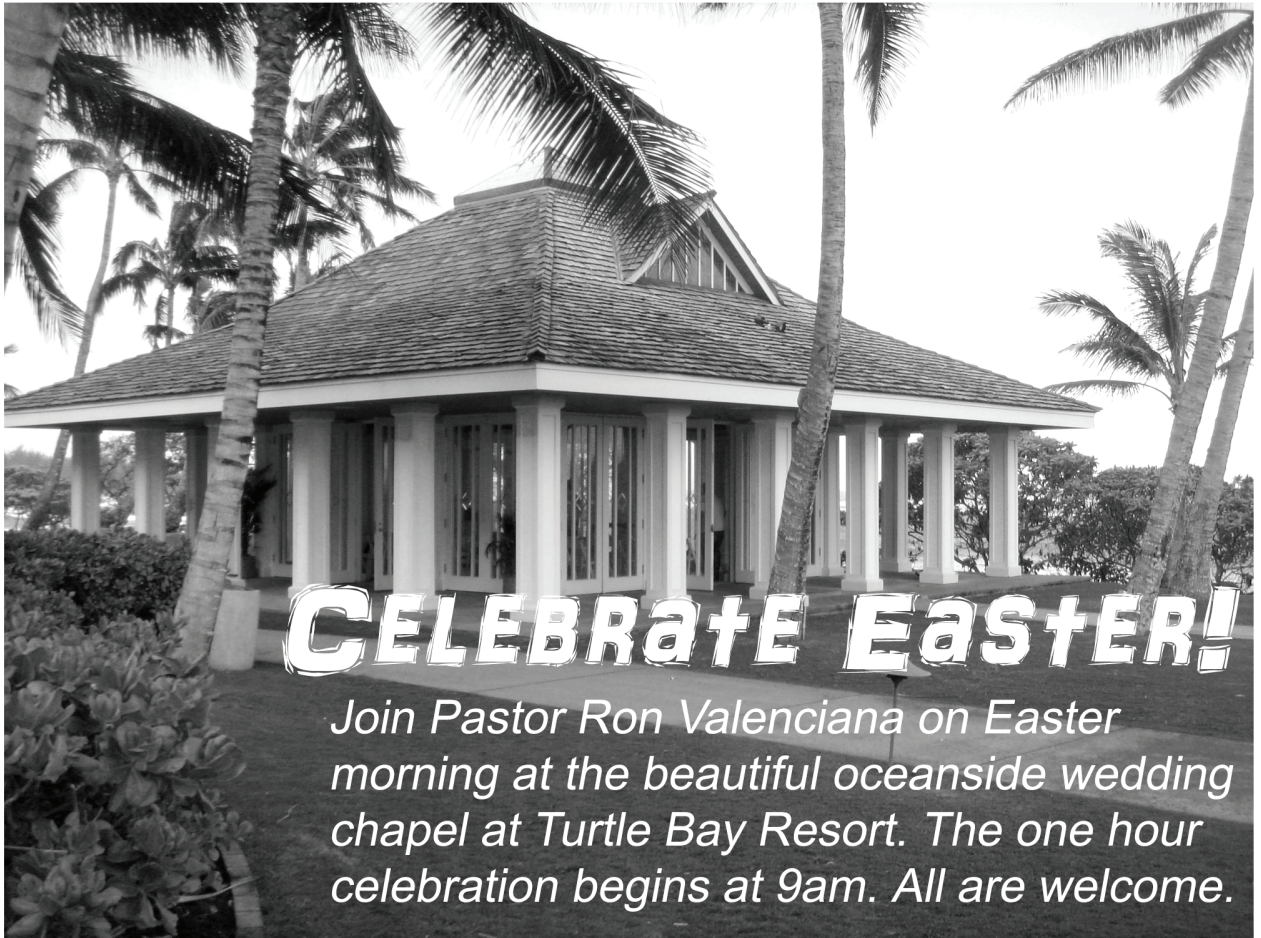
Ms. Alyza

Malunao represented WHIS to anchor the last student broadcast. Alyza, along with student representatives from school across Hawaii, worked with Mr. Robert Pennybacker, VP of Creative Services.

Multi Media students, Alyza Malunao, Cyerra Foster and Stacey Yacapin represented Waiialua High & Intermediate School at PBS TV Hawaii's Hiki No's first statewide student conference at the East West Center located on the University of Hawaii Manoa campus. At the conference the students attended various workshops given by renowned leaders in the News Broadcast industry. Special guest was award-winning CBS cameraman/producer Les Rose, who gave workshops for students and teachers on visual storytelling. Several of Hawaii's leading broadcast professionals also worked with the teachers and students in breakout sessions. They include: Robert Pennybacker, Emme Tomingbang, Jim Mendoza, Lawrence Pacheco, Glenn Yamamoto and Terrence Quinsaat. The end of the day was concluded with an Awards Dinner to recognize outstanding work broadcast during HIKI NO Season One.

Community Connections: Waiialua High and Intermediate school Ms. Martha Akina's Peer Education Students along with the Pono Choice Club worked at the Loko Ea Fishpond in Haleiwa. The purpose was to give students an opportunity to give

Continued on page 17



CELEBRATE EASTER!

Join Pastor Ron Valenciana on Easter morning at the beautiful oceanside wedding chapel at Turtle Bay Resort. The one hour celebration begins at 9am. All are welcome.

PROJECT GRADUATION FUNDRAISER

Sunday, March 25 3 P.M. - 8 P.M.

The Waialua High School Class of 2012 Parent Boosters is hosting an evening of fun, food, dancing, and door prizes at Rumours Nightclub. Live entertainment by Kawao and BET. The fundraiser is to benefit their graduating seniors with a Project Graduation that will rate as the "celebration of a lifetime!"

Tickets are \$15.00 or \$20.00 at the door

Call Sharlynn Ash @ 808-927-0837 or email at: waialuhs2012@hotmail.com

Celebrity Tuxedo

a proud supporter of project graduation will donate \$10 to Waialua Class of 2012

Project Graduation

for every full tuxedo rented.

Prom attendees from any school

qualify for this promotion.

Just mention Waialua Project Graduation at time of rental.

Thank you for supporting the Class of 2012.

CASH FOR YOUR ROLEX GOLD & DIAMONDS TODAY

OUR BUYERS ARE HERE ON THE PREMISES



FROM OUR RETAIL AND COLLECTOR DIVISION

TOP DOLLAR FOR ROLEX AND OTHER SWISS WATCHES, DIAMONDS, GOLD ALL THIS WEEK

CALL 943-6210

PACIFIC DIAMOND WATCH WHOLESALERS 1356 Kapiolani Blvd.

Turtle Bay Resort's SEIS Community Update

provided by Replay Resorts on behalf of Turtle Bay Resort

This article is the eight in a series of updates to the North Shore News community about the ongoing progress of Turtle Bay Resort's draft Supplemental Environmental Impact Statement (SEIS) Preparation Notice and the Revised Plan. Turtle Bay Resort (TBR) has the unique opportunity to honor and respect these lands and community by incorporating traditional Hawaiian cultural values into its environmental review process, planning and implementation of the Revised Plan. This series focuses on the critical cultural components of both the SEIS and Revised Plan. For more information and the latest news about Turtle Bay Resort's SEIS, please log onto www.turtlebayseis.com. All previous articles that are part of our SEIS Community Updates are available online.

Our Proposed Action, otherwise known as our development plan, includes two hotel sites, four beachside parks, and a Gathering Place amongst many site and land improvements that will be done. A draft supplemental environmental impact statement (SEIS) is currently underway that will summarize possible environmental impacts, including traffic, of our Proposed Action; it is expected to be completed and made public sometime in the first half of this year.

Recognizing the need to preserve the unique North Shore environment and various ecosystems, the following are a couple of numerous conservation efforts that we proposing in our Proposed Action.

The Punaho'olapa Marsh is a spring fed wetland of approximately 100 acres that provides valuable habitat for a multitude of birds. When the Palmer Golf Course was constructed in the 1990s, a moat was constructed around much of the perimeter of the marsh creating additional standing water for water birds. Our Proposed Action will include further work to enhance these marsh wetlands for the benefit of endangered water bird species including the Hawaiian stilt, the Hawaiian colt, the Hawaiian common moorhen and the Hawaiian duck.

Additionally, our Proposed Action plans for the placement of a conservation easement on agricultural lands to promote greater food security. Currently, while there is no existing agricultural activity on the Turtle Bay lands, approximately 14 acres of the SEIS lands are presently zoned for agricultural uses by the City and County. We also have approximately 469 acres of agricultural land mauka of the

resort's subject lands. Plans are in place to develop long terms leases that will provide adequate tenure for leasehold farmers to invest in their farming operations as necessary to provide the quality and quantity of produce desire by the resort kitchens. There are also plans to work with farmers and various agencies to develop an agricultural processing center on the lands.

With every aspect of our planning, we endeavor to preserve, enrich, and perpetuate the native Hawaiian culture as much as possible. Additionally, we strive to preserve the unique environments and ecosystems found throughout the Turtle Bay Lands as much as possible.



Lasting Love

Willis Ward (89) and his longtime sweetheart Esther (83) recently celebrated their 65th wedding anniversary on March 6, 2012 at Dot's in Wahiawa. They live in Whitmore Village. Willis is a WWII veteran.

**We Pay You
\$100
CASH & FREE
TOWING
for unwanted vehicles
(complete)
636-7183
North Side Towing**

North Shore Food Bank

You can help feed the North Shore's homeless & hungry by donating non-perishable canned foods to the North Shore Food Bank located in the North Shore News Office above the Hale'iwa Post Office.

637-3138

Prefer to contribute financially?

Check can be made out to:

Once A Month Church
P.O. Box 117, Hale'iwa, HI 96712

TOP 5 MOST NEEDED ITEMS

- Financial Contributions
- Canned meats or tuna & soups
- Canned meats & soups
- Canned vegetables & fruits
- Canned beans

No donation is too small.

501c3 non-profit

What's up Waialua continued from page 14

back to their community as well as gain some cultural knowledge. The students got some brief knowledge on the history of the pond then cleaned and cleared the invasive grass in the pond. They learned about fishing regulations, identification and how to fish using a throw net. With all said, the students had a great time! Big Mahalo to Kimi Apiki and her crew for coordinating our field trip.

The Waialuan is online: This is the first year that the student newspaper Waialuan is being published on line. If you are interested in viewing the school newspaper, go to www.waialuan.com. Please feel free to log in and comment on the articles or give our student reporters "props" for their efforts.

AVID in the Complex: The Department of Education and Mrs. Pat Park, our Complex Assistant Superintendent, has fostered collaboration between the complex schools. A complex initiative is AVID, Achievement Via Individual Determination. This program provides students with strategies preparing them for college and career readiness. Teachers from Waialua High, Haleiwa Elementary, and Waialua Elementary utilize AVID strategies in the classroom. If you see your students writing in the margin, studying off of Cornell Notes, or organizing their binder, they are using a few of the AVID strategies. Complex school teachers annually attend the national AVID conference to learn more about strategies and supports that result in students becoming independent and confident learners. This year our AVID student, Angela Kroeger, will be one of two inspirational speakers presenting at the AVID conference in Sacramento. **Congratulations to Angela!**

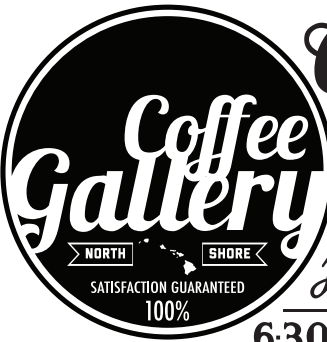
Science, Technology, Engineering, and Math (STEM) at Waialua High and Intermediate: You've heard about the Hawaiian Kids, the FIRST Robotics team? Joining the tech world of Robotics are members of the VEX teams, which include middle and high students and are under the direction of Ms. O'Neal and Mr. Lee, and the LegoRobotics Team, comprised of students from the Middle School, advised by Mr. Christopher Kawabata. Competition in the beginning of the school year began with the

VEX and Lego teams. Students are successful due to their efforts and hard work and guidance of teachers, parents and volunteers. Mahalo and read on!

As reported on the Robotics website by WHIS students: Bank of Hawaii Commercial: On Saturday, February 18, 2012, Team 359 journeyed to La Pietra Hawaii School for Girls. While there, The Hawaiian Kids got to find out what it's like to be in front of a camera as they were included in a video shoot for a local bank, The Bank of Hawaii. As well as the Waialua Robotics Team, there were other background actors and actresses to join them. The shoot was aimed at promoting local activities, including VEX and FRC Robotics. One of the shots showed several students troubleshooting a VEX robot, fixing the robot together, and then congratulating each other after they fixed the robot and made it work the way it should. The shoot lasted for several hours and over fifteen takes, but everyone had a blast and were glad to be a part of the commercial.

First LegoLeague: On December 3, 2011, Team 4075 "Hawaiian Kids" participated in the 7th Annual Hawai'i Championship at the Neal Blaisdell Arena. There were 56 teams from around Oahu and other outer islands.

EDLINE: Parents and guardians should log on to Edline to review students progress/grades. Students are able to log in to track their grades. If you need a log in code, please call Mr. Staszko at 637-8200.



Coffee!

You can sleep when you're dead!

6:30AM - 8:00PM
NORTH SHORE MARKETPLACE
WWW.ROASTMASTER.COM



NEW PADDLERS WELCOME

North Shore Canoe Club

Our recruitment season continues through June 1.
Come and join us Mondays & Wednesdays at 5pm
at Hale'iwa Beach Park across Jameson's restaurant.
Keiki paddlers practice begins Monday, April 2 at 3:30pm

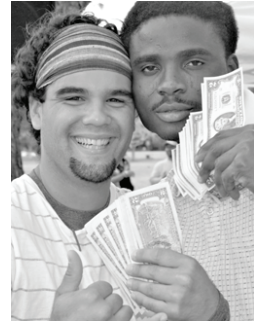
For more info call 753-7974
email: northshorecanoecub@gmail.com
www.northshorecanoecub.com
"Bring your Mana"

Our next service at Hale'iwa Beach Park

Sunday, March 25

We're the church that gives to you

Good food & fun at our
February 26 service.
Trish Coder photos.



SUNDAY SCHEDULE

8 a.m.-9:30 a.m.

Register for FREE give-aways

9 a.m.-10 a.m.

Sunday School for keiki 4-12 yrs.

9:30 a.m.-Pre-service give-aways

10 a.m.-12 noon Joyful Church Service
(10-minute sermon)

12 noon Celebration Feast/Food for all!

OUR 2012 SERVICE SCHEDULE

March 25 • April 29 • May 20

June 24 • July 29 • August 26

September 30 • October 28

November 25 • December 25

From anywhere on O'ahu take the Circle Island city bus to Hale'iwa Beach Park

First 500 to register will receive a free cash offering!

No church offering collected, instead, we give our money to you!

First 300 to register get a free bag of groceries.

10 FREE super-loaded grocery cart give-away.

FREE lunch for everyone at 12 noon!

Includes Uncle David Anana's local beef stew, fresh salad & much more!

• Bring a beachmat, lawn chair or blanket, and be sure to bring your appetite!

SURFERS, SAINTS & SINNERS ARE WELCOME!

OAMC is a community outreach made possible by many generous supporters and volunteers. If you would like to support or volunteer for the OAMC call 342-3969.

The OAMC is scheduled to meet on the last Sunday of every month (except May & December).

"There will always be poor people in the land. Therefore I command you to be open handed toward your brother and toward the poor and needy in your land." (Deuteronomy 15:11)

BULLETIN BOARD



Featuring the largest selection of certified organic produce on the North Shore. No panic...ours is organic. Open 7 days. Mon.-Sat. 9am-6pm. Sun. 9am-5pm

66-445 Kam. Hwy
Haleiwa, Hawaii 96712
Next to the Post Office
808-637-6729 • 808-637-1922 fax



DR. PORTER TURNBULL
Chiropractic Orthopedist
(808) 638-8740
Appointments available Mon.-Sat. (evenings by appointment)

- Industrial accidents & auto injuries
- Sports injuries • Spinal care
- Safe, Effective, and Gentle

N-C PLUMBING & SUPPLY

Cont. Lic. No. C-8913



- RESIDENTIAL & COMMERCIAL SALES & SERVICE
- CONTRACTING & DESIGN • HOME PLUMBING SERVICE
- PLUMBING FIXTURES, HEATERS • FREE ESTIMATES

Nestor P. Calilao (Owner) Bus: 637-8662
P.O. Box 769 Res: 638-5157
Waialua, HI 96791 Cellular: 372-8718
email: nncplumbing@hawaii.rr.com

When it's time to tie the knot...

www.hawaiiweddingminister.com

informal beach weddings a specialty

(808) 342-3969



SEAMLESS ALUMINUM & COPPER RAINGUTTERS

"Let Us Protect Your Castle"
John Manning, President
North Shore
Phone# 638-7246

HAIR SPECIAL

Full Highlight and Cut \$100.00

GINA WALKER

Hairdresser to the stars from Malibu, CA

Senior Stylist & Color Master
Now at our new location
North Shore Salon & Spa
in Haleiwa Town 808-375-3984

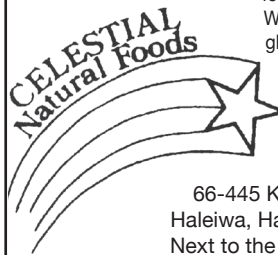
Munden Design & Build

Lic.#BC19632

Design • Plans • Permits • Construction
Additions & New Residences
808 391-8616

Providing quality work since 1978

Specializing in vegetarian foods, vegan foods, whole foods, organic food. Wheat free, dairy free, raw foods, gluten free. A complete selection of natural foods for 37 years. Make earth day, everyday.



Open 7 days.
Mon.-Sat. 9am-6pm.
Sun. 9am-5pm

66-445 Kam. Hwy
Haleiwa, Hawaii 96712
Next to the Post Office
808-637-6729 • 808-637-1922 fax

HOLOHOLO MOBILE SCREEN SERVICE



- *new window installation
- *new screens/re-screens
- *pet proof screens
- *jalousie repairs
- *porch enclosers
- *sliding/swinging screen doors
- *pet grills & doors
- *solar screens
- *screen door roller repair

FREE ESTIMATES
808-783-8764
www.OahuScreens.com

LIC. #AC 18275



COWPER CONSTRUCTION

GENERAL ENGINEERING CONTRACTOR

Full Service Sitework Contractor
Septic Systems & Tanks
25 yr. exp.
Michael Cowper 638-7200
cowperhawaii.com

BULLETIN BOARD



Restaurant & Margarita Bar

- DAILY SPECIALS -

Island Fresh Fish Tacos
Premium Margaritas

Large Parties Welcome Open Daily 9:30am - 9:30pm

637-3059 • North Shore Marketplace • Haleiwa
www.CHOLOSMEXICAN.com

NORTH SHORE AUTO SALON

66-540 Kamehameha Hwy., Haleiwa
(Right behind TESORO gas station)

Wash & Wax, Vacuums, Remove Waterspots
Interior Shampoos, Polish Rims, Polish Motorcycles, etc

\$5 OFF with this ad/ Package A thru E
(808) 779-3613

northshoreautodetailsalon.com

northshoreautosalon@yahoo.com

MultiTrade Handyman Service

Kitchen & Bath Renovations
Screens, Drywall, Decks, Fences
Laminate Floors, Ceiling Fans
Painting, Carpentry, Tile
Over 25 Years Experience
(808) 551-4783

Robert Snelling oahuhandyman@aol.com

ROB'S

autorepairservice

Robert Oakley
ASE Certified Master Mechanic
Computer & Electrical Specialist

Owner
Waiialua, Hawaii
(808) 330-0459

"THE BULLETIN BOARD THAT IS IN EVERYONE'S HOME"

The Arts return to Koga Theatre

By Julie Mansur

The Koga Theatre in Waiialua has been under renovation for several months and what a beautiful new life that old building will now have. Drive along Kaukonahua Road and look next to the Paalaa Kai Corner Store and Bakery and you will see that the former Oils of Aloha kukui nut factory has been transformed into a multi-use small business center. Spearheaded by the Scoops of Paradise ice cream store owners, a team of big hearted, hard-working people have made a new point of interest for North Shore residents and visitors.

Local artist and wood-carver Jay Marr of Jaymarrzart has taken the upstairs balcony space and created a lovely art center that includes art studio, gallery and space for classes. Large refurbished wood ceiling beams join 12 foot high walls and four picture windows. By day, the view looking out over Haleiwa's foothills leading up to the Koolau Mountains often includes a rainbow. By night, looking in through the windows, the lighting is golden and inviting. In fact, the loft space is also a great place to host a gathering or party.

Jaymarrzart includes carving tree branches into interesting figures and "brings dead wood to life," as Jaymarr says. He also has recycle art and repurposed items, which is in keeping with the effort to re-use

the old building. Arriving to the North Shore from the East Coast in 1980, the graduate of the Art Institute of Boston (by Fenway Park) never sat in the Koga watching once popular samurai movies. And his love for animals kept him busy with the Bow Wow Bungalow dog kennel business for the last ten years. But now that he has created a new home for his art, we can enjoy viewing or purchasing pieces, including a large wooden mermaid or a baseball player making a pitch, each carved into a treasure from nature. We can take a drawing, dance or yoga class, surrounded by the creativity of the new art center, while never leaving the peacefulness of the North Shore!





CLASSIFIEDS

The North Shore News is published every other Wednesday and mailed free of charge to all North Shore homes and businesses. Extra copies may be obtained at our office.

PRESS RELEASE POLICY: Submit press releases in person or by fax, mail or email to Editor, North Shore News, P.O. Box 1117, Haleiwa, HI 96712. Please type your releases and keep them shorter than 200 words unless they are of an unusual news interest. Releases should be viable news stories and are published on a **space available basis only**, with priority given to those received in our office first. You may attach photos. We are not responsible for the return of any photos. All materials are submitted at owner's risk. We reserve the right to edit and/or refuse all submissions including advertising.

EDITORIAL POLICY: We welcome articles and letters from our readers. Letters to the Editor are published on a space available basis only and preference is given to shortness of length, and quality of content. We prefer to run not more than one letter, per person, per 6 month period. Letters subject to edit.

Views expressed by our contributing writers and advertisers do not necessarily reflect the view of the management and staff of the North Shore News. All rights reserved. Reproduction in whole or part without permission is prohibited. © 2012.

PUBLISHER/EDITOR
RON VALENCIANA

TYPOGRAPHY
DOWNTOWN GENERAL STORE

BOOKKEEPING & CLASSIFIEDS
LINDA SEYLER

CONTRIBUTING WRITERS
RON VALENCIANA,
NATY HOPEWELL

STATE SENATOR DONOVAN DELA CRUZ
CITY COUNCILMAN ERNIE MARTIN
STATE REPRESENTATIVE GIL RIVIERE

For Advertising Rates,
call
637-3138

♥♥Need a minister for a North Shore wedding? Hundreds of knots tied for happy couples on Oahu. Simple beach-side ceremonies to formal church or chapel services. I'll make your special day an extraordinary memory. Call & leave clear message with phone number & possible date, time & place. 342-3969. Also: Vow renewals, house blessings, baby luaus.

PAUMALU ELECTRIC
David C. Hancock
638-9054 / Lic#C18074

SHORE ELECTRICAL SERVICE
New Const-Remodels
638-0049 / Lic#C20777

LGR Construction
Remodel • Repair • Design
Drafting • Painting • Small Jobs
Affordable rates. 343-4453/Lic#26759

Dog/Cat Nail Trimming
at your home only \$15.00
Call Julie 637-5395

Aloha Computer
PC Repair/Virus Removal
Fax/Copy/Internet Access
372-2667 or 237-4558

Lawn Care For You
Mowing, Trimming, Light Hedging
Call Thomas 637-5839

Ross McGerty BC24080
349-6359 • 637-9539

From Waiialua to Sunset
Make Me the First Call
for Home or Rental Repairs
or Renovations

EXPERT ELECTRICIAN
Fans, emergency services, etc.
Jim Richards 371-9369

PARADISE PLUMBING INC.
New Const • Repairs • Remodels
808-368-1473 / Lic. 29856

BEACH PLUMBING & ROOTER
Over 30 years experience
Call Larry 637-6400

Holoholo Mobile Screens
New Screens • New Frames
Screen Repairs • Pet Proof Screens
Sliding Screen Doors • Affordable Rates
Call Today 783-8764

Handyman Services
Remodeling, Carpentry, Floors,
Concrete, all parts of Construction
Call Bob "The nicest guy in the
business" Ph. 282-2812

Haugan Construction LLC
Build & Repair • Big & Small
Let's Talk
Steve 542-9269

Nutrition Expertise
Cooking advice & demos
Whole foods nutritionist
Crystal Bossola 954-9495

HARVEY'S REPAIR, LLC
24 hrs Towing Service
Specializing in opening
locked car doors
Call any time 478-0333

FRESH ZEN
Licensed Esthetics
Full body waxing • Natural facials
Spa Parties great for showers,
birthdays & fun
Waxing Special
Brazilian • Brows 40
497-3804 • gwnando@gmail.com

PAINTING
INTERIOR, EXTERIOR
FREE ESTIMATES
OAHU PRECISION PAINTING
LIC #31602
SKIP WUNDERLICH 220-9083

N.S. Property Maintenance
Power wash, painting int/ext,
deck repairs, extensions,
fences, gates,
carpentry & remodels.
Maintenance, lawn & yard.
Chris 381-5213/638-0659

BIKRAM YOGA
See our new studio, anti-
microbial, anti-bacterial
carpet and more!
Please call for class schedule
637-5700

North Shore Pumping
Cesspool & Septic Pumping
Complete Plumbing
Services, new & repairs
Lic. & insured #25567
638-0900 • 291-5089

B.E. CONSTRUCTION
Dumptruck & Backhoe
Services
Equipment, dirt, rock,
green waste hauling
in and out
DEMOLITIONS
BRUCE ESCHE 783-9510

SHIATSU • LOMI
Aromatherapy
Milica Barjaktarovic
Lic # MAT8348
351-0848
HumanRemodeling.com

SEPTIC SYSTEM
QUESTIONS?
Free Initial Consultation
Bear Engineering
Nathan M. Toothman P.E.
(808) 754-3579
www.BearEng.com

ANGELS
PLUMBING
Repairs
Remodeling
Renovation
638-7878
Lic. #C12004

Next Issue - April 4, 2012
Deadline Date-March 22, 2012

SUBSCRIPTION RATES

If you live outside the North Shore area on Oahu, neighbor islands, or the mainland, you can subscribe to the North Shore News. Our annual subscription rate is \$35 for 25 issues delivered by standard bulk mail (2-3 weeks), or \$55 for 25 issues delivered by first class postage (3-5 days). Call our office for payment information at (808) 637-3138.

HOW TO CONTACT THE NORTH SHORE NEWS

Letters to the Editor, and other items submitted for publication consideration may be sent to us via:

MAIL: P.O. Box 1117, Haleiwa, HI 96712

E-MAIL: NShoreNews@aol.com

FAX: (808) 637-8862

PHONE: (808) 637-3138

CLASSIFIED ADS

hawaiiweddingminister.com
342-3969
 31 years experience

Offshore Plumbing, Inc.
 Commercial • Residential
 • Septic • Solar • Design
 Mike 630-1407
 Steve 371-3451
 Lic #C28113
 Fax 638-9022
 offshoreplumbing@yahoo.com

BOBBY'S BODIES
 Tuesday evenings at 5:00 p.m.
 • Body Toning
 Friday mornings at 9:00 a.m.
 • Cardio Pump/Fat Burner
 For more info: call Bobby, owner of BOBBY'S BODIES at 637-4150

Lisa Carley Skin Care
 637-9400
 lisacarley.com
 67-292 Goodale Ave. #104
 Waialua Shopping Center

Your Clean Home
 Specializing in residential/vacation homes & property management. Experienced/reliable and affordable. Green cleaning safe for your family and our planet!!!
 808 638-0262 or 779-6604

THE LAWN RANGER
 Lawn Maintenance
 no yard too hard
 no lawn too far gone
 We mow betta
 258-6439 Dan Fatchett



Marianne Abrigo, Properties
 Specializing in - North Shore Real Estate
 Ask for our list of available properties and/or a free market analysis.
Marianne M. Abrigo
 "Realtor since 1974"
 Office 637-3511
 Fax 637-0777
 Email mabrigo222@aol.com

North Shore Tax Preparation
 40+ experience, Enrolled Agent Individuals, E-file, direct deposit Call Jeannine Poling 638-5130

GERMAN CAR SERVICE
 Professional-Qualified Technician
 Call Gary 637-6800

BOW WOW BUNGALOWS
 Licensed Boarding Kennel North Shore, Oahu Reasonable Rates
 Ph. 637-2562
These Dogs Have Fun!

HELP WANTED

BUSSERS/SERVERS
 Pizza Bob's in Haleiwa is looking for BUSSERS/SERVERS. Experience preferred. Apply in person at 66-145 Kam. Hwy.

COOKS/KITCHEN HELP
 Pizza Bob's in Haleiwa is looking for kitchen personnel. Experience preferred, but will consider training the right people. Apply in person at 66-145 Kam. Hwy.

Retail Sales Surf & Sea
 Hawaii's Ocean Sports Headquarters is always looking for hard working, energetic people to become a part of our sales team. Good pay, bonus, benefits. Ocean sports experience and/or bilingual a plus. Apply in person daily 9am-7pm
 62-595 Kam. Hwy., Haleiwa

Now Hiring:
Part-Time Front Counter/ Light Prep Position
 Please email resume to pupukeagrill@gmail.com or drop off resume at the Pupukea Grill Lunchwagon during business hours (Thurs.-Mon. 11am-5pm)
 No phone calls please

Don't throw away that old BIKE!
 Donate it to Yikes Bikes
 A non-profit program at Waialua High & Intermediate School
637-8200
 M-F • 8 a.m.-3 p.m.

FOR SALE
 Chihuahua Pups
 2 mates 1 blk, 1 brn, 2 mos.
 \$400 ea.
 282-3531

2000 Ford Mustang Convertable
 72k miles. Silver body, black top, 5 speed. Excellant condition \$3500. Call 342.3969.

AKC Russian Wolfhounds BORZOI pups 6m/3f
 kawailoaborzoi.blogspot.com
 808-447-9349

MISCELLANEOUS
 Free Tupperware
 Have A Party! & Have Fun!
 372-4029 Brenda

TAP DANCING
 monday 6:30 p.m.
 great fun, great exercise, and great for the gams!
 north shore art center
 more info 637-2562

REUNIONS
 The NSN is happy to publish your school or family reunion Free of charge.
 Email your announcement to NShoreNews@aol.com.

OFF da ISLAND
 Are you leaving Oahu on vacation or business? Do you live on a neighbor island, the mainland or foreign country and subscribe to the North Shore News? Try send us a photo of someone in front of a sign or landmark holding a copy of the NSN. Email your photo along with the person or persons' name, community of residence, telephone number and photo location to: NShoreNews@aol.com. Or, mail to OFF da ISLAND Photo, North Shore News, P.O. Box 1117, Hale'iwa, HI 96712. We cannot return photos so please send us a copy. Photos received become the property of NSN. Preference and priority will be given to emailed photos.



Keep it Country
 To report **ILLEGAL VACATION RENTALS**
 call 768-8159 or 768-8118
 You will remain anonymous
Illegal Vacation Rentals are ruining the North Shore
 www.savenorthshoreneighborhoods.com

Business Services Center
 Fast & convenient fax, copy, scan, computer/internet, laminate, etc.
 Across from Haleiwa post office.
 North Shore Chamber of Commerce
 637-4558 or 342-8557

North Shore Farmers Markets
 Haleiwa: 9 a.m. to 1 p.m. Sundays, at traffic signal on the old Kamehameha Hwy at the bypass road.
 Waialua Sugar Mill: 8:30 a.m. to noon Saturdays & Wednesdays 4:40 p.m. to 7:00 p.m.
 North Shore Country Market: 8 a.m. to 2 p.m. Saturdays, Sunset Beach Elementary School, 59-360 Kamehameha Hwy.
 Laie: 11 a.m. to 2 p.m. June 24, July 8 and 23, Brigham-Young University-Hawaii, 55-220 Kulanui St.

Art Classes for everyone
 at North Shore Art Center and Jaymarzart Gallery
 Come Play and Come Teach weekly classes adults/children learn any medium, your style, your pace oils, pastels, water colors, fiberarts, clay, mosaics and more!!!
 Book at ART PARTY adult or children.
 For more info call jaymarr@637-2562

IGREJA EVAN. BRASILEIRA
 Domingos 10:00 am
 Quartas 7:30 pm
 Sextas-Culto de Oraçao 7:30 pm
 Voce e o nosso convidado especial
 Behind Hale'iwa Post Office 637-5566
 Pastor Luiz • 638-2212

BEACH CLEAN UP
 Chun's Reef - 10 a.m.
 637-2211
 Last Saturday of every month
 adoptabeachhawaii.org



MALAMA MARKET HALEIWA:
OPEN DAILY 7 AM-9 PM
808.637.4520

MALAMA MARKET MAKAKILO:
OPEN DAILY 6 AM-10 PM
808.672.9955

Valid Dates:
3/21/12-3/27/12

Strawberry
16 oz. **2/\$7**



Shin Mai Calrose Rice
20 lbs. **\$9.99**



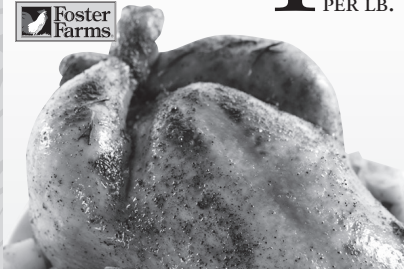
Aquafina Water
24/500 ml. **\$4.99**



7Up, Sunkist, Sun Drop, A&W, or RC Cola
Selected Varieties,
12/12 oz. **\$4.79**



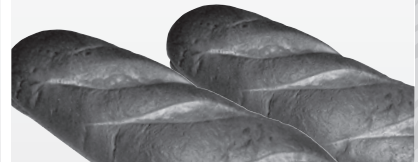
Fresh Whole Chicken Fryer
\$1.49 PER LB.



Lay's Potato Chips, Kettle Chips, Baked! Chips, or Tostitos Tortilla Chips
Selected Varieties,
8.5-13 oz. **2/\$6**



Fresh Baked French Bread
\$1.99 EACH



Extra Large Shrimp, 26/30 ct.
Previously Frozen **\$7.99** PER LB.



Tide Liquid Laundry Detergent or Gain Liquid Laundry Detergent
Selected Varieties, 50 oz. **\$6.99**



8 Piece Fried Chicken
2 Thighs, 2 Breasts,
2 Drumsticks, and
2 Wings **\$8.99** EACH



Pepsi Selected Varieties, 2 ltr. **4/\$5**



Tide Powder Detergent
Selected Varieties, 56-57 oz. **\$10.99**

Dreyer's Ice Cream
Selected Varieties,
48 oz. **2/\$7.50**

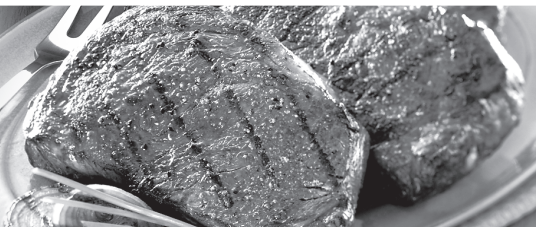


Budweiser, Bud Light, Coors, Coors Light, or Miller Lite
30 Pk. Cans **\$23.99**



THURSDAY

INCLUDES:
7-8 oz. Steak
Rice • Tossed Salad • Drink



Grilled Steak LUNCH
\$6.99

Hawaii Beverage Fee of 1¢ per can or bottle will be added to purchase price at checkout. An additional Hawaii Deposit fee of 5¢ will be charged for all specially marked beverage containers.

Limit five units (mix/match) per purchase, unless otherwise specified. We reserve the right to limit quantities. No sales to dealers. Prices plus applicable state tax. Hawaii EBT cards welcomed.