



"E Ala Na Moku Kai Liloloa"



"Polo in Paradise"
Hawaii Polo Club
Season 2014
see page 9



NORTH SHORE NEWS March 19, 2014 VOLUME 31, NUMBER 6



On Saturday, March 8, 2014, City Council Chair Ernie Martin and Councilmember Carol Fukunaga held a dedication of a Memorial for Bill and Peggy Paty. On August 17, 2011 the City Council passed a

resolution to rename a portion of Kaiaka Beach Park in honor of Bill and Peggy Paty as a well deserved recognition of their perseverance and their vision to save the area as a public treasure. Pictured above are

Bill Paty with the beautiful wood carving by local artist Jay Marr. The Bill and Peggy Paty Kaiaka Beach Park is more than a tribute to the Patys; it is also a sincere "Mahalo" from the entire North Shore community. Photo by Laura Figueira.

PRE-SORTED STANDARD U.S. POSTAGE PAID Honolulu, Hawaii Permit No. 1479	Hale'iwa, HI 96712 66-437 Kamehameha Hwy., Suite 210
--	---

PROUDLY PUBLISHED IN
Hale'iwa, Hawai'i
Home of the
Happiest Seaside Town



Off da Island in Paris, France

Sunset Beach residents Janet and Henry Larrucea recently took a trip to Paris, France. They are pictured here at the “Chateau de Versailles” The Palace of Versailles. When they are not touring the grounds of the palace, they can be spotted reading the North Shore News to remind them of the good times back on Oahu’s beautiful North Shore. For more information on the Off da Island campaign turn to page 23.

If you would like your business or organization featured on the cover in the “Proudly Published in Hale’iwa Hawai’i Home of...” box, send an email to NShoreNews@aol.com with your information.



Origens Counseling Services, LLC

Genotra D. Brown, MSCP, LMHC
Licensed Therapist

Individual and Family Therapy—Mood/Anxiety—Depression—PTSD
Couples Counseling—Adolescent Therapy
Secure e-Therapy/Skype Sessions Available

Phone: 808-664-3874 66-590 Kam. Hwy, Suite 1C2
www.origenscounseling.com Haleiwa, Hi. 96712

The Hale’iwa Family Dental Center, Ltd.



presents
“Comfort Dentistry”
including—

- Relaxation Glasses
- Television Glasses
- Caring Staff
- Special Medication to help you relax
- Laser Cavity Detection
- New Patients Welcome!

Your teeth are much too important to neglect.

Call: 637-9652
for your reservation

We’re conveniently located behind First Hawaiian Bank
in the heart of Hale’iwa.

66-037 Kam. Hwy., Ste. 3
Haleiwa, next to Growing Keiki

Saccoccio & Lopez

ATTORNEYS AT LAW
Serving Haleiwa since 1984

*Bankruptcy
Personal Injury • Criminal Law
Landlord/Tenant
Traffic Offenses • DUI*

Family Law
*Adoption • Custody • Divorce
Paternity • Guardianship
Deeds, and Wills*

Notary Public



637-7611

VISA/MC Accepted

Paul & Nita

BALI MOON

GUDANG HAWAII

Discover our Treasure Trove,
just minutes from Haleiwa.

WAREHOUSE

Easter Weekend

CLEARANCE

MARCH 22ND-23RD, 2014

VISIT OUR NEW WAREHOUSE LOCATION

66-935 KAUKONAHUA, WAIALUA, OLD OILS OF
ALOHA BUILDING, NEXT TO PAA'LA KAI BAKERY
LARGE INVENTORY OF BOAT WOOD, TABLES, CHAIRS
AND LOTS OF TEAK AND MAHOGANY FURNITURE
~ MAHALO FOR YOUR SUPPORT AND PATRONAGE ~



Come by and visit us on the NorthShore; we are here to listen and help you to furnish your home, create custom furniture according to your vision, or simply assist you in finding the perfect souvenir for the loved ones at home.



VISIT US ONLINE: WWW.BALIMOONHAWAII.COM

66-935 Kaukonahua. Wailua. balimoon1@aol.com. 1.800.663.0378 or 808.637.0012

WE ARE FULLY STOCKED: RUGS, FURNITURE, HOMEWARE + MORE



In loving memory of Pat Johnson



Born November 23, 1949
Passed on February 24, 2014

Memorial service at Ali'i Beach Park on March 23, 2014 at 2pm. Friends & family invited from 1pm onwards. Please bring food & drinks; music will be provided. At 4pm a procession of boats will travel to 'Pat's Place' off the Waialua Coast where her ashes will be given to the sea. If you have a boat or water vehicle you are most welcome to join us.

Nothing is more beautiful than a mother, no matter what commitments capture the energy and attention of most, a true mother has one commitment above all others, to love and protect her children. When a mother expands that love to virtually all she comes into contact with, you have a mom like mine. All who really knew Pat will affirm this, she truly cared for them, she listened to them, she allowed them to make mistakes, including betrayal, and like a mother with a misbehaving child (I should know), she would always be willing to forgive such transgresses and simply love them again. The truth is my mom was a mom to a lot of people, and I see those who received her motherly love like brothers and sisters.

Most will remember my mom dutifully on watch in her dive shop Deep Ecology, but Deep Ecology was much more than a business for her. My mom literally lived and died for Deep Ecology, her spirit, her legacy, is connected to it forever and it is my intention to preserve that legacy to the best of my ability. So in this time of mourning... and celebration, we ask that all who were touched by Pat to pay their respects by maintaining her loving spirit and thus preserving her legacy in the most meaningful way possible.

My mothers last great gift to me was to come to my home in London for one month just 12 days before she passed on. In that time she met her youngest grandchild for the first time. She bonded with both of my son's and saw cherished family in England and Ireland as well as spending quality time with her loving 25-year partner Bill. It is clear to me now that she knew her time was short and knowing this, she made sure to share once more her love with those who loved her most. Everyone who saw her upon her return said she was never happier, "on cloud nine." And that is my mom for you, as loving in life as she undoubtedly is from the after-life.

Your loving son,
Ken Nichols O'Keefe





Council Chair
Ernie Martin
Serving You in District 2

Putting our Families First

It is no surprise that a majority of our residents believe that the city's homeless problem has gotten out of hand. Most feel the homeless problem affects their quality of life by crowding our beaches, parks, and sidewalks. To make matters even worse, there is mounting evidence that the problem discourages visitors from returning to Hawaii.

The latest 2013 Statewide Homeless Point-in-Time Count reports there are over 4,500 homeless individuals in Honolulu, about one-third on the streets and the rest in shelters. More than half of these individuals were counted as a family with one adult and at least one child under the age of 18. The University of Hawaii's Center on the Family reported that, of the clients tracked in homeless service programs, over 3,000 clients were under the age of 18 and over 1,700 were under the age of five. These statistics are surprising because most of the homeless visible on the streets are chronically homeless adults suffering from mental illness, substance abuse, or both. Hidden is the fact that nearly a quarter of our homeless population are children.

In 2012, the State implemented the Housing First Initiative, a program which has been implemented in cities across the nation. This program takes chronically homeless adults off the streets and places them in housing without any preconditions. They are provided a full range of support services until they are able to move into permanent housing. Meanwhile, unemployed poor and low-income families continue to struggle with much less assistance or no help at all.

I believe that Honolulu would be better served by putting "Families First" and devoting more of our resources toward stable housing for the large number of homeless children and youth. We need to reassess our housing strategy and shift our policies to first helping our needy families and the working poor. Yes, we must still commit to providing a decent level of services to the chronically homeless, but we must face the reality that many of them will never become self sufficient.

In his FY 15 budget, the Mayor has proposed to spend millions of dollars on Housing First, hoping to clear our streets, parks and other public places of the telltale tents and shopping carts. He contends that Housing First will be able to offer assistance to families as well. Prior to 2010, federal support for "chronically homeless" was limited to unaccompanied individuals. To meet the definition of

"chronically homeless" today, a family has to have an adult member with a disabling condition and has been continuously homeless for one year or more, or has had at least four episodes of homelessness in the past three years. While this is a step in the right direction, it still diverts critical housing assistance away from the population where a helping hand can result in a productive and lasting change for the better.

It is time to shift our priorities and first provide housing for the most vulnerable of our society, the working poor. With decent housing, their children may have the means to escape the cycle of poverty. Affordable housing for low income families is the most significant assistance government can provide, both short and long term. I am certain of this as I grew up in public housing and it made a tremendous difference in my life. I would like the city to put the bulk of our housing assistance where it can do the most good for the most people. Putting families first can save the lives of children now in temporary shelters or on the street and give them a reason to hope for better days ahead.

Representative Lauren Matsumoto
District 45
Invites you to
The WAIALUA AREA COMMUNITY MEETING
Monday, March 31, 7:00 p.m. to 8:30 p.m.
Waialua Elementary School Cafeteria



Come over and say hello to Ms. Snow Puffy's sassy North Shore cousin named Cinnamon Finger Puff!

Preliminary introduction was done via a taste test on Sunday, March 9th which triggered raves from many of our Snow Puffy fans. Everybody just loved the Cinnamon Puffs or was it the Cinnamon Fingers or maybe, could it have been the

FINGER PUFFS?

ALL ABOUT Miss Cinnamon Finger Puff:

- Banana size fingers
- Light, airy, distinctive cinnamon flavor
- Custard filled
- Butter brushed
- Streak of chocolate
- Almond sprinkled chips
- Refreshingly cool
- Not too sweet, not too cold, but heavenly smooth!
- Finger-licking good!
- Available starting March 12th and only on Tuesdays, Wednesdays and Thursdays

CHECK IN ON YELP FOR A SPECIAL MISS CINNAMON FINGER PUFF DISCOUNT



HAWAIIAN ELECTRIC COMPANY PRESENTS

THE 7TH ANNUAL GROW HAWAIIAN FESTIVAL

CELEBRATE HAWAIIAN CULTURE – NATIVE PLANTS – SUSTAINABILITY

Saturday, April 5, 2014

9:00 a.m. to 3:00 p.m.

Bishop Museum • 1525 Bernice Street, Honolulu

Free admission for kama`āina and military with valid ID

Special presentation: Beekeeping in Hawai'i

Lei making – woodworking – kapa printing – weaving

Native plant sale – farmers' market – local products

Learn about clean energy – conservation – electrical safety

Enjoy games – keiki activities – Hawaiian-style food

Music by Nā Hōkū Hanohano award winners Nā Hoa and Holunape

For event details call 543-7511 or visit www.hawaiianelectric.com/growhawaiian



**Hawaiian
Electric**



BISHOP MUSEUM

MAHALO!

from the

North Shore Food Bank

The North Shore Food Bank distributed 6500 plus food bags in 2013! Thank you for all your support and donations, you are appreciated.

The North Shore Food Bank distributes food bags every Wednesday at the Hale'iwa gym from 9 a.m.–12 p.m.

Donations of non-perishable canned foods can be dropped off at the North Shore News office (above the Hale'iwa Post Office).

If you would like to contribute financially checks can be made out to:

Once A Month Church

P.O. Box 117

Haleiwa, HI 96712

For more information call 637-3138

Sponsored by North Shore News & Once A Month Church
501c3 non-profit



WAIMEA VALLEY
WHERE HAWAII COMES ALIVE



3rd Sunday Every Month

LĀ 'OHANA FAMILY DAYS

50% Off General Admission
for our Kama`aina & Military!
Plus cultural activities, artisans,
Hawaiian games, and more



Join Us in Welcoming

HAWAIIAN HIKING COMPANY & NORTH SHORE ECOTOURS

Explore the Valley like never before!
Visit waimeavalley.net for dates and availability



Every Thursday, 3 - 7 PM

HALE'IWA FARMERS' MARKET

The North Shore's largest and most diverse farmers' market featuring locally-made products, food, and music

On the North Shore across from Waimea Bay
Open 9 AM - 5 PM Daily • Call: (808) 638-7766
WAIMEAVALLEY.NET



State Representative
Richard Lee Fale
Serving You in District 47

An Opportunity to Save Conservation Land and Improve our Schools

There are many issues that divide our community but also many that can bring us together. The current negotiations between the State and Turtle Bay offer an opportunity for our rural community to receive the necessary financial resources to improve infrastructure, especially in our schools, by using a source of income that already exists in our community. Moreover, in doing so, we can preserve more than 600 acres of undeveloped land around Turtle Bay Resort for generations to come.

At the heart of the negotiations is the State's approval of two new hotels at Turtle Bay Resort, which the State estimates will generate approximately \$8 million to \$12 million annually. While the new hotels remain unpopular with some in the community, they give the State a fiscally responsible opportunity to pay for the purchase of conservation lands around Turtle Bay by providing a way to pay back the general obligation bond the State will need to purchase the conservation lands.

We have an opportunity to maximize community benefit from the resources within that community and also offer a fiscally responsible and self-sustaining source of funding to improve infrastructure, especially in our schools. Estimated annual revenue of \$8 million to \$12 million could yield a bond of up to \$150 million. The Governor is requesting \$40 million to conserve acreage around Turtle Bay, meaning we could take up to an additional \$110 million for the educational and infrastructure needs of our community, particularly the Waialua and Kahuku School Complexes.

I introduced House Resolution 43 (HR43) and House Concurrent Resolution (HCR62) asking the

Governor to issue a larger general obligation bond and use the extra money for infrastructure improvements in our community, particularly in the Waialua and Kahuku School Complexes. I have begun discussions with the Governor's office, the Department of Education, the State House Finance committee chair and the State Senate Ways and Means committee chair, Senator Clayton Hee's office, the North Shore and Ko'olauloa Neighborhood Boards, as well as the various community associations and school principals. I welcome your feedback and hope you'll consider supporting this concept, which can be a solution that allows us to be fiscally responsible, preserve open space, and fund much needed school infrastructure. Please contact our office at 808-586-6380 or at repfale@capitol.hawaii.gov. Mahalo!



NEW **TRY OUR NEW**
Cinnamon
Finger Puff



DEBUT SPECIALS



Buy a doz Sada's Malassadas and get 1 FREE Cinnamon Finger Puff
Buy a doz Snow Puffies and get 2 FREE Cinnamon Finger Puffs
Buy 5 Cinnamon Fingers and receive a 5% DISCOUNT
"Da Best" Buy 10 Cinnamon Fingers and receive a 10% DISCOUNT

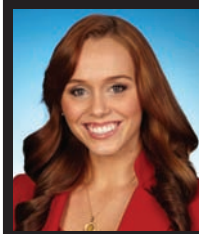
Offer good from March 19th to April 1st . . . and remember they're only available weekly on Tuesdays, Wednesdays and Thursdays.

SIX SPECIAL NIGHTS

MONDAY \$2.95 BEER BOTTLES & DRAFT	TUESDAY \$5.00 OFF PIZZA REGULAR OR LARGE	WEDNESDAY SALAD NIGHT 1/2 OFF SALADS
THURSDAY \$3.95 NIGHT \$3.95 SLICES, SALADS, MAI TAI'S, WINE & BEER	PIZZA BOB'S	SATURDAY \$4.50 NIGHT \$4.50 SLICES, SALADS, MAI TAI'S, WINE & BEER

FRIDAY NIGHT \$7.50 BURGER & FRIES
Dine In Only - 4:00 PM Until Closing - Haleiwa Town Center - 637-5095

\$2.00 Off with this Coupon
Some Restrictions Apply. See Restaurant for Details.
When Ordering Regular Priced Items. Good Anytime. One Coupon Per Person.
Can Not Be Combined with Other Discounts. Expires 06/30/2014.



**Representative
Lauren
Matsumoto
Serving You in District 45**

Aloha Neighbors and Friends!

We are approaching the midway point of the 2014 Legislative Session! The Legislature just finished the First Crossover, where bills originally introduced in the House moved to the Senate, and the Senate Bills entered the House. You can find these bills and keep track of the ones that interest you by visiting the Hawaii Legislative website at Capitol.Hawaii.gov. As the Legislature heads into the second portion of the Session after First Crossover, please continue to stay connected and informed about current measures migrating through the process.

While there has been much activity at the Capitol this Session, it has also been a busy time in the community, full of exciting events that I am privileged to be a part of! I've had the opportunity to interact with keiki through visiting elementary schools in my district, and recently my most rewarding experience was the Dr. Seuss Read Across America program. Witnessing the delight and excitement in the faces of the keiki made my visits very worthwhile and inspiring. A bill to note is HB 1596, which is an educational measure that would establish a statewide literacy program.

Working with high school students, our next generation of leaders, is always exciting for me, and seeing our dedicated high school students excel reinforces my optimism for Hawaii's future. I recently participated as a judge in the Central School District level of National History Day and the Hawaii Future Farmers of America competitions, both of which gave me insight into how academically promising this generation of students really is. One of the House Bills which I strongly support is HB 2008, HD 1, which will continue the financial appropriation for FFA programs in our public high schools.

Participating as a panelist at the Central School District Secondary Student Conference revealed the depth of interest and determination of our students to become informed and involved in their local government. The Secondary Student Conference enables students in grades 7-12 to identify, discuss, and arrive at recommended solutions to major youth problems. The emphasis is on school problems that require the attention and joint action by students, the Board of Education, the Department of Education, and the Legislature. Another bill to note is HB 1797, which would provide Hawaii's public high school seniors with information on voter registration and voting. My sincere and heartfelt congratulations to all who participated in the competitions, and my genuine

appreciation to those many people who mentored, coached, and supported our students! I am always elated to see young people involved in activities. While I strive at the Capitol to pass legislation that benefits my community, being a part of events like these provides me with opportunities to interact with and better understand the people of my district and my state.

My office is in frequent contact with the Department of Education project management team responsible for the Waialua Elementary School Library. Work is progressing according to schedule for the much anticipated occupancy and opening of the facility this Spring. I will continue to monitor progress on this project until Waialua Elementary School's young scholars are able to enter and use their new library.

Staying connected with our community is of the utmost importance to me and I invite you to my Community Meeting. The Waialua Area Community Meeting will be held the evening of Monday, March 31, 2014 at the Waialua Elementary School Cafeteria. Please save the date to join me, and watch your mail for my reminder postcard with all the details!

It is my honor and privilege to serve you, and the entire State of Hawaii, as a State Representative. Please feel free to contact me at (808) 586-9490 or at RepMatsumoto@Capitol.Hawaii.gov. Also, please take time to visit me at RepMatsumoto.com to sign-up for updates on issues you care about. Mahalo!



Polynesian Treasures

Hawaii's largest selection of Polynesian handicrafts and Hawaiian inspired gifts.

North Shore Marketplace * Haleiwa, Hawaii
Open daily from 10 am * (808) 637-1288

ROBERT M.

PAGAN CONSTRUCTION COMPANY

(808) - 499 - 8617

New construction / Additions / Remodels - Lic # 32866 Bonded / Insured
www.robertpaganbuilders.com



HAWAII POLO CLUB

SEASON 2014

“POLO IN PARADISE”

OPENING DAY

SUNDAY, APRIL 6

DILLINGHAM FIELD

MOKULEIA

Swim, Picnic
Gourmet Food

Tailgate, Live Music
Cocktails By The Sea
Dancing Til Dusk

Skydiving by
Skydive Hawaii

Gates Open at 12 noon - Polo at 2pm

\$10 General, \$8 Military w/ I.D., \$25 Clubhouse Reserved

For Information Call 738-POLO

Brought To You By Equus Hotel

Waikiki's Premiere Boutique Destination



Pitch Hit & Run Competition on March 22nd

Waiialua Little League is pleased to invite boys and girls, ages 7 to 14, to participate in the 2014 Pitch, Hit and Run Competition, free of charge, at Waiialua District Park, on Saturday, March 22, 2014. Registration begins at 9 a.m. and competition starts at 10 a.m.

Players score points based on their pitching accuracy, hitting off a tee for distance and accuracy, and base running speed. Pitch, Hit and Run, Presented by Scott's, is the official skills competition of Major League Baseball.

Individual Skill Champions and All-Around Champions for boys and girls in four age groups advance to additional levels of competition, which culminate in the National Finals during 2014 MLB All Star Week. In 2013, two Waiialua players, Joshua Moniz and Blazen Benz, advanced to the Team Competition at Dodger Stadium in Los Angeles, California.

All participants must bring a copy of their birth certificate and have their parent or guardian complete a registration/waiver form prior to competing. Eligible player birth dates are from July 18, 1999 to July 17, 2007. The registration/waiver form can be downloaded and more information is available at www.eteamz.com/waiialuaLL

North Shore Community Conversations

Senator Clayton Hee (District 23-Kaneohe to Kūnia) is pleased to announce the second "North Shore Community Conversations" meeting on Saturday March 22, 2014, 12:00 p.m. – 2:00 p.m., at the Sunset Beach Recreation Center, 59-540 Kamehameha Hwy., concerning North Shore beach management planning and Laniakea/Chun's Highway realignment efforts. The community is invited to participate in a discussion and planning workshop with Senator Hee, experts from the University of Hawaii Sea Grant Program, and fellow community members. Light lunch will be provided. The event is co-sponsored by the Sunset Beach Community Association and UH Sea Grant. Senator Hee has introduced two bills advancing through the State Legislature—SB3035, which addresses Kamehameha Highway realignment at Laniakea/Chun's and SB3036, which proposes a North Shore Beach Management Plan to address erosion and coastal shoreline protection. For further information contact Joe Farber at farberj@hawaii.edu. Stay updated via Facebook: <https://www.facebook.com/northshoreconversations?ref=hl>. Hope to see you on March 22!




BANZAI PRODUCTIONS

**Video - Media
Need Web Video
Ask About Our
Special Rates**

808-781-2535

SALON LA SIRENA

Owner Gina Walker
Haircut, Highlight and Color Specialist
Hairdresser to the Stars from
Malibu, CA. 20 yrs. experience.

Call for a free consultation
Shop 637-6869
Cell 375-3984

KUA AINA



The Best!

· IN HALEIWA ·
637-6067

· IN HONOLULU ·
591-9133
AT WARD CENTRE

HALEIWA · TOKYO · HONOLULU · LONDON

Wyland Foundation and Monk Seal Foundation hosting art contest

All Students Grade K-12 are Eligible to Create Hawaiian Monk Seal Artwork March 24- April 11, 2014 – The Wyland Foundation is teaming up with the Monk Seal Foundation to host the first ‘Conservation through Art’ contest. The theme is the critically endangered Hawaiian monk seal, Hawaii’s state mammal. The contest will be offered to all students in public and private schools in grades K-12 and will start on March 24th. This is an exciting opportunity for children to display both their artistic talent and ocean awareness to one of the world’s leading environmental artists, Wyland.

Students will create ‘The Hawaiian Monk Seal, a living treasure’ through paint, drawing, collage or sculpture. Art mediums can include: chalk, charcoal, clay, crayon, marker, paint, pen, pencil or watercolor. The students will register and submit their original artwork online at www.monksealfoundation.org/artcontest. One winner from each grade will be selected by a panel of artistic judges including Wyland himself! An overall ‘best of show’ winner will also be selected for a total of 14 winners. Winners will be announced in late May and each will receive prizes and awards.

The goal of the contest is to engage and inspire students to learn more about the Hawaiian monk seal and its unique role in Hawaii’s ecosystem. Endemic only to Hawaii, they have existed in the archipelago for 13 million years but their population is at a critical low 1,100 seals. The seals face diverse threats, such as

entanglement in marine debris, human disturbance, food limitation, shark predation, infectious diseases and habitat loss. This is a pivotal time to save the monk seals from extinction, as their population is still at a recoverable size. The Wyland Foundation and the Monk Seal Foundation both believe that there’s no greater place to start conservation efforts than with public awareness and education. This seal species is a ‘living treasure’ and its fate hinges on support from the local community and future generations.



About the Monk Seal Foundation

The Monk Seal Foundation is a Hawaii-based nonprofit organization dedicated to the preservation of the critically endangered Hawaiian

Monk Seal. The Foundation collaborates with local communities, volunteers, government agencies, nonprofits, and other stakeholders to protect the seals, as well as engage in important public outreach and education initiatives.

About Wyland Foundation

The Wyland Foundation, a 501(c)(3) non-profit organization, is dedicated to promoting, protecting, and preserving the world’s ocean, waterways, and marine life. Founded in 1993 by renowned environmental artist and conservationist Wyland, the foundation encourages environmental awareness through education programs, public arts projects, and community events. Learn more at www.wylandfoundation.org.



10% OFF
Your First 60 Min Full Massage
 Includes Neck, Head, Shoulders, and Back

66-437 Kamehameha Hwy.
 Suite 101A
 Haleiwa, HI 96712
 (Next to the Haleiwa Post Office)
 (808) 366-1308

Call for an Appointment
 Walk-ins Welcome

OPEN 7 DAYS A WEEK

MAE #2890

No job too big or small.
 Located at the Waiialua Sugar Mill.



fab ab
 808

**CERTIFIED WELDING
 FABRICATION & REPAIRS
 OF ALL METALS**

628.8719

Hibiscus Kokiohe

By David Orr, Botanical Collection Specialist

Conservation projects are happening throughout Waimea Valley and can be both rewarding and challenging. One of our conservation targets is the rare Nioi, *Eugenia koolauensis*, an endangered species in our neighborhood which is threatened by a new alien invader, an airborne fungus called 'ohia rust. If you've gone hiking recently and can no longer find tasty rose apple fruits, this is why. This non-native tree was wiped out by the new rust. Someday soon we hope to grow healthy specimens of the Nioi with other natives in our recently-built 15 acre pig-fenced enclosure in upper Waimea Valley.

Another restoration project in the Valley addresses the often-flooded estuary, and acres of our native sedge, *Ehu'awa*, which is being planted for erosion control. These are "macro" conservation efforts to improve the natural ecology of our ahupua'a. The plants we use to restore our native forest are seedlings from existing aged trees and plantings from tough indigenous natives, which serve to stabilize soils and also to provide "nurse plants" or over story for rarer plants in need of protection.

Restoration is being attempted throughout the state. Many who are involved in restoration efforts find it difficult to reintroduce natives to areas which have had their soil structure changed by decades of weeds, especially nitrogen fixing legumes such as *koa haole*. There's much to learn about the symbiosis between roots and their associated native fungi which may be gone in many areas. Its trial and error for some species we are trying to reintroduce and we hope others will learn from our mistakes and successes.

We grow many rare native plants in the gardens of the lower Valley, especially members of the hibiscus family for which our relatively dry climate is ideal. Every Hawaiian variety and subspecies of hibiscus is in our collections, as is every native genus in the family. Waimea's loulou collection is one of the best in the state. Our unusually large exotic plant inventory is what draws many plant lovers to Waimea Valley. One reason our inventory is so valuable and varied is that in the two and a half decades in which we were privately owned, when plants could easily pass international borders, our mission was to create an ark for the world's endangered species, of course rejecting any with potential weediness.

Former Director Keith Woolliams brought high standards of record keeping for which Waimea Valley is well known. Our international reputation encouraged

field botanists to send us plants in need of protection from all over the world. Conservation and science come hand in hand. Planting things properly takes one set of skills, but the essence of a good botanical garden is providing accurate names for them and thorough records of where they came from. We have very well-labeled plants and when the names change, as they frequently do, we can engrave new labels on the spot to keep up with changing taxonomy.



Our native red *Hibiscus kokio* has one endangered subspecies only on Kaua'i, but the wild plants that can still be found statewide are considered a "species of concern". In 2004 we were excited to find a sprawling plant off of Drum Road, because at that time only two wild populations were known on O'ahu – behind the Dillingham airstrip and in Palolo Valley. Since then we've received two more purported wild plants from other places on O'ahu. How do we know that they are true *H. kokio*'s and not hybrids?

Experts compare them with known plants in a herbarium, a collection of dried plants usually glued to acid-free paper. We have a small herbarium in our library, and over the years have given material to the giant one at the Bishop Museum. There are now over 21 accessions of *H. kokio* growing in Waimea Valley, 13 of these wild-collected from four islands. Each of these, including the cultivated blood lines, are unique forms of this beautiful species, and they should be "vouchered" for posterity and research. Volunteers are working on making herbarium sheets (called vouchers) of dried, pressed flowers, leaves and seed pods for every accession of this species at Waimea. Here's a great way for people (who'd rather not deal with bugs and mud) to help document Waimea's collections for the future – and you get work in air conditioned comfort.

By Popular demand—a repeat of “The History of Waialua Sugar Company” Illustrated talk will be presented

The North Shore Chamber of Commerce’s Historic Preservation Committee will present a program on the history of the Waialua Sugar Company showcasing the plantation experience, on Saturday, April 5th, 2014 7:00 p.m. at the Waialua United Church of Christ. The event will be sponsored by the North Shore Chamber of Commerce.

Local historian Boyd Ready will present an illustrated talk on the history of the Plantation in the first half of the program. During the second half of the program the research team will share materials that feature the Waialua community from the 1940s through 1971. These materials are part of the University of Hawaii’s Romanzo Adams Social Research Laboratories (RASRL) archive and were collected by sociology professors over several decades. The university students who wrote the papers and hand drew the maps were trained by sociology professors to research their communities.

Here is a sampling of the papers focused on Waialua plantation:

“My Neighborhood” – Waialua (1949) by Robert

Kumasaka

“My Neighborhood Mill 13 (Waialua)” (1950) by Gladys Jaynar

“Mill Camp 13, a Dying Village” (1971)

Members of the research team are: Lynn Davis, Charise Michelsen and Christine Kirk-Kuwaye. Their work is being funded by the Hawaii Council for the Humanities

Please join us for this exciting program celebrating our plantation heritage.

WHAT: The History of Waialua Sugar Co.

WHEN: Saturday, April 5, 2014, at 7 p.m.

WHERE: Waialua United Church of Christ

ADMISSION: Free (donations accepted)

CONTACT: Phone: 637-4558

website: www.gonorthshore.org



Kahuku teacher chosen to represent Hawaii, awarded by National History Day organization

Kahuku Elementary Teacher Dorian Langi was selected as a Behring Teacher Ambassador and regional winner by National History Day, an education organization and academic program focused on historical research for fourth- to 12th-graders. Only 36 U.S. educators were chosen.

Langi, who has spent her 25-year career at Kahuku Elementary, was named Feb. 28 for showing outstanding creativity, commitment and inspiration in developing students’ interest in history, and for demonstrating excellence in the classroom. The veteran educator uses the yearlong History Day curriculum to achieve all the Common Core Standards for language arts.

As a regional winner, Langi will receive \$1,000 for her upcoming service as a History Day ambassador in Hawaii and will travel to Colorado in August. There she’ll undergo training to equip her in her duties, which include mentoring Hawaii teachers in the History Day curriculum and finding ways to improve the program.

“I use History Day to make it exciting for the students to meet the benchmarks for language arts,” Langi said. The full-time teacher has 40 students. “The History Day program has been a key component . . . by helping our students become responsible, independent learners empowered with the skills

that will help them contribute to society,” Langi stated. “I have seen many lives, including my own, blessed by participating in History Day.”

The mother of seven children engages her pupils in the discovery of the historical, cultural and social experiences of the past through hands-on experiences and presentations, and project-based curriculum and instruction.

“Dorian has worked with students on History Day projects for 11 years,” said Kahuku High and Intermediate Principal Pauline Masaniai. “Dorian’s ability to get students to dive into primary sources and understand informational texts is amazing. She’s dedicated hundreds of late nights, weekends and holidays to support her students and she’s very deserving of this award.”

Langi earned her degree in elementary education from Brigham Young University and completed her special education training and certification through the Hawaii Department of Education. Six of her children attended Laie Elementary, her daughter attended Hauula Elementary and all of them graduated from Kahuku High School.

In 2010, Langi was a finalist for the national Patricia Behring Teacher of the Year Award. NHD co-sponsors include the History Channel and National Endowment for the Humanities.



Patagonia's Kohl Christenson poised at Pipeline

Photo: Banzai Productions



Olympian Cara-Beth Burnside on air tour with Poseidon Foundation.

Photo: Banzai Productions



BANZAI NORTH SHORE WIRELESS

The Poseiden Foundation, a group of skater chicks, was in town doing their annual tour to motivate keike to dream big! They are here to encourage, create thought and fresh perspectives, and to spread aloha. With them on tour was "CB", Cara-Beth Burnside who is a pioneer of women's professional skateboarding and snowboarding. She was on the first Olympic snowboarding team in Japan and has won more than 18 titles in skate competitions such as X Games and the The All Girl Skate Jam. "I worked with the Poseiden Foundation a couple years ago and I liked it", CB explained. "I like being with the kids and stoking them out. It is cool to inspire each other. Nice to meet up with some of the girls that skate in Hawaii also." CB says skating is growing especially because all the skate parks are coming up and hopes to come back for a competition here. "It is a beautiful place and it is even better to come over with a purpose, to reach out to the community, it is all about positive energy." Check her out and the women skaters at [www.http://hooplaskateboards.com/](http://hooplaskateboards.com/) and congrats to the Poseiden Foundation for stoking out the kids!

The Pipe Pro juniors completed their first day of competition in 4-7 foot pipeline surf. It was not perfect with north and west direction waves hitting the reef and heavy trades running. Stand outs included North Shore surfer Makai McNamara who scored big on a left tube ride and a right cover-up attached to a big off the lip slam at back door. Barron Mamiya was at home in the break and pulled off some great air maneuvers wowing the crowd and scoring enough to win his heat. The event ended the day early because of the windy bumpy surf. We will have a full



Makai McNamara scores at Backdoor- North Shore Surf Shop Jr. Pro. Photo: Banzai Productions

report when it is completed.

Alex Gray from California won the Nelscott Reef Big Wave event now called the Oregon Dive n Surf Pro. The surf spot officially named Tacklebuster Reef is in Lincoln City. It was a bumpy 10-15 feet or so and proved to be a challenging day of thick wetsuits and cold water charging. The average water temperature there is 47-53 F and air temps range from 55-61. This is a whole different mentality of surfing! The North Shore's own Kohl Christenson took a fourth place finish in the event. The Big Wave World Tour is now part of the ASP and is gaining some momentum after a deal cut with NBC to air the events live on-line. There was also a Women's "Super Heat" of invitees. It was Pipeline Champion and San Fran local Bianca Vallenti that took the prize. Maui's Andrea Moller ended up in 2nd with Kauai's Kealla Kennelly in 3rd. Congratulations to all, results follow!

- 1st place: Alex Gray
- 2nd place: Shawn Dollar
- 3rd place: Twiggy Baker
- 4th place: Kohl Christensen
- 5th place: Will Skudin
- 6th place: Anthony Tashnick

- Women's Super Heat
- 1st place Bianca Vallenti, Ca.
 - 2nd place Andrea Moller, Hi.
 - 3rd place Keala Kennelly, Hi.
 - 4th place Savannah Shaughnessy, Ca.
 - 5th place Jamila Star, Ca.
 - 6th place Paige Alms, Hi.
 - 7th place Wreena Delgado, Hi.

**BEACH
CLEAN UP**
Chun's Reef - 10a.m.
637-2211
 Last Saturday of every month
 adoptbeachhawaii.org



Aloha Patrol

By Ryan Lorne

Pupukea Shell Service Station

"I think of the old Pupukea Shell Service Station on Kamehameha Hwy - two pumps, 60's glass and concrete architecture and a roll up two car garage front; mortise and tenon awning."—Garrett Hongo "Pupukea Shell"

Located in the center of Shark's Cove is one of the oldest businesses' with one of the best views, Pupukea "Shell" Service Station owned and operated by brothers Mike and Ron Yoshikawa since their father's death in 1968. Some people like to say "Service is Our Business" is the name of the service station because that's the only sign out front.

The Yoshikawas have been living in Hawaii since the 1890's. They purchased the service station land in the early 1900's, bringing the Pupukea Shell Service Station to life in 1968. Mike and Ron have dedicated 46 years of service to our North Shore community and say they have about 5 more years before they retire.

Business at the service station is always steady, the one service the service station does not offer is getting your tires rotated and gas!

Mahalo Mike and Ron!

MOKULE'IA WRITER'S RETREAT MAY 4 - 9

Calling all writers, novelists,
poets, journalists,
and passionate scribblers!
Intimate writing workshops,
yoga, Hawaiian
music, coaching, beachcombing,
and visits to cultural sites.
Plus special guests.

For more information
www.campmokuleia.com/specialevents.html
email: connie@sinandsyntax.com



WAI'ALUA BULLPUPS

presents the 1st annual



WWW.WAI'ALUABULLPUPS.ORG



Sponsored by
DownCountry
Party Rentals

Tons of Fun: Bouncers, Obstacle Courses, Slides, Games, Raffles, Crafts & Vendors...
Ono Food: Hot dogs, popcorn, cotton candy...
Silent Auction: Authentic NFL Memorabilia

DATE: Saturday, April 5, 2014

WHERE: Wai'alu District Park

TIME: 9am to 5pm

NORTH SHORE CHAMBER OF COMMERCE NORTH SHORE EXPERIENCE: Learn, Grow, Prosper



6TH ANNUAL BUSINESS EXPO PRESENTED BY WAIMEA VALLEY
Friday, May 2, 2014 • 8:00am - 6:30pm • Pikake Pavilion, Waimea Valley



ATTENDEE & EXHIBITOR REGISTRATION

Register by April 11 for the Early Bird Discount!

Registration Information

Attendees

Includes continental breakfast, sandwich buffet, Pau Hana Reception, all day program

	By April 11	April 12 - 25
North Shore Chamber of Commerce Members	<input type="checkbox"/> \$60	<input type="checkbox"/> \$80
Non-Members	<input type="checkbox"/> \$75	<input type="checkbox"/> \$95

Exhibitors

Includes booth space (1 booth sign, 1 6' table, 2 chairs) plus 2 exhibitor registrations

Exhibitor Name (For Booth Sign)

Exhibitor Registration Name 1 (For Badge)

Exhibitor Registration Name 2 (For Badge)

	By April 11	April 12 - 25
North Shore Chamber of Commerce Members	<input type="checkbox"/> \$250	<input type="checkbox"/> \$300
Non-Members	<input type="checkbox"/> \$300	<input type="checkbox"/> \$350
Non-Members Plus Membership *	<input type="checkbox"/> \$385	<input type="checkbox"/> \$435
Optional (1) Additional Exhibitor Registration		<input type="checkbox"/> \$50

*** \$40 discount on North Shore Chamber of Commerce membership for joining today!** Membership benefits include networking opportunities; free North Shore Chamber of Commerce Website listing with link to your Website; rackcard display at Visitor Center; discounts on events, meetings, workshops; historic preservation; and more

First Name Last Name

Attendee Name (For Badge) *If Exhibitor, enter name for badge at left under Exhibitors*

Title

Organization (No Acronyms Please)

Street Address

City State Zip

Phone Fax

Email

Emergency Contact Name Emergency Contact Phone

Payment Information

Check Enclosed: Payable to NORTH SHORE CHAMBER OF COMMERCE

Credit Card: Please charge my Visa Mastercard

Name on Credit Card

Credit Card # Expiration Date

Signature

Total \$

Please complete all information and mail or fax registration form plus payment to the North Shore Chamber of Commerce. You may also call to register by phone. Please have all registration information and payment method ready when calling.

NORTH SHORE CHAMBER OF COMMERCE • GONORTHSHORE.ORG

66-434 B KAMEHAMEHA HIGHWAY • HALEIWA, HI 96712 • PHONE: (808) 637-4558 • FAX: (808) 637-4556 • EMAIL: info@gonorthshore.org

WAIALUA FARMERS' CO-OP MARKET

WAIALUA SUGAR MILL GROUNDS
SATURDAYS

8:30 A.M. – 1:00 P.M

BUY DIRECTLY FROM FARMERS

- KAHUKU FARMS
- FIELDS OF ALOHA
- TWIN BRIDGE FARMS
- DEL TROPICAL FLOWERS
- WAIALUA FRESH PRODUCE
- T & L PALMS AND FLOWERS
- WAIALUA COOPERATIVE FARMERS

- FOOD VENDORS
- STEAKOUT
- NORTH SHORE GOODIES
- SOMETHING SPECIAL BISCUITS & CAKES AND MORE

A MARKET MANAGED BY FARMERS
EDITH: 637-8589

AFTER-SCHOOL ACADEMICS GRADES K-6

MATH / READING / WRITING / SPELLING
HOMEWORK / TEST PREP / TUTORING

Includes Hearty, Nutritious SNACKS

MONDAY - THURSDAY

School Dismissal 'til 6:00 P.M.

Located in KAHUKU

469-6463 ENROLL TODAY !

Individual Tutoring for Grades K-12 On Saturdays By Appointment

J.B. TILE & CARPET

JOHN BURTCH

Free estimates
25 years experience
(808) 226-1023



BULLETIN BOARD

NORTH SHORE FIX IT

Journeyman Capacity
Concrete, Framing (wood, metal)
Light Electrical, Plumbing,
Drywall-Hang, Tape & Texture
Drywall Patching, Painting, Pressure Wash
25 yrs experience - (808) 222-9381

ILAN FREITAS

c 808 372-8848
a any part of the island
e greenwaveslandscaping@yahoo.com



yard maintenance
grass planting
sprinkler system installation & repair
landscaping design & renovation
dirt removal
commercial & residential
no jobs are to big or too small



Ernie Doak Plumbing, Inc.

Quality without Compromise

NEW CONSTRUCTION ♦ RENOVATION ♦ SOLAR
Serving Oahu's North Shore for over 20 years

ERNE DOAK cell 295-7943
Lic. #CT-22113 office 638-8620
Lic. #PJ-10630 erniedoakplumbing@yahoo.com

Want to Lower Your HECO Bill to
\$17 a month?



Your North Shore Solar Experts
554-2572

www.directelectrichawaii.com

Lic. # CT32543

"THE BULLETIN BOARD THAT IS IN EVERYONE'S HOME"

BULLETIN BOARD



Specializing in vegetarian foods, vegan foods, whole foods, organic food. Wheat free, dairy free, raw foods, gluten free. A complete selection of natural foods for 39 years. Make earth day, everyday. Open 7 days. Mon.-Sat. 9am-7pm. Sun. 9am-5pm

66-445 Kam. Hwy
Haleiwa, Hawaii 96712
Next to the Post Office
808-637-6729 • 808-637-1922 fax



DR. PORTER TURNBULL
Chiropractic Orthopedist
(808) 638-8740
Appointments available Mon.-Sat.
(evenings by appointment)

- Industrial accidents & auto injuries
- Sports injuries • Spinal care
- Safe, Effective, and Gentle

N-C PLUMBING & SUPPLY

Cont. Lic. No. C-8913



- RESIDENTIAL & COMMERCIAL SALES & SERVICE
- CONTRACTING & DESIGN • HOME PLUMBING SERVICE
- PLUMBING FIXTURES, HEATERS • FREE ESTIMATES

Nestor P. Calilao (Owner) Bus: 637-8662
P.O. Box 769 Res: 638-5157
Waiialua, HI 96791 Cellular: 372-8718

email: nncplumbing@hawaii.rr.com

www.oahuscreens.com



New window installation Sliding/swinging doors
New screens/re-screens Screen door roller repair
Pet proof screens Pet grills and doors
Porch enclosures Solar screens

FREE ESTIMATES • (808) 783-8764



Restaurant & Margarita Bar

- DAILY SPECIALS -

Island Fresh Fish Tacos
Premium Margaritas

Large Parties Welcome Open Daily 9:30am - 9:30pm
637-3059 • North Shore Marketplace • Haleiwa
www.CHOLOSMEXICAN.com



COWPER CONSTRUCTION

LIC. #AC 18275

GENERAL ENGINEERING CONTRACTOR

Full Service Sitework
Contractor

Septic Systems & Tanks
25 yr. exp.

Michael Cowper 638-7200
cowperhawaii.com

Munden Design & Build

Lic.#BC19632

Design • Plans • Permits • Construction
Additions & New Residences

808 391-8616

Providing quality work since 1978



License No. C28113

Commercial • Residential
Septic • Solar • Design

Mike 630-1407
Steve@offshoreplumbinginc.com

SUNSET AUTO SERVICE, INC.

- Auto air conditioning specialist
 - Auto engine maintenance
 - Safety inspection station
- Walking distance to Wahiawa DMV

Call for appointment
622-5510

Matt Verdadero
207 N. Cane St., #1 Wahiawa



Jay Oku
Loan Officer

(808) 393-0707
Office: (949) 281-3076

jay.oku@academymortgage.com
academymortgage.com/jayoku



NMLS #218211 | State Lic: CA #CA-D0C218211, HI #HI218211
Corp Lic: CA #4170013, HI #HI-3113 | Corp NMLS #3113 | Licensed by the Department
of Business Oversight under the California Residential Mortgage Lending Act



Reward

\$500 reward for the return of my stolen rings or for information that results in the return of my rings and a Hawaiian bracelet. Ring # 1, my engagement ring is a size 9 and it is a Hawaiian Heirloom jewelry. It has a black lacquer leaf design around the ring. It is about 1/8 inch thick. The diamond is a 1/2 carat. The distinguishing thing about this ring is that because it was resized there is a part on the bottom that is just plain gold with no engraving. Ring # 2, my sister ring, my sister and I have matching rings made from our mothers diamonds. It is again a size 9, silver with 5 inlaid diamonds, about 1/4 of an inch wide. These are two very sentimental rings. Please, I need them back. They were stolen out of my Sunset Beach home sometime in November on Wehiwa Pl. They may have been used to trade for drugs or whatever. You may not even know that they are stolen. I have pictures of them so please call me, Carma, at 927-1522 or email me at carma@hawaii.rr.com so i can send you a picture. The Hawaiian bracelet has the name "Ioke" written on it. It belonged to my mother and I received it when she passed away. If you want to remain anonymous, I work as a carrier at the Waialua Post Office. You can take them there and tell them to give them to me. I will still pay you if you give information on where to send the money. PLEASE, PLEASE!!!!

North Shore News



2014 Schedule

PUBLICATION DATE	EDITION	DEADLINE DATE
April 2	#7	March 20
April 16	#8	April 3
April 30	#9	April 17
May 14	#10	May 1
May 28	#11	May 15
June 11	#12	May 29
June 25	#13	June 12
July 9	#14	June 26
July 23	#15	July 10
August 6	#16	July 24
August 20	#17	August 7
September 3	#18	August 21
September 17	#19	September 4
October 1	#20	September 18
October 15	#21	October 2
October 29	#22	October 16
November 12	#23	October 30
November 26	#24	November 13
December 10	#25	November 27

Direct-Mailed to Every Home
MOKULEIA • WAIALUA • HALE'IWA • KAHUKU • LAIE
 Every Other Wednesday
12,000 copies
 "The North Shore's most popular publication" since 1970
 (808) 637-3138 • NShoreNews@aol.com • NSN4Linda@aol.com
 www.northshorenews.com



North Shore News 2014 Special Editions

Publication Date	Edition	Deadline Date
April 16	Earth Day	April 3
May 14	Health & Wellness	May 1
June 11	Pets & NS Animals	May 29
July 9	Home Improvement	June 26



The North Shore News is published every other Wednesday and mailed free of charge to all North Shore homes and businesses. Extra copies may be obtained at our office.

PRESS RELEASE POLICY: Submit press releases in person or by fax, mail or email to Editor, North Shore News, 66-437 Kam. Hwy., Suite 210, Haleiwa, HI 96712. Please type your releases and keep them shorter than 200 words unless they are of an unusual news interest. Releases should be viable news stories and are published on a **space available basis only**, with priority given to those received in our office first. You may attach photos. We are not responsible for the return of any photos. All materials are submitted at owner's risk. We reserve the right to edit and/or refuse all submissions including advertising.

EDITORIAL POLICY: We welcome articles and letters from our readers. Letters to the Editor are published on a space available basis only and preference is given to shortness of length, and quality of content. We prefer to run not more than one letter, per person, per 6 month period. Letters subject to edit.

Views expressed by our contributing writers and advertisers do not necessarily reflect the view of the management and staff of the North Shore News. All rights reserved. Reproduction in whole or part without permission is prohibited. © 2014.

Editor & Classifieds

Linda Seyler

Typography

Downtown General Store

Contributing Writers

Betty Depolito
Naty Hopewell
Choon James
Ryan Lorne

City Councilman Ernie Martin
State Representative Lauren Matsumoto
State Representative Richard Lee Fale

Photography

Banzai Productions
Ole Seyler



Please recycle this newspaper.

CLASSIFIEDS

SERVICES

SHORE ELECTRICAL SERVICE

New Const-Remodels
638-0049 / Lic#C20777

Dog/Cat Nail Trimming

at your home only \$15.00
Call Julie 637-5395

Lawn Care For You

Mowing, Trimming, Light Hedging
Call Thomas 637-5839

PARADISE PLUMBING INC.

New Const • Repairs • Remodels
808-368-1473 / Lic. 29856

Handyman Services

Remodeling, Carpentry, Floors,
Concrete, all parts of Construction
Call Bob "The nicest guy in the
business" Ph. 282-2812

Greekz Plumbing LLC

Complete Service & Repair
Camera inspection/drain cleaning
"Got a leak? Call Steve the Greek"
808-372-1820 Lic#32939

North Shore Pumping

Septic and Cesspool Service
Clifford 638-0900 • 291-5099

Computer Problems?

I can fix any MAC or PC.
Chris 371-3089

Traveling Professional

Housekeeper

Dorothea M. Smith

808-258-6555

Carpentry & Painting Services
Repairs/Remodeling, Termite Rot
Doors, Cabinets, Countertops, etc.
Reasonable Rates 271-6884

Repairs
Remodeling
Renovation
638-7878
Lic. #C12004

Paumalu Electric Inc.

C 18074

Residential & Commercial
New Installation & Repairs
Renovations. Remodels
Electric Meter Replacements
Complete Install for Solar PV

Dave Hancock 638-9054

BOW WOW BUNGALOWS

Licensed Boarding Kennel
North Shore, Oahu
Reasonable Rates
Ph. 637-2562

These Dogs Have Fun!

HARVEY'S REPAIR, LLC

24 hrs Towing Service
*Specializing in opening
locked car doors*
Call any time 478-0333

N.S. Property Maintenance

Complete building & grounds
maintenance, painting int/ext,
demolding & power washing
specialist, carpentry,
fences & decks
Chris 381-5213/638-0659

Malia's North Shore Massage

14 years experience
*Women by appointment
Men by referral*
(808) 375-3879

maliasnorthshore.massagetherapy.com

Golden Rule Lawn Care

*Mowing, weed whacking,
hedge trimming, rake up,
light weeding & haul away.*
Call Matt 269-5020

Next Issue - April 2, 2014
Deadline Date-March 20, 2014

BIKRAM YOGA

5 a.m. Tues & Thurs!
3 p.m. classes Sat. & Sun.
\$10

Call for class schedule

637-5700

Your Clean Home

**Vacation/Residential
Home Cleaning**

Affordable • Reliable

• Green Cleaning

For Free Estimate

Call 638-0262 or 782-9941

BOBBY'S BODIES

Tuesday evenings at 5:00 p.m.

• Body Toning

Friday mornings at 9:00 a.m.

• Cardio Pump/Fat Burner

For more info: call Bobby, owner of
BOBBY'S BODIES at 637-4150

Aloha Computer

PC Repair/Virus Removal

Fax/Copy/Internet Access

372-2667 or 237-4558

SHIATSU • LOMI

Aromatherapy

Milica Barjaktarovic

Lic # MAT8348

351-0848

HumanRemodeling.com

DILLON SIGN

& Residential Painting

Haleiwa - 20 yrs exp.

499-9582

Waynebow

Window Washing

Residential • Commercial

New Construction • Free

estimates

223-4034

HOW TO CONTACT THE NORTH SHORE NEWS

Letters to the Editor, and other items submitted for publication consideration may be sent to us via:

MAIL: 66-437 Kamehameha Hwy., Suite 210, Hale'iwa, HI 96712

E-MAIL: NShoreNews@aol.com

PHONE: (808) 637-3138

Office Hours: Monday-Friday 1 p.m.-5 p.m.

www.northshorenews.com

CLASSIFIED ADS

GERMAN CAR SERVICE
 Professional-Qualified
 Technician
 Call Gary
 637-6800

PIANO LESSONS
 Guitar, Ukulele, Bass,
 Songwriting
 637-4635

**Queen's
 Open Market**
 Sundays 1:00 to 5:00 pm
 Liliuokalani Church

NS Food Bank
 Food bag distribution
 Wednesdays, 9am-11am
 Waialua Comm. Assoc.
 (Haleiwa Gym)

**NORTH SHORE
 AUTO DETAILING**
 Services
 Wash, wax, vacuum, water spot removal,
 paint sealant, light buffing
 We also pressure wash sidewalks
 driveways and more
 For more info
 Call Billy (808)371-0854
 Prices may change upon inspection
 of vehicles condition and size
We are mobile we come to you

HELP WANTED
BUSSERS/SERVERS
 Pizza Bob's in Haleiwa is looking
 for BUSSERS/SERVERS. Experi-
 ence preferred. Apply in person
 at 66-145 Kam. Hwy.



Keep it Country
 To report ILLEGAL VACATION
 RENTALS
 call 768-8159 or 768-8118
 You will remain anonymous
**Illegal Vacation Rentals
 are ruining the North Shore**
 www.savenorthshoreneighborhoods.com

Business Services Center
 Fast & convenient fax, copy,
 scan, computer/internet,
 laminate, etc.
 Across from Haleiwa post office.
 637-4558 or GoNorthShore.org

COOKS/KITCHEN HELP
 Pizza Bob's in Haleiwa is looking
 for kitchen personnel. Experi-
 ence preferred, but will consider
 training the right people. Apply
 in person at 66-145 Kam. Hwy.

Classified Ad Rates
 3 lines (min.) \$18.89
 4 lines \$25.13
 5 lines \$32.45
 1" Box Ad \$41.88
 (27 characters in each line)
 Include your contact information.
 *Ads can be dropped off in mail slot,
 mailed, or emailed. Pay by check pay-
 able to: North Shore News or credit
 card by phone order.
 We reserve the right to refuse any
 advertisement with a full refund.
 North Shore News • 66-437 Kam. Hwy.,
 Suite 210, Haleiwa, HI 96712
 • (808) 637-3138 • NShoreNews@aol.com

**Statewide Hotline
 for Litter**
1-888-592-2522
 Callers need to provide:
 1. License plate number
 2. Make and model of
 vehicle
 3. Date and time and
 location
 4. What was thrown/
 blown

Individual & Family Therapy
 • Grief & Loss • Habits & Addiction
 • Life Challenges & Transitions
 • Clinical Supervision
 Curielle Duffy, MA, MSW, LCSW, CSAC
 808.633.3437 www.liferecovery.pro

**Retail Sales
 Surf & Sea**
 Hawaii's Ocean Sports Headquarters
 is always looking for hard working,
 energetic people to become a part
 of our sales team. Good pay, bonus,
 benefits. Ocean sports experience
 and/or bilingual a plus. Apply in
 person daily 9am-7pm
 62-595 Kam. Hwy., Haleiwa

**Please Report Stranded
 Sea Turtles**
 Call 983-5730 • Mon.-Fri., 7am-4pm
 288-5685 pager wkdends, holidays
 587-0077 and after hours
 Suspected Law Violations
 541-2727 or 800-853-1964
 NOAA Fisheries DLNR-DOCARE

New Hope Haleiwa
 "Anchored to God's word,
 led by his spirit" @Haleiwa
 Elementary School
 9:00am Service
 621-9363

PILATES
 with Linda Yadao
 Private Equipment Classes Only
 over 35 years of experience
 call
808 637 1230
 lindayadao@gmail.com

MISCELLANEOUS
**Waialua Library
 Book Club**
 4th Thursday
 March 27, 2014
 9:30 a.m.-11:30 a.m.



**Voice of God
 Ministries**
 Jesus Loves You
 If you need Prayer
 Call 808-373-0294

**Marianne
 Abrigo, Properties**
 Specializing in -
 North Shore
 Real Estate
 Ask for our list of avail-
 able properties and/or a
 free market analysis.
Marianne M. Abrigo
 "Realtor since 1974"
 Office 637-3511
 Fax 637-0777
 Email mabrigo222@aol.com

OFF da ISLAND
 Are you leaving Oahu on vaca-
 tion or business? Do you live on a
 neighbor island, the mainland or
 foreign country and subscribe to
 the North Shore News? Try send
 us a photo of someone in front
 of a sign or landmark holding a
 copy of the NSN. Email your photo
 along with the person or persons'
 name, community of residence,
 telephone number and photo loca-
 tion to: NShoreNews@aol.com.

**Hale'iwa
 Art Walk**
 Last Saturday
 of each month.
 5:00p - 9:00p

FREE ADS
 Garage & Yard Sales,
 Reunions, Lost & Found.
 Email ad to:
 NShoreNews@aol.com

**Hawaii Polo
 Opening Day**
 Sunday, April 6, 2pm
 Dillingham Field Mokuleia

**Complaints
 About Public
 Trees**
971-7151

For Advertising Rates
 Call 637-3138
 or go to
 www.northshorenews.com

**North Shore News
 Earth Day
 Special Edition**
 Publication Date April 16
 Deadline Date April 3

Save the Sea Turtles Int'l and Adopt a
 Beach and Highway Hawaii
BEACH CLEAN UP
 Last Saturday of every month
 10 a.m. • 61-529 Kamehameha
 Hwy., Haleiwa, HI 96712
 For more information 808-637-2211
 Check out our website at:
 http://adoptabeachhawaii.com



Malama Market Haleiwa:
Open Daily 7 a.m.–9 p.m.
(808) 637-4520

Malama Market Makakilo:
Open Daily 6 a.m.–10 p.m.
(808) 672-9955

Valid Dates:
3/19/14–3/25/14

Deals of the Week!

Strawberries
16 oz.

\$3⁴⁹
EA.



choice *Certified Angus Beef*[®]
**Boneless
Chuck Steak**
Value Pack

\$5⁹⁹
LB.



Coca-Cola
Selected Varieties,
12/12 oz.

\$4³⁴
EA.
When You Buy
3 or More!



**Aloha Maid
Fruit Drinks or Teas**
Selected Varieties,
6/11.5 oz.

2/\$5



**Progresso
Soup**
Selected Varieties,
18.5–19 oz.

\$2⁴⁹



**Love's
Jumbo Loaf Bread**
Selected Varieties,
32 oz.

2/\$7



**DiGiorno
Rising Crust Pizza
or Pizza
Dipping Strips**
Selected Varieties,
11.5"

2/\$12



**Kool-Aid
Bursts
or Capri Sun
Spouted Pouches**
Selected Varieties, 11.2 oz.

4/\$5



**Fresh Baked
Glazed
Donuts**
Prepacked, Dozen

\$5⁹⁹
EA.



**15 Piece
Fried Chicken
Thighs**
Original, Korean,
or Furikake

\$15⁹⁹
EA.



**Bud, Bud Light,
Miller, or Coors**
30 Pk. Cans

\$23⁹⁹



Thursday

Grilled Steak Lunch

7–8 oz. Steak, Rice, Tossed Salad, Drink

\$7⁹⁹



Hawaii Beverage Fee Hawaii Beverage Fee of 1.5¢ per can or bottle will be added to purchase price at checkout. An additional Hawaii Deposit Fee of 5¢ will be charged for all specially marked beverage containers.

Limit five units (mix/match) per purchase, unless otherwise specified. We reserve the right to limit quantities. No sales to dealers. Prices plus applicable state tax. Hawaii EBT cards welcomed.