



"E Ala Na Moku Kai Liloloa"

Help me!

With only 10 days left
til Christmas,
Santa is desperate
for your kokua.
See pages 3, 5 & 6.

"Ho...ho...ho"



NORTH SHORE NEWS December 14, 2011 VOLUME 28, NUMBER 25



'Tis the season to kokua our needy neighbors

Joe Lazar (pictured above) delivers a postal bin full of new toys to Operation: Toybox on Wednesday, December 7, 2011. The proprietor

of Hale'iwa Joe's restaurant invites his 60 employees to bring a new toy to the company's annual Christmas party for distribution on Christmas

morning to the annual Operation: Toybox event for homeless and disadvantaged keiki.

The 21st annual Operation: Toybox and Christmas Morning Breakfast takes place at the Hale'iwa Post Office parking lot on Christmas morning. Donation of new toys continues through December 23. See page 3 for drop-off location. (Ron Valenciana photo)

66-437 Kamehameha Hwy., Suite 210
Hale'iwa, HI 96712
PRE-SORTED
STANDARD
U.S. POSTAGE PAID
Honolulu, Hawaii
Permit No. 1479

Annual North Shore Christmas Morning Breakfast and Operation: TOY BOX

Sunday, December 25, 2011

Location: Hale'iwa Post Office Parking Lot



Once again, we are happy to host our annual Christmas Morning Breakfast and Operation: Toybox. Both events are held simultaneously on Christmas morning beginning at 8:00 a.m. in the Hale'iwa Post Office parking lot.

WHO IS INVITED?

Operation: Toybox is for children who might not otherwise receive a new toy on Christmas Day. If children 12 and under come with their parents or guardians and sign-in at the registration table, they will receive a brand new toy from Santa Claus, guaranteed! Teens 13 to 17 will also receive something new and a chance to win many valuable prizes including bicycles and bodyboards. The only requirement is to arrive early or on-time and register your name.

The registration table opens at 7:30 a.m. Santa Claus arrives at 8:15 a.m. and toys will be given away from 8:30 a.m. to 10:00 a.m. Children & teens must be present to receive their gifts.

The Annual Christmas Morning Breakfast begins with a simple prayer of thanksgiving at 8:00 a.m. Then it's eat, eat, eat 'till the food runs out! Once again, the delicious meal is provided compliments of the Turtle Bay Resort.

Who is invited to the free breakfast? Anyone who is homeless, needy, underprivileged, senior citizens, and singles who might otherwise spend the morning alone. There will be countless give-aways all morning including valuable grocery bags for adults, while supplies last on a first-come basis.

For more information contact the office of the North Shore News at 637-3138. Sponsored by North Shore News, Turtle Bay Resort & Once A Month Church.

See you Christmas morning!

Mele Kalikimaka!

It's that time again!

OPERATION: Toy Box



Get in the true Christmas spirit!
 Santa needs your help to provide toys for homeless
 & needy children this coming Christmas morning.

Here's how YOU can help...

You, your family, business or organization can sponsor a keiki or teen in one of the following age groups. You can sponsor more than one.

BOYS

GIRLS

___ 0-24 months old

___ 0-24 months old

___ 2-5 years old

___ 2-5 years old

___ 6-9 years old

___ 6-9 years old

___ 10-12 years old

___ 10-12 years old

___ 13-17 years old

___ 13-17 years old

Please call us to let us know what age group you are sponsoring.
 Gifts will be distributed on Christmas morning at the annual North Shore
 Christmas morning breakfast for the homeless & needy in Hale'iwa.

Please call: 637-3138 or 342-3969 for more info

Christmas is: Sunday, December 25, 2011

(Toy drop-off deadline is Friday, December 23, 2011)

Last year, over 500 keiki & teens received numerous new toys & holiday gifts. Over 250 families received bulging grocery bags, and over 900 hungry souls received a delicious hot Christmas morning breakfast. We need your kokua once again.



DROP-OFF LOCATIONS

Turtle Bay Valet, North Shore News, Mokulani Properties-Waialua, American Savings Bank, Haircut Shop-Laie, Lanikai Juice, Sunset Beach Christian School, Craftsway-Haleiwa Town Ctr., Waimea Valley, Breakers, North Shore Chamber of Commerce.

E waikāhi ka pono i mānalo

It is Well to be United in Thought That All May Have Peace.

Celebrate
the holidays with us.

For Reservations Call 293-6000

Join Pastor Ron Valenciana for a Christmas Eve Candlelight Service
at 6:30pm in the Kahuku Ballroom.

On Christmas Day, Leonardo's is hosting a
SPECIAL CHRISTMAS BUFFET

Seatings at 2:30pm, 5:00pm, and 7:30pm.

The Christmas Buffet will include an extensive salad bar featuring North Shore organic greens, a special Holiday pomegranate seed vinaigrette, house made Caesar salads with honey lemon Caesar dressing, and Antipasto platters. Enjoy hot entrees such as prime rib, fresh fish, honey glazed ham, and pecan crusted tofu with sautéed spinach & organic tomato coulis.

A great selection of homemade desserts will also be available including caramel custard, pumpkin maple cheesecake, fudge and Bouché de Noel.

Visit our Dining page online at www.TurtleBayResort.com for the complete menu and for reservations call 293-6000.

Mele Kalikimaka!

\$48 per person
\$24 Children ages 4-11
Credit Card required to hold the reservation
Must cancel within 48 hours;
A \$25 no show/cancel fee per person will be applied.

Leonardo's

AT TURTLE BAY RESORT

An Italian Sharing Experience



TURTLE BAY
OAHU'S FABLED NORTH SHORE

SANTA needs your HELP!



• Final Urgent Appeal •

Donations of new toys & clothes for kids of all ages are needed for OPERATION: Toybox a Christmas Day celebration for the homeless and needy. A delicious hot meal is already being provided. Here's how you can help. Bring your donated gifts to the office of the North Shore News by Friday, December 23, 4 p.m.

Families • Churches • Businesses • Clubs • Schools • Hui • Military
You can be one of Santa's secret helpers!

HERE'S WHAT'S NEEDED . . .

- 1) Toys for keiki ages 0-12, and, 2) Gifts for teens 13-17 yrs
- 3) Cash donations welcome

GIFTS SHOULD BE NEW • WRAPPED OR UNWRAPPED • Hale'iwa Post Office, 2nd Floor
Call 637-3138 for more information

Polynesian Treasures

Hawaii's largest selection of
Polynesian handicrafts and Hawaiian inspired gifts.

North Shore Marketplace • Haleiwa, Hawaii
Open daily from 10 a.m. • 808-637-1288

PKB HOLIDAY DISCOUNT T-SHIRT SALE



For a limited time only, enjoy a
holiday discount of 20% OFF
our original PKB t-shirts!

Original
Sada's
Malassada
T-Shirt



I Love
Snow
Puffies
T-Shirt

Available in assorted colors and sizes.
Be sure to also check out our selection of
mugs, aprons, bags and more. Just check out
our logo gift section.

www.pkbsweets.com



TO ALL OUR FRIENDS:
Greetings
OF THE SEASON!

Show you really care . . . give
GIFT CERTIFICATES
from Kua 'Aina Sandwich,
Home of the World's Best
Hamburger, since 1975.



Help me make a Christmas Miracle

This Christmas morning I'm expecting more than 500 keiki and teens to show up for our annual Operation: Toybox. Many will be homeless, many from poor and underprivileged families that can't afford a Christmas. I'm expecting more to attend than last year. It will all take place in the parking lot of the Hale'iwa Post Office. This will be our 21st year.

Last year I planned to feed 900 hungry souls on Christmas morning including children and adults. A few minutes into the breakfast, which was prepared and served by the Turtle Bay Resort staff, Chef Hector Morales pointed out to me with concern that the crowd looked to be about 1,000. He was right. He discreetly moved to encourage the volunteers to be conservative in their serving. In the end we had enough and nobody left hungry. Every grain of rice seemed to disappear.

This coming Christmas morning we are expecting and planning to provide new toys and gifts for 600 keiki & teens. We're expecting to feed 1000 hungry souls. Our calculating suggests that Operation: Toybox needs to acquire over 2000 new toys & gifts to meet the expected turnout. Our goal is to give every child one new premium toy and two or three secondary gifts such as a book, stuffed animal or school supply. We also plan to distribute 400 food bags to the adults.

Can you help me with this miracle?

All the news reports are telling me it can't be done in our present financial crisis, and that donations to non-profits are way down from previous years. With 10 days until Christmas morning we haven't come close to reaching the half way mark yet. But let me tell you "I'm not worried because I believe in miracles."

We need new toys...lots of new toys for lots of needy keiki & gifts for about 120 teens. We need them right away so our volunteers can sort them out and wrap them in colorful holiday packages. Every year on Christmas morning the keiki line up to sit on Santa's lap to receive their bag of new Christmas toys. It's always a miracle to behold! Come and see for yourself!

If you can make a financial donation we have Santa's elves standing by gassed up and ready to go to Walmart or Target to purchase the needed toys on our list. Your gift is tax-deductible. No gift is too small. We have no overhead, no rent to pay, everyone is a passionate volunteer. One hundred percent of your donation is used to buy new toys. That's part of the miracle!

Make your check payable to "Once A Month Church" which is a 501c3 non-profit organization established to serve the homeless and hungry in our community. The mailing address is: Operation: Toybox, P.O. Box 117, Hale'iwa, HI, 96712. Or bring your new toy or donation to the North Shore News office on the second floor of the Hale'iwa Post Office.

I believe that when times are tough, miracles can happen. Thank you for your contribution for a Christmas Day miracle. I am happy to answer any questions you may have regarding our annual Operation: Toybox and Christmas Morning Breakfast for the homeless and needy in our community.

Mahalo to those that have contributed and to all our Christmas volunteers.

Mele Kalikimaka!

*Ron Valenciana
Director of Operation: Toybox
342-3969*

come celebrate Christmas Eve at...

**bethlehem
village**

**december 24
5 pm**

A NSCF special event at the
Historic Haleiwa Gym

...stay for dessert

She will bear a Son; and you shall call his name Jesus,
for He will save His people from their sins. - Matthew 1:21

Quality Tile Crafts
"No job too big or small!"
Specializing in Ceramic Tile,
Travertine, Marble, & Slate

Kevin Wilson
cell (808) 864-4985 office (808) 638-8492
www.QualityTileCrafts.com Free Est.

wanna learn?
**NORTH
SHORE
JIU-JITSU CLUB**
try it out free!
men-women-kids
NorthShoreBJJ@GMail.com

**PKB HOLIDAY
GIVEAWAY NO.2**

"Da Best"

**We gave away a Christmas cake last issue
but we still have time to do one more
super special holiday giveaway!**

Our delicious butter rolls are a favorite during holiday celebrations. One lucky winner will win 3 dozen butter rolls to enjoy together with their Christmas dinner plus your choice of one I Love Snow Puffies or Sada's Malassada t-shirt!

Simply clip, fill out and bring in this entry form:

Name: _____
Email: _____
Phone: _____

One entry per person. Must be at least 18 years old to enter. Entries must be received by December 21, 2011.

www.pkbsweets.com



OFF da Island in Anaheim, California

The Abe Lacar family from Hale'iwa recently took a family vacation to the Magic Kingdom in SoCal. When at Disneyland they had to patiently wait in line for exciting rides. When back at the hotel they each had to wait patiently for a turn to read the good news from Oahu's beautiful North Shore in a recent edition of the NSN. Says father Abraham, "We never leave home without it." To learn more about our OFF da Island photo campaign turn to page 39.



splurge!

BE YOUR OWN SANTA
HAPPY HOLIDAYS

GUAVA SHOP

HALEIWA TOWN CENTER
637-9760 | OPEN 10-6 EVERYDAY

**T
HE
BEST
THI
NGS IN
LIFE, ARE
THE HARD
EST TO FIND!**

Hale'iwa's Most Hidden & Best Kept Secret...

**café
UNIVERSE
JUICE**

HALEIWA'S OWN

Food . Drinks . Music . Hawaiian

10% off Mention this Ad & Get 10% off your next visit 10% off

TRY OUR GRILLED AHI MELT! 808.637.0002 Located in the Hale'iwa Town Center

Surf INTO YOGA

with Rochelle Ballard

YOGA MASSAGE LESSONS


Private Surf & SUP with
Rochelle Ballard and Megan Abubo

808-638-8137 surfintoyoga.com

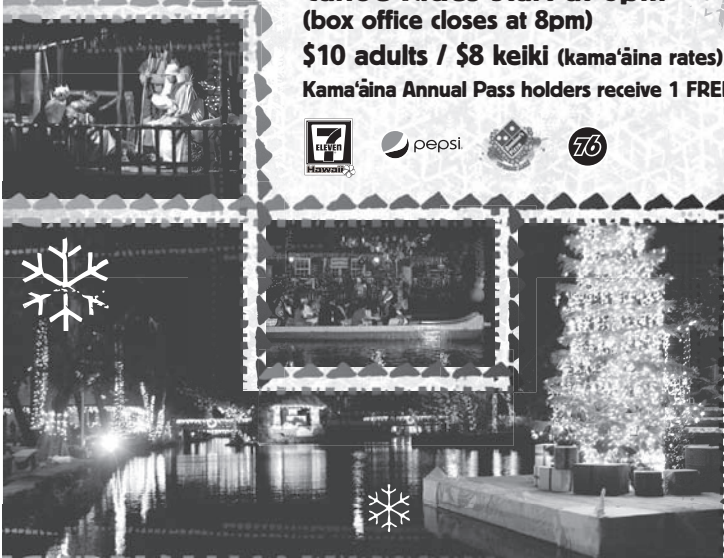
This season, we decked the lagoon.

December 12th-23rd
(Mon, Wed, Fri & Sat only)

Canoe Rides Start at 6pm
(box office closes at 8pm)
\$10 adults / \$8 keiki (kama'aina rates)
Kama'aina Annual Pass holders receive 1 FREE ride per nite



Christmas in Polynesia




Take a festive canoe ride through our brilliantly lit lagoon and enjoy the heart-warming story of "Kamakana and the Five Fir Trees." Plus we'll have lots of entertainment, fun activities and treats for all. For details, visit polynesia.com or call 293-3333.

POLYNESIAN CULTURAL CENTER

Some restrictions apply. Above rates are for Hawaii residents only with valid ID. Center is closed on Sundays.

COMPLETE YOUR SPECIAL EVENING WITH A BUFFET DINNER AT OUR NEWLY RENOVATED



'Christmas in Polynesia' whisks guests away to a Pacific Wonderland

PCC's festive canoe ride offers local take on traditional Holiday narrative, amid Christmas lights, musical performances and more.

The Polynesian Cultural Center (PCC) is decking not just the halls but its nearly entire 42-acre grounds and picturesque lagoon to present "Christmas in Polynesia," a 25-minute canoe ride that winds through a live production of Kamakana and the Five Fir Trees.

Rides will be offered from 6 to 8 p.m. every Monday, Wednesday, Friday and Saturday from Dec. 12 to 23, 2011.

"The storyline is a local adaptation of a popular Christmas story, The Three Fir Trees, depicting a grandfather as he shares with his grandson, Kamakana, how five fir trees became part of the Christmas nativity story," said William Mahoni, PCC special events manager.

Elaborate Christmas lights, decorations and musical performances — and even actors, animals and props — accentuate the production. The experience ends with contemporary Holiday Season icons such as Santa Claus, life-size gingerbread houses and more, which are sure to please keiki and the keiki-at-heart.

It is also an opportunity to experience all that PCC has to offer, including the new menu at the recently upgraded Gateway restaurant. And just for the Holidays, the entire center is being transformed into a full night's worth of sights and activity for the entire family. Guests will enjoy festive food, arts and crafts; enter-

tainment by halau, choirs and bands; and keiki holiday train rides.

In addition, free tram rides will be available to the nearby Laie Hawaii Temple Visitors Center, where guests can see a grand-scale Christmas tree display featuring 19 decorated trees.

"Christmas in Polynesia extends well beyond our lagoon, offering an evening's worth of family experiences to get our guests into the Holiday spirit," Mahoni added. "Our own family of staff, students and volunteers are really pulling out all the stops to transform the PCC into an immersive Polynesian wonderland. From our Christmas in Polynesia canoe ride to our new Gateway restaurant to the Visitors Center Christmas Tree display, without a visit to the PCC, you're simply missing out on all that Oahu has to offer this Christmastime."

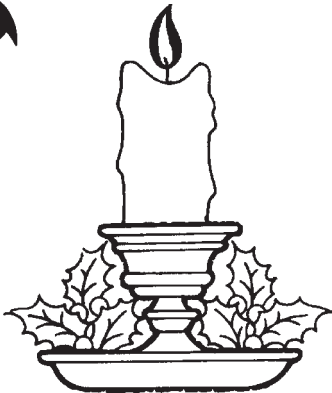
Christmas in Polynesia tickets are \$10 per adult and \$8 per keiki. Kamaaina Annual Pass holders may enjoy one free ride per night. Coupons for \$2 off the ticket price are available at participating 7-Eleven, Domino's Pizza, and 76 Gas locations. Kamaaina Rewards members and individuals who bring a Pepsi product are also entitled to the \$2 savings.

For more information on prices or to make reservations, call the PCC ticket office at (800) 367-7060 or visit www.Polynesia.com. On Oahu, call 293-3333.

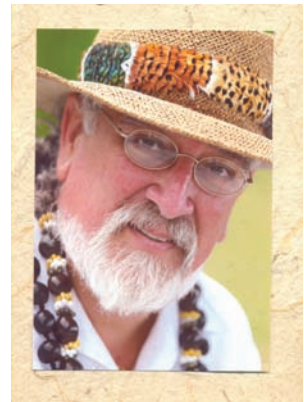
Christmas Eve • December 24

Candle-Light Service

Turtle Bay Resort • Kahuku Ballroom • 6:30 p.m.
 Traditional Christmas Hymns • Non-denominational
 Story of Jesus' birth read from the Bible



Inspiring 45-minute service
 hosted by
 Pastor Ron Valenciana
ALL ARE INVITED
 Area residents & resorts guests



Enjoy dinner at Leonardo's
 or 21 Degrees
 before or after the service.

For more information contact Pastor Ron Valenciana at 342-3969.

December Events!

Hale'iwa FARMERS' MARKET

sunday
 dec **HOLIDAY FAIRE**

18 Visit Santa, 30 local artisans,
 photo ops, bounce house,
 free arts & crafts for the keiki

SPECIAL SATURDAY FARMERS' MARKET & ARTISAN FAIRE

saturday
 dec **24** Shop from your favorite
 Local Farmers & Artisans
 ...everything from avocados to
 stocking stuffers!
closed Christmas day

www.HaleiwaFarmersMarket.com 808-388-9696

"IN THE HEART OF BIG SURF COUNTRY"

SHARE THE JOY THIS HOLIDAY SEASON



NORTH SHORE HAWAII

59-712 KAMEHAMEHA HIGHWAY

NOW OPEN

8:30 A.M. - 8:30 P.M.

7 DAYS

OCEANVIEW DINING

OR TAKE-OUT

638-8300

HALEIWA FLOWER SHOP

Wishes You All
 A Merry Christmas & Happy New Year



Haleiwa Flower Shop
 66-259 Kam. Hwy.
 637-5144

HUNDREDS OF COOL PRIZES WILL BE GIVEN AWAY...

Surfboards, Dive Gear, Bodyboards, Tees, Watches, Sunglasses, Hats, Beachwear, Surf and Dive Accessories and More!



The 22nd Annual
Twelve Days of Christmas
Giveaway!!

WIN!

Logos included in the wreath: ESHOGA, Island Silver, billabong, insight, GORILLA GRIP, Elemenohpee, Bubble Shack, RIP CURL, KREED, Stewart, vonzipper, adobe, CUSTOM: X, Hurley, BILBA BONG, PROTECK, DAKINE, Crush, globe, DC, Sanuk, H2Odissey, rusty, EST. 1965, SURF n SEA HAWAII, Freestyle, DEEP SEE, RVCA, Block Surf, Schaper, NSP, Hawaiian Style, ew, nixon, VIPER SURFING FINS, cobian, LUCY LOVE, Sea Sports, WATERMAN, BUSH MAN, Chester Stone, FCS, O'NEILL, SOUTH POINT, Reins, Crookies, FILTERATEYEWEAR, reef, and others.

HERE'S HOW TO WIN...

Pick up a free sticker at Surf n Sea. Stick it on your car, bike, skateboard, etc. From Dec. 13th thru Dec. 24th we'll be cruisin' the island, and if our elf spots your sticker, YOU WIN! It's that easy! Stop by for more details!

This is how you get there... find the ocean at Surf n Sea!
62-595 Kamehameha Hwy (Next to Old Haleiwa Bridge) Haleiwa -
(808) 637-SURF www.surfnsea.com

The Haléiwa Family Dental Center, Ltd.



presents

"Comfort Dentistry"

including—

- Relaxation Glasses
- Television Glasses
- Caring Staff
- Special Medication to help you relax
- Laser Cavity Detection
- New Patients Welcome!

Your teeth are much too important to neglect.

Call: 637-9652
for your reservation

We're conveniently located behind First Hawaiian Bank
in the heart of Haléiwa.

**Operation:
Toybox**

North Shore News will be open
on the following days for toys
& donation drop-offs.

Dec. 14, 15, 16, 19, 20, 21, 22, 23
from 10am – 4pm
Dec. 24
From 10am to 1pm

Call 637-3138 for more info

OPEN CHRISTMAS & NEW YEAR'S

MONDAY \$2.50 BEER NIGHT BOTTLES & DRAFT	TUESDAY \$5.00 OFF PIZZA NIGHT REGULAR OR LARGE	WEDNESDAY SALAD NIGHT 1/2 OFF SALADS
THURSDAY \$3.50 NIGHT \$3.50 SLICES, SALADS, MAI TAI'S, WINE & BEER	PIZZA BOB'S	
	FRIDAY NIGHT \$6.95 BURGER & FRIES	SATURDAY \$4.50 NIGHT \$4.50 SLICES, SALADS, MAI TAI'S, WINE & BEER (or less)

FRIDAY NIGHT \$6.95 BURGER & FRIES

Dine In Only - 4:00 PM Until Closing - Haleiwa Shopping Plaza - 637-5095

PLUS \$2.00 Off with this Coupon

Some Restrictions Apply. See Restaurant for Details.
When Ordering Regular Priced Items. Good Anytime. One Coupon Per Person.
Can Not Be Combined with Other Discounts. Expires 02/29/2012.

Editor's Choice

"Secure in Every Storm"

(Author Unknown)

Years ago, a farmer owned land along the Atlantic seacoast. He constantly advertised for hired hands. Most people were reluctant to work on farms along the Atlantic. They dreaded the awful storms that raged across the Atlantic, wreaking havoc on the buildings and crops. As the farmer interviewed applicants for the job, he received a steady stream of refusals.

Finally, a short, thin man, well past middle age, approached the farmer. 'Are you a good farm hand?' the farmer asked him. 'Well, I can sleep when the wind blows,' answered the little man.

Although puzzled by this answer, the farmer, desperate for help, hired him. The little man worked well around the farm, busy from dawn to dusk, and the farmer felt satisfied with the man's work. Then one night the wind howled loudly in from offshore. Jumping out of bed, the farmer grabbed a lantern and rushed next door to the hired hand's sleeping quarters. He shook the little man and yelled, 'Get up! A storm is coming! Tie things down before they blow away!' The little man rolled over in bed and said firmly, 'No sir. I told you, I can sleep when the wind blows.'

Enraged by the response, the farmer was tempted to fire him on the spot. Instead, he hurried outside to prepare for the storm. To his amazement, he discovered that all of the haystacks had been covered with tarpaulins. The cows were in the barn, the chickens were in the coops, and the doors were barred. The shutters were tightly secured. Everything was tied down. Nothing could blow away. The farmer then understood what his hired hand meant, so he returned to his bed to also sleep while the wind blew.

When you're prepared, spiritually, mentally, and physically, you have nothing to fear. Can you sleep when the wind blows through your life? The hired hand in the story was able to sleep because he had secured the farm against the storm. We secure ourselves against the storms of life by grounding ourselves in the love of God's Son Jesus. We don't always need to understand, we just always need to hold His hand to have peace in the middle of storms.

Police STOP at 2 AM

An elderly man is stopped by the police around 2 a.m. and is asked where he is going at this time of night. The man replies, "I am on my way to a lecture about alcohol abuse and the effects it has on the human body, as well as smoking and staying out late." The officer then asks, "Really? Who is giving that lecture at this time of night?" The man replies, "That would be my wife."

THE SURF -N- SEA ANNIVERSARY BLOW-OUT SALE! EVERY ITEM ON SALE!



Surfboards, Bodyboards, Stand-Up Paddleboards, Dive Gear, Clothing, Sunglasses, Leashes, Wetsuits, Watches, Shorts, Trunks, Footwear, Skateboards, T-Shirts, Jewelry, Fins, Racks, Boardbags, Snorkels, Masks, Spears, Hats, Backpacks, and ...
MUCH MUCH MORE!! EVERY ITEM IN THE STORE IS SALE PRICED!

Hawaii's Ocean Sports Headquarters!

DAILY SURFING AND STAND-UP PADDLING LESSONS, INTRO DIVES (NO EXPERIENCE NECESSARY)
SCUBA & SNORKEL GEAR, SHARK TOURS, 3 DAY PADI CERTIFICATION
HAWAII'S LARGEST SELECTION OF NEW & USED SURFBOARDS, WORLDWIDE SHIPPING AVAILABLE
RENTAL SURFBOARDS & BODYBOARDS, SURFBOARD PACKAGING & 24 HR. DING REPAIR

**637 - DIVE
(3183)**

**637 - SURF
(7873)**



PERFORMANCE LONGBOARDS

62-595 KAM HWY HALEIWA, HI 96712 • WWW.SURFNSEA.COM



THIS IS HOW YOU GET THERE. FIND THE OCEAN AT SURF N SEA!



**A Message From
State Representative
Gil Riviere**

Aloha and Mele Kalikimaka North Shore!

As 2011 draws to a close, I want to thank everyone for the opportunity to represent this district. I really enjoy my job! I enjoy the challenges that come my way every day and I enjoy working hard to get things done.

We have a tremendous community and it is difficult to contain my enthusiasm for the North Shore. With my monthly cable television program, "Gil Gets it Done!", I feature some of the great work that our residents and businesses are doing throughout the North Shore.

We talk about healthy food choices for children, an aviation program for kids, local farming, new businesses and technology, our champion robotics team, the Hawaiian Kids, Historic Haleiwa and more. The shows run on Oceanic Cable Channels 49 and 54 and are available on demand at GilRiviere. Info in the Newsroom section.

Gil Gets it Done! - 2011 Programs
Program 1. Farm to School

- Program 2. Kids Fly Free
- Program 3. Buy Local - It Matters
- Program 4. Waialua Coffee, Cacao & Soap
- Program 5. Malama Pupukea O Waimea
- Program 6. Kahuku Farms and Marine Agrifuture
- Program 7. Hawaiian Chariots and Hawaii Fish Company
- Program 8. Waialua High School Robotics
- Program 9. Historic Haleiwa

After deadline for the last article, I received a call from the Parks Director to let me know another public meeting will be scheduled on the proposed surf contest rules. This is good news because many people who have constructive suggestions on how to make the rules better were caught off guard by the lack of notice for the previous hearing. The meeting will be in Honolulu on January 5, 2012, from 2 to 4 p.m. See LetsSurfCoalition.org for information and updates.

Merry Christmas and best wishes for a healthy and happy New Year!

Our office is your office. Please feel free to visit Room 319 at the Capitol, call 586-6380, or email RepRiviere@Capitol.Hawaii.Gov whenever we can be of assistance. We have district news, information on homeless programs and emergency preparedness, links to previous news articles and our monthly TV show, "Gil Gets It Done!" online, and more at Gil-Riviere.Info. Mahalo.

**M
E R
R Y C
H R I S
T M A S
T O * O N E
AND
A L L**

**Dr. Clarence Y. Murata
Dr. Ken Nagahiro
OPTOMETRISTS
66-210A Kam. Hwy., Haleiwa • 637-5048**

**PEACE,
JOY &
HAPPINESS,
ALL!**

T.OTAKE & SONS
66-212 FARRINGTON HWY., WAIALUA

GOT surfboard?
Donate your old or no longer used surfboard or boogie board to
Operation: Toybox

Bring to the
North Shore News office
by December 23
637-3138

MELE KALIKIMAKA & HAU'OLI MAKAHIKI HOU

From Our Ohana to Yours,
We Wish You a Warm and Safe Holiday Season.



Gil Riviere[®]

This message is paid by: Friends for Gil Riviere 65-137 Hukilau Loop, Waialua, HI 96791

FARMER & THE BAKER INC.

(formerly Mokuleia Landscape & Nursery Co.)



Fruit & Flower Trees
Palms & Bamboo
Ornamental shrubs
and more...at great prices!

Call John (808) 341-1992

“Wishing our friends and neighbors a
joyous and peaceful holiday season”

from

Paul Saccoccio, Nita Lopez,
Steffanie & Anna

Saccoccio & Lopez
ATTORNEYS AT LAW

637-7611

**We Pay You
\$100
CASH & FREE
TOWING
for unwanted vehicles
(complete)
636-7183
North Side Towing**



**Merry
Christmas!**
from the
North Shore Food Bank
& Volunteers
Terry & Gloria Gerber
Mary Jane Smith, L. Coyle



Direct From Donovan State Senator Donovan Dela Cruz

As the Holiday Season is upon us, we take a moment to reflect on the year that is ending and I feel I have much for which to be thankful. I am thankful for those whose support and friendship have helped us through the year. And I am grateful for the many friends near and far who sent words of encouragement when we had some trying times. Your phone calls, texts, emails, and notes certainly made a difference and brightened my day.

I appreciated those of you who took the time to send your comments or concerns on a particular measure we were working on as it indicated that you were interested and your comments were valuable to me.

Although the overall big picture for the state demands our constant attention, we are also faced with challenges in our everyday lives. How do we improve the situation for the homeless, how do we lessen the burden on our residents who are trying to make ends meet every day, how do we make life better for residents now and for generations to come so

they don't feel the need to move elsewhere to find opportunities.

So as the year comes to an end, we look forward to greeting the new year with hopes for a better tomorrow for our state and with the resolve to work to make a difference.

And I feel blessed that I have the support of my family, friends, and everyone who have faith in me to work in their behalf and create a Hawaii that people are proud to call home.

I extend my best wishes for a very happy Holiday Season and a New Year filled with joy, peace and goodwill.

North Shore Food Bank

You can help feed the North Shore's homeless & hungry by donating non-perishable canned foods to the North Shore Food Bank located in the North Shore News Office above the Hale'iwa Post Office.

637-3138

Prefer to contribute financially?

Check can be made out to:

Once A Month Church

P.O. Box 117, Hale'iwa, HI 96712

TOP 5 MOST NEEDED ITEMS

- Financial Contributions
- Canned meats or tuna
- Canned meats & soups
- Canned vegetables & fruits
- Canned beans

No donation is too small.

501c3 non-profit

Great Last Minute Gift Ideas!

Baskets & Gift Bags available to make themed gifts such as

- Snack Packs
(senbei, li hing mui, candies)
- Wave Riders
(surf calendars, DVDs, stickers)
- Coffee Lovers
(Kona coffee, mugs, cookies)
- Hot & Spicy
(hot sauces, seasoned Hawaiian salts)
- Movie Night
(popcorn, mochi crunch, beef jerky)



Aoki's Shave Ice

66-117 Kamehameha Hwy.

Hale'iwa Hawaii

Store Hours: 11 a.m.-6:30 p.m. Daily

The Royal Hawaiian Band
will be playing at
the Waialua Bandstand

SUNDAY, JANUARY 8, 2012

4:00 PM - 5:00 PM

SPECIAL NOTE: This is the second Sunday of the month. Concerts are usually on the first Sunday of each month.

www.Waialuabandstand.com

Mele Kalikimaka E Hauoli Makahiki Hou!

Wishing all of the North Shore and Koolauloa
a bright and happy holiday season
From all of us at the
Koolauloa Community Health and Wellness Center.



Affordable health care for all at TWO locations:

North Shore Health Center

56-119 Pualalea Street, Kahuku
(808) 293-2441 • (808) 293-9231
Ko'olauloa Pharmacy • 293-9514

Hauula Kai Shopping Center

54-316 Kamehameha Hwy., Unit 6, Hauula
(808) 293-9216

Providers:

Robin Carter, Family Practice
Jason Hughes, Internist
Naty Hopewell, RN, Family Nurse Practitioner
Doug Sutherland, MD, Pediatrician
Trieu Ton, DDS

(Will soon have behavioral health services)



kaleimaeole Handcrafted Jewelry

Visit us at the North Shore Country Market
(Sunset Beach Elementary across from Pipeline)
Saturdays from 8-2
www.96712jewelry.com



Beautiful handcrafted jewelry from Oahu's North Shore. Each piece is handmade and unique, using fine silver, gold fill, precious and semi precious stones, Tahitian and freshwater pearls, suede, leather, beach glass and shells. Our silver comes from reclaimed sources and is not mined.

Our collection is on display and available for purchase at the North Shore Country Market and other venues on Oahu.

See our website for a complete calendar of events.

Photos by Val Loh

Cal & Kathy Yamamoto
and the crew at
Hale'iwa Service
offer a hearty



**Merry
Christmas
&
Happy
New Year**

*"Best wishes for
a prosperous 2012."*

Hale'iwa Service
Located at the Waialua Sugar Mill

North Shore's FULL SERVE auto repair
AC • Brakes • Transmission • Engine
Official Safety Check Station

637-4255

*Happy Holidays from
our ohana to yours!*



North Shore Equipment Rentals

Randy, Lee, Gary & Kawika

637-4600

"Why buy it when you can rent it?"

NOW OPEN.

First there was Surfer the magazine. Now there's Surfer the bar.
A stage for Hawaiian musicianship. A soapbox for talkstory.
A screening room for big wave film and photography.
A venue for special events. A podium for awards and accolades.

IT'S MORE THAN A BAR. IT'S AN ORIGINAL.

UPCOMING EVENTS

- DEC 14 **Talk Story Series featuring Simon Anderson**
Doors at 6pm, presentation at 8pm / \$5 donation requested
- DEC 15 **O'Neill Private Party** / Open to the public at 10pm
- DEC 16 **North Shore Lifeguards Association Private Party**
10pm-1am / VIP tickets available at Surf n Sea in Haleiwa
- DEC 17 **Fashion and Reggae Night!**
8:30pm, Fashion Show by Chama Swim-Wear by Sophia Beschen
9:30pm-11:30pm, "Half Pint" International Reggae Star!
11:30pm-1am, Club DJ
Tickets \$20 at Turtle Bay Concierge and Surf n Sea in Haleiwa
- DEC 21 **Talk Story Series featuring Peter "Joli" Wilson**
Doors at 6pm, presentation at 8pm / \$5 donation requested
- DEC 31 **New Year's Eve Bash** / No cover!

Located at Turtle Bay on Oahu's Fabled North Shore.

SurferTheBar.com 293.6000

surfer
[THE BAR]



North Shore surfer wins Triple Crown second jewel

John John Florence from Oahu's North Shore (pictured) proved his dominance at Sunset Beach, winning the Vans World Cup of Surfing in perfect two meter surf at Sunset Beach on Oahu's North Shore, Hawaii on Friday December 2, 2011. Florence was in supreme form all day, notching up a near perfect 9.50 barrel ride in the final defeating Michel Bourez (PYF), Adam Melling (AUS) and Hank Gaskell (HAW). Photo by Kelly Cestari/ASP

MAHALO to those who helped supply Holiday Turkeys for Operation: Aloha 2011

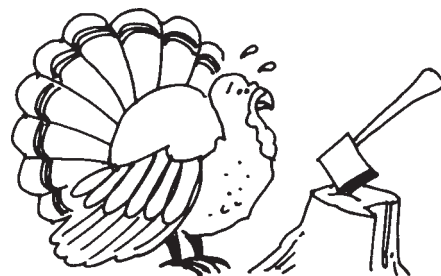
Held on Thanksgiving Day at Waialua Community Association

A Charitable Foundation
Aoki Shave Ice
Bikram Yoga
Sue Bliss
Jake Bradshaw Ohana
Kathleen & Kalae Bronco
Kathleen Campbell
Camp Erdman
Celebrity Tuxedos
Bob & Trish Coder
L. Coyle
Col. John & Peggy Cutting
Amber & Eric Doig
Dream Of A Better World
Julia Fetzer
Terry & Gloria Gerber
Sean Ginella
Haleiwa Art Gallery
Alfred & Dawn Hammons
John Hite

Jack Jenkins
Richard John
Solomon Kuewa
Liberty Tax Hawaii
Catherine Lo
Earle & Mary-Anne Long
Semisi & Norma-Jean Livai
Susan Matsushima
Reed Matsuura
Mike & Jan
NAP INC.
Nate & Donna Nathanson
North Shore Foundation
F.T. Operman, Trustee
Paalaa Kai Bakery
Barbara Ritchie
Gil & Elizabeth Riviere
St. Michael Church
Brian & Peachy Saito
Jean Saito

Bart Smith D.C.
Mary Jane Smith
Surf N Sea
The Estates at Turtle Bay
Turtle Bay Resort &
Chef Hector Morales
Steve Van Doran
Scott Wallace

& a few others who gave
anonymously and/or we didn't
get your name.



OPERATION: ALOHA

Thanksgiving Day 2011



Mahalo: Turtle Bay Resort, Waialua
Comm. Assoc. & Once A Month Church



TRISH CODER PHOTOS



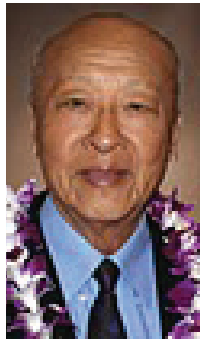


Council Chair
Ernie Martin
Serving You in District 2

During this holiday season, I would like to pay tribute to an individual with a remarkable story, one that reminds us of the value of hard work and the determination to succeed. It can also serve as a reminder that opportunities to improve our lives and the lives of those around us exist wherever we chose to find them.

You Soukaseum was born in the Republic of Laos on August 18, 1929 where he was a successful entrepreneur, with a thriving business in lumber and air cargo. At the height of his importing and exporting career, he was reduced to poverty. As a political refugee, stripped of all possessions except the clothes on his back, he immigrated to Hawaii in 1976 in search of a better life with his wife and three children. Without money or a working knowledge of the English language, he enrolled in an 18-month program sponsored by the Department of Labor to train refugees and new immigrants. Recognizing the strong demand for fresh produce in the local markets he decided to become a farmer and committed himself to learning everything he could about this new field. After four months he voluntarily removed himself from the government assistance, thankful for the aid but determined to be self-sufficient.

Mr. Soukaseum and his family worked 18-hour days on two farms before starting out on his own. He acquired a reputation for his innovative agricultural ideas such as rotating crops to restore the nutrients in the soil. Impressed by his achievements, Campbell Estate offered to lease Mr. Soukaseum 445 acres of land in Kahuku. After obtaining the master



lease, he sub-leased the land to 24 refugee families from Waimanalo. In addition to the land, he made available all the necessities such as startup capital, equipment and supplies and his expertise.

Frustrated with the lack of access to market his crops, in 1982 Soukaseum started You's Produce, a wholesale operation. Now managed by his son, this centralized outlet enabled him to consolidate produce from each farm and sell directly to supermarkets. As the business grew, Mr. Soukaseum leased additional land from Campbell Estate and provided opportunities to even more families. To date he has helped more than 200 Chinese and Laotian refugees become independent farmers. Moreover, his venture has helped to demonstrate the tremendous potential for agricultural development on the North Shore.

You Soukaseum always felt a great concern for the welfare of others. He is one of the founders and a past president of the Association of Chinese from Vietnam, Cambodia, and Laos, an organization that helps its members adapt to life here and become self-sufficient and successful. Convinced that education is the key to socioeconomic progress, he proudly supports the Laotian-American Scholarship Fund of Hawaii, which provides training and support to young Laotian-Americans. He was also the founding President of the United Chinese Coalition in 2004 and a founding member and Chairman of the Laos Buddhist Temple. Willing to share his success with others, Mr. Soukaseum he donates to numerous organizations, including the Hawaii Food Bank to which he has donated over 30,000 pounds of various vegetables every year since 2000.

The Honolulu City Council recently recognized You Soukaseum for being selected as the 2011 Model Citizen of the Year by The United Chinese Society of Hawaii, an honor he well deserves for his outstanding contributions to his community and to the state of Hawaii.

"Suddenly a great company of the heavenly host appeared with the angel, praising God and saying, 'Glory to God in the highest, and on earth peace to men on whom his favor rests.'"

St. Luke 2:13,14

DRAFTPLANS HAWAII

- Over 10,000 floor plans & blueprints available for purchase online. Gather ideas for your own design.
- Drafting Service available for new home designs, additions, renovations, decks, fence, rock walls, etc.
- Free property specifications & title search info.

www.draftplans.com

Call for free estimates:
265-0035



The Salvation Army Family Store
 - Wahiawa store only

**All clothing 50% off
 every day and
 \$.99 clothing specials
 on Fridays**

open Mon-Sat 9am-6pm
 subject to change

For more information contact:
 Barbara Millier at 808-522-400
 Located at 435 Kilani Street in Wahiawa



Mele Kalikimaka



Karin Moody-Tsutsui
Realtor
Ph: (808) 392-7410
KarinM@pruhi.com



*The North Shore,
A Way of Life.*

Are you . . .

- ~tired of waiting days or weeks for your vehicle?
- ~tired of wrong diagnosis?
- ~tired of taking your vehicle back again?
- ~ paying too much?

Give us a call . . . we can help!

ROB'S

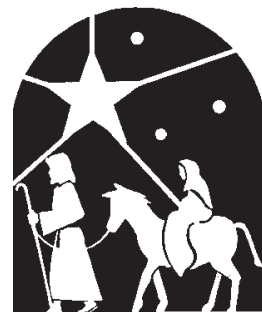
**Auto Repair Service
Moped & Small Engine
Repair**

- Licensed and Certified ASE Master Mechanic
- Computer and Electrical Specialist
- We work on all Makes and all Models

Serving the North Shore

(808) 330-0459

*Smile
God Loves You!*



*"For God so loved the world
he gave his only begotton son
that whosoever would believe in
Him would never perish but
have everlasting life." John 3:16*

*Dr. Todd R. Okazaki
Hale'iwa Family Dental*



David Sterman going pro in 2012

2011 was another great year for North Shore Skimboarder David Sterman. This past year he has competed in many amateur contests taking David to both coasts of the mainland and as far away as South America.

His top three finishes were:
1st Place: Zap Amateur World Championships / Dewey Beach, Delaware,

1st Place: Kauai Classic / Shipwreck Beach, Hawaii,
1st Place: Exile Oktoberfest / Newport Beach, California.

Next year David will begin his professional Skimboarding career.

LANIKAI JUICE HAWAII
Since 1997

Get YOUR FREE GIFT CARD Today!

Buy a Lanikai Juice Gift Card for \$25 or more and Receive a FREE Gift Card - as Our Gift To You

HALEIWA: 66-215 Kam. Hwy. 637-7774
KAILUA: 600 Kailua Rd. 262-2383
KAHALA: 4346 Waiālae Ave. 732-7200

FRESH PURE HAWAIIAN

Cholo's Homestyle Mexican Restaurant & Margarita Bar

Island Fresh Fish Tacos

Dine-In Take-Out
Burritos • Quesadillas • Nachos
Enchiladas • Fajitas

637-3059

OPEN EVERY DAY
10:30 a.m.-9:30 p.m.

All Major Credit Cards Accepted

Located in the North Shore Marketplace
66250 Kamehameha Highway Haleiwa, Hawaii 96712

"Hawaii's Best Little Mexican Restaurant"



**North Shore
Chamber
2011 Christmas Party at
Turtle Bay Resort - Dec. 1**



TRISH CODER PHOTOS

Turtle Bay Resort's SEIS Community Update

provided by Replay Resorts on behalf of Turtle Bay Resort

This article is the fourth in a series of updates to the North Shore News community about the ongoing progress of Turtle Bay Resort's draft Supplemental Environmental Impact Statement (SEIS) Preparation Notice and the Revised Plan (Revised Plan). Turtle Bay Resort (TBR) has the unique opportunity to honor and respect these lands and community by incorporating traditional Hawaiian cultural values into its environmental review process, planning and implementation of the Revised Plan. This series will focus on the critical cultural components of both the SEIS and Revised Plan. For more information and the latest news about Turtle Bay Resort's SEIS, please log onto www.turtlebayseis.com.

Elaborating on our previous updates of the various ahupua'a divisions and bays of Turtle Bay Resort, this update will provide an in depth look at preserving and maintaining access to Turtle Bay Resort's rugged coastline, one of the natural beauties of the North Shore. We believe it is our kuleana to preserve and protect this environmentally and culturally important resource. With this in mind, our proposal as outlined in the draft Supplemental Environmental Impact Statement (SEIS) Preparation Notice includes the building of Kawela Bay, Turtle Bay, Hanaka'ilio, and Kaihalulu Parks, all of which will enhance the

Turtle Bay lands as well as increase shoreline access to visitors, residents, and guests. You may log onto www.turtlebayseis.com to see the map of the parks.

Starting from the west side of the Turtle Bay lands with Kawela Bay, our proposal includes the construction of a Kawela Bay Park, which will include parking, showers, and a comfort station. Kawela Bay Park will provide ample space for visitors and community members to enjoy the beach as well as picnic area and tables.

Heading east, Turtle Bay Park will have typical park facilities and will also feature an outdoor amphitheater and small stage; this venue will have the flexibility to host events of differing sizes. When the venue is not being used for public performances, it'll be available to a local hula halau. And, at other times, the amphitheater will serve as an intimate setting for concerts of both local and nationally recognized artists. We will be enriching the park's cultural focus through planting native plants and landscaping, and the inclusion of a traditional canoe hale (house).

Kaihalulu Beach Park, conveniently situated in the center of Kuilima Bay and at the outlet of the rerouted Kawela Stream, will provide resort guests and community members easy access to Kaihalulu Beach. The park will be a perfect complement to the Hanaka'oe Ahupua'a, which is proposed as the physical and economic center of the Turtle Bay Lands as well as the site for all future hotel development.

Near the most eastern edge of the Turtle Bay lands, Hanaka'ilio Beach Park will include Kahuku Point, a place of rich cultural heritage. We seek to maintain the open space and passive nature of this park and will include parking, showers, and a comfort station. Additionally, development at Hanaka'ilio Beach Park will be focused on restoration of indigenous vegetation.

With every aspect of our Proposed Action, we endeavor to preserve, enrich, and perpetuate the native Hawaiian culture as much as possible. Additionally, we strive to continue providing the community access to the beautiful coastline and beaches while also extending opportunities for leisure, community fellowship, and cultural practice, offered in venues like the amphitheater.



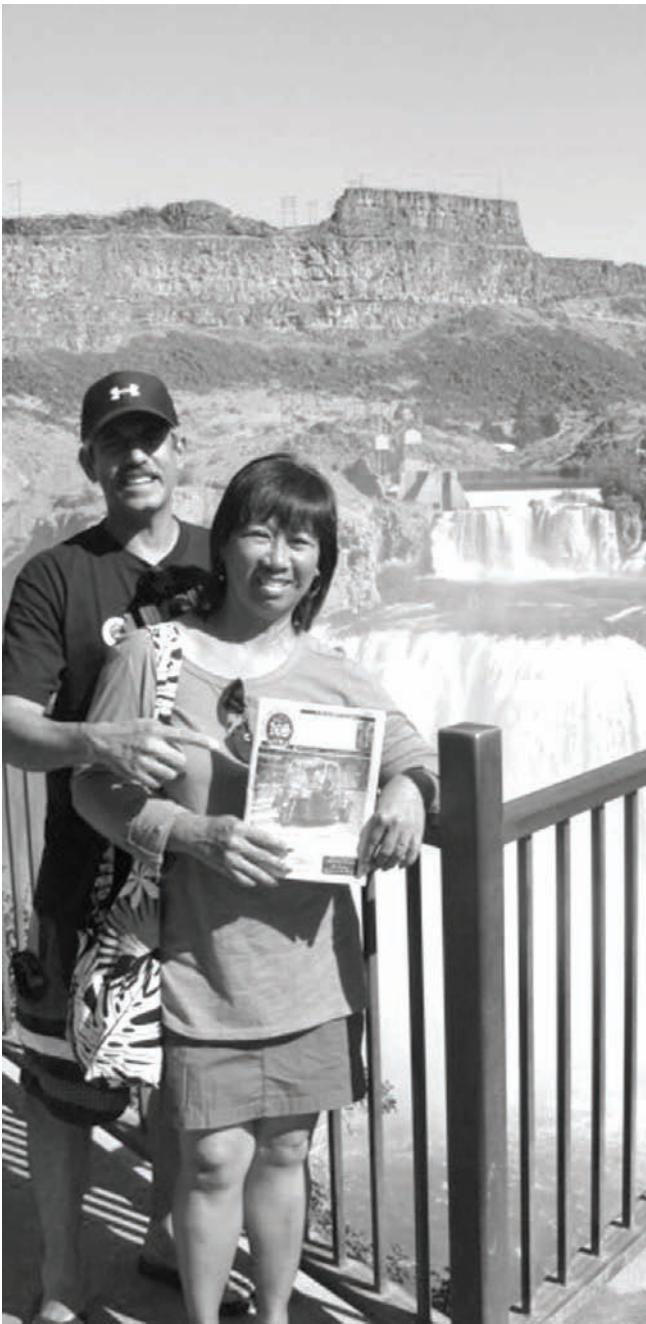
It's been cold lately!
Perhaps you have an
extra blanket or two,
used or new to donate to
our homeless neighbors.
Drop off blankets at the
North Shore News office.

A Warm Mahalo

342-3969

"...an angel of the Lord appeared to him in a dream and said, 'Joseph son of David, do not be afraid to take Mary home as your wife, because what is conceived in her is from the Holy Spirit. She will give birth to a son, and you are to give him the name Jesus, because he will save his people from their sins.'"

St. Matthew 1:20,21



OFF da Island in Idaho

Waiialua residents, Milton and Joslyn Hoopai, accidentally found Shoshone Falls, Idaho after dropping their daughter Sasha off at Boise State University several months ago. Sasha is an UH-Hilo student studying sociology and is part of a student exchange program for one year at BSU, she is also a 2007 Waiialua grad. After dropping their daughter off and feeling lost and lonely without her they spotted the waterfall and pulled out a recent copy of the NSN to remind them of all the good times back on Oahu's beautiful North Shore. To learn more about our OFF da Island photo campaign turn to page 39.



Happy Holidays!

Mahalo for the opportunity to serve you on the Honolulu City Council.

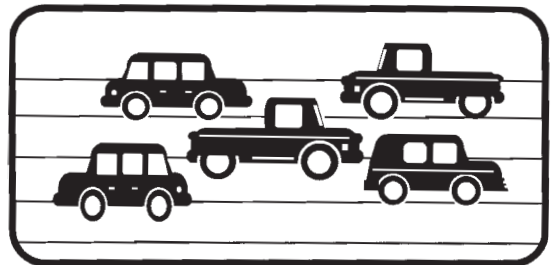
**Council Chairman Ernest Martin
& Melanie Martin**



Paid for by the Friends of Ernie Martin
P.O. Box 892727 Mililani, HI 96789

DONATE YOUR VEHICLE

running or not



Once A Month Church

a 501c3 charity serving the North Shore

Over 150 good used cars GIVEN to needy individuals possessing valid driver's license past 5 years.

342-3969
for more information

Once A Month Church



Pastor Ron Valenciana

2012 SCHEDULE

January 29	July 29
February 26	August 26
March 25	September 30
April 29	October 28
May 20	November 25
June 24	December 25

ALL SERVICES EXCEPT DEC. 25
at HALE'IWA BEACH PARK
for more info call

808-342-3969
oamchawaii@aol.com
www.onceamonthchurch.com



We're the church that gives to you!

Mahalo to the North Shore
community for all of your support
during the past year!

Mele Kalikimaka
and

Hau`oli Makahiki Hou
from the
`Ohana of Waimea Valley.

Clyde Namu`o, Richard Pezzulo, Hawley Alamodin,
Randy, Josie, Dee, Maile, Ah Lan, Gail, Hoku,
Tinker, Aunty Kanani, Sarah, David, Laurent,
Marvin, Dionicio, Severo, Rufino, Eddie, Lono,
Clifford, Ryan, Spencer, Bill, Darren, Spike, Fred,
Ricky, Andrea, Charlotte, Denise, Kiyomi, Desma,
Therese, Budde, Darrilyn, Palapala, Jasmine, Coco,
Josh, Kekai, Ellie, Antonio, Esther, Diane, Tasha,
Louise, Edwin, Elvie, Brandon, Kat.



CASH

FOR YOUR

ROLEX

GOLD & DIAMONDS
TODAY

OUR
BUYERS
ARE
HERE
ON THE
PREMISES



FROM
OUR
RETAIL
AND
COLLECTOR
DIVISION

TOP DOLLAR

FOR ROLEX AND OTHER
SWISS WATCHES, DIAMONDS, GOLD
ALL THIS WEEK

CALL **943-6210** PACIFIC DIAMOND
WATCH WHOLESALERS
1356 Kapiolani Blvd.



OFF the Island in Israel

Retired radiologist Anthony Kozma from Waialua recently took a tour of Israel and Petra in Jordan. He is pictured here near the plateau of Masada on the eastern fringe of the Judean Desert. The ancient Dead Sea scrolls were found nearby. He also discovered a recent copy of the NSN and enjoyed reading about the good times back on Oahu's beautiful North Shore. For more info on our OFF da Island photo campaign turn to page 39.

Oceanside Chapel Service at Turtle Bay Resort



Every Sunday at 9 a.m. in the beautiful oceanside wedding pavilion.

Hosted by Pastor Ron Valenciana

- Non-denominational 45 min. service
- Traditional & Contemporary music
 - 15 minute sermon
- Free gift to all first-time visitors
- All are welcome! Free validated parking

For more information call Pastor Ron at 342-3969.

*When church is pau, enjoy dining at the Palm Terrace, Hang Ten Pool Bar, or Lei Leis.

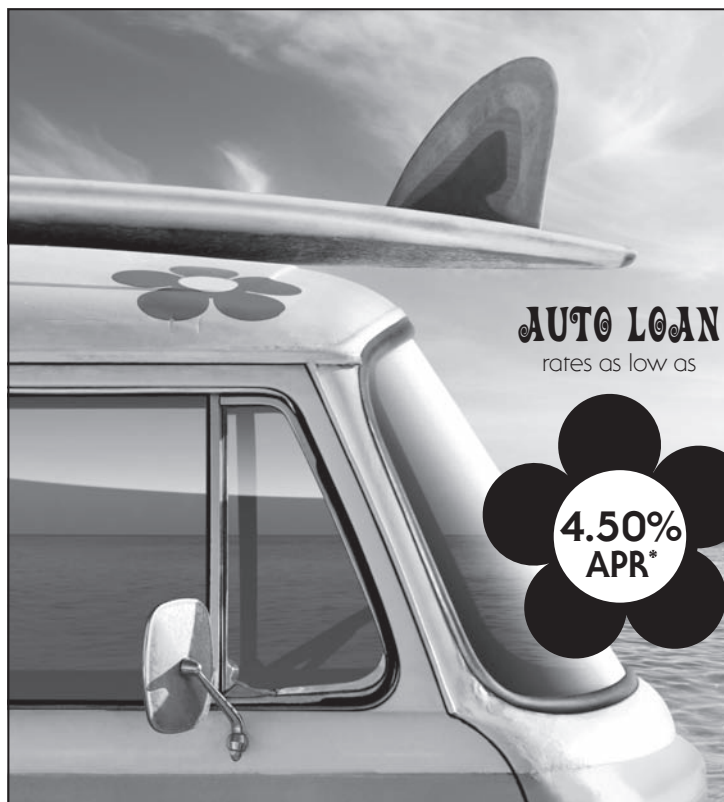


Seasons Greetings !

As the year comes to an end, I wish to take this moment to express my sincere appreciation for all the friendships, support, and encouragement I received throughout the year.

I am wishing all of you a Merry Christmas and a great New Year. May the joys of the season fill your heart with peace and goodwill and may your holiday season be happy and blessed with joy and hope.





AUTO LOAN
rates as low as

**4.50%
APR***

PEACE. LOVE. GROOVY RATES.

Get on board with Waialua Federal Credit Union's groovy rates on auto loans! Whether buying new or used, we'll help you dive headfirst into a great deal with auto loans featuring:

- Rates as low as 4.50% APR*
- Terms for up to six years (seven if the financed amount is over \$25,000)
- Financing for up to 100% of the dealer invoice

Apply today to ride the wave of a great auto loan! Call or stop by to speak with one of our friendly loan representatives.

WAIALUA FEDERAL CREDIT UNION

(808) 637-6737 • (808) 637-5980 • www.waialuafcu.com

*APR=Annual Percentage Rate.

NCUA



OFF da Island up high in Taipei

Asa Chun from Waialua recently traveled to Taipei, Taiwan for a 2-week vacation. While there he got really high. He is pictured here on the top floor of the Taipei 101 building. Until 2010 it was the highest building in the world. As they say "it gets a little lonely at the top." Wise Asa remembered to pack a recent copy of the NSN to remind him of off all the good times back on Oahu's beautiful North Shore. To learn more about our OFF da Island photo campaign turn to page 39.

DEPARTMENT OF PARKS AND RECREATION
CITY AND COUNTY OF HONOLULU

PUBLIC HEARING NOTICE

For the Repeal of the Amended Rules and Regulations Governing Use of City Beach Parks and Other Beach Properties Under The Control of the Department of Parks and Recreation To Provide Access to Conduct Shore Water Events And to Adopt Proposed City and County of Honolulu Administrative Rules, Title 19, Chapter 4, Shore Water Events

Notice is hereby given of proposed rule repeal, rulemaking and public hearing by the Department of Parks and Recreation, City and County of Honolulu, to consider the repeal of the Amended Rules and Regulations Governing Use of City Beach Parks and Other Beach Properties Under The Control of the Department of Parks and Recreation To Provide Access to Conduct Shore Water Events ("current rules") and the adoption of Proposed City and County of Honolulu Administrative Rules, Title 19, Chapter 4, governing shore water events ("proposed rules").

The Department of Parks and Recreation proposes to repeal the current rules regulating shore water events to be replaced by the adoption of new proposed rules governing shore water events. The proposed rules add new definitions and clarify existing definitions of activities subject to the rules, establish new permit application procedures, application requirements, application deadlines, and permit deposits, establish new regulations governing surf events held on the north shore, calendaring of north shore surf events, establish new criteria for resolving scheduling conflicts, new requirements governing indemnification and violation of the rules.

The proposed new rules are summarized as follows:

§19-4-3: Definitions have been added and existing definitions have been amended.

§19-4-4: Requires persons desiring to use a park to hold a shore water event to obtain a permit.

§19-4-5: Establishes new permit application procedures and criteria for denying a permit.

§19-4-6: Establishes minimum requirements for ocean safety staffing, sanitation, number of restrooms, insurance, deposits, security, and financial reporting.

§19-4-7: Establishes grounds for permit revocation.

§19-4-8: Establishes regulations governing shore water events including commercial announcements, fundraising activities, use of equipment and placement of personal property at the park.

§19-4-9: Establishes specific regulations governing surf events held on the North Shore, including limitation on the number of events, location of events, scheduling of events, length of events, and deadlines for submitting of permit applications for North Shore surfing events.

§19-4-10: Establishes the conflict resolution process, criteria and point system to be used in resolving scheduling conflicts.

§19-4-11: Imposes an indemnification requirement upon permittees.

§19-4-12: Adds a violation provision subjecting violators to penalties set forth in Revised Ordinances of Honolulu Chapter 10 and the prohibition on applying for a permit for one calendar year.

§19-4-13: Adds a severability provision.

A public hearing will be held on January 05, 2012, in the Mission Memorial Building Conference Room, 550 South King Street, Honolulu, Hawaii 96813, starting at 2:00 p.m. and ending at 4:00 p.m.

All interested persons are urged to attend the public hearing and present data, views, or arguments in the time limit provided, for consideration by the Department of Parks and Recreation. Persons unable to attend or wishing to present additional comments may mail written testimony to the Department of Parks and Recreation, Executive Services Division, 1000 Uluohia Street, Suite 309, Kapolei, Hawaii 96707, no later than January 12, 2012.

Interested persons may review the current rules to be repealed and proposed rules starting today and ending five days prior to the day of the public hearing during the hours of 7:45 a.m. to 4:30 p.m. at the Department of Parks and Recreation, 1000 Uluohia Street, Suite 309, Kapolei, Hawaii 96707.

A copy of the rules to be repealed and proposed rules will be mailed to any person who submits a written request to the above address and pays the required fee of \$1.88 for the cost of duplicating the documents and postage. A complete set of the current rules to be repealed and proposed rules is also available, free of charge, on the City's internet web site (see below).

The current rules are located at: <http://www1.honolulu.gov/parks/rules/shorewater.pdf>. The proposed rules are located at: <http://www1.honolulu.gov/parks/proposedshorewatereventrules.pdf>.

Individuals interested in attending the public hearing who have special needs or require special assistance may contact the Department of Parks and Recreation at 768-3006 or by writing to the above address, at least five (5) business days before the scheduled public hearing.

GARY B. CABATO, Director
Department of Parks and Recreation



BRIDAL EXPO HAWAII

January 20-22, 2012

Blaisdell Exhibition Hall

Show Hours:

Friday: 5:30 pm to 10 pm

Saturday: 10:30 am to 4 pm

Sunday: 10:30 am to 4 pm

Tickets: \$9.00



\$75,000 in prizes given away at the show!

Sponsored by:

Celebrity Tuxedos • Princess Brides • Liquid Light Images • Off Menu Catering
Spinning W.E.B. Florist • Wedding Planner 808 • IMF Visions
Vacations Hawaii • Big City Diner • Grand Finale Productions
Watanabe Florals • Pacific Diamond & Swiss Watch Exchange

BUCKLES PRODUCTIONS™

For more information go to BridesClub.com



BULLETIN BOARD



SEAMLESS ALUMINUM & COPPER RAINGUTTERS

"Let us Protect your Castle"

John Manning, President

930 Palm Place
Wahiawa, Hawaii 96786
Ph: (808) 638-7246
Fax: (808) 621-4633

Email: gutterking808@hotmail.com
Website: gutterking808.com
License: C- 23936

When it's time to tie the knot...

www.hawaiiweddingminister.com

informal beach weddings a specialty

(808) 342-3969

HAIR SPECIAL

Full Highlight and Cut \$100.00

GINA WALKER

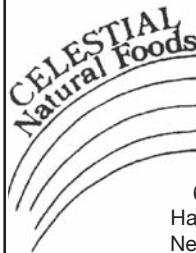
Hairdresser to the stars
from Malibu, CA

Senior Stylist & Color Master

Now at our new location

North Shore Salon & Spa

in Haleiwa Town 808-375-3984



Specializing in vegetarian foods, vegan foods, whole foods, organic food. Wheat free, dairy free, raw foods, gluten free. A complete selection of natural foods for 37 years. Make earth day, everyday.

Open 7 days.
Mon.-Sat. 9am-6pm.
Sun. 9am-5pm

66-445 Kam. Hwy

Haleiwa, Hawaii 96712

Next to the Post Office

808-637-6729 • 808-637-1922 fax

"THE BULLETIN BOARD THAT IS IN EVERYONE'S HOME"



Subscribe to the North Shore News

The North Shore News is delivered free to residents in Mokuleia, Waiialua, Haleiwa, Kawailoa, Waimea, Pupukeya, Sunset, Kawela, Kahuku, and Laie. A subscription is available for other cities on Oahu, Outer Islands, or Mainland U.S. or Alaska for just \$27.00 per year for 25 issues for delivery by standard bulk mail (2-3 weeks Mainland) or \$48 delivered by 1st class postage (3-5 days). You may subscribe by using check, money order or credit card (VISA, MC, AMX).

Mail North Shore News to:

Recipient _____

Address _____

City _____

Credit Card # _____

Expiration _____

Return this form with payment to:
North Shore News
66-437 Kam. Hwy. #210
Haleiwa, HI 96712

CLIP



How would you like your children to experience "Christmas" all year long?

Why not give them the opportunity to open up each day with wonderful "surprises" that will be met with expressions like as "cool", "wow", "look at this", or "I can hardly wait for tomorrow's lessons." Each day the children will have the chance to be excited about what will "jump out" of their study boxes to incite a deeper desire to learn. Their teachers, the gift givers, are ready to open up the whole world of treasures for them. All this will take place in classrooms in a beautiful setting at 59-578 Kamehameha Highway. Why not stop in to check it out for yourself?

**Come and join us to find out more about
Sunset Beach Christian School:
Thursday, January 5, 2012
6:00 p.m.
SBCCS Fellowship Hall**

North Shore News



2012 Schedule

PUBLICATION DATE

EDITION

DEADLINE DATE

January 11	#1	December 29
January 25	#2	January 12
February 8	#3	January 26
February 22	#4	February 9
March 7	#5	February 23
March 21	#6	March 8
April 4	#7	March 22
April 18	#8	April 5
May 2	#9	April 19
May 16	#10	May 3
May 30	#11	May 17
June 13	#12	May 31
June 27	#13	June 14
July 11	#14	June 28
July 25	#15	July 12
August 8	#16	July 26
August 22	#17	August 9
September 5	#18	August 23
September 19	#19	September 6
October 3	#20	September 20
October 17	#21	October 4
October 31	#22	October 18
November 14	#23	November 1
November 28	#24	November 15
December 12	#25	November 29

Direct-Mailed to Every Home

MOKULEIA • WAIALUA • HALE'IWA • KAHUKU • LAIE

Every Other Wednesday

12,000 copies

"The North Shore's most popular publication" since 1970

(808) 637-3138 • NShoreNews@aol.com

www.northshorenews.com

BULLETIN BOARD



Featuring the largest selection of certified organic produce on the North Shore.
 No panic...ours is organic.
 Open 7 days.
 Mon.-Sat. 9am-6pm.
 Sun. 9am-5pm

66-445 Kam. Hwy
 Haleiwa, Hawaii 96712
 Next to the Post Office
 808-637-6729 • 808-637-1922 fax



Robert Oakley **Owner**
 ASE Certified Master Mechanic Waialua, Hawaii
 Computer & Electrical Specialist (808) 330-0459

N-C PLUMBING & SUPPLY



Cont. Lic. No. C-8913

- RESIDENTIAL & COMMERCIAL SALES & SERVICE
- CONTRACTING & DESIGN • HOME PLUMBING SERVICE
- PLUMBING FIXTURES, HEATERS • FREE ESTIMATES

Nestor P. Calilao (Owner) Bus: 637-8662
 P.O. Box 769 Res: 638-5157
 Waialua, HI 96791 Cellular: 372-8718

email: nncplumbing@hawaii.rr.com

BOW WOW BUNGALOWS

Licensed Boarding Kennel
 North Shore, Oahu

Reasonable Rates • Ph. 637-2562

These Dogs Have Fun!

FMS

Financial Management Solutions
 Income Tax Services, Comprehensive Financial Services, and Insurance Planning

Complete Financial Services are available on-line.
 Please visit our website for more details.
 Virtual Office Address:

www.FMS-USA.com

Office: 1-855-753-7750 • Fax: 1-866-307-3330 • Email: amber@fms-usa.com
Amber M. Dols, Registered Representative, F.D. Vest Financial Services, Inc. Securities Offered Through F.D. Vest Investment Services SM, Member SIPC. A non-bank subsidiary of Wells Fargo & Company, 6333 North State Highway 161, Fourth Floor, Irving, Texas 75038, 972-870-6000

When it's time to tie the knot...

www.hawaiiweddingminister.com

informal beach weddings a specialty

(808) 342-3969

Munden Design & Build

Lic.#BC19632

Design • Plans • Permits • Construction
 Additions & New Residences
808 391-8616

Providing quality work since 1978



DR. PORTER TURNBULL

Chiropractic Orthopedist

(808) 638-8740

Appointments available Mon.-Sat.
(evenings by appointment)

- Industrial accidents & auto injuries
- Sports injuries • Spinal care
- Safe, Effective, and Gentle



"HONEST DEALS ON QUALITY CARS & TRUCKS"
 Established 1985

LINNE HOLMBERG

Owner

530 Paiea St.
 Honolulu, HI 96819

Lonestarmotorsportsllc.com

Honolulu: 834-0808
 Fax: 834-6602
 Cellular: 222-4272

LIC. #AC 18275



GENERAL ENGINEERING CONTRACTOR

Full Service Sitework
 Contractor

Septic Systems & Tanks
 25 yr. exp.

Michael Cowper 638-7200

cowperhawaii.com



CLASSIFIEDS

The North Shore News is published every other Wednesday and mailed free of charge to all North Shore homes and businesses. Extra copies may be obtained at our office.

PRESS RELEASE POLICY: Submit press releases in person or by fax, mail or email to Editor, North Shore News, P.O. Box 1117, Haleiwa, HI 96712. Please type your releases and keep them shorter than 200 words unless they are of an unusual news interest. Releases should be viable news stories and are published on a **space available basis only**, with priority given to those received in our office first. You may attach photos. We are not responsible for the return of any photos. All materials are submitted at owner's risk. We reserve the right to edit and/or refuse all submissions including advertising.

EDITORIAL POLICY: We welcome articles and letters from our readers. Letters to the Editor are published on a space available basis only and preference is given to shortness of length, and quality of content. We prefer to run not more than one letter, per person, per 6 month period. Letters subject to edit.

Views expressed by our contributing writers and advertisers do not necessarily reflect the view of the management and staff of the North Shore News. All rights reserved. Reproduction in whole or part without permission is prohibited. © 2011.

♥♥Need a minister for a North Shore wedding? Hundreds of knots tied for happy couples on Oahu. Simple beach-side ceremonies to formal church or chapel services. I'll make your special day an extraordinary memory. Call & leave clear message with phone number & possible date, time & place. 342-3969. Also: Vow renewals, house blessings, baby luaus.

PAUMALU ELECTRIC
David C. Hancock
638-9054 / Lic#C18074

SHORE ELECTRICAL SERVICE
New Const-Remodels
638-0049 / Lic#C20777

FREE Pregnancy Test
Above Haleiwa Post Office
Call for hours 779-4685

LGR Construction
Remodel • Repair • Design
Drafting • Painting • Small Jobs
Affordable rates. 343-4453/Lic#26759

Dog/Cat Nail Trimming
at your home only \$15.00
Call Julie 637-5395

Aloha Computer
PC Repair/Virus Removal
Fax/Copy/Internet Access
372-2667 or 237-4558

Lawn Care For You
Mowing, Trimming, Light Hedging
Call Thomas 637-5839

Ross McGerty BC24080
349-6359 • 637-9539
From Waiialua to Sunset
Make Me the First Call
for Home or Rental Repairs
or Renovations

EXPERT ELECTRICIAN
Fans, emergency services, etc.
Jim Richards 371-9369

PARADISE PLUMBING INC.
New Const • Repairs • Remodels
808-368-1473 / Lic. 29856

Holoholo Mobile Screens
New Screens • New Frames
Screen Repairs • Pet Proof Screens
Sliding Screen Doors • Affordable Rates
Call Today 783-8764

BEACH PLUMBING & ROOTER
Over 30 years experience
Call Larry 637-6400

Ohana Clean Up
Carpet Upholstery Cleaning
Pressure Washing
375-1814 • 979-5579

Handyman Services
Remodeling, Carpentry, Floors,
Concrete, all parts of Construction
Call Bob "The nicest guy in the
business" Ph. 282-2812

SULLIVAN PAINTING
Residential • Commercial • Int/Ext
Tommy 371-0998 Lic.#C31055

Seamstress
Rita Bell
497-3666

NO KA OI
Home & Land Maintenance
Window washing, power washing,
painting & staining, fix screens &
more. Free estimates. 446-1226

"CHANGE YOUR WATER
CHANGE YOUR LIFE"
Ionized Alkaline "Kangen" water.
For info call Jim Richards 371-9369

Haugan Construction LLC
Build & Repair – Big & Small
Let's Talk
Steve 542-9269

Any Kine Home Repairs
Complete home maintenance
service 638-1217
you name it we do it!

Carpenter, House Repair,
Termite Damage, Decks,
etc...Call Burr 286-0131

Bikram Yoga
Stretch, strengthen & stimulate mind & body.
All ages and levels.
Please call for class schedule
637-5700

North Shore Pumping
Cesspool & Septic Pumping
Complete Plumbing
Services, new & repairs
Lic. & insured #25567
638-0900 • 291-5089

N.S. Property Maintenance
Power wash, painting int/ext,
deck repairs, extensions,
fences, gates,
carpentry & remodels.
Maintenance, lawn & yard.
Chris 381-5213/638-0659

B.E. CONSTRUCTION
Dumptruck & Backhoe
Services
Equipment, dirt, rock,
green waste hauling
in and out
DEMOLITIONS
BRUCE ESCHE 783-9510

LEARN TO SWIM
AT THE
HAWAII SWIM
SCHOOL
ON THE NORTH SHORE
Developing swimmers since 1982
Haleiwa Rd. at Smiley Place
637-4863

Next Issue - Jan. 11, 2012
Deadline Date-Dec. 29, 2011

SUBSCRIPTION RATES

If you live outside the North Shore area on Oahu, neighbor islands, or the mainland, you can subscribe to the North Shore News. Our annual subscription rate is \$27 for 25 issues delivered by standard bulk mail (2-3 weeks), or \$48 for 25 issues delivered by first class postage (3-5 days). Call our office for payment information at (808) 637-3138.

HOW TO CONTACT THE NORTH SHORE NEWS

Letters to the Editor, and other items submitted for publication consideration may be sent to us via:

MAIL: P.O. Box 1117, Haleiwa, HI 96712

E-MAIL: NShoreNews@aol.com

FAX: (808) 637-8862

PHONE: (808) 637-3138

For Advertising Rates,
call
637-3138

PUBLISHER/EDITOR
RON VALENCIANA

TYPOGRAPHY
DOWNTOWN GENERAL STORE

BOOKKEEPING & CLASSIFIEDS
LINDA SEYLER

CONTRIBUTING WRITERS
RON VALENCIANA,
BUTCH HELEMANO,
NATY HOPEWELL

CLASSIFIED ADS

hawaiiweddingminister.com
342-3969
 31 years experience

Offshore Plumbing, LLC
 Commercial • Residential
 • Septic • Plumbing Design
 Mike Duenas, owner
 Lic #C28113
 630-1407
 Fax: 637-7870 • Office: 371-3451
 offshoreplumbing@yahoo.com

BOBBY'S BODIES
 Tuesday evenings at 5:00 p.m.
 • Body Toning
 Friday mornings at 9:00 a.m.
 • Cardio Pump/Fat Burner
 For more info: call Bobby, owner of BOBBY'S BODIES at 637-4150

Lisa Carley Skin Care
 637-9400
 lisacarley.com
 67-292 Goodale Ave. #104
 Waiialua Shopping Center

Your Clean Home
 Specializing in residential/vacation homes & property management.
 Experienced/reliable and affordable. Green cleaning safe for your family and our planet!!!
 808 638-0262 or 779-6604

THE LAWN RANGER
 Lawn Maintenance
 no yard too hard
 no lawn too far gone
 We mow betta
 258-6439 Dan Fatchett



Marianne Abrigo, Properties
 Specializing in -
 North Shore
 Real Estate
 Ask for our list of available properties and/or a free market analysis.
Marianne M. Abrigo
 "Realtor since 1974"
 Office 637-3511
 Fax 637-0777
 Email mabrigo222@aol.com

Automotive Services and Restoration
 • Auto Body & Paint
 • Detail & Shampoo
 • Upholstery
 Rick Estrada - 216-9419

HARVEY'S REPAIR, LLC
 24 hrs Towing Service
 Specializing in opening locked car doors
 Call any time 478-0333

GERMAN CAR SERVICE
 Professional-Qualified Technician
 Call Gary
 637-6800

ANGELS PLUMBING
 Repairs
 Remodeling
 Renovation
638-7878
 Lic. #C12004



SHIATSU • LOMI
 Aromatherapy
 Milica Barjaktarovic
 Lic # MAT8348
 351-0848
 HumanRemodeling.com

SEPTIC SYSTEM QUESTIONS?
 Free Initial Consultation
 Bear Engineering
 Nathan M. Toothman P.E.
 (808) 754-3579
 www.BearEng.com

Total Yard & Garden Care
 Grooming, pruning, and all other landscaping maintenance, services.
 Affordable & Reliable!!!
J&L Services 673-1384

Life Balancing/Health Coaching
 Custom Programs
 (FREE Consultation)
 Call Today: 808-351-8841

NEED TO ORGANIZE YOUR BUSINESS/HOME/LIFE?
 Hire a Project Manager – Personal Consultant
CALL TODAY: 808-351-8841

FOR SALE
 Plants Pupukea good prices shower & other trees, red ginger, ti, manila palms, heliconia, plumeria, laua'e, colorful shrubs.
 Delivery available 306-9307

FOR RENT
 Gmd Fl. Professional/retail Space 466sq/1,382.75/month Xcel Bldg. Haleiwa 779-7779

Beautiful, new 1 bed/1 bath on lush, tropical, gated estate. Full kitchen with pantry. Walk in tile shower. \$1800/mo incl. electric & gas. 1 year lease. No pets. Available 12/1/11. Email bluewatersharon@gmail.com or call (808) 237-4504.

HELP WANTED
BUSSERS/SERVERS
 Pizza Bob's in Haleiwa is looking for BUSSERS/SERVERS. Experience preferred. Apply in person at 66-145 Kam. Hwy.

COOKS/KITCHEN HELP
 Pizza Bob's in Haleiwa is looking for kitchen personnel. Experience preferred, but will consider training the right people. Apply in person at 66-145 Kam. Hwy.

Office Assistant Needed
 \$10.00 per hour up to 15 hours per week. Bookkeeping & QuickBooks experience required. Fax resume-808-293-9260. Email resume-KamaainaBookkeeping@gmail.com

HELP WANTED
Hairdresser Wanted.
Current license required.
291-1253

Tipsy Tow
 AAA Hawaii will again sponsor the New Year's Eve Tippy Tow program, which offers free rides to drivers who have been drinking. The service, which is available to nonmembers as well as members, will transport an impaired driver home up to five miles from the point of pickup. You may think you're okay to drive, but research shows that impairment starts with the first drink. Ask for a Tippy Tow by calling (800) AAA-HELP (222-4357). The service runs from 6pm Saturday, Dec. 31 through 6am Sunday, Jan. 1.

Farm seeking responsible hard working individuals. Work included but not limited to harvest, prune, clean & prep w/ flexible hours. Leave a message.
Call 707-200-1375

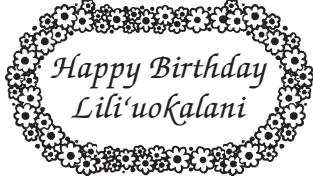
Retail Sales Surf & Sea
 Hawaii's Ocean Sports Headquarters is always looking for hard working, energetic people to become a part of our sales team. Good pay, bonus, benefits. Ocean sports experience and/or bilingual a plus. Apply in person daily 9am-7pm
 62-595 Kam. Hwy., Haleiwa

MISCELLANEOUS
 NS Seventh Day Adventists
 Saturdays 9:15-12:15
 67-174 Farrington Hwy.
 (WUCC, next to WHS)
 Info: 638-8209

A CALL TO ASPIRING WRITERS!
 Do you want to share the love of writing, exchange ideas, expand one's knowledge or need inspiration? The Writer's Discussion Group meets regularly the second Saturday of each month, 11:00 a.m. at the Waiialua Public Library. Sponsored by the Friends of Waiialua Public Library. For information call 637-8286.

OPERATION: TOYBOX
 Santa needs your help to provide toys for homeless & needy keiki this coming Christmas morning.
 Drop off toys at North Shore News 637-3138.

This Holiday Season be sure to BUY HAWAIIAN Purchase local-made products. Patronize local Businesses.



CLASSIFIED ADS

Recycle Plastic Caps & Lids

and help save seabirds

Recycle caps & lids are being accepted at:
Goodwill Industries of Hawaii
Wahiawa
823 California Ave.
Monday-Sunday
9 a.m. - 5 p.m.

For information:
www.b-e-a-c-h.org/recycling
Ph: (808) 393-2168

Program Events at Waialua Public Library

Writers Group meets the 2nd Saturday at 11:00 a.m.

Book Sale is the 3rd Saturday at 9:00 a.m.

Book Discussion meets the 4th Thursday at 9:30

Basic Internet Instruction, Fridays at 10:00 a.m.

Children's Story-time & Craft Activity, Saturdays at 10:00 a.m.

Toddler Time, Parent Directed (Educational toys available), Fridays at 10:00 a.m.

For more information, please call the library at 637-8286. Sponsored by the Friends of Waialua Library. Closed on State approved Holidays.

Public Hearing for Surf Contest Rules

A public hearing will be held on January 05, 2012, in the Mission Memorial Building Conference Room, 550 South King Street, Honolulu, Hawaii 96813, starting at 2:00 p.m. and ending at 4:00 p.m.

All interested persons are urged to attend the public hearing and present data, views, or arguments in the time limit provided, for consideration by the Department of Parks and Recreation. Persons unable to attend or wishing to present additional comments may mail written testimony to the Department of Parks and Recreation, Executive Services Division, 1000 Uluohia Street, Suite 309, Kapolei, Hawaii 96707, no later than January 12, 2012.

Interested persons may review the current rules to be repealed and proposed rules starting today and ending five days prior to the day of the public hearing during the hours of 7:45 a.m. to 4:30 p.m. at the Department of Parks and Recreation, 1000 Uluohia Street, Suite 309, Kapolei, Hawaii 96707.

REUNIONS

The NSN is happy to publish your school or family reunion Free of charge.
Email your announcement to NSHoreNews@aol.com.

Ho'ola Like

"Healers Working Together"
Waikiki Health Center's North Shore Clinic
Majority of Insurance Plans Accepted
No Insurance • Sliding Fee Available
Open Tuesdays and Thursdays
8:30 am to 3:30 pm
Walk-ins are Welcome
Emerson Hall, Queen Liliuokalani Church
66-090 Kamehameha Highway, Haleiwa
Call 284-5212 for an appointment.

Waialua Farmers Co-op Market

Fresh Waialua-grown produce plants & more at the Waialua Sugar Mill
Sat. 8:30 a.m. - 2 p.m.
Wed. 4:30 p.m. - 7 p.m.

North Shore Farmers Markets

Haleiwa: 9 a.m. to 1 p.m. Sundays, at traffic signal on the old Kamehameha Hwy at the bypass road.

Waialua Sugar Mill: 8:30 a.m. to noon Saturdays & Wednesdays 4:40 p.m. to 7:00 p.m.

North Shore Country Market: 8 a.m. to 2 p.m. Saturdays, Sunset Beach Elementary School, 59-360 Kamehameha Hwy.

Laie: 11 a.m. to 2 p.m. June 24, July 8 and 23, Brigham-Young University-Hawaii, 55-220 Kulanui St.

Hawaiian Humane Society

(808) 946-2187
Animal Rescues & Investigations 356-2250
Dog Licensing 356-2227
Donations & Gifts 356-2221
Education 356-2206
Pet Adoptions & Lost & Found 356-2218

BEACH CLEAN UP

Chun's Reef - 10 a.m.
637-2211
Last Saturday of every month
adoptabeachhawaii.org

Save Sea Turtles Use Reusable Bags

www.b-e-a-c-h.org

OFF da ISLAND

Are you leaving Oahu on vacation or business? Do you live on a neighbor island, the mainland or foreign country and subscribe to the North Shore News? Try send us a photo of someone in front of a sign or landmark holding a copy of the NSN. Email your photo along with the person or persons' name, community of residence, telephone number and photo location to: NSHoreNews@aol.com. Or, mail to OFF da ISLAND Photo, North Shore News, P.O. Box 1117, Hale'iwa, HI 96712. We cannot return photos so please send us a copy. Photos received become the property of NSN. Preference and priority will be given to emailed photos.

IGREJA EVAN. BRASILEIRA

Domingos 10:00 am
Quartas 7:30 pm
Sextas-Culto de Oraçao 7:30 pm

Voce e o nosso convidado especial

Behind Hale'iwa Post Office
637-5566
Pastor Luiz • 638-2212

The Waialua Community Association (WCA) will be conducting its Annual General Meeting on Wednesday, January 25th, 2011 with a meet and greet from 6-7pm, at which time the meeting with commence at 7pm. At this meeting, we will be voting for new trustees and handing out a copy of the proposed amendments to the current By-laws

On Wednesday, February 22nd, 2011 a special meeting will be held for membership approval to accept the amendments to the current By-Laws. All dues paying members as of 12/31/2011 will be eligible to vote at both meetings. Please visit www.waiuacommunityassociation.org to complete the membership form or visit the WCA Office at 66-434 Kamehameha Hwy, across the Haleiwa Post Office for more information.

Statewide Hotline for Litter

1-888-592-2522

Callers need to provide:

1. License plate number
2. Make and model of vehicle
3. Date and time and location
4. What was thrown/blown



Business Services Center

Fast & convenient fax, copy, scan, computer/internet, laminate, etc.

Across from Haleiwa post office.
North Shore Chamber of Commerce
637-4558 or 342-8557

Please Report Stranded Sea Turtles

Call 983-5730 • Mon.-Fri., 7am-4pm
288-5685 pager wkends, holidays
587-0077 and after hours
Suspected Law Violations
541-2727 or 800-853-1964
NOAA Fisheries DLNR-DOCARE

Keep it Country To report ILLEGAL VACATION RENTALS

call 768-8159 or 768-8118
You will remain anonymous
Illegal Vacation Rentals are ruining the North Shore
www.savenorthshoreneighborhoods.com

The Lords House Pentecostal Church

Wednesday Bible School 7pm
Sundays 10am & 6pm
136 Wiilikina Drive
Wahiawa, HI 96786
Info: 808-621-5989

Got a broken topload washer or dryer?

Don't trash it call us at Washcycle Hawaii
778-2450

Outreach Services

Persons with Disability
Advocacy Benefits Housing
HCIL 54-113 Kawaipuna St.
Hauula, HI 96717
Ph. 293-9775 or 293-9777

Happy Holidays!



MALAMA MARKET HALEIWA:
OPEN DAILY 7 AM-9 PM
808.637.4520

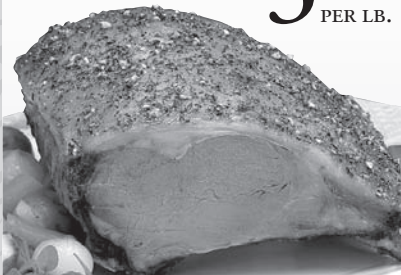
MALAMA MARKET MAKAKILO:
OPEN DAILY 6 AM-10 PM
808.672.9955

Valid Dates:
12/14/11-12/20/11

Navel Orange **99¢**
PER LB.



Rib Eye Roast **\$5.88**
Bone-In PER LB.



Ocean Garden Shrimp, 41/50 ct. **\$19.99**
5 lb. Box, Frozen EACH



Coca-Cola **\$4.77**
Selected Varieties, 12/12 oz.



Yoplait Yogurt **10/\$7**
Selected Varieties, 4-6 oz.



Tostitos Tortilla Chips **2/\$5**
Selected Varieties, 9.75-13 oz.



DiGiorno Rising Crust or California Pizza Kitchen **2/\$12**
Thin Crust Pizza

Selected Varieties,
11.5-12"



Meadow Gold Drinks or Tea **88¢**
Selected Varieties, 1/2 Gal.



All Liquid Laundry Detergent **\$4.99**
Selected Varieties,
50 oz.



Pepsi **2/\$3**
Selected Varieties,
2 Ltr.



Holiday Single Layer 8" Decorated Cake **\$7.99**
Yellow or Chocolate EACH



Huli Huli* Chicken Whole Roaster **\$6.99**
*Used with Permission EACH

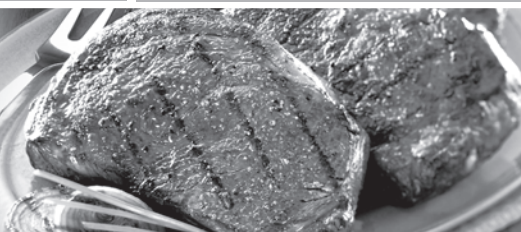


Budweiser, Bud Light, Coors, Coors Light, or Miller Lite **\$23.88**
30 Pk. Cans



THURSDAY

INCLUDES:
7-8 oz. Steak
Rice • Tossed Salad • Drink



Grilled Steak
LUNCH
\$6.99

Hawaii Beverage Fee
Hawaii Beverage Fee of 1¢ per can or bottle will be added to purchase price at checkout. An Additional Beverage Expense fee of 1¢ will be charged for all specially marked beverage containers.

Limit five units (mix/match) per purchase, unless otherwise specified. We reserve the right to limit quantities. No sales to dealers. Prices plus applicable state tax. Hawaii EBT cards welcomed.