



"E Ala Na Moku Kai Liloloa"

**OPERATION: TOYBOX
Needs your help!**

Please help Santa by donating new toys to this year's Operation: Toybox. Your presents will be distributed to needy keiki on Christmas morning.

See page 8



NORTH SHORE NEWS November 30, 2011 VOLUME 28, NUMBER 24



Taj Burrow is carried up the beach after claiming the first jewel in the 2011 VANS Triple Crown of Surfing. Image Credit: © ASP/ Cestari

Aussie wins first jewel of '11 Triple Crown

Australian Taj Burrows claimed the first jewel in this year's Triple Crown of Surfing on November 23, 2011 by winning the Reef Hawaiian Pro at Hale'iwa

Alii Beach. Burrow claimed his first event victory of the year when he posted the events third highest heat total of 16.90 (out of a possible 20.00) in the final

to defeat Adam Melling (AUS), Adriano De Souza (BRA) and Nat Young (USA) and claim the prize purse of US\$25000. Burrow leads the VANS Triple Crown ratings heading into the next event at Sunset Beach.

The Reef Hawaiian Pro is the first Jewel of the \$830,000 Vans Triple Crown of Surfing. For more information log on to www.triplecrownofsurfing.com

66-437 Kamehameha Hwy., Suite 210
Hale'iwa, HI 96712

PRE-SORTED
STANDARD
U.S. POSTAGE PAID
Honolulu, Hawaii
Permit No. 1479



OFF da Island in Vietnam

NSN visits humanitarian project in Vietnam. George & Myphuong (holding NSN) Atkins of Waiialua and owners of Hale'iwa Art Gallery & Oceans in Glass often travel to Vietnam to provide fresh water wells for poor rural hamlets of the Meakong Delta. After starting this project on their own they now are funded in partners with BASAID, a European group. This year marks completion of the 30th well. The Atkins also maintain a home on the Meakong river and also work with orphanages, food distribution, and dental programs for children & aged. For more info on our OFF da Island photo campaign turn to page 23.



Subscribe to the North Shore News

The North Shore News is delivered free to residents in Mokuleia, Waiialua, Haleiwa, Kawailoa, Waimea, Pupukea, Sunset, Kawela, Kahuku, and Laie. A subscription is available for other cities on Oahu, Outer Islands, or Mainland U.S. or Alaska for just \$27.00 per year for 25 issues for delivery by standard bulk mail (2-3 weeks Mainland) or \$48 delivered by 1st class postage (3-5 days). You may subscribe by using check, money order or credit card (VISA, MC, AMX).

Mail North Shore News to:

Recipient _____

Address _____

City _____

Credit Card # _____

Expiration _____

Return this form with payment to:
North Shore News
66-437 Kam. Hwy. #210
Haleiwa, HI 96712

CLIP



Cholo's Homestyle Mexican Restaurant & Margarita Bar



Island Fresh Fish Tacos

Dine-In Burritos • Quesadillas • Nachos
Take-Out Enchiladas • Fajitas

637-3059

OPEN EVERY DAY
10:30 a.m.-9:30 p.m.



**"Hawaii's Best Little
Mexican Restaurant"**

All Major Credit Cards Accepted
Located in the North Shore Marketplace
66250 Kamehameha Highway Haleiwa, Hawaii 96712

Aloha,

I'm Danna Holck, daughter of Wilbert "Sandy" Holck and Chisato Holck; fraternal granddaughter of Fred Holck and Mary Ann (Meleana) Honuiwakalani Kaleipahula Holck from Moloka'i, Hawai'i and maternal granddaughter of Toshito and Koto Maebo, immigrants from Hiroshima, Japan.

In June of this year I joyfully returned to my native Hawai'i as the General Manager of Turtle Bay Resort. In mid December, as one of my early tasks, we will be revealing the resort's new symbol to the world. But, before we do, we're sharing it with you.



You'll recognize the symbol as Pipeline, one of the planet's most identifiable natural features, known not only to surfers but also to adventure travelers from around the globe. It's our goal in the months and years to come to make certain that more of the world gets to know the North Shore not only as a mecca for waveriders but also as a place equally as well known for its glorious countryside, its special relationship between land and sea, its ancient history, and its true expression of aloha spirit.

It's also our objective to welcome residents of the North Shore into Turtle Bay as visitors and guests as well as colleagues who will have the opportunity for professional growth in the hospitality sector. To see what's taking place at Turtle Bay, we invite you to visit **Surfer, The Bar**. Surfer officially opened November 15th and is part of an ongoing multimillion dollar refreshing of the resort and the hotel. Our partner in Surfer is *Surfer* magazine and like us, *Surfer* believes that the North Shore truly is a fabled place. They've said so in the pages of their magazine, as have *Travel + Leisure*, *Frommer's Guide* and countless other publications. We are fortunate to live, work and play in such a distinctive part of Hawai'i and the wave is symbolic of that distinctiveness and also of the very positive transformation that's taking place at the resort.

As for the turtles that were our original symbol, they're still here as our heirloom brand. But did you know that Turtle Bay's first symbol, when the resort opened almost 40 years ago, was - you may be old enough to remember this - Pipeline. The past becomes the future again.



Mahalo.



Danna Holck, General Manager
808-293-6054
dholck@turtlebayresort.com

The Hale'iwa Family Dental Center, Ltd.



presents

"Comfort Dentistry" including—

- Relaxation Glasses
- Television Glasses
- Caring Staff
- Special Medication to help you relax
- Laser Cavity Detection
- New Patients Welcome!

Your teeth are much too important to neglect.

Call: 637-9652
for your reservation

We're conveniently located behind First Hawaiian Bank
in the heart of Hale'iwa.

Editor's Choice

"It's the Law"

(Author Unknown)

Law of Mechanical Repair - After your hands become coated with grease, your nose will begin to itch and you'll have to pee.

Law of Gravity - Any tool, nut, bolt, screw, when dropped, will roll to the least accessible corner.

Law of Probability - The probability of being watched is directly proportional to the stupidity of your act.

Law of Random Numbers - If you dial a wrong number, you never get a busy signal and someone always answers.

Variation Law - If you change lines (or traffic lanes), the one you were in will always move faster than the one you are in now (works every time).

Law of the Bath - When the body is fully immersed in water, the telephone rings.

Law of Close Encounters - The probability of meeting someone you know increases dramatically when you are with someone you don't want to be seen with.

Law of the Result - When you try to prove to someone that a machine won't work, it will.

Law of Biomechanics - The severity of the itch is inversely proportional to the reach.

Law of the Theater & Hockey Arena - At any event, the people whose seats are furthest from the aisle, always arrive last. They are the ones who will leave their seats several times to go for food, beer, or the toilet and who leave early before the end of the performance or the game is over. The folks in the aisle seats come early, never move once, have long gangly legs or big bellies and stay to the bitter end of the performance. The aisle people also are very surly folk.

The Coffee Law - As soon as you sit down to a cup of hot coffee, your boss will ask you to do something which will last until the coffee is cold.

Murphy's Law of Lockers - If there are only 2 people in a locker room, they will have adjacent lockers.

Law of Physical Surfaces - The chances of an open-faced jelly sandwich landing face down on a floor, are directly correlated to the newness and cost of the carpet or rug.

Law of Logical Argument - Anything is possible if you don't know what you are talking about.

Brown's Law of Physical Appearance - If the clothes fit, they're ugly.

Oliver's Law of Public Speaking - A closed mouth gathers no feet.

Wilson's Law of Commercial Marketing Strategy - As soon as you find a product that you really like, they will stop making it.

Doctors' Law - If you don't feel well, make an appointment to go to the doctor, by the time you get there you'll feel better.. But don't make an appointment, and you'll stay sick.

KUA AINA



The Best!

• IN HALEIWA •

637-6067

• IN HONOLULU •

591-9133

AT WARD CENTRE

HALEIWA • TOKYO • HONOLULU • LONDON

BREAKFAST
7 AM to 11 AM DAILY



Haleiwa Shopping Plaza - 637-5095

PLUS \$2.00 Off with this Coupon

Some Restrictions Apply. See Restaurant for Details.
When Ordering Regular Priced Items. Good Anytime. One Coupon Per Person.
Can Not Be Combined with Other Discounts. Expires 12/31/2011.

Oceanside Chapel Service at Turtle Bay Resort



Every Sunday at 9 a.m. in the beautiful oceanside wedding pavilion.
 Hosted by Pastor Ron Valenciana

- Non-denominational 45 min. service
- Traditional & Contemporary music
 - 15 minute sermon
 - Free gift to all first-time visitors
- All are welcome! Free validated parking

For more information call Pastor Ron at 342-3969.

*When church is pau, enjoy dining at the Palm Terrace, Hang Ten Pool Bar, or Lei Leis.



50¢ OFF FIRST BEVERAGE WITH FLYER

SURFERS COFFEE BAR
 • WAHIAWA HAWAII •

"MORE THAN A CUP OF COFFEE"

63 Kamehameha Hwy • Wahiawa, HI • 96786

Hours of Operation
 6am-10am Monday-Friday
 &
 6pm-10pm Monday-Saturday

SURFERS COFFEE BAR IS A NON-PROFIT NEIGHBORHOOD COFFEE SHOP LOCATED IN WAHIAWA FEATURING FAIR TRADE COFFEE AND TEA, ART, LIVE MUSIC, AND COMMUNITY EVENTS.

DRAFTPLANS HAWAII

- Over 10,000 floor plans & blueprints available for purchase online. Gather ideas for your own design.
- Drafting** Service available for new home designs, additions, renovations, decks, fence, rock walls, etc.
- Free** property specifications & title search info.

www.draftplans.com

Call for free estimates:
265-0035

Saccoccio & Lopez
 ATTORNEYS AT LAW
 Serving Haleiwa since 1984

Bankruptcy
 Personal Injury • Criminal Law
 Landlord/Tenant
 Traffic Offenses • DUI

Family Law
 Adoption • Custody • Divorce
 Paternity • Guardianship
 Deeds, and Wills

637-7611
 VISA/MC Accepted
 Above the Haleiwa Post Office

Paul & Nita

Polynesian Treasures

Hawaii's largest selection of Polynesian handicrafts and Hawaiian inspired gifts.

North Shore Marketplace • Haleiwa, Hawaii
 Open daily from 10 a.m. • 808-637-1288

MELE KALIKIMAKA
 from your friends at
PAALAA KAI BAKERY

EARLY HOLIDAY SPECIAL CLIP & SAVE!

Purchase (2) 10oz. coconut peanut butter and receive....

15% OFF ALL ITEMS IN OUR DELI SECTION

This offer cannot be combined with other offers or discounts. Offer expires December 7, 2011.

www.pkbsweets.com

Olakino Maika'i

(Good Health)

by Naty Camit Hopewell

Bell's Palsy

Bell's Palsy is a form of facial paralysis caused by an inflammation of the nerve controlling the facial muscles. Several conditions can cause paralysis of facial muscles, such as stroke, a brain tumor, or Lyme's disease. If no specific cause is identified, the condition is called Bell's Palsy. It is the most common cause of facial nerve paralysis.

The annual incidence of Bell's Palsy is about 20 in 100,000 people. It affects about 40,000 people in the U.S. every year. The incidence increases with age and is more likely to occur in diabetics and pregnant women (3 times more than non-pregnant women.).

Bell's Palsy usually affects only one side of the face and is self-limiting. It is characterized by a sudden onset (often overnight) and facial drooping caused by a malfunction of the facial nerve. This nerve controls smiling, frowning, blinking and closing of the eyelids, lifting the eyebrows and the taste sensation of part of the tongue. Consequently, the result is a lopsided looking face.

In one study, 85% showed first signs of recovery within 3 weeks without treatment. For the other 15%, recovery occurred in 3-6 months. Around 9% of patients suffer some residual symptoms, such as muscle spasm, contractions of the muscles, ringing in the ears or tearing of the eyes.

Although treatment may be unnecessary, severe cases may require treatment, especially where there's complete paralysis and the person is unable to close his/her mouth or eyes. Steroids have shown to be an effective treatment, but it has to begin within 3 days of the onset of symptoms.

Turtle Bay Resort's SEIS Community Update

provided by Replay Resorts on behalf of Turtle Bay Resort

This article is the third in a series of updates to the North Shore News community about the ongoing progress of Turtle Bay Resort's draft Supplemental Environmental Impact Statement (SEIS) Preparation Notice and the Revised Plan (Revised Plan). Turtle Bay Resort (TBR) has the unique opportunity to honor and respect these lands and community by incorporating traditional Hawaiian cultural values into its environmental review process, planning and implementation of the Revised Plan. This series will focus on the critical cultural components of both the SEIS and Revised Plan. For more information and the latest news about Turtle Bay Resort's SEIS, please log onto www.turtlebayseis.com.

Turtle Bay Resort is home to three distinct North Shore Bays: Kawela Bay, Turtle Bay, and Kuilima Bay. The water quality in these areas has been studied regularly for the past twenty years and turbidity (presence of sediment) continues to be a persistent problem in the eastern extreme of Kawela Bay. Our Proposed Action includes rerouting Kawela Stream which will return it to the approximate location of its historical channel.

During the plantation era, Kawela Stream was diverted into Kawela Bay, from its natural outlet into Turtle Bay, for irrigation purposes. While Turtle Bay has strong currents that quickly flush stream borne sediment out to sea, this is not the case with Kawela Bay. The offshore reefs that protect Kawela Bay from the forces of the ocean limit water circulation within the bay and inhibit sediment dispersion. With every heavy rain, the sediments in the bay increases and is often slow to dissipate.

Our Proposed Action of rerouting Kawela Stream is anticipated to have a significant favorable impact on the water quality in Kawela Bay because the source of much of the sediment load entering the bay will be removed. Furthermore, it is anticipated that with time, sediment on the floor of the bay will eventually flush out to sea.

Our goal is to improve near-shore water quality. Short-term impacts will include some water quality degradation resulting from short-term construction activities, operational impacts pertaining to storm runoff and drainage control. These impacts are not anticipated to be significant because best management practices will continue to be employed during operational activities and anticipated construction activities. The possibility of significant adverse impacts will be outlined in the Draft Supplemental Environmental Impact Statement (SEIS).

Furthermore, although a 1986 Special Management Area Use Permit allows for the development of up to 1,000 hotel units in the Opana-Kawela ahupua'a (you may view the map at <http://turtlebayseis.com/the-plan/resort-plan/>), because of strong public sentiment in preserving Kawela Bay, our Proposed Action includes two projects with a total of 225 resort residential units in an area of approximately 60 acres. No Hotels. Additionally, all buildings will be set back a minimum of 300 feet from the certified shoreline from Kawela Bay and along the shoreline east of Kawela Point, all buildings will be set back a minimum of 150 feet.

You may log onto www.turtlebayseis.com for more details about the SEIS Preparation Notice and more details of our Proposed Action.

North Shore Salon & Spa

66-160 Kamehameha Hwy., Haleiwa, Hawaii 96712
(between Planet Surf & Tabora Gallery)

808-637-8089

Prices and Online scheduling available at
www.northshoresalonspa.com

- Hair
- Nails
- Massage
- Facials
- Make Up
- Full Body Waxing
- Spray Tanning
- Lash & Hair Extensions
- Brow/Lash Tinting
- Private VIP Party Room
- and more...

Grand Opening Event!

Saturday, December 3, 2011 • 6:30p-10p

Come take a tour, meet our staff and enjoy:
Silent Auction • Raffles • Pupus, Refreshments • and more...

Surf INTO YOGA

with Rochelle Ballard

YOGA MASSAGE LESSONS

Private Surf & SUP with
Rochelle Ballard and Megan Abubo

808-638-8137 surfintoyoga.com



PKB'S SWEET TREAT LUCKY DRAWING

Bring in this entry form today!

ONE LUCKY WINNER WILL ENJOY A FREE....

CHOICE OF ONE DECORATED 1/3 SHEET DOBASH, PEACH BAVARIAN OR CHANTILLY CHRISTMAS CAKE!

Name: _____

Email: _____

Phone: _____

One entry per person. Must be at least 18 years old to enter. Entries must be received by December 14, 2011.

www.pkbsweets.com

**T
H
E
B
E
S
T
T
H
I
N
G
S
I
N
L
I
F
E
A
R
E
T
H
E
H
A
R
D
E
S
T
T
O
F
I
N
D!**

TRY OUR GRILLED AHI MELT!
808.637.0002 Located in the Haleiwa Town Center

Haleiwa's Most Hidden & Best Kept Secret...



Food . Drinks . Music . Hawaiian

10% off Mention this Ad & Get 10% off your next visit 10% off

It's that time again!

OPERATION: Toy Box



Get in the true Christmas spirit!

Santa needs your help to provide toys for homeless & needy children this coming Christmas morning.

Here's how YOU can help...

You, your family, business or organization can sponsor a keiki or teen in one of the following age groups. You can sponsor more than one.

BOYS

___ 0-24 months old

___ 2-5 years old

___ 6-9 years old

___ 10-12 years old

___ 13-17 years old

GIRLS

___ 0-24 months old

___ 2-5 years old

___ 6-9 years old

___ 10-12 years old

___ 13-17 years old

Please call us to let us know what age group you are sponsoring. Gifts will be distributed on Christmas morning at the annual North Shore Christmas morning breakfast for the homeless & needy in Hale'iwa.

Please call: 637-3138 or 342-3969 for more info

Christmas is: Sunday, December 25, 2011

(Toy drop-off deadline is Tuesday, December 20, 2011)

Last year, over 500 keiki & teens received numerous new toys & holiday gifts. Over 250 families received bulging grocery bags, and over 900 hungry souls received a delicious hot Christmas morning breakfast. We need your kokua once again.



DROP-OFF LOCATIONS

Turtle Bay Resort valet, North Shore News, Mokuleia Properties-Waialua, American Savings Bank Hale'iwa, Kai Ku Hale, NS Tool & Equip., Haircut Store Laie, Craftsway Waialua Shop. Ctr., Waimea Valley, Breakers



Operation: Toybox

POLO KALIKIMAKA

Hoilday Party in the Country !

Sunday, December 11

Mokuleia Polo Fields



LIVE MUSIC!

SKYDIVING!

PONY RIDES!

GATES OPEN AT 12 NOON...POLO STARTS AT 2PM

SPECIAL ADMISSION: \$5 PER PERSON IF YOU BRING A TOY

JOIN US FOR OUR ANNUAL HOLIDAY FUNDRAISER, AND HELP THE UNDERPRIVILEGED KIDS ON THE NORTH SHORE

BRING AN UNWRAPPED GIFT TO PUT UNDER THE CLUBHOUSE TREE

GIFTS MAY ALSO BE LEFT AT THE ENTRANCE

TOYS WILL BE DISTRIBUTED ON CHRISTMAS DAY
FOR MORE INFORMATION, PLEASE CALL 342-3969

Quality Tile Crafts

"No job too big or small!"

Specializing in Ceramic Tile,
Travertine, Marble, & Slate

Kevin Wilson

cell (808) 864-4985 office (808) 638-8492

www.QualityTileCrafts.com Free Est.

FARMER & THE BAKER INC.

(formally Mokuleia Landscape & Nursery Co.)



Fruit & Flower Trees
Palms & Bamboo
Ornamental shrubs

and more...at great prices!

Call John (808) 341-1992



Since 1997

HALEIWA

Home of Hawaii's #1 Acai Bowl

Acai = Ah-Sigh-ee

The AMAZON SUPER FRUIT provides:
Increased Energy, Stamina, and Performance

Stop in today and get **OVER \$1 off Sambazon
ACAI Energy Drinks**

With purchase of any size smoothie, juice or bowl
Not valid with any other offers. Expires 1/17/2012



HALEIWA: 66-215 Kam. Hwy. 637-7774

Also in

KAILUA: 600 Kailua Rd. 262-2383

KAHALA: 4346 Waiialae Ave. 732-7200



**Direct From
Donovan
State Senator
Donovan Dela Cruz**

The new session is just around the corner – actually about a month and a half away. During the interim, my office has been researching, reviewing and working on legislation that we will be introducing in the next session as well as resurrecting some measures that did not pass last session.

Some measures I am proposing are:

- Caylee’s Law – The disappearance and subsequent death of Caylee Anthony sparked public outrage worldwide about the accountability and responsibility of parents and guardians to report a missing child in a timely manner. My office received a large number of emails asking that something be done to prevent such tragedies. The bill I am proposing will make it a felony if the disappearance of a child is not reported within 24 hours and especially if it results in the death of the child.

- Puppy Mills – This issue became particularly significant to me after fostering and being able to adopt puppy mill dogs. I hope to prevent cruelty to animals especially not having them subjected to

living in horrific conditions. We want to address puppy mills, stricter enforcement of any existing laws, harsher penalties, regulating, licensing, etc.

- Agriculture – Addressing some of the concerns related to me by farmers and those in the agriculture industry, such as food safety regulations, agriculture theft and vandalism, rising land costs, and the availability of financing, is a priority. There are several different pieces of legislation I am offering to address the different needs.

- Ag Theft and Vandalism – tougher penalties against agriculture crimes

- State Loan Guarantee Program – include all agricultural lands rather than only those considered Important Agricultural Lands (IAL)

- State Uniform Food Safety Standard – develop uniform food safety standards for the state to assist farmers in getting food safety certified

- Purchase Dole facilities in Whitmore - use the site as a food safety certified processing and packing facility

- Public Safety – any person receiving state assistance must undergo drug testing to prevent misuse of state funds

There are a few others we are still working on. We are also working on the measures we plan to reintroduce in the upcoming session. We have been reviewing the measures to determine what needs to be done to assure their passage this time around. We are also meeting with industry, organizations and other individuals who may help us by providing expertise and suggestions or what their concerns may be.

When the measures are posted for consideration in committees, if you have any particular interest in any of them, we welcome your support.

2011 FINAL EDITION

Our next edition published on
December 14, 2011

Will be our final edition of the year.

Our first 2012 edition will be January 11
Deadline is December 29, 2011

North Shore Food Bank

You can help feed the North Shore’s homeless & hungry by donating non-perishable canned foods to the North Shore Food Bank located in the North Shore News Office above the Hale’iwa Post Office.

637-3138

Prefer to contribute financially?

Check can be made out to:

Once A Month Church

P.O. Box 117, Hale’iwa, HI 96712

TOP 5 MOST NEEDED ITEMS

- Financial Contributions
- Canned meats or tuna & soups
- Canned meats & soups
- Canned vegetables & fruits
- Canned beans

No donation is too small.

501c3 non-profit



splurge!

BE YOUR OWN SANTA

HAPPY HOLIDAYS

GUAVA SHOP

HALEIWA TOWN CENTER

637-9760 | OPEN 10-6 EVERYDAY

HUNDREDS OF COOL PRIZES WILL BE GIVEN AWAY...

Surfboards, Dive Gear, Bodyboards, Tees, Watches, Sunglasses, Hats, Beachwear, Surf and Dive Accessories and More!



HALEIWA SURF n SEA HAWAII
EST. 1965

**The 22nd Annual
Twelve Days of Christmas
Giveaway!!**

WIN!

Logos included: ESKIMO, DC, Sanuk, H2Odissey, rusty, Island Silver, billabong, GORILLA GRIP, insight, Freestyle, Elemenohpee, BUBBLE SHACK, RVCA, RIP CURL, KREED, Block Surf, Stewart, Schaper, vonzipper, NSP, adobe, Hawaiian Style, CUSTOMX, CREATURES, nixon, Hurley, VIPER SURFING FINS, BZ, BILABONG, SOUTH POINT, cobian, LUCY LOVE, PROTECK, Reins, Sea Sports, O'NEILL, WATERMAN, DAKINE, Crush, globe, reef, FILTRATE EYEWEAR, BUSH MAN, Chester's, FC5.

HERE'S HOW TO WIN...

Pick up a free sticker at Surf n Sea. Stick it on your car, bike, skateboard, etc. From Dec. 13th thru Dec. 24th we'll be cruisin' the island, and if our elf spots your sticker, YOU WIN! It's that easy! Stop by for more details!

This is how you get there... find the ocean at Surf n Sea!
62-595 Kamehameha Hwy (Next to Old Haleiwa Bridge) Haleiwa -
(808) 637-SURF www.surfnsea.com



A Message From State Representative Gil Riviere

Aloha, North Shore!

Congratulations to Waialua Elementary School for its recognition as a 2010-2011 No Child Left Behind National Blue Ribbon School, an honor that was earned by only three schools in Hawaii and 300 throughout the United States. Well done, Principal Scott Moore, teachers, staff and students!

I was privileged to attend the 25th Combat Aviation Brigade Deployment Ceremony at Wheeler AAF on November 18th. These soldiers will be leaving for Afghanistan a couple days after Christmas on a 12 month deployment, so let us keep them and all of our military personnel in our thoughts and prayers this holiday season and after.

The City and County Department of Parks and Recreation conducted a hearing on proposed rules governing surf contests at 2 p.m. on Wednesday, November 16th, at the Sunset Beach Rec Center. Unbelievably, the Parks Department failed to tell anyone about it. Nobody.

When asked why they did not even inform our city councilman, community associations or state legislators, the Park's Dept. responded that they were required

only to post one ad in the legal section of the paper one month in advance. Fortunately, somebody saw the notice and a last minute coconut wireless turned out three dozen people to the mid-week, mid-afternoon meeting.

Virtually every person who attended the meeting wanted better notification and additional time to discuss the rules; however, a request to extend the deadline for submitting comments was denied. The draft rules can be viewed at www.letssurfcoalition.org.

Registration for Waialua Little League is coming to a close, so if your children are not yet signed up, you can register on-line at Eteamz.com/WaialuaLL. Last chance to register in person will be on December 17, from 9 a.m. to noon, during the Minors Division try-outs at Puuiki Park in Waialua.

Looking for a job? The 2012 Legislature will convene on the third Wednesday in January and continue until the first week in May. During this time, we hire additional staff to work at our Capitol office to handle constituent concerns and legislative priorities. If you would like to be considered, please call Trina Ishii at 586-6380 and submit your resume to t.ishii@Capitol.Hawaii.gov.

Our office is your office. Please feel free to visit Room 319 at the Capitol, call 586-6380, or email RpRiviere@Capitol.Hawaii.Gov whenever we can be of assistance. We have district news, information on homeless programs and emergency preparedness, links to previous news articles and our monthly TV show, "Gil Gets It Done!" online, and more at GilRiviere.Info.

Holland American Legion Band Holland, Michigan Thom Working, Director

Sunday, December 4, 2011
Waialua Bandstand 4:00 p.m.

Star Spangled Banner – Swearingen
Strike Up the Band – Gershwin/Yoder
Chatanooga Choo Choo – Gordon-Warren/Story
Remember Pearl Harbor – Reid-Kaye/Yoder
Lest We Forget – Swearingen
Boogie Woogie Bugle Boy – Raye-Prince/Ployhar
March of the Belgian Paratroopers –
Leemans/Swearingen
Moscow, 1941 – Balmages
Cheerio March – Goldman/Erickson
Skylark – Mercer-Carmichael/Yoder
Washington Post March – Sousa
- **INTERMISSION** -
Hawaii Five-O Theme – Stevens/Wallace
At Dawn They Slept – Bocook
Doolittle's Raiders March – Edmondson
Victory at Sea Selections – Rodgers/Bennett
Armed Forces Salute – arr. Moffit
To Reap the Blessings of Freedom – Wagner
America the Beautiful – Ward/Dragon
The Stars and Stripes Forever March – Sousa



HOLIDAY CRAFT FAIR

WAIMEA VALLEY

MAIN LAWN

SUNDAY

DECEMBER 18TH

9:00AM TO 3:00PM



For more information please call: (808) 638-7766

"Come Hell or High Water"

...a bodysurfing film by Keith Malloy, is coming to Hawaii. Filmed at Point Panic, the Wedge, Sandy Beach, Makapuu and Teahupoo.

Join us at Sunset Beach Elementary School on Friday, December 9. Starting at 6:30 with live music, raffle and a Q & A with Keith Malloy and other guests from the movie. Free admission.

Proceeds from the film will be donated to Keep the Country COUNTRY! and the Plastic Pollution Coalition.

For more information and a schedule of showings please visit <http://www.woodshed.com/news-events>.



*** HALEIWA CRAFTS WAY, LLC ***

Bringing to the NORTH SHORE for the first time –

the BIGGEST . . . the BADDEST . . . the most BEAUTIFUL . . .
the most CREATIVE collection of:

Floral Hair accessories for that special occasion or add that finishing touch to your outfit;

Floral arrangements for your home and ideal for that special gift;

Wedding bouquets, boutonnieres and corsages for your special day;

Come visit us at Haleiwa Town Center by Bank of Hawaii

Pop on over and get immersed in our floral heaven right here on earth.

EXPLORE our wide range of quality and affordable wooden souvenirs, leis,
our new and exciting jewelry collection and so much more...

Plumeria . . Hibiscus . . Puakenikeni . . Rose . .

Daisy . . Orchid . . Spider lily . . Lily . . Poppy

AND Because we just opened this month,

everything in the store until the end of the November is

10% Off for all purchases over \$20 and

Receive a Free Gift

Call us at 637-2270

Or visit our website www.craftsway.com

Main store located in Aiea in the same building as Fabric Mart behind Cutter Ford

How the attack on Pearl Harbor was defended from Hale'iwa

By Captain Richard W. Rogers

The poker game at Schofield Barracks had lasted all of Saturday night and past the dawn of Sunday Morning, December 7, 1941. As the sun came up over the Koolaus, Lieutenants Kenneth Taylor and George Welch talked about driving their jeep down the hill for a swim at the Haleiwa Recreational Beach, next to their base at Puaena Point. The sound of a high flying airplane went unnoticed at first. As the whine of the engines got louder, someone at the table noted that the engines sounded peculiar. Suddenly the flight-line outside burst into flames. Live bombs dropped from twenty-five Nakajima Kate dive-bombers onto exposed aircraft that had been parked together with armed guards protecting them against sabotage, but exposing them to the aerial attack that lasted for the next fifteen minutes.

Lieutenant Welch got to the nearest telephone and had the operator place a rush call to the Haleiwa Airstrip, where his P-40 was parked. The reply was a long time coming. Once an airman answered, it was with some relief that Welch was informed that his flight-line had not been attacked. He gave orders to fuel and arm the pursuit planes, especially his and Taylor's.

As they and three other flight officers, Lieutenants Brown, Rogers and Webster, raced down the windy road, past the pineapple and sugar plantations, they saw four planes, with red circles painted on the bottom of their wings, come through Kolekole Pass and strafe Wheeler Field again. Before they got to the bottom of the hill, hangers filled with gasoline and ammunition were exploding, with most of the field's aircraft damaged beyond flight.

The five pilots rushed to the Haleiwa airfield and climbed into their fighters. By 0815 they were airborne, heading for battle against an unknown number and type of enemy. Climbing into position over Barbers Point, Welch and Taylor spotted a formation of 12 planes over Ewa, 1000' below them. They attacked, pairing up and opening fire at the enemy. Welch discovered that one of his guns was jammed. He climbed out of the fight and cleared his guns before returning to the battle. He soon noticed a lone enemy fighter flying out to sea. He pursued it and shot at it until it fell into the ocean. Meanwhile, Taylor had shot down two enemy airplanes. Lieutenant Brown had found himself surrounded by enemy planes and had to shoot his way out of the formation, downing an enemy just off Kahuku Point.

Forty-two of Wheeler's combat aircraft were destroyed on the ground and others so damaged that they could not get into battle that morning. Four P-40s and two P-36s were all that managed to get into the fray from the initial attack from Wheeler. They accounted for 25 sorties in the first hour of combat.

Landing at the burning airbase of Wheeler Field, for more fuel and ammunition, Welch had to laugh at his uniform, as he was still wearing his tuxedo trousers. Just as the planes had been refueled and Welch's gun again cleared, a wave of eight to ten planes attacked at low level. Both Taylor and Welch managed to take off before being hit. Welch was being chased by one of the enemy. He kept his altitude low, flying through a deep gulch, gaining airspeed. Suddenly climbing and turning behind his attacker, the American sent his enemy to a fiery death in

the cane fields between Wahiawa and Haleiwa. With his now bullet scarred airplane, he headed for Ewa where he again sought out the enemy, chasing a dive-bomber to a splashdown, five miles off shore.

Returning to Haleiwa, Welch, Taylor and Brown turned in their reports. Welch claimed four kills, Taylor two probables (later confirmed) and Brown one. Lieutenant John L. Dains had also engaged the enemy from Haleiwa in both a P-40 and P-36 fighters. Unfortunately, he was shot down by anti-aircraft fire from Schofield Barracks that morning.

Haleiwa Airfield gave the enemy the most resistance of any of the Oahu fighter bases during the attack on Pearl Harbor, yet was entirely neglected by the Japanese bombers and strafers, because it was not on their maps.



P-40 at Haleiwa Airstrip



Taylor later commanded several squadrons while stationed in the United States and elsewhere. He served for 27 years of active duty, then joined the Alaska Air National Guard until retiring as a General in 1971. He worked in the insurance industry before retiring in 1985. Taylor passed away in November 2006 and is buried at the Arlington National Cemetery.

George Welch retired from the United States Air Force as a major in 1944, and became a test pilot for North American Aviation. He received some notoriety for reportedly being the first pilot to exceed Mach 1 in the prototype XP-86 Sabre (two weeks before Chuck Yeager's record flight). Welch died in 1954 following a crash in a test flight in a North American F-100 Super Sabre. He is buried in Arlington Cemetery.



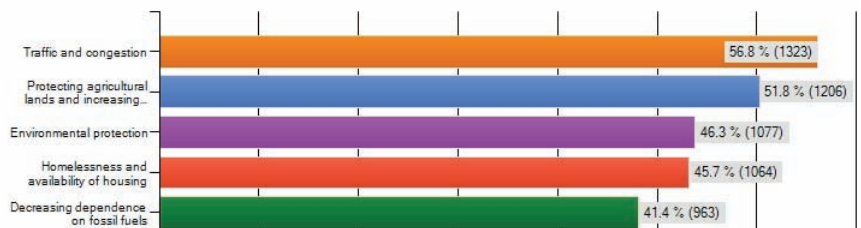


Council Chair
Ernie Martin
Serving You in District 2

The City's Department of Planning and Permitting (DPP) recently concluded a community survey designed to gauge public perception about the issues being considered for the update of Oahu's General Plan. The survey was posted on the DPP's project website and consisted of 17 questions. Although a total of 2,413 people took the time to respond, it cannot be considered as a scientific survey since the participants were not a representative sample of Oahu's population. In fact, certain areas of Oahu were over represented in the survey. Windward and North Shore resident's response rate was at least double the actual share of the island's population. Similarly, Kailua residents were nearly 20% of the total responses but represent a little less than 5% of the island's population. The high response rate of these two communities has been attributed to the ongoing debate in Kailua concerning short term visitor accommodations in residential areas, and the development proposed for Ko'olau Loa region. Nonetheless, the information collected from the public is useful as the General Plan is intended to be a document that expresses the aspirations of the residents of Oahu. For example, when asked about what they value most about living on Oahu, 75% of residents

surveyed selected opportunities to enjoy surrounding natural areas, clearly a sentiment shared by residents all across the island. The General Plan is also meant to help the City focus on the critical issues of growth, development, and quality of life issues that island residents are most concerned about, including regional population growth, economic health, affordable housing, and sustainability. A quick look at the respondent's top five issues in the table below indicate common concerns over traffic, a desire for increased production on agricultural land, protection of the environment, housing and a decrease of our dependence on fossil fuels.

2. From the list below, which do you believe are the five most important issues that need to be addressed by the General Plan? (check only five)



Oahu has more than 42,000 acres of high-quality farmland, with the largest concentration in Kula and here on the North Shore. When asked to select the three most important factors residents feel will contribute to the success of Oahu's agricultural industry, people listed (1) increased consumption of locally-grown products, (2) land held in perpetuity for agriculture, and (3) more crop diversification. Clearly, our community has a stake in the planning process, with particular attention to agriculture as a part of our future. If you would like to view the entire survey, you can log on to <http://honolulu.dpp.org>.

Friends of Waialua art contest winners

The Friends of Waialua Library hosted their 13th annual elementary school art contest with a reception November 17, 2011. The theme for the contest was "My World of Books."

Four North Shore elementary schools participated: Waialua Elementary, Haleiwa Elementary, Sunset Beach Elementary and St. Michael's School. Each school entered two "finalists" per grade level, grades 1-6. All finalists were presented with a medal and a ribbon. The finalists' art was judged by local artists. First place for each grade level received a \$25 Long's gift certificate, second place received a \$20 certificate, and 3rd place received a \$15 certificate.

The students' art will remain on display in the library until February. And the winners are:

Grade 1

- 1st - Sofia Buenrostro, Sunset Beach Elem. School
- 2nd - Austin Cataluna, Sunset Beach Elem. School
- 3rd - Sage Tesoro, St. Michael's School

Grade 2

- 1st - Moe Johnson, Sunset Beach Elem. School
- 2nd - James Isenhower, St. Michael's School
- 3rd - Audrey Villamor, Haleiwa Elem. School

Grade 3

- 1st - Shani Rapine, Waialua Elementary School
- 2nd - Anthony Miyataki, Waialua Elem. School
- 3rd - Dylan Repalda, Haleiwa Elementary School

Grade 4

- 1st - Amber Ikalani, Waialua Elementary School
- 2nd - Kaiaka Bajo, Haleiwa Elementary School
- 3rd - Rhea Grace Acosta Manzano, Waialua Elem.

Grade 5

- 1st - Preeya Galea'i, Sunset Beach Elem. School
- 2nd - Chad Ganai, Sunset Beach Elem. School
- 3rd - Angelia Abad, St. Michael's School

Grade 6

- 1st - Kristina Domingo, Waialua Elem. School
- 2nd - Monet Bisch, St. Michael's School
- 3rd - Christine Agcaoili, Haleiwa Elem. School

The 2nd Annual ART Squared Benefit ART Show!!

Local & Mainland Artists team up with the thomadro ART gallery in Haleiwa to support the Keiki Arts Programs at North Shore Elementary Schools

A STUNNING COLLECTION OF ORIGINAL ART BY WELL KNOWN HAWAI'I AND MAINLAND ARTISTS WILL BE SOLD FOR ONLY \$100 EACH!! ARTISTS SUCH AS THOMADRO, HEATHER BROWN, MARK REMLING, SUZY ANNICK, PETE TILLACK, ANNA GOOD, DERRICK ONTIVEROS, KELLY PATRICK, WADE KONIAKOWSKY, NORM DANIELS, JORDAN DODSON, MARY BETH, TREY SURTEES, TARYN ALESSANDRO, COURTNEY FROMBERG, OLLIE LONQUET, KAT REEDER, CLARK TAKASHIMA, SHANNON O'CONNELL, JOSIE GIDDINGS, PATRICK PARKER, DANIELA POWER, THEA MARIE REYES, NICOLE GEARY, MONICA PARKER, CHRISTIE SHINN, JEFFERY ROBERT, GINA BARKEY, ELIZABETH SHATNER AND MANY MORE TALENTED ARTISTS!!

100% of the proceeds will once again be donated to the schools to buy Art Supplies

ART Squared at the thomadro ART Gallery
Saturday, December 10th, 2011 5:30 - 9:00 p.m.

Lottery for Picking Position will begin at 5:30 Sharp!!

66-145 Kamehameha Highway

Haleiwa Town Center Unit 7, Haleiwa, Hawai'i 96712 (808) 637-8010



**HALE'IWA
CHRISTMAS
PARADE!**

*Friday
December 9, 2011
Begins at 6 p.m.
from Weed Circle to
Hale'iwa Beach Park*

*Sponsored by
North Shore
Chamber of Commerce*

*To participate contact
the Chamber at
637-4558*

BRRRRR

It's been cold lately!
Perhaps you have an
extra blanket or two,
used or new to donate to
our homeless neighbors.
Drop off blankets at the
North Shore News office.

A Warm Mahalo

342-3969

BULLETIN BOARD



Featuring the largest selection of certified organic produce on the North Shore.
 No panic...ours is organic.
 Open 7 days.
 Mon.-Sat. 9am-6pm.
 Sun. 9am-5pm

66-445 Kam. Hwy
 Haleiwa, Hawaii 96712
 Next to the Post Office
 808-637-6729 • 808-637-1922 fax



Robert Oakley Owner
 ASE Certified Master Mechanic Waialua, Hawaii
 Computer & Electrical Specialist (808) 330-0459

N-C PLUMBING & SUPPLY

Cont. Lic. No. C-8913



- RESIDENTIAL & COMMERCIAL SALES & SERVICE
- CONTRACTING & DESIGN • HOME PLUMBING SERVICE
- PLUMBING FIXTURES, HEATERS • FREE ESTIMATES

Nestor P. Calilao (Owner) Bus: 637-8662
 P.O. Box 769 Res: 638-5157
 Waialua, HI 96791 Cellular: 372-8718

email: nncplumbing@hawaii.rr.com

BOW WOW BUNGALOWS

Licensed Boarding Kennel
 North Shore, Oahu

Reasonable Rates • Ph. 637-2562

These Dogs Have Fun!

FMS

Financial Management Solutions
 Income Tax Services, Comprehensive Financial Services, and Insurance Planning

Complete Financial Services are available on-line.
 Please visit our website for more details.
 Virtual Office Address:

www.FMS-USA.com

Office: 1-855-753-7750 • Fax: 1-866-307-3330 • Email: amber@fms-usa.com

Amber M. Dole, Registered Representative, H.D. Vest Financial Services, Inc. Securities Offered Through H.D. Vest Investment Services SM, Member SIPC A non-bank subsidiary of Wells Fargo & Company, 6333 North State Highway 161, Fourth Floor, Irving, Texas 75038, 972-670-6000

Paradise Lua

Parties • Special Events
 Anykine Private or
 Public Functions



"Portable Sanitation at its finest"

690-8116

Munden Design & Build

Lic.#BC19632

Design • Plans • Permits • Construction
 Additions & New Residences
808 391-8616

Providing quality work since 1978



DR. PORTER TURNBULL

Chiropractic Orthopedist

(808) 638-8740

Appointments available Mon.-Sat.
(evenings by appointment)

- Industrial accidents & auto injuries
- Sports injuries • Spinal care
- Safe, Effective, and Gentle



"HONEST DEALS ON QUALITY CARS & TRUCKS"
 Established 1985

LINNE HOLMBERG

Owner

Honolulu: 834-0808

Fax: 834-6602

530 Paiea St.
 Honolulu, HI 96819

Lonestarmotorsportsllc.com

Cellular: 222-4272



COWPER CONSTRUCTION
 LIC. #AC 18275

GENERAL ENGINEERING CONTRACTOR

Full Service Sitework
 Contractor

Septic Systems & Tanks
 25 yr. exp.

Michael Cowper 638-7200

cowperhawaii.com

Everyone is invited... St. Michael School Holiday Extravaganza

Friday, December 16, 2011

St. Michael School

4:00pm – 9:00pm



Food, Crafts, and a silent auction to help support St. Michael School!

Looking for crafters...

call #637-7772

or email stmichaelhi@hawaii.rr.com

**We Pay You
\$100**

**CASH & FREE
TOWING**

**for unwanted vehicles
(complete)**

636-7183

North Side Towing

SURFERS CHURCH

FOOD • FELLOWSHIP • THE WORD

SATURDAY NIGHT
6:30PM DINNER 7:30PM WORSHIP



55 S KAMEHAMEHA HWY | WAHIAWA | HAWAII 96786

Location Available.

Be your own boss.



www.theupsstore.com

1-877-623-7253

The UPS Store



BULLETIN BOARD

Pilates
with Linda Yadao

Private, Semi-Private and
Mat Classes

Over 30 Years Experience

Call: 637.1230
linda@ynrmarketing.com

HAIR SPECIAL
Full Highlight and Cut \$100.00

GINA WALKER
Hairdresser to the stars
from Malibu, CA
Senior Stylist & Color Master

Now at our new location
North Shore Salon & Spa
in Haleiwa Town 808-375-3984

When it's time to tie the knot...

www.hawaiiweddingminister.com

informal beach weddings a specialty

(808) 342-3969

CELESTIAL Natural Foods

Specializing in vegetarian foods, vegan foods, whole foods, organic food. Wheat free, dairy free, raw foods, gluten free. A complete selection of natural foods for 37 years. Make earth day, everyday.

Open 7 days.
Mon.-Sat. 9am-6pm.
Sun. 9am-5pm

66-445 Kam. Hwy
Haleiwa, Hawaii 96712
Next to the Post Office
808-637-6729 • 808-637-1922 fax

"THE BULLETIN BOARD THAT IS IN EVERYONE'S HOME"



In Loving Memory of... David Bruce Helms
"Dave"

September 29, 1942 to November 11, 2011

A good man, a good father, a good friend; generous, patient and tolerant; a pirate who loved the sea and its bounty; a sailor, a surfer and a smuggler; a poker player, a fisherman, "the boss" and a TV repairman. Dave was survived by his brother, Bob, in Bowling Green, Kentucky, his three children Summer, Kanoa and Robin, two grandchildren, Nainoa and Kekoa, as well as many other people who loved him and considered him a true friend. You will be remembered and cherished in our hearts, always.

Join us on Sunday, December 4th at noon in front of his house in Mokuleia, as we paddle out to scatter his ashes.



The North Shore News is published every other Wednesday and mailed free of charge to all North Shore homes and businesses. Extra copies may be obtained at our office.

PRESS RELEASE POLICY: Submit press releases in person or by fax, mail or email to Editor, North Shore News, P.O. Box 1117, Haleiwa, HI 96712. Please type your releases and keep them shorter than 200 words unless they are of an unusual news interest. Releases should be viable news stories and are published on a **space available basis only**, with priority given to those received in our office first. You may attach photos. We are not responsible for the return of any photos. All materials are submitted at owner's risk. We reserve the right to edit and/or refuse all submissions including advertising.

EDITORIAL POLICY: We welcome articles and letters from our readers. Letters to the Editor are published on a space available basis only and preference is given to shortness of length, and quality of content. We prefer to run not more than one letter, per person, per 6 month period. Letters subject to edit.

Views expressed by our contributing writers and advertisers do not necessarily reflect the view of the management and staff of the North Shore News. All rights reserved. Reproduction in whole or part without permission is prohibited. © 2011.

PUBLISHER/EDITOR
RON VALENCIANA

TYPOGRAPHY
DOWNTOWN GENERAL STORE
BOOKKEEPING & CLASSIFIEDS
LINDA SEYLER

CONTRIBUTING WRITERS
RON VALENCIANA,
BUTCH HELEMANO,
NATY HOPEWELL

CLASSIFIEDS

♥♥Need a minister for a North Shore wedding? Hundreds of knots tied for happy couples on Oahu. Simple beach-side ceremonies to formal church or chapel services. I'll make your special day an extraordinary memory. Call & leave clear message with phone number & possible date, time & place. 342-3969. Also: Vow renewals, house blessings, baby luaus.

PAUMALU ELECTRIC
David C. Hancock
638-9054 / Lic#C18074

SHORE ELECTRICAL SERVICE
New Const-Remodels
638-0049 / Lic#C20777

FREE Pregnancy Test
Above Haleiwa Post Office
Call for hours 779-4685

LGR Construction
Remodel • Repair • Design
Drafting • Painting • Small Jobs
Affordable rates. 343-4453/Lic#26759

Dog/Cat Nail Trimming
at your home only \$15.00
Call Julie 637-5395

Aloha Computer
PC Repair/Virus Removal
Fax/Copy/Internet Access
372-2667 or 237-4558

Lawn Care For You
Mowing, Trimming, Light Hedging
Call Thomas 637-5839

Ross McGerty BC24080
349-6359 • 637-9539

From Waiialua to Sunset
Make Me the First Call
for Home or Rental Repairs
or Renovations

EXPERT ELECTRICIAN
Fans, emergency services, etc.
Jim Richards 371-9369

PARADISE PLUMBING INC.
New Const • Repairs • Remodels
808-368-1473 / Lic. 29856

Holoholo Mobile Screens
New Screens • New Frames
Screen Repairs • Pet Proof Screens
Sliding Screen Doors • Affordable Rates
Call Today 783-8764

BEACH PLUMBING & ROOTER
Over 30 years experience
Call Larry 637-6400

Ohana Clean Up
Carpet Upholstery Cleaning
Pressure Washing
375-1814 • 979-5579

Handyman Services
Remodeling, Carpentry, Floors,
Concrete, all parts of Construction
Call Bob "The nicest guy in the
business" Ph. 282-2812

SULLIVAN PAINTING
Residential • Commercial • Int/Ext
Tommy 371-0998 Lic.#C31055

Seamstress
Rita Bell
497-3666

NO KA OI
Home & Land Maintenance
Window washing, power washing,
painting & staining, fix screens &
more. Free estimates. 808 446-2282

Mel's Cleaning Service
Experienced, reliable, efficient, all
jobs excepted. Vacation rentals,
business and residential,
References available upon
request.
330-7945

"CHANGE YOUR WATER
CHANGE YOUR LIFE"
Ionized Alkaline "Kangen" water.
For info call Jim Richards 371-9369

Haugan Construction LLC
Build & Repair - Big & Small
Let's Talk
Steve 542-9269

J & L SERVICES HALEIWA
Most reliable yard care
and gardening experts
Reasonable rates and the
friendliest service
Call now! 673-1384 Larry

Bikram Yoga
*Stretch, strengthen &
stimulate mind & body.*
All ages and levels.
Please call for class schedule
637-5700

North Shore Pumping
Cesspool & Septic Pumping
Complete Plumbing
Services, new & repairs
Lic. & insured #25567
638-0900 • 291-5089

N.S. Property Maintenance
Power wash, painting int/ext,
deck repairs, extensions,
fences, gates,
carpentry & remodels.
Maintenance, lawn & yard.
Chris 381-5213/638-0659

B.E. CONSTRUCTION
Dumptruck & Backhoe
Services
Equipment, dirt, rock,
green waste hauling
in and out
DEMOLITIONS
BRUCE ESCHE 783-9510

LEARN TO SWIM
AT THE
HAWAII SWIM
SCHOOL
ON THE NORTH SHORE
Developing swimmers since 1982
Haleiwa Rd. at Smiley Place
637-4863

SUBSCRIPTION RATES

If you live outside the North Shore area on Oahu, neighbor islands, or the mainland, you can subscribe to the North Shore News. Our annual subscription rate is \$27 for 25 issues delivered by standard bulk mail (2-3 weeks), or \$48 for 25 issues delivered by first class postage (3-5 days). Call our office for payment information at (808) 637-3138.

HOW TO CONTACT THE NORTH SHORE NEWS

Letters to the Editor, and other items submitted for publication consideration may be sent to us via:

MAIL: P.O. Box 1117, Haleiwa, HI 96712

E-MAIL: NShoreNews@aol.com

FAX: (808) 637-8862

PHONE: (808) 637-3138

For Advertising Rates,
call
637-3138

CLASSIFIED ADS

hawaiiweddingminister.com

342-3969

31 years experience

Offshore Plumbing, LLC

Commercial • Residential
• Septic • Plumbing Design

Mike Duenas, owner
Lic #C28113
630-1407

Fax: 637-7870 • Office: 371-3451
offshoreplumbing@yahoo.com

BOBBY'S BODIES

Tuesday evenings at 5:00 p.m.

• Body Toning

Friday mornings at 9:00 a.m.

• Cardio Pump/Fat Burner

For more info: call Bobby, owner of
BOBBY'S BODIES at 637-4150

Lisa Carley Skin Care

637-9400

lisacarley.com

67-292 Goodale Ave. #104
Waiialua Shopping Center

Your Clean Home

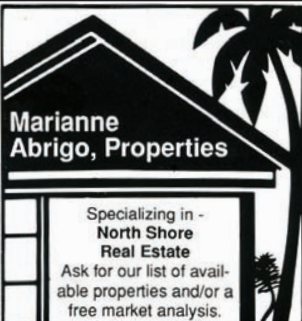
Specializing in residential/vacation
homes & property management.

Experienced/reliable
and affordable. Green cleaning
safe for your family and
our planet!!!

808 638-0262 or 779-6604

THE LAWN RANGER

Lawn Maintenance
no yard too hard
no lawn too far gone
We mow betta
258-6439 Dan Fatchett



**Marianne
Abrigo, Properties**

Specializing in -
North Shore
Real Estate

Ask for our list of avail-
able properties and/or a
free market analysis.

Marianne M. Abrigo

"Realtor since 1974"

Office 637-3511
Fax 637-0777
Email mabrigo222@aol.com

Automotive Services and Restoration

- Auto Body & Paint
- Detail & Shampoo
- Upholstery

Rick Estrada - 216-9419

HARVEY'S REPAIR, LLC

24 hrs Towing Service

Specializing in opening
locked car doors

Call any time 478-0333

GERMAN CAR SERVICE

Professional-Qualified

Technician

Call Gary

637-6800

ANGELS PLUMBING

Repairs
Remodeling
Renovation

638-7878

Lic. #C12004



SHIATSU • LOMI

Aromatherapy

Milica Barjaktarovic

Lic # MAT8348

351-0848

HumanRemodeling.com

SEPTIC SYSTEM QUESTIONS?

Free Initial Consultation

Bear Engineering

Nathan M. Toothman P.E.

(808) 754-3579

www.BearEng.com

FOR SALE

Got a broken topload
washer or dryer?
Don't trash it call us at
Washcycle Hawaii
778-2450

FOR RENT

Gmd Fl. Professional/retail
Space 466sq/\$1,382.75/month
Xcel Bldg. Haleiwa 779-7779

HELP WANTED

BUSSERS/SERVERS

Pizza Bob's in Haleiwa is looking
for BUSSERS/SERVERS. Experi-
ence preferred. Apply in person
at 66-145 Kam. Hwy.

COOKS/KITCHEN HELP

Pizza Bob's in Haleiwa is looking
for kitchen personnel. Experi-
ence preferred, but will consider
training the right people. Apply
in person at 66-145 Kam. Hwy.

Administrative Assistant

P/T - Must be intelligent with
good computer skills & access
to high speed internet. Work
as independent contractor at
North Shore office and from
home. Flexible hours.
Fax resume to 638-7643.

I need parking space for small
pick-up. Close to Haleiwa Senior
complex on Paalaa Rd. I can pay
50 a month. Please call Dolly at
951-692-2597

Looking for prep cook for North
Shore area. Some kind of experi-
ence preferably but not neces-
sary. Email resume to:
NIKKEI330@gmail.com

If you shop at PX, BX, etc.,
I do too. Call 636-5826.
You drive - I buy the gas!

Farm seeking responsible
hard working individuals.
Work included but not
limited to harvest, prune,
clean & prep w/ flexible
hours. Leave a message.
Call 707-200-1375

Retail Sales Surf & Sea

Hawaii's Ocean Sports Headquarters
is always looking for hard working,
energetic people to become a part
of our sales team. Good pay, bonus,
benefits. Ocean sports experience
and/or bilingual a plus. Apply in
person daily 9am-7pm
62-595 Kam. Hwy., Haleiwa

Next Issue - Dec 14, 2011
Deadline Date-Dec. 1, 2011

MISCELLANEOUS

NS Seventh Day Adventists

Saturdays 9:15-12:15

67-174 Farrington Hwy.

(WUCC, next to WHS)

Info: 638-8209

Christmas Craft Fair & Farmers Market

@ Historical Waiialua Sugar Mill

Saturday, December 3, 2011

8:30am-4pm

Wanted craft vendors \$30.00

Call Edith 351-5114/637-8580

A CALL TO ASPIRING WRITERS!

Do you want to share the love
of writing, exchange ideas, ex-
pand one's knowledge or need
inspiration? The Writer's Discus-
sion Group meets regularly the
second Saturday of each month,
11:00 a.m. at the Waiialua
Public Library. Sponsored by the
Friends of Waiialua Public Library.
For information call 637-8286.

Program Events at Waiialua Public Library

Writers Group meets
the 2nd Saturday at 11:00 a.m.

Book Sale is the 3rd Saturday
at 9:00 a.m.

Book Discussion meets
the 4th Thursday at 9:30

Basic Internet Instruction,
Fridays at 10:00 a.m.

Children's Story-time & Craft
Activity, Saturdays at 10:00 a.m.

Toddler Time, Parent Directed
(Educational toys available),
Fridays at 10:00 a.m.

For more information, please call the
library at 637-8286. Sponsored by the
Friends of Waiialua Library. Closed on
State approved Holidays.

Recycle Plastic Caps & Lids

and help save seabirds

Recycle caps & lids
are being accepted at:
Goodwill Industries of Hawaii
Wahiawa

823 California Ave.
Monday-Sunday
9 a.m. - 5 p.m.

For information:

www.b-e-a-c-h.org/recycling
Ph: (808) 393-2168

CLASSIFIED ADS

OFF da ISLAND

Are you leaving Oahu on vacation or business? Do you live on a neighbor island, the mainland or foreign country and subscribe to the North Shore News? Try send us a photo of someone in front of a sign or landmark holding a copy of the NSN. Email your photo along with the person or persons' name, community of residence, telephone number and photo location to: NShoreNews@aol.com. Or, mail to OFF da ISLAND Photo, North Shore News, P.O. Box 1117, Hale'iwa, HI 96712. We cannot return photos so please send us a copy. Photos received become the property of NSN. Preference and priority will be given to emailed photos.

Please Report Stranded Sea Turtles

Call 983-5730 • Mon.-Fri., 7am-4pm
288-5685 pager wkends, holidays
587-0077 and after hours
Suspected Law Violations
541-2727 or 800-853-1964
NOAA Fisheries DLNR-DOCARE

REUNIONS

The NSN is happy to publish your school or family reunion Free of charge.
Email your announcement to NShoreNews@aol.com.

Waiialua Farmers Co-op Market

Fresh Waiialua-grown produce plants & more at the Waiialua Sugar Mill

Sat. 8:30 a.m. - 2 p.m.
Wed. 4:30 p.m. - 7 p.m.

Outreach Services

Persons with Disability
Advocacy Benefits Housing
HCIL 54-113 Kawaipuna St.
Hauula, HI 96717
Ph. 293-9775 or 293-9777

Statewide Hotline for Litter

1-888-592-2522

Callers need to provide:

1. License plate number
2. Make and model of vehicle
3. Date and time and location
4. What was thrown/blown



Business Services Center

Fast & convenient fax, copy, scan, computer/internet, laminate, etc.

Across from Haleiwa post office.
North Shore Chamber of Commerce
637-4558 or 342-8557

North Shore Farmers Markets

Haleiwa: 9 a.m. to 1 p.m. Sundays, at traffic signal on the old Kamehameha Hwy at the bypass road.

Waiialua Sugar Mill: 8:30 a.m. to noon
Saturdays & Wednesdays 4:40 p.m. to 7:00 p.m.

North Shore Country Market: 8 a.m. to 2 p.m. Saturdays, Sunset Beach Elementary School, 59-360 Kamehameha Hwy.

Laie: 11 a.m. to 2 p.m. June 24, July 8 and 23, Brigham-Young University-Hawaii, 55-220 Kulanui St.

The Lords House Pentecostal Church

Wednesday Bible School 7pm
Sundays 10am-6pm
136 Wilikina Drive
Wahiawa, HI 96786
Info: 808-621-5989

Don't throw away that old BIKE!

Donate it to Yikes Bikes

A non-profit program at Waiialua High & Intermediate School

637-8200
M-F • 8 a.m.-3 p.m.

E Kokua Kakoue Malama I Kawaiola

www.cleanwaterhonolulu.com
Environmental Concern Line
527-5091
City & County of Honolulu

Save Sea Turtles Use Reusable Bags

www.b-e-a-c-h.org

Operation: Toybox

Call if you want an Operation: Toybox for your office and we will provide a decorated box for you.

Linda 637-3138
or 780-8037

Ho'ola Like

"Healers Working Together"
Waikiki Health Center's North Shore Clinic

Majority of Insurance Plans Accepted
No Insurance • Sliding Fee Available

Open Tuesdays and Thursdays

8:30 am to 3:30 pm

Walk-ins are Welcome

Emerson Hall, Queen Liliuokalani Church
66-090 Kamehameha Highway, Haleiwa
Call 284-5212 for an appointment.

Keep it Country To report ILLEGAL VACATION RENTALS

call 768-8159 or 768-8118
You will remain anonymous
Illegal Vacation Rentals are ruining the North Shore
www.savenorthshoreneighborhoods.com

IGREJA EVAN. BRASILEIRA

Domingos 10:00 am
Quartas 7:30 pm
Sextas-Culto de Oraçao 7:30 pm

Voce e o nosso convidado especial

Behind Hale'iwa Post Office
637-5566
Pastor Luiz • 638-2212

Hawaiian Humane Society (808) 946-2187

Animal Rescues & Investigations 356-2250
Dog Licensing 356-2227
Donations & Gifts 356-2221
Education 356-2206
Pet Adoptions & Lost & Found 356-2218

BEACH CLEAN UP

Chun's Reef - 10 a.m.
637-2211
Last Saturday of every month
adoptabeachhawaii.org

MOVING SALE

Cal King Bed, Full Bed, Teak Credenza, Legal Files & Display Cabinet, Antique Windsor Chair, Shell Coffee Table, Glass Rectangle DR Pedestal Table & chairs; Glass Round & Bamboo DR Table & Chairs, Bamboo & Glass Coffee & End Tables, Dresser, Patio Table & Chairs, 2 Lounge Chairs w/Cushions, Household Items, New Treadmill, Books, Hot Tub. Call 371-5553

Free adorable male kittens.

Great Christmas gift.
Available Dec.5
For info call: 277-8410

MAHALO

Turtle Bay Resort house-keeping; Waiialua Elementary & Haleiwa Elementary staff, students & parents; Honolulu Community Action Program & other of you (many anonymously) that have generously donated food & blankets to the Once A Month Church these past few weeks. You are loved & appreciated!

MAHALO

for your donation
OPERATION: ALOHA was a great success!

OPERATION: TOYBOX

Santa needs your help to provide toys for homeless & needy keiki this coming Christmas morning.
Last year we gave gifts to over 500 keiki & teens.

This Holiday Season be sure to

BUY HAWAIIAN
Purchase local-made products. Patronize local Businesses.





MALAMA MARKET HALEIWA:
OPEN DAILY 7 AM-9 PM
808.637.4520

MALAMA MARKET MAKAKILO:
OPEN DAILY 6 AM-10 PM
808.672.9955

Valid Dates:
11/30/11-12/6/11

Fuyu Persimmon **\$1.39**
PER LB.



Folgers Country Roast Canned Coffee **\$7.99**
34.5 oz.



Coca-Cola **2/\$9**
Selected Varieties, 12/12 oz.,
Must Buy 2



choice Certified Angus Beef® Boneless Top Sirloin Steak **\$4.99**
PER LB.



SoBe Lifewater **4/\$5**
Selected Varieties, 20 oz.



Pepsi **4/\$6**
Selected Varieties,
2 Ltr.



8 Piece Fried Chicken **\$8.99**
2 Thighs, 2 Breasts,
2 Drumsticks, and 2 Wings



EZ Peel Shrimp, 41/50 ct. **\$5.99**
Previously Frozen PER LB.



Capri Sun Drinks **2/\$7**
Selected Varieties, 10 Pk.



Fresh Baked French Bread **\$2.29**
EACH



Dasani Water **2/\$9**
24/500 ml.



Meadow Gold Ice Cream **\$5.99**
Selected Varieties, 1 Gal.

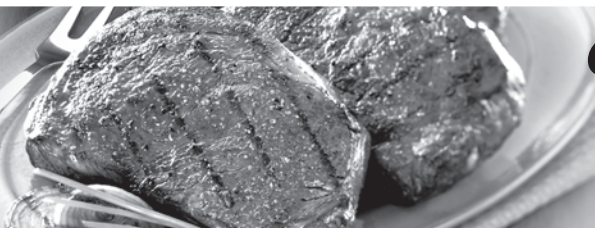


Corona or Heineken **\$19.99**
18 Pk. Bottles
or Rolling Rock
30 Pk. Cans



THURSDAY

INCLUDES:
7-8 oz. Steak
Rice • Tossed Salad • Drink



Grilled Steak
LUNCH
\$6.99

Hawaii Beverage Fee of .1¢ per can or bottle will be added to purchase price at checkout. An additional Hawaii Deposit fee of .1¢ will be charged for all specially marked beverage containers.

Limit five units (mix/match) per purchase, unless otherwise specified. We reserve the right to limit quantities. No sales to dealers. Prices plus applicable state tax. Hawaii EBT cards welcomed.