



**"E Ala Na Moku Kai Liloloa"**

**VANS WORLD CUP  
OF SURFING**  
Sunset  
Nov. 24th - Dec. 6th



NORTH SHORE NEWS November 27, 2013 VOLUME 30, NUMBER 24



*Elena Aoki*

## Waialua Teen is The EXCA Youth World Champ

Elena Aoki became the EXCA Youth World Champ this month in Hamilton, Texas. Elena a Waialua High School student is involved and a member of the United States Pony Club and the Extreme Cowboy Race Association on EXCA. In Hawaii, Elena shows on the Hunter Jumper Circuit and also competes in the EXCA events. Congratulations Elena!

|  |   |
|--|---|
| PRE-SORTED<br>STANDARD<br>U.S. POSTAGE PAID<br>Honolulu, Hawaii<br>Permit No. 1479 | Hale'iwa, HI 96712<br>66-437 Kamehameha Hwy., Suite 210 |
|--|---|

PROUDLY PUBLISHED IN  
**Hale'iwa, Hawai'i**  
**Home of the Vans Triple  
Crown of Surfing**



## OFF da Island in Nordenham, Germany

*Pupukea residents the Esche clan along with friends Patty and Mike Duenas traveled to Nordenham, Germany to reconnect with their roots at a family fiftieth wedding anniversary. Sandra was sure to bring the North Shore News along for homesick Patty and Mike to remind them of the good times on Oahu's beautiful North Shore. For more information on the OFF da Island campaign turn to page 23.*

### ATTENTION: New Date

for

# Surf Night

at

**Sunset Beach Elementary**

**Friday, November 29**

**6:00 p.m.**

### SIX SPECIAL NIGHTS

**MONDAY**  
\$2.95 BEER  
BOTTLES & DRAFT

**TUESDAY**  
\$5.00 OFF PIZZA  
REGULAR OR LARGE

**WEDNESDAY**  
SALAD NIGHT  
1/2 OFF SALADS

**THURSDAY**  
\$3.95 NIGHT  
\$3.95 SLICES,  
SALADS, MAI TAI'S,  
WINE & BEER



**SATURDAY**  
\$4.50 NIGHT  
\$4.50 SLICES,  
SALADS, MAI TAI'S,  
WINE & BEER

**FRIDAY NIGHT \$7.50 BURGER & FRIES**

Dine In Only - 4:00 PM Until Closing - Haleiwa Town Center - 637-5095

**\$2.00 Off with this Coupon**

Some Restrictions Apply. See Restaurant for Details.  
When Ordering Regular Priced Items. Good Anytime. One Coupon Per Person.  
Can Not Be Combined with Other Discounts. Expires 01/31/2014.

### The Hale'iwa Family Dental Center, Ltd.



presents

### "Comfort Dentistry"

including—

- Relaxation Glasses
- Television Glasses
- Caring Staff
- Special Medication to help you relax
- Laser Cavity Detection
- New Patients Welcome!

Your teeth are much too important to neglect.

**Call: 637-9652**  
for your reservation

We're conveniently located behind First Hawaiian Bank  
in the heart of Hale'iwa.

# Surf N Sea

## TWELVE DAYS OF CHRISTMAS GIVEAWAYS



### 25TH ANNUAL XMAS GIVEAWAY!

HUNDREDS  
OF AWESOME  
PRIZES FROM  
YOUR FAVORITE  
SURF COMPANY!



## HERE'S HOW TO WIN!

*Pick up a free sticker at Surf N Sea. Stick it onto your car, bike, skateboard, etc... From Dec. 13th thru Dec. 24th we'll be cruisin' the island and if our elves spot your sticker, you win! It's that easy! Stop by for more details.*



CITY AND COUNTY OF HONOLULU 2013 Honolulu City Council NOVEMBER 13, 2013 OF HONOLULU

Chair Ernest Martin, Ikaika Anderson, Ann Kobayashi, Breene Harimoto, Stanley Chang, Joey Manahan, Carol Fukunaga, Ron Menor, Kymberly Marcos Pine



Keith Kaneshiro, City Prosecutor  
2013 "TOP COP"

# The International Cultural Friendship Association of Mililani, Hawaii

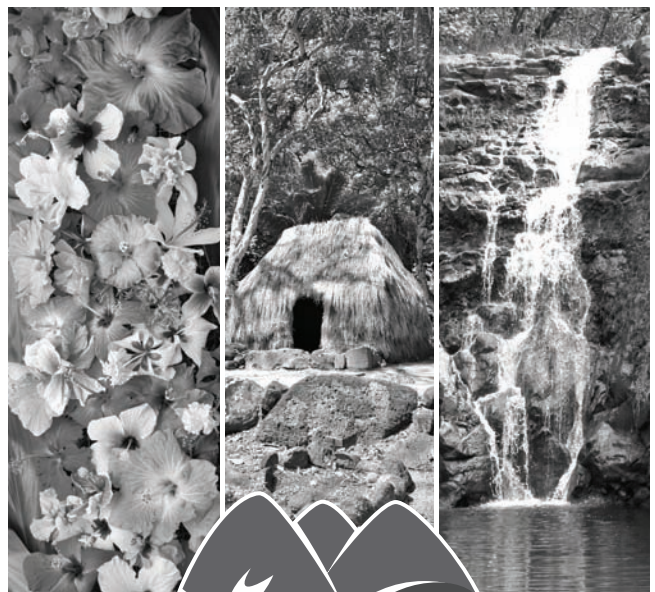
presents a program consisting of:

**Taiko Drumming  
Harmonia Band  
Hula**

**Line Dancing**

**Sunday, December 1  
4:00 p.m. - 5:30 p.m.  
Waialua Bandstand**

This group returns each year to entertain us at our Waialua Bandstand. Come bring your family and friends and enjoy.  
[www.waialuabandstand.com](http://www.waialuabandstand.com)



## WAIMEA VALLEY

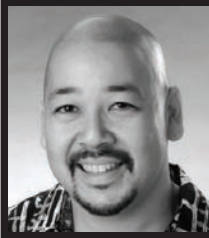
— WHERE HAWAII COMES ALIVE —

**BOTANICAL GARDENS**  
Explore Hawaii's finest collection of rare and native plants, flowers, and wildlife

**CULTURAL ACTIVITIES**  
Discover authentic archaeological sites; learn Hawaiian crafts, games, and more

**WATERFALL**  
Visit the heart of the Valley and swim at Waihi Falls

On the North Shore across from Waimea Bay • Open 9 AM - 5 PM Daily  
Call: (808) 638-7766 • [WAIMEAVALLEY.NET](http://WAIMEAVALLEY.NET)



**Council Chair**  
**Ernie Martin**  
**Serving You in District 2**

The holidays are rapidly approaching and I want to wish everyone a Happy Thanksgiving. I want to publically thank my staff for their service to the community that often involves long hours at City Hall and in community meetings. I am also thankful for a new addition to my office staff. Trina Ishii, a Waiialua resident, has joined my staff as an Administrative Assistant. She brings years of experience in legislative and community relations from time spent working at the Hawaii State Legislature. Trina has a diverse background of legislative, community and public relations experience in both the public and private sector. Most importantly, Trina knows the district well, both from the perspective as a resident and as a legislative aide.

I feel fortunate to have capable and dedicated employees on my Council staff. As a city employee myself for many years, I know that the City and County of Honolulu has many outstanding employees who are dedicated public servants and who contribute greatly to the efficient day to day operations of City government. In government, as in the private sector, exemplary employees rise to the top. I would like to highlight the achievement of one of these employees who deserves special recognition.

At a recent Law Enforcement Awards ceremony on October 24th this year, Hawaii law enforcement officers were recognized and honored for their service. The list included individuals in private security, county police departments and prosecutors offices, the military, state sheriffs, the U.S. Marshals office, the state Attorney General's and the U.S. Attorney's offices. This year, the individual honored for outstanding service that has benefited the field of law enforcement was Honolulu Prosecuting Attorney Keith M. Kaneshiro, 2013's "Top Cop". With more than 30 years of experience in law enforcement, Keith identified elder abuse, domestic violence, sex assault, drugs, cybercrimes and animal cruelty as priorities. He restored the sex assault unit he created when he first was in office, doubled the size of the elder abuse unit, added deputies to the domestic violence team and provided them with specialized training. He established Hawaii's first courthouse dog program to assist child victims and laid the groundwork for the Honolulu Family Justice Center, a first-of-its-kind facility that will offer long-term transitional housing for victims of domestic violence.

As the Chair of the City Council, I have the opportunity to recognize outstanding employees like

Keith Kaneshiro for their exemplary service to the community. As we celebrate the Thanksgiving holiday with our families, I want to extend a sincere mahalo to all of the dedicated workers in City law enforcement, from the Top Cop to the newest HPD recruit who make Oahu a safer place for us all.

**Next issue December 11, 2013**  
**Deadline November 28, 2013**  
**"Christmas Issue"**

**BLACK FRIDAY SALE**  
**Mermaids & Scoop of Paradise**  
Friday, November 29, 2013  
20% Off Everything  
*Come have a warm holiday drink and shop,shop,shop.*  
Located next to Paalaa Kai Bakery  
66-935 Kaukonahua RD, Waiialua, HI  
**Happy Holidays**

The PKB Ohana wishes you a Happy Holiday Season and a Healthy and Prosperous New Year!

**Paalaa Kai Bakery,**  
Your Hometown Bakery in Waiialua  
A selection of treats perfect for the holiday season!  
Open Daily 5:30am - 7:00pm

www.pkbsweets.com



*North Shore  
Outdoor  
Circle*

**We need your support  
Join the North Shore Outdoor Circle!  
Help us keep Hawai'i clean, green,  
and beautiful.**

For over 100 years, The Outdoor Circle has successfully helped protect and improve Hawaii's environment. We are the local "go to" organization for all things clean, green and beautiful.

Speaking with residents from areas outside of the N. Shore, the most common and invalid assumption is that our organization only focuses on the preservation of trees. The Outdoor Circle does much more than preserve historical trees throughout the State of Hawai'i. Since 1912 the Outdoor Circle has actively protected the beauty of Hawai'i, not only through tree preservation and sign ordinances, but expanding its scope to include green space protection, view plane preservation, tree advocacy and many other issues that impact the quality of life for our communities. As our beautiful state continues to attract visitors from around the world, we are also focused on the quality of the Hawai'i experience for millions of visitors as well.

We need your support - become a member of the North Shore Outdoor Circle and make your voice heard.

Learn more about the Outdoor Circle and become a member by going to our website: [www.outdoorcircle.org](http://www.outdoorcircle.org). Or email us at [nsoc@hawaii.rr.com](mailto:nsoc@hawaii.rr.com) and we would be happy to send you a Membership form. Basic membership cost is \$25.

Aloha and Mahalo!

**COMPUTER  
PROBLEMS?**



**I can fix any PC or MAC at  
your home or business**

For fast and friendly service call  
Chris at 371-3089

## SALON LA SIRENA

**Grand Opening Special  
Full Highlight & Haircut \$100**

First time clients

A new eco friendly,  
Green Salon on the North Shore

Owner Gina Walker

Haircut, Highlight and Color Specialist

Hairdresser to the Stars from  
Malibu, CA. 20 yrs. experience.

Call for a free consultation

Shop 637-6869

Cell 375-3984

## North Shore Properties For Sale

**67-397 Waialua Beach Road Beach Front**  
3/2 home on 29,577 sq. ft. of land zoned F-5.  
Sandy beach, views to Waimea. Go to [hicalentral.com](http://hicalentral.com) MLS: 201332712 and see photos and virtual tour. \$2,300,000.00

**59-048 Kam. Hwy. Minutes to Sunset Beach**  
4/2 home on 44,388 sq. ft. of country zoned  
land plus a large workshop/storage building  
in back. Go to [hicalentral.com](http://hicalentral.com) MLS 201334930  
and see photos and virtual tour. \$1,500,000.00

**59-510 D Alapio Road**  
87,120 sq. ft. of country zoned land. Build your  
dream home with ocean views on this incred-  
ible Pupukea Lot. MLS 1304494 \$830,000.00  
(priced at appraisal)

Marianne M. Abrigo, Realtor  
Marianne Abrigo Properties  
808-637-3511  
[mabrigo222@aol.com](mailto:mabrigo222@aol.com)



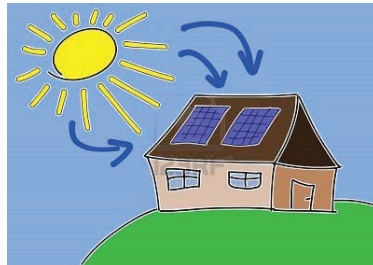
**WAIALUA**  
Federal Credit Union



**Looking to install Solar Photovoltaic?  
Consider a Home Equity Loan from Waiialua FCU.  
No closing costs and a low interest rate can help you on  
your way to lowering your electricity bill.**

**Current HELOC Rate is 3.75% APR\***

\*Annual Percentage Rate based on an index of 3.50% plus the monthly average of the 26 week Treasury Bill (Auction High) and may be adjusted annually each March. Please call for more details.



Your savings federally insured to at least \$250,000 and backed by the full faith and credit of the United States Government

**NCUA**

National Credit Union Administration, a U.S. Government Agency

You are eligible to join if you live or work in Waiialua or Haleiwa.

Phone: 637-5980 Located in the Waiialua Shopping Center



### “Tread Lightly”

A collaboration between artist/diver/chef Kimi Werner & VANS. Exhibit will be installed in the lobby of Turtle Bay Resort throughout the Vans Triple Crown. One-of-a-kind hand-painted men's and women's slip-ons. Shoes will be sold at \$250 a pair, with 100% of proceeds going to Malama Pupukea-Waimea Marine Life Conservation District, and Sustainable Coastlines Hawaii.

**GOBBLE GOBBLE UP!  
PKB SUPER SAVER**

**20% OFF** DOUGHNUT HOLES  
Sale Price: 5 for \$1.00

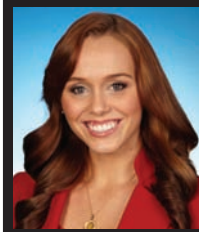
**CORNBREAD** **20% OFF**  
Sale Price: \$.76 each

**20% OFF** LONG JOHN  
Sale Price: \$1.00 each



Special prices valid 11/27-12/10. Not combinable with other promotions, discounts, or PKB VIP cards.

[www.pkbsweets.com](http://www.pkbsweets.com)



**Representative  
Lauren  
Matsumoto**  
Serving You in District 45

**Giving Thanks**

As we come up on Thanksgiving 2013, it's important to understand the significance of this annual holiday. Thanksgiving was first celebrated in what is now America in 1612, in honor of the bountiful crops which were harvested that year. Fast-forward to 1863, President Abraham Lincoln declared Thanksgiving a national holiday by presidential proclamation.

Fast-forward to today, all over the country Americans write shopping lists a mile long, clip coupons, and rush to the grocery stores, to cook a Thanksgiving feast for family, friends, and those without food and shelter. I myself am a lover of food, but is there something more important than enjoying the yearly five-course turkey dinner? Yes, Thanks Giving! Often times we are so focused on impressing family and friends with culinary delights, the notion of giving of thanks disappears from the event.

There are many things for which I am thankful. First and foremost, my heart goes out those affected by the recent typhoon in The Philippines. We in Hawaii and the United States are able to render aid to those there in need of life's most basic essentials, and for that I am grateful. To the nearly 16,000 people who emailed and called me with opinions on the recent Special Session, I am thankful that regardless of your position, you reached out to me. In America we have freedom of speech, the right to assemble, the privilege to vote, and the peaceful transfer of government. Many people in countries all over the planet live under the constant threats of persecution and dictatorship, with no access to their government or governing powers. We are fortunate and advantaged to live in America. No, it is not perfect. But then, what is?

I am grateful to live in Hawaii, and especially humbled to be your representative in the Capitol. This Thanksgiving, please spend some time reflecting on our freedoms, as well as food, family, and friends. Best wishes for a safe, healthy, and happy holiday!



**BANZAI PRODUCTIONS**

**Video - Media  
Need Web Video  
Ask About Our  
Special Rates**

**808-781-2535**

**Everyone is invited.**  
**St. Michael School**  
**Holiday Extravaganza**  
 Friday, December 6, 2013  
 St. Michael School  
 4:00pm - 9:00pm



**Food, Crafts, and a silent auction**  
**to help support St. Michael School!**

**Looking for vendors/crafters.**  
**call #637-7772**  
**or email [stmichaelh@hawaii1pr.com](mailto:stmichaelh@hawaii1pr.com)**

**North Shore Recycling Service**  
*Curbside recycling pickup services  
 for homes and businesses*

- Two pickups per month at only \$24 per month (2 curbside recycling bins included)
- 100% of the recyclable donated to non-profit organization

**Visit us at [www.ocr2000.com](http://www.ocr2000.com)**  
**To sign up call us at 262-2724 or**  
**email: [recycle@ocr2000.com](mailto:recycle@ocr2000.com)**



ROBERT M.  
**PAGAN CONSTRUCTION COMPANY**

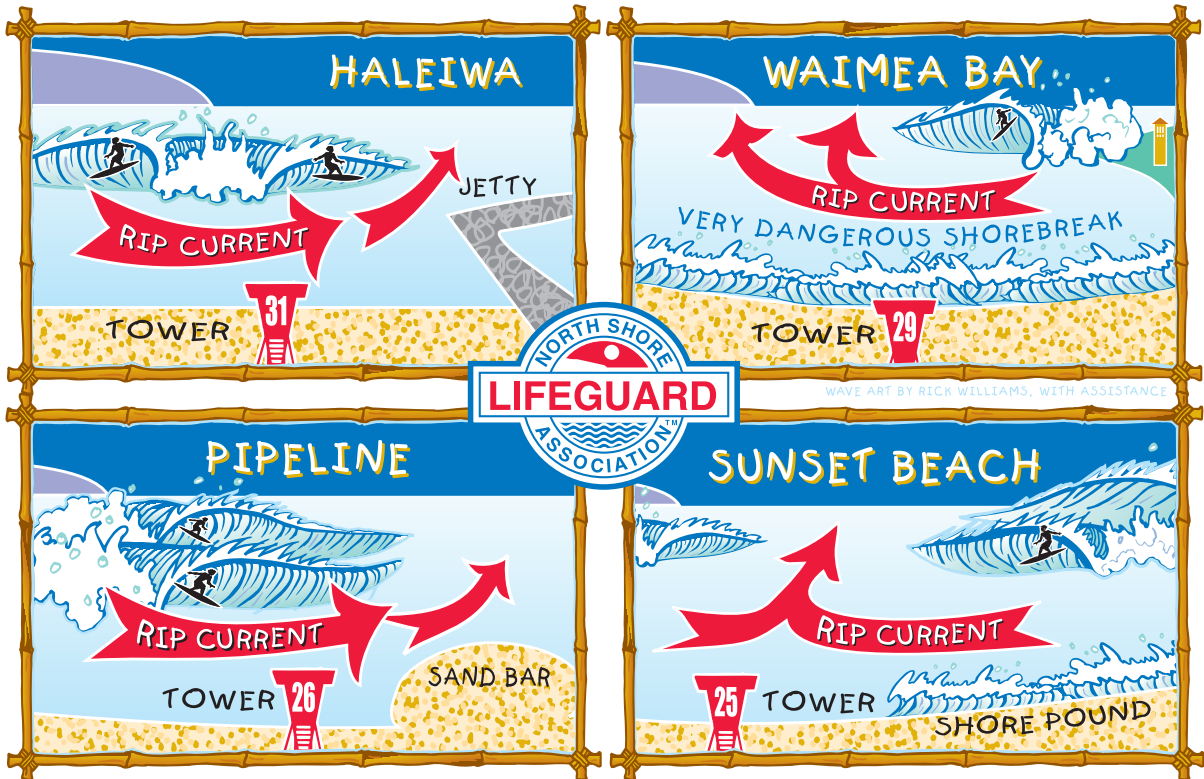
**(808) - 499 - 8617**

New construction / Additions / Remodels - Lic # 32866 Bonded / Insured  
[www.robertpaganbuilders.com](http://www.robertpaganbuilders.com)



# North Shore Surf Safety For ALL surfers and beachgoers!

## BEWARE THESE DANGEROUS RIP CURRENTS:



▶ The waves in a big swell come in “sets” of four to six waves followed by a “lull” - a deceptively calm, flat period that can last up to 20 minutes. People will often walk out onto the rocks, or stand at the water’s edge during a lull and then have to run for their lives when the set rolls in. Keep your family safe - stay on dry sand.

## BIG SURF SAFETY TIPS

- ✔ Swim only at lifeguarded beaches.
- ✔ Check with lifeguard for conditions.
- ✔ Read and obey the posted signs.
- ✔ Watch your children carefully. Hold on to young ones and stay off wet sand areas.
- ✘ DO NOT turn your back to the ocean!
- ✘ DO NOT try to swim at the water’s edge during big surf!
- ✘ DO NOT surf or body-board unless you’re an expert.
- ✘ DON’T rely on your surf-board or leash as a substitute for your swimming ability.
- ✘ DO NOT DRINK ALCOHOL and swim!
- ✘ DON’T LEAVE VALUABLES IN PARKED CAR!

[www.northshorelifeguards.com](http://www.northshorelifeguards.com)

A public service notice from the North Shore Lifeguard Association (with the very much appreciated assistance of our corporate sponsors).



## First of 101 Perfect Wave Murals and the Largest Wave Mural Completed in Honolulu

On October 19th artist Hilton Alves began painting the world's largest wave mural at 1320 Kalani Street in Honolulu. The mural, five stories tall and four hundred feet wide, was completed on October 26th in a record 8 days. Miraculously the weather stayed perfect for the entire 8 days allowing the artist to complete in time and for onlookers to watch the process transforming the blank and drab wall to an art centerpiece in Honolulu. The concept of the approximately 14,080 square feet mural is bringing the North Shore to the South Shore with an image depicting a beautiful Banzai Pipeline wave scene. This mural is a celebration of Hawaii's surf culture and acknowledgement of Hawaii being an ocean lovers and surfers mecca for the world. At the mural's completion, artist Hilton Alves exclaimed, "I can't believe we finished this massive wall and we are going to paint 100 more around the world!"

This wall is the first in a series of his 101 Perfect Waves International Mural Project created in partnership with Brian Wyland of Hawyland Styles Gallery. Partner Brian Wyland mentioned, "It's just really to show people the beauty of the ocean and help people to get inspired to preserve it and look out for it." The project aims to bring the beauty of the oceans and the power of waves close to people in hopes that they are inspired to protect and preserve the life of the ocean and it's creatures. Students from Halau Lokahi received this message during their visits to the site and also got a chance to hear how teamwork was a crucial element of the project.

Project materials, including 150 gallons of paint, were provided through sponsorship from Vertical Technologies and Al's Tinting Inc. and donations from Planet Sun,

Everpaddle, Once a Month Church, the North Shore News and individual donors. The completion of the mural process from inception was also made possible through the help of volunteers who worked hard for about 6 months to make it come to life. The colossal mural art itself a donation from Hilton Alves to the city of Honolulu and all who will enjoy it and only made possible through donations and community support. Thanks also goes to all who came to visit the mural, those who honked passing by and those who followed Hilton on Facebook during the mural completion process. The artist, and his team, are grateful and appreciative to all who helped this mural become a reality.

For more information you can visit [www.theartof-hilton.com](http://www.theartof-hilton.com). If you are interested in having one of the 101 Perfect Wave Murals in your community, if you have any questions or would like to get involved please feel free to contact Hilton Alves at 382-2098, [hiltonsurfart@hotmail.com](mailto:hiltonsurfart@hotmail.com) or [www.facebook.com/hiltonalves](http://www.facebook.com/hiltonalves).





# HALEIWA ARTS FESTIVAL

FUNDRAISER

**SUNDAY, DECEMBER 1 • 6PM**  
**WAIALUA COMMUNITY CENTER**

Create your very own island inspired masterpiece  
with local artist Erin Browne Delventhal, owner of  
**PAINT THE NIGHT AWAY.**



**\$45 / PERSON**  
Includes all Materials, Instruction  
and Dessert Buffet.  
Families Welcome! Reserve your spot online at  
[PaintTheNightAway.net](http://PaintTheNightAway.net)

Sign up for a 2014 Haleiwa Arts Festival Membership  
and receive a Free Poster while supplies last!



[HaleiwaArtsFestival.org](http://HaleiwaArtsFestival.org)



**400 YARD SWIM  
12 MILE BIKE  
3 MILE RUN**

**BIKEFACTORY  
HALEIWA**

**RUNNER'S HI**  
AIEA • HAWAII



**250 PARTICIPANT LIMIT  
CHIP TIMED • CUSTOM AWARDS**

**TRIATHLON**

**BEACH CRUISER DIVISION**

**Saturday, March 1, 2014 • 6:30 am Start • Haleiwa Beach Park, Oahu**

**COURSE**

SWIM: A safe, fast 400 yard course inside Puena Point.  
BIKE: 3 loops of Haleiwa town following Kam Hwy., and the by-pass road, 12 miles total. Safe, fast, with two small hills.  
RUN: A 3 mile out & back. Approx. 1.4 mile is a BEACH RUN in soft sand near Police Beach. Be prepared. Safe & Fun! [Run course is pending approval and may be altered.]

**ENTRY FEE/DEADLINE**

**INDIVIDUAL: \$90, TEAMS: \$120.** Includes t-shirt. Entry fee is non-refundable. Entries must be received by February 17, 2014. No t-shirt guarantee after this date. \*On-line registration ends midnight, February 17, 2014.

**LATE FEE**

ADD \$10 after deadline. Day of race entry: \$100, teams: \$130. We reserve the right to refuse entry to anyone for any reason.

**MAIL TO**

Haleiwa Triathlon, Attn: Linda Moran, 94-463 Alapine St., Waipahu, HI 96797-4515. Make checks payable to: North Shore Triathlon.

**FOR MORE INFORMATION**

372-8885 or email: northshoretriathlon@gmail.com  
hawaiiiswim.com



**DIVISIONS/AWARDS**

INDIVIDUAL: Elite, all standard 5 year age groups, male & female. Awards to top 3 in each division. BEACH CRUISER (no gears): First male & female overall. RELAY TEAMS: Men, women & mixed. Awards to members of the top 3 teams in each division. (No relay division for beach cruisers)

**RACE NUMBER & PACKET PICK UP**

TUES., Feb. 25, 3PM-6PM: BIKEFACTORY HONOLULU  
WED., Feb. 26, 3PM-6PM: BIKEFACTORY WAIPIO, 94-1388 Moaniani St.  
THUR., Feb. 27, 3PM-6PM: RUNNER'S HI  
FRI., Feb. 28, 4PM-6PM: RACE SITE  
\$5 DONATION for "We the People of Kahuku High School" for day of race packet pick up.

**CHECK IN & RACE MARKING**

SAT., MAR. 1, 5AM-6:15AM

Register on-line:  
**active.com™**

**FREE CUSTOM HAT  
for Entries received by January 1!**

online entry at [www.Active.com](http://www.Active.com)

|                      |  |            |  |   |     |  |               |        |      |       |    |
|----------------------|--|------------|--|---|-----|--|---------------|--------|------|-------|----|
| LAST NAME            |  | FIRST NAME |  | F   | M   | AGE  | DATE OF BIRTH | S      | M    | L     | XL |
| STREET ADDRESS       |  | CITY       |  | STATE   | ZIP | PHONE                                      |               |        |      |       |    |
| RELAY TEAM LAST NAME |  | FIRST NAME |  | F   | M   | AGE  | DATE OF BIRTH | S      | M    | L     | XL |
| RELAY TEAM LAST NAME |  | FIRST NAME |  | F   | M   | AGE  | DATE OF BIRTH | S      | M    | L     | XL |
| EMAIL ADDRESS        |  |            |  | <input type="checkbox"/> BEACH CRUISER DIVISION |     | <input type="checkbox"/> RELAY (check one) |               | FEMALE | MALE | MIXED |    |

Waiver & Release Statement: I AGREE to comply with the rules, regulations, and event instructions of the Haleiwa Triathlon. I know that competing in a triathlon may be hazardous, I am aware of and assume all risks with participating in this event. In consideration of this application being accepted, I, the undersigned, intending to be legally bound, hereby, for myself, my heirs, executors and administrators, waive and release any and all rights and claims for damages I may have against race officials, volunteers, sponsors, Estate of Bernice Pauahi Bishop, BIKEFACTORY, North Shore Triathlon, the City & County of Honolulu and the State of Hawaii resulting from my involvement in this event. I will additionally permit the free use of my name, photograph and interviews in association with this event. I broadcast, telecast, advertisements, films, videotapes of any reproduction thereof.

|   |                    |
|---|--------------------|
| INDIVIDUAL ENTRY (by 2/17/14)                   | \$90               |
| TEAM ENTRY (by 2/17/14)                         | \$120              |
| LATE ENTRY (after 2/17/14)                      | ADD \$10           |
| DAY OF RACE ENTRY                               | \$100 / \$130 TEAM |
| TOTAL ENCLOSED                                  |                    |
| Make check payable to:<br>North Shore Triathlon | \$                 |

|   |  |      |
|---|--|------|
| I have read and understand the waiver above. Signature(s) | Parent's signature if entrant is under the age of 18 | Date |
|---|--|------|

## Hawaiian Mai'a Keiki Need Good Homes

*By David Orr, Botanical Collections Specialist, Waimea Valley, North Shore of O`ahu*

Thirty three years ago over 26 varieties of banana, mai'a, named and developed by early Hawaiian were on display in Waimea Valley. Many were brought by hikers who would find stands in remote valleys or areas being cleared for H-3, and some came from the UH research and experimental stations in Waimanalo and Hilo. Waimea pioneered in showing the varieties of food crops descended from the early canoe plants brought by the Polynesians. Today over 70 varieties of kalo are grown here and we've shared our collections of 'uala (sweet potatoes) with gardens all over the state, but our mai'a collections really need help. The main threat is the world-wide Banana Bunchy Top Virus carried by aphids, and Hawaiian mai'a is particularly susceptible. One of the state's best collections was destroyed in a flood that hit Kahanu Gardens, near Hana, Maui two years ago. A decent collection remains at the Amy Greenwell Ethnobotanical Garden near Captain Cook on the Big Island, but BBTV has been detected in the area and has recently been found in some of the best remaining private collections on Maui and the Big Island.

Here are some grim numbers: Of the 40 recorded mai'a varieties, only 19 are still around, and all should be considered endangered. The five "most abundant" of these remaining varieties number between 2500 down to 500 plants. The other 14 are so rare that only one to a hundred plants of each variety are still alive anywhere!

Essential reading: *The World of Bananas in Hawai'i: Then and Now* is a comprehensive, well-illustrated book by Angela Kay Kepler and Frank Rust has the lore, identification and planting tips. Angela and Frank teach both banana care and rewards – the sweet nectar in the flowers and recipes which dem-

onstrate that Hawaiian mai'a, though edible raw, develop rich flavors when cooked with spices.

There is hope that BBTV can be conquered through micropropagation, but the process is expensive and time consuming. The best strategy for now is getting healthy plants growing in as many places as possible. BBTV is half the problem, the rest is the scarcity of these plants in cultivation. We're now generating more keiki than we can replant in the valley, so we'd like to farm out keiki to responsible gardeners in the North Shore community for \$10.00 per plant. All Hawaiian mai'a should be considered endangered, and growing a specimen of known origin requires a commitment in time, work and money. Keiki coming from Waimea Valley may be infected, but symptomless, so they should not be planted anywhere near healthy stands. BBTV symptoms are streaks appearing on discolored, not fully emerging leaves. Unfortunately, there's no guarantee that a random infected aphid won't bite a clean plant, but luck and good care it should survive to give you food and more keiki to pass on to your friends. To discourage the aphids, plants can be periodically sprayed with soapy water on the crown and into the folds where the leaves emerge. Our hope is that virus-free plants can be multiplied, stored and reintroduced to places which have eradicated the disease. This may be our last chance to save this precious living heritage of our islands' first inhabitants. For details please call David Orr at (808) 638-5876.





Waimea Bay, November 13, 2013. *Photo: Banzai Productions*



Mason Ho free sesh at Pipeline. *Photo: Banzai Productions*



## BANZAI NORTH SHORE WIRELESS

He is the surfer that makes you smile. Mason Ho made the North Shore proud when he won the HIC Pro at Sunset Beach recently. Ho, 25, also won every heat on his way to the podium in varied conditions and sizes clinching the win with a peaky tube ride that could be found by only experienced Sunset surfers. Ho lives right down the street and calls Sunset his local spot. "It feels great to win in front of all my best friends and all the people that I walk past every day," said Ho. "It's always been a goal in my life to win contests, but to do it here at home... I've never really won a (world tour contest) before and I've been doing it for years, so I'm really happy." Mason Ho won \$15,000.00 for his efforts and a wildcard spot into the Triple Crown of Surfing in the round of 64 surfers in the first two events. He also is the ASP regional champion. This is big. Mason could upset the top pros and be the dark horse we all scream at the top of our lungs for. He is not only a great surfer from outstanding roots but he is charming, funny, handsome, overly energetic and bold. Recently he surfed naked in an expression session because he was wearing regular shorts that took in water in the pockets, not good for doing airs. He could be the only surfer ever to do an air naked, now that is something to talk about. Watch for him this season, he could send people home crying or laughing.

It was another Sunset Beach local who took second in what was a very close match up. Pancho Sullivan, 40, has won there several times and just missed out of finding a good tube in the final. Two surfers from Kauai took the other two final spots. Other North Shore surfers that will qualify for seeded positions are Joel Centaio, Torrey Meister and Dusty Payne who grew up here and now lives in Maui.

1st. (\$15,000) - Mason Ho, 25, Sunset Beach, Oahu  
 2nd. (\$7,500) - Pancho Sullivan, 40, Sunset Beach, Oahu  
 3rd. (\$5,000) - Evan Valiere, 29, Kilauea, Kauai  
 4th. (\$3,500) - Gavin Gillette, 27, Kilauea, Kauai

In other contest news world famous surfer and Pipeline Champion Jamie O'Brien will be doing a hide and seek for the Triple Crown events. Jamie O'Brien has been suspended from the upcoming Pipeline Masters (and any ASP event until 2014) following a disagreement with Brazilian surfer Ricardo Dos Santos last August, during the trials at the Billabong Pro Teahupoo. Dos Santos also has been fined and suspended.

Dos Santos was quoted as saying this, "It is a little sad in a way. Jamie is one of the best surfers at Pipe and to see him out of the event because of an impulsive action is a bummer. His suspension does not make me the least bit happy." The problem occurred when they both needed scores to get through the heat and a paddle

battle ensued. Arms went flying to the head and later Dos Santos got a slap. The fans though are the ones to miss out as Jamie is a local favorite and another one that could upset the whole numbers game. We will be looking for O'Brien to surf in the Volcom Pro coming up in January at Pipeline. Good luck there!

A big swell sort of snuck up on us November 13th, an early 15-20 foot NNW swell that had a rare direction for this time of year. It was an exciting day for big wave surfers and a chance to surf a spot that has not been ridden a lot, Aligators. It was also a sad day because we lost one of our own, Kirk Passmore. Kirk was a big wave rider who has been visiting Hawaii since he was 14. He was an experienced big wave surfer who traveled to catch the big swells of Mexico and Northern California. Kirk was a well liked guy who was a partner of Third Stone Surfboards in Waialua and a manager at Banzai Sushi in Hale'iwa. He was lost on November 13th after catching one of the biggest sets of the day. It seems God needed him more than us, he will be missed!

The Third Stone Surfboards "Bert Art Show" is coming up Friday, December 13th. It is a benefit for the Hale'iwa Elementary School. Third Stone makes custom surfboards but has always been the gathering place of artists as well. Hope to see you there in Kirk's memory.

There is now an IBA, International Bodyboarding Association, Hawaii regional tour. Former professional bodyboarder and World Champion Ben Severson is now the tour director and things are going strong for the local events. Right now there are four events slated for the Hawaii region which is great for our budding Hawaii talent. It makes sense to have events here on a consistent basis, we have the best waves and some of the best bodyboarders ever. "My brands, Science Bodyboards, MS Viper and Gyroll are honored and excited about the opportunity to sponsor the IBA Hawaii Tour," said Mike Stewart, 9 time World Champion. "We are in this for the long haul and envision building this contest series to having 6-8 events in a calendar year and tour stops on all islands. I can see the IBA Hawaii Tour progressing Hawaiian bodyboarding in a big way giving our Hawaiian talent the chance to be a huge force on the international bodyboard scene." Bodyboarding has been a force, especially at Pipeline, a perfect place for the sport and it's exciting gymnastic like maneuvers. The tour also has a Women's division but they have been slow to sign up for the series of events. Lets go girls, carry on the tradition that started back in 1989 at Pipeline!

Aloha. Email me with news at [banzaib@hawaii.rr.com](mailto:banzaib@hawaii.rr.com). Let's talk surf!

# Give the Gift of **LIFE**



Tuesday, December 10  
7:00 a.m. to 1:45 p.m.

Waialua High and Intermediate School  
Gym Parking Lot  
in the Bloodmobile

Future Dates:  
Monday, February 3, 2014  
Monday, May 12, 2014

**1 hour can save 3 lives.**

Contact Mrs. Pescaia, NHS Advisor, for more info:  
ph. 808-637-8200 or email [vpescaia@waialuahigh.com](mailto:vpescaia@waialuahigh.com)



**Blood Bank of Hawaii**

*Give Blood. It's Safe. It's Simple. It Saves Lives.*

Please bring a valid photo I.D. with birthdate | Be sure to eat well and drink plenty of fluids before donating  
Drive date, time and location are subject to change

## SEND A SOLDIER SANTA

Help us make the holidays special for  
our deployed troops!

Waialua High's National Honor Society  
is collecting holiday items to send  
abroad:

Hot Chocolate, Coffee,  
i-Tunes Gift Cards, Candy, Handmade  
or Mini-Ornaments, anything  
"Hawaiian"

Bring donated items to Waialua High  
School's office by December 10...you  
may even drop off at the Blood Drive!

Contact Mrs. Pescaia for more info:

808-637-8200 or  
[vpescaia@waialuahigh.com](mailto:vpescaia@waialuahigh.com)





# Turtle Bay Resort Installing Solar Rooftop PV System As Part of Sustainability and Conservation Program

## First Solar Installation Atop a Major O'ahu Resort Property

In keeping with its commitment to eco-friendly sustainability and conservation, Turtle Bay Resort is installing a 400 kWh solar rooftop photovoltaic (PV) system, the latest initiative by the resort to reduce its energy consumption and dependency on fossil fuels.

In combination with several other energy saving initiatives that Turtle Bay is implementing this year and next, the resort plans to reduce its overall power demand by up to 50%.

Scott McCormack, Vice President of Real Estate for Replay Resorts and Turtle Bay Resort, said, "These conservation projects are helping us to be more "green" with our operations, as we fulfill our vision for a more sustainable future of Turtle Bay Resort and contribute to the State's goal of reaching 70% energy independence by 2030."

The solar PV system atop the 450-room Turtle Bay hotel is the first rooftop installation on a major resort property on O'ahu. It is being installed in partnership with True Generation, who originated the project opportunity and is overseeing the array's development, and with Sol Systems, who financed the deal with its investor client, Washington Gas Energy Systems, a subsidiary of WGL Holdings (NYSE: WGL). REC Solar is providing the panels and installing the system, which is scheduled for completion in December.

With Turtle Bay's PV system fully operational, this energy savings will result in a reduction in fossil fuel usage equal to eliminating 4.3 million pounds of carbon dioxide emissions over the next 10 years, or the equivalent of planting 350 acres of forest. It will save 1,000 barrels of oil annually, otherwise needed for electricity production.

Turtle Bay's energy conservation program leads all other O'ahu hotels and resorts and is among the most extensive in the state. It includes a recently completed retrofit of its lighting throughout the entire campus, which has reduced power usage for lighting by 30% annually. The lighting retrofit, installed by Hawai'i-based Energy Industries, involved installation of new LED and energy efficient lighting fixtures and lamping

throughout the resort.

In addition, Turtle Bay has installed new powering equipment and gauges that will better manage and balance out the distribution of energy system-wide and prevent wasteful power surges and usage spikes from occurring. Also established was Malama Hui, a group of Turtle Bay employees dedicated to promoting sustainability on property and reducing energy consumption by the resort's workforce.

Turtle Bay's commitment to being energy efficient and sustainable is consistent with a resort experience that thrives on its interaction with the surrounding natural beauty of Oahu's fabled North Shore.

**NOW OPEN IN HALEIWA TOWN**



**10% OFF**  
60 Min Massage  
\*\* Includes neck, Head, Shoulders, & Back\*\*

With this coupon  
66-437 Kamehameha Hwy  
Suite 101A  
(next to Haleiwa Post Office)  
(808) 366-1308

Call for an appointment

**WELCOME TO THE NORTH SHORE!**



**NORTH SHORE CHAMBER OF COMMERCE**  
*An Affiliate of The Chamber of Commerce of Hawaii*

Visit us at  
**66-434 Kamehameha Hwy.,**  
Haleiwa - across from the post office.

- Visitor Information
- Business Services - Printing, faxing, etc.
- Historical Information & Tours



**www.GoNorthShore.org**  
**808.637.4558**

**DRAFTPLANS HAWAII**

- Over 10,000 floor plans & blueprints available for purchase online. Gather ideas for your own design.
- Drafting Service available for new home designs, additions, renovations, decks, fence, rock walls, etc.
- Free property specifications & title search info.

**www.draftplans.com**

Call for free estimates:  
**265-0035**



# Waialua Social Media Professional Named "Top 5" Social Media Influencer of the Year

In an awards ceremony during the 4th Annual Hawaii Social Media Summit, Jason Seaborn, a North Shore social media professional, was recognized as one of the top five social media influencers of the year.

Seaborn, who owns and directs True Communications in Waialua and manages social media for clients in and around the North Shore, was among five to take home the "Top 5" Social Media Award. Others included Gina Salvador, founder of Network808, Brandon Suyeoka, marketing manager at ALTRES, Christa Wittmier, Marketing Director for Young's Market, and Maui blogger and consultant Liza Pierce.

"I was stunned to win, honestly," said Seaborn, "and incredibly humbled to be recognized among those who I consider to be outstanding examples of the industry we work in. It's nice when you keep your head down, work hard, and then look up and realize that other people noticed you did a good job."

Seaborn counts among his clients popular Mexican restaurant Cholo's Homestyle Mexican (Facebook.com/CholosHaleiwa) as well as Waialua Fresh (Facebook.com/WaialuaFresh), a family-owned local-sourced food store.

A total of twelve individuals were initially selected as social media influencers by Technology News Bytes & Emerging New Media to be nominated for the "Top 5" Social Media Award. Besides the Top 5 winners, Erik Blair, Peter Liu, Anne Murata, Linda Sherman, Mike Prasad, Christine Hitt, and Ryan Lew. These 12 individuals have greatly and eloquently impacted their community through a variety of social media platforms, according to Technology News Bytes & Emerging New Media.




**PAPOKUS HAWAIIAN GRILL**  
NORTH SHORE, O'AHU  
Papokus Hawaiian Grill.com  
(808) 840-0223

Call for daily specials  
**840-0223**  
Phone orders welcome  
Come and enjoy  
some local kine grindz!!  
Located next to Haleiwa Post Office



**Professional Tattoo & Body Piercing Studio**  
Located in the Waialua Shopping Center Near the Old Sugar Mill  
**808-312-3444**  
Custom Designs · Re-Do's · Cover-Up's · Free Consultation  
[oahutattooink.com](http://oahutattooink.com)

No job too big or small.  
Located at the Waialua Sugar Mill.



**CERTIFIED WELDING FABRICATION & REPAIRS OF ALL METALS**



**628.8719**



**HALE'IWA  
CHRISTMAS  
PARADE!**

*Friday  
December 13, 2013  
Begins at 6 p.m.  
from Weed Circle to  
Hale'iwa Beach Park*

*Sponsored by  
North Shore  
Chamber of Commerce*

*To participate contact  
the Chamber at  
637-4558*

**WAIALUA FARMERS'  
COOPERATIVE MARKET**

HISTORIC WAIALUA SUGAR MILL GROUNDS  
Saturdays 8:30am - 1:00pm

Buy Directly From Our Local Farmers  
TWIN BRIDGES FARM  
KAHUKU FARMS  
WAIALUA FRESH  
DEL TROPICAL FLOWERS  
T & L FLOWERS AND PALMS  
WAIALUA COOPERATIVE FARMERS  
FIELDS OF ALOHA

TASTE OUR WAIALUA FOOD PRODUCTS  
FRANCIS BARBQ CHICKEN  
NONI FRUIT LEATHER & LOTION  
KALENA POLYNESIAN FOODS & CRAFTS  
SOMETHING SPECIAL TARO CAKES &  
BISCUITS  
NORTH SHORE GOODIES  
The original coconut peanut butter  
AND MORE

A FARMERS' MARKET MANAGED BY  
FARMERS  
Edith 637-8589

**BULLETIN BOARD**



**GREEN REALTY GROUP**  
*Hawaii Real Estate Professionals*

Lahela Keliikuli  
Realtor® (S)

808.358.8862  
1888 Kalakaua Avenue, Suite C312, Honolulu, HI 96815  
lyk808@gmail.com • www.GreenRealtyGroupHawaii.com • fax 808.293.1302



**Ernie Doak Plumbing, Inc.**  
*Quality without Compromise*

NEW CONSTRUCTION ♦ RENOVATION ♦ SOLAR  
*Serving Oahu's North Shore for over 20 years*

**ERNIE DOAK** cell **295-7943**  
Lic. #CT-22113 office 638-8620  
Lic. #PJ-10630 erniedoakplumbing@yahoo.com

**Jerry's Pizza**  
**637-8866**

Fresh Pizza • Subs • Pasta & Salad!  
Delivery in Haleiwa Town & Waialua  
Open 7 days a week • 7 a.m.-9 p.m.

**SALON LA SIRENA**  
An Eco Friendly Green Salon  
Eco-Fin Organic Grand Opening Specials  
Full Color, Cut & Style \$75  
Mani/Pedi \$40

Michele Popek  
723-1366 637-6869  
Waialua Shopping Ctr. across from Jerry's Pizza

# BULLETIN BOARD



Specializing in vegetarian foods, vegan foods, whole foods, organic food. Wheat free, dairy free, raw foods, gluten free. A complete selection of natural foods for 39 years. Make earth day, everyday. Open 7 days. Mon.-Sat. 9am-7pm. Sun. 9am-5pm  
66-445 Kam. Hwy  
Haleiwa, Hawaii 96712  
Next to the Post Office  
808-637-6729 • 808-637-1922 fax



**DR. PORTER TURNBULL**  
Chiropractic Orthopedist  
(808) 638-8740  
Appointments available Mon.-Sat. (evenings by appointment)

- Industrial accidents & auto injuries
- Sports injuries • Spinal care
- Safe, Effective, and Gentle

## N-C PLUMBING & SUPPLY

Cont. Lic. No. C-8913



- RESIDENTIAL & COMMERCIAL SALES & SERVICE
- CONTRACTING & DESIGN • HOME PLUMBING SERVICE
- PLUMBING FIXTURES, HEATERS • FREE ESTIMATES

Nestor P. Calilao (Owner)  
P.O. Box 769  
Waialua, HI 96791

Bus: 637-8662  
Res: 638-5157  
Cellular: 372-8718

email: nncplumbing@hawaii.rr.com



**Jay Oku**  
Loan Officer

(808) 393-0707  
Office: (949) 281-3076

jay.oku@academymortgage.com  
academymortgage.com/jayoku

1833 S. Coast Highway, Suite 210, Laguna Beach, CA 92651  
NMLS #218211 | State Lic: CA #CA-DOC218211, HI #HI218211  
Corp Lic: CA #4170013, HI #HI-3113 | Corp NMLS #3113 | Licensed by the Department of Business Oversight under the California Residential Mortgage Lending Act



## Restaurant & Margarita Bar

- DAILY SPECIALS -

Island Fresh Fish Tacos  
Premium Margaritas

Large Parties Welcome Open Daily 9:30am - 9:30pm  
637-3059 • North Shore Marketplace • Haleiwa  
www.CHOLOSMEXICAN.com



LIC. #AG 18275

GENERAL ENGINEERING CONTRACTOR

Full Service Sitework  
Contractor

Septic Systems & Tanks  
25 yr. exp.

Michael Cowper 638-7200  
cowperhawaii.com



Factory Showroom also available  
... Lost, South Point NSP & Accessories  
Located at the Sugar Mill  
638-0050 • 366-2282  
www.SCHAPER-HAWAII



License No. C28113

Commercial • Residential  
Septic • Solar • Design

Mike 630-1407  
Steve@offshoreplumbinginc.com



Kailua  
970 N Kalaheo Ave #A-101  
Kailua, Hawaii 96734  
(808) 254-2339

Kaneohe  
45-1144 Kamehameha Hwy #304  
Kaneohe, Hawaii 96744  
(808) 235-0018

North Shore  
59-712 Kamehameha Hwy A  
Haleiwa, Hawaii 96712  
(808) 638-7883

James J. Choy, D.M.D.  
Stephen D. Shoultz, D.D.S.  
Richard E. Swaja, D.M.D.  
Alan M. Yugawa, D.M.D.

www.alohadentalassociates.com

## Munden Design & Build

Lic.#BC19632

Design • Plans • Permits • Construction  
Additions & New Residences

808 391-8616

Providing quality work since 1978

# North Shore News



# 2014 Schedule

| <b>PUBLICATION DATE</b> | <b>EDITION</b> | <b>DEADLINE DATE</b> |
|-------------------------|----------------|----------------------|
| January 8               | #1             | December 27          |
| January 22              | #2             | January 9            |
| February 5              | #3             | January 23           |
| February 19             | #4             | February 6           |
| March 5                 | #5             | February 20          |
| March 19                | #6             | March 6              |
| April 2                 | #7             | March 20             |
| April 16                | #8             | April 3              |
| April 30                | #9             | April 17             |
| May 14                  | #10            | May 1                |
| May 28                  | #11            | May 15               |
| June 11                 | #12            | May 29               |
| June 25                 | #13            | June 12              |
| July 9                  | #14            | June 26              |
| July 23                 | #15            | July 10              |
| August 6                | #16            | July 24              |
| August 20               | #17            | August 7             |
| September 3             | #18            | August 21            |
| September 17            | #19            | September 4          |
| October 1               | #20            | September 18         |
| October 15              | #21            | October 2            |
| October 29              | #22            | October 16           |
| November 12             | #23            | October 30           |
| November 26             | #24            | November 13          |
| December 10             | #25            | November 27          |

**Direct-Mailed to Every Home**

**MOKULEIA • WAIALUA • HALE'IWA • KAHUKU • LAIE**

**Every Other Wednesday**

**12,000 copies**

"The North Shore's most popular publication" since 1970

(808) 637-3138 • NShoreNews@aol.com • NSN4Linda@aol.com

www.northshorenews.com



The North Shore News is published every other Wednesday and mailed free of charge to all North Shore homes and businesses. Extra copies may be obtained at our office.

**PRESS RELEASE POLICY:** Submit press releases in person or by fax, mail or email to Editor, North Shore News, 66-437 Kam. Hwy., Suite 210, Haleiwa, HI 96712. Please type your releases and keep them shorter than 200 words unless they are of an unusual news interest. Releases should be viable news stories and are published on a **space available basis only**, with priority given to those received in our office first. You may attach photos. We are not responsible for the return of any photos. All materials are submitted at owner's risk. We reserve the right to edit and/or refuse all submissions including advertising.

**EDITORIAL POLICY:** We welcome articles and letters from our readers. Letters to the Editor are published on a space available basis only and preference is given to shortness of length, and quality of content. We prefer to run not more than one letter, per person, per 6 month period. Letters subject to edit.

Views expressed by our contributing writers and advertisers do not necessarily reflect the view of the management and staff of the North Shore News. All rights reserved. Reproduction in whole or part without permission is prohibited. © 2013.

#### Editor & Classifieds

Linda Seyler

#### Typography

Downtown General Store

#### Contributing Writers

Betty Depolito  
Naty Hopewell  
Choon James

City Councilman Ernie Martin  
State Representative Lauren Matsumoto  
State Representative Richard Lee Fale

#### Photography

Banzai Productions  
Trish Coder



Please recycle this newspaper.

# CLASSIFIEDS

## SERVICES

### SHORE ELECTRICAL SERVICE

New Const-Remodels  
638-0049 / Lic#C20777

### Dog/Cat Nail Trimming

at your home only \$15.00  
Call Julie 637-5395

### Lawn Care For You

Mowing, Trimming, Light Hedging  
Call Thomas 637-5839

### PARADISE PLUMBING INC.

New Const • Repairs • Remodels  
808-368-1473 / Lic. 29856

### Handyman Services

Remodeling, Carpentry, Floors,  
Concrete, all parts of Construction  
Call Bob "The nicest guy in the  
business" Ph. 282-2812

### Greekz Plumbing LLC

Complete Service & Repair  
Camera inspection/drain cleaning  
"Got a leak? Call Steve the Greek"  
808-372-1820 Lic#32939

### North Shore Pumping

Septic and Cesspool Service  
Clifford 638-0900 • 291-5099

### EXPERT ELECTRICIAN

Fans, Emergency Services, etc.  
Jim Richards 371-9369

### Construction Services

Kitchens, Baths, New & Remodel  
Free Estimates 721-0847

### Small Engine Repair

Lawn mowers, weed eaters, etc.  
David 808-381-1600

### Breeze Tahitian Black Pearls

Wholesale Prices  
Contact Breanna @ 808-781-3763

### Dillon Sign

& Residential Painting  
Haleiwa 499-9582 20 yrs. exp.

### Paumalu Electric Inc.

C 18074

Residential & Commercial  
New Installation & Repairs  
Renovations. Remodels  
Electric Meter Replacements  
Complete Install for Solar PV  
Dave Hancock 638-9054

### BOW WOW BUNGALOWS

Licensed Boarding Kennel  
North Shore, Oahu  
Reasonable Rates  
Ph. 637-2562  
*These Dogs Have Fun!*

### HARVEY'S REPAIR, LLC

24 hrs Towing Service  
Specializing in opening  
locked car doors  
Call any time 478-0333

### LEARN TO SWIM

AT THE

## HAWAII SWIM SCHOOL

ON THE NORTH SHORE  
Developing swimmers since 1982  
Haleiwa Rd. at Smiley Place  
637-4863

### N.S. Property Maintenance

Complete building & grounds  
maintenance, painting int/ext,  
demolding & power washing  
specialist, carpentry,  
fences & decks  
Chris 381-5213/638-0659

### Minor Skin Irregularities? Stubborn Acne?

Adult & Teens • Skin Irregularities  
Call 748-1448  
Skin Classic &  
Face Reality Specialist  
Free Consultation

### BIKRAM YOGA

5 a.m. Tues & Thurs!  
3 p.m. classes Sat. & Sun.  
\$10 thru November!  
Call for class schedule  
**637-5700**

### Your Clean Home

Vacation/Residential  
Home Cleaning

Affordable • Reliable  
• Green Cleaning

For Free Estimate

Call 638-0262 or 782-9941

### BOBBY'S BODIES

Tuesday evenings at 5:00 p.m.

• Body Toning

Friday mornings at 9:00 a.m.

• Cardio Pump/Fat Burner

For more info: call Bobby, owner of  
BOBBY'S BODIES at 637-4150

### Aloha Computer

PC Repair/Virus Removal  
Fax/Copy/Internet Access  
372-2667 or 237-4558

### SHIATSU • LOMI

Aromatherapy

Milica Barjaktarovic

Lic # MAT8348

351-0848

HumanRemodeling.com

### Golden Rule Lawn Care

Mowing, weed whacking,  
hedge trimming, rake up,  
light weeding & haul away.  
Call Matt 269-5020

### PIANO LESSONS

Guitar, Ukulele, Bass,

Songwriting

**637-4635**

## HOW TO CONTACT THE NORTH SHORE NEWS

Letters to the Editor, and other items submitted for publication consideration may be sent to us via:

MAIL: 66-437 Kamehameha Hwy., Suite 210, Hale'iwa, HI 96712

E-MAIL: NShoreNews@aol.com • FAX: (808) 637-8862

PHONE: (808) 637-3138

Office Hours: Monday-Friday 10 a.m.-3 p.m.

www.northshorenews.com

# CLASSIFIED ADS

**Next Issue - Dec. 11, 2013**  
**Deadline Date - Nov. 29, 2013**

**GERMAN CAR SERVICE**  
Professional-Qualified  
Technician  
Call Gary  
637-6800

**J&L Services Haleiwa**  
Quality Landscape and  
Garden Maintenance. Also  
Pressure Washing, Hedges  
and Plant Installation.  
Call 673-1384 for est.

**ANGELS PLUMBING**  
Repairs  
Remodeling  
Renovation  
**638-7878**  
Lic. #C12004

**THE LAWN RANGER**  
Lawn Maintenance  
no yard too hard  
no lawn too far gone  
We mow betta  
258-6439 Dan Fatchett

  
**Business Services Center**  
Fast & convenient fax, copy,  
scan, computer/internet,  
laminates, etc.  
Across from Haleiwa post office.  
637-4558 or GoNorthShore.org

  
**Marianne Abrigo, Properties**  
Specializing in -  
North Shore  
Real Estate  
Ask for our list of avail-  
able properties and/or a  
free market analysis.  
**Marianne M. Abrigo**  
"Realtor since 1974"  
Office **637-3511**  
Fax **637-0777**  
Email **mabrigo222@aol.com**

**Individual & Family Therapy**  
• Grief & Loss • Habits & Addiction  
• Life Challenges & Transitions  
• Clinical Supervision  
Curielle Duffy, MA, MSW, LCSW, CSAC  
808.633.3437 www.liferecovery.pro

**NORTH SHORE AUTO DETAILING Services**  
Wash, wax, vacuum, water spot removal,  
paint sealant, light buffing  
We also pressure wash sidewalks  
driveways and more  
**For more info**  
Call Billy (808)371-0854  
Prices may change upon inspection  
of vehicles condition and size  
**We are mobile we come to you**

**HELP WANTED**  
**BUSSERS/SERVERS**  
Pizza Bob's in Haleiwa is looking  
for BUSSERS/SERVERS. Experi-  
ence preferred. Apply in person  
at 66-145 Kam. Hwy.

**COOKS/KITCHEN HELP**  
Pizza Bob's in Haleiwa is looking  
for kitchen personnel. Experi-  
ence preferred, but will consider  
training the right people. Apply  
in person at 66-145 Kam. Hwy.

**Retail Sales Surf & Sea**  
Hawaii's Ocean Sports Headquarters  
is always looking for hard working,  
energetic people to become a part  
of our sales team. Good pay, bonus,  
benefits. Ocean sports experience  
and/or bilingual a plus. Apply in  
person daily 9am-7pm  
62-595 Kam. Hwy., Haleiwa

**PRODUCE**  
Now buying assorted fruits and  
coconuts. Call 255-8474

**FOR SALE**  
Chest of drawers \$175, matching  
end tables \$80 ea, coffee table \$80,  
credenza \$85, curio cabinet \$85,  
sofa \$150, please call 450-2489  
for more info.

## MISCELLANEOUS

**New Hope Haleiwa**  
"Anchored to God's word,  
led by his spirit" @Haleiwa  
Elementary School  
9:00am Service  
621-9363

**Classified Ad Rates**  
3 lines (min.) \$18.89  
4 lines \$25.13  
5 lines \$32.45  
1" Box Ad \$41.88  
(29 characters in each line)  
Include your contact information.  
*\*Ads can be dropped off in mail slot,  
mailed, or emailed. Pay by check pay-  
able to: North Shore News or credit  
card by phone order.*  
We reserve the right to refuse any  
advertisement with a full refund.  
North Shore News • 66-437 Kam. Hwy.,  
Suite 210, Haleiwa, HI 96712  
• (808) 637-3138 • NShoreNews@aol.com

**OFF da ISLAND**  
Are you leaving Oahu on vacation or  
business? Do you live on a neighbor  
island, the mainland or foreign coun-  
try and subscribe to the North Shore  
News? Try send us a photo of someone  
in front of a sign or landmark holding  
a copy of the NSN. Email your photo  
along with the person or persons'  
name, community of residence, tele-  
phone number and photo location to:  
NShoreNews@aol.com. Or, mail to  
OFF da ISLAND Photo, North Shore  
News, 66-437 Kam. Hwy., Suite 210,  
Haleiwa, HI 96712. We cannot return  
photos so please send us a copy. Photos  
received become the property of NSN.  
Preference and priority will be given to  
emailed photos.

**Voice of God Ministries**  
Jesus Loves You  
If you need Prayer  
Call 808-373-0294

**Please Report Stranded Sea Turtles**  
Call 983-5730 • Mon.-Fri., 7am-4pm  
288-5685 pager w/ends, holidays  
587-0077 and after hours  
Suspected Law Violations  
541-2727 or 800-853-1964  
NOAA Fisheries DLNR-DOCARE

**Clean Stream Hotline**  
**768-7890**

**For Advertising Rates**  
Call 637-3138  
or go to  
www.northshorenews.com

**Statewide Hotline for Litter**  
**1-888-592-2522**  
Callers need to provide:  
1. License plate number  
2. Make and model of  
vehicle  
3. Date and time and  
location  
4. What was thrown/  
blown

Save the Sea Turtles Int'l and Adopt a  
Beach and Highway Hawaii  
**BEACH CLEAN UP**  
**Last Saturday of every month**  
10 a.m. • 61-529 Kamehameha  
Hwy., Haleiwa, HI 96712  
For more information 808-637-2211  
Check out our website at:  
http://adoptabeachhawaii.com

**Blood Bank**  
Friday, Nov. 29  
7:30am-2:00pm  
Wahiawa General  
Hospital (Blood-Mobile)

**Queen's Open Market**  
Sundays 1pm-5pm  
Liliuokalani  
Protestant Church

**Hale'iwa Art Walk**  
Last Saturday  
of each month  
5:00 p.m.-9:00 p.m.

**North Shore Farmers Markets**  
Haleiwa: 3 p.m. to 7 p.m. Thursdays, at  
Waimea Valley, Pikake Pavillion & Lawn.  
Waialua Sugar Mill: 8:30 a.m. to noon  
Saturdays & Wednesdays 4:40 p.m. to  
7:00 p.m.  
North Shore Country Market: 8 a.m. to 2  
p.m. Saturdays, Sunset Beach Elementary  
School, 59-360 Kamehameha Hwy.

**HALE'IWA CHRISTMAS PARADE**  
**DECEMBER 13, 2013**



**Malama Market Haleiwa:**

Open Daily 7 a.m.-9 p.m.

**Thanksgiving Hours**

6 a.m.-6 p.m.

(808) 637-4520

**Malama Market Makakilo:**

Open Daily 6 a.m.-10 p.m.

**Thanksgiving Hours**

6 a.m.-6 p.m.

(808) 672-9955

**Valid Dates:**

**11/27/13-11/28/13**

## Deals of the Week!

**Autumn Royal  
Black Seedless  
Grapes**

**\$1.69**  
LB.



**Norbest  
Hen Turkey**

Premium Basted, Prime  
Young, Grade A, Up to 16 lbs.,  
Frozen, Limit 2 per Day,  
While Supplies Last!

**\$10.99**  
EA.



**Lay's  
Potato Chips**

Selected Varieties,  
9.5-10 oz.

**2/\$6**



**Hawaiian Sun  
Fruit Nectars  
or Drinks**

Selected Varieties,  
6/11.5 oz.

**\$1.99**



**Coca-Cola  
or Pepsi**  
Selected  
Varieties,  
12/12 oz.

**4/\$15**



**Stove Top  
Stuffing**

Selected Varieties,  
6 oz.

**4/\$5**



**Häagen-Dazs  
Ice Cream**

Selected Varieties,  
14 oz.

**2/\$6**



**Hinode Rice**  
White or Brown,  
20 lbs.

**\$9.88**



**Cupcakes**  
Selected Varieties,  
12 ct.

**\$6.99**  
EA.



**16 Piece  
Country Style  
Fried Chicken**

4 Breasts, 4 Wings,  
4 Thighs, 4 Drums

**\$12.99**  
EA.



**Bud, Bud Light,  
Miller, or Coors**  
30 Pk. Cans

**\$21.99**

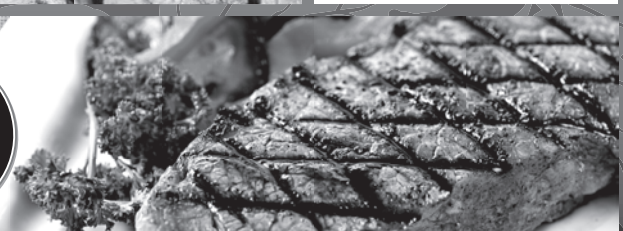


### Thursday

## Grilled Steak Lunch

7-8 oz. Steak, Rice, Tossed Salad, Drink

**\$7.99**



**Hawaii Beverage Fee** Hawaii Beverage Fee of 1.5¢ per can or bottle will be added to purchase price at checkout. An additional Hawaii Deposit Fee of 5¢ will be charged for all specially marked beverage containers.

Limit five units (mix/match) per purchase, unless otherwise specified. We reserve the right to limit quantities. No sales to dealers. Prices plus applicable state tax. Hawaii EBT cards welcomed.