



"E Ala Na Moku Kai Liloloa"

URGENT APPEAL!

Operation: Aloha needs your help to acquire 50 turkeys to feed up to 500 hungry souls on Thanksgiving Day.

See page 5



NORTH SHORE NEWS November 16, 2011 VOLUME 28, NUMBER 23



Menehune competitor Jacob Vieira shows good form (Bernie Baker photo)

Record breaking entries for 2011 Menehune

The 35th Menehune was filled with Fun and some of the best waves ever! Over 350 entries break the record. The first weekend on Oct. 15th/16th the surf was 2+ feet most of the day. Families were

many and the younger menehunes ripped it up! The standout in the 4-6 SB division was Chase Anderson. 24 kidz in that division. The Kokua division as always, is the best. 120 keiki 6 and under

surfing their way to stardom.

The next weekend on Sat the surf was flat... bummer! But Sunday came and with it 2 -3 foot surf and rising. Brother and sister, Wyatt and Megan McHale, both won their divisions! Wyatt... 9-10 BSB and Megan... 10-12 GLB. Congratulations! Another cool feat was Honolua Blomfield winning the 10-12 GSB this year as she won the GLB division last

Continued on page 7

PRE-SORTED STANDARD U.S. POSTAGE PAID Honolulu, Hawaii Permit No. 1479	Hale'iwa, HI 96712 66-437 Kamehameha Hwy., Suite 210
--	---



**ISLAND LEGENDS
ARE BEST VIEWED
WITH A
FULL STOMACH.**

It's the best deal in the islands
—period. See "HĀ: Breath of
Life" for \$25 and enjoy a free
island buffet at the newly
renovated Gateway restaurant.
For reservations, call 293-3333.

KAMAĀINA HOLIDAY SPECIAL

\$25 "HĀ" Evening Show
with **FREE DINNER** at the all-new
GATEWAY RESTAURANT
(a \$70 value)



**POLYNESIAN
CULTURAL CENTER**

polynesia.com

Some restrictions apply. Based on
availability. Must have valid Hawaii
ID. Offer expires 12/31/11. Closed
on Sundays.



Subscribe
to the
North
Shore
News

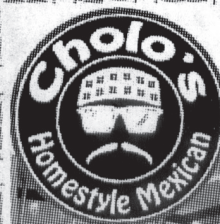
The North Shore News is delivered free to residents in Mokuleia, Waialua, Haleiwa, Kawailoa, Waimea, Pupukea, Sunset, Kawela, Kahuku, and Laie. A subscription is available for other cities on Oahu, Outer Islands, or Mainland U.S. or Alaska for just \$27.00 per year for 25 issues for delivery by standard bulk mail (2-3 weeks Mainland) or \$48 delivered by 1st class postage (3-5 days). You may subscribe by using check, money order or credit card (VISA, MC, AMX).

Mail North Shore News to:

Recipient _____
Address _____
City _____
Credit Card # _____
Expiration _____

Return this form with payment to:
North Shore News
66-437 Kam. Hwy. #210
Haleiwa, HI 96712

CLIP



**Cholo's Homestyle
Mexican Restaurant
& Margarita Bar**



Island Fresh Fish Tacos

**Dine-In
Take-Out**

Burritos • Quesadillas • Nachos
Enchiladas • Fajitas

637-3059

OPEN EVERY DAY
10:30 a.m.-9:30 p.m.



"Hawaii's Best Little
Mexican Restaurant"

All Major Credit Cards Accepted

Located in the North Shore Marketplace
66250 Kamehameha Highway Haleiwa, Hawaii 96712



HAU'OLI LA HO'OMAKIKA'I
November 24, 2011

LET US DO THE COOKING FOR YOU!

Turkey-on-the-Run!

This meal serves eight and includes:

- Roast Turkey
- Hawaiian Sweet Bread Stuffing
- Giblet Gravy
- Fresh Vegetable Medley
- Mashed Potatoes
- Candied Sweet Potatoes
- Cranberry Sauce
- Pumpkin and Maple Pecan Pies



Only \$120 - Limited dinners are available!

Call 447-6504 by November 18 at 3pm - our order deadline.

THANKSGIVING BUFFET
IN THE SUNSET ROOM

Seatings at 3pm & 5pm

With Live Entertainment!

SOUP & SALAD BAR HIGHLIGHTS
 Buffalo Mozzarella, Waialua Tomatoes, Sweet Basil
 House Cured Salmon Salad, Organic Greens & Capers
 Hauula Tomato Bisque ● Blackened Ahi Nicoise Salad
 Spinich Salad, Mandarin Oranges, Cranberry Vinaigrette

COLD SEAFOOD & SASHIMI
 Ahi Sashimi Wasabi, Shoyu, Pickled Ginger
 Maki, Spicy Ahi, Salmon Roll, California Roll, Cone Sushi
 Peel & Eat Shrimp, Cocktail Sauce and Lemon Wedges

CARVING STATION
 Hawaiian Salt Crusted Prime Rib, Creamy Horseradish

HOT SELECTIONS
 Roasted Turkey with Giblet Gravy & Cranberry Sauce
 Fresh Baked Ham with Sweet-Honey Mustard Glaze
 Roasted Waialua Asparagus and Onions
 Hawaiian Sweet Bread Stuffing & Candied Sweet Potatoes
 Roasted Garlic Whipped Potatoes ● Vegetarian Quiche

DESSERT HIGHLIGHTS
 Pumpkin Maple Cheeseake ● Bread Pudding ● Carrot Cake

\$53 Adults | \$26 Children (Ages 4-11)

Tax & Gratuity not included. Please note cancellation policy of \$20/person and cancellations must occur within 48 hours.

Leonardo's

THANKSGIVING SPECIALTY BUFFET | 3pm-9pm

Seatings at 2:30pm, 5pm, & 7:30pm

SOUP & SALAD BAR HIGHLIGHTS
 House Cured Salmon Salad, Organic Greens & Capers
 Hauula Tomato Bisque ● Blackened Ahi Nicoise Salad
 Spinich Salad, Mandarin Oranges, Cranberry Vinaigrette

CARVING STATION
 Hawaiian Salt Crusted Prime Rib, Creamy Horseradish

HOT SELECTIONS
 Roasted Turkey with Giblet Gravy & Cranberry Sauce
 Sautéed Fresh Catch, Citrus Butter Sauce
 Fresh Baked Ham with Sweet-Honey Mustard Glaze
 Hawaiian Sweet Bread Stuffing & Candied Sweet Potatoes
 Roasted Garlic Whipped Potatoes ● Vegetarian Quiche

DESSERT HIGHLIGHTS
 Pumpkin Crunch ● Banana's Foster Station ● Custard Pie

\$48 Adults | \$23 Children (Ages 4-11)

Tax & Gratuity not included. Please note cancellation policy of \$20/person and cancellations must occur within 48 hours.

 **Twenty One**
 DEGREES NORTH

THANKSGIVING FOUR COURSE MENU | 6pm-10pm

1ST COURSE
Grilled Mango ● *Goat Cheese Salad*
 Arugula, Macadamia Nut Balsamic Vinaigrette
 Pairing: Coppola, Sofia Blanc De Blanc, Napa Valley, CA

2ND COURSE
Kabuku Corn Bisque
 Pairing: Cambria Chardonnay, Santa Monica, California

3RD COURSE
Roast Turkey
 Sweet Potato Walnut Compote, Green Beans, Caramelized Onions, Giblet Gravy & Pipikaula Sweet Bread Stuffing
 Pairing: Carpe Diem Pinot Noir, Etna Valley, California

4TH COURSE
Pumpkin Cheeseecake
 Pecan Praline & Vanilla Ice Cream

\$68 without & \$79 with Wine Pairings
 Tax & Gratuity not included.

A la Carte also available.



The Hale'iwa Family Dental Center, Ltd.



presents
"Comfort Dentistry"
 including—

- Relaxation Glasses
- Television Glasses
- Caring Staff
- Special Medication to help you relax
- Laser Cavity Detection
- New Patients Welcome!

Your teeth are much too important to neglect.

Call: 637-9652
 for your reservation

We're conveniently located behind First Hawaiian Bank
 in the heart of Hale'iwa.

Quality Tile Crafts

"No job too big or small!"

Specializing in Ceramic Tile,
 Travertine, Marble, & Slate

Kevin Wilson

cell (808) 864-4985 office (808) 638-8492
 www.QualityTileCrafts.com Free Est.

SIX SPECIAL NIGHTS

MONDAY
\$2.50 BEER
 BOTTLES & DRAFT

TUESDAY
\$5.00 OFF PIZZA
 REGULAR OR LARGE

WEDNESDAY
SALAD NIGHT
 1/2 OFF SALADS

THURSDAY
\$3.50 NIGHT
 \$3.50 SLICES,
 SALADS, MAI TAI'S,
 WINE & BEER



SATURDAY
\$4.50 NIGHT
 \$4.50 SLICES,
 SALADS, MAI TAI'S,
 WINE & BEER (or less)

FRIDAY NIGHT \$6.95 BURGER & FRIES

Dine In Only - 4:00 PM Until Closing - Haleiwa Shopping Plaza - 637-5095

PLUS \$2.00 Off with this Coupon

Some Restrictions Apply. See Restaurant for Details.
 When Ordering Regular Priced Items. Good Anytime. One Coupon Per Person.
 Can Not Be Combined with Other Discounts. Expires 12/31/2011.

Editor's Choice

Wealth vs Poor

(Author Unknown)

One day, the father of a very wealthy family took his son on a trip to the country with the express purpose of showing him how poor people live. They spent a couple of days and nights on the farm of what would be considered a very poor family.

On their return from their trip, the father asked his son, "How was the trip?" "It was great, Dad."

"Did you see how poor people live?" the father asked.

"Oh yeah," said the son.

"So, tell me, what did you learn from the trip?" asked the father.

The son answered: "I saw that we have one dog and they had four. We have a pool that reaches to the middle of our garden and they have a creek that has no end. We have imported lanterns in our garden and they have the stars at night. Our patio reaches to the front yard and they have the whole horizon. We have a small piece of land to live on and they have fields that go beyond our sight. We have servants who serve us, but they serve others. We buy our food, but they grow theirs. We have walls around our property to protect us, they have friends to protect them."

The boy's father was speechless.

Then his son added, "Thanks Dad for showing me how poor we are."

Isn't perspective a wonderful thing? Makes you wonder what would happen if we all gave thanks for everything we have, instead of worrying about what we don't have.

Appreciate every single thing you have, especially your friends!

The Honest Truth

The IRS sent my Tax Return back! AGAIN! I guess it was because of my response to the question: "List all dependents?" I replied: "12 million illegal immigrants; 3 million crack heads; 42 million unemployed people on food stamps; 2 million people in over 243 prisons; half of Mexico; and 535 numskulls in the U.S. House and Senate."

Apparently, this was NOT an acceptable answer.

May today there be peace within.

May you trust that you are exactly where you are meant to be.

May you use those gifts that you have received, and pass on the love that has been given to you.

May you be content knowing you are a child of God. Let this presence settle into your bones, and allow your soul the freedom to sing, dance, praise and love.

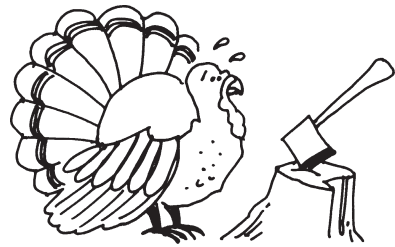
It is there for each and every one of us.

St. Thérèse de Lisieux, 1873-1897
 French Carmelite Nun

LAST CALL!

“urgent appeal”

Can you please kokua



GOT TURKEY?

OPERATION: Aloha needs your help!

Help us feed 500 hungry homeless & needy souls in Hale'iwa on Thanksgiving Day. You can help 2 ways:

1. Donate a frozen turkey 12 pounds or more (or donate several)
2. Sponsor a turkey for \$25 each
Drop off at North Shore News office or call 342-3969.

Deadline is November 19, 2011

Checks can be made out to Once A Month Church (OAMC) & mailed to 66-437 Kam. Hwy., #210, Haleiwa, HI 96712

Call 342-3969 for more information.



FARMER & THE BAKER INC.

(formerly Mokulola Landscape & Nursery Co.)



Fruit & Flower Trees
Palms & Bamboo
Ornamental shrubs
and more...at great prices!

Call John (808) 341-1992



Polynesian Treasures

Hawaii's largest selection of Polynesian handicrafts and Hawaiian inspired gifts.

North Shore Marketplace • Haleiwa, Hawaii
Open daily from 10 a.m. • 808-637-1288

PLACE YOUR PIE ORDER TODAY! PKB IS NOW TAKING ORDERS

Happy Thanksgiving!
Goble goble!



Our delicious flavors include:

APPLE, BLUEBERRY, CHERRY, COCONUT,
CUSTARD, MINCEMEAT, PEACH, PUMPKIN

CALL US @ 637-9775

P.S. Don't forget to order some of our popular butter rolls to go with your Thanksgiving Feast!

NORTHSHORE MENEHUNE SURFING CHAMPIONSHIPS**RESULTS 2011****4-6 BOY & GIRL SHORTBOARD**

1. CHASE ANDERSON
2. SHION CRAWFORD
3. NELSON YERXA
4. NATE DELAMARTER
5. MAIKAI BURDINE
6. DAKOTA BRILEY

10-12 GIRLS SHORTBOARD

1. HONOLUA BLOMFIELD
2. BRISA HENNESSY
3. EVA ASISKOVICH
4. KYANA ROWLAND-NOLASCO
5. SALLY COHEN
6. MOON OTTEMAN

7-9 BOYS LONGBOARD

1. DYLAN FRANZMANN
2. ZION OTTEMAN
3. KAIKO A GARCIA
4. KASHEN PIBER-MCCORMICK
5. REEF LEE
6. DIEGO HANCOCK

11-12 BOYS SHORTBOARD

1. FINN MCGILL
2. BARRON MAMIYA
3. MAKANA PANG
4. NOA MIZUNO
5. WENDELL LEONG-TITCOMB
6. KAMERON DOWIS

7-9 GIRLS SHORTBOARD

1. SARA WAKITA
2. ANGELINA YOSSA
3. AIKA DOUGHERTY
4. MAHEALANI YEN
5. JASMINE CRAWFORD
6. MAYUKA KELLY

10-12 GIRLS LONGBOARD

1. MEGAN MCHALE
2. KA'ANOHI KALAMA
3. NAMI DOUGHERTY
4. MALIA MITCHELL
5. KAIMANA OLIVEIRA
6. TABATHA KNUDSON

9-10 BOYS SHORTBOARD

1. WYATT MCHALE
2. REEF TSUTSUI
3. KEOLA AUWAE
4. TAHITO A LOUIS-PERKINS
5. KAIU SON
6. THOMAS SCHILLER

7-9 GIRLS LONGBOARD

1. TENAYA RICHARDSON
2. AYL A SPRECHER
3. OLIVIA YOSSA
4. GABRIELLA KNUDSON
5. ISABELLA DURAZZO
6. MARY JANE WHITE

7-8 BOYS SHORTBOARD

1. ISAIAH BRILEY
2. ELI HANNEMAN
3. ANTHONY NUNEZ
4. THATCHER JOHNSON
5. SAM GEERTMAN
6. LUKE SWANSON

10-12 BOYS LONGBOARD

1. KALA THURSTON
2. KANIELA STEWART
3. JULIAN WILLIAMS
4. TREK TANABE
5. GABE BAPTISTA
6. HA'AHEO FOSTER-BLOMFIELD

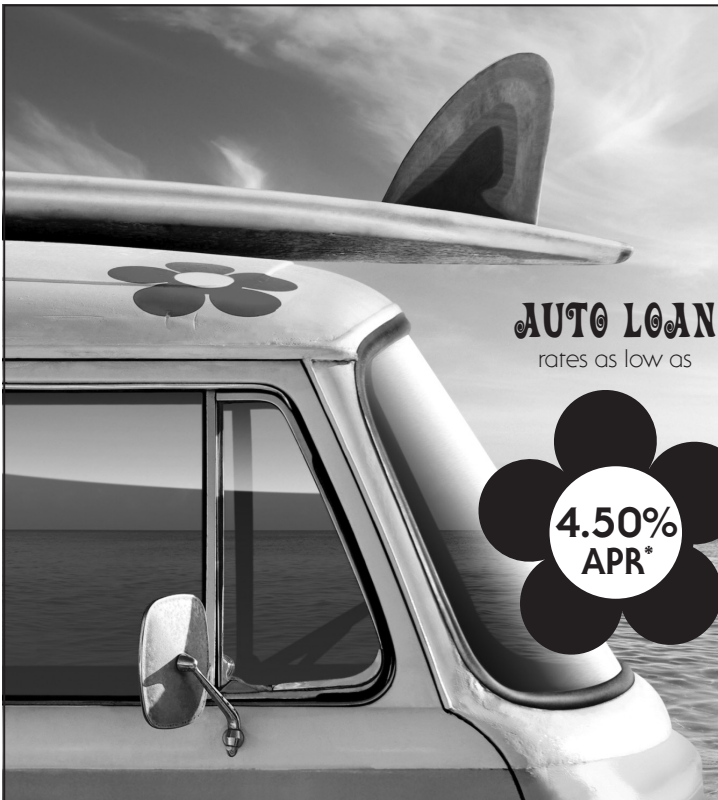
**MENEHUNE SPONSORS 2011**

ACE HARDWARE
 AOKI'S SHAVE ICE
 BILLABONG
 BILLYS BARBER
 BLACK PEARL SOURCE
 BLOMFIELD 'OHANA
 BOARDRIDERS
 BREAKERS
 BROOKLYNHAWAII.COM
 BUBBLE GUM
 BUTTONS
 CAFE HALE'IWA
 CAMP MOKULEIA
 CAPTAIN DONALD
 CELESTIAL FOODS
 CHARLIE WALKER
 CHARMAINES MOA BETTA
 COOKIES
 CHIP LANE
 CHOLOS
 CINO SURFBOARDS
 CLARK LITTLE PHOTOGRAPHY
 CLR STUDIOS
 CONVERSE
 CREATURES OF LEISURE
 DA HUI
 DA HUI WAX
 DAVE RIDDLE
 DEEP ECOLOGY
 DENNIS PANG SURFBOARDS
 DEREK DOERNER
 DR. LELAND DAO
 DRIFT SURF SHOP
 DVS
 88 TEES
 ELECTRIC
 ERIC ARAKAWA
 FIBERGLASS HAWAII
 FILTRATE

FLYGIRLS TV
 FOSTER-BLOMFIELD 'OHANA
 FRITO-LAYS
 FUTURE FINS
 GLOBAL CREATIONS
 GRAVIS
 GUAVA SHOP
 HASA
 HALE'IWA FISHING SUPPLY
 HALE'IWA JOES
 HAWAIIAN AIRLINES
 HAWAIIAN WATER PATROL
 HDX MIX
 HIC
 HSP
 HONEYGIRL WATERWEAR
 HURLEY
 IAM PARADISE
 ISLAND FIN DESIGN
 ISLAND STYLE IMAGES
 JAMESONS
 JC HAWAII
 JOEY VIEIRA
 JUNGLE GEMS
 KAIMI
 KALU
 KAMA'AINA SOUNDS
 KICKER
 KOKUA HAWAII FOUNDATION
 KONOS
 KUA'AINA
 L & O CONTRACTORS
 LEILEI'S
 LIZ BRITTON
 LOCAL MOTION
 LOVES BAKERY
 MAGIC ISLAND PRODUCTION
 MALAMA MARKET
 MIKE MCGILL PHOTOGRAPHY

MIKE MCHALE
 MIKE FOWLER
 MOUNT KA'ALA COFFEE
 MOKU HAWAII
 NALU HAWAIIAN SPIRITS
 NOAH BUDROE
 NIKE
 NIXON
 NORTH SHORE JIU JITSU CLUB
 NORTH SHORE NEWS
 NORTH SHORE SWIMWEAR
 NORTH SHORE SURF SHOP
 NORTH SHORE SURF SHOP HALE'IWA
 NORTH SHORE TACO
 NS AIR CONDITIONING
 NS LIFEGUARD ASSOCIATION
 OLAS
 OLIVIA THE BAND
 ON A MISSION
 ONEILL
 PA'AKAI NOA LCC
 PATAGONIA
 P-BODY
 PEPSI
 PICKLE COMPANY
 PIZZA BOBS
 PODIUM RACEWAY
 POLYNESIAN SOUL
 POLYNESIAN TREASURES
 POWER DRIVE HAWAII
 PYZEL
 QUIKSILVER
 RAGING ISLE
 RAINBOW BRIDGE GIFT SHOP
 RANSOM WAX
 RED GINGER OF WAIALUA
 ROXY
 SALON ATLANTIS

SCHAPER HAWAII
 SCOOP OF PARADISE
 SCREENTECH
 SEAMAIDS
 SMART WATER
 SOUL SURFER THE MOVIE
 STERMAN REALTY
 STICKY BUMPS
 STRONG CURRENT
 SUN BUM
 SURF CO. HAWAII
 SURF N SEA
 SURF NEWS NETWORK
 SURFERS CHURCH
 SURFER MAGAZINE
 TEAM REAL ESTATE
 TEDS BAKERY
 TERRY AHUE
 THE GROWING KEIKI
 THE MISSION
 TIM CARROL
 TOWN N COUNTRY
 TRIPLE CROWN OF SURFING
 TROPICAL RUSH
 VANS
 VESTAL WATCHES
 VITAMIN WATER
 VIRGINIA ABSHIER
 VOLCOM
 WAIALUA BAKERY
 WAIALUA SODA WORKS
 WAIMEA ORIGINAL WORKS
 WAVE RIDING VEHICLES
 WAYNE AGSALDA
 WWW.REXTHESURFDOG.COM
 XCEL WETSUITS
 XM
 ZIONIC



AUTO LOAN
rates as low as

**4.50%
APR***

PEACE ♠ LOVE ♠ GROOVY RATES ♠

Get on board with Waialua Federal Credit Union's groovy rates on auto loans! Whether buying new or used, we'll help you dive headfirst into a great deal with auto loans featuring:

- Rates as low as 4.50% APR*
- Terms for up to six years (seven if the financed amount is over \$25,000)
- Financing for up to 100% of the dealer invoice

Apply today to ride the wave of a great auto loan! Call or stop by to speak with one of our friendly loan representatives.

WAIALUA FEDERAL CREDIT UNION

(808) 637-6737 • (808) 637-5980 • www.waialuafcu.com

*APR=Annual Percentage Rate.



Record breaking entries continued from page 1

year! Way to go girl!!! The BEST SURFER title goes to Finn McGill, for a 'Perfect' 10 scored by all 5 judges on a 5' monster wave. Finn pulled in the barrel with a cover up that would impress Kelly Slater. That was the 11-12 BSB division!

A BIG Mahalo goes out to the Sponsors, Judges, Water Patrol and the many Volunteers that made this year's event the best ever! Especially Co-Director Ivy Blomfield and her crew for devoting so much time and love!

Aloha and See You Next Year,
Skill Johnson ...Co-Director

**T
HE
BEST
THINGS
IN
LIFE,
ARE
THE
HARDEST
TO
FIND!**

Hale'iwa's Most Hidden & Best Kept Secret...



Food . Drinks . Music . Hawaiian

10% off

Mention this Ad & Get 10% off your next visit

10% off

TRY OUR GRILLED AHI MELT! 808.637.0002 Located in the Hale'iwa Town Center

PKB'S THANKSGIVING SUPER SPECIAL

Clip & Save Coupon



Thank you to all of our loyal customers!



PURCHASE (1) PKB PIE AT REGULAR PRICE AND RECEIVE 10% OFF A PURCHASE OF ONE DOZEN BUTTER ROLLS!

OR



PURCHASE (2) PKB PIES AT REGULAR PRICE AND RECEIVE 10% OFF YOUR ENTIRE ORDER

Offer cannot be combined with any other promotion, coupon or discount card. This offer expires on November 31, 2011. Visit www.pkbsweets.com for more deals!

Turtle Bay Resort's SEIS Community Update provided by Replay Resorts on behalf of Turtle Bay Resort

This article is the second in a series of updates to the North Shore News community about the ongoing progress of Turtle Bay Resort's draft Supplemental Environmental Impact Statement (SEIS) Preparation Notice and the Revised Plan (Revised Plan). Turtle Bay Resort (TBR) has the unique opportunity to honor and respect these lands and community by incorporating traditional Hawaiian cultural values into its environmental review process, planning and implementation of the Revised Plan. This series will focus on the critical cultural components of both the SEIS and Revised Plan. For more information and the latest news about Turtle Bay Resort's SEIS, please log onto www.turtlebayseis.com.

First, in developing our Revised Plan for the Turtle Bay Resort, we looked to the past to guide us into the future (Nana I Mua, Nana I Hope – Looking Forward, Looking Back). We researched the history of the land, spoke to kupuna (elders) of the area, and ho'olohe (listened) to the community. Based upon what we heard, we felt the most culturally appropriate way to honor this 'aina was to develop a planning framework inspired by the traditional ahupua'a system to malama (care) for the lands, resources, people, and culture that would ensure sustainability. We've referred to our revised plan as "Tomorrow's Ahupua'a."

While there may have traditionally been many more ahupua'a that encompassed the lands owned

by TBR based upon evolving historic uses, Tomorrow's Ahupua'a encompasses: Ahupua'a 'O Opana-Kawela, Ahupua'a O Hanaka'oe, and Ahupua'a O Kahuku. The three regions of an ahupua'a generally included lands from mauka (mountains), kula (plain, field, open country, pasture), and makai (ocean). Tomorrow's Ahupua'a recognizes the distinct resources and characteristics of each region and it seeks to restore and preserve those unique attributes. Some of our goals include restoring the natural flow of Kawela stream, preserving shoreline access, especially at Kawela Bay by establishing deep setbacks, and utilizing the mauka lands to sustain the makai uses. Tomorrow's Ahupua'a will provide a framework during the planning and implementation process of the Revised Plan by developing architectural, cultural, and operational guidelines that will inform and set standards to ensure that present and future development will adhere to and be consistent with the communities mana'o (thoughts and insights). You can view more of the details on <http://turtlebayseis.com/the-plan/ahupuaa/>

We will continue a dialogue with the community to ensure that issues and concerns that affect the entire community are being recognized and addressed, and that the common principles for the betterment of the land are upheld.

Rell Sunn Aloha Jam III 2011

Rell Sunn Educational Fund (RSEF) will present Rell Sunn Aloha Jam III, taking place at Turtle Bay Resort on November 27, 2011

Featuring: Henry Kaponu ~ Robi Kahakalau ~ Kelly Boy DeLima

Tom Curren ~ Owana Salazar ~ Lehua Kalima & Shawn Pimental.

The delicious Turtle Bay cuisine will be available as you enjoy an incredible evening. Then you can dance the night away with H-Trey, S.I Ladies, and Mz. Royalty.

Tickets range from \$25 General - \$60 VIP includes Dinner Buffet with two (2) drink tickets. Purchase tickets at <http://alohajam3.eventbrite.com>.

Rell was born in Makaha on Oahu in 1950, and was given the Hawaiian name, Kapolioka'ehukai, meaning "Heart of the Sea". During her life, Sunn was a pioneer in women's competitive surfing and water sports. She became Hawaii's first female life-guard on the West Side of Oahu, an original member of the first women's professional surfing tour, one of the founders of the Women's Professional Surf-

ing Tour, and founded the West Side Wahine Surfing Association in Hawaii. Rell cared very much for those in her community, as remembered in how she would assist those in need by guiding many young Hawaiians from troubled childhood into promising careers in surfing through her yearly Menehune Surf Contest at Makaha and Hale'iwa. Many of Hawaii's top professional surfers are veterans of this event and have given back to the community as Rell did. Assisting with Cancer Research, Combating Juvenile Delinquency and teaching the importance of our Environment is what RSEF stands for. Please join us at our 3rd Annual Fundraising event at Turtle Bay Resort for a great cause and an inspirational woman. www.rellsunn.com

It's that time again!

OPERATION: Toy Box



Get in the true Christmas spirit!
 Santa needs your help to provide toys for homeless
 & needy children this coming Christmas morning.

Here's how YOU can help...

You, your family, business or organization can sponsor a keiki or teen in one of the following age groups. You can sponsor more than one.

BOYS

GIRLS

___ 0-24 months old

___ 0-24 months old

___ 2-5 years old

___ 2-5 years old

___ 6-9 years old

___ 6-9 years old

___ 10-12 years old

___ 10-12 years old

___ 13-17 years old

___ 13-17 years old

Please call us to let us know what age group you are sponsoring.
 Gifts will be distributed on Christmas morning at the annual North Shore
 Christmas morning breakfast for the homeless & needy in Hale'iwa.

Please call: 637-3138 or 342-3969 for more info

Christmas is: Sunday, December 25, 2011

(Toy drop-off deadline is Tuesday, December 20, 2011)

Last year, over 500 keiki & teens received numerous new toys & holiday gifts. Over 250 families received bulging grocery bags, and over 900 hungry souls received a delicious hot Christmas morning breakfast. We need your kokua once again.



DROP-OFF LOCATIONS

OPERATION: Toy Box drop-off locations along the North Shore will be announced in our Nov. 30 edition. "Happy Holidays"



**Direct From
Donovan
State Senator
Donovan Dela Cruz**

My staff and I recently attended the disaster preparedness workshop in Mililani and I firmly believe that everyone should be prepared in the event of a catastrophic occurrence that jeopardizes health and safety. We have seen these disasters occurring throughout the world in the form of earthquakes, tsunamis, hurricanes, flooding and fire which are the common ones with less common occurrences such as chemical spills, explosions, and pipeline leaks that can also be devastating.

In Hawaii we have seen devastation by hurricanes, tsunamis, earthquakes and flooding which has caused millions of dollars worth of damages. Fortunately for us, except for the tsunamis of decades ago, we have not had a large number of lives lost with these events. We also have been fortunate in that we have not had frequent occurrences of these disasters. However, we need to be vigilant and not let complacency set in. We need to be prepared. Each family needs to have a disaster plan that includes emergency numbers as well as those of family

doctors; phone numbers of utility companies, someone outside the local area for families to call in an emergency, work, school, hospital emergency room, and pharmacy. You also need to have information on each family member's medical needs as type of medications or equipment; medical condition such as allergies to medications; health information such as high blood pressure, diabetes, asthma, etc. Also include information on insurance – medical, house, car and life (store in a waterproof portable container); pet license number and veterinarian's number; information on vehicles owned by family – model, make, year, license number.

Establish two places where the family can meet in an emergency – one immediately outside your home and another away from home in the event you cannot return to your home. Know where your area emergency evacuation shelters are located. If you have school aged children, you need to determine what is required to release your child someone else if you cannot get there. Ensure that the school has all of your current contact information.

In the home, be sure you know where all of your utility (electricity, water, gas) boxes or contacts are should you need to turn them off. Have five days supply of food and water stored. In a previous article we talked about preparing a disaster kit that each family should have. Check your fire extinguishers to ensure they are properly charged. Test smoke alarms once a month.

Each family should practice what they need to do if an emergency arises so that it becomes automatic if the real thing happens. Your plan needs to be reviewed at least once a year and changes made if updates are needed.

The key to weathering a catastrophic occurrence is to be prepared.

Go
to where the silence is
and say something.

Amy Goodman
American Broadcast Journalist and Investigative Reporter

OPEN IN HALEIWA!



Since 1997

Home of Hawaii's Original Acai Bowl

Serving
Fresh Juices,
Smoothies and Bowls
made with
ALOHA



HALEIWA: 66-215 Kam. Hwy. (Next to Storto's) 637-7774

Also in

KAILUA: 600 Kailua Rd. 262-2383

KAHALA: 4346 Waiialae Ave. 732-7200

**We Pay You
\$100
CASH & FREE
TOWING
for unwanted vehicles
(complete)
636-7183
North Side Towing**

North Shore Chamber of Commerce
Annual Christmas Party & Auction

Honoring
 2011 North Shore Kama`aina of the Year
Aunty Betty Kawohiokalani Ellis Jenkins

Thursday, December 1, 2011 • Turtle Bay Resort • 6:00 p.m. - 10:00 p.m.

Program

6:00-7:00 p.m. — Pupus, No Host Cocktails, Silent Auction

7:00 p.m. — Dinner

8:00 p.m. — Tributes

Please RSVP by November 18, 2011

637-4558

Christmas Attire

Individual Tickets

\$55 member • \$65 non-members



“Aunty Betty” Kawohiokalani Ellis Jenkins to be Honored as 2011 North Shore Kama`aina of the Year Halau o Hale`iwa Founder to be Recognized at Annual North Shore Chamber of Commerce Christmas Party & Auction

The North Shore Chamber of Commerce (NSCOC) is proud to announce “Aunty Betty” Kawohiokalani Ellis Jenkins as 2011 North Shore Kama`aina of the Year.

North Shore Kama`aina of the Year honors an individual who has made a lasting, significant contribution to the North Shore community; and is presented at the Chamber’s annual Christmas Party and Auction, to be held December 1, 2011 at the Turtle Bay Resort.

Aunty Betty will be recognized for her service as a teacher; her role as founder of Halau o Hale`iwa; leadership as a kupuna and cultural advisor for Waimea Valley; and her many other community efforts.

Born in Hilo and raised on the Big Island, Aunty Betty is an alumna of the Kamehameha School for Girls (1945), going on to earn her B.S. in Education at Muskingum College, Ohio and continuing her education at Long Beach State University (California) before returning to Hawaii and settling on the North Shore.

Aunty Betty has served as a teacher and mentor at institutions throughout O`ahu, including Kamehameha Schools; Pearl Harbor Elementary School; and Hale`iwa Elementary School, where she founded Halau o Hale`iwa.



Beyond her educational service and achievements, Aunty Betty is one of the North Shore’s most respected kupuna, earned through decades of professional experiences and community involvement, including the development of a community kupuna program for the Office of Hawaiian Affairs (OHA); advocating native Hawaiian health and wellness through Papa Ola Lokahi; and serving as cultural advisor for the re-dedication of Waimea Valley.

A Waialua resident for over five decades, Aunty Betty is deeply embedded with the community and culture of the North Shore, including Haleiwa Arts Festival (Culture Chair); North Shore Surfing Museum (Board Member) and kapuna supportive role for the Waialua Court House, Kaiaka Beach Park, and many other North Shore community initiatives.

In addition to 2011 North Shore Kama`aina of the Year, Aunty Betty has received numerous honors and recognitions, including OHA’s Kupuna Award; the Association of Hawaiian Civic Club’s Kukui Lama Ku Award; National Society of Arts and Letters Hawaii Chapter Honoree; and Native Hawaiian Educator of the Year (2003).



Kahuku Cadets score high at recent inspection

Story and Photos by Cadet SSG Lindy Soukhaseum

On 28 October, 2011, Kahuku High School Army JROTC Red Raider Battalion had its formal inspection by representatives from United States Army Cadet Command, from 8th Brigade, Fort Lewis, Washington. The inspection consisted of a thorough examination of 18 specific areas to include a staff briefing, in ranks inspection, curriculum review, drill team performance, color guard performance, cadet accountability, administrative/personnel actions, operations and training standards, logistical requirements to include supply accountability, public affairs requirements, communications actions. Overall, the battalion achieved a score of 98.7 percent 992.69 points out of 1000.

**HALE'UWA
CHRISTMAS
PARADE!**

*Friday
December 9, 2011*

*Sponsored by
North Shore
Chamber of Commerce*

*To participate contact
the Chamber at
637-4558*

HOLOHOLO MOBILE SCREEN SERVICE

- *new window installation
- *new screens/re-screens
- *pet proof screens
- *jalousie repairs
- *porch enclosers
- *sliding/swinging screen doors
- *pet grills & doors
- *solar screens
- *screen door roller repair

FREE ESTIMATES
808-783-8764
www.Oahuscreens.com

Surf INTO YOGA
with Rochelle Ballard

YOGA MASSAGE LESSONS
Private Surf & SUP with
Rochelle Ballard and Megan Abubo

808-638-8137 surfintoyoga.com

Waimea Valley's Makahiki Season opens on November 19

The Makahiki season will commence on Saturday the 19th of November and run through mid February 2012.

Opening Event

Opening protocol: 9:45 am

Event hours: 9:45 am – 2:30 pm

Hawaiian Games: demonstrations at 10:30, 11:30, 12:30 & 1:30

We will be featuring a series of Hawaiian game demonstrations at our Hawaiian games site that guests of all ages will be able to play.

We also plan on featuring food and craft vendors, keiki activities, and Hawaiian Crafts.

Throughout this Makahiki season, a variety of programs will be held in historic Waimea Valley.

Waimea Valley is located at:

59-864 Kamehameha Hwy., Haleiwa, HI 96712

Phone: (808) 638-7766

www.waimeavalley.net

Hours of operation: 9:00am to 5:00pm

7 days a week

SURFERS CHURCH

FOOD • FELLOWSHIP • THE WORD

SATURDAY NIGHT

6:30PM DINNER 7:30PM WORSHIP



55 S KAMEHAMEHA HWY | WAHIAWA | HAWAII 96786

50¢ OFF FIRST BEVERAGE WITH FLYER

SURFERS COFFEE BAR
• WAHIAWA HAWAII •

"MORE THAN A CUP OF COFFEE"

63 Kamehameha Hwy • Wahiawa, HI • 96786

Hours of Operation
6am-10am
Monday-Friday
&
6pm-10pm
Monday-Saturday

SURFERS COFFEE BAR IS A NON-PROFIT
NEIGHBORHOOD COFFEE SHOP LOCATED IN
WAHIAWA FEATURING FAIR TRADE COFFEE AND
TEA, ART, LIVE MUSIC, AND COMMUNITY EVENTS.



splurge!

BE YOUR OWN SANTA

HAPPY HOLIDAYS

GUAVA SHOP

HALEIWA TOWN CENTER

637-9760 | OPEN 10-6 EVERYDAY



Council Chair
Ernie Martin
Serving You in District 2

If you applied for a building permit since last April, you may be one of the many Oahu residents caught by surprise by Board of Water Supply rules. If your home was too far from the nearest fire hydrant or the water flow from that hydrant was too low, you would have been one of those homeowners who were denied a building permit. Under certain conditions the BWS decided to allow projects to proceed if the homeowner included the installation of a sprinkler system in their plans. Many homeowners complained that the cost of installing a sprinkler system was prohibitive, adding \$10,000 to \$15,000 to the price of remodeling and possibly even higher costs for rebuilding. I first learned of the situation last summer after receiving complaints from residents in our district from Wahiawa to the Windward side. At a meeting with Board of Water Supply officials, I was informed that the backlog of permit applications and resulting complaints began in April when the decision was made to enforce a rule that had gone unimplemented since 1977. Concern over Oahu's

increasing density was responsible for the decision to enforce the rule already on the books. The rule set a maximum distance of 175 feet from the nearest fire hydrant for any new construction or upgrade on a single-family home. If a hydrant met the distance requirement, it also needed to have a minimum flow rate of 1,000 gallons per minute before a permit would be granted. It promptly became evident that enforcement of the 34-year-old rule was going to be controversial and not without opposition. At our meeting, BWS officials were receptive to a suggested review of the conditions and possible modification of the rules. They subsequently held a series of meetings with the Honolulu Fire Department and six months after the rule went into effect, a decision was made to increase the allowable distance from a hydrant to 350 feet from the previous 175 feet. The modified distance requirements are based on current firefighting technology, including the length of the hoses carried by our fire trucks. This modification will clear most of the building permit logjam. Unfortunately, there are still applicants who do not meet the new distance requirements or are located near hydrants with a flow rate less than 1000 gallons per minute, a section the of the 1977 rules that is still being enforced. This whole discussion has brought other issues to light that now need to be addressed. I have heard strong protests against the rules from those who feel that if the Fire Department considers homes to be adequately protected from fire within 350 feet of a hydrant with a 1,000-gallon-per-minute flow rate, then it is the City's responsibility to provide that basic level of fire protection to all homes. Just how many homes on Oahu are not within this new safety zone is unclear. Also as yet undetermined is the percentage of substandard hydrant capability and the cost to the city to bring all fire hydrants up to the 1000 gallons per minute flow. I will be working with Councilmember Tulsi Gabbard, Chair of the Committee on Public Safety, to bring this issue to the attention of all members of the Council in a public forum. It is an island wide issue that needs to be addressed expeditiously and is of particular concern in a rural district like our North Shore community.



Free Family Movie Night
at Waialua Community
Association



Cars 2

Fun for the whole family!
Friday, November 18 at 7 p.m.
FREE ADMISSION

Drinks & Popcorn for sale



For more information, call 637-4606
www.WaialuaCommunityAssociation.org

wanna learn?
NORTH
SHORE
JU-JITSU CLUB
try it out free!
men-women-kids
NorthShoreBJJ@GMail.com



Dear Editor:

Council Chair Martin's comments on November 2 predict mass transit from Kapolei to Ala Moana, and new, designed neighborhoods in that corridor, which means new people from the mainland. He says we should get free of fossil fuels. But, could he imagine 3 million people on Oahu in 50 years? Honolulu/Kapolei a metropolis like Shanghai or Hong Kong? (Manhattan is a dependent island smaller than Oahu, but bridged and tunneled to the mainland.) Are we going about this backwards by looking at permits for urban development of AG 2 land in Lai'e, Turtle Bay, Waianae and possibly Hale'iwa, BEFORE we secure energy and agriculture and open parks? Of course. Headlong irresponsibility.

All new and existing residential, condo and commercial construction should by law have photo voltaic and hot water panels installed. Existing buildings should be pushed to install solar. Steep land should be solar farms. Government should invest as well as the private sector. Electric cars should be mandated and phased in once solar energy exists.

Oahu, a world model. Next time on H1 by the airport, look at the acres and acres of empty roofs that could be leased by HECO with energy swap, for solar photo voltaic to energize the mass transit at least. This would create jobs. Recall, developers breed developments, not energy and sustainable crops, or long term jobs. Does City Council have the cart before the horse?

Paul Nelson, Waialua

What's Up Waialua- Community Connections Want to Exchange a Light Bulb?

The seventh graders in a joint project will be focusing on sustainability and environmental concerns and will be conducting a CFL light bulb exchange at the high school. For each lightbulb exchange, the class receives forty cents. If you are interested in exchanging your old bulbs for CFL contact the teachers involved at 637-8200.

Waialua High School's Thanksgiving Imu

The Class of 2012 wants to cook your Thanksgiving feast. For a \$20 donation we will kalua a large roasting pan for you. The possibilities are endless; you can kalua your turkey, ham, pork, turkey tails, or even laulau. For more information call Waialua High and Intermediate 637-8200.

art show
 friday november 18 * 6pm - 10pm
 featuring:
 SEAN CASTRO + EUKAREZT + MARIO QUEZADA + REMI MEAD
 at:
SURFING THE NATIONS
 55 So. Kamehameha Hwy, Wahiawa
 PRESENTING ULU PONO KIDS

**AVON FUNDRAISER FOR
Once A Month Church**
 80% of profit donated to help our hungry & homeless (now through November 30)
www.youravon.com/teixeira
 click "online events" button
 At checkout use promo code OAMC1
 For more info:
Chanel_teixeira@yahoo.com
MAHALO!

**Location Available.
Be your own boss.**



www.theupsstore.com
1-877-623-7253

The UPS Store



Surf Newz by Ace Cool

Howzit North Shore! We had a good run of start up swells up in "the country" starting in mid-September and rolling right through October and into November of 2011. Places like Laniakea, Log Cabins, Ehukai and Sunset have had some good early North Shore winter surf season swells so far this year! These swells are mostly from the north and north-northeast but they can really pack some juicy punch! Then came a few bigger swells from the north-northwest, and the winter really started to kick in. It's so good to have surf every day and to be able to live your life around it. It's nice out there in the water. Watching the sun go down until it sets on the blue horizon is awesome. The sunset turns into an explosion of pastel and neon shades of orange, purple, pink, red, yellow, green and blue! The south shore of Oahu showed some real out of season surf, on into the fall of 2011. It looked like another one of those south shore "Indian Summers" in town. There were several "High Surf Advisory" sized swells on the South Shore in late August, September and even on into mid-October.

For the women, its all squared away. Carissa Moore of Hawaii is the women's world champion! "With the completion of the final stop on the 2011 ASP women's star series, the "ASP 6-Star Billabong Girls Azores Islands Pro", the elite ASP top 17 have officially been confirmed for 2012. The ASP top 17 is comprised of the top 10 finishers on the ASP women's world tour from 2011, the top 6 from the Women's World (WQS) Rankings and one ASP wildcard to round out the roster." (ASP quote) The pro women's last WCT/ASP event completed counting towards the 2011 ASP rankings was #7, the "NIKE U.S. OPEN of SURFING" in Huntington Beach, California from August 1-6 of 2011. It was won by Sally Fitzgibbons of Australia, making her #2 on the rat-

ings for 2011 behind Carissa Moore of Hawaii at #1! Stephanie Gilmore and Tyler Wright both of Australia are #3 and #4 respectively. Silvana Lima of Brazil is #5. Hawaii's Coco Ho is #6!

The recent epic battle brewing between Kelly Slater of the USA and Owen Wright of Australia has reached 'across the board' and around the world. Owen Wright won the unprecedented \$1,000,000 "Quiksilver Pro New York" held in Long Island, N.Y. between September 4-9. Then Slater won the \$455,000 "Hurley Pro" held at Trestles in San Clemente, California between September 18-21. Then, October 2nd, Mick Fanning took the "Quiksilver Pro France" (Mick now takes the "Quiksilver Pro France" 2 years in a row consecutively). The "Rip Curl Pro" in Peniche, Portugal from October 15-24 was won by Brazilian Adriano De Souza with Slater in 2nd Place, and now the "Rip Curl Search: Somewhere in San Francisco" brought it to 'neck and neck'! The ASP/WCT pro surf tour for 2011 wraps up at the "Billabong Pipe Masters" on the North Shore of Oahu in Hawaii from December 8-20. It could be a Showdown! The "VANS Triple Crown of Surfing 2011" kicks off right here on the North Shore in mid-November!

Aloha...Ace Cool!



Kelly Slater (USA), 39, has officially claimed a historic 11th ASP World Title today, clinching the year-long pursuit with his advancement in to the Quarterfinals of the Rip Curl Pro Search San Francisco.

In tricky three-to-five foot (1.5 metre) waves, Slater got the best of young Brazilians Miguel Pupo (BRA), 19, and Gabriel Medina (BRA), 17, in his non-elimination Round 4 heat to advance directly through to the Quarterfinals and secure an unprecedented 11th ASP World Title.

North Shore Food Bank

You can help feed the North Shore's homeless & hungry by donating non-perishable canned foods to the North Shore Food Bank located in the North Shore News Office above the Hale'iwa Post Office.

637-3138

Prefer to contribute financially?

Check can be made out to:

Once A Month Church
P.O. Box 117, Hale'iwa, HI 96712

TOP 5 MOST NEEDED ITEMS

- Financial Contributions
- Canned meats or tuna
- Canned meats & soups
- Canned vegetables & fruits
- Canned beans

No donation is too small.

501c3 non-profit

DRAFTPLANS HAWAII

- Over 10,000 floor plans & blueprints available for purchase online. Gather ideas for your own design.
- Drafting** Service available for new home designs, additions, renovations, decks, fence, rock walls, etc.
- Free** property specifications & title search info.

www.draftplans.com

Call for free estimates:
265-0035



BULLETIN BOARD



Featuring the largest selection of certified organic produce on the North Shore.
 No panic...ours is organic.
 Open 7 days.
 Mon.-Sat. 9am-6pm.
 Sun. 9am-5pm

66-445 Kam. Hwy
 Haleiwa, Hawaii 96712
 Next to the Post Office
 808-637-6729 • 808-637-1922 fax



Robert Oakley Owner
 ASE Certified Master Mechanic Waialua, Hawaii
 Computer & Electrical Specialist (808) 330-0459

N-C PLUMBING & SUPPLY

Cont. Lic. No. C-8913



- RESIDENTIAL & COMMERCIAL SALES & SERVICE
- CONTRACTING & DESIGN • HOME PLUMBING SERVICE
- PLUMBING FIXTURES, HEATERS • FREE ESTIMATES

Nestor P. Calilao (Owner) Bus: 637-8662
 P.O. Box 769 Res: 638-5157
 Waialua, HI 96791 Cellular: 372-8718

email: nncplumbing@hawaii.rr.com

BOW WOW BUNGALOWS

Licensed Boarding Kennel
 North Shore, Oahu

Reasonable Rates • Ph. 637-2562

These Dogs Have Fun!

Statewide Hotline for Litter

1-888-592-2522

Callers need to provide:

1. License plate number
2. Make and model of vehicle
3. Date and time and location
4. What was thrown/blown

Paradise Lua

Parties • Special Events
 Anykine Private or
 Public Functions



"Portable Sanitation at its finest"

690-8116

Munden Design & Build

Lic.#BC19632

Design • Plans • Permits • Construction
 Additions & New Residences

808 391-8616

Providing quality work since 1978



DR. PORTER TURNBULL

Chiropractic Orthopedist

(808) 638-8740

Appointments available Mon.-Sat.
 (evenings by appointment)

- Industrial accidents & auto injuries
- Sports injuries • Spinal care
- Safe, Effective, and Gentle



"HONEST DEALS ON QUALITY CARS & TRUCKS"

Established 1985

LINNE HOLMBERG

Owner

Honolulu: 834-0808

Fax: 834-6602

530 Paiea St.
 Honolulu, HI 96819

Lonestarmotorsportsllc.com

Cellular: 222-4272

LIC. #AC 18275



GENERAL ENGINEERING CONTRACTOR

Full Service Sitework

Contractor

Septic Systems & Tanks

25 yr. exp.

Michael Cowper 638-7200

cowperhawaii.com

Our final 2011 service at Hale'iwa Beach Park Sunday, November 27

Smiles from our
October 30 service.
(Trish Coder photos)

We're the church that gives to you



SUNDAY SCHEDULE

8 a.m.-9:30 a.m.

Register for FREE give-aways

9 a.m.-10 a.m.

Sunday School for keiki 4-12 yrs.

9:30 a.m.-Pre-service give-aways

10 a.m.-12 noon Joyful Church Service
(10-minute sermon)

12 noon Celebration Feast/Food for all!

2012 SCHEDULE

January 29

February 26

March 25

April 29

May 20

June 24

July 29

August 26

September 30

October 28

November 25

From anywhere on O'ahu take the Circle Island city bus to Hale'iwa Beach Park

First 500 to register will receive a free cash offering!

No church offering collected, instead, we give our money to you!

First 300 to register get a free bag of groceries.

10 FREE super-loaded grocery cart give-away.

FREE lunch for everyone at 12 noon!

Includes Uncle David Anana's local beef stew & healthy greens by Ken the Salad King

• Bring a beachmat, lawn chair or blanket, and be sure to bring your appetite!

SURFERS, SAINTS & SINNERS ARE WELCOME!

OAMC is a community outreach made possible by many generous supporters and volunteers. If you would like to support or volunteer for the OAMC call 342-3969.

The OAMC is scheduled to meet on the last Sunday of every month (except May & December).

"There will always be poor people in the land. Therefore I command you to be open handed toward your brother and toward the poor and needy in your land." (Deuteronomy 15:11)

BULLETIN BOARD

Pilates with Linda Yadao

Private, Semi-Private and
Mat Classes
Over 30 Years Experience

Call: 637.1230
linda@ynrmarketing.com

HAIR SPECIAL Full Highlight and Cut \$100.00

GINA WALKER

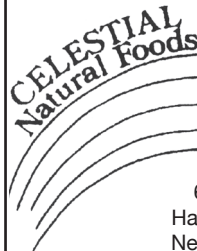
Hairdresser to the stars
from Malibu, CA
Senior Stylist & Color Master
Now at our new location
North Shore Salon & Spa
in Haleiwa Town 808-375-3984

When it's time to tie the knot...

www.hawaiiweddingminister.com

informal beach weddings a specialty

(808) 342-3969



Specializing in vegetarian foods, vegan foods, whole foods, organic food. Wheat free, dairy free, raw foods, gluten free. A complete selection of natural foods for 37 years. Make earth day, everyday.

Open 7 days.
Mon.-Sat. 9am-6pm.
Sun. 9am-5pm

66-445 Kam. Hwy
Haleiwa, Hawaii 96712
Next to the Post Office
808-637-6729 • 808-637-1922 fax

"THE BULLETIN BOARD THAT IS IN EVERYONE'S HOME"

GOT BOOKS?

Fall Cleaning

While you are doing your fall cleaning why not donate your new and gently used books to Once A Month Church. Your donation of books (fiction & non-fiction), magazines (National Geographic only), and monetary donations will support our free lending library for homeless and low-income families.

Bring your donation to the North Shore News Office located above the Haleiwa Post Office, 2nd Floor, Suite 210.

637-3138

Oceanside Chapel Service at Turtle Bay Resort



Every Sunday at 9 a.m. in the beautiful oceanside wedding pavilion.

Hosted by Pastor Ron Valenciana

- Non-denominational 45 min. service
- Traditional & Contemporary music
 - 15 minute sermon
- Free gift to all first-time visitors
- All are welcome! Free validated parking

For more information call Pastor Ron at 342-3969.

*When church is pau, enjoy dining at the Palm Terrace, Hang Ten Pool Bar, or Lei Leis.





The North Shore News is published every other Wednesday and mailed free of charge to all North Shore homes and businesses. Extra copies may be obtained at our office.

PRESS RELEASE POLICY: Submit press releases in person or by fax, mail or email to Editor, North Shore News, P.O. Box 1117, Haleiwa, HI 96712. Please type your releases and keep them shorter than 200 words unless they are of an unusual news interest. Releases should be viable news stories and are published on a **space available basis only**, with priority given to those received in our office first. You may attach photos. We are not responsible for the return of any photos. All materials are submitted at owner's risk. We reserve the right to edit and/or refuse all submissions including advertising.

EDITORIAL POLICY: We welcome articles and letters from our readers. Letters to the Editor are published on a space available basis only and preference is given to shortness of length, and quality of content. We prefer to run not more than one letter, per person, per 6 month period. Letters subject to edit.

Views expressed by our contributing writers and advertisers do not necessarily reflect the view of the management and staff of the North Shore News. All rights reserved. Reproduction in whole or part without permission is prohibited. © 2011.

PUBLISHER/EDITOR
RON VALENCIANA

TYPOGRAPHY
DOWNTOWN GENERAL STORE
BOOKKEEPING & CLASSIFIEDS
LINDA SEYLER

CONTRIBUTING WRITERS
RON VALENCIANA,
BUTCH HELEMANO,
NATY HOPEWELL

For Advertising Rates,
call
637-3138

CLASSIFIEDS

♥♥Need a minister for a North Shore wedding? Hundreds of knots tied for happy couples on Oahu. Simple beach-side ceremonies to formal church or chapel services. I'll make your special day an extraordinary memory. Call & leave clear message with phone number & possible date, time & place. 342-3969. Also: Vow renewals, house blessings, baby luaus.

PAUMALU ELECTRIC
David C. Hancock
638-9054 / Lic#C18074

SHORE ELECTRICAL SERVICE
New Const-Remodels
638-0049 / Lic#C20777

FREE Pregnancy Test
Above Haleiwa Post Office
Call for hours 779-4685

LGR Construction
Remodel • Repair • Design
Drafting • Painting • Small Jobs
Affordable rates. 343-4453/Lic#26759

Dog/Cat Nail Trimming
at your home only \$15.00
Call Julie 637-5395

Aloha Computer
PC Repair/Virus Removal
Fax/Copy/Internet Access
372-2667 or 237-4558

Lawn Care For You
Mowing, Trimming, Light Hedging
Call Thomas 637-5839

Ross McGerty BC24080
349-6359 • 637-9539

From Waiialua to Sunset
Make Me the First Call
for Home or Rental Repairs
or Renovations

EXPERT ELECTRICIAN
Fans, emergency services, etc.
Jim Richards 371-9369

PARADISE PLUMBING INC.
New Const • Repairs • Remodels
808-368-1473 / Lic. 29856

Holoholo Mobile Screens
New Screens • New Frames
Screen Repairs • Pet Proof Screens
Sliding Screen Doors • Affordable Rates
Call Today 783-8764

BEACH PLUMBING & ROOTER
Over 30 years experience
Call Larry 637-6400

Ohana Clean Up
Carpet Upholstery Cleaning
Pressure Washing
375-1814 • 979-5579

Handyman Services
Remodeling, Carpentry, Floors,
Concrete, all parts of Construction
Call Bob "The nicest guy in the
business" Ph. 282-2812

SULLIVAN PAINTING
Residential • Commercial • Int/Ext
Tommy 371-0998 Lic.#C31055

Seamstress
Rita Bell
497-3666

NO KA OI
Home & Land Maintenance
Window washing, power washing,
painting & staining, fix screens &
more. Free estimates. 808 446-2282

Mel's Cleaning Service
Experienced, reliable, efficient, all
jobs excepted. Vacation rentals,
business and residential,
References available upon
request.
330-7945

"CHANGE YOUR WATER
CHANGE YOUR LIFE"
Ionized Alkaline "Kangen" water.
For info call Jim Richards 371-9369

Pam's Poles
Pole Dancing lessons Mon & Wed
6pm First 6 females 638-7932

J & L SERVICES HALEIWA
Most reliable yard care
and gardening experts
Reasonable rates and the f
riendliest service
Call now! 673-1384 Larry

Bikram Yoga
*Stretch, strengthen &
stimulate mind & body.*
All ages and levels.
Please call for class schedule
637-5700

North Shore Pumping
Cesspool & Septic Pumping
Complete Plumbing
Services, new & repairs
Lic. & insured #25567
638-0900 • 291-5089

N.S. Property Maintenance
Power wash, painting int/ext,
deck repairs, extensions,
fences, gates,
carpentry & remodels.
Maintenance, lawn & yard.
Chris 381-5213/638-0659

B.E. CONSTRUCTION
Dumptruck & Backhoe
Services
Equipment, dirt, rock,
green waste hauling
in and out
DEMOLITIONS
BRUCE ESCHE 783-9510

LEARN TO SWIM
AT THE
HAWAII SWIM
SCHOOL
ON THE NORTH SHORE
Developing swimmers since 1982
Haleiwa Rd. at Smiley Place
637-4863

SUBSCRIPTION RATES

If you live outside the North Shore area on Oahu, neighbor islands, or the mainland, you can subscribe to the North Shore News. Our annual subscription rate is \$27 for 25 issues delivered by standard bulk mail (2-3 weeks), or \$48 for 25 issues delivered by first class postage (3-5 days). Call our office for payment information at (808) 637-3138.

HOW TO CONTACT THE NORTH SHORE NEWS

Letters to the Editor, and other items submitted for publication consideration may be sent to us via:

MAIL: P.O. Box 1117, Haleiwa, HI 96712

E-MAIL: NShoreNews@aol.com

FAX: (808) 637-8862

PHONE: (808) 637-3138

CLASSIFIED ADS

hawaiiweddingminister.com
342-3969
 31 years experience

Offshore Plumbing, LLC
 Commercial • Residential
 • Septic • Plumbing Design
 Mike Duenas, owner
 Lic #C28113
 630-1407
 Fax: 637-7870 • Office: 371-3451
 offshoreplumbing@yahoo.com

BOBBY'S BODIES
 Tuesday evenings at 5:00 p.m.
 • Body Toning
 Friday mornings at 9:00 a.m.
 • Cardio Pump/Fat Burner
 For more info: call Bobby, owner of
 BOBBY'S BODIES at 637-4150

Lisa Carley Skin Care
 637-9400
 lisacarley.com
 67-292 Goodale Ave. #104
 Waiialua Shopping Center

Your Clean Home
 Specializing in residential/vacation
 homes & property management.
 Experienced/reliable
 and affordable. Green cleaning
 safe for your family and
 our planet!!!
 808 638-0262 or 779-6604

THE LAWN RANGER
 Lawn Maintenance
 no yard too hard
 no lawn too far gone
 We mow betta
 258-6439 Dan Fatchett



Marianne Abrigo, Properties

Specializing in -
**North Shore
 Real Estate**

Ask for our list of avail-
 able properties and/or a
 free market analysis.

Marianne M. Abrigo
 "Realtor since 1974"

Office 637-3511
Fax 637-0777
Email mabrigo222@aol.com

**Automotive Services
 and Restoration**
 • Auto Body & Paint
 • Detail & Shampoo
 • Upholstery
 Rick Estrada - 216-9419

HARVEY'S REPAIR, LLC
 24 hrs Towing Service
*Specializing in opening
 locked car doors*
 Call any time 478-0333

GERMAN CAR SERVICE
 Professional-Qualified
 Technician
 Call Gary
 637-6800

**ANGELS
 PLUMBING**
 Repairs
 Remodeling
 Renovation
638-7878
 Lic. #C12004



SHIATSU • LOMI
 Aromatherapy
 Milica Barjaktarovic
 Lic # MAT8348
 351-0848
 HumanRemodeling.com

BEAR Engineering
 • Home & Commercial Bldg. Inspection
 • Septic System Design & Consultation
 Nathan M. Toothman, P.E.
 nathant@beareng.com
 (808) 754-3579
 www.BearEng.com

**North Shore
 PC/Laptop Repair**
 Free Diagnostic
 Affordable At-Home Service
 Call Mike 480-254-7473

FOR SALE

Got a broken topload
 washer or dryer?
 Don't trash it call us at
 Washcycle Hawaii
 778-2450

HELP WANTED

BUSSERS/SERVERS
 Pizza Bob's in Haleiwa is looking
 for BUSSERS/SERVERS. Experi-
 ence preferred. Apply in person
 at 66-145 Kam. Hwy.

COOKS/KITCHEN HELP
 Pizza Bob's in Haleiwa is looking
 for kitchen personnel. Experi-
 ence preferred, but will consider
 training the right people. Apply
 in person at 66-145 Kam. Hwy.

Administrative Assistant
 P/T - Must be intelligent with
 good computer skills & access
 to high speed internet. Work
 as independent contractor at
 North Shore office and from
 home. Flexible hours.
 Fax resume to 638-7643.

Looking for prep cook for
 North Shore area. Some kind of
 experience preferably but not
 necessary. For more info call
 372-8091

Farm seeking responsible
 hard working individuals.
 Work included but not
 limited to harvest, prune,
 clean & prep w/ flexible
 hours. Leave a message.
Call 707-200-1375

**Retail Sales
 Surf & Sea**
 Hawaii's Ocean Sports Headquarters
 is always looking for hard working,
 energetic people to become a part
 of our sales team. Good pay, bonus,
 benefits. Ocean sports experience
 and/or bilingual a plus. Apply in
 person daily 9am-7pm
 62-595 Kam. Hwy., Haleiwa

FOR RENT

Gmd Fl. Professional/retail
 Space 466sq'/\$1,382.75/month
 Xcel Bldg. Haleiwa 779-7779

**Save Sea Turtles
 Use Reusable Bags**
www.b-e-a-c-h.org

MISCELLANEOUS

NS Seventh Day Adventists
 Saturdays 9:15-12:15
 67-174 Farrington Hwy.
 (WUCC, next to WHS)
 Info: 638-8209

Craft Fair & Farmers Market
 @ Historical Waiialua Sugar Mill
 Saturday, December 3, 2011
 8:30am-4pm
 Wanted craft vendors \$30.00
 Call Edith 351-5114/637-8580
 or Jill 225-6760

**A CALL TO ASPIRING
 WRITERS!**

Do you want to share the love
 of writing, exchange ideas, ex-
 pand one's knowledge or need
 inspiration? The Writer's Discus-
 sion Group meets regularly the
 second Saturday of each month,
 11:00 a.m. at the Waiialua
 Public Library. Sponsored by the
 Friends of Waiialua Public Library.
 For information call 637-8286.

Do you need a sitter?
 For info call 469-7788

**Program Events at
 Waiialua Public Library**

Writers Group meets
 the 2nd Saturday at 11:00 a.m.
 Book Sale is the 3rd Saturday
 at 9:00 a.m.
 Book Discussion meets
 the 4th Thursday at 9:30
 Basic Internet Instruction,
 Fridays at 10:00 a.m.
 Children's Story-time & Craft
 Activity, Saturdays at 10:00 a.m.
 Toddler Time, Parent Directed
 (Educational toys available),
 Fridays at 10:00 a.m.
*For more information, please call the
 library at 637-8286. Sponsored by the
 Friends of Waiialua Library. Closed on
 State approved Holidays.*

Ho'ola Like
 "Healers Working Together"
 Waikiki Health Center's North Shore Clinic
 Majority of Insurance Plans Accepted
 No Insurance • Sliding Fee Available
 Open Tuesdays and Thursdays
 8:30 am to 3:30 pm
 Walk-ins are Welcome
 Emerson Hall, Queen Liliuokalani Church
 66-090 Kamehameha Highway, Haleiwa
 Call 284-5212 for an appointment.

CLASSIFIED ADS

OFF da ISLAND

Are you leaving Oahu on vacation or business? Do you live on a neighbor island, the mainland or foreign country and subscribe to the North Shore News? Try send us a photo of someone in front of a sign or landmark holding a copy of the NSN. Email your photo along with the person or persons' name, community of residence, telephone number and photo location to: NShoreNews@aol.com. Or, mail to OFF da ISLAND Photo, North Shore News, P.O. Box 1117, Hale'iwa, HI 96712. We cannot return photos so please send us a copy. Photos received become the property of NSN. Preference and priority will be given to emailed photos.

Please Report Stranded Sea Turtles

Call 983-5730 • Mon.-Fri., 7am-4pm
288-5685 pager wkends, holidays
587-0077 and after hours
Suspected Law Violations
541-2727 or 800-853-1964
NOAA Fisheries DLNR-DOCARE

REUNIONS

The NSN is happy to publish your school or family reunion Free of charge.
Email your announcement to NShoreNews@aol.com.

Waialua Farmers Co-op Market

Fresh Waialua-grown produce plants & more at the Waialua Sugar Mill

Sat. 8:30 a.m. - 2 p.m.
Wed. 4:30 p.m. - 7 p.m.

Outreach Services

Persons with Disability
Advocacy Benefits Housing
HCIL 54-113 Kawaipuna St.
Hauula, HI 96717
Ph. 293-9775 or 293-9777

Statewide Hotline for Litter

1-888-592-2522

Callers need to provide:

1. License plate number
2. Make and model of vehicle
3. Date and time and location
4. What was thrown/blown



Business Services Center

Fast & convenient fax, copy, scan, computer/internet, laminate, etc.
Across from Haleiwa post office.
North Shore Chamber of Commerce
637-4558 or 342-8557

North Shore Farmers Markets

Haleiwa: 9 a.m. to 1 p.m. Sundays, at traffic signal on the old Kamehameha Hwy at the bypass road.

Waialua Sugar Mill: 8:30 a.m. to noon Saturdays & Wednesdays 4:40 p.m. to 7:00 p.m.

North Shore Country Market: 8 a.m. to 2 p.m. Saturdays, Sunset Beach Elementary School, 59-360 Kamehameha Hwy.

Laie: 11 a.m. to 2 p.m. June 24, July 8 and 23, Brigham-Young University-Hawaii, 55-220 Kulanui St.

The Lords House Pentecostal Church

Wednesday Bible School 7pm
Sundays 10am-6pm
136 Wilikina Drive
Wahiawa, HI 96786
Info: 808-621-5989

Don't throw away that old BIKE!

Donate it to Yikes Bikes

A non-profit program at Waialua High & Intermediate School

637-8200
M-F • 8 a.m.-3 p.m.

NS Seniors Yard Sale

Last Saturday of the month. Next to Malama Market.

Lost Small Tortoise
Waialua Beach Rd/
Puuiiki Park area.
Please call 256-9224



It's been cold lately!
Perhaps you have an extra blanket or two, used or new to donate to our homeless neighbors.
Drop off blankets at the North Shore News office
A Warm Mahalo
637-3138

E Kooka Kakoue Malama I Kawaiola

www.cleanwaterhonolulu.com
Environmental Concern Line
527-5091
City & County of Honolulu

Cub Scout troop now in Waialua open to boys in grades 1-5. Meetings are 3 Wednesdays per month at 6:30 at the Waialua United Church of Christ. Contact Autumn Winsett with the Aloha Council for more information at 595-6366x232.

Emergency Preparedness & Self-Reliance Fair:

A community Emergency Preparedness & Self-Reliance Fair will be held on Saturday, Nov 19, from 9:00 am - 12:00 pm at Hau'ula Elementary School. 20+ informational booths hosted by local organizations such as emergency response teams, the Red Cross, and other community service groups will be on hand to answer your questions about preparing for disasters. Free demonstrations, products, and information.
Door prizes every hour.
Sponsored by Hau'ula & Laie Community Associations and LDS Laie Hawaii Stake.

BEACH CLEAN UP

Chun's Reef - 10 a.m.
637-2211

Last Saturday of every month
adoptabeachhawaii.org

Next Issue - Nov. 30, 2011
Deadline Date-Nov. 17, 2011

Keep it Country
To report **ILLEGAL VACATION RENTALS**
call 768-8159 or 768-8118
You will remain anonymous
Illegal Vacation Rentals are ruining the North Shore
www.savenorthshoreneighborhoods.com

IGREJA EVAN. BRASILEIRA

Domingos 10:00 am
Quartas 7:30 pm
Sextas-Culto de Oraçao 7:30 pm

Voce e o nosso convidado especial

Behind Hale'iwa Post Office
637-5566
Pastor Luiz • 638-2212

Recycle Plastic Caps & Lids

and help save seabirds

Recycle caps & lids are being accepted at:
Goodwill Industries of Hawaii
Wahiawa
823 California Ave.
Monday-Sunday
9 a.m. - 5 p.m.

For information:
www.b-e-a-c-h.org/recycling
Ph: (808) 393-2168

Kahuku Library Events

Kahuku Public & School Library will offer "Tuesday Night at the Library" events and other programs in November 2011. All events and programs will be conducted in the Conference Room and are suitable for all ages, unless otherwise noted. Admission is free:

November 22, 6:30 p.m. - "Endangered Babies: Monk Seals and their Pups." This program will be presented by Dana Jones of the Hawaiian Monk Seal Response Team Oahu, Dera Look of the National Oceanic Atmospheric Administration, and Kehaulani Watson, who has studied the monk seal in Hawaiian literature. Learn how the ancient Hawaiians viewed and valued these animals, and how we view monk seals today.

After School Club - meets Wednesdays at 1 p.m. when school is in session.

Keiki Story Time - meets Thursdays at 10 a.m.

Kahuku Public & School Library is located on the Kahuku High and Intermediate School campus, at 56-490 Kamehameha Highway. For more information, please call the Library at 293-8935.

Happy Thanksgiving!

MALAMA Market

MALAMA MARKET HALEIWA:
OPEN DAILY 7 AM-9 PM
808.637.4520

MALAMA MARKET MAKAKILO:
OPEN DAILY 6 AM-10 PM
808.672.9955

Valid Dates:
11/16/11-11/24/11

Fuji Apple **\$1.19**
PER LB.



Hinode Calrose Rice **\$10.99**
White or Brown,
20 lbs.



Meadow Gold Eggnog **\$2.89**
Quart



Zacky Farms (Tender Gold) Turkey **\$6.99**
EACH

Grade A, Frozen, Up to 16 lbs., Limit 2 Per Day, While Supplies Last



Häagen-Dazs Ice Cream **2/\$5.50**
Selected Varieties, 14 oz.



Pepsi **4/\$14**
Selected Varieties, 12/12 oz. or 6/24 oz., Must Buy 4



White Shrimp, 51/60 ct. **\$5.99**
PER LB.
Previously Frozen



Tostitos Tortilla Chips **2/\$5**
Selected Varieties, 9.75-13 oz.



Huli Huli* Chicken Whole Roaster **\$6.99**
EACH
*Used with Permission



Boar's Head Oven Gold Turkey or Virginia or Black Forest Ham **\$10.49**
PER LB.



Coca-Cola Selected Varieties, 12/12 oz. or Dasani 24/500 ml. **4/\$16**



Tostitos Brand Salsa **\$3.19**
Selected Varieties, 15.5 oz.

Nabisco Ritz Crackers or Snack Crackers **2/\$6**
Selected Varieties, 5.5-16.5 oz.

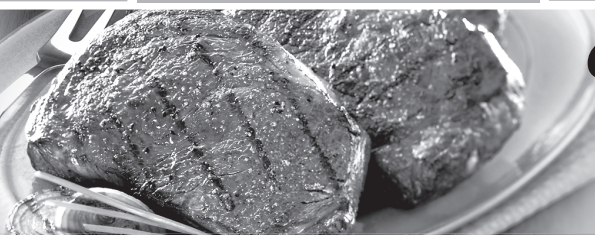


Heineken, Corona, Pacifico, Sierra Nevada, or Samuel Adams **\$13.99**
12 Pk. Bottles



THURSDAY

INCLUDES:
7-8 oz. Steak
Rice • Tossed Salad • Drink



Grilled Steak
LUNCH
\$6.99

Hawaii Beverage Fee of 1¢ per can or bottle will be added to purchase price at checkout. An Additional Hawaii Deposit fee of 5¢ will be charged for all specially marked beverage containers.

Limit five units (mix/match) per purchase, unless otherwise specified. We reserve the right to limit quantities. No sales to dealers. Prices plus applicable state tax. Hawaii EBT cards welcomed.