



Have a Safe & Happy Halloween!



Ho'olapu, the Spirits of the North Shore

By Kalewa



We have known for many generations that Kaena Point is reputed to be the "Soul's Leap"; the very place where the spirits of the recently departed would search for in the blindness of death, until they would arrive there and be able to leap into the after-world. It was said by some old Hawaiians, as they told those very few secrets of their ancestors, that some of those spirits had a hard time finding Kaena Point and would get frustrated. Sometimes those frustrated spirits, called Lapu-Puhili, would manifest themselves in ways that could be seen by the

living.

When you see those little whirlwinds, dust devils or mini-tornadoes that scamper across the upland fields, you would do well to try and stay out of their path. Those of you that have driven through them, on your way to Wahiawa, know that when they come into your car, they throw dirt in your face, soil your clothes, mess up your papers and in the worst cases, may even change your radio station. These are the Makani-wili-wili, the troubled whirlwinds of Lihue (as that area was once called). But then, the Makani-wili-wili are not really bad Lapu (ghosts), they are just confused souls.

Now then, there are much more dangerous Lapu. Long after times of war, the Koa-unihipili, the ghosts of fallen warriors, the losers of hard fought battles may long inhabit ancient battlefields. These soldier ghosts are usually heard of on the moonless nights of Kane. It has been said, by those that have seen them, that their presence is preceded by the deep base sounds of the ancient Pahu drums. The wars are long over now, and most of those spirits have found their way to Kaena Point, but it would still be wise to be wary on dark nights when you hear unearthly

pounding.

Indeed, there are many stories of the Akua that guard the heiaus of the ancient chiefs and priest. Those are the spirits of the temples that were once fed the mana of their followers in ways that are unimaginable today. It has been assumed that since the idols were destroyed by the chiefs, in the 1820s, and the Missionaries came to teach the new religions, that the spirits of the Akua are no longer powerful. Let me just remind you that the Waialua, Wahiawa and Ko'olauloa Districts were not governed by the Chiefs, but by the Kahunas and that there is a strong and very active Hawaiian Renaissance occurring now.

There are many other kinds of Lapu. Most are benign and some are even helpful. Many of us recognize our Aumakua; others call them guardian angels. Whatever faith you embrace, it may serve you well to respect the spirits that others see around you and be aware that they may be watching you as well.

The time is near for the keiki to dress in costumes that in one way or another represent their kindred spirits. We must all be careful to let no harm come to those little Ho'olapu, as they will indeed be watching over us in due time.

66-437 Kamehameha Hwy., Suite 210
Hale'iwa, HI 96712

PRE-SORTED
STANDARD
U.S. POSTAGE PAID

Honolulu, Hawaii
Permit No. 1479

PROUDLY PUBLISHED IN
Hale'iwa, Hawai'i
*The Surfing
Capital of the World!*

OPEN LETTER TO THE NORTH SHORE COMMUNITY FROM FIRST WIND

Aloha Friends and Neighbors,

As the Kawaiioa Wind farm prepares to go online, we wanted to say mahalo for your questions, your interest, and your willingness to understand the significance and purpose of this project. It's clear to us that the North Shore community is passionate about upholding the principles that make it a uniquely special place to live. We share the desire for a sustainable future that keeps the country, country.

Kawaiioa Wind was born in 2009 when Kamehameha Schools selected First Wind to build a wind farm as part of its vision for the North Shore Plan. By leasing land to First Wind, Kamehameha Schools is able to reinvest revenue into irrigation and expand farming in the Kawaiioa ahupua'a. More arable farmland means more locally grown food. Similarly, more local energy production means less money spent on importing foreign oil. Kawaiioa Wind will generate enough energy in a year to power the equivalent of 14,500 homes on O'ahu—supplying, in essence, enough electricity for the entire North Shore.

It was our goal to develop the wind farm in a way that is respectful and protective of the resources and priorities of the community, and First Wind went beyond what was required in planning this project. Public outreach for the project started in 2008 when KS introduced their master plan for the area. After completing a variety of studies on the project site, FW began public outreach in 2010, discussing the project at several North Shore Neighborhood Board meetings and with the North Shore Chamber of Commerce Board, Waimea Valley staff and 'Aha Hui O Waimea, Outdoor Circle, Friends of Waiialua Town, Office of Hawaiian Affairs, and many other community groups and residents. We also advertised public meetings and public comment periods for our federal Environmental Assessment and state Environmental Impact Statement. Input from North Shore residents helped to shape the project and to identify priority areas that we will support in the community.

One concern we wanted to address: People have asked whether we could have eliminated the visual impact of the wind turbines that are on the ridge adjacent to Waimea Valley. We looked at different ways to move the turbines so that they would not be visible from the valley and the bay. But because of the height of the turbines, removing them from this view plane would have required moving the whole project into a less windy area, greatly reducing the clean energy benefits of the project.

The wind turbines at Kawaiioa are a new addition to the North Shore, and we appreciate hearing your thoughts about them. We also plan to begin giving tours of the facility in 2013.

The North Shore is a remarkable and distinctly beautiful place where people truly appreciate how nature enriches their lives – especially the ocean, the sun, and the wind. Turning to the wind to generate clean electricity is entirely aligned with this community's values and philosophy of self-sufficiency. We hope that residents appreciate this perspective and see the "inner beauty" that the project brings to complement the natural scenery. Among the many things the North Shore has to be proud of, it is now home to the newest renewable energy project in Hawai'i that supports both local food and energy production. And First Wind is certainly proud to be part of this community.

Mahalo me ka ha'aha'a,

firstwindSM

FirstWind.com



Strengthening Community

First Wind is committed to being a contributing member of the North Shore community. By the end of 2012, Kawaiioa Wind will have employed approximately 200 people in temporary construction jobs, primarily local hires. When commercially operational next year, we expect to have about 20 long-term employees working to operate the turbines and support our environmental program. We will continue to improve habitats of endangered species, and support environmental and cultural organizations, agricultural activities and local schools. We firmly believe in our kuleana to care for the land, to nurture natural resources and to support the people of this community.



Lessening the Burden for Ratepayers

As long as we depend on oil for electricity production, ratepayers will continue to pay for the volatile and increasing cost of importing oil. This wind project provides energy that is locally produced and sold to HECO at a relatively fixed rate for 20 years.



Sustaining Agriculture

Lease revenues to Kamehameha Schools will help to pay for needed irrigation system improvements to the project area, thereby allowing for increased access to water for local farmers and the ability to expand cattle grazing in the area. Thus, this wind project is supporting both local energy and food production, ensuring that the area will remain as farmland for many years to come.



Health and Environment

Kawaiioa Wind will prevent the burning of 300,000 barrels of oil to make electricity every year. This prevents hundreds of millions of pounds of carbon dioxide and other climate change pollution from entering our atmosphere and ocean. Wind energy is clean, local, and renewable

surfer [THE BAR] [11.15.2012] 1 year @NNIVERSARY!

- THE KA'ALA BOYS
- KAPENA
- PRIZES
- DOORS OPEN AT 6PM
- NO COVER
- DRINK SPECIALS
& MORE!



surfer [THE BAR]

Located at Turtle Bay Resort. Open 7 days a week.
Visit SurferTheBar.com for special room rates
and to learn more



SPECIAL DINNER & CONCERT

Friday, November 2nd – Gateway Restaurant – \$25/person
7pm Island Feast Buffet / 8pm Concert

john cruz & Na Leo Pilimehana

Ter-Johnson Photography

Indulge in our spectacular Island Feast Buffet and enjoy the beautiful music and melodies from acclaimed artists John Cruz and Na Leo Pilimehana. For reservations, call 293-3333.

Reservations are recommended. Book early for special rates. Group bookings also available.



Buffet closes at 8pm. Subject to change without notice. Rates are for Hawaii residents with valid ID. Limited seats are available.




Are you a Snow Puffy fan?
Visit us in your "I'm a Snow Puffy Junkie" shirt and **SAVE!**

ASK FOR YOUR EXCLUSIVE "I'm a SNOW PUFFY JUNKIE" DISCOUNT - 15% OFF ALL SNOW PUFFY PURCHASES!!!

Discount only valid for customers who are wearing their "Snow Puffy" t-shirts. For those who don't have one yet, get yours for ONLY \$12 this month! While supplies last!!

This "Snow Puffy" t-shirt discount expires on November 14, 2012.

Have a great day!

Paalaa Kai Bakery
66-945 Kaukonahua Rd
Waialua, HI 96791

WAIMEA VALLEY

Annual Arbor Day Tree Giveaway and Plant Sale

Get a new Tree at the Hawaiian Electric Arbor Day Tree Giveaway. Plan to arrive early to pick up your Free Tree or shrub.  Hawaiian Electric Company

One plant per family, while supplies last!

- **Date: Saturday, November 3rd**
- **Time: 9:00am to 2:00pm**
- **Location: Waimea Valley's Parking Lot**

Some of the Plants for Sale:
Assorted Fruit & Food Plants
Rare Ornamentals
Native Plants, Assorted Chili Peppers
Black Pepper Vine, Cacao Trees, Mamaki

59-864 Kamehameha Hwy.
Hale'iwa, HI 96712
(808) 638-7766 www.waimeavalley.net
Open daily from 9:00am to 5:00pm





Council Chair
Ernie Martin
Serving You in District 2

The Importance of the Proposed Amendments to the City Charter

There will be two proposed amendments to the Honolulu City Charter on the November General Election ballot and I want to explain how both of these amendments can help to improve the delivery of basic city services.

Ballot Question No. 1 states:

“Should a minimum of one half of one percent of the City’s annual general fund revenues be appropriated for grants-in-aid to be awarded by the City to federal income tax exempt non-profit organizations to provide services to economically and/or socially disadvantaged populations or provide services for public benefit in the areas of arts, culture, economic development to the environment?”

If adopted by majority of the voters, this amendment would establish a fund of approximately four million dollars a year to be distributed to non-profit organizations that provide direct services to people in need of assistance. Right now, the City’s main source of revenue to support non-profit organizations comes from the federal government. The money is used to provide housing, economic development and human services to people of low and moderate income levels. I believe that the City should commit a portion of its own general fund revenue to these services and not rely totally on the federal government for such support. To make sure that the money is distributed fairly, no less than \$250,000 from the fund must be spent in each of the nine Council districts. Projects would be recommended for funding by an advisory committee appointed by the Mayor. In the event that the City cannot afford to allocate money to the fund due to a fiscal crisis, the requirement to deposit money into the grant fund can be waived by a two-thirds vote of the Council. We have traditionally relied on a variety of non-profit organizations to fill gaps in the delivery of services to those in need. This amendment demonstrates the City’s commitment to the continuation of these services to our local communities.

Ballot Question No. 2 states:

“Shall the revised City Charter be amended to authorize the City Council, on its own initiative or on the recommendation of the Mayor, to establish funds to ensure that, when appropriate, moneys collected by the City from licenses, fees, taxes and other revenue sources are set aside and expended for their intended public purpose?”

Under the City Charter now, only the Mayor can establish a special fund. The Council often agrees to the assessment of certain fees with the recommendation that the money collected be used for a specific purpose but there is no requirement that prevents the money from simply being deposited into the general fund. For example, when a fee for camping permits was proposed by the Administration in 2010, the Council’s concern was the anticipated revenue of \$366,000 would be absorbed into the general fund and not be used specifically for campsite improvements. A recent report by the City Auditor recommended that the Department of Budget and Fiscal Services establish a special fund for the collection of these permit fees to directly benefit the camping program such as better maintenance and much needed improvements to the campsites as well as increased security measures. This is a prime example of how the proposed Charter amendment could help to ensure that such fees are used solely for their intended public purpose and not get lost in the general fund.

Please take the time to think about the benefits of both of these Charter Amendments. It is your opportunity to do more than just express an opinion, your vote can change the way government works for you. Mahalo.

Is your child struggling with:

Motivation in school? Respect for peers and adults? Maintaining healthy relationships? Communicating their feelings? Showing empathy for others? Demonstrating appropriate boundaries? Showing confidence in themselves?

Join us for **Horse Play!** We will work with your child to improve many areas in their life by working with horses in creative and fun activities.

(808) 561-4184

Register your child today at www.hearthorses.com



Hawaii Equine Assisted Reflection & Therapy
horses healing with HEART

SIX SPECIAL NIGHTS

MONDAY \$2.95 BEER BOTTLES & DRAFT	TUESDAY \$5.00 OFF PIZZA REGULAR OR LARGE	WEDNESDAY SALAD NIGHT 1/2 OFF SALADS
THURSDAY \$3.95 NIGHT \$3.95 SLICES, SALADS, MAI TAI'S, WINE & BEER		SATURDAY \$4.50 NIGHT \$4.50 SLICES, SALADS, MAI TAI'S, WINE & BEER

FRIDAY NIGHT \$7.50 BURGER & FRIES

Dine In Only - 4:00 PM Until Closing - Haleiwa Shopping Plaza - 637-5095

PLUS \$2.00 Off with this Coupon

Some Restrictions Apply. See Restaurant for Details.
When Ordering Regular Priced Items. Good Anytime. One Coupon Per Person.
Can Not Be Combined with Other Discounts. Expires 12/31/2012.

We've Moved
66-037 Kam. Hwy., Ste. 3
Haleiwa, next to Growing Keiki



Saccoccio & Lopez
ATTORNEYS AT LAW
Serving Haleiwa since 1984

Bankruptcy
Personal Injury • Criminal Law
Landlord/Tenant
Traffic Offenses • DUI

Family Law
Adoption • Custody • Divorce
Paternity • Guardianship
Deeds, and Wills

637-7611
VISA/MC Accepted

Paul & Nita




Ka'ala Clay and Coffee Bar

- Ceramics studio with pottery classes for all ages
- Specialty classes available for families and children
- Coffee, Acai Bowls, Smoothies, and Art Gallery


Located on Farrington Highway next to Otake Store
Kaalaclay.com 808-341-1434

Bring in this coupon for **\$1 OFF** coffee or smoothie or **\$10 OFF** pottery class



Coffee!
You can sleep when you're dead!

6:30AM - 8:00PM
NORTH SHORE MARKETPLACE
WWW.ROASTMASTER.COM



Waialua Christian Church

We are a caring community devoted to following the way of Christ. The Bible is our standard of faith and life. If you are looking for a church home or would like to learn more in general, we invite you to our Sunday Worship Service which begins at 11am.

Aloha,
Pastor Steve Sturm & Congregation 637-9333
68-031 Aweoweo St. (One Block Mauka of Aweoweo Beach Park)

Lauren is From Our Community and For Our Community!



“I am not party-affiliated, as I put a lot of trust in both Democrats and Republicans who have let us down. Lauren is a local girl who represents not only the roots of Waialua, but also the generation that will need solid values in order to lead all of us today and in our future. Lauren is the person who I can trust, since she was born and raised in Hawaii and knows what our community needs.”

- Lori Lendio McKeown

“I would love your support this November 6th to serve our community where I was born and raised!”

- Lauren Kealohilani Cheape

LAUREN KEALOHILANI
CHEAPE
FOR *State House*
WWW.LAURENCHEAPE.COM





A Message From State Representative Gil Riviere

Aloha, North Shore.

This is my final North Shore News report as your Representative. I am so very thankful to have had the opportunity to serve this incredible district. I took my responsibilities seriously and I gave the job everything I had to give. Time went by very quickly, but we got a lot done.

I could not have accomplished so much work for the North Shore without the stellar support of my office manager, Trina Ishii. Trina brought abundant experience and professionalism to the office every day. As one who values quality work and follow through on commitments, I admire her calm, confident manner and dedication to thoroughly completing every task.

Whether we were organizing a disaster preparedness seminar at Sunset Beach Elementary, a volunteer work party for Waialua Kupuna Housing, an investigative tour in our district, or a meeting with Kahuku High School students, I never doubted that every detail would be properly coordinated by Trina.

As for my work in the House of Representatives, I am pleased to have played a significant role in combating legislation that would have devastated Hawaii environment law. I was also one of the leading opponents of Big Wind, a project that would place hundreds of windmills on Lanai and Molokai to send intermittent power to Oahu through a very expensive inter-island cable.

I was uniquely qualified to argue against legislation that would have changed the law regarding Supplemental EIS in such a way that we would never have won Keep the North Shore Country's lawsuit on the Turtle Bay EIS. Likewise, I personally saved the law that requires Special Management Area Permits for coastal subdivision planning.

It was through friendships and positive relationships in the Legislature that I was able to modify a law to allow Koolauloa Health and Wellness Center to purchase its headquarters. I blocked overnight accommodations on Oahu agricultural lands and I improved numerous other pieces of legislation as they moved forward.

On the North Shore, we were able to help constituents when requests came in to replace or upgrade road signage, relocate a bus stop to improve safety, follow up with other governmental agencies, and much more. We nearly always attended community meetings and conveniently met with residents both on the North Shore and at the Capitol.

Boasting about accomplishments is not something that comes easily to me, but this seemed like an appropriate time to recap some of the work we were able to get done in the past two years. In previous articles, I hope readers were provided useful insights into political antics at the Capitol and current events around the North Shore.

Since losing the Primary Election in August, I have begun my transition back into "the real world." I am spending more time with my family, surfing and playing baseball. I am also getting back into my mortgage lending career, something I gave up entirely while serving full time as your Representative.

GilRiviere.Info will remain online as a reference website for our district, and I will continue posting the occasional political comment or link on Facebook at Representative Gil Riviere. I will not disappear, but I may slow down a bit. Please feel free to stop me on the street or contact me if I can ever be of any help in the future.

Mahalo and Aloha, North Shore.

Jameson's
Relaxed sunset dining...

Happy Hour
Monday ~ Friday
3 p.m. ~ 6 p.m.
Bar & Bar Area

Lunch 11 a.m. to 4:30 p.m. • Dinner 4:30 p.m. to 9 p.m.
Sunday Brunch 9 a.m.

Jameson's by the Sea
located on Oahu's Northshore
at 62-540 Kam Hwy

Info and Reservations
808.637.4336

Olakino Maika'i

(Good Health)

by Naty Camit Hopewell

Breast Cancer

October has been designated "Breast Cancer Awareness Month," so a general overview of breast cancer is in order.

There are two main types: ductal carcinoma which starts in the tubes that transport milk from the breast to the nipple (most breast cancer is this type) and lobular carcinoma which begins in the lobules which produce milk. Breast cancer may be invasive or non-invasive. Invasive means the cancer has spread from where it started and non-invasive means it is limited to where it began. Many breast cancers are "estrogen receptor-positive meaning that estrogen increases its growth. Some are called "HER2-positive" which are faster growing; women who have this type have a higher risk of having the disease recur.

One in 8 women are diagnosed with breast cancer. What are the risk factors for developing breast cancer? 1) Age—your risk increases with age. 2) Family History—having a first degree relative (such as your mother or sister) with breast cancer. 3) Genes—some women have a gene defect that increases their risk by 80%. 4) Menstrual Cycle—women who get their periods early (before age 12) or go through menopause late (after age 55) have increased risk. 5) Child-birth—women who have never had children or who have them at age 30 or older. (More than 1 pregnancy or becoming pregnant at an early age decreases risk.) 6) DES--women who had taken this hormone in the 1940s through 1960s to prevent miscarriage. 7) Hormone Replacement Therapy—taking hormones for menopausal symptoms for several years. 8) Alcohol—drinking more than 1-2 glasses of alcohol per day. Some studies suggest that breast feeding may decrease the risk of developing breast cancer.

How can you help yourself? Get regular mammograms. The debate rages regarding screening mammograms beginning at age 40 or 50. You have to decide the appropriate starting age for yourself. Do monthly breast exams at the end of your cycles using the flat part of your fingers; fingertips are overly sensitive and some women confuse normal breast issue with lumps.



The US Navy Pacific Fleet Band

presents

a free musical program

Sunday

November 4th

4 PM - 5:30 PM

Waiialua Bandstand

Visit our website at

www.waiialuabandstand.com

WAIMEA VALLEY

Up Coming Events

**Kanikapila Sundays
with the Abrigo Family**
Sunday, November 18th
Sunday, December 16th

Kanikapila is a Free event in
our Pavilion area from 1:00pm to 4:00pm
Kama'aina & Military
Special Valley Admission
for this day:
\$5.00 for Adults
\$2.50 for Seniors (60+) & Children (4-12)

Moon Walk

Friday, November 30th

Friday, December 28th

Starts at 7:30pm \$5.00 per person

**Arbor Day Tree Giveaway
& Annual Plant Sale**

Saturday, November 3rd

9:00am to 2:00pm

Makahiki

Traditional Hawaiian Celebration
Saturday, December 1st



Looking for that Special Holiday Gift?

Waimea Valley's Annual Passes



-Family or Individual-that lasts the whole year through!



59-864 Kamehameha Hwy.

Hale'iwa, HI 96712

(808) 638-7766 www.waimeavalley.net

Open daily from 9:00am to 5:00pm

“The best part of this campaign has been going door to door to meet the people of the North Shore and experiencing their wonderful spirit of ‘ohana and aloha. This spirit deserves to be represented at the State Capitol and I am humbly asking for your vote to do that as your State Senator.”

-Colleen Meyer



Colleen
MEYER
 State Senate 23 

Paid for by Friends of Colleen Meyer
 P.O. Box 4199 Kaneohe HI 96744-4199

Colleen is pictured with North Shore small businessman and community treasure, Lee Bryant, and his employees. Whenever there is a community problem, Lee is the first one to step up and help. His spirit of giving back to the community is an example of what makes the North Shore so special.

COLLEENMEYER.COM



Country Talk Story with Choon James

Your vote counts!

November 6 elections is around the corner. Some have already voted either through absentee voting or early walk-in.

Many of us are very concerned about the rising costs of living in Hawaii and the government's lack of desire to rein in illogical spending.

There was a time when a property owner's situation was secured when the mortgage is paid off. With today's rising costs, many are finding themselves with utilities bills and property taxes equivalent to past mortgage payments.

The Honolulu Rapid Rail Project has become a very controversial topic. Rail has a place in modern cities but the Honolulu Rail Project started on the wrong foot with unholy commingling of big contractors like Parsons Brinckerhoff and city bureaucrats/politicians.

In 2006, the rail began with 34 miles for \$2.7 BILLION

In 2012, it's reduced to 20 miles and mushroomed to \$5.3 BILLION.

To reconnect the original spur to University of Hawaii and Honolulu Airport, the estimated price is \$9.03 BILLION. This is not counting the inevitable cost overruns in government projects. A recent federal Porter Report stated that, "Oahu has ability to pay for rail project, but must forgo other expenses." Da bus comes to mind.

Former Governor Ben Cayetano wants to restore some fiscal sanity to city hall. He has squarely highlighted municipal projects that the city cannot run away from:

\$5-6 BILLION Sewer upgrades, partly mandated by EPA consent decree.

\$1.6 BILLION for roads.

\$5.6 BILLION aging water system.

Some special interests loathe to see Cayetano win. After all, it's about billions of dollars of contracts. We've unfortunately been bombarded with a \$2M Smear Campaign by Pacific Resource Partnership, a union group. PRP has flooded the air waves with I Mua Rail and smear Cayetano ads.

It's our opinion that the basic infrastructure projects that Cayetano suggests will bring more local jobs and help improve Oahu's environment. The Honolulu Rail's major contracts have already been given to mainland and foreign companies in the billions, leaving hopeful locals out in the cold.

HAWAIIAN ELECTRIC COMPANY
INVITES YOU TO

CELEBRATE ARBOR DAY!

PLANT A TREE – SHADE YOUR HOME
PROTECT THE ENVIRONMENT

Saturday, November 3, 2012
Starting at 9:00 a.m.

Pick up a FREE tree—one per family—while supplies last. Select from patio plants, flowering plants, fruit trees, and shade trees.

Experts will help you select the plant best suited to your needs, and you will get a free planting guide.

ARBOR DAY TREE GIVEAWAY

Go to the location nearest you and plan to arrive early.

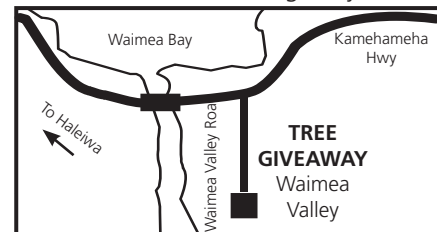
Wahiawa Botanical Garden

1396 California Avenue



Waimea Valley

59-864 Kamehameha Highway



Hawaiian Electric Company



WAIMEA VALLEY
HI'IPAKA LLC

Sponsored by Hawaiian Electric Company, Kaulunani Urban and Community Forestry Program, U.H. Urban Garden Center, Wahiawa Botanical Garden, and Waimea Valley.

For more information, visit: www.arbordayhawaii.org

RICHARD FALE will fight to protect our 'aina by:

- Upholding current environmental laws
- Repealing the Public Lands Development Corporation
- Supporting Hawaii energy independence



Surf Season is Here!

**Music is back at Breakers!
Karaoke, 80s Dance Party, DJs and Live Bands!**

**Come try Chef Roc's Famous Smoked
Ribs!**

**Football on 8 Big Screens Monday,
Thursday and Sundays!**

**Join the Fun at
BREAKERS RESTAURANT & BAR!**

**Chef Roc Cassarino
619-933-3991
Chef Roc Approved Test Kitchen
Roc@ChefRoc.com
www.ChefRoc.com**

WAIMEA VALLEY welcomes

Hale'iwa FARMERS' MARKET

All your favorite farmers, foodies and artisans coming together again on the North Shore!
Come hungry! Live Music!

**Thursdays 3-7PM
Pikake Pavillion & Lawn**

Free admission & free parking

Big Changes at Breakers Restaurant and Bar

Breakers has recruited the talents of Celebrity Chef Roc of Southern California. For the past 26 years Chef Roc was known around the world as one of The Clever Cleaver Brothers.

These culinary cut-ups were regulars on the TV guest circuit with appearances on "The Tonight Show starring Jay Leno," "Live! with Regis," "Fox & Friends," "The Other Half," "CNN Headline News," "Entertainment Tonight", "The View", and many others. Their syndicated TV cooking vignettes "KITCHEN CUT-UPS!@" have been broadcast in over 50 countries in five languages. Their 10th season of the national television feature "Tailgatin' with The Clever Cleaver Brothers@" is seen weekly by more than 2.5-Million viewers during the pro-football season

Chef Roc has big plans for Breakers and the North Shore. Is the North Shore ready? November 2nd will be the live taping of the Chef Roc Approved Culinary Underground TV Show. It will air starting November 16th @ 9:pm on Saturday. The show can be seen on all the islands on Channel 14 and on Cox Cable in Southern California.

Breakers is bringing back live local music starting this week. Check our Facebook page for show Times @ breakers.haleiwa.

November 2nd we'll have a brand new Breakfast, Lunch and Dinner Menu. Put on your fancy duds on Friday, Saturday and Sunday we will be going a little upscale with New Items such as Live Maine Lobsters, Aged Tomahawk Ribeyes, Bone-in Prime rib, Beef Wellington and much more.

We hope to see you at the Re-Grand Opening on November 2nd.

Mahalo, Chef Roc



**Direct From
Donovan**
**State Senator
Donovan Dela Cruz**

EXERCISE YOUR RIGHT TO VOTE

There was a recent story on CNN that featured Hawaii as one of the states that ranks consistently among the lowest in the nation in voter turnout, if not the lowest. Even in the 2008 election when Hawaii-born President Barack Obama was on the ballot, only 48.8 percent of the voters turned out to vote, which was the lowest in the nation. In 2010, the low voter turnout resulted in only 14 percent of Hawaii's population deciding on the outcome of the election. This is a vast difference from 90 percent voter turnout in the years after statehood.

Hawaii's dismal voter turnout continues for this year's elections. Hawaii remained among the states with the lowest voter turnout in its elections with only a 42.3% turnout for the Primary Election. Out of 687,500 registered voters at the time, only 290,766 turned out to vote with 21.6% voting at precincts and 20.7% voting absentee. For the General Election, the number of registered voters totals over 700,000, the highest ever for the state. Hopefully, the turnout will be better.

Historically, during presidential election years, voter turnout is higher than non-presidential years but in Hawaii, we haven't shown any significant difference. Oahu is also voting on a new mayor, the outcome of which may possibly decide rail's fate. Hawaii is also voting for a new U.S. senator to replace Senator Akaka. The results of this race and both U. S. Representatives could possibly be significant in the balance of power in the respective chambers of Congress and to whoever gets in for President.

This year's elections include besides the Mayor, Prosecuting Attorney, all of the Legislature, certain OHA trustees and certain districts of the City Council.

If you are registered to vote and would like to vote absentee, go to the following link for information and download the application: http://hawaii.gov/elections/forms/absentee_application.pdf. The last day absentee ballot applications will be accepted by the City Clerk is October 30.

Early absentee walk-in voting started on October 23 and ends November 3. Polling places on Oahu are at City Hall (Honolulu Hale), Kapolei Hale and Pali Golf Course. Hours are 8:00 a.m. to 4:00 p.m. You need to bring proper identification with you.

I encourage everyone to exercise their right to vote. Every citizen should exercise his/her right to vote. It is a privilege not available to all peoples of the world. We in America have a voice in our government.

KUA 'AINA

The Best!
· IN HALEIWA ·
637-6067
· IN HONOLULU ·
591-9133
AT WARD CENTRE

HALEIWA · TOKYO · HONOLULU · LONDON

ALOHA GLASS TINTING

Make your home more comfortable block 80% of solar heat and 99% of UV rays. Solar Guard Window Film comes with a lifetime warranty.

Call today 457-0326
alohatinting.com

DA BEST!
Which is your favorite?

Located Right Next to the Paalaa Kai Mini-Mart

Waialua's Hometown Bakery
Home of Snow Puffies
and Sada's Malassadas

We hope to see you again soon!

Paalaa Kai Bakery
66-945 Kaukonahua Rd
Waialua, HI 96791

Party For George!

North Shore legend, **George Ramos**, is battling stage 4 cancer. This event is a fundraiser to help George with his medical expenses.

**Wednesday, November 7, 5:30 to 8:30 PM
At Breakers Restaurant in Haleiwa.**

Music by

Paula Fuga!

Join us for some awesome music, pupus, silent auction, raffle, and lots of fun!



Adults \$20, Kids under 12 \$10
Tickets available at the door and at
hawaiipaddleboardassociation.com
100% of the proceeds will be
donated to George .

George Ramos, the poster boy for tough!

HIC PRO SIGNALS START TO HAWAII'S WINTER SURF SEASON

Official Qualifier of The Vans Triple Crown of Surfing

October 29 - November 10, 2012 at Sunset Beach, North Shore Oahu, Hawaii. Live Webcast at www.vans.com/hic-pro

KAILUA, HI (Oct. 17, 2012) -- On the heels of the first major winter swell to hit the Hawaiian Islands, the HIC PRO presented by VANS will launch the 2012/13 North Shore big wave winter competition season on October 29, running through November 10. The HIC PRO is a \$95,000 4-star rated Association of Surfing Professionals event.

A vital launching pad for local rising surf stars, the HIC PRO is a local qualifier for the 30th Anniversary \$1million Vans Triple Crown of Surfing that will follow from November 12 through December 20.

A total of 144 surfers from 13 nations will compete in the HIC PRO, with a 50 per cent representation by local Hawaii surfers. The 4-star rating of the event

makes it a critical source of ASP ratings points for all who have entered. Athletes will come from as far away as Argentina, France, and Australia.

The defending champion of the HIC PRO is Ezekiel Lau - a junior-aged surfer who just this week placed second in the ASP World Junior Championships in Bali. The newly crowned ASP World Junior champion - Australia's Jack Freestone - is also entered into the event.

Other notable HIC PRO contenders include Hawaii's Sebastian Zietz, 6-time Vans Triple Crown champion Sunny Garcia, former HIC Pro champions Billy Kemper, Pancho Sullivan and Myles Padaca, and Maui's Ian Walsh and Clay Marzo. International contenders include #1 seed Jean De Silva (Brazil), former world champion Mark Occhilupo (Australia), and Joan Duru (France).

Sunset Beach Christian School visits Kahuku Farms



Friday, September 14th was a special day for the 23 students at Sunset Beach Christian School. The lunches were packed and parents were waiting at 9:30 for the short drive to Kahuku Farms. The tour began with tasty fruit treats for all from the gardens of the farm. After a short introduction from Kylie and Judah, the owners of the farm, it was off to the wagon ride. The children observed the wide variety of fruits and vegetables grown on the windward coast. They learned about the stages of growth and the process of harvest. The highlight of the ride was when the wagon stopped under the canopy of banana trees. The students were allowed to offload and forage for fallen bananas. At the end of the trip each student went home with a container of soil with a lettuce

seed in it.

Sunset Beach Christian School's primary mission is to provide a Christ based education to the elementary age children of the North Shore. Our student to teacher ratio is small enough to offer personalized attention to each student. If you think this setting would be right for your family stop by for a visit. We have open enrollment, and will accept applications all year long.

Finally, on behalf of Sunset Beach Christian School, a fond "Aloha oe," to Pastor Ron Valenciana. Pastor Ron was loved by many here, and will be remembered for his selfless acts of service and loving heart for the North Shore Community. Our deepest condolences to his family..



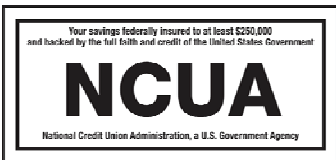
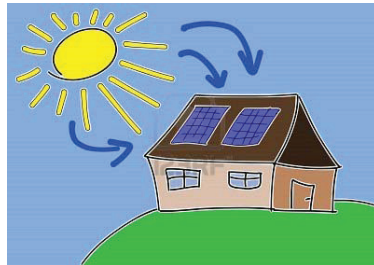
WAIALUA
Federal Credit Union



**Looking to install Solar Photovoltaic?
Consider a Home Equity Loan from Waiialua FCU.
No closing costs and a low interest rate can help you on
your way to lowering your electricity bill.**

Current HELOC Rate is 3.75% APR*

***Annual Percentage Rate based on an index of
3.50% plus the monthly average of the 26 week
Treasury Bill (Auction High) and may be adjusted
annually each March. Please call for more details.**



You are eligible to join if you live or work in Waiialua or Haleiwa.

Phone: 637-5980 Located in the Waiialua Shopping Center



Waimea Bay, October Swell



Emi Erickson at the Bay



BANZAI NORTH SHORE WIRELESS

Tons of great surf on the North Shore create lots of smiles all over the place. Will it be an El Nino season? There has been much talk about "El Nino" and the fact that it can cause big surf for Hawaii. An El Nino condition is essentially a warming of the waters in the Pacific. Besides causing big storm surf El Nino is credited with causing widespread drought and heavy rains in other parts of the World. It is a much watched and anticipated shift in ocean conditions, the "southern oscillation phenomenon". The National Oceanic and Atmospheric Administration and The National Weather Service have downgraded the El Nino conditions stating "the chance is reduced for El Nino to develop during Northern Hemisphere fall/winter 2012/13. Tropical convection increased near the Date Line, which is consistent with weak El Nino conditions, but also remained elevated over eastern Indonesia which is further westward than expected, thus indicating neutral/weak El Nino conditions." We have to consider though that we are talking about the weather, it changes. So far so good with swells and conditions, surf has been firing!

Congratulations to Malia Jones. Surfer first and model second Malia Jones is keeping busy. Jones grew up right at Rocky Point with her famous surfer family. Malia Jones was a Jr. Surfing Champion at the age of 15. She has been credited with being one of the most inspirational people, bringing many surfer girls to the sport. Jones was dubbed one of the 50 most beautiful people by People Magazine and has been traveling and modeling for companies such as VO 5, American Express, Insight, Capri Sun and tons of big time magazines. She has done many things including being a consultant in the animated film Lilo and Stitch and is a swimwear designer. She will be keeping even more busy with her second child on the way. It will also be a second for father and her equally famous husband Alex O'Loughlin, the star of Hawaii Five O. Congrats to the lovely couple! See you in the water soon Malia!

The ASP, Association of Surfing Professionals, tour is in Portugal as of this writing at the Rip Curl Pro Peniche. Pancho Sullivan is the expert commentator for the event. Great job Pancho! Things are heating up for The Vans Triple Crown of Surfing. They have announced a huge series. It's the 30th anniversary and a One Million cash purse is on offer. The overall Vans Triple Crown winner gets \$100,000 cash, a Harley Davidson and an incredible Nixon watch. Kelly Slater current World number two, has confirmed his entry as has John John Florence and most of the top 32. There is also a Hawaiian Airlines air show prize, 250,000 miles to the top fly guy. The Vans Triple Crown starts November 12 and runs through December 20th. Look for the official qualifying event, the HIC Pro, Hawaiian Island Creations, contest at Sunset. The event starts October 29 - November 10th. Ezekiel Lau will be defending his title in a field that includes a 50 percent Hawaiian contingent.

The Stand Up World Tour event finished up at Turtle Bay in October. Maui's Kai Lenny won both the long distance and sprint races to take the Title of World Champion. Annabel Anderson from New Zealand also won both and is World Champion. The North Shore's Noa Ginella ended up a respectful 10th overall in that series.

Ladies is your hair a tangled mess from surfing? I found the perfect hair brush, the "Wet Brush". Ask Randy at Silver Shears in Haleiwa, he has this magic brush. Just up the road from there take a peak at the Chuns Store. Local artist Chip Lane has spruced it up for the owner and its current tenant, Paddle Surf Hawaii. Chip Lane is a great artist in our area and sort of unknown to the World. Another great North Shore talent who loves surfing.

Speaking of talent. Mom Karla Costa Taylor went back on the IBA World Bodyboarding Tour and is cruising in 4th place. Karla has just launched a new Women's board model that is great for women and keiki. Sizes are 37.5, 38.5 and 39.5 smaller for more compact bodies! Find more information on www.launch808.com her new web site. Karla will be finishing up her run in Puerto Rico November 2-13. Good luck Mrs. Taylor.

Did you know that there is a National Wildlife area on the North Shore? The James Campbell National Wildlife Refuge is 126 acres and was established in 1976 to protect native wildlife. These are the kinds of things you find out when you become a member of our Chamber of Commerce. The Chamber of Commerce exists to promote, maintain and encourage the historic, cultural, civic and economic welfare of the North Shore district. Be a part of your community, join in. They are doing a fund-raiser right now "Bucks for Bricks". Check it all out at www.gonorthshore.org.

Do you surf Waimea Bay? Know that there is another great organization, Malama Pūpūkea Waimea. They work to protect our cultural and natural resources of the Pūpūkea and Waimea Ahupua'a. They do all kinds of things including counting fish. Check um out and volunteer, www.pupukeawaimea.org. Big mahalo to surfer Sophia Bartlow who so graciously volunteered to help out the organization. A true FIHI Girl!

FIHI Girlz Sports TV is celebrating it's 4th anniversary. The all Women's sports show is in production on the North Shore and airs on OC16, channel 12, Saturdays at 9pm or watch it online anytime at www.oc16.tv/shows. Just a little plug! Mahalo, see you in the tube!

Banzai Betty banzaibetty@hawaii.rr.com



Waialua - The Saga of the North Shore

Chapter 21 - The Daedalus

By Kalewa

Lieutenant Richard Hergst was the Royal Naval Commander of the civilian merchant ship Daedalus. He had missed catching up with Captain Vancouver at Kealakekua Bay by ten days. Having been there as a midshipman with Cook in 1779, he still distrusted the Hawaiians. The Englishmen, wanting only food and water, had received orders not to sell weapons to Kamehameha, who would trade for nothing but firearms. Thus, little was accomplished there.

Hergst's orders were to proceed to Waikiki if need be, but remembering the lovely valley he had briefly visited in 1779, he chose instead to sail to Waimea. So it was that on the afternoon of May 7, 1792 the Daedalus sailed close enough to shore that local canoes were able to come out and trade. In the evening he stood off shore asking the natives to bring more supplies the next morning. An old O`ahu priest got permission to stay aboard for the evening and was later promised passage to Kaua`i. There was a strong east wind and current running at the time, which carried the ship downwind, requiring three days to return.

On the afternoon of the 11th they anchored three miles off-shore. Lt. Hergst ordered the ship's cutter set in the water, where trading was to commence. Instead of trading for supplies as ordered, the crew started exchanging iron for artifacts and curiosities which would bring good money back in England. Hergst lost his temper and began yelling and tossing the Hawaiians overboard, including the heavily tattooed kahuna-nui Koi. The last Hawaiian to leave the ship was a red-headed wench, who surprised Hergst by saying: "Maybe I no like you stay my moku too... Englis make`".

The old O`ahu priest was the only Hawaiian still aboard. He had been teasing the young men about the pretty girls awaiting them on land, but he was now most earnest in discouraging the Englishmen from venturing ashore. "No go Waimea. Bad kanaka in there. Only trouble." He became suddenly silent when he saw Hergst ordering men and empty barrels in to the cutter. Hergst wanted to go ashore unarmed, so as not to tempt thievery. Nonetheless, a musket or two made it into cutter before they rowed away.

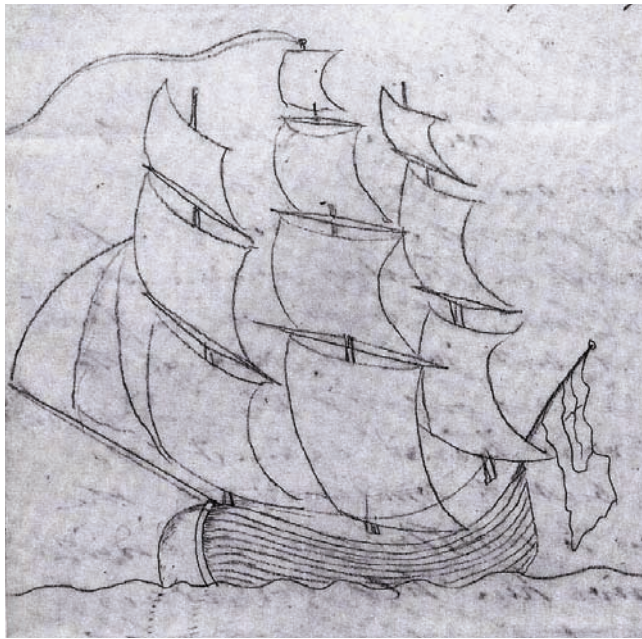
In those years, the sand was out, so the sailors were able to row up to the fork in the Pili`a`ama

Stream. They beached the boat on the western shore. Four men stayed with the cutter while some young Hawaiians quickly volunteered to roll the barrels towards the fresh water, two-hundred yards upstream. A young Portuguese named Manuel tried to keep up with them, while Hergst and Gooch were led further inland on some pretext. A sailor named Franklin was with them for a while, but was sent back with some instructions about bunging the barrels properly.

On his way back, Franklin noticed that the women and children were no longer to be seen and the men were pulling their canoes away from the beach. Manuel

was having trouble with the youths who were supposed to be helping him. A wildly tattooed man was seen running at Manuel with a long dagger, yelling "Kapu! Kapu!!" Manuel cried out for help, but was struck down and killed on the spot. Franklin was grabbed about the waist, but managed to shake free and run through a line of natives towards the cutter.

By then, a group of "painted warriors" was seen running down the trail on the eastern side of the valley, cutting off



Hergst and Gooch. A pair named Kapale`aiuku and Kuaniu began stoning the officers. William Gooch was stabbed through chest then Lieutenant Hergst was stunned and eventually killed with stones.

The men in the cutter pushed off to get back to their ship, some rowing and some firing muskets. They could see Manuel's mangled body laying in the sand beside a busted barrel or two while the officers' bodies were being carried away.

The Daedalus fired a few cannon balls in to the valley before dark then lay off-shore all night. In the morning the English sailors rowed ashore to retrieve the three bodies, but were told that they had been taken away. A throng of 200 Hawaiians quickly gathered, forcing the cutter to return to the ship. There was some musket and cannon fire before the Daedalus sailed, but it had little effect.

The old O`ahu priest had remained aboard throughout the episode. When about five miles from shore, he was told the ship was proceeding directly to the Pacific Northwest and not to Kaua`i. Wearing the greatcoat given him by the late Commander, the old O`ahuan jumped overboard.



66-434 B Kamehameha Hwy., Haleiwa, HI 96712

Phone: (808) 637-4558 • Fax: (808) 637-4556

E-Mail: info@gonorthshore.org

Web Site: www.gonorthshore.org

October 23, 2012

The North Shore Chamber of Commerce will hold its annual Christmas Party, Awards and Auction at Waimea Valley this year on Wednesday, December 5th.

This wonderful holiday event celebrates the people who have made lasting contributions to our North Shore community through the North Shore Kama'aina of the Year award. This year the award will go to Patsy Gibson for her service to our community in being a key leader in the North Shore Outdoor Circle for many years, protecting our view planes and helping keep the North Shore clean, green and beautiful. She was Haleiwa Main Street's Beautification Chair during the landscaping of Weed Circle at the entrance of Haleiwa Town.

What: North Shore Chamber of Commerce's annual Christmas Party and Auction.

When/Program: Wednesday, December 5, 2012 at 6:00pm: no-host cocktails, awesome auction, and tribute to the North Shore Kama'aina of the Year

Where: Waimea Valley, Pikake Pavilion

Prices:

Individual tickets: \$60 each for members and one guest; \$65 each per non-member.

Reservation Deadline: Must make reservation and pay by November 26th.

For more information, call the North Shore Chamber of Commerce at 637-4558 or go to www.GoNorthShore.org

Contact:

Antya Miller

(808) 637-4558

info@gonorthshore.org



The Hale'iwa Family Dental Center, Ltd.



presents
"Comfort Dentistry"
including—

- Relaxation Glasses
- Television Glasses
- Caring Staff
- Special Medication to help you relax
- Laser Cavity Detection
- New Patients Welcome!

Your teeth are much too important to neglect.

Call: 637-9652
for your reservation

We're conveniently located behind First Hawaiian Bank
in the heart of Hale'iwa.

Oceanside Chapel Service at Turtle Bay Resort



Every Sunday at 9 a.m. in the beautiful
oceanside wedding pavilion.

- Non-denominational 45 min. service
- Traditional & Contemporary music
 - 15 minute sermon
- All are welcome! Free validated parking

Hosted by Pastor Kurt Kamikawa
808-358-6066

Pastor Bob Major 808-681-8889
Jamin Hiebert

*When church is pau,
enjoy dining at the Palm Terrace,
Hang Ten Pool Bar, or Lei Leis.



BULLETIN BOARD

Pilates with Linda Yadao

Private, Semi-Private and
Mat Classes
Over 30 Years Experience

Call: 637.1230
linda@ynrmarketing.com

HOLOHOLO MOBILE SCREEN SERVICE



- *new window installation
 - *new screens/re-screens
 - *pet proof screens
 - *jalousie repairs
 - *porch enclosers
 - *sliding/swinging screen doors
 - *pet grills & doors
 - *solar screens
 - *screen door roller repair
- FREE ESTIMATES**
808-783-8764
www.Oahuscreens.com

FMS

Financial Management Solutions
Income Tax Services, Comprehensive Financial Services, and Insurance Planning

Complete Financial Services are available on-line.
Please visit our website for more details.
Virtual Office Address:

www.FMS-USA.com

Office: 1-855-753-7750 • Fax: 1-866-307-3330 • Email: amber@fms-usa.com

Amber M. Dolg, Registered Representative, H.D. Vest Financial Services, Inc. Securities Offered Through
H.D. Vest Investment Services SM, Member SIPC A non-bank subsidiary of Wells Fargo & Company,
6333 North State Highway 161, Fourth Floor, Irving, Texas 75038, 972-870-6000

Green Waves Landscaping

Ilan Freitas
Owner

Yard Service
Tree and Coconut trim
Splinkler Installation and repair
Grass Planting and other services
Phone numbers: 372-8848/371-9617
greenwaveslandscaping@yahoo.com
Refer a friend and get one cut free!

"THE BULLETIN BOARD THAT IS IN EVERYONE'S HOME"

BULLETIN BOARD



Featuring the largest selection of certified organic produce on the North Shore. No panic...ours is organic. Open 7 days. Mon.-Sat. 9am-6pm. Sun. 9am-5pm

66-445 Kam. Hwy
Haleiwa, Hawaii 96712
Next to the Post Office
808-637-6729 • 808-637-1922 fax



DR. PORTER TURNBULL
Chiropractic Orthopedist
(808) 638-8740
Appointments available Mon.-Sat. (evenings by appointment)

- Industrial accidents & auto injuries
- Sports injuries • Spinal care
- Safe, Effective, and Gentle

N-C PLUMBING & SUPPLY

Cont. Lic. No. C-8913



- RESIDENTIAL & COMMERCIAL SALES & SERVICE
- CONTRACTING & DESIGN • HOME PLUMBING SERVICE
- PLUMBING FIXTURES, HEATERS • FREE ESTIMATES

Nestor P. Calilao (Owner)
P.O. Box 769
Waiialua, HI 96791

Bus: 637-8662
Res: 638-5157
Cellular: 372-8718

email: nncplumbing@hawaii.rr.com

Farmer & The Baker, LLC

(Formerly Mokuleia Landscape & Nursery)



Trees, Palms & Shrubs

Contact Us: 808-341-1992



Restaurant & Margarita Bar

- DAILY SPECIALS -

Island Fresh Fish Tacos
Premium Margaritas

Large Parties Welcome Open Daily 9:30am - 9:30pm
637-3059 • North Shore Marketplace • Haleiwa
www.CHOLOSMEXICAN.com



COWPER CONSTRUCTION

LIC. #AC 18275

GENERAL ENGINEERING CONTRACTOR

Full Service Sitework Contractor

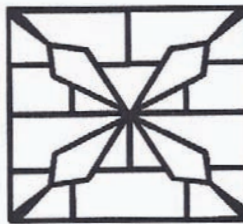
Septic Systems & Tanks
25 yr. exp.

Michael Cowper 638-7200
cowperhawaii.com



754-3579
nathant@beareng.com
Waiialua, HI

- Home Inspection
- Structural Inspection
- Septic System Design
- Grading Plans
- Retaining Wall Design
- Drainage Solutions
- Utilities Planning
- Foundation Design



GROVER MASONRY

Rick Grover
(808) 983-9331 call
(808) 638-8120 office
rick@grovermasonry.com

License # C-18302

Munden Design & Build

Lic.#BC19632

Design • Plans • Permits • Construction
Additions & New Residences
808 391-8616

Providing quality work since 1978

HAIR SPECIAL
Full Highlight and Cut \$100.00
GINA WALKER

Hairdresser to the stars
from Malibu, CA
Senior Stylist & Color Master
20 years experience
North Shore Salon & Spa
in Haleiwa Town 808-375-3984



The North Shore News is published every other Wednesday and mailed free of charge to all North Shore homes and businesses. Extra copies may be obtained at our office.

PRESS RELEASE POLICY: Submit press releases in person or by fax, mail or email to Editor, North Shore News, P.O. Box 1117, Haleiwa, HI 96712. Please type your releases and keep them shorter than 200 words unless they are of an unusual news interest. Releases should be viable news stories and are published on a **space available basis only**, with priority given to those received in our office first. You may attach photos. We are not responsible for the return of any photos. All materials are submitted at owner's risk. We reserve the right to edit and/or refuse all submissions including advertising.

EDITORIAL POLICY: We welcome articles and letters from our readers. Letters to the Editor are published on a space available basis only and preference is given to shortness of length, and quality of content. We prefer to run not more than one letter, per person, per 6 month period. Letters subject to edit.

Views expressed by our contributing writers and advertisers do not necessarily reflect the view of the management and staff of the North Shore News. All rights reserved. Reproduction in whole or part without permission is prohibited. © 2012.

Editor & Classifieds

Linda Seyler

Typography

Downtown General Store

Photography

Trish Coder

Contributing Writers

Alec Cooke
Betty Depolito
Naty Hopewell
Choon James
Kalewa

Richard Sterman

State Senator Donovan Dela Cruz
City Councilman Ernie Martin
State Representative Gil Riviere

CLASSIFIEDS

PAUMALU ELECTRIC

David C. Hancock
638-9054 / Lic#C18074

SHORE ELECTRICAL SERVICE

New Const-Remodels
638-0049 / Lic#C20777

LGR Construction

Remodel • Repair • Design
Drafting • Painting • Small Jobs
Affordable rates. 343-4453/Lic#26759

Dog/Cat Nail Trimming

at your home only \$15.00
Call Julie 637-5395

North Shore Massage

Maria Nicoll
375-8979

Lawn Care For You

Mowing, Trimming, Light Hedging
Call Thomas 637-5839

EXPERT ELECTRICIAN

Fans, emergency services, etc.
Jim Richards 371-9369

PARADISE PLUMBING INC.

New Const • Repairs • Remodels
808-368-1473 / Lic. 29856

BEACH PLUMBING & ROOTER

Over 30 years experience
Call Larry 637-6400

Handyman Services

Remodeling, Carpentry, Floors,
Concrete, all parts of Construction
Call Bob "The nicest guy in the
business" Ph. 282-2812

Haugan Construction LLC

Build & Repair • Big & Small
Let's Talk
Steve 542-9269

J&L SERVICES HALEIWA
QUALITY LANDSCAPE AND
GARDEN MAINTENANCE. ALSO
PRESSURE WASHING, HEDGES
AND PLANT INSTALLATION.
CALL 673-1384 FOR EST.

Handyman / Caretaker

30yr. Carpenter Free Estimates
Call Brendan 286-0131

N.S. Property Maintenance

Power wash, painting int/ext,
deck repairs, extensions,
fences, gates,
carpentry & remodels.
Maintenance, lawn & yard.
Chris 381-5213/638-0659

BOW WOW BUNGALOWS

Licensed Boarding Kennel
North Shore, Oahu
Reasonable Rates
Ph. 637-2562

These Dogs Have Fun!

HARVEY'S REPAIR, LLC

24 hrs Towing Service
*Specializing in opening
locked car doors*
Call any time 478-0333

GERMAN CAR SERVICE

Professional-Qualified
Technician
Call Gary
637-6800

DWG / DESIGN / ARCH 753-0796

**RETIRED ARCH SEEKS
RES & Sm Comm PROJ
CAD / HND DWG**

**North Shore News
For Advertising Rates
call**

(808) 769-7999

DT_OYAMA@YAHOO.COM

BIKRAM YOGA

See our new studio, anti-
microbial, anti-bacterial
carpet and more!

Please call for class schedule

637-5700

Offshore Plumbing, Inc.

Commercial * Residential
Septic * Solar * Design

Mike 630-1407
Steve 371-3451

Lic. #28113

steve@offshoreplumbinginc.com

BOBBY'S BODIES

Tuesday evenings at 5:00 p.m.

• Body Toning

Friday mornings at 9:00 a.m.

• Cardio Pump/Fat Burner

For more info: call Bobby, owner of
BOBBY'S BODIES at 637-4150

SHIATSU • LOMI

Aromatherapy
Milica Barjaktarovic
Lic # MAT8348

351-0848

HumanRemodeling.com

PIANO LESSONS

Guitar, Ukulele, Mandolin,

Bass, Songwriting

637-4635

Painting

RRP Certified

Licensed Lic#31602

Kamaaina Rates

Oahu Precision Painting
Skip Wunderlich 220-9083

Next Issue - Nov. 14, 2012

Deadline Date-Nov. 1, 2012

SUBSCRIPTION RATES

If you live outside the North Shore area on Oahu, neighbor islands, or the mainland, you can subscribe to the North Shore News. Our annual subscription rate is \$35 for 25 issues delivered by standard bulk mail (2-3 weeks), or \$55 for 25 issues delivered by first class postage (3-5 days). Call our office for payment information at (808) 637-3138.

HOW TO CONTACT THE NORTH SHORE NEWS

Letters to the Editor, and other items submitted for publication consideration may be sent to us via:

MAIL: P.O. Box 1117, Haleiwa, HI 96712

E-MAIL: NShoreNews@aol.com

FAX: (808) 637-8862

PHONE: (808) 637-3138



CLASSIFIED ADS

LEARN TO SWIM
AT THE
HAWAII SWIM SCHOOL
ON THE NORTH SHORE
Developing swimmers since 1982
Haleiwa Rd. at Smiley Place
637-4863

Lisa Carley Skin Care
637-9400
lisacarley.com
67-292 Goodale Ave. #104
Waialua Shopping Center

ANGELS PLUMBING
Repairs
Remodeling
Renovation
638-7878
Lic. #C12004



THE LAWN RANGER
Lawn Maintenance
no yard too hard
no lawn too far gone
We mow betta
258-6439 Dan Fatchett

NORTH SHORE CHAMBER OF COMMERCE
*An Affiliate of
The Chamber of Commerce of Hawaii*
Business Services Center
Fast & convenient fax, copy,
scan, computer/internet,
laminates, etc.
Across from Haleiwa post office.
North Shore Chamber of Commerce
637-4558 or 342-8557

Marianne Abrigo, Properties
Specializing in -
North Shore
Real Estate
Ask for our list of available
properties and/or a
free market analysis.
Marianne M. Abrigo
"Realtor since 1974"
Office **637-3511**
Fax **637-0777**
Email **mabrigo222@aol.com**

Body by Tracey
Cardio, Strength &
Conditioning at
Sunset Elem. Pavillion
Mon/Wed/Fri @ 8:30am
Tues/Thurs @ 6pm
Contact (808)799-7214
or Traceybjj@gmail.com

North Shore Mobile
Massage
Lower/Upper Back & Neck
Pain • Sport Injuries &
much more • multiple
therapist available
Dacia Rollins - Lmt#11170
808-723-1934

HELP WANTED
BUSSERS/SERVERS
Pizza Bob's in Haleiwa is looking
for BUSSERS/SERVERS. Experience
preferred. Apply in person
at 66-145 Kam. Hwy.

COOKS/KITCHEN HELP
Pizza Bob's in Haleiwa is looking
for kitchen personnel. Experience
preferred, but will consider
training the right people. Apply
in person at 66-145 Kam. Hwy.

Raingutter installers wanted
Some experience working on
roof preferred. Good pay and
benefits for right person.
Work all over Island.
Please call 864-6601

**Retail Sales
Surf & Sea**
Hawaii's Ocean Sports Headquarters
is always looking for hard working,
energetic people to become a part
of our sales team. Good pay, bonus,
benefits. Ocean sports experience
and/or bilingual a plus. Apply in
person daily 9am-7pm
62-595 Kam. Hwy., Haleiwa

Farm seeking responsible
hard working individuals. Work
included but not limited to
harvest, prune, clean & prep
w/ flexible hours. Leave a mes-
sage. **Call 707-200-1375**

MODELS for Art Class
Any body type
2 - 30 min poses
2-3 hrs/one day/wk.
Begin Oct. 18
Reply: rudisart@gmail.com

Coaches Wanted
North Shore Canoe Club
seeking paddling coaches for
all levels for 2013 season.
Please send letter of intent
with experience to:
P.O. Box 416 Haleiwa, HI
96712
watergirl808@mac.com

FOR SALE
Crickets now available at
The Feed Trough
637-5600

MISCELLANEOUS
Ho'ola Like Waikiki Health
Center's North Shore
Clinic Queen Liliuokalani
Church 8:30am - 3:30pm,
Tuesday and Thursday

North Shore Farmers Markets
Haleiwa: 3 p.m. to 7 p.m. Thursdays, at
Waimea Valley, Pikake Pavillion & Lawn.
Waialua Sugar Mill: 8:30 a.m. to noon
Saturdays & Wednesdays 4:40 p.m.
to 7:00 p.m.
North Shore Country Market: 8 a.m. to
2 p.m. Saturdays, Sunset Beach Elemen-
tary School, 59-360 Kamehameha Hwy.

Keep it Country
To report **ILLEGAL VACATION RENTALS**
call 768-8159 or 768-8118
You will remain anonymous
Illegal Vacation Rentals
are ruining the North Shore
www.savenorthshoreneighborhoods.com

WAIALUA WRITERS
The Waialua Library writers
group meets at 11 a.m. on
the second Saturday of each
month at the library.
Call 637-8286.

IGREJA EVAN. BRASILEIRA
Domingos 10:00 am
Quartas 7:30 pm
Sextas-Culto de Oraçao 7:30 pm
Voce e o nosso
convidado especial
Behind Hale'iwa Post Office
637-5566
Pastor Luiz • 638-2212

Don't throw away that old BIKE!
Donate it to
Yikes Bikes
A non-profit program at Waialua
High & Intermediate School
637-8200
M-F • 8 a.m.-3 p.m.

FREE Senior Citizen Art Class
Jay Marr Art Gallery-Waialua
Last Tues. of the month
10 a.m. - 12 noon
supplies included - space limited
call 637-2562

OFF da ISLAND
Are you leaving Oahu on vacation or
business? Do you live on a neighbor
island, the mainland or foreign
country and subscribe to the North
Shore News? Try send us a photo of
someone in front of a sign or land-
mark holding a copy of the NSN.
Email your photo along with the
person or persons' name, community
of residence, telephone number and
photo location to: NShoreNews@
aol.com. Or, mail to OFF da ISLAND
Photo, North Shore News, P.O. Box
1117, Hale'iwa, HI 96712. We can-
not return photos so please send us
a copy. Photos received become the
property of NSN. Preference and pri-
ority will be given to emailed photos.

BEACH CLEAN UP
Chun's Reef - 10 a.m.
637-2211
Last Saturday of every month
adoptabeachhawaii.org

North Shore Community
BLOOD DRIVE
Saturday, Nov. 24, 8am-12 noon
Bloodmobile at
Virginia Abshier MD's office
66-214 Haleiwa Road
Bring a valid photo ID With birthdate.
Eat well and Drink plenty of fluids.

FIGURE DRAWING CLASS
JMarr's Gallery-Waialua
Thurs. 9-11:30
Begin Oct. 18
Info: rudisart@gmail.com
or 638-7749

BEGIN WATERCOLOR
Jay Marr Art Gallery-Waialua
Tues. Evenings 6:30-8:30
\$30/class includes all supplies
(go home with a painting!)
call 637-2562 for details



MALAMA MARKET HALEIWA:
OPEN DAILY 7 AM-9 PM
808.637.4520

MALAMA MARKET MAKAKILO:
OPEN DAILY 6 AM-10 PM
808.672.9955

Valid Dates:
10/31/12-11/6/12

Pineapple **79¢**
PER LB.



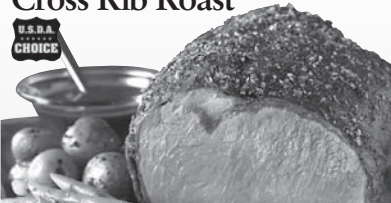
Pepsi
Selected Varieties,
12/12 oz. **3/\$12**



Stouffer's
Lean Cuisine
Entrée, Pizza,
or Panini **4/\$10**



choice Certified
Angus Beef®
Boneless
Cross Rib Roast **\$3.99**
PER LB.



Hinode
Calrose Rice **\$10.49**
White or Brown,
20 lb.



Aquafina
Water **2/\$9**
24/500 ml.



Extra Large
Shrimp **\$7.99**
26/30 ct.,
Previously Frozen



Spam
Luncheon Meat **4/\$10**
Selected Varieties,
12 oz.



French
Bread **\$2.29**
EACH



Cottonelle
Bath Tissue **\$7.99**
12 Double Rolls
or Scott
Mega Soft
Paper Towel
6 Rolls



Dreyer's
Ice Cream **2/\$7.50**
Selected Varieties,
48 oz.



Huli Huli* Chicken
Whole Roaster **\$7.99**
EACH
*Used with Permission

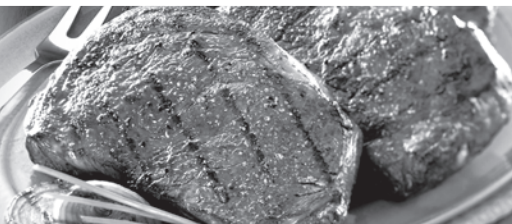


Corona or
Heineken **\$21.98**
18 Pk. Bottles
or Budweiser,
Bud Light, Coors,
Coors Light, Miller
or Miller Lite
30 Pk. Cans



THURSDAY

INCLUDES:
7-8 oz. Steak
Rice • Tossed Salad • Drink



Grilled Steak
LUNCH
\$6.99

Hawaii Beverage fee of 1¢ per can or bottle will be added to purchase price at checkout. An Additional Hawaii Deposit fee of 5¢ will be charged for all specially marked beverage containers.

Limit five units (mix/match) per purchase, unless otherwise specified. We reserve the right to limit quantities. No sales to dealers. Prices plus applicable state tax. Hawaii EBT cards welcomed.