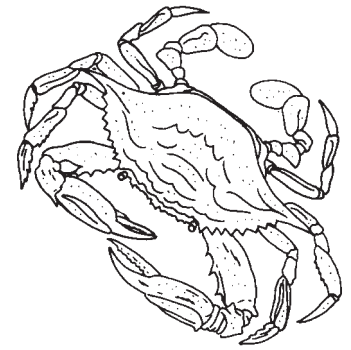




8th Annual Turtle Bay Seafood Festival

Page 3



NORTH SHORE NEWS October 3, 2012 VOLUME 29, NUMBER 19



Christian Bike Riders For Christ

The annual 2012 Toys for Tots Motorcycle Run in Loving memory of "Pastor Ron Valenciana" IF YOU RIDE A BIKE PLEASE JOIN US

Join us as we "Christian Bike Riders for Christ" ride in memory of Pastor Ron Valenciana. Last year Pastor Ron rode with us on his motorcycle on the annual Toys for Tots run in Honolulu. It was his first

and last ride. We all were blessed to ride with Pastor Ron and I will cherish that memory.

This years ride is on Sunday December 2nd 2012. We will meet at The Haleiwa Post Office

at 7 a.m. on December 2nd 2012. Please contact Mike Lyons or my self at 808-292-4292 or e-mail me at bhelemano@aol.com. God Bless.

Kahu Helemano

U.S. POSTAGE PAID STANDARD PRE-SORTED Honolulu, Hawaii Permit No. 1479 66-437 Kamehameha Hwy., Suite 210 Haleiwa, HI 96712

PROUDLY PUBLISHED IN Hale'iwa, Hawai'i The Surfing Capital of the World!



## OFF da Island in St. Petersburg, Russia

Last month part time residents of Laie, Michael and Cindy Lilly boarded a Holland America Baltic cruise ship leaving from Stockholm. En Route, Michael a former Hawaii Attorney General and Cindy an internationally renowned quilter and author of 10 quilting books stopped in St. Petersburg, Russia to take a photo at the St. Isaacs Cathedral. Luckily, amongst all the quilting books was a recent copy of the North Shore News which Cindy packed to remind her of the good times back on Oahu's beautiful North Shore. For more info o our OFF da Island photo campaign turn to page 23.

**Jameson's**  
*Relaxed sunset dining...*

Happy Hour  
Monday ~ Friday  
3 p.m. ~ 6 p.m.  
Bar & Bar Area

Lunch 11 a.m. to 4:30 p.m. • Dinner 4:30 p.m. to 9 p.m.  
Sunday Brunch 9 a.m.

*Jameson's by the Sea*  
*located on Oahu's Northshore*  
*at 62-540 Kam Hwy*

Info and Reservations  
808.637.4336

**We've Moved**  
66-037 Kam. Hwy., Ste. 3  
Haleiwa, next to Growing Keiki

**Saccoccio & Lopez**  
ATTORNEYS AT LAW  
*Serving Haleiwa since 1984*

*Bankruptcy  
Personal Injury • Criminal Law  
Landlord/Tenant  
Traffic Offenses • DUI*

**Family Law**  
*Adoption • Custody • Divorce  
Paternity • Guardianship  
Deeds, and Wills*

**637-7611**  
*VISA/MC Accepted*

*Paul & Nita*

**LIVE. EAT. PLAY. NORTH SHORE.**



**8TH ANNUAL SEAFOOD FESTIVAL** HAWAII'S SEAFOOD & FARM FRESH PRODUCE

A VARIETY OF ISLAND CHEFS FROM NORTH SHORE SHRIMP TRUCKS TO FINE DINING

**FRIDAY OCTOBER 5TH**

TASTE OF THE NORTH SHORE WITH SPECIAL GUEST ANUHEA AND A SPLASH OF KANIKAPILA

**SATURDAY OCTOBER 6TH**

CHEF UNDER THE STARS WITH THE HARMONIES OF HAPA

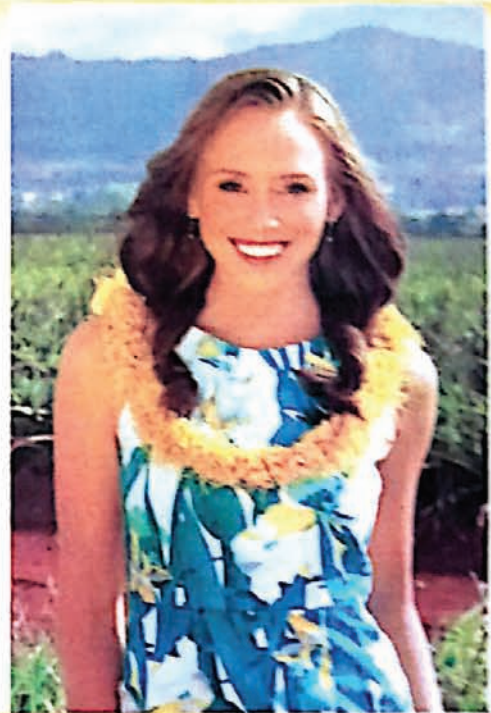


TURTLE BAY  
**SEAFOOD FEST**

OAHU'S FABLED NORTH SHORE

PURCHASE TICKETS ONLINE AT [TURTLEBAYRESORT.COM](http://TURTLEBAYRESORT.COM) - FOR MORE INFORMATION CALL 293-6000

*Aloha,  
I have served our state as Miss Hawai'i and I want to continue serving the community where I was born and raised. My grandfather worked at the Waialua Sugar Mill and I am the 4th generation from Petersons' Upland farm. I have deep roots in this area and I will be an advocate for you. I want to serve this district in which I am deeply connected to. I would love your support to represent our community. Mahalo!*



*Lauren Kealohilani Cheape*



**My grandparents, Doug and Carol, my father Michael, Uncle Paul and Aunt Allison at their house in Mokuleia.**



**My grandparents Suzanne and James Peterson, Great Uncle and Aunt Alan and Martha Peterson at Petersons' Upland Farm.**

**LAUREN KEALOHILANI**

**CHEAPE**

**FOR STATE HOUSE - WWW.LAURENCHEAPE.COM ®**

Paid for by Friends of Lauren Cheape - P.O. Box 893585 Mililani, HI 96789



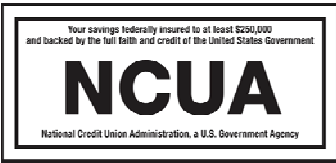
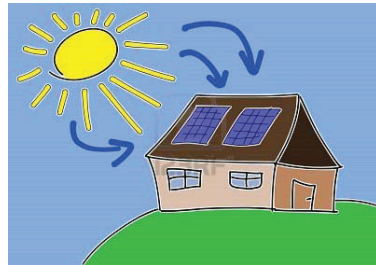
**WAIALUA**  
Federal Credit Union



**Looking to install Solar Photovoltaic?  
Consider a Home Equity Loan from Waiialua FCU.  
No closing costs and a low interest rate can help you on  
your way to lowering your electricity bill.**

**Current HELOC Rate is 3.75% APR\***

\*Annual Percentage Rate based on an index of 3.50% plus the monthly average of the 26 week Treasury Bill (Auction High) and may be adjusted annually each March. Please call for more details.



You are eligible to join if you live or work in Waiialua or Haleiwa.

Phone: 637-5980 Located in the Waiialua Shopping Center



**GREAT GRINDS SINCE 2003!**

Breakfast • Lunch • Dinner



We serve delicious, nutritious and healthful meals in a delightful open-air setting with views of the ocean! Fresh Ahi, Salads, Smoothies and Açai Berry Bowls are just some of our specialites.

**CALL-IN ORDERS: 638-8300**

[www.sharkscovegrill.com](http://www.sharkscovegrill.com)

**OPEN 8:30 A.M. - 8:30 P.M.**

**OCTOBER  
LUCKY PKB  
DRAW**



**HAPPY HALLOWEEN**

*Hurry & stop by to enter our lucky draw!*

First prize winner will receive a \$50 PKB gift certificate!

Second prize winner will receive a banana or blueberry cream pie!



*One entry per person per day.  
Drawing ends on October 30, 2012.*



**Council Chair**  
**Ernie Martin**  
**Serving You in District 2**

### Rail or BRT?

The early promise of Oahu's mass transit system was uncomplicated and easy to envision; rail would connect communities and the people who live in them to economic, social and recreational opportunities while decreasing our dependence on cars and the foreign oil that fuels them. It would concentrate growth in the transit corridor and reduce the pressure for development in rural Oahu. We are now as close as we have ever been to seeing that vision become a reality. Unfortunately, we have never been so divided on the technicalities of the dream. This in spite of the fact that we spent \$4.5 billion on imported oil last year and that Hawaii is the most oil-dependent state in the nation with the worst traffic congestion of any city in the country. For both rail supporters and opponents alike, no issue is as compelling as the system's ultimate price tag, and the longer we take to build it, the higher the price. The current court imposed work stoppage will cost us millions. While there are those who will keep fighting over how we got to this point, we should be more concerned over where we go from here. Contrary to opinions expressed by certain opponents of rail, Bus Rapid Transit or BRT is not an option if we expect to receive federal funds. We cannot "scrap rail" and propose putting buses on a fixed guideway instead without a disastrous consequence to the Full Funding Grant Agreement now under review in Washington. Following my meetings with members of our congressional delegation, Federal Transportation Administration officials and key House and Senate Committee leaders in Washington last week, it was evident that such a proposal would not only cost us our place in line for federal funding but it would also necessitate an entirely new Environ-

mental Impact Statement, not just a supplemental review, since a BRT project is dramatically different than an elevated fixed guideway system. Even a proposal to simply put buses on an elevated structure would necessitate a supplemental EIS because a BRT system and a rail system are two different projects. This would take 14 to 18 months at a minimum and possibly longer. To suggest that buses on a guideway can quickly be substituted for rail vehicles is misleading. Even the elevated structure and transit stations would need to be redesigned to accommodate buses instead of rail cars, resulting in wider platforms that would magnify the visual impact of the guideway. To top it off, we would need to forfeit those federal funds that were designated for a rail transit project and not a bus rapid transit project. It is high time we accept the difference and stop clouding the debate.

**Next Issue - Oct. 17, 2012**  
**Deadline Date-Oct. 4, 2012**



Fresh pizzas, subs, pasta & salad

**Jerry's Pizza**  
**637-8866**

Open 7 days a week  
 7 a.m. – 9 p.m.

Located in beautiful downtown Waialua  
 at the Waialua Shopping Center.  
[jerryspizzamill@gmail.com](mailto:jerryspizzamill@gmail.com)

### *"Self Exploration Through a Partnership with Horses!"*

This LIFE coaching workshop will help you find **BALANCE, HEALING, and DIRECTION** in your life and will focus on personal growth. Horses become the teachers by showing us healthy communication, understanding, appropriate boundaries, patience, and resilience.

Presented by Hawai'i Equine Assisted Reflection & Therapy at Sunset Ranch. EAGALA certified professionals, no horse experience necessary, safe, and FUN!

**For more information:**  
**(808) 561-4184**  
[www.HeartHorses.com](http://www.HeartHorses.com)





### A Message From State Representative Gil Riviere

Many North Shore residents are stunned by the size of the new windmills and wonder if large wind farms is the best way to generate renewable energy. Since Governor Lingle helped launch the Hawaii Clean Energy Initiative in 2008, our state has been committed to achieving 70 percent of its energy needs by the year 2030. How we get there remains a challenge.

Now, the Federal Department of Energy and the State of Hawaii have begun a Programmatic Environmental Impact Statement to formally study the diverse renewable energy opportunities throughout Hawaii. The Hawaii Clean Energy PEIS will analyze energy efficiency, localized renewable generation, centralized renewable generation, alternative fuels and electrical distribution. Details are at Hawaii-CleanEnergyPEIS.com

This PEIS is an expansion of the Big Wind study that was begun in 2010 to look into the feasibility of placing windmills on Lanai and Molokai and delivering electricity to Oahu through an undersea cable. I have been a strong opponent of the Big Wind and inter-island cable project because of exorbitant costs, uncertain benefits, and vehement opposition from the residents of Lanai and Molokai.

Impressively, more than a dozen residents of Lanai and Molokai attended the initial public meeting on September 11th at McKinley High School to testify against placing windmills on their islands so that energy could be exported to Oahu. They wanted to leave no doubt of their opposition to Big Wind and they wanted assurances that this PEIS is not just a front to justify a pre-determined outcome.

Our state is blessed with many great renewable energy sources and we need to consider all our options as we move forward on reducing our energy dependence on oil. Solar, wind, ocean energy, ocean thermal, geo-thermal, bio-fuels and other sources can each play a part. Indeed, there will not be a single solution.

The paradigm of one utility company controlling all electricity generation and distribution is changing. We see more and more small and medium sized renewable energy systems popping up around the state. The challenge is how to produce enough clean, renewable energy in reliable quantity, and deliver it to where it is needed.

It is my great hope that we can move towards a renewable energy future that no longer requires monopolistic generation and distribution. Let's hope the Hawaii Clean Energy PEIS points us in the direc-

tion of true energy independence from imported oil with cheaper, diversified energy generation.

There are a number of ways to contact our office. Please visit Room 319 at the State Capitol, call 586-6380, fax 586-6381 or email RepRiviere@capitol.hawaii.gov. We also post reference and district information online at GilRiviere.Info

## Dole Plantation Family Fun Day Cancelled

-- originally announced for Oct. 20, event now cancelled due to Karsten Thot Bridge traffic issues --

Wahiawa, HI—Dole Plantation regrets to announce that the Family Fun Day, originally planned for Saturday, Oct. 20, will be cancelled due to unexpected traffic issues related to repairs on the Karsten Thot Bridge.

"After much consideration, we determined that this would be in the best interest of the community," explains Mike Moon, Dole Plantation director of operations. "Family Fun Day traditionally draws large numbers of people to Wahiawa from all across the island; for the safety of families traveling to and from Dole Plantation, we felt it most prudent to cancel the event this fall."

Dole Plantation hopes to hold the Family Fun Day in September or October of 2013.

➡ ➡ ➡ ➡ ➡ ➡ ➡ ➡ ➡ ➡ ➡

↑ Visit PKB and enjoy our celebrated SNOW PUFFY & SADA'S MALASSADA "Da Best" ↓



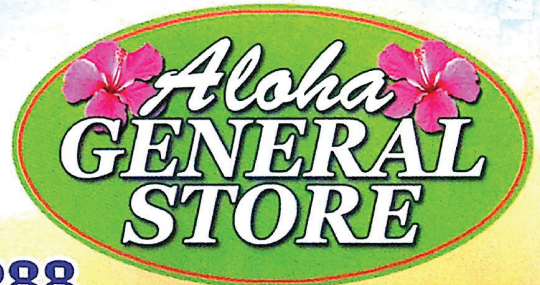
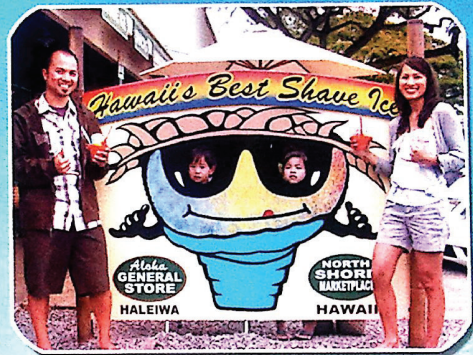

↑ Located at 66-945 Kaukonahua Rd in Waialua Right next to Paalaa Kai Mini-Mart Call (808) 637-9795 if you need help finding us! ↓

➡ ➡ ➡ ➡ ➡ ➡ ➡ ➡ ➡ ➡ ➡

# Hawaiian Gifts • Aloha Wear • Sundries • Jewelry

Buy 1  
Shave Ice  
and get the  
2nd **50% OFF!**  
with this  
coupon

Hawaii's **BEST**  
**SHAVE ICE!**



**(808)-637-2288**

**North Shore Market Place**



- Dedicated to Keeping the Country for Country People
  - Invested in our Windward and North Shore Communities
  - An Advocate for a Diverse, Flourishing Economy
- www.richardfale.com**

Paid for by Friends of Richard Fale  
P.O. Box 316 Hau'ula, HI 96717



**Professional  
Tattoo  
&  
Body Piercing  
Studio**

Located in the  
Waialua Shopping Center  
Near the  
Old Sugar Mill

**808-312-3444**

Custom Designs • Re-Do's • Cover-Ups • Free Consultation  
**oahutatooink.com**

## The Hale'iwa Family Dental Center, Ltd.



presents

### "Comfort Dentistry" including—

- Relaxation Glasses
- Television Glasses
- Caring Staff
- Special Medication to help you relax
- Laser Cavity Detection
- New Patients Welcome!

Your teeth are much too important to neglect.

**Call: 637-9652**  
for your reservation

We're conveniently located behind First Hawaiian Bank  
in the heart of Hale'iwa.





# HAUNTED LAGOON

## DREAMS & NIGHTMARES

JOURNEY THROUGH THE MAD MIND OF THE LAIE LADY ON HAWAII'S FAVORITE HALLOWEEN RIDE. ANNUAL PASS HOLDERS GET A FREE CANOE RIDE EVERY MONDAY, WEDNESDAY AND FRIDAY. LESS SCARY KEIKI RIDES AVAILABLE.

### YOU'LL NEVER FALL ASLEEP AGAIN.

#### CANOE RIDES

- EVERY MONDAY, WEDNESDAY, FRIDAY & SATURDAY  
\* OPEN EVERY DAY EXCEPT SUNDAY FROM OCTOBER 22-31ST
- RIDES BEGIN AT 6:30 PM (CLOSED ON SUNDAYS)

#### TICKETS

- ONLINE PURCHASES HIGHLY RECOMMENDED
- SEATS MAY SELL OUT / BOOK ONLINE NOW
- KEIKI RIDES AVAILABLE UNTIL 7:30 PM



HAUNTEDLAGOON.COM  
(808) 293-3333






**\*\*WINTER IS HERE\*\***

Nightly Music is Back  
Serving Late Night Food Menu  
Karaoke Tuesdays  
80's Dance Party Saturdays

**\*\*Live Bands Starting Soon  
On Fridays\*\***

Come Join the fun at  
**Breakers Restaurant  
& Bar**

66-250 Kamehameha Hwy  
Hale'iwa, HI 96712  
637-9898

## North Shore Outdoor Circle Harvest Moon Dance

Waimea Valley Pavilion  
Saturday, October 27, 8:00 - 11:00 p.m.



Rock to the Sounds of  
**THE STRANGERS**  
featuring Joe Green

A limited number of advance  
sale tickets for \$15.00  
available at  
Kai Ku Hale - ph. 636-2244  
and Surf n Sea - ph. 637-9887

\$20.00 at the door/21 and older  
nsoc@hawaii.rr.com



## Country Talk Story with Choon James

### Refinancing your mortgages

When we graduated from college, the interest rate was hovering around 14%. When it dropped to 10%, we were so happy. And then it dropped to 8%, we were elated! Back then, we could not imagine that interest rates would drop to about 3.5%.

Many people who attempt to refinance their homes are finding out that lenders have become very strict. Common sense tells us that if a homeowner has been steady with their 6.75% mortgage payments, they should be able to continue payments half that!

I wish something could be done to correct this nonsense. But we know why lenders are behaving this way, right? Which lender wants their profits decreased from a 6.75% loan to a 3.5% loan?

Here are a few tips for refinancing:

1. Look at the remaining years of your existing mortgage. If you have only a few years left, there is no sense getting a new 30 or 15 years mortgage. The ideal is to get a free and clear home as soon as you can. One thing we know, the basic costs of living like electricity, water, insurances, sewer will keep going up. Striving towards a free and clear home is a worthy goal for security and peace.

2. If you are refinancing with your children, remember that every name on the mortgage has a legal ownership to the subject property. If you include two names, the same two names must agree to all future decisions, like selling the property. If your name is no longer on title, you are no longer the owner; you have no legal say. We see many cases where parents allow their children to refinance, only to find out they have lost all control of the house.

3. Always choose a fixed mortgage, unless you have a deep pocket to cushion future increased payments. We don't know how future circumstances will affect the financial sectors. A new mortgage fixed at this low rate for the next 15 or 30 years will not produce surprises. Part of the 2008 sub-prime crisis grew from millions of borrowers defaulting on their Adjustable Rate Mortgages (ARM).

I know some financial experts promote leveraging other people's money by borrowing. Mark Zuckerberg, the billionaire Facebook owner, took a mortgage out on his new home recently. But most of us don't have that many zeros in our accounts. Let's do it the provident way. A mortgage is a necessary debt for many. Today's low interest rates behoove us to review what positive opportunities are available.

Choon James has been a real estate broker for over twenty years. She hosts Country Talk Story for Olelo Community Television. Country Talk Story airs every Saturday at 5:00 pm Channel 52. She can be reached at 808 293 9111 ChoonJamesHawaii@gmail.com

## Letters to the Editor

*We would like to address the September 19th Letter to the Editor from Ms. Bolles as to the proposed Haleiwa Hotel site. Please see information below from our architect. Andy Anderson*

Flood hazard design criteria for all of the Hawaiian Islands coastal property is governed by federal design standards. The Federal Emergency Management Agency, FEMA, est. 1979, is the lead agency and their Flood Insurance Rate Maps (FIRM) provide this design criteria in the form of specific flood height elevations, flood velocities of the moving water, frequency of occurrence estimations, and a detailed host of specific, site by site requirements required to provide proper public safety. Honolulu DPP rigorously checks compliance with these detailed engineering public safety standards before issuing any construction permits.

The original Haleiwa Hotel design is constructed on a raised pedestal which varies from 4 to 6 feet above the ground (see old photos). This base pedestal was constructed of poured in place concrete and had large openings - shallow arches covered by an open lattice of thin boards with landscape planting in front. These arched openings allowed greater than 50% of the total building perimeter to remain open to water flow while the main floor level was protected above. All that needs to be done for this original 1890's design to comply with current federal and state public safety codes/laws is to set the floor elevation at or above the FIRM flood elevation.

As proposed the first floor hotel elevation would need to be at or above AE Flood Elevation 10. The existing ground elevation where the hotel is proposed is about elev. 7 to 8. So if the original 1890's hotel design were placed at that location the first floor elevation would be at 7 plus 5 (average base pedestal height from original - see historic photos) which would place the first floor elevation at elevation 12. This is 2 feet above the federal public safety standards and is re-constructing replica per the original design.

The conclusion is that the original 1890's architect and contractor did a good job, and that this old design is still valuable and worthy in its original design. No stilts required here.

Were this design to be located at Puaena Point, the FIRM map gives us a VE (high velocity water) 18. This is same as makai part of Chun's and a good part of Sunset Beach, and most all of the North Shore residences on the ocean are VE 20, VE22. The existing ground at Puaena Pt is a bit higher at elev. 10 to 12 so the old design would need another foot or two of height or raise the building pad 2 ft.

This is probably too deep for the above, but the recent tsunami at Japan and Indonesia events were in a much more geologically active part of the world. A catastrophic event like those two will not occur in Hawaiian waters - we need only design for the distant effects and our new FEMA updates in 2009 take that all into account.

Another point - if a good size tsunami came to Hawaii, it would impact the total island chain. In our case, the Kulima (Turtle Bay) would be hit harder than Jameson's and about the same as Puaena Pt. With its poured concrete pedestal-arched base, the hotel would remain standing when all the ocean front houses would be gone.

Joe Lancor

# Camp Erdman – Helping North Shore Locals in Need

At a time when family budgets are being stretched, parents are often forced to make difficult decisions about what activities they can afford for their children. Fortunately there are many organizations that are ready to help parents with free programs or scholarships for programs. A simple Google search finds many such organizations on the North Shore, one option is YMCA Camp Erdman.

Nestled between the foothills of the Waianae Mountains and the ocean, Camp Erdman is a 27-acre summer camp. YMCA Camp Erdman serves tens of thousands of children annually through its summer camp and outdoor education programs. As a YMCA, Camp Erdman is committed to ensuring camp is available to all, regardless of their ability to pay. Every year a dedicated team of volunteers work hard in Camp Erdman's Annual Support Campaign. These volunteers collect donations from local businesses' and individuals to raise funds. These funds enable Camp to scholarship participants for summer camp, school programs and even family programs. This year Camp Erdman raised over \$100,000 to use for scholarships for its programs.

For many of us camp holds fond memories from our childhood, memories of running, playing, swimming and of course s'mores around the campfire. But camp is more than just fun and great memories, Camp is a great experience for kids where they can make new friends, develop self-esteem and learn new skills.

Camp is a wonderful experience for kids and a special place where families can bond. With summer over you think camp is over for the year, but at Camp Erdman, whenever school is out, camp is in! Camp Erdman has several upcoming programs including a Fall-O-Ween Family camp and two winter break camps. Camp Erdman offers scholarships for these programs to local families in need. Check out their website – [www.CampErdman.net](http://www.CampErdman.net) for more information.

So parents, get out there and hunt around for great opportunities for your kids, and always ask about kama'aina discounts, scholarships and free programs!



**Free Family Movie Night  
at Waialua Community  
Association**



**Seven Days  
in Utopia**

Fun for the whole family!

**Friday, October 19 at 7 p.m.**

**FREE ADMISSION**

Drinks & Popcorn for sale



Co-sponsored by: New Hope Haleiwa, Wallace  
Theatres Management Corp. and WCA.  
For more information, call 637-4606  
[www.WaialuaCommunityAssociation.org](http://www.WaialuaCommunityAssociation.org)

## US Marine Forces Pacific Band

Sunday,

October 7, 2012

4:00 p.m. - 5:30 p.m.

Waialua Bandstand  
in the park

[www.waialuabandstand.com](http://www.waialuabandstand.com)



## Olakino Maika'i

(Good Health)

by Naty Camit Hopewell

### Many Uses of Birth Control Pills: Part II

The previous article dealt with the use of birth control pills (BCP) in treating acne and excessive menstrual flow. This article discusses use of BCPs in the treatment of amenorrhea, endometriosis and polycystic ovaries.

Amenorrhea means no or infrequent menstrual flow. Due to hormonal imbalance, a woman can skip 4 or 5 months, sometimes more. Is this a bad thing? Women, who have less than 4 periods per year, have a higher risk of developing uterine cancer later in life. To prevent this, women are treated with BCPs to induce a period at least quarterly. Most women prefer to have monthly cycles.

Another condition is endometriosis, a condition where cells from the lining of the uterus (endometrium) grow outside the uterus. These endometrial-like cells, growing in the abdominal cavity, respond to hormonal changes like cells in the uterus. Consequently, when there is increased blood flow to the endometrial cells (in preparation for a pregnancy), this occurs outside the uterus causing inflammation in the abdominal cavity resulting in pelvic pain. This pain worsens with menstruation. BCPs taken regularly prevent ovulation. No ovulation prevents increased blood flow and the resulting inflammation.

The third condition is polycystic ovaries (PCO). In this condition, the ovaries are stimulated to produce excessive male hormones, particularly testosterone. This results in multiple "cysts" on the ovaries, which are really immature follicles. (Mature follicles release the eggs during ovulation.) This messed up hormonal balance results in no ovulation, no periods, and a female with some male characteristics, such as being heavier and having more body hair. The use of BCPs counter the excessive male hormones, prevent the development of the "cysts" and help maintain a regular menstrual cycle.



## Hawai'i Polo Club to host team from China

On October 7 the Hawai'i Polo Club is presenting a post-season exhibition polo match, pitting a visiting team from China against the "USA Hawai'i" team.

A four-man team from the Nine Dragon Hills Polo Club, located just outside of Shanghai, will visit Hawai'i for the match and will be joined by one of the most prestigious Chinese players of Malaysia, Chevy Beh.

The USA Hawai'i team will include the up-and-coming polo player, Noelani Picolo, a fifteen year old North Shore resident. Polo is one of the few sports allowing men and women to compete together, with only skill level as the criterion.

The China-USA Hawai'i match is officially sanctioned as an international match by the United States Polo Association. Post event ceremonies will include the presentation of a special trophy created for this match.

Polo was brought from Persia, where it originated, to China in the 5th Century B.C. It became a popular royal pastime for many centuries. The polo stick appears on royal coats of arms in China and the game was part of the court life in the golden age of Chinese classical culture under MingHuang, "the Radiant Emperor," who was an enthusiastic patron of equestrian activities during the Tang Dynasty.

Michael Dailey, owner of the Hawai'i Polo Club, said: "This is a great opportunity to see world class players who come from a country with a polo tradition dating back to the 5th Century B.C."

Gates open at 11:30 a.m. for tailgating at the polo field in Mokuleia and admission is \$10. Picnics are encouraged; and food trucks will be on site. Matches begin at 2:00 p.m. and end at 5:00 p.m., followed by a live band.

Call Event Attainment at 343-4788 for more information.

### North Shore Food Bank

You can help feed the North Shore's homeless & hungry by donating non-perishable canned foods to the North Shore Food Bank located in the North Shore News Office above the Hale'iwa Post Office.

**637-3138**

Prefer to contribute financially?

Check can be made out to:

Once A Month Church

P.O. Box 117, Hale'iwa, HI 96712

#### TOP 5 MOST NEEDED ITEMS

- Financial Contributions
- Canned meats or tuna
- Canned meats & soups
- Canned vegetables & fruits
- Canned beans

*No donation is too small.*

501c3 non-profit



# WAI'ALUA COMMUNITY ASSOC. GOING GREEN DAY!

## Saturday, October 6, 2012

### 9:00 AM-1:00 PM—66-434 Kamehameha Hwy

Please save your recyclable waste for this date and help turn trash into cash for community programs. Please bring canned goods to support the Hawaii Food Bank.

#### Acceptable Items:

- Scrap metal, bicycles, appliances
- Propane tanks, fire extinguishers— 3 max.
- Computers, printers, scanners, no limit
- 1 TV per car
- HI-5 beverage containers
- Used Cooking oil
- Cell phones, printer cartridges, PDAs, etc.
- Batteries, all kinds
- Plastic playground equipment, helmets
- Cardboard-corrugated, newspaper
- Plastic bags
- Usable clothing and household items
- Used eye glasses and hearing aids
- Incandescent light bulbs exchange for CFLs
- Prom dresses, business suits
- Pet food, towels, blankets
- White socks for Afghanistan
- Free towing of unwanted cars, call 291-6151



**SORRY, WE CANNOT ACCEPT: TIRES, PAINT, MICROWAVE OVENS, MOTOR OIL, HAZARDOUS FLUIDS**

For curbside pick-up, please call WCA @ 637-4606

“Going Green is Great!” - [renemansho@hawaii.rr.com](mailto:renemansho@hawaii.rr.com) / ph: 291-6151

Mahalo to Congresswoman Mazie Hirono, Governor Neil Abercrombie, Senator Donovan Dela Cruz, Rep. Gil Riviere, Mayor Peter Carlisle, and City Council Chair Ernie Martin!

# “E Malama i Na Opiopio ma: Project begins”

Ka AHa Hui Na`auao is proud to announce that our organization just received a \$34,000.00 grant from The Office of Hawaiian Affairs.

Funding was granted for a free community youth project that began on September 1, 2012 and will continue until September 1, 2013. Classes are held every Saturday from 9am to 12 noon in Waimea Valley.

Our new project entitled E Malama i na Opiopio ma, is a youth project based on Traditional Knowledge concepts of cultural awareness, spiritual guidance and mentorship.

The Free project is specifically designed for at risk youth and other community youth members. Working in partnership with The Family Court Juvenile Specialized Services Section and the Waianae Boys and Girls club, this unique project will teach traditional values of respect and hands on learning from cultural practitioners who specialize in making traditional cultural artifacts and items used in ancient Hawaiian culture. Juvenile community members who wish to participate can register through the Waianae boys and girls club (transportation will be provided in most cases through pickup and drop off points). For enrollment in free classes please contact Lkeama@bgch.com

Where: Waimea Valley  
When: Every Saturday 9am to 12 noon  
What: Free Traditional Knowledge project  
Contact: Kahu Helemano bhelemano@aol.com

## Save Sea Turtles Use Reusable Bags www.b-e-a-c-h.org

### GOT GREAT HAIR ? NORTH SHORE HAIR 808-738-2201

20+ years experience



ASK FOR DEVRA  
Color Specialist

Eyelash extensions, full set special \$100

Full highlights & Haircut including shampoo, blow-dry & style special \$100\*

\* longer hair may be extra \*expires 10/20/12

Worked in London, New York City & Beverly Hills, CA.

## Oceanside Chapel Service at Turtle Bay Resort



Every Sunday at 9 a.m. in the beautiful oceanside wedding pavilion.

- Non-denominational 45 min. service
- Traditional & Contemporary music
  - 15 minute sermon
- All are welcome! Free validated parking

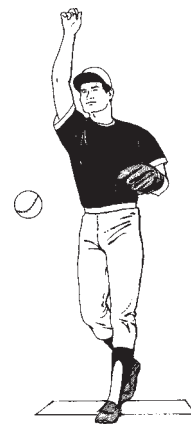
Hosted by Pastor Kurt Kamikawa  
808-358-6066  
Pastor Bob Major 808-681-8889

\*When church is pau,  
enjoy dining at the Palm Terrace,  
Hang Ten Pool Bar, or Lei Leis.



4th annual Young Guns ASA Slow Pitch Softball League is now forming for the new season. This is a great opportunity for the people of the community to become acquainted with each other no matter your gender. All players must be 18 or over to play if interested in joining this league or for general info please contact

Gavin Nakamura  
649-9548



## OCTOBER IS . . . Pastor's Appreciation Month

It's an opportunity for the sheep to give back to the shepherd.



# Surf Newz by Ace Cool

Howzit North Shore! Ka-Boom! Two/Thirds of the way into September and the North Shore Oahu Winter Surf Season of 2012 started off like a Volcanic Eruption on the south side of Mauna Kea on the Big Island! We did have some head-high plus days in early and mid-September, but those waves were nothing like the unruly beasts crashing along the shoreline from Mokuleia to Kahuku during that last week of September! The North Shore Swell Indicator Buoys started popping into the 10 foot plus category late on Thursday, September 20th! By Friday, September 21st...the swell was already rapidly on the rise by mid-afternoon. The swell continued to get bigger on Saturday, September 22nd and then Sunday the 23rd turned out to be the FIRST REALLY BIG DAY of this new Surf Season which includes the always dramatic change when the Northern Pacific Ocean has an official switch from a "La Nina" to an "El Nino" weather pattern. The incoming "El Nino" pattern always produces much bigger surf than a "La Nina". The presence of the new "El Nino" was pretty obvious as the first macker waves of the new swell started washing onto the North Shore. This Big, Funky Ocean Surge was in the 10-12 Plus Range (Hawaiian Scale) and very sloppy, mushy and a dark shade of greenish-brown in color! The NOAA Weather Service was calling it 15-20 feet and it did have some real Hawaiian Punch! The Outer Reefs in the Haleiwa-Waiialua Area looked pretty closed out and messy with "Brown Water" Conditions and lots of undertow and swirling "flotsam and jetsam" everywhere! This First Big Swell of the year peaked on Saturday-Sunday, the 22-23 of September. By Monday morning of the 24th of September, the swell was dropping slowly but cleaning up quite a bit! After this first real Booming "Big Wave Episode"... the surf was expected to go back to nearly flat conditions by the middle of the last week of September. Then another swell was expected to start rising again the following

Friday the 28th and go into the "double-overhead plus" range again for the weekend of September 29-30! So by the time you pick up this North Shore News, we will have had two Solid 10 Foot Plus Swells and it will only be the first week of October 2012. Trick or Treat!

Randy Rarick is retiring as long-time Executive Director of the Annual "VANS Triple Crown of Surfing". This milestone year of 2012 will be his last as the Admiral of the "VANS Triple Crown". Starting in 2013 he will kick-back to take on a "legendary" advisory position in the game. Newcomers like Sean Wingate and Marty Thomas will be taking the reigns in 2013. Other legendary long-time staff members of the "VANS Triple Crown of Surfing" will also be stepping aside to let the younger crew take the wheel. Head Judge Jack Shipley, Announcer Skil Johnson, Beach Marshall Rabbit Kekai and even Score Tabulator Faith Wentzl will become a part of the long and awesome history of the North Shore of Oahu's "VANS Triple Crown of Surfing", which includes the "Reef Hawaiian Pro" at Haleiwa, the "VANS World Cup of Surfing" at Sunset and the infamous "Billabong Pipeline Masters" at Pipeline. The Pipe Masters is one of the longest running Pro Surf Contests on Planet Earth! The PIPELINE MASTERS ALWAYS DELIVERS THE DYNAMITE ACTION, GNARLY TUBE-RIDES, SICK BARRELLS AND MASSIVE CROWDS that make the North Shore the epicenter of Pro Surfing! Stay Tuned Sports Fans! Aloha...Ace Cool!

## American Savings Bank EQUITY EXPRESS<sup>SM</sup> Home Equity Line

- Consolidate debt
- Kitchen remodel
- Kids' tuition

Do almost anything with the equity in your home. For more information and to apply, visit our Haleiwa branch or call 541-8322.



Member FDIC

asbhawaii.com



AMERICAN Savings Bank

### SIX SPECIAL NIGHTS

**MONDAY**  
**\$2.95 BEER**  
BOTTLES & DRAFT

**TUESDAY**  
**\$5.00 OFF PIZZA**  
REGULAR OR LARGE

**WEDNESDAY**  
**SALAD NIGHT**  
1/2 OFF SALADS

**THURSDAY**  
**\$3.95 NIGHT**  
\$3.95 SLICES,  
SALADS, MAI TAI'S,  
WINE & BEER



**SATURDAY**  
**\$4.50 NIGHT**  
\$4.50 SLICES,  
SALADS, MAI TAI'S,  
WINE & BEER

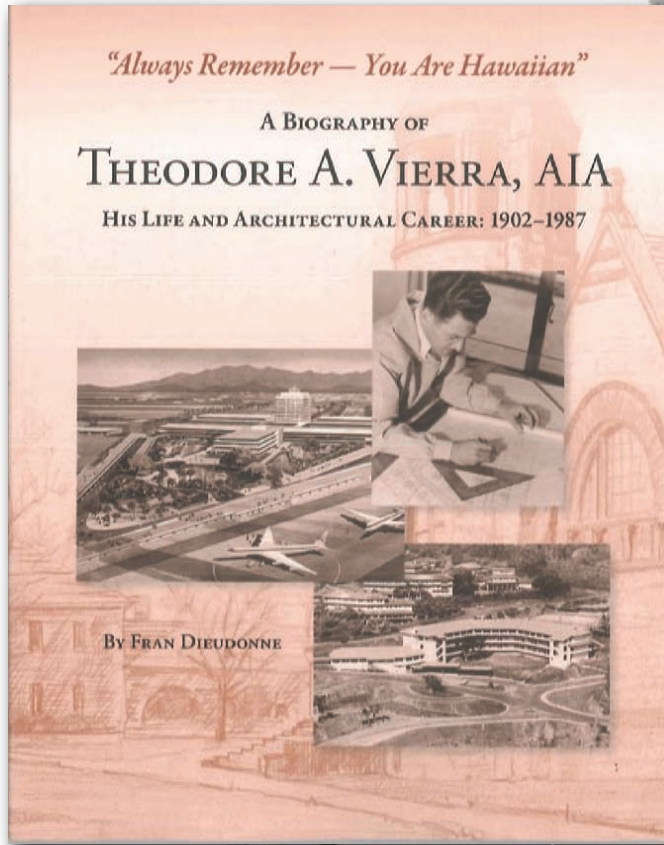
**FRIDAY NIGHT \$7.50 BURGER & FRIES**

Dine In Only - 4:00 PM Until Closing - Haleiwa Shopping Plaza - 637-5095

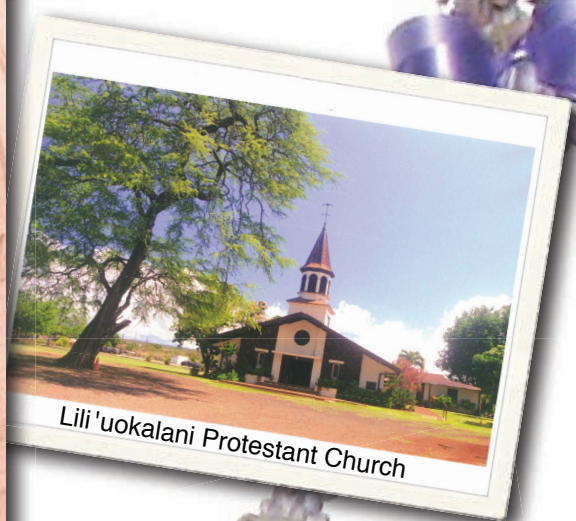
**PLUS \$2.00 Off with this Coupon**

Some Restrictions Apply. See Restaurant for Details.  
When Ordering Regular Priced Items. Good Anytime. One Coupon Per Person.  
Can Not Be Combined with Other Discounts. Expires 12/31/2012.

North Shore Chamber of Commerce's Historic Preservation Committee presents



An illustrated  
talk by  
*Fran Dieudonne*



SAVE THE DATE

DATE: Tuesday, October 16, 2012

WHERE: Lili 'uokalani Protestant Church  
(designed by Theodore Vierra, AIA)  
66-090 Kamehameha Hwy  
Hale'iwa, O'ahu, Hawai'i 96712

TIME: 7pm to 9pm

FREE  
(Suggested donation: \$5.00)

For more information, please call 808-637-4558

[www.GoNorthShore.org](http://www.GoNorthShore.org)



Hosted by Lili 'uokalani Protestant Church.





# BANZAI NORTH SHORE WIRELESS

The North Shore is buzzing with excitement of the first solid surf swell and the hope that young John John Florence gives the top guns a run for their money on the ASP World Tour. The season finishes up at Pipeline and lets hope he is at the top and in position with a chance to win the title!

The Vans Triple Crown of Surfing season is right around the corner starting November 12th at Haleiwa. They are launching the 30th anniversary web-site soon. Yes, 30 years of the best surfing on the planet, congratulations Vans and crew. Get ready for the menehunes first. The 36th annual Friends of Ali'i Beach North Shore Menehune competition officially kicks off the contest season October 20th. Get your entries in fast! Sponsors please email Ivy at ivykaui@live.com. Lets support our kid surfers! Good luck Keiki! This event has launched many a career and you know there will be some scouts checking it out, surfing pros get younger and younger.

In the meantime there have been a few more races to keep us North Shore action junkies on hold. An interesting race took place at Chinaman's Hat recently, The Mokoli'i Paddle Classic. Our own Mike Takahashi took the Co-Director position and helped the ATRC, Assistive Technology Resource Center organization, put on a great show. Mokoli'i is a 12.5 acre island about 1/3 of a mile offshore at Kaneohe Bay. It is a great location with a smooth area inside and some rough seas outside. The day the race went it was relatively mellow with a few runners on the way in and faster for the prone paddlers. Outside there was backwash off the island making it interesting. The fastest guy in was Bert Charlton from Ewa Beach who also won at Turtle Bay Resort of late. His time was 25:15:2. Aaron Ungerleider was not far behind at 25:27:5. So the prone paddlers took the approximately 3 mile race with Stand Up paddler Noa Ginella first in at 26:10:0.

Ginella has been killing it in the stand up divisions all over the place. He recently won a down stream race in cold Vail, Colorado, the Teva Mountain Games, also a win at the Duke's Oceanfest and a Kahala race. Ginella grew up at Kawela Bay, a full water rat with hunting and diving skills. He took up SUP surfing at 13 and has been on a roll. He has some great sponsors to keep him on track, Hurley, Keanon, Xcel, C-4 and more. You'll

also see him in some Crazy Shirts adds soon! Representing our North Shore well!

In that same race Kim Celebre was the first Women in. Her time 34:46:8, a great showing. See her in action at the site, [www.mokoliirace.com](http://www.mokoliirace.com). Thanks to Aloha Friday Beverage for the great healthy drinks!

The Hawaii Polo Club finished it's season with a bang. The last day saw over 3000 people in attendance including the Mayor of Honolulu Peter Carlisle who threw out a game ball. Great finishing day with lots of North Shoreites in attendance. Congrats on a great season.

The You Surf Channel is launching with our own Rocky Cannon at the helm announcing video segments with Kaipo Guerrero. This is an interactive channel on digital 250. It has surf reports, games, video and more. Worth checking out.

Aloha until next time.... see you in the tube! Banzai [www.banzaibetty.com](http://www.banzaibetty.com)



Noa Ginella. Photographer: Larry Haynes



# Waialua - The Saga of the North Shore

## Chapter 18 - Makaioulu

By Kalewa

With the execution of the Waialua kahuna and advisor Kaopulupulu in late 1782, the Mo'i or ruler of O'ahu, Kahahana, foolishly and cruelly played into the hand of his uncle, Kahekili, the warlord of Maui and his high-priest Kaleo-puupuu. They snickered "The end post of the domain of O'ahu has fallen, so let us take over the rule as we desire".

With the conclusion of the Makahiki of early 1783, Kahekili recalled his troops from Hilo, where they had been contributing to the political disruption on Hawai'i Island following the death of Kalaniopu'u. Kahekili assembled his forces at Lahaina, proceeded to Molokai and landed his army at Waikiki.

While Kahahana was scrambling to assemble defensive lines in upper Nuuanu Valley, eight warriors from Ewa and Waialua took matters into their own hands. The names of these heroes were Pupuka, Makaioulu, Puakea, Pinau, Kalaeone, Pahua, Kauhi, and Kapukoa. (Alas, the legends do not tell us which of the eight were from Waialua).

With the Maui army encamped around the Apuakehau Heiau in Waikiki, preparing for the march inland to fight Kahahana, the eight charged boldly in to the enemy and took on several hundred of the Mauians. Using long spears, short spears, javelins, and multiple hand weapons, they killed or wounded a prodigious number of the invaders. The eight were already making a retreat, unwounded, when they encountered a wall of spears in the hands of another contingent of Maui soldiers who had just arrived on the scene. Running towards the flank behind his fellows, Makaioulu fell behind. Being a short fat man with bowed legs and not much of a runner, he was overtaken, tripped and restrained by a muscular Maui high-chief named Kauhikoakoa, who tried but failed to stab him in the neck. Instead he grabbed chubby warrior in a bear hug and began to tow him towards the heiau. The clear intention was to make him the first sacrifice of the upcoming war.

This event was unfolding on the bank of the Punaluu taro patch, near the Kuakuaaka coconut grove near what is now the Alawai Canal. Makaioulu, finding himself in the strong arms of his captor, called to his friend Pupuka to throw his spear

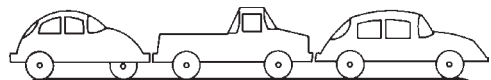


directly at his navel.

Knowing a quick death to be preferable to the torture his friend could expect at the heiau after such a fight, Pupuka threw his spear hard and straight as requested. Seeing the shaft flying his way, Makaioulu violently tossed his weight to one side, exposing the abdomen of his captor to the full thrust of the flying weapon. Now wounded, Kauhikoakoa loosened his grip, allowing Makaioulu to grab the shaft and push it through the back of the Maui chief.

Seeing their leader fall, the Mauians desisted from further pursuit, allowing the eight Ewa and Waialua Champions to escape...for the time being.

### CAR WASH !



Starting at \$5

Saturday, October 13, 2012

8am to 1pm

Waialua Community Assoc. in Hale'iwa

Proceeds to benefit the North Shore Food Bank

Sponsored by the Once A Month Church

(to volunteer or donate call 342-3969)

OK to bring food donation too



**Walter McClain Winton,  
31 Jul '48 to 12 Sep '12**

Walter McClain Winton, 64, passed away in his home in Waialua, Hawaii on Wednesday, 12 Sep 2012. A resident of Hawaii for over 45 years, Walter was born in Queens Borough, New York City on July 31st, 1948 to [Brigadier General, USA] Walter Ferrell

Walter Ferrell Winton Junior and Wilma Patricia Raymond [Winton]. Walter fell in love with Hawaii in grade school when his father was stationed at Schofield Barracks and returned to Oahu upon graduation from Annandale High School, Virginia in 1967, passing on Mainland big school football scholarships in favor of Chaminade University and surfing. An accomplished waterman of all sorts, Walter was an avid surfer, swimmer and fisherman, winning big wave contests on the North Shore before it was a popular sport. A carpenter by trade, he found his niche with shake roofing and roofed thousands of Hawaiian homes in the '70s and '80s. Known for his wit and kind heart, Walter was fond of poetry, his bible and playing the guitar from time to time. A friend to all on the North Shore of Oahu for over four decades, Walter is survived by his loving wife Lola Leremia [Winton], brother [Lieutenant Colonel, USA Retired] Harold Raymond Winton, son [Colonel, US Air Force Reserve] Joel Ferrell Winton, and grandsons Blake Edward Winton and Connor McClain Winton.



*Coffee!  
You can  
sleep when  
you're dead!*



**6:30AM - 8:00PM EVERY DAY  
NORTH SHORE MARKETPLACE  
WWW.ROASTMASTER.COM**

# BULLETIN BOARD

## HAIR SPECIAL

Full Highlight and Cut \$100.00

### GINA WALKER

Hairdresser to the stars  
from Malibu, CA

Senior Stylist & Color Master  
20 years experience

**North Shore Salon & Spa**  
in Haleiwa Town 808-375-3984

## HOLOHOLO MOBILE SCREEN SERVICE



- \*new window installation
  - \*new screens/re-screens
  - \*pet proof screens
  - \*jalousie repairs
  - \*porch enclosers
  - \*sliding/swinging screen doors
  - \*pet grills & doors
  - \*solar screens
  - \*screen door roller repair
- FREE ESTIMATES  
808-783-8764**  
www.Oahuscreens.com

## Green Waves Landscaping

**Ilan Freitas**  
Owner

- Yard Service
- Tree and Coconut trim
- Splinkler Installation and repair
- Grass Planting and other services
- Phone numbers: 372-8848/371-9617
- greenwaveslandscaping@yahoo.com
- Refer a friend and get one cut free!

## FMS

**Financial Management Solutions**  
Income Tax Services, Comprehensive Financial Services, and Insurance Planning

Complete Financial Services are available on-line.  
Please visit our website for more details.  
Virtual Office Address:

[www.FMS-USA.com](http://www.FMS-USA.com)

Office: 1-855-753-7750 • Fax: 1-866-307-3330 • Email: [amber@fms-usa.com](mailto:amber@fms-usa.com)

Amber M. Doig, Registered Representative, H.D. Vest Financial Services, Inc. Securities Offered Through H.D. Vest Investment Services SM, Member SIPC. A non-bank subsidiary of Wells Fargo & Company, 6333 North State Highway 161, Fourth Floor, Irving, Texas 75038, 972-670-6000

**"THE BULLETIN BOARD THAT IS IN EVERYONE'S HOME"**

# BULLETIN BOARD



Featuring the largest selection of certified organic produce on the North Shore.  
No panic...ours is organic.  
Open 7 days.  
Mon.-Sat. 9am-6pm.  
Sun. 9am-5pm

66-445 Kam. Hwy  
Haleiwa, Hawaii 96712  
Next to the Post Office  
808-637-6729 • 808-637-1922 fax



**DR. PORTER TURNBULL**  
Chiropractic Orthopedist  
(808) 638-8740  
Appointments available Mon.-Sat.  
(evenings by appointment)

- Industrial accidents & auto injuries
- Sports injuries • Spinal care
- Safe, Effective, and Gentle

## N-C PLUMBING & SUPPLY

Cont. Lic. No. C-8913



- RESIDENTIAL & COMMERCIAL SALES & SERVICE
- CONTRACTING & DESIGN • HOME PLUMBING SERVICE
- PLUMBING FIXTURES, HEATERS • FREE ESTIMATES

Nestor P. Calilao (Owner)  
P.O. Box 769  
Waiialua, HI 96791

Bus: 637-8662  
Res: 638-5157  
Cellular: 372-8718

email: nncplumbing@hawaii.rr.com

## Farmer & The Baker, LLC

(Formerly Mokuleia Landscape & Nursery)



### Trees, Palms & Shrubs

**Contact Us: 808-341-1992**



## Restaurant & Margarita Bar

- DAILY SPECIALS -

Island Fresh Fish Tacos  
Premium Margaritas

Large Parties Welcome Open Daily 9:30am - 9:30pm  
637-3059 • North Shore Marketplace • Haleiwa  
www.CHOLOSMEXICAN.com



## COWPER CONSTRUCTION

LIC. #AC 18275

GENERAL ENGINEERING CONTRACTOR

Full Service Sitework Contractor

Septic Systems & Tanks  
25 yr. exp.

Michael Cowper 638-7200  
cowperhawaii.com



754-3579  
nathant@beareng.com  
Waiialua, HI

- Home Inspection
- Structural Inspection
- Septic System Design
- Grading Plans
- Retaining Wall Design
- Drainage Solutions
- Utilities Planning
- Foundation Design

## Pilates

with Linda Yadao

Private, Semi-Private and Mat Classes

Over 30 Years Experience

Call: 637.1230  
linda@ynrmarketing.com



**Rick Grover**  
(808) 983-9331 cell  
(808) 638-8120 office  
rick@grovermasonry.com

License # C-18302

## Munden Design & Build

Lic.#BC19632

Design • Plans • Permits • Construction  
Additions & New Residences

808 391-8616

Providing quality work since 1978

# North Shore News



# 2012 Schedule

### PUBLICATION DATE

### EDITION

### DEADLINE DATE

October 17	#20	October 4
October 31	#21	October 18
November 14	#22	November 1
November 28	#23	November 15
December 12	#24	November 29

**Direct-Mailed to Every Home**  
**MOKULEIA • WAIALUA • HALE'IWA • KAHUKU • LAIE**  
 Every Other Wednesday  
 12,000 copies

"The North Shore's most popular publication" since 1970  
 (808) 637-3138 • NShoreNews@aol.com

## COMMUNITY CLASSIFIED ADS

Heading: (circle) For Sale - Rentals - Services - Lost/Found - Help Wanted - Misc.

Issue Date: \_\_\_\_\_

Name: \_\_\_\_\_ Contact No.: \_\_\_\_\_

Non-business ads – \$4.00 per line, no minimum  
 Business ads including services – \$6.00 per line, minimum 3 lines  
 Lost/Found ads – no charge up to 3 lines  
 Box ads – \$40.00 per column inch

ADS CAN BE DROPPED OFF IN MAIL SLOT, MAILED, FAXED OR EMAILED (NShorenews@aol.com) TO NORTH SHORE NEWS. DEADLINES ARE THE FRIDAY AFTER OUR PREVIOUS ISSUE (THURSDAY IF FRIDAY IS A HOLIDAY). MAKE CHECKS PAYABLE TO: NORTH SHORE NEWS, PHONE ORDERS WITH CREDIT CARDS ONLY.

Print your ad clearly in the space below by using proper spacing and punctuation. We reserve the right to refuse any advertisement with full refund.

**Non-Business Personal Ad**  
**\$4.00 per line • No minimum**  
**Includes tax.**

**Business Ad**  
**\$6.00 per line (min. 3 lines)**  
**Includes tax.**

- \$4.18
- 8.37
- 12.56
- 16.75
- 24.94
- 25.13


- \$18.89
- 25.13
- 32.45
- 39.79

North Shore News P.O. Box 1117 Haleiwa, HI 96712  
 Ph: (808) 637-3138 • Fax: (808) 637-8862



The North Shore News is published every other Wednesday and mailed free of charge to all North Shore homes and businesses. Extra copies may be obtained at our office.

**PRESS RELEASE POLICY:** Submit press releases in person or by fax, mail or email to Editor, North Shore News, P.O. Box 1117, Haleiwa, HI 96712. Please type your releases and keep them shorter than 200 words unless they are of an unusual news interest. Releases should be viable news stories and are published on a **space available basis only**, with priority given to those received in our office first. You may attach photos. We are not responsible for the return of any photos. All materials are submitted at owner's risk. We reserve the right to edit and/or refuse all submissions including advertising.

**EDITORIAL POLICY:** We welcome articles and letters from our readers. Letters to the Editor are published on a space available basis only and preference is given to shortness of length, and quality of content. We prefer to run not more than one letter, per person, per 6 month period. Letters subject to edit.

Views expressed by our contributing writers and advertisers do not necessarily reflect the view of the management and staff of the North Shore News. All rights reserved. Reproduction in whole or part without permission is prohibited. © 2012.

#### Editor & Classifieds

Linda Seyler

#### Typography

Downtown General Store

#### Photography

Trish Coder

#### Contributing Writers

Alec Cooke  
Betty Depolito  
Naty Hopewell  
Choon James  
Kalewa

Richard Sterman

State Senator Donovan Dela Cruz  
City Councilman Ernie Martin  
State Representative Gil Riviere

# CLASSIFIEDS

#### PAUMALU ELECTRIC

David C. Hancock  
638-9054 / Lic#C18074

#### SHORE ELECTRICAL SERVICE

New Const-Remodels  
638-0049 / Lic#C20777

#### LGR Construction

Remodel • Repair • Design  
Drafting • Painting • Small Jobs  
Affordable rates. 343-4453/Lic#26759

#### Dog/Cat Nail Trimming

at your home only \$15.00  
Call Julie 637-5395

#### Aloha Computer

PC Repair/Virus Removal  
Fax/Copy/Internet Access  
372-2667 or 237-4558

#### Lawn Care For You

Mowing, Trimming, Light Hedging  
Call Thomas 637-5839

#### EXPERT ELECTRICIAN

Fans, emergency services, etc.  
Jim Richards 371-9369

#### PARADISE PLUMBING INC.

New Const • Repairs • Remodels  
808-368-1473 / Lic. 29856

#### BEACH PLUMBING & ROOTER

Over 30 years experience  
Call Larry 637-6400

#### Handyman Services

Remodeling, Carpentry, Floors,  
Concrete, all parts of Construction  
Call Bob "The nicest guy in the  
business" Ph. 282-2812

#### Haugan Construction LLC

Build & Repair • Big & Small  
Let's Talk  
Steve 542-9269

#### Greekz Plumbing LLC

"Gotta Leak? Call the Greek"  
@ 372-1820

**J&L SERVICES HALEIWA**  
QUALITY LANDSCAPE AND  
GARDEN MAINTENANCE. ALSO  
PRESSURE WASHING, HEDGES  
AND PLANT INSTALLATION.  
CALL 673-1384 FOR EST.

#### North Shore Massage

Maria Nicoll  
375-3879 / Lic# MAE2071

#### BOW WOW BUNGALOWS

Licensed Boarding Kennel  
North Shore, Oahu  
Reasonable Rates  
Ph. 637-2562  
**These Dogs Have Fun!**

#### HARVEY'S REPAIR, LLC

24 hrs Towing Service  
Specializing in opening  
locked car doors  
Call any time 478-0333

#### GERMAN CAR SERVICE

Professional-Qualified  
Technician  
Call Gary  
637-6800

#### Offshore Plumbing, Inc.

Commercial • Residential  
• Septic • Solar • Design  
Mike 630-1407  
Steve 371-3451  
Lic #C28113  
Fax 638-9022  
offshoreplumbing@yahoo.com

**North Shore News**  
**For Advertising Rates**  
**call**

**(808) 769-7999**

**DT\_OYAMA@YAHOO.COM**

#### BIKRAM YOGA

See our new studio, anti-microbial, anti-bacterial carpet and more!

Please call for class schedule

**637-5700**

#### Your Clean Home

Vacation/Residential

Home Cleaning

Affordable • Reliable

• Green Cleaning

For Free Estimate

Call 638-0262 or 782-9941

#### BOBBY'S BODIES

Tuesday evenings at 5:00 p.m.

• Body Toning

Friday mornings at 9:00 a.m.

• Cardio Pump/Fat Burner

For more info: call Bobby, owner of  
BOBBY'S BODIES at 637-4150

#### SHIATSU • LOMI

Aromatherapy

Milica Barjaktarovic

Lic # MAT8348

351-0848

HumanRemodeling.com

#### PIANO LESSONS

Guitar, Ukulele, Mandolin,

Bass, Songwriting (bullet)

637-4635

#### Painting

RRP Certified

Licensed Lic#31602

Kamaaina Rates

Oahu Precision Painting

Skip Wunderlich 220-9083

**Next Issue - Oct. 17, 2012**

**Deadline Date-Oct. 4, 2012**

#### SUBSCRIPTION RATES

If you live outside the North Shore area on Oahu, neighbor islands, or the mainland, you can subscribe to the North Shore News. Our annual subscription rate is \$35 for 25 issues delivered by standard bulk mail (2-3 weeks), or \$55 for 25 issues delivered by first class postage (3-5 days). Call our office for payment information at (808) 637-3138.

### HOW TO CONTACT THE NORTH SHORE NEWS

Letters to the Editor, and other items submitted for publication consideration may be sent to us via:

MAIL: P.O. Box 1117, Haleiwa, HI 96712

E-MAIL: NShoreNews@aol.com

FAX: (808) 637-8862

PHONE: (808) 637-3138



# CLASSIFIED ADS

**LEARN TO SWIM**  
AT THE  
**HAWAII SWIM SCHOOL**  
ON THE NORTH SHORE  
Developing swimmers since 1982  
Haleiwa Rd. at Smiley Place  
637-4863

**Lisa Carley Skin Care**  
637-9400  
lisacarley.com  
67-292 Goodale Ave. #104  
Waialua Shopping Center

**ANGELS PLUMBING**  
Repairs  
Remodeling  
Renovation  
**638-7878**  
Lic. #C12004



**THE LAWN RANGER**  
Lawn Maintenance  
no yard too hard  
no lawn too far gone  
We mow betta  
258-6439 Dan Fatchett

**NORTH SHORE CHAMBER OF COMMERCE**  
*An Affiliate of  
The Chamber of Commerce of Hawaii*  
**Business Services Center**  
Fast & convenient fax, copy,  
scan, computer/internet,  
laminates, etc.  
Across from Haleiwa post office.  
North Shore Chamber of Commerce  
637-4558 or 342-8557



**Marianne Abrigo, Properties**  
Specializing in -  
North Shore  
Real Estate  
Ask for our list of available properties and/or a free market analysis.  
**Marianne M. Abrigo**  
"Realtor since 1974"  
Office **637-3511**  
Fax **637-0777**  
Email **mabrigo222@aol.com**

**HELP WANTED**  
**BUSSERS/SERVERS**  
Pizza Bob's in Haleiwa is looking for BUSSEERS/SERVERS. Experience preferred. Apply in person at 66-145 Kam. Hwy.

**COOKS/KITCHEN HELP**  
Pizza Bob's in Haleiwa is looking for kitchen personnel. Experience preferred, but will consider training the right people. Apply in person at 66-145 Kam. Hwy.

**Retail Sales Surf & Sea**  
Hawaii's Ocean Sports Headquarters is always looking for hard working, energetic people to become a part of our sales team. Good pay, bonus, benefits. Ocean sports experience and/or bilingual a plus. Apply in person daily 9am-7pm  
62-595 Kam. Hwy., Haleiwa

Farm seeking responsible hard working individuals. Work included but not limited to harvest, prune, clean & prep w/ flexible hours. Leave a message. **Call 707-200-1375**

**MISCELLANEOUS**  
**Ho'ola Like Waikiki Health**  
Center's North Shore Clinic Queen Liliuokalani Church 8:30am - 3:30pm, Tuesday and Thursday

**IGREJA EVAN. BRASILEIRA**  
Domingos 10:00 am  
Quartas 7:30 pm  
Sextas-Culto de Oraçao 7:30 pm  
Voce e o nosso convidado especial  
Behind Hale'iwa Post Office  
637-5566  
Pastor Luiz • 638-2212

**REUNIONS**  
The NSN is happy to publish your school or family reunion Free of charge.  
Email your announcement to NShoreNews@aol.com.

**Don't throw away that old BIKE!**  
Donate it to **Yikes Bikes**  
A non-profit program at Waialua High & Intermediate School  
**637-8200**  
M-F • 8 a.m.-3 p.m.

**FREE Senior Citizen Art Class**  
Jay Marr Art Gallery-Waialua  
Last Tues. of the month  
10 a.m. - 12 noon  
supplies included - space limited  
call 637-2562

**BEGIN WATERCOLOR**  
Jay Marr Art Gallery-Waialua  
Tues. Evenings 6:30-8:30  
\$30/class includes all supplies (go home with a painting!)  
call 637-2562 for details

**North Shore Farmers Markets**  
Haleiwa: 3 p.m. to 7 p.m. Thursdays, at Waimea Valley, Pikake Pavillion & Lawn.  
Waialua Sugar Mill: 8:30 a.m. to noon Saturdays & Wednesdays 4:40 p.m. to 7:00 p.m.  
North Shore Country Market: 8 a.m. to 2 p.m. Saturdays, Sunset Beach Elementary School, 59-360 Kamehameha Hwy.  
Lai: 11 a.m. to 2 p.m. June 24, July 8 and 23, Brigham-Young University-Hawaii, 55-220 Kulanui St.

**Keep it Country**  
To report **ILLEGAL VACATION RENTALS**  
call 768-8159 or 768-8118  
You will remain anonymous  
**Illegal Vacation Rentals are ruining the North Shore**  
www.savenorthshoreneighborhoods.com

**WAIALUA WRITERS**  
The Waialua Library writers group meets at 11 a.m. on the second Saturday of each month at the library.  
Call 637-8286.

**EBT Neuter Now**  
EBT card holders may purchase reduced rate sterilization certificates for \$20. EBT Neuter Now certificates must be purchased in person at the Humane Society or any Satellite City Hall office.  
Please bring your ID and EBT card.

**Local Dump Sites**  
(refuse trasher stations)  
OPEN 7 DAYS A WEEK • 7 a.m. - 6 p.m.  
(except Christmas/New Year)  
Kaaaloa (Waialua) 637-5511  
Lai 293-8714  
Wahiawa 621-3648  
**OPALA.ORG**  
Don't Dump on Hawaii Sort it out  
692-5656

**We Want To Hear From You**  
Send us your "Letter to the Editor" on any topic in this publication, or any community concern. Letters 200 words or less preferred. Include first & last name & contact phone number.  
NShoreNews@aol.com

**OFF da ISLAND**  
Are you leaving Oahu on vacation or business? Do you live on a neighbor island, the mainland or foreign country and subscribe to the North Shore News? Try send us a photo of someone in front of a sign or landmark holding a copy of the NSN. Email your photo along with the person or persons' name, community of residence, telephone number and photo location to: NShoreNews@aol.com. Or, mail to OFF da ISLAND Photo, North Shore News, P.O. Box 1117, Hale'iwa, HI 96712. We cannot return photos so please send us a copy. Photos received become the property of NSN. Preference and priority will be given to emailed photos.

**BEACH CLEAN UP**  
Chun's Reef - 10 a.m.  
637-2211  
Last Saturday of every month  
adoptabeachhawaii.org

North Shore Community  
**BLOOD DRIVE**  
Saturday, Nov. 24, 8am-12 noon  
Bloodmobile at  
Virginia Abshier MD's office  
66-214 Haleiwa Road  
Bring a valid photo ID With birthdate.  
Eat well and Drink plenty of fluids.

**Save Sea Turtles**  
Use Reusable Bags  
**www.b-e-a-c-h.org**

**Waikiki Hot Yoga**  
5th Fl. Miramar Hotel  
Call for info: 277-9935  
www.waikikihotyoga.com



MALAMA MARKET HALEIWA:  
OPEN DAILY 7 AM-9 PM  
808.637.4520

MALAMA MARKET MAKAKILO:  
OPEN DAILY 6 AM-10 PM  
808.672.9955

Valid Dates:  
10/3/12-10/9/12

**Navel Oranges** **\$1.49**  
36's, Australian PER LB.



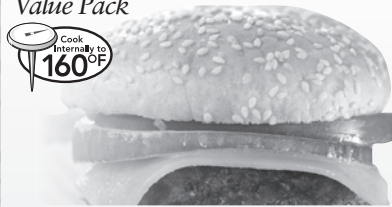
**Frito-Lay Potato Chips** 2/\$6  
Selected Varieties, 9-10.5 oz.



**Meadow Gold POG, Passion Orange, or Haleakala Ice Tea Gal.** **\$3.99**



**Fresh Ground Beef** **\$2.79**  
80% Lean, Value Pack PER LB.



**Frito-Lay Dairy Dips** **\$3.69**  
Selected Varieties, 15 oz.

**Spam Luncheon Meat** **\$2.59**  
Selected Varieties, 12 oz.



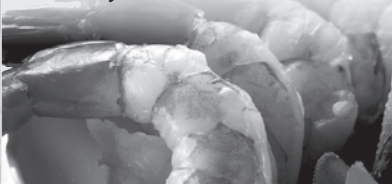
**Dasani Water** 2/\$9.99  
24/500 ml.



**Fresh Baked French Bread** **\$2.29** EACH



**Large Cooked Shrimp** **\$8.99**  
31/40 ct., Previously Frozen PER LB.



**Scott Bath Tissue** **\$6.99**  
12 Double Rolls or Scott Paper Towels

**6 Mega Rolls**



**Fresh Baked Country Cookies** **\$3.99** EACH  
Assorted Varieties, 17 oz.



**7Up, Sunkist, Sun Drop, or A&W** 5/\$5.99  
Selected Varieties, 2 ltr.



**Banquet Family Entrée** 3/\$9  
Selected Varieties, 2.5-32 oz.

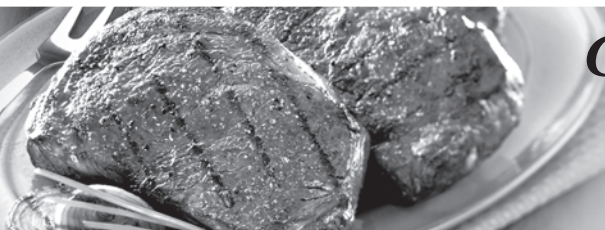


**Budweiser, Bud Light, Coors, Coors Light, Miller, Miller Lite** **\$21.99**  
30 Pk. Cans or Heineken or Corona 18 Pk. Bottles



**THURSDAY**

INCLUDES:  
**7-8 oz. Steak**  
Rice • Tossed Salad • Drink



**Grilled Steak LUNCH**  
**\$6.99**

Hawaii Beverage Fee of 1¢ per can or bottle will be added to purchase price at checkout. An Additional Hawaii Deposit fee of 1¢ will be charged for all specially marked beverage containers.

Limit five units (mix/match) per purchase, unless otherwise specified. We reserve the right to limit quantities. No sales to dealers. Prices plus applicable state tax. Hawaii EBT cards welcomed.