



“E Ala Na Moku Kai Liloloa”

**Kamehameha Schools
Announce Store Lot
Tenants**

see story on page 11



NORTH SHORE NEWS October 2, 2013 VOLUME 30, NUMBER 20



“Chef Roc” is in da House

Chef Roc will join the Hawaiian fall line-up on KFVE-TV5 and KHNR 690AM. The Chef Roc Culinary Underground TV and Radio Show will hit the airwaves this fall airing all over Hawaii. Celebrity Chef Roc was the Executive Chef of the Breakers Restaurant on the North Shore. Always on the cut-

ting edge Chef Roc will launch his new show from the North Shore. The Chef Roc Culinary Underground will be the first dinner-theater style Cooking Show on TV which will premiere on October 4th and will air every Friday night at 7 p.m. The TV show will be shot on location in front of a live

audience at the Hawaii Polo Club in Mokuleia. If you would like to be a guest at a taping, email: Roc@ChefRoc.com. Check the www.ChefRoc.com website for exact date and show times. “Thanks to all who enjoyed my cooking, stay hungry my friends!”

PRE-SORTED
STANDARD
U.S. POSTAGE PAID
Honolulu, Hawaii
Permit No. 1479

Hale'iwa, HI 96712
66-437 Kamehameha Hwy., Suite 210

PROUDLY PUBLISHED IN
Hale'iwa, Hawai'i
**Home of the NS Menehune
Surfing Championship**
see page 13



OFF da Island in Winslow, Arizona

Debbie and Jeff Alameida of Waiialua took a road trip down part of Route 66, as they approached Winslow, Arizona a familiar classic Eagles tune came on the radio - "standing on the corner in Winslow, Arizona..." Jeff quotes "still singing that darn song!" Debbie packed a recent copy of the North Shore News to read when not posing for pictures on street corners with her husband and to remind her of the good times on Oahu's beautiful North Shore. For more information on the OFF da Island campaign turn to page 23.

DRAFTPLANS HAWAII

-Over 10,000 floor plans & blueprints available for purchase online. Gather ideas for your own design.
 -Drafting Service available for new home designs, additions, renovations, decks, fence, rock walls, etc.
 -Free property specifications & title search info.

www.draftplans.com

Call for free estimates:
265-0035




The Haléiwa Family Dental Center, Ltd.



presents
"Comfort Dentistry"
 including—

- Relaxation Glasses
- Television Glasses
- Caring Staff
- Special Medication to help you relax
- Laser Cavity Detection
- New Patients Welcome!

Your teeth are much too important to neglect.

Call: 637-9652
for your reservation

We're conveniently located behind First Hawaiian Bank
in the heart of Haléiwa.

TURTLE BAY FOUNDATION IS ACCEPTING APPLICATIONS FOR FUNDING COMMUNITY EVENTS, PROGRAMS, GROUPS AND SCHOLARSHIPS.

The Turtle Bay Foundation was established in 2012 to enrich Oahu's Fabled North Shore through environmental, educational, recreational and cultural opportunities.

The Turtle Bay Foundation is now accepting applications, until October 15, 2013, for funding community events, programs, groups and scholarships.

For more information please visit our website www.turtlebayfoundation.com or call Kiele at (808) 447-6953.





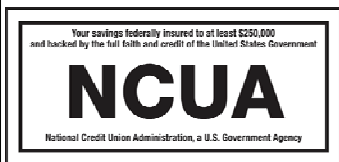
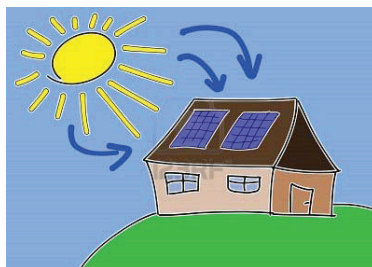
WAIALUA
Federal Credit Union



**Looking to install Solar Photovoltaic?
Consider a Home Equity Loan from Waialua FCU.
No closing costs and a low interest rate can help you on
your way to lowering your electricity bill.**

Current HELOC Rate is 3.75% APR*

*Annual Percentage Rate based on an index of 3.50% plus the monthly average of the 26 week Treasury Bill (Auction High) and may be adjusted annually each March. Please call for more details.



You are eligible to join if you live or work in Waialua or Haleiwa.

Phone: 637-5980 Located in the Waialua Shopping Center



**US Marine
Corps Forces of
the Pacific Band**

will play for our community
on
Sunday, October 6
at
**The Waialua Bandstand
in the Park**
4:00 p.m. - 5:30 p.m.

Come join us and
bring your lawn chair.
www.waialuabandstand.com



WAIMEA VALLEY

— WHERE HAWAII COMES ALIVE —

UPCOMING EVENTS

Saturday & Sun, Oct. 12 & 13
MAKAHIKI FESTIVAL

Live music, games, cultural activities

3rd Sunday Every Month

KAMA'AINA DAY

Kama'aina & Military Appreciation:
50% Off General Valley Admission!

Every Thursday, 3 - 7 PM

HALE'IWA FARMERS' MARKET

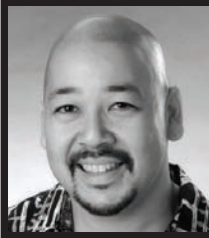
Locally-made products and more



SPECIAL EVENTS

Let Waimea Valley host your next special occasion! Call to learn more about planning, rentals, and catering

On the North Shore across from Waimea Bay • Open 9 AM - 5 PM Daily
Call: (808) 638-7766 • WAIMEAVALLEY.NET



Council Chair
Ernie Martin
Serving You in District 2

The Benefits of Community Development Block Grants

A slow economic recovery and funding cuts at the federal level will mean less financial assistance that local governments can provide to improve our communities and neighborhoods. In an effort to protect as much federal funding as possible, the Honolulu City Council recently passed Resolution 13-147, urging the United States Congress to preserve the current level of funding for the Community Development Block Grant (CDBG) Program. Sequestration has put a strain on the federal funds available for government programs such as block grants and the City and County of Honolulu will definitely be impacted by funding cut backs.

The Community Development Block Grant Program has been assisting municipal governments since Congress enacted the Housing and Community Development Act of 1974 (Public Law 93-383). This law replaced earlier grant and loan programs under which grantees competed nationally for funds in specific project categories, including urban renewal; neighborhood development program grants; open space, urban beautification, and historic preservation grants; public facilities loans; water and sewer and neighborhood facilities grants. Under the CDBG program, a grantee is encouraged to develop a locally designed comprehensive community development strategy to achieve the program's primary objective: the development of viable urban communities. The pathway to accomplish this is to provide decent housing and a suitable living environment as well as expanding economic opportunities principally for persons of low and moderate income.

The funding allocation of the CDBG program is based on a formula which assures each entitlement grantee an annual sum of money to carry out its community development program. Under the law, 70 percent of the annual distribution of funds is reserved for entitlement communities. In order to receive its allocation of funds, a community must submit a Consolidated Action Plan to the Department of Housing and Urban Development (HUD). The City's Department of Community Services is charged with this responsibility.

The City has historically allocated a portion of these funds for projects to be carried out by private, non-profit organizations that are equipped to provide specialized services to the community. Past grantees include the Domestic Violence Action Cen-

ter which provides services and resources for victims of domestic violence in need of legal counseling, the Institute for Human Services for rehabilitation of shelters, the Kahuku Housing Foundation for the renovation of the Community Center and an elderly rental housing complex, the Legal Aid Society of Hawaii to provide legal services to the homeless and the Windward Spouse Abuse Center for staffing of an emergency shelter for the homeless and victims of domestic violence.

The Community Block Grant Program continues to be an important component of the City's effort to address the social and economic challenges of a growing population. I encourage non-profits serving the North Shore community to look into CBDG grant funding possibilities. For more information on this program and other grant opportunities, you can visit the Department of Community Services on the web at www.honolulu.gov.

In Hawaii we greet friends, loved ones and strangers with Aloha, which means with love. Aloha is the key word in the universal spirit of real hospitality, which makes Hawaii renowned as the world's center of understanding and fellowship. Try meeting or leaving people with aloha. You'll be surprised by their reaction. I believe in it and it is my creed. "Aloha to you."

Uncle Duke Paoa Kahanamoku



**PARADE ON
DOWN TO
PKB!**



"Da Best"

**Always OPEN
7 days a week**

Special offer!

Just flip the page!

Learn more about us from our real customers at YELP where we have over 130 reviews!

Are you a Snow Puffy junkie??

www.pkbsweets.com

Hawaii celebrity “Jimmy Borges” guest stars in local North Shore movie “Angel By Thursday” directed by fireman Jeff Wallace.

By Vicky Borges (the beautiful wife of Jimmy Borges) & By Arlene Newman-Van Asperen/ Mrs. Hawaii 2005/Actor/Co-Producer of Angel by Thursday

How many celebrities can say they were discovered by Jack Lord, had drinks with Elvis Presley, gambled with Frank Sinatra, played golf with Don Ho, gave (for free) a hit song to Liza Minnelli and beat liver cancer!

There is only one person, the awesome “Jimmy Borges.” Born the same day as Marilyn Monroe (only ten years later) this star’s resume is so impressive, and yet, he is such a humble, sweet man.

Jimmy worked on both the original and new Hawaii Five-O. (He acted in 15 episodes of the original) He worked on Charlie’s Angels and was a regular on the hit TV show “Magnum P.I.” He worked also with Dennis Weaver, Bill Conrad and Jose Ferrer, in many “Movie-Of-The-Week” episodes. The Hawaii Association of Recording Artists (“Hokus”) and NSAL (National Society of Arts and Letters) crowned “Jimmy Borges” with the coveted “LIFETIME ACHIEVEMENT AWARD”. These were both singing awards. He was named one of the “Fifty Most Influential People in Hawaii” since statehood in 1959. (By The Star-Advertiser’s Wayne Harada in 2009) He was chosen by Frank Sinatra, to perform “Frank Sinatra’s” original arrangements in concert with POPS orchestras behind him as he toured all over the world.

It all started in Kalihi, Hawaii, where Jimmy was born. His family moved to Oakland California when he was almost twelve. He started his jazz-singing career in San Francisco, and it soon took off! He played in Las Vegas, New York, Chicago, Miami Beach, Los Angeles, Rio de Janeiro, Tokyo, New Zealand, etc.

His career has lasted over 60 years and hasn’t stopped.

He truly cares for the people of Hawaii and gives back constantly. He is currently doing concerts to spread his message of hope since he beat liver cancer a couple of years ago. He goes to hospitals to sing and talk to young cancer patients. “I understand what they’re going through,” says Borges. He has a strong desire to mentor young people and does so whenever he is not singing or traveling. He has singing contracts through 2015. “I’m enjoying every moment,” says Borges. Borges will be guest starring in “Angel by Thursday,” a local movie being filmed on the North Shore, and directed by local Kahuku fireman, Jeff Wallace. Borges plays a wise fisherman who watches over Waimea Bay. In his role he reflects on memories of Eddie Aikau’s bravery. Eddie’s life and how he died. Jimmy’s character gives wisdom and advice to the young men who come to the bay. (Very similar to what Jimmy does in “real life.” “Angel By Thursday” is about two families thousands of miles

away, struggling with scars of horrible childhood tragedies. One family is torn apart by the constant flash backs and nightmares of Vietnam. While the other family, enjoying all the pleasures of life, is scared forever after a beautiful day at the beach takes a terrible turn for the worst. Linked by a series of uncanny events, this journey joins the two families together. The children of the families discover the emotional waves of forgiveness, healing and love. Waimea Bay may hold the secrets to their ultimate destiny.

I have always wanted to work with Jimmy and have been in awe of his talent. I had talked to Jimmy many times in the past about doing a project her in Hawaii. I am so excited to finally have this honor to work with such a legend in the film, music and TV industry!

More articles to come! If you have questions for cast or enjoyed this article let us know! Email us at Angelbythursday1@gmail.com

Follow us on the media wave! Check out our webpage, twitter and Facebook. “Angel by Thursday”. We will have cast, crew and behind the scenes stuff. Any local company wishing to get involved or volunteer, please contact us at: Angelbythursday1@gmail.com



Arlene Newman and Jimmy Borges.

Waimea Valley celebrates Makahiki, Hawaii's traditional peace and planting time

Makahiki, a four-month season of peace, harvest and games in ancient Hawaii is remembered and celebrated each year at Waimea Valley. The event is held over a two-day period and is filled with physical, spiritual and artistic Hawaiian cultural activities. This year Makahiki will be celebrated on Saturday, October 12 and Sunday, October 13 from 9 a.m. to 5 p.m.

The event will feature a series of Hawaiian game demonstrations at Ka 'ili 'ili uka, the Valley's Upper Meadow where guests of all ages will be able to participate and compete. The traditional Hawaiian games include: 'Ulu maika (disc throwing) Moa pahe 'e (dart sliding), Konane (a checkers like game), 'O'o ihe (spear throwing), Pa Uma (hand wrestling), Kulakula 'i (chest pushing), Kukini (foot racing) and Hukihuki (tug of war).

A new Holua (sled), created by Tom Pohaku Stone and a sled run will be used on the meadow hillside to demonstrate the fast and unusual sport. The use of the Holua requires upper body strength and a keen sense of balance. In Ka Wa Kahiko (olden times) the Ali'i challenged one another on Holua slides that were bordered by jagged lava fields to demonstrate their bravery and their right to lead. Sometimes the competitions ended in disaster with one or another chief ending up in the lava fields rather than at the finish line.

During the Makahiki season, spears were turned pointing downward in the hale or wrapped in kapa cloth to signify a time of peace and rejuvenation. It was kapu or forbidden to create or engage in war. However, mock battles and physical competition were encouraged to sharpen the fighting skills of young warriors.

To build a sense of community and good sportsmanship amongst the youth, Waimea Valley has invited several Central Oahu and North Shore schools to engage in friendly rivalry and competition all the while developing skills required in Hawaiian traditional gamesmanship. Hawaii companies are also being called to take up the challenge of friendly competition by calling on their corporate rivals to participate in the Makahiki games. Cash prizes will be awarded. Registration deadline is Monday, October 7.

Several Halau Hula and a Pa Lua (Hawaiian school of martial arts) will perform throughout the two-day event presenting Kahiko Hula. The Hula and Lua practitioners to date include: Ke Kai o Kahiki – Kumu Hula La'akea Perry; Halau Hula Makana a Ke Aloha – Kumu Hula La'ai Felix; Na Makahonukapiliwale – Kumu Hula Momi Cruz and Pa Ku 'i a Holo (Hawaiian martial arts group) – Dr. Eli Mitchell.

There will also be Mo'olelo (storytelling) by elders sharing their memories of Waimea Valley and the history of the North Shore. The event will also feature lomilomi (massage arts) specialists, native plants sales, feather lei makers, pohaku shapers,

kapa makers, Hawaiian weapons artisan and artful jewelers. Also, delicious Island food and cold drinks will be available for purchase at the meadow site.

The word Makahiki means "year". It may also be a contraction of the word Makali 'i hiki or the "rising of the Pleiades". The season which runs for four consecutive lunar months from October or November through February or March is dedicated to Lono, the god of harvest, fertility and prosperity. There is a heiau dedicated to Lono on Waimea Valley's north valley wall.

In the spirit of the Makahiki season and the custom of sharing the abundance of the 'aina, Waimea Valley would like to request that each family brings a canned good or a non-perishable food item which will be donated to the North Shore Food Bank. Reduced admission to the event is being offered to Residents and Military personnel: \$5 per person and \$10 for a group up to 10 people. Identification required.

Hi 'ipaka LLC, dba Waimea Valley is a 501© (3) non-profit organization. Its mission is to preserve and perpetuate the human, cultural and natural resources of Waimea for generations through education and stewardship. Makahiki 2013 at Waimea Valley is proudly sponsored by Bank of Hawaii. For more information call (808) 638-7766 or visit our website at www.waimeavalley.net.

ONLY AT PAALAA KAI BAKERY

TAKE YOUR PICK!



Featuring our special
PARADE OF TIER-DISCOUNT PRODUCTS

* LONG JOHNS	* DOUGNUTS
* DOUGHNUT HOLES	* TURNOVERS
* BUTTER ROLLS	* BROWNIES

Buy 2 items for 15% Off w/coupon
Get 4 items for 20% Off w/coupon
Try 6 items for 25% Off w/coupon

Discounts apply only to the above featured products via the quantities of same or different items listed

Mix-And-Match above items to find exactly what you want

Discounts good until October 15th and not to be combined with any other offers and/or promotions

www.pkbsweets.com



**Representative
Lauren
Matsumoto
Serving You in District 45**

Capitol Communications

As I reflect on my first Legislative Session as your State Representative to prepare for the second one, I continue to feel that much of the communication between the State Legislature and you, the people we serve, is one-way communication. By that I mean one-way communication from US to YOU. At the end of the Session, you would be given bills that have passed, most without any mention during Session. I believe that as leaders in our government, we need to have two-way communication with you to assure that the bills that are passed in the State Legislature are relevant to you.

In my effort to create and enhance two-way communication with you, the residents of our district and community, I hope to get a "temperature check" of our district's needs through your input on particular issues and bills that matter to you. When you visit our website at www.RepMatsumoto.com, you will see a list of issues. I invite and encourage you to select the issues that you find important. When you do that, I can send information and bills that pertain to the issue(s) so that you are informed of possible impacts to you, our families, and our community. This will be especially important as we head into the 2014 Legislative Session, so that you can have the time to testify on bills of interest to you.

In the near future, our website will also include surveys on hot topic issues so that I can get a better understanding of our community's before I vote on proposed legislation related to those hot topic issues. With your involvement and your voice, together we can make democracy work better for a better community!

By now you are most likely aware that the Governor has called a Special Session to begin on Monday, October 28th on the issue of Same Sex Marriage in Hawaii. Regardless of whether you oppose or support the legislation, your voice is important to the process and deserves to be heard.

As always, if you have a concern or question, you can call me at my office at 586-9490 or reach me by email at RepMatsumoto@Capitol.Hawaii.gov.

**MENEHUNE MADNESS
SPECIAL EDITION**
Publication Date: October 16, 2013
Deadline Date: October 3, 2013

**Celebrate
Energy Awareness Month**

"I promise to open the windows and not use the a/c!"
- Casey Morishige, 10

Visit hawaiianelectric.com to see how students like Casey are doing their part to use energy wisely, and learn how our company is working to shape a clean energy future for Hawaii.

Hawaiian Electric Company

hawaiianelectric.com

CRAFT FAIR

Saturday, October 19, 2013
9:00 a.m. to 2:00 p.m.

Come and join us at our annual craft fair!!! Some of the items for sale are:

- Jewelry, pottery, accessories, doggie treats and other great gift items
- Baked goods, snacks, sushi, shaved ice and bento lunch

Haleiwa Jodo Mission
66-279A Haleiwa Road
(next to Ali'i Beach Park)

Vendor spaces still available!
Please call 637-4382 or write to haleiwajodominionya@gmail.com for more information.

ROBERT M. PAGAN CONSTRUCTION COMPANY

(808) - 499 - 8617

New construction / Additions / Remodels - Lic # 32866 Bonded / Insured
www.robertpaganbuilders.com

SAVE THE DATE!

The North Shore Chamber of Commerce will hold its annual Christmas Party, Awards and Auction at Waimea Valley this year on Wednesday, December 4th.

This wonderful holiday event celebrates the people who have made lasting contributions to our North Shore community through the North Shore Kama'aina of the Year award. This year the award will go to Joe Lazar for his service to our community in being a key leader in Hale'iwa Main Street and the North Shore Chamber for many years leading the organization through a difficult transition when it lost its state funding. He was Hale'iwa Main Street/the Chamber's President for seven years. He also supports many charities.

- What: North Shore Chamber of Commerce's annual Christmas Party and Auction.
- When/Program: Wed., Dec. 4, 2013 at 6:00 p.m.: no-host cocktails, awesome auction, and tribute to the North Shore Kama'aina of the Year
- Where: Waimea Valley, Pikake Pavilion
- Prices: Individual tickets: \$65 each for members and one guest; \$75 each per non-member.

For more information, call the North Shore Chamber of Commerce at 637-4558 or go to www.GoNorthShore.org.



SAVE THE DATE!

NORTH SHORE OUTDOOR CIRCLE
PRESENTS THE
HARVEST MOON DANCE
SATURDAY OCTOBER 26
8:00pm-11:00pm WAIMEA VALLEY PAVILION

The Joe Green Band with Otis Schaper

ADVANCE TICKETS ON SALE IN HALE'IWA AT
KAI KU HALE 636-2244 & SURF N SEA 637-9887

Tickets \$20 in advance or
\$20.00 at the door / 21 or older

*PURCHASE OF AN ADVANCE TICKET ENTITLES YOU
TO ENTER A DRAWING AT THE DANCE FOR
PRIZES!*

You're Invited!!!

FAMILYLIFE presents

the art of 
marriageTM
a six-session video event



TheArtOfMarriage.com

DATES: FRIDAY EVENINGS,
October 11th – November 15th

AVAILABLE AT 2 LOCATIONS:
Sunset Beach Christian Church,
or, The Koinonia Room
(behind the Haleiwa Post Office)

TIME: 7:00pm Cost: FREE!

Free Child Care provided

TO REGISTER, please contact
Bob Prasser, 225-5631, or
bobatnscf@gmail.com

Sponsored by
North Shore Christian Fellowship,
Sunset Beach Christian Church,
& The Mission

Tickets now on sale for Hawaii's largest Halloween attraction at Wahiawa's Dole Plantation October 1 thru 31

- Haunted house, maze and train make Dole Plantation a unique Halloween experience -

Dole Plantation goes from family-friendly to spooky this October with Nightmare at Dole Plantation, Hawaii's largest haunted attraction.

Nightmares Live Haunted Attraction will partner with Wahiawa's Dole Plantation to feature three exclusive attractions:

- 13, a haunted house featuring 13 unlucky plantation curses
- Nightmare Express, a fright-filled train ride through fields of pineapple...and bone-chilling horrors and
- Trail of Terror, a frightening maze that may have no escape.

The haunted house is open daily from Tuesday, Oct. 1 through Thursday, Oct. 31 from 10 a.m. to 3 p.m.

Fright nights at the haunted house, maze and train are as follows from 7 to 11 p.m.:

- Friday, Oct. 4 and Saturday, Oct. 5
- Friday, Oct. 11 and Saturday, Oct. 12
- Friday, Oct. 18 and Saturday, Oct. 19
- Friday, Oct. 25 and Saturday, Oct. 26

Families are warned that Nightmare at Dole Plantation may be too intense for children. Children under 13 must be accompanied by an adult.

Discounted, Pre-sale Tickets Available Through Oct. 12. \$10 pre-sale tickets for the maze and haunted house have been on sale since Sept. 1 and will be available through Oct.

12. There are no pre-sale tickets for the Nightmare Express train to ensure availability/ability to accommodate during the desired train departure time. Eight trains depart each night on the half-hour beginning at 7 p.m. The final train departs at 10:30 p.m. Pre-sale tickets are sold through Dole Plantation's web site at dole-plantation.com or NightmaresLive.com.

Discounted rates for groups of 25 or more. Discounted rates of \$7 per person for groups of at least 25 are available through Oct. 12. Group-rate tickets are \$10 person starting Oct. 13. These discounted, group-rate tickets are only available at Dole Plantation.

Walk-up, on-site ticket sales. General admission same-day tickets are \$13 each for the train, maze or haunted house.

Discount coupons worth \$3 off are available exclusively through all Times Supermarket, Fujioka's and Shima's locations on Oahu. These coupons are redeemable at only Dole Plantation, but for any day during the event.

Tickets may be purchased with cash and via credit card. Commemorative photos will be available for purchase. For more information about the Halloween events, visit dole-plantation.com.

Nightmare at Dole Plantation. Three attractions. One Location. Endless screams.

Hallelujah Night

Hosted by New Hope
Central-Haleiwa

Thursday, October 31st

6:00 p.m.-8:00 p.m.

at

First Baptist Church and Preschool

66-415 Haleiwa Road

Phoned: 637-4847

FREE

Appropriate for children 1-10 years old

Public Invited

Fun, Games, Balloon-Bouncers,
Keiki Ride, Treats, Food
and Entertainment!



October is

Pastor

Appreciation

Month



CO-ED SLOW PITCH

Thursday Games

7 p.m. & 8 p.m.

Waiialua Recreation Center

For more information call

Jay Keao 347-5512

Kamehameha Schools announces 11 Hawaii businesses to make Hale'iwa Store Lots their home

Kamehameha Schools announces tenants who will join Hale'iwa Store Lots (HSL) upon completion in fall 2014. Located along Kamehameha Highway at the site of Matsumoto Shave Ice, Hale'iwa Store Lots will feature Hawaii businesses, retailers and restaurants, including many with roots on the North Shore.

A historical reference to the site's original name—Waialua Store Lots—Hale'iwa Store Lots will preserve and retain the rural character of Hale'iwa Town by merging old and new in a cohesive, safe, and historically authentic way. With 27,000 square feet of gross leasable space, Hale'iwa Store Lots will share Haleiwa's history of people and place through plantation-era buildings, sustain Hawaii-owned retail and dining businesses, and ensure long-term viability of this special place.

"To perpetuate Haleiwa's rich history and cherished culture, Kamehameha Schools approached this redevelopment with the rural community and culture in mind," said Kamehameha Schools' senior land asset manager Kalani Fronda. "We set out to attract family-owned businesses who could offer unique, affordability, friendly, fun and memorable offerings or services similar to Matsumoto Shave Ice," said Fronda.

An iconic feature of the North Shore community since 1951, Matsumoto Shave Ice will remain open during construction and continue to welcome customers to their original location. Their premises will be expanded to double their original size and will include an open lanai area that faces the main courtyard.

"We are excited to be working with Kamehameha Schools to achieve a wonderful and relaxing destination stop for our visitors to the North Shore as well as for our local residents," said Matsumoto owners, Stanley and Noriko Matsumoto. "We are looking forward to a new beginning and anticipate another 62 years of happy smiles and memories."

Aside from existing tenants, Matsumoto Shave Ice and Global Creations, who will remain open during construction, Kamehameha Schools has signed agreements with Whaler's General; Store and fruit stand, T&C Surf, Fatboys, Rajanee Thai Cuisine, Island Vintage Coffee, Kahala Sportswear, Mahina, Splash! Hawaii, and Uncle Bo's.

"We are thrilled with the amount of interest we've received for Hale'iwa Store Lots," said Fronda. "In most instances, we had several tenants vying for the same space."

Currently, 77 percent of the project is already leased through leasing agent Colliers International. Another batch of agreements are very close to execution, and the last few spaces are being negotiated with multiple offers on the same space. At final completion of leasing, the Hale'iwa Store Lots will be comprised of approximately 55 percent retail tenants, 40 percent eateries and five percent office space.

The Sullivan Family of Companies will operate the Whaler's General Store, a convenience shop for sundries, Hawaii gifts and souvenirs and local chef-made grab and



HSL Blessing photo: Kamehameha Schools' VP of Endowment, Elizabeth Hokada, unties the maile lei with Hale'iwa Store Lots' general contractor, Allied Builders System.

go foods and beverages. In addition, a separate space operated by Whaler's General Store will be an open-air, country fruit stand showcasing Hawaii fresh, locally-grown fruits and vegetables.

"We are grateful for this opportunity to bring Whaler's General Store to the Hale'iwa community," said Jenai Sullivan Wall, Chairman and CEO, The Sullivan Family of Companies. "Our locally owned and operated family of companies has been a part of the North Shore community for more than 30 years, and we're excited to now share a new store that will capture the essence of old Hawaii with a contemporary twist," said Wall.

Recognizing that Hale'iwa is the largest retail and recreation destination on the North Shore, Hale'iwa Store Lots was designed to highlight the historic plantation character of the Hale'iwa Special District and the role small businesses play in maintaining a relaxed and friendly gathering place for the community.

Total investment in this community revitalization project is \$16.1 million. Construction is expected to take 12 to 15 months (including tenant build outs) with completion by 2014 winter surf season. Upon completion, the project will feature reuse of five historic buildings; a central gathering place; public restrooms; 95 parking stalls at the rear of the project; and walkways and landscaping that separate pedestrians from vehicles and assist drainage.

Hale'iwa Store Lots is part of the Kamehameha's North Shore Plan (NSP) developed in 2008 with an extensive community planning process. The Plan identified seven "catalyst" projects and received the American Planning Association's 2011 National Planning Excellence Award for Innovation in Sustaining Places. Kamehameha Schools has also implemented projects such as the restoration of Loko Ea fishpond, \$12 million of agricultural water system improvements, and renewable energy.

Kamehameha Schools is committed to redeveloping this important property in a manner that supports the community's vision to retain Haleiwa's historic country character while revitalizing a highly visible and valued community asset that in turn supports Kamehameha's educational mission.

Contact: Kekoa Paulsen
Email: kepaulse@ksbe.edu

Now Open in Haleiwa!!

NIXIE
 NAILS + FACE + BOUTIQUE

- luxury & express mani pedis
- hard gel enhancements
- calgel & shellac
- personalized attention
- ultra sanitation
- holistic facials
- facial waxing
- event & bridal makeup
- makeup tutorials
- + we sell bikinis, jewelry, Dr. Hauschka skincare & more!! +

808 636 2451
www.nixiehawaii.com
 @nixiehawaii

HAIR
 by
 Lisa Frangipane

Master Stylist & Colorist
 Former owner of
 Salon Atlantis
 25 years experience
808 637 2511



come relax, pamper yourself & share good vibes

Come to our Grand Opening Winter Kickoff Party!!
 Oct 12th from 2pm - 6pm
 66 590 Kamehameha Hwy
 XCEL Building - Haleiwa, Hdl 96712
 Live music by Camile Velasco, Prizes, Giveaways, Mini Services, Food, Drinks + Fun!!

No job too big or small.
 Located at the Waiialua Sugar Mill.

**CERTIFIED WELDING
 FABRICATION & REPAIRS
 OF ALL METALS**

fab ab
 808
628.8719

SIX SPECIAL NIGHTS

MONDAY \$2.95 BEER BOTTLES & DRAFT	TUESDAY \$5.00 OFF PIZZA REGULAR OR LARGE	WEDNESDAY SALAD NIGHT 1/2 OFF SALADS
THURSDAY \$3.95 NIGHT \$3.95 SLICES, SALADS, MAI TAI'S, WINE & BEER	PIZZA BOB'S	SATURDAY \$4.50 NIGHT \$4.50 SLICES, SALADS, MAI TAI'S, WINE & BEER
FRIDAY NIGHT \$7.50 BURGER & FRIES		

Dine In Only - 4:00 PM Until Closing - Haleiwa Town Center - 637-5095

PLUS \$2.00 Off with this Coupon
Some Restrictions Apply. See Restaurant for Details.
 When Ordering Regular Priced Items. Good Anytime. One Coupon Per Person.
 Can Not Be Combined with Other Discounts. Expires 11/30/2013.

Halloween art projects

- Free Art Projects for Children Aged 7-12
- Pumpkin Face Painting & Decorating
- Halloween Mask Painting & Decorating
- Halloween Poster

Place: Waiialua Community Association
 66-434 Kam Hwy, Haleiwa
 (808) 637-4606

Date: Saturday, October 05, 2013 Time: 1:00p-2:00p
 Saturday, October 12, 2013
 Saturday, October 26, 2013



Registration required. Get forms at the WCA office.
 First come, first served, limited to 30 participants per class.
 Email oahu.artisans@yahoo.com for registration forms.



The Friends of Ali'i Beach Present:



THE 37TH ANNUAL NORTHSORE MENEHUNE SURFING CHAMPIONSHIPS

OCTOBER 19th, 20th, 26th & 27th

HALE'IWA, ALI'I BEACH PARK

SATURDAY

SUNDAY

- *TIME: 8:00 A.M. Please Come Early
- *ENTRY FEE: \$25.00 (ENTER ONE DIVISION ONLY) All contestants receive a contest t-shirt, lunch, goodie bag & other cool prizes
- *DEADLINE: Postmarked by OCTOBER 1ST NO LATE ENTRIES!!!
Drop @ Surf and Sea Hale'iwa by: OCTOBER 5TH
Please sign-up early, space is LIMITED...we will be accepting entries on a "FIRST COME, FIRST SERVED" basis. Slots could fill PRIOR to the deadline. Once we are FULL entries will no longer be accepted.
- *MAIL TO: Menehune Surf Contest P.O. Box 507 Hale'iwa, HI. 96712
- *MAKE CHECKS PAYABLE TO: FRIENDS OF ALI'I BEACH, INC.
- *INFORMATION: Contest Hotline: (808) 637-2544 (alii) @ 7am
Listen to Surf News Network @ 7am
- *WEBSITE: www.northshoremenehunesurfcontest.com
- *EMAIL: ivykaui@live.com

(Detach and Mail)

Name: _____ Phone: _____ Email: _____
 Address: _____ City/Zip: _____
 BirthDate: _____ Age On OCTOBER 19 2013: _____
 SurfBoard Sponsored: YES__ NO__

PARENT SIGNATURE: _____ DATE: _____

*The above signed parent or guardian and the participant release The Friends of Ali'i Beach, its officers, contest staff, event sponsors, the C&C of Honolulu and the State of Hawaii from any and ALL liability arising from bodily injury or property damage sustained during this event. Also, the above signed, do hereby grant FRIENDS OF ALI'I BEACH, its successors, assigns and licenses, unrestricted use of my image, my name, my personality and my voice in connection with the use of photography for any and all motion picture, promotional and commercial videos, radio and television purposes, internet, posters and/or performances thereof, including without limitation, the publicity in connection therewith.

CONTEST DIVISIONS: (Check ONE event only) AGE ON 10/19/2013: _____

KOKUA DIVISION: Boy____ Girl____ (For boys & girls, ages 3-6 who need help in the water or on the beach. Non-competitive, everyone receives a trophy)

SHORTBOARD DIVISION: (No Boards longer than 7'0") Check ONE only

- Boys/Girls 4-6 ____ (NO assistance)
- Boys 7-8 _____
- Girls 7-9 _____
- Boys 9-10 _____
- Girls 10-12 _____
- Boys 11-12 _____

LONGBOARD DIVISION: (boards MUST be at least 3' over surfers head, NO GUNS)

Check ONE only

- Girls 7-9 _____
- Girls 10-12 _____
- Boys 7-9 _____
- Boys 11-12 _____

MAHALO TO ALL OUR SPONSORS!!!

O'HANA AND FRIENDS OF WEST O'AHU presents the 2nd Annual

WEST-ERN O'AHU FESTIVAL

AT KALAELOA RACEWAY PARK



SATURDAY, OCTOBER 26TH, 2013

**GATES OPEN AT 4:00PM till closing - \$10 ADMISSION
ONLY \$5 WEARING WESTERN ATTIRE
(MINIMUM 3 ARTICLES OF CLOTHING)**

**Have a fun-filled evening with great music, ono food, taste sampling,
fun activities for the keikis, exciting entertainment, and more!**



Hawaiian Electric Company, Inc.
Giving you the power



ALL ISLAND
TOWING



Live Country Music



**KEIKILAND * PETTING ZOO * PONY RIDES * ALOUN
FARMERS MARKET * RACE CAR SHOWCASE**

COMPETE FOR CASH PRIZES IN:

**Most Outrageous & Ridiculous Belt Buckle * Daisy Duke Look-A-Like
Belly Flop * Moon Pie Eating * Baked Beans & BBQ Cook-off (Chicken, Pork
and Beef) * Truck Tug-O-War * Car/Truck Burnout Competition
Mechanical Bull Riding * Good Times Rodeo**

THE FINALE: 3rd Annual SMASH OUT CANCER DEMOLITION DERBY FOR BREAST CANCER AWARENESS

To register for these events, go to krphawaii.com

ALCOHOL/DRUG FREE EVENT NO PETS ALLOWED

West O'ahu Festival Discount Coupon

Clip this coupon to receive \$1.00 off admission

\$1 OFF

Valid only on 10/26/2013 for the West O'ahu Festival

Not combinable with other discount offers

\$1 OFF

Aloha Friends, Family and Supporters,

We are pleased to announce that the mural has entered a new phase of progress! We are honored and thankful to have received generous support from Vertical Technologies Hawaii. With their support, the support from our non-profit sponsor, website donations, painting fundraiser and your continued support, we will raise enough to complete the world's largest surf art mural!

We currently have \$2,100 raised online through our website and painting fundraiser. There is an additional \$1,000 donation. Vertical Technologies Hawaii has graciously donated the lift for the project. Vertical Technologies Hawaii has promised that if we can secure at least the \$2,105 pledged to our Kickstarter campaign from our supporters like you, they will cover a limited remainder of the costs of the mural project. As there are always additional / unforeseen costs for projects of this magnitude we are still accepting additional donations and corporate sponsorships to cover these additional costs.

Our Kickstarter campaign did not reach it's \$10,000 goal so your pledges will be cancelled and not fulfilled. Now that we are almost at our minimum goal towards completion we would like to ask you to instead give your donation directly to Hilton's website or send a check directly to us so that we can complete the project. We greatly appreciate you believing in Hilton and his dream to make this mural a beautiful reality. As a reminder your donation is tax deductible and after the mural is complete you will receive your gift and thank you letter for your tax purposes.

We have also set a date! Hilton will start the mural on October 19th and hopes to be completed



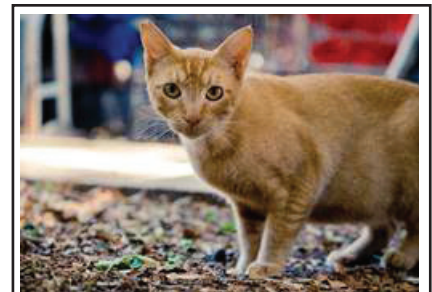
by October 27th. If you're in the area, please make sure to stop by! We will have art for sale at the event, a food drive to support Once a Month Church and North Shore News Foodbank and lots of activities for the kids!

You can send a check made payable to The Art of Hilton and send it to 56-193 Pualalea Street, Kahuku, HI 96731. (This is preferred to avoid administrative fees for online payments.) OR

You can visit www.theartofhilton.com, click on shop online, click on Mural Fundraiser, choose the amount you would like to donate and follow the directions for payment online. Spread the work and let your friends and family know we still need additional support to ensure we reach our goal and cover costs to make this event complete.

Thank you so much for your support and if you should have any questions feel free to email us at Hilton@theartofhilton.com or call us at 382-2098.

Watch Vertical Technologies on Youtube: <http://www.youtube.com/watch?v=IqVGkPQub-E>
Hilton and Jessica
The Art of Hilton
www.theartofhilton.com



Hawaiian Humane Society partners with Petco Foundation to present the cat trap depot conference on November 9, a conference for caring for feral cats. The conference will be held in the Ward Warehouse Conference Center, Saturday, November 9, from 8am - 5pm. Registration is required and ends October 9, the cost is \$10.00 and includes breakfast and lunch. Each participant who pays the fee and stays the entire program will receive a TruCatch Trap compliments of Petco. to register visit HawaiianHumane.org.



VERTICAL TECHNOLOGIES

Aerial Lift Sales, Rental and Training Specialists!

New Billing & Physical Address!
1024 Kikowaena #D
Honolulu, HI 96819
(808) 841-4700

PARTY in pink™



ALL FUNDS RAISED GO TO THE NEW ZUMBA® GLOBAL RESEARCH GRANT FOR BREAST CANCER PREVENTION

PARTY PREVENT PREVAIL

LET'S GIVE IT ALL WE'VE GOT TO STOP BREAST CANCER

#PARTYINPINK

JOIN US FOR A PARTY IN PINK™ ZUMBATHON® CHARITY EVENT

HOSTED BY Jennifer Jensen & Luana Owan	October 4, 2013	Turtle Bay Resort
	7:00 pm - 9:00 pm	57-091 Kamehameha Hwy
WHY DO YOU PARTY IN PINK™?	JLFitnessHawaii@gmail.com	Kahuku, HI, 96731, US



partyinpink.com

zumba.com

facebook.com/JLfitnesshawaii

In connection with Zumba Fitness' Party in Pink™ 2013-2015 program, Zumba Fitness is guaranteeing a minimum donation of \$3,000,000.00 to Susan G. Komen for the Cure™. From July 15 - October 31 of each year of the program, Zumba Fitness will donate to Komen 75% of each Zumbathon Party in Pink Ticket Fee collected for Zumbathon® events held by ZNF™ members (67% in the event the ticket fee is paid to Zumba via PayPal), at least 25% of each Zumbathon Ticket Fee collected for Zumbathon corporate charity events, 100% of all individual donations received, and 30% of the retail sales price of Party in Pink Zumba® wear. 100% of the guaranteed minimum donation of \$3,000,000.00 received by Komen in connection with this program shall be applied directly to the Zumba Global Research Grant for Breast Cancer Prevention.

Copyright © 2013 Zumba Fitness, LLC | Zumba®, Zumba Fitness™ and the Zumba Fitness logos are trademarks of Zumba Fitness, LLC.

Pediatric Dentist & School-Based Health Center in Kahuku

Koolauloa Health Center (KHC) now has a pediatric dentist, Dr. Sena Hiradate, and has also opened its school-based health center at Kahuku High & Intermediate School.

“Dr. Sena” joined KHC July 15th and provides comprehensive dental care (cleaning, fillings, sealants) at KHC’s Kahuku site. She is a native of Los Angeles and did her undergraduate and dental program at the University of Southern California. She did her pediatric residency in Hawaii at Waianae Coast Health Center and Kokua Kalihi Valley. During her residency, she fell in love with Hawaii and its people and children. She decided to stay and work here. She provides dental services for children ages 6 months (or after first tooth) up to 12 years old. She enjoys running and is currently training for the Nike’s Women’s Marathon in San Francisco in October and the Honolulu Marathon in December. She does crossfit, loves to sing, and is learning to surf. She is fluent in Japanese. For appointments, call 293-2537.

The school-based health center opened its doors for medical and dental services at the beginning of this school year. It has 2 medical exam rooms and 2 dental operatories. It is staffed by a physician assistant, Leighton Kaonohi, a medical assistant, Michelle Keliikuli, a dentist, Dr. Pat Mason-Dozier, and a dental assistant, Donna Kalei. They provide services during the school day, 7:30-3:30. Dental services include exams, x-rays, cleaning, fillings, extractions, crowns and root canals. Parent/guardians must sign consent forms prior to students receiving services; these forms are available at the school and at both health centers in Kahuku and Hauula. For appointments or information, call 454-7447.

SALON LA SIRENA

Grand Opening Special

Full Highlight & Haircut \$100

First time clients

A new eco friendly,
Green Salon on the North Shore

Owner Gina Walker

Haircut, Highlight and Color Specialist

Hairdresser to the Stars from
Malibu, CA. 20 yrs. experience.

Call for a free consultation

Shop 637-6869

Cell 375-3984

North Shore Recycling Service

*Curbside recycling pickup services
for homes and businesses*

- Two pickups per month at only \$24 per month (2 curbside recycling bins included)
- 100% of the recyclable donated to non-profit organization

Visit us at www.ocr2000.com

To sign up call us at 262-2724 or
email: recycle@ocr2000.com



Call for daily specials

840-0223

Phone orders welcome

Come and enjoy some local kine grindz!!

Located next to Haleiwa Post Office



**Professional
Tattoo
&
Body Piercing
Studio**

Located in the
Waialua Shopping Center
Near the
Old Sugar Mill

808-312-3444

Custom Designs · Re-Do's · Cover-Up's · Free Consultation

oahutatooink.com

Colleen Spring Named 2013 Hawai'i History Teacher of the Year

Grace Lo

Colleen Spring, a teacher at La'ie Elementary School in La'ie, Hawai'i, has been named the 2013 Hawai'i History Teacher of the Year. The award is co-sponsored by the Gilder Lehrman Institute of American History, HISTORY® and the Advisory Council on Historic Preservation on behalf of its Preserve America program, and administered locally by the Hawai'i Council for the Humanities.

Spring has been teaching at La'ie Elementary School for over 20 years. She has taught a wide range of grade levels and core subjects including American history, the U.S. Constitution and world history. A couple of years ago she initiated and coordinated the We the People, the Citizen and the Constitution curriculum for the school to assist all fifth-grade students in becoming informed citizens who participate in the democratic process. Under her leadership La'ie Elementary School's students have earned the special distinction of being the only fifth graders on O'ahu to participate as a showcase group at the We the People state competition. She has also been instrumental in promoting National History Day at La'ie Elementary School. "Colleen has been a leader in introducing elementary school students to the importance of learning from primary source documents and using these to create History Day projects, especially performances, that show the power, relevance, and contemporary significance of history," said HCH Executive Director Bob Buss. For the past five years her students have qualified for and competed at the National History Day contest at the University of Maryland in College Park. She has helped a number of students reach their History Day project goals as well as gain a greater appreciation for historical research through primary and secondary documents.

"Mrs. Spring is an extraordinary U.S. history teacher," said Lea Albert, complex area superintendent for Castle-Kahuku. "Her high expectations, energy and skill serve to create an environment where U.S. history flourishes and student projects are remarkable for their quality."

Spring will be recognized as the Hawai'i State History Teacher of the Year at a special awards ceremony, sponsored by HCH and the Hawai'i Department of Education, to be held on Wednesday, October 2, at La'ie Elementary School, 1 p.m. She will receive a \$1,000 honorarium and will be in the running to be named the 2013 National History Teacher of the Year this fall. La'ie Elementary School's library will receive a core archive of history books and educational materials from the Gilder Lehrman Institute of American History and HISTORY®. Spring will also be invited to a 2014 Gilder Lehrman Teacher Seminar and La'ie Elementary will be named a Gilder Lehrman Affiliate School.

"This award gives us the chance to recognize great

history teachers across the country," said Lesley S. Herrmann, executive director of the Gilder Lehrman Institute of American History. "It puts exceptional educators front and center."



Colleen Spring

NOW OPEN IN HALEIWA TOWN



10% OFF

60 Min Massage

** Includes neck, Head, Shoulders, & Back**

With this coupon

66-437 Kamehameha Hwy
Suite 101A
(next to Haleiwa Post Office)
(808) 366-1308

NORTH SHORE
FOOT MASSAGE

Call for an appointment




SALON LA SIRENA

An Eco Friendly Green Salon

Eco-Fin Organic Grand Opening Specials

Full Highlight & Haircut w/Style \$100

Mani/Pedi \$40

Michele Popek formally of NS Salon & Spa

723-1366 637-6869

Waialua Shopping Ctr. across from Jerry's Pizza




Blood Bank of Hawaii

Starve a vampire this Halloween season; donate blood. It's the blood on the shelves that saves lives. Help make sure the state's blood supply doesn't get spooky low by getting the word out to volunteer donors about October blood drives.

Saving lives is now easier than ever. In addition to calling (808) 848-4770, you can schedule an appointment or check on drive information at www.BBH.org.; Listed below are the October blood drives on the north shore of Oahu. Please note: drives are subject to change.

Wednesday, October 9

BYU Hawaii, 55-220 Kulanui St, Laie (96762) - Ballroom
9:30 am- 4:00 pm

Thursday, October 10

BYU Hawaii, 55-220 Kulanui St, Laie (96762) -
Bloodmobile - 9:30 am- 4:00 pm

Saturday, October 26

Laie Shopping Center, 55-510 Kamehameha Hwy
(96762) - Bloodmobile - 7:30 am-11:00 am

Sign up to save lives today. The requirements to be a blood donor are simple:

- Be in good health
- Be 18 years of age or older (17 with signed Blood Bank of Hawaii parent/legal guardian consent form)
- Weigh 110 pounds or more
- Bring a valid photo ID with date of birth

Please call Blood Bank of Hawaii at (808) 848-4770 or visit www.BBH.org for more information or to make an appointment.



North Shore News

2013 Schedule

PUBLICATION DATE	EDITION	DEADLINE DATE
October 16	#21	October 3
October 30	#22	October 17
November 13	#23	October 31
November 27	#24	November 14
December 11	#25	November 29


Direct-Mailed to Every Home
MOKULEIA • WAIALUA • HALE'IWA • KAHUKU • LAIE
Every Other Wednesday
12,000 copies

"The North Shore's most popular publication" since 1970
(808) 637-3138 • NShoreNews@aol.com

BULLETIN BOARD

WINDOW CLEANING
BPWC
"Catch Our Wave"
DA BESTEST WINDOW CLEANERS ON DA NORTH SHORE... FO' SHUA!
#4577600
www.bpwcHI.com

 **Ernie Doak Plumbing, Inc.**
Quality without Compromise
NEW CONSTRUCTION • RENOVATION • SOLAR
Serving Oahu's North Shore for over 20 years
ERNIE DOAK cell 295-7943
Lic. #CT-22113 office 638-8620
Lic. #PJ-10630 erniedoakplumbing@yahoo.com

www.oahuscreens.com
 **HOLOHOLO SCREENS, LLC**
New window installation Sliding/swinging doors
New screens/re-screens Screen door roller repair
Pet proof screens Pet grills and doors
Porch enclosures Solar screens
FREE ESTIMATES • (808) 783-8764

ILAN FREITAS
c: 808 372-8848
a any part of the island
e greenwaveslandscaping@yahoo.com
 yard maintenance
grass planting
sprinkler system installation & repair
landscaping design & renovation
dirt removal
commercial & residential
no jobs are to big or too small

"THE BULLETIN BOARD THAT IS IN EVERYONE'S HOME"

BULLETIN BOARD



Featuring the largest selection of certified organic produce on the North Shore. No panic...ours is organic. Open 7 days. Mon.-Sat. 9am-7pm. Sun. 9am-5pm

66-445 Kam. Hwy
Haleiwa, Hawaii 96712
Next to the Post Office
808-637-6729 • 808-637-1922 fax



DR. PORTER TURNBULL
Chiropractic Orthopedist
(808) 638-8740
Appointments available Mon.-Sat. (evenings by appointment)

- Industrial accidents & auto injuries
- Sports injuries • Spinal care
- Safe, Effective, and Gentle

N-C PLUMBING & SUPPLY

Cont. Lic. No. C-8913



- RESIDENTIAL & COMMERCIAL SALES & SERVICE
- CONTRACTING & DESIGN • HOME PLUMBING SERVICE
- PLUMBING FIXTURES, HEATERS • FREE ESTIMATES

Nestor P. Calilao (Owner)
P.O. Box 769
Waialua, HI 96791

Bus: 637-8662
Res: 638-5157
Cellular: 372-8718

email: nncplumbing@hawaii.rr.com



Jay Oku
Loan Officer

(808) 393-0707
Office: (949) 281-3076

jay.oku@academymortgage.com
academymortgage.com/jayoku

1833 S. Coast Highway, Suite 210, Laguna Beach, CA 92651
NMLS #218211 | State Lic: CA #CA-DOC218211, HI #HI218211
Corp Lic: CA #4170013, HI #HI-3113 | Corp NMLS #3113 | Licensed by the Department of Business Oversight under the California Residential Mortgage Lending Act



Restaurant & Margarita Bar

- DAILY SPECIALS -

Island Fresh Fish Tacos
Premium Margaritas

Large Parties Welcome Open Daily 9:30am - 9:30pm
637-3059 • North Shore Marketplace • Haleiwa
www.CHOLOSMEXICAN.com



LIC. #AG 18275

GENERAL ENGINEERING CONTRACTOR

Full Service Sitework
Contractor

Septic Systems & Tanks
25 yr. exp.

Michael Cowper 638-7200
cowperhawaii.com



Factory Showroom also available
... Lost, South Point NSP & Accessories
Located at the Sugar Mill
638-0050 • 366-2282
www.SCHAPER-HAWAII



License No. C28113

Commercial • Residential
Septic • Solar • Design

Mike 630-1407
Steve@offshoreplumbinginc.com

Munden Design & Build

Lic.#BC19632

Design • Plans • Permits • Construction
Additions & New Residences

808 391-8616

Providing quality work since 1978

J.B. TILE & CARPET

JOHN BURTCH

Free estimates
25 years experience
(808) 226-1023



THE BIG GREEN GIANT

Edith

The big green giant papaya, originally from the tropics of Central America, can grow up to twenty inches long and weigh up to twenty pounds. The Spanish explorers brought the giant, known as the Mexican papaya, to the Philippine Islands where it traveled to South East Asia. When ripe, the giant papaya's flesh turns yellow or orange but is not as sweet as the smaller Hawaiian papaya.

The smaller papaya, 'Solo', was cultivated in Hawaii from a small fruit found in Barbados. 'Solo' was bred for sale and exportation. Other varieties developed in Hawaii are Waimanalu, Kapoho, and Sunrise. A papaya is a good source of vitamins A, B, and C. (Purdue University Crop Research) The big green giant papaya is used as a vegetable in Asian cuisine and can be purchased directly from the farmers at the Waialua Farmers' Co-op Market at the Old Waialua Sugar Mill.

Waialua Fresh Green Papaya Salad

1 lb shredded green papaya
4 cherry tomatoes (thinly sliced)
½ garlic clove
2 tbs crush peanuts
1 Thai fresh chili
2 tsp palm sugar
4 tsp fish sauce
1 tsp tamarind paste
1 lime

Pound garlic, chilies, and peanuts in a mortar and pestle. Add the juice of 1 lime, tamarind paste, fish sauce and sugar. Fold in shredded green papaya and tomatoes. Continue pounding and folding until papaya is coated with dressing. Add more chili, sugar, fish sauce, tamarind or lime according to taste. Makes three servings. Papaya grater, mortar and pestle and other ingredients are available at Waialua Fresh Produce Store. Phone 637-2379.

Chicken with Green Papaya (Filipino)


2 tbs minced fresh ginger
2 lbs chicken (cut into bite size pieces)
2 tbs patis (fish sauce)
Salt
Water
1 green papaya (peeled and cubed)
Into a large pot put chicken pieces and enough water to cover chicken. Bring to a boil, then add ginger and fish sauce. Reduce heat and simmer for 30 minutes, stirring and skimming off fat and scum. Add papaya and simmer another 5 minutes or until papaya is tender. Remove from heat, salt to taste. (Francis BarBQ Chicken. Phone 271-2045)

Cooking demonstration with Chef Lisa Albrecht of Something Special. Phone 271-0312
Waialua Farmers Co-op Market on Waialua Sugar Mill grounds
Saturday, October 12, 2013 at 11:30 A.M.

MAHALO!
From the
North Shore Food Bank
donations of non-perishable
canned
goods are accepted at the
North Shore News Office
637-3138




Coffee!
You can sleep when you're dead!



6:30 AM - 8:00 PM
NORTH SHORE MARKETPLACE
WWW.ROASTMASTER.COM

WAIALUA FARMERS' COOPERATIVE MARKET

HISTORIC WAIALUA SUGAR MILL GROUNDS
Saturdays 8:30am - 1:00pm

Buy Directly From Our Local Farmers
TWIN BRIDGES FARM
KAHUKU FARMS
WAIALUA FRESH

DEL TROPICAL FLOWERS
T & L FLOWERS AND PALMS
WAIALUA COOPERATIVE FARMERS
FIELDS OF ALOHA

TASTE OUR WAIALUA FOOD PRODUCTS
FRANCIS BARBQ CHICKEN
NONI FRUIT LEATHER & LOTION
KALENA POLYNESIAN FOODS & CRAFTS
SOMETHING SPECIAL TARO CAKES & BISCUITS

NORTH SHORE GOODIES
The original coconut peanut butter
AND MORE

A FARMERS' MARKET MANAGED BY
FARMERS
Edith 637-8589



The North Shore News is published every other Wednesday and mailed free of charge to all North Shore homes and businesses. Extra copies may be obtained at our office.

PRESS RELEASE POLICY: Submit press releases in person or by fax, mail or email to Editor, North Shore News, 66-437 Kam. Hwy., Suite 210, Haleiwa, HI 96712. Please type your releases and keep them shorter than 200 words unless they are of an unusual news interest. Releases should be viable news stories and are published on a **space available basis only**, with priority given to those received in our office first. You may attach photos. We are not responsible for the return of any photos. All materials are submitted at owner's risk. We reserve the right to edit and/or refuse all submissions including advertising.

EDITORIAL POLICY: We welcome articles and letters from our readers. Letters to the Editor are published on a space available basis only and preference is given to shortness of length, and quality of content. We prefer to run not more than one letter, per person, per 6 month period. Letters subject to edit.

Views expressed by our contributing writers and advertisers do not necessarily reflect the view of the management and staff of the North Shore News. All rights reserved. Reproduction in whole or part without permission is prohibited. © 2013.

Editor & Classifieds

Linda Seyler

Typography

Downtown General Store

Contributing Writers

Betty Depolito
Naty Hopewell
Choon James

City Councilman Ernie Martin
State Representative Lauren Cheape
State Representative Richard Lee Fale



Please recycle this newspaper.

CLASSIFIEDS

SERVICES

SHORE ELECTRICAL SERVICE

New Const-Remodels
638-0049 / Lic#C20777

Dog/Cat Nail Trimming

at your home only \$15.00
Call Julie 637-5395

Lawn Care For You

Mowing, Trimming, Light Hedging
Call Thomas 637-5839

PARADISE PLUMBING INC.

New Const • Repairs • Remodels
808-368-1473 / Lic. 29856

Handyman Services

Remodeling, Carpentry, Floors,
Concrete, all parts of Construction
Call Bob "The nicest guy in the
business" Ph. 282-2812

Greekz Plumbing LLC

Complete Service & Repair
Camera inspection/drain cleaning
"Got a leak? Call Steve the Greek"
808-372-1820 Lic#32939

Haugan Construction LLC

Build & Repair • Big & Small
Let's Talk
Steve 542-9269

North Shore Pumping

Septic and Cesspool Service
Clifford 638-0900 • 291-5099

Computer Problems?

I can fix any MAC or PC.
Chris 371-3089

Need Help In English?

Certified English tutoring available for students in college and high school. References and work examples available upon request. If you have any questions or would like to arrange an appointment. Please call: Jefferson Speer @ 808-386-2679 or email at www.Jefferson.speer@gmail.com

EXPERT ELECTRICIAN

Fans, Emergency Services, etc.
Jim Richards 371-9369

Waybow Window Washing

Let the sunshine in.
Residential • Commercial
• New Construction
Free estimates. Call 223-4034

Paumalu Electric Inc.

C 18074

Residential & Commercial
New Installation & Repairs
Renovations. Remodels
Electric Meter Replacements
Complete Install for Solar PV
Dave Hancock 638-9054

BOW WOW BUNGALOWS

Licensed Boarding Kennel
North Shore, Oahu
Reasonable Rates
Ph. 637-2562
These Dogs Have Fun!

HARVEY'S REPAIR, LLC

24 hrs Towing Service
Specializing in opening
locked car doors
Call any time 478-0333

LEARN TO SWIM

AT THE

HAWAII SWIM SCHOOL

ON THE NORTH SHORE
Developing swimmers since 1982
Haleiwa Rd. at Smiley Place
637-4863

SHIATSU • LOMI

Aromatherapy
Milica Barjaktarovic
Lic # MAT8348
351-0848
HumanRemodeling.com

BIKRAM YOGA

End of Summer Special!
7 p.m. classes \$10
thru September!
Call for class schedule
637-5700

Your Clean Home

Vacation/Residential
Home Cleaning
Affordable • Reliable
• Green Cleaning
For Free Estimate
Call 638-0262 or 782-9941

BOBBY'S BODIES

Tuesday evenings at 5:00 p.m.
• Body Toning
Friday mornings at 9:00 a.m.
• Cardio Pump/Fat Burner
For more info: call Bobby, owner of
BOBBY'S BODIES at 637-4150

Aloha Computer

PC Repair/Virus Removal
Fax/Copy/Internet Access
372-2667 or 237-4558

REAL ESTATE NEEDS?

Call me . . . Dee,
Your NS Realtor
Dee-Ann KML
Kekahuna, RA
808-780-3249

Golden Rule Lawn Care

Mowing, weed whacking,
hedge trimming, rake up,
light weeding & haul away.
Call Matt 269-5020

PIANO LESSONS

Guitar, Ukulele, Bass,
Songwriting
637-4635

HOW TO CONTACT THE NORTH SHORE NEWS

Letters to the Editor, and other items submitted for publication consideration may be sent to us via:

MAIL: 66-437 Kamehameha Hwy., Suite 210, Hale'iwa, HI 96712

E-MAIL: NShoreNews@aol.com • FAX: (808) 637-8862

PHONE: (808) 637-3138

Office Hours: Monday-Friday 10 a.m.-3 p.m.

www.northshorenews.com

CLASSIFIED ADS

Next Issue - Oct. 16, 2013
Deadline Date-Oct. 3, 2013

GERMAN CAR SERVICE
Professional-Qualified
Technician
Call Gary
637-6800

J&L Services Haleiwa
Quality Landscape and
Garden Maintenance. Also
Pressure Washing, Hedges
and Plant Installation.
Call 673-1384 for est.

ANGELS PLUMBING
Repairs
Remodeling
Renovation
638-7878
Lic. #C12004

THE LAWN RANGER
Lawn Maintenance
no yard too hard
no lawn too far gone
We mow betta
258-6439 Dan Fatchett


Business Services Center
Fast & convenient fax, copy,
scan, computer/internet,
laminates, etc.
Across from Haleiwa post office.
637-4558 or GoNorthShore.org


Marianne Abrigo, Properties
Specializing in -
North Shore
Real Estate
Ask for our list of avail-
able properties and/or a
free market analysis.
Marianne M. Abrigo
"Realtor since 1974"
Office **637-3511**
Fax **637-0777**
Email **mabrigo222@aol.com**

NORTH SHORE AUTO DETAILING
Package #1 • \$50.00
Wash, wax, vacuum interior,
dress interior, dress tires
Package #2 • \$70.00
Wash, wax, water spot removal,
vacuum interior, dress tires
Vans, SUVs, Custom 4 Wheelers,
Glass water spot removal, extra (all packages)
Price may change on the condition of vehicles
interior and exterior
We are mobile we come to you
Call Billy 371-0854 or DJ 492-5887

Minor Skin Irregularities?
Stubborn Acne?
Adult & Teens • Skin Irregularities
Call **748-1448**
Skin Classic &
Face Reality Specialist
Free Consultation

Individual & Family Therapy
• Grief & Loss • Habits & Addiction
• Life Challenges & Transitions
• Clinical Supervision
Curielle Duffy, MA, MSW, LCSW, CSAC
808.633.3437 www.liferecovery.pro

N.S. Property Maintenance
Power wash, painting int/ext,
deck repairs, extensions,
fences, gates,
carpentry & remodels.
Maintenance, lawn & yard.
Chris 381-5213 / 638-0659

HELP WANTED
BUSSERS/SERVERS
Pizza Bob's in Haleiwa is looking
for BUSSERS/SERVERS. Experi-
ence preferred. Apply in person
at 66-145 Kam. Hwy.

COOKS/KITCHEN HELP
Pizza Bob's in Haleiwa is looking
for kitchen personnel. Experi-
ence preferred, but will consider
training the right people. Apply
in person at 66-145 Kam. Hwy.

Retail Sales
Surf & Sea
Hawaii's Ocean Sports Headquarters
is always looking for hard working,
energetic people to become a part
of our sales team. Good pay, bonus,
benefits. Ocean sports experience
and/or bilingual a plus. Apply in
person daily 9am-7pm
62-595 Kam. Hwy., Haleiwa

For Advertising Rates
Call 637-3138 or go to
www.northshorenews.com

Part Time Secretary
Must have computer skills
and high speed internet
access.
Fax resume to 638-7643

FOR SALE
Unusual Beads
Antique Bottles
Glass Fishing Floats
Hawaiian License Plates
Coca Cola
Collectibles
Jewelry
Insulators
Port Holes
Nautical Items
Hawaiiana
Antique Show Cases
**Kahuku's Largest
Antique Store**
293-1295

MISCELLANEOUS
Classified Ad Rates
3 lines (min.) \$18.89
4 lines \$25.13
5 lines \$32.45
1" Box Ad \$41.88
(29 characters in each line)
Include your contact information.
**Ads can be dropped off in mail slot,
mailed, or emailed. Pay by check pay-
able to: North Shore News or credit
card by phone order.*
We reserve the right to refuse any
advertisement with a full refund.
North Shore News • 66-437 Kam. Hwy.,
Suite 210, Haleiwa, HI 96712
• (808) 637-3138 • NShoreNews@aol.com

**North Shore Menehune
Surfing Championship
Special Edition**
October 16, 2013
Deadline October 3, 2013

**Voice of God
Ministries**
Jesus Loves You
If you need Prayer
Call 808-373-0294

**Please Report Stranded
Sea Turtles**
Call 983-5730 • Mon.-Fri., 7am-4pm
288-5685 pager wkends, holidays
587-0077 and after hours
Suspected Law Violations
541-2727 or 800-853-1964
NOAA Fisheries DLNR-DOCARE

Jerry's Pizza
637-8866
Fresh Pizza
Delivery in Haleiwa

OFF da ISLAND
Are you leaving Oahu on vacation or
business? Do you live on a neighbor
island, the mainland or foreign coun-
try and subscribe to the North Shore
News? Try send us a photo of someone
in front of a sign or landmark holding
a copy of the NSN. Email your photo
along with the person or persons'
name, community of residence, tele-
phone number and photo location to:
NShoreNews@aol.com. Or, mail to
OFF da ISLAND Photo, North Shore
News, 66-437 Kam. Hwy., Suite 210,
Hale'iwa, HI 96712. We cannot return
photos so please send us a copy. Photos
received become the property of NSN.
Preference and priority will be given to
emailed photos.

**Statewide Hotline
for Litter**
1-888-592-2522
Callers need to provide:
1. License plate number
2. Make and model of
vehicle
3. Date and time and
location
4. What was thrown/
blown

Wanted bodywork repair person
& electrical work needed for a
1962 Willys Stationwagon,
226 Flathead Super
Hurricane motor.
Contact JR 808-343-8287
"In memory of Jack Wilson"

HE LEI, HE ALOHA
This is the lei of love,
The legacies of Queen
Lili'uokalani celebrates
her music,
love of homeland
and complete dedication to
the people of Hawaii.
Tuesday, October 8, 6pm
at Kahuku Public
& School Library.

**Clean Stream
Hotline**
768-7890

Malama Market Haleiwa:
Open Daily 7 a.m.–9 p.m.
(808) 637-4520

Malama Market Makakilo:
Open Daily 6 a.m.–10 p.m.
(808) 672-9955



Valid Dates:
10/2/13–10/8/13

Deals of the Week!

Korean Golden Pear

\$1.49
LB.



Rib Eye Steak
Bone-In, Value Pack

\$6.99
LB.



Coca-Cola
Selected Varieties,
12/12 oz.

3/\$13



Gatorade
Selected Varieties,
32 oz.

5/\$5



Spam Luncheon Meat
Selected Varieties,
12 oz.

\$1.99



Lay's Potato Chips
Selected Varieties,
9.5–10 oz.

2/\$6



DiGiorno Rising Crust Pizza or Pizza Dipping Strips
Selected Varieties,
11.5"

2/\$12



Pepsi
Selected Varieties,
2 Ltr.

\$1.50
EA.
MUST BUY 2!



Japan Bread
White or Wheat,
23.5 oz.

\$2.99
EA.



Hawaiian Eateries Salad or Shredded Coleslaw
Selected Varieties,
Prepacked, 1 lb.

\$4.49
EA.



Corona or Heineken
18 Pk. Bottles
or Rolling Rock, Pabst Blue Ribbon,
or Keystone
30 Pk. Cans

\$19.99

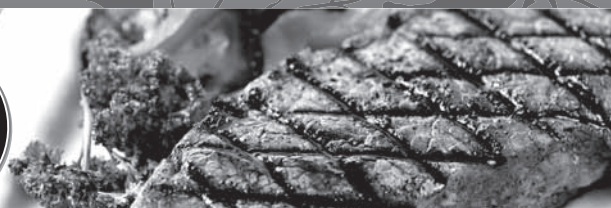


Thursday

Grilled Steak Lunch

7–8 oz. Steak, Rice, Tossed Salad, Drink

\$7.99



Hawaii Beverage Fee: Hawaii Beverage Fee of 1.5¢ per can or bottle will be added to purchase price at checkout. An Additional Hawaii Deposit fee of 5¢ will be charged for all specially marked beverage containers.

Limit five units (mix/match) per purchase, unless otherwise specified. We reserve the right to limit quantities. No sales to dealers. Prices plus applicable state tax. Hawaii EBT cards welcomed.