



**"E Ala Na Moku Kai Liloloa"**

**North Shore Menehune Surfing Championship  
How It All Began...**

*Story on Page 12*

1st Annual Menehune Champs (below)  
October 22 & 23 1977  
Ali'i Beach  
Surfer: Derek Ho • Poster: Chip Lane



NORTH SHORE NEWS October 16, 2013 VOLUME 30, NUMBER 21

# MENEHUNE MADNESS!



Back Row: Rusty Keaulana, Wesley Freitas, George Lagua, Arn Van Dyke, Trent Johnson. Front Row: Sam Fenwick, Josh Ward, Jason Hoey, Erin Grabarack, Michael Walsh, John Rack. Photo: Marilyn Walsh.

## 1st Annual North Shore Menehune Surfing Championships

66-437 Kamehameha Hwy., Suite 210  
Hale'iwa, HI 96712

PRE-SORTED  
STANDARD  
U.S. POSTAGE PAID  
Honolulu, Hawaii  
Permit No. 1479

PROUDLY PUBLISHED IN  
**Hale'iwa, Hawai'i**  
**Home of the NS Menehune  
Surfing Championship**



(Front row: Marianne Abrigo, Gere Choo, Molly, Mike Miura, Tony Nacapuay, Jenny Vierra, Dwight Ishiguro. Back row: Kathleen Pahinui, Sen Clayton Hee, James "Bla" Pahinui, Captain Mark Ward (ret), Gary, Officer Jerry Scoville, Lee Bryant, Mana)

## Puuiki Cemetery Gets a New Lawnmower

Friends for Waialua Town helps raise money to purchase a riding lawnmower for the caretakers at Puuiki Cemetery.

For a number of years, a small but dedicated group of men, Gere Choo, Tony Nacapuay, Mike Miura and Dwight Ishiguro have been caring for and restoring Puuiki Cemetery. Most of their work has been done by hand and but as gravesites have been uncovered the cemetery has almost grown close to its original boundaries. This has made keeping the grass manicured a larger task. Gere Choo, one of the caretakers, reached out to Officer Jerry Scoville inquiring about a new riding lawnmower. Officer Scoville contacted Lee Bryant from North Shore Equipment who generously offered to sell a lawnmower at cost.

Officer Scoville then called on Friends for Waialua Town and asked for help in raising the money to acquire the lawnmower. FWT put the call out for donations from members of the community and within a month \$2,000 was raised. Senator Clayton Hee assisted by securing a generous contribution from Princess Abigail Kawananakoa. Her donation covered the entire cost of the lawnmower. Other donations from Council Chair Ernest Martin, Reed Matsuura, Tammy and Carolyn Acoba helped start a fund that will help provide landscaping equipment for the caretakers.

We are deeply grateful to Gere Choo, Tony Nacapuay, Mike Miura, Dwight Ishiguro, and for the people who have supported preserving this very important part our community's plantation history. They are also working to landscape the perimeter of the cemetery and are in need of plants that do not require much water. If you are interested in support-

ing the cemetery – please send your donations to Friends for Waialua Town, PO Box 538, Waialua, HI 96791.

### The Haleiwa Family Dental Center, Ltd.



presents

### "Comfort Dentistry"

including—

- Relaxation Glasses
- Television Glasses
- Caring Staff
- Special Medication to help you relax
- Laser Cavity Detection
- New Patients Welcome!

Your teeth are much too important to neglect.

**Call: 637-9652**  
for your reservation

We're conveniently located behind First Hawaiian Bank  
in the heart of Haleiwa.



# BALI MOON

## HAWAII

# Moving Sale!

**AFTER 15 YEARS WE ARE CLOSING OUR RETAIL LOCATION AT THE HALEIWA TOWN CENTER.**

**COME BY AND VISIT US FOR GREAT DEALS.**

LARGE INVENTORY OF TABLES, CHAIRS AND LOTS OF BOAT WOOD, TEAK AND MAHOGANY FURNITURE.

HELP US TO CLEAR THE SPACE BY OCTOBER 31.

~ MAHALO TO ALL OUR LOYAL CUSTOMERS ~

**WE BUILD CUSTOM FURNITURE ACCORDING TO YOUR NEEDS**

WE WILL STILL BE OPEN ON A DAILY BASIS AT OUR  
**WAREHOUSE LOCATION**

**> 66-935 KAUKONAHUA, WAIALUA, OLD OILS OF ALOHA BUILDING, NEXT TO PAA'LA KAI BAKERY**



*Come by and visit us on the NorthShore; we are here to listen and help you to furnish your home, create custom furniture according to your vision, or simply assist you in finding the perfect souvenir for the loved ones at home.*



**VISIT US ONLINE: [WWW.BALIMOONHAWAII.COM](http://WWW.BALIMOONHAWAII.COM)**

66-145 Kam. Highway. Haleiwa. [balimoon1@aol.com](mailto:balimoon1@aol.com). 1.800.663.0378 or 808.637.0012

# Farmer & Food Producers Free Workshop

October 20, 2013

Overview of FDA Proposed Food Safety Regulation Rules

Public Comment Period Closes November 15, 2013.

West Oahu County Farm Bureau's, North Shore Ag Committee, in joint collaboration with the North Shore Chamber of Commerce Ag Committee, will hold a free informational workshop on The FSMA, Food Safety Modernization Act, FDA Proposed Rules for Current Good Manufacturing Practices and Hazard Analysis and Risk based Preventive Controls for Human Food and Standards for Growing, Harvesting, Packing and Holding Produce for Human Consumption.

**The Key Speaker will be Hartono & Co LLC. Workshop will cover the Following:  
Food Safety Modernization Act Background • Proposed New Rules (Overview)  
Produce Safety Rule • Certified Auditor Rule • Exemptions: Overview • Compliance Timeline**

What: FDA Food Safety Proposed Rules

When & Where: October 20, Sunday, 2-5 pm Waiialua Community Association No Charge

66-434 Kamehameha Hwy, Haleiwa, HI 96712

Gym located across from Haleiwa Post Office

Attendees will receive a certificate for attending this free educational workshop. Bring sample of your washed ready to eat produce for confidential swab test, to know how effective your current cleaning solution works to eliminate agents that can cause food borne illness. Inovigreen will be demonstrating 100% chemical free Lotus Aqueous Ozone Sanitizer that kills pathogens faster than chlorox bleach. It is EPA, FDA, USDA Organic and OSHA approved. For more information on this workshop, call the North Shore Chamber of Commerce at 637-4558 or Jeanne Vana, West Oahu County Farm Bureau, North Shore Ag Committee, at 389-6255 Complimentary refreshments provided by Pioneer Hybrid



**SAVE THE DATE!**

**NORTH SHORE OUTDOOR CIRCLE**  
PRESENTS THE  
**HARVEST MOON DANCE**  
**SATURDAY OCTOBER 26**  
8:00pm-11:00pm WAIMEA VALLEY PAVILION

**The Joe Green Band with Otis Schaper**

ADVANCE TICKETS ON SALE IN HALE'IWA AT  
KAI KU HALE 636-2244 & SURF N SEA 637-9887

Tickets \$20 in advance or  
\$20.00 at the door / 21 or older

**PURCHASE OF AN ADVANCE TICKET ENTITLES YOU  
TO ENTER A DRAWING AT THE DANCE FOR  
PRIZES!**



**Free Family Movie Night  
at Waiialua Community  
Association**



**Happy Feet**

Fun for the whole family!  
**Friday, October 18 at 7 p.m.**  
**FREE ADMISSION**  
Popcorn, Snacks & Sodas on sale

Co-sponsored by Aloha Care and WCA.  
For more information, call 637-4606  
[www.WaiialuaCommunityAssociation.org](http://www.WaiialuaCommunityAssociation.org)



# you are invited to the **FAMILY FALL FESTIVAL**

october 31 4-8pm

**kawailoa ranch | north shore**

everything is **FREE**

**keiki carnival • games • rides • food • candy**

cotton candy | entertainment on stage all night  
**bouncers • kettle corn • fun**

hosted by the mission & north shore christian fellowship



Artist Hilton will be painting the Largest Surf Art Mural in the World!

MURAL 01/101 - 101 PERFECT WAVES - INTERNATIONAL MURAL PROJECT - WWW.THEARTOFHILTON.COM



October 19<sup>th</sup> to 26<sup>th</sup> - 8:00 am to 7:00 pm @ 1320 Kalani Street - Honolulu, HI



## DRAFTPLANS HAWAII

- Over 10,000 floor plans & blueprints available for purchase online. Gather ideas for your own design.
- Drafting Service available for new home designs, additions, renovations, decks, fence, rock walls, etc.
- Free property specifications & title search info.



[www.draftplans.com](http://www.draftplans.com)

Call for free estimates:  
**265-0035**



We've Moved  
66-037 Kam. Hwy., Ste. 3  
Haleiwa, next to Growing Keiki

## Saccoccio & Lopez

ATTORNEYS AT LAW

Serving Haleiwa since 1984

- Bankruptcy
- Personal Injury • Criminal Law
- Landlord/Tenant
- Traffic Offenses • DUI

### Family Law

- Adoption • Custody • Divorce
- Paternity • Guardianship
- Deeds, and Wills

Notary Public

**637-7611**

VISA/MC Accepted



Paul & Nita



*Christmas Cantata:  
"A Light Still Shines"*

*by Randy Vader, Jay Rause and Camp Kirkland*

*Rehearsal Will Begin: October 27<sup>th</sup>, 1:30pm  
at Lili'uokalani Protestant Church*

*Concert Days: (tentatively set for)  
December 20 - 21, Friday and Saturday*

*All are invited to sing Praises to our Lord!  
Come and share your talents with us!*



**WAIMEA VALLEY**

— WHERE HAWAII COMES ALIVE —

**BOTANICAL GARDENS**  
Explore Hawaii's finest collection of rare and native plants, flowers, and wildlife

**CULTURAL ACTIVITIES**  
Discover authentic archaeological sites; learn Hawaiian crafts, games, and more

**WATERFALL**  
Visit the heart of the Valley and swim at Waihi Falls

On the North Shore across from Waimea Bay • Open 9 AM - 5 PM Daily  
Call: (808) 638-7766 • [WAIMEAVALLEY.NET](http://WAIMEAVALLEY.NET)

**You're Invited...**

October 26, 2013  
**Open House**  
10 am to 12 pm  
Grades JK - 12

**Fall Family Festival**  
1 pm to 6 pm



- International Baccalaureate (IB) World School
  - 
  - College preparatory curriculum
  - 
  - Small classes, caring teachers, and personal attention
  - 
  - ILH athletics and performing arts
  - 
  - Safe, supportive learning environment
  - 
  - Before & After school care, Summer Session
  - 
  - Lower tuition rates • Sibling & Military discounts
- Preparing Students to Go Forward with Confidence*



**Island Pacific Academy** • 909 Haumea Street • Kapolei  
**IPAHawaii.org** • (808) 674-3563





**Government Shut down**

Republicans and Democrats are fighting again on a spending plan for the fiscal year that started on October 1, 2013. They don't agree so we're having a government shutdown. I'm sharing from CNN's quick Q&A for a quick background:

**Q: Why did the government shut down?**

A: Congress has one key duty in the Constitution -- pass spending bills that fund the government. If it doesn't, most functions of government -- from funding agencies to paying out small business loans and processing passport requests -- grinds to a halt. But some services, like Social Security, air traffic control and active military pay, will continue to be funded. Oh, and Congress still gets paid, too.

**Q: How many government workers could be furloughed?**

A: Most of the 3.3 million government workers are deemed "essential" -- they'll keep working. But more than 800,000 government employees will sit at home, according to a CNN analysis.

Many of the furloughed federal workers are supposed to be out of their offices within four hours of the start of business Tuesday.

**Q: Isn't there another matter -- the debt ceiling?**

A: Ah yes, that's the next battle brewing. Remember that time when you maxed out your credit card? That's what the debt limit is all about. The U.S. is on the verge of maxing out its \$16.699 trillion credit card. And the president must ask Congress to raise the country's credit limit.

But the debt ceiling debacle won't come to a head until October 17. Perhaps it's best to deal with one showdown at a time.

That's what's happening on the federal level.

Warren Buffett, America's respected finance guru offered this solution about the debt ceiling: "I could end the deficit in 5 minutes . . . You just pass a law that says that anytime there is a deficit of more than 3% of GDP, all sitting members of Congress are ineligible for re-election. The 26th amendment (granting the right to vote for 18 year-olds) took only 3 months & 8 days to be ratified! Why? Simple! The people demanded it"

Whatever level of government it is, I wonder how long it will take for the American public to get really mad before we have a revolution to demand accountability from the bureaucrats and its political cronies. For every federal dollar that is used, 40% is borrowed money.

At the county level, there are about 10,000 municipal workers with an estimated budget of 2 billion dollars.

At the state level, there are about 100,000 state workers with an estimated budget of 24 billion dollars.

At the federal level, there are about 3.3 million 'civilians' / 8.4 'employees' per 1000 population (estimated 310 Million population) with an estimated budget of 3.8 Trillion dollars.

Please correct me if the above numbers are inaccurate. I sense you have come to the same conclusion as me. The government does not appear to have a firm grasp of its own operations. Chances are high that nobody has a firm grasp of every dollar that is being spent either.

If a group of independent and sharp CPAs and financiers has free access to the books of ALL the expenses, I wonder how much pork and waste could be cut out. It may take a lifetime or two to figure out this big mess.

*Choon James has been a real estate broker for over 20 years. She hosts "Country Talk Story" on Olelo Television every Saturday at 5:00 pm on Channel 55. Choon can be reached at 808 293 9111 or ChoonJamesHawaii@gmail.com*

**SAVE THE DATE!**

The North Shore Chamber of Commerce will hold its annual Christmas Party, Awards and Auction at Waimea Valley this year on Wednesday, December 4th.

This wonderful holiday event celebrates the people who have made lasting contributions to our North Shore community through the North Shore Kama'aina of the Year award. This year the award will go to Joe Lazar for his service to our community in being a key leader in Hale'iwa Main Street and the North Shore Chamber for many years leading the organization through a difficult transition when it lost its state funding. He was Hale'iwa Main Street/the Chamber's President for seven years. He also supports many charities.

- What: North Shore Chamber of Commerce's annual Christmas Party and Auction.
- When/Program: Wed., Dec. 4, 2013 at 6:00 p.m.: no-host cocktails, awesome auction, and tribute to the North Shore Kama'aina of the Year
- Where: Waimea Valley, Pikake Pavilion
- Prices: Individual tickets: \$65 each for members and one guest; \$75 each per non-member.

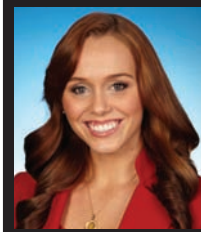
For more information, call the North Shore Chamber of Commerce at 637-4558 or go to [www.GoNorthShore.org](http://www.GoNorthShore.org).



**Polynesian Treasures**

*Hawaii's largest selection of Polynesian handicrafts and Hawaiian inspired gifts.*

North Shore Marketplace \* Haleiwa, Hawaii  
Open daily from 10 am \* (808) 637-1288



**Representative  
Lauren  
Matsumoto  
Serving You in District 45**

### A Tribute to George Ramos

The love our community has for George Ramos was shown by the many fundraisers and paddleboard races which contributed their proceeds to George. Last May, George's good friend and fellow paddler, Dennis Pang, organized Paddle for George, which drew over 300 paddlers to raise money to help cover George's medical costs. He was amazed to learn just how much the paddling community loved and appreciated him. Even toward the end, George came to the races this summer to watch, support, and encourage the race participants. He fought hard and battled his illness for two years. George was very kind and giving person, the kind of person you would aspire to be. Whether it was fighting to win a race, or fighting for his life, he battled with gusto to the very end. Our community will always love George.

George was born in 1952 and raised on the North Shore, graduated from Kahuku High School, and was married to Kayoko Ramos. He was an avid surfer and loved to surf Sunset Point and all of the North Shore. His first job, while still in high school, was picking Dole pineapples. He went on to become a skilled carpenter. He enjoyed wind surfing, dirt bike riding, and discovered paddleboarding in the late 1980's.

Paddleboarding soon became George's sport. Although he ran trails in the mountains and enjoyed BMX riding, it was actually to enhance his paddleboarding abilities. His main focus was on preparing himself for the Molokai Channel Paddleboard Race. He would paddleboard even when the waves were huge just to keep in shape. George was one of only 2 people who paddled the Molokai race solo every single year for 15 years until he was diagnosed with cancer 2 years ago.

My father told me a story about the first time he met George. He had just started paddling and was training about two days a week. One day when going out for a paddle with friends, George pulled up next to them at Sunset Beach and said, "What, you guys are paddling every day?" A fierce competitor, George was already sizing up the competition, but he always did it with a smile. George didn't just talk the talk, he really did train almost every day. My father and George soon became good friends. He was a constant source of inspiration not just to my father, but to everyone around him. Some days George would paddle 6 hours up and down the coast of the North Shore by himself to train for Molokai.



*George Ramos.*

He was that dedicated and committed to success. Uncle George was there to help me as well. He was always so kind to let me use one of his boards for the July 4th Paddleboard Races. He was always generous, genuine, and there to lend a helping hand.

George passed away just a few weeks ago. My heartfelt sympathy goes to Kayoko and family. A paddle-out memorial service was held for George on October 12th at Sunset Beach, on his beloved North Shore. It was a fitting tribute to celebrate the life of George Ramos. He made a positive difference in the lives of many people. He will be missed and always loved by his North Shore community.



*George Ramos.*



# Olakino Maika'i

(Good Health)

by Naty Camit Hopewell

## October: Breast Cancer Month

There are two main types: ductal carcinoma which starts in the tubes that transport milk from the breast to the nipple (most breast cancer is this type) and lobular carcinoma which begins in the lobules which produce milk.

Over a lifetime, one in 8 women are diagnosed with breast cancer. It is estimated that in 2013, 232,340 women and 2,240 men will be diagnosed with invasive breast cancer. Invasive means the cancer has spread from where it started. The forecast number of deaths in 2013 from invasive breast cancer are 39,620 women and 410 men.

What are the risk factors for developing breast cancer? Age—your risk increases with age. Family History—having a first degree relative (such as your mother or sister) with breast cancer markedly increases your risk. Some women refuse to get mammograms because they have no family history. Unfortunately, the majority of women diagnosed with breast cancer do not have a family history of breast cancer. Genes—some women have a gene defect that increases their risk by 80% (such as Angelina Jolie). Menstrual Cycle—women who get their periods early (before age 12) or go through menopause late (after age 55) have increased risk. Childbirth—women who have never had children or who have them at age 30 or older. DES--women who had taken this hormone in the 1940s through 1960s to prevent miscarriage. Hormone replacement therapy—taking hormones for menopausal symptoms for several years. Alcohol—drinking more than 1-2 glasses of alcohol per day. Some studies suggest that breast feeding may decrease the risk of developing breast cancer.

How can you help yourself? Get regular mammograms. The debate continues as to when screening mammograms should begin. Some say age 50, the Cancer Society still recommends beginning at age 40. You and your provider should decide what is best for you.

**SALON LA SIRENA**

**Grand Opening Special**  
**Full Highlight & Haircut \$100**  
 First time clients  
 A new eco friendly,  
 Green Salon on the North Shore

Owner Gina Walker  
 Haircut, Highlight and Color Specialist  
 Hairdresser to the Stars from  
 Malibu, CA. 20 yrs. experience.

Call for a free consultation  
 Shop 637-6869  
 Cell 375-3984

ROBERT M.  
**PAGAN CONSTRUCTION COMPANY**



**(808) - 499 - 8617**  
 New construction / Additions / Remodels - Lic # 32866 Bonded / Insured  
[www.robertpaganbuilders.com](http://www.robertpaganbuilders.com)

## Zumbathon in Support of a Cure for Breast Cancer

Breast Cancer attacks many women in America. It is not prejudice to age, race, color, or if you are wealthy or poor. Zumba instructor Coco Aricayos Sabarre says, "This year it really hit close to home when my eldest sister Diane was diagnose with breast cancer." In support of finding a cure for breast cancer , Coco will be having a, "Party in Pink Zumbathon" on friday October 25, 2013 at Hale'iwa Gym from 6 p.m. to 8 p.m. It will be 2 hours of FUN dancing it off!! The cost is \$10.00 shoes required. Tickets will be sold at door or you may call Brenna at 808-630-7665. Please come and help her in supporting the Cure for Breast Cancer.

**BREAKFAST**  
**7 AM to 11 AM DAILY**



Haleiwa Town Center - 637-5095

**PLUS \$2.00 Off with this Coupon**  
 Some Restrictions Apply. See Restaurant for Details.  
 When Ordering Regular Priced Items. Good Anytime. One Coupon Per Person.  
 Can Not Be Combined with Other Discounts. Expires 11/30/2013.

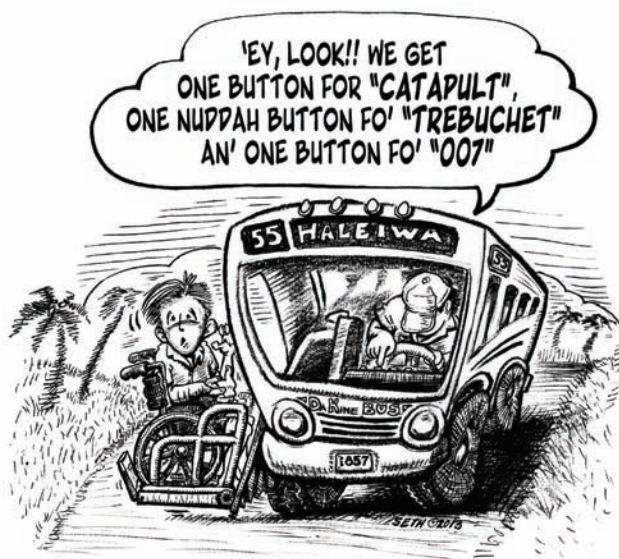


Letters to the Editor

Letter to the editor:

As a wheelchair user, I will be sad when TheBus retires its fleet of 700 and 800 series buses, in favor of the new 100 and 200 series buses. The 700s and 800s have a wheelchair lift rather than a ramp: a lift is easier to enter and exit, particularly at the North Shore's many bus stops without raised sidewalks. Also, the 700s and 800s have easy tie-down straps that a wheelchair user can do unassisted. In a 700/800, a wheelchair takes up three seats; in a 100/200, four. The 700s and 800s also have more elderly & handicapped seating.

Seth Bareiss  
Sunset Beach / V-land



Dear Editor: Sent via email

Dear Mr. and Mrs. Frye:

Thank you for your email on August 17, 2013, regarding traffic congestion at Laniakea Beach.

Your suggestion to use the gully under the bridge located at the Haleiwa side of the parking area will be taken into consideration. The City and County of Honolulu is currently working with the State Department of Transportation to find a viable solution to this congested area.

I appreciate you taking the time to share your thoughts and concerns with me. Should you have any questions, please contact Toni Robinson, Director of the Department of Parks and Recreation, at 768-3001.

Sincerely,  
Kirk Caldwell  
Mayor

Dear Editor:

Here's an idea that not only doesn't cost anything but will save us all gas, money, time and even lives: Stop Stopping.

Drivers have the right of way on Kamehameha Highway. All drivers are responsible to contribute to the steady FLOW of traffic, not stop and back every-one up for miles. I counted over 3 miles on a recent weekday.

People are trying to get to work—often their second job, get their children to school, lessons and doctors, their pets to the vet, their errands done before dark and family dinners on time. The Laniakea traffic jam costs most of us at least a few lost hours a week, negatively impacting our lives—and to what end?

It is not being "nice" to stop for vacationing tourists that slowly amble across the highway. Next time you want to stop, think of all the residents behind you, not the person with all the time in the world. Herein lies the chance to take the ALOHA SPIRIT to the next level: keep driving and help the 40+ cars behind you! If everyone would participate in a steady traffic flow and allow the tourists to wait until traffic clears, all would be back to normal in the blink of an eye. Our surfers used this courtesy which is why we never had the problem before.

Do we really want the Government to move in and torture us further? You think it's bad now, remember the Waimea road closure? Remember H3 was cleared for construction in 1960? Good news is, we have the power. Somebody print some t-shirts and bumper stickers! Tell everyone you know: "Just Stop Stopping".

Laureli Lunn  
Haleiwa

## Queen's Open Market

Sundays 1:00pm - 5:00pm

Liliuokalani Church Grounds



## CRAFT FAIR



Saturday, October 19, 2013

9:00 a.m. to 2:00 p.m.

Come and join us at our annual craft fair!!! Some of the items for sale are:

- Jewelry, pottery, accessories, doggie treats and other great gift items
- Baked goods, snacks, sushi, shaved ice and bento lunch

**Haleiwa Jodo Mission**

66-279A Haleiwa Road  
(next to Ali'i Beach Park)

Vendor spaces still available!  
Please call 637-4382 or write to  
haleiwajodominionyba@gmail.com  
for more information.



# MENEHUNE MADNESS!

## 1986 Menehune Flashback!



### 10th Annual Menehune Surfing Contest

Front Row: Jimmy Cravens, Orion Taylor, Shawn Briley, Jason Magallenes, Kanoa Dahlin, Ross Williams  
 Back Row: Contest Director Skill Johnson, Jack Johnson, Gavin Sutherland, Kevin Wilson, n/a, Leif Robinson, n/a, Aka Lyman, Pancho Sullivan

### Haleiwa Ali'i Beach October 14 & 15 1995

#### Official Results

##### 6 Years & Under

1. Bryan Williams
2. Alex Moody
3. Harley Thompson
4. Travis Beckmann
5. Mason Ho
6. Ehukai Woolley

##### 9-10 Boys Division

1. Tom Dosland
2. Kekoa Bacalso
3. Raymond Reichle
4. Nathan Carroll
5. Rio Laigo
6. Mikey Mitchell

##### 11-12 Girls Division

1. Melanie Bartels
2. Carmen Poor
3. Hannah Michaelson
4. Alana DuPont
5. Laura Labrador
6. Lindsey Reichle

##### 7-8 Boys Division

1. Hank Gaskell
2. T.J. Barron
3. Phillip Jordan
4. Reis Harney
5. Aaron Eveland
6. Philip Oury

##### 9-10 Girls Division

1. Lehua Patacchia
2. Jennifer Turner
3. Maikalanimai Martinez
4. McCall Willis
5. Kimberly Chang
6. Gloria Raskovsky

##### Boys Tanker Division

1. Kekoa Uemura
2. John-Paul Kaleopa'a
3. Ho'omalua AhChoy
4. Mickey Woolley
5. Stewart Ferriman
6. Kainalu Froiseth

##### 7-8 Girls Division

1. Alee Thompson
2. Jesse Labrador
3. Stephanie Emery
4. Taira Barron
5. Anastasia Ashley
6. Ashley Richards

##### 11-12 Boys Division

1. Joel Centeio
2. Sean Moody
3. Leon Rossetto
4. Jamie O'Brien
5. Brandon Hazen
6. Daniel Jones

##### Girls Tanker Division

1. Tiffany Rezents
2. Moana Lane
3. Tiare Taylor
4. Leilani Zukevich
5. Heather Rezents
6. Kailey Kravitz



In the beginning...

# How It All Got Started 36 Years Ago

by Skill Johnson

Originally, the concept for a special surfing contest in Hawaii for kids was the idea of a group of ladies including Hawaii's Queen of Makaha Rell Sunn. According to longtime contest director Skill Johnson, the "Menehune" was created in 1977 the same year that the Hale'iwa Surf Center opened its doors for the first time to serve the youth and families of the North Shore. Located at Hale'iwa Ali'i Beach Park, the "Surf Center" as it is known was planned, built and funded as a Honolulu City & County project. Set on one of Oahu's most beautiful surfing beach parks, kids of all ages are naturally drawn to the area for sports and recreation. Families come to enjoy the serene beauty for picnics or a simple weekend outing.

In 1976, the Hawaiian Women's Surfing Hui considered the sight, the crowd, and the opportunity to organize the first official keiki surfing competition that would immediately be on demand to become an annual event, and it did. During the first four years some of the professional women surfers in charge of orchestrating the primary years were Rell Sunn, Sally, Prang, Jeannie Chesser, Lindy McCrerey, Claudia Kravitz, Dale Dahlin and Patty Pamiccia. Rell Sunn played a major role in organizing and promoting surfing competition for children in Hawaii.

In the early years, an average of 25 to 35 kids signed up to compete in the event. Now, it's not uncommon for 300 or more contestants to put their skills to the test.

Contest director Skill Johnson has said that besides the enthusiasm from the keiki and their par-

ents, another important ingredient contributing to the success of the Menehune Surf Contest for the past several years have been the local businesses who have sponsored the event with donations of prizes, products and more.

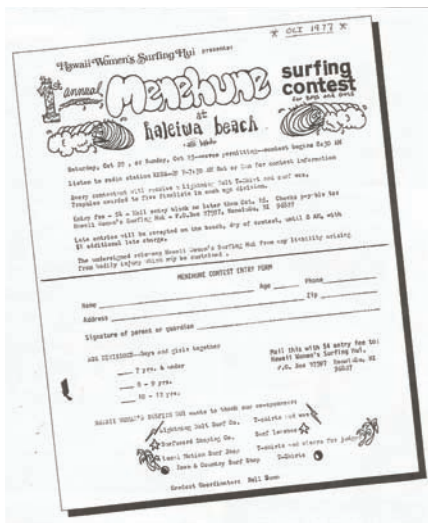
Another step in progress has been taken in the premiere publication of the new official contest program guide "Menehune Magic". The idea of an official printed program guide belongs to the late North Shore News Editor and Publisher Ron Valenciana. He has preserved and captured the history of each event in print so that in time families could look back at the older editions and see where the upcoming pros got their start. The "Menehune Magic" program guide will forever record the history of each annual event and once again the business community on the North Shore and Oahu businesses are responsible for much of the magic needed for the Menehune Surfing Contest.

Another great contributor to the promotion and preservation of the Menehune Surf Contest is North Shore artist Chip Lane. Since 1990, Chip has lent his artistic talent to the making of an annual Menehune Surf poster design that has also been marketed on T-shirts circulated world wide. In the premiere edition of Menehune Magic, all of those designs dating back to 1990 can be found with a list of champions for that year, created and designed by Chip Lane.

A final note, whatever the annual Menehune Surfing Contest has become in recognition and popularity, it is our hope to that the event will forever continue to stress: participation, fellowship, sportsmanship and fun!



1995 menehune surfing championships program guide



1996 menehune surfing championships program guide



# Past Menehune Surfers

*photos Bill Romerhaus*



Mason Ho



Brock Little



Shawn Briley



Liam McNamara



Kolohe Blomfield



## Former Menehune Champ



*Pictured here a successful hot Menehune competitor, then 12 year old Jamie O'Brien from Ehukai Beach. The Menehune Surfing Contest was the first contest Jaime ever surfed back in 1988. Photo by Martha Jenkins*

Save the Sea Turtles Int'l and Adopt a Beach and Highway Hawaii

## BEACH CLEAN UP

**Last Saturday of every month**

10 a.m. • 61-529 Kamehameha Hwy., Haleiwa, HI 96712

For more information 808-637-2211

Check out our website at: <http://adoptabeachhawaii.com>

"Good Luck to all the Menehune's.  
Have fun and Hang Ten!"



P.O. Box 256  
Haleiwa, Hawaii 96712

Good Luck  
Keiki Surfer's

**WRV**  
WAVE RIDING VEHICLES



# Sunny Garcia former Menehune Champ



**PROUD SPONSOR OF  
THE NORTH SHORE MENEHUNE SURF CONTEST.  
CONGRATULATING PAST & FUTURE CHAMPIONS!**

<p>2012</p> <p>VICTORIA BAUGHN GABBI KNUDSON JACK BUNCH JASMINE CRAWFORD KANIELA STEWART GINO COYLE ISIAIH BRILEY TRISTAN AIWOHI ZOE MCDUGALL MADDOX MACMURRAY</p>	<p>2011</p> <p>CLIVE MACMURRAY ISIAIH BRILEY WENDELL LEONG-TITCOMB MEGAN MCHALE SARA WAKITA REEF TSUTSUI DYLAN FRANZMANN HONOLUA BLOMFIELD KALA THURSTON CHASE ANDERSON TENAYA RICHARDSON</p>	<p>2010</p> <p>ANGELINA YOSSA AYLA SPRECHER HONOLUA BLOMFIELD KANIELA STEWART MICAHA LIONA CHLOE MEISTER DYLAN FRANZMANN NOAH BESCHEN ELIJAH FOX ROBERT YEW JULIAN WILLIAMS NOLAN MOORE</p>
<p>2009</p> <p>KALA THURSTON TENAYA RICHARDSON JOSH BUDROE MIYU SAITO HONOLUA BLOMFIELD ELI HANNEMAN ELIJAH GATES KEONE BLOMFIELD KYLE NAGY</p>	<p>2008</p> <p>HONOLUA BLOMFIELD KEONE BLOMFIELD NICOLE VERDADERO ELIJAH GATES MEGAN MCHALE WYATT MCHALE BARRON MAMIYA KONA OLIVEIRA MAHINA MAEDA REEF TSUTSUI MAKOA MURPHY</p>	<p>2007</p> <p>NOAH BESCHEN KIRRA SEALE KAHEA KAHALELIO YUKI SAITO KAINOA YESTER MAHINA MAEDA TATIANA WESTON-WEBB FINN MCGILL RYAN SHANLEY LUKE SHEPARDSON</p>
<p>2006</p> <p>TATIANA WESTON-WEBB LONDON MCNAMARA JOHN QUIZON DAYTON QUIZON KAULANA APO KAINOA YESTER BARRON MAMIYA NICOLE VERDADERO DAX MCGILL TATIANA WHITFORD</p>	<p>2005</p> <p>KAHUKA KANE BARRON MAMIYA NATHALIA HUNTER CASSIDY KUAKINI AIDEN NICHOLS KOA SMITH LANI DOHERTY KULIA DOHERTY ELI OLSON TEHANI PERKINS</p>	<p>2004</p> <p>ALESSA QUIZON EARL STEWART CHASE TANTOG JACLYN JOHNSON NICOLE VERDADERO KALANI DAVID BARRY TANTOG JACY SHIMAHARA MICAHA MONIZ JOSHUA MONIZ MATTHEW COSTA</p>
<p>2003</p> <p>KIANA KAIWI KAIAO GOINS MO FREITAS KOA SMITH ALESSA QUIZON KIRON JABOUR CHLOE SMITH PO'OKELA SANBORN TRACY PRUSE KONA JOHNSON MANUHOA KANE</p>	<p>2002</p> <p>KEKUMUNUI BLOMFIELD KAINUI GOINS KAHUKA KANE EARL STEWART ASHLEY MCKEOWIN KIANA KAIWI ASHLEY HUNTER TRACY PRUSE LAWRENCE KNOSP</p>	<p>2001</p> <p>ALEX SMITH EARL STEWART BETHANY HAMILTON ASHLEY HUNTER STERLING APONTE KALLIE HANDCOCK MANUHOA KANE MEGAN BRIDGMAN KALEO CAJIGAL LAWRENCE KNOSP</p>
<p>2000</p> <p>BRYAN WILLIAMS KALEI PATY MINER ALLBEE LAYER VALENTINA KNUDSON ISSAC JAFFURS MARISSA EVELAND STACIA MCKEAN EZEKIEL LAU CHASE JOHNSON ASHLEY HUNTER MICAHA MIGUEL KINO CAJIGAL</p>	<p>1999</p> <p>REIS HARNEY BEN KEALOHA O'NEILL THOMPSON TAIRA BARRON JESSICA LABRADOR VALENTINA KNUDSON ALANA MOCK TYLER THORNSLEY ALLBEE LAYER REGGIE ROBINSON</p>	<p>1998</p> <p>KAI BARGER JOHN-JOHN FLORENCE KAINALU FROISETH ALANA MOCK ZACK FONOIMOANA MARISSA EVELAND REIS HARNEY EHUKAI WOOLLEY MEGAN BRIDGMAN SARAH BRIDGMAN VALENTINA KNUDSEN WINA GERSTENBERGER</p>



**Video - Media  
Need Web Video  
Ask About Our  
Special Rates**

**808-781-2535**



**Party Favors for all Events**

birthday parties - babys 1st - graduations - any event  
also available

\*Full Candy Shop set up      \*Crack Seed Candy bar

**(808) 636-7885**

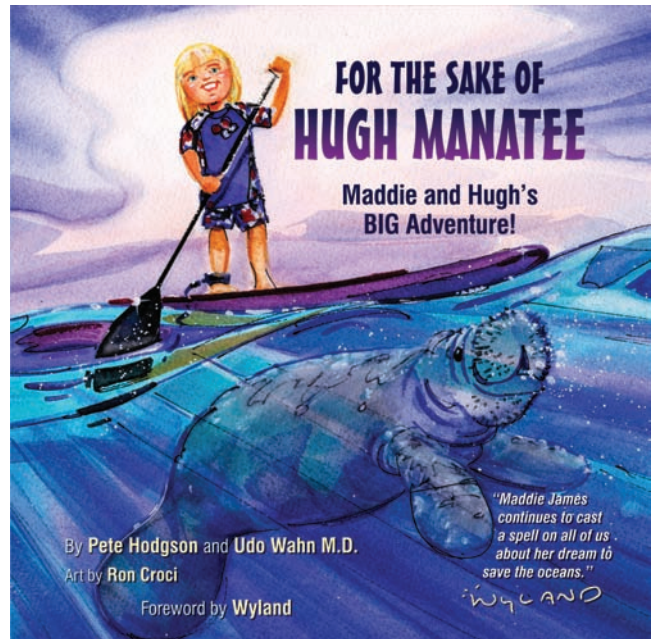
FIND US ON FACEBOOK!  
[WWW.FACEBOOK.COM/VICTORIAS.SWEETS.9](http://WWW.FACEBOOK.COM/VICTORIAS.SWEETS.9)

## For the Sake of Hugh Manatee

### Children's Picture Book Tells Heartwarming Tale of Ocean Preservation and Education

*For the Sake of Hugh Manatee* – Maddie and Hugh's BIG Adventure, by Pete Hodgson a North Shore resident and Dr. Udo Wahn, the author of the Cabo and Coral book series, and art by Ron Croci is available for purchase at <http://www.ForHughManatee.com>, Amazon.com and the gift shop at the Ocean Institute in Dana Point, CA. The inspiring story and beautifully illustrated book is geared for children between the ages of four and nine, and will compel children and families to take action for clean water.

*For the Sake of Hugh Manatee* tells the story of a little girl named Maddie and her friend Hugh, a manatee, as they discover the importance of keeping a healthy and clean water environment – valuable lessons that they learn at the Maddie James Seaside Learning Center. Together, they paddle upstream with their newfound knowledge and experience some of the problems affecting the watershed that are adversely impacting the ocean and its life forms.



*"Good luck keiki surfers and live aloha!"*

Haleiwa Farmers' Market and Waimea Valley will be celebrating a safe and fun Halloween. Thursday, October 31, from 3-7. Bring the keiki for 40 booths of trick or treating (each vendor will be handing out candy and such), a pumpkin decorating contest, a pumpkin carving contest for adults and keiki, a keiki costume contest in which everyone gets a prize. All vendors will be in costume serving up ghoulishly ono food, a full bar and live music. A cast of spirits will fill the valley with fun and surprises for everyone. Call 808-388-9696 for more details.

## Hallelujah Night

Hosted by New Hope  
Central-Haleiwa

Thursday, October 31st

6:00 p.m.-8:00 p.m.

at

First Baptist Church and Preschool

66-415 Haleiwa Road

Phoned: 637-4847

**FREE**

Appropriate for children 1-10 years old

Public Invited

Fun, Games, Balloon-Bouncers,  
Keiki Ride, Treats, Food  
and Entertainment!



NORTHSHORE

**QUIKSILVER**   
**BOARDRIDERS CLUB**

*"Good Luck Menehune  
up and rising surf stars"*





## BANZAI NORTH SHORE WIRELESS

The NSSA, The National Scholastic Surfing Association, held its 2nd event of the Oahu season at Sunset Beach in great surf this month. The organization has been in existence for about 20 years in Hawaii. It is a nonprofit organization whose mission is to "encourage and assist its members in their interest to learn and develop the fundamentals and skills of surfing competition while competing in structured and quality events while supporting the merits of academic achievement." The national organization started in 1978 and there are more than 80 regional events nationwide. The annual National Championships in Huntington Beach is one of the highest profile youth surfing events in America. Needless to say our North Shore surfers own many of the National titles, taking 8 last season. That... is the way to represent! For all results check out [www.nssahawaii.com](http://www.nssahawaii.com).

One of the winners at Sunset was the North Shore's Honolua Blomfield. "Hono" as she is called also just killed it in Peru at the International Surfing Association Longboard World Championship winning a World Title in the Junior longboard division against the guys. This Wahine is a natural mermaid who competes in both longboarding and shortboarding and hopes to make our Hawaii teams in both and of course get on the pro tour some day. The ISA works at getting surfing into the Olympics and Honolua is looking in that direction. "I don't think surfing gets the respect it deserves and by being in the Olympics it would get more people to know surfing," she said. The ISA just announced its 76th member nation, Hong Kong. More info at [www.isasurf.org](http://www.isasurf.org).



Honolua Blomfield ISA World Jr. Longboard Champion.

Women's Surf Style Magazine is celebrating its ten year anniversary. The magazine started in January 2004 publishing 6 issues in a small format you may remember seeing around our North Shore surf shops and stores. For the past 5 years they have been doing a couple annually but have a large distribution and 180 pages of quality content. Now you can find them in Barnes & Noble, Books-A-Million, Hastings and select surf shops and available for purchase in 8 countries. Also find it online and free. Congratulations to Dan and Sandra Olsen for their hard work in bringing lots stoke to Women Surfers all over the world. "I just got tired of working a restaurant job," said Sandra Olsen. "I wanted to combine my graphics back-round with my love for surfing and Dan and I just finally put it together." About their long success Dan said, "We just put lots of normal surf girls in the magazine so that women and girls knew they could surf and live the lifestyle and lots of fashion, it worked." Look for their spring 2014 magazine release party and WSSM Retreat Tour kick-off party in late March 2014.

The goblins are coming out! Look for the annual Halloween full moon paddle that Surf n Sea does every year. It is October 19th from 7-10 p.m. It is so fun and kind of freaky for sure as you paddle up the Anahulu River under the moon and stars. There is a costume contest also so get your costume ready!

Have you ever heard of the Suteb? Do you have joint pain in your elbow like so many athletes do. The Suteb is a super tennis elbow brace invented by a local doctor, Dr. Dao. Leeland Dao has an office in Hale'iwa and is doing great things for our community. He is a Board Certified Family Physician and he is know as the "Surfing Doctor." He has been on the beach at surfing events with his crew to assist with injuries and healing for the elite surfing athletes since 1997. You can check out his brace at <http://www.supertenniselbowbrace.com>. Dr. Dao is of course a surfer himself. He has a new therapy division in his office right in Hale'iwa. Stop and check our the facility at 66-150 Kamehameha Highway right next to Ace Hardware. Call them up (808) 637-8416.

Triple Crown is right around the corner. Starting out the season is the qualifying event, The Hawaiian Island Creations Pro at Sunset Beach. This is a four star event with a \$95,000 purse. The waiting period is from October 29th to November 10th. This is a great opportunity for local Hawaiian surfers to make a name for themselves and qualify for the Vans Triple Crown.

*Continued on page 18*

Banzaï North Shore Wireless continued from page 17

The first Vans Triple Crown event starts the 12th of November with the Reef Hawaiian Pro a \$250,000 ASP "Prime" event. More to come as the season kicks into

gear. Everyone thanks our community of surfers for sharing their breaks! Aloha. Send me info, banzaib@hawaii.rr.com



NSSA, Explorer 14 and Under Finalists . Barron Mamiya, Loa Ng, Finn McGill, Logan Bediamol, Dylan Franzmann, Conor Kennedy.

# Nightmare at Dole Plantation

64-1550 kamehameha hwy, Wahiawa

**Three attractions, one location, endless screams**

13 haunted house

Nightmare express

Trail of terror



**Friday  
October 18 & 25**

**Saturday  
October 19 & 26**

**7:00PM - 11:00PM**

WWW.NIGHTMARESLIVE.COM OR WWW.DOLE-PLANTATION.COM





# North Shore News 2013 Schedule

PUBLICATION DATE	EDITION	DEADLINE DATE
October 30	#22	October 17
November 13	#23	October 31
<i>Triple Crown of Surfing Special Edition</i>		
November 27	#24	November 14
December 11	#25	November 29
<i>Christmas Special Edition</i>		

Direct-Mailed to Every Home  
 MOKULEIA • WAIALUA • HALE'IWA • KAHUKU • LAIE  
 Every Other Wednesday  
 12,000 copies

"The North Shore's most popular publication" since 1970  
 (808) 637-3138 • NShoreNews@aol.com

## WAIALUA FARMERS' COOPERATIVE MARKET

HISTORIC WAIALUA SUGAR MILL GROUNDS  
 Saturdays 8:30am - 1:00pm

- Buy Directly From Our Local Farmers
- TWIN BRIDGES FARM
  - KAHUKU FARMS
  - WAIALUA FRESH
  - DEL TROPICAL FLOWERS
  - T & L FLOWERS AND PALMS
  - WAIALUA COOPERATIVE FARMERS
  - FIELDS OF ALOHA
  - TASTE OUR WAIALUA FOOD PRODUCTS
  - FRANCIS BARBQ CHICKEN
  - NONI FRUIT LEATHER & LOTION
  - KALENA POLYNESIAN FOODS & CRAFTS
  - SOMETHING SPECIAL TARO CAKES & BISCUITS
  - NORTH SHORE GOODIES
- The original coconut peanut butter  
 AND MORE

A FARMERS' MARKET MANAGED BY  
 FARMERS  
 Edith 637-8589

# BULLETIN BOARD

NOW OPEN IN HALEIWA TOWN



## 10% OFF

### 60 Min Massage

\*\* Includes eck, Head, Shoulders, & Back\*\*

With this coupon

66-437 Kamehameha Hwy  
 Suite 101A  
 (next to Haleiwa Post Office)  
 (808) 366-1308

Call for an appointment

[www.oahuscreens.com](http://www.oahuscreens.com)



## HOLOHOLO SCREENS, LLC

New window installation  
 New screens/re-screens  
 Pet proof screens  
 Porch enclosures

Sliding/swinging doors  
 Screen door roller repair  
 Pet grills and doors  
 Solar screens

**FREE ESTIMATES • (808) 783-8764**



### Ernie Doak Plumbing, Inc.

*Quality without Compromise*

NEW CONSTRUCTION • RENOVATION • SOLAR  
 Serving Oahu's North Shore for over 20 years

**ERNIE DOAK**

Lic. #CT-22113

Lic. #PJ-10630

cell 295-7943

office 638-8620

[erniedoakplumbing@yahoo.com](mailto:erniedoakplumbing@yahoo.com)

## SALON LA SIRENA

An Eco Friendly Green Salon  
 Eco-Fin Organic Grand Opening Specials  
 Full Color, Cut & Style \$75  
 Mani/Pedi \$40

Michele Popek

723-1366 637-6869

Waialua Shopping Ctr. across from Jerry's Pizza

**"THE BULLETIN BOARD THAT IS IN EVERYONE'S HOME"**

# BULLETIN BOARD



Specializing in vegetarian foods, vegan foods, whole foods, organic food. Wheat free, dairy free, raw foods, gluten free. A complete selection of natural foods for 39 years. Make earth day, everyday. Open 7 days. Mon.-Sat. 9am-7pm. Sun. 9am-5pm  
66-445 Kam. Hwy  
Haleiwa, Hawaii 96712  
Next to the Post Office  
808-637-6729 • 808-637-1922 fax



**DR. PORTER TURNBULL**  
Chiropractic Orthopedist  
(808) 638-8740  
Appointments available Mon.-Sat.  
(evenings by appointment)

- Industrial accidents & auto injuries
- Sports injuries • Spinal care
- Safe, Effective, and Gentle

## N-C PLUMBING & SUPPLY

Cont. Lic. No. C-8913



- RESIDENTIAL & COMMERCIAL SALES & SERVICE
- CONTRACTING & DESIGN • HOME PLUMBING SERVICE
- PLUMBING FIXTURES, HEATERS • FREE ESTIMATES

Nestor P. Calilao (Owner)  
P.O. Box 769  
Waialua, HI 96791

Bus: 637-8662  
Res: 638-5157  
Cellular: 372-8718

email: nncplumbing@hawaii.rr.com



**Jay Oku**  
Loan Officer

(808) 393-0707  
Office: (949) 281-3076

jay.oku@academymortgage.com  
academymortgage.com/jayoku

1833 S. Coast Highway, Suite 210, Laguna Beach, CA 92651  
NMLS #218211 | State Lic: CA #CA-DOC218211, HI #HI218211  
Corp Lic: CA #4170013, HI #HI-3113 | Corp NMLS #3113 | Licensed by the Department of Business Oversight under the California Residential Mortgage Lending Act



## Restaurant & Margarita Bar

- DAILY SPECIALS -

Island Fresh Fish Tacos  
Premium Margaritas

Large Parties Welcome Open Daily 9:30am - 9:30pm  
637-3059 • North Shore Marketplace • Haleiwa  
www.CHOLOSMEXICAN.com



LIC. #AG 18275

GENERAL ENGINEERING CONTRACTOR

Full Service Sitework  
Contractor

Septic Systems & Tanks  
25 yr. exp.

Michael Cowper 638-7200  
cowperhawaii.com



Factory Showroom also available  
... Lost, South Point NSP & Accessories  
Located at the Sugar Mill  
638-0050 • 366-2282  
www.SCHAPER-HAWAII



License No. C28113

Commercial • Residential  
Septic • Solar • Design

Mike 630-1407  
Steve@offshoreplumbinginc.com

## Munden Design & Build

Lic.#BC19632

Design • Plans • Permits • Construction  
Additions & New Residences

808 391-8616

Providing quality work since 1978

## J.B. TILE & CARPET

JOHN BURTCH

Free estimates  
25 years experience  
(808) 226-1023





# SENIOR CAMP RETREAT

@ Camp Pineapple 808

October 31st to November 1st 2013

Activities/Services located at the Wellness Center  
64-1488 Kamehameha Hwy, Wahiawa, HI 96786

Contact Yvonne De Luna 622-3929 email anuenuehale@hawaii.rr.com

Adult Day Care Service, Mon - Fri, 8:00am - 5:00pm

Massage Class For Seniors, Mon, 10:00am -12:00pm

Medical Services by a Physician, Mon, Wed & Thurs

Tai Chi Class, Tues, 9:00am-10:30am

HI-Tech For Seniors, Tues & Fri, 10:30am - 11:15am

Line Dancing, Tues, 10:30am - 11:00am

Mah Jong, Tues, 11:00am - 12:00pm

Karaoke, Thurs, 9:30am - 11:00am

Yoga/Meditation, Thurs & Fri, 10:00am - 12:00pm

Bon Dance Class, Thurs, 1:00pm - 2:00pm

## Our next service at Hale'iwa Beach Park Sunday, October 27, 2013



**Lunch for everyone at 12 noon!**

*Trish Coder Photos*

### **SURFERS, SAINTS & SINNERS ARE WELCOME!**

OAMC is a community outreach made possible by many generous supporters and volunteers. If you would like to support or volunteer for the OAMC call 690-0377.

The OAMC is scheduled to meet on the last Sunday of every month (except May & December ).

*"There will always be poor people in the land. Therefore I command you to be open handed toward your brother and toward the poor and needy in your land." (Deuteronomy 15:11)*

A 501c3 non-profit community organization



The North Shore News is published every other Wednesday and mailed free of charge to all North Shore homes and businesses. Extra copies may be obtained at our office.

**PRESS RELEASE POLICY:** Submit press releases in person or by fax, mail or email to Editor, North Shore News, 66-437 Kam. Hwy., Suite 210, Haleiwa, HI 96712. Please type your releases and keep them shorter than 200 words unless they are of an unusual news interest. Releases should be viable news stories and are published on a **space available basis only**, with priority given to those received in our office first. You may attach photos. We are not responsible for the return of any photos. All materials are submitted at owner's risk. We reserve the right to edit and/or refuse all submissions including advertising.

**EDITORIAL POLICY:** We welcome articles and letters from our readers. Letters to the Editor are published on a space available basis only and preference is given to shortness of length, and quality of content. We prefer to run not more than one letter, per person, per 6 month period. Letters subject to edit.

Views expressed by our contributing writers and advertisers do not necessarily reflect the view of the management and staff of the North Shore News. All rights reserved. Reproduction in whole or part without permission is prohibited. © 2013.

#### Editor & Classifieds

Linda Seyler

#### Typography

Downtown General Store

#### Contributing Writers

Betty Depolito

Naty Hopewell

Choon James

City Councilman Ernie Martin

State Representative Lauren Matsumoto

State Representative Richard Lee Fale

Photography  
Banzai Productions  
Trish Coder



Please recycle this newspaper.

# CLASSIFIEDS

## SERVICES

### SHORE ELECTRICAL SERVICE

New Const-Remodels  
638-0049 / Lic#C20777

### Dog/Cat Nail Trimming

at your home only \$15.00  
Call Julie 637-5395

### Lawn Care For You

Mowing, Trimming, Light Hedging  
Call Thomas 637-5839

### PARADISE PLUMBING INC.

New Const • Repairs • Remodels  
808-368-1473 / Lic. 29856

### Handyman Services

Remodeling, Carpentry, Floors,  
Concrete, all parts of Construction  
Call Bob "The nicest guy in the  
business" Ph. 282-2812

### Greekz Plumbing LLC

Complete Service & Repair  
Camera inspection/drain cleaning  
"Got a leak? Call Steve the Greek"  
808-372-1820 Lic#32939

### Haugan Construction LLC

Build & Repair • Big & Small  
Let's Talk  
Steve 542-9269

### North Shore Pumping

Septic and Cesspool Service  
Clifford 638-0900 • 291-5099

### Computer Problems?

I can fix any MAC or PC.  
Chris 371-3089

### Need Help In English?

Certified English tutoring available for students in college and high school. References and work examples available upon request. If you have any questions or would like to arrange an appointment. Please call: Jefferson Speer @ 808-386-2679 or email at www.Jefferson.speer@gmail.com

### EXPERT ELECTRICIAN

Fans, Emergency Services, etc.  
Jim Richards 371-9369

### Waybow Window Washing

Let the sunshine in.  
Residential • Commercial  
• New Construction  
Free estimates. Call 223-4034

### NorthShoreSilverSmiths.com

Custom design silver jewelry  
Sunrise shell settings a specialty  
Call Zenna: 699-6596

### Construction Services

Kitchens, Baths, New & Remodel  
Free Estimates 721-0847

### Live In Caregiver

11 yrs. Exp CAN  
Linda 724-833-3467

### Paumalu Electric Inc.

C 18074

Residential & Commercial  
New Installation & Repairs  
Renovations. Remodels  
Electric Meter Replacements  
Complete Install for Solar PV  
Dave Hancock 638-9054

### BOW WOW BUNGALOWS

Licensed Boarding Kennel  
North Shore, Oahu  
Reasonable Rates  
Ph. 637-2562  
*These Dogs Have Fun!*

### HARVEY'S REPAIR, LLC

24 hrs Towing Service  
Specializing in opening  
locked car doors  
Call any time 478-0333

### LEARN TO SWIM

AT THE

## HAWAII SWIM SCHOOL

ON THE NORTH SHORE  
Developing swimmers since 1982  
Haleiwa Rd. at Smiley Place  
637-4863

## BIKRAM YOGA

5 a.m. Tues & Thurs!  
7 p.m. classes \$10  
thru October!

Call for class schedule

**637-5700**

## Your Clean Home

Vacation/Residential

Home Cleaning

Affordable • Reliable

• Green Cleaning

For Free Estimate

Call 638-0262 or 782-9941

## BOBBY'S BODIES

Tuesday evenings at 5:00 p.m.

• Body Toning

Friday mornings at 9:00 a.m.

• Cardio Pump/Fat Burner

For more info: call Bobby, owner of  
BOBBY'S BODIES at 637-4150

## Aloha Computer

PC Repair/Virus Removal  
Fax/Copy/Internet Access  
372-2667 or 237-4558

## SHIATSU • LOMI

Aromatherapy

Milica Barjaktarovic

Lic # MAT8348

351-0848

HumanRemodeling.com

## Golden Rule Lawn Care

Mowing, weed whacking,  
hedge trimming, rake up,  
light weeding & haul away.  
Call Matt 269-5020

## PIANO LESSONS

Guitar, Ukulele, Bass,

Songwriting

**637-4635**

## HOW TO CONTACT THE NORTH SHORE NEWS

Letters to the Editor, and other items submitted for publication consideration may be sent to us via:

MAIL: 66-437 Kamehameha Hwy., Suite 210, Hale'iwa, HI 96712

E-MAIL: NShoreNews@aol.com • FAX: (808) 637-8862

PHONE: (808) 637-3138

Office Hours: Monday-Friday 10 a.m.-3 p.m.

www.northshorenews.com



# CLASSIFIED ADS

**Next Issue - Oct. 30, 2013**  
**Deadline Date-Oct. 17, 2013**

**GERMAN CAR SERVICE**  
Professional-Qualified  
Technician  
Call Gary  
637-6800

**J&L Services Haleiwa**  
Quality Landscape and  
Garden Maintenance. Also  
Pressure Washing, Hedges  
and Plant Installation.  
Call 673-1384 for est.

**ANGELS  
PLUMBING**  
Repairs  
Remodeling  
Renovation  
**638-7878**  
Lic. #C12004

**THE LAWN RANGER**  
Lawn Maintenance  
no yard too hard  
no lawn too far gone  
We mow betta  
258-6439 Dan Fatchett

  
**Business Services Center**  
Fast & convenient fax, copy,  
scan, computer/internet,  
laminates, etc.  
Across from Haleiwa post office.  
637-4558 or GoNorthShore.org

  
**Marianne Abrigo, Properties**  
Specializing in -  
North Shore  
Real Estate  
Ask for our list of avail-  
able properties and/or a  
free market analysis.  
**Marianne M. Abrigo**  
"Realtor since 1974"  
Office **637-3511**  
Fax **637-0777**  
Email **mabrigo222@aol.com**

**NORTH SHORE AUTO DETAILING**  
Package #1 • \$50.00  
Wash, wax, vacuum interior,  
dress interior, dress tires  
Package #2 • \$70.00  
Wash, wax, water spot removal,  
vacuum interior, dress tires  
Vans, SUVs, Custom 4 Wheelers,  
Glass water spot removal, extra (all packages)  
Price may change on the condition of vehicles  
interior and exterior  
We are mobile we come to you  
Call Billy 371-0854 or DJ 492-5887

**Individual & Family Therapy**  
• Grief & Loss • Habits & Addiction  
• Life Challenges & Transitions  
• Clinical Supervision  
Curielle Duffy, MA, MSW, LCSW, CSAC  
808.633.3437 www.liferecovery.pro

**N.S. Property Maintenance**  
Complete building & grounds  
maintenance, painting int/ext,  
demolding & power washing  
specialist, carpentry,  
fences & decks  
Chris 381-5213 / 638-0659

**Minor Skin Irregularities?  
Stubborn Acne?**  
Adult & Teens • Skin Irregularities  
Call **748-1448**  
Skin Classic &  
Face Reality Specialist  
Free Consultation

**HELP WANTED**  
**BUSSERS/SERVERS**  
Pizza Bob's in Haleiwa is looking  
for BUSSERS/SERVERS. Experi-  
ence preferred. Apply in person  
at 66-145 Kam. Hwy.  
**COOKS/KITCHEN HELP**  
Pizza Bob's in Haleiwa is looking  
for kitchen personnel. Experi-  
ence preferred, but will consider  
training the right people. Apply  
in person at 66-145 Kam. Hwy.

**Retail Sales Associate**  
**Polynesian Treasures  
North Shore Marketplace**  
Now hiring for PT/FT sales position.  
Previous retail and management or  
leadership experience a big plus!  
Competitive wages plus  
commission and bonus.  
Fax resume to 637-8535  
or email to  
polynesian treasures@hawaii.rr.com

**Retail Sales  
Surf & Sea**  
Hawaii's Ocean Sports Headquarters  
is always looking for hard working,  
energetic people to become a part  
of our sales team. Good pay, bonus,  
benefits. Ocean sports experience  
and/or bilingual a plus. Apply in  
person daily 9am-7pm  
62-595 Kam. Hwy., Haleiwa

**MISCELLANEOUS**  
Waialua High Parent Booster Club  
c/o 2016 Car Wash Fundraiser  
Please come and support the  
students Of 2016  
Saturday, November 2, 2013  
8:00a.-2:00pm  
Haleiwa Gym  
Website: WAIALUAHIS2016.com  
Email:  
WAIALUAPROJECTGRAD2016@  
GMAIL.COM

New Hope Haleiwa  
"Anchored to God's word,  
led by his spirit" @Haleiwa  
Elementary School  
9:00am Service  
621-9363

**OFF da ISLAND**  
Are you leaving Oahu on vacation or  
business? Do you live on a neighbor  
island, the mainland or foreign coun-  
try and subscribe to the North Shore  
News? Try send us a photo of someone  
in front of a sign or landmark holding  
a copy of the NSN. Email your photo  
along with the person or persons'  
name, community of residence, tele-  
phone number and photo location to:  
NSHoreNews@aol.com. Or, mail to  
OFF da ISLAND Photo, North Shore  
News, 66-437 Kam. Hwy., Suite 210,  
Haleiwa, HI 96712. We cannot return  
photos so please send us a copy. Photos  
received become the property of NSN.  
Preference and priority will be given to  
emailed photos.

**Please Report Stranded  
Sea Turtles**  
Call 983-5730 • Mon.-Fri., 7am-4pm  
288-5685 pager wksends, holidays  
587-0077 and after hours  
Suspected Law Violations  
541-2727 or 800-853-1964  
NOAA Fisheries DLNR-DOCARE

**Clean Stream  
Hotline  
768-7890**

**Jerry's Pizza**  
**637-8866**  
**Fresh Pizza  
Delivery in Haleiwa**

**Classified Ad Rates**  
3 lines (min.) \$18.89  
4 lines \$25.13  
5 lines \$32.45  
1" Box Ad \$41.88  
(29 characters in each line)  
Include your contact information.  
\*Ads can be dropped off in mail slot,  
mailed, or emailed. Pay by check pay-  
able to: North Shore News or credit  
card by phone order.  
We reserve the right to refuse any  
advertisement with a full refund.  
North Shore News • 66-437 Kam. Hwy.,  
Suite 210, Haleiwa, HI 96712  
• (808) 637-3138 • NSHoreNews@aol.com

**Statewide Hotline  
for Litter**  
**1-888-592-2522**  
Callers need to provide:  
1. License plate number  
2. Make and model of  
vehicle  
3. Date and time and  
location  
4. What was thrown/  
blown

**Voice of God  
Ministries**  
Jesus Loves You  
If you need Prayer  
Call 808-373-0294

**For Advertising Rates  
Call 637-3138 or go to  
www.northshorenews.com**

**PRODUCE**  
Now buying assorted fruits and  
coconuts. Call 255-8474

**Halloween Art Projects**  
October 26, 2013 at the  
Waialua Community  
Recreation Center  
1:00p - 2:00p  
Registration at the WCA  
required.  
**Haleiwa Art Walk**  
Last Saturday of the Month



**Malama Market Haleiwa:**  
Open Daily 7 a.m.–9 p.m.  
(808) 637-4520

**Malama Market Makakilo:**  
Open Daily 6 a.m.–10 p.m.  
(808) 672-9955

Valid Dates:  
**10/16/13–10/22/13**

## Deals of the Week!

**Prima Gattie Yellow Peach**

**\$1.49**  
LB.



**Fresh Ground Beef**

80% Lean, Jumbo Pack,  
5 lbs. or More

**\$3.49**  
LB.



Cook Internally to  
**160°F**

**LARGE SIZE**

**Farm Pack Eggs**

Mainland, Grade A, Shell  
Protected, Large, Dozen

**\$2.79**



**Vitaminwater**  
Selected Varieties,  
20 oz.  
**or Powerade**  
Selected  
Varieties,  
32 oz.

**4/\$5**



**Spam Luncheon Meat**  
Selected Varieties,  
12 oz.

**2/\$5**



**Cheetos, Fritos,  
or Funyuns Chips**  
Selected Varieties,  
6.5–10.25 oz.

**2/\$5**



**Dreyer's Ice Cream**  
Selected Varieties,  
48 oz.

**2/\$7.50**



**Chobani Yogurt**  
Selected Varieties,  
6 oz.

**\$1.39**



**Strudel Bites**  
Selected Varieties,  
18 ct.

**\$5.99**  
EA.



**16 Piece Country Style Fried Chicken**

**\$12.99**  
EA.

4 Breasts, 4 Wings,  
4 Thighs, 4 Drumsticks

16 PCS.



**Bud, Bud Light, Miller, or Coors**  
Selected Varieties,  
30 Pk. Cans

**\$21.99**

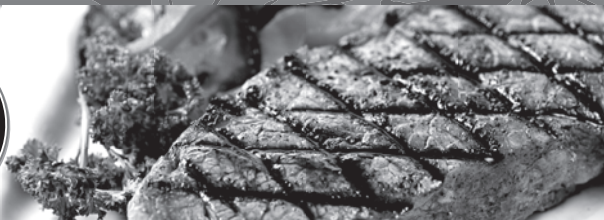


### Thursday

## Grilled Steak Lunch

7–8 oz. Steak, Rice, Tossed Salad, Drink

**\$7.99**



**Hawaii Beverage Fee** Hawaii Beverage Fee of 1.5¢ per can or bottle will be added to purchase price at checkout. An additional Hawaii Deposit Fee of 5¢ will be charged for all specially marked beverage containers.

Limit five units (mix/match) per purchase, unless otherwise specified. We reserve the right to limit quantities. No sales to dealers. Prices plus applicable state tax. Hawaii EBT cards welcomed.