



"E Ala Na Moku Kai Liloloa"

**Mission Accomplished
for Kahuku ROTC cadets**

The Kahuku High School ROTC cadets accomplish a recent mission targeting special education students. Mission accomplished with extreme success.

See story on page 8



NORTH SHORE NEWS January 26, 2011 VOLUME 28, NUMBER 2



**Miss Hawaii is
2nd runner up
Miss America
in Las Vegas**

Haleiwa's Jalee Fuselier, Miss Hawaii 2010, almost won the big jackpot in Las Vegas while competing with 53 other beauties for the 2011 Miss America Pageant. She came oh so close. Standing along with two other finalists, she made it down to the final cut. As the three finalists were standing together it was announced that the 2nd runner-up was... "Miss Hawaii." And with that dozens of Miss Hawaii supporters in attendance let out a synchronized "ahhh." The next announcement was that of the new Miss America, 17 year-old Teresa Scanlan, Miss Nebraska.

See follow-up story on page 7.

PRE-SORTED
STANDARD
U.S. POSTAGE PAID
Honolulu, Hawaii
Permit No. 1479

66-437 Kamehameha Hwy., Suite 210
Hale'iwa, HI 96712

PROUDLY PUBLISHED IN
Hale'iwa, Hawai'i
Hometown of
Miss Hawaii 2010
Jalee Kate Fuselier



OFF da Island in the Caribbean

Waialuan newlywed Kim Thornton went to the Caribbean Island of Trinidad recently for her honeymoon. Bobby Chin-Sammy pictured here with Kim is her new husband and a native of Trinidad and relocating to Waialua to be with his wife. Kim works in Human Resources at Turtle Bay Resort and packed a recent copy of the NSN to show her new in-laws about the good times on Oahu's beautiful North Shore. Kim told the NSN "I thought it was ironic that there was a Zanzibar restaurant in Trinidad as well as Hawaii, so I had my mother take our picture holding the North Shore News. I brought the Andy Irons edition so that Andy could go to Trinidad." To learn more about our OFF da Island photo campaign turn to page 23.



Subscribe
to the
North
Shore
News

The North Shore News is delivered free to residents in Moku-leia, Waialua, Haleiwa, Kawailoa, Waimea, Pupukeya, Sunset, Kawela, Kahuku, and Laie. A subscription is available for other cities on Oahu, Outer Islands, or Mainland U.S. or Alaska for just \$27.00 per year for 25 issues for delivery by standard bulk mail (2-3 weeks Mainland) or \$48 delivered by 1st class postage (3-5 days). You may subscribe by using check, money order or credit card (VISA, MC, AMX).

Mail North Shore News to:

Recipient _____
 Address _____
 City _____
 Credit Card # _____
 Expiration _____

Return this form with payment to:
 North Shore News
 66-437 Kam. Hwy. #210
 Haleiwa, HI 96712

CLIP



Cholo's Homestyle Mexican Restaurant & Margarita Bar



Island Fresh Fish Tacos

Dine-In Burritos • Quesadillas • Nachos
Take-Out Enchiladas • Fajitas

637-3059

OPEN EVERY DAY
10:30 a.m.-9:30 p.m.



**"Hawaii's Best Little
Mexican Restaurant"**

All Major Credit Cards Accepted

Located in the North Shore Marketplace
66250 Kamehameha Highway Haleiwa, Hawaii 96712



FIND YOUR COUPON FOR *BUY ONE-GET ONE HALF OFF* PIZZA ON PAGE 16 OF THE NORTH SHORE NEWS!



EXECUTIVE CHEF
HECTOR MORALES

Leonardo's

AT TURTLE BAY RESORT

An Italian Sharing Experience



Turtle Bay Resort is pleased to announce the opening of Leonardo's, a restaurant bringing an authentic Italian dining experience to the North Shore.

Leonardo's will feature homemade and imported pastas, vegetarian dishes, risotto, osso bucco, daily specials, Italian desserts, wonderful Italian wines, and thin-crust, fire oven pizzas made with Italian Caputo flour & San Marzano Tomatoes starting from only \$14!

LEONARDO'S WILL BE OPEN FOR DINNER DAILY
5:30pm-9:30pm

LOCATED LOBBY LEVEL NEAR THE ELEVATORS

Parking is always COMPLIMENTARY for Restaurant Patrons.

For Dinner Reservations Call 293-6000.



Turtle Bay Resort
true hawai'i



The Hale'iwa Family Dental Center, Ltd.



Teeth Whitening Special

- 3 Week Supply of Professional Strength "Crest White Strips"
3X stronger than those sold in stores
- Crest Pro Health Whitening Toothpaste
- Crest Whitening Mouthwash
- Glide Whitening Floss
- Oral B Toothbrush

ALL FOR ONLY \$60 plus tax

New & Existing Patients only
Limited Supply

Call: 637-9652
for your reservation

We're conveniently located behind First Hawaiian Bank
in the heart of Hale'iwa.

Editor's Choice

"Not Always as They Seem"

(Author Unknown)

Two traveling angels stopped to spend the night in the home of a wealthy family.

The family was rude and refused to let the angels stay in the mansion's guestroom.

Instead the angels were given a small space in the cold basement.

As they made their bed on the hard floor, the older angel saw a hole in the wall and repaired it.

When the younger angel asked why, the older angel replied, "Things aren't always what they seem."

The next night the pair came to rest at the house of a very poor, but very hospitable farmer and his wife.

After sharing what little food they had the couple let the angels sleep in their bed where they could have a good night's rest.

When the sun came up the next morning the angels found the farmer and his wife in tears.

Their only cow, whose milk had been their sole income, lay dead in the field.

The younger angel was infuriated and asked the older angel how could you have let this happen?

The first man had everything, yet you helped him, she accused.

The second family had little but was willing to share everything, and you let the cow die.

"Things aren't always what they seem," the older angel replied.

"When we stayed in the basement of the mansion, I noticed there was gold stored in that hole in the wall.

Since the owner was so obsessed with greed and unwilling to share his good fortune, I sealed the wall so he wouldn't find it."

"Then last night as we slept in the farmers bed, the angel of death came for his wife. I gave him the cow instead.

Things aren't always what they seem."

Sometimes that is exactly what happens when things don't turn out the way they should. If you have faith in God, you just need to trust that every outcome is always to your advantage. You just might not know it until some time later because things are not always as they seem.

It is easy to love the people far away. It is not always easy to love those close to us. It is easier to give a cup of rice to relieve hunger than to relieve the loneliness and pain of someone unloved in our own home.

Bring love into your home for this is where our love for each other must start.

Mother Teresa, 1910-1997

Catholic Nun, Missionary and Nobel Prize Recipient



VALENTINE'S SALE!
FEB 7 THRU 14

20% OFF
All Xcel Regular-
Priced Items!

\$5 OFF
Already-Reduced
Red Tag Clearance!

2 SALES THIS MONTH!

PRESIDENT'S SALE!
FEB 19 THRU 21

20% OFF
ENTIRE STORE!*

*Regular-Priced Items

\$5 OFF
Already-Reduced
Red Tag Clearance!

\$10
Sale Rack!

Xcel Haleiwa Retail Outlet ONLY
66-590 Kam Hwy., Haleiwa
Phone: 637-3248
XCELWETSUITS.COM



Red Raider girls rule the mat

The Kahuku boys and girls wrestling teams participated in the Maui 43rd Annual Invitational Wrestling Tournament on December 21-22 at the War Memorial Gym in Wailuku, Maui. The Kahuku girls team came in 1st place out of 15 schools with a team score of 110. Congratulations to; Chale Chee, Samantha Shipley, Aarica Barcina, Kelsea Cass, Kristy Rabaino, Anela Santiago, Joreece Peapealalo and Libby Petrie. The Kahuku Boys team came in 4th place out of 15 schools with a team score of 107.

wanna learn?
NORTH SHORE
JU-JITSU CLUB
try it out free!
men-women-kids
NorthShoreBJJ@GMail.com

PAALAA KAI BAKERY'S
*** SWEETHEART DEAL ***



We've got a sweetheart deal for you and your significant other!

You can create your own one-of-a-kind Valentine cake over the phone and treat your "honey" to a grand surprise at a 15% discount.

CALL US @ (808) 637-9795

PLUS - receive a gift certificate for \$2 toward any of PKB's celebrated cream pies on your next visit!

Offer valid for Valentine cake purchases between February 12~15th, 2011. Please mention "PKB sweetheart deal" when placing your order.

Quality Tile Crafts
 "No job too big or small!"
 Specializing in Ceramic Tile, Travertine, Marble, & Slate
 Kevin Wilson
 cell (808) 864-4985 office (808) 638-8492
 www.QualityTileCrafts.com Free Est.

Olakino Maika'i

(Good Health)

by Naty Camit Hopewell

Quit Now

It's a new year and a time to consider ways to improve your health. If you smoke or chew tobacco, consider giving it up. Why? Let's review the statistics. Smoking kills more people than AIDS, murders, suicides, alcohol/drug abuse, car accidents and fires put together. In Hawaii, approximately 1,200 deaths annually are due to tobacco use. Up to 300,000 children suffer from respiratory problems because of secondhand smoke. Smoking contributes to emphysema, cancer, chronic bronchitis and heart disease and aggravates asthma. Children of women who smoke during pregnancy will likely suffer from respiratory problems, sudden infant death syndrome. Low birth weight and lowered IQ.

So what can you do? First, set a quit date which should be within two weeks. Second, ask for support from your family, friends and co-workers. Anticipate challenges the first few weeks, such as nervousness resulting from withdrawal. Third, remove tobacco products from your environment. Prior to quitting, avoid smoking in places where you spend a lot of time, such as at home, work and your car. Fourth, find an activity to replace smoking or chewing tobacco, such as chewing gum. Create a plan as to what you are going to do when you have the urge for tobacco, such as going for a walk. Fifth, make your home smoke free. If you need help, call 1-800-QUIT NOW (784-8669). They can provide free gum or patches. If you need additional help call your medical provider or Ko'olauloa Community Health and Wellness Center, Kahuku site 293-9231, Hau'ula 293-9216. Medications, such as Chantix and Zyban, which help decrease the urge for tobacco, require a prescription. The health center also has a health educator who can assist and support you.

Think of your health (and your family's) and Quit Now!



Remembering Henry Lopez

August 22, 1958 - January 1, 2011

The Lebanese poet Kahlil Gibran wrote, "Generosity is giving more than you can, and pride is taking less than you need." The members of Manu O Ke Kai Canoe Club wish to pay tribute to a dedicated paddler who exemplified these traits.

Henry Lopez moved to Hawaii from San Diego in 1995. The rhythm of the ocean suited him. Like him, the sea could be both intense and gentle, in motion and constant. Settling in Waialua, he raised his two beautiful daughters, Salina and Miranda. As one friend put it, "Every decision he ever made, he made with them in mind." A skilled tradesman, he gave freely of his labor, putting off his own home improvements to help others with theirs. His co-workers in construction admired his remarkable work ethic and unflinching drive to get the job done.

In paddling, it was the same. The moment the race started, Henry put his head down and paddled, setting the pace for his crew. He pushed hard and with purpose every stroke, all the way to the finish. This is also how he led his life.

In his hearty laugh, smiling eyes, and inescapable grin, his appreciation for all the things he found rewarding—playing music, loving his family, and enjoying time with friends—was apparent.

On New Year's Eve, Henry dismissed himself from the night's festivities early, citing a headache. At midnight, he got out of bed to watch the fireworks with his 14-month-old grandson, Freddie Pontiac. Henry returned to sleep, and as the year passed from one to the next, so, too, did his life. He was 52. As his family and friends mourn his inexplicable loss, they also celebrate the life he lived—one marked by generosity, honor, resilience, and a spirit that refused to be defeated.

Aloha, Henry. You will be missed.



Miss Hawaii misses the big jackpot in Las Vegas but still wins \$20,000 worth of scholarship placing 2nd runner-up Miss America

By Ron Valenciana

From the very start of competition for the recent 2011 Miss America Pageant at the Planet Hollywood Resort in Las Vegas, Miss Hawaii Jalee Fuselier from Hale'iwa was in top contention to win the crown. During the first night of competition on January 16, Miss Hawaii Jalee Fuselier was named Tuesday evening's preliminary Lifestyle and Fitness winner of the 2011 Miss America Pageant presented by DSW at Planet Hollywood Resort & Casino in Las Vegas. Jalee was the preliminary winner in a black Swim 'n Sport swimsuit and will receive a \$1,000 scholarship for her win. When the pageant was over Jalee had earned a total of \$20,000 in scholarships. "We are very proud of our representative's initial success at the pageant," said Miss Hawaii Organization President Lincoln Jacobe.



"Jalee has worked very, very hard to achieve this success."

Jalee excelled in other competition events including talent and question & answer. She al-

ways appeared calm and confident and radiant. There was real hope she would go all the way by her supporters in attendance and no doubt that she would remain through the final cut, which she did. With three final beauty contestants remaining including Jalee, she was chosen by the panel of judges as 2nd runner-up.

There were a strong contingency of supporters from Hawaii and the North Shore in Las Vegas, Nevada for Jalee, including several past Miss Hawaii beauties. They all told her how proud they were of her success.

For now, Miss Hawaii Jalee Fuselier is taking a well deserved rest and returning to her home in Hale'iwa to carry out her duties and privileges as Miss Hawaii through June 2011 when a new Miss Hawaii will be chosen.

Polynesian Treasures

Hawaii's largest selection of Polynesian handicrafts and Hawaiian inspired gifts.

North Shore Marketplace • Haleiwa, Hawaii
Open daily from 10 a.m. • 808-637-1288

DRAFTPLANS HAWAII

- Over 10,000 floor plans & blueprints available for purchase online. Gather ideas for your own design.
- Drafting Service available for new home designs, additions, renovations, decks, fence, rock walls, etc.
- Free property specifications & title search info.

www.draftplans.com

Call for free estimates:
265-0035




PAALAA KAI BAKERY'S SWEET SAVER SPECIAL



CLIP THIS COUPON

Receive PKB's lip-smacking sweetbread for a reduced price of \$3.50 each.

Coupon can also be used toward a tub of Lilikoi Butter or Mango Butter at a 20% discount.

Visit us online @ www.pkbsweets.com
Offer expires 02-16-2011.
While supplies last.

Operation: Send A Smile accomplishes holiday mission

On 17 December 2010, Cadet Battalion Commander, Lieutenant Colonel Harmony Kahaka's vision became a reality with Operation: Send a Smile. They are students a Kahuku High School, 18 Special Education students in the class next door to the JROTC class. We see them arrive every morning to attend school, we say hi to them and they send us smiles everyday. We are proud of all of our students here at Kahuku High School, and we love all of our students.

A few months ago, the Battalion Commander, sitting in her chair in the center of the room as the student Staff members briefed her on the current weekly staff meeting. Each Staff member prepares their slide and delivers a detailed update on their area of responsibilities. During one staff meeting in October, she asked to see what can we put together for the kids next door for Christmas. The staff began to work on brainstorming ideas and briefed her a week later on several Courses of Action. The one she decided on was Operation: Send a Smile, to have Santa Claus and his elves deliver presents to these very special 18 high school students.



Logistically the elves began to make pillows, blankets, and with help from the Hawaii Army National Guard, and donations made by the other 94 JROTC cadets at Kahuku, the Red Raider Battalion began putting this plan into action. As the event was coming down to the wire, Santa Claus, Cadet Captain Jayce Young and all his elves delivered each Christ-

mas bag stuffed with goodies and presents to give to each of these brave young boys and girls. Cadet BN CDR Kahala, claimed that this one event made her feel so good inside, and touched all of the Cadets that they had to honor these special children.

Story by LTC (RET) Tim Schiller, Senior Army Instructor (SAI) Kahuku High School.



The night of December 10th, 2010 was a complete success for the Kahuku JROTC Red Raiders Battalion. The cadets displayed great pride and dedication as they lead the Hale'iwa Christmas Parade. The Color Guard was successfully commanded by Cadet Captain Jayce Young, and the Battalion was commanded by Cadet Command Sergeant Major Andrickson Manuel.



St. Michael school gets new classroom

St. Michael School expanded the campus in adding a new classroom that will hold our 6th grade class. This expansion enables the school to dedicate a classroom for a computer lab, that all students will have access to throughout the day. Construction was completed by a community contractor, Puli Construction.

On November 19, 2010, the new classroom was presented to all the students, faculty, staff, and families during our annual Thanksgiving program. Students, faculty, staff, and families were welcome to peruse through the new layout of the classroom and recognize all the people who were involved in its completion.

St. Michael School's principal, Mrs Arecchi, faculty, staff, and students would like to thank everyone who helped make this vision into a reality. (Pictured: Principal Arrecchi & Father Jonathan Hurrell)

The Salvation Army Family Store
- Wahiawa store only

**All clothing 50% off
every day and
\$.99 clothing specials
on Fridays**

open Mon-Sat 9am-6pm
subject to change



For more information contact:

Fred Deisser at 808-522-8425
Located at 322 Sumner St., Honolulu 96797
Across from K-Mart in town

FREE TOWING
unwanted vehicles

"It's time to move it on out"

808-636-7183

We also offer islandwide towing
and roadside assistance

North Side Towing

*Blocked calls will not be answered.



**A Message From
State Representative
Gil Riviere**

Aloha. With the convening of the 2011 Legislative Session, bills in both the House and Senate are introduced, assigned to committee and begin moving through the legislative process. Due to the pace of the legislative session, I recommend visiting our website to find the latest information on bills, and issues in our community.

GilRiviere.info allows readers to sign up for our email newsletter, post your concerns, follow my Facebook page, access useful links to other agencies and services such as the Capitol website, and helps keep our community connected.

Join the discussion in person at either of two community talk stories in our district. The first is at Waialua Community Association, Cottage 2, on Wednesday, January 26, 2011 at 6:30 p.m. – 7:30 p.m. and the second is at the Kahuku Community Center on Tuesday, February 1, 2011 from 6:30 p.m. – 7:30 p.m. hosted by the Kahuku Village Association, Inc. We hope you are able to attend for light refreshments and to talk story.

After torrential rain on the North Shore over the

past two months, the State Department of Transportation's paving crew began their 2011 pothole repair schedule for Wahiawa to Mokuleia the week of January 3rd and from Hale'iwa to Kahaluu the week of January 10. The paving crew should return to the area every 5 weeks. We are requesting more detailed schedules for roadwork and re-surfacing and will provide that information as it comes available.

Ann Otteman has joined my staff for the 2011 session as the Committee Clerk/Legislative Aide. Ann's legal background and legislative experience fit well in our office as she joins Jacquelyn Skaf and Trina Ishii to complete my 2011 legislative staff, all of whom reside in the district.

If you are bi-lingual, like to work flexible hours and help people, there are job opportunities at the Hawaii State Judiciary as court interpreters. Court interpreters can earn \$25 to \$55 per hour with a 2-hour base minimum. Applicants must submit a Court Interpreter Certification Program Application, attend a Basic Orientation Workshop (BOW), pass written English and Ethics Exams and clear a criminal background check to be placed on court interpreter registry. Applications and additional information can be found on the Judiciary website at courts.state.hi.us/courtinterpreting.

Please do not to hesitate to call 586-6380 if you have a concern or suggestion for our district or the state, and stay up to date on news and Legislative activity at GilRiviere.info. Aloha.

Expires Jan. 31, 2011



**THE SURF-N-SEA
ANNIVERSARY BLOW-OUT SALE!
EVERY ITEM ON SALE!**

Surfboards, Bodyboards,
Stand-Up Paddleboards,
Dive Gear, Clothing,
Sunglasses, Leashes,
Wetsuits, Watches,
Shorts, Trunks, Footwear,
Skateboards, T-Shirts,
Jewelry, Fins, Racks,
Boardbags, Snorkels,
Masks, Spears, Hats,
Backpacks, and ...
MUCH MUCH MORE!!
EVERY ITEM IN THE
STORE IS SALE PRICED!



**637 - SURF
(7873)**

**637 - DIVE
(3183)**

62-595 Kam Hwy
HALEIWA, HI 96712

Hawaii's Ocean Sports Headquarters!

DAILY SURFING AND STAND-UP PADDLING LESSONS
INTRO DIVES (NO EXPERIENCE NECESSARY)
SCUBA & SNORKEL GEAR, SHARK TOURS
3 DAY PADI CERTIFICATION



HAWAII'S LARGEST SELECTION OF
NEW & USED SURFBOARDS
WORLDWIDE SHIPPING AVAILABLE
RENTAL SURFBOARDS & BODYBOARDS
SURFBOARD PACKAGING & 24 Hr. DING REPAIR

**THIS IS HOW YOU GET THERE
FIND THE OCEAN AT SURF N SEA!**

Visit Us At www.surfensea.com



SURFERSCHURCH
FOOD . FELLOWSHIP . THE WORD

Saturday Nights 6:30 PM
66-341 Aukai Lane,
Haleiwa 96712
388.1910

surferschurch.com

SIX SPECIAL NIGHTS

MONDAY
\$2.50 BEER
BOTTLES & DRAFT

TUESDAY
\$5.00 OFF PIZZA
REGULAR OR LARGE

WEDNESDAY
SALAD NIGHT
1/2 OFF SALADS

THURSDAY
\$3.50 NIGHT
\$3.50 SLICES,
SALADS, MAI TAI'S,
WINE & BEER



SATURDAY
\$4.50 NIGHT
\$4.50 SLICES,
SALADS, MAI TAI'S,
WINE & BEER (or less)

FRIDAY NIGHT \$5.95 BURGER & FRIES

Dine In Only - 4:00 PM Until Closing - Haleiwa Shopping Plaza - 637-5095

PLUS \$2.00 Off with this Coupon

Some Restrictions Apply. See Restaurant for Details.
When Ordering Regular Priced Items. Good Anytime. One Coupon Per Person.
Can Not Be Combined with Other Discounts. Expires 03/31/2011.

2010 Triple Crown of Surfing wrap up

By Jodi Wilmott / OCEAN PROMOTION

The Vans Triple Crown of Surfing, presented by Rockstar Energy Drink, concluded its 28th season in December, successful in both of its endeavors: to showcase the world's best surfers in the world's best waves, and to focus the spotlight and tangible support to numerous local organizations, schools and community programs.

When all was said and done, the professional surfing events garnered record media coverage and public interest — particularly via the live webcast and live Oceanic television broadcast around Hawaii. On the community side, more than \$35,000 in donations were distributed by the Vans Triple Crown.

Before competition even began, Vans joined forces with Ke Ala Pupukea bike path restoration and sand replenishment program, in cooperation with the North Shore Outdoor Circle, by way of a \$10,000 donation to restore the bike path and sand loss at Sunset Beach.

On the surfing side, Hale'iwa quite possibly stole the show this year as the Reef Hawaiian Pro put on not only a world class professional surfing tournament, but also brought together four of surfing's all-time legends - Tom Curren, Tom Carroll, Mark Occhilupo and Sunny Garcia - for the Reef Clash of the Legends. With back-to-back days of insane Hale'iwa surf, the Legends put on a show that came close to eclipsing the performances of their contemporaries. There was also the Miss Reef World Championship and the breath-taking Sky Dive Hawaii drop onto the stage at Hale'iwa.

Australian pair Joel Parkinson and Stephanie Gilmore showed exactly how serious they were about retaining their Vans Triple Crown titles for another year, both posting convincing victories in the men's and women's feature events. The win was especially sweet for Parkinson, who was forced to sit the majority of the year out with a serious foot injury, only to return to defend his Triple Crown title and open up his account with a perfect 10 on his first wave back in competition.

Before departing Hale'iwa, Vans' very own Steve Van Doren, son of the original founder of Vans shoes, personally delivered a truckload of shoes and shirts to Waialua Elementary School to assist with their shoe and clothing drive.

Hale'iwa Ali'i Beach Park also received a financial contribution for their ocean recreation programs, as did the Waialua Complex of the Department of Parks & Recreation, and the Waialua Bandstand, and Operation Toy Box.

Sunset Beach played host to the O'Neill World Cup of Surfing for both men and women. In contrast to Hale'iwa, Sunset turned into a waiting game and competition was consolidated down to just three days after limited winter surf mandated a change in

plans. In the end, Brazil's Raoni Monteiro became the second South American to ever win a men's Triple Crown event. For the women, 16-year-old Tyler Wright of Australia (also a finalist at Hale'iwa) claimed the winner's cup and sealed herself a spot in the Vans Duel for the Jewel at Pipe.

For the local community, Sunset Beach Elementary's "Right on Reader" program was a grant recipient, and Kahuku High and Intermediate School received a grant for their water polo program. Other beneficiaries included the Rell Sunn Educational Fund, the Outrigger Duke Kahanamoku Foundation, and the Oahu Chapter of the Surfrider Foundation.

To Pipeline, where the final showdown for the Vans Triple Crown men's and women's titles unfolded, along with the Billabong Pipe Masters and the first ever women's Pipeline event within the Triple Crown series: the Vans Women's Duel for the Jewel.

Pipe set an unusual stage with so much sand still filling the inside reef. All of the action was focused at Backdoor and despite the unusual appearance of the lineup, there were still plenty of lengthy barrels to be had. When it all shook out, French youngster Jeremy Flores claimed the first major title of his career by winning the Billabong Pipe Masters, and Stephanie Gilmore clinched the women's "Duel" to take home the Vans Triple Crown title for a third year running. The men's Triple Crown title was again won by Joel Parkinson - his third - despite his early elimination at Pipe.

The Vans Triple Crown of Surfing would like to sincerely thank the ongoing support and enthusiasm of the North Shore community. Vans would also like to send their warmest aloha to the Irons Family. The 2010 Vans Triple Crown deeply missed the presence and inspired surfing that Andy has consistently contributed throughout the years. His performances played a large part in elevating the Triple Crown to what it is today.



2010 Triple Crown Champion Joel Parkinson (AUS)



Councilman
Ernie Martin
Serving You in District 2

Following the swearing in of the four new members on January 3, myself included, the City Council got right down to business. Meeting schedules for the eight Standing Committees have been set and assignments were made by Council Chair Nestor Garcia. I was selected as the Chairman of the Budget Committee (BUD) as well as the Vice-Chairman of the Committee on Transportation and Transit Planning (TTP). I am also a member of the Committees on Zoning (ZON), Executive Matters and Legal Affairs (EMLA), and Safety, Economic Development and Government Affairs (SEG). Additionally, all voting members of the Transportation Committee serve on the Oahu Metropolitan Planning Organization (OMPO). These are important assignments and the Budget Committee in particular is of critical importance as we work to balance limited resources with escalating demands for city services. Mayor Carlisle's administration is now in the process of preparing his budget to be submitted to the Council in March. In a recent appearance before the State Legislature's mon-



Councilman Martin enjoys his first day on the job at Honolulu Hale

ey committees, Mayor Carlisle stated that his top priority is to stabilize the city's budget while maintaining core services. He also stated that the most significant cuts will probably occur in the City's CIP budget. While I agree with the Mayor on the need to stabilize our budget, one of my own top priorities will be the completion of the many pending CIP projects already on the books, such as the repaving of California Avenue in Wahiawa, the Wahiawa Transit Center, the proposed walkways in Hale'iwa, and the completion of the Banzai Rock Skate Park to name just a few. I intend to scrutinize all budget proposals to ensure that we follow through on our commitments to the public and that we maintain an optimum level of services affecting the health and safety of our community. I also plan to explore every opportunity to reduce costs now without compounding expenses down the road. In our community, as in most of the districts on Oahu and the rest of the state, much of our existing infrastructure has suffered from the lack of funds or outright neglect. We cannot afford to be penny wise and pound-foolish on routine repair and maintenance of public facilities. It will only cost us more in the long run. There will be many opportunities for public input on the budget process in the coming weeks and I welcome your comments and suggestions at any time. Mahalo.



Anna Coyle Miller

Anna Coyle Miller, 89, of Volcano died Dec. 24 at Hilo Medical Center. Born in Hamilton, Ohio, she was the wife of Dr. Rodman B. Miller and supported him in his practices in Waialua and Hale'iwa for almost 40 years. Memorial service will be held Saturday, February 5th, 2 p.m. at Waialua United Church of Christ. In lieu of flowers, donations suggested to Boy Scouts of America, 42 Puiwa Rd., Honolulu, HI 96817 or Hawaiian Humane Society, 2700 Waialae Ave., Honolulu, HI 96826. Survived by, husband, Dr. Rodman B. Miller; daughters, Antya Miller and Lisa Miller Simmerman; brother, Joseph Coyle Jr.; three grandsons; one granddaughter.

North Shore Food Bank

You can help feed the North Shore's homeless & hungry by donating non-perishable canned foods to the North Shore Food Bank located in the North Shore News office above the Hale'iwa Post Office.

637-3138

Prefer to contribute financially?
 Check can be made out to:
 Once A Month Church
 P.O. Box 117, Hale'iwa, HI 96712

TOP 5 MOST NEEDED ITEMS

- Financial Contributions
- Canned meats or tuna
- Canned meats & soups
- Canned vegetables & fruits
- Canned beans

No donation is too small.

501c3 non-profit

**** **SUNSET BEACH CHRISTIAN SCHOOL** ****

**** **OPEN ENROLLMENT** ****

Quality Private Education

Small Class Sizes

Please call 638-8274 for an application

sbcsoffice@hawaii.rr.com
www.sbcswebsite.com

- One-on-One Instruction
- Progressive Educational Curriculum
- Focus on Christian Ethics and Values
- Technologically Enhanced Education
- Innovative Teaching Methods
- Caring and Concerned Faculty

Serving the North Shore since 1953



Association of Christian Schools International

Sunset Beach Christian School is a mission of Sunset Beach Christian Church † www.sbcs.org

An Attitude of Servitude

by Kalau Herrod-Isomura and Dena Cowles

Remember kindergarten? Your teacher asks, "What do you want to be when you grow up?" Doctor! Policeman! TEACHER!

For me, I knew I'd be a servant. I'd give back to the community, and, 23 years later, I am serving as kindergarten teacher at Sunset Beach Christian School.

My journey at Sunset Beach Christian School started in the 2nd grade in 1991. I attended SBCS until the completion of my 8th grade year. They say teachers have an impact on lives but are unaware of the significance of their influences. Along my educational way, my heart was touched by three special teachers. Miss Judie Peterson (affectionately known as Miss Pete) instilled in me her passion for Hawaii, Hawaiians and Hawaiiana. I was her "Lau Lau," and we maintain our unique relationship still today. Miss Alene Miller demonstrated patience and perseverance. She showed me daily how to endure difficulties with grace and maintain a positive outlook on life no matter the circumstance. Miss Ellie Otake was instrumental in my decision to become a teacher. She continuously exemplified faithfulness and love and still does today. She was motherly and encouraging yet diligent about our commitment to learning – not only academics but God's promises.

My high school days were completed at Iolani

School, and I graduated in 2001. I was blessed with two scholarships, one from Kamehameha as well as the ICW-Washington Mutual Future Teachers of Color scholarship while attending Whitworth College in Spokane, Washington. I was a Laureate Society member and graduated with honors with a B.A. in Elementary Education, a B.A. in PE, Health and Fitness and a minor in Special Education. During my student teaching, I developed a passion for kindergarten.

Hawaii is my home so I returned to teach at Kamehameha Schools and Haleiwa Baptist Preschool. Last year, I was presented with the opportunity to return to SBCS. I have come full circle, so to speak.

Yes, I'm a proud SBCS Alumnus – I remember the school song, and my roots are engrained here. From learning, to building friendships, to being the Lei day Queen, to loving God; I did it at this school. My teachers encouraged me so I could achieve my highest potential: reaching goals, submitting myself unto the Lord, and being His servant.

I would love the opportunity to serve you and your child(ren). Open enrollment at Sunset Beach Christian School is happening. You, too, could begin your child's journey for a committed Christian education at a school that has been serving the North Shore since 1953. We invite you to view our website and obtain an enrollment application. Why wait? Let YOUR child's journey begin today.

WHAT HAPPENS IF THERE'S NO MORE FOOD?

The North Shore Foodbank Needs Your Help!

Presently, our food pantry shelves are short on food for our hungry North Shore neighbors. Some are homeless but not all. Many are senior citizens on fixed incomes. Many are children and teens. Many are working poor and laid-off workers needing food assistance for the first time. You can make a difference for needy individuals and families who are struggling with hunger and have no where else to turn. Last month we distributed over 1,000 food bags. Each bag had 10-12 cans of food.

**If You Can Give We Need Your Help.
Now More Than Ever.**

TOP NEEDED ITEMS

- Financial contributions
- Canned meats/tuna
- Canned meals*
- Canned soups
- Canned fruits & vegetables
*spaghetti, chili, spam, corned beef, vienna sausage

DROP OFF

North Shore News
Hale'iwa Post Office
2nd Floor

Cash Donations payable to:
Once A Month Church
P.O. Box 1117
Hale'iwa, HI 96712

WHAT HAPPENS IF NO ONE HELPS?

808-342-3969

501c3 non-profit org.

Oceanside Chapel Service at Turtle Bay Resort



Every Sunday at 9 a.m. in the beautiful oceanside wedding pavilion.

Hosted by Pastor Ron Valenciana

- Non-denominational 45 min. service
- Traditional & Contemporary music
 - 15 minute sermon
- Free gift to all first-time visitors
- All are welcome! Free validated parking

For more information call Pastor Ron at 342-3969.

*When church is pau,
enjoy dining at the Palm Terrace,
Hang Ten Pool Bar, or Lei Leis.


Turtle Bay Resort



What North Shore Disaster Preparedness Meeting

When January 29, 2011 at 9am

Where Cottage 2 Haleiwa Gym

Who Civil Defense, Red Cross, NOAA

Why A FREE service to Prepare for Hurricane, Tsunami, Flood, and Fire

Hosted by North Shore Chamber of Commerce
and Waialua Community Association

For More Information please contact
North Shore Chamber at 637-4558 or Jay Oku at
393-0707





NEXT SERVICE THIS SUNDAY JANUARY 30

come early to register for free give-aways..service begins at 10am

Once A Month Church

2011 SCHEDULE



Pastor Ron Valenciana

P.O. Box 117
Hale'iwa, HI 96712

January 30
February 27
March 27
April 24
May 22
June 26

July 31
August 28
September 25
October 30
November 27

Hale'iwa Beach Park

FOR MORE INFO CALL:
808-342-3969

WWW.ONCEAMONTHCHURCH.COM

Announcing our . . .

2011

NORTH SHORE NEWS

Restaurant Directory



Publication date: March 9
Deadline date: February 24

Owners & Managers:
Reserve your ad space today.

637-3138

or email: NShoreNews@aol.com

NORTH SHORE NEWS

~ Special 25% Discount Offered. ~

Leonardo's

AT TURTLE BAY RESORT

An Italian Sharing Experience

**BUY ONE PIZZA AT REGULAR PRICE
& RECEIVE THE NEXT 1/2 OFF!**

PRESENT THIS COUPON TO YOUR WAITER - FOR DINE IN ONLY
EXP: 3/15/2011

**OPEN FOR DINNER DAILY
5:30pm-9:30pm**

LOCATED LOBBY LEVEL NEAR THE ELEVATORS

Parking is always COMPLIMENTARY for Restaurant Patrons.
For Dinner Reservations Call 293-6000.

BULLETIN BOARD

LIC. #AC 18275



COWPER CONSTRUCTION
GENERAL ENGINEERING CONTRACTOR

Full Service Sitework Contractor
Septic Systems & Tanks
25 yr. exp.
Michael Cowper 638-7200
cowperhawaii.com



ROB'S
auto repair service

Robert Oakley Owner
ASE Certified Master Mechanic
Computer & Electrical Specialist
Waialua, Hawaii
(808) 330-0459

N-C PLUMBING & SUPPLY



Cont. Lic. No. C-8913

- RESIDENTIAL & COMMERCIAL SALES & SERVICE
- CONTRACTING & DESIGN • HOME PLUMBING SERVICE
- PLUMBING FIXTURES, HEATERS • FREE ESTIMATES

Nestor P. Calilao (Owner)
P.O. Box 769
Waialua, HI 96791

Bus: 637-8662
Res: 638-5157
Cellular: 372-8718
Fax: (808) 637-0486


email: nncplumbing@hawaii.rr.com



DR. PORTER TURNBULL
Chiropractic Orthopedist
(808) 638-8740
Appointments available Mon.-Sat.
(evenings by appointment)

- Industrial accidents & auto injuries
- Sports injuries • Spinal care
- Safe, Effective, and Gentle

Bank of America



Home Loans

Jay Oku
Mortgage Loan Officer

Tel: 808.275.8900 Cell: 808.393.0707
jay.oku@bankofamerica.com

HI2-902-01-03
55 Merchant St 16th Floor, Honolulu, HI 96813
Equal Housing Lender



Specializing in vegetarian foods, vegan foods, whole foods, organic food. Wheat free, dairy free, raw foods, gluten free. A complete selection of natural foods for 37 years. Make earth day, everyday.

Open 7 days.
Mon.-Sat. 9am-6pm.
Sun. 9am-5pm

66-445 Kam. Hwy
Haleiwa, Hawaii 96712
Next to the Post Office
808-637-6729 • 808-637-1922 fax

HAIR SPECIAL
Full Highlight and Cut \$100.00
GINA WALKER
Hairdresser to the stars
from Malibu, CA
Cut and Highlight Master
Open Mondays
AT SALON ATLANTIS
375-3984 • 637-5211

MacMurray and Sons Construction LLC
New Construction. Remodels, Granite.

Jason MacMurray
BC 30144
Licensed, Bonded, Insured

1-808-479-7365
Fax: 808-638-7121
Jason@macmurrayandsons.com
www.macmurrayandsons.com



Waialua Bakery
New Hours:
Open Monday - Saturday
10am - 5:00pm
fresh sandwiches, smoothies, and baked goodies
808-341-2838
Fresh Fruits and Greens supplied by:
Farmer and The Baker llc
808-341-1992

Animal Clinic Mililani



- Preventive medicine from pediatric to geriatric life stages
- Same day appts for sick pets
- Experienced friendly staff
- Veterinary acupuncturist

Dr. Harvey, Dr. Kim
96-221 Kipapa Dr. Mililani
623-2814
Call for an appointment



Boutique Hotel

Dear Editor:

Hale'iwa and Waialua are still quiet, local, an area where residents live with modest tourism. But one merchant passionately told me that he wants the Anahulu Stream bridge torn down and widened to increase traffic flow for business. The Rainbow Bridge?

Now developer Anderson plans Hale'iwa Hotel. And the City Council and Department of Planning and Permitting have quietly altered the North Shore Sustainability Plan, submitted Dec. 14, 2009, to read that the one "country inn" can have more than 40 rooms. The developer said in public that even 80 rooms "might not pencil out." Then, at the hearing over sale of this reserve parkland for a hotel, mauka of the maintained beach park, a City representative said that towns can't stipulate just one hotel.

Developers don't build with their own money. Hotels breed. Variances are given for additional rooms. Figure Kyo Ya's attempt in Waikiki to violate shoreline setback. And the "Envision La'ie" plan for a 300 room Marriott, a new shopping mall around the corner from Turtle Bay and its plan for four more hotels. More "affordable" housing on Ag land. Try traffic on the two lanes. Road expansion. More cars, buses and limos at Hale'iwa Hotel. Imagine new corporate, global owners pressuring for permission from the City to develop the other P2 parcels for more hotels fronting Hale'iwa Beach Park, "sunset view condos" overwhelming the beach. Remember the plan for a hotel on the Polo Field when Sankyo owned Dillingham Ranch? The North Shore a new Miami? Goodbye Rainbow Bridge.

The history of Waikiki, Kona, Lahaina, Ko'olina, teaches that the threat of tourist and new residential development can extend from permission to build one hotel, especially when the developer's "dream" brazenly wants established Preservation Land. Developer and salesman Anderson's buzz word is "remnant," to suggest these parcels are waste, useless, that he's doing us a favor putting a hotel there. But, Honolulu Ordinances state that "remnant" means "a parcel of land economically or physically undesirable for development or utilization by reason of location, size, shape, or other characteristics."

These floodplain parcels across from Hale'iwa Beach Park ARE "undesirable for development" ...for hotels. They are "physically" perfect for enlarging the park. And what is more "economically desirable" than FREE public land. Like air. Room to breathe. Ours.

The Office of Budget and Fiscal Services refused to sell this land to developer Anderson in 2006, saying it is valuable parkland, not a site for a Long's Drugs.

One hotel will ease way for the North Shore Sustainability Plan to instate "resort zoning." Or the City will change it under developer pressure. Imagine resident owners, across from Ali'i Park and the harbor, over-taxed for infrastructure and emotionally displaced by traffic and commerce, enticed to sell their homes, to be replaced by a white mountain range of hotels. Imagine the proposed Hale'iwa Hotel buried among monster hotels, as is the Royal Hawaiian.

People come to Hale'iwa to experience an historical, quieter time, rural charm, a resident population with a way of life intact. Imagine the destruction of the Rainbow Bridge. Instead, see a huge park extension mauka of Hale'iwa Beach Park, an open, natural place for generations of residents and visitors. Kamehameha School might help. The North Shore may have just this one chance left to prevent hotel development in Hale'iwa.

PAUL NELSON

Waialua, December 2010

YMCA Camp Erdman kicks off their Annual Support Campaign

Mention YMCA Camp Erdman and instant reminiscence of childhood memories flood kama'aina and long time local residents' minds. Sharpening their archer techniques, working as a team to complete the ropes courses, and splashing around the pool to cool off on a warm summers day, are just a few of the activities remembered. What many people do not remember is that YMCA Camp Erdman is one of several non-profit YMCA of Honolulu branches that have remained dedicated to transforming lives here in the islands for almost a century. YMCA Camp Erdman offers school programs specializing in Environmental Education and Leadership, Family Retreats, beautiful natural surroundings and facilities for Conference Groups, and Resident Camps during the summer as well as fall and winter intersession. We proudly serve a diverse population of over 20,000 people each year. In order to continue providing our programs to bene-

fit people of all ages and backgrounds, we look to our community for help. We offer Financial Assistance (based on availability) for those that are in need of help for their school, family, or child participant in



our many life changing experiences that are offered year round here at Camp. These funds are acquired through the generosity of donors such as you along with our staff and board members. While we accept donations year round we kick off each year with new goals during our Annual Support Campaign held February through March. We look forward to adding your name

to our donor list this year. Remember a donation does not need to be monetary it can be volunteering your time to help support YMCA Camp Erdman through programming, service projects, or signing up to help as an "asker" with our Annual Support Campaign.

BULLETIN BOARD

BOW WOW BUNGALOWS

Licensed Boarding Kennel
North Shore, Oahu

Reasonable Rates • Ph. 637-2562

These Dogs Have Fun!



The Roof Repair Specialists

"The Name Says It All"

Roofing
Repair • Maintenance
Coatings • Decking • All Types
Lowest Price • Guaranteed
Free Estimates • Insured

Dave McEuen
dave@theroofrepairspecialists.com

For Prompt Service
888-8290

Island Wide 24/7
"Family Owned and Operated"

Paradise Lua



Parties • Special Events
Anykine Private or
Public Functions

"Portable Sanitation at its finest"

690-8116



Featuring the largest selection
of certified organic produce
on the North Shore.
No panic...ours is organic.
Open 7 days.
Mon.-Sat. 9am-6pm.
Sun. 9am-5pm

66-445 Kam. Hwy
Haleiwa, Hawaii 96712
Next to the Post Office
808-637-6729 • 808-637-1922 fax



ISLAND PROPERTIES

SHERRILL ERICKSON

Realtor Associate
Res. (808)293-1056 • FAX (808)955-9541
2615 S. King St., Suite 2E/F
Honolulu, Hawaii 96826
Serving the North Shore since 1980

Financial Management Solutions

Secure Your Future With Professional Planning

- Tax Preparation • Financial Planning
- Accounting • Quick Books Advisor
- Small Business Advisory Service
 - Estate & Senior Planning
- Wealth Preservation Strategies

808-637-9690 fms@hawaii.rr.com

Located in North Shore Marketplace
66-250 Kamehameha Hwy. Suite C-209 Haleiwa, HI 96712



"HONEST DEALS ON QUALITY CARS & TRUCKS"
Established 1985

LINNE HOLMBERG

Owner

530 Paiea St.
Honolulu, HI 96819

Lonestarmotorsportsllc.com

Honolulu: 834-0808
Fax: 834-6602
Cellular: 222-4272

When it's time to tie the knot...

www.hawaiiweddingminister.com

informal beach weddings a specialty

(808) 342-3969

Weddings • Luau • Festivals • Special Events



By Omar the Tent Man

94-158 Leole St.
Waipahu, HI 96797

Dennis Young
Sales

Tents, Tables
Chairs & all
your event needs

OFFICE: (808) 677-8785
FAX: (808) 677-1973

DennisOmar@hawaii.rr.com
www.HawaiiTentsAndEvents.com

SUNSET AUTO SERVICE, INC.

- Auto air conditioning specialist
 - Auto engine maintenance
 - Safety inspection station
- Walking distance to Wahiawa DMV

Call for appointment
622-5510

Matt Verdadero
207 N. Cane St., #1 Wahiawa



CLASSIFIEDS

The North Shore News is published every other Wednesday and mailed free of charge to all North Shore homes and businesses. Extra copies may be obtained at our office.

PRESS RELEASE POLICY: Submit press releases in person or by fax, mail or email to Editor, North Shore News, P.O. Box 1117, Haleiwa, HI 96712. Please type your releases and keep them shorter than 200 words unless they are of an unusual news interest. Releases should be viable news stories and are published on a **space available basis only**, with priority given to those received in our office first. You may attach photos. We are not responsible for the return of any photos. All materials are submitted at owner's risk. We reserve the right to edit and/or refuse all submissions including advertising.

EDITORIAL POLICY: We welcome articles and letters from our readers. Letters to the Editor are published on a space available basis only and preference is given to shortness of length, and quality of content. We prefer to run not more than one letter, per person, per 6 month period. Letters subject to edit.

Views expressed by our contributing writers and advertisers do not necessarily reflect the view of the management and staff of the North Shore News. All rights reserved. Reproduction in whole or part without permission is prohibited. © 2011.

PUBLISHER/EDITOR
RON VALENCIANA

TYPOGRAPHY
DOWNTOWN GENERAL STORE

BOOKKEEPING & CLASSIFIEDS
LINDA SEYLER

CONTRIBUTING WRITERS
RON VALENCIANA,
BUTCH HELEMANO,
NATY HOPEWELL

♥♥Need a minister for a North Shore wedding? Hundreds of knots tied for happy couples on Oahu. Simple beach-side ceremonies to formal church or chapel services. I'll make your special day an extraordinary memory. Call & leave clear message with phone number & possible date, time & place. 342-3969. Also: Vow renewals, house blessings, baby luaus.

PAUMALU ELECTRIC
David C. Hancock
638-9054 / Lic#C18074

SHORE ELECTRICAL SERVICE
New Const-Remodels
638-0049 / Lic#C20777

FREE Pregnancy Test
Above Haleiwa Post Office
Call for hours 779-4685

LGR Construction
Remodel • Repair • Design
Drafting • Painting • Small Jobs
Affordable rates. 343-4453/Lic#26759

Dog/Cat Nail Trimming
at your home only \$15.00
Call Julie 637-5395

Aloha Computer
PC Repair/Virus Removal
Fax/Copy/Internet Access
372-2667 or 237-4558

Lawn Care For You
Mowing, Trimming, Light Hedging
Call Thomas 637-5839

GOT SOLAR?
Save Money — Help the Planet
For info call Jim Richards
371-9369

Ross McGerty BC24080
349-6359 • 637-9539
From Waialua to Sunset
Make Me the First Call
for Home or Rental Repairs
or Renovations

Holo Holo Mobile Screens
New Screens • New Frames
Screen Repairs • Pet Proof Screens
Sliding Screen Doors • Affordable Rates
Call Today 783-8764

PARADISE PLUMBING INC.
New Const • Repairs • Remodels
808-368-1473 / Lic. 29856

North Shore Pumping
Cesspool & Septic Tank Pumping
638-0900 / 291-5099

EXPERT ELECTRICIAN
Fans, emergency services, etc.
Jim Richards 371-9369

BEACH PLUMBING & ROOTER
Over 30 years experience
Call Larry 637-6400

Seamstress
Rita Bell
497-3666

NS Music Lessons for Kids
Fun, professional, private guitar lessons. West African Drum Troupe
970-596-4845

North Shore Tax Service
40+ experience on Oahu
Jeannine Poling
Enrolled Agent Before IRS
Tax questions?
Call 638-5130
or email kumupali@hawaii.rr.com

LEARN TO SWIM
AT THE
HAWAII SWIM SCHOOL
ON THE NORTH SHORE
Developing swimmers since 1982
Haleiwa Rd. at Smiley Place
637-4863

Bikram Yoga
Stretch, strengthen & stimulate mind & body.
All ages and levels.
Please call for class schedule
637-5700

SHIATSU • LOMI
Aromatherapy
Milica Barjaktarovic
Lic # MAT8348
351-0848
HumanRemodeling.com

N.S. Property Maintenance
Power wash, painting int/ext,
deck repairs, extensions,
fences, gates,
carpentry & remodels.
Maintenance, lawn & yard.
Chris 381-5213/638-0659

Aloha Cleaning Service
Residential/Vacation Rental
Reliable, Experienced,
Affordable.
Mel 306-8925

Lisa Carley Skin Care
637-9400
lisacarley.com
67-292 Goodale Ave. #104
Waialua Shopping Center

Farm seeking responsible
hard working individuals.
Work included but not
limited to harvest, prune,
clean & prep w/ flexible
hours. Leave a message.
Call 707-200-1375

SUBSCRIPTION RATES

If you live outside the North Shore area on Oahu, neighbor islands, or the mainland, you can subscribe to the North Shore News. Our annual subscription rate is \$27 for 25 issues delivered by standard bulk mail (2-3 weeks), or \$48 for 25 issues delivered by first class postage (3-5 days). Call our office for payment information at (808) 637-3138.

HOW TO CONTACT THE NORTH SHORE NEWS

Letters to the Editor, and other items submitted for publication consideration may be sent to us via:

MAIL: P.O. Box 1117, Haleiwa, HI 96712

E-MAIL: NShoreNews@aol.com

FAX: (808) 637-8862

PHONE: (808) 637-3138

**For Advertising Rates,
call
637-3138**

CLASSIFIED ADS

hawaiiweddingminister.com
342-3969
 27 years experience

Offshore Plumbing, LLC
 Commercial • Residential
 • Septic • Plumbing Design
 Mike Duenas, owner
 Lic #C28113
 630-1407
 Fax: 637-7870 • Office: 371-3451
 offshoreplumbing@yahoo.com

BOBBY'S BODIES
 Tuesday evenings at 5:00 p.m.
 • Body Toning
 Friday mornings at 9:00 a.m.
 • Cardio Pump/Fat Burner
 For more info: call Bobby, owner of
 BOBBY'S BODIES at 637-4150

**Windward Shoe Repair
 & Small Engine Clinic**
 Waialua Shopping Center
 Mon.-Fri. • 8am-4pm
 234-8135

Countryman Builders
 Specializing in all phases of
 Construction – New Homes –
 Remodels – Additions.
 Fully Licensed and Insured
 Kevin Countryman
 864-3544 • BC-27449

THE LAWN RANGER
 Lawn Maintenance
 no yard too hard
 no lawn too far gone
 We mow betta
 258-6439 Dan Fatchett

Marianne Abrigo, Properties
 Specializing in -
 North Shore
 Real Estate
 Ask for our list of avail-
 able properties and/or a
 free market analysis.
Marianne M. Abrigo
 "Realtor since 1974"
 Office **637-3511**
 Fax **637-0777**
 Email **mabrigo222@aol.com**

ALBIAR REALTY
 Sales & Property
 Management
*Serving the North Shore
 Since 1999*
Kathi Albiar (PB)
 808-358-4139
 www.albiarrealty.com

HARVEY'S REPAIR, LLC
 24 hrs Towing Service
*Specializing in opening
 locked car doors*
 Call any time 478-0333

GERMAN CAR SERVICE
 Professional-Qualified
 Technician
 Call Gary
 637-6800

ANGELS PLUMBING
 Repairs
 Remodeling
 Renovation
638-7878
 Lic. #C12004



Malia's
NORTH SHORE MASSAGE
 Deep Tissue, Sports
 Lomilomi, Swedish
375-3879
 Lic. MAE 2071

Full . Circle Chiropractic
Greg Hungerford DC
 (808) 780-2601
 66-560 Kam. Hwy. Ste. 5
 Haleiwa, HI 96712
 doctorforgolf@yahoo.com

**Green Waves
 Landscaping & Yard
 Service**
 Tree trim, sprinkler installation and
 repair, yard clean-up and dump.
 Other yard services.
 (808) 371-9617 • (808) 372-8848
 greenwaveslandscaping@
 yahoo.com
 llan Freitas (owner)

NORTH SHORE TV
 To all earth friendly consumers
 Do you have a TV you no longer
 want or need? Call us first before
 you take it to the dump.
North Shore TV @ 637-4111
**No drop offs without prior
 notification.**

**DRUM & PERCUSSION
 LESSONS**
 Drum Set • Congas
 • Timbales • Bongo
 All levels.
 Call 310-795-7486

**Automotive Services
 and Restoration**
 • Auto Body & Paint
 • Detail & Shampoo
 • Upholstery
 Rick Estrada - 216-9419

**HAIR BY
 Linda Adams
 @
 Perfect Wave Beauty
 220.5391**

B.E. CONSTRUCTION
 Dumptruck & Backhoe
 Services
 Equipment, dirt, rock,
 green waste hauling
 in and out
DEMOLITIONS
 BRUCE ESCHE 783-9510

HELP WANTED
BUSSERS/SERVERS
 Pizza Bob's in Haleiwa is looking
 for BUSSERS/SERVERS. Experi-
 ence preferred. Apply in person
 at 66-145 Kam. Hwy.

Part Time Secretary
 Computer Skills Required
 Mon-Thurs 10am-4pm
 Fax Resume to 638-7643

COOKS/KITCHEN HELP
 Pizza Bob's in Haleiwa is looking
 for kitchen personnel. Experi-
 ence preferred, but will consider
 training the right people. Apply
 in person at 66-145 Kam. Hwy.

Farm workerds needed
 P/T. Weed, harvest, plant,
 flex. hrs. Waialua 637-4555

**Retail Sales
 Surf & Sea**
 Hawaii's Ocean Sports Headquarters
 is always looking for hard working,
 energetic people to become a part
 of our sales team. Good pay, bonus,
 benefits. Ocean sports experience
 and/or bilingual a plus. Apply in
 person daily 9am-7pm
 62-595 Kam. Hwy., Haleiwa

FOR RENT
 Rental Wanted, Pupukea Cottage.
 References avail.
 384-9222

**White Sand Beach
 Front Vacation Rentals**
 Studio & 2Bdrm available
 year round swimming
 265-2125 / 247-3637

FOR SALE

**FOR SALE
 NEW FRAMED WINDOWS**
 Still in box...very cheap
 34 @ 81-1/4" x 46-5/8"
 7 @ 68-1/4" x 48-3/8"
 6 @ 60-1/4" x 46-5/8"
 Anodized frame. Gray tint.
 See ad on Craig's List
<http://honolulu.craigslist.org/oah/for/1271716623.html>
<http://honolulu.craigslist.org/oah/mat/1270061937.html>
 Or call: 834-0808

FOR SALE
Blank Canvases
 Pre-Stretched
 Suitable for all types of
 media. Cross bracing on all
 sizes listed below:
 Call 637-6666
 47"x47" \$50
 39"x39" \$40
 36"x36" \$35
 24"x36" \$25
 24"x24" \$20



CLASSIFIED ADS

MISCELLANEOUS

Haleiwa Town Center
Retail space for lease.
636-2222

NS Seventh Day Adventists
Saturdays 9:15-12:15
Info: 638-8209

The North Shore Country Market

Local Community Open Market at
Sunset Beach Elem. School. Saturdays
from 8am to 2pm. Local produce,
fine art work, crafts, food. Vendors wel-
come. Call 237-8248
www.northshorecountrymarket.org

IGREJA EVAN. BRASILEIRA

Domingos 10:00 am
Quartas 7:30 pm
Sextas-Culto de Oraçao 7:30 pm

Voce e o nosso
convidado especial

Behind Hale'iwa Post Office
637-5566
Pastor Luiz • 638-2212

Statewide Hotline for Litter

1-888-592-2522

Callers need to provide:

1. License plate number
2. Make and model of vehicle
3. Date and time and location
4. What was thrown/blown

We are open even though the gate is locked!! Call to get in 638-8161 or 589-6242
Kamaaina Land Nursery
65-1140 Poamoho St.
Waialua

Outreach Services

Persons with Disability
Advocacy Benefits Housing
HCIL 54-113 Kawaipuna St.
Hauula, HI 96717
Ph. 293-9775 or 293-9777

**Next Issue - Feb. 9, 2011
Deadline Date-Jan. 27, 2011**

Read Aloud America

Is seeking NS volunteers to read to children (K-8). We are a non-profit organization that promotes literacy, bonds families, and builds communities of lifetime readers through the fun of reading and being read to. RAP (Read Aloud Program) will be at Waialua Elementary on February 1, 15; March 1, 29; April 12, 26. Volunteers read aloud for 45 minutes. We provide all materials. Reading from 6:20-7:10, join us after for free pizza, dinner and door prizes. Register now at www.readaloudamerica.org. A background check and orientation must be completed before first RAP session.

Hawaii Regional Yoga Competition

Saturday, February 5, 2011
12:00 noon

Waialua Community Center
ASANA Competition . . .
A Yoga Tradition
for centuries
For more info call
637-5700

OFF da ISLAND

Are you leaving Oahu on vacation or business? Do you live on a neighbor island, the mainland or foreign country and subscribe to the North Shore News? Try send us a photo of someone in front of a sign or landmark holding a copy of the NSN. Email your photo along with the person or persons' name, community of residence, telephone number and photo location to: NShoreNews@aol.com. Or, mail to OFF da ISLAND Photo, North Shore News, P.O. Box 1117, Hale'iwa, HI 96712. We cannot return photos so please send us a copy. Photos received become the property of NSN. Preference and priority will be given to emailed photos.

REUNIONS

The NSN is happy to publish your school or family reunion Free of charge.
Email your announcement to NShoreNews@aol.com.

BEACH CLEAN UP

Chun's Reef - 10 a.m.

637-2211

Last Saturday of every month
adoptabeachhawaii.org

Waialua Farmers Co-op Market
Fresh Waialua-grown produce plants & more at the Waialua Sugar Mill

Sat. 8:30 a.m. - 2 p.m.
Wed. 4:30 p.m. - 7 p.m.

I LOVE FREE CHINA TOWN FESTIVAL
PRO BOWL & CHINESE NEW YEARS WEEKEND!
JAN 28th & 29th
FREE CONCERT AND FESTIVAL
888 NUUANU AVE.
CORNER OF NIMITZ HWY
NUUANU & SMITH ST.
DOWNTOWN HONOLULU
IN THE HEART OF CHINATOWN
WWW.ILOVECHINATOWNFESTIVAL.COM

Ho'ala Housing & Resource Center

66-437 Kamehameha Hwy. #101B
Haleiwa, HI 96712
(808) 637-5566

CPR & First Aid Class
March 4, 2011
First Brazilian Christian Church
8:30 a.m. - 4:30 p.m.
\$80.00

Contact Person: Keapoi Namaka'eha
Registration by February 28, 2011.
Call for details. Payment to be made by March 2, 2011
Co-sponsored by: Kaho'oponopono Emergency Shelter Project

Ho'ola Like

"Healers Working Together"
Waikiki Health Center's
North Shore Clinic

Majority of Insurance Plans Accepted
No Insurance - Sliding Fee Available

Open Tuesdays & Thursdays
8:30 a.m. to 3:30 p.m.

Walk-ins are Welcome

Emerson Hall,
Queen Liliuokalani Church
66-090 Kamehameha Hwy.,
Haleiwa

Call 284-5212
for an appointment

Services available at Ho'ola Like

Medical

Family Medical Care • Physical Exams
• Urgent Care
STD & HIV Testing • TB Testing (\$5.00)
Pregnancy Testing, Birth Control and
Family Planning

Hawaiian Healing

Lomilomi, Ho'oponopono &
La'au Lapa'au

Mental Health

Assistance with Stress Management
Interpersonal Issues, Problem Solving,
Depression and Anxiety

Social Services

Assistance with obtaining
identification, medical insurance,
food stamps and housing.

Ho'ala Housing & Resource Center

66-437 Kamehameha Hwy. #101B
Haleiwa, HI 96712
(808) 637-5566

Open to everyone. Call today to
sign up. Limited enrollment.

Bridges
First Brazilian Christian Church

March 2, 2011-May 4, 2011 (ten week training)
9:30 a.m. - 11:30 a.m.

by Lenora Hussain, Facilitator (CSAC)

Purpose: FREE TRAINING

To provide education for mental health workers, interns, social service assistants and consumers on recognizing different mental illnesses and how to deal with it.

Co-sponsored by: Kaho'oponopono
Emergency Shelter Project

Don't throw away that old BIKE!
Donate it to
Yikes Bikes

A non-profit program at Waialua High & Intermediate School

637-8200

M-F • 8 a.m.-3 p.m.



MALAMA MARKET HALEIWA:
OPEN DAILY 7 AM-9 PM
808.637.4520

MALAMA MARKET MAKAILO:
OPEN DAILY 6 AM-10 PM
808.672.9955

Valid Dates:
1/26/11-2/1/11

Mushroom 2/\$4.50
8 oz.



New York Steak \$4.99
Beef, Bone-In, Value Pack PER LB.



Fresh Chicken, Drumsticks, Thighs, Whole Legs or Picnics \$1.49 PER LB.
Value Pack
Foster Farms



Dasani Water \$4.99
24/500 ml.



Tostitos Tortilla Chips 2/\$5
Selected Varieties, 9.75-13 oz.



Tostitos Salsa Dip \$2.99
Selected Varieties, 15 oz.

Best Yet Milk \$4.49
Selected Varieties, Gal.



Tropicana Orange Juice 2/\$7
Selected Varieties, 59 oz.



Banquet Family Entrée 3/\$9
Selected Varieties, 25-32 oz.



Charmin Ultra Soft or Ultra Strong Bath Tissue \$9.99
Selected Varieties, Mega 12 Roll



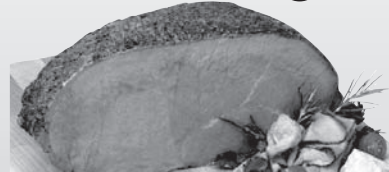
Coca-Cola \$4.79
Selected Varieties, 12/12 oz.



Decorated Single Layer Cake \$6.99 EACH
Yellow or Chocolate, 8"



Boar's Head Roast Beef or Pastrami \$10.99 PER LB.

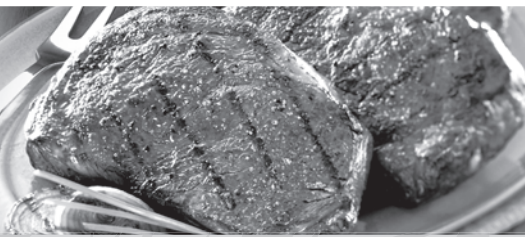


Budweiser, Bud Light, Coors Light or Miller Lite \$15.99
20 Pk. Bottles



THURSDAY

INCLUDES:
7-8 oz. Steak
Rice • Tossed Salad • Drink



Grilled Steak LUNCH \$6.99

Hawaii Beverage Fee
Hawaii Beverage Fee of 1¢ per can or bottle will be added to purchase price at checkout. An Additional Hawaii Deposit fee of 5¢ will be charged for all specially marked beverage containers.

Limit five units (mix/match) per purchase, unless otherwise specified. We reserve the right to limit quantities. No sales to dealers. Prices plus applicable state tax. Hawaii EBT cards welcomed.