



“E Ala Na Moku Kai Liloloa”

Land Surrounding Pu‘u O Mahuka

See pages 12 & 13



NORTH SHORE NEWS January 22, 2014 VOLUME 31, NUMBER 2



“New Experience, Same Spirit”

Last September, a groundbreaking blessing celebration was held to commence construction on Kamehameha Schools’ Hale’iwa Store Lots commercial project along Kamehameha Highway between Kewalo and Mahaulu lanes.

A historical reference to the site’s original name — Waiialua Store Lots — Hale’iwa Store Lots will highlight the historic plantation character of the Hale’iwa Special Design and the role small businesses play in maintaining

a relaxed and friendly gathering place for the community.

To create a new experience with the same Hale’iwa spirit, the \$16.1 million renovation will feature premiere local shops and restaurants while honoring Haleiwa’s rich culture. The 27,000-square-foot project will be anchored by Matsumoto Shave Ice and Whaler’s General Store and fruit stand.

“With support from Colliers International, we set out to attract family-owned businesses who could offer unique, afford-

able, friendly, fun and memorable offerings similar to Matsumoto Shave Ice,” said senior land manager Kalani Fronda.

Other merchants include: Rane Thai Cuisine, Global Creations, T&C Surf, Uncle Bo’s, Fatboy’s, Splash! Hawaii, Island Vintage Coffee, Kahala Sportswear, Mahina, and Malibu Shirts.

Over the course of the project, Kamehameha worked closely with the State Historic Preservation Division, the Historic Hawaii Foundation, and historic conservation architect, Spencer Leineweber, who prepared a Historic District and Building Inventory report in-

Continued on page 3

66-437 Kamehameha Hwy., Suite 210
Hale’iwa, HI 96712

PRE-SORTED
STANDARD
U.S. POSTAGE PAID
Honolulu, Hawaii
Permit No. 1479

**PROUDLY PUBLISHED IN
Hale’iwa, Hawai’i**



OFF da Island in Ilulissat, Greenland

Waialua resident Arleen Ronquillo and her daughter Ocean Maria visited Iceland and Greenland in June 2013. After a 6 hour boat ride through icebergs from Ilulissat, Greenland, the mother-daughter duo posed for a picture at the Arctic at Eqi Glacier in Western Greenland. Arleen brought along the North Shore News to remind her of the good warm times on Oahu's beautiful North Shore. For more information on the OFF da Island campaign turn to page 23.

The Hale'iwa Family Dental Center, Ltd.



presents

"Comfort Dentistry"

including—

- Relaxation Glasses
- Television Glasses
- Caring Staff
- Special Medication to help you relax
- Laser Cavity Detection
- New Patients Welcome!

Your teeth are much too important to neglect.

Call: 637-9652
for your reservation

We're conveniently located behind First Hawaiian Bank
in the heart of Hale'iwa.

We've Moved
66-037 Kam. Hwy., Ste. 3
Haleiwa, next to Growing Keiki



Saccoccio & Lopez
ATTORNEYS AT LAW
Serving Haleiwa since 1984

*Bankruptcy
Personal Injury • Criminal Law
Landlord/Tenant
Traffic Offenses • DUI*

Family Law
*Adoption • Custody • Divorce
Paternity • Guardianship
Deeds, and Wills*

Notary Public

637-7611
VISA/MC Accepted

Paul & Nita



HALE'IWA STORE LOTS

HEART OF THE NORTH SHORE

New experience. Same spirit.

Coming this winter, the newly renovated Hale'iwa Store Lots will feature premiere local shops and restaurants while honoring the rich culture and past of historic Hale'iwa.

- Fatboy's
 - Global Creations
 - Island Vintage Coffee
 - Kahala Sportswear
 - Mahina
- Malibu Shirts
 - Matsumoto Shave Ice
 - Rajanee Thai Cuisine
 - Splash! Hawaii
- T&C Surf
 - Uncle Bo's
 - Whaler's General Store & fruit stand

Stay in the loop!

Contact us at northshore@ksbe.edu to receive email updates.



KAMEHAMEHA SCHOOLS®

OUTDOOR SEATING • PUBLIC RESTROOMS • AMPLE PARKING

"New Experience, Same Spirit" continued from page 1

cluding photographic and written descriptions of the streetscape and individuals buildings.

"The proposed development will be very sensitive to historic preservation concerns and the design intent maintains the scale and essential character of this important commercial area in Hale'iwa," said Leineweber.

To merge old and new in a cohesive, safe, and historically authentic way, Kamehameha Schools contracted general contractor, Allied Builders System, who was tasked with merging the new construction with five historic buildings that would be preserved and rehabilitated. Two buildings which were deemed too old to repair were removed. The former Matsumoto family home is being restored and refurbished as Kamehameha Schools' information center and project management office. During construction, alternative parking is available seven days a week at the Queen Liliu'okalani Church.

To make way for a shaded, outdoor gathering place, an arborist was brought onsite to identify the healthy native trees and plants that should be maintained. Those that could be saved were relocated within the property and the other hardwoods were transported to Kamehameha Schools' Kapalama for reuse. Invasive plants were also removed and groundwork to neutralize the site and surrounding soil was completed.

A railing and 400-foot-wide barricade was recently erected along the highway to ensure pedestrian safety. To deter unwanted graffiti, Kamehameha hired a crew of artists – Carl Pao, John "Prime" Hina, Robin Fifita, Cory Taum and Charlton Kupa'a He'e — to design a mural honoring the history of Hale'iwa through various iconic images. The artists worked with community members over a course of two weeks to complete the project.

"As you approach the main gate, two bridges link the large walls to the gate. The bridges link the three piko (or orbs) at the gate, providing that connection to all three as you cross those bridges," explained Pao. "The piko from the west to the east symbolize the past, present, and future. The gate itself represents the makaha of the fishpond and how it will invite, nurture, and eventually, release people and their shared experiences of Hale'iwa Store Lots. Red – an important color in the design – signifies the blood of the land, people, and culturally the presence of ali'i."

Kamehameha Schools is committed to redeveloping this important property in a manner that supports the community's vision to retain Haleiwa's historic country character while revitalizing a highly visible and valued community asset that in turn supports Kamehameha's educational mission.

Kalani Fronda, Senior Land Asset Manager



Starting 1/1/2014 smoking will be prohibited by law at all City and County of Honolulu

- ✓Beaches ✓Parks ✓Tennis courts ✓Playgrounds ✓Athletic fields ✓Botanical gardens
- ✓Swimming Pools ✓Beach right-of-ways ✓Park roadways ✓Recreation areas



Design & photos by B.E.A.C.H.

Design and Photos by B.E.A.C.H.

SMOKE-FREE O`AHU—a healthy environment for all

All City and County of Honolulu beaches, parks, tennis courts, playgrounds, athletic fields, botanical gardens, swimming pools, recreation areas, park roadways and beach right of ways are now smoke-free. The new smoking ban law came into effect on January 1, 2014.

The smoking ban applies to the whole park. At beaches this includes parking areas, park roadways and the park as well as the beach.

Fines are \$100 for the first offense, \$200 for the second within a year and \$500 for additional violations.

Cigarette butts are the number one littered plastic item on beaches worldwide causing harm to marine life and toddlers who ingest them.

Secondhand smoke has over 50 cancer causing substances and can lead to lung cancer and emphysema.

The new law banning smoking at beaches and parks will result in a healthier, cleaner environment that is safe for young children, all beach goers (who won't be inhaling second-hand smoke) and marine life (that won't be harmed from cigarette butts washing into the ocean at high tide).

For more information about the new law, contact: City and County of Honolulu Department of Parks and Recreation phone: 768 3003 or visit: www.b-e-a-c-h.org/smoke-free-beaches

Aloha,
Dean Otsuki
Co-Founder,

Beach Environmental Awareness Campaign
Hawai'i (B.E.A.C.H.)

Friends of the Library Kahuku (FOLK)

Board Meeting

January 28, 2014 - Tuesday

6:30 p.m. at Kahuku Public School & Library

Anyone interested in attending the meeting is invited. This includes those interested in joining the FOLK group in supporting Kahuku Public & School Library.



WAIMEA VALLEY

— WHERE HAWAII COMES ALIVE —

BOTANICAL GARDENS
Explore Hawaii's finest collection of rare and native plants, flowers, and wildlife

CULTURAL ACTIVITIES
Discover authentic archaeological sites; learn Hawaiian crafts, games, and more

WATERFALL
Visit the heart of the Valley and swim at Waihi Falls

On the North Shore across from Waimea Bay • Open 9 AM - 5 PM Daily
Call: (808) 638-7766 • WAIMEAVALLEY.NET



Council Chair
Ernie Martin
 Serving You in District 2

Action begins at the 2014 Honolulu City Council

As 2013 drew to a close, the Honolulu Fire Department reported that just under 11,000 fireworks permits were purchased by Oahu residents in anticipation of celebrating the New Year. That is 2,000 more permits than was issued in 2012. The significant increase in permits issued was met with an island-wide shortage of fireworks available for purchase.

There were a number of people who purchased one or more fireworks permits at \$25 each and were unable to use them. They were even more upset to learn that no refunds would be issued. Although the permits can be used for Chinese New Years and the Fourth of July this year, this was small consolation for residents who look forward to New Years as the most popular occasion for the use of fireworks. In the interest of fairness to those who were shortchanged on the permits, I introduced Resolution 14-9, urging the Honolulu Fire Department to amend its rules to extend the expiration date for unused fireworks for another calendar year. Permits originally issued for use on December 31, 2013 and January 1, 2014 could be used at the end of this year and the beginning of 2015.

Just as popular as fireworks on New Year's Eve are the plate lunches served up by the many different food trucks in Hawaii. Food trucks now park in metered stalls in urban areas, paying only small change for the space. Once again in the interest of fairness, I introduced Bill 1 to allow the Director of Transportation Services to authorize mobile food unit parking stalls in areas deemed appropriate on city streets and highways through a permitting process. The permits would be issued through a bidding process and would allow lunch trucks exclusive use of the parking stalls between the hours of 10:30 am and 1:30 pm on weekdays.

This bill would actually help promote such small businesses on Oahu, as food trucks would have the benefit of a designated space without having to arrive before daybreak to reserve a parking stall. The cost of the permit would be a fair reflection of the popularity of the parking space. The resolution will be heard first by the Budget Committee at which time we hope to hear from the food vendors themselves to help determine the feasibility of the proposal. For the latest information on the status of this bill, the fireworks resolution and other Council activity, you can check my website at www.ernie-martinatcitycouncil.com.

J.B. TILE & CARPET



JOHN BURTCH

Free estimates
 25 years experience
 (808) 226-1023



Polynesian Treasures

Hawaii's largest selection of Polynesian handicrafts and Hawaiian inspired gifts.

North Shore Marketplace * Haleiwa, Hawaii
 Open daily from 10 am * (808) 637-1288



FUNDRAISING?

Looking for a way to raise funds for your non-profit organization?

Fundraise with our famous Snow Puffies and Sada's Malassadas!



Email us today for more information on how we can customize a fundraising program for your group!



Email us at
pkbsweets@gmail.com

www.pkbsweets.com



Waialua High and Intermediate Dominate the Hawaii State VEX Championship

By Osa Tui

At the Hawaii State VEX Championship sponsored by Hawaiian Electric Company, Waialua High and Intermediate dominated the competition. Three of their robots (High School A and B and Intermediate School B) qualified to attend the 2014 VEX World Championship in Anaheim, California in April. The High School B team qualified by being in the runners-up alliance at the State Championship. The Intermediate School B team qualified by earning a top Robot Skills score (1 minute of unimpeded driver controlled operation). The High School A team qualified by earning the highest Robot Skills score, the highest Programming Skills score (1 minute of unimpeded programming controlled operation), and being the Alliance Captain for the winning alliance. In addition to their top results, the A team was the only one to end their 9 qualification matches with a perfect record. These accomplishments earned them the coveted Excellence Award which celebrates the best overall team at the State Championship.



Photos: Randal Lau



Jalee presenting Elyssa with the President's Volunteer Service Award.

President's Volunteer Service Award

Elyssa Turnbull a 10th grade home school student who resides on the North Shore was recently awarded the President's Volunteer Service Award, which is a national award signed by President Barack Obama to reward volunteer service. Jalee Palompo, founder of the organization Ready for the Real World, presented Elyssa with the official Certificate during a gathering of her peers in Mililani. Elyssa received the Gold Level Award, the highest level for her age group. Congratulations Elyssa.



State Representative
Richard Lee Fale
Serving You in District 47

Aloha,

I hope that you had a restful and enjoyable time during the Christmas holiday season. Now that the holidays are over, we have a New Year with new opportunities to look forward to. This month, I would like to talk to you about my role serving you and the role of my office.

MY ROLE SERVING YOU

As the elected Representative of District 47, my first role is to serve you - the members of our community. I am proud to represent such a great and diverse district. We have much to be thankful for and proud about; the North Shore of Oahu is a place that is world famous for its stunning natural scenery, world-class surfing, pristine beaches and most importantly, its wonderful people!

Visitors come from all over the world to spend a day or two snorkeling, surfing, or just relaxing in our district. Some of us came from other islands or outside of our state in the last few years and decided that this is where we want to live for the rest of our life. Joining our community brings a new mix of ideas, talent and energy to enrich our lives and build upon our strengths.

We have a unique set of challenges because we are different from any other community. Some challenges we have in common are traffic congestion, flooding, erosion, education improvement and other issues that are unique to our rural communities and lifestyles. As the Representative of the 47th district, I understand that it is my role to listen to all concerns and viewpoints. It is my sincere desire that my vote and actions are in the best interest for the community as a whole, in order to improve the future of each individual, family member and neighbor in our district.

THE ROLE OF MY OFFICE

Last year, throughout the regular and special session, our office saw a lot of participation from many community members, like you, vocalizing their support or opposition to key legislative measures being debated at the Capitol. I want to encourage everyone to take advantage of the tools outlined below and be informed and involved in the happenings of your government.

At the Capitol, you are always welcome to visit our office, Room 319. Citizen involvement is the foundation of our representative form of government. The 2014 regular legislative session will run from January 15 to May 1st. To view the legislative calendar, go to: www.capitol.hawaii.gov. Another important resource

is the Public Access Room, located in Room 401 at the State Capitol. There are great materials on their website, www.hawaii.gov/lrb/par.

If you would like to track bills and sign up for electronic notification of when a bill will be discussed in a public hearing, register at www.capitol.hawaii.gov. You will be able to submit testimony electronically and track bills by requesting electronic hearing notifications. If you can't make it to a hearing but you want to have your voice heard, you can still do so by submitting your testimony electronically.

As always, if you have any questions or concerns, please contact me at repfale@capitol.hawaii.gov or call us at 586-6380.

BREAKFAST
7 AM to 10:45 AM DAILY



Haleiwa Town Center - 637-5095

\$2.00 Off with this Coupon

Some Restrictions Apply. See Restaurant for Details.
When Ordering Regular Priced Items. Good Anytime. One Coupon Per Person.
Can Not Be Combined with Other Discounts. Expires 03/31/2014.

PAALAA KAI BAKERY

** Super Saver Special **

10% OFF

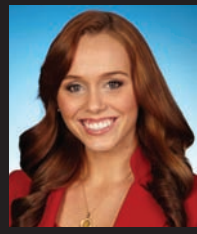
6 Butter Rolls with this coupon



Plus get a **FREE** glazed doughnut **OR** Even better.. Purchase a dozen butter rolls and get a **FREE** chocolate croissant!

Not valid with other offers, promotions, or VIP cards.

Offer valid until Jan. 28, 2014
66-945 Kaulaonua Road, Waiialua, HI 96791 (808) 637-9795



**Representative
Lauren
Matsumoto**
Serving You in District 45

Aloha!

The 2014 Legislative Session has begun! I am excited to have my office staff by my side as we pass legislation that will improve the livelihood of our wonderful state. The Legislature is a fast-paced environment filled with long hours of hearings, conferences, and floor sessions. To keep the Legislature running smoothly, Legislative Session Staff play a vital part in helping me serve your interests and meet important deadlines. I am happy to have a group of talented people working in my office who are interested in participating in the inner workings of State Government.

This session, we have both new and familiar faces in the office. Leading the charge is my Chief of Staff, Cindy Vaillancourt. You can always count on Cindy to answer the phone and assist in any of your inquiries and requests. Also returning back for another session is Daniel Soo. As a Legislative Aide,

Daniel helps me in digesting legislation, reviewing reports, drafting resolutions and committee reports. Daniel is a University of Hawaii Manoa graduate and is working on getting his master's degree in Criminal Justice. A new face in my office is Celeste Gonsalves. Alongside Daniel, Celeste helps me with inquiries concerning the status of legislation, assembling bills and testimony for hearings. Celeste is a published author and recently received her master's degree in Organizational Leadership.

My office is also pleased to host three high school interns this session! Returning from last Session is Carson Turner, along with Mikayla Fisher, both seniors at Mililani High School. I am also pleased to have a new intern, Elyssa Turnbull, a homeschool student from Waialua. All three interns are very motivated to learn more about the Legislative process and work with me to identify issues that students are concerned about.

When you see me with my staff at the Capitol or in the community, feel free to say hello and get acquainted with them. Please don't hesitate to contact me with any questions, concerns, or ideas at (808) 586-9490 or at RepMatsumoto@Capitol.Hawaii.gov. With my staff, the people of Hawaii, and I working together, I am confident that the 2014 Legislative Session will be enjoyable and successful!



Rep. Matsumoto & Staff (left to right): Cindy Vaillancourt, Chief of Staff; Elyssa Turnbull, Waialua homeschool Intern; Rep. Matsumoto; Carson Turner, Mililani High School Intern; Celeste Gonsalves and Daniel Soo, Session legislative Aides. Not pictured: Mikayla Fisher, Mililani High School Intern.

ROBERT M.
PAGAN CONSTRUCTION COMPANY



(808) - 499 - 8617

New construction / Additions / Remodels - Lic # 32866 Bonded / Insured
www.robertpaganbuilders.com

KUA AINA



The Best!

· IN HALEIWA ·
637-6067

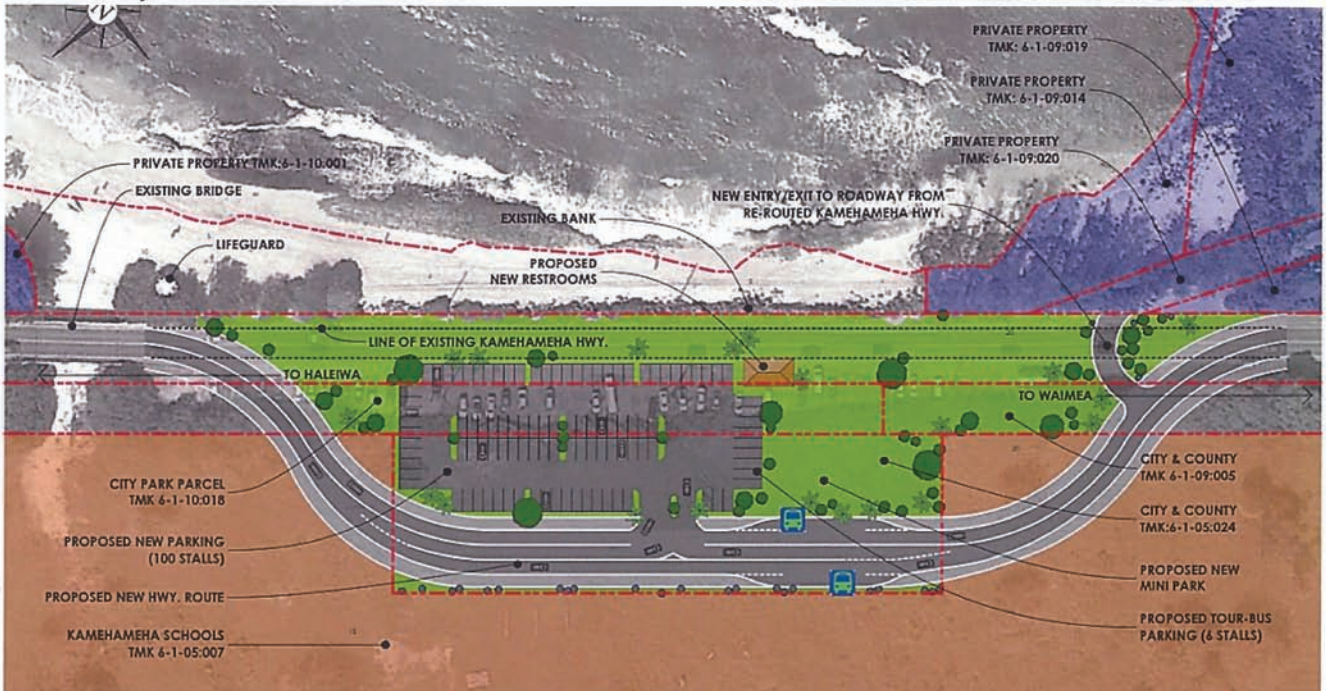
· IN HONOLULU ·
591-9133
AT WARD CENTRE

HALEIWA · TOKYO · HONOLULU · LONDON

LANIAKEA BEACH ACCESS PLAN

1 YEAR, NOT 5 TO 10 YEARS.

YOU CAN HELP MAKE IT HAPPEN.



Concept Plan Rendering

PROPOSED LANIAKEA BEACH ACCESS PLAN

0 10 20 40 70 100



1. Lowest cost. C&C already owns the land that would be used for the diversion. Short length of highway. No new bridge. No cultural artifacts in proposed area.
2. Fastest. Can be completed in one year because of point 1.
3. Community support. Please add by specifying your support for the **Laniakea Beach Access Plan** to:

Governor's office: blake.oshiro@hawaii.gov (Deputy Chief of Staff)

Senator Hee: senhee@capitol.hawaii.gov

Mayor Caldwell: mayor@honolulu.gov

Council Chair Martin: emartin@honolulu.gov

Rep. Fale: repfale@capitol.hawaii.gov

Rep. Matsumoto: repmatsumoto@capitol.hawaii.gov

Facebook: <https://www.facebook.com/LaniakeaBeachPlan> Please Like.

Friends of Laniakea Beach Park



Dear Editor:

My name is Marvin Iseke. My family has owned properties in Hauula for over a hundred years.

I'm happy to see Reynolds Recycling return to Hauula. But people need to know that this is a month-to-month lease. Please call the Mayor at 768-4141 and Ernie Martin 768-5002 to leave the two commercial lots alone for small businesses.

It's a waste of money to replace the Hauula Fire Station with a huge Ewa Beach Fire Station for \$13 Million. The city is not rich - it nickle-and-dimes on many other city needs. The mayor wants us to pay more taxes and fees.


The Mayor's Caesar Fire Palace will not have more workers or increase the service area. This is not the time to give bloated building contracts to make some political donors happy.

We want long-term recycling in Hauula. Many people depend on recycling for income to help pay the bills. Not everybody has a truck to drive far to recycle. Please call them to stop wasting our taxes on a palace station that will cut off recycling and other small businesses in Hauula.

MAHALO.


Send us your "Letter to the Editor" on any topic in the NSN publication, or any community concern. Letters 200 words or less preferred. Include first & last name & contact phone number. NShoreNews@aol.com

10% MILITARY DISCOUNT



Pizza Bob's would like to say Mahalo to the Military by offering a 10% Military Discount to active, reserve and retired members of the military as well as their dependents.

Just show a valid military ID to receive a 10% discount and our thanks for your service to our country.



NORTH SHORE CHAMBER OF COMMERCE
VOLUNTEERS WANTED

GET INVOLVED • STAY CONNECTED • SUPPORT YOUR COMMUNITY

<p>NAME: _____</p> <p>DAYTIME PHONE: _____</p> <p>EVENING PHONE: _____</p> <p>EMAIL: _____</p> <p>DAYS/TIMES AVAILABLE: _____</p> <p>HOURS PER WEEK AVAILABLE: _____</p>	<p>I'M INTERESTED IN VOLUNTEERING FOR: <small>(PLEASE CHECK ANY/ALL THAT APPLY)</small></p> <p><input type="checkbox"/> VISITOR CENTER</p> <p><input type="checkbox"/> ADMINISTRATIVE HELP</p> <p><input type="checkbox"/> PUBLIC RELATIONS</p> <p><input type="checkbox"/> WEB SITE</p> <p><input type="checkbox"/> HISTORICAL TOUR GUIDE</p> <p><input type="checkbox"/> MEMBERSHIP MEETINGS</p> <p><input type="checkbox"/> BUSINESS EXPO</p> <p><input type="checkbox"/> CHRISTMAS PARADE</p> <p><input type="checkbox"/> CHRISTMAS PARTY</p> <p><input type="checkbox"/> OTHER: _____</p>
--	--

TO VOLUNTEER, COMPLETE AND RETURN THIS FORM TO THE
 NORTH SHORE CHAMBER OF COMMERCE • 66-434B KAMEHAMEHA HWY. • HALEIWA, HI 96712
 OR CONTACT US AT 808-637-4558 (PHONE) • INFO@GONORTHSHORE.ORG (EMAIL)

GONORTHSHORE.ORG

DRAFTPLANS HAWAII

-Over 10,000 floor plans & blueprints available for purchase online. Gather ideas for your own design.
 -**Drafting** Service available for new home designs, additions, renovations, decks, fence, rock walls, etc.
 -**Free** property specifications & title search info.



www.draftplans.com

Call for free estimates:
265-0035





Origins Counseling Services, LLC

Genotra D. Brown, MSCP, LMHC
Licensed Therapist

Individual and Family Therapy~Mood/Anxiety~Depression~PTSD
 Couples Counseling~Adolescent Therapy
 Secure e-Therapy/Skype Sessions Available

Phone: 808-664-3874
www.originscounseling.com

66-590 Kam. Hwy, Suite 1C2
Haleiwa, Hi. 96712

WALL to WALL DEALS EVERYTHING is on SALE!!!



Channel Island
Surfboards,
Surftech Stand-Up
Paddleboards,
Clothing from
Billabong, Hurley,
O'neil, Nixon &
Freestyle, Rip Curl
Wetsuits, Oakley,
Dragon & Von Zipper
Sunglasses, Reef &
Vans Footwear, Dive
Gear, Jewlery, Fins,
T-Shirts, Bikins,
Boardbags,
Leashes, Hats, Back
Packs, Racks and
much
MUCH MORE!!!!

Surf N Sea ANNUAL **BLOW OUT SALE**

“This is how you get
there, find the ocean at
Surf N Sea!”

62-595 Kamehameha Hwy.
(On the Beach next to the
Old Haleiwa Rainbow Bridge)

follow us on...

 facebook.com/surf.sea.3



@surfseahaleiwa



@surfseahaleiwa

Land Surrounding Pu'u O Mahuka

In the Spring of 2011, Sunset Ranch was contacted by the land owner of approximately 212 acres of land in Pupukea on the North Shore of Oahu. As it turns out, the land is the largest remaining developable acreage in Pupukea, and surrounds one of Oahu's most important cultural sites: Pu'u O Mahuka. While existing zoning allows for a 77-lot subdivision; the land owner inquired about the possibilities of protecting the land. The great thing about this story? The land owner had visited Sunset Ranch, read about how Sunset Ranch was forever protected and subsequently contracted us inquiring as to whether or not a conservation easement could work for him. After several months of meetings, in addition to quite a bit of work to determine the value and structure of a possible deal, we're happy to say that the land owner has agreed to pursuing a conservation easement on the property. Sunset Ranch is assisting the land owner through his entire process.

In order to understand just how important it is to protect this land, we want to provide you with the following "project value considerations": (i) Property History and Location, (ii) Conservation Plan (land owner's visions), (iii) Project Sponsorship, (iv) Preliminary Valuation and Deal Structure, and (v) Community Support.

(i) Property History and Location

Our knowledge begins in the early part of the 20th century. The land was primarily used for cattle ranching, pineapple farming and a mix of agricultural uses. In recent decades past, less and less of the land was used for active agricultural purposes primarily due to the high costs associated with farming. The economics simply didn't make sense for the previous land owner. As a result, more and more of the land

began to sit fallow and invasive plants slowly started to take over. We are excited to now be working with the current land owner to: (i) perpetually protect the land, and

(ii) reestablish active agricultural and outdoor uses for the benefit of the community and public.

Please understand that the property has panoramic views of the entire northwest side of the



Circa 1930, view of Heiau

island, and is surrounded by some of the largest preserves in Hawaii. These characteristics alone, make this property of significant value, especially under a theoretical development scenario.

Here is a brief summary of the lands surrounding this special piece of property.

Pu'u O Mahuka is adjacent the Property on the west end of the bluff. As stated previously, Pu'u O Mahuka was officially identified as a National Historic Landmark in 1962. While the State of Hawaii, Parks Division, owns the heiau and a very small buffer around it; the land owner is agreeable to providing State Parks additional acreage around the heiau, something the State has been looking for since statehood. The additional buffer has already been identified and will not be included in the conservation easement. This leaves approximately 195 acres for the conservation easement.

North Shore Marine Sanctuary. The property is located just east of the North Shore Marine Sanctuary and has spectacular unobstructed views of the entire area. The Sanctuary is a conservation district (NOAA) that extends from Waimea Bay to Sharks Cove and slightly beyond. It is home to a variety of marine animals, corals, and plants and it is well documented that the sanctuary constitutes one of the world's most important habitats for the endangered North Pacific humpback whale.

Waimea Valley comprises approximately 1875 acres of historic Hawaiian land and is located just south



1970's, view overlooking the Heiau

and southeast of the property. Waimea Valley was acquired in June of 2006 and is currently protected by a conservation easement: forever protected as one of Hawaii's most valuable cultural sites and botanical gardens. Due to the significance of Pu'u O Mahuka in relation to Waimea Valley, the current owner of the valley has provided us with a Letter of Support for this project.

Pupukea-Paumalu. The property lies southwest of the Pupukea-Paumalu site. Pupukea-Paumalu comprises approximately 1129 acres of Hawaiian land purchased by an investment consortium in June of 2007 and is now also permanently protected with a conservation easement. Ownership of the Pupukea-Paumalu land is divided between the State of Hawaii and the City and County of Honolulu. The North Shore Community Land Trust (NSCLT) is currently working with the State to establish a curatorship agreement and help oversee the uses of the land. NSCLT is also extremely supportive of our efforts to protect the property, and has also provided a Letter of Support.

A Charitable Foundation Corp. There are three parcels of land approximating ninety-four acres adjacent to the Property to the south and southeast. These parcels are currently owned by A Charitable Foundation Corp. and are in the process of being preserved and subsequently donated to the State for public use. This land will therefore soon be accessible to the public for trail hikes along the north ridgeline of Waimea Valley. The subject property, if protected, will effectively serve as a buffer zone between the residential community of Pupukea and the many hikers, mountain bikers and hunters that will eventually be accessing this land. A representative of A Charitable Foundation Corp. has also provided us with a Letter of Support for the project.

(ii) Conservation Plan

We will provide more details in a future blog. For now, it is important to know that the land owner is committed to not only permanently protecting the property, but transforming it through the thoughtful implementation of a conservation plan. His long term vision for the property is to provide an interactive visitor destination that will focus on educating the public to productive agricultural methods that include environmental learning stations, outdoor food tasting stations, and possibly a farmers market. His vision also calls for: (i) increasing acreage to dedicated pasture and grazing lands, (ii) a forest restoration project, and (iii) expanding and enhancing existing equine activities. We adamantly believe that these efforts will dramatically transform the property into a site that fosters growth of community interest and involvement in land conservation and sustainability.

(iii) Project Sponsorship

The Hawaiian Islands Land Trust (HILT) has

reviewed this project in detail, and is excited about sponsoring it through the funding process to ensure its perpetual protection. Furthermore, HILT will be responsible for the enforcement of the conservation easement on the property once recorded. This effort will be supported by the establishment of a stewardship fund that will be funded by the land owner. HILT will conduct annual site visits and ensure compliance with conservation easement, as drafted and executed. To learn more about HILT, please check out their web-site.

(iv) Preliminary Valuation and Deal Structure

A preliminary range of value has been delivered by John Child & Company, a well known appraiser in Honolulu. John Child & Company has been involved with numerous conservation easement projects throughout Hawaii and clearly understands that the success of these projects often hinges on the estimate of value, and perhaps most importantly, he is donating 25% of the conservation easement value to the project. We hope to secure the remainder of the conservation easement funding through certain federal programs (50%) and the City and County's Clean Water Natural Lands fund (25%).



(v) Community Support

Given the significance of the project, and in consideration of preliminary meetings with the following, we have received and are in the process of receiving Letters of Support from: (i) Hi'ipaka (owner and operator of Waimea Valley), (ii) the North Shore Community Land Trust, (iii) A Charitable Foundation Corp., (iv) State Parks Division of the State of Hawaii, (v) the Sunset Beach Community Association, (vi) the North Shore Community Association, and (vii) local government officials, community members and surrounding land owners.

We hope after reviewing this article you agree that this is an important piece of land to protect. We would love to hear your thoughts about this project. Please feel free to contact us with any questions or if you'd like to discuss this project in more detail. We can be reached at (808) 638-8333 or admin@sunsetranch-hawaii.com. Mahalo nui loa for your support!

PCC Hosting Polynesian Football Heroes Tribute

FREE Admission to Hear From, Get Autographs of Special Honorees, ex-NFL Stars

The Polynesian Cultural Center (PCC) is hosting a special, free event celebrating the football stars of Polynesia and inviting fans young and old to come meet them on Friday, January 24, starting at 3:30 p.m.

Called the Polynesian Football Heroes Tribute, this one-of-a-kind, community-inspired event will allow attendees to participate in a question-and-answer forum with the special honorees and former NFL players, followed by autograph signings.

Special guests of honor include five of the inaugural inductees into the Polynesian Football Hall of Fame, former college and NFL stars Kurt Gouveia, Olin Kreutz, Kevin Mawae, and Jack Thompson, and Navy Head Coach Ken Niumatalolo.

Also taking part in this fan-friendly celebration are members of the Board of Directors for the Polynesian Football Hall of Fame, all of whom competed in the NFL: Jesse Sapolu, Chairman and Co-Founder; Maa Tanuvasa, Vice Chairman and Co-Founder; Vai Sika-hema; Reno Mahe; and former University of Hawaii Head Coach June Jones.

Alfred Grace, PCC President and CEO, com-

mented, "These men of Polynesia have inspired all of Hawaii with their excellence at the highest levels of football and we are thrilled to bring them together with the community to recognize their feats of glory."

Admission to the Polynesian Football Heroes Tribute is free. However, those wanting to secure a seat are strongly encouraged to reserve tickets in advance by calling the PCC at (808) 293-3333. Tickets will be given to the first 800 guests on a first-come, first-served basis. PCC is providing the first 800 guests with a commemorative poster for autograph signings.

What: Polynesian Football Heroes Tribute

Where: Polynesian Cultural Center, Hale Aloha 55-370 Kamehameha Highway, Laie

When: Friday, January 24, 3:30 p.m.

Admission: FREE. Seats limited to first 800 Guests with Tickets

Reservations: Call (808) 293-3333 to Reserve Tickets

No job too big or small.
Located at the Waiialua Sugar Mill.



**CERTIFIED WELDING
FABRICATION & REPAIRS
OF ALL METALS**

**fab
ab**
808

628.8719

Jerry's Pizza

637-8866



Fresh Pizza • Subs • Pasta & Salad!
Delivery in Haleiwa Town & Waiialua
Open 7 days a week • 7 a.m.-9 p.m.

SALON LA SIRENA
Owner Gina Walker
Haircut, Highlight and Color Specialist
Hairdresser to the Stars from
Malibu, CA. 20 yrs. experience.

Call for a free consultation
Shop 637-6869
Cell 375-3984

★ **BANZAI PRODUCTIONS**

**Video - Media
Need Web Video
Ask About Our
Special Rates**

808-781-2535 ★



BANZAI NORTH SHORE WIRELESS

It was expo time and I headed to Orlando Florida for the Surf Expo, a mighty big show. It was the anniversary for the movie "Endless Summer" and that kicked off the show. It was 50 years ago that film maker Bruce Brown put a trip together with only \$50,000, a 16mm film camera and a water housing that he made himself. Robert August and Mike Hynson chased surf around the world and much of it was filmed on the North Shore. That footage alone is worth a million bucks. Old scenes of big Waimea and town shots of Ala Moana. It was fantastic to see it again.

I also met up with Mimi Munro at the Surf Expo Orlando. She was a longboard champion way back in 1964 at the age of 14. She visited the North Shore way back then and told me a story about when the bay broke. "I was with my hero Joyce Hoffman," she told me. "We had a cabin just steps from the bay. One morning I woke up to this thundering sound and vibrating walls. I screamed to Joyce 'what was that?' and she said that the Bay was breaking. When I went out and looked there were cars lined up right by the beach and everyone was checking it. They finally went out and it was a day to remember." Mimi never rode the bay, she says she is a small wave surfer and she put her surfboard away just 4 years after that. Now she is back in the line up and has a surf camp in Ormond Beach Florida the same home break of World Champion Lisa Anderson. South of there is the home of Kelly Slater, Coco Beach. There was a giant statue of him there in front of Ron Jon Surf Shop, the Disney Land store of surfing.

The Surf Expo boasted over 25,000 attendees and over 2500 companies showing their products. It was a great show, lots of bikinis, lots of towels, lots of surfboards. I checked in with Body Glove since I used to ride for them and found out they have recently included Tatiana Weston-Webb from Kauai on the team. Congrats to her. She is first alternate on the ASP WCT this year and is sure to make an impact in the big leagues. Last year in September North Shore Pro Myles Padaca, former Triple Crown Champion, was hired to be part of the sales team here, congrats to him also.

The Stand Up Surf Board section was a stand out. There was a pool for demonstration and a large selection of boards. Demos included a lot of SUP yoga which is considered the fastest growing exercise in the world. I also ran into Dave and Jeff Hubbard. Both brothers are World Bodyboarding champions. Jeff won in 2012 at Pipeline and Dave won drop knee

in 2013. The company is called Hubbards and can be found at Surf N Sea in Haleiwa. Nice! Volcom was there and had a skate competition so that area was wild! Much calmer apparently than other years. The crew will be here soon for the Volcom Pipeline Pro. That waiting period starts January 26 through February 7th and is a 5 star \$150,000 contest. Good Luck guys!

Have some info? email me at banzaib@hawaii.rr.com Aloha!



Mimi Munro at the Jetty, Daytona Beach, Florida.



Jeff Hubbard (left) & Dave Hubbard (right) with new company Hubbards



SUP Yoga with Analyze the fast growing exercise in the World

HAWAIIAN ISLANDS HUMPBACK WHALE NATIONAL MARINE SANCTUARY

2014 SANCTUARY OCEAN COUNT

SATURDAY, JANUARY 25, FEBRUARY 22, & MARCH 29 ~ 8:00 A.M. TO 12:00 P.M.

VOLUNTEER WITH US!

Come take part in the sanctuary's award winning outreach program that gives volunteers the opportunity to monitor and record humpback whales behaviors during their stay in Hawaiian waters. Each year the Sanctuary Ocean Count is conducted across the islands of Hawai'i, Kaua'i and O'ahu with more than 60 shore sites to choose from! Join us on the last Saturday's of January, February, and March from 8:00am-12:00pm for a chance to observe these majestic creatures off the coasts of Hawai'i! Online registration is available at <http://sanctuaryoceancount.org> where you can select the date(s) and location(s) of your choice!

CHECK OUT THE NEW 2014 T-SHIRT DESIGN!

This year's T-shirt features artist Brett Roeder's "First Breath" design, an artistic depiction of a mother humpback whale assisting her newborn calf to take in its first breaths of life. The pattern within the whales are inspired by traditional Native Hawaiian kapa prints, recognizing Hawai'i as the breeding, calving, and birthing grounds of thousands of humpback whales each year. Our shirts have been printed on soft organic cotton, and are available in a variety of colors. All proceeds benefit the Sanctuary Ocean Count Project. Order yours today at <http://nmsfocean.org>.

FIND OUT MORE!

hawaiihumpbackwhale.noaa.gov

sanctuaryoceancount.org

Island of O'ahu/Hawai'i 808-268-3087

Island of Kaua'i 808-246-2860

WANT TO BE MORE INVOLVED?

The sanctuary is also recruiting a limited number of site leaders. Site leaders must be able to participate in all three counts and must attend training. Please call for more information.



The National Marine Sanctuary Foundation supports the education & outreach efforts of the sanctuary. Donate to the Kohola Campaign to support projects such as the Sanctuary Ocean Count, please visit: <http://www.nmsfocean.org> or <http://hawaiihumpbackwhale.noaa.gov>.

**400 YARD SWIM
12 MILE BIKE
3 MILE RUN**

**BIKEFACTORY
HALEIWA**

RUNNER'S HI
AIEA • HAWAII



**250 PARTICIPANT LIMIT
CHIP TIMED • CUSTOM AWARDS**

TRIATHLON

BEACH CRUISER DIVISION

Saturday, March 1, 2014 • 6:30 am Start • Haleiwa Beach Park, Oahu

COURSE

SWIM: A safe, fast 400 yard course inside Puena Point.
BIKE: 3 loops of Haleiwa town following Kam Hwy., and the by-pass road, 12 miles total. Safe, fast, with two small hills.
RUN: A 3 mile out & back. Approx. 1.4 mile is a BEACH RUN in soft sand near Police Beach. Be prepared. Safe & Fun! [Run course is pending approval and may be altered.]

ENTRY FEE/DEADLINE

INDIVIDUAL: \$90, TEAMS: \$120. Includes t-shirt. Entry fee is non-refundable. Entries must be received by February 17, 2014. No t-shirt guarantee after this date. *On-line registration ends midnight, February 17, 2014.

LATE FEE

ADD \$10 after deadline. Day of race entry: \$100, teams: \$130. We reserve the right to refuse entry to anyone for any reason.

MAIL TO

Haleiwa Triathlon, Attn: Linda Moran, 94-463 Alapine St., Waipahu, HI 96797-4515. Make checks payable to: North Shore Triathlon.

FOR MORE INFORMATION

372-8885 or email: northshoretriathlon@gmail.com
hawaiiswim.com



DIVISIONS/AWARDS

INDIVIDUAL: Elite, all standard 5 year age groups, male & female. Awards to top 3 in each division. BEACH CRUISER (no gears): First male & female overall. RELAY TEAMS: Men, women & mixed. Awards to members of the top 3 teams in each division. (No relay division for beach cruisers)

RACE NUMBER & PACKET PICK UP

TUES., Feb. 25, 3PM-6PM: BIKEFACTORY HONOLULU
WED., Feb. 26, 3PM-6PM: BIKEFACTORY WAIPIO, 94-1388 Moaniani St.
THUR., Feb. 27, 3PM-6PM: RUNNER'S HI
FRI., Feb. 28, 4PM-6PM: RACE SITE
\$5 DONATION for "We the People of Kahuku High School" for day of race packet pick up.

CHECK IN & RACE MARKING

SAT., MAR. 1, 5AM-6:15AM

Register on-line:
active.com

**FREE CUSTOM HAT
for Entries received by January 1!**

online entry at www.Active.com

LAST NAME		FIRST NAME		SEX	AGE	DATE OF BIRTH	T-SHIRT SIZE
STREET ADDRESS		CITY		STATE	ZIP	PHONE	
RELAY TEAM LAST NAME		FIRST NAME		SEX	AGE	DATE OF BIRTH	T-SHIRT SIZE
RELAY TEAM LAST NAME		FIRST NAME		SEX	AGE	DATE OF BIRTH	T-SHIRT SIZE
EMAIL ADDRESS				<input type="checkbox"/> BEACH CRUISER DIVISION <input type="checkbox"/> RELAY (check one)		<input type="checkbox"/> FEMALE <input type="checkbox"/> MALE <input type="checkbox"/> MIXED	

Waiver & Release Statement: I AGREE to comply with the rules, regulations, and event instructions of the Haleiwa Triathlon. I know that competing in a triathlon may be hazardous, I am aware of and assume all risks with participating in this event. In consideration of this application being accepted, I, the undersigned, intending to be legally bound, hereby, for myself, my heirs, executors and administrators, waive and release any and all rights and claims for damages I may have against race officials, volunteers, sponsors, Estate of Bernice Pauahi Bishop, BIKEFACTORY, North Shore Triathlon, the City & County of Honolulu and the State of Hawaii resulting from my involvement in this event. I will additionally permit the free use of my name, photograph and interviews in association with this event. I broadcast, telecast, advertisements, films, videotapes of any reproduction thereof.

INDIVIDUAL ENTRY (by 2/17/14) \$90
TEAM ENTRY (by 2/17/14) \$120
LATE ENTRY (after 2/17/14) ADD \$10
DAY OF RACE ENTRY \$100 / \$130 TEAM

TOTAL ENCLOSED
Make check payable to: North Shore Triathlon

\$

I have read and understand the waiver above. Signature(s) _____ Parent's signature if entrant is under the age of 18 _____ Date _____

First Fully Equipped At-School Medical Center Thrives at Kahuku High

By Jorene Barut

Kahuku High and Intermediate boasts the 50th state's only complete school-based health center. Koolauloa Health Center serves KHIS' 1,879 students exclusively, offers a full-time medical and dental staff, and never rejects students due to an inability to pay.

Equipped with new high-tech equipment, the 900-square-foot facility opened this school year. It took 10 years of planning and pushing, led by the vision of CEO Benjamin Pettus with the support of Lea Albert, Castle-Kahuku Complex Area Superintendent.

Nearly 2,000 school-based health centers already occupy mainland campuses; the first opened in 1967.

"Kahuku's new center is a state-of-the-art model for other complexes to follow," Albert said. "Providing medical and dental services for students on a school campus is not a new idea, but it is the best idea."

On average, 35 students seek help at the center each day, said state School Health Aide Margaret Iloa. Before KHC opened, there were few dentists' offices spanning the 30-mile stretch from Sharks Cove on the North Shore to Kualoa Ranch in Kaneohe. On-campus dental services now include:

- cleanings
 - X-rays
 - fillings
- fluoride treatments.

Prior to KHC, students would often leave school if they felt temporarily sick or were injured. Their absences led to missing valuable class time while parents lost work time as they rearranged their schedules to pick up their children and handle their medical needs. Now students can receive on-site care for:

- serious and ongoing conditions including infections, injuries, asthma, high blood pressure and diabetes
- all vaccines required for school and immunizations like flu shots
 - physical exams for school and sports
 - well child checks
 - vision and hearing screenings.

Because students learn better and perform best when they're in class and healthy, the site offers counseling for:

- managing stress
 - feeling sad
 - sleeping better
- supporting relationships with family, friends and teachers
 - preventing suicide and more.

Another benefit: KHC provides presentations that promote healthy lifestyles; education about self-esteem and dating; and information about physical activity and healthy eating. Other offerings help parents and athletes with sessions like concussion-management training.

"The center can be the medical and dental home for all KHIS students," said Dr. Pat Mason-Dozier, the center's chief of oral health. "Once children reach their teens, their health-care visits typically decrease because they've gained some independence and their lives revolve more

around friends. Their bodies, minds, attitudes about the world and their place in it are changing. Teenagers may have issues or concerns that cause them to choose to suffer in silence rather than face embarrassment or parental attitudes that seem judgmental. The center provides safe teen health care and education."

Full-time medical staffers are Mason-Dozier; Leigh-ton Kaonohi, physician assistant; and health aide Iloa.

Parents and athletic coaches are quickly taking advantage of the new medical resource. Together they created a nutritional plan for pregame meals that follows wellness guidelines. One change: "Team moms started preparing healthier recipes like baked chicken instead of serving athletes fried chicken," said Reggie Torres, Kahuku High head football coach and educational assistant. They switched snacks, too, going from high-sugar and -salt to tasty heart-healthy alternatives.

In addition, "all students have easy, convenient access to medical care," said KHIS Athletic Director Gillian Yamagata.

About 80 percent of Kahuku High's student body plays on one or more of the school's 50 sports teams. "Every year, they must pass a physical exam. They can't try out for anything without that physical," Yamagata said. KHC streamlined the physical-exam process to a matter of days. Previously, it could take up to two weeks to schedule an appointment with a doctor elsewhere on Oahu, arrange transportation, have a parent accompany them and wait for the results.

Besides planned appointments, walk-ins are welcome. Recently, a student experiencing heart palpitations was treated immediately. Asthma attacks, headaches and colds requiring a prescription are commonly treated.

The center features a resting room with two comfortable cots; two medical exam rooms; a dentistry area with two patient chairs; and a section for Iloa to screen arivals. The newest addition is a cutting-edge digital panoramic X-ray unit for dental patients.

KHC serves students from 7:30 a.m. to 4:30 p.m. every day that regular classes are held. Effort is taken to schedule appointments during students' elective classes so they are present in their core classes. Parents must sign consent forms for their children to receive services.

All medical insurances except Kaiser are accepted. Reduced fees are offered for the uninsured and underinsured, based on an ability to pay. Students on Medicaid or a public insurance plan pay no out-of-pocket expenses.

KHC is state and federally funded, in part by a \$500,000 grant from the U.S. Department of Health and Human Services.

"Kids face so many barriers and having this center on campus helps them stay in class and focused," said Oreta Tupola, KHC chief operations officer and a trained social worker. "It's comforting to know that there are medical professionals here to ensure that students receive the help they need because it can take a long time for an ambulance to arrive at our location."

For more information and to schedule an appointment, call 454-7447.

WAIALUA FARMERS' CO-OP MARKET

WAIALUA SUGAR MILL GROUNDS
SATURDAYS
8:30 A.M. – 1:00 P.M

BUY DIRECTLY FROM FARMERS

- KAHUKU FARMS
- FIELDS OF ALOHA
- TWIN BRIDGE FARMS
- DEL TROPICAL FLOWERS
- WAIALUA FRESH PRODUCE
- T & L PALMS AND FLOWERS
- WAIALUA COOPERATIVE FARMERS

- FOOD VENDORS
- STEAKOUT
- NORTH SHORE GOODIES
- SOMETHING SPECIAL BISCUITS & CAKES AND MORE

A MARKET MANAGED BY FARMERS
EDITH: 637-8589

North Shore News



2014 Schedule

PUBLICATION DATE	EDITION	DEADLINE DATE
February 5	#3	January 23
February 19	#4	February 6
March 5	#5	February 20
March 19	#6	March 6
April 2	#7	March 20
April 16	#8	April 3
April 30	#9	April 17
May 14	#10	May 1
May 28	#11	May 15
June 11	#12	May 29
June 25	#13	June 12
July 9	#14	June 26
July 23	#15	July 10
August 6	#16	July 24
August 20	#17	August 7
September 3	#18	August 21
September 17	#19	September 4
October 1	#20	September 18
October 15	#21	October 2
October 29	#22	October 16
November 12	#23	October 30
November 26	#24	November 13
December 10	#25	November 27

Direct-Mailed to Every Home
MOKULEIA • WAIALUA • HALE'IWA • KAHUKU • LAIE
Every Other Wednesday
12,000 copies

"The North Shore's most popular publication" since 1970
(808) 637-3138 • NSShoreNews@aol.com • NSN4Linda@aol.com
www.northshorenews.com

BULLETIN BOARD



10% OFF

Your First 60 Min Full Massage
Includes Neck, Head, Shoulders, and Back

66-437 Kamehameha Hwy.
Suite 101A
Haleiwa, HI 96712
(Next to the Haleiwa Post Office)
(808) 366-1308

Call for an Appointment
Walk-ins Welcome

OPEN 7 DAYS A WEEK

MAE #2890

NORTH SHORE FIX IT

Journeyman Capacity
Concrete, Framing (wood, metal)
Light Electrical, Plumbing,
Drywall-Hang, Tape & Texture
Drywall Patching, Painting, Pressure Wash
25 yrs experience - (808) 222-9381



It's been cold lately!

Perhaps you have an extra blanket or two, used or new to donate to our homeless neighbors. Drop off blankets at the North Shore News office.

A Warm Mahalo
637-3138

ILAN FREITAS

c 808 372-8848
a any part of the island
e greenwaveslandscaping@yahoo.com



yard maintenance
grass planting
sprinkler system installation & repair
landscaping design & renovation
dirt removal
commercial & residential
no jobs are to big or too small



"THE BULLETIN BOARD THAT IS IN EVERYONE'S HOME"

BULLETIN BOARD



Featuring the largest selection of certified organic produce on the North Shore.
 No panic...ours is organic.
 Open 7 days.
 Mon.-Sat. 9am-6pm.
 Sun. 9am-5pm

66-445 Kam. Hwy
 Haleiwa, Hawaii 96712
 Next to the Post Office
 808-637-6729 • 808-637-1922 fax



DR. PORTER TURNBULL
 Chiropractic Orthopedist
 (808) 638-8740
 Appointments available Mon.-Sat.
 (evenings by appointment)

- Industrial accidents & auto injuries
- Sports injuries • Spinal care
- Safe, Effective, and Gentle

N-C PLUMBING & SUPPLY



Cont. Lic. No. C-8913

- RESIDENTIAL & COMMERCIAL SALES & SERVICE
- CONTRACTING & DESIGN • HOME PLUMBING SERVICE
- PLUMBING FIXTURES, HEATERS • FREE ESTIMATES

Nestor P. Calilao (Owner) Bus: 637-8662
 P.O. Box 769 Res: 638-5157
 Waialua, HI 96791 Cellular: 372-8718
 email: nnplumbing@hawaii.rr.com



Joni Shiraishi (R) CRS, GRI, e-PRO
 Certified New Home Specialist <http://www.jonihawaii.com>

67,292 Goodale Avenue #106

Mailing Address:
 P.O. Box 1237, Waialua, HI 96791

office (808) 637.8899 fax (808) 637.5888
 cell (808) 479.8035

www.MOKULANIproperties.com
jonihawaii@hotmail.com



Restaurant & Margarita Bar

- DAILY SPECIALS -

Island Fresh Fish Tacos
 Premium Margaritas

Large Parties Welcome Open Daily 9:30am - 9:30pm
 637-3059 • North Shore Marketplace • Haleiwa
www.CHOLOSMEXICAN.com



COWPER CONSTRUCTION

LIC. #AC 18275

GENERAL ENGINEERING CONTRACTOR

Full Service Sitework
 Contractor

Septic Systems & Tanks
 25 yr. exp.

Michael Cowper 638-7200
cowperhawaii.com

Munden Design & Build

Lic.#BC19632

Design • Plans • Permits • Construction
 Additions & New Residences

808 391-8616

Providing quality work since 1978



License No. C28113

Commercial • Residential
 Septic • Solar • Design

Mike 630-1407
Steve@offshoreplumbinginc.com



Ernie Doak Plumbing, Inc.

Quality without Compromise

NEW CONSTRUCTION • RENOVATION • SOLAR
 Serving Oahu's North Shore for over 20 years

ERNIE DOAK cell 295-7943
 Lic. #CT-22113 office 638-8620
 Lic. #PJ-10630 erniedoakplumbing@yahoo.com



Jay Oku
 Loan Officer

(808) 393-0707
 Office: (949) 281-3076

jay.oku@academymortgage.com
academymortgage.com/jayoku



NMLS #218211 | State Lic: CA #CA-D0C218211, HI #HI218211
 Corp Lic: CA #4170013, HI #HI-3113 | Corp NMLS #3113 | Licensed by the Department
 of Business Oversight under the California Residential Mortgage Lending Act



Waialua High School Varsity Boys Basketball—"Bulldogs"

by K.L. Bajo (alumni, free lance writer)

You just can't stop their progress when they put their "Hot" foot forward! 4 wins/4 losses in the Pre-season.

The Bulldogs have been working hard at practice to become a more cohesive team. With Coach Randall Erice, a Waialua High school teacher and assistant, Coach Fred Lagapa, both Waialua alumni. Together with their winning spirits at heart, running this basketball program with a relentless desire to heave forward this small underdog team with a David and Goliath effort. To steady the focus for the boys, keeping in mind, their education and studies come first. Making the grades first, is a must in order to suit up for play, at each game. Also, a strong commitment to the team practice time. This is to assure mental and physical conditioning. The boys focus hard on individual skill advancement, in this short but fast pace season.


Waialua High School has a much smaller student body in comparison to the rest of the OIA schools. This affects the sports programs. Here at Waialua whoever tries out for the team, makes the team. Usually, just enough to make a complete squad. The varied skill levels are meshed together, as one team. The team has "ten" scheduled games mainly in January.

The coaches & players would like to Thank all the families & fans for their continued SUPPORT and CHEER!!! "GO BULLDOGS!!!"

MAHALO!
From the
North Shore Food Bank
donations of non-perishable
canned
goods are accepted at the
North Shore News Office
637-3138




Coffee!
You can sleep when you're dead!



6:30AM - 8:00PM
NORTH SHORE MARKETPLACE
WWW.ROASTMASTER.COM

OAMC Service at Hale'iwa Beach Park Sunday, January 26, 2014



Lunch for everyone at 12 noon!

Trish Coder Photos

SURFERS, SAINTS & SINNERS ARE WELCOME!

OAMC is a community outreach made possible by many generous supporters and volunteers. If you would like to support or volunteer for the OAMC call 690-0377.

The OAMC is scheduled to meet on the last Sunday of every month (except May & December).

"There will always be poor people in the land. Therefore I command you to be open handed toward your brother and toward the poor and needy in your land." (Deuteronomy 15:11)



CLASSIFIEDS

The North Shore News is published every other Wednesday and mailed free of charge to all North Shore homes and businesses. Extra copies may be obtained at our office.

PRESS RELEASE POLICY: Submit press releases in person or by fax, mail or email to Editor, North Shore News, 66-437 Kam. Hwy., Suite 210, Haleiwa, HI 96712. Please type your releases and keep them shorter than 200 words unless they are of an unusual news interest. Releases should be viable news stories and are published on a **space available basis only**, with priority given to those received in our office first. You may attach photos. We are not responsible for the return of any photos. All materials are submitted at owner's risk. We reserve the right to edit and/or refuse all submissions including advertising.

EDITORIAL POLICY: We welcome articles and letters from our readers. Letters to the Editor are published on a space available basis only and preference is given to shortness of length, and quality of content. We prefer to run not more than one letter, per person, per 6 month period. Letters subject to edit.

Views expressed by our contributing writers and advertisers do not necessarily reflect the view of the management and staff of the North Shore News. All rights reserved. Reproduction in whole or part without permission is prohibited. © 2014.

Editor & Classifieds

Linda Seyler

Typography

Downtown General Store

Contributing Writers

Betty Depolito
Naty Hopewell
Choon James

City Councilman Ernie Martin
State Representative Lauren Matsumoto
State Representative Richard Lee Fale

Photography

Banzai Productions
Trish Coder
Ole Seyler



Please recycle this newspaper.

SERVICES

SHORE ELECTRICAL SERVICE

New Const-Remodels
638-0049 / Lic#C20777

Dog/Cat Nail Trimming

at your home only \$15.00
Call Julie 637-5395

Lawn Care For You

Mowing, Trimming, Light Hedging
Call Thomas 637-5839

PARADISE PLUMBING INC.

New Const • Repairs • Remodels
808-368-1473 / Lic. 29856

Handyman Services

Remodeling, Carpentry, Floors,
Concrete, all parts of Construction
Call Bob "The nicest guy in the
business" Ph. 282-2812

Greekz Plumbing LLC

Complete Service & Repair
Camera inspection/drain cleaning
"Got a leak? Call Steve the Greek"
808-372-1820 Lic#32939

North Shore Pumping

Septic and Cesspool Service
Clifford 638-0900 • 291-5099

EXPERT ELECTRICIAN

Fans, Emergency Services, etc.
Jim Richards 371-9369

Waynebow

Window Washing
Residential • Commercial
New Construction • Free estimates
223-4034

Computer Problems?

I can fix any MAC or PC.
Chris 371-3089

PIANO LESSONS

Guitar, Ukulele, Bass,

Songwriting
637-4635

Paumalu Electric Inc.

C 18074

Residential & Commercial
New Installation & Repairs
Renovations. Remodels
Electric Meter Replacements
Complete Install for Solar PV

Dave Hancock 638-9054

BOW WOW BUNGALOWS

Licensed Boarding Kennel
North Shore, Oahu
Reasonable Rates
Ph. 637-2562

These Dogs Have Fun!

HARVEY'S REPAIR, LLC

24 hrs Towing Service
Specializing in opening
locked car doors
Call any time 478-0333

N.S. Property Maintenance

Complete building & grounds
maintenance, painting int/ext,
demolding & power washing
specialist, carpentry,
fences & decks
Chris 381-5213/638-0659

**Malia's
North Shore Massage**

14 years experience
Women by appointment
Men by referral
(808) 375-3879
maliasnorthshore.massagetherapy.com

**Golden Rule
Lawn Care**

Mowing, weed whacking,
hedge trimming, rake up,
light weeding & haul away.
Call Matt 269-5020

**Next Issue - Feb. 5, 2014
Deadline Date-Jan. 23, 2014**

BIKRAM YOGA

5 a.m. Tues & Thurs!
3 p.m. classes Sat. & Sun.
\$10

Call for class schedule

637-5700

Your Clean Home

Vacation/Residential
Home Cleaning

Affordable • Reliable
• Green Cleaning

For Free Estimate

Call 638-0262 or 782-9941

BOBBY'S BODIES

Tuesday evenings at 5:00 p.m.

• Body Toning

Friday mornings at 9:00 a.m.

• Cardio Pump/Fat Burner

For more info: call Bobby, owner of
BOBBY'S BODIES at 637-4150

Aloha Computer

PC Repair/Virus Removal

Fax/Copy/Internet Access

372-2667 or 237-4558

SHIATSU • LOMI

Aromatherapy
Milica Barjaktarovic
Lic # MAT8348
351-0848

HumanRemodeling.com

DILLON SIGN

& Residential Painting

Haleiwa - 20 yrs exp.

499-9582

**ANGELS
PLUMBING**

Repairs
Remodeling
Renovation

638-7878
Lic. #C12004



HOW TO CONTACT THE NORTH SHORE NEWS

Letters to the Editor, and other items submitted for publication consideration may be sent to us via:

MAIL: 66-437 Kamehameha Hwy., Suite 210, Hale'iwa, HI 96712

E-MAIL: NShoreNews@aol.com

PHONE: (808) 637-3138

Office Hours: Monday-Friday 10 a.m.-3 p.m.

www.northshorenews.com

CLASSIFIED ADS

GERMAN CAR SERVICE
Professional-Qualified
Technician
Call Gary
637-6800

PRODUCE
Now buying assorted fruits and
coconuts. Call 255-8474

Classified Ad Rates
3 lines (min.) \$18.89
4 lines \$25.13
5 lines \$32.45
1" Box Ad \$41.88
(29 characters in each line)
Include your contact information.
**Ads can be dropped off in mail slot,
mailed, or emailed. Pay by check payable to: North Shore News or credit card by phone order.*
We reserve the right to refuse any advertisement with a full refund.
North Shore News • 66-437 Kam. Hwy.,
Suite 210, Haleiwa, HI 96712
• (808) 637-3138 • NShoreNews@aol.com

REUNIONS
The NSN is happy to publish your school or family reunion Free of charge.
Email your announcement to NShoreNews@aol.com.

NORTH SHORE AUTO DETAILING Services
Wash, wax, vacuum, water spot removal, paint sealant, light buffing
We also pressure wash sidewalks driveways and more
For more info
Call Billy (808)371-0854
Prices may change upon inspection of vehicles condition and size
We are mobile we come to you

HELP WANTED
BUSSERS/SERVERS
Pizza Bob's in Haleiwa is looking for **BUSSERS/SERVERS**. Experience preferred. Apply in person at 66-145 Kam. Hwy.

Sat., January 25
Haleiwa Art Walk
Haleiwa Town
5:00 - 9:00pm



Business Services Center
Fast & convenient fax, copy, scan, computer/internet, laminate, etc.
Across from Haleiwa post office.
637-4558 or GoNorthShore.org

COOKS/KITCHEN HELP
Pizza Bob's in Haleiwa is looking for kitchen personnel. Experience preferred, but will consider training the right people. Apply in person at 66-145 Kam. Hwy.

Please Report Stranded Sea Turtles
Call 983-5730 • Mon.-Fri., 7am-4pm
288-5685 pager wkendts, holidays
587-0077 and after hours
Suspected Law Violations
541-2727 or 800-853-1964
NOAA Fisheries DLNR-DOCARE

NS Food Bank
Food bag distribution
Wednesdays, 9am-11am
Waialua Comm. Assoc.
(Haleiwa Gym)

FREE ADS
Garage & Yard Sales,
Lost & Found.
Email ad to:
NShoreNews@aol.com

Retail Sales Surf & Sea
Hawaii's Ocean Sports Headquarters is always looking for hard working, energetic people to become a part of our sales team. Good pay, bonus, benefits. Ocean sports experience and/or bilingual a plus. Apply in person daily 9am-7pm
62-595 Kam. Hwy., Haleiwa

OFF da ISLAND
Are you leaving Oahu on vacation or business? Do you live on a neighbor island, the mainland or foreign country and subscribe to the North Shore News? Try send us a photo of someone in front of a sign or landmark holding a copy of the NSN. Email your photo along with the person or persons' name, community of residence, telephone number and photo location to: NShoreNews@aol.com.

Keep it Country
To report **ILLEGAL VACATION RENTALS**
call 768-8159 or 768-8118
You will remain anonymous
Illegal Vacation Rentals are ruining the North Shore
www.savenorthshoreneighborhoods.com

E Komo Mai! Share Cultural Experience with "E Ala E"
Sat., Jan. 25, 2pm-5pm
Brown Building next to Aoki's
Celebrate unique history & culture of Haleiwa & Waialua.
Sponsored by Kamehameha Schools
This event is Free.

MISCELLANEOUS
New Hope Haleiwa
"Anchored to God's word, led by his spirit" @Haleiwa Elementary School
9:00am Service
621-9363

For Advertising Rates
Call 637-3138
or go to
www.northshorenews.com

PAPOKU'S HAWAIIAN GRILL
840-0223
Next to Haleiwa Post Office



Marianne Abrigo, Properties
Specializing in - North Shore Real Estate
Ask for our list of available properties and/or a free market analysis.
Marianne M. Abrigo
"Realtor since 1974"
Office 637-3511
Fax 637-0777
Email mabrigo222@aol.com

Save the Sea Turtles Int'l and Adopt a Beach and Highway Hawaii
BEACH CLEAN UP
Last Saturday of every month
10 a.m. • 61-529 Kamehameha Hwy., Haleiwa, HI 96712
For more information 808-637-2211
Check out our website at: <http://adoptabeachhawaii.com>

Voice of God Ministries
Jesus Loves You
If you need Prayer
Call 808-373-0294

Queen's Open Market
Sundays 1:00 to 5:00pm
Liliuokalani Church

Statewide Hotline for Litter
1-888-592-2522
Callers need to provide:
1. License plate number
2. Make and model of vehicle
3. Date and time and location
4. What was thrown/blown

Advocate for Animals
We need you to be a voice for the animals. Community advocates are needed to help advance policies for a more animal friendly Hawaii. Contact Mary at 356-2217 or msteiner@hawaiianhumane.org.

REWARD!!
\$500 reward for the return or info on rings missing from Sunset Beach home in Nov.
1) Sz9, gold Hawn ring w/ 1/2 carat diamond
2) Sz9, white gold, 1/4" wide, 5 diamonds inlaid.
Carma 927-1522 or email carma@hawaii.rr.com



Blood Bank of Hawaii
Be a sweetheart, donate blood. You'll give them the sweetest gift of all - life.
Tues., Feb 4, 9am-4:30p
BYU Hawaii, Ballroom
Wed., Feb 5, 7:30am-1:30pm
Waialua Int, & High School

Malama Market Haleiwa:
Open Daily: 7 a.m.–9 p.m.
(808) 637-4520

Malama Market Makakilo:
Open Daily: 6 a.m.–10 p.m.
(808) 672-9955



Valid Dates:
1/22/14–1/28/14

Deals of the Week!

Fuji Apple

\$1.19
LB.



choice *Certified Angus Beef*[®]
Boneless Chuck Steak
Value Pack



\$4.99
LB.

Maruchan Instant Lunch
Selected Varieties,
12/2.25 oz.,
Case Sale Only!

\$5.99



Gatorade
Selected Varieties,
32 oz.

5/\$5



Spam Luncheon Meat
Selected Varieties,
12 oz.

\$2.59



Tostitos Tortilla Chips or Salsa Dips
Selected Varieties,
9.5–15.5 oz.

\$2.89



Dreyer's Ice Cream
Selected Varieties,
48 oz.

2/\$7.50



Hawaiian Sun Fruit Nectars or Drinks
Selected Varieties,
6/11.5 oz.

\$1.99



Coffee Cake
Selected Varieties,
8x8

\$4.79
EA.



16 Piece Country Style Fried Chicken
4 Breasts, 4 Wings,
4 Thighs, and 4 Drums

\$15.99
EA.

16 PCS.



Heineken, Corona or Redd's Apple Ale
12 Pk. Bottles or Cans

\$13.99

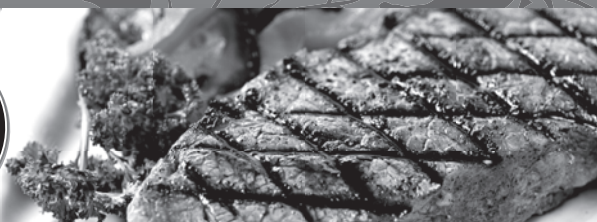


Thursday

Grilled Steak Lunch

7–8 oz. Steak, Rice, Tossed Salad, Drink

\$7.99



Hawaii Beverage Fee of 1.5¢ per can or bottle will be added to purchase price at checkout. An additional Hawaii Deposit Fee of 5¢ will be charged for all specially marked beverage containers.

Limit five units (mix/match) per purchase, unless otherwise specified. We reserve the right to limit quantities. No sales to dealers. Prices plus applicable state tax. Hawaii EBT cards welcomed.