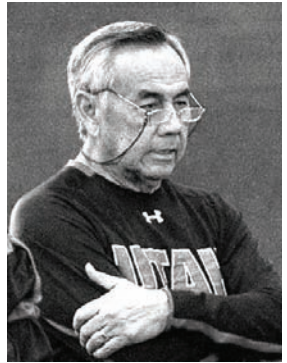




"E Ala Na Moku Kai Liloloa"

Former Waialua High football coach is new UH head coach

Norm Chow has been selected as the New University of Hawaii heads football Coach with a base salary of \$550,000.



NORTH SHORE NEWS January 11, 2012 VOLUME 29, NUMBER 1



Governor Neil Abercrombie, Glenn Lee, Superintendent Kathryn Matayoshi, Complex Area Superintendent Patricia Park, and Waialua High and Intermediate Principal Randiann Porras-Tang

Waialua High and Intermediate teacher Glenn Lee wins \$25,000 Milken Award

Governor Neil Abercrombie, Superintendent Kathryn Matayoshi, Complex Area Superintendent Patricia Park, and Waialua High and Intermediate School Principal Randiann Porras-Tang made

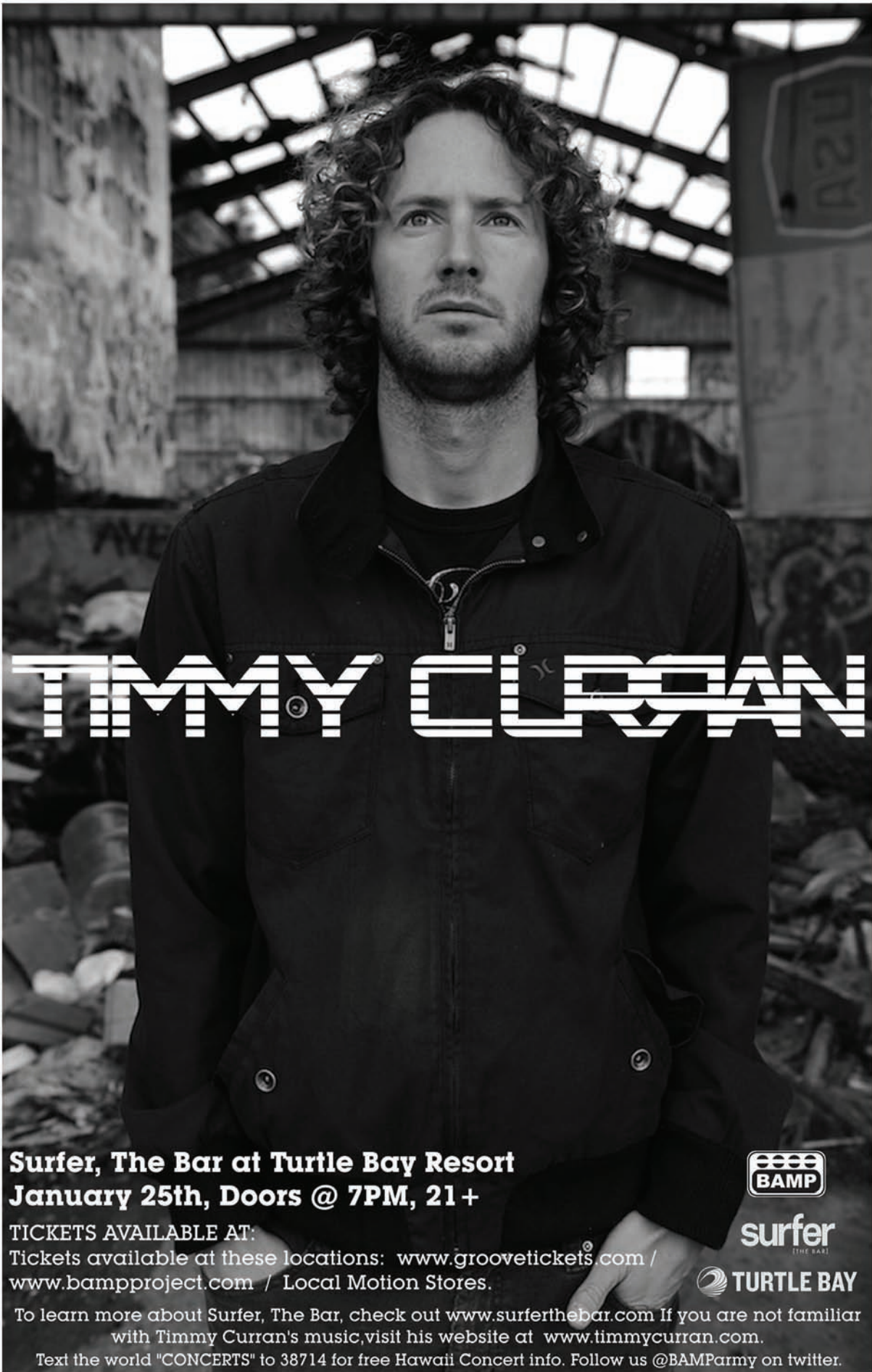
this year's announcement of Hawaii's Milken Family Foundation National Educator Award. Glenn Lee was introduced as Hawaii's 2011 Milken Award winner at an assembly attended by more than

500 students at Waialua High and Intermediate School in Waialua. The 17-year veteran of Hawaii's public school system was also presented a \$25,000 cash award from the Milken Family Foundation.

An accomplished electric engineer, Glenn Lee embarked on a career change to fulfill a desire to become a math and science teacher who could offer students real-world applications of what they

PRE-SORTED
STANDARD
U.S. POSTAGE PAID
Honolulu, Hawaii
Permit No. 1479

66-437 Kamehameha Hwy., Suite 210
Haleiwa, HI 96712



**Surfer, The Bar at Turtle Bay Resort
January 25th, Doors @ 7PM, 21+**



TICKETS AVAILABLE AT:

Tickets available at these locations: www.groovetickets.com / www.bampproject.com / Local Motion Stores.



To learn more about Surfer, The Bar, check out www.surferthebar.com If you are not familiar with Timmy Curran's music, visit his website at www.timmycurran.com.

Text the word "CONCERTS" to 38714 for free Hawaii Concert info. Follow us @BAMParmy on twitter.

NOW OPEN.

First there was Surfer the magazine. Now there's Surfer the bar.
A stage for Hawaiian musicianship. A soapbox for talkstory.
A screening room for big wave film and photography.
A venue for special events. A podium for awards and accolades.

IT'S MORE THAN A BAR. IT'S AN ORIGINAL.

UPCOMING EVENTS

- JAN 12 **Tubed Thursdays / DJ Nights** ftg. DJ Baumer & DJ Twilight
Doors Open at 8pm/Party Rages until 1am. \$10 Cover after 10pm.
- JAN 15 **Filmmaker Showcase Sundays** / "Panilolo O Hawaii - Cowboys of the Far West"
With Honolulu Director Edgy Lee. Presentation at 8pm.
- JAN 16 **Hawaiian Music Mondays** / Wayne Tajeda & Kyle Maiava at 8pm
- JAN 17 **Kanikapila Tuesdays** / Musicians are invited to take the stage at 8pm
- JAN 18 **Talk Story Series** ftg. NOAA Surf Forecaster Pat Caldwell
Doors open at 6pm/Presentation begins at 8pm. \$5 Donation.
- JAN 19 **Tubed Thursdays / DJ Nights** ftg. DJ Baumer & DJ Twilight
Doors Open at 8pm/Party Rages until 1am. \$10 Cover after 10pm.
- JAN 22 **Filmmaker Showcase Sundays** / "The First Glide" With Director Mike Waltze.
Doors open at 6pm/Presentation begins at 8pm.

Visit SurferTheBar.com for event updates.

surfer
[THE BAR]

The Hale'iwa Family Dental Center, Ltd.



presents

"Comfort Dentistry" including—

- Relaxation Glasses
- Television Glasses
- Caring Staff
- Special Medication to help you relax
- Laser Cavity Detection
- New Patients Welcome!

Your teeth are much too important to neglect.

Call: 637-9652
for your reservation

We're conveniently located behind First Hawaiian Bank
in the heart of Hale'iwa.

Editor's Choice

Radical "Scrabble"

(Author Unknown)

BEST IN PRAYER:

When you rearrange the letters:
PRESBYTERIAN

ASTRONOMER:

When you rearrange the letters:
MOON STARER

DESPERATION:

When you rearrange the letters:
A ROPE ENDS IT

THE EYES:

When you rearrange the letters:
THEY SEE

GEORGE BUSH:

When you rearrange the letters:
HE BUGS GORE

THE MORSE CODE :

When you rearrange the letters:
HERE COME DOTS

DORMITORY:

When you rearrange the letters:
DIRTY ROOM

SLOT MACHINES:

When you rearrange the letters:
CASH LOST IN ME

ANIMOSITY:

When you rearrange the letters:
IS NO AMITY

ELECTION RESULTS :

When you rearrange the letters:
LIES - LET'S RECOUNT

SNOOZE ALARMS :

When you rearrange the letters:
ALAS ! NO MORE Z'S

A DECIMAL POINT :

When you rearrange the letters:
I'M A DOT IN PLACE

THE EARTHQUAKES:

When you rearrange the letters:
THAT QUEER SHAKE

ELEVEN PLUS TWO:

When you rearrange the letters:
TWELVE PLUS ONE

AND FOR THE GRAND FINALE:

MOTHER-IN-LAW:

When you rearrange the letters:
WOMAN HITLER

GET \$50 CASH NOW!

Just come to Liberty Tax. Let us do your taxes and we'll hand you \$50 cash on the spot.

LIBERTY TAX HAWAII
Akamai Tax Kokua
1-866-871-1040

With paid tax preparation. Valid at participating locations. Cannot be combined with other offers or used toward past services. One coupon per return. Valid 1/12 - 2/15.
www.libertytax.com | 866-871-1040

BREAKFAST

7 AM to 11 AM DAILY



Haleiwa Shopping Plaza - 637-5095

PLUS \$2.00 Off with this Coupon

Some Restrictions Apply. See Restaurant for Details.
When Ordering Regular Priced Items. Good Anytime. One Coupon Per Person.
Can Not Be Combined with Other Discounts. Expires 02/29/2012.

SUSCRIBE

to the

North Shore News

3 choices...

SNAIL MAIL

\$35
 25 issues
 1 year
 Standard Bulk Mail
 2-3 week delivery time

FIRST CLASS

\$55
 25 issues
 1 year
 Inside Envelope
 3-5 day delivery time

EMAIL

\$25 - limited introductory price
 25 issues
 1 year
 PDF file cover to cover
 Emailed 3 days prior to
 publication date

10,000 North Shore residents receive the NSN free every other Wednesday by direct mail. All others on Oahu, Neighbor Islands, Mainland US & Canada must SUSCRIBE using either of the choices above. Price includes tax & handling. You may subscribe by using check, money order, or credit card (VISA, MC, AMX). Mail payment along with mailing/email address to: North Shore News, PO Box 117, Haleiwa, HI 96712. Payment by credit card include number & expiration date. (808) 637-3138 NShoreNews@aol.com



BAR & GRINDS
 HALEIWA HAWAII

Now Open in Historic Haleiwa
 11am to 9pm • Daily Specials • Local Fresh
 Nothing Frozen • Try us Once, Guarantee you'll be back!
 BYOB • No Corkage Fee • Liquor License Pending
 With all of our Aloha to Kainoa's • We hope to see you at B's
 Next to Longs Drugs and Opal Thai Food



The Ohana at PKB
 would like to wish
 you a very.....



Come in and ask for
 your FREE January
 PKB 5-0 stamp card
 to save big in 2012!



Hawaii's largest selection of
 Polynesian handicrafts and Hawaiian inspired gifts.

North Shore Marketplace • Haleiwa, Hawaii
 Open daily from 10 a.m. • 808-637-1288

Located in Waialua Next to Paalaa Kai Mini-Mart
 66-945 Kaukonahua Road, Waialua, HI 96791 (808) 637-9795

Olakino Maika'i

(Good Health)

by Naty Camit Hopewell

Tinea

Tinea is the medical term referring to skin fungal infections. One of our readers requested an article on ringworm, a type of tinea. It's not the most attractive topic to discuss for the New Year, but here we go.

Fungal skin infections generally are scaly, itchy rashes that affect different parts of the body. Most fungi like warm, dark, moist places. Consequently, these infections can affect the feet (athlete's foot), the crotch (jock itch) and anywhere that is skin-to-skin, such as armpits and pendulous breasts (under the breasts). The term "ringworm" probably originated because fungal infections on the drier parts of the body can manifest in a circular rash that is raised and scaly on the outside of the ring and the center is normal skin. Of course, it's beyond me how "worm" got attached to the "ring."

There is another type of fungal infection that occurs in more open areas such as the upper back or chest and upper arms. The medical name is tinea versicolor; the Hawaiian name is Kane; a more common name is "Haole Rot." The rash is oval, lighter than the person's normal skin color, not scaly, and not raised. The overall look is "spotty." Unlike the other fungal infections, this is not itchy. It's also more visible because of the location.

Treatment differs for these two fungal infections. For ringworm, an anti-fungal cream applied twice daily usually works. Haole Rot can be treated with selsun (usually used to treat dandruff) applied on the affected skin every night (washed off in the morning) for a week or an oral anti-fungal medication. With both types of infections, clearing it up doesn't mean it won't recur. For some people it recurs periodically and needs to be re-treated.

Turtle Bay Resort's SEIS Community Update

Provided by Replay Resorts on behalf of Turtle Bay Resort

This article is the fifth in a series of updates to the North Shore News community about the ongoing progress of Turtle Bay Resort's draft Supplemental Environmental Impact Statement (SEIS) Preparation Notice and the Revised Plan (Revised Plan). Turtle Bay Resort (TBR) has the unique opportunity to honor and respect these lands and community by incorporating traditional Hawaiian cultural values into its environmental review process, planning and implementation of the Revised Plan. This series will focus on the critical cultural components of both the SEIS and Revised Plan. For more information and the latest news about Turtle Bay Resort's SEIS, please log onto www.turtlebayseis.com.

In previous updates to the North Shore community, we discussed the commission of a Supplemental Archaeological Inventory Statement, the revision of the Master Plan of Turtle Bay Resort to respect the history and culture of the Turtle Bay lands, our plans in improving the unique North Shore Bays, and our efforts in preserving and maintaining access to Turtle Bay Resort's rugged coastline. All of our previous updates are available at www.turtlebayseis.com.

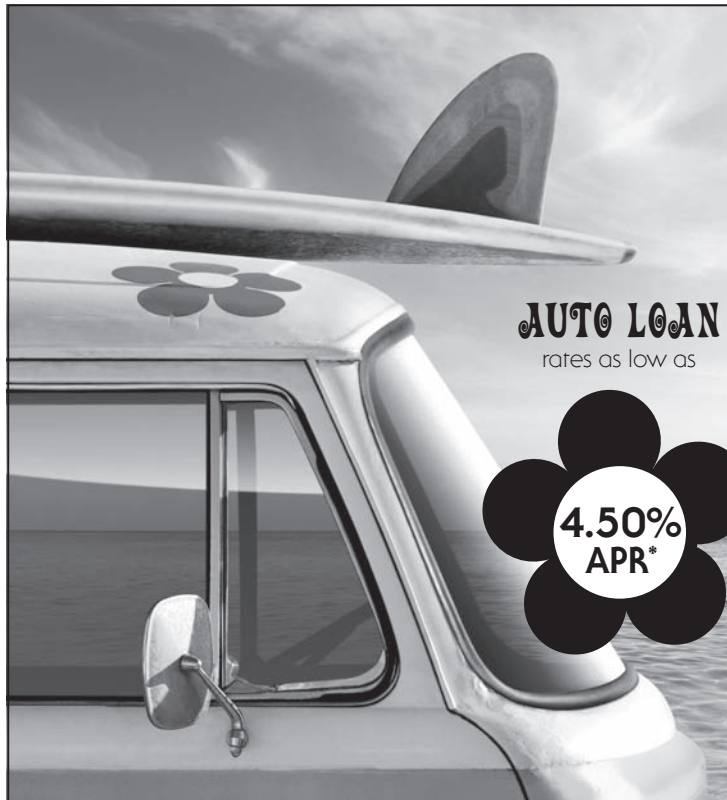
This update features our proposed hotel developments within the Hanaka'oe Ahupua'a. The Hanaka'oe Ahupua'a is proposed as the physical and economic center of the Turtle Bay Lands. Currently, existing resort facilities are concentrated in this area around Kuilima Point. Our Proposed Action will place all future hotel development in the Hanaka'oe Ahupua'a as well as within walking distance of existing facilities.

Our proposal has two hotel sites in mind. The first site, referenced as H-1, will be west of the existing beach cottages and is bisected by a central Gathering Place (you may log onto www.turtlebayseis.com to view the Proposed Action maps of designated development sites). Although many possibilities exist with respect to the ultimate design, we are limiting options to a maximum of 375 units and a maximum height of 90 feet. The second site, H-2, which will be the development area east of the Ocean Villas (primary condominium units) and will include a 250-unit property with a maximum height of 70 feet. Both sites are intended to offer full service hotels. Depending on the eventual ownership structure (condominium-hotel, traditional hotel or timeshare) there is provision for up to 375 additional keys representing lock-off units – where one unit can have two keys.

The Gathering Place is intended to be a vibrant activity and hospitality center welcoming local communities to enjoy Turtle Bay's spectacular setting together with its visitors. Set on approximately ten acres, we anticipate open space to represent about 90% of the total area of the Gathering Place. With every aspect of our planning, we endeavor to preserve, enrich, and perpetuate the native Hawaiian culture as much as possible. Additionally, we strive to extend opportunities to the community for community fellowship and cultural practice. This will be central to our future programming of the Gathering Place.

REWARD FOR MISSING TURTLE:

Someone may have kidnapped one of four small red-eared slider turtles from the pond outside of the Turtle Bay Resort golf shop. The small two-pound fresh water turtle was taken on the evening of December 29, 2011. If you have information or would like to return the turtle "no questions asked" please call golf pro Matt at 293-8574.



AUTO LOAN
rates as low as

**4.50%
APR***

**PEACE. LOVE.
GROOVY RATES.**

Get on board with Waialua Federal Credit Union's groovy rates on auto loans! Whether buying new or used, we'll help you dive headfirst into a great deal with auto loans featuring:

- Rates as low as 4.50% APR*
- Terms for up to six years (seven if the financed amount is over \$25,000)
- Financing for up to 100% of the dealer invoice

Apply today to ride the wave of a great auto loan! Call or stop by to speak with one of our friendly loan representatives.

WAIALUA FEDERAL CREDIT UNION

(808) 637-6737 • (808) 637-5980 • www.waialuafcu.com

*APR=Annual Percentage Rate.



The entire Cholo's staff would like to thank you for your continued support and we wish you a happy, healthy and prosperous New Year!



www.CHOLOSMEXICAN.com



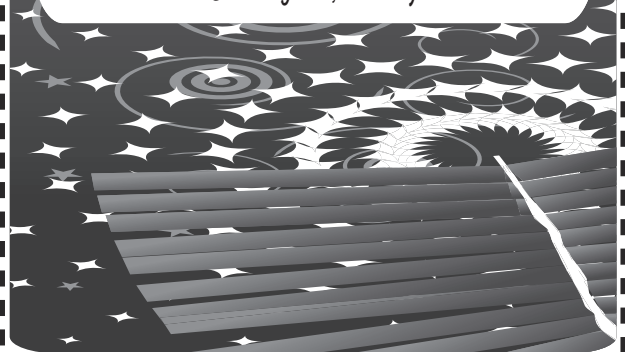
**CELEBRATE THE
NEW YEAR WITH PKB!**

Turnover a new leaf in 2012!



**Clip this coupon for
20% OFF TURNOVERS**

(Requires honest-to-goodness promise on new-leaf turnover for 2012. Not valid with other offers or discounts. Offer expires January 18, 2012)



Waialua High continued from page 1

were learning.

Lee's pioneering efforts in building a robotics movement that ignited a passion for Science, Technology, Engineering and Math throughout the state is a testament to his remarkable success and selfless dedication to students, educators and communities.

Committed to rigor and relevance, Lee arrived at Waialua High and Intermediate determined to learn everything he could about robotics. He fostered partnerships, wrote grants, and in 1999 launched the state's first program in a small rural community with limited resources.

Today, the Waialua High Robotics Program serves as a model for engaging students in STEM subjects and teaching the skills necessary for graduates to succeed in college and careers. Students display a high level of responsibility by designing their own learning plan objectives, outcomes and assessments, truly living the program's motto: "It's not all about winning, it's about teamwork, commitment and responsibility."

In April 2011, Waialua High School's 'The Hawaiian Kids' brought home the Chairman's Award, the top prize of the FIRST Robotics World Championship in St. Louis – capping an impressive season in which Waialua students clinched scores of national and international robotics titles.

As Complex Area Superintendent Patricia Park remarked, "(Lee's) most compelling factor is his razor focus on developing students with a strong degree of moral and ethical values, which will sustain and support their positive values as a strong foundation throughout their lives."

As a math teacher, Lee worked with the math department to revise course offerings and develop high expectations for all students. He partnered

with the science department to build a continuum for the robotics program, including Lego League in the 7th grade elective wheel, VEX for middle and high school, and robotics at the high school level.

Over the past four years, all of Waialua High and Intermediate's graduating valedictorians have been in the robotics program. Every student in Lee's program has entered college, and many return each year to coach undergraduates. Lee shares his expertise with schools statewide as an active member of the Hawaii State Robotics Planning Committee, and the Hawaii State Robotics Alliance.

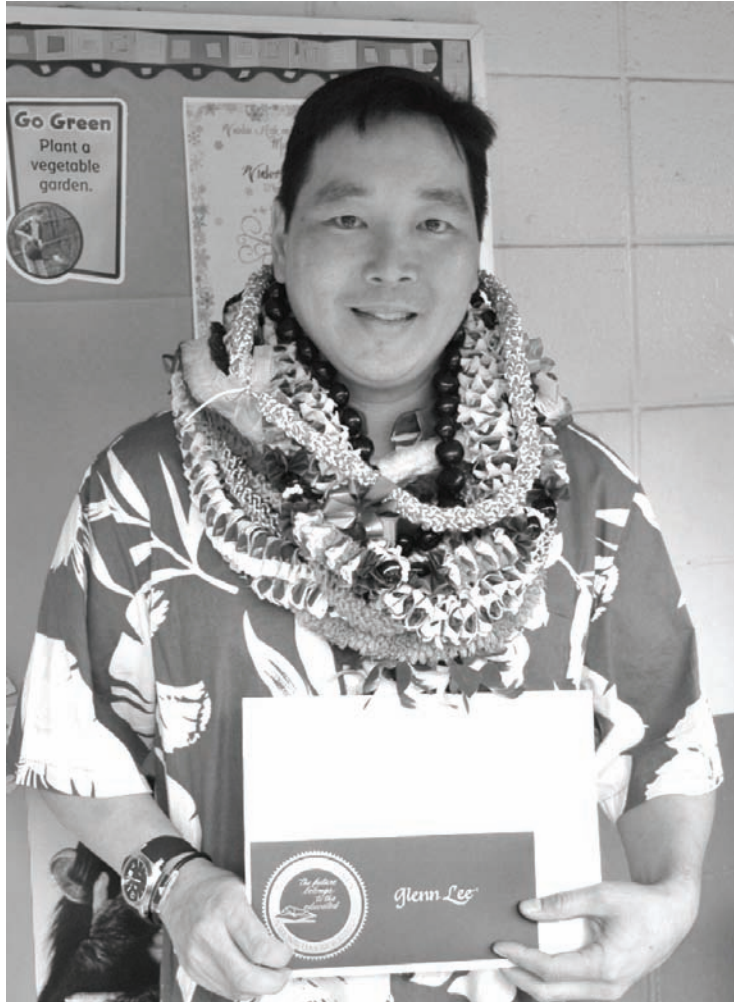
In addition to his robotics advocacy, Lee played a key role as a teacher leader, mentor, and classroom teacher in a restructuring school that has met Adequate Yearly Progress under No Child Left Behind for the last two years. Since the 2007 school year, 87 percent of Lee's students have met proficiency in reading and math on the Hawaii State Assessment, and 71 percent have maintained a 3.0 GPA or higher.

"Students who work with Mr. Lee explain that he holds them to the highest of expectations," says Randiann Porrastang, principal of Waialua High and Intermediate. "He prepares them for life in the real world. He never accepts excuses

and is incredibly persistent in challenging them to achieve excellence."

Lee has taught at Waialua High and Intermediate School for 17 years. He received a bachelor's of science degree in electrical engineering from the University of Hawaii at Manoa. He also holds a master's in business administration, and a post-baccalaureate certification in secondary education in mathematics from UH Manoa.

Hawaii has been part of the Milken Educator Awards since 1990-91. Including this 22nd year, 70 Hawaii educators have received awards totaling \$1,750,000.



Milken Award winner Glenn Lee



BRIDAL EXPO HAWAII

January 20-22, 2012

Blaisdell Exhibition Hall

Show Hours:

Friday: 5:30 pm to 10 pm

Saturday: 10:30 am to 4 pm

Sunday: 10:30 am to 4 pm

Tickets: \$9.00

\$75,000 in prizes given away at the show!

Sponsored by:

Celebrity Tuxedos • Princess Brides • Liquid Light Images • Off Menu Catering
 Spinning W.E.B. Florist • Wedding Planner 808 • IMF Visions
 Vacations Hawaii • Big City Diner • Grand Finale Productions
 Watanabe Florals • Pacific Diamond & Swiss Watch Exchange

BUCKLES PRODUCTIONS™

For more information go to BridesClub.com





A Message From State Representative Gil Riviere

Happy New Year.

The twenty-seventh legislature reconvenes on January 18, 2012 to consider pending and new legislation until closing day on May 3rd. There will be no special ceremonies or entertainment this year, but you are always welcome to stop by Capitol Room 319 to visit and to share your concerns and suggestions.

We are fortunate to have two seasoned staff members joining us this session. Returning for 2012 is Ann Otterman, who will serve our office and community as a Legislative Aide. Ann will be analyzing and tracking legislation that may impact our community and she will assist me in the Committees on Agriculture; Water, Land & Ocean Resources; Energy & Environmental Protection; and Finance.

New to our team is Jan Salcedo, who brings more than a decade of legislative experience and knowledge to our office. Jan, also a Legislative Aide, provides a keen insight into the history of the issues that arise and she brings remarkable passion to constituent relations.

Trina Ishii continues her outstanding service to our district as Office Manager.

Traffic aggravation hit a new level over the holi-

day break as bumper to bumper traffic backed up from Laniakea to the middle of the Haleiwa Bypass every day from late morning to late afternoon. Businesses are losing thousands of dollars as they pay employees to sit in traffic, residents cannot move about, and emergency services cannot quickly get to where they need to be. In one case, fire fighters arrived at Sunset Beach from Haleiwa faster by jet ski than by fire truck!

After numerous delays, the Laniakea project manager for the Department of Transportation (DOT) assured us that the first meeting for the Traffic Alternatives Advisory Group would be scheduled in the third or fourth week of January. He also assured us that letters would be promptly mailed to committee volunteers with the meeting announcement. At deadline for this article, we have not received any such notice.

We will send out an email notification of the meeting date, time and location as soon as we have confirmation that the meeting will actually occur. The DOT has previously missed several other deadlines for the public meeting, but say they study should still be completed by the end of 2012. If you are not yet on our email list, you can sign up through our website, GilRiviere.Info.

The traffic situation at Laniakea has been worsening for years and it is unacceptable that the first step to determining the possible solutions has been kicked down the road this long. We will continue to pursue action from the DOT and post news on our website and in future North Shore News articles.

There are a number of ways to contact our office. Please visit Room 319 at the State Capitol, call 586-6380, fax 586-6381 or email RepRiviere@capitol.hawaii.gov.

MAHALO!



20 years ago, I took a big leap and decided to follow my dream of owning my own business. Thus, the birth of Waialua General Store in 1991. Hundreds of customers have come through my door, many of whom have become dear friends. Without your support, patronage and loyalty, my dream would not have come true, let alone span two decades!

Thank you so very much from the the bottom of my heart to each and everyone of you! It has been a great pleasure and honor to have been part of your lives, but it is now time for me to relax and enjoy retirement! It is my wish that you continue to support Waialua General after my departure. I will miss seeing all of my customers, but I look forward to life's next adventures. Until we meet again.....

Aloha,
Dolores "Dolly" Menor

The Salvation Army Family Store
- Wahiawa store only

**All clothing 50% off
every day and
\$.99 clothing specials
on Fridays**

open Mon-Sat 9am-6pm
subject to change

For more information contact:
Barbara Millier at 808-522-400
Located at 435 Kilani Street in Wahiawa



Farmer & The Baker^{LLC}
(Formerly Mokuleia Landscape & Nursery)



**Trees,
Palms &
Shrubs**

Contact Us: 808-341-1992



Tony "Squiddy" Sanchez

11/17/1952 - 12/28/2011

**Celebration of life and paddle out.
Saturday, January 28th,
10 a.m., Velzyland**

**For more info contact
cora.sanchez@gmail.com
383-9220**



**Free Family Movie Night
at Waiialua Community
Association**



Kung Fu Panda 2

Fun for the whole family!
Friday, January 20 at 7 p.m.
FREE ADMISSION

Sponsored by:
North Shore Equipment Rental
Drinks & Popcorn for sale



For more information, call 637-4606
www.WaiialuaCommunityAssociation.org

KUA AINA



The Best!

· IN HALEIWA ·
637-6067

· IN HONOLULU ·
591-9133
AT WARD CENTRE

HALEIWA · TOKYO · HONOLULU · LONDON

BRRRR

It's been cold lately!
Perhaps you have an
extra blanket or two, used or new to
donate to our homeless neighbors.
Drop off blankets at the North Shore
News office.

A Warm Mahalo
342-3969



Council Chair
Ernie Martin
Serving You in District 2

We begin 2012 like we do every new year, with a sense of hope and optimism. As an election year, 2012 will also mean changes in all levels of government. Reapportionment will bring new political boundaries and public opinion will determine who prevails in the races for seats in City, State and Federal government. Closer to home, District 2 is one of four City Council seats not up for a contest until 2014, but the Council as a body could be significantly impacted by the 2012 election results. Decisions on issues are rendered by a majority of the nine City Council members. When trying to accomplish an objective, it is just as important to convince one's colleagues of the merits of a measure as it is to sponsor and promote a legislative initiative. Public testimony can have a dramatic impact on the outcome of that effort.

As Council Chair, I hope to increase the opportunities for public input at Council meetings this year by scheduling more regular Council meetings out at the Kapolei City facility as well as encouraging Committee Chairs to hold hearings on select issues out in the district. Plans are also underway to acquire a cable channel to be managed jointly by the City Administration and the Council that will

greatly enhance the current programming schedule of City activities available for public viewing.

The first meeting of the City Council in 2012 is scheduled for 10:00 a.m. on Wednesday, January 25. You can view the meeting agenda and the text of the bills and resolutions posted on the City Council's website located at www.honolulu.gov and you are always welcomed to contact my office at 768-5002 for more information.

There will be many interesting initiatives on the table for discussion this year. With the county-wide bans on plastic bags already passed by Maui, Kauai and the Big Island Counties, the Honolulu City Council will once again take up the issue after two failed attempts in 2008 and 2010. I am currently working on the provisions of a bill that would ban non-biodegradable plastic bags. I want to initiate a thorough review of issues and concerns that were previously put forth against such a ban and hope that we will be able to craft a bill with a reasonable chance of being adopted.

With the likelihood of a full funding agreement with the Federal government just around the corner, Honolulu is one giant step closer to actual construction of the proposed mass transit system. Once again I want to emphasize that Transit-Oriented Development will be a determining factor in achieving the optimum level of ridership that will ensure the success of rail and a corresponding reduction of the pressure to develop the rural areas of Oahu. I am hopeful that it will also provide incentives to revitalize smaller communities such as our own historic Hale'iwa town.

Waialua Elem. School seeks volunteers to coordinate projects

Last school year, parent, community and staff members on our School Community Council coordinated a project that resulted in our school building a multi-purpose stage that we used for May Day and will continue to use for many years to come. We have two more projects on our agenda for this year, but everyone is already stretched pretty thin. We are blessed to have a lot of volunteers that help us get through each day and let us accomplish a lot, but these folks already have very full plates. So, we are looking for additional help.

Project 1: We have a outdoor lanai area with furniture that is about 20 years old. We often have parents come to visit or eat lunch with their children and sit on the lanai. But the furniture is rusting away. We would not only like to see if we can put in new furniture, but also see if we can do something to provide some shade for the area. Of course, our funds are limited.

Project 2: We have an enormous amount of grey and white concrete exterior wall walk space. We want to paint murals that are educational in nature, especially for math. Students walk by these walls every day, year after year. We would like them to see colorful art that illustrates number patterns and math concepts.

Math graffiti.

We are looking for volunteers who could sign on to help coordinate the accomplishment of these projects. We are not looking for someone who wants to press their agenda on us. We are looking for someone who could help us get our own projects off the "wish list" and into reality.

We are looking for someone who can help see a project through from planning to completion, someone who has initiative, resourcefulness, persistence and the ability to work positively with others.

All we can offer in return is appreciation, recognition, and an excellent experience to enhance any resumé. Whether you are a college student waiting to enter the job market, a retired person looking for a fulfilling challenge, a business that wants to do community service with lasting value or anyone else with the personal qualities to bring a project together, we can use your help.

If you have the skills to coordinate projects and the willingness to serve the needs of our school, please contact Waialua Elementary at 637-8228 and ask for Twila Richvalsky, our Parent Community Network Coordinator (PCNC).

Celestial Celebrates 38 Year Anniversary Saturday, January 14 & Sunday, January 15, 2012

On Saturday, January 14, and Sunday, January 15, from 9 a.m. to 6:00 p.m., Celestial Natural Foods will be celebrating it's 38th year in business, in Hale'iwa. Celestial was originally established on January 16, 1974 as a Natural Foods Store and Juice Bar. The company has chosen a majority of their product selection to be organic foods. They support organic foods farmers both locally and around the globe by selling organically grown foods. The variety and selection is so diverse that you will just have to come in and see for yourself.

On Saturday and Sunday, Celestial will be collaborating with all of their brokers and suppliers to offer a great discount to all of our loyal customers. The day will be full of drawings, displays and free samples.

The Celestial Foods Management wishes to thank all their customers for their continued support throughout the years, and helping to make this Natural Foods experience a great success.

**Giant Sale – All Day
20% OFF all purchases**

Celestial Natural Foods 38th Year Anniversary

**Come help us celebrate 38 years
in business on the North Shore!**



**SATURDAY, January 14, & SUNDAY, January 15
Sat. 9am-6:00pm • Sun. 9am-5pm**

MAHALO & ALOHA!

In downtown Hale'iwa

66-443 Kam. Hwy. Ph: 637-6729 / Fx: 637-1922

Next to the Hale'iwa Post Office

HOLOHOLO MOBILE SCREEN SERVICE



- *new window installation
- *new screens/re-screens
- *pet proof screens
- *jalousie repairs
- *porch enclosers
- *sliding/swinging screen doors
- *pet grills & doors
- *solar screens
- *screen door roller repair

**FREE ESTIMATES
808-783-8764
www.Oahuscreens.com**

DRAFTPLANS HAWAII

- Over 10,000 floor plans & blueprints available for purchase online. Gather ideas for your own design.
- Drafting Service available for new home designs, additions, renovations, decks, fence, rock walls, etc.
- Free property specifications & title search info.

www.draftplans.com

Call for free estimates:
265-0035



Oceanside Chapel Service at Turtle Bay Resort



Every Sunday at 9 a.m. in the beautiful oceanside wedding pavilion.

Hosted by Pastor Ron Valenciana

- Non-denominational 45 min. service
- Traditional & Contemporary music
 - 15 minute sermon
- Free gift to all first-time visitors
- All are welcome! Free validated parking

For more information call Pastor Ron at 342-3969.

*When church is pau,
enjoy dining at the Palm Terrace,
Hang Ten Pool Bar, or Lei Leis.





**Direct From
Donovan
State Senator
Donovan Dela Cruz**

The Senate Committee on Water, Land and Housing (WLH), of which I am Chair, will be hosting the Department of Land and Natural Resources' (DLNR) North Shore Listening Session on Tuesday, January 31, 7:00-9:00 p.m., at Waialua High School cafeteria. The DLNR Administration team, including Chairperson William J. Aila, Jr., First Deputy Guy H. Kaulukukui, and Water Deputy Bill M. Tam, will attend to hear community comments, questions, and concerns regarding topics under the Department's jurisdiction. We have been conducting these listening sessions statewide over the past several months to give residents the opportunity to meet with the DLNR team.

The meetings and site visits DLNR is conducting are very successful and have never been done before. Director Aila and Deputy Kaulukukui are being proactive in conducting these sessions to help Senators address community concerns and needs.

William J. Aila, Jr., Chairperson of DLNR, said that these listening sessions are purely for the Department to visit with communities and receive feedback on the communities' ideas and concerns relating to Department responsibilities. He believes that community participation is essential to caring for our land and natural resources in Hawai'i.

The DLNR is responsible for managing 1.3 million acres of state land, 3 million acres of state ocean waters, 2 million acres of conservation district lands, our drinking water supply, our fisheries, coral reefs, indigenous and endangered flora and fauna, and all of Hawai'i's historic and cultural sites. DLNR's management responsibilities are vast and complex, from the mountaintops to three miles seaward of our beautiful coasts. The health of Hawai'i's environment is integral and directly related to its economy and quality of life.

I encourage you to attend the listening session if you have any concerns or comments regarding any function, activity or project under DLNR's jurisdiction.

If you are unable to attend but would like to send your comments, questions, and concerns to the DLNR please e-mail: DLNR2011ListeningSessions@hawaii.gov.

Tuesday night at Kahuku Library

Kahuku Public & School Library will offer "Tuesday Night at the Library" programs in January 2012. All programs will be conducted in the Conference Room and are suitable for all ages, unless otherwise noted. Admission is free:

* January 17, 6:30 p.m. - "Chronicling America Digital Project." Dore Minatodani, University of Hawaii at Manoa's Hawaiian Pacific Collection Librarian, will present and demonstrate the Library of Congress's Chronicling America website: <http://chroniclingamerica.loc.gov> and provide an overview of the more than 15 Hawaii newspapers as well as other U. S. newspapers available online, courtesy of a National Endowment for the Humanities grant.

* January 24, 6:30 p.m. - "Go HI TECH @ Your Library: Introduction to Microsoft IT Academy." Learn how this free web-based, self-paced training program of more than 350 courses in the technology areas that are most needed for success in both the academic and workplace environments can benefit all our users - from keiki to kupuna. All you need to get started is a valid HSPLS library card.

* January 31, 6:30 p.m. - "The Help." Watch the movie nominated for five Golden Globe awards based on the book by Kathryn Stockett. This is the story of an aspiring author during the civil rights movement who decides to write a book about the African-American maid's viewpoint on the white

families they work for, and the hardships they encountered on a daily basis. Popcorn and refreshments will be served; while supplies last. Rated PG-13 (must be 13 or older or accompanied by an adult). Contact the Library as soon as possible if a sign language interpreter or other special accommodation is needed for these programs.

Kahuku Public & School Library is located on the Kahuku High and Intermediate School campus, at 56-490 Kamehameha Highway. For more information, please call the Library at 293-8935.



**THE RAINBOW
BALLOON MAN**

864.9599

albertnakanishi@aol.com
Parties • Special Events

2011 OPERATION: TOYBOX & CHRISTMAS BREAKFAST

Mahalo to all the businesses, organizations and volunteers for your support and donations to help make this year's Operation: Toybox & Christmas Breakfast a miraculous success.

A special thanks to Turtle Bay Resort for feeding over 900 of our hungry guests. There were smiles on over 300 keiki and

over 100 teens took home brand new Christmas gifts.

Mahalo to North Shore Christian Fellowship for making 350 grocery bags.

Donations: A Charitable Foundation, Don & Barbara Ahia, Harriet & Barney Akuna, Dani, Shawn, Nikolai & Sergi Allen, Clara Almeida & Pat McDermott-Sagon, Aloha Wedding Planners, The Ames, Andi, Nicole & Luca, Dee & Nick Arecchi, Jace Atkinson, Peg Austin, Albert & Judith Bader, Steven Bain, Wendy Barnfield, Jon & Jen Bartee, Tae Basta, BBC Enterprises, Ray & Jeannie Beatty, Perry & Stefanie Beissel, Brian & Kimberly Bell, Tony Boquer, Scott Brewer, Yoko Brewer, Jasley Brooks, The Brown Bottle, Bruce, Wende & Zane, Mary Jo & Bob Buell, Byrne & Co., Bill Cameron, Lisa Carley, Norm, Joshua, Caleb, Laura, Taylor & Shelby Carpenter, Adrian & Sam Carter, Verna Joy Cass, Celebrity Tuxedos, Colin Cherrywell, Eugene Chin M.D. & Susanne, JJ Cisneros, Bernie Coder, Bob & Trish Coder & Koa, Brigitte Coley, Jimmy Creed, Lanny Curry, Col. John & Peggy Cutting, Becca Dailey & Mokuleia Ladies Polo, Karen D'Ascoli, Vanessa, David, Grace & Abigail Damato, Eric & Mirella Davies, Noah Doak, Amber & Eric Doig, Dream Of A Better World, Elder Duck, Eason Ohana, Norman & Maureen Eburne, Ed & Wendy Flick, Bo & Summer Gardner, Patsy Gibson, Gina, Sean Ginella, Giovanni's Aloha Shrimp Truck, Linc & Cynthia Glenister, Angela Gooden, Joan & Gilbert Gouveia, Grach Family, Thomas Graybill, Genie Grey, Ralph & Cathy Grey, Haleiwa Art Gallery, Haleiwa Jr. Meisho YBA, Happy Trails-Mark & Tammy Becker, Cassie Hardin & Family, HCAP, Hiebert Family, Jonathan Hiebert, The Heinsons, The Hodel Family, Tom & Layla Holden, Ruth Holmberg, The Hopewells, Dan & Leanne Howe, Keith, Denise, Nikki & Zackary Huffer, Lisa Hyatt, Hydromex Hawaii Nicole Ota & Gregory Ikeda, Island X, William Jacobson, Jammin Surfboards, Richard John, Julius, Kamehameha Ho'oulu Data Center, Kamehameha Preschools-Haleiwa II, Abralette Kaneakua, Nicole & Nainoa Kanoho, Mahealani Keawemauihili & Patrick Soberano, Evangeline Kilmer, David & Cynthia Laramie, Janet & Henry Larrucea, David & Katherine Lee, Liliuokalani P.C. Sunday School, Catherine Lo, Earle & Mary-Anne Long, Peggy Loof, Michael

Mahalo for a very Merry Christmas!

Operation: Toybox on December 25, 2011



PHOTOS BY
JOE BROWN & TRISH CODER



Christmas morning 2011 was indeed a very Merry Christmas Day! The sun was warm and bright and so were all the hearts of young and old as we came together to bless and be blessed. Over 2,000 new toys was distributed to 385 happy keiki and over 120 teenagers received nearly 200 "awesome" items as well as filling empty stomachs with tasty bugers & hotdogs. Over 700 enjoyed a delicious holiday breakfast compliments of Chef Hector Morales and Turtle Bay Resort. Over 125 jubilant volunteers set-up, served and satisfied the needs of hundreds of keiki and kupuna. Over 300 holiday grocery bags were distributed by the North Shore Christian Fellowship. All those that donated made this Christmas miracle possible! It was too much fun!

Lorne, Lougee, Tyler MacDonald, M/M Mahoney, Manu O Ke Kai Canoe Club, Marilyn Martinson, Reed Matsuura, Scott McLaughlin, Ricky Mefford Family, Darlene Menor, Nick Mesece-Wave Riding Vehicles, Mike & Ian-Lei Leis, Belinda Miranda, Zack & Kirk Moeller, Ross & Marion Moody, Marc Munden, Keono Nahoopii, Maureen & Dennis Nakashima, The Nations, Nelson & Bunny Ng, North Shore Auto Parts, North Shore Chamber Of Commerce, North Shore Christian Church, North Shore Hanapa'a Club, Todd Okazaki, Jay Oku, Old Kemoo Pub, Jan Olson, IWS/Det2, Kenneth & Florence Orton, Heather O'Shea, Lawrence & Kristine Oswald, Paalaa Kai Bakery, PC DC Wahiaawa Early Intervention, Peggy, Yu-chuan Peters, Chris & Mark Peterson, Pat Peynald, Pioneer Hi-Bred, Craig, Chris, Connor & Callie Powell, Price, John Primacio & Nalani Mattox-Primacio, Gladys Pualoa-Ahuna, Pupukea Grill, The Quintal Family, Kodia Rae, Rainbow Watersports, Raine Barkhorn Charitable, Ray & Betty Raymond, Brian Saito, Randolph & Aloha Sandborn, Norris Sandvold, Monique Roduziner, Bobby Jo Rogers, Josette Rouas, Saccoccio & Lopez, St. Michael School, Eric Schneiderhan, Randall & Charlene Scott, Stephen Andy Sapp, Kent & Joan Sather, Save The Sea Turtles, Robert & Jo Jean Schieve, Benedicta Schmidt, Eric Schneiderhan, Randall & Charlene Scott, Stephen Scott, Warren Scoville & Honey Girl, Danielle Sellers, Elder Sheranian, Abdur Shoyeb, Skydiving School, Kelly Slater, Steve Sollera, Stuart Spangler, Melissa Spectre, Forrest Stanley, Roger & Joanna Strout, Teresa & Kevin Suan, Florida Subia, John Sullivan, Sunset Shores, Surfing The Nations, Surf & Sea, Bob Swartz, Tactical Investment Management, Matt & April Taylor, Team Real Estate, Gerry Teramae, The Estates At Turtle Bay, Kimberly Tobin, Dan & Carmel Tomlinson, Triple Crown Of Surfing-Randy Rarick, Tracie Trippins, Tropical Rush, Dr. Guy Tucker, Alexia Valenciana, Villa Management, Marion & Dick Viltitow, Sean Volpe, Waialua Christian Church, Waialua High School, Waialua High Japanese Club, Waialua Soda, Waimea Valley, Scott Wallace, Eveline Wander, Ron Warren Ohana, Richard Weil, Graham & Kailani Weiss, Raynette Weisskopf, Jimmy White, Robert Wilhelm, Valerie & Mark Willman, Dennis Wilson, Maggie & Kahai Wodehouse, LS Women, Randy & Mary Wood, Wyland, Thomas & Nancy Yamamoto, Nancy Yamauchi, Ted Nakamura & Scott Yamauchi, Sherry & Debra Yamauchi. The Soliders, Sailors, Airmen, Marines, Civilians and Family Members of SOCPAC.



Volunteer List: Chris Abbott & Lo, Donnamae Ahu, Iva Akui, Danl, Shawn, Nikolai & Sergi Allen, Larry Anselmo, Joy Ashdown, Kathleen Bajo, Eddie Balidoy, Brian & Kimberly Bell, Barbara Beppu, Nicole Bolosan, Cindi Burkhouse, Robert Burgess, Anuhea Burtch, Lydia Butler, L.C., Cameron, Laura, Taylor & Shelby Carpenter, Norm, Joshua, Caleb, Adrian & Sam Carter, Dan Chargualaf, Charlene, Bob & Trish Coder & Koa, Cyan, Vanessa, David, Grace & Abigail Damato, Betty Depolito, Marcellis de Sales, Joann Dicion, Randall Erice, Khrapovitskaya Eugenia, Charlynn Foo, Lavina Forvilly, Dorcas Fuiava, Marie Fujinaga, Cindy & Phil Gagle, Terry & Gloria Gerber, Annie Gerstenberger, Peggy Golden, Ethel Gomes, The Guam Group, Tino Gurr, Paige Hagen, Jane Hayes, Morgan Hayes, Daniela Haynes, Dida Hernandez, The Hieberts, Dana Holck, Keith, Denise, Nikki & Zackary Huffer, Skill Johnson, Wesley Johnson, Jodine Jones, Kamuela & Maile, Nicole & Nainoa Kanoho, Lisa Kekua, Mitchell Kiyohiro, Jan Kribell, Solomon Kuehu, Douglas Lagupe, The Lanes, Lynn Leleo, Diane Lin, Nita Lopez, Tyler MacDonald, Chefs Maria & Leona, Sue Mattson, Reed Matsuura, Chris Maynard, The Mesins, Noah Miller, Kirk & Zack Moeller, Ku'ulei Monge, Gloria Moore, Chef Hector Morales, Peter Namahoe, Jacob Ng, North Shore Christian Fellowship, Dana Oahia, Joella Ocampo, Valerie Oga, Sabrina Ognoskie, Pastor Luiz Oliverios, Diane Parker, Edward Pearce, Susan Pernia, Frank Perreira, Chris Peterson, Mark Peterson, Mrs. Porras- Tang, Craig, Chris, Conner & Callie Powell, Daniella Powers, Heather & Daniel Quigley, Danicole Ramos, Bobby Jo Rogers, Linda Rowen, Jenna Rowley, Lita Rueger, Paul Saccoccio, Ray, Cecelia & Tily Scott, Jules Seabrooks, Ole Seyler, Elder Sheranian, Christie Shinn, Steve & Joni Shiraishi, Sierra Shore, Jason Simpson, Marylane Smith, Pastor Geno Takaki, Royce Tashiro, Tracie Tippins, Franco Tramontano, Matt Verdadero, Sean Volpe, Connor Wagner, Chloe Ward, Ron Warren Ohana, Wesley, Bob & Gina Willman.

Once A Month Church

2012 SCHEDULE



Pastor Ron Valenciana

January 29
February 26
March 25
April 29
May 20
June 24

July 29
August 26
September 30
October 28
November 25
December 25

ALL SERVICES EXCEPT DEC. 25
at HALE'IWA BEACH PARK
for more info call
808-342-3969
oamchawaii@aol.com
www.onceamonthchurch.com



Were the church that gave to you!



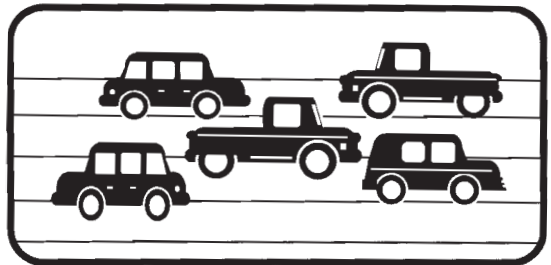
The Waiialua Community Association (WCA) will hold its Annual Meeting on Wednesday, January 25th, 2012 with a meet and greet from 6-7 p.m., and meeting at 7 p.m.

The agenda includes election of new trustees, a report on 2011 operations and distribution of a copy of the proposed, revised By-laws.

On Wednesday, February 22nd, 2012 a special meeting will be held for membership approval of the proposed, revised By-Laws. All members who have paid their dues will be eligible to vote at both meetings. Please visit www.waiialuacommunityassociation.org to complete the membership form, visit the WCA Office at 66-434 Kamehameha Hwy., across from the Haleiwa Post Office or call 637-4606 for more information.

DONATE YOUR VEHICLE

running or not



Once A Month Church
a 501c3 charity serving the North Shore

Over 150 good used cars GIVEN to needy individuals possessing valid driver's license past 5 years.

342-3969
for more information

Waialua, The Saga of the North Shore

CHAPTER ONE

This is the first in a series of articles that will endeavor to tell the tale of our neighborhood. The Saga of the North Shore is a very long story that began a long, long time ago.

When you pick up, roll or toss a rock, have you ever wondered just how old it is? If your rock is from the Ka`ena side of Haleiwa, it is likely to be much older than the rock you pick up from the Kahuku side.

The people who know how to date rocks tell us that the oldest found beneath O`ahu date to the Miocene Age, over ten-million years ago. It was a time when the continents had nearly arrived at their present locations, dinosaurs were long gone, mammals on land and at sea were diversifying, while birds, reptiles and insects populated the planet.

Later, about three and a half million years ago, the mountain we call "Waianae", broke the surface of the sea, followed less than a million years later by the adjacent "Ko`olau". In time, their basaltic shield volcanoes joined to make one massive island that looked, for a time, much like the Big Island today.

The caldera of Waianae, behind Schofield Barracks, filled and spilled while the elongated Ko`olau caldera running from Waimanalo to Kaneohe did the same. Over time, the island drifted northward while the windward side of Ko`olau and the western slopes of Waianae fell away into the sea. Much later a series of volcanic tuff cones, such as Diamond Head and Punchbowl, burst through the crust on south-eastern O`ahu. Those had little direct effect on the Waialua area, except during periods of southerly winds.

It was not as though Waialua just evolved in silent, passive millennia. There were dynamic changes in weather, temperature, magnetic orientation and sea level. The highest stand of the sea on the North Shore is marked by a fossiliferous conglomerate of white rocks 89 feet above sea level and loose coral cobbles ten feet above that near Kaena Point. Geologists refer to this high-water period as the "Kaena Stand" and note how below that the sea level may have come up and down many, many times.

The lowest sea level, some 1,300 feet below today's beaches, occurred during volcanic uplifting about a million and a half years ago. More modest, 300' below sea-level shore-lines were formed twice. One just preceded the "Kaena Stand" and another just 17,000 years ago.

Meanwhile, the deep valleys of Waimea, Anahulu, `Opaepala and Helemano were being cut out from Ko`olau while the soils of Poamoho and Kaukonahua were washed to sea from Waianae. Coral reefs formed and died to become the white sandy beaches we see today.

Sea-life evolved as nature allowed. While sea-

By Kalewa
plialoha@hula.net



Loulu Palm

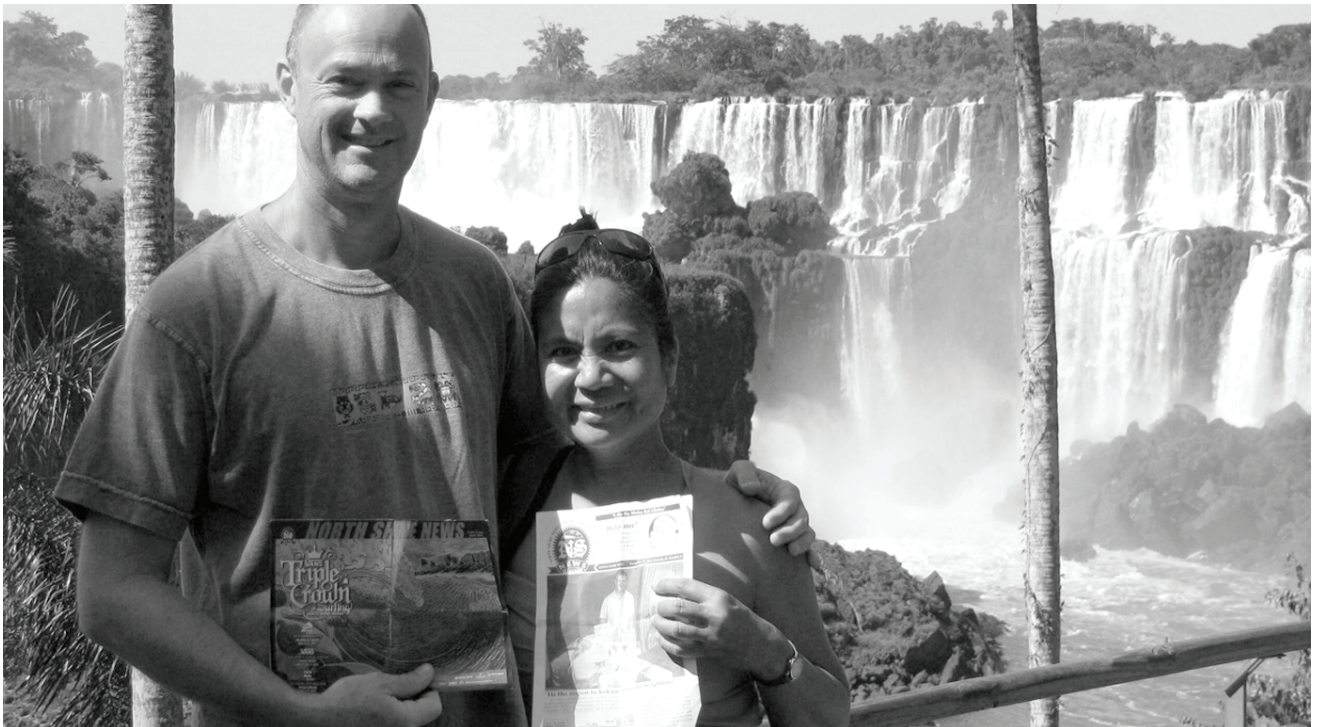
turtles cruised the shoreline, there were no reptiles or amphibians whatsoever on land. (The little Hawaiian snake came later). The streams were alive with large dragonflies and small spiders. Two species of shrimp and five types of fish, the most numerous being the `o`opu, swam into fresh water for much of their life cycles. Mollusks followed, with some of them spending their entire lives in fresh water while others adapted to dry land and trees. Ferns, grasses and bursts of colored flowers interrupted the landscape dominated by varieties of Loulu Palms.

Large flightless birds grazed dumbly on ti and other edible plants, while brilliantly colored honeycreepers skittered about the forests, gray stilts stalked the beaches while ducks and geese hid their young from hawks and eagles soaring above them all.

The early evening and night was given over to the only mammal to inhabit the land. `Ope`ape`a, the Hoary Bat who's ancestors had somehow arrived from North America some thousand years earlier, spent his nights chasing sonar signals of flying insects while long legged owls hunted what ever else dared move about in the darkness.

It had taken millions of years to shape Waialua into that pre-populace paradise. No creature then inhabiting the land could have imagined what was to follow.

To be continued in our January 25 edition.



OFF da Island in South America

Pupukea residents Mike & Stephanie Van Lear recently vacationed in La Moza, Uruguay where Mike enjoyed uninterrupted surf sessions. Then they traveled to Argentina to see the breathtaking Iguazu Falls known as Las Cataratas del Iguazu. Realistically nothing was more relaxing than unpacking a recent edition of the NSN and remembering the good times back on Oahu's beautiful North Shore. For more information on our OFF da Island photo campaign turn to page 31.

Waialua High School Class of 2012
Project Graduation

Zumba-thon

DATE: SATURDAY, JANUARY 21ST
 TIME: 9 A.M. TO 11 A.M.
 LOCATION: WCA - HALEIWA GYM
 COST: \$10 Pre-sale or \$15 @ the door

Call Marie Sabo at 306-3889 or email:
waialuhs2012@hotmail.com

Please support the Waialua High School Parent Boosters raise funds for Project Graduation 2012
MARCH 10 PICKUP

Pre-sale tickets now available:
 Kalua Pig / Kulolo \$7.00
 Rice Pudding \$5.00

Call Marie Sabo at 306-3889 or email: waialua2012@hotmail.com

CASH
 FOR YOUR
ROLEX
 GOLD & DIAMONDS
TODAY

OUR BUYERS ARE HERE ON THE PREMISES



FROM OUR RETAIL AND COLLECTOR DIVISION

TOP DOLLAR
 FOR ROLEX AND OTHER SWISS WATCHES, DIAMONDS, GOLD
ALL THIS WEEK

CALL 943-6210 **PACIFIC DIAMOND WATCH WHOLESALERS**
 1356 Kapiolani Blvd.



Abrigo 'Ohana launches second monthly Kanikapila

Three North Shore siblings have been hard at work, for over two years, perpetuating traditional Hawaiian music in Waimea Valley. This year, they continue their community based event, the Waimea Valley Kanikapila, and proudly announce the birth of a second Kanikapila at Bishop Museum.

Timi, Emily, and Quinn Abrigo's work on the Waimea Valley Kanikapila has brought many local musicians and families together. It has earned them an "Opio Award" for outstanding youth from the Office of Hawaiian Affairs, and become a television series on Oahu's public access television station, 'Olelo TV. Known as the band "Abrigo 'Ohana", these three keiki look forward to continuing and growing the Waimea Valley Kanikapila this year. With the loving support of Bishop Museum's Events Manager, Mele Apana, they look forward to expanding this grass roots effort to carry on traditional Hawaiian music into the heart of Honolulu.

Kanikapila is a traditional Hawaiian music jam session. The purpose of these events is to perpetuate Hawaii's music and culture through song. The events are very family focused, all ages and skill levels are invited to participate. Since September 2009, Kanikapila has been held on third Sundays at Waimea Valley. The Bishop Museum Kanikapila will be held on the last Sunday of every month. Both Kanikapila are free and open to the public. Admission into Waimea Valley and Bishop Museum are purchased and accessed through a separate entrance. Kama'aina rates are available at both locations.

Mother Lanet Abrigo says of her children: "On paper, the Waimea Valley Kanikapila appears to be just a jam session, but in person, it is so much more. My children have been hosting this event for over two years, and I have yet to attend one that has not moved me to tears. What makes it even more beautiful is the venues, Waimea Valley, and now, Bishop Museum. These two places have tremendous cultural significance to Hawaiians and their music." She added: "Being at the Waimea Valley Kanikapila is a spiritual experience. It's almost like the land beneath your feet is filling you with love for the music. I anticipate the Bishop Museum Kanikapila will also have a profound spiritual quality. We are very grateful to both Waimea Valley and Bishop Museum for opening the doors to support the perpetuation of traditional kanikapila."

2012 Waimea Valley Kanikapila

(first 6 months of the year)

January 15	March 18	May 20
February 19	April 15	June 17

2012 Bishop Museum Kanikapila

(first 6 months of the year)

January 29	March 25	May 27
February 26	April 29	June 24

Time: 1 to 4 p.m.

Locations:

Waimea Valley - North Shore, O'ahu
59-864 Kamehameha Highway, Hale'iwa, HI 96712-8411

Bishop Museum
1525 Bernice Street, Honolulu, HI 96817-2704

Announcing our . . .

2012

NORTH SHORE NEWS

Restaurant Directory



Publication date: March 7
Deadline date: February 23

Owners & Managers:
Reserve your ad space today.

637-3138

or email: NShoreNews@aol.com

NORTH SHORE NEWS

~ *Special 25% Discount Offered.* ~

North Shore Agriculture Action Update

During 2011, the Agriculture Committee of the North Shore Neighborhood Board (NSNB) addressed a number of agriculture issues affecting our community that I've summarized below:

In October the NSNB unanimously approved the Ag Committee's recommendations to: 1) send a letter to the City asking that water from Lake Wilson remain primarily available to North Shore farmers and not diverted to central Oahu; 2) request that the City Council appoint additional representation from North Shore farmers on the Agriculture Task Force; 3) request the Real Property Tax Assessment office include a clear and objective definition of "commercial use" in the next changes to the Agriculture Dedication Bill (Bill 44); and 4) send a letter to the University of Hawaii College of Tropical Agriculture requesting that the experimental stations at Waiale'e and Poamoho remain as North Shore agriculture assets.

Then in November the NSNB unanimously approved: 1) a Resolution on food safety protecting farmers from over-regulation and a Resolution stating that "local food for local consumption" is the highest priority for NS Ag lands and requests our City Councilman, the Honorable Ernest Martin submit these Resolutions to the Honolulu City Council for approval; and 2) sending a letter to the State De-

partment of Transportation, supporting a farmers' market operation on the parcel of land adjoining Haleiwa town and Haleiwa Beach Park.

Finally in December the NSNB unanimously approved submitting a 2012 Legislative Slate to our State Legislators requesting: 1) the NS Resolutions on Food Safety, Food Sovereignty and Local Food for Local Consumption be introduced for State approval; and 2) a new Bill be introduced to repeal Act 55 (SB1555) (http://www.capitol.hawaii.gov/session2011/bills/SB1555_CD1_.htm). This Bill, approved last year, forms a "Public Land Development Corporation" that bypasses the normal approval processes and will approve the development of commercial activity on State lands that could lead to unwanted development on State properties especially Ag lands.

The Ag Committee encourages public commentary to help develop a community vision of agriculture. For 2012, the Ag Committee will meet quarterly on the second Thursday of each month at 7 p.m. in the front club room of WCA, please join us; the next meeting being February 9th. Mahalo. Al Santoro.





kaleimaeole Handcrafted Jewelry

Visit us at the North Shore Country Market
(Sunset Beach Elementary across from Pipeline)
Saturdays from 8-2
www.96712jewelry.com

Beautiful handcrafted jewelry from Oahu's North Shore. Each piece is handmade and unique, using fine silver, gold fill, precious and semi precious stones, Tahitian and freshwater pearls, suede, leather, beach glass and shells. Our silver comes from reclaimed sources and is not mined.

Our collection is on display and available for purchase at the North Shore Country Market and other venues on Oahu.

See our website for a complete calendar of events.



Photos by Val Loh

HAPPY 75th BIRTHDAY!



We love you and wish you many, many more birthdays to come!
Words truly cannot express the love and gratitude we have for all you have sacrificed,
all you have taught us and all you have done to make us who we are today.
You are our silent hero...the man who says little but does so much.

Your Loving Wife - Dolly
Da Kids - Oliver & Lei, Darlene & Hao, Orlando & Appen
Da Grandkids - Julian, Mika, Bailey and Makai

BULLETIN BOARD



SEAMLESS ALUMINUM & COPPER RAINGUTTERS

"Let us Protect your Castle"

John Manning, President

930 Palm Place
 Wahiawa, Hawaii 96786
 Ph: (808) 638-7246
 Fax: (808) 621-4633

Email: gutterking808@hotmail.com
 Website: gutterking808.com
 License: C- 23936

HAIR SPECIAL

Full Highlight and Cut \$100.00

GINA WALKER

Hairdresser to the stars

from Malibu, CA

Senior Stylist & Color Master

Now at our new location

North Shore Salon & Spa

in Haleiwa Town 808-375-3984

Paradise Lua



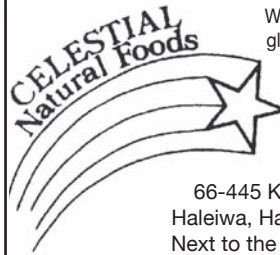
Parties • Special Events

Anykine Private or

Public Functions

"Portable Sanitation at its finest"

690-8116



Specializing in vegetarian foods, vegan foods, whole foods, organic food. Wheat free, dairy free, raw foods, gluten free. A complete selection of natural foods for 37 years.

Make earth day, everyday.

Open 7 days.

Mon.-Sat. 9am-6pm.

Sun. 9am-5pm

66-445 Kam. Hwy

Haleiwa, Hawaii 96712

Next to the Post Office

808-637-6729 • 808-637-1922 fax

"THE BULLETIN BOARD THAT IS IN EVERYONE'S HOME"

Are you . . .

- ~tired of waiting days or weeks for your vehicle?
- ~tired of wrong diagnosis?
- ~tired of taking your vehicle back again?
- ~ paying too much?

Give us a call . . . we can help!



Auto Repair Service Moped & Small Engine Repair

- Licensed and Certified ASE Master Mechanic
 - Computer and Electrical Specialist
 - We work on all Makes and all Models

Serving the North Shore

(808) 330-0459

CD RELEASE PARTY

Friday, February 3



WAIMEA VALLEY PIKAKE PAVILLION

Mixed Plate

W/ ALIKA BAJO

5:30p - 9p no cover
Plenty drink Specials

Enjoy tunes from their new CD

"SPECIAL OF THE DAY"

raffle * prizes * cool tunes

MixedPlateSpecialMusic.com

Letters to the Editor

Dear Editor :

I enjoyed reading Captain Rogers' article "How the attack on Pearl Harbor was defended from Hale'iwa". A few years ago while in Alaska working on a potential golf course design project I was invited by the owner of a construction company to a party at his home in Anchorage and had the pleasure and honor to meet General Kenneth Taylor. We sat down for quite awhile and he told me the story of that infamous day which was accurately described by Captain Rogers' article. General Taylor was the technical advisor for the movie "Tora!Tora!Tora!" and it was a great evening to hear the personal account from General Taylor. As a side note on the attack on Pearl Harbor, Commander Fuchida, Imperial Japanese Navy who led the attack on Pearl Harbor and survived the war. He was living in the countryside of Japan and searching for the meaning of life and trying to decide what he was going to do when he met a Christian missionary in Japan one day and subsequently became a Christian. Commander Fuchida became a pastor and participated in Billy Graham's Crusades over the years. I believe Pastor Fuchida then pastored a church in California until his death. His story is told in the book "God's Samurai", a great read.

Semper Fi,
LtCol Ken Zitz, USMC(Ret),
Waialua, HI

Wahiawa book sale

The Friends of the Wahiawa Public Library will conduct a Booksale at Wahiawa Public Library from Monday, January 23 through Friday, January 27 during normal library hours in the Meeting Room.

The hours of the Booksale will be:

- * January 23 (Monday) and January 25 (Wednesday) from 9 a.m. to 5 p.m.
- * January 24 (Tuesday) and January 26 (Thursday) from noon to 8 p.m.
- * January 27 (Friday) from 9 a.m. to 3 p.m.

A variety of gently-used books, CDs, and videotapes will be on sale at bargain prices. Come early for the best selection. All proceeds from the book sale will benefit the Library.

Wahiawa Public Library is located at 820 California Avenue. For more information, please call the Library at 622-6345.

BULLETIN BOARD



Featuring the largest selection of certified organic produce on the North Shore.
 No panic...ours is organic.
 Open 7 days.
 Mon.-Sat. 9am-6pm.
 Sun. 9am-5pm

66-445 Kam. Hwy
 Haleiwa, Hawaii 96712
 Next to the Post Office
 808-637-6729 • 808-637-1922 fax

When it's time to tie the knot...
www.hawaiiweddingminister.com
 informal beach weddings a specialty
 (808) 342-3969

N-C PLUMBING & SUPPLY

Cont. Lic. No. C-8913



- RESIDENTIAL & COMMERCIAL SALES & SERVICE
- CONTRACTING & DESIGN • HOME PLUMBING SERVICE
- PLUMBING FIXTURES, HEATERS • FREE ESTIMATES

Nestor P. Calilao (Owner) Bus: 637-8662
 P.O. Box 769 Res: 638-5157
 Waialua, HI 96791 Cellular: 372-8718
 email: nncplumbing@hawaii.rr.com

BOW WOW BUNGALOWS

Licensed Boarding Kennel
 North Shore, Oahu

Reasonable Rates • Ph. 637-2562

These Dogs Have Fun!

Pilates with Linda Yadao

Private, Semi-Private and Mat Classes
 Over 30 Years Experience

Call: 637.1230
 linda@ynrmarketing.com

GROVER MASONRY

Foundations, Slabs
 Retaining Walls, Backhoe Work



RICK
 (808) 638-8120

License # C-18302
 Free Estimates

Munden Design & Build

Lic.#BC19632

Design • Plans • Permits • Construction
 Additions & New Residences
 808 391-8616

Providing quality work since 1978



DR. PORTER TURNBULL

Chiropractic Orthopedist

(808) 638-8740

Appointments available Mon.-Sat.
 (evenings by appointment)

- Industrial accidents & auto injuries
- Sports injuries • Spinal care
- Safe, Effective, and Gentle



"HONEST DEALS ON QUALITY CARS & TRUCKS"
 Established 1985

LINNE HOLMBERG
 Owner

530 Paiea St.
 Honolulu, HI 96819

Lonestarmotorsportsllc.com

Honolulu: 834-0808
 Fax: 834-6602
 Cellular: 222-4272



LIC. #AC 18275

GENERAL ENGINEERING CONTRACTOR

Full Service Sitework
 Contractor
 Septic Systems & Tanks
 25 yr. exp.

Michael Cowper 638-7200
 cowperhawaii.com

North Shore News



2012 Schedule

PUBLICATION DATE	EDITION	DEADLINE DATE
January 11	#1	December 29
January 25	#2	January 12
February 8	#3	January 26
February 22	#4	February 9
March 7	#5	February 23
March 21	#6	March 8
April 4	#7	March 22
April 18	#8	April 5
May 2	#9	April 19
May 16	#10	May 3
May 30	#11	May 17
June 13	#12	May 31
June 27	#13	June 14
July 11	#14	June 28
July 25	#15	July 12
August 8	#16	July 26
August 22	#17	August 9
September 5	#18	August 23
September 19	#19	September 6
October 3	#20	September 20
October 17	#21	October 4
October 31	#22	October 18
November 14	#23	November 1
November 28	#24	November 15
December 12	#25	November 29

Direct-Mailed to Every Home

MOKULEIA • WAIALUA • HALE'IWA • KAHUKU • LAIE

Every Other Wednesday

12,000 copies

"The North Shore's most popular publication" since 1970

(808) 637-3138 • NShoreNews@aol.com

www.northshorenews.com



The North Shore News is published every other Wednesday and mailed free of charge to all North Shore homes and businesses. Extra copies may be obtained at our office.

PRESS RELEASE POLICY: Submit press releases in person or by fax, mail or email to Editor, North Shore News, P.O. Box 1117, Haleiwa, HI 96712. Please type your releases and keep them shorter than 200 words unless they are of an unusual news interest. Releases should be viable news stories and are published on a **space available basis only**, with priority given to those received in our office first. You may attach photos. We are not responsible for the return of any photos. All materials are submitted at owner's risk. We reserve the right to edit and/or refuse all submissions including advertising.

EDITORIAL POLICY: We welcome articles and letters from our readers. Letters to the Editor are published on a space available basis only and preference is given to shortness of length, and quality of content. We prefer to run not more than one letter, per person, per 6 month period. Letters subject to edit.

Views expressed by our contributing writers and advertisers do not necessarily reflect the view of the management and staff of the North Shore News. All rights reserved. Reproduction in whole or part without permission is prohibited. © 2012.

PUBLISHER/EDITOR
RON VALENCIANA

TYPOGRAPHY
DOWNTOWN GENERAL STORE
BOOKKEEPING & CLASSIFIEDS
LINDA SEYLER

CONTRIBUTING WRITERS
RON VALENCIANA,
NATY HOPEWELL

CLASSIFIEDS

♥♥Need a minister for a North Shore wedding? Hundreds of knots tied for happy couples on Oahu. Simple beach-side ceremonies to formal church or chapel services. I'll make your special day an extraordinary memory. Call & leave clear message with phone number & possible date, time & place. 342-3969. Also: Vow renewals, house blessings, baby luaus.

PAUMALU ELECTRIC
David C. Hancock
638-9054 / Lic#C18074

SHORE ELECTRICAL SERVICE
New Const-Remodels
638-0049 / Lic#C20777

FREE Pregnancy Test
Above Haleiwa Post Office
Call for hours 779-4685

LGR Construction
Remodel • Repair • Design
Drafting • Painting • Small Jobs
Affordable rates. 343-4453/Lic#26759

Dog/Cat Nail Trimming
at your home only \$15.00
Call Julie 637-5395

Aloha Computer
PC Repair/Virus Removal
Fax/Copy/Internet Access
372-2667 or 237-4558

Lawn Care For You
Mowing, Trimming, Light Hedging
Call Thomas 637-5839

Ross McGerty BC24080
349-6359 • 637-9539
From Waiialua to Sunset
Make Me the First Call
for Home or Rental Repairs
or Renovations

EXPERT ELECTRICIAN
Fans, emergency services, etc.
Jim Richards 371-9369

PARADISE PLUMBING INC.
New Const • Repairs • Remodels
808-368-1473 / Lic. 29856

Holoholo Mobile Screens
New Screens • New Frames
Screen Repairs • Pet Proof Screens
Sliding Screen Doors • Affordable Rates
Call Today 783-8764

BEACH PLUMBING & ROOTER
Over 30 years experience
Call Larry 637-6400

Handyman Services
Remodeling, Carpentry, Floors,
Concrete, all parts of Construction
Call Bob "The nicest guy in the
business" Ph. 282-2812

Seamstress
Rita Bell
497-3666

Haugan Construction LLC
Build & Repair - Big & Small
Let's Talk
Steve 542-9269

Automotive Services
and Restoration
• Auto Body & Paint
• Detail & Shampoo
• Upholstery
Rick Estrada - 216-9419

HARVEY'S REPAIR, LLC
24 hrs Towing Service
Specializing in opening
locked car doors
Call any time 478-0333

ANGELS
PLUMBING
Repairs
Remodeling
Renovation
638-7878
Lic. #C12004

Bikram Yoga
Stretch, strengthen & stimulate mind & body.
All ages and levels.
Please call for class schedule
637-5700

North Shore Pumping
Cesspool & Septic Pumping
Complete Plumbing
Services, new & repairs
Lic. & insured #25567
638-0900 • 291-5089

B.E. CONSTRUCTION
Dumptruck & Backhoe
Services
Equipment, dirt, rock,
green waste hauling
in and out
DEMOLITIONS
BRUCE ESCHE 783-9510

SHIATSU • LOMI
Aromatherapy
Milica Barjaktarovic
Lic # MAT8348
351-0848
HumanRemodeling.com

SEPTIC SYSTEM
QUESTIONS?
Free Initial Consultation
Bear Engineering
Nathan M. Toothman P.E.
(808) 754-3579
www.BearEng.com

GERMAN CAR SERVICE
Professional-Qualified
Technician
Call Gary
637-6800

Next Issue - Jan. 25, 2012
Deadline Date-Jan. 12, 2012

SUBSCRIPTION RATES

If you live outside the North Shore area on Oahu, neighbor islands, or the mainland, you can subscribe to the North Shore News. Our annual subscription rate is \$35 for 25 issues delivered by standard bulk mail (2-3 weeks), or \$55 for 25 issues delivered by first class postage (3-5 days). Call our office for payment information at (808) 637-3138.

HOW TO CONTACT THE NORTH SHORE NEWS

Letters to the Editor, and other items submitted for publication consideration may be sent to us via:

MAIL: P.O. Box 1117, Haleiwa, HI 96712

E-MAIL: NShoreNews@aol.com

FAX: (808) 637-8862

PHONE: (808) 637-3138

For Advertising Rates,
call
637-3138

CLASSIFIED ADS

hawaiiweddingminister.com

342-3969

31 years experience

Offshore Plumbing, LLC

Commercial • Residential
• Septic • Plumbing Design

Mike Duenas, owner
Lic #C28113
630-1407

Fax: 637-7870 • Office: 371-3451
offshoreplumbing@yahoo.com

BOBBY'S BODIES

Tuesday evenings at 5:00 p.m.

• Body Toning

Friday mornings at 9:00 a.m.

• Cardio Pump/Fat Burner

For more info: call Bobby, owner of BOBBY'S BODIES at 637-4150

Lisa Carley Skin Care

637-9400

lisacarley.com

67-292 Goodale Ave. #104
Waiialua Shopping Center

Your Clean Home

Specializing in residential/vacation homes & property management.

Experienced/reliable and affordable. Green cleaning safe for your family and our planet!!!

808 638-0262 or 779-6604

THE LAWN RANGER

Lawn Maintenance
no yard too hard
no lawn too far gone
We mow betta
258-6439 Dan Fatchett



Marianne Abrigo, Properties

Specializing in -
North Shore
Real Estate

Ask for our list of available properties and/or a free market analysis.

Marianne M. Abrigo

"Realtor since 1974"

Office **637-3511**
Fax **637-0777**
Email mabrigo222@aol.com

FOR SALE

LaPatrie guitar,
excellent condition
\$200. 223-5955

**Grow your own groceries
North Shore Backyard
Gardening Workshop Series**

Want to save money and be more self-sufficient by growing your own garden? Tried gardening in the past and had trouble getting things to grow? The Oahu Resource Conservation and Development Council, with financial support from Pioneer Hi-Bred, is presenting a series of workshops to help North Shore residents increase their gardening skills and learn how to garden successfully on their part of the island. Topics will include Understanding your Soil, Container Gardening, Plant Pest Diagnostics, Chicken farming, Easy Vegetables and Herbs, Worms and more. Each participant will receive free giveaways and information to take home. Workshops will be held every 4th Saturday from 9 to 11:30 a.m. and will be taught by local experts, including Master Gardeners, University of Hawaii Extension agents, local farmers, and US Department of Agriculture employees. The series will run January through May at Pioneer's office in Waiialua, 67-172 Farrington Hwy. (behind Waiialua High and Intermediate School). A \$4 donation is requested for each workshop, which will go to a North Shore organization of your choice. Space is limited, so please call or email to reserve your spot. Contact Ann Bryant or Jean Brokish at (808) 622-9026 or ann.bryant@oahurcd.org for more information, or go to our website, oahured.org, for a complete schedule.

BRRRR

It's been cold lately!
Perhaps you have an extra blanket or two, used or new to donate to our homeless neighbors.
Drop off blankets at the North Shore News office
A Warm Mahalo
637-3138

FOR RENT

Gmd Fl. Professional/retail
Space 466sq'/\$1,382.75/month
Xcel Bldg. Haleiwa 779-7779

HELP WANTED

BUSSERS/SERVERS

Pizza Bob's in Haleiwa is looking for BUSSERS/SERVERS. Experience preferred. Apply in person at 66-145 Kam. Hwy.

COOKS/KITCHEN HELP

Pizza Bob's in Haleiwa is looking for kitchen personnel. Experience preferred, but will consider training the right people. Apply in person at 66-145 Kam. Hwy.

**Retail Sales
Surf & Sea**

Hawaii's Ocean Sports Headquarters is always looking for hard working, energetic people to become a part of our sales team. Good pay, bonus, benefits. Ocean sports experience and/or bilingual a plus. Apply in person daily 9am-7pm
62-595 Kam. Hwy., Haleiwa

MISCELLANEOUS

NS Seventh Day Adventists
Saturdays 9:15-12:15
67-174 Farrington Hwy.
(WUCC, next to WHS)
Info: 638-8209

JMJT St. Jude
Thank you for prayers
answered. LA

If you shop at
PX, BX, etc..., I do too.
Call 636-5826.
You drive - I buy the gas!

Music, wellness, gardening, food, eco-sustainability, kids area, yoga, education, art & more @ Optimysstique Festival on the Gora Farm 66-351 Paalaa Rd.
For schedule visit
optimysstique.com 637-2117

**E Kokua Kakoue Malama
I Kawaiola**

www.cleanwaterhonolulu.com
Environmental Concern Line
527-5091
City & County of Honolulu

Recycle Plastic

Caps & Lids

and help save seabirds

Recycle caps & lids are being accepted at:
Goodwill Industries of Hawaii

Wahiawa
823 California Ave.
Monday-Sunday
9 a.m. - 5 p.m.

For information:
www.b-e-a-c-h.org/recycling

REUNIONS

The NSN is happy to publish your school or family reunion Free of charge.

Email your announcement to
NShoreNews@aol.com.

Ho'ola Like

"Healers Working Together"

Waikiki Health Center's North Shore Clinic

Majority of Insurance Plans Accepted

No Insurance • Sliding Fee Available

Open Tuesdays and Thursdays

8:30 am to 3:30 pm

Walk-ins are Welcome

Emerson Hall, Queen Liliuokalani Church

66-090 Kamehameha Highway, Haleiwa

Call 284-5212 for an appointment.

**North Shore
Farmers Markets**

Haleiwa: 9 a.m. to 1 p.m. Sundays, at traffic signal on the old Kamehameha Hwy at the bypass road.

Waiialua Sugar Mill: 8:30 a.m. to noon Saturdays & Wednesdays 4:40 p.m. to 7:00 p.m.

North Shore Country Market: 8 a.m. to 2 p.m. Saturdays, Sunset Beach Elementary School, 59-360 Kamehameha Hwy.

Laie: 11 a.m. to 2 p.m. June 24, July 8 and 23, Brigham-Young University-Hawaii, 55-220 Kulanui St.

**Please Report Stranded
Sea Turtles**

Call 983-5730 • Mon.-Fri., 7am-4pm
288-5685 pager wkends, holidays
587-0077 and after hours
Suspected Law Violations
541-2727 or 800-853-1964
NOAA Fisheries DLNR-DOCARE

**Keep it Country
To report ILLEGAL VACATION
RENTALS**

call 768-8159 or 768-8118
You will remain anonymous
**Illegal Vacation Rentals
are ruining the North Shore**
www.savenorthshoreneighborhoods.com

CLASSIFIED ADS

BEACH CLEAN UP

Chun's Reef – 10 a.m.
637-2211
Last Saturday of every month
adoptabeachhawaii.org

IGREJA EVAN. BRASILEIRA

Domingos 10:00 am
Quartas 7:30 pm
Sextas-Culto de Oraçao 7:30 pm

Voce e o nosso
convidado especial

Behind Hale'iwa Post Office
637-5566
Pastor Luiz • 638-2212

**Save Sea Turtles
Use Reusable Bags
www.b-e-a-c-h.org**

OFF da ISLAND

Are you leaving Oahu on vacation or business? Do you live on a neighbor island, the mainland or foreign country and subscribe to the North Shore News? Try send us a photo of someone in front of a sign or landmark holding a copy of the NSN. Email your photo along with the person or persons' name, community of residence, telephone number and photo location to: NSHoreNews@aol.com. Or, mail to OFF da ISLAND Photo, North Shore News, P.O. Box 1117, Hale'iwa, HI 96712. We cannot return photos so please send us a copy. Photos received become the property of NSN. Preference and priority will be given to emailed photos.

Hawaiian Humane Society (808) 946-2187

Animal Rescues &
Investigations 356-2250
Dog Licensing 356-2227
Donations & Gifts 356-2221
Education 356-2206
Pet Adoptions & Lost & Found
356-2218

Statewide Hotline for Litter

1-888-592-2522

Callers need to provide:

1. License plate number
2. Make and model of vehicle
3. Date and time and location
4. What was thrown/blown



Business Services Center
Fast & convenient fax, copy, scan, computer/internet, laminate, etc.
Across from Haleiwa post office.
North Shore Chamber of Commerce
637-4558 or 342-8557

FREE BASIC WOOD CARVING CLASS IN WAIMEA VALLEY

Ka Aha Hui Naauao presents its third year of free wood carving classes in Waimea Valley held every Sunday from 9am to 1pm. All tools and wood are supplied free to the class is first come first served please (seating is limited) call 808-292-4292 or e-mail bhelemano@aol.com. for info: www.huinaauao.com



COMMUNITY CLASSIFIED ADS

Heading: (circle) For Sale - Rentals - Services - Lost/Found - Help Wanted - Misc.

Issue Date: _____

Name: _____

Contact No.: _____

Non-business ads – \$4.00 per line, no minimum
Business ads including services – \$6.00 per line, minimum 3 lines
Lost/Found ads – no charge up to 3 lines
Box ads – \$40.00 per column inch

ADS CAN BE DROPPED OFF IN MAIL SLOT, MAILED, FAXED OR EMAILED (NSHorenews@aol.com) TO NORTH SHORE NEWS. DEAD-LINES ARE THE FRIDAY AFTER OUR PREVIOUS ISSUE (THURSDAY IF FRIDAY IS A HOLIDAY). MAKE CHECKS PAYABLE TO: NORTH SHORE NEWS, PHONE ORDERS WITH CREDIT CARDS ONLY.

Print your ad clearly in the space below by using proper spacing and punctuation. We reserve the right to refuse any advertisement with full refund.

Non-Business Personal Ad
\$4.00 per line • No minimum
Includes tax.

Business Ad
\$6.00 per line (min. 3 lines)
Includes tax.

\$4.18																			
8.37																			
12.56																			
16.75																			
24.94																			
25.13																			

\$18.89
25.13
32.45
39.79

North Shore News P.O. Box 1117 Haleiwa, HI 96712
Ph: (808) 637-3138 • Fax: (808) 637-8862



MALAMA MARKET HALEIWA:
OPEN DAILY 7 AM-9 PM
808.637.4520

MALAMA MARKET MAKAKILO:
OPEN DAILY 6 AM-10 PM
808.672.9955

Valid Dates:
1/11/12-1/17/12

Korean Pear **\$1.29**
PER LB.



Häagen-Dazs Ice Cream **2/\$6**
Selected Varieties,
14 oz.



Coca-Cola **2/\$2.22**
Selected Varieties,
2 Ltr.



Yoplait Yogurt **10/\$7**
Selected Varieties,
4-6 oz.



choice Certified
Angus Beef®
Tri Tip Roast
or Steak **\$3.99**
PER LB.



Spam Luncheon Meat **2/\$5**
Selected Varieties, 12 oz.



Fresh Baked **\$2.29**
French Bread EACH



EZ Peel Shrimp, **\$5.99**
41/50 ct.
Previously Frozen PER LB.



Purex Liquid
Laundry Detergent
or Crystal
Fabric Softener **2/\$7**

Selected Varieties,
28-72 oz.



8 Piece Fried Chicken **\$8.99**
2 Thighs, 2 Breasts,
2 Drumsticks, and 2 Wings EACH



Bounty Basic
Paper Towel **\$5.99**
6 Rolls



Tombstone Pizza **2/\$9**
Selected Varieties, 12"

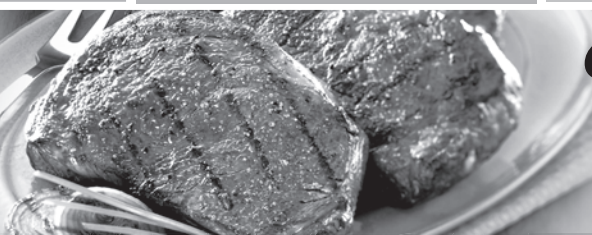


Heineken, Corona,
Sierra Nevada, or
Samuel Adams **\$13.88**
12 Pk. Bottles



THURSDAY

INCLUDES:
7-8 oz. Steak
Rice • Tossed Salad • Drink



Grilled Steak
LUNCH
\$6.99

Hawaii Beverage Fee
Hawaii Beverage Fee of 1¢ per can or bottle will be added to purchase price at checkout. An Additional Hawaii Deposit fee of 5¢ will be charged for all specially marked beverage containers.

Limit five units (mix/match) per purchase, unless otherwise specified. We reserve the right to limit quantities. No sales to dealers. Prices plus applicable state tax. Hawaii EBT cards welcomed.