



**“E Ala Na Moku Kai Liloloa”**

**Budget Shortfall  
Curtails the Work of the  
Humane Society**

See page 5



NORTH SHORE NEWS August 21, 2013 VOLUME 30, NUMBER 17



**The pride of Manu O Ke Kai**

Once the professional surfing circuit quiets down—the North Shore becomes alive with the Hawaiian sport of canoe paddling. The humble Haleiwa canoe club, Manu O Ke Kai, have been in the winning circle for many years in Na Ohana O’Hui Wa’a canoe racing association. For the last 2

years—the 15 year old girls crew are being affectionately called “The Pride of Manu O Ke Kai”—and for good reason:

The 2012 season, then 14 yrs old—the girls were top 3 all Hui Wa’a races, took 2nd/Silver in the Hui Wa’a Championships and placed 3rd/Bronze in the State



*Continued on page 19*

PRE-SORTED  
STANDARD  
U.S. POSTAGE PAID  
Honolulu, Hawaii  
Permit No. 1479

Haleiwa, HI 96712  
66-437 Kamehameha Hwy., Suite 210

**PROUDLY PUBLISHED IN  
Hale’iwa, Hawai’i  
The Surfing Capital  
of the World!**

O  
F  
F  
d  
a  
I  
s  
l  
a  
n  
d



### ...in Las Vegas, Nevada.

North Shore friends Ku'ulei Canencia of Waiialua and Brandee Heder of Kahuku had the best night of their lives at the One Direction Concert held at the Mandalay Bay Hotel. Towards the end of the evening, the girls packed their bags and glanced at the North Shore News to remind them of the good times on Oahu's beautiful North Shore. For more information on the Off da Island campaign turn to page 23.

**We've Moved**  
66-037 Kam. Hwy., Ste. 3  
Haleiwa, next to Growing Keiki

**Saccoccio & Lopez**  
ATTORNEYS AT LAW  
*Serving Haleiwa since 1984*

*Bankruptcy  
Personal Injury • Criminal Law  
Landlord/Tenant  
Traffic Offenses • DUI*


**Family Law**  
*Adoption • Custody • Divorce  
Paternity • Guardianship  
Deeds, and Wills*

Notary Public

**637-7611**  
VISA/MC Accepted

*Paul & Nita*

**The Hale'iwa Family Dental Center, Ltd.**



presents  
**"Comfort Dentistry"**  
including—

- Relaxation Glasses
- Television Glasses
- Caring Staff
- Special Medication to help you relax
- Laser Cavity Detection
- New Patients Welcome!

Your teeth are much too important to neglect.

**Call: 637-9652**  
for your reservation

We're conveniently located behind First Hawaiian Bank  
in the heart of Hale'iwa.



**HAWAII POLO CLUB**  
SINCE 1963

**“EXPECT A MIRACLE BENEFIT”  
OPENING DAY AT POLO  
SEPTEMBER 1ST, 2013**

**For artist JIM ERICKSON and his wife MARGO GOODWILL**  
(To assist with Jim’s medical expenses for Acute Myeloid Leukemia)  
*A portion of all entry fees and “Jim” drinks will be donated to the artist*

**HEADLINING POLO MATCH: INDIA VS HAWAII**

**GATES OPEN AT 11AM - GAMES START AT 2PM - \$10 ENTRY**



## **IN CONCERT Master of Folk and Bluegrass PETER ROWAN Special Guest: Ledward Ka’apana**

Grammy-award winner and six time nominee, PETER ROWAN, [www.peter-rowan.com](http://www.peter-rowan.com) makes his Oahu debut, with two shows.

1963 found Rowan, joining the legendary founding father of bluegrass music-BILL MONROE, as singer-songwriter and guitarist. By Monroe’s own admission, Peter sounded a lot like him.

When the two harmonized, they reached, “heavenly heights.”

In the late 60’s & 70’s Peter formed the seminal folk-rock band, SEATRIN. Then on to cult status, OLD & IN the WAY, with Grateful Dead’s, JERRY GARCIA, and mandolinist DAVID GRISMAN. Also, with Grisman and Fiddle player, extraordinaire, Richard Greene, (Seatrain): MULESKINNER

Embarking on an distinguished, solo career, re-

leasing several acclaimed records. Also teaming up with phenomenal bluegrass guitarist, TONY RICE, forming Peter Rowan’s Bluegrass Band.

**7:30 p.m. Friday, Aug. 23**  
**Atherton Performing Arts Studio, Hawaii Public Radio, 738 Kaheka St. 955 8821. HPR Members: \$25. Non members, \$30**

**8 p.m., Saturday, Aug. 24**  
**Surfer the Bar, Turtle Bay Resort, Kahuku. \$25 adv., \$30 door, [www.surferthebar.com](http://www.surferthebar.com) 447-6506, 293-8811**

Send us your “Letter to the Editor” on any topic in the NSN publication, or any community concern.

Letters 200 words or less preferred.

Include first & last name & contact phone number.

[NShoreNews@aol.com](mailto:NShoreNews@aol.com)

Tickets available at: [www.brownpapertickets.com](http://www.brownpapertickets.com)  
HPR Studios (Atherton performance only). Surf 'n' Sea Haleiwa (Turtle Bay performance only)

A MUDMAN PRODUCTION

柔 **arte suave**  
the gentle art

術

**JIU-JITSU  
CLASSES**



men women kids

"The Jiu-Jitsu that I created was designed to give the weak ones a chance to face the heavy and strong. Always assume that your opponent is going to be bigger, stronger and faster than you; so that you learn to rely on technique, timing and leverage rather than brute strength"

Helio Gracie

66-437 Kamehameha Hwy Haleiwa, HI 96712  
(back of North Shore News/Post Office)

for more info  
[www.NorthShoreJiuJitsuClub.org](http://www.NorthShoreJiuJitsuClub.org)

808-799-7215  
[NorthShoreBJJ@Gmail.com](mailto:NorthShoreBJJ@Gmail.com)



**Na Wahine O  
Ka Hula Mai Ka  
Pu'uwai Hula  
Halau**

will be presenting a hula program  
At the Waialua Bandstand  
Sunday, September 1st  
4:00 - 5:30 p.m.

Come relax and enjoy  
this wonderful program.  
[www.waialuabandstand.com](http://www.waialuabandstand.com)

# Generations

2013 Summer Concert Series

Waimea Valley · Pikake Pavilion Lawn · 11 AM - 4 PM



Saturday, August 31  
**THE FUTURE**

Kaiholu · Abrigo 'Ohana · Waipuna · Maunualua

Presale Tickets Available At  
Na Mea Hawaii - Ward Warehouse  
Or Online At [WAIMEAVALLEY.NET](http://WAIMEAVALLEY.NET)

Tickets	Adult	Child or Senior (65+)
Presale	\$15	\$8
At the Gate	\$20	\$10



**WAIMEA VALLEY**

Call: (808) 638-7766



**Council Chair**  
**Ernie Martin**  
 Serving You in District 2

**Budget Shortfall Curtails the Work of the Humane Society**

Mayor Kirk Caldwell claims that his administration is facing a \$26 million shortfall in the city's budget and recently warned the public that there will be some adverse impacts on City services. One such development is the reduction in the Hawaiian Humane Society animal-control activities. The organization, now celebrating its 130th year, has had contracts with the city since 1915. It was recently denied an additional \$800,000 for its \$2.3 million annual contract with the City.

Without the additional funds, the Humane Society said it would be unable to deliver many of the services it has provided in past years. Such services include picking up strays, dealing with complaints on cats and barking dogs, and providing law-enforcement information. City funding is now used to pay the Society for handling 21,000 stray animals, 22,000 micro-chipping procedures, 3,500 reports of loose dogs and 5,000 lost-and-found reports. The Humane Society had previously used resources meant for educational outreach to make up the funds needed for these activities, but this year said they could no longer afford to do so. The Society will continue to shelter pets, its core mission outside of the city contract, and fulfill its contract duties of responding to loose, aggressive dogs and animal emergencies, but it will no longer perform some services such as responding to barking dogs without the additional funding. It addressed 1,700 of such complaints last year alone.

The Mayor contends that it was the City Council's failure to approve a hike in the city's fuel tax that is largely responsible for the deficit. A more truthful explanation for the shortfall must account for the fact that the mayor's original budget was based on the false assumption that the Council would agree to a fuel tax increase. His only significant revenue generating proposal was a five cent a gallon increase that would have had Hawaii drivers paying the highest gas tax in the country. Due to the larger-than- anticipated collective-bargaining agreement with city police officers, the administration must now find alternative funding sources. While the Council stands ready to work with the Mayor on his initiatives to generate more revenue or consider a plan to reduce the cost of services, the Council is highly unlikely to ever rubber stamp a tax increase or condone abrupt cuts in services such as the reduction of funding to the Humane Society

as a way to make ends meet.

Rather than tax increases or cuts in services, the city may have to consider additional pet fees that could help offset costs. There could a campaign to increase the number of legally licensed dogs which only accounts for an estimated 12% of dogs on Oahu today. The current license fee is \$10 for 24 months. User fees have long been viewed as a more equitable way to distribute the cost of government. Now is the time to be creative in our quest to preserve core services and avoid across the board tax increases.



*The Hawaii Humane Society has longed helped orphaned pets like this mixed breed rescue puppy fortunately placed in a good home.*

**SIX SPECIAL NIGHTS**

<b>MONDAY</b> \$2.95 BEER BOTTLES & DRAFT	<b>TUESDAY</b> \$5.00 OFF PIZZA REGULAR OR LARGE	<b>WEDNESDAY</b> SALAD NIGHT 1/2 OFF SALADS
<b>THURSDAY</b> \$3.95 NIGHT \$3.95 SLICES, SALADS, MAI TAI'S, WINE & BEER	<b>PIZZA BOB'S</b>	
	<b>FRIDAY NIGHT</b> \$7.50 BURGER & FRIES	<b>SATURDAY</b> \$4.50 NIGHT \$4.50 SLICES, SALADS, MAI TAI'S, WINE & BEER

Dine In Only - 4:00 PM Until Closing - Haleiwa Town Center - 637-5095

**PLUS \$2.00 Off with this Coupon**  
 Some Restrictions Apply. See Restaurant for Details.  
 When Ordering Regular Priced Items. Good Anytime. One Coupon Per Person.  
 Can Not Be Combined with Other Discounts. Expires 09/30/2013.

## Nistula Technologies

An American (Hawaii Based) Corporation

To Register Today,  
please contact us as follows:

CALL OUR TOLL FREE NUMBERS:

1 (800) 517-8136

1 (855) 647-8852 (NISTULA)

Timings: 9:00AM to 7:00PM HST

E-MAIL:

contact@nistulatechnologies.com

registration@nistulatechnologies.com

Website: www.nistulatechnologies.com

Disclaimer

The policy of Nistula Technologies LLC prohibits itself and its authorized representatives from initiating calls to anyone. All calls for assistance and support will be made by the client through the toll free numbers provided on www.nistulatechnologies.com. This is to prevent any probable instance of a client being scammed by anyone using the Nistula name fraudulently. Do not accept such calls. In such a case, hang up or disconnect the call and report it immediately to us through our "Contact Us" page on www.nistulatechnologies.com or send an email to compliance@nistulatechnologies.com



MENTORING COACHES



QUALITY  
EXPECTATIONS



SERVICE ACHIEVEMENT  
AND EXCELLENCE

IS YOUR COMPUTER RUNNING EXTREMELY SLOW?  
DOES YOUR COMPUTER TAKE ALL THE TIME IN THE WORLD TO START?  
DO YOU HAVE A LOT OF QUESTIONS, THAT YOU NEED ANSWERS FOR?

**CALL FOR A FREE CHECK UP & ASK ALL YOUR QUESTIONS!**

Qualified technicians will assist and help you solve the problems with your computer that are nagging you every day and also tell you how to avoid them. We also offer regular maintenance services and one – stop solutions to all your queries and problems.

Trained mentors/qualified coaches offering personalized support and assistance to those desiring additional computer skills, from simple letters, greeting cards to presentations, spreadsheet, and web/internet compliance as they journey toward self-reliance and celebrate their success in understanding today's computer technology.

**WE HELP YOU ACHIEVE A LEVEL OF SKILL AND INDEPENDENCE.**



The North Shore Chamber of Commerce's **Membership Meeting** will be held Wednesday, August 28th 8am at Haleiwa Joe's Seafood Grill. The guest speaker will be Dr. Ted Radovich, PhD, who teaches Sustainable and Organic Farming Systems at UH-Manoa's Department of Tropical Plant and Soil Science. Dr. Radovich's research centers on "understanding how crop yield and quality can be optimized in agricultural systems that reduce reliance on conventional chemical inputs and increase use of ecological farming practices." The topic of his talk will be "Sustainable Agricultural Practices." A continental breakfast will be served: members \$5, non-members \$10. Call 637-4558 to RSVP by August 26th or for more information.

## SALON LA SIRENA

Grand Opening Special  
Full Highlight & Haircut \$100

First time clients


A new eco friendly,  
Green Salon on the North Shore

Owner Gina Walker  
Haircut, Highlight and Color Specialist  
Hairdresser to the Stars from  
Malibu, CA. 20 yrs. experience.

Call for a free consultation  
Shop 637-6869  
Cell 375-3984




Haleiwa, Waialua residents getting a meal at the Waialua Community Association (WCA) aka Haleiwa Gym after Hurricane Iwa Nov. 23, 1982. Phone courtesy of Honolulu Advertiser. The WCA has always been a leader in Disaster Preparedness and Response in our community. They became a Disaster Response Center after the floods in Haleiwa Dec. 2008 and are also a Red Cross Shelter. Thank you WCA!



**Polynesian Treasures**


*Hawaii's largest selection of Polynesian handicrafts and Hawaiian inspired gifts.*

North Shore Marketplace \* Haleiwa, Hawaii  
Open daily from 10 am \* (808) 637-1288



**Where did the delicious DOUGHNUT come from?**

*"Da Best"*



Doughnuts may have been brought over by Dutch immigrants who were making their traditional "olykoeks" or "oil cakes".

An American captain Hansen Gregory invented the hole in the middle because the center would usually remain uncooked. This technique allowed the doughnut to be cooked well all over.

Doughnuts became a hit since the 1934 Chicago World's Fair where it was called the "Food Hit of the Century"

**Open Daily 5:30am - 7:00pm**  
**(808) 637-9795**  
**www.pkbsweets.com**



**Video - Media**  
**Need Web Video**  
**Ask About Our**  
**Special Rates**

**808- 781- 2535**



**Representative  
Lauren  
Matsumoto  
Serving You in District 45**

The Homelessness Committee of our North Shore Neighborhood Board #27 met earlier this month with community leaders, business owners, and Neighborhood Board members to discuss the homelessness conditions we're experiencing in many areas of our district. Among the items on the meeting agenda was an update on resources and support systems that are available to homeless individuals and families on the North Shore.

Recently, The Institute for Human Services, Inc. (IHS) expanded their homelessness outreach to the North Shore. IHS is a non-profit organization which provides temporary shelter and assistance in developing skills for employment services to those who are homeless. IHS collaborates with other outreach teams to make the best use of scarce resources. The IHS structure of outreach targets 3 key areas: Housing, Employment, and Access to Treatment for those who need it. This methodical and logical approach is making a difference in preventing and ending homelessness in Hawaii and in our communities. Learn more about what they do and how you can get involved by visiting their website at IHSHawaii.org or call 447-2800.

Another recent development is the establishment of our North Shore Neighborhood Board #27 Parks Committee. The purpose of the Parks Committee is to address community concerns relating to City and County Parks and working with our City and State officials to keep our parks safe and accessible for all North Shore residents. If you would like to get involved with the North Shore Neighborhood Board #27, or would like to address your concerns to them, or receive monthly meeting notices and agendas, visit their website at [www1.honolulu.gov/nco/nb27/index.htm](http://www1.honolulu.gov/nco/nb27/index.htm). I hope to see you at one of our monthly meetings. Meetings are held on the 3rd Tuesday of the month at the Haleiwa Elementary School Cafeteria.

Having these committees at work for the betterment of our community is a powerful "force multiplier" for producing and maintaining a great place to live. Working together, we can accomplish many good things!

As always, I appreciate hearing from you and seeing you in the community. If you have a concern or question, you can reach me by email at [RepMatsumoto@Capitol.Hawaii.gov](mailto:RepMatsumoto@Capitol.Hawaii.gov) or call me at my office at 586-9490.



**Virginia Abshier, MD**  
Internal Medicine

Now in Haleiwa Full Time  
Monday - Saturday by appointment  
637.SICK (7425)

"Now Accepting New Patients"

Ali'i Beach Medical Group  
66-214 Haleiwa Road Haleiwa, Hawaii 96712  
office hours by appointment after hours emergency number 524.2575



Come and get acquainted  
with our Family of Doughnuts!

- \* Sugar
- \* Glazed \* Doughnut Holes
- \* Twist

Try 6 of any choice of doughnuts and save 10% off or buy a dozen of 2 or more different types of doughnuts and receive a 15% discount . . . and to boot, take home a hot, golden Sada's Malassada FREE!

For "Out-Of-This-World" taste and flavor, pop it into our microwave oven before you leave.

Offer good from August 21st to September 3rd

Open Daily 5:30am - 7:00pm  
(808) 637-9795



[www.pkbsweets.com](http://www.pkbsweets.com)





**Country Talk Story  
with  
Choon James**

**City Hall's Fiscal Priorities**

Local residents are not happy about rising electricity, sewer, car registration and other expenses. Even food prices are escalating.

This budget year, Mayor Kirk Caldwell requested increase on the gasoline taxes.

Fortunately, the city council made it clear his request would be dead on arrival and they would not agree to increasing property taxes as well.

I also appreciate our City Council member Ernie Martin and Budget Chair Ann Kobasyashi for implementing a common sense approach to expenditures and questioning rather than just going through the status quo.

I've recently paid more attention to the city budget expenditures because the city wants to seize my commercial lot in Hauula. I do not oppose their intent to build a new fire station less than two minutes from the existing one. But I vehemently oppose their lack of due process and transparency.

It wouldn't matter if I donated the land to them, but they have to follow the rule of law. The residents who live next to this proposed site were never consulted in the environmental review process. Residents are of the opinion that the city would not behave this way in Kahala.

There are a lot of irregularities and finagling involved in this process. It's ugly.

The city's first site choice for a relocation site was a 1.65 acre beachfront parcel! Long story short, the city purchased the Lot 64 of 20,297 square feet at 54-290 Kamehameha Highway, Hauula, 96717 (next to the old KFC) on April 19, 2010. This City-owned Lot 64 is very adequate for a typical fire station in Oahu.

For example: The new McCully-Moiliili Station, built with an estimated price of \$4.6M, sits on 19,555 sq. ft. lot and was dedicated on April 1, 2010. The Wahiawa Fire Station that serves a much denser population than rural Hau'ula sits on 20,000 sq. ft. lot. The Kaneohe Fire Station sits on 20,075 sq. ft. lot. The Ka'a'awa Fire Station sits on 15, 493 sq. ft. lot. The Makaloa Fire Station by the Pan Am building on Kapiolani Blvd sits on 18,953 sq. ft. lot. This average lot size holds true on the mainland as well. Metropolitan West Seattle, Washington deems 15,000 sq. ft. to 20,000 sq. ft. parcels as customary for their fire stations.

Why then, is city fixated on seizing our adjacent Lot 65 for an additional 20,300 square feet? Their Environmental Assessment Report for this proposed

relocation project stated there would be no increase in service area or personnel.

Why then, a Taj Mahal fire station in rural Hau'ula on twice the lot size and triple the costs of an average fire station? (The Hauula's projected cost is \$13M.) Why? As one Hau'ula kupuna said, "do money grow on trees?"

Recently, the city also dispatched a maintenance crew all the way from Halawa Maintenance Yard to seize my two protest signs on Lot 64 in Hauula. The signs: "You-Tube: Eminent Domain Abuse Hawaii" and "Hawaii Eminent Domain Abuse – Who's next?" was impounded and taken away without our knowledge. I was told I could file a claim for my damaged signs from the City Corporation Counsel. Easy as that!

Money does grow on trees, at least, at City Hall.

*Choon James has been a real estate broker for over 20 years. She hosts "Country Talk Story" on Olelo Television every Saturday at 5:00 pm on Channel 55. Choon can be reached at 808 293 9111 or ChoonJamesHawaii@gmail.com*



Call for daily specials

**840-0223**

Phone orders welcome

Come and enjoy some local kine grindz!!

Located next to Haleiwa Post Office

**SALON LA SIRENA**

An Eco Friendly Green Salon

Eco-Fin Organic Grand Opening Specials

Full Highlight & Haircut w/Style \$100

Mani/Pedi \$40

Michele Popek formally of NS Salon & Spa

723-1366 637-6869

Waialua Shopping Ctr. across from Jerry's Pizza

## Olakino Maika'i

(Good Health)

by Naty Camit Hopewell

### Stroke In Women: Part II

Part I discussed the symptoms and risk factors of stroke in women. It also discussed the difference between stroke and TIA ((transient ischemic attack) or "mini-stroke." To review stroke destroys brain cells and causes permanent damage but TIA does not destroy brain cells. However, TIA can recur and each event increases the risk of a future stroke. The symptoms of each are similar, so seek medical attention immediately since the longer a stroke goes untreated, the less effective the treatment. Strokes need to be evaluated and treated within 3 hours of the onset of symptoms.

Having a stroke can be devastating and require months of rehabilitation to regain the function lost. This is why you must be proactive in looking at your own risk factors and in preventing a stroke. According to the latest studies, the most effective way to prevent strokes is to keep your blood pressure as close to normal (120/80) as possible. How do you do this? 1) Stop smoking; nicotine narrows your blood vessels making them easier to be blocked. The narrow vessels also cause an increase in blood pressure. 2) Exercise strengthens your heart muscle resulting in lower blood pressure, contributes to weight loss causing a drop in blood pressure, and helps reduce bad cholesterol, which forms fatty deposits (plaque) on the blood vessel walls. Plaque can loosen from the walls, travel to the smaller vessels in the brain and cause blockage. 3) Decrease animal fat in your diet, which contributes to the formation of plaque. 4) If you are over 35 years old, obese, smoke and need birth control, use a non-hormonal birth control because estrogen in combination with these risk factors markedly increases your chance of stroke.

Remember that one in six women die of stroke compared to only one in twenty-five who die of breast cancer.

## No Need for Laser!

### Minor Skin Irregularities

Do you have brown spots, broken capillaries, clogged pores, blackheads, whiteheads, acne cysts, sebaceous hyperplasia, cherry angiomas, or skin tags?

Cutting edge technology can now treat these minor irregularities without laser or a scalpel!

Upon consultation the skin is cleansed and minor skin irregularities are identified. The procedure begins with a thorough microdermabrasion treatment to alleviate the stratum corneum (the outside layer of dead cells that contain: residual makeup, oils, and dead cells). Once the skin is cleared with microdermabrasion more minor skin irregularities may show themselves. The Skin Classic high frequency probe is used on the minor skin irregularities. This probe never enters the skin! It barely touches the skin and therefore is called the touch method. Treatment is very quick, a bit uncomfortable but worth it. You will immediately see results... no waiting and hoping! A demo can be provided to assure you that you are spending your money and time wisely! This treatment can be performed on the face, neck, chest, back, hands or arms!

There is some downtime. Wherever the Skin Classic comes into contact with the epidermis it will leave a little ding, It takes anywhere from 5-10 days before the skin is smooth again. During that time it is important to baby your skin with gentle products. You will also be sent home with aftercare instructions.

You will be scheduled for an affordable follow up microdermabrasion to monitor your skin's improvement and keep up with good maintenance habits.

Call 748-1448 for a free consultation from a Licensed Skin Classic & Face Reality Acne Specialist. Check out the treatments on Youtube [www.rnfaces.com](http://www.rnfaces.com) and for Face Reality [facerealityacneclinic.com](http://facerealityacneclinic.com)

# KUA AINA



*The Best!*

· IN HALEIWA ·

637-6067

· IN HONOLULU ·

591-9133

AT WARD CENTRE

HALEIWA · TOKYO · HONOLULU · LONDON

**Victoria's Sweets**  
your local snack supply

Party Favors for all Events

birthday parties - babys 1st - graduations - any event  
also available

\*Full Candy Shop set up      \*Crack Seed Candy bar

**(808) 636-7885**

FIND US ON FACEBOOK!

[WWW.FACEBOOK.COM/VICTORIAS.SWEETS.9](http://WWW.FACEBOOK.COM/VICTORIAS.SWEETS.9)

## In Loving Memory of Darla Mae Bragaw



### **Love... Darla**

*When you think of me, smile.....Look for the best in everything.....Share your heart and care for others in the best way that you know how.....A cool breeze, a single bloom, a rain shower or rainbow; See the beauty everyday in each and every little thing.....Let go of anger as a gift to yourself.....Have fun, be playful and laugh often to keep your spirit light.....Don't Worry about past or future, Live in the Moment, where there is all you need if you look closely enough.....Take care of Nature, as it gives so abundantly to us.....Find strength in faith, and trust that everything will work out just right....*  
*When you miss me look around....I'll be in all of God's beauty; still smiling and laughing with you...Patiently waiting to embrace you....*  
*Until We Meet Again.*  
*"A Hui Hou Kakou"*

Darla was born December 4, 1949 in Oxford, Nebraska to parents Lawrence Arden and Darlene Mae Sheneman. She passed away August 2, 2013. Darla leaves behind a loving husband of 22 years, James B. Bragaw. Devoted sons Stephen Rose and Berry Bragaw . Daughter-in-laws Teresa Rose and Jennifer Bragaw, a brother Dale Sheneman and her father Lawrence. She was also a loving Tutu to Joshua, Mike, Andee, Alison and Dulcie.

Darla spent her childhood in Oxford Nebraska, until moving to Loveland Colorado as a teenager. Darla has made the North Shore her home since 1973 where she fell in love with Mt. Kaala, Ali'i Beach and the Aloha spirit. She was a friend of many in the Hale'iwa community, and was beloved by the people at Jameson's where she spent the last 20 years serving alongside her husband, Jimmy B. She is known for her sweet positive nature that inspired all in her presence to live life to its fullest, laugh often and love others. Everyone that had the honor of knowing her was left with an imprinted heart making them a better person. She was loved by many that will miss her greatly.

***With Love....You're forever in our hearts.... Jim, Steve and Berry***



## Attention

# North Shore Oahu Visitors

HAWAII LAW REQUIRES A MINIMUM OF 30 DAYS FOR RENTALS IN RESIDENTIAL AREAS.

**IF YOU ARE PLANNING TO RENT A HOUSE OR A STUDIO ON THE NORTH SHORE FOR A PERIOD OF LESS THAN 30 DAYS, IT IS LIKELY THAT THE RENTAL IS UNPERMITTED AND ILLEGAL.**

### What can you do?

TO FIND OUT IF YOUR RENTAL UNIT IS PERMITTED OR NOT, CONTACT:

Colin Ishikawa: Ph.(808) 768-8160 Email: [cishikawa@honolulu.gov](mailto:cishikawa@honolulu.gov)

Todd Labang: Ph.(808)768-8166 Email: [tlabang@honolulu.gov](mailto:tlabang@honolulu.gov)

**PLEASE CALL NOW.**

**You will remain anonymous.**

To find legal accommodations on the North Shore, contact any of the real estate offices in Haleiwa and tell them that you want to stay **only** in a permitted vacation rental.

**Thank you for doing your part to keep the North Shore country!**

# 5th Annual North Shore OceanQuest Paddleboard Race & Ocean Triathlon

The 5th Annual North Shore Ocean Quest Paddleboard Race & Ocean Triathlon was held on Saturday, August 10th and commenced amidst overcast skies with frequent downpours of rain. However, the spirits of the competitors as well as the event staff volunteers were NOT dampened at all! A triple digit field of paddleboard racers (Waimea Bay to Haleiwa Alii) and ocean triathletes (2-person teams: SUP/Beach-Run/Ocean Swim from Sunset Beach to Ehukai to Waimea Bay to Haleiwa Alii) engaged in a thrilling and refreshing day of fitness, fun and fulfillment! BIG mahalo to the North Shore Lifeguard Association, Quiksilver Foundation, ASP Hawaii, Surf-N-Sea, Friends of Alii Beach, DMM Enterprises, and Aloha Surf Lifesaving for their major sponsorship. Other noteworthy contributors include: Clark Little, Haleiwa Joe's, Xcel, Hobie, Volcom, Hurley, Kona Red, Wendell Toki, North Shore News, Surf News Network, Banzai Productions, Makai Magazine, Zico Coconut Water, Love's, Wet Feet Hawaii, Diamond Head Landscaping, Dots, SUP Connect, Dole, Tamuras, Hawaiian Swell, and Mike Noguchi.

On behalf of the following volunteer staff, we'd like to thank everyone for their continued support and see you all next year! (Coordinating Volunteers) Kerry Terukina, Miles Harada, Sandra Fujimoto,

Shuki Kalanui, Kailani Haili, Keith Terukina, Betty Depolito, Faith Wenzl, Samuel Fisher III, Michelle Archuleta, Judah Oschner, Kenny Rust, Shawna Koch, Lea Hutchinson and Franco Tramontano: with the invaluable support of the two-dozen plus Country Crue and Haleiwa Surf Center alumni volunteers.

Respectfully Submitted,  
Kerry K. Terukina, Lead Coordinator

ANDREW LOGRECO	SUP STOCK 36:07
TRAVIS DESROCHES	UNLIMITED 44:20
JEFF PETERSON	UNLIMITED 50:49
MO FREITAS	UNLIMITED 39:06
ANDREW OZIMEC	UNLIMITED 51:01
KIONE DAHLIN	UNLIMITED 39.46
MICHAEL CHEAPE	PB STOCK UNDER 13 51:02
JIMMY FIT	SUP UNLIMITED OVER 13 40:07
TROE HERLONG	UNLIMITED PB OVER 12 W/R 52:19

WOMEN	
HAILE HARRISON	SUP UNLIMITED OVER 13 46:18
VANINA WALSH	SUP STOCK 13 NO RUDDER 51:13
IVY BLOOMFIELD	SUP STOCK 13 NO RUDDER 51:59
JENNIFER FRATZKE	SUP TOCK 13 NO RUDDER 52:38
CARON FARNHAM	SUP STOCK 13 NO RUDDER 57:07





PRESENTED BY



WAI KOKO  
COCONUT WATER

# STAND UP PADDLEBOARD RACES WAIKIKI

**DUKE'S "PADDLE WITH ALOHA" SUP RACE 9:00 AM START**  
**3 MILE OPEN OCEAN PADDLE**  
 EQUIPMENT: 12'6" and 14' and under.  
 AWARDS: Top 3 overall in men & women in board classes 12'6" and 14' and under.

**Sunday, Aug. 25, 2013 • Kuhio Beach, Waikiki**

**ENTRY FEES: Post marked by August 21, 2013**  
 \$35 for one individual event, \$50 for two individual events. Keiki (12 & un.) race FREE!  
 \$100 Relay Team (entry fee includes cost of 4 person team).  
 Entry fee includes lunch and t-shirt for each participant. Division winners will receive awards.

**DUKE'S KEIKI SUP PADDLE 10:30 AM START** *Every Keiki is a winner!*  
**300 METER PADDLE (INSIDE THE SURF ZONE)**  
 EQUIPMENT: All board sizes are allowed. Boards will be available if needed.

**LATE/BEACH ENTRY FEES:**  
 \$40 for one individual event, \$60 for two individual events. \$15 for Keiki beach entry.  
 \$120 Relay Team (entry fee includes cost of 4 person team).

**DUKE'S SUP CROSS RACE 11:30 AM START**  
**1 MILE COURSE (TWO LOOPS OF A 1/2 MILE COURSE)**  
 EQUIPMENT: Board limit is 12'6" max. Rudders and Foils are not allowed.  
 RACE SPECIFICS: Triangle course at Queens surf spot utilizing the channel and waves at Queens and/or Baby Queens. Paddlers will paddle through surf zone for added excitement. All competitors will race on the course at least twice (prelimes, 2nd chance race, and finals.)  
 AWARDS: Top 3 finishers in men, women, Jr. men (17 & under) & Jr. women (17 & under).

**MAIL TO:**  
 Make check payable to: Duke's Oceanfest.  
 Mail to: Duke's Oceanfest, 4494 Pahoa Ave., Honolulu, HI 96816.

**ADDITIONAL INFORMATION & RACE RULES:**  
 Please check our website: [www.dukesoceanfest.com](http://www.dukesoceanfest.com)  
 for additional course information and race rules.

**DUKE'S SUP-SURF RELAY RACE 1:00 PM START**  
**8 LAPS OF AN OFF-SHORE SPRINT COURSE**  
 EQUIPMENT: Board limit is 12'6" max. Rudders and Foils are not allowed.  
 RACE SPECIFICS: Four person multiple lap relay. Each team must include at least one female. Event limited to 20 teams. Each member must complete 2 laps of the course in relay fashion. One board used by all team members. AWARDS: Top 3 teams overall.



CLIP & MAIL

LAST NAME	FIRST NAME	LAST NAME (Relay member 2)	FIRST NAME
LAST NAME (Relay member 3)	FIRST NAME	LAST NAME (Relay member 4)	FIRST NAME
Mailing Address	City	State	Zip
E-mail Address	Date of Birth	Gender <span style="float:right">M F</span>	

<b>"PADDLE WITH ALOHA" RACE</b> <input type="checkbox"/> Men 12'6" <input type="checkbox"/> Women 12'6" <input type="checkbox"/> Men 14' un. <input type="checkbox"/> Women 14' un.	<b>SUP CROSS RACE</b> <input type="checkbox"/> Men <input type="checkbox"/> Women <input type="checkbox"/> Jr. Men <input type="checkbox"/> Jr. Women	<b>KEIKI RACE</b> <input type="checkbox"/> FREE ENTRY!	<b>RELAY</b> <input type="checkbox"/> 3 Male <input type="checkbox"/> 1 Female
<b>CHOOSE SHIRT SIZE</b> <input type="checkbox"/> S <input type="checkbox"/> M <input type="checkbox"/> L <input type="checkbox"/> XL Adult Shirt Size			

WAIVER: I know that swimming/running/paddling/canoing in the Duke's OceanFest is a potentially hazardous activity. I will not enter (nor will my child) unless I (he/she) is medically able and properly trained. I agree to abide by any decisions of a race official relative to my ability to complete the race safely. I assume all risks associated with participating in this event including but not limited to falls, contact with other participants, drowning, water exposure, the effects of the weather including high heat and humidity, traffic and the conditions of the road and ocean. Having read this waiver and knowing these facts and in consideration of your accepting my entry, I, for myself, my child, and anyone entitled to act on my behalf, waive and release any and all rights and claims for injuries and damages. I may have against and agree to hold harmless, Duke's OceanFest and Outrigger Duke Kahanamoku Foundation, ODKF Support, Inc., Pacific Rim Sports Inc., BOCA Hawaii, City and County of Honolulu, State of Hawaii, Department of Land and Natural Resources-Division of Boating and Ocean Recreation and all sponsors, their representatives and successors, from all claims or liabilities of any kind arising from my participation in this event, including pre- and post-race activities. I grant permission to all of the foregoing to use any photographs, motion pictures, recordings, or any other record of this event for any legitimate purpose.

Competitor's Name	Competitor's Signature (or signature of parent or legal guardian)	Date



## BANZAI NORTH SHORE WIRELESS

Coral reefs are among the Earth's most beautiful, ancient and complex ecosystems. Coral reefs play an essential role in sustaining life in the sea and coastal communities. Healthy coral reefs are some of the most biologically diverse and economically valuable ecosystems on earth, providing food, jobs, recreation, pharmaceuticals, coastal protection and other important functions to virtually everyone on the planet. The estimated value of having a pristine, clean Island chain is around 33 Billion dollars according to one biologist. There is a fast growing white bacterial infection of the coral reefs of Hawaii. The growth, identified by scientists at the U.S. Geological Survey as both a cyanobacterial pathogen, a bacteria that grows through photosynthesis and a fungus, is killing all the coral it strikes, and spreading at the rate of 1 to 3 inches a week on every coral it infects. It is alarming because the rate of growth is quick, killing off reefs in 2 months that have grown for 50 to 100 years. Kauai resident Biologist Terry Lilley has been studying and filming the disease for some time. Get informed through Lilley's website <http://underwater2web.com>. Mahalo to Terry Lilley for all his great work!

Hawaiian Island Creations will again be supporting the Jr. Pro events at the Duke's OceanFest where both men and women will compete. HIC has been a solid part of North Shore History since the shop opened in 1995. HIC started in 1971 as a bike shop in Honolulu and introduced surfboards in Kailua in 1974. Today they have seven locations on Oahu and one in Maui. A big congratulations as they are opening up two new stores on the Big Island. HIC has always been a huge supporter of surfing and has a great staff of super friendly people. Enjoy the ride. Mahalo HIC!

The Duke's OceanFest, August 17-25th, will also have Pro Longboarding for men and women and a Pro Tandem event through the ITSA, International Tandem Surfing Association. If you want to learn to tandem there are free sessions, check [www.dukes-oceanfest.com](http://www.dukes-oceanfest.com) for info or [bearswave.com](http://bearswave.com)!

Turtle Bay's Talk Story Series will be doing interviews with Film makers then showing the films afterwards. They are all great stories for great causes, raising money for non-profits. The series is 6 weeks from September 4th through October 9th Wednesday nights at 7:30 in Surfer the Bar. The first is World Champion surfer Shaun Tomson & the film "Bustin' Down the Door." Legend surfer Clyde Aikau

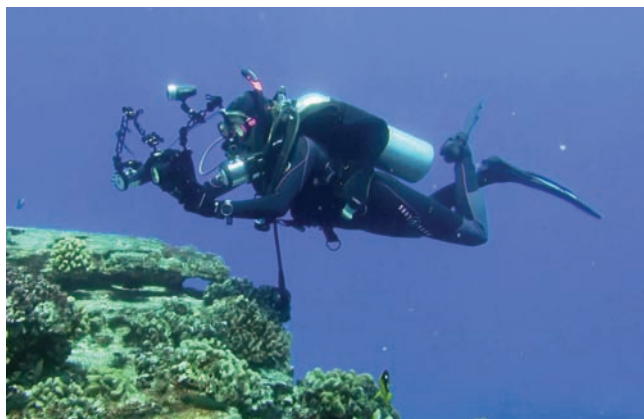
with Rodney Mullen with "Hawaiian: The Legend of Eddie Aikau" will be there. Also famous film maker Don King with his heart breaking movie "A Beautiful Son" will be featured on September 25th. For more information <http://turtlebaysurf.com/surferthebar/upcoming-events/> and [info@northshorewatershed.com](mailto:info@northshorewatershed.com).

The North Shore has fantastic artists, one of them Christine Pagano. Pagano is know for her sea glass jewelry, fantastic wood sculptures and her eye for the beautiful. She explores the tumbled perfection of sea glass. Glass that had a purpose, then is destroyed and again turned into beautiful objects. Her collection "Full Fathom Five" a collection rich and strange is world renowned. Christine Pagano has a love relation with the Ocean, she creates and it creates her. "I can't think of a time in my life when I wasn't making art of some kind," she says. "This collection, Full Fathom Five, is a full-circle journey with the inspiration going out, coming in, and now back out again." See her art at [facebook/fullfathomfive!](https://www.facebook.com/fullfathomfive)

A hui hoe. Email me [info@banzaib@hawaii.rr.com](mailto:info@banzaib@hawaii.rr.com)



*Christine Pagano, North Shore Artist*



## Cooke's Kokio, *Kokia Cookei*

*By Timothy Hickey, Horticultural Specialist, Waimea Valley at Oahu's North Shore.*

The Hawaiian Islands are the most isolated island chain in the world, which over time, has resulted in a biological cornucopia of evolution. Unlike today, early plant and animal colonizers would have made it here without the help of humans, by wind, waves or wings, and eventually evolved into new, endemic species that were specially adapted to life of these islands. At Waimea Valley, we cultivate over 5,000 kinds of plants in 41 gardens in our botanical collection, many of which are exotics from other areas in the Pacific. Seven of our gardens, however, are just for Hawaiian plants, which now need a lot of special help to grow in the areas they once would have called home.

One of Waimea Valley's most famous, and most endangered Hawaiian plants is the Cooke's kokio, known scientifically as *Kokia cookei*. There were originally four species, all thought to have evolved from a Hibiscus ancestor, each occupying a separate island, all now extinct or critically endangered. They were pollinated by Hawaiian honeycreepers, birds with curved, nectar drinking beaks. *Kokia lanceolata* was the species endemic to O'ahu's Koko head area, it is now extinct. *Kokia drynarioides* is very rare, only a few remain in the wild growing in North Kona, Hawai'i, and *Kokia kauaiensis* is found in mesic forest on parts of Kauai. Botanists think that *K. cookei*, a small dryland forest tree, was originally found in forest on Moloka'i's west side, this area would have been cleared for agriculture about 1000 years ago, possibly destroying a major part of the population. Hawaiian also stripped the bark and used it to dye fishnets, further reducing the population. In 1915, a single tree was found by the famous botanist Dr. Joseph Rock, and Moloka'i resident George Cooke. They collected seed, three of which germinated, one of which survived and was planted at Mr. Cooke's home. For the next thirty years, seeds were collected and sent to institutions around the world, and seedlings planted in many locations, none of which are known to survive. In 1950, George Cooke's tree died and the species was thought to be extinct.

In 1970, however, Mr. Cooke's son was clearing brush around his house and came across a small tree. It was a *Kokia cookei* seedling that had, by itself, germinated and grown to maturity. He invited botanists to come and try to propagate the tree, one of which was the director of the newly founded Waimea Arboretum and Botanical Gardens, Keith Woolliams. After five years of trying, a branch was successfully grafted on to another of the kokia species. No other seedlings or methods of propagation were successful, and the original tree died in a fire three years later. This left Waimea with the only living specimen of *K. cookei*, which until recently has only been kept alive by continually grafting onto one of the other

two kokia species.

Hope springs eternal for Cooke's kokio, it seems. Decades of work by committed botanists and horticulturalists at Waimea and other gardens have increased the number of *K. cookei* clones, and recently seeds were germinated in a laboratory at Lyon Arboretum, raising the hope that soon more than one individual will exist and increasing genetic diversity. At Waimea Valley we hand pollinate our specimens in the hopes of one day producing viable seed that will give this species a chance at survival.





# Free August GMO Panel Events

**“Pesticides, GMO’s, and Papayas An Unnatural Disaster in Paradise”**  
Tuesday, August 27th, 6 p.m.–8 p.m.  
Kapolei Middle School

**“Poisoning the Aina—Long Term Consequences of Pesticides, GMO’s, and Bee Colony Collapse”**  
Thursday, August 29th, 6 p.m.–8 p.m.  
Waianae District Park

Please join us for these two free events. The implications for our health and environment as a result of the prevalence of GMO’s in Hawaii is wide and varied. Please take advantage of this opportunity to hear from local and distant researchers and others in our community.

# SAVE THIS DATE!!!

Saturday, October 19, 2013  
9:00 a.m. to 2:00 p.m.

## HALEIWA JODO MISSION’S ANNUAL CRAFT FAIR

66-279A Haleiwa Road

\*\*\*\*\*  
★ Interested in selling your crafts? Please call 637-4382 or write to ★  
★ [haleiwajodominionyba@gmail.com](mailto:haleiwajodominionyba@gmail.com) for more information. ★  
\*\*\*\*\*

# Quality Tile Crafts

“No job too big or small!”

Specializing in Ceramic Tile,  
Travertine, Marble, & Slate

Kevin Wilson

cell (808) 864-4985 office (808) 638-8492  
[www.QualityTileCrafts.com](http://www.QualityTileCrafts.com) Free Est.

# North Shore Watershed Management Plan

The third North Shore Watershed Management Plan meeting held on May 23, 2013 are now available on the Honolulu Board of Water Supply website: <http://www.boardofwatersupply.com/cssweb/display.cfm?sid=125022>.

# North Shore Recycling Service

Curbside recycling pickup services for homes and businesses

- Two pickups per month at only \$24 per month (2 curbside recycling bins included)
- 100% of the recyclable donated to non-profit organization

Visit us at [www.ocr2000.com](http://www.ocr2000.com)  
To sign up call us at 262-2724 or email: [recycle@ocr2000.com](mailto:recycle@ocr2000.com)

# DRAFTPLANS HAWAII

- Over 10,000 floor plans & blueprints available for purchase online. Gather ideas for your own design.
- Drafting Service available for new home designs, additions, renovations, decks, fence, rock walls, etc.
- Free property specifications & title search info.

[www.draftplans.com](http://www.draftplans.com)

Call for free estimates:  
**265-0035**



# Professional Tattoo & Body Piercing Studio

Located in the  
Waialua Shopping Center  
Near the  
Old Sugar Mill

**808-312-3444**

Custom Designs · Re-Do's · Cover-Up's · Free Consultation

[oahutattooink.com](http://oahutattooink.com)

# Windward District schools join forces to launch massive attendance campaign

A new Windward District campaign targets 16,000 students and their guardians, and focuses on building consistent student attendance and on-time arrivals – key factors in student achievement, graduation and battling the nationwide dropout epidemic.

The highly visible promotion titled “Be Pono – Stay in School” launches August 5, the first day of school. The two Windward District complex-area superintendents (CAS) support the “Be Pono” campaign in all of their complexes – Kailua, Kalaheo, Castle and Kahuku. These four complex areas comprise 31 schools spanning 45 miles from Waimanalo to Sunset Beach.

“Be Pono” is the brainchild of five social workers at the Windward District Office in Kaneohe and took more than six months of planning. The strategic intervention features a smiling, likeable character-logo with positive messages on posters, flyers and signage. The operation will have a constant presence on campuses and in homes, stressing the importance of coming to school regularly and on time.

The social workers, who developed and steer “Be Pono,” felt inspired to initiate action and secured \$5,000 in funding from the school-based behavioral health section in early 2013.

“We’ve seen that attendance is high in the be-

ginning of the school year and declines by the end of the year, hence our campaign through June 2014,” said Paula Wong, district educational specialist and campaign manager.

The effort kicks off with all students receiving “Be Pono” school supplies, fun collateral like stickers and easy-to-read information for parents. Teachers are encouraged and helped to develop good systems of their own, using “Be Pono” as their platform.

“Every day a student is in school is one day closer to a college degree and a fulfilling, career,” said Castle-Kahuku CAS Lea Albert.

“Attendance is absolutely critical to student success. I am pleased that the Windward District is working together as we launch the ‘Be Pono – Stay in School’ campaign,” said Kailua-Kalaheo CAS Suzanne Mulcahy. “Our excellent teachers provide a rigorous curriculum so that our students graduate college- and career-ready, and students must be present every day.”

“Be Pono” includes tracking and assessment, and a second-semester kickoff with new saturation methods in schools, homes and public Windward areas.



## AFTER-SCHOOL ACADEMICS GRADES K-6: ALL SUBJECTS TUTORING-HOMEWORK -TEST PREP

- READING
- WRITING
- SPELLING
- VOCABULARY
- MATH
- SCIENCE
- SOCIAL STUDIES
- ESL

DELICIOUS, HEALTHY SNACKS

IN KAHUKU: MONDAY-THURSDAY  
School Dismissal 'til 5:30 P.M.

STARTS 8/5/13: ENROLL NOW!

EMAIL: [learningplus@hotmail.com](mailto:learningplus@hotmail.com)  
(808) 469-6463

Structure, Discipline, Consistency  
Proven Positive Results

The pride of Manu O Ke Kai continued from page 1

placed 1st in 6 of their races with one second place. Recently took 1st/Gold in the Hui Wa'a Championships in the 15 yrs old girls division. Then taking a chance in the 16 year old girls division, the same girls crew created an upset by defeating Kamehameha, who was undefeated in all regatta races. The girls took back-to-back 1st place/Gold awards in the Hui Wa'a Championships. The girls currently rank 1st in the State with the fastest 1/2 mile sprint time of 4:18:32 - in the 15 yrs girls division.

On August 3, 2013, the girls flew to Hanalei, Kaua'i, to compete in the Hawaiian Canoe Racing Association State Championships. In the 15 year old Girls Division, with a full slate of 14 crews from around the State, the girls came in second place with a time of 4:32.41 - winning the Silver medal! 1st Place was Keaukaha Canoe Club and 3rd Place was Lanikai Canoe Club. In the 16 year old division, the girls came in 7th out of 14 crews Statewide with a time of 4:47.14.

With each year, the girls are getting stronger and stronger! Can't wait for the 2013-2014 race season! Girls crew consists of: Shazary Sinclair, Sarina Souki, Kilia Chillingworth, Tupea Teuteu, Jasmine Piena and Kim Gordon. Girls Coach is Kim Celebre.

**WAIALUA FARMERS' COOPERATIVE MARKET**

HISTORIC WAIALUA SUGAR MILL GROUNDS  
Saturdays 8:30am - 1:00pm

Buy Directly From Our Local Farmers

TWIN BRIDGES FARM

KAHUKU FARMS

WAIALUA FRESH

DEL TROPICAL FLOWERS

T & L FLOWERS AND PALMS

WAIALUA COOPERATIVE FARMERS

FIELDS OF ALOHA

TASTE OUR WAIALUA FOOD PRODUCTS

FRANCIS BARBQ CHICKEN

NONI FRUIT LEATHER & LOTION

KALENA POLYNESIAN FOODS & CRAFTS

SOMETHING SPECIAL TARO CAKES &

BISCUITS

NORTH SHORE GOODIES

The original coconut peanut butter

AND MORE

A FARMERS' MARKET MANAGED BY  
FARMERS  
Edith 637-8589

**BULLETIN BOARD**

**BLUE PACIFIC WINDOW CLEANING**  
DA BESTEST WINDOW CLEANERS ON DA NORTH SHORE...  
**BPWC**  
"Catch Our Wave" ...FO' SHUA!  
**808.457.7600**  
[www.bpwcHI.com](http://www.bpwcHI.com)

 **Ernie Doak Plumbing, Inc.**  
*Quality without Compromise*  
NEW CONSTRUCTION • RENOVATION • SOLAR  
*Serving Oahu's North Shore for over 20 years*  
**ERNIE DOAK** cell 295-7943  
Lic. #CT-22113 office 638-8620  
Lic. #PJ-10630 [erniedoakplumbing@yahoo.com](mailto:erniedoakplumbing@yahoo.com)

**TASI BOUTIQUE**  
Inspired by the Ocean,  
Nestled in the Country!  
67-292 Goodale Avenue,  
Waialua, Hawaii 96791  
[Tasiboutique@gmail.com](mailto:Tasiboutique@gmail.com)  
Follow us on Instagram & Facebook!

**Green Waves Landscaping**  
**Ilan Freitas**  
Owner  
Yard Service  
Tree and Coconut trim  
Splinkler Installation and repair  
Grass Planting and other services  
Phone numbers: 372-8848/371-9617  
[greenwaveslandscaping@yahoo.com](mailto:greenwaveslandscaping@yahoo.com)  
Refer a friend and get one cut free!



**"THE BULLETIN BOARD THAT IS IN EVERYONE'S HOME"**

# BULLETIN BOARD



Featuring the largest selection of certified organic produce on the North Shore.  
 No panic...ours is organic.  
 Open 7 days.  
 Mon.-Sat. 9am-7pm.  
 Sun. 9am-5pm

66-445 Kam. Hwy  
 Haleiwa, Hawaii 96712  
 Next to the Post Office  
 808-637-6729 • 808-637-1922 fax



**DR. PORTER TURNBULL**  
 Chiropractic Orthopedist  
 (808) 638-8740  
 Appointments available Mon.-Sat.  
 (evenings by appointment)

- Industrial accidents & auto injuries
- Sports injuries • Spinal care
- Safe, Effective, and Gentle

## N-C PLUMBING & SUPPLY

Cont. Lic. No. C-8913



- RESIDENTIAL & COMMERCIAL SALES & SERVICE
- CONTRACTING & DESIGN • HOME PLUMBING SERVICE
- PLUMBING FIXTURES, HEATERS • FREE ESTIMATES

Nestor P. Calilao (Owner)  
 P.O. Box 769  
 Waialua, HI 96791

Bus: 637-8662  
 Res: 638-5157  
 Cellular: 372-8718

email: nncplumbing@hawaii.rr.com



**Jay Oku**  
 Loan Officer

(808) 393-0707  
 Office: (949) 281-3076

jay.oku@academymortgage.com  
 academymortgage.com/jayoku

1833 S. Coast Highway, Suite 210, Laguna Beach, CA 92651  
 NMLS #218211 | State Lic: CA #CA-DOC218211, HI #HI218211  
 Corp Lic: CA #4170013, HI #HI-3113 | Corp NMLS #3113 | Licensed by the Department of Business Oversight under the California Residential Mortgage Lending Act



## Restaurant & Margarita Bar

- DAILY SPECIALS -

Island Fresh Fish Tacos  
 Premium Margaritas

Large Parties Welcome Open Daily 9:30am - 9:30pm  
 637-3059 • North Shore Marketplace • Haleiwa  
 www.CHOLOSMEXICAN.com



LIC. #AG 18275

GENERAL ENGINEERING CONTRACTOR

Full Service Sitework  
 Contractor

Septic Systems & Tanks  
 25 yr. exp.

Michael Cowper 638-7200  
 cowperhawaii.com



Factory Showroom also available  
 ... Lost, South Point NSP & Accessories  
 Located at the Sugar Mill  
 638-0050 • 366-2282  
 www.SCHAPER-HAWAII



License No. C28113

Commercial • Residential  
 Septic • Solar • Design

Steve 371-3451 Mike 630-1407  
 Steve@offshoreplumbinginc.com

## Munden Design & Build

Lic.#BC19632

Design • Plans • Permits • Construction  
 Additions & New Residences

808 391-8616

Providing quality work since 1978

## J.B. TILE & CARPET

JOHN BURTCH

Free estimates  
 25 years experience  
 (808) 226-1023





**North Shore News**

**2013 Schedule**

PUBLICATION DATE	EDITION	DEADLINE DATE
September 4	#18	August 22
September 18	#19	September 5
October 2	#20	September 19
October 16	#21	October 3
October 30	#22	October 17
November 13	#23	October 31
November 27	#24	November 14
December 11	#25	November 29


Direct-Mailed to Every Home  
 MOKULEIA • WAIALUA • HALE'IWA • KAHUKU • LAIE  
 Every Other Wednesday  
 12,000 copies

"The North Shore's most popular publication" since 1970  
 (808) 637-3138 • NShoreNews@aol.com

**MAHALO!**  
 From the  
**North Shore Food Bank**  
 donations of non-perishable  
 canned  
 goods are accepted at the  
**North Shore News Office**  
**637-3138**




**Coffee!**  
*You can sleep when you're dead!*



**6:30AM - 8:00PM**  
**NORTH SHORE MARKETPLACE**  
**WWW.ROASTMASTER.COM**

**Our next service at Hale'iwa Beach Park**  
**Sunday, August 25, 2013**



Trish Coder Photos



**Lunch for everyone at 12 noon!**



**SURFERS, SAINTS & SINNERS ARE WELCOME!**

OAMC is a community outreach made possible by many generous supporters and volunteers. If you would like to support or volunteer for the OAMC call 690-0377.

The OAMC is scheduled to meet on the last Sunday of every month (except May & December).

*"There will always be poor people in the land. Therefore I command you to be open handed toward your brother and toward the poor and needy in your land." (Deuteronomy 15:11)*



The North Shore News is published every other Wednesday and mailed free of charge to all North Shore homes and businesses. Extra copies may be obtained at our office.

**PRESS RELEASE POLICY:** Submit press releases in person or by fax, mail or email to Editor, North Shore News, 66-437 Kam. Hwy., Suite 210, Haleiwa, HI 96712. Please type your releases and keep them shorter than 200 words unless they are of an unusual news interest. Releases should be viable news stories and are published on a **space available basis only**, with priority given to those received in our office first. You may attach photos. We are not responsible for the return of any photos. All materials are submitted at owner's risk. We reserve the right to edit and/or refuse all submissions including advertising.

**EDITORIAL POLICY:** We welcome articles and letters from our readers. Letters to the Editor are published on a space available basis only and preference is given to shortness of length, and quality of content. We prefer to run not more than one letter, per person, per 6 month period. Letters subject to edit.

Views expressed by our contributing writers and advertisers do not necessarily reflect the view of the management and staff of the North Shore News. All rights reserved. Reproduction in whole or part without permission is prohibited. © 2013.

#### Editor & Classifieds

Linda Seyler

#### Typography

Downtown General Store

#### Contributing Writers

Betty Depolito  
Naty Hopewell  
Choon James  
Kalewa

City Councilman Ernie Martin  
State Representative Lauren Cheape  
State Representative Richard Lee Fale



Please recycle this newspaper.

# CLASSIFIEDS

## SERVICES

### SHORE ELECTRICAL SERVICE

New Const-Remodels  
638-0049 / Lic#C20777

### Dog/Cat Nail Trimming

at your home only \$15.00  
Call Julie 637-5395

### Lawn Care For You

Mowing, Trimming, Light Hedging  
Call Thomas 637-5839

### PARADISE PLUMBING INC.

New Const • Repairs • Remodels  
808-368-1473 / Lic. 29856

### Handyman Services

Remodeling, Carpentry, Floors,  
Concrete, all parts of Construction  
Call Bob "The nicest guy in the  
business" Ph. 282-2812

### Greekz Plumbing LLC

Complete Service & Repair  
Camera inspection/drain cleaning  
"Got a leak? Call Steve the Greek"  
808-372-1820 Lic#32939

### Haugan Construction LLC

Build & Repair • Big & Small  
Let's Talk  
Steve 542-9269

### DILLON CUSTOM SIGNS

Storefronts & vehicles  
Haleiwa 499-9582 20+yrs exp

### North Shore Pumping

Septic and Cesspool Service  
Clifford 638-0900 • 291-5099

### Computer Problems?

I can fix any MAC or PC.  
Chris 371-3089

### Need Help In English?

Certified English tutoring available for students in college and high school. References and work examples available upon request. If you have any questions or would like to arrange an appointment. Please call: Jefferson Speer @ 808-386-2679 or email at www.Jefferson.speer@gmail.com

### Paumalu Electric Inc.

C 18074

Residential & Commercial  
New Installation & Repairs  
Renovations. Remodels  
Electric Meter Replacements  
Complete Install for Solar PV  
Dave Hancock 638-9054

### BOW WOW BUNGALOWS

Licensed Boarding Kennel  
North Shore, Oahu  
Reasonable Rates  
Ph. 637-2562  
*These Dogs Have Fun!*

### HARVEY'S REPAIR, LLC

24 hrs Towing Service  
Specializing in opening  
locked car doors  
Call any time 478-0333

### GERMAN CAR SERVICE

Professional-Qualified  
Technician  
Call Gary  
637-6800

### SHIATSU • LOMI

Aromatherapy  
Milica Barjaktarovic  
Lic # MAT8348  
351-0848  
HumanRemodeling.com

### Clear View Window Washing

Kaena to Kahuku  
Serving N.S. since 1988  
No job too small  
owner Patrick O'Brien  
699-9495

### Scot's Painting Service

Interior, exterior, latex, oil, stains  
Power washing.  
25 yrs. experience, free estimates  
Call Scot 277-1294

### BIKRAM YOGA

Never too bad, never too old,  
never too sick to start from  
scratch once again...

Call for class schedule

**637-5700**

### Your Clean Home

Vacation/Residential  
Home Cleaning

Affordable • Reliable  
• Green Cleaning

For Free Estimate

Call 638-0262 or 782-9941

### BOBBY'S BODIES

Tuesday evenings at 5:00 p.m.

• Body Toning

Friday mornings at 9:00 a.m.

• Cardio Pump/Fat Burner

For more info: call Bobby, owner of  
BOBBY'S BODIES at 637-4150

### Aloha Computer

PC Repair/Virus Removal  
Fax/Copy/Internet Access  
372-2667 or 237-4558

### REAL ESTATE NEEDS?

Call me . . . Dee,  
Your NS Realtor  
Dee-Ann KML  
Kekahuna, RA  
808-780-3249

### Golden Rule Lawn Care

Mowing, weed whacking,  
hedge trimming, rake up,  
light weeding & haul away.  
Call Matt 269-5020

### PIANO LESSONS

Guitar, Ukulele, Bass,  
Songwriting  
**637-4635**

## HOW TO CONTACT THE NORTH SHORE NEWS

Letters to the Editor, and other items submitted for publication consideration may be sent to us via:

MAIL: 66-437 Kamehameha Hwy., Suite 210, Hale'iwa, HI 96712

E-MAIL: NShoreNews@aol.com • FAX: (808) 637-8862

PHONE: (808) 637-3138

Office Hours: Monday-Friday 10 a.m.-3 p.m.

www.northshorenews.com

# CLASSIFIED ADS

**Next Issue - Sept. 4, 2013**  
**Deadline Date-Aug. 22, 2013**

**GUTTER KING, LTD.**  
 Rain Gutter Systems  
 Seamless Aluminum & Copper  
 Half round & Custom sizes  
 "senior, military discounts"  
**638-7246**

**J&L Services Haleiwa**  
 Quality Landscape and  
 Garden Maintenance. Also  
 Pressure Washing, Hedges  
 and Plant Installation.  
 Call 673-1384 for est.

**ANGELS PLUMBING**  
 Repairs  
 Remodeling  
 Renovation  
**638-7878**  
 Lic. #C12004



**THE LAWN RANGER**  
 Lawn Maintenance  
 no yard too hard  
 no lawn too far gone  
 We mow betta  
**258-6439 Dan Fatchett**

  
**Business Services Center**  
 Fast & convenient fax, copy,  
 scan, computer/internet,  
 laminate, etc.  
 Across from Haleiwa post office.  
**637-4558 or GoNorthShore.org**

  
**Marianne Abrigo, Properties**  
 Specializing in -  
 North Shore  
 Real Estate  
 Ask for our list of avail-  
 able properties and/or a  
 free market analysis.  
**Marianne M. Abrigo**  
 "Realtor since 1974"  
**Office 637-3511**  
**Fax 637-0777**  
**Email mabrigo222@aol.com**

**NORTH SHORE AUTO DETAILING**  
 Package #1 • \$50.00  
 Wash, wax, vacuum interior,  
 dress interior, dress tires  
 Package #2 • \$70.00  
 Wash, wax, water spot removal,  
 vacuum interior, dress tires  
 Vans, SUVs, Custom 4 Wheelers,  
 Glass water spot removal, extra (all packages)  
 Price may change on the condition of vehicles  
 interior and exterior  
 We are mobile we come to you  
 Call Billy 371-0854 or DJ 492-5887

**LEARN TO SWIM**  
 AT THE  
**HAWAII SWIM**  
**SCHOOL**  
 ON THE NORTH SHORE  
 Developing swimmers since 1982  
 Haleiwa Rd. at Smiley Place  
**637-4863**

**Individual & Family Therapy**  
 • Grief & Loss • Habits & Addiction  
 • Life Challenges & Transitions  
 • Clinical Supervision  
 Curielle Duffy, MA, MSW, LCSW, CSAC  
 808.633.3437 www.liferecovery.pro

**N.S. Property Maintenance**  
 Power wash, painting int/ext,  
 deck repairs, extensions,  
 fences, gates,  
 carpentry & remodels.  
 Maintenance, lawn & yard.  
 Chris 381-5213/638-0659

**North Shore Auto Salon**  
 We're still here  
 Mobile Service, 24 hr. notice, 9-5  
 All vehicles are hand washed  
 (808) 312-8511  
 northshoreautosaloncardetailing  
 @yahoo.com  
 Facebook: North Shore Car Detailing

**HELP WANTED**  
**BUSSERS/SERVERS**  
 Pizza Bob's in Haleiwa is looking  
 for BUSSERS/SERVERS. Experi-  
 ence preferred. Apply in person  
 at 66-145 Kam. Hwy.

**COOKS/KITCHEN HELP**  
 Pizza Bob's in Haleiwa is looking  
 for kitchen personnel. Experi-  
 ence preferred, but will consider  
 training the right people. Apply  
 in person at 66-145 Kam. Hwy.

**For Advertising Rates**  
 Call 637-3138 or go to  
 www.northshorenews.com

**Part Time Secretary**  
**Must have computer skills**  
**and high speed internet**  
**access.**  
**Fax resume to 638-7643**

**Retail Sales**  
**Surf & Sea**  
 Hawaii's Ocean Sports Headquarters  
 is always looking for hard working,  
 energetic people to become a part  
 of our sales team. Good pay, bonus,  
 benefits. Ocean sports experience  
 and/or bilingual a plus. Apply in  
 person daily 9am-7pm  
 62-595 Kam. Hwy., Haleiwa

**Help Wanted**  
 Front counter sales/light prep  
 must be able to multi-task and  
 work in a fast paced environment.  
 Competitive wages(up to \$15 hr)  
 Please email resume to:  
 pupukeagrill@gmail.com or  
 drop off during business hours,  
**NO PHONE CALLS!**

**MISCELLANEOUS**

**Blood Bank of Hawaii**  
 Saturday, August 31  
 Laie Shopping Center  
 55-510 Kamehameha Hwy.  
 Bloodmobile,  
 7:30am-1:15pm

**Waialua Library**  
**Book Club**  
 Thursday  
 August 22  
 9:30-11:30 a.m.

**Statewide Hotline**  
**for Litter**  
**1-888-592-2522**  
 Callers need to provide:  
 1. License plate number  
 2. Make and model of  
 vehicle  
 3. Date and time and  
 location  
 4. What was thrown/  
 blown

**CALL TO ARTISTS**  
**CO-OP - GALLERY**  
 ARTS CENTER - ART- DANCE  
 - MUSIC  
 CALL JAY MARR 637-2562  
 EMAIL JAYMARRZART@  
 HAWAII.RR.COM

**OFF da ISLAND**  
 Are you leaving Oahu on vacation or  
 business? Do you live on a neighbor  
 island, the mainland or foreign coun-  
 try and subscribe to the North Shore  
 News? Try send us a photo of someone  
 in front of a sign or landmark holding  
 a copy of the NSN. Email your photo  
 along with the person or persons'  
 name, community of residence, tele-  
 phone number and photo location to:  
 NShoreNews@aol.com. Or, mail to  
 OFF da ISLAND Photo, North Shore  
 News, 66-437 Kam. Hwy., Suite 210,  
 Hale'iwa, HI 96712. We cannot return  
 photos so please send us a copy. Photos  
 received become the property of NSN.  
 Preference and priority will be given to  
 emailed photos.

**Classified Ad Rates**  
 3 lines (min.) \$18.89  
 4 lines \$25.13  
 5 lines \$32.45  
 1" Box Ad \$41.88  
 (29 characters in each line)  
 Include your contact information.  
 \*Ads can be dropped off in mail slot,  
 mailed, or emailed. Pay by check pay-  
 able to: North Shore News or credit  
 card by phone order.  
 We reserve the right to refuse any  
 advertisement with a full refund.  
 North Shore News • 66-437 Kam. Hwy.,  
 Suite 210, Haleiwa, HI 96712  
 • (808) 637-3138 • NShoreNews@aol.com

**Ho'ola Like Waikiki**  
**Health**  
 Center's North Shore  
 Clinic Queen Liliuokalani  
 Church 8:30am - 3:30pm,  
 Tuesday and Thursday

**Hawaiian**  
**Humane Society**  
**(808) 946-2187**  
 Animal Rescues &  
 Investigations 356-2250  
 Dog Licensing 356-2227  
 Donations & Gifts 356-2221  
 Education 356-2206  
 Pet Adoptions & Lost & Found  
 356-2218

**Please Report Stranded**  
**Sea Turtles**  
 Call 983-5730 • Mon.-Fri., 7am-4pm  
 288-5685 pager wkends, holidays  
 587-0077 and after hours  
 Suspected Law Violations  
 541-2727 or 800-853-1964  
 NOAA Fisheries DLNR-DOCARE

**Voice of God**  
**Ministries**  
 Jesus Loves You  
 If you need Prayer  
 Call 808-373-0294



MALAMA MARKET HALEIWA:  
OPEN DAILY 7 AM-9 PM  
808.637.4520

MALAMA MARKET MAKAKILO:  
OPEN DAILY 6 AM-10 PM  
808.672.9955

Valid Dates:  
8/21/13-8/27/13

Local  
Sweet Gold  
Pineapple

69¢  
PER LB.

Regular, Baby,  
or Mini



Aloha Maid  
Fruit Drinks  
or Teas  
Selected Varieties,  
6/11.5 oz.

2/\$4.50



Blue Bunny  
Ice Cream  
Selected Varieties,  
56 oz.

2/\$9



Hawaiian Isles  
Water  
24/500 ml.

2/\$9



choice Certified  
Angus Beef®  
Boneless  
Chuck Roast  
Jumbo Pack,  
5 lbs. or more

\$3.49  
PER LB.



Lay's Brand  
Kettle Cooked  
or Maui Style  
Potato Chips  
Selected Varieties,  
4-8.5 oz.

2/\$5



Einstein Bagels  
Assorted Varieties,  
5 ct.

2/\$5

When You Buy  
2 or More!



Freshly Made

Ahi Poke

Selected Varieties

\$12.99  
PER LB.



Nabisco  
Chips Ahoy! Cookies  
or Snack Crackers

2/\$6

Selected Varieties,  
3.5-13 oz.



Reser's  
Salad  
Assorted Varieties,  
3 lbs.

\$4.99  
EACH



Tony's  
Crispy Crust  
Pizza

Selected Varieties,  
7.04-7.8 oz.

10 FOR \$10



Spam  
Luncheon Meat

\$1.99

Selected Varieties,  
12 oz.



Heineken,  
Corona,  
Stella Artois,  
Lime-A-Rita,  
or Bud Light  
Platinum  
12 Pk. Bottles  
or Cans

\$13.99

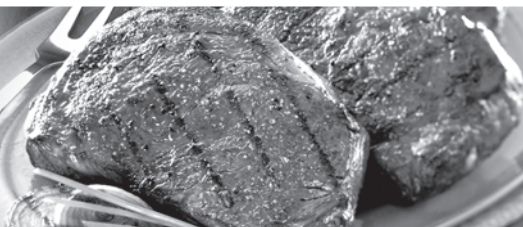


THURSDAY

INCLUDES:

7-8 oz. Steak

Rice • Tossed Salad • Drink



Grilled Steak  
LUNCH

\$6.99



Hawaii Beverage Free of 1¢ per can or bottle will be added to purchase price at checkout. An Additional Hawaii Deposit fee of 1¢ will be charged for all specially marked beverage containers.

Limit five units (mix/match) per purchase, unless otherwise specified. We reserve the right to limit quantities. No sales to dealers. Prices plus applicable state tax. Hawaii EBT cards welcomed.