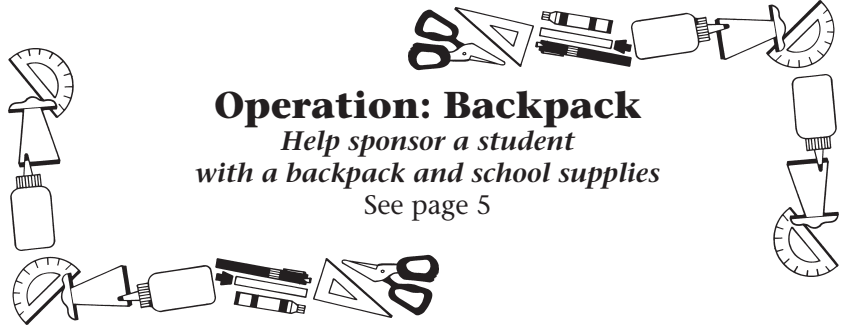




"E Ala Na Moku Kai Liloloa"



Operation: Backpack
*Help sponsor a student
 with a backpack and school supplies*
 See page 5

NORTH SHORE NEWS June 26, 2013 VOLUME 30, NUMBER 13



Waialua High School Surf Team.

Chance 'em brand gives back to North Shore's youth

The Waialua High School Surf Team is fortunate to have Chance 'em a locally established apparel company, successfully raise enough money and support within the community to create and fund the Waialua High School Surf Team for the past 2 years. Chance 'em

is a locally established company, founded on the North Shore of Oahu in 2010 by a close group of local surfers (Justin Lambert, Flynn Novak and Paul Chambers) determined to make a difference within the North Shore community. The boys at Chance 'em

are 100% dedicated to supporting youth related programs specifically on the North Shore, however their ultimate goal is to eventually help support a wide variety of youth enrichment programs throughout the entire state. Chance 'em brand is featured in local stores on the North Shore. For more information about Chance 'em visit their website @ www.chanceem.com.

PRE-SORTED
 STANDARD
 U.S. POSTAGE PAID
 Honolulu, Hawaii
 Permit No. 1479

Hale'iwa, HI 96712
 66-437 Kamehameha Hwy., Suite 210

**PROUDLY PUBLISHED IN
 Hale'iwa, Hawai'i**



OFF da Island in Sydney, Australia

Waiialua resident, Joan Crossen, getting “Koala-fied” (or feeding kangaroos) in Sydney, Australia, one stop of many on a Trans-Pacific cruise through Australia, New Caledonia, Vanuatu, Fiji and Samoa. En route she met Cathy and Andrew from Sunset Beach, Dr. Bob and Harlene from Kailua, Elise and Harry from Hawaii Kai, along with other Hawaii residents. When Joan is not with her Kutie Koala friends, you can find her reading the North Shore News to remind her of the good times on Oahu’s beautiful North Shore. For more information on our OFF da Island campaign turn to page 23.

North Shore Recycling Service

Curbside recycling pickup services for homes and businesses

- Two pickups per month at only \$24 per month (2 curbside recycling bins included)
- 100% of the recyclable donated to non-profit organization

Visit us at www.ocr2000.com
To sign up call us at 262-2724 or email: recycle@ocr2000.com

The Hale’iwa Family Dental Center, Ltd.



presents

“Comfort Dentistry”
including—

- Relaxation Glasses
- Television Glasses
- Caring Staff
- Special Medication to help you relax
- Laser Cavity Detection
- New Patients Welcome!

Your teeth are much too important to neglect.

Call: 637-9652
for your reservation

We’re conveniently located behind First Hawaiian Bank in the heart of Hale’iwa.

We’ve Moved

66-037 Kam. Hwy., Ste. 3
Haleiwa, next to Growing Keiki

Saccoccio & Lopez

ATTORNEYS AT LAW

Serving Haleiwa since 1984

Bankruptcy
*Personal Injury • Criminal Law
Landlord/Tenant
Traffic Offenses • DUI*

Family Law
*Adoption • Custody • Divorce
Paternity • Guardianship
Deeds, and Wills*

Notary Public

637-7611

VISA/MC Accepted



Paul & Nita

柔 **arte suave**
 術 **the gentle art**
JIU-JITSU
CLASSES



men women kids

starting
Monday, June 3rd



"The Jiu-Jitsu that I created was designed to give the weak ones a chance to face the heavy and strong. Always assume that your opponent is going to be bigger, stronger and faster than you; so that you learn to rely on technique, timing and leverage rather than brute strength" *Helio Gracie*

66-437 Kamehameha Hwy Haleiwa, HI 96712
 (back of North Shore News/Post Office)



for more info
www.NorthShoreJiuJitsuClub.org

808-799-7215
NorthShoreBJJ@Gmail.com



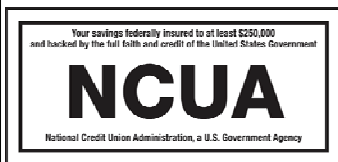
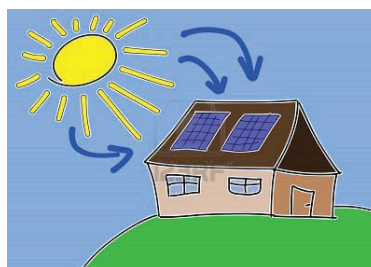
WAIALUA
Federal Credit Union



**Looking to install Solar Photovoltaic?
Consider a Home Equity Loan from Waialua FCU.
No closing costs and a low interest rate can help you on
your way to lowering your electricity bill.**

Current HELOC Rate is 3.75% APR*

*Annual Percentage Rate based on an index of 3.50% plus the monthly average of the 26 week Treasury Bill (Auction High) and may be adjusted annually each March. Please call for more details.



You are eligible to join if you live or work in Waialua or Haleiwa.

Phone: 637-5980 Located in the Waialua Shopping Center



The Bluegrass Barnstormers are back!

Sunday, July 7, 2013
4:00 - 5:30 p.m.
Waialua Bandstand in the Park

**If you like Bluegrass music you will love this group!
See you there!**

www.waialuabandstand.com

Generations
2013 Summer Concert Series

Waimea Valley · Pikake Pavilion Lawn · 11 AM - 4 PM



Saturday, July 27
THE INNOVATORS
Dedicated to Gabby & Emily Pahinui
Brother Noland · Ho'okina ·
John Cruz · Olomana



Saturday, August 31
THE FUTURE
Kaiholu · Abrigo 'Ohana ·
Waipuna · Maunaula

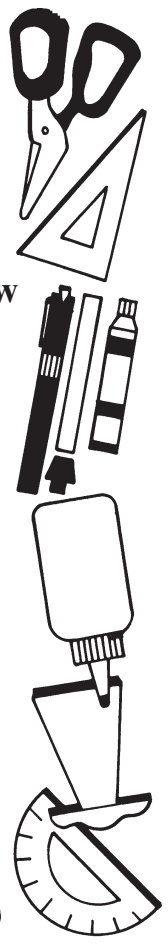
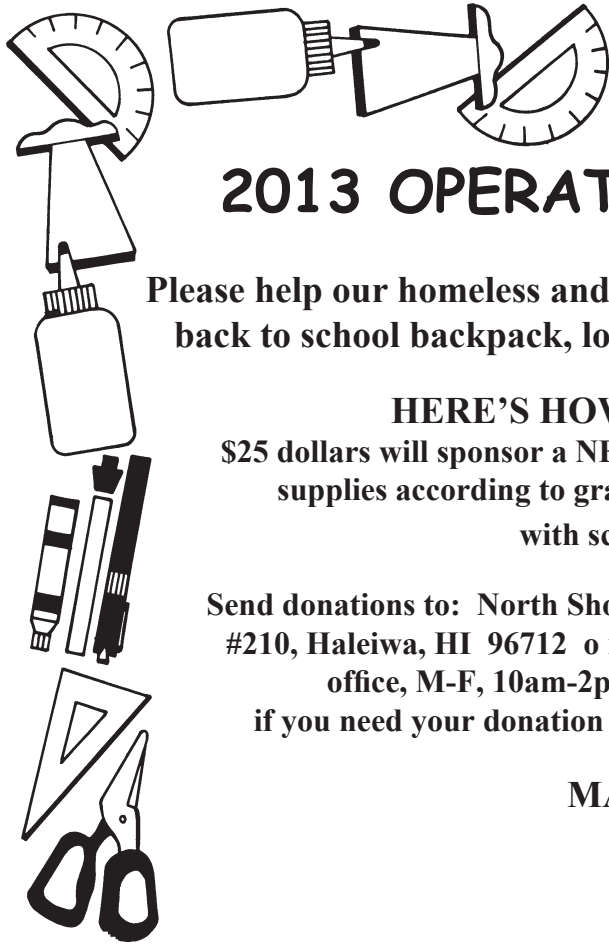
Presale Tickets Available At
Na Mea Hawaii - Ward Warehouse
Or Online At WAIMEAVALLEY.NET

Tickets	Adult	Child or Senior (65+)
Concert Series Presale	\$35	\$20
Single Concert Presale	\$15	\$8
Single Concert At the Gate	\$20	\$10



WAIMEA VALLEY

Call: (808) 638-7766



2013 OPERATION: BACKPACK

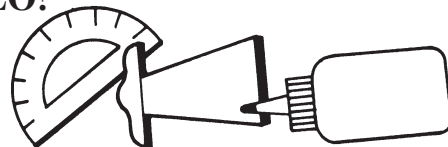
Please help our homeless and disadvantaged students with a new back to school backpack, loaded with needed school supplies.

HERE'S HOW YOU CAN HELP

\$25 dollars will sponsor a NEW backpack LOADED with school supplies according to grade. Or donate a new backpack with school supplies.

Send donations to: North Shore News, 66-437 Kamehameha Hwy #210, Haleiwa, HI 96712 or drop off at the North Shore News office, M-F, 10am-2pm. For more information or if you need your donation picked up call Linda at 637-3138.

MAHALO!



PRIMO ISLAND LAGER PRESENTS:

DA HUI PADDLE RACE

JULY 4TH 2013

<p>PRO-COURSE START: 9:45AM/TBR-OLA'S SIDE \$6,000 PRIZE PURSE!</p> <p>LONG-COURSE START: 10:00AM/TBR-OLA'S SIDE</p> <p>SHORT-COURSE START: 10:30AM @ SUNSET BEACH</p> <p>@11AM: SUP EXPO VISIT WITH SOME OF THE NATION'S TOP SUP COMPANY VENDOR BOOTHS, SUP DEMOS, HAWAIIAN ALAIA WOOD BOARD DEMO, HAWAII CRAFTER'S, ONO FOOD, PRIMO BEER GARDEN, PRIZE GIVEAWAYS, FAMILY FUN AND LIVE MUSIC!</p>	<p>@1PM: DA HUI PADDLE RACE AWARDS CEREMONY</p> <p>@2PM-8PM: LIVE MUSIC WITH JOHN CRUZ, TYPICAL HAWAIIANS, DARREN BENITEZ, KAIROOTS, KAPENA AND MORE SURPRISE GUESTS!</p> <p>@8PM: FIREWORKS!</p> <p>@9PM: SURFER, THE BAR AFTER PARTY!</p> <p># / DAHUIPADDLERACE</p>
--	--



BOOK YOUR ROOM AT TURTLEBAYRESORT.COM
FOR MORE INFORMATION VISIT DAHUIPADDLERACE.COM



ALL DAY NORTH SHORE JUST PADDLE ENJOY PRIMO THAT'S WASSUP

Local guitar virtuoso releases solo debut album

“Born and Raised” Features Never-Before-Heard Compositions by Local Artists

Waialua born and raised classical guitarist Ian O’Sullivan released his solo debut album, “Born and Raised,” on June 17, 2013. Music aficionados and appreciators alike will enjoy the likes of new music by O’Sullivan as well as compositions from local artists like Byron Yasui, Darin Au, Bailey Matsuda and Jeff Peterson.

“All the compositions on ‘Born and Raised’ are Hawaiian Classical Guitar Music,” said O’Sullivan. “This is a new genre of music. In Hawaii we have so many wonderful music traditions, and it’s really exciting to explore and expand our repertoire.”

The album features 14 compositions, many of which invite listeners to experience, via music, the places for which the songs are named. In addition to O’Sullivan’s “Mokule’ia,” “Hale’iwa” and “Waialua,” other pieces include Jeff Peterson’s Spanish- and Italian-infused “Piazzolliana” and Hawaii-styled “Makena” and Bailey Matsuda’s “Born and Raised,” for which the album is named.

This is O’Sullivan’s first album; however, some may recognize him from his performances at Carnegie Weill Recital Hall, the New York Guitar Society, the New England Guitar Society, Yale’s Morse Hall, Hawaii Opera Theatre and the Hawaii Public Radio Atherton Studios. His work has been lauded as “delightful” and “thoughtful.”

A Kamehameha Schools graduate and University of Hawaii alumni, O’Sullivan is the first guitarist from Hawaii to earn a Masters in Classical Guitar from Yale School of Music, which he attended on full scholarship. However, O’Sullivan didn’t receive formal training in guitar until college.

O’Sullivan teaches classical guitar at the University of Hawaii. In addition to classical guitar, he performs



Hawaiian slack-key, jazz and his own compositions.

“Born and Raised” will be available for \$9.99 at Amazon and iTunes beginning June 17. Pre-sale on iTunes began May 24. In addition to Amazon and iTunes, the CD will also be available on Amazon MP3, 7digital, Rumblefish, Shazam, Tradebit, Great-IndieMusic, and Google Music Store.

No job too big or small.
Located at the Waialua Sugar Mill.



**fab
ab**
808

**CERTIFIED WELDING
FABRICATION & REPAIRS
OF ALL METALS**

628.8719

SIX SPECIAL NIGHTS

MONDAY \$2.95 BEER BOTTLES & DRAFT	TUESDAY \$5.00 OFF PIZZA REGULAR OR LARGE	WEDNESDAY SALAD NIGHT 1/2 OFF SALADS
THURSDAY \$3.95 NIGHT \$3.95 SLICES, SALADS, MAI TAI'S, WINE & BEER		SATURDAY \$4.50 NIGHT \$4.50 SLICES, SALADS, MAI TAI'S, WINE & BEER

FRIDAY NIGHT \$7.50 BURGER & FRIES
Dine In Only - 4:00 PM Until Closing - Haleiwa Town Center - 637-5095

PLUS \$2.00 Off with this Coupon
Some Restrictions Apply. See Restaurant for Details.
When Ordering Regular Priced Items. Good Anytime. One Coupon Per Person.
Can Not Be Combined with Other Discounts. Expires 09/30/2013.

FUNDRAISING PROJECT
MANU O KE KAI
WOMEN'S CANOE CLUB
HOKU BBQ CHICKEN
SATURDAY, JULY 6
9:00am - 1:00pm
MILILANI TOWN CENTER



State Representative
Richard Lee Fale
Serving You in District 47

Traffic Updates

Recently, I sat down with the State of Hawaii Department of Transportation to discuss a number of the traffic issues that face our community from Waiahole and Waikane on the east to Waialua on the north. There were three major traffic concerns that I wanted to discuss with the Department of Transportation:

1. Traffic congestion and mitigation at Laniakea
2. Flooding and road closures at Waiahole/Waikane
3. Road surface quality from Waiahole to Waialua

Here are some of the updates I received:

Laniakea Traffic—We had a long discussion about the various options that have been discussed in the past about the congestion here, including options that would involve a joint effort with the State and City and County of Honolulu. Several obstacles exist, the biggest being the inherent liability issues and the negotiations over indemnification between the City and County and State. Negotiations are time consuming and would require a significant amount of time to work through, according to the State. Options that do not involve working with the City and County as extensively include limiting all public access to this area, which would have the greatest improvement in traffic flow, would address a number of the liability issues and would expedite a resolution. This, however, I know would be disappointing to the kama’aina and visitors who frequent these beaches. No matter the solution, the community’s input on their desired solution and willingness to work through the changes and impacts that may happen are paramount. I will be making extensive visits in the area to gain a greater understanding of what solution our community favors. Please communicate your thoughts on this matter with me by contacting our office or sharing your thoughts the next time you see me in the neighborhood.

Waiahole/Waikane Road Closures—Frequent flooding and road closures significantly impact our community given that the district is only accessible by one road from two directions. Maintaining access points is very important, especially during storms, flooding and natural disasters, which we are particularly vulnerable to. We have made strides in mitigating one of the more common closures with recent state funding dedicated to bridge improvements and replacements in the Waiahole/Waikane




area.

Road Resurfacing—Rough roads are a daily hazard that, unfortunately, take sometimes years to correct. For example, an environmental study must be conducted even when basic repair and maintenance is needed on existing roads such as Kamehameha Highway. These studies take two to three years to complete. There is also significant coordination and communication needed not only between different levels of government but also between departments. Fortunately, these have been underway and resurfacing projects are expected this fiscal year.


Traffic greatly impacts the quality of life in our community and working towards these traffic solutions are very important. I hope you will contact our office at 586-6380 or email me at repfale@capitol.hawaii.gov and continue to share your thoughts or concerns about these or other traffic issues you come across each day. I look forward to hearing from you!

**For Community Calendar
of Events go to North Shore
Chamber’s website:
www.gonorthshore.org/events**


Summer Vacation is here!
So much fun in Hawaii.....

*No school and homework
*Swimming *Snorkeling *Surfing
*Camping *Excursions *Biking
*Hiking *Fishing *Kayaking



Plus.....don't forget to visit
Paalaa Kai Bakery in Waialua
PKB, da Best





Representative
Lauren Cheape
 Serving You in District 45

Quite Time at the Capitol?

Now that summer is officially here, it is a typically a more calm time at the Capitol. The pace appears to settle down a bit, creating an illusion of tranquility, but much important work is being done. The bills have been voted and passed and they now await the final step: enactment into law. The bills will then be referred to as Acts when signed into state law by the Governor. You may have seen or read media coverage about some of the bills already signed/enacted into our laws.

There is still the possibility that not all bills passed in the 2013 Legislative Session will be enacted into law. This year the Governor has until June 24th to decide which, if any of the 2013 bills he chooses to veto, and he must notify the Legislature of those bills on that day. July 9th is another important day to note because this is the day that any bills not vetoed or signed by the Governor will pass into law. So far no bills have been identified for veto.

Bill enactment is just one of the many activities taking place at the Capitol. The bulk of the activity for bills to be introduced in the 2014 Legislative Session is taking place now, during the deceptively calm and quiet time at the Capitol. So what does this mean to you?

It means that NOW is the best time to begin communicating with your elected officials to get the ball rolling on the issues and concerns you want to see considered in 2014! The research and drafting process is a lengthy one which involves extensive coordination and vetting with many individuals, agencies, and departments before a drop of ink can be put to paper. It's so ironic that this all begins at a time when next year is far-removed from people's minds as they enjoy summer with family and friends!

Although I sit on 5 House Committees (Agriculture, Education, Higher Education, Health, and Housing), the needs and concerns in our community are more far-reaching than simply those committee areas. I am committed to working tirelessly to improve our community. When you see me out and about in our community, let me know what's on your mind for the betterment of our community. You can always reach out to me at my office at 586-9490 or RepCheape@Capitol.Hawaii.gov or. It's always a privilege and a pleasure to hear from you. Your voice is valuable and important in making our community a great place to live!



Call for daily specials

840-0223

Phone orders welcome

Come and enjoy some local kine grindz!!

Located next to Haleiwa Post Office

Next issue July 10, 2013

Hale'iwa Arts Festival

Deadline June 27, 2013

Free Termite Control

Sandwich Isle has been the North Shores Premier Pest Management company since 1997. We are expanding our operations and have an unbelievable offer for North Shore residents.



When you sign up for a new "every other month" pest control service, we will install the **Sentricon Termite Baiting System for FREE. Save \$750 today and take advantage of this limited time special offer.** (2 year agreement required, based on 3 bedroom home.)

Sentricon
 Colony Elimination System
 AlwaysActive



Call the company you
 can trust at

456-7716

for a free estimate

www.sandwichisle.com

License # PCO 771

Sandwich Isle
 Pest Solutions



**Country Talk Story
with
Choon James**

Environmental Reviews Protect the Public

Some developers want the government to EXEMPT them from environmental reviews. However, if they get this exemption, the public will be cut out from disclosure and review processes.

Providing EXEMPTIONS that will cut off public engagement is a very bad idea. Nobody wants to wake up one morning and to read in the newspaper about a surprise project next to him/her.

The "environment" includes social, economic, and cultural impacts. The public must be protected through these lawful reviews. Environment reviews protect the public and provide equality and equity for the most affected people. That should make us all environmentalists!

References:

*Hawaii Revised Statutes Chapter 343:
§343-1 Findings and purpose.*

The legislature finds that the quality of humanity's environment is critical to humanity's well being, that humanity's activities have broad and profound effects upon the interrelations of all components of the environment, and that an environmental review process will integrate the review of environmental concerns with existing planning processes of the State and counties and alert decision makers to significant environmental effects which may result from the implementation of certain actions. The legislature further finds that the process of reviewing environmental effects is desirable because environmental consciousness is enhanced, cooperation and coordination are encouraged, and public participation during the review process benefits all parties involved and society as a whole. It is the purpose of this chapter to establish a system of environmental review which will ensure that environmental

concerns are given appropriate consideration in decision making along with economic and technical considerations. [L 1979, c 197, §1(1); am L 1983, c 140, §4]

"Environmental assessment" (EA) means a written evaluation to determine whether an action may have a significant effect.

"Environmental impact statement" (EIS) or "statement" means an informational document prepared in compliance with the rules adopted under section 343-6 and which discloses the environmental effects of a proposed action, effects of a proposed action on the economic welfare, social welfare, and cultural practices of the community and State, effects of the economic activities arising out of the proposed action, measures proposed to minimize adverse effects, and alternatives to the action and their environmental effects.

Choon James has been a real estate broker for over 20 years. She hosts "Country Talk Story" on Olelo Television every Saturday at 5:00 pm on Channel 55. Choon can be reached at 808 293 9111 or ChoonJamesHawaii@gmail.com

**Send us your "Letter to the Editor"
on any topic in the NSN publication,
or any community concern.
Letters 200 words or less preferred.
Include first & last name
& contact phone number.
NShoreNews@aol.com**

SUMMER ART CLASSES KEIKI & ADULT

Waimea Falls Park 59-864 Kamehameha Hwy Haleiwa
www.MarinaCrawford.com www.OstaLangeArt.com

July 1 - August 1, 2013

Landscape Drawing Classes

Explore the grounds of Waimea Falls Park while getting to know native plants and cultural sites through artistic exploration. Each class is two hours, supervised by two local artists who will help guide students through this basic course focusing on applying twelve principles of drawing through creative development and visual explorations.

Ages 13 + Mon and Weds 130 - 330 pm
10 classes - \$350 (includes discount park pass for adult)
5 classes - \$200 (includes discount park pass for adult).
1 class / per day - \$30 + park admission each day

Keiki Botanicals Art Classes.

Lets get your kids up, moving and interested in something creative! Each class will be different! Come join us for an adventurous creative journey! Prepare to have fun! We will explore off the beaten path places to find inspiring natural sights to make art in the wild, diverse landscape of Waimea Falls Park. We will discuss the importance of natural cultural sites as necessary elements to enrich our lives and reconnect with nature while teaching appreciation, respect and sustainability of our wilderness.

Ages 6 - 17 Mon and Weds 10 am - Noon.
10 classes - \$300 (includes discount park pass for child).
5 classes - \$175 (includes discount park pass for child).
1 class / per day - \$30 + park admission each day

Make your reservation today!

Call 808.372.1571 for more information

**Professional
Tattoo
&
Body Piercing
Studio**
Located in the
Waialua Shopping Center
Near the
Old Sugar Mill
808-312-3444
Custom Designs · Re-Do's · Cover-Up's · Free Consultation
oahutattooink.com

Olakino Maika'i

(Good Health)

by Naty Camit Hopewell

Wild Ginger for Weight Loss

There is an herb, *Aristolochia*, that was highly regarded as a medicinal plant in ancient Egypt, Greece and Rome. It is also used in traditional Chinese medicine. Many names are used for this herb, such as wild ginger (*Asarum canadense*) or fang ji (*Atistolochia fangchi*). The common name, wild ginger, may be explained by the fact that it smells and tastes somewhat like the ginger that is used in cooking. However, it is not related to the ginger that we all know. Despite its use in ancient medicine, *Aristolochia* is known to contain a lethal toxin, aristolochic acid, which causes cancer in humans, rats and rabbits.

In the early 1990s, a weight loss clinic in Belgium dispensed a weight loss regimen that included many drugs plus 2 Chinese herbs. Unfortunately, one of the herbs was replaced by *Aristolochia westlandi*. After several years, acute kidney failure occurred in patients, many of whom eventually had transplants. Many of the kidneys replaced were found to have cancer. There were similar incidents in several countries resulting in this product being banned in Germany, Belgium, Japan, Malaysia, New Zealand, England and Australia. It was banned in the U. S. in 2001.

An article published in 2012 indicated that a Chinese company had been using *Aristolochia* in its weight loss formula. In 2013, it was reported that products containing *Aristolochia* were commonly available online. A word of caution—be aware of the ingredients of products that you buy online. There are no laws regulating marketing of herbs. By the time symptoms of kidney failure occur, the damage is done and not reversible when its use is discontinued. There is a misconception that “natural” products can't hurt you. However, many things in nature are harmful or poisonous.



Waialua Little Leaguers Compete at Dodger Stadium

By Gil Riviere

Two players from Waialua Little League were invited to play at Dodger Stadium in the 2013 Pitch, Hit and Run (PHR) Competition. Joshua Muniz took second place in the Boys 13-14 year old division and Blazen Benz finished third in the Boys 7-8 year old division on the home field of the Los Angeles Dodgers.

Waialua Little League is pleased with the strong showing of our young ball players in its first year of hosting a local Pitch, Hit and Run event. Other Waialua competitors who placed in the Sectional Event are Tehiva Seumautafa (1st, Girls 7-8), Matthew Hatchie (3rd, 13-13 Boys), McKenna Cameron (2nd, Boys 11-12), Dylan Muniz (3rd, Boys 11-12), Gino Coyle (1st, Boys 9-10), and Nate Benz (2nd, Boys 7-8).

Sectional scores from around the country are compared to determine which players advance to play in one of the 30 major league ball parks. Winners from that level then compete in the PHR Finals before the Major League Baseball All Star Game in New York.

In other league news, the 9-10 Year-old Waialua All Stars defeated Ewa Beach and MKH Little Leagues to earn third place in the District 7 Tournament held at Whitmore Field. The team's only losses came to Waipio and Pearl City, who took first and second, respectively.

Congratulations to team manager Frank Muniz, coaches Ryan Benz and Rey Ramos, and players Graysen Aniya, Kainoa Antony, Erik Bell, Mana Benz, Gino Coyle, Kade Dellatan, Zane Dobecki, Pono Estores, Keanu Keil, Micah Langamin, Raysen Motoyama, Dylan Muniz, Ramsey Ramos, and Ian Sutherland.

HONEY GIRL
ORGANICS

Handmade Organic Skincare

1-808-638-5302
honeygirlorganics.com



Art...is the Ron Artis Family Band (RAFB)

by Chris Shindoe and LynRiss

Meet North Shores very own Ron Artis Family Band (RAFB) and step into their Hale'iwa studio for some jammin' tunes from classical to rock, blues to salsa, reggae to funk, all genres of music.

The kids were raised on jazz classics like Thelonium Monk and Miles Davis. The family writes their own music and play their own instruments which comes from life experience and from the heart. They know theory, writing key and horn parts for classical compositions and they enjoy jamming live to come up with new music. Ron says they have to "be beyond honest in their writing, come together as one and play for the good," referring to the RAFB music. Ron

Artis II plays 7 instruments, yet says he is comfortable noting 5 of them and his brother plays up to 9 instruments. RAFB feel it best to let the younger kids, be kids first, then grow into what is comfortable for them in the band setting. Ron goes on saying "Expressing who you are is the reason for playing. Find your truth and be honest about being honest." And "Our parents taught us the shortest distance between two points is not straight line" and continues "that it curves and winds, to find that other point you must keep going, over, under or around."

Visit the Ron Artis Family Band studio in Hale'iwa or visit their website at RonArtisFamilyBand.com.

KUA AINA

The Best!

· IN HALEIWA ·
637-6067

· IN HONOLULU ·
591-9133
AT WARD CENTRE

HALEIWA · TOKYO · HONOLULU · LONDON



Is your child struggling with:

<ul style="list-style-type: none"> Motivation in school? Maintaining healthy relationships? Showing empathy for others? 	<ul style="list-style-type: none"> Respect for peers and adults? Communicating their feelings? Demonstrating appropriate boundaries? Showing confidence in themselves?
--	--

Join us for **HORSE PLAY!** We will work with your child to improve many areas in their life by working with horses in creative and fun activities.



Hawai'i Equine Assisted Reflection & Therapy
(808) 561-4184
Register your child today at www.hearthorses.com



Blu & Minka

WANTED: PET PHOTOS

The Friends of Waialua Library invite you to display a photo of your beloved pet at our library.

Applications and guidelines are available at the library and the deadline for applications is July 12, 2013.

The reception for the "Pet Portraits" photography show will be on Thursday, August 8, 2013.

Photos will be on display for one month.

Jack Johnson announces fall headline tour

Johnson to donate 100% of tour profits to charity

by Brittany Pearce

Jack Johnson announces fall headline tour dates in support of his sixth studio album, *From Here To Now To You*, to be released on September 17 through Johnson's own Brushfire Records. Johnson and his band will kick off their tour in Europe on September 5, and return to the States with a headline performance at Life is good Festival on September 22 in Canton, MA. From there, inspired by his solo acoustic Hawaiian Islands Theater Tour last year, Johnson will play some of the most beautiful and intimate seated theatres in North America including Nashville's Ryman Auditorium, Seattle's Paramount Theatre and the Orpheum Theatre in Los Angeles. As Johnson told Rolling Stone about his 2012 Hawaiian Islands Tour: "They were the most magical shows," he says. "It gave you the time to tell stories and where the songs came from. I really enjoyed that. I think we're going to mix it up next year with different types of tours, but at least for a lot of it, we're going to try to do some theaters." With 25 of his 28 fall tour venues in historic theaters, Johnson is doing just that. As with all of his tours since 2008, Johnson will donate 100% of his tour profits to charity.

Johnson and his production team, alongside Reverb, will continue to pave the way in green touring practices and community engagement initiatives. Tour vehicles will be fueled by domestic sustainable biodiesel wherever possible, concertgoers will be offered mass transportation options, waste reduction measures will be expanded and single-use disposable water bottles will continue to be

eliminated backstage. In addition the tour will source local food from "farm to stage," produce and offer eco-friendly merchandise, provide free water refill stations and invest in community based carbon offset projects. For all details, visit: www.jackjohnsonmusic.com/greening

Through ongoing promotion of the All At Once campaign, Johnson's fall *From Here To Now To You* Theater Tour will support over 75 hand-chosen community groups across Europe and North America with direct and matching donations. This year's All At Once campaign will focus on engaging fans to take action in support of sustainable local food systems and plastic free initiatives. For all details, visit: www.allatonce.org

From Here To Now To You was recorded in Hawaii at Johnson's Mango Tree Studio and produced by Mario Caldato, Jr. who produced Johnson's biggest selling album, *In Between Dreams*, as well as albums by Beastie Boys, Super Furry Animals, Seu Jorge and more. The album also marks a reunion with good friend and fellow musician Ben Harper who lends his talents of vocals and Weisenborn slide guitar for a song. The album's first single, "I Got You" was #1 most added at AAA radio and is now available to purchase on iTunes alongside a full album pre-order which has already risen into the iTunes Top 10, 3 months before its release. <http://smarturl.it/JackJohnsonFHTNTYiT>

Listen to "I Got You" here: <http://bit.ly/13truQ6>

WILD KEIKI Planting Keiki

by Ryan Belcher, Conservation Technician, Waimea Valley, North Shore, O`ahu

The winter season on the North Shore brings large waves, surfing contests, and lots of rain. Ho`oilo or the “wet season” means its planting time in Waimea Valley. Through out the year staff and volunteers have been collecting native seeds on Waimea’s mountain ridges and growing them in the nursery to be out-planted back into the mountains. Today Waimea has a special group called “The Wild Kids” to help in our planting efforts. “Wild Kids,” led by school teacher Christina Hoe, is a club that allows kids the opportunity to get outside and just be kids. The kids take part in hikes and camp-outs while learning the importance of the environment and building a deeper connection to the land.

The day starts with introductions (including their “wild names”) to the staff, followed by tradition Hawaiian protocol to ask permission to enter the valley. Once protocol is completed, the group and staff take a short scenic hike up to Kalahe`e Ridge carrying tools and native plants. While hiking, the Wilds Kids learn to identify different types of native and introduced plants along the trail. As the trail levels out everyone is rewarded with an amazing view of lush Waimea Valley, the misty Mount Ka`ala, and the beautiful North Shore.

Before we begin the out-planting, the “Wilds Kids” are taught the importance of native plants in Hawai`i and the benefits that plants provide in our lives from the air we breath to the water that we drink. They are also taught about the ahupua`a (land division) management which typically runs from the mountain to the sea. They also learn about how the plants that they plant today will have a lasting impact for

generations to come. Most importantly they learn to put love into the work to help the plants grow.

The “Wild Kids” break up into partners and begin planting of koa and `a`ali`i. The sound of picks hitting the ground, kids laughing, and the cool breeze blowing on the sunny day is perfect. When the planting is finished, totaling 150 native plants, we regrouped for a debriefing. The “Wild Kids” end the out-planting with an appreciating circle saying something they learned and thanking someone specifically for their help at some point in the day. The youngest child ends the day thanking “the first koa tree, because if that koa never existed we would have never had the chance to plant today.” Keiki in Hawaiian language means child, offspring, descendent, or shoot or sucker as in a young plant. The future is the hands of our children and they can be taught the proper way.





www.oc16.tv

BANZAI NORTH SHORE WIRELESS

Sunset Beach resident surfer Mahina Honoka Maeda is a World Champion! The 15 year old made the Verizon World Jr team and won gold in Nicaragua this month propelling her team to a second place finish. The ISA event is considered the Olympics of surfing for Junior surfers. Thirty countries participated in the event at a place called Jiquiliste Beach, a beach break. Waves were pretty good for the 8 days, 3-6 feet, after a bit of a storm. "I've never been this happy in my life," said Maeda after the win. "I took the Gold Medal for my division which is under 16. As a team result we received Silver. We were 400 points behind! But it was a great battle and next time it will be in Australia."

Mahina was born in Hawaii after her Japanese parents moved here, she is fluent in Japanese and sometimes competes in Japan as well as a ranked pro surfer. Having that status is strict in Japan. Maeda started competing like many North Shore kids at the Menhune Championship at Hale'iwa where she won her first event in 2007 as a 7 year old. She has been winning ever since. Maeda has always been a stand out in any contest she surfs. Her big turns are way bigger than her age and her confidence in solid size surf is a plus! She is one of those people who has a giant smile and a great sense of humor. Someone with energy, she is electric, boogie, woogie, woogie! She also is a straight A student an all around champion.

She does have some support. Thanks to Dove Wetsuits, Sexwax, Future Fins and Creatures for supporting the North Shore native. One of her biggest wins was a ASP Jr. Pro at Queens at the Duke's Oceanfest last August and a 2nd at the Jr. Pro at Sunset Beach, her home break. Now World Champ, congrats to Mahina Maeda!

Official Results

1st Mahina Maeda(HAW) 19.16 Gold Medal
 2nd Karrelle Poppkke (TAH)13.27 Silver Medal
 3rd Dax Mcgill (HAW)10.57 Bronze Medal
 4th Frankie Harrer (USA) 4.86 Copper Medal

Another Gold went to Josh Moniz who won the 18 and under division. He has been winning events from a young age as well. The one he most cherishes is the "King of the Groms National Champion" from 2010. No more, the title of World Jr. Champion is a good one! The Billabong team rider is part of the famous Moniz family under the helm of pro surfer Tony Moniz. Congrats to the whole family.

Results:

Josh Moniz (HAW), Gold Medal
 Soli Bailey (AUS), Silver Medal
 Andy Criere (FRA), Bronze Medal
 Luke Hynd (AUS), Copper Medal

Official County Results:

1. Australia- 24,256 points and Winner of the ISA World Junior Team Champion Trophy
2. Hawaii- 23,828, Silver Medal
3. USA- 18,870, Bronze Medal
4. France- 18,212, Copper Medal
5. Japan- 16,322
6. South Africa- 15,652
7. Peru- 15,316
8. Brazil- 15,300
9. New England- 12,532
10. Portugal- 12,310
11. Costa Rica- 12,232
12. Venezuela- 10,388
13. Germany- 10,312
14. UK- 9,580
15. Argentina- 9,578
16. Tahiti- 8,700
17. Uruguay- 8,408
18. Puerto Rico- 8,276
19. Ecuador- 8,108
20. Nicaragua- 7,648
21. Panama- 7,168
22. Chile- 6,764
23. El Salvador- 5,184
24. Switzerland- 4,180
25. Italy- 3,440
26. Jamaica- 3,328
27. Mexico- 2,320
28. Barbados- 1,340
29. Ireland- 960
30. Russia- 640

The Duke's Oceanfest is right around the corner. It will be another big event with several competitions spanning 9 days. Get your entries in for 12th annual event which will be held at venue sites throughout Waikiki, from Saturday, August 17, through Sunday, August 25. The 9-day event features a variety of ocean sports that were close to Duke Kahanamoku's heart. Longboard Surfing - Paddleboard Racing - Swimming - Tandem Surfing - Surf Polo - Beach Volleyball - Stand-

Continued on page 15

Special Olympics Hawaii Soccer Program

Talk with your feet, play with your heart! Special Olympics Hawai'i invites soccer players to participate in a free soccer program in Hale'iwa. Participants will have the opportunity to learn or improve their dribbling, shooting and passing skills.

The program is available to participants with intellectual disabilities who are eight years and older. Players may even have the opportunity to show off their skills in competitive events scheduled for August 3, 2013 at Waiiau District Park and the State Soccer Competition scheduled to take place August 17-28, 2013 at the same location.

Special Olympics Hawai'i provides year-round sports training and athletic competition in a variety of Olympic-type sports for children and adults with intellectual disabilities. Programs like these provide individuals with ongoing opportunities to develop physical fitness, demonstrate courage and share joy with their families, other Special Olympics athletes and the community.

Practice will take place at Hale'iwa Ali'i Beach Park, 66-167 Hale'iwa Road, Hale'iwa (Lawn area to the left of the Surf Center) every Thursday from 4:00 p.m. to 5:30 p.m. on June 27, July 4, 11, 18, 25, and August 1, 8, 15.

Want to help these Special Olympics Hawai'i athletes? Volunteer assistant coaches are needed for

this and future sports in the North Shore community. Training is provided.

To sign up for soccer, please contact Coach Thomas Barrera, 808-675-1443, email: Thomas.barrera1@gmail.com

For more information, contact Jennifer Ernst, Special Olympics Hawai'i area director at 808-943-8808 x 112, ha@specialolympicshawaii.org, or visit the Special Olympics Hawai'i website at www.specialolympicshawaii.org.



Banzai North Shore Wireless continued from page 14

Up Paddling, Surfing etc. The event honors Duke Paoa Kahanamoku, who is remembered as a great waterman. He is probably the most famous surfer in the World. He was Hawaii's ambassador of Aloha and was an Olympic Gold medalist who famously brought surfing to the world. The festivities commence on August 17, with a lei draping and ceremony at Duke's statue, Waikiki, that is open to the public. Duke's birthday celebration is on August 24th and is one of many of the weeks highlights; which also include the KINE Luau, Waterman's Awards, etc. The ocean sports events begin on Saturday, August 17 through Sunday, August 25. It will have several World Class events including 4 ASP, Association of Surfing Professionals, rated competitions in junior and longboard surfing.

The festival is also a fundraiser for scholarships and grants for the Outrigger Duke Kahanamoku Foundation which supports local scholar athletes. This foundation is the only one who supports water sports. Recently they gave away over \$150,000 to Hawaii's athletes through their scholarships and grants through donations. They also announced the inductees of the Waterman Hall of Fame. The recipients are Steve Borowski for swimming, Tommy Conner for paddling, Linda Kaiser in open water swimming, Bill Smith for ocean safety and China Uemura for

surfing! They have a big awards party at the Outrigger Canoe Club. these folks are being honored for their lifetime contributions to our water sports community. Get your tickets at <http://www.dukefoundation.org>. Really a great event in conjunction with the Duke's Oceanfest!

WSSM Women's Surf Style Magazine is producing another hard cover magazine. Keep your eyes peeled it will be out in July and will have great stuff about our North Shore surf scene. Sandra Olsen the publisher is working hard! Mahalo!

★

BANZAI PRODUCTIONS

Video - Media

Need Web Video

Ask About Our

Special Rates

808- 781- 2535

★

Waialua - The Saga of the North Shore

Chapter 35 - Pipi

By Kalewa

The kapu on the cattle Vancouver had left with Kamehameha was still in effect after twenty five years. The second and third generation of bulls had become serious garden pests and huge consumers of thatched hale. By late 1817 the King realized that his yam fields were being trampled. He sent La'anui, in the Iwa, up from Kailua, Kona to Kawaihae to see what was to be done. Olohana was waiting on the beach with a frown on his aging face. He stated that since the cattle had been turned loose on the lands under La'anui's late father Nuhi, it had become La'anui's responsibility to maintain control of the herd. Leaving firm orders to remove the cattle from Kawaihae, Olohana boarded the schooner and took her back down to court.



There was no hurry to do anything that afternoon. The cattle were mostly up north, grazing on the houses of the commoners. The conversation around the lu'au, hula and bottle that evening centered around what to do about the cows. Amongst the haoles lounging ashore that evening was an American crew, who had picked up a few hands in San Blas. Two of them became quite attentive once they figured out what the conversation was about. They were Spanish, "Españolo", who had grown up in Andalusia herding sheep and cattle in the mountains.

Word was sent throughout the Kohala District for all of the people to gather at the Pu'u Kohola Heiau the following morning with loose clothing or kapa and whatever noise-makers they cared to bring. It was a colorful and riotous crowd that lined the walls behind the villages. They chased the cattle herd mauka, under directions from the two Spanish sailors and a few mounted chiefs. By the end of the day, most of the cattle had yielded the fields to the humans. However, one massive long horned white bull and part of his herd refused to be pushed far from the rich sweet potato terraces.

After five days of chasing the cattle through the fields, over innumerable rock walls and through torturous gullies, most of the heifers had been separated, but the bull refused to cooperate. The ship with those first two "Paniolos" left about a week before La'anui finally managed to bait, trap, tie, strangle and sell the beast to a passing fur trader. He knew that if he accepted trade goods for his beef, his prof-

its would be discovered and taken away by the senior chiefs, not to mention exposing that he had committed the capitol offense of rustling the King's kapu cattle.

He could only take specie in trade for his beef, or "pipi" as it was pronounced. By the time the old King died and none of the kapus were reinstated, La'anui had amassed a fortune in gold coin. He did well for the first year of free eating and free trade, selling fresh or salt pipi to the ships passing through the islands. He even had a gang producing hides and tallow for market. Before the haoles took control of the Waimea uplands, La'anui had shipped many head of his cattle to the Waialua land holdings of his wife Pi'ia. They were generally turned loose and kept mauka, more or less out of the farmers' fields. La'anui's Waialua herd later supplied starter stock for most of the chiefs, missionaries and other haoles who began ranching on Oahu during the first half of the 1800s.

Of course, once the ranchers claimed the kula lands, it became off limits to the Maka'aina, who had always had gathering rights for mauka products and grass thatch for their hales.

Hale'iwa Art Walk

Last Saturday of every month

6:00 p.m. - 9:00 p.m.

Hale'iwa Town

Free Youth and Family Fishing Photo Contest

The Hawaiian Islands Humpback Whale National Marine Sanctuary and Conservation International's Hawaii Fish Trust in partnership with the Sportfishing Conservancy, will host the 2013 Sanctuary Classic—a free fishing photo contest designed to promote recreational opportunities and reward sustainable fishing in America's National Marine Sanctuaries. The nationwide contest opens on World Oceans Day, June 8, and ends on Labor Day, Sept. 2.

While the primary purpose of the National Marine Sanctuary System is to protect the resources of our nation's special places, sanctuaries also facilitate compatible uses including all types of recreation. Most (98 percent) of National Marine Sanctuary waters are open to recreational fishing and provide an incredible outdoors experience. The Sanctuary Classic in Hawaii promotes safe and pono (responsible) fishing practices and perpetuates the transfer of knowledge to sustain our marine resources from one generation to the next. The free event aims to further connect fishers, communities and families with the marine resources.

The Sportfishing Conservancy will award, based on online voting, ten \$100 weekly prizes for the best photos from across the country that show fishing in a national marine sanctuary or adjacent waters. At the end of the summer additional \$1000 prize scholarships

will be awarded for the four pictures that best exemplify youth fishing, family fishing, or conservation in a sanctuary. All participants are required to follow best practices guidelines and federal, state and local regulations. Find out more about local events related to this free photo contest.

This is the second year of the Sanctuary Classic. Support for the event is being provided by national and local partners, including: The National Marine Sanctuary Foundation, The Guy Harvey Foundation, The Sportfishing Conservancy, the Office of National Marine Sanctuaries, NOAA Fisheries Services and West Marine, and Conservation International's Hawaii Fish Trust.

For information on the 2013 Sanctuary Classic and how to enter, visit: www.sanctuaryclassic.org.

Jerry's Pizza

637-8866

Fresh Pizza • Subs • Pasta & Salad!
Delivery in Haleiwa Town & Waiialua
Open 7 days a week • 7 a.m.-9 p.m.

Quality Tile Crafts

"No job too big or small!"

Specializing in Ceramic Tile,
Travertine, Marble, & Slate

Kevin Wilson

cell (808) 864-4985 office (808) 638-8492
www.QualityTileCrafts.com Free Est.

DRAFTPLANS HAWAII

- Over 10,000 floor plans & blueprints available for purchase online. Gather ideas for your own design.
- Drafting Service available for new home designs, additions, renovations, decks, fence, rock walls, etc.
- Free property specifications & title search info.

www.draftplans.com

Call for free estimates:
265-0035



Tubby the Clumsy Bear by Lily Richards age 8



Waiialua & Kahuku schools offer progressive programs for seventh- and eighth-graders

This is the third in a trio of articles offering a glimpse at Kahuku and Waiialua High and Intermediate schools' top-notch opportunities, programs, events and students.

In the 2012-13 school year, students in both schools logged more awards, honors and airline miles by winning the right to compete in prestigious events from the National History Day in Maryland to the Vex Robotics World Championships in California. Here are more ways that these two schools nurture and empower the North Shore area's seventh- and eighth-graders.

Waiialua Intermediate School

The Peer Education class offers students the opportunity to help other students by teaching them about serious issues they may face like drugs and health. Then students create lessons about these topics – for example drug awareness and prevention, and wellness – and present them to classes and at assemblies.

Fun and action describe the Central District Middle School Intramural Program, where students get to participate in basketball, volleyball, soccer and track with children from many other schools.

Kahuku Intermediate School

Honors classes in language arts, science and social studies pave the way for advancement and success. For example, seventh-graders may take algebra I, which readies them for geometry I in the eighth grade.

Great teachers are essential for academic achievement. The proof is evident in the Hawaii State Assessment scores, which show that reading proficiency increased 19 percent for eighth-grade boys in 2012 compared to the previous school year, while overall scores for both grades improved. In math, seventh-grade girls' scores increased 17 percent while overall scores for both grades rose.

Seventh- and eighth-graders have the opportunity to participate in wide-ranging activities, and do so in large numbers, including in the Film Club, a benefit made possible because Olelo Community Media is stationed on campus. Kahuku has leadership training in peer education, and active participation in the Surf Club and math competitions as well as Cheerfest and the Homecoming Court and parade.

Kula Kaiapuni Hawaii 'O Kahuku Academy is specially designed to let students continue their education in the Hawaiian Language Immersion Program. This institute is culturally relevant and significant, and unique to our state.

To enroll your child for the 2013-2014 school

year and for more information, call Waiialua High and Intermediate School, 637-8200, or Kahuku High and Intermediate School, 293-8950 ext. 241.

Students to Compete at the 2013 National History Day

Thirteen Kahuku Complex students in grades 6-10 from Laie Elementary and Kahuku High and Intermediate qualified at the 2013 Hawaii State Competition on April 20th to compete in the 2013 National History Day (NHD) Finals June 9 - 13th in the Washington D.C. area. This is a great honor for themselves and for their Windward District community schools. Close to a thousand Kahuku Complex students participate in this extraordinary program each year.

The potential to be a finalist at National History Day drives the high level of academic rigor of this program. Students work several months on their projects: writing historical essays, creating documentaries, exhibits, websites, and performances. This work involves months of historical research outside of the classroom, creating an arguable thesis that focuses on the annual theme, and supporting this thesis through the analysis of primary and secondary source material. Students interview community members who are primary sources, local historians, and synthesize historical data from dozens of sources into their projects.

Funding for the trip to Washington D.C. has been provided in part through the generosity of the Harold K.L. Castle Foundation Windward Youth Leadership Fund which provided a \$5000 grant. This involved a service project organized by the Kahuku Complex student finalists which they called, "Give Back to your Teacher Day." The student Finalists enlisted more than 300 students to volunteer after school assisting teachers at Kahuku High and Intermediate and Laie Elementary School on the last two days of school closing down their classrooms. More than 500 hours were spent cleaning classrooms, packing and moving boxes, taking out rubbish, and picking up litter on both campuses. Turtle Bay Resort also generously donated \$1300.

The opportunity and preparation to compete at the national level at NHD contributes to students' critical thinking skills, reading comprehension, writing skills, team building and leadership skills. It contributes to their successful performance in all of their courses. The skills developed through this participation positively impact students' success in college, future occupations, and professional leadership skills.



NORTH SHORE CHAMBER OF COMMERCE
VOLUNTEERS
WANTED

GET INVOLVED • STAY CONNECTED • SUPPORT YOUR COMMUNITY

NAME: _____ I'M INTERESTED IN VOLUNTEERING FOR:
(PLEASE CHECK ANY/ALL THAT APPLY)

DAYTIME PHONE: _____ VISITOR CENTER

EVENING PHONE: _____ ADMINISTRATIVE HELP

EMAIL: _____ PUBLIC RELATIONS

DAYS/TIMES AVAILABLE: _____ WEB SITE

HOURS PER WEEK AVAILABLE: _____ HISTORICAL TOUR GUIDE

_____ MEMBERSHIP MEETINGS

_____ BUSINESS EXPO

_____ CHRISTMAS PARADE

_____ CHRISTMAS PARTY

_____ OTHER:

TO VOLUNTEER, COMPLETE AND RETURN THIS FORM TO THE
 NORTH SHORE CHAMBER OF COMMERCE • 66-434B KAMEHAMEHA HWY. • HALEIWA, HI 96712
 OR CONTACT US AT 808-637-4558 (PHONE) • INFO@GONORTHSHORE.ORG (EMAIL)

GONORTHSHORE.ORG

WAIALUA FARMERS' COOPERATIVE MARKET

HISTORIC WAIALUA SUGAR MILL GROUNDS
 Saturdays 8:30am - 1:00pm

- Buy Directly From Our Local Farmers
- KAHUKU FARMS
 - WAIALUA FRESH
 - DEL TROPICAL FLOWERS
 - T & L FLOWERS AND PALMS
 - WAIALUA COOPERATIVE FARMERS
 - FIELDS OF ALOHA
 - TASTE OUR WAIALUA FOOD PRODUCTS
 - FRANCIS BARBQ CHICKEN
 - NONI FRUIT LEATHER & LOTION
 - KALENA POLYNESIAN FOODS & CRAFTS
 - SOMETHING SPECIAL TARO CAKES & BISCUITS
 - NORTH SHORE GOODIES
 - The original coconut peanut butter AND MORE

A FARMERS' MARKET MANAGED BY FARMERS
 Edith 637-8589

BULLETIN BOARD

BLUE PACIFIC WINDOW CLEANING
 DA BESTEST WINDOW CLEANERS ON DA NORTH SHORE...



"Catch Our Wave" ...FO' SHUA!

808.457.7600
www.bpwchi.com



Ernie Doak Plumbing, Inc.
Quality without Compromise

NEW CONSTRUCTION • RENOVATION • SOLAR
Serving Oahu's North Shore for over 20 years

ERNIE DOAK cell 295-7943
 Lic. #CT-22113 office 638-8620
 Lic. #PJ-10630 erniedoakplumbing@yahoo.com




Offshore Plumbing, Inc.
 License No. C28113

Commercial • Residential
 Septic • Solar • Design

Steve 371-3451 Mike 630-1407
Steve@offshoreplumbinginc.com

www.oahuscreens.com



HOLOHOLO SCREENS, LLC

New window installation Sliding/swinging doors
 New screens/re-screens Screen door roller repair
 Pet proof screens Pet grills and doors
 Porch enclosures Solar screens

FREE ESTIMATES • (808) 783-8764

"THE BULLETIN BOARD THAT IS IN EVERYONE'S HOME"

BULLETIN BOARD



Specializing in vegetarian foods, vegan foods, whole foods, organic food. Wheat free, dairy free, raw foods, gluten free. A complete selection of natural foods for 37 years. Make earth day, everyday. Open 7 days. Mon.-Sat. 9am-6pm. Sun. 9am-5pm

66-445 Kam. Hwy
Haleiwa, Hawaii 96712
Next to the Post Office
808-637-6729 • 808-637-1922 fax



DR. PORTER TURNBULL
Chiropractic Orthopedist
(808) 638-8740
Appointments available Mon.-Sat.
(evenings by appointment)

- Industrial accidents & auto injuries
- Sports injuries • Spinal care
- Safe, Effective, and Gentle

N-C PLUMBING & SUPPLY

Cont. Lic. No. C-8913



- RESIDENTIAL & COMMERCIAL SALES & SERVICE
- CONTRACTING & DESIGN • HOME PLUMBING SERVICE
- PLUMBING FIXTURES, HEATERS • FREE ESTIMATES

Nestor P. Calilao (Owner)
P.O. Box 769
Waialua, HI 96791

Bus: 637-8662
Res: 638-5157
Cellular: 372-8718

email: nncplumbing@hawaii.rr.com



JAY OKU

Senior Mortgage Banker
NMLS # 218211

tel: 808.393.0707 fax: 888.961.8718
email joku@envoymortgage.com
www.jayoku.com



Restaurant & Margarita Bar

- DAILY SPECIALS -

Island Fresh Fish Tacos
Premium Margaritas

Large Parties Welcome Open Daily 9:30am - 9:30pm
637-3059 • North Shore Marketplace • Haleiwa
www.CHOLOSMEXICAN.com



COWPER CONSTRUCTION

LIC. #AG 18275

GENERAL ENGINEERING CONTRACTOR

Full Service Sitework
Contractor

Septic Systems & Tanks
25 yr. exp.

Michael Cowper 638-7200
cowperhawaii.com



Factory Showroom also available
... Lost, South Point NSP & Accessories
Located at the Sugar Mill
638-0050 • 366-2282
www.SCHAPER-HAWAII

Traditional Lomilomi

"Respected in the Hawaiian community for her art"

— Francine Dudoit, Director of Native Hawaiian Healing Waikiki Health Center

Open daily next to Haleiwa Giovanni's across from McDonald's. Walk-ins welcome.
(50+ years experience)

Christina mae2542 295-1786

Munden Design & Build

Lic.#BC19632

Design • Plans • Permits • Construction
Additions & New Residences

808 391-8616

Providing quality work since 1978

J.B. TILE & CARPET

JOHN BURTCH

Free estimates
25 years experience
(808) 226-1023





Coffee!
You can sleep when you're dead!

6:30AM - 8:00PM
NORTH SHORE MARKETPLACE
WWW.ROASTMASTER.COM



North Shore News

2013 Schedule

PUBLICATION DATE	EDITION	DEADLINE DATE
July 10	#14	June 27
July 24	#15	July 11
August 7	#16	July 25
August 21	#17	August 8
September 4	#18	August 22
September 18	#19	September 5
October 2	#20	September 19
October 16	#21	October 3
October 30	#22	October 17
November 13	#23	October 31
November 27	#24	November 14
December 11	#25	November 29

Direct-Mailed to Every Home
 MOKULEIA • WAIALUA • HALE'IWA • KAHUKU • LAIE
 Every Other Wednesday
 12,000 copies

"The North Shore's most popular publication" since 1970
 (808) 637-3138 • NShoreNews@aol.com

MAHALO!
 From the
North Shore Food Bank
 donations of non-perishable
 canned
 goods are accepted at the
 North Shore News Office
637-3138




Our next service at Hale'iwa Beach Park

Sunday, June 30
 9 Year Anniversary



Trish Coder Photos

Lunch for everyone at 12 noon!

SURFERS, SAINTS & SINNERS ARE WELCOME!

OAMC is a community outreach made possible by many generous supporters and volunteers. If you would like to support or volunteer for the OAMC call 690-0377.

The OAMC is scheduled to meet on the last Sunday of every month (except May & December).

"There will always be poor people in the land. Therefore I command you to be open handed toward your brother and toward the poor and needy in your land." (Deuteronomy 15:11)



The North Shore News is published every other Wednesday and mailed free of charge to all North Shore homes and businesses. Extra copies may be obtained at our office.

PRESS RELEASE POLICY: Submit press releases in person or by fax, mail or email to Editor, North Shore News, 66-437 Kam. Hwy., Suite 210, Haleiwa, HI 96712. Please type your releases and keep them shorter than 200 words unless they are of an unusual news interest. Releases should be viable news stories and are published on a **space available basis only**, with priority given to those received in our office first. You may attach photos. We are not responsible for the return of any photos. All materials are submitted at owner's risk. We reserve the right to edit and/or refuse all submissions including advertising.

EDITORIAL POLICY: We welcome articles and letters from our readers. Letters to the Editor are published on a space available basis only and preference is given to shortness of length, and quality of content. We prefer to run not more than one letter, per person, per 6 month period. Letters subject to edit.

Views expressed by our contributing writers and advertisers do not necessarily reflect the view of the management and staff of the North Shore News. All rights reserved. Reproduction in whole or part without permission is prohibited. © 2013.

Editor & Classifieds

Linda Seyler

Typography

Downtown General Store

Contributing Writers

Betty Depolito
Naty Hopewell
Choon James
Kalewa

City Councilman Ernie Martin
State Representative Lauren Cheape
State Representative Richard Lee Fale



Please recycle this newspaper.

CLASSIFIEDS

SERVICES

SHORE ELECTRICAL SERVICE

New Const-Remodels
638-0049 / Lic#C20777

Dog/Cat Nail Trimming

at your home only \$15.00
Call Julie 637-5395

Lawn Care For You

Mowing, Trimming, Light Hedging
Call Thomas 637-5839

EXPERT ELECTRICIAN

Fans, emergency services, etc.
Jim Richards 371-9369

PARADISE PLUMBING INC.

New Const • Repairs • Remodels
808-368-1473 / Lic. 29856

Handyman Services

Remodeling, Carpentry, Floors,
Concrete, all parts of Construction
Call Bob "The nicest guy in the
business" Ph. 282-2812

Greekz Plumbing LLC

Complete Service & Repair
Camera inspection/drain cleaning
"Got a leak? Call Steve the Greek"
808-372-1820

Haugan Construction LLC

Build & Repair • Big & Small
Let's Talk
Steve 542-9269

DILLON CUSTOM SIGNS

Storefronts & vehicles
Haleiwa 499-9582 20+yrs exp

North Shore Pumping

Septic and Cesspool Service
Clifford 638-0900 • 291-5099

Computer Problems?

I can fix any MAC or PC.
Chris 371-3089

Paumalu Electric Inc.

Now installing Solar PV Systems
Permit, panels, roof installation,
electrical tie in. Free estimates.
Dave Hancock 638-9054
Lic. C18074

HARVEY'S REPAIR, LLC

24 hrs Towing Service
Specializing in opening
locked car doors
Call any time 478-0333

GERMAN CAR SERVICE

Professional-Qualified
Technician
Call Gary
637-6800

SHIATSU • LOMI

Aromatherapy
Milica Barjaktarovic
Lic # MAT8348
351-0848
HumanRemodeling.com

BOW WOW BUNGALOWS

Licensed Boarding Kennel
North Shore, Oahu
Reasonable Rates
Ph. 637-2562
These Dogs Have Fun!

LEARN TO SWIM

AT THE

HAWAII SWIM SCHOOL

ON THE NORTH SHORE
Developing swimmers since 1982
Haleiwa Rd. at Smiley Place
637-4863

BIKRAM YOGA

Hot Summer Special
3-months \$300.
July 1 - Sept. 30
637-5700

Your Clean Home

Vacation/Residential
Home Cleaning

Affordable • Reliable

• Green Cleaning

For Free Estimate

Call 638-0262 or 782-9941

BOBBY'S BODIES

Tuesday evenings at 5:00 p.m.

• Body Toning

Friday mornings at 9:00 a.m.

• Cardio Pump/Fat Burner

For more info: call Bobby, owner of
BOBBY'S BODIES at 637-4150

Aloha Computer

PC Repair/Virus Removal
Fax/Copy/Internet Access
372-2667 or 237-4558

REAL ESTATE NEEDS?

Call me . . . Dee,
Your NS Realtor
Dee-Ann KML
Kekahuna, RA
808-780-3249

Statewide Hotline for Litter

1-888-592-2522

Callers need to provide:

1. License plate number
2. Make and model of vehicle
3. Date and time and location
4. What was thrown/blown

For Advertising Rates
Call 637-3138 or go to
www.northshorenews.com

2013 Operation: Backpack
Please help our disadvantaged students with
a new backpack & needed school supplies.
See page 5

HOW TO CONTACT THE NORTH SHORE NEWS

Letters to the Editor, and other items submitted for publication consideration may be sent to us via:

MAIL: 66-437 Kamehameha Hwy., Suite 210, Hale'iwa, HI 96712

E-MAIL: NShoreNews@aol.com • FAX: (808) 637-8862

PHONE: (808) 637-3138

Office Hours: Monday-Friday 10 a.m.-3 p.m.

www.northshorenews.com

CLASSIFIED ADS

Next Issue - July 10, 2013
Deadline Date-June 27, 2013

GUTTER KING, LTD.
 Rain Gutter Systems
 Seamless Aluminum & Copper
 Half round & Custom sizes
 "senior, military discounts"
638-7246

J&L Services Haleiwa
 Quality Landscape and
 Garden Maintenance. Also
 Pressure Washing, Hedges
 and Plant Installation.
 Call 673-1384 for est.

ANGELS PLUMBING
 Repairs
 Remodeling
 Renovation
638-7878
 Lic. #C12004



THE LAWN RANGER
 Lawn Maintenance
 no yard too hard
 no lawn too far gone
 We mow betta
 258-6439 Dan Fatchett



Business Services Center
 Fast & convenient fax, copy,
 scan, computer/internet,
 laminate, etc.
 Across from Haleiwa post office.
 637-4558 or GoNorthShore.org



Marianne Abrigo, Properties
 Specializing in -
 North Shore
 Real Estate
 Ask for our list of avail-
 able properties and/or a
 free market analysis.
Marianne M. Abrigo
 "Realtor since 1974"
Office 637-3511
Fax 637-0777
Email mabrigo222@aol.com

Golden Rule Lawn Care
*Mowing, weed whacking,
 hedge trimming, rake up,
 light weeding & haul away.*
Call Matt 269-5020

NORTH SHORE AUTO DETAILING
 Package #1 • \$50.00
 Wash, wax, vacuum interior,
 dress interior, dress tires
 Package #2 • \$70.00
 Wash, wax, water spot removal,
 vacuum interior, dress tires
 Vans, SUVs, Custom 4 Wheelers,
 Glass water spot removal, extra (all packages)
 Price may change on the condition of vehicles
 interior and exterior
 We are mobile we come to you
 Call Billy 371-0854 or DJ 492-5887

ZUMBA by Coco
 Colleen Aricayos Sabarre
Congratulations Class of 2013
 Graduate Special! Free Wednesday!
 June 2013 only • 6pm-7pm
 WCA (Haleiwa Gym)
 Pls present your school graduate photo or
 \$2.00 at the door. Shoes required.

OPERATION: BACKPACK
 see page 5

HELP WANTED
BUSSERS/SERVERS
 Pizza Bob's in Haleiwa is looking
 for BUSSERS/SERVERS. Experi-
 ence preferred. Apply in person
 at 66-145 Kam. Hwy.

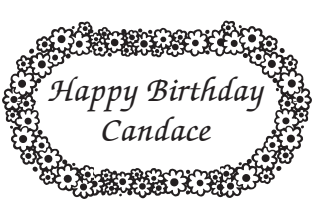
COOKS/KITCHEN HELP
 Pizza Bob's in Haleiwa is looking
 for kitchen personnel. Experi-
 ence preferred, but will consider
 training the right people. Apply
 in person at 66-145 Kam. Hwy.

Part Time Secretary
 Must have computer skills
 and high speed internet
 access.
 Fax resume to 638-7643

Retail Sales Surf & Sea
 Hawaii's Ocean Sports Headquarters
 is always looking for hard working,
 energetic people to become a part
 of our sales team. Good pay, bonus,
 benefits. Ocean sports experience
 and/or bilingual a plus. Apply in
 person daily 9am-7pm
 62-595 Kam. Hwy., Haleiwa

MISCELLANEOUS

Historic Sugar Mill
 Photos for Sale
 Featured in the last 06/12/13
 North Shore News
 plus more!
 (808) 469-5256 Melvin



BEACH CLEAN UP
 Chun's Reef - 10 a.m.
 637-2211
 Last Saturday of every month
 adoptabeachhawaii.org

North Shore Farmers Markets
 Haleiwa: 3 p.m. to 7 p.m.
 Thursdays, at Waimea Valley,
 Pikake Pavillion & Lawn.
 Waialua Sugar Mill: 8:30 a.m.
 to noon Saturdays.
 North Shore Country Market:
 8 a.m. to 2 p.m. Saturdays,
 Sunset Beach Elementa-
 ry School, 59-360 Kame-
 hameha Hwy.

Keep it Country
 To report **ILLEGAL VACATION RENTALS**
 call 768-8159 or 768-8118
 You will remain anonymous
Illegal Vacation Rentals are ruining the North Shore
 www.savenorthshoreneighborhoods.com

OFF da ISLAND
 Are you leaving Oahu on vacation or
 business? Do you live on a neighbor
 island, the mainland or foreign coun-
 try and subscribe to the North Shore
 News? Try send us a photo of someone
 in front of a sign or landmark holding
 a copy of the NSN. Email your photo
 along with the person or persons'
 name, community of residence, tele-
 phone number and photo location to:
 NShoreNews@aol.com. Or, mail to
 OFF da ISLAND Photo, North Shore
 News, 66-437 Kam. Hwy., Suite 210,
 Hale'iwa, HI 96712. We cannot return
 photos so please send us a copy. Photos
 received become the property of NSN.
 Preference and priority will be given to
 emailed photos.

Talk Story Camp
 July 19-21, 2013 @ Camp Pamalu
 (North Shore, Oahu)
 Come to 3rd Annual Talk Story Camp:
 3 days & 2 nights of stories at Camp
 Pamalu (North Shore); a convergence
 of storytelling folk & families retreating
 into the hills of Pupukeya! Awesome
 international, national & local tellers,
 good food; hikes, North Shore lore
 & campfires under stars! Adult & kid
 sessions. Story Concerts; workshops to
 create & critique, share & tell tales day
 & night! Related shows before & after camp,
 and it's all cheap too! Activity schedule,
 teller profiles, and lotsa pictures at www.
 talkstorycamp.com. More information:
 jeffgere@lava.net (808) 737-1774

Classified Ad Rates
 3 lines (min.) \$18.89
 4 lines \$25.13
 5 lines \$32.45
 1" Box Ad \$41.88
 (29 characters in each line)
 Include your contact information.
 *Ads can be dropped off in mail slot,
 mailed, or emailed. Pay by check pay-
 able to: North Shore News or credit
 card by phone order.
 We reserve the right to refuse any
 advertisement with a full refund.
 North Shore News • 66-437 Kam. Hwy.,
 Suite 210, Haleiwa, HI 96712
 • (808) 637-3138 • NShoreNews@aol.com

Voice of God Ministries
 Jesus Loves You
 If you need Prayer
 Call 808-373-0294

Ho'ola Like Waikiki Health
 Center's North Shore
 Clinic Queen Liliuokalani
 Church 8:30am - 3:30pm,
 Tuesday and Thursday

Please Report Stranded Sea Turtles
 Call 983-5730 • Mon.-Fri., 7am-4pm
 288-5685 pager wkends, holidays
 587-0077 and after hours
 Suspected Law Violations
 541-2727 or 800-853-1964
 NOAA Fisheries DLNR-DOCARE

Blood Bank of Hawaii
 Saturday, June 29
 Laie Shopping Center
 Bloodmobile
 www.BBH.org

Kahuku Library Movie Matinee
 Friday @ 12 noon
 June 28:
 Bee Movie (PG)



MALAMA MARKET HALEIWA:
OPEN DAILY 7 AM-9 PM
808.637.4520

MALAMA MARKET MAKAILO:
OPEN DAILY 6 AM-10 PM
808.672.9955

Valid Dates:
6/26/13-7/2/13

Castle Rock
Red Seedless
Grapes

\$1⁹⁹
PER LB.



Best Yet
Charcoal
Selected
Varieties,
6.7-8.3 lbs.

\$6⁹⁹



Maruchan
Instant Lunch
Selected Varieties,
12/2.25 oz.,
Case Sale Only!

\$5⁹⁹



Pepsi
Selected Varieties,
24/12 oz.

\$6⁴⁹
EACH

When You Buy 2



Boneless
New York
Strip Steak
Value Pack

\$6⁹⁹
PER LB.



Malt-O-Meal
Cereal
Selected Varieties,
11.5-16.5 oz.

2/\$5



Gourmet
Cookies
Selected Varieties,
7 ct.

\$1⁸⁹
EACH



Freshly Made

Ahi Poke
Selected Varieties

\$12⁹⁹
PER LB.



Totino's
Party Pizza
Selected Varieties,
9.8-10.9 oz.

10 FOR \$10



Fresh
Fruit Salad

\$3⁹⁹
EACH



Dasani
Water
24/500 ml.

\$4⁹⁹



Dreyer's
Ice Cream
Selected Varieties,
48 oz.

2/\$7⁵⁰



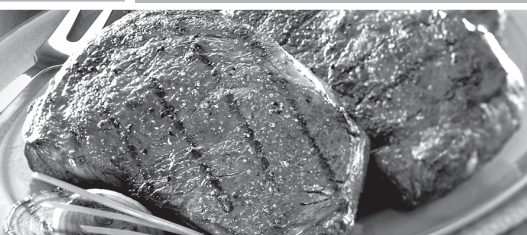
Heineken, Corona,
Stella Artois,
or Sierra Nevada
12 Pk. Bottles

\$13⁸⁸



THURSDAY

INCLUDES:
7-8 oz. Steak
Rice • Tossed Salad • Drink



Grilled Steak
LUNCH
\$6⁹⁹

Hawaii Beverage Fee of 1¢ per can or bottle will be added to purchase price at checkout. An additional Hawaii Deposit fee of 5¢ will be charged for all specially marked beverage containers.

Limit five units (mix/match) per purchase, unless otherwise specified. We reserve the right to limit quantities. No sales to dealers. Prices plus applicable state tax. Hawaii EBT cards welcomed.