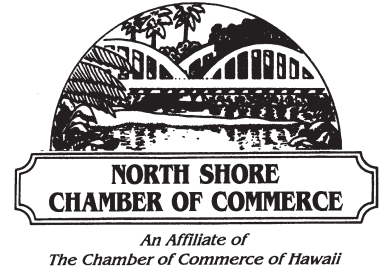




**"E Ala Na Moku Kai Liloloa"**

North Shore  
Chamber of Commerce  
**5th Annual  
Business Expo**

See pages 18 & 19



NORTH SHORE NEWS April 3, 2013 VOLUME 30, NUMBER 7



**Hawaii House of Representatives to honor  
Kahuku High School teams for exceptional athletic  
and academic achievement**

Two Kahuku High School teams were recognized on March 18, 2013 at the Hawaii House of Representatives Chamber for outstanding achievement.

Representative Richard Fale (District 47) offered the floor presentation commending Kahuku High School State Champion teams for athletic and academic performances. The 2012 Division I State Champion varsity football team earned a perfect 12-0 record and continues Kahuku's strong football tradition of excellence. Additionally, the school's "We

the People: The Citizen and the Constitution" team won the state competition of the educational civic engagement program.

Six of the past eight NFL Super Bowls have featured a Kahuku High School graduate. The team is gaining a national reputation for producing standout college and National Football League (NFL) players.

"We the People" encourages critical thinking about civics by requiring students to submit essays and face a live panel of judges to test their knowledge of the

U.S. Constitution. The team will go on to represent Hawaii at the national finals in April in Washington, D.C.

1st photo: Representative Morikawa, Principal Donna Lindsey, Athletic Director Gillian Yamagata, Coach Reggie Torres and "We the People" advisor Jan Harney.

2nd photo: Representative Richard Fale with a Kahuku Red Raiders cake for the honorees.

**Congratulations  
Kahuku Red Raiders**

PROUDLY PUBLISHED IN  
**Hale'iwa, Hawai'i**

*home of the  
Wai'alua Community Association*

66-437 Kamehameha Hwy., Suite 210  
Hale'iwa, HI 96712

PRE-SORTED  
STANDARD  
U.S. POSTAGE PAID  
Honolulu, Hawaii  
Permit No. 1479



## OFF da Island in Rishikesh, India

Sunset Beach beauty Noelani Love pictured in front of the Shiva Statue, recently visited Rishikesh, located in the foothills of the Himalayas in northern India. Rishikesh is also known as “the gateway to the Himalayas” and nicknamed “the world capital of Yoga”. After a day of Kundalini Yoga teacher’s training course, Noelani relaxed with a copy of the North Shore News to remind her of the good times on Oahu’s beautiful North Shore. For information on the OFF da Island campaign turn to page 23.



**BANZAI PRODUCTIONS**

**Video - Media  
Need Web Video  
Ask About Our  
Special Rates**

**808-781-2535** 

**We've Moved**  
66-037 Kam. Hwy., Ste. 3  
Haleiwa, next to Growing Keiki



**Saccoccio & Lopez**  
ATTORNEYS AT LAW  
*Serving Haleiwa since 1984*

*Bankruptcy  
Personal Injury • Criminal Law  
Landlord/Tenant  
Traffic Offenses • DUI*

**Family Law**  
*Adoption • Custody • Divorce  
Paternity • Guardianship  
Deeds, and Wills*

**637-7611**  
VISA/MC Accepted

*Paul & Nita*

**The Hale'iwa Family Dental Center, Ltd.**



presents  
**"Comfort Dentistry"**  
including—

- Relaxation Glasses
- Television Glasses
- Caring Staff
- Special Medication to help you relax
- Laser Cavity Detection
- New Patients Welcome!

Your teeth are much too important to neglect.

**Call: 637-9652**  
for your reservation

We're conveniently located behind First Hawaiian Bank  
in the heart of Hale'iwa.



**April 20<sup>th</sup> | Surfer, The Bar at Turtle Bay Resort**

**Doors @ 7PM, 21+**

TICKETS AVAILABLE AT:

[www.groovetickets.com](http://www.groovetickets.com) / [www.bampproject.com](http://www.bampproject.com) /  
& Local Motion Stores.




To learn more about Surfer, The Bar, check out [www.surferthebar.com](http://www.surferthebar.com) If you are not familiar with DALA's music, visit their website at [www.dalagirls.com](http://www.dalagirls.com).



**OPENING APRIL 4<sup>th</sup> >>**

The North Shore Kula Grille will feature an innovative menu that features locally sourced cuisine as part of a farm-to-table focus that incorporates the rich agricultural history of the North Shore.

Visit [turtlebayresort.com](http://turtlebayresort.com) for more details.



See it. Hear it. Feel it.  
*Like never before.*

**Journey back to a bigger and better Polynesia.** See “**Hawaiian Journey**,” our new cinematic experience—with astounding images and special effects—that will engage your senses. It’s an epic tale, passed down from Hawaiian ancestors, about their connection to the ‘āina. Plus enjoy new “Go Native” activities and our renovated **Hawai‘i Village**.

**REDISCOVER POLYNESIA**

**Kama‘āina Special**

**\$15 GENERAL ADMISSION** (reg. \$49.95)



Limited time offer. Some restrictions apply. Must have valid Hawaii ID. Closed on Sundays.

[PCCCKamaaina.com](http://PCCCKamaaina.com)

## Waialua General Store

Across Waialua Post Office  
Next to Laundromat

### Onolicious

Steak Plate Special  
with FREE Soda  
Wednesdays \$7.95

Most Delicious Homemade Filipino  
Food & Deserts on the North Shore  
EVERY DAY

Business Hours: 10 a.m. – 7 p.m.  
7 Days a Week

Phone: (808) 637-3131



## The US Air Force Band of the Pacific

presents

*A seven member group  
Playing classic &  
contemporary Jazz*

Sunday, April 7, 2013  
4:00 p.m. - 5:30 p.m.  
Waialua Bandstand  
in the Park

Bring your lawn chairs and come enjoy  
an afternoon of music.



**Council Chair**  
**Ernie Martin**  
 Serving You in District 2

**now is not a good time for a gas tax increase**

An indisputable element of success for a company, an organization or a novel idea is good timing. The critical timing of an investment can mean the difference between bonus and bankruptcy. Government operations are also impacted by this rule of success. Mayor Caldwell served as the City's Managing Director and previously as the House Majority Leader before becoming the chief executive officer for the City. He knows that budget deliberations are critically affected by timing. A robust economy can justify program expansion or a hefty increase in capitol improvement projects, but an economic downturn can make even the most practical public works project look like an extravagance. Such was the case with the Mayor's proposal to increase the fuel tax by 5 cents a gallon. The Council is very supportive of restoring full bus service and no one would really argue with the Mayor's ultimate goal of upgrading the city's infrastructure. But only \$3.5 million of the \$15 million generated by the tax increase each year was to go to funding full bus service. The rest would have been used to cover part of the debt incurred by borrowing \$750 million dollars for road work over the next five years. I am reminded of a similarly ambitious plan in 2009 when a proposal for \$150 million dollars of city road work to be completed over a period of 18 months was announced. Except for the press release, there is little evidence remaining that it was once a goal of the city administration. There is now serious doubt that the city would be able to execute contracts for such an extraordinary amount of road repair and maintenance, yet all the while Oahu drivers would be paying the highest gas tax in the country. At a recent budget briefing, testimony from the Department of Design and Construction on existing balances for prior fiscal years revealed that only \$1 million of the \$100 million appropriated by the Council for road repair last year has been spent to date, nine months into the fiscal year. If suspicions about the city's ability to manage such a large scale project were not reason enough, the current economic climate makes it just about the worst time to suggest raising taxes. Hawaii is already among the top ten states with the highest taxes on the poor. Moreover, low- and middle-income families pay a higher percentage of their income on gasoline and typically have the longest commutes to work. Although the Mayor contends that the average motorist would only have to pay \$21.45 more a year with the increase, the actual amount would

surely be higher as all consumers would have to bear the corresponding increase in the cost of doing business on Oahu. While the fuel tax increase was born of good intentions, bad timing resulted in an early rejection of the impractical and unpopular proposal.

**Save A Life & Adopt-A-Beach Hawaii**

North Shore-Monthly Beach Clean-up Schedule: 2013

12 years of monthly documented marine debris in Hawaii

Websites: [www.adoptabeachhawaii.org](http://www.adoptabeachhawaii.org)  
 & [www.seaturtlesinternational.org](http://www.seaturtlesinternational.org)

Meeting place: 61-529 Kamehameha Hwy, Haleiwa, Chun's Reef, (North Shore)

Look for the big signs on Kam. Hwy. - (1/2 way between Waimea & Haleiwa Town)

Time: Starts 10:00 a.m.

Last Saturday of "EVERY" month!

Rain or Shine - if safe!

(Dangerous waves or flooding will result in cancellation)

Volunteers provided with trash bags, water, safety vests and gloves.

2013

APRIL 22 - EARTH DAY

APRIL 27

MAY 25

JUNE 29

JULY 27

AUGUST 31 - END KEEP HAWAII BEAUTIFUL

SEPTEMBER 15 - INT'L COASTAL CLEANUP

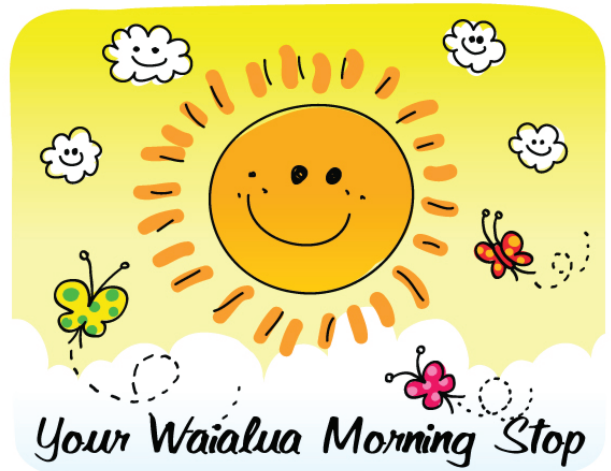
SEPTEMBER 28

OCTOBER 26

NOVEMBER 30

DECEMBER 28

**YOU ARE MY SUNSHINE!**



Open from 5:30AM Daily  
 Try our premium Mt. Kaala  
 coffee and get your favorite  
 freshly-baked pastry!

**Paalaa Kai Bakery**



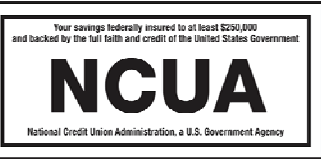
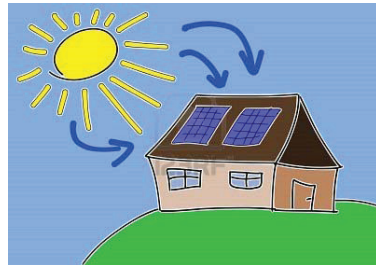
**WAIALUA**  
Federal Credit Union



**Looking to install Solar Photovoltaic?  
Consider a Home Equity Loan from Waiialua FCU.  
No closing costs and a low interest rate can help you on  
your way to lowering your electricity bill.**

**Current HELOC Rate is 3.75% APR\***

\*Annual Percentage Rate based on an index of 3.50% plus the monthly average of the 26 week Treasury Bill (Auction High) and may be adjusted annually each March. Please call for more details.



You are eligible to join if you live or work in Waiialua or Haleiwa.

Phone: 637-5980 Located in the Waiialua Shopping Center



**Is your child struggling with:**

- Motivation in school?
- Maintaining healthy relationships?
- Showing empathy for others?
- Respect for peers and adults?
- Communicating their feelings?
- Demonstrating appropriate boundaries?
- Showing confidence in themselves?

Join us for **HORSE PLAY!** We will work with your child to improve many areas in their life by working with horses in creative and fun activities.



Hawai'i Equine Assisted Reflection & Therapy  
**(808) 561-4184**

Register your child today at [www.hearthorses.com](http://www.hearthorses.com)

**SIX SPECIAL NIGHTS**

**MONDAY**  
**\$2.95 BEER**  
BOTTLES & DRAFT

**TUESDAY**  
**\$5.00 OFF PIZZA**  
REGULAR OR LARGE

**WEDNESDAY**  
**SALAD NIGHT**  
1/2 OFF SALADS

**THURSDAY**  
**\$3.95 NIGHT**  
\$3.95 SLICES,  
SALADS, MAI TAI'S,  
WINE & BEER



**SATURDAY**  
**\$4.50 NIGHT**  
\$4.50 SLICES,  
SALADS, MAI TAI'S,  
WINE & BEER

**FRIDAY NIGHT \$7.50 BURGER & FRIES**

Dine In Only - 4:00 PM Until Closing - Haleiwa Town Center - 637-5095

**PLUS \$2.00 Off with this Coupon**

Some Restrictions Apply. See Restaurant for Details.  
When Ordering Regular Priced Items. Good Anytime. One Coupon Per Person.  
Can Not Be Combined with Other Discounts. Expires 05/31/2013.

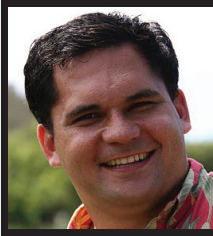


Happy Hour  
Monday ~ Friday  
3 p.m. ~ 6 p.m.  
Bar & Bar Area

Lunch 11 a.m. to 4:30 p.m. • Dinner 4:30 p.m. to 9 p.m.  
Sunday Brunch 9 a.m.

*Jameson's by the Sea  
located on Oahu's Northshore  
at 62-540 Kam Hwy*

Info and Reservations  
808.637.4336



**State Representative**  
**Richard Lee Fale**  
**Serving You in District 47**

**FIGHTING TO KEEP  
 THE COST OF LIVING DOWN**

We are at the midpoint of the 2013 legislative session. My concern is for the members of my community and for all struggling families in the State of Hawai'i that are just trying to work, put food on the table and keep a roof over their heads. We live in the most isolated state in our nation, as an island state the majority of our food and energy must be imported which accounts for the high cost of living in the State of Hawai'i. I feel it is the responsibility of government to do its part to keep taxes down and help out the many people in our state that are living from paycheck to paycheck.

There is some good news; HB 694 passed out of the House and is currently in the Senate. HB 694 will repeal the increase in tax that resulted from Act 60 (in 1990) by changing the sunset date from December 31, 2015 to December 31, 2014. This means tax rates will be reduced one year sooner than current statute.

There are some bills that I voted against that I am happy to report did not move forward to the Senate. These bills would have increased taxes, fees and the overall cost of living for the people of Hawai'i.

HB 1368 – This bill would have increased the general excise tax in our state. Hawai'i has no sales tax; instead we have a general excise tax which is a pyramiding tax that is charged for every good and service in our state. This hurts the poor the most since it includes food and medicine. I opposed this measure which was defeated in the House.

HB 357 – This bill charges a 10 cent fee for each single-use checkout bag used. There are a few exceptions to this rule. The fee may also increase to 25 cents in 2016 if the Department of Health does not find a reduction of single-use checkout bags. I opposed this measure which was defeated in the House.

Here are some of the bills that are from the Senate that the House is now considering.

SB 345 – This is a bill that raises, "fees related to portable electronics insurance licenses." The fee is currently \$150. Surprisingly, the fee may be raised to \$5,000. This is a fee that will be paid by electronics retailers in Hawaii. Therefore, the fee will be passed on to consumers. I opposed this measure.

SB 1133 – This bill removes the exemption for dietary supplement beverages described as, "a liquid which is deemed to be the sole item of a meal or a

diet." My concern is that this measure will impact seniors who often consume these types of beverages. Seniors are also often on a fixed income and this will make it even more difficult for them to pay the bills. I opposed this measure.

If you would like to contact us, please call 586-6380. You can also email us at, repfale@capitol.hawaii.gov or visit us at the Hawai'i State Capitol, 415 South Beretania St., Room 319.

## DRAFTPLANS HAWAII

- Over 10,000 floor plans & blueprints available for purchase online. Gather ideas for your own design.
- Drafting** Service available for new home designs, additions, renovations, decks, fence, rock walls, etc.
- Free** property specifications & title search info.

**www.draftplans.com**

Call for free estimates:  
**265-0035**




## Your Perfect Beach Day Stop!



*Sandwiches, desserts,  
 pastries, cold drinks,  
 coffee and more!*

**Located right next to Paalaa Kai Mini-Mart**

**Paalaa Kai Bakery is.....**  
**Open Daily from 5:30 am - 7 pm**



SURE'S UP!!!!



**Representative**  
**Lauren Cheape**  
**Serving You in District 45**

Aloha,

One of the biggest concerns currently facing our State is how to perpetuate local small businesses. The most direct way that the Legislature can help is by doing everything that it can to lower the cost of doing business within our State. One example of a way that I am trying to address this is through a feed subsidy for fishery operators, aquaculturists, hydro-culturists, ranchers, and farmers of all varieties. As the cost of feed and its shipping continue to rise, and until we develop local sources of feed to serve as an alternative, these farmers are forced to buy feed from the mainland regardless of price. A feed subsidy would immediately lower the cost of production for these farmers which would, in turn, lower the cost of the fish, produce, eggs, and meat that they yield, making it more competitive compared to the imported alternative. This is an example of the type of common-sense solutions that we, as a State, need to be looking for, and it's specifically what I, as a Legislator, am working to achieve.

I don't intend to belabor the point, however, I cannot adequately stress how crucial it is that you submit testimony on Bills that are of importance to you. Public testimony is the Number One resource that Legislators utilize to inform their decisions. State law requires just forty-eight hours public notice of upcoming committee hearings, so as you can imagine, it is very easy to lose track of Bills as they move through the legislative process. The best way to stay informed is through the Capitol website, [www.Capitol.Hawaii.gov](http://www.Capitol.Hawaii.gov), where you can sign up for email alerts for when specific Bills that are of interest to you come up for consideration. The Public Access Room (<http://Hawaii.gov/lrb/par>) remains an excellent resource for assistance with this process. As

well, I am more than happy to assist you in any way that I can. Please send me an email at [RepCheape@Capitol.Hawaii.gov](mailto:RepCheape@Capitol.Hawaii.gov) with any questions that you may have. If you would also like to be added to my email list, another great resource to help you stay informed, simply email me indicating your desire to be added and what issues are of importance to you.

Finally, I would like to congratulate Waialua High School's Randiann Porras-Tang, recipient of the 2012 Metlife/National Association of Secondary School Principals Hawaii High School Principal of the Year Award! Mrs. Porras-Tang has shown remarkable dedication to the students at Waialua High and she serves as a prime example for Principals across the State. Mahalo nui loa for everything that you've done for our community and I wish you the best of luck as you continue to enhance Waialua High.

Mahalo,

Representative Lauren Kealohilani Cheape



**YMCA Camp H.R. Erdman**  
**Community Day Free Family Event**  
**Saturday, April 6, 10 a.m.-3 p.m.**  
**YMCA Camp H.R. Erdman**

**69-385 Farrington Hwy., Waialua, HI 96791**

*Enjoy a fun-filled day of amazing activities with family and friends at YMCA Camp Erdman on the beautiful North Shore! Free activities include: The Alpine Tower and High Ropes Odyssey Challenges, Archery, Swimming, Guided Tours of Camp Grounds and Cabins, and more. Admission is free. Food and drinks will be available for purchase. Bring your swimsuits, towels, and sneakers!*

For more info: Call Shantell 808-637-4615

Email: [www.CampErdman@ymcahonolulu.org](mailto:www.CampErdman@ymcahonolulu.org)



## Olakino Maika'i

(Good Health)

by Naty Camit Hopewell

### Transient Global Anemia

Transient Global Anemia (TGA) is a condition characterized by an abrupt onset of severe memory loss of recent events. There are no physical neurological symptoms such as loss of speech or paralysis. The person is alert and has intact intellectual abilities, such as language, reasoning and abstract thinking. However, the person is anxious and seems to be disoriented as to time and place. This attack usually has a duration of 1-8 hours and should not last more than 24 hours. During this period, the person is not able to make new memories resulting in asking the same question over and over. "Where am I? What are we doing here?" At the end of the episode, there is a rapid return of recent memory, although some memory loss can last for months. Since the person loses the ability to "make memories" during the "attack," the person may never be able to recall the episode at all.

TGA was first described in 1956. It has an incidence of 5 per 100,000 people per year and affects people in the 40-80 age range. TGA affects males and females equally. It is diagnosed by excluding other possible disorders, such as mini-strokes, seizures, psychological amnesias and confusional states. Diagnostic tests include CT scans, MRI, blood tests and EEG (brain wave tracing). The TGA diagnosis must fit the following criteria: the episode must be witnessed by someone; there is a sudden onset of amnesia of recent events; no alteration in consciousness; no loss of personal identity; no physical neurological symptoms such as speech impediment or muscle weakness; no history of recent head trauma or seizure; must resolve within 24 hours; and other causes of amnesia need to be ruled out.

What causes TGA? There is no agreement on the cause. However, things that can trigger TGA include physical exertion, overwhelming emotional stress, pain, cold water exposure, sexual intercourse, and maneuvers such as straining. Recurrence of TGA is rare and there is no treatment because it is unnecessary.

## Exploring and developing artistic ideas

T-shirts & ceramic clay, cameras and mousepads: what do they have in common? Find out at the April 18, 2013 Waialua High and Intermediate School's annual art show at the Waialua Public Library. Art instructors Victoria Pescaia and Howard Farrant will present the art works of 30 students at the 6:30 p.m. opening night reception, which includes refreshments. Please join the Friends of Waialua Library in welcoming these students to our library. The exhibit will remain on view until May 16. Please call the library two weeks in advance at 637-8286 if you need a sign language interpreter.

## Free baseball skills contest for boys and girls

Waialua Little League is pleased to invite boys and girls, ages 7 to 14, to participate in the 2013 Pitch, Hit and Run Competition, free of charge, at Waialua District Park, on Sunday, April 7, 2013. Registration begins at noon and competition starts at 1 p.m.

Pitch, Hit and Run, Presented by Scotts, is the official skills competition of Major League Baseball. Players score points throwing strikes, hitting for distance and accuracy off a tee, and on base running speed.

Individual Skill Champions and All-Around Champions for boys and girls in four age groups advance to additional levels of competition, which culminate in the National Finals at the 2013 MLB All Star Game in New York.

All participants must bring a copy of their birth certificate and have their parent or guardian complete a registration/waiver form prior to competing. Eligible player birth dates are from July 18, 1998 to July 17, 2006. The registration/waiver form can be downloaded and more information is available at [www.eteamz.com/waialuaLL](http://www.eteamz.com/waialuaLL)

## Quality Tile Crafts

"No job too big or small!"

Specializing in Ceramic Tile,  
Travertine, Marble, & Slate

Kevin Wilson

cell (808) 864-4985 office (808) 638-8492  
[www.QualityTileCrafts.com](http://www.QualityTileCrafts.com) Free Est.

## OahuMPO is Listening!

OahuMPO would like to hear about your transportation headaches and your ideas for fixing them. Please take a few minutes and complete this brief survey on our homepage, <http://www.oahumpo.org/> and accessing the survey link here.

After you have shared your concerns with us, PLEASE share this information with your friends, family, co-workers, team mates, teachers, students, coaches, bridge partners, babysitter, employees, drinking buddies, club members, etc. The survey will remain open until April 14, 2013. Mahalo!

## 5th Annual YMCA Healthy Kids Day

Saturday, April 13, 2013

9 a.m. – 2 p.m.

Bishop Museum

Bring the whole family and enjoy a FREE fun day learning how to get healthy and fit at the 5th Annual YMCA Healthy Kids Day, Saturday, April 13, 9 a.m. – 2 p.m., at the Bishop Museum.

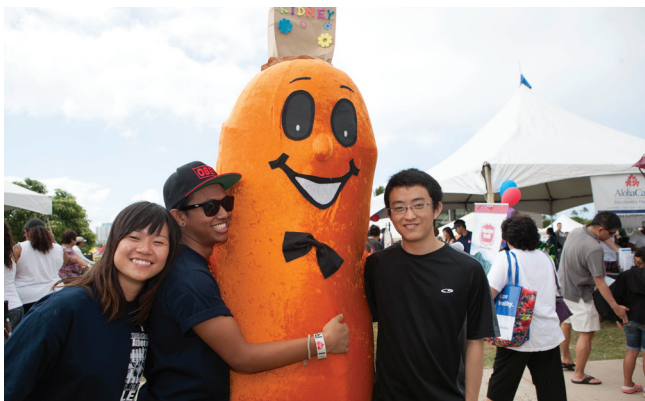
Admission is free for kama'aina and military families and includes free entry into the Bishop Museum's exhibits, newly renovated Planetarium and special Xtreme BUGS exhibit. Attendees may pre-register for the event online at [www.ymcahonolulu.org](http://www.ymcahonolulu.org) to enter through the "Express Entrance" or register onsite when they arrive for the event. Registration opens at 8:30 a.m. Doors open at 9 a.m. Attendees are also encouraged to bring a can of food for the Hawaii Foodbank drive collection at the event.

The event features more than 30 exhibitors highlighting the importance of physical activity, healthy lifestyle choices, and active play through fun, engaging and creative activities.

Kids and family activities include games, a family obstacle course, a YMCA programs fun zone, healthy cooking demonstrations, face painting, free health screenings, exercise demonstrations, non-stop entertainment and prize giveaways. Food and refreshments are available for a nominal cost.

YMCA Healthy Kids Day is sponsored by the Office of Hawaiian Affairs (OHA), ACME Vending Corporation, AlohaCare, Bank of Hawaii, Schuler Family Foundation, HMSA, UnitedHealthcare Community Plan, Hawaii Pacific Health, Kaiser Permanente, Meadow Gold Dairies, Hawaii Dental Services, Hawaii Energy, Precor USA, The Queen's Medical Center and UHA. Media sponsors are Cox Media and Honolulu Star-Advertiser / Midweek. In Kind Sponsors are Aloun Farms, Dole, Hawaiian Isles Water, Honolulu Disposal and Jamba Juice.

For more information about YMCA Healthy Kids Day, call 531-YMCA (9622) or visit [www.ymcahonolulu.org](http://www.ymcahonolulu.org)



Mr. Sidney, the kidney from the Hawaii Kidney Foundation at the YMCA Healthy Kids Day.

## RELAY FOR LIFE 2013

**Help the Ko'olauloa and North Shore community fight back against cancer and join us for our annual Relay For Life of Ko'olauloa!**

FRIDAY, MAY 24 - SATURDAY, MAY 25

6:00 P.M. TO 6:00 A.M.

KAHUKU DISTRICT PARK

Contact Event Chair Don Porter at [rflkoolauloa@gmail.com](mailto:rflkoolauloa@gmail.com) or (808) 548-8444

We're still looking for sponsors, teams and participants, so please contact us today!

Bring your business or family down for an evening full of food, activities, entertainment and more. Join us for an evening to celebrate, remember and fight back against cancer.



## Ko'olauloa and North Shore to rally for hope with American Cancer Society

In 1985, one man who wanted to make a difference in the fight against cancer ran 83 miles in 24 hours. Now 3.5 million Americans, follow in his footsteps by participating in the American Cancer Society Relay For Life. Relay teams from Oahu's Ko'olauloa and North Shore Communities will demonstrate their commitment to end cancer and bring hope and healing by hosting the Relay for Life Ko'olauloa from 6:00 p.m. May 24 through 6:00 a.m. May 25, 2013 at Kahuku District Park.

The overnight activity brings together communities across nearly 50 miles of the North Shore for 12 hours of fun activities, great entertainment and 'ono food. The annual event helps raise money for the American Cancer Society and provides a way for communities to celebrate loved ones who have battled cancer, remember those lost and to come together to fight back against the disease.

Relay for Life Ko'olauloa is looking for businesses, community organizations and individuals to participate in this life-changing event by forming or joining a team and getting involved in the planning of this special event. To learn more, please contact Don Porter, Event Chair, at 808-548-8444 or [rflkoolauloa@gmail.com](mailto:rflkoolauloa@gmail.com) or visit [www.relayforlife.org/koolauloa](http://www.relayforlife.org/koolauloa).



Opening Day Sunday April 7

←≡ KAHANAMOKU TROPHY ≡→

Gates Open 11:00am Game Time 2:00pm

\$10 per person \$8 military

www.hawaiipolo.com hawaiipolo@gmail.com

POLO ≈ TAILGATING ≈ BEACH ≈ MUSIC

## Hawai'i Polo Club announces 2013 season and 50th anniversary of Hawai'i Polo Club

The Hawai'i Polo Club has announced its 2013 polo season which, for the first time, will split the season with a hiatus in mid-summer. The new format is announced as the Club celebrates its 50th anniversary as Hawai'i Polo Club.

The Spring Season launches on Sunday, April 7 and ends Sunday, July 14. The Fall Season begins on September 1st and ends on Sunday, October 27th. All matches occur on Sundays at 2:00 p.m.; gates open at 11:00 a.m. for picnics.

Mike Dailey, president of the Hawai'i Polo Club, stated that the split season allows the polo field and the ponies to recover from the physical impacts of the rigorous sport. It will also offer corporate sponsors the opportunity to purchase half-season sponsorships.

Everyone is welcome to come to the official opening ceremonies and the first match on April 7. The teams playing will be Wealth Strategy Partners against Equus Hotel. Players include familiar North Shore names like Mike Dailey, Chris Dawson, Raymond Noh and Julian Alvarez.

Sky Dive Hawai'i will come sailing down from above during the half time break and Blue Light Funk Music will play great music until dusk.

"This is the North Shore's playground," said Dailey. "There are only a few places in the country where you can see the excitement of a polo match; and Hawai'i is one of them. In fact, we are the state that introduced polo to the U.S."

Polo is believed to be the oldest organized sport in the world, with the first matches being played in Persia over 2500 years ago. Matches could resemble a battle with up to 100 men to a side. Today, the teams comprise four players; and the women are right out there mixing it up with the men. In fact, Hawai'i's own Noelani Picollo is Hawai'i Polo Club's youngest woman team member at the age of 15!

Plan to spend your Sundays enjoying the gorgeous views and unspoiled beach along Mokule'ia and watching this fast-paced game with heart-stopping moves! See you at the matches!



## Notes from Waimea Valley Botanical Garden

### David Orr, Botanical Collections Specialist

Waimea Valley is located across from Waimea Bay on O'ahu's North Shore. Our plant collections are developed and maintained to support scientific investigation, hands-on cultural education, and plant conservation. There are 41 garden collections grouped according to geographical region of origin, genus or family. Many of the rarest flowers and fruit on display at Waimea can only be seen here and in their distant places of origin.

**Passionfruit:** Hikers often come upon this common exotic weed-fruit growing from vines which drape from trees along the higher slopes of many valleys. The most common edible one is *Passiflora edulis* forma *flavicarpa*. The thick yellow-skinned rind protects the edible seeds which you crunch while drinking the tart juice held in many little clear sacks. Our local name, liliko'i, refers to the valley on Maui where it had already naturalized by the 1870's. "Flavicarpa" means yellow fruit, and the beautiful, complicated flowers of this form open in the afternoon. The smaller purple variety, forma *edulis*, sometimes called the purple grenadilla, has flowers that open at dawn, and it's found at higher elevations. It's more common in the subtropics, while the yellow form dominates in Hawai'i.

All *passiflora* are invasive, and one particularly aggressive species, *P. mollissima*, the "banana poka", has smothered many Hawaiian plants in higher elevations. Our worst *Passiflora* weed species in Waimea Valley is the small-fruited *P. suberosa*, with leaves that start with one point, but become star-shaped as the vine climbs. The flowers and green-turning-to-black fruit are less than an inch, and you can always recognize this species by tracing the vine to where it's coming out of the ground. "Suberosa" means almost corky, and the vine develops white flaky ridges with age.

Two delicious species are found in gardens. *P. laurifolia* has a purple flower, shiny, entire (lobeless) leaves and a dusty-looking orange fruit. Less common and recently planted at Waimea is the giant grenadilla, *P. quadrangularis*, with a squarish, almost football-sized fruit with the flavor of cantaloupe. Another naturalized species found at low elevation is *P. subpeltata* with a sweet, light-orange fruit similar to *P. laurifolia*. This species has light green leaves that look like three round-ended leaves fused together.

Early missionaries in South America went to great lengths to convince the indigenous people that the many parts of the wondrous passionflower were symbolic of the events of Christ's crucifixion, called the Passion. The different connotations of the word today leads to some comical misunderstanding of the nature (and effect) of the fruit.



# Upcoming Events at *Waimea Valley*

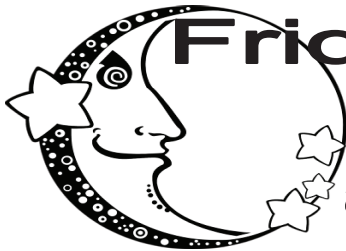
*Sunday, April 21st ~ Noon to 2:00pm  
Hawaiian Luau & Kanikapila Music*

*With the Abrigo `Ohana* 

Luau: \$25.00 for Adults, \$15.00 for Children (4-12)

**- Plus -** *Kama`āina and Military Appreciation Day*  
Special Valley Admission: \$5.00 for Adults,  
\$2.50 for Children (4-12) and Seniors (age 60+)

## *Moon Walk*



**Friday, April 26th**

**Please call for start times  
and additional information**

## *Haleiwa Farmers Market*

*at Waimea Valley*



*Every Thursday ~ In the Pavilion*

*3:00pm to 7:00pm*



WAIMEA VALLEY

59-864 Kamehameha Hwy.

Hale`iwa, Hawai`i 96712

(808) 638-7766

[www.waimeavalley.net](http://www.waimeavalley.net)

**Open daily 9:00am to 5:00pm**

## Celebration of Life

by Mike Willenborg

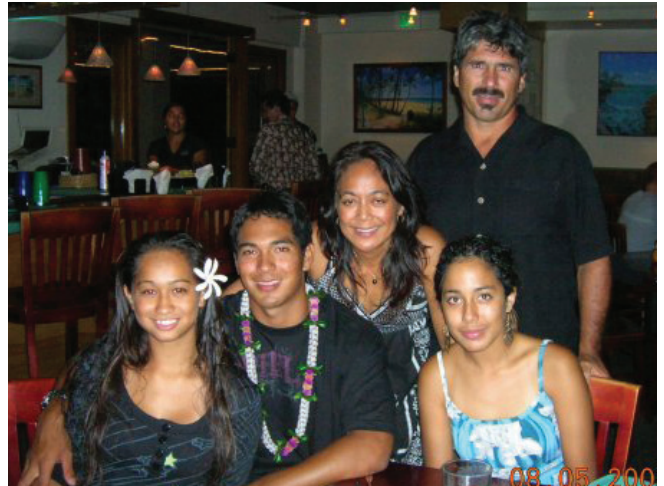
This is a story about a really good man who has fallen on some really tough times. On his 20th birthday, Dion Ripp moved to the North Shore of Oahu in 1981 from Santa Cruz. He loved to surf and especially the big waves. After surfing "Pigeon Point," later named "Mavericks," he was in search of a better life and year round waves. Mark Foo was kind enough to rent him a room and show him the ropes. Lani's 10 feet on a 6'4" was his first day out. And so he begins his life on the North Shore. As a carpenter, he found work, moved to Sunset, rented from Mick O'Brien and settled in a North Shore lifestyle.

In 1982 Dion met his future wife, Yvette and has been happily married for 28 years. He is a great family man with the blessing of Tehani and Nate, his two kids and Kaikila his grandson.

Dion has always been a low key dude. In the late 80's he was known as "the guy who caught the big shark," the 18 foot plus tiger shark that attacked Wayne Chun and luckily only bit a big chunk of his board. The following day he and Perry Dane went out and killed the beast.

Also, during the late 80's, Dion was towing with the likes of Garrett McNamara and Steve Poor with his 15" Power Skiff into the big waves before tow-in surfing changed to what it is today. His resume is long on accomplishments but prefers a low profile life with family and friends.

As an accomplished carpenter, Dion was building additions and was lead framer on million dollar houses. All was going well for Dion until summer of 2011 when he was almost left for dead after being found unconscious on the back motorcross trails in Kahuku from a gnarly crash. After weeks in the hospital recovering from the accident, the doctors delivered bad news, Dion also had stage 3 multiple myeloma



(a form of bone cancer). Not a good day for Dion or his family.

He and his family decided they were going to fight, it wasn't Dion's time to go. Too much life and love left to share. After rounds of chemotherapy, lots of prayer and healthy living, the cancer seemed to be in a holding pattern.

Things had stabilized and other than out of work, life was getting better with lots of love and optimism, until mid-November of 2011. Dion was helping a friend supervise moving a building, when a freak accident occurred. Once again Dion finds himself struggling for his life. After 2 months in the hospital and 1 month at home, he now goes on short hikes and is slowly getting his strength and spirit back. He is just amazing, defying all medical odds. He is here to stay. Dion and his family are now trying to put together a 2 or 3 month trip to a mainland hospital for special stem cell procedure with the hope of extending his life.

We are having a "Celebration of Life" on April 6, for a beautiful family and a courageous man. Please join us.

## Ripp Family Fundraiser

"We come together to support OHANA"

Everybody Welcome!

- Bon Fire
- Games and Activities
- Hula Performance
- Big Dance Floor
- Live Music
- Lots of Food
- Raffles and Prizes
- Face Painting

**Ron Artis Family Band**

Performing Live!

Call Mike 351-6927 for directions and info

Address: end of Kaukonahua Road mauka. Ag fields past the yellow gate with sign "goats for sale" at the flashing light. Gate will be open and follow the signs.

4-8 p.m. • April 6, 2013



Kim Taylor Reece Gallery



San LORENZO BIKINIS



KUA AINA

## BANZAI NORTH SHORE WIRELESS

John John Florence kicked out of the first leg of the ASP World Tour. This is looking bad for the young surfer who hoped to make a charge for a World Title this season. Florence suffered what is being called an ankle sprain with a bit of tendon strain, while doing an air maneuver during an expression session at Snapper Rocks, Aust. The 6 foot tall Florence, 20, was rated 4th last season and has bowed out of three events, he arrived home last week. Florence also suffered a broken ankle on a trip to Mexico a while back, we hope not the same one. Surfing injuries sometimes last for years or come back to haunt you later in life. An ankle sprain is not considered one of the top five surf injuries. The top five are lacerations, head injuries, shoulder damage, contusions and back sprains and strains. The list could change as more and more high risk moves like John John's air are being done. Surfers do not stretch enough so take that extra ten before you paddle out and remember "RICE" rest, ice, compression and elevation after an injury!

Dusty Payne, Maui, was in the same position with an injury laden tour last season but has broken the spell finally winning an event. It was a double double when he and Hawaii's Carissa Moore won the Drug Aware Margarete River Pro. Both beat a respectable crew of surfers to win. Carissa surfed against Taylor Wright in the final and Payne, who grew up on the North Shore, took it from Josh Kerr. The event was a top tier event for the Womens WCT putting Moore in 2nd place in the overall standings. "I'm feeling really, really amazing right now!" said Moore. "I'm stoked to walk away with the win and to be up on the podium again. I didn't win an event last year, and it was hard for me, but it definitely fired me up."

Payne has never won an event and was over the moon. "I've never won anything before, this is sick!," Payne said. "This is my first major win and this is an awesome event. I was in good rhythm at the event, which never happens, lucky I guess. I was injured for half of last year and had to sit on the sidelines and watch my friends surf and win events, and now here I am. It feels great." Bells is the next big event that Florence will miss. Go Hawaii!

The fourth season (2012/2013) of the Big Wave World Tour has officially concluded. This year's award ceremony is earlier than years past in order to clear the schedule for the first event on the BWWT schedule, The Punta de Lobos, Chile. The holding period for the event runs from April 1st to May 31st 2013. The tour was founded by legendary surfer and shaper Gary Linden. Tour organizers, led by Linden, closely monitor weather patterns for ideal conditions. Surfers are given



Tatiana Weston-Webb Scores a tube ride the win and the Gold Ring at Pipeline Pro

2 days to arrived at events. California's Greg Long, San Clemente, has been crowned champion of this year's Big Wave World Tour. Long made national headlines earlier this season for a wipeout at Cortes Bank off Southern California that nearly cost him his life. In the three events that made up this year's season, Long made the final in all three, putting him just ahead of runner-up Jamie Sterling of Hawaii. Sterling is a professional big wave surfer who travels around the world in search of big waves. Sterling is a North Shore Local and is known for charging the biggest waves including tow-in surfing. Check him out at <http://professionalsurfguide.com>.

Final Standings are as follows.

- 1st Greg Long (USA)
- 2nd Jamie Sterling (HAW)
- 3rd Carlos Burle (BRA)
- 4th Peter Mel (USA)

Pipeline has not stopped breaking! The late season waves were a plus for the Surf n Sea Pipeline Womens Pro presented by San Lorenzo Bikinis. The contest happened the first three days of the waiting period which included the North Shore Surf Shop Mens Pipe Pro Jr. Kalani David won the Pro Jr. which started in solid 8-10 foot surf. On the ladies side Tatiana Weston-Webb from Kauai was the big winner taking home the trophy and a solid gold "wave ring" from Windward Jewelers. Tatiana scored a deep tube ride earning her the ring. In the Womens bodyboarding final defending champion Karla Costa Taylor reined supreme with a ten point "air roll spin" maneuver in the final. Taylor is so solid at Pipeline she has won the event over 5 times. It was another Jr surfer that won the Open Womens. Dax McGill cruised past the contingent in the 4-6 foot surf to score the win. McGill lives right up the road from Pipeline and looked pretty comfortable surfing the lefts. Congratulations to all the wahine!

Yell at me, [banzaib@hawaii.rr.com](mailto:banzaib@hawaii.rr.com). for all you media services including photos and video!

# Waialua - The Saga of the North Shore

## Chapter 30 - La'anui Ka Keiki

By Kalewa

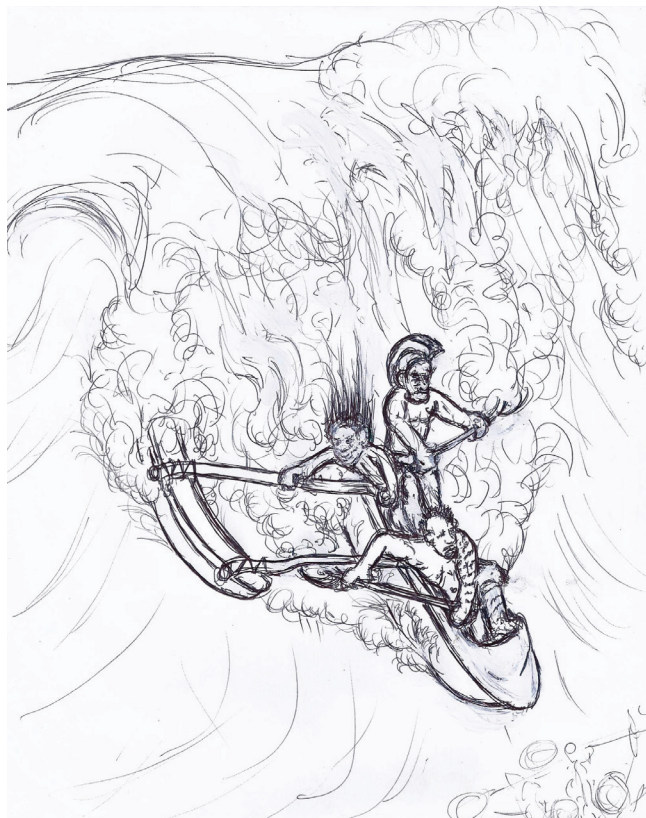
Kamehameha fought his final battle for supremacy of the Big Island near Hilo, after he had conquered Maui and O`ahu. In 1796 a faction of old line Maui chiefs had stirred rebellion in eastern Hawai`i. Kamehameha generally liked to keep his high chiefs as close to court as possible, especially those considered less reliable. So it was that the Waimea chief Nuhi, who had relatively recently become an ally of Kamehameha's and his pregnant, Maui-born wife, Kaohelani, were amongst the chiefs who traveled with the king as he extinguished the final embers of resistance on his home island. And that is why La'anui was born in Hilo.

Once the most worrisome ali`i had been dealt with, the remainder of the high chiefs were "invited" to reside at court, along with their entire families. La'anui's father, Nuhi, had behaved well enough for long enough to return to his lands in Waimea, which was only a day away from Kamehameha's court at Kailua, Kona.

La'anui's earliest memories were, at the age of four, when he stood amongst the chiefly youngsters who witnessed Kamehameha standing at the edge of a flowing river of lava issuing from Hualalai. The story was told over and over how the warrior king cut off his own hair and cast it into the molten stream, commanding Pele to cease her destruction of his favorite fish-ponds. La'anui was awe struck when she did.

The lad was about five years old when he boarded a huge war-canoe under his father's command, in the squadron belonging to Ke`eaumoku. The fleet consisted of hundreds of large double-hulled canoes, some up to 60 feet in length and mostly rigged in the western fashion. He took his place as a young ali`i in the formal religious and political processions and re-dedications of important heiau between the Big Island and O`ahu. He would always remember the grandeur and opulent protocol when Kamehameha or his young son Liholiho sought the assistance of the innumerable gods by following ancient, sometimes bloody, protocol. The fleet stayed in Lahaina for nearly a year before continuing on to O`ahu in preparation for the final thrust to Kaua`i.

Nuhi's men were garrisoned on the North Shore and were supposed to be amongst the vanguard of the upcoming invasion. Like most of the ali`i youth, La'anui was kept near court at Waikiki. He was often chosen to crew the rowing canoes for the warrior chiefs when they wanted to surf the waves of Waikiki, Waianae or the North Shore. Crewing for the ruling chiefs like Kamehameha, Ke`eaumoku, and Kalanimoku was way more fun than surfing with the fishermen because the higher the rank of the steersman the greater the possibility of utter destruction



of the canoe. The chiefs had no regard whatsoever for the safety of the canoe, the crew, or anybody who got in their way. They were utterly fearless and they were great fun!!

As a youngster of some rank growing up in those days, La'anui was familiar with westerners and spent many nights aboard ships anchored off-shore or in Honolulu Harbor. He fell ill along with everybody in town when the tragic `Oku`u struck down so many. His grief at losing his father was shared with the other chiefs who were losing family members at an alarming rate.

He became particularly close to an older distant cousin. His chief's second daughter, Pi`ia, was a few years older and somewhat larger but they became fast friends. Those two were playing privately behind a pile of mats when they overheard the plot to poison Kaumuali`i when he came over from Kaua`i to cede his holdings to Kamehameha. La'anui leaked the rumor to his Haole Uncle, Isaac Davis who intervened in the conspiracy, only to be poisoned himself.

La'anui would never forget the day he was called to court by Ka`ahumanu. The king was still ill, but it was clear he approved of his favorite's decision to have her younger sister formally attached to such a fine young man. Thus it was that, at the age of fourteen, La'anui was wed, in the chiefly fashion, to his good friend, the high chiefess Pi`ia.



# Ko'olauloa Sustainable Communities Plan Update

The Honolulu Planning Commission deferred making a decision on the draft Ko'olauloa Sustainable Communities Plan (KSCP) on March 20th, following a request made by Department of Planning and Permitting (DPP) planner Raymond Young.

Mr. Young cited the need for an extension because DPP was "not ready with the numbers for zoning" (referring to several questions asked by Commissioners during a hearing on the KSCP March 6th about numbers used for DPP decision-making regarding the proposed up-zoning of agricultural land). Mr. Young also mentioned that his Department was still "crunching the numbers" pertaining to the controversial document.

This is surprising information, considering Mr. Young's testimony during the March 6th Planning Commission public hearing in Kaneohe. At that time, Mr. Young told Commissioners that the KSCP had been "planned to death" and needed to be "pushed out" without further delay.

Unable to find answers to the Commission's questions about the flawed DPP draft for the past two weeks however, it seems that Mr. Young has discovered that this SCP wasn't planned thoroughly enough. The attempt to push the draft past the Commission has also exposed improper consultation with special interests and community exclusion from the City & County planning process.

The most contentious aspect of the DPP draft of the KSCP is a massive development proposal known as "Envision La'ie". This proposal is predicated upon a supposed need to expand the campus of Brigham Young University Hawaii (BYUH). Development would entail construction of a new town between La'ie and Kahuku in the ahupua'a known as Malaekahana. The new town would be larger than both La'ie and Kahuku and would include a commercial center, a light industrial park, churches, a school, market housing and "affordable" housing units.

DPP threw out a public version of the KSCP after

meeting behind closed doors with interests from Hawaii Reserves Inc. (HRI) - the development company of the Church of Latter Day Saints (Mormons) and Turtle Bay Resort. The public version, drafted by the Public Advisory Committee (a moku-wide representative body which was assembled by DPP), focused on sustainability and keeping Ko'olauloa "country".

Changes made by the Department focused instead on urbanization of the rural areas of Malaekahana, La'ie and Kahuku and reflected the wishes of HRI and Turtle Bay Resort instead of those of the community. The Planning Commission is tasked with reviewing the drastic changes recommended by DPP, and in light of public testimony, those changes have proven hard to defend.

The large majority of Ko'olauloa residents who were not compensated to testify at a recent hearing were adamantly opposed to the proposed revision. Unfortunately testimony from many residents of La'ie, the primary beneficiary of urbanization of the region, focused on a selfish desire for unsustainable population growth. Approximately 100 HRI, BYUH and PCC employees and students were transported, fed and given time off to 'fill the room with blue shirts' (supporting the development plan).

Before HRI began the frenzied call for urbanization, the KSCP was a plan that residents felt could meet the needs of the present without compromising the ability of future generations to meet their own needs. Now it is not.

DPP has two more weeks to find answers for a plan many in the community have begun to term "Envasion La'ie" or simply "the shibai plan".

We feel that adequate response and sufficient planning should be prerequisite to any approval for the KSCP moving forward. The Planning Commission will be continuing this agenda item in a decision-making hearing on Wednesday, April 3rd at 1:30 p.m. at the Mission Memorial Auditorium next to Honolulu Hale. For more information, visit: [www.envasionlaie.com](http://www.envasionlaie.com).

## Tubby the Clumsy Bear by Lily Richards age 8



NORTH SHORE CHAMBER OF COMMERCE

**5<sup>TH</sup> ANNUAL BUSINESS EXPO**  
**PRESENTED BY TURTLE BAY RESORT**

*Prepare Today, Succeed Tomorrow*



**TURTLE BAY**  
HAWAII'S FINEST NORTH SHORE

**Friday, May 10, 2013 • 8:00am - 6:30pm • Kuilima Ballroom, Turtle Bay Resort**



**ATTENDEE & EXHIBITOR REGISTRATION**

**Register by April 5 for the Early Bird Discount!**

**Attendees**

Includes continental breakfast, sandwich buffet, Pau Hana Reception, 5 seminars

	By April 5	April 6 - May 3
North Shore Chamber of Commerce Members	<input type="checkbox"/> \$60	<input type="checkbox"/> \$70
Non-Members	<input type="checkbox"/> \$75	<input type="checkbox"/> \$85

**Exhibitors**

Includes booth space (1 booth sign, 1 draped 6' table, 2 chairs) plus 1 exhibitor registration

Exhibitor Name (For Booth Sign)

Exhibitor Registration Name (For Badge)

	By April 5	April 6 - May 3
North Shore Chamber of Commerce Members	<input type="checkbox"/> \$250	<input type="checkbox"/> \$270
Non-Members Plus Membership *	<input type="checkbox"/> \$385	<input type="checkbox"/> \$400
Non-Members	<input type="checkbox"/> \$430	<input type="checkbox"/> \$450
<b>Optional</b> (1) Additional Registration		<input type="checkbox"/> \$50

**Optional** Additional Registration Name (For Badge)

**\* 10% discount on North Shore Chamber of Commerce membership for joining today!** Membership benefits include networking opportunities; free North Shore Chamber of Commerce Web site listing with link to your Web site; discounts on events, meetings, workshops; historic preservation; and more

**Total \$**

**Registration Information**

First Name \_\_\_\_\_ Last Name \_\_\_\_\_

Attendee Name (For Badge) *If Exhibitor, enter name for badge at left under Exhibitors*

Title \_\_\_\_\_

Organization (No Acronyms Please) \_\_\_\_\_

Street Address \_\_\_\_\_

City \_\_\_\_\_ State \_\_\_\_\_ Zip \_\_\_\_\_

Phone \_\_\_\_\_ Fax \_\_\_\_\_

Email \_\_\_\_\_

Emergency Contact Name \_\_\_\_\_ Emergency Contact Phone \_\_\_\_\_

**Payment Information**

- Check Enclosed: Payable to NORTH SHORE CHAMBER OF COMMERCE
- Credit Card: Please charge my  Visa  Mastercard

Name on Credit Card \_\_\_\_\_

Credit Card # \_\_\_\_\_ Expiration Date \_\_\_\_\_

Signature \_\_\_\_\_

Please complete all information and mail or fax registration form plus payment to the North Shore Chamber of Commerce. You may also call to register by phone. Please have all registration information and payment method ready when calling.

NORTH SHORE CHAMBER OF COMMERCE • [GONORTHSHORE.ORG](http://GONORTHSHORE.ORG)

66-434 B KAMEHAMEHA HIGHWAY • HALEIWA, HI 96712 • PHONE: (808) 637-4558 • FAX: (808) 637-4556 • EMAIL: [info@gonorthshore.org](mailto:info@gonorthshore.org)

# 5th Annual Business Expo presented by

## Turtle Bay Resort

“Prepare Today, Succeed Tomorrow”

Registration is open for the North Shore Chamber of Commerce’s 5th Annual Business Expo Friday, May 10 at Turtle Bay Resort. The event is sponsored by Turtle Bay Resort, Hawaii Human Resources, Kamehameha Schools, First Hawaiian Bank, North Shore News, American Savings and Barefoot Wine & Bubbly.

Primarily an educational and networking opportunity for the North Shore business community, this year’s Expo is emphasizing informing businesses about upcoming changes for which they will need to prepare. One of the biggest changes will be the implementation of the Patient Protection and Affordable Care Act known as Obama care (ACA) which will go into effect January 1, 2014.

The Expo begins at 8:00 a.m. with registration, then a panel discussion on “The New Health Care Law and What It Will Mean to You” will kick-start the day off. The panel will include Tom Matsuda ACA Implementation Manager from the Governor’s office, Rose Hughes from the Hawaii Health Connector, Mike Cheng, Senior VP of HMSA, Matt Delaney CEO of Hawaii Human Resources, and Dr. Christopher Flanders Executive Director of the Ha-

waii Medical Association. The panel will look at the impact of the reform legislation starting from a macro policy view to the micro level of patient care.

A full day of seminars will be presented including topics covering Marketing, Social Media, Tax Changes, New Food Safety Laws, Managing Multiple Priorities, Implementing the ACA, Surviving the Economic Downturn, and possibly others. A continental breakfast, lunch and cocktail reception following the Expo will be included in the registration fee.

Chamber members, non-members, and residents are all welcome. Discounted “early bird” registration is available through Friday, April 5th with a deadline to register on May 3rd. To register or for more information, please visit [www.GoNorthShore.org](http://www.GoNorthShore.org) or call the Chamber at (808) 637-4558.

### About the North Shore Chamber of Commerce (NSCOC)

Haleiwa Main Street, DBA the North Shore Chamber of Commerce, a charitable 501 c 3, was founded in 1985 to encourage economic development through historic preservation. Today, the Chamber exists to promote, maintain, and encourage the historic, cultural, civic, and economic welfare of the North Shore district through research, education, advocacy, and related activities.

To learn more about the Chamber, please visit [gonorthshore.org](http://gonorthshore.org).

# BULLETIN BOARD

## SUNSET AUTO SERVICE, INC.

- Auto air conditioning specialist
  - Auto engine maintenance
  - Safety inspection station
- Walking distance to Wahiawa DMV

Call for appointment  
622-5510

Matt Verdadero  
207 N. Cane St., #1 Wahiawa



## Ernie Doak Plumbing, Inc.

Serving Oahu’s North Shore

Proficient ♦ Professional  
Over 30 Years Experience

Ernie L. Doak  
#C-22113  
#PJ-10630

(cell) 295-7943  
(office) 638-8620  
[ErnieDoakPlumbing@yahoo.com](mailto:ErnieDoakPlumbing@yahoo.com)

## Jerry’s Pizza

# 637-8866

Fresh Pizza • Subs • Pasta & Salad!  
Delivery in Haleiwa Town & Waiialua  
Open 7 days a week • 7 a.m.-9 p.m.

## Green Waves Landscaping

Ilan Freitas  
Owner

Yard Service  
Tree and Coconut trim  
Splinkler Installation and repair  
Grass Planting and other services  
Phone numbers: 372-8848/371-9617  
[greenwaveslandscaping@yahoo.com](mailto:greenwaveslandscaping@yahoo.com)  
Refer a friend and get one cut free!



“THE BULLETIN BOARD THAT IS IN EVERYONE’S HOME”

# BULLETIN BOARD



Featuring the largest selection of certified organic produce on the North Shore. No panic...ours is organic. Open 7 days. Mon.-Sat. 9am-6pm. Sun. 9am-5pm

66-445 Kam. Hwy  
Haleiwa, Hawaii 96712  
Next to the Post Office  
808-637-6729 • 808-637-1922 fax



**DR. PORTER TURNBULL**  
Chiropractic Orthopedist  
(808) 638-8740  
Appointments available Mon.-Sat.  
(evenings by appointment)

- Industrial accidents & auto injuries
- Sports injuries • Spinal care
- Safe, Effective, and Gentle

## N-C PLUMBING & SUPPLY

Cont. Lic. No. C-8913



- RESIDENTIAL & COMMERCIAL SALES & SERVICE
- CONTRACTING & DESIGN • HOME PLUMBING SERVICE
- PLUMBING FIXTURES, HEATERS • FREE ESTIMATES

Nestor P. Calilao (Owner) Bus: 637-8662  
P.O. Box 769 Res: 638-5157  
Waialua, HI 96791 Cellular: 372-8718  
email: nncplumbing@hawaii.rr.com



**JAY OKU**  
Senior Mortgage Banker  
NMLS # 218211

tel: 808.393.0707 fax: 888.961.8718  
email joku@envoymortgage.com  
www.jayoku.com



## Restaurant & Margarita Bar

- DAILY SPECIALS -

Island Fresh Fish Tacos  
Premium Margaritas

Large Parties Welcome Open Daily 9:30am - 9:30pm  
637-3059 • North Shore Marketplace • Haleiwa  
www.CHOLOSMEXICAN.com



## COWPER CONSTRUCTION

LIC. #AG 18275

GENERAL ENGINEERING CONTRACTOR

Full Service Sitework  
Contractor  
Septic Systems & Tanks  
25 yr. exp.

Michael Cowper 638-7200  
cowperhawaii.com

## Farmer & The Baker LLC

(Formerly Mokuleia Landscape & Nursery)



### Trees, Palms & Shrubs

Contact Us: 808-341-1992

### HOLOHOLO MOBILE SCREEN SERVICE



- \*new window installation
- \*new screens/re-screens
- \*pet proof screens
- \*jalousie repairs
- \*porch enclosures
- \*sliding/swinging screen doors
- \*pet grills & doors
- \*solar screens
- \*screen door roller repair

FREE ESTIMATES  
808-783-8764  
www.OahuScreens.com

## Munden Design & Build

Lic.#BC19632

Design • Plans • Permits • Construction  
Additions & New Residences

808 391-8616

Providing quality work since 1978

## J.B. TILE & CARPET

JOHN BURTCH

Free estimates  
25 years experience  
(808) 226-1023



# Blood Bank of Hawaii

Want to save lives? In just one hour, you can save up to three lives. Please help Hawaii's patients get the blood they count on every single day by being a volunteer blood donor.

Following are the blood drives on the North Shore of Oahu in April. Note: drives are subject to change. Call 848-4770 to schedule an appointment or check on drive information.

**Saturday, April 27**  
**Laie Shopping Center – Bloodmobile**  
**7:30 a.m. – 12:15 p.m.**

Sign up to save lives today. The requirements to be a blood donor are simple:

- Be in good health
- Be 18 years of age or older (17 with signed Blood Bank of Hawaii parent/legal guardian consent form)
- Weigh 110 pounds or more
- Bring a valid photo ID with date of birth

Experience the power of one hour and help save lives by donating blood. To make an appointment, call Blood Bank of Hawaii at 848-4770. For more information, visit [www.BBH.org](http://www.BBH.org).

## North Shore News



## 2013 Schedule

PUBLICATION DATE	EDITION	DEADLINE DATE
April 17	#8	April 4
May 1	#9	April 18
May 15	#10	May 2
May 29	#11	May 16
June 12	#12	May 30
June 26	#13	June 13
July 10	#14	June 27
July 24	#15	July 11
August 7	#16	July 25
August 21	#17	August 8
September 4	#18	August 22
September 18	#19	September 5
October 2	#20	September 19
October 16	#21	October 3
October 30	#22	October 17
November 13	#23	October 31
November 27	#24	November 14
December 11	#25	November 29

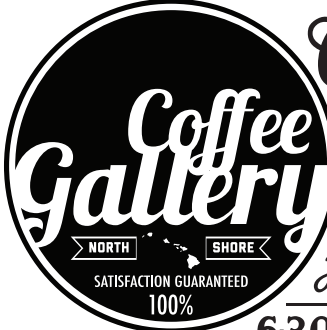
**Direct-Mailed to Every Home**  
**MOKULEIA • WAIALUA • HALE'IWA • KAHUKU • LAIE**  
**Every Other Wednesday**  
**12,000 copies**

"The North Shore's most popular publication" since 1970  
 (808) 637-3138 • [NShoreNews@aol.com](mailto:NShoreNews@aol.com)

**MAHALO!**  
 From the  
**North Shore Food Bank**  
 donations of non-perishable  
 canned  
 goods are accepted at the  
**North Shore News Office**  
**637-3138**





**Coffee!**  
*You can sleep when you're dead!*



**6:30AM - 8:00PM**  
**NORTH SHORE MARKETPLACE**  
**WWW.ROASTMASTER.COM**

*Oceanside Chapel Service  
 at Turtle Bay Resort*




Every Sunday at 9 a.m. in the beautiful oceanside wedding pavilion.

- Non-denominational 45 min. service
- Traditional & Contemporary music
  - 15 minute sermon
- All are welcome! Free validated parking

Hosted by Pastor Kurt Kamikawa  
 808-358-6066  
 Pastor Bob Major 808-681-8889  
 Jamin Hiebert

\*When church is pau, enjoy dining at the Palm Terrace, Hang Ten Pool Bar, or Lei Leis.



**Turtle Bay Resort**



The North Shore News is published every other Wednesday and mailed free of charge to all North Shore homes and businesses. Extra copies may be obtained at our office.

**PRESS RELEASE POLICY:** Submit press releases in person or by fax, mail or email to Editor, North Shore News, P.O. Box 1117, Haleiwa, HI 96712. Please type your releases and keep them shorter than 200 words unless they are of an unusual news interest. Releases should be viable news stories and are published on a **space available basis only**, with priority given to those received in our office first. You may attach photos. We are not responsible for the return of any photos. All materials are submitted at owner's risk. We reserve the right to edit and/or refuse all submissions including advertising.

**EDITORIAL POLICY:** We welcome articles and letters from our readers. Letters to the Editor are published on a space available basis only and preference is given to shortness of length, and quality of content. We prefer to run not more than one letter, per person, per 6 month period. Letters subject to edit.

Views expressed by our contributing writers and advertisers do not necessarily reflect the view of the management and staff of the North Shore News. All rights reserved. Reproduction in whole or part without permission is prohibited. © 2013.

#### Editor & Classifieds

Linda Seyler

#### Typography

Downtown General Store

#### Contributing Writers

Betty Depolito

Naty Hopewell

Choon James

Kalewa

Richard Sterman

City Councilman Ernie Martin

State Representative Lauren Cheape

State Representative Richard Lee Fale



Please recycle this newspaper.

# CLASSIFIEDS

## SERVICES

### SHORE ELECTRICAL SERVICE

New Const-Remodels  
638-0049 / Lic#C20777

### Dog/Cat Nail Trimming

at your home only \$15.00  
Call Julie 637-5395

### Lawn Care For You

Mowing, Trimming, Light Hedging  
Call Thomas 637-5839

### EXPERT ELECTRICIAN

Fans, emergency services, etc.  
Jim Richards 371-9369

### PARADISE PLUMBING INC.

New Const • Repairs • Remodels  
808-368-1473 / Lic. 29856

### Handyman Services

Remodeling, Carpentry, Floors,  
Concrete, all parts of Construction  
Call Bob "The nicest guy in the  
business" Ph. 282-2812

### Greekz Plumbing LLC

Complete Service & Repair  
Camera inspection/drain cleaning  
"Got a leak? Call Steve the Greek"  
808-372-1820

### Haugan Construction LLC

Build & Repair • Big & Small  
Let's Talk  
Steve 542-9269

### DILLON CUSTOM SIGNS

Storefronts & vehicles  
Haleiwa 499-9582 20+yrs exp

### North Shore Pumping

Septic and Cesspool Service  
Clifford 638-0900 • 291-5099

## PIANO LESSONS

Guitar, Ukulele, Bass,

Songwriting  
637-4635

Next Issue - April 17, 2013

Deadline Date-April 4, 2013

### Paumalu Electric Inc.

Now installing Solar PV Systems  
Permit, panels, roof installation,  
electrical tie in. Free estimates.

Dave Hancock 638-9054  
Lic. C18074

### HARVEY'S REPAIR, LLC

24 hrs Towing Service

Specializing in opening

locked car doors

Call any time 478-0333

### GERMAN CAR SERVICE

Professional-Qualified

Technician

Call Gary

637-6800

### SHIATSU • LOMI

Aromatherapy

Milica Barjaktarovic

Lic # MAT8348

351-0848

HumanRemodeling.com

### BOW WOW BUNGALOWS

Licensed Boarding Kennel

North Shore, Oahu

Reasonable Rates

Ph. 637-2562

*These Dogs Have Fun!*

### Body by Tracey

Cardio, Strength &

Conditioning at

Sunset Elem. Pavillion

Mon/Wed/Fri @ 8:30am

Tues/Thurs @ 6pm

Contact (808)799-7214

or Traceybjj@gmail.com

### Save Sea Turtles

Use Reusable Bags

www.b-e-a-c-h.org

### BIKRAM YOGA

See our new studio, anti-  
microbial, anti-bacterial  
carpet and more!

Please call for class schedule

**637-5700**

### Offshore Plumbing, Inc.

Commercial \* Residential

Septic \* Solar \* Design

Mike 630-1407

Steve 371-3451

Lic. #28113

steve@offshoreplumbinginc.com

### BOBBY'S BODIES

Tuesday evenings at 5:00 p.m.

• Body Toning

Friday mornings at 9:00 a.m.

• Cardio Pump/Fat Burner

For more info: call Bobby, owner of  
BOBBY'S BODIES at 637-4150

### Aloha Computer

PC Repair/Virus Removal

Fax/Copy/Internet Access

372-2667 or 237-4558

### REAL ESTATE NEEDS?

Call me . . . Dee,

Your NS Realtor

Dee-Ann KML

Kekahuna, RA

808-780-3249

### Statewide Hotline for Litter

**1-888-592-2522**

Callers need to provide:

1. License plate number
2. Make and model of vehicle
3. Date and time and location
4. What was thrown/blown

### For Advertising Rates

**Call 637-3138**

## HOW TO CONTACT THE NORTH SHORE NEWS

Letters to the Editor, and other items submitted for publication consideration may be sent to us via:

MAIL: P.O. Box 1117, Haleiwa, HI 96712

E-MAIL: NShoreNews@aol.com • FAX: (808) 637-8862

PHONE: (808) 637-3138

Office Hours: Monday-Friday 10 a.m.-3 p.m.

www.northshorenews.com

# CLASSIFIED ADS

Individual Tax Preparation with emphasis on small businesses and rentals  
40+ years experience  
**Jeannine Poling EA**  
638-5130

**Pothole Hotline**  
768-7777

**Your Clean Home**  
Vacation/Residential Home Cleaning  
Affordable • Reliable  
• Green Cleaning  
For Free Estimate  
Call 638-0262 or 782-9941

**ANGELS PLUMBING**  
Repairs  
Remodeling  
Renovation  
**638-7878**  
Lic. #C12004



**THE LAWN RANGER**  
Lawn Maintenance  
no yard too hard  
no lawn too far gone  
We mow betta  
258-6439 Dan Fatchett



**Business Services Center**  
Fast & convenient fax, copy, scan, computer/internet, laminate, etc.  
Across from Haleiwa post office.  
637-4558 or GoNorthShore.org



**Marianne Abrigo, Properties**  
Specializing in -  
North Shore Real Estate  
Ask for our list of available properties and/or a free market analysis.  
**Marianne M. Abrigo**  
"Realtor since 1974"  
Office **637-3511**  
Fax **637-0777**  
Email **mabrigo22@aol.com**

**GUTTER KING, LTD.**  
Rain Gutter Systems  
Seamless Aluminum & Copper  
Half round & Custom sizes  
"senior, military discounts"  
638-7246

**Golden Rule Lawn Care**  
Mowing, weed whacking, hedge trimming, rake up, light weeding & haul away.  
Call Matt 269-5020

**J&L Services Haleiwa**  
Quality Landscape and Garden Maintenance. Also Pressure Washing, Hedges and Plant Installation.  
Call 673-1384 for est.

**TRADITIONAL HAWAIIAN LOMILOMI MASSAGE**  
• 20+ Years Experience  
• North Shore Studio  
**808-372-7649**  
Lolani222@gmail.com  
Lolani Friedman

**Island Heal @ Ka'ala Healing Arts Center**  
Introductory Massage Special  
\$55.00 hr. for the month of March  
www.islandheal.com  
(808) 351-4566

**HELP WANTED**  
**BUSSERS/SERVERS**  
Pizza Bob's in Haleiwa is looking for BUSSERS/SERVERS. Experience preferred. Apply in person at 66-145 Kam. Hwy.

**COOKS/KITCHEN HELP**  
Pizza Bob's in Haleiwa is looking for kitchen personnel. Experience preferred, but will consider training the right people. Apply in person at 66-145 Kam. Hwy.

**Part Time Secretary**  
Must have computer skills and high speed internet access.  
Fax resume to 638-7643

**Retail Sales Surf & Sea**  
Hawaii's Ocean Sports Headquarters is always looking for hard working, energetic people to become a part of our sales team. Good pay, bonus, benefits. Ocean sports experience and/or bilingual a plus. Apply in person daily 9am-7pm  
62-595 Kam. Hwy., Haleiwa

**FOR SALE**  
Heavy oak wood bunk bed w/ drawers \$325.00. 6 mo old  
450-2409

**FOR RENT**  
Looking for housemates for furnished house. Master bedroom plus bedroom. Must be working clean with references. Call 561-6322

**MISCELLANEOUS**  
During a recent vacation to Hawaii I misplaced my credit card and didn't notice it missing until we were on our plane back to Canada. I was able to trace my whereabouts from the history in my phone and realized I must have lost it at Cholos restaurant on the North Shore. I called as soon as we got home and sure enough it was there. What a relief! I gave them my mailing info and just a week later my card was back where it belonged. Thank you again to the staff at Cholos for wonderful margaritas and nachos and for looking after my card!  
Catherine Cooke

**BEACH CLEAN UP**  
Chun's Reef - 10 a.m.  
637-2211  
Last Saturday of every month  
adoptabeachhawaii.org

**Please Report Stranded Sea Turtles**  
Call 983-5730 • Mon.-Fri., 7am-4pm  
288-5685 pager w/kends, holidays  
587-0077 and after hours  
Suspected Law Violations  
541-2727 or 800-853-1964  
NOAA Fisheries DLNR-DOCARE

**Hawaiian Humane Society**  
**(808) 946-2187**  
Animal Rescues & Investigations 356-2250  
Dog Licensing 356-2227  
Donations & Gifts 356-2221  
Education 356-2206  
Pet Adoptions & Lost & Found 356-2218

**OFF da ISLAND**  
Are you leaving Oahu on vacation or business? Do you live on a neighbor island, the mainland or foreign country and subscribe to the North Shore News? Try send us a photo of someone in front of a sign or landmark holding a copy of the NSN. Email your photo along with the person or persons' name, community of residence, telephone number and photo location to: NShoreNews@aol.com. Or, mail to OFF da ISLAND Photo, North Shore News, P.O. Box 1117, Hale'iwa, HI 96712. We cannot return photos so please send us a copy. Photos received become the property of NSN. Preference and priority will be given to emailed photos.

**Classified Ad Rates**  
3 lines (min.) \$18.89  
4 lines \$25.13  
5 lines \$32.45  
1" Box Ad \$41.88  
(29 characters in each line)  
Include your contact information.  
\*Ads can be dropped off in mail slot, mailed, or emailed. Pay by check payable to: North Shore News or credit card by phone order.  
We reserve the right to refuse any advertisement with a full refund.  
North Shore News • P.O. Box 1117  
Haleiwa, HI 96712 • (808) 637-3138  
NShoreNews@aol.com

**Voice of God Ministries**  
Jesus Loves You  
If you need Prayer  
Call 808-373-0294

**Ho'ola Like Waikiki Health**  
Center's North Shore Clinic Queen Liliuokalani Church 8:30am - 3:30pm, Tuesday and Thursday

**IGREJA EVAN. BRASILEIRA**  
Domingos 10:00 am  
Quartas 7:30 pm  
Sextas-Culto de Oraçao 7:30 pm  
Voce e o nosso convidado especial  
Behind Hale'iwa Post Office  
637-5566  
Pastor Luiz • 638-2212

**Keep it Country**  
To report **ILLEGAL VACATION RENTALS**  
call 768-8159 or 768-8118  
You will remain anonymous  
**Illegal Vacation Rentals are ruining the North Shore**  
www.savenorthshoreneighborhoods.com



MALAMA MARKET HALEIWA:

OPEN DAILY 7 AM-9 PM  
808.637.4520

MALAMA MARKET MAKAKILO:

OPEN DAILY 6 AM-10 PM  
808.672.9955

Valid Dates:  
4/3/13-4/9/13

Green Seedless Grapes **\$1.99** PER LB.



choice Certified Angus Beef® Boneless Chuck Steak Value Pack **\$3.99** PER LB.



Freshly Made Ahi Poke All Varieties **\$12.99** PER LB.



Coca-Cola Selected Varieties, 2 ltr. **5/\$5**



Banquet Family Entrée Selected Varieties, 25-32 oz. **3/\$9**



Malt-O-Meal Box Cereals Selected Varieties, 11-14.5 oz. **2/\$6**



Nabisco Oreo Cookies or BelVita Biscuits Selected Varieties, 8.5-15.35 oz. **2/\$6**



Nissin Top Ramen Selected Varieties, 24/3 oz., Case Sale Only! **\$6.99**



Häagen-Dazs Ice Cream Selected Varieties, 14 oz. **2/\$6**



Hinode Calrose Rice White or Brown, 20 lb. **\$10.69**



Maple Leaf Bread Assorted Varieties, 16 oz., Sliced **\$4.99** EACH



Reser's Salad Assorted Varieties, 3 lb. **\$5.99** EACH

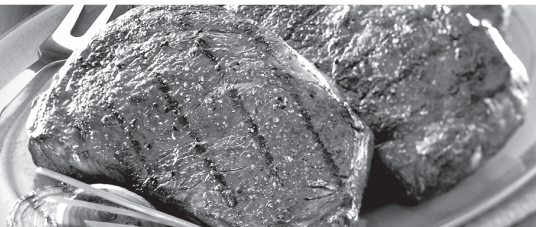


Corona or Heineken 18 Pk. Bottles or Rolling Rock, Pabst Blue Ribbon, or Keystone 30 Pk. Cans **\$19.88**



**THURSDAY**

INCLUDES:  
7-8 oz. Steak  
Rice • Tossed Salad • Drink



**Grilled Steak LUNCH \$6.99**

Hawaii Beverage Fee of 1¢ per can or bottle will be added to purchase price at checkout. An additional Hawaii Deposit fee of 5¢ will be charged for all specially marked beverage containers.

Limit five units (mix/match) per purchase, unless otherwise specified. We reserve the right to limit quantities. No sales to dealers. Prices plus applicable state tax. Hawaii EBT cards welcomed.