



"E Ala Na Moku Kai Liloloa"

HAWAII POLO
SINCE 1963

Polo 2013
season schedule
see page 11



NORTH SHORE NEWS April 17, 2013 VOLUME 30, NUMBER 8



Photo by Maya Yohimura

First Baptist Preschool of Hale'iwa earns national NAEYC accreditation

First Baptist Preschool of Hale'iwa located in Hale'iwa has earned accreditation from the National Association for the Education of Young Children (NAEYC)—the nation's leading organization of early childhood professionals.

"We're proud to have earned

the mark of quality from NAEYC, and to be recognized for our commitment to reaching the highest professional standards," said Toni Respicio, Director of First Baptist Preschool of Hale'iwa. "NAEYC Accreditation lets families in our community know that children in

our program are getting the best care and early learning experiences possible. We have served the North Shore community since 1968. We strive to meet the needs of all the families and their children and to provide the very best Christian Preschool on the North Shore."

To earn NAEYC Accreditation, First Baptist Preschool of Hale'iwa went through an extensive self-

continued on page 2

66-437 Kamehameha Hwy., Suite 210
Hale'iwa, HI 96712

PRE-SORTED
STANDARD
U.S. POSTAGE PAID
Honolulu, Hawaii
Permit No. 1479

PROUDLY PUBLISHED IN
Hale'iwa, Hawai'i



Left to Right: Dennis & Ann Hallam, Phil & Sandi McClanahan, Cliff & Norma Cassity, Gena & Bob Wilhelm.

OFF da Island in Beaver Creek, Colorado

Eight North Shore surfers and golfers braved the cold and the snow in Beaver Creek, Colorado. They are pictured in front of Zach's snow cat. After a long day of skiing, they relaxed, talked story and passed around the North Shore News to remind them of the good times on Oahu's beautiful North Shore. For more information on the OFF da Island campaign, turn to page 23.

First Baptist Preschool continued from page 1

study process, measuring the program and its services against the ten NAEYC Early Childhood Program Standards and more than 400 related Accreditation Criteria. The program received NAEYC Accreditation after an on-site visit by NAEYC Assessors to ensure that the program meets each of the ten program standards. NAEYC-accredited programs are also subject to unannounced visits during their accreditation, which lasts for five years.

"Having earned NAEYC Accreditation is a sign that First Baptist Preschool of Hale'iwa is a leader in a national effort to invest in high-quality early childhood education."

The Hale'iwa Family Dental Center, Ltd.



presents

"Comfort Dentistry" including—

- Relaxation Glasses
- Television Glasses
- Caring Staff
- Special Medication to help you relax
- Laser Cavity Detection
- New Patients Welcome!

Your teeth are much too important to neglect.

Call: 637-9652
for your reservation

We're conveniently located behind First Hawaiian Bank
in the heart of Hale'iwa.

TURTLE BAY'S & SURFER, THE BAR'S LINE UP >>



UPCOMING EVENTS

HIGHLIGHTS

Visit us online for
complete event listings.

Apr 18. TALK STORY W. CARL KISH

CARL KISH of San Diego's Center for Surf Research (yes, there's a college degree for Surf Research!) will give us a glimpse into surf travel then, now, and in the future. Carl is in town working on his latest Sustainable Surf Tourism project - taking place right here at Turtle Bay Resort. He is an incredible example of the fascinating life opportunities that surfing and surf travel present.

Surfer, The Bar | 8p | \$5 suggested donation

Apr 20. DALA

Drawing upon influences like The Beatles, Joni Mitchell, Neil Young and Bob Dylan, Dala write songs that are both catchy and insightful. Amanda's ethereal soprano voice blends seamlessly with Sheila's velvety alto, creating the lush harmonies that have become their trademark.

Visit surferthebar.com for tickets.

Surfer, The Bar | Show starts at 9p | \$25 | 21+

May 12. MOTHER'S DAY BRUNCH

We will be offering a fantastic Mother's Day Brunch Buffet on Sunday, May 12 in our Kuilima Ballroom with live entertainment and delicious selections like Roasted Beet Salad with Raspberry Vinaigrette, Roast Prime Rib with Herbed Au Jus, Island Mahi Wellington, an omelet station and so much more. Visit turtlebayresort.com for menus and call 447-6632 or 293-6020 for reservations.

Kuilima Ballroom | Seatings at 9:30a & 11:30a | \$49A/\$24.50C | Prices are plus tax and gratuity.



April 20th | Surfer, The Bar at Turtle Bay Resort

Doors @ 7PM, 21+

TICKETS AVAILABLE AT:
www.groovetickets.com / www.bamproject.com /
& Local Motion Stores.



To learn more about Surfer, The Bar, check out www.surferthebar.com. If you are not familiar with DALA's music, visit their website at www.dalagrisk.com.

NOW OPEN >>



At the new **North Shore Kula Grille** you can explore the flavors of our islands as they have been enjoyed for centuries – naturally, with organic artisan farming and harvesting practices, showcasing the rich agricultural history of Hawaii and the North Shore in every dish. We bring a fresh twist to these traditions, with selections inspired by popular local flavors such as macadamia nuts, pineapple and coconut, as well as lesser-known ingredients like sea asparagus.

Visit turtlebayresort.com for breakfast and dinner menus.



"More story than store", the **WaterShed** plays upon the concept of a North Shore waterman's accessory shed – a place of pride in Hawaii's coastal communities where every waterman and woman house their "tools" for maximizing their adventures. The WaterShed features all locally designed and crafted custom fixtures – many cleverly created out of repurposed local woods and materials. The WaterShed features apparel for men, women and youth, as well as select shoe styles, accessories and gifts. Located along the Hans Hedemann Surf Center.

North Shore Town Hall Meeting

Hosted by

Representatives

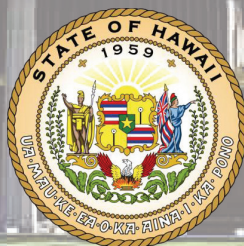
Richard Lee Fale & Lauren Cheape



Date: Thursday April 18, 2013

Time: 6:30 pm – 8:00 pm

Place: Waialua Elementary
School Cafeteria



Rep Richard Fale
Hawaii State Capitol
415 S Beretania St #
P: (808) 586-6380
F: (808) 586-6381
Email: repfale@capitol.hawaii.gov

Rep Lauren Cheape
Hawaii State Capitol
415 S Beretania St #303
P: (808) 586-9490
F: (808) 586-9496
Email: repcheape@capitol.hawaii.gov



**Free Family Movie Night
at Waialua Community
Association**



The Big Miracle

Fun for the whole family!
Friday, April 19 at 7 p.m.
FREE ADMISSION

Drinks & Popcorn for sale



Sponsored by WCA.
For more information, call 637-4606
www.WaialuaCommunityAssociation.org



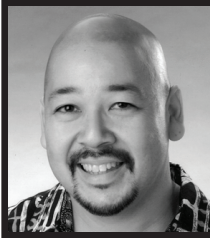
WAIMEA VALLEY welcomes

Hale'iwa FARMERS' MARKET

All your favorite farmers, foodies and artisans
coming together again on the North Shore!
Come hungry! Live Music!

Thursdays 3-7PM
Pikake Pavillion & Lawn

Free admission & free parking




Council Chair
Ernie Martin
Serving You in District 2

The First Hundred Days of the New City Administration

On April 3, 2013, Mayor Kirk Caldwell delivered his first State of the City address to a crowd of dignitaries and invited guests at the Mission Memorial Auditorium. Most of the City Council members were in attendance, taking the time to hear what the Mayor had to say about his first one hundred days in office. Mayor Caldwell emphasized the team effort of his new administration, proudly reporting that it includes the first woman to serve as the Managing Director of the City & County of Honolulu, Ember Shinn. In fact, women make up over one-third of the directors and deputies running the city in the Caldwell administration. All of the Directors, the Police Chief and the Fire Chief were recognized for their talent and dedication to public service. The Mayor's speech highlighted five priorities that have been the focal point of his time in office to date. His top priority has been to restore full bus service. North shore residents were among those riders who experienced the most serious impacts of the cuts to bus routes last year. The Council whole-heartedly supports the restoration and the Mayor's plan for a phased in restoration has already begun. There are plans to restore service to five more routes in May, and complete the restoration in August. The Council is very likely to support the 3.5 million dollars in the Mayor's proposed budget to cover this priority and to fully integrate bus service into the City's plan for a transportation system for Oahu that will eventually include rail transit. The Mayor's second priority is road repair and maintenance. In spite of the Council's rejection of a five cent a gallon increase in the fuel tax to fund it, he still proposes to spend 150 million dollars a year, re-paving 300 lane miles per year, over the next five years. This is a very ambitious plan and its feasibility remains to be seen. We all agree that the work is important. The only dispute is how much to spend and how fast the City is able to spend it on road repair. The Mayor also stressed the importance of sewer capacity and its impact on new development and the construction industry. One of the most interesting initiatives for the new administration is the fourth priority of re-establishing public pride in our city Parks. Again, the Council is likely to support the Mayor's plans to maintain our parks as clean and safe recreation areas for local families and visitors to enjoy. He claims that some of our parks have become both unsafe and unclean, prompting him to propose nearly \$12

million to repair and improve park facilities such as restrooms, aging playground and lighting equipment, and run-down recreational facilities. Priority five is the Mayor's pledge to build rail better by reducing visual impacts, encouraging community input and promoting fiscal transparency. Here too, the City Council likely to share these goals for building the mass transit system. In addition to the five priorities, the Mayor also cited Oahu's homeless population of 4,500 people and the social problems they represent as in need of our immediate attention. For the near-term, the Mayor said, we need to find a temporary solution to get people off of the streets, out of the parks, and return these areas to the public. He indicated he will sign Bill 7, a bill that addresses nuisances on public sidewalks and is being advanced by the City Council. The Council's intent is to direct the homeless off the streets and into safe shelters where they can receive social services. Finally, the Mayor called for the development of an age-friendly city that is geared to the needs of our elderly citizens through careful planning of our infrastructure and transportation services such as the HandiVan service and expediting city permits for home improvements to help our seniors age-in-place. These priorities of the new administration are common goals shared by the Council and hopes are high for a cooperative effort between the Mayor and the City Council in the weeks and months ahead.



PAALAA KAI BAKERY
"Your Hometown North Shore Bakery"

Order By Phone! (808) 637-9795
66-945 Kaukonahua Rd Waiialua, HI 96791
Right Next the Paalaa Kai Mini-Mart



COMING TO PKB!
You'll save on our most popular items!

Stop by and pick up a FREE discount scrip book today!



Carnival

Celestial Celebrates Earth Day 2013

Saturday, April 20 & Sunday, April 21, 2013

Earth Day is a special time for us here at Celestial Foods. It gives us a special time to feature a huge selection of products that compliment Earth Day. We support local organic farmers and bring our community household cleaning products that are safe for your home and environment. This year Celestial Natural Foods will have a two day sale featuring all of our products at 20% off. Now is the time for many of you to try out the new products and check out the line of all the organic foods we carry. Going green is good, for all of us, and for Mother Earth. Have a great Earth Day 2013. Hope to see you this weekend for our Earth Day storewide sale. Remember Earth Day is Everyday!

Celestial Natural Foods Earth Day Celebration

Come help us celebrate Earth Day
on the North Shore!



SATURDAY, April 20, & SUNDAY, April 21

MAHALO & ALOHA!

In downtown Hale'iwa

66-443 Kam. Hwy. Ph: 637-6729

Next to the Hale'iwa Post Office

Earth Day 2013 Celebration

Aloha and welcome to Earth Day weekend 2013. Yes, these funny people who care about this sacred Earth are still around and in your community. These same people who marched in Hale'iwa March 2nd, 1270 strong. They marched to educate our rural community about GMO sect related activities that surround our homes and businesses here on the North Shore. Earth Day celebrates expanding our awareness on taking care of our planet to hand down to our children and grandchildren.

Earth Day does not include the unchecked use of chemical fertilizers, pesticides, herbicides and fungicides that are currently being used in our community.

Come join us for our Earth Day sale, featuring a non GMO products special sale. Everything is 20% off Saturday, April 20th and Sunday, April 21st. Let's have Earth Day everyday. Peace - Carter

Next Issue: May 1, 2013
Mother's Day Issue
Deadline Date: April 18, 2013

North Shore Recycling Service

*Curbside recycling pickup services
for homes and businesses*

- Two pickups per month at only \$24 per month (2 curbside recycling bins included)
- 100% of the recyclable donated to non-profit organization

Visit us at www.ocr2000.com

To sign up call us at 262-2724 or
email: recycle@ocr2000.com

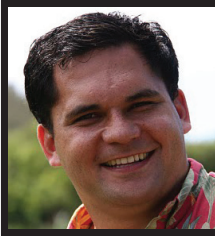
No job too big or small.
Located at the Waiialua Sugar Mill.



**CERTIFIED WELDING
FABRICATION & REPAIRS
OF ALL METALS**

**fab
ab**
808

628.8719



State Representative
Richard Lee Fale
Serving You in District 47

Give Parents A Say in Early Education Initiatives

There has been a lot of buzz this session about Governor Neil Abercrombie's proposal to create a state-funded early childhood education program in Hawaii. In his State of the State address this year, he cited the failure to address early education and development as Hawaii's greatest unfunded liability. Through the Governor, two early education bills were introduced this session to fund preschool education for four-year-old children with state funds. The House bill did not pass; House finance committee Chair, Rep. Sylvia Luke, had concerns about how the State could afford to fund early childhood education. The Senate version of the same bill (SB1095) moved out of the Senate and crossed over to the House.

Early childhood education already exists in the State of Hawaii. Though the majority of existing early education programs is private, there is also the federally funded early childhood education program called Headstart. Moreover, our public schools, particularly in the rural parts of our state like the North Shore, are aching for the resources and support they deserve to provide quality education to our K-12 students. The question that must be asked is, do we want the State of Hawaii to begin funding early childhood education as well?

My main concern with this measure is the balance of public input and state action. Like we saw with the Public Land Development Corporation, lawmakers gave the green light to major legislation only to be received with uncertainty and grave concerns by their constituents. This resulted in the repeal of the PLDC. State-funded early education is a fundamental shift in public policy and we lawmakers must be careful to proceed cautiously and with sufficient input from our constituents. Specifically, I believe this initiative will require a constitutional amendment.

Currently, the Constitution of the State of Hawaii prohibits appropriations for private purposes (Article 7, Sec 4). SB1095 proposes using State of Hawaii money to fund private preschools, a constitutional violation. In order to fix the constitutional prohibition of using public monies to fund private education, the governor introduced SB1084, which is still currently being debated by the legislature, which proposes a change to the Hawaii State Constitution to address this. At the same time, the governor is asking the legislature to appropriate about \$25 million for early childhood education.

The governor wants the legislature to approve \$25 million dollars for a program (that could balloon to \$125 million a year in the next few years) before the public has voted on the proposed constitutional amendment. In other words, the governor is asking for money to be appropriated for an unconstitutional purpose.

I believe that the prudent thing to do at this point is to give the public adequate time for input. The public should be able to consider this measure first and be allowed to vote on any proposed constitutional amendment before any funds are appropriated. The Hawaii State Teachers Association has gone on record in opposition of SB1084. Their web site states, "SB1084 uses taxpayer funds to potentially reduce support for public education by redirecting funds for public education to private early childhood programs." I echo their sentiments and so do many of the constituents I have spoken with.

Before we sign a check using hard-working, taxpayers' money, let's give the public a chance to share how they want their money to be spent. Most importantly, it is our responsibility to work within the framework of our existing laws, including the state constitution, before pushing through legislation, no matter how noble its efforts may be. The public needs more time to weigh these issues and decide if it is a good idea for public funds and taxpayer dollars to be spent on private early childhood education in our state.



PAALAA KAI BAKERY
 'Your Hometown North Shore Bakery'
SUPER SAVER SPECIAL

When you come by to pickup your FREE Carnival Scrip Tickets... clip and bring along this discount ad coupon in the morning to get your favorite treat as you start off the day!



OFF ANY ONE BAKED GOODS CLAIMED BETWEEN 7 ~ 11 AM



EXPIRES May 1, 2013
 Not valid with other offers, promotions, or discount cards



Representative
Lauren Cheape
Serving You in District 45

to be able to showcase wonderful works of art from local artists Heather Brown, Al Furtado, Mark Howard, and Clark Little. The unique style of their original pieces truly brought a slice of the North Shore to the Capitol. Even though the event has passed for this year, the masterpieces are still on display. If you get the chance the stop by the Capitol, please come by my office to check them out and talk story.

Aloha,

This year's Legislative Session has reached yet another milestone: the Second Crossover and the passing of all filing deadlines. This means that every Bill and Resolution that is going to be considered this Session has already been heard. All legislation is currently in the process of being reconciled between the State Senate and the State House of Representatives. This process is known as "Conference," and it happens when members of the Senate meet with members of the House to determine exactly how the two Chambers are going to compromise to pass the exact same legislation. What can be reconciled will be put up for a vote in each Chamber to be either voted down or passed on to the Governor for his approval.

At this crucial juncture it is just as important as ever to continue to contact your Legislators and help to inform their decisions. The end of the Session is right around the corner, so don't take your eye off the prize now! Continue to monitor the legislation that is important to you to ensure that your Bills make it all the way to the finish line.

This year's Art at the Capitol Event was a resounding success! Residents came from all over the island to view art from both the State Archives and private collections. My office was fortunate enough



We were also graced with the presence of Waialua Elementary School's entire 1st Grade class! The students took a field trip to the Capitol to meet and greet legislators on the day of the Second Crossover. Students were able to see Legislator's offices, ask questions, and were even able to walk on the Chamber floor during a recess. Consequently, the students also learned a new meaning for their favorite word, "recess!" Thank you to all the teachers and parents who made their trip possible!

DRAFTPLANS HAWAII

- Over 10,000 floor plans & blueprints available for purchase online. Gather ideas for your own design.
- Drafting Service available for new home designs, additions, renovations, decks, fence, rock walls, etc.
- Free property specifications & title search info.

www.draftplans.com

Call for free estimates:
265-0035

BREAKFAST
7 AM to 11 AM DAILY

PIZZA BOB'S

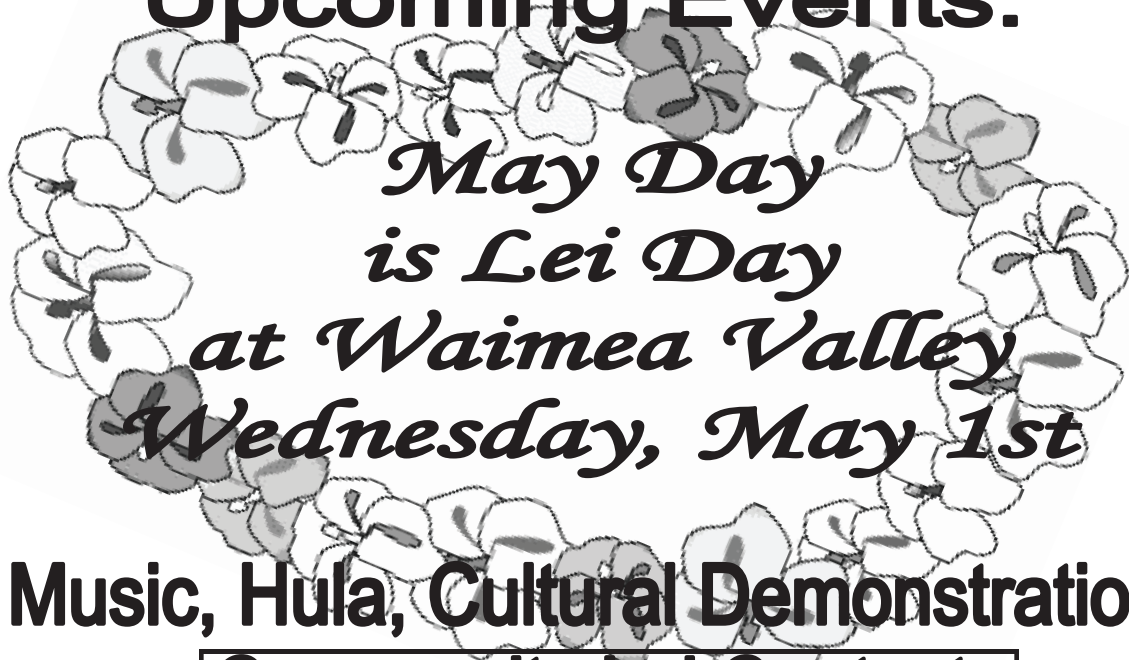
Haleiwa Town Center - 637-5095

PLUS \$2.00 Off with this Coupon

Some Restrictions Apply. See Restaurant for Details.
When Ordering Regular Priced Items. Good Anytime. One Coupon Per Person.
Can Not Be Combined with Other Discounts. Expires 05/31/2013.

Waimea Valley

Upcoming Events:



Music, Hula, Cultural Demonstrations

Community Lei Contests
Cash Prizes Awarded

**This Event is
FREE**

*Please see our
Website for
more information*

**Keiki and Adult Contests:
1st, 2nd & 3rd
place winners for each category**

Mother's Day Brunch
 *Sunday, May 12th* 

\$38.00 for Adults, \$19.00 for Children (age 4-12)

*Price Includes Valley Admission
~Reservations Recommended~*



59-864 Kamehameha Hwy.
 Hale`iwa, HI 96712
 (808) 638-7766 www.waimeavalley.net
 Open daily from 9:00am to 5:00pm



Country Talk Story with Choon James

Neighbors and Neighborhoods

Recently, the news reported a neighbor trespassing into another neighbor's yard to feed food to the pit bulls to threaten their well-being.

The news, of course, did not explain how the situation escalated to that point.

Then, there are neighbors who raise too many chickens that crow day and night.

I hope these are isolated cases. Most of us have good neighbors. We have neighbors we still keep in contact with after they relocate many years ago. Our neighbor calls us when we forget to close our garage doors at night. We also have neighbors who share their fish or pig hunting catch with us or weed-wack our grass. We're fortunate!

Good neighbors practice basic rules of decency and good behavior. Most of us live in close proximity of each other. Chances are high that urban sprawl does not become urban brawl if we subscribe to the following:

- Recognize that homes are comfort zones and crucial private space for most people.
- Respect your neighbor's property and boundaries.
- Respect your neighbors' privacy.
- Do not allow pets to use the neighbors' yard for roaming, relief and control incessant barking.
- Control the volume of the music and partying.
- Do not block your neighbor's mailbox or trash-cans or driveway.
- Do not destroy the peace and quiet of the neighbors with illegal activities.
- Fruits overhanging into your neighbors' yard are your neighbors'. They have been cleaning the tree's leaves.
- Be careful with chemical and household sprays so as not to affect the neighbors.
- Watch the directions of the wind with barbecue. Don't smoke your neighbors out.

Choon James has been a real estate broker for over 20 years. She hosts "Country Talk Story" on Olelo Television every Saturday at 5:00 pm on Channel 55. Choon can be reached at 808 293 9111 or ChoonJamesHawaii@gmail.com



Elizabeth Lahilahi Napuakaumakani Webb was born on April 12, 1862 at Kapuukolo, Honolulu and died January 2, 1949 at Lunalilo Home at the age of 86 years old. She was a lady in waiting for Queen Liliuokalani. For the purpose of this writing I wish to acknowledge her relationship here in Waialua Moku. As a past employee of Bishop Museum and Lifetime Historian of The Daughters of Hawaii (founded at Dillingham Ranch at Mokuleia in 1903), she was instrumental in gathering information from Kupuna about Waialua featured in publications entitled Archeology of Oahu (McAllister-1933) and The Hawaiian Planter (Handy-1940) later compiled into Sites of Oahu. This included an organized site visit to Kukaniloko Birth Stones (Daughters of Hawaii were the first stewards of Kukaniloko) with Waialua Kupuna.

She was beloved and hanai by my Grandfather's (David Peahi Keao Jr) Ohana who were among those that shared information about Waialua Moku however, with an emphasis on the Northwest Coastline encompassing the Ahupuaa of Kamananui, Mokuleia, Kikahi, Aukuu, Kawaihapai, Kealia and Kaena which they had much land holdings from the time of the Mahele or earlier. Among her cultural expertise was lauhalala weaving. It was her, Annie Keahipaka (Great-Great Grand Aunt) and my Great Grandmother Clara Napuakekau Kakulu Keao that wove the lauhalala mats for the flooring of Haleiwa Hotel. This is first hand knowledge instilled to me from my Grandfather not known to our Ohana and Community because he came from an older generation with direct interaction with these Kupuna. My Grandfather and his Ohana shared because of preservation for the future. The publications of Samuel Manaiakalani Kamakau (he was born in 1815 at Mokuleia) were translated by a committee that included her. Lastly, she was a member of the Outdoor Circle for over 30 years. The Outdoor Circle is very active here on the North Shore. This is a long overdue hookupu for this highly deserving Kupuna who contributed to Waialua and the Hawaiian Culture. Me Ke Aloha Pumehana.



Hawai'i Polo Club announces 2013 season schedule and teams



The Hawai'i Polo Club is announcing the teams who will be competing in its 2013 polo season which, for the first time, will split the season with a hiatus in mid-summer.

Polo enthusiasts should mark their calendars for the matches when their favorite teams are playing. Particularly popular are the matches when international teams come to Hawai'i to challenge our local

players. China, Argentina, New Zealand and India will be visiting Hawai'i and will be playing in several matches.

The Spring Season launches on Sunday, April 7 and ends Sunday, July 14. The Fall Season begins on September 1st and ends on Sunday, October 27th. All matches occur on Sundays at 2:00 p.m.; gates open at 11:00 a.m. for picnics.

FULL SEASON SCHEDULE:

April 7 OPENING DAY - Kahanamoku Trophy, Wealth Strategy Partners vs Equus Hotel
 April 14 Bourne Cup - Equus Hotel vs Dawson International
 April 21 Equus Hotel vs Noh Foods
 April 28 Army vs Navy
 May 5 Maui vs Oahu
 May 12 China vs Hawaii
 May 19 Wealth Strategy Partners vs Equus Hotel
 May 26 Hawaii Polo Life "White Party"
 June 2 Argentina vs Hawaii
 June 9 Argentina vs Hawaii
 June 16 Al Lopaka Trophy- Wealth Strategy Partners vs Bacardi
 June 23 New Zealand vs Hawaii

June 30 USPA Governor's Cup
 July 7 USPA Master's Cup
 July 14 Fred Dailey Trophy - USPA Intra Circuit
 July 15 to August 31 SEASON BREAK
 September 1 Labor Day - Equus Hotel vs Dawson International
 September 8 India vs Hawaii
 September 15 India vs Hawaii
 September 22 Wealth Strategy Partners vs Equus Hotel
 September 29 Texas vs Hawaii
 October 6 Wealth Strategy Partners vs Noh Foods
 October 13 China vs Hawaii
 October 20 USPA Sportsmanship Cup
 October 27 USPA Ambassadors Cup



MASSIVE CLEARANCE SALE! NOW through APRIL 30th!!

50-80% OFF PRICES SLASHED!!

FRUIT & FLOWERING TREES, PALMS

Gardenias, Hibiscus, Ti Plants, Mockorange, Groundcovers, Naupaka & More

The farmer is turning 60!!!
Time to CELEBRATE!!

PH. (808) 341-1992

Farmer & The Baker LLC.

←WAIALUA · KAENA PT→
FARRINGTON HWY.
Ohio St. Mahoe'a St.
KIKOU ST.
Crozier Dr.

Oahu North Shore

MASTERCARD * VISA * AMERICAN EXPRESS

5th Annual Business Expo presented by Turtle Bay Resort "Prepare Today, Succeed Tomorrow"

Panel on "The New Health Care Law & What It Will Mean to You"

- Tom Matsuda – Governors Office, responsible for implementing the new law in Hawaii
- Rose Hughes – Director of Communications for Hawaii Health Connector, the insurance retailer responsible for all the navigators, will explain their role in new law
- Tony Saguibo – Vice President of Govt. Programs for HMSA, what the new law will mean to the insurance carriers and to the insurance rates for employers
- Matt Delaney – CEO of Hawaii Human Resources, what employers need to know to comply with the new law
- Christopher Flanders, D.O. – Executive Director of the Hawaii Medical Association, how the law will impact patient care

Breakout Sessions

- "The M.A.C. of Marketing"–Kathleen Pahinui, VP of Laird Christianson Advertising & Robin Erb, Marketing Director for Xcel Internatl. Marketing basics and avoiding some common mistakes
- "Pono Social Media Strategies with Purpose and

Precision"–Lori Tian-Sailiata & Vera Williams from Content Marketing. Facebook, Twitter, Videos and More

- "Surviving Health Care Reform"–Tony Malone of Hawaii Human Resources. Implementing the Affordable Care Act
- "Upcoming Tax Changes"–Melissa Fritz of Liberty Tax
- "How to Tune up Your Business Plan [for existing businesses]"–Joseph Burns of Hawaii Small Business Development Center
- "Start-up Strategies for the Multifaceted Entrepreneur"–Sloane Ketchum from Maya Bella Boutique. Learn how to get out of your way and on with your business with simple strategies that will get your business up and running!
- "The Challenge of a Safe Food Chain"–Tisha Uyehara from Dept. of Agriculture
- "Employee Safety 101 for Employers" –Jim Newberry, Risk Control Manager, from Island Insurance. This workshop will help you comply with the laws regarding employee safety
- "Honey Bee Health and What You Can Do to Help"–Anthony Maxfield, President of the Hawaii Beekeepers Association (not confirmed).

NORTH SHORE CHAMBER OF COMMERCE
5TH ANNUAL BUSINESS EXPO
 PRESENTED BY TURTLE BAY RESORT
Prepare Today, Succeed Tomorrow



TURTLE BAY
HAUAI'S FABLED NORTH SHORE

Friday, May 10, 2013 • 8:00am - 6:30pm • Kuilima Ballroom, Turtle Bay Resort



ATTENDEE & EXHIBITOR REGISTRATION

Register by April 12 for the Early Bird Discount!

Attendees

Includes continental breakfast, sandwich buffet, Pau Hana Reception, 5 seminars

	By April 12	April 13 - May 3
North Shore Chamber of Commerce Members	<input type="checkbox"/> \$60	<input type="checkbox"/> \$70
Non-Members	<input type="checkbox"/> \$75	<input type="checkbox"/> \$85
Students	<input type="checkbox"/> \$30	<input type="checkbox"/> \$40

Exhibitors

Includes booth space (1 booth sign, 1 draped 6' table, 2 chairs) plus 1 attendee registration

Exhibitor Name (For Booth Sign)	By April 12	April 13 - May 3
North Shore Chamber of Commerce Members	<input type="checkbox"/> \$250	<input type="checkbox"/> \$270
Non-Members Plus Membership *	<input type="checkbox"/> \$385	<input type="checkbox"/> \$400
Non-Members	<input type="checkbox"/> \$430	<input type="checkbox"/> \$450

* **10% discount on North Shore Chamber of Commerce membership for joining today!** Membership benefits include networking opportunities; free North Shore Chamber of Commerce Web site listing with link to your Web site; discounts on events, meetings, workshops; historic preservation; and more

Optional Additional Registration(s)

_____ Attendees X \$50 Per Attendee = \$ _____

Additional Attendee Name(s) _____

GRAND TOTAL \$ _____

Registration Information

First Name _____ Last Name _____

Attendee / Exhibitor Name (For Badge) *Enter additional attendee badge names at left.* _____

Title _____

Organization (No Acronyms Please) _____

Street Address _____

City _____ State _____ Zip _____

Phone _____ Fax _____

Email _____

Emergency Contact Name _____ Emergency Contact Phone _____

Payment Information

Check Enclosed: Payable to NORTH SHORE CHAMBER OF COMMERCE

Credit Card: Please charge my Visa Mastercard

Name on Credit Card _____

Credit Card # _____ Expiration Date _____

Signature _____

Please complete all information and mail or fax registration form plus payment to the North Shore Chamber of Commerce. You may also call to register by phone. Please have all registration information and payment method ready when calling.

NORTH SHORE CHAMBER OF COMMERCE • GONORTHSHORE.ORG
 66-434 B KAMEHAMEHA HIGHWAY • HALEIWA, HI 96712 • PHONE: (808) 637-4558 • FAX: (808) 637-4556 • EMAIL: info@gonorthshore.org

Turtle Bay Resort to host annual North Shore Ocean Fest

The North Shore Ocean Education Coalition, which supports ocean education for Hawaii's youth, will hold its annual North Shore Ocean Fest fundraising benefit at Turtle Bay Resort on Saturday, June 1, 2013, 12-6 p.m.; free and open to the public.

The free celebration will include notable speakers; film screenings; a silent auction; educational activities; vendor booths; locally sourced cuisine; and music and entertainment. The 2013 Ocean Fest will also include poster and literacy contests themed "Malama i Ke Kai (Protect the Ocean)," open for submissions from students at all Hawaii K-12 schools from April 1-30, 2013. This year we will also sponsor a Film Fest competition for short films on the ocean, culture and community.

"After the success of last year's partnership with Turtle Bay to host Ocean Fest, we have since organized several educational efforts at the resort, including the popular 'Welcome Back Whales' event in January," said Dotty Kelly, coordinator of the North Shore Ocean Fest. "We are excited to offer a full schedule of action-packed activities at this year's Ocean Fest, both in and out of the water, for our keiki to learn

about environmental conservation."

The North Shore Ocean Education Coalition includes involvement from the NOAA Fisheries service; the Hawaiian Islands Humpback Whale National Marine Sanctuary; the Monk Seal Foundation; the nonprofit Malama Pupuokea-Waimea; education and environmental stewardship program Navigating Change; Hui O Hau'ula and Turtle Bay Resort. The coalition assists in providing curriculum, materials, and learning opportunities to teach youth and the community to care for the ocean.

"This event is inspired by the value of Kuleana—or responsibility—to ensure the sustainability of the ocean through education and protection," said Drew Stotesbury, CEO of Turtle Bay. "We invite everyone, especially our keiki, to participate in Ocean Fest and learn from Hawaii's top leaders in ocean conservation."

For more information on the 2013 Ocean Fest and poster, literacy and film contests, to make a donation, or to complete a booth application, visit www.nsoec@wordpress.com or call (808) 255-6944.



Hawaii ISA World Masters Team

(above pic) ISA World Masters Team, Hawaii, prepare with Banzai Sushi for the long trip to Ecuador. (left to right) Love Hodel, Sunny Garcia, Mike Latronic, Mike Takahashi, Shuji Kasuya not present Kalani Robb, Reuben Balmores, Rochelle Ballard, World Master Surfing Championship, April 6-14, Ecuador. Photo by Banzai Productions.



www.oc16.tv

BANZAI NORTH SHORE WIRELESS

The Hawaii's Masters team is off defending their title, this time in the beautiful village town of Montañita in the Province of Santa Elena, Ecuador. A total of 21 countries and over 130 athletes are competing in the competition and the Hawaii team is the defending Champion. "This event is not as much money driven," said Sunny Garcia. "It is more relaxed and is something I always wanted to compete in as an amateur, now I have that chance." Defending champion Garcia, competes in the Grand Masters Division along with teammate Love Hodel from the North Shore. The Kahunas division consists of team captain Mike Latronic and Reuben Balmores. Shuji Kasuya who hails from Japan is in Grand Masters and Rochelle Ballard is the Women's Master's representative who won the division last year. The team will be mixing beach sand from all corners of the islands in the opening ceremony. It takes a big support team to be able to be included in the International event. The team would like to thank their supporters HMSA, Duke's, Tamba, Free Style, Maui Jim, Surf Break Rentals and Banzai Sushi!

The area in Ecuador has a great right hand point break, Montanita. the break is a mix of Sunset and Treastles in California says the team. The confirmed countries are Argentina, Australia, Brazil, Chile, Costa Rica, Denmark, Dominican Republic, Ecuador, France, Great Britain, Hawaii, Japan, Mexico, Panama, Peru, Puerto Rico, South Africa, Spain, Uruguay, USA and Venezuela. The ISA, International Surfing Association is recognized by the International Olympic Committee as the governing group for surfing. It was founded in 1964. Hawaii Masters Surfing is "dedicated to ocean awareness and preservation and documenting, reflecting and sharing the stoke and youthful exuberance of surfing." Go Hawaii!

Have you heard about the next big thing in kite surfing? It's the North Shore's Moona Whyte who won the final event of the World Tour in Maui recently. Whyte has confirmed she will be competing on the whole tour this year which starts in Portugal at Guioncho Beach in June, on the 27th. The tour will head to Gran Canaria, Puerto Rico and then Maui again for the final event. Moona is over the moon with excitement at the chance to travel. "I think I can do well and with my sponsors I hope to be able to promote the sport," said Whyte. She is supported by Cabrinha Kites, Baby-G Watches, NP Surf and Gatorz Eyewear Hawaii. Good luck on the tour Moona!

We all know of Jeff Hubbard, the champion bodyboarder known for his inventive air maneuvers. The

Mayor of Kauai, Bernard Carvalho, declared April 2nd "Jeff Hubbard Day." Jeff is a three time World Champion and 5 time U.S. Champion. He graduated with a business degree in marketing from Hawaii Pacific University and organizes the Keike Oceanfest every year. Congrats Jeff.

North Shore surfer Coco Ho made her first final of the year at the TSB Bank New Zealand Surf Festival. In decent 3-4 foot waves Coco charged her way into the final with Courtney Conologue just missing the win. The event is number 4 of 7 on the Association of Surfing Professionals Tour and bumps Coco up to 7th overall. "This was a confidence booster and my boards are working well so I am looking forward to the next stop," said Coco. The tour continues in Brazil.

Hawaii's Carissa Moore is leading the tour at this point!

On the mens side Sebastian Zietz, Kauai and Dusty Payne, Maui are at 23rd, John John Florence, Oahu was injured and has one equal 13th and Fred Pataccia, Oahu is injured and has not competed this year. Next event is May 8-19 in Rio de Janeiro, Brazil.

Here is the scoop on other news. The Surf Talk Story series starts up again at Surfer Bar April 18th along with lots of great music always. The Women's Waimea Bay Championship, a big wave contest, is cancelled due to no big surf for the given waiting period, April 22 through May 5th, 2013. Although April has has some unusual big waves the surf forecasters are not predicting any big swells past April 15th so contest directors have postponed the festivities until 2014. There is a meeting for the new proposed surf contest rules coming up in May 2 at the Sunset Beach Recreation Center. Also you can request the rules and changes by writing to the Dept. of Parks and Recreation in Kapolei.

Got any news, yell at me at banzaib@hawaii.rr.com, Aloha



BANZAI PRODUCTIONS

**Video - Media
Need Web Video
Ask About Our
Special Rates**

808-781-2535



Waialua - The Saga of the North Shore

Chapter 31 - La'anui la-heu'ole

By Kalewa

Laanui's marriage to Pi'ia was the perfect match. Being a very high ranking princess, Pi'ia could do pretty much as she pleased, within the constraints of the ancient kapus which were still being followed. She found the eating kapus most irksome but, like the other ladies in her circle, found ample excuses to follow western customs when in the company of white men, especially aboard the larger ships that were visiting Honolulu in ever increasing numbers. She seldom had less than a hundred followers in her immediate vicinity, competing with each other to please her.

La'anui, being of a lesser rank, had no such following, just a few regulars. He was never consulted about matters of any importance. His days were spent amongst his male cousins, just being chiefs. They were all expected to stay close to Kamehameha's court or, if traveling, to do so with the chiefs who were directly above them. La'anui was directly under his brother in law, Ke'eaumoku Cox, and then the few dozen other high chiefs who had an even higher birth-rank. Many of them had some authority to have him do their bidding, including his wife.

Cox had much business on Maui and in Waialua, and he often brought La'anui along to handle the collection of rents, taxes and tribute, which were pretty much the same things. Cox was directly responsible for bringing goods in from his holdings for the exclusive use of Kamehameha. His ability to deliver "wai-wai" made him a favorite of the King, who tended to look the other way when Cox made some profit for himself.

La'anui rarely missed a chance to travel to Waialua. He was always anxious to get aboard whatever vessel was going that way to collect sandalwood or produce. He was usually the first to disembark in order to grab a surfboard from the nearest hale and ho'ohē'e nalu. If the conditions were right, he and a friend or two would grab a canoe and sail out for some deep sea fish. If he were with Cox they would stay at his hale in Kamanui, near Kapukapu Akea and Pohaku Lanai. If Pi'ia were along, he would sleep closer to her

sanctuary between Lokoe'a Pond and the Anahulu River.

The Makahiki of 1811 was to be Kamehameha's last trip around O'ahu. It was assumed by everyone in Honolulu that it would be a bountiful one. The King had been encouraging agriculture for the past few years, more in pursuit of trade commodities than the traditional tribute of earlier times. It was hoped that the remaining soldiers who had never gotten the chance to invade Kaua'i had found industrious ways to spend their time, when not being called upon to



gather sandalwood.

Rather than travel by land, along with the priests carrying the Makahiki Standards, most of the chiefs boarded ships or canoes of various sizes. The King, Queens and their people boarded the largest vessels, some owned by Kamehameha and all under the sailing command of an experienced Haole captain. The smaller schooners often had one of the young Hawaiian chiefs commanding his own people.

At the age of fifteen, La'anui was given command of a newly purchased, 60-ton schooner from the Columbia River. Cox, had promised Captain Wimbrow an amount of sandalwood more than equal to her capacity for her, then immediately presented her to Kamehameha, who gave it back to be used for his benefit.

Capena La'anui scrambled about town, then sent his best man, Kahalau, around the fleet gathering as much gear as necessary for a grand adventure. He soon had the sleek schooner properly rigged for racing and deep sea fishing.

La'anui was ha'aeo proud of his vessel once she was painted, polished and dedicated with pua flowers and fine ferns. She certainly looked like she would fly through the water. He named her "IWA".

RELAY FOR LIFE 2013

Help the Ko'olauloa and North Shore community fight back against cancer and join us for our annual Relay For Life of Ko'olauloa!

FRIDAY, MAY 24 - SATURDAY, MAY 25
6:00 P.M. TO 6:00 A.M.
KAHUKU DISTRICT PARK

Contact Event Chair Don Porter at
rflkoolauloa@gmail.com or (808) 548-8444

We're still looking for sponsors, teams and participants, so please contact us today!

Bring your business or family down for an evening full of food, activities, entertainment and more. Join us for an evening to celebrate, remember and fight back against cancer.



Mahalo!

From the Ripp family

We would like to thank all the gracious donors and sponsors who helped make this event happen:

- North Shore Equipment Rentals
- Jameson's by the Sea
- Matt Tsuruta "Worldwide Dream Builders"
- Aloha Computer Consulting
- Scarfini "Greg"
- Surf and Sea
- Sterman Realty
- Scoop of Paradise
- Wave Riding Vehicles
- Ace Hardware Haleiwa
- Salon Atlantis
- Camp Mokuleia
- Jen Sheridan
- Opals Thai Food
- L&L Hawaiian BBQ
- Perry Dane
- Gecko Inc "Ed"
- North Shore News

Of course special thanks to the "RAFB"
(Ron Artis Family Band)

Special personal acknowledgement and appreciation to:

- Hutson Lotz • Monica Willenborg
- Gracie Rynn • Teresa & Tim Barron

We would also like to give a big thanks, on the Ripp's behalf, to all the good people that took the time to come out and support and contribute to the overall success of the fundraiser. Thank you and may God Bless You.

Quality Tile Crafts

"No job too big or small!"

Specializing in Ceramic Tile,
Travertine, Marble, & Slate

Kevin Wilson

cell (808) 864-4985 office (808) 638-8492
www.QualityTileCrafts.com Free Est.

N.S.P.T

NORTH SHORE PRO TRAINING

BRINGING THE MOST EPIC FITNESS TRAINING
TO THE NORTH SHORE, OAHU

**BIG WAVE SURFING
SUP BOARDING
PADDLE**

OR JUST LOOKING TO BE EPIC!!!

BEGINNING APRIL, 29TH 2013

NSPROTRAINING@HOTMAIL.COM
808 638 1410

Waialua

General Store

Across Waialua Post Office
Next to Laundromat

Onolicious

Steak Plate Special
with FREE Soda
Wednesdays \$7.95

Most Delicious Homemade Filipino
Food & Deserts on the North Shore
EVERY DAY

Business Hours: 10 a.m. – 7 p.m.
7 Days a Week

Phone: (808) 637-3131



(left to right) Meilan Muto, Gabriel Chun, Cohen Matute, Cire Laguna, Elijah Vega.

Aloha! Meet the North Shore Cub Scout Pack 269!

The Cub Scout Promise:

**I promise to do my best
To do my duty to God and my country,
To help other people, and
To obey the Law of the Pack.**

About six months ago, five boys learned to recite this Cub Scout promise as one of the requirements needed to obtain their first badge in Cub Scouting, the Bobcat. These boys (three first graders and two second graders) are members of the North Shore Cub Scout Pack 269, which is based in the Waialua/Hale'iwa area. Since forming our pack in September of last year, we have already participated in several events as a group (the Hale'iwa Christmas Parade and the Cub Scouts pinewood derby), have had various activities (kite flying, bicycle-safety training, and trash clean-ups, to name just a few), and have made visits to the Waialua fire station, Foster botanical garden, and even the North Shore News office!

There is also a whole range of fun and educational activities we are planning to have in the near future. Some of these include: recycling conservation projects, our first overnight campout in early May, volunteer

projects at Waimea Valley and the North Shore food bank, hiking trips, and participating in more events with other scouts around the islands such as summer camps and various trainings.

Since becoming Scouts, the boys have worked hard at completing various individual and group achievements from their cub scout handbooks and will shortly be obtaining their Tiger Cub badges (1st graders) and Wolf badges (2nd graders) to go next to their Bobcat badges on their uniforms. They have already learned and experienced many new things and have had a lot of fun at the same time.

If you have a son in the 1st to 5th grade and would like to be a part of our Pack or have any questions, please feel free to contact Jess Kawachi at jess.kawachi@yahoo.com. We have meetings on the first and third Mondays of every month from 5:00 p.m. at our chartered organization, which is the Waialua Community Association in Hale'iwa. Come and join us!

**Join Sea Shepherd Hawaii for an
Earth Day marine debris and
beach clean-up, Sunday, April 21
at Haleiwa Harbor (across from
Jameson's), 2-6 p.m.**

Waiialua Robotics Team Luau Fundraiser

Tickets are now on sale for the Sixth Annual Dole Plantation Benefit Luau for the Waiialua High School Robotics Team. All proceeds from the event, scheduled for Thursday, May 9 from 5:30 to 8:30 p.m., will support the team and its travel to competitions across the nation.

Island favorites ManoaDNA will perform. The Na Hoku Hanohano Award nominees earn rave reviews for their live performances and won the 2007 Hawaii Music Award for Album on the Year.

Individual luau tickets are \$40. They are available for sale through April 30 at Dole Plantation. Tickets may also be purchased through robotics team members or by contacting Waiialua High & Intermediate School at 637.8200.

Castle & Cooke's Dole Plantation began organizing a luau fundraiser on behalf of the Waiialua Robotics program in 2007. Since that first luau, the company has presented \$50,000 to Glenn Lee, Waiialua teacher and lead coordinator for the team.

Each year, the Waiialua robotics team travels to competitions held in various locations around the country, but it struggles to raise needed funds. Dole Plantation conceived of the robotics luau as a benefit to support travel to these critical competitions.

The Waiialua team was Hawaii's first robotics-related program and is a national leader that was selected for the Hall of Fame in 2011. Just in the month of March, the team emerged as the champion of both the 2013 Utah Regional and the Indiana's Boilermaker Regional.

"The Dole Plantation fundraiser is one of the most important events that our team participates in," explains Lee of Waiialua Robotics. "Without the generous support that we receive from the luau, our team would not be able to participate in FIRST Robotics competitions, which allow our students the opportunity to participate in science, technology, engineering and math-related activities."

"Waiialua Robotics embodies the values of teamwork, commitment and responsibility," says Mike Moon, director of operations for Dole Plantation. "As a result, this is an award-winning program that has become a pathway to a bright future for kids from this community."

The addition of live musical entertainers ManoaDNA is a new element of the popular fundraiser this year. The benefit will also feature Hawaiian food and a silent auction; a highlight will be the 45-minute demonstration of robotic technology by the Waiialua team.

Dole Plantation is one of Hawaii's most popular attractions, welcoming more than one million visitors annually. Located at 64-1550 Kamehameha Highway outside Wahiawa Town, the plantation is open from 9:30 a.m. to 5:30 p.m. daily. It offers visitors and kama'aina the complete "pineapple experience" with the Pineapple Garden Maze, the Pineapple Express train, the Plantation Garden and the famous Dole Whip®.

For more information, visit dole-plantation.com.

Health Fair at Kahuku High School

Students at Kahuku High School Learning Center will be hosting a Health Fair in the Kahuku HS cafeteria from 6 to 8 p.m. on April 25. Students in the Health Learning Center and other community health professionals will be setting up information booths to share knowledge and activities to help support a healthy community. Please come for an enjoyable evening.

North Shore Career Fair Information

Liliuokalani Protestant Church
66-090 Kamehameha Highway
Haleiwa, Hawaii 96712

May 4, 2013 • 11 a.m. to 4 p.m.

The North Shore Career Fair was created to prepare our communities Graduating Seniors of 2013, attract those that are unemployed or laid off, in the process of changing careers, or entering the working field.

Please keep in mind we also want to address job loss and are about to undergo a major change in funding. Budget cuts may result in more job loss in our communities.

Jerry's Pizza

637-8866

Fresh Pizza • Subs • Pasta & Salad!
Delivery in Haleiwa Town & Waiialua
Open 7 days a week • 7 a.m.-9 p.m.

Waiialua Chop Suey

637-1688

Waiialua Shopping Center
Open Everyday 8am - 7pm
Delicious catering for Grad
Parties - Receptions - Every Occasion

BULLETIN BOARD



Specializing in vegetarian foods, vegan foods, whole foods, organic food. Wheat free, dairy free, raw foods, gluten free. A complete selection of natural foods for 37 years. Make earth day, everyday. Open 7 days. Mon.-Sat. 9am-6pm. Sun. 9am-5pm

66-445 Kam. Hwy
Haleiwa, Hawaii 96712
Next to the Post Office
808-637-6729 • 808-637-1922 fax



DR. PORTER TURNBULL
Chiropractic Orthopedist
(808) 638-8740
Appointments available Mon.-Sat.
(evenings by appointment)

- Industrial accidents & auto injuries
- Sports injuries • Spinal care
- Safe, Effective, and Gentle

N-C PLUMBING & SUPPLY

Cont. Lic. No. C-8913



- RESIDENTIAL & COMMERCIAL SALES & SERVICE
- CONTRACTING & DESIGN • HOME PLUMBING SERVICE
- PLUMBING FIXTURES, HEATERS • FREE ESTIMATES

Nestor P. Calilao (Owner) Bus: 637-8662
P.O. Box 769 Res: 638-5157
Waialua, HI 96791 Cellular: 372-8718
email: nncplumbing@hawaii.rr.com



JAY OKU
Senior Mortgage Banker
NMLS # 218211

tel: 808.393.0707 fax: 888.961.8718
email joku@envoymortgage.com
www.jayoku.com



Restaurant & Margarita Bar

- DAILY SPECIALS -

Island Fresh Fish Tacos
Premium Margaritas

Large Parties Welcome Open Daily 9:30am - 9:30pm
637-3059 • North Shore Marketplace • Haleiwa
www.CHOLOSMEXICAN.com



COWPER CONSTRUCTION

LIC. #AG 18275

GENERAL ENGINEERING CONTRACTOR

Full Service Sitework
Contractor
Septic Systems & Tanks
25 yr. exp.

Michael Cowper 638-7200
cowperhawaii.com



Factory Showroom also available
... Lost, South Point NSP & Accessories
Located at the Sugar Mill
638-0050 • 366-2282
www.SCHAPER-HAWAII

Traditional Lomilomi

"Go see Christina, your pain will disappear"
— Ken, The Barber

Open daily next to Haleiwa Giovanni's
across from McDonald's. Walk-ins welcome.
(50+ years experience)

Christina mae2542 295-1786

Munden Design & Build

Lic.#BC19632

Design • Plans • Permits • Construction
Additions & New Residences
808 391-8616

Providing quality work since 1978

J.B. TILE & CARPET

JOHN BURTCH

Free estimates
25 years experience
(808) 226-1023



Our next service at Hale'iwa Beach Park

Sunday, April 28 9 Year Anniversary



Trish Coder
Photos

Lunch for everyone at 12 noon!

SURFERS, SAINTS & SINNERS ARE WELCOME!

OAMC is a community outreach made possible by many generous supporters and volunteers. If you would like to support or volunteer for the OAMC call 690-0377.

The OAMC is scheduled to meet on the last Sunday of every month (except May & December).

"There will always be poor people in the land. Therefore I command you to be open handed toward your brother and toward the poor and needy in your land." (Deuteronomy 15:11)

A 501c3 non-profit community organization

Coffee!
You can sleep when you're dead!

SATISFACTION GUARANTEED
100%

6:30AM - 8:00PM
NORTH SHORE MARKETPLACE
WWW.ROASTMASTER.COM

Oceanside Chapel Service at Turtle Bay Resort



Every Sunday at 9 a.m. in the beautiful oceanside wedding pavilion.

- Non-denominational 45 min. service
- Traditional & Contemporary music
 - 15 minute sermon
- All are welcome! Free validated parking

Hosted by Pastor Kurt Kamikawa
808-358-6066

Pastor Bob Major 808-681-8889
Jamin Hiebert 690-0376

*When church is pau,
enjoy dining at the Kula Grille,
Hang Ten Pool Bar, or Lei Leis.



MAHALO!
From the
North Shore Food Bank
donations of non-perishable
canned
goods are accepted at the
North Shore News Office
637-3138





The North Shore News is published every other Wednesday and mailed free of charge to all North Shore homes and businesses. Extra copies may be obtained at our office.

PRESS RELEASE POLICY: Submit press releases in person or by fax, mail or email to Editor, North Shore News, P.O. Box 1117, Haleiwa, HI 96712. Please type your releases and keep them shorter than 200 words unless they are of an unusual news interest. Releases should be viable news stories and are published on a **space available basis only**, with priority given to those received in our office first. You may attach photos. We are not responsible for the return of any photos. All materials are submitted at owner's risk. We reserve the right to edit and/or refuse all submissions including advertising.

EDITORIAL POLICY: We welcome articles and letters from our readers. Letters to the Editor are published on a space available basis only and preference is given to shortness of length, and quality of content. We prefer to run not more than one letter, per person, per 6 month period. Letters subject to edit.

Views expressed by our contributing writers and advertisers do not necessarily reflect the view of the management and staff of the North Shore News. All rights reserved. Reproduction in whole or part without permission is prohibited. © 2013.

Editor & Classifieds

Linda Seyler

Typography

Downtown General Store

Contributing Writers

Betty Depolito

Naty Hopewell

Choon James

Kalewa

Richard Sterman

City Councilman Ernie Martin

State Representative Lauren Cheape

State Representative Richard Lee Fale



Please recycle this newspaper.

CLASSIFIEDS

SERVICES

SHORE ELECTRICAL SERVICE

New Const-Remodels
638-0049 / Lic#C20777

Dog/Cat Nail Trimming

at your home only \$15.00
Call Julie 637-5395

Lawn Care For You

Mowing, Trimming, Light Hedging
Call Thomas 637-5839

EXPERT ELECTRICIAN

Fans, emergency services, etc.
Jim Richards 371-9369

PARADISE PLUMBING INC.

New Const • Repairs • Remodels
808-368-1473 / Lic. 29856

Handyman Services

Remodeling, Carpentry, Floors,
Concrete, all parts of Construction
Call Bob "The nicest guy in the
business" Ph. 282-2812

Greekz Plumbing LLC

Complete Service & Repair
Camera inspection/drain cleaning
"Got a leak? Call Steve the Greek"
808-372-1820

Haugan Construction LLC

Build & Repair • Big & Small
Let's Talk
Steve 542-9269

DILLON CUSTOM SIGNS

Storefronts & vehicles
Haleiwa 499-9582 20+yrs exp

North Shore Pumping

Septic and Cesspool Service
Clifford 638-0900 • 291-5099

PIANO LESSONS

Guitar, Ukulele, Bass,

Songwriting
637-4635

Next Issue - May 1, 2013

Deadline Date-April 18, 2013

Paumalu Electric Inc.

Now installing Solar PV Systems
Permit, panels, roof installation,
electrical tie in. Free estimates.
Dave Hancock 638-9054
Lic. C18074

HARVEY'S REPAIR, LLC

24 hrs Towing Service
Specializing in opening
locked car doors
Call any time 478-0333

GERMAN CAR SERVICE

Professional-Qualified
Technician
Call Gary
637-6800

SHIATSU • LOMI

Aromatherapy
Milica Barjaktarovic
Lic # MAT8348
351-0848
HumanRemodeling.com

BOW WOW BUNGALOWS

Licensed Boarding Kennel
North Shore, Oahu
Reasonable Rates
Ph. 637-2562
These Dogs Have Fun!

Body by Tracey

Cardio, Strength &
Conditioning at
Sunset Elem. Pavillion
Mon/Wed/Fri @ 8:30am
Tues/Thurs @ 6pm
Contact (808)799-7214
or Traceybjj@gmail.com

North Shore Masonry & Landscape

Rock Wall • Block Wall
• Sea Wall • Flagstone
• All types of Concrete Work
Grading Complete Landscape
• Irrigation
Lic #32476 Call 808-255-6102

BIKRAM YOGA

See our new studio, anti-
microbial, anti-bacterial
carpet and more!
Please call for class schedule
637-5700

Offshore Plumbing, Inc.

Commercial * Residential
Septic * Solar * Design
Mike 630-1407
Steve 371-3451
Lic. #28113
steve@offshoreplumbinginc.com

BOBBY'S BODIES

Tuesday evenings at 5:00 p.m.
• Body Toning
Friday mornings at 9:00 a.m.
• Cardio Pump/Fat Burner
For more info: call Bobby, owner of
BOBBY'S BODIES at 637-4150

Aloha Computer

PC Repair/Virus Removal
Fax/Copy/Internet Access
372-2667 or 237-4558

REAL ESTATE NEEDS?

Call me . . . Dee,
Your NS Realtor
Dee-Ann KML
Kekahuna, RA
808-780-3249

Statewide Hotline for Litter

1-888-592-2522

Callers need to provide:

1. License plate number
2. Make and model of vehicle
3. Date and time and location
4. What was thrown/blown

For Advertising Rates

Call 637-3138

HOW TO CONTACT THE NORTH SHORE NEWS

Letters to the Editor, and other items submitted for publication consideration may be sent to us via:

MAIL: P.O. Box 1117, Haleiwa, HI 96712

E-MAIL: NShoreNews@aol.com • FAX: (808) 637-8862

PHONE: (808) 637-3138

Office Hours: Monday-Friday 10 a.m.-3 p.m.

www.northshorenews.com

CLASSIFIED ADS

NORTH SHORE AUTO DETAILING

Package #1 • \$50.00
Wash, wax, vacuum interior, dress interior, dress tires
Package #2 • \$70.00
Wash, wax, water spot removal, vacuum interior, dress tires
Vans, SUVs, Custom 4 Wheelers,
Glass water spot removal, extra (all packages)
Price may change on the condition of vehicles interior and exterior
We are mobile we come to you
Call Billy 371-0854 or DJ 492-5887

Your Clean Home
Vacation/Residential
Home Cleaning
Affordable • Reliable
• Green Cleaning
For Free Estimate
Call 638-0262 or 782-9941

ANGELS PLUMBING

Repairs
Remodeling
Renovation
638-7878
Lic. #C12004



THE LAWN RANGER

Lawn Maintenance
no yard too hard
no lawn too far gone
We mow betta
258-6439 Dan Fatchett



Business Services Center
Fast & convenient fax, copy, scan, computer/internet, laminate, etc.
Across from Haleiwa post office.
637-4558 or GoNorthShore.org

Marianne Abrigo, Properties

Specializing in -
North Shore
Real Estate

Ask for our list of available properties and/or a free market analysis.

Marianne M. Abrigo
"Realtor since 1974"

Office 637-3511
Fax 637-0777
Email mabrigo222@aol.com

GUTTER KING, LTD.

Rain Gutter Systems
Seamless Aluminum & Copper
Half round & Custom sizes
"senior, military discounts"
638-7246

Golden Rule Lawn Care

Mowing, weed whacking,
hedge trimming, rake up,
light weeding & haul away.
Call Matt 269-5020

J&L Services Haleiwa

Quality Landscape and
Garden Maintenance. Also
Pressure Washing, Hedges
and Plant Installation.
Call 673-1384 for est.

North Shore Weddings & Flowers

Turtle Bay Resort
(Pool Level)
447-6767 • (c) 265-0113
northshoreweddingsandflowers.com

HELP WANTED

BUSSERS/SERVERS
Pizza Bob's in Haleiwa is looking for BUSSERS/SERVERS. Experience preferred. Apply in person at 66-145 Kam. Hwy.

COOKS/KITCHEN HELP
Pizza Bob's in Haleiwa is looking for kitchen personnel. Experience preferred, but will consider training the right people. Apply in person at 66-145 Kam. Hwy.

Part Time Secretary
Must have computer skills and high speed internet access.
Fax resume to 638-7643

Retail Sales Surf & Sea
Hawaii's Ocean Sports Headquarters is always looking for hard working, energetic people to become a part of our sales team. Good pay, bonus, benefits. Ocean sports experience and/or bilingual a plus. Apply in person daily 9am-7pm
62-595 Kam. Hwy., Haleiwa

MISCELLANEOUS

BEACH CLEAN UP

Chun's Reef - 10 a.m.
637-2211
Last Saturday of every month
adoptabeachhawaii.org

Please Report Stranded Sea Turtles

Call 983-5730 • Mon.-Fri., 7am-4pm
288-5685 pager wkends, holidays
587-0077 and after hours
Suspected Law Violations
541-2727 or 800-853-1964
NOAA Fisheries DLNR-DOCARE

Hawaiian Humane Society

(808) 946-2187
Animal Rescues &
Investigations 356-2250
Dog Licensing 356-2227
Donations & Gifts 356-2221
Education 356-2206
Pet Adoptions & Lost & Found
356-2218

Save Sea Turtles Use Reusable Bags

www.b-e-a-c-h.org

Playful kitty needs loving home. Two years old, neutered, shots. Cute!
637-5295

EARTH DAY

Reduce, Reuse & Recycle



The Friends of Waialua Library have their monthly **BOOK SALE** April 20, 9am-2pm at the Waialua Library. 637-8286

Pothole Hotline
768-7777

OFF da ISLAND

Are you leaving Oahu on vacation or business? Do you live on a neighbor island, the mainland or foreign country and subscribe to the North Shore News? Try send us a photo of someone in front of a sign or landmark holding a copy of the NSN. Email your photo along with the person or persons' name, community of residence, telephone number and photo location to: NShoreNews@aol.com. Or, mail to OFF da ISLAND Photo, North Shore News, P.O. Box 1117, Hale'iwa, HI 96712. We cannot return photos so please send us a copy. Photos received become the property of NSN. Preference and priority will be given to emailed photos.

Classified Ad Rates

3 lines (min.) \$18.89
4 lines \$25.13
5 lines \$32.45
1" Box Ad \$41.88

(29 characters in each line)
Include your contact information.
*Ads can be dropped off in mail slot, mailed, or emailed. Pay by check payable to: North Shore News or credit card by phone order.

We reserve the right to refuse any advertisement with a full refund.
North Shore News • P.O. Box 1117
Haleiwa, HI 96712 • (808) 637-3138
NShoreNews@aol.com

Voice of God Ministries

Jesus Loves You
If you need Prayer
Call 808-373-0294

Ho'ola Like Waikiki Health

Center's North Shore Clinic Queen Liliuokalani Church 8:30am - 3:30pm, Tuesday and Thursday

IGREJA EVAN. BRASILEIRA

Domingos 10:00 am
Quartas 7:30 pm
Sextas-Culto de Oraçao 7:30 pm

Voce e o nosso convidado especial

Behind Hale'iwa Post Office
637-5566
Pastor Luiz • 638-2212

Keep it Country To report ILLEGAL VACATION RENTALS

call 768-8159 or 768-8118
You will remain anonymous
Illegal Vacation Rentals are ruining the North Shore
www.savenorthshoreneighborhoods.com



MALAMA MARKET HALEIWA:
OPEN DAILY 7 AM-9 PM
808.637.4520

MALAMA MARKET MAKAILO:
OPEN DAILY 6 AM-10 PM
808.672.9955

Valid Dates:
4/17/13-4/23/12

Local
Papaya

99¢
PER LB.



Campbell's
Spaghetti
Selected Varieties,
14.75-15 oz.

10 FOR \$10



Tombstone Pizza
Selected Varieties,
12"

2/\$9



Hawaiian Isles Water
24/500 ml.

2/\$9



choice Certified
Angus Beef®
Boneless
Chuck Roast
Jumbo Pack,
5 lbs. or More

\$3.49
PER LB.



Lay's Kettle Cooked
Potato Chips
Selected Varieties,
4.5-8.5 oz.

2/\$5



Cupcakes
Assorted Varieties,
12 ct.

\$5.99
EACH



Freshly Made

\$12.99
PER LB.

Ahi Poke
Selected Varieties



SGF
Bath Tissue
12 Regular Rolls

\$5.99



SGF Napkins
400 ct.

2/\$7

Nissin Instant
Cup Noodles

\$5.99

Selected Varieties, 12/2.25 oz.,
Case Sale Only!



Pepsi
Selected Varieties,
2 ltr.

2/\$3



Huli Huli* Chicken
Whole Roaster
*Used with Permission

\$7.99
EACH



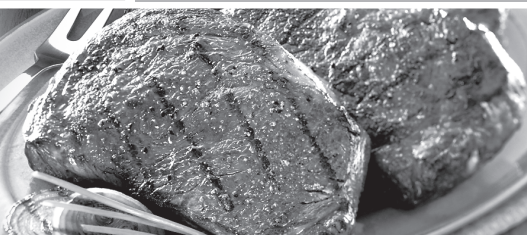
Heineken, Corona,
Stella Artois,
or Pilsner Urquell
12 Pk. Bottles

\$14.88



THURSDAY

INCLUDES:
7-8 oz. Steak
Rice • Tossed Salad • Drink



Grilled Steak
LUNCH
\$6.99

Hawaii Beverage Fee
Hawaii Beverage Fee of 1¢ per can or bottle will be added to purchase price at checkout. An additional Hawaii Deposit fee of 5¢ will be charged for all specially marked beverage containers.

Limit five units (mix/match) per purchase, unless otherwise specified. We reserve the right to limit quantities. No sales to dealers. Prices plus applicable state tax. Hawaii EBT cards welcomed.