

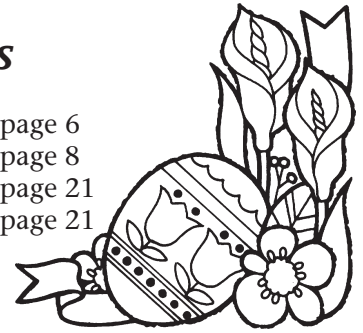


“E Ala Na Moku Kai Liloloa”

Easter Services

North Shore Christian Fellowship
 Haleiwa Evangelical Mission Itn’l
 Once A Month Church
 Turtle Bay Chapel

page 6
 page 8
 page 21
 page 21



NORTH SHORE NEWS March 20, 2013 VOLUME 30, NUMBER 6



Banzai Productions Photo

GMO Protestors “March in March”

On March 2, 2013, hundreds of North Shore and island wide protestors came out in full force marching to protest and voice their concerns against GMO - genetically modified organisms and the chemicals used to grow the crops.

Sponsored by the Hawaii GMO Justice Coalition along with organizers and activists including

da Hui, Makua Rothman, Walter Ritte, and Dustin Barca demonstrated through Hale’iwa town in the first of many statewide parades “March in March” to evict Monsanto corporation from Hawaii with the goal to end GMO chemical warfare against the ‘aina from 25 years of GMO field trials which affects our health, environment and future of small farmers.

Half the land of Hale’iwa and Waialua is GMO corn and Canola that is sprayed with toxic industrial chemicals almost everyday. These areas are located near schools.

Half the land in Hale’iwa and Waialua is owned or leased by Monsanto and Dupont/Pioneer. Google “Hawaii GMO Justice Coalition” for more information.

PRE-SORTED STANDARD U.S. POSTAGE PAID Honolulu, Hawaii Permit No. 1479	Hale’iwa, HI 96712 66-437 Kamehameha Hwy., Suite 210
------------------------------------------------------------------------------------	---------------------------------------------------------

PROUDLY PUBLISHED IN
Hale’iwa, Hawai’i
home of the
Pipeline Womens Pro



OFF da Island in Dallas, Texas

Up Country Diesel Members Spike, Klyne and Dee Kekahuna from Sunset Beach proudly display the North Shore News at the Dallas Museum of Art. Dee was sure to pack a copy of the North Shore News to remind her of the good times on Oahu's beautiful North Shore. For information on the OFF da Island campaign turn to page 23.

Polynesian Treasures

Hawaii's largest selection of Polynesian handicrafts and Hawaiian inspired gifts.

North Shore Marketplace * Haleiwa, Hawaii
Open daily from 10 am * (808) 637-1288

The Hale'iwa Family Dental Center, Ltd.

presents
"Comfort Dentistry"
including—

- Relaxation Glasses
- Television Glasses
- Caring Staff
- Special Medication to help you relax
- Laser Cavity Detection
- New Patients Welcome!

Your teeth are much too important to neglect.

Call: 637-9652
for your reservation

We're conveniently located behind First Hawaiian Bank
in the heart of Hale'iwa.

We've Moved
66-037 Kam. Hwy., Ste. 3
Haleiwa, next to Growing Keiki

Saccoccio & Lopez
ATTORNEYS AT LAW
Serving Haleiwa since 1984

*Bankruptcy
Personal Injury • Criminal Law
Landlord/Tenant
Traffic Offenses • DUI*

Family Law
*Adoption • Custody • Divorce
Paternity • Guardianship
Deeds, and Wills*

637-7611
VISA/MC Accepted

Paul & Nita

TURTLE BAY'S & SURFER, THE BAR'S LINE UP >>



UPCOMING EVENTS

HIGHLIGHTS

Visit us online for complete event listings.

Mar 22. MEN IN GREY SUITS

Men In Grey Suits is Honolulu's newest Surf Rock band playing music of The Ventures, Dick Dale, and many others including many movie and TV theme songs of the 60's that were strongly influenced by surf guitar sounds like Hawaii 5-0 and The Pink Panther Theme.

Surfer, The Bar | Show starts at 9p | \$5 | 21+

Mar 26. KANIKAPILA

Musicians are invited to take the stage and show their stuff. Just bring your instruments and Kanikapila!

Surfer, The Bar | Kicks off at 7p | Non-ticketed Event

Mar 29. N.S. MIDDLE SCHOOL FUNDRAISER

Come have fun and support the North Shore Middle School's first fundraiser - DJ - Live Music - Custom Pyzel Surfboard Raffle - Silent Auction - Slideshow and more!

Tickets can be purchased at NSCharter.org and at the door.

Surfer, The Bar | Doors Open at 6p | \$15

Mar 30. KAPENA

Kapena, considered to be one of Hawaii's premier island bands has 20 Hawaiian Music CD's to their credit. Kapena continues to be an institution that embraces what islanders fell in love with when they first heard their unique sound of their "feel good music".

Surfer, The Bar | Show starts at 9:30p | \$10 | 21+

Apr 12. KIMIE MINOR

Kimie's signature style weaves acoustic soul and reggae with a touch of R&B and funk, into cool sultry melodies. Her free spirit can be heard through her lyrics touching on love, life, and relationships.



OPENING IN APRIL >>

The **North Shore Kula Grille** will feature an innovative menu that features locally sourced cuisine as part of a farm-to-table focus that incorporates the rich agricultural history of the North Shore.

Visit us online for the official opening date announcement at: turtlebayresort.com

See it. Hear it. Feel it.
Like never before.

Journey back to a bigger and better Polynesia. See "Hawaiian Journey," our new cinematic experience—with astounding images and special effects—that will engage your senses. It's an epic tale, passed down from Hawaiian ancestors, about their connection to the 'āina. Plus enjoy new "Go Native" activities and our renovated **Hawai'i Village**.

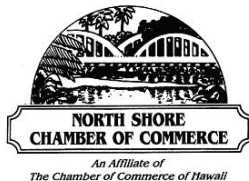
REDISCOVER POLYNESIA

Kama'āina Special
\$15 GENERAL ADMISSION (reg. \$49.95)



Limited time offer. Some restrictions apply. Must have valid Hawaii ID. Closed on Sundays.

PCCKamaaina.com



Save the Date!

The North Shore Chamber of Commerce will hold its Fifth Annual Business Expo on Friday, May 10th presented by Turtle Bay Resort at the Kulima Ballroom from 8 a.m. to 6:30 p.m. The theme of the event is "Prepare Today, Succeed Tomorrow!" with the focus on preparing businesses for upcoming changes and challenges. One such major change will be preparing for and implementing the new Affordable Care Act. What new requirements will there be? What changes to your existing health care plan, if any, will there be? And a million other questions...To start the day off, a panel of experts will address these and many other questions relating to this new legislation and the impact it will have on your business. Put this event on your calendar now and plan on attending. There will be great speakers on a variety of topics from agriculture to taxes, exhibitors with loads of information, networking opportunities all day, and it will end with a great Pau Hana cocktail reception sponsored by Hawaii Human Resources.

We look forward to seeing you there!

Contact: Antya Miller

(808) 637-4558 • info@gonorthshore.org

Upcoming Events at *Waimea Valley*

March 17th

Hawaiian Luau & Kanikapila Music

With the Abrigo `Ohana

Noon to 2:00pm

Luau: \$25.00 for Adults, \$15.00 for Children (4-12)

- PLUS - *Kama'āina and Military Appreciation Day*

Special Valley Admission:

\$5.00 for Adults, \$2.50 for Children (4-12) and
Seniors (age 60+)

Moon Walk 
Friday, March 22nd

Easter Brunch ~ March 31st
Adults: \$38.00

Children: \$19.00 (age 4-12)

Includes Valley Admission



59-864 Kamehameha Hwy.

Hale'iwa, Hawai'i 96712

(808) 638-7766

www.waimeavalley.net

Open daily 9:00am to 5:00pm



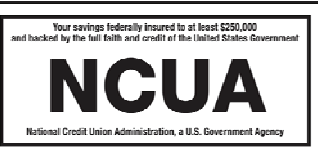
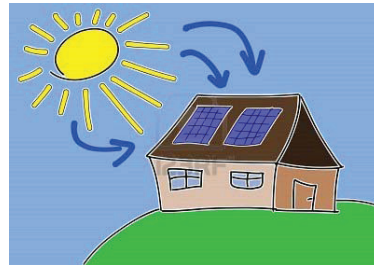
WAIALUA
Federal Credit Union



**Looking to install Solar Photovoltaic?
Consider a Home Equity Loan from Waiialua FCU.
No closing costs and a low interest rate can help you on
your way to lowering your electricity bill.**

Current HELOC Rate is 3.75% APR*

***Annual Percentage Rate based on an index of
3.50% plus the monthly average of the 26 week
Treasury Bill (Auction High) and may be adjusted
annually each March. Please call for more details.**



You are eligible to join if you live or work in Waiialua or Haleiwa.

Phone: 637-5980 Located in the Waiialua Shopping Center

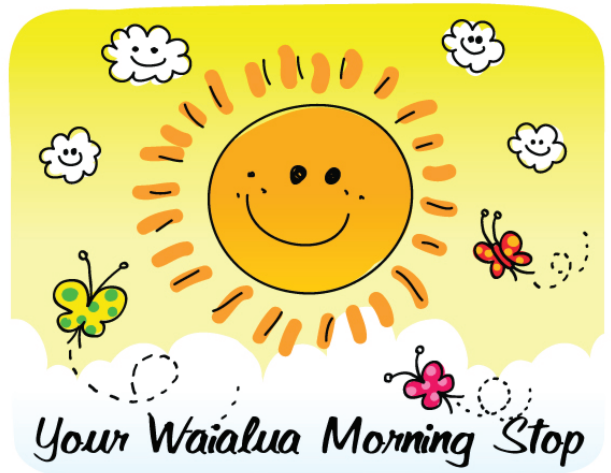


Celtic harpist featured at Waiialua Library

In celebration of National Library Week Waiialua Public Library will be hosting a program featuring renowned Celtic harpist, Patrick Ball. As a young man Patrick fell in love with the music and oral traditions of Ireland, and has since become one of the premier Celtic harp players in the world as well as a gifted spoken word artist. He has recorded nine instrumental and three spoken work albums which have sold over one-half million copies internationally. Patrick has written and currently performs two acclaimed solo musical theater pieces: O'Carolan's Farewell to Music, which brings to the stage the legendary life, the turbulent times, and the glorious music of Ireland's most celebrated and beloved musician, Turlough O'Carolan, and The Fine Beauty of the Island, a musical journey to Ireland's legendary Blasket Islands in search of a deeply haunting tune and the vanished islanders who played it. Patrick Ball will be performing at the Waiialua Public Library on Tuesday April 2 at 10 a.m. Everyone is welcome to attend. Thanks to the Friends of Waiialua Library for making this program possible.

** If a special accommodation or sign language interpreter is needed, please contact the Waiialua Library at least two weeks in advance at 637-8286.*

YOU ARE MY SUNSHINE!



*Open from 5:30AM Daily
Try our premium Mt. Kaala
coffee and get your favorite
freshly-baked pastry!*

Paalaa Kai Bakery

you are invited to...

North Shore Christian Fellowship's 36th Annual Easter Services

This year we're moving to Haleiwa Ali'i Beach Park!



SONrise Service

Easter Sunday Morning
MARCH 31, 2013, 6:30AM

Haleiwa Ali'i Beach Park

For the Keiki, Illusionist Mike Villoria
(look for the Keiki Tent)

Followed by FREE Continental Breakfast
FREE shuttle service from Kaiaka Park

GOOD FRIDAY SERVICE

FRIDAY NIGHT
MARCH 29, 2013
7:00PM

Testimonies,
Worship & Communion

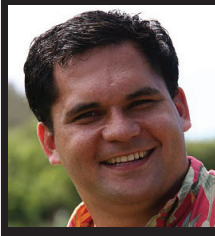
WORSHIP HIM

SATURDAY NIGHT
MARCH 30, 2013
7:00PM

WORSHIP & ENCOURAGEMENT
Led by Tyler Nakamura & Band

for more info phone 808•637•6225
or email: nscf75@gmail.com





**State Representative
Richard Lee Fale
Serving You in District 47**

FIRST CROSS-OVER AT THE LEGISLATURE

On Tuesday March 5, the State House of Representatives conducted business from 9:00 a.m. until about 10:30 p.m. The House considered over 200 bills, before they "crossed-over" to the Senate for consideration. At this half-way point of this year's legislature, I would like to talk to you about a few important developments taking place.

One of the most significant changes this biennium is the coalition between the current House leadership with Speaker Souki and the minority caucus. The seven members of the House minority caucus voted in favor of Representative Joe Souki to become Speaker of the House along with a significant number of majority members. As a result of this coalition, Representative Joe Souki became Speaker of the House for the current biennium (2013-2014).

The minority caucus gained vice chair positions on the Committee on Economic Development and Business, Committee on Energy and Environmental Protection and a co-chair position on the Finance Committee. The result of these changes is that your House minority members now have more input into the decision making process – as members of the new coalition.

This is good for everyone and it is especially good for the public. Neither the majority nor the minority has a corner on good ideas. Good ideas can come from all House members and the advancement of those ideas can benefit our North Shore communities.

One particular example of a good idea is House Bill 694, which passed and is headed for the Senate. I supported this measure along with members of the minority and majority. This bill is a good example of bipartisan support and getting things done at the State House.

HB 694 will repeal the increase in tax that resulted from Act 60 (in 1990) by changing the sunset date from December 31, 2015 to December 31, 2014. This means tax rates will be reduced one year sooner than current statute. The Tax Foundation of Hawaii pointed out that when Act 60 was passed it placed Hawaii in the position of having "the highest top personal income tax rate in the United States. By increasing the top marginal tax rate from 8.25 to 11 percent." The Tax Foundation of Hawaii also pointed out that at the time that ACT 60 was passed the bill negatively impacted "almost 37,000 persons, of which about 27,000 are sole proprietors, partnerships, or subchapter S corporations whose owners report their business income through personal income tax returns."

We need tax relief like HB 694 for the people of Hawaii. With bipartisan work on the bill, we were able to ensure that tax relief reached our working and middle class families. When tax relief occurs more dollars are spent in the economy. Those dollars are then re-spent in what economists call a multiplier effect. This benefits everyone. We need a more robust economy and tax relief for all of our working families and struggling seniors. If we want Hawaii to be a place where new businesses are started and people will come to invest then we need to have a tax structure that is more business friendly.

If you would like to contact us, please call 586-6380. You can also email us at repfale@capitol.hawaii.gov or visit us at the Hawaii State Capitol, 415 South Beretania St., Room 319.

OahuMPO is Listening!

OahuMPO would like to hear about your transportation headaches and your ideas for fixing them. Please take a few minutes and complete this brief survey on our homepage, <http://www.oahumpo.org/> and accessing the survey link here.

After you have shared your concerns with us, PLEASE share this information with your friends, family, co-workers, team mates, teachers, students, coaches, bridge partners, babysitter, employees, drinking buddies, club members, etc. The survey will remain open until April 14, 2013. Mahalo!

MARCH'S HOT CROSS BUN

Super Saver Special

Valid March 20~26th, 2013



**CLIP THIS COUPON
BUY 2 BUNS &
GET 1 FREE!**

*We know that you'll
love our fresh buns!*
**BUY 6 BUNS
& GET 3 FREE!**

www.pkbsweets.com

Waialua's Hometown Bakery

PAALAA KAI BAKERY

Open 5:30AM ~ 7:00PM

66-945 Kaukonahua Rd

Phone Orders: (808) 637-9795



Representative
Lauren Cheape
Serving You in District 45

Aloha,

We've hit a very crucial point in this year's Legislative session: the First Crossover. During First Crossover, all Bills that are alive in the House move to the Senate, and all Bills alive in the Senate get passed to the House for consideration. Over the next few weeks the House will be hearing the passed Bills in Committee hearings, and these hearings will help to determine which Bills move on and which ones won't. Now is as important a time as ever to submit testimony on these measures and make sure your voice is heard. The easiest way to submit testimony is online at the Capitol's webpage, www.Capitol.Hawaii.gov.

Things happen at a very rapid pace at the Capitol, and it is very difficult to keep the people up to speed. For example, as of this writing, I have not yet been informed as to which Bills will come before me for consideration, yet by the time this goes to print, I will have already heard and voted on dozens of Bills. This presents a challenge, as I rely on feedback from you to inform my decisions. This is why I am placing great importance on and have expended considerable effort to compile a list of email addresses of concerned residents in order to be able to communicate in a timelier manner. Through email notifications I can inform you when Bills that will have significant impacts on us come up before the Bills get heard, rather than after the fact. If you would like to be added to my email list, simply send me an email at RepCheape@Capitol.Hawaii.gov expressing your desire to be added, and include any specific topics of concern or interest. You can always remove yourself from the list in the same manner at any time.

In other news, the Capitol will be hosting the 5th Annual Art at the Capitol event as part of the State Foundation on Culture and the Arts "Art in Public Places" program on April 5th, 2013 from 5:00 p.m. until 7:00 p.m. My office will be showcasing works of art from my district, featuring local artists such as Mark Howard and Clark Little. Mark Howard is a Waialua artist who specializes in acrylics, oils, lacquers, watercolors, pastels, and inks. Clark Little is a world-renown photographer known for his stunning, one-of-a-kind photographs of North Shore waves, capturing them from the inside out. They are truly a sight to behold.

For more information on the 5th Annual Art at the Capitol, or on anything that takes place at the Capitol, please take the time to visit the Public Ac-

cess Room, located in Room 401 or online at Hawaii.gov/lrb/par. In addition to getting your questions answered, the Public Access Room can help you identify and track Bills, submit testimony, and much more.

I would like to take this opportunity to thank all the members of our community that have already submitted testimony or attended hearings during this session. Your participation is vital to the Legislative process, so please keep the phone calls, emails, and letters coming.

Mahalo nui loa,

Representative Lauren Kealohilani Cheape

BREAKFAST
7 AM to 11 AM DAILY



Haleiwa Town Center - 637-5095

PLUS \$2.00 Off with this Coupon

Some Restrictions Apply. See Restaurant for Details.
 When Ordering Regular Priced Items. Good Anytime. One Coupon Per Person.
 Can Not Be Combined with Other Discounts. Expires 05/31/2013.

CELEBRATE
"Easter"

March 31, 2013

7:30 am

@

Waialua Community Association



**COME AND
 JOIN US
 AS WE LIFT UP
 OUR RESURRECTED
 LORD**

**Haleiwa Evangelical Mission
 Int'l
 808 637-4567**

Editor's Choice

"What's Up?"

(Author Unknown)

There is a two-letter word that perhaps has more meanings than any other two-letter word, and that is 'UP.'

It's easy to understand UP, meaning toward the sky or at the top of the list, but when we awaken in the morning, why do we wake UP?

At a meeting, why does a topic come UP?

Why do we speak UP and why are the officers UP for election and why is it UP to the secretary to write UP a report?

We call UP our friends.

And we use it to brighten UP a room, polish UP the silver; we warm UP the leftovers and clean UP the kitchen.

We lock UP the house and some guys fix UP the old car.

At other times the little word has real special meaning.

People stir UP trouble, line UP for tickets, work UP an appetite, and think UP excuses.

To be dressed is one thing, but to be dressed UP is special.

A drain must be opened UP because it is stopped UP.

We open UP a store in the morning but we close it UP at night.

We seem to be pretty mixed UP about UP!

To be knowledgeable about the proper uses of UP, look the word UP in the dictionary.

In a desk-sized dictionary, it takes UP almost 1/4th of the page and can add UP to about thirty definitions.

If you are UP to it, you might try building UP a list of the many ways UP is used.

It will take UP a lot of your time, but if you don't give UP, you may wind UP with a hundred or more.

When it threatens to rain, we say it is clouding UP.

When the sun comes out we say it is clearing UP....

When it rains, it wets the earth and often messes things UP.

When it doesn't rain for awhile, things dry UP.

One could go on and on, but I'll wrap it UP, for now my time is UP, so...it is time to shut UP!



KUA AINA

The Best!

· IN HALEIWA ·
637-6067

· IN HONOLULU ·
591-9133
AT WARD CENTRE

HALEIWA · TOKYO · HONOLULU · LONDON

AUCTION: ONE WITHOUT RESERVE

101-AC RANCH, TWO PARCELS OVERLOOKING
OAHU'S FAMOUS '7-MILE MIRACLE'



5 DAYS UNTIL AUCTION.

MAR 25, 2013

WELCOME TO PAUMALU RANCH,
THE LARGEST SINGULAR LAND OFFERING
IN THE HEART OF THE NORTH SHORE.



Paumalu Ranch is your chance to own a hidden gem on the North Shore — two 45+ acre parcels on a bluff overlooking Sunset Beach. This exclusive sanctuary boasts spectacular scenery; the finest views; wildlife for the hunting enthusiast; gently-rolling pastures for equestrian, farming and ranching; close proximity to Turtle Bay Resort and its two championship golf courses, restaurants and spa; and some of the best surfing on the planet.

58-378 KAMEHAMEHA HWY, HALEIWA, HAWAII
OPEN DAILY 1-4 & BY APPT | 2.5% CO-BROKE

PAUMALURANCHAUCTION.COM | 888.256.2806

CONCERGE

HAWAII LIFE REAL ESTATE BROKERS

Listed by Neal Norman R(B), (808) 651-1777 and Julia Napua Fetzter R(A), (808) 286-7550 of Hawaii Life Real Estate Brokers, (800) 667-5028

This property is listed for sale by Hawaii Life Real Estate Brokers, (800) 667-5028, Neal Norman R(B) (Lic#1267) and Julia Napua Fetzter R(A) (Lic# 62214) - 4614 Kilauea Ave., Suite 206, Honolulu, HI 96816. Concierge Auctions, LLC has an Auctioneer's License issued by the County of Hawaii, is the provider of auction marketing services, is not a brokerage, and is not directly involved in selling real property. The services referred to herein are not available to residents of any state where prohibited by applicable state law. Concierge Auctions, LLC, its agents and affiliates, broker partners, Auctioneer, and the Sellers do not warrant or guarantee the accuracy or completeness of any information and shall have no liability for errors or omissions or inaccuracies under any circumstances in this or any other property listings or advertising, promotional or publicity statements and materials. This is not meant as a solicitation for listings. Brokers are fully protected and encouraged to participate. See Auction Terms & Conditions for full details.

***Easter Brunch
at
Waimea Valley
Sunday, March 31st***

One sitting, from 10:00am-2:00pm

Adults: \$38.00

Children (ages 4-12): \$19.00

Price includes Valley Admission

Reservations: 638-7766



59-864 Kamehameha Hwy.
Hale`iwa, Hawai`i 96712

(808) 638-7766
www.waimeavalley.net



Dear Editor:

On Tuesday morning SB 894 (relating to acquisition of the undeveloped lands at Turtle Bay Resort) was recommitted, effectively putting the bill on hold for this year's legislative session. The bill was introduced by Senator Clayton Hee to provide the State of Hawaii a funding mechanism with which to help preserve the rural property. According to a letter read on the Senate floor, the bill was put on hold because of a promise made by Replay Resort's Drew Stotesbury (Turtle Bay Resort owner's representative) to "voluntarily negotiate in good faith a solution that provides the State the ability to keep a portion of the undeveloped lands at the Turtle Bay Resort for public benefit."

The Defend Oahu Coalition, our supporters, and the vast majority of Oahu residents feel that SB 894 is a viable solution to the dilemma surrounding the unsustainable proposed expansion of Turtle Bay. Unfortunately, the bill will not continue through the House of Representatives, where it could have gained the momentum necessary to effectuate the State involvement in a public-private conservation solution. We are grateful to Senator Clayton Hee for promoting a legislative solution to the controversial expansion project but remain wary of more promises by this developer to seriously consider a conservation alternative to their current plans for massive development.

DOC will continue to hold the Developer accountable for the numerous promises made to our community over the last 30 years. Our organization formally broke off discussions with Replay Resorts in January due to a lack of serious consideration of a conservation alternative in their recent court-ordered Supplemental Environmental Impact Statement. We now await a more serious dialogue to begin.

The voices of our supporters have made a difference. But our actions will not stop here. The North Shore Community Land Trust has recently initiated a "conservation visioning" process which seeks to continue the work begun by Governor Lingle's Turtle Bay Advisory Working Group and Defend Oahu Coalition fully supports these efforts. We sincerely hope that the banks and investors who control the resort will embrace a community-informed action plan to save these precious coastal resources for generations to come.

Tim Vandever
Defend Oahu Coalition

Dear Editor & Readers:

Hello! My name is Matt P. I am a fifth grade student at Harlan Intermediate School, in Harlan, Iowa. My class is studying geography and history of the United States. I chose your state Hawaii, because it is my favorite state. I would appreciate it if you send me postcards, a souvenir, and information about your state.

My teacher, Mrs. Newlin, would like a car license plate for a school project, if possible. I appreciate your time. Thank you!

Sincerely, Matt P.
Mrs. Newlin's S.S. Class
1401 19th St.
Harlan, IA 51537

No Show, No Grumble!

Dear Editor:

Many of us that are community leaders were dismayed at the lackluster turnout to the Oahu Metropolitan Planning Organization's (OMPO) listening session recently held at Hale'iwa Elementary School's cafeteria. There were an estimated 30 people that attended out of 20,000 residents. We hear again and again that Laniakea is a key problem in our community, backing up traffic to the bypass almost every weekend and definitely on big wave days. This bottleneck holds the residents that live North of Laniakea hostage in their homes on weekends and at other times as well. Despite funding to address this issue, the Department of Transportation and its consultant have dragged their feet getting the Laniakea Task Force going and making any meaningful progress since it was started. Imagine if a couple of hundred people showed up! OMPO, the DOT and our elected officials would sit up and take notice!

If the public does not show up in force, the powers that be will not pay attention to us and will focus their time and resources on the communities. The announcement about this public listening session was announced in the North Shore News and sent out to memberships of several organizations including Defend Oahu Coalition, Keep the North Shore Country, and the North Shore Chamber of Commerce. Those organizations announced the meeting at least twice to their memberships. I understand that we all have very busy lives between our jobs, commuting, family, and homes, but it is important for you to show up. It will make a big difference. Otherwise, "No Show, No Grumble!"

In this case, you have a second chance. OMPO would like to hear about your transportation headaches and your ideas for fixing them. Please take a few minutes and complete this brief survey by going to their homepage, and accessing the survey link there. The survey will remain open until April 14, 2013.

Mahalo,
Antya Miller, member
North Shore Neighborhood Board

No job too big or small.
Located at the Waialua Sugar Mill.



**fab
ab**
808

**CERTIFIED WELDING
FABRICATION & REPAIRS
OF ALL METALS**


628.8719

**DRAFTPLANS
HAWAII**

-Over 10,000 floor plans & blueprints available for purchase online. Gather ideas for your own design.
-**Drafting** Service available for new home designs, additions, renovations, decks, fence, rock walls, etc.
-**Free** property specifications & title search info.

www.draftplans.com

Call for free estimates:
265-0035

Fresh pizzas, subs, pasta & salad

Jerry's Pizza
637-8866
Open 7 days a week
7 a.m. – 9 p.m.

**Delivery Service now available for
Haleiwa Town & Waialua after 5 p.m.**

Located in beautiful downtown Waialua
at the Waialua Shopping Center.
jerryspizzamill@gmail.com

North Shore Career Fair Information

Liliuokalani Protestant Church
66-090 Kamehameha Highway
Haleiwa, Hawaii 96712
May 4, 2013 • 11 a.m. to 4 p.m.

The North Shore Career Fair was created to prepare our communities Graduating Seniors of 2013, attract those that are unemployed or laid off, in the process of changing careers, or entering the working field. Our goal is to provide . . .

- Opportunity to create and present resumes
- Have access to hiring employers
- Experience one on one interviews
- Speak with recruiters (National Guard, Navy, College...)

The location to host the fair is familiar to the North Shore and easy to locate or access by car, walking, or city bus.

- Public participation/Public service

Please keep in mind we also want to address job loss and are about to undergo a major change in funding. Budget cuts may result in more job loss in our communities.

If you would like to share ideas of how to make this Career Fair successful, or participate as an employer seeking potential employees, or would like to promote volunteer opportunities call Denice Kuehu 808-368-6442 or email: northshorecareerfair@gmail.com.

**North Shore Chamber of Commerce
Membership Meeting
March 27, 8:00 am
Haleiwa Joe's**

North Shore Recycling Service
*Curbside recycling pickup services
for homes and businesses*

- Two pickups per month at only \$24 per month (2 curbside recycling bins included)
- 100% of the recyclable donated to non-profit organization

Visit us at www.ocr2000.com
To sign up call us at 262-2724 or
email: recycle@ocr2000.com

BALI MOON

HAWAII

Annual Spring Warehouse

66-935 KAUKONAHUA, WAIALUA, OLD OILS OF ALOHA BUILDING, NEXT TO PAA'LA KAI BAKERY

Clearance

LARGE INVENTORY OF TABLES, CHAIRS AND LOTS

Easter Weekend

MARCH 30TH-31ST, 2013

OF BOAT WOOD, TEAK AND MAHOGANY FURNITURE.



Come by and visit us on the NorthShore; we are here to listen and help you to furnish your home, create custom furniture according to your vision, or simply assist you in finding the perfect souvenir for the loved ones at home.



VISIT US ONLINE: WWW.BALIMOONHAWAII.COM

66-145 Kam. Highway. Haleiwa. balimoon1@aol.com. 1.800.663.0378 or 808.637.0012

Waiialua Wrestler Wins Gold

Waiialua High School wrestler Treylan Kobayashi has been training for his dream since he was young child. His senior year would prove to be the peak of his wrestling career.

Not only has he reached his goal, he is the first in Waiialua High School to win 1st place in 24 years since Joe Baregi (1989).

"It's been a lifelong dream to place my name on the wall of finishers. It motivated me and gave me the drive and determination to work to get to states."

The sport of wrestling was introduced to him at the young age of 8 by his older brothers Wes and Toran who also wrestled for Waiialua Wrestling is a family affair for the family older brother Wes is now the wrestling coach and brother Toran assists. He recognizes long time coach Jr. Dicion for training his brothers as well as himself through the years and the many other coaches who have impacted him along the way.

The sport of wrestling has allowed him many experiences from competing at Nationals in Fargo to training with wrestlers around the state. His training is set to high gear once the season comes to a head and that is when he starts to train not only with his school, but doubles up on practices with his club Grapplers HI. Not to mention the strict diet and weight control that this sport demands.

Waiialua is a small close knit community school but their wrestlers with their immense drive bring forth and impressive showing at the HHSAA Wrestling Championships. This year Waiialua High School was represented by Amber Tantog (2nd place), Rianne Murakami Samala (5th place), Kalen Hong and Treylan Kobayashi (1st place).

In the future Treylan would like to stay involved with wrestling and help train more wrestlers from Waiialua and keep the sport growing strong in his community.



Coaches: Jr. Dicion, Wes Kobayashi, Treylan Kobayashi, Toran Kobayashi. Scoringlive.com photo



Planning Commission hears revised Ko'olau Loa Sustainable Communities Plan

The Honolulu Planning Commission heard a revised Ko'olau Loa Sustainable Communities Plan released by the City's Department of Planning & Permitting yesterday. The amended plan includes some proposals submitted by Envision La'ie that have broad La'ie and Ko'olau Loa community support.

Close to 150 people turned out at the public hearing, held at Windward Community College in Kane'ohe, to testify and support the plan amendment. The large majority of those attending and testifying at the hearing were residents in support of the revision.

"Achieving harmony between the needs of the present and the aspirations of future generations is what the KSCP is all about," said La'ie Community Association president Pane Meatoga, Jr. "Yesterday's public hearing is an affirmation of the process and the determination of our community to see it through for the good of all concerned."

The City's revised Ko'olau Loa Sustainable Communities Plan (KSCP) reflects the combined efforts of residents, businesses and government to achieve a bal-

ance of economic, social and environmental goals.

The KSCP allows for slow projected population growth, along with the limited expansion of much-needed housing into Malaekahana to support the needs of local residents and employers, such as Brigham Young University-Hawaii (BYU-H) and the Polynesian Cultural Center (PCC).

"As a community, we look forward to continuing collaboration between business and residents to grow our region in a way that helps local residents stay, have jobs, affordable housing and prosperity," said Eric Beaver, Hawaii Reserves, Inc. president.

The Planning Commission will be continuing public discussion of this agenda item on Wednesday, March 20 at 1:30 p.m. at the Mission Auditorium next to Honolulu Hale.

Envision La'ie represents a diverse group of residents and stakeholders of Ko'olau Loa working together to study La'ie and plan for its future possibilities, a future that protects quality of life and emphasizes the values of the people who live in the Ko'olau Loa region. For more information, visit: www.envisionlaie.com.



BANZAI NORTH SHORE WIRELESS

The Red Bull Jaws Paddle event at Pe'ahi went undone for the first try. The event time period went from December 7 to March without the necessary kind of waves the organizers wanted. It was supposed to be a one day paddle in with a surf height range of 30-50 feet which lets say is more like 25-30 feet Hawaiian. The paddlers have been pushing themselves over bigger and bigger wave ledges and are making history doing it. It has been an average season with some quick big days but not much giant stuff like some years. Better luck next time.

It is a busy time for Women surfers with the Surf n Sea Pipeline Womens Pro presented by San Lorenzo Bikinis and the International bodyboarding tour that arrived, the IBA. Go Pro sponsored the event just in time. Ben Player from Australia took out Hawaiian Jeff Hubbard to finally win the Pipe event. Player has competed for over 20 years there and finally won one! Congrats. In the Womens division it was Isabela Sousa winning. Sousa was dominant in the final snagging a tube ride at the top of the heat in difficult surf. Japans Minami Hatakeyama did a big barrel roll to clinch her 2nd place finish.

Word has it there will soon be a local Hawaiian bodyboarding tour sponsored by Science Hawaii Bodyboards. Science has 8 time World Champ Mike Stewart at the helm. Karla Costa Taylor who took third in the event has her own bodyboard line with Science Hawaii. Look for it, there is a perfect model for the keike also. The bodyboard industry is bigger than you think. Pretty much everyone learns to enjoy the

water on a bodyboard first. Watch out for the flimsy ones that last one go out. That has been bugging me how about you? I see them thrown in the trash cans everywhere on the beaches. They sometimes are pretty, but kind of a waste!

As of this writing day the Roxy in Australia is complete with Hawaiian Carissa Moore kicking off things with a 3 place finish. Australian Tyler Write won the Roxy Pro, it has been a while for her. A stand



Jeff Hubbard checking his landing spot!

out at the event was Alana Blanchard who made the semi then was beaten by Stephanie Gilmore. The guys finish up after this post but Kell Slater was back in action. John John Florence from the North Shore hurt himself and did not compete. Have to see how things pan out for the mens side.

There are lots of great organic products around lately and who cold have missed the parade in Haleiwa for anti GMO.

Genetically Modified Foods people argue should be labeled. We seem to put the ingredients on labels for everything else why not GMO foods. Ok enough said, google it! Take care until next time!

Yell at me banzaib@hawaii.rr.com

Waialua - The Saga of the North Shore

Chapter 29 - Kaohelani

By Kalewa

Keoua's first son was named Kalokuokamaile. The second was named Kamehameha. The firstborn was deemed "Ka Keiki o Kona wa Heuole," the offspring of his beardless youth. Kalokuokamaile's mother was the High Chiefess Kahikikalaolani, ruler of Hana, Kipahulu and Kaupo.

Keoua returned to the Big Island leaving his three year old son to be raised in his mother's court. As the years passed Kalokuokamaile grew to become an athletic youth with a pleasant and mild nature. When his mother died, he became a very popular ruler of East Maui.

Word came to court of the beautiful young princess, Kalaiokalani. The only daughter of the chiefly family ruling the neighboring Kahikinui and Honu-aula Districts had come of age. As the customs of the time dictated, the Hana chief paid visits to southern court at night. He was well received by the parents and wedding arrangements were soon made. Once the feasting and dancing had concluded, it was time for the newlyweds to return to Hana. Kalaiokalani was immensely popular with her people. The procession of her followers was so great as to be at first mistaken to be an invasion coming up from the south.

The royal couple settled in to court at Hana and had a daughter named Kaohelani. Her father died just as she was reaching womanhood. Kalouokamaile had been so well regarded by his people that he was buried on the summit of the sacred hill at Kauwiki, rather than having his bones hidden away in some secret cave.

At that time, the most eastern districts of Maui were again being ruled from the Big Island while the rest of the island was under Kahekili or Kalanikupule, depending on the whim of the former. Seeing a need for a strong male ruling chief to oversee his interests, Kamehameha asked Kalaeokalani to allow him to bring her daughter Kaohelani to his court on Hawai'i, until she became able to rule her own lands. Kamehameha's younger brother Keali'imaika'i was placed over the east Maui districts. Once the entire Island of Maui was conquered the lands went to Kamehameha's generals, rather than the traditional owners. Kaohelani stayed on Hawai'i, rather than returning to her birthright.

Kamehameha was having trouble subduing the people of Waimea. Their High Chief Hinai had survived any number of battles on opposition to Kamehameha, including the slaughter at Kawaihae. Kamehameha tried to resolve the problem by offering the hand of Kaohelani to Hinai's eldest son Nuhi. Nuhi had been one of the pair of warriors who had nearly killed Ke'eaumoku during the first battle of Kamehameha's conquest. (Chapter 25)

The wedding took place, but Kamehameha was disappointed in the results. Princess Kaohelani



embraced to her new home and people's rebellious spirit and did not readily follow Kamehameha's every command. Nonetheless, Nuhi eventually came around and joined ranks with the man who would become King.

Nuhi and Kaohelani had a daughter named Kekaikuihala and later, during a time when the couple was in Hilo (1797 by most accounts, but possibly earlier), a son was born.

His name was La'anui and that is why I am telling you this.



**BANZAI
PRODUCTIONS**

**Video - Media
Need Web Video
Ask About Our
Special Rates**

808-781-2535



Free Tax Aid offered for needy area residents

Free tax preparation assistance is available now through early April, especially for low- to moderate-income workers.

The Family and Individual Self-Sufficiency Program has trained volunteers at the following site by appointment:

Waialua Federal Credit Union
67-292 Goodale Ave. #A-2

8:30 a.m. to 3 p.m., Monday-Friday through April 5
Call 753-8498

The statewide service began in 2005 as a pilot program of Aloha United Way and is designed to alert taxpayers to valuable tax credits, save them money, encourage financial literacy and recruit and train others to work at the sites. For more details, visit hawaiiataxhelp.org.



**Professional
Tattoo
&
Body Piercing
Studio**

Located in the
Waialua Shopping Center
Near the
Old Sugar Mill

808-312-3444

Custom Designs · Re-Do's · Cover-Up's · Free Consultation
oahutattooink.com

**Mokule'ia
Writer's Retreat
April 7-12, 2013**

Calling all writers, novelists,
poets, journalists,
and passionate scribblers!

COME JOIN US:
Bestselling Author - Laura Fraser
UH Professor - Steven Goldsberry
NS Native and Author - Constance Hale
Hawaiian Musician - Aaron Mahi
Poet and Composer - Pukea Nogelmeier

For information call: 637-6241 or
Email: shanee@campmokuleia.com

Waialua High & Intermediate School
PROJECT GRAD 2013 FUNDRAISER
Support WHIS PG 2013 by renting your tuxedo from
Celebrity Tuxedos. \$10 from every tuxedo rented for
WHIS Jr./Sr Prom will be given to WHIS PG 2013


PROUD SUPPORTER OF PROJECT GRADUATION
FROM STUDENT SPECIAL — VALID FOR PROM ATTENDEES ONLY



from prices start at
\$39⁵⁰
WHILE SUPPLIES LAST

**CELEBRITY
tuxedos**
BLENDING FORMAL FLAIR WITH ISLAND HEART

IN SEARS Ala Moana Center | Honolulu 808-947-0397
Pearlridge Center | Aiea 808-487-4341 Windward Mill | Kaneohe 808-247-8390
www.facebook.com/CelebrityTuxedos
WWW.CELEBRITYTUXEDOS.COM



**Join the most EMPOWERING Fitness
Movement on the North Shore!**

EVERY ~ Mon/Wed/Fri
6-6:45am & 8:15-9am
Group Classes are held at the WCA
All Classes are KID Friendly!!!

MMA X OUT Kickin Pink
A Female ONLY 6-Week Kickboxing Program
~ Learn to "Fight to get FIT" ~
ONLY \$180
Next session is 04/08-05/16

808 638 1410
MMA X OUTOahu@Hotmail.com
www.MMA X OUTOahu.com

Pupukea Marine Life Conservation District

In 1983, the State of Hawaii created the Pupukea Marine Life Conservation District to protect the marine life at Pupukea (Sharks Cove) and Kalua o Maua (Three Tables). In 2002, the MLCDD was expanded to include Waimea Bay, protecting over 100 acres. Less than one percent of Hawaii's coastline is set aside in marine life conservation districts (MLCD).

The goal of protecting this spectacular cultural and ecological treasure of the North Shore from unregulated use and taking of marine life is to restore its historical abundance and to replenish the fish and other marine life in the adjacent areas for all to enjoy.

Malama Pupukea-Waimea

Malama Pupukea-Waimea is a volunteer-based North Shore non-profit, formed in 2005 as part of the State's Makai Watch community stewardship program. Its programs educate residents of Hawaii and visitors to the Pupukea Marine Life Conservation District about the importance of this special area's marine life and protected status.

Malama Pupukea-Waimea works hand-in-hand with the community and government partners to "kokua" or take care of the fish, sea turtles, coral reefs, and other marine life that call this area their home. Solely supported by private donors and grand funding, the organization trains and actively engages community members through a weekly outreach tent at the beach, educational programs for youth, biological assessments of the fish and reefs, monitoring of human usage, and prevention and reporting of illegal activities.

Why protect Pupukea, Three Tables, and Waimea Bay?

- to provide a refuge for marine life to reproduce and grow
- to restore healthy fish, coral reefs, and other marine life
- to rebuild fish stocks in adjacent areas through "spillover"
- to protect cultural, social, economic, and recreational resources
- to prevent damage from illegal fishing and excessive human activities
- to ensure a healthy and clean oceans for our community, from keiki to kupuna



What is the problem?

- the state has insufficient resources to monitor the Marine Life Conservation District.
- many people are unaware the marine life in this area is protected.
- uninformed users can carelessly damage the reefs.
- illegal fishing undermines years of conservation efforts.
- fish feeding has increased altering natural fish behavior.
- trash in the water and on the shoreline threatens people, fish, and turtles.
- careless activities on the land negatively impact the ocean.

**How Can You Help
make a generous charitable
contribution to Malama Pupukea-Waimea**

www.pupukeawaimea.org

Story Time @ Waialua Library

Please join us at the Waialua Public Library on Saturday March 30, 2013 at 10 a.m. for a special Easter story time and Easter egg hunt. Story time will feature stories filled with Easter themes told by Auntie Pam and Elfi, and after story time the children can participate in an Easter egg hunt. If any special accommodation or sign language interpreter is needed, please contact the library at least two weeks in advance at 637-8286.

Free child car and booster seat inspections at Waipio Shopping Center on March 23

Inspections by Appointment Only

WHO: Sponosred by Kaiser Permanente Hawaii, Keiki Injury Prevention Coalition (KIPC) and Kapiolani Medical Center for Women and Children

WHAT: Child Car Seat and Booster Seat Inspections
 Traffic crashes are the leading cause of death for children over one year of age. Child passenger restraints can reduce deaths by as much as 71 percent for infants and 54 percent for toddlers, but up to 80 percent are not installed or used correctly. Is your child's car or booster seat installed properly? Kaiser Permanente wants to be sure your child is safe. Child Passenger Safety Technicians certified by the National Highway Traffic Safety Administration will be on-site checking all child car and booster seats for FREE, by appointment only. Preregistration is required, please call 432-2260 to attend. Note: Install your child's car seat before your appointment and bring your car manual and car seat instructions.

COST: Free (available to Kaiser Permanente members and non-members by appointment only)

WHEN: Saturday, March 23, 2013
 10:00 a.m. - 1:00 p.m.

WHERE: Waipio Shopping Center
 94-1040 Waipio Uka Street
 Waipahu, HI 96797

REGISTER: Pre-registration is required, please call 432-2260 to attend.

North Shore News



2013 Schedule

PUBLICATION DATE	EDITION	DEADLINE DATE
April 3	#7	March 22
April 17	#8	April 4
May 1	#9	April 18
May 15	#10	May 2
May 29	#11	May 16
June 12	#12	May 30
June 26	#13	June 13
July 10	#14	June 27
July 24	#15	July 11
August 7	#16	July 25
August 21	#17	August 8
September 4	#18	August 22
September 18	#19	September 5
October 2	#20	September 19
October 16	#21	October 3
October 30	#22	October 17
November 13	#23	October 31
November 27	#24	November 14
December 11	#25	November 29

Direct-Mailed to Every Home
 MOKULEIA • WAIALUA • HALE'IWA • KAHUKU • LAIE
 Every Other Wednesday
 12,000 copies

"The North Shore's most popular publication" since 1970
 (808) 637-3138 • NShoreNews@aol.com

Waialua GeneralStore

*Across Waialua Post Office
 Next to Laundromat*

Onolicious
 Steak Plate Special
 with FREE Soda
 Wednesdays \$7.95

\$1.00 off with this ad

Most Delicious Homemade Filipino
 Food & Deserts on the North Shore
EVERY DAY

Business Hours: 10 a.m. – 7 p.m.
 7 Days a Week

Phone: (808) 637-3131

BULLETIN BOARD



Featuring the largest selection of certified organic produce on the North Shore. No panic...ours is organic. Open 7 days. Mon.-Sat. 9am-6pm. Sun. 9am-5pm

66-445 Kam. Hwy
Haleiwa, Hawaii 96712
Next to the Post Office
808-637-6729 • 808-637-1922 fax



DR. PORTER TURNBULL
Chiropractic Orthopedist
(808) 638-8740
Appointments available Mon.-Sat. (evenings by appointment)

- Industrial accidents & auto injuries
- Sports injuries • Spinal care
- Safe, Effective, and Gentle

N-C PLUMBING & SUPPLY

Cont. Lic. No. C-8913



- RESIDENTIAL & COMMERCIAL SALES & SERVICE
- CONTRACTING & DESIGN • HOME PLUMBING SERVICE
- PLUMBING FIXTURES, HEATERS • FREE ESTIMATES

Nestor P. Calilao (Owner)
P.O. Box 769
Waialua, HI 96791

Bus: 637-8662
Res: 638-5157
Cellular: 372-8718

email: nncplumbing@hawaii.rr.com



JAY OKU

Senior Mortgage Banker
NMLS # 218211

tel: 808.393.0707 fax: 888.961.8718
email joku@envoymortgage.com
www.jayoku.com



Restaurant & Margarita Bar

- DAILY SPECIALS -

Island Fresh Fish Tacos
Premium Margaritas

Large Parties Welcome Open Daily 9:30am - 9:30pm
637-3059 • North Shore Marketplace • Haleiwa
www.CHOLOSMEXICAN.com



COWPER CONSTRUCTION

LIC. #AG 18275

GENERAL ENGINEERING CONTRACTOR

Full Service Sitework Contractor
Septic Systems & Tanks
25 yr. exp.

Michael Cowper 638-7200
cowperhawaii.com

Farmer & The Baker LLC (Formerly Mokuleia Landscape & Nursery)



Trees, Palms & Shrubs

Contact Us: 808-341-1992

Multi Trade Handyman Service

Remodeling
Carpentry
Tile
Painting
Windows, Doors



Drywall
A/C, Ceiling fans
Cable, Phone lines
Screens
Door knobs & Locks

* Everything for the home or office *
Hm. (808) 638-7849 Cell (808) 551-4783
Robert Snelling Oahuhandyman@aol.com

Munden Design & Build

Lic.#BC19632

Design • Plans • Permits • Construction
Additions & New Residences

808 391-8616

Providing quality work since 1978

J.B. TILE & CARPET

JOHN BURTCH

Free estimates
25 years experience
(808) 226-1023

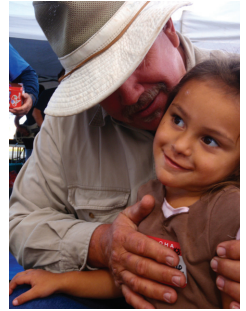


Our next service at Hale'iwa Beach Park

Sunday, March 31 Special Easter Service



Trish Coder Photos



Lunch for everyone at 12 noon!



SURFERS, SAINTS & SINNERS ARE WELCOME!

OAMC is a community outreach made possible by many generous supporters and volunteers. If you would like to support or volunteer for the OAMC call 690-0377.

The OAMC is scheduled to meet on the last Sunday of every month (except May & December).

"There will always be poor people in the land. Therefore I command you to be open handed toward your brother and toward the poor and needy in your land." (Deuteronomy 15:11)

A 501c3 non-profit community organization

MAHALO!

From the
North Shore Food Bank
donations of non-perishable
canned
goods are accepted at the
North Shore News Office
637-3138



Oceanside Chapel Service at Turtle Bay Resort



Every Sunday at 9 a.m. in the beautiful oceanside wedding pavilion.

- Non-denominational 45 min. service
- Traditional & Contemporary music
 - 15 minute sermon
- All are welcome! Free validated parking

Special Easter Service

with
Pastor Bob Major
& Alexia Valenciana
808-681-8889

*When church is pau,
enjoy dining at the Palm Terrace,
Hang Ten Pool Bar, or Lei Leis.



Coffee!
You can sleep when you're dead!

Coffee Gallery
NORTH SHORE
SATISFACTION GUARANTEED
100%

6:30AM - 8:00PM
NORTH SHORE MARKETPLACE
WWW.ROASTMASTER.COM



The North Shore News is published every other Wednesday and mailed free of charge to all North Shore homes and businesses. Extra copies may be obtained at our office.

PRESS RELEASE POLICY: Submit press releases in person or by fax, mail or email to Editor, North Shore News, P.O. Box 1117, Haleiwa, HI 96712. Please type your releases and keep them shorter than 200 words unless they are of an unusual news interest. Releases should be viable news stories and are published on a **space available basis only**, with priority given to those received in our office first. You may attach photos. We are not responsible for the return of any photos. All materials are submitted at owner's risk. We reserve the right to edit and/or refuse all submissions including advertising.

EDITORIAL POLICY: We welcome articles and letters from our readers. Letters to the Editor are published on a space available basis only and preference is given to shortness of length, and quality of content. We prefer to run not more than one letter, per person, per 6 month period. Letters subject to edit.

Views expressed by our contributing writers and advertisers do not necessarily reflect the view of the management and staff of the North Shore News. All rights reserved. Reproduction in whole or part without permission is prohibited. © 2013.

Editor & Classifieds

Linda Seyler

Typography

Downtown General Store

Contributing Writers

Betty Depolito

Naty Hopewell

Choon James

Kalewa

Richard Sterman

City Councilman Ernie Martin

State Representative Lauren Cheape

State Representative Richard Lee Fale



Please recycle this newspaper.

CLASSIFIEDS

SERVICES

SHORE ELECTRICAL SERVICE

New Const-Remodels
638-0049 / Lic#C20777

Dog/Cat Nail Trimming

at your home only \$15.00
Call Julie 637-5395

Lawn Care For You

Mowing, Trimming, Light Hedging
Call Thomas 637-5839

EXPERT ELECTRICIAN

Fans, emergency services, etc.
Jim Richards 371-9369

PARADISE PLUMBING INC.

New Const • Repairs • Remodels
808-368-1473 / Lic. 29856

Handyman Services

Remodeling, Carpentry, Floors,
Concrete, all parts of Construction
Call Bob "The nicest guy in the
business" Ph. 282-2812

Greekz Plumbing LLC

Complete Service & Repair
Camera inspection/drain cleaning
"Got a leak? Call Steve the Greek"
808-372-1820

Haugan Construction LLC

Build & Repair • Big & Small
Let's Talk
Steve 542-9269

DILLON CUSTOM SIGNS

Storefronts & vehicles
Haleiwa 499-9582 20+yrs exp

North Shore Plumbing

Septic and Cesspool Service
Clifford 638-0900 • 291-5099

PIANO LESSONS

Guitar, Ukulele, Bass,
Songwriting
637-4635

Paumalu Electric Inc.

Now installing Solar PV Systems
Permit, panels, roof installation,
electrical tie in. Free estimates.
Dave Hancock 638-9054
Lic. C18074

HARVEY'S REPAIR, LLC

24 hrs Towing Service
Specializing in opening
locked car doors
Call any time 478-0333

GERMAN CAR SERVICE

Professional-Qualified
Technician
Call Gary
637-6800

SHIATSU • LOMI

Aromatherapy
Milica Barjaktarovic
Lic # MAT8348
351-0848
HumanRemodeling.com

BOW WOW BUNGALOWS

Licensed Boarding Kennel
North Shore, Oahu
Reasonable Rates
Ph. 637-2562
These Dogs Have Fun!

North Shore Auto Detailing

Standard - \$25
Deluxe - \$50
Custom - \$70
Call Bill Jack 371-0854
Mobile Service we come to you

Body by Tracey

Cardio, Strength &
Conditioning at
Sunset Elem. Pavillion
Mon/Wed/Fri @ 8:30am
Tues/Thurs @ 6pm
Contact (808)799-7214
or Traceybjj@gmail.com

BIKRAM YOGA

See our new studio, anti-
microbial, anti-bacterial
carpet and more!
Please call for class schedule
637-5700

Offshore Plumbing, Inc.

Commercial * Residential
Septic * Solar * Design
Mike 630-1407
Steve 371-3451
Lic. #28113
steve@offshoreplumbinginc.com

BOBBY'S BODIES

Tuesday evenings at 5:00 p.m.
• Body Toning
Friday mornings at 9:00 a.m.
• Cardio Pump/Fat Burner
For more info: call Bobby, owner of
BOBBY'S BODIES at 637-4150

Aloha Computer

PC Repair/Virus Removal
Fax/Copy/Internet Access
372-2667 or 237-4558

REAL ESTATE NEEDS?

Call me . . . Dee,
Your NS Realtor
Dee-Ann KML
Kekahuna, RA
808-780-3249

Shoreline Builders, Inc.

Design • Build
Remodels • New Construction
Decorative Concrete
Residential and Commercial
808-203-4510
Free Consultation
General Contractor
Lic #BC 20948

HOW TO CONTACT THE NORTH SHORE NEWS

Letters to the Editor, and other items submitted for publication consideration may be sent to us via:

MAIL: P.O. Box 1117, Haleiwa, HI 96712

E-MAIL: NShoreNews@aol.com

FAX: (808) 637-8862

PHONE: (808) 637-3138

CLASSIFIED ADS

Individual Tax Preparation
with emphasis on small
businesses and rentals
40+ years experience
Jeannine Poling EA
638-5130

Pothole Hotline
768-7777

Your Clean Home
Vacation/Residential
Home Cleaning
Affordable • Reliable
• Green Cleaning
For Free Estimate
Call 638-0262 or 782-9941

ANGELS PLUMBING
Repairs
Remodeling
Renovation
638-7878
Lic. #C12004



THE LAWN RANGER
Lawn Maintenance
no yard too hard
no lawn too far gone
We mow betta
258-6439 Dan Fatchett



Business Services Center
Fast & convenient fax, copy,
scan, computer/internet,
laminates, etc.
Across from Haleiwa post office.
637-4558 or GoNorthShore.org



Marianne Abrigo, Properties
Specializing in -
North Shore
Real Estate
Ask for our list of avail-
able properties and/or a
free market analysis.
Marianne M. Abrigo
"Realtor since 1974"
Office 637-3511
Fax 637-0777
Email mabrigo222@aol.com

GUTTER KING, LTD.
Rain Gutter Systems
Seamless Aluminum & Copper
Half round & Custom sizes
"senior, military discounts"
638-7246

**Golden Rule
Lawn Care**
Mowing, weed whacking,
hedge trimming, rake up,
light weeding & haul away.
Call Matt 269-5020

J&L Services Haleiwa
Quality Landscape and
Garden Maintenance. Also
Pressure Washing, Hedges
and Plant Installation.
Call 673-1384 for est.

**TRADITIONAL HAWAIIAN
LOMILOMI MASSAGE**
• 20+ Years Experience
• North Shore Studio
808-372-7649
Lolani222@gmail.com
Lolani Friedman

**Island Heal @ Ka'ala
Healing Arts Center**
Introductory Massage Special
\$55.00 hr. for the month of March
www.islandheal.com
(808) 351-4566

HELP WANTED
BUSSERS/SERVERS
Pizza Bob's in Haleiwa is looking
for BUSSERS/SERVERS. Experi-
ence preferred. Apply in person
at 66-145 Kam. Hwy.

COOKS/KITCHEN HELP
Pizza Bob's in Haleiwa is looking
for kitchen personnel. Experi-
ence preferred, but will consider
training the right people. Apply
in person at 66-145 Kam. Hwy.

Part Time Secretary
Must have computer skills
and high speed internet
access.
Fax resume to 638-7643

**Retail Sales
Surf & Sea**
Hawaii's Ocean Sports Headquarters
is always looking for hard working,
energetic people to become a part
of our sales team. Good pay, bonus,
benefits. Ocean sports experience
and/or bilingual a plus. Apply in
person daily 9am-7pm
62-595 Kam. Hwy., Haleiwa

MISCELLANEOUS

On Feb. 16, someone tore part
of our fence down and stole our
shed on Kawoa Pl., Pupukea. It is
approx. 10'x14' yellow with white
trim. We are offering a reward
for any information leading to
the arrest and conviction of the
thieves. Please contact us at 808-
721-6544. Any information will
remain confidential.

Nani Earrings
Creativity & Recycling
Handmade in Hawaii
www.naniearrings.com
www.naniearrings.etsy.com

Keep it Country
To report **ILLEGAL VACATION
RENTALS**
call 768-8159 or 768-8118
You will remain anonymous
Illegal Vacation Rentals
are ruining the North Shore
www.savenorthshoreneighborhoods.com

BEACH CLEAN UP
Chun's Reef - 10 a.m.
637-2211
Last Saturday of every month
adoptabeachhawaii.org

**Please Report Stranded
Sea Turtles**
Call 983-5730 • Mon.-Fri., 7am-4pm
288-5685 pager wkends, holidays
587-0077 and after hours
Suspected Law Violations
541-2727 or 800-853-1964
NOAA Fisheries DLNR-DOCARE

**IGREJA EVAN.
BRASILEIRA**
Domingos 10:00 am
Quartas 7:30 pm
Sextas-Culto de Oraçao 7:30 pm
Voce e o nosso
convidado especial
Behind Hale'iwa Post Office
637-5566
Pastor Luiz • 638-2212

OFF da ISLAND
Are you leaving Oahu on vacation or
business? Do you live on a neighbor
island, the mainland or foreign
country and subscribe to the North
Shore News? Try send us a photo of
someone in front of a sign or land-
mark holding a copy of the NSN.
Email your photo along with the
person or persons' name, community
of residence, telephone number and
photo location to: NShoreNews@
aol.com. Or, mail to OFF da ISLAND
Photo, North Shore News, P.O. Box
1117, Hale'iwa, HI 96712. We can-
not return photos so please send us
a copy. Photos received become the
property of NSN. Preference and pri-
ority will be given to emailed photos.

Classified Ad Rates
3 lines (min.) \$18.89
4 lines \$25.13
5 lines \$32.45
1" Box Ad \$41.88
(29 characters in each line)
Include your contact information.
*Ads can be dropped off in mail slot,
mailed, or emailed. Pay by check pay-
able to: North Shore News or credit
card by phone order.
We reserve the right to refuse any
advertisement with a full refund.
North Shore News • P.O. Box 1117
Haleiwa, HI 96712 • (808) 637-3138
NShoreNews@aol.com

**Voice of God
Ministries**
Jesus Loves You
If you need Prayer
Call 808-373-0294

**Ho'ola Like Waikiki
Health**
Center's North Shore
Clinic Queen Liliuokalani
Church 8:30am - 3:30pm,
Tuesday and Thursday

**Don't throw away
that old BIKE!**
Donate it to
Yikes Bikes
A non-profit program at Waijulia
High & Intermediate School
637-8200
M-F • 8 a.m.-3 p.m.

Next Issue - April 3, 2013
Deadline Date-Mar. 21, 2013

**For Advertising
Rates**
Call 637-3138

HAPPY EASTER! MALAMA Market

MALAMA MARKET HALEIWA:
OPEN DAILY 7 AM-9 PM
808.637.4520

MALAMA MARKET MAKAKILO:
OPEN DAILY 6 AM-10 PM
808.672.9955

Valid Dates:
3/20/13-3/26/13

Fuji Apple **\$1.19** PER LB.



Pork Loin Chops **\$2.99** PER LB.
Assorted, Bone-In



Extra Jumbo Shrimp **\$6.99** PER LB.
16/20 ct.,
Previously Frozen



7Up, Sunkist, A&W, or Sun Drop **2/\$3.50**
Selected Varieties,
2 Ltr.



Ragù Spaghetti Sauce **2/\$4.50**
Selected Varieties,
16-24 oz.



Dreyer's Ice Cream **2/\$7.50**
Selected Varieties,
48 oz.



Totino's Party Pizza **8/\$10**
Selected Varieties,
9.8-10.9 oz.



Cottonelle Bath Tissue **\$4.99**
Selected Varieties,
6 Double Rolls



Scott Paper Towel **\$7.99**
Selected Varieties, 6 Mega Rolls

Purex Powder Laundry Detergent **\$3.99**
Selected Varieties,
71 oz.



Yoplait Yogurt Cup **10/\$6**
Selected Varieties,
4-6 oz.



Garlic Loaf Pull-Apart **\$2.79** EACH
16 oz.



Huli Huli* Chicken Whole Roaster **\$6.99** EACH
*Used with Permission

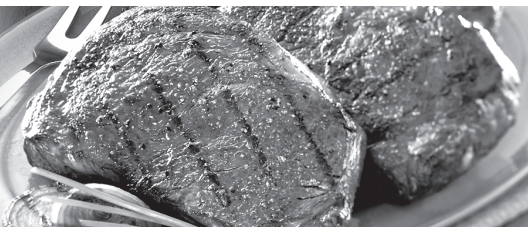


Bud, Bud Light, Miller, or Coors **\$22.99**
30 Pk. Cans



THURSDAY

INCLUDES:
7-8 oz. Steak
Rice • Tossed Salad • Drink



Grilled Steak
LUNCH
\$6.99

Hawaii Beverage Fee of 1¢ per can or bottle will be added to purchase price at checkout. An Additional Hawaii Deposit fee of 5¢ will be charged for all specially marked beverage containers.

Limit five units (mix/match) per purchase, unless otherwise specified. We reserve the right to limit quantities. No sales to dealers. Prices plus applicable state tax. Hawaii EBT cards welcomed.